

**Deal Name:** Driver Japan six

**Originator:** Volkswagen Financial Services Japan Ltd.  
Gotenyama Trust Tower 17F  
7-35 Kitashinagawa 4-chome, Shinagawa-ku  
Tokyo 140-0001, Japan

**Reporting Entity:** Volkswagen Financial Services Japan Ltd.  
Treasury Dept.  
Gotenyama Trust Tower 17F  
7-35 Kitashinagawa 4-chome, Shinagawa-ku  
Tokyo 140-0001, Japan  
Tel No.: +81(0)3-5792-7261  
Fax No.: +81(0)3-3280-7365  
E-mail: vwfsjp.abs@vwfs.com

**Trustor of the First Trust:  
Servicer:** Volkswagen Financial Services Japan Ltd.

**Trustee of the First Trust:  
Trustee of the Second Trust:** Deutsche Trust Company Limited Japan  
Sanno Park Tower, 11-1,  
Nagatacho 2-chome, Chiyoda-ku,  
Tokyo, 100-6172, Japan  
Trust Business Administration Department  
Tel No.: +81(0)3-5156-5637  
Fax No.: +81(0)3-5156-5658  
E-mail: DB\_Trust\_Trust@list.db.com



## Contents

Page	Tables of Contents
1	<a href="#">Front Page</a>
2	<a href="#">Contents</a>
3	<a href="#">Deal Overview</a>
4	<a href="#">Deal Overview: Counterparties I</a>
5	<a href="#">Deal Overview: Counterparties II</a>
6	<a href="#">Information regarding the TBI and ABL to the Second Trust</a>
7	<a href="#">Pool Information</a>
8	<a href="#">Available Distribution</a>
9	<a href="#">Waterfall</a>
10	<a href="#">Credit Enhancement</a>
11	<a href="#">Cumulative Gross Loss Ratio &amp; Performance Trigger</a>
12	<a href="#">Cumulative Gross Loss Ratio &amp; Performance Trigger (Chart)</a>
13	<a href="#">Default &amp; Delinquencies</a>
14	<a href="#">Run Out Schedule (Previous)</a>
15	<a href="#">Run Out Schedule</a>
16	<a href="#">Expected Amortization to the Second Trust</a>
17	<a href="#">Sub-Servicer</a>
18	<a href="#">Brand</a>
19	<a href="#">New and Used</a>
20	<a href="#">Product Type</a>
21	<a href="#">RV</a>
22	<a href="#">Brand New and Used</a>
23	<a href="#">Customer Type</a>
24	<a href="#">Outstanding Discounted Principal Balance</a>
25	<a href="#">Original Principal Amount</a>
26	<a href="#">Interest Rate paid by the Obligor</a>
27	<a href="#">Original Term</a>
28	<a href="#">Remaining Term</a>
29	<a href="#">Seasoning</a>
30	<a href="#">Type of Car</a>
31	<a href="#">Brand and Model</a>
32	<a href="#">Geographic Dist. by Prefecture</a>
33	<a href="#">Obligor Concentration</a>
34	<a href="#">Contract Start Month</a>
35	<a href="#">Contract End Month</a>
36	<a href="#">Monthly payment</a>
37	<a href="#">Bonus payment</a>
38	<a href="#">Mortor Type</a>

### Deal Overview

<b>Cut Off Date:</b>	2017/02/10		
<b>Trust Commencement Date:</b>	2017/02/23	<b>Legal Maturity of the First Trust:</b>	2025/06/27
<b>Monthly Period:</b>	2019/09/11	to	2019/10/10
<b>Reporting Date:</b>	2019/10/18		
<b>Reporting Frequency:</b>	monthly		
<b>Period No.:</b>	32		
<b>Remittance Date:</b>	2019/10/21		
<b>Advance Payment Date:</b>	2019/10/21		
<b>Cash Adjustment Date:</b>	2019/10/21		
<b>Additional Entrustment Date:</b>	2019/10/24		
<b>Trust Calculation Date:</b>	2019/10/24		
<b>Trust Calculation Period:</b>	2019/09/27	to	2019/10/24
<b>First Trust Payment Date:</b>	2019/10/25		
<b>Second Trust Payment Date:</b>	2019/10/28		
<b>Interest Calculation Period:</b>	2019/10/01	to	2019/10/28
<b>Next Reporting Date:</b>	2019/11/15		

### Pool information at the Initial Cut off Date

	Number of Contracts	Outstanding Discounted Principal Balance	Outstanding Nominal Balance
Outstanding Pool	30,757	64,171,706,472 JPY	67,028,993,300 JPY

Credit Type	Percentage of Loans	Outstanding Discounted Principal Balance	Percentage of Balance
Balloon	76.13 %	55,443,642,000 JPY	86.40 %
Equal Instalment Loan	23.87 %	8,728,064,472 JPY	13.60 %
<b>Total</b>	<b>100.00 %</b>	<b>64,171,706,472 JPY</b>	<b>100.00 %</b>

Type of Car	Percentage of Loans	Outstanding Discounted Principal Balance	Percentage of Balance
New	66.66 %	49,506,381,305 JPY	77.15 %
Used	33.34 %	14,665,325,167 JPY	22.85 %
<b>Total</b>	<b>100.00 %</b>	<b>64,171,706,472 JPY</b>	<b>100.00 %</b>

## Deal Overview: Counterparties I

### Joint Lead Managers:

**Shinsei Securities Co., Ltd.**  
 Nihonbashi Muromachi Nomura Building, 4-3,  
 Nihonbashi-muromachi 2-chome,  
 Chuo-ku,  
 Tokyo 103-0022, Japan

**BNP Paribas Securities (Japan) Limited**  
 GranTokyo North Tower, 9-1,  
 Marunouchi 1-chome,  
 Chiyoda-ku,  
 Tokyo 100-6740, Japan

### Trust Management Account Bank:

**MUFG Bank, Ltd.**  
 4-2 Toranomom 1-chome,  
 Minato-ku  
 Tokyo 105-0001, Japan

Rating								
Moody's			Fitch			R&I		
Long Term	Short Term	Outlook	Long Term	Short Term	Outlook	Long Term	Short Term	Outlook
n.a.	n.a.	n.a.	n.a.	n.a.	n.a.	n.a.	n.a.	n.a.
n.a.	n.a.	n.a.	n.a.	n.a.	n.a.	n.a.	n.a.	n.a.
A1	P-1	Stable	A	F1	Stable	AA-	a-1+	Stable

### Originator:

### Trustor of the First Trust:

### Servicer:

**Volkswagen Financial Services Japan Ltd.**  
 Gotenyama Trust Tower 17F  
 7-35 Kitashinagawa 4-chome, Shinagawa-ku  
 Tokyo 140-0001, Japan

### Trustee of the First Trust:

### Trustee of the Second Trust:

**Deutsche Trust Company Limited Japan**  
 Attn.: Driver Japan Six  
 Trust Business Administration Department

### ABL Lender to the First Trust:

### Trustor of the Second Trust:

Shinsei Securities Co., Ltd.

### Seller of the Trust Beneficial

### Interest of the Second Trust

Shinsei Securities Co., Ltd.  
 BNP Paribas Securities (Japan) Limited

**Deal Overview: Counterparties II**

**Rating Agencies:**

**Moody's SF Japan K.K.**

Attn.: Driver Japan six  
 Structure Finance Group Monitoring Division  
 5-1 Atago 2-chome, Minato-ku  
 Tokyo 105-6220, Japan  
 E-mail: monitor.msfi@moodys.com

**Fitch Ratings Japan Limited**

Attn.: Driver Japan six  
 Structured Finance  
 Kojimachi Crystal City East Wing 3rd Floor,  
 4-8 Kōjimachi, Chiyoda-ku,  
 Tokyo 102-0083, Japan  
 E-mail: tokyo.surveillance@fitchratings.com

**Rating and Investment Information, Inc.**

Attn.: Monitoring Group Department:  
 Structured Finance Department  
 TERRACE SQUARE, 3-22,  
 Kanda Nishikicho, Chiyoda-ku,  
 Tokyo 101-0054, Japan  
 E-mail: sfmonitor@r-i.co.jp

**Rating of VW**

**Volkswagen Financial Services AG**

**Volkswagen AG**

Rating								
Moody's			Fitch			R&I		
Short Term	Long Term	Outlook	Short Term	Long Term	Outlook	Short Term	Long Term	Outlook
P-2	A3	Stable	n.a.	n.a.	n.a.	n.a.	n.a.	n.a.
P-2	A3	Stable	F1	BBB+	Stable	n.a.	n.a.	n.a.

**Information regarding Trust Beneficial Interest of the Second Trust & Asset Backed Loan to the Second Trust**
**Rating Details**
**Rating at Issue Date**

	<u>TBI</u>	<u>ABL</u>
Moody's	Aaa(sf)	Aaa(sf)
Fitch	AAAsf	AAAsf
R&I	AAA	AAA

**Current Rating**

	<u>TBI</u>	<u>ABL</u>
Moody's	Aaa(sf)	Aaa(sf)
Fitch	AAAsf	AAAsf
R&I	AAA	AAA

**Information on TBI & ABL**

	<u>TBI</u>	<u>ABL</u>
Initial Balance	39,200,000,000 JPY	20,800,000,000 JPY
Expected Maturity Date	2021/05/28	2021/05/28
Legal Maturity of the Second Trust	2025/06/30	2025/06/30
Payment Dates	28th	28th
Business Day Convention	Modified Following	Modified Following
Listing	None	—

**Information on Interest**

	<u>TBI</u>	<u>ABL</u>
Fixed/ Floating	Fixed	Fixed
Current Coupon	0.19%	0.19%
Day Count Convention	30/360	30/360

**Selling Restriction**

The holders of the Beneficial Interest and the ABL Lenders\* are prohibited from dividing, assigning, pledging or creating any other security interest over any of the Beneficial Interest and the Asset Backed Loans without the prior written approval of the Trustee of the Second Trust.

(\*)The holders of the Beneficial Interest and the ABL Lenders are limited to specified investors (*tokutei toushika*) as defined under Paragraph 31 of Article 2 of the Financial Instruments and Exchange Act (Law no.25 of 1948 as amended).

**Clean-Up Call**

VWFS Japan as the Trustor of the First Trust has a right at its option to exercise a clean-up call to repurchase of all, but not part, of the outstanding Auto Loan Receivables from the Trustee of the First Trust on any Trust Calculation Date, the Discounted Principal Balance of all outstanding Auto Loan Receivables is expected to be less than ten percent (10%) of the Discounted Principal Balance of the Initial Auto Loan Receivables as of the Initial Cut-off Date after the distribution pursuant to Article 18.1 of the First Trust Agreement on the immediately following First Trust Payment Date.

**Pool Information**
**Pool Balance on Initial Cut-Off Date**

Status	Number of Contracts	Outstanding Discounted Principal Balance
Normal	30,757	64,171,706,472 JPY
Cancellation	0	0 JPY
Early Termination	0	0 JPY
Defaulted Receivables	0	0 JPY
Matured	0	0 JPY
Refinance Option	0	0 JPY
Repurchase	0	0 JPY
<b>Total</b>	<b>30,757</b>	<b>64,171,706,472 JPY</b>

**Pool Balance before entrustment of Additional Auto Loan Receivables**

Status	Number of Contracts on previous EoP	Outstanding Discounted Principal Balance on previous EoP	Number of Contracts "as Collections" during the relevant Monthly Period*	Outstanding Discounted Principal Balance "as Collections" during the relevant Monthly Period*	Number of Contracts EoP before entrustment of Additional Auto Loan Receivables	Outstanding Discounted Principal Balance EoP before entrustment of Additional Auto Loan Receivables
Normal	16,886	23,235,872,670 JPY	15,868	496,638,260 JPY	15,868	21,452,943,409 JPY
Cancellation	0	0 JPY	0	0 JPY	0	0 JPY
Early Termination	0	0 JPY	304	486,468,117 JPY	0	0 JPY
Defaulted Receivables	0	0 JPY	6	11,720,223 JPY	0	0 JPY
Matured	0	0 JPY	545	537,157,726 JPY	0	0 JPY
Refinance Option	0	0 JPY	163	250,944,935 JPY	0	0 JPY
Repurchase	0	0 JPY	0	0 JPY	0	0 JPY
<b>Total</b>	<b>16,886</b>	<b>23,235,872,670 JPY</b>	<b>16,886</b>	<b>1,782,929,261 JPY</b>	<b>15,868</b>	<b>21,452,943,409 JPY</b>

**Pool Balance after entrustment of Additional Auto Loan Receivables**

Status	Number of Contracts EoP before entrustment of Additional Auto Loan Receivables	Outstanding Discounted Principal Balance EoP before entrustment of Additional Auto Loan Receivables	Number of Contracts of Additional Auto Loan Receivables	Outstanding Discounted Principal Balance of Additional Auto Loan Receivables	Number of Contracts EoP after entrustment of Additional Auto Loan Receivables	Outstanding Discounted Principal Balance EoP after entrustment of Additional Auto Loan Receivables
Normal	15,868	21,452,943,409 JPY	0	0 JPY	15,868	21,452,943,409 JPY
Cancellation	0	0 JPY	0	0 JPY	0	0 JPY
Early Termination	0	0 JPY	0	0 JPY	0	0 JPY
Defaulted Receivables	0	0 JPY	0	0 JPY	0	0 JPY
Matured	0	0 JPY	0	0 JPY	0	0 JPY
Refinance Option	0	0 JPY	0	0 JPY	0	0 JPY
Repurchase	0	0 JPY	0	0 JPY	0	0 JPY
<b>Total</b>	<b>15,868</b>	<b>21,452,943,409 JPY</b>	<b>0</b>	<b>0 JPY</b>	<b>15,868</b>	<b>21,452,943,409 JPY</b>

**Limits on Eligibility Criteria**

Status Limits on Eligibility Criteria (v) (including Additional Entrustment)	Current Exposure in %	Limits in % of the aggregate Discounted Principal Balance of the Auto Loan Receivables outstanding	Status
(i) on Used Purchased Vehicle	24.82 %	35 %	-*
(ii) on Non-VW Vehicles	0.01 %	5 %	-*
(iii) on Balloon Payment	51.11 %	50 %	-*

(\* ) not applicable since the Revolving Period ended

### Outstanding Balances

Monthly Period: from 2019/09/11 to 2019/10/10  
 Reporting Date: 2019/10/18  
 Trust Calculation Date: 2019/10/24

#### Outstanding Balances

	Number of Contracts	Aggregate Amount of the Discounted Principal Balance	Aggregate Amount of the Nominal Balance
Balance on the previous EoP	16,886	23,235,872,670 JPY	23,864,450,800 JPY
Balance after counting on the Collections during the relevant Monthly Period	15,868	21,452,943,409 JPY	22,029,854,300 JPY
Balance of Additional Auto Loan Receivables	0	0 JPY	0 JPY
<b>Aggregate Amount of Auto Loan Receivables</b>	<b>15,868</b>	<b>21,452,943,409 JPY</b>	<b>22,029,854,300 JPY</b>

#### Collections

	Number of Contracts	Aggregate Amount of the Discounted Principal Balance	Aggregate Amount of the Nominal Balance
Collections: Amortization of current contracts	15,868	496,638,260 JPY	536,916,100 JPY
Collections: Cancellation	0	0 JPY	0 JPY
Collections: Early Termination	304	486,468,117 JPY	487,145,941 JPY
Collections: Defaulted Receivables	6	11,720,223 JPY	11,744,378 JPY
Collections: Matured	545	537,157,726 JPY	537,915,900 JPY
Collections: Refinance Option	163	250,944,935 JPY	251,280,000 JPY
Collections: Repurchase	0	0 JPY	0 JPY
<b>Sum</b>	<b>16,886</b>	<b>1,782,929,261 JPY</b>	<b>1,825,002,319 JPY</b>

#### Available Distribution Amount

	Number of Contracts	Aggregate Amount of the Nominal Balance
(a) the Collections for the Monthly Period with respect to such Trust Calculation Date	16,886	1,825,002,319 JPY
(b) drawings from the Cash Collateral Ledger in accordance with Article 18.3 of the First Trust Agreement	0	0 JPY
(c) net investment earnings from Eligible Investments	0	0 JPY
(d) net proceeds from the sale or disposal of the Trust Assets of the First Trust	0	0 JPY
(e) any amount which is carried over from the immediately preceding Trust Calculation Date	0	0 JPY
<b>Sum</b>	<b>16,886</b>	<b>1,825,002,319 JPY</b>



## Waterfall

There is no distinction between principal and interest, and all collections go through a single priority of payments			
		Payment	Remaining Amount
Available Distribution Amount	plus	1,825,002,319 JPY	1,825,002,319 JPY
(a) an amount necessary for the payment of all taxes and public charges to be paid to the relevant public authority by the immediately following First Trust Payment Date.	less	0 JPY	1,825,002,319 JPY
(b) an amount necessary for the payment of all Fees for the Trustee of the First Trust to be paid to the Trustee of the First Trust by the immediately following First Trust Payment Date.	less	212,441 JPY	1,824,789,878 JPY
(c) an amount necessary for the payment of the Servicing Fee to be paid to the Servicer by the immediately following First Trust Payment Date.	less	21,041,372 JPY	1,803,748,506 JPY
(d) an amount necessary for the payment of the Trust Expenses of the First Trust as provided in Article 23.1 (including the Rating Fees, Costs of the Second Trust and those fees not otherwise covered by (b) or (c) above) to be paid to the relevant party by the immediately following First Trust Payment Date (including any amounts advanced by the Trustee of the First Trust pursuant to Article 23.3)	less	228,005 JPY	1,803,520,501 JPY
(e) an amount necessary for the payment of overdue and unpaid interest on the Asset Backed Loans to the First Trust (if any) to be paid to the Trustee of the Second Trust by the immediately following First Trust Payment Date.	less	0 JPY	1,803,520,501 JPY
(f) an amount necessary for the payment to the Trustee of the Second Trust of interest on the Asset Backed Loan to the First Trust accruing during the relevant Interest Calculation Period	less	3,255,926 JPY	1,800,264,575 JPY
(g) an amount necessary to top up the balance thereof until it is equal to the Cash Collateral Ledger Target Balance	less	0 JPY	1,800,264,575 JPY
(h) (i) prior to the expiration of the Revolving Period: an amount necessary for the redemption of any Additional Senior Beneficial Interest;	less	1,577,892,396 JPY	222,372,179 JPY
(ii) following the expiration of the Revolving Period and prior to the occurrence of an Early Amortization Event, an amount necessary for the payment to the Trustee of the Second Trust of the Asset Backed Loan Principal Payment Amount for the relevant First Trust Payment Date.			
(iii) following the occurrence of the Early Amortization Event, an amount necessary for the payment to the Trustee of the Second Trust of the remaining principal balance of the Asset Backed Loan to the First Trust.			
(i) an amount necessary for the payment to the Trustee of the First Trust of any Indemnified Amounts which are not compensated by the Trustor of the First Trust	less	0 JPY	222,372,179 JPY
(j) an amount necessary for the payment to the Subordinated Beneficiary of the Subordinated Beneficial Principal Payment Amount for the relevant First Trust Payment Date.	less	205,036,865 JPY	17,335,314 JPY
(k) (i) prior to the expiration of the Revolving Period, then (x) if a transfer is made under (j) above, such remaining amount will be transferred to the Expenses Distribution Ledger for payment to the Subordinated Beneficiary as a payment of earnings on the Subordinated Beneficial Interest, and such payment shall be made on the First Trust Payment Date immediately following such Trust Calculation Date or (y) if no transfer is made under (j) above, such remaining amount will be carried forward to the next Trust Calculation Date.	less	17,335,314 JPY	0 JPY
(ii) following the expiration of the Revolving Period and prior to the occurrence of an Early Amortization Event, then such remaining amount will be transferred to the Expenses Distribution Ledger for payment to the Subordinated Beneficiary as a payment of earnings on the Subordinated Beneficial Interest, and such payment shall be made on the First Trust Payment Date immediately following such Trust Calculation Date.			
(iii) following the occurrence of an Early Amortization Event, the remaining amount in the Trust Collection Ledger will be carried forward to the next Trust Calculation Date.			

## Credit Enhancement

### Subordinated Principal Balance as of the relevant First Trust Payment Date

	Percentage of Aggregate Discounted Principal Balance	Value
(i) the aggregate amount of the Discounted Principal Balance of all Auto Loan Receivables outstanding		21,452,943,409 JPY
(ii) Asset Backed Loan Principal Balance on the relevant First Trust Payment Date		18,985,854,916 JPY
Overcollateralization ( = (i) - (ii) )	11.50 %	2,467,088,493 JPY
Trust Collection Ledger which is carried over from the immediately preceding Trust Calculation Date	0.00 %	0 JPY
The amount in the Cash Collateral Ledger	1.61 %	345,000,000 JPY
Subordinated Principal Balance	13.11 %	2,812,088,493 JPY

### Trust Management Account (TMA)

	in JPY	+/-	in JPY (previous)
<b>Initial Balance on Cash Entrustment Date</b>	<b>345,000,000 JPY</b>		
<b>Outstanding Balance on First Trust Payment Date</b>	<b>345,000,000 JPY</b>	<b>0 JPY</b>	<b>345,000,000 JPY</b>
(a) Expenses Distribution Ledger	0 JPY	0 JPY	0 JPY
(b) Trust Collection Ledger	0 JPY	0 JPY	0 JPY
(c) Cash Collateral Ledger	345,000,000 JPY	0 JPY	345,000,000 JPY
<b>Cash Collateral Ledger Target Balance</b>	<b>345,000,000 JPY</b>		

### Calculation of Credit Enhancement

Driver Japan six's Credit Enhancement consists of the items listed above in the Subordinated Principal Balance as of the relevant date of determination (immediately following the First Trust Payment Date). The result provides an absolute value, which will be applied to the (amortized) Aggregate Discounted Principal Balance as of the end of the relevant date.

The transaction has a Revolving Period of 12 months until February 2018.

Asset Backed Loan Overcollateralization Percentage is (i) prior to the expiration of the Revolving Period, 8.5%, and (ii) following the expiration of the Revolving Period, 11.5%; provided, in each case no Credit Enhancement Increase Condition shall be in effect. After a Level 1 Credit Enhancement Increase Condition in effect, 17% and after a Level 2 Credit Enhancement Increase Condition is in effect, 100%.

### Cumulative Gross Loss & Cumulative Repurchased Receivables

#### Cumulative Defaulted Receivables

	Number of Contracts	Write Offs
Beginning of Period	150	299,079,694 JPY
Defaulted Receivables	6	11,720,223 JPY
<b>End of Period</b>	<b>156</b>	<b>310,799,917 JPY</b>

#### Cumulative Gross Loss Ratio

The sum of the Discounted Principal Balance of all Auto Loan Receivables that have become Defaulted Receivables from the Initial Cut-off Date through to the end of Monthly Period immediately preceding the relevant Trust Calculation Date

310,799,917 JPY 0.34 %

The sum of (i) the aggregate Discounted Principal Balance of the Initial Auto Loan Receivables as of the Initial Cut-off Date and (ii) the aggregate Discounted Principal Balance as of the relevant Trust Calculation Date of all Additional Auto Loan Receivables (if any) entrusted on the Additional Entrustment Dates which fall six months prior to the relevant Trust Calculation Date.

90,684,064,608 JPY

#### Performance Triggers

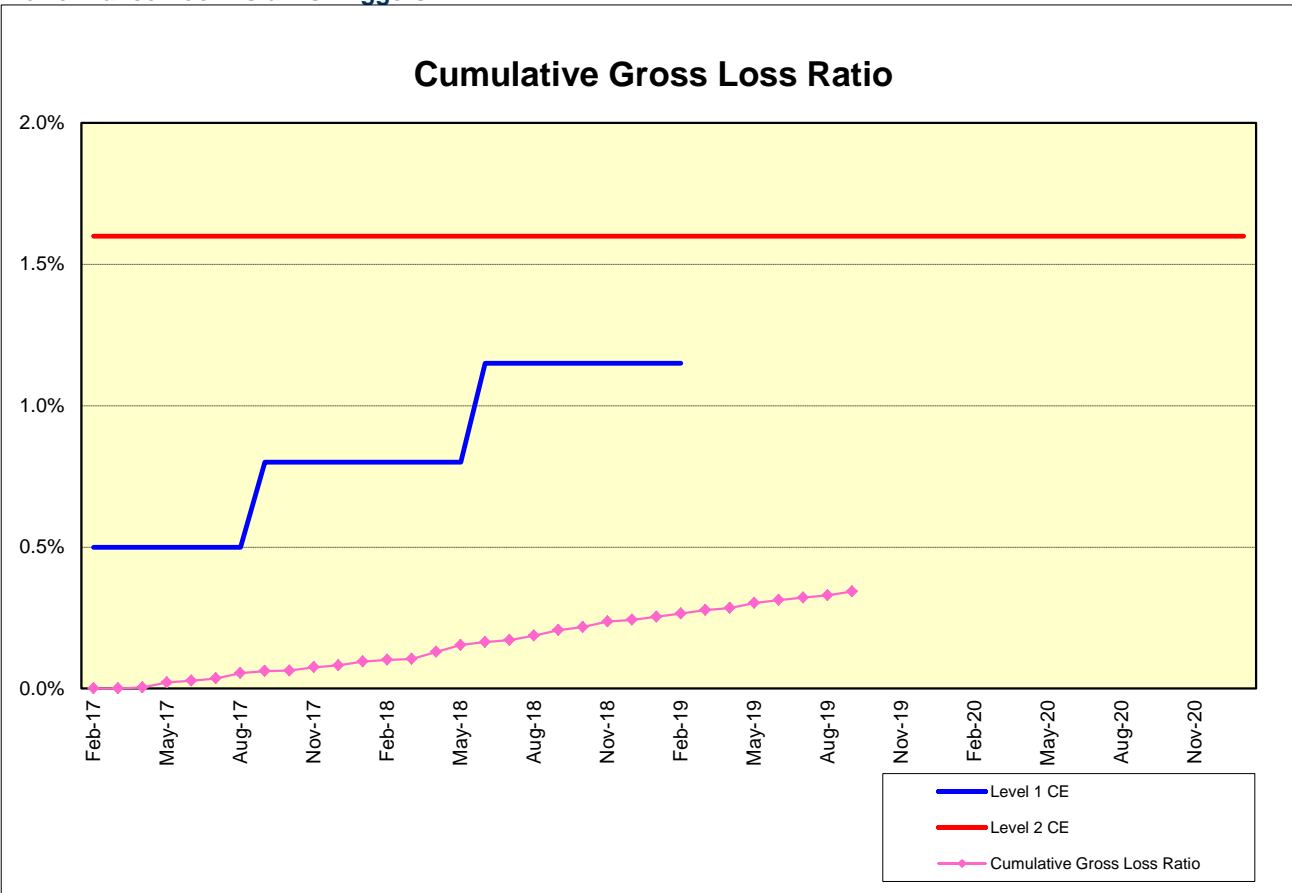
Asset Backed Loan Overcollateralization Percentage was implemented to assure on a monthly basis that no cash is paid to lower steps in the waterfall unless there is sufficient Overcollateralization to support the transaction. The performance trigger in form of a Credit Enhancement Increase Condition will be activated when the Cumulative Gross Loss Ratio exceeds the defined limits. In this case the Overcollateralization will be increased accordingly.

Levels	Credit Enhancement increase condition	Credit Enhancement increase condition in place?
Level 1 (i)	Cumulative Gross Loss Ratio exceeds 0.5% for any First Trust Payment Date on or prior to August 2017	no
Level 1 (ii)	Cumulative Gross Loss Ratio exceeds 0.8% for any First Trust Payment Date from September 2017 to May 2018	no
Level 1 (iii)	Cumulative Gross Loss Ratio exceeds 1.15% for any First Trust Payment Date from June 2018 to February 2019	no
Level 2	Cumulative Gross Loss Ratio exceeds 1.6% for any First Trust Payment Date	no

	Asset Backed Loan Overcollateralization Percentage
Prior to the expiration of the Revolving Period (No Credit Enhancement Increase Condition is in effect)	8.50 %
Following the expiration of Revolving Period (No Credit Enhancement Increase Condition is in effect)	11.50 %
After a Level 1 Credit Enhancement Increase Condition is in effect	17.00 %
After a Level 2 Credit Enhancement Increase Condition is in effect	100.00 %
<b>Current Asset Backed Loan Overcollateralization Percentage</b>	<b>11.50 %</b>

**Cumulative Gross Loss & Cumulative Repurchased Receivables**

**Performance Pool vis-a-vis Triggers**



**Cumulative Repurchased Receivables**

	Number of Contracts	Repurchase Price
Beginning of Period	0	0 JPY
Repurchased Receivables	0	0 JPY
<b>End of Period</b>	<b>0</b>	<b>0 JPY</b>

### Defaulted and Delinquent Contracts

#### Information of Delinquencies and Defaults

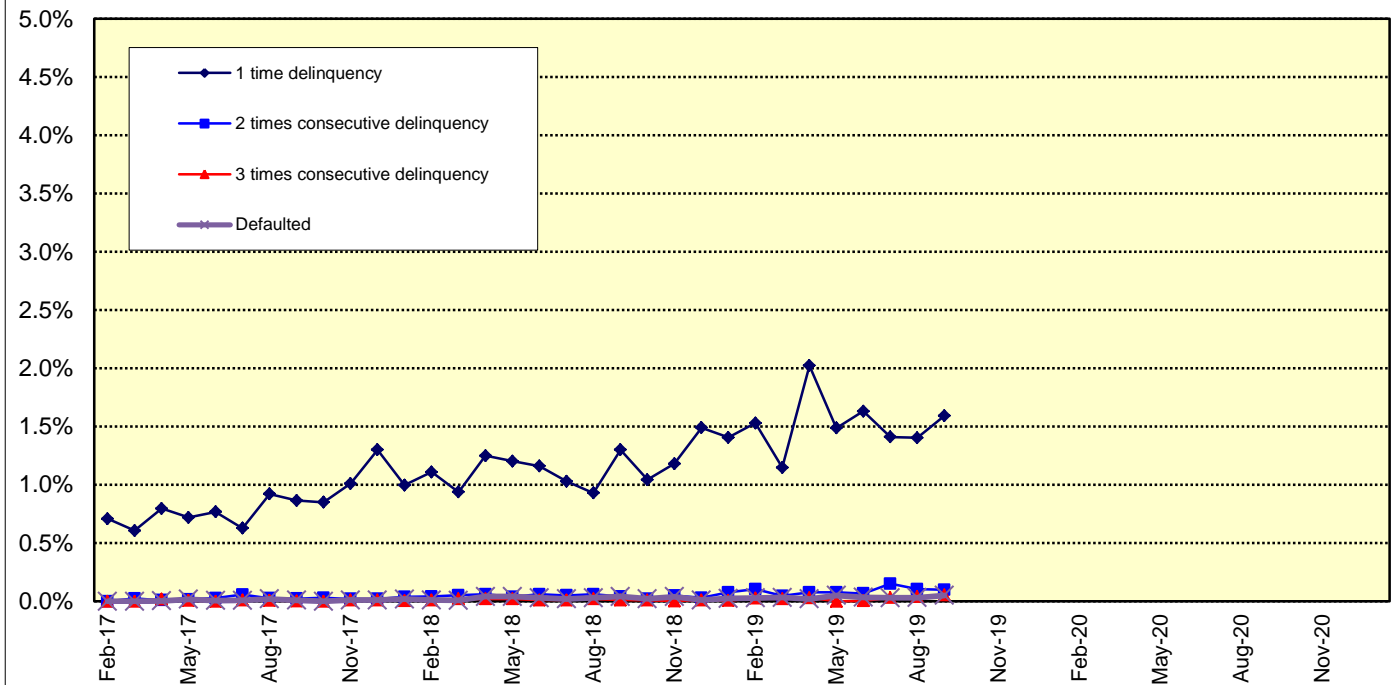
Current Reporting Period	Number of Contracts	Percentage of Contracts (*)	Outstanding Discounted Principal Balance	Percentage of Principal Balance (*)	Outstanding Nominal Balance	Percentage of Nominal Balance (*)
Delinquent	254	1.50 %	374,182,345 JPY	1.61 %	386,417,000 JPY	1.62 %
Default	6	0.04 %	11,720,223 JPY	0.05 %	11,744,378 JPY	0.05 %

(\*) Based on the previous EoP

#### Delinquency Profile (Information Purpose Only)

Days in Arrears	Number of Contracts	Percentage of Contracts	Outstanding Discounted Principal Balance	Percentage of Principal Balance	Outstanding Nominal Balance	Percentage of Nominal Balance
1	236	1.49 %	341,495,319 JPY	1.59 %	352,456,900 JPY	1.60 %
2	11	0.07 %	21,111,824 JPY	0.10 %	21,955,600 JPY	0.10 %
3	7	0.04 %	11,575,202 JPY	0.05 %	12,004,500 JPY	0.05 %
<b>Total</b>	<b>254</b>	<b>1.60 %</b>	<b>374,182,345 JPY</b>	<b>1.74 %</b>	<b>386,417,000 JPY</b>	<b>1.75 %</b>

### Delinquent / Defaulted (Gross Loss) Ratio



Run Out Schedule

ROS on the previous EoP on 2019/09/10

Next Payment Month	Number of Contracts	ABS Outstanding Principal	ABS Outstanding Interest	Outstanding Installment	ABS Remaining Principal	ABS Remaining Interest	ABS Remaining Installment
08.2019	16,886	23,235,872,670 JPY	628,578,130 JPY	23,864,450,800 JPY	0 JPY	0 JPY	0 JPY
09.2019	16,886	21,939,871,584 JPY	586,381,316 JPY	22,526,252,900 JPY	1,296,001,086 JPY	42,196,814 JPY	1,338,197,900 JPY
10.2019	16,178	20,911,640,210 JPY	546,238,090 JPY	21,457,878,300 JPY	1,028,231,374 JPY	40,143,226 JPY	1,068,374,600 JPY
11.2019	15,668	19,586,982,137 JPY	507,779,663 JPY	20,094,761,800 JPY	1,324,658,073 JPY	38,458,427 JPY	1,363,116,500 JPY
12.2019	14,975	18,258,550,527 JPY	471,358,673 JPY	18,729,909,200 JPY	1,328,431,610 JPY	36,420,990 JPY	1,364,852,600 JPY
01.2020	14,575	17,364,114,036 JPY	437,277,064 JPY	17,801,391,100 JPY	894,436,491 JPY	34,081,609 JPY	928,518,100 JPY
02.2020	14,244	16,531,055,185 JPY	404,776,315 JPY	16,935,831,500 JPY	833,058,851 JPY	32,500,749 JPY	865,559,600 JPY
03.2020	13,761	15,512,692,525 JPY	373,730,475 JPY	15,886,423,000 JPY	1,018,362,660 JPY	31,045,840 JPY	1,049,408,500 JPY
04.2020	13,113	14,885,169,761 JPY	344,349,439 JPY	15,229,519,200 JPY	627,522,764 JPY	29,381,036 JPY	656,903,800 JPY
05.2020	12,891	14,215,518,805 JPY	316,095,595 JPY	14,531,614,400 JPY	669,650,956 JPY	28,253,844 JPY	697,904,800 JPY
06.2020	12,565	13,334,256,407 JPY	289,020,293 JPY	13,623,276,700 JPY	881,262,398 JPY	27,075,302 JPY	908,337,700 JPY
07.2020	12,212	12,542,055,859 JPY	263,556,341 JPY	12,805,612,200 JPY	792,200,548 JPY	25,463,952 JPY	817,664,500 JPY
08.2020	11,942	11,874,970,715 JPY	239,614,985 JPY	12,114,585,700 JPY	667,085,144 JPY	23,941,356 JPY	691,026,500 JPY
09.2020	11,608	11,286,673,792 JPY	216,892,208 JPY	11,503,566,000 JPY	588,296,923 JPY	22,722,777 JPY	611,019,700 JPY
10.2020	11,243	10,803,946,426 JPY	195,266,774 JPY	10,999,213,200 JPY	482,727,366 JPY	21,625,434 JPY	504,352,800 JPY
11.2020	11,013	10,337,022,278 JPY	174,595,922 JPY	10,511,618,200 JPY	466,924,148 JPY	20,670,852 JPY	487,595,000 JPY
12.2020	10,760	9,535,507,235 JPY	154,841,265 JPY	9,690,348,500 JPY	801,515,043 JPY	19,754,657 JPY	821,269,700 JPY
01.2021	10,459	8,910,226,067 JPY	136,683,033 JPY	9,046,909,100 JPY	625,281,168 JPY	18,158,232 JPY	643,439,400 JPY
02.2021	10,052	8,241,488,735 JPY	119,702,065 JPY	8,361,190,800 JPY	668,737,332 JPY	16,980,968 JPY	685,718,300 JPY
03.2021	9,436	7,465,740,041 JPY	103,975,759 JPY	7,569,715,800 JPY	775,748,694 JPY	15,726,306 JPY	791,475,000 JPY
04.2021	8,558	6,987,673,449 JPY	89,686,551 JPY	7,077,360,000 JPY	848,066,592 JPY	14,289,208 JPY	492,355,800 JPY
05.2021	8,123	6,440,916,988 JPY	76,345,412 JPY	6,517,262,400 JPY	546,756,461 JPY	13,341,139 JPY	560,097,600 JPY
06.2021	7,512	5,786,981,673 JPY	64,069,027 JPY	5,851,050,700 JPY	653,935,315 JPY	12,276,385 JPY	666,211,700 JPY
07.2021	6,891	5,062,547,659 JPY	53,097,441 JPY	5,115,645,100 JPY	724,434,014 JPY	10,971,586 JPY	735,405,600 JPY
08.2021	6,242	4,411,172,699 JPY	43,517,001 JPY	4,454,689,700 JPY	651,374,960 JPY	9,580,440 JPY	660,955,400 JPY
09.2021	5,497	3,543,409,768 JPY	35,114,832 JPY	3,578,524,600 JPY	867,762,931 JPY	8,402,169 JPY	476,355,100 JPY
10.2021	4,447	2,990,033,773 JPY	28,334,727 JPY	3,018,368,500 JPY	553,375,995 JPY	6,780,105 JPY	560,156,100 JPY
11.2021	3,807	2,293,525,395 JPY	22,576,605 JPY	2,316,102,000 JPY	696,508,378 JPY	5,758,122 JPY	702,266,500 JPY
12.2021	2,940	1,907,535,968 JPY	18,083,832 JPY	1,925,619,800 JPY	385,989,427 JPY	4,492,773 JPY	390,482,200 JPY
01.2022	2,629	1,637,972,725 JPY	14,340,975 JPY	1,652,313,700 JPY	269,563,243 JPY	3,742,857 JPY	273,306,100 JPY
02.2022	2,367	1,358,171,295 JPY	11,128,105 JPY	1,369,299,400 JPY	279,801,430 JPY	3,212,870 JPY	283,014,300 JPY
03.2022	2,047	972,499,811 JPY	8,455,089 JPY	980,954,900 JPY	385,671,484 JPY	2,673,016 JPY	388,344,500 JPY
04.2022	1,518	806,534,728 JPY	6,475,372 JPY	813,010,100 JPY	165,965,083 JPY	1,979,717 JPY	167,944,800 JPY
05.2022	1,300	631,195,656 JPY	4,815,144 JPY	636,010,800 JPY	175,339,072 JPY	1,660,228 JPY	176,999,300 JPY
06.2022	1,043	450,494,567 JPY	3,476,933 JPY	453,971,500 JPY	180,701,089 JPY	1,338,211 JPY	182,039,300 JPY
07.2022	787	325,942,774 JPY	2,485,926 JPY	328,428,700 JPY	124,551,793 JPY	991,007 JPY	125,542,800 JPY
08.2022	631	236,685,614 JPY	1,750,986 JPY	238,436,600 JPY	89,257,160 JPY	734,940 JPY	89,992,100 JPY
09.2022	451	134,239,263 JPY	1,200,437 JPY	135,439,700 JPY	102,446,351 JPY	550,549 JPY	102,996,900 JPY
10.2022	289	70,711,545 JPY	864,055 JPY	71,575,600 JPY	63,527,718 JPY	336,382 JPY	63,864,100 JPY
11.2022	193	42,204,177 JPY	675,423 JPY	42,879,600 JPY	28,507,368 JPY	188,632 JPY	28,696,000 JPY
12.2022	144	32,361,851 JPY	550,449 JPY	32,912,300 JPY	9,842,326 JPY	124,974 JPY	9,967,300 JPY
01.2023	123	26,474,735 JPY	454,065 JPY	26,928,800 JPY	5,887,116 JPY	96,384 JPY	5,983,500 JPY
02.2023	110	22,337,636 JPY	374,564 JPY	22,712,200 JPY	4,137,099 JPY	79,501 JPY	4,216,600 JPY
03.2023	95	18,754,785 JPY	307,015 JPY	19,061,800 JPY	3,582,851 JPY	67,549 JPY	3,650,400 JPY
04.2023	76	15,831,987 JPY	249,913 JPY	16,081,900 JPY	2,922,798 JPY	57,102 JPY	2,979,900 JPY
05.2023	68	13,183,680 JPY	201,520 JPY	13,385,200 JPY	2,648,307 JPY	48,393 JPY	2,696,700 JPY
06.2023	52	10,404,056 JPY	161,044 JPY	10,565,100 JPY	2,779,624 JPY	40,476 JPY	2,820,100 JPY
07.2023	39	7,842,728 JPY	128,572 JPY	7,971,300 JPY	2,561,328 JPY	32,472 JPY	2,593,800 JPY
08.2023	34	6,136,591 JPY	103,909 JPY	6,240,500 JPY	1,706,137 JPY	24,663 JPY	1,730,800 JPY
09.2023	27	5,101,973 JPY	84,527 JPY	5,186,500 JPY	1,034,618 JPY	19,382 JPY	1,054,000 JPY
10.2023	20	4,300,381 JPY	68,319 JPY	4,368,700 JPY	801,592 JPY	16,208 JPY	817,800 JPY
11.2023	11	3,839,479 JPY	54,621 JPY	3,894,100 JPY	460,902 JPY	13,698 JPY	474,600 JPY
12.2023	10	2,815,308 JPY	42,392 JPY	2,857,700 JPY	1,024,171 JPY	12,229 JPY	1,036,400 JPY
01.2024	9	2,287,675 JPY	33,425 JPY	2,321,100 JPY	527,633 JPY	8,967 JPY	536,600 JPY
02.2024	8	1,952,261 JPY	26,139 JPY	1,978,400 JPY	335,414 JPY	7,286 JPY	342,700 JPY
03.2024	7	1,670,980 JPY	19,920 JPY	1,690,900 JPY	281,281 JPY	6,219 JPY	287,500 JPY
04.2024	6	1,442,602 JPY	14,598 JPY	1,457,200 JPY	228,378 JPY	5,322 JPY	233,700 JPY
05.2024	5	1,264,097 JPY	10,003 JPY	1,274,100 JPY	178,505 JPY	4,595 JPY	183,100 JPY
06.2024	5	1,085,024 JPY	5,976 JPY	1,091,000 JPY	179,073 JPY	4,027 JPY	183,100 JPY
07.2024	5	415,380 JPY	2,520 JPY	417,900 JPY	669,644 JPY	3,456 JPY	673,100 JPY
08.2024	4	263,803 JPY	1,197 JPY	265,000 JPY	151,577 JPY	1,323 JPY	152,900 JPY
09.2024	4	111,744 JPY	356 JPY	112,100 JPY	152,059 JPY	841 JPY	152,900 JPY
10.2024	3	0 JPY	0 JPY	0 JPY	111,744 JPY	356 JPY	112,100 JPY

Run Out Schedule

ROS on the relevant EoP on 2019/10/10

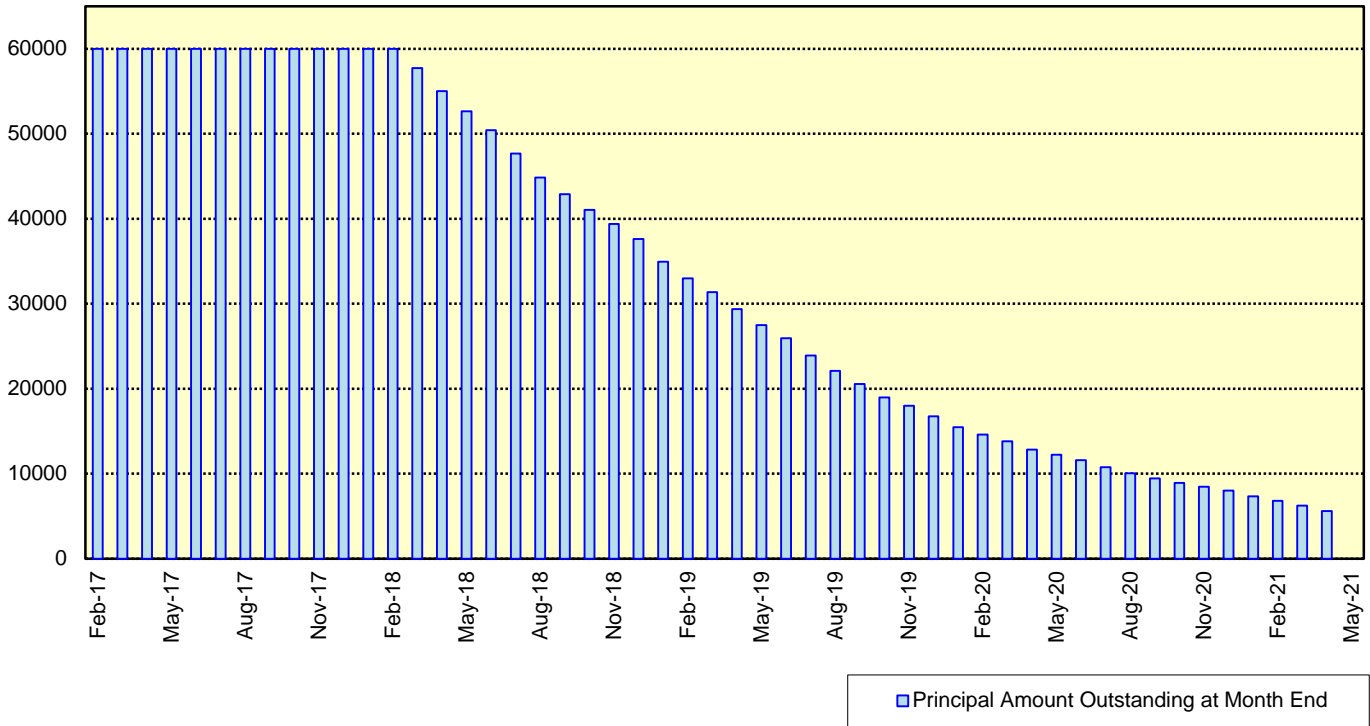
Next Payment Month	Number of Contracts	ABS Outstanding Principal	ABS Outstanding Interest	Outstanding Installment	ABS Remaining Principal	ABS Remaining Interest	ABS Remaining Installment
09.2019	15,868	21,452,943,409 JPY	576,910,891 JPY	22,029,854,300 JPY	0 JPY	0 JPY	0 JPY
10.2019	15,868	20,486,166,663 JPY	537,573,737 JPY	21,023,740,400 JPY	966,776,746 JPY	39,337,154 JPY	1,006,113,900 JPY
11.2019	15,395	19,220,839,691 JPY	499,835,609 JPY	19,720,675,300 JPY	1,265,326,972 JPY	37,738,128 JPY	1,303,065,100 JPY
12.2019	14,731	17,934,679,882 JPY	464,056,518 JPY	18,398,736,400 JPY	1,286,159,809 JPY	35,779,091 JPY	1,321,938,900 JPY
01.2020	14,348	17,064,960,780 JPY	430,547,120 JPY	17,495,507,900 JPY	869,719,102 JPY	33,509,398 JPY	903,228,500 JPY
02.2020	14,029	16,258,808,589 JPY	398,576,711 JPY	16,657,385,300 JPY	806,152,191 JPY	31,970,409 JPY	838,122,600 JPY
03.2020	13,564	15,258,391,118 JPY	368,019,382 JPY	15,626,410,500 JPY	1,000,417,471 JPY	30,557,329 JPY	1,030,974,800 JPY
04.2020	12,929	14,644,002,349 JPY	339,100,051 JPY	14,983,102,400 JPY	614,388,769 JPY	28,919,331 JPY	643,308,100 JPY
05.2020	12,713	13,986,073,067 JPY	311,288,933 JPY	14,297,362,000 JPY	657,929,282 JPY	27,811,118 JPY	685,740,400 JPY
06.2020	12,391	13,122,511,672 JPY	284,635,128 JPY	13,407,146,800 JPY	863,561,395 JPY	26,653,805 JPY	890,215,200 JPY
07.2020	12,046	12,345,905,589 JPY	259,560,111 JPY	12,605,465,700 JPY	776,606,083 JPY	25,075,017 JPY	801,681,100 JPY
08.2020	11,782	11,690,619,079 JPY	235,975,721 JPY	11,926,594,800 JPY	655,286,510 JPY	23,584,390 JPY	678,870,900 JPY
09.2020	11,452	11,109,454,318 JPY	213,591,682 JPY	11,323,046,000 JPY	581,164,761 JPY	22,384,039 JPY	603,548,800 JPY
10.2020	11,093	10,634,958,697 JPY	192,290,703 JPY	10,827,249,400 JPY	474,495,621 JPY	21,300,979 JPY	495,796,600 JPY
11.2020	10,866	10,173,521,711 JPY	171,931,489 JPY	10,345,453,200 JPY	461,436,986 JPY	20,359,214 JPY	481,796,200 JPY
12.2020	10,616	9,384,060,788 JPY	152,477,812 JPY	9,536,538,600 JPY	789,460,923 JPY	19,453,677 JPY	808,914,600 JPY
01.2021	10,318	8,766,678,266 JPY	134,597,134 JPY	8,901,275,400 JPY	617,382,522 JPY	17,880,678 JPY	635,263,200 JPY
02.2021	9,916	8,105,305,713 JPY	117,879,087 JPY	8,223,184,800 JPY	661,372,553 JPY	16,718,047 JPY	678,090,600 JPY
03.2021	9,307	7,343,624,323 JPY	102,401,777 JPY	7,446,026,100 JPY	761,681,390 JPY	15,477,310 JPY	777,158,700 JPY
04.2021	8,444	6,871,418,770 JPY	88,335,530 JPY	6,959,754,300 JPY	472,205,553 JPY	14,066,247 JPY	486,271,800 JPY
05.2021	8,013	6,330,728,235 JPY	75,205,765 JPY	6,405,934,000 JPY	640,690,535 JPY	13,129,765 JPY	553,820,300 JPY
06.2021	7,405	5,685,678,858 JPY	63,126,442 JPY	5,748,805,300 JPY	645,049,377 JPY	12,079,323 JPY	657,128,700 JPY
07.2021	6,788	4,971,180,718 JPY	52,336,182 JPY	5,023,516,900 JPY	714,498,140 JPY	10,790,260 JPY	725,288,400 JPY
08.2021	6,146	4,333,849,564 JPY	42,919,336 JPY	4,376,768,900 JPY	637,331,154 JPY	9,416,846 JPY	646,748,000 JPY
09.2021	5,418	3,486,536,442 JPY	34,658,458 JPY	3,521,194,900 JPY	847,313,122 JPY	8,260,878 JPY	855,574,000 JPY
10.2021	4,390	2,946,690,100 JPY	27,977,600 JPY	2,974,667,700 JPY	539,846,342 JPY	6,680,858 JPY	546,527,200 JPY
11.2021	3,765	2,264,727,047 JPY	22,294,053 JPY	2,287,021,100 JPY	681,963,053 JPY	5,683,547 JPY	687,646,600 JPY
12.2021	2,910	1,884,160,433 JPY	17,856,167 JPY	1,902,016,600 JPY	380,566,614 JPY	4,437,886 JPY	385,004,500 JPY
01.2022	2,603	1,617,311,973 JPY	14,158,527 JPY	1,631,470,500 JPY	266,848,460 JPY	3,697,640 JPY	270,546,100 JPY
02.2022	2,343	1,341,065,315 JPY	10,985,385 JPY	1,352,050,700 JPY	276,246,658 JPY	3,173,142 JPY	279,419,800 JPY
03.2022	2,026	962,389,807 JPY	8,346,093 JPY	970,735,900 JPY	378,675,508 JPY	2,639,292 JPY	381,314,800 JPY
04.2022	1,506	798,931,508 JPY	6,387,792 JPY	805,319,300 JPY	163,458,299 JPY	1,958,301 JPY	165,416,600 JPY
05.2022	1,291	623,883,149 JPY	4,745,051 JPY	628,628,200 JPY	175,048,359 JPY	1,642,741 JPY	176,691,100 JPY
06.2022	1,034	443,473,422 JPY	3,423,678 JPY	446,897,100 JPY	180,409,727 JPY	1,321,373 JPY	181,731,100 JPY
07.2022	778	320,014,639 JPY	2,448,861 JPY	322,463,500 JPY	123,458,783 JPY	974,817 JPY	124,433,600 JPY
08.2022	622	231,052,027 JPY	1,727,573 JPY	232,779,600 JPY	88,962,612 JPY	721,288 JPY	89,683,900 JPY
09.2022	443	131,375,181 JPY	1,190,019 JPY	132,565,200 JPY	99,676,846 JPY	537,554 JPY	100,214,400 JPY
10.2022	285	70,301,063 JPY	861,537 JPY	71,162,600 JPY	61,074,118 JPY	328,482 JPY	61,402,600 JPY
11.2022	192	41,823,888 JPY	674,212 JPY	42,498,100 JPY	28,477,175 JPY	187,325 JPY	28,664,500 JPY
12.2022	143	32,361,851 JPY	550,449 JPY	32,912,300 JPY	9,462,037 JPY	123,763 JPY	9,585,800 JPY
01.2023	123	26,474,735 JPY	454,065 JPY	26,928,800 JPY	5,887,116 JPY	96,384 JPY	5,983,500 JPY
02.2023	110	22,337,636 JPY	374,564 JPY	22,712,200 JPY	4,137,099 JPY	79,501 JPY	4,216,600 JPY
03.2023	95	18,754,785 JPY	307,015 JPY	19,061,800 JPY	3,582,851 JPY	67,549 JPY	3,650,400 JPY
04.2023	76	15,831,987 JPY	249,913 JPY	16,081,900 JPY	2,922,798 JPY	57,102 JPY	2,979,900 JPY
05.2023	68	13,183,680 JPY	201,520 JPY	13,385,200 JPY	2,648,307 JPY	48,393 JPY	2,696,700 JPY
06.2023	52	10,404,056 JPY	161,044 JPY	10,565,100 JPY	2,779,624 JPY	40,476 JPY	2,820,100 JPY
07.2023	39	7,842,728 JPY	128,572 JPY	7,971,300 JPY	2,561,328 JPY	32,472 JPY	2,593,800 JPY
08.2023	34	6,136,591 JPY	103,909 JPY	6,240,500 JPY	1,706,137 JPY	24,663 JPY	1,730,800 JPY
09.2023	27	5,101,973 JPY	84,527 JPY	5,186,500 JPY	1,034,618 JPY	19,382 JPY	1,054,000 JPY
10.2023	20	4,300,381 JPY	68,319 JPY	4,368,700 JPY	801,592 JPY	16,208 JPY	817,800 JPY
11.2023	11	3,839,479 JPY	54,621 JPY	3,894,100 JPY	460,902 JPY	13,698 JPY	474,600 JPY
12.2023	10	2,815,308 JPY	42,392 JPY	2,857,700 JPY	1,024,171 JPY	12,229 JPY	1,036,400 JPY
01.2024	9	2,287,675 JPY	33,425 JPY	2,321,100 JPY	527,633 JPY	8,967 JPY	536,600 JPY
02.2024	8	1,952,261 JPY	26,139 JPY	1,978,400 JPY	335,414 JPY	7,286 JPY	342,700 JPY
03.2024	7	1,670,980 JPY	19,920 JPY	1,690,900 JPY	281,281 JPY	6,219 JPY	287,500 JPY
04.2024	6	1,442,602 JPY	14,598 JPY	1,457,200 JPY	228,378 JPY	5,322 JPY	233,700 JPY
05.2024	5	1,264,097 JPY	10,003 JPY	1,274,100 JPY	178,505 JPY	4,595 JPY	183,100 JPY
06.2024	5	1,085,024 JPY	5,976 JPY	1,091,000 JPY	179,073 JPY	4,027 JPY	183,100 JPY
07.2024	5	415,380 JPY	2,520 JPY	417,900 JPY	669,644 JPY	3,456 JPY	673,100 JPY
08.2024	4	263,803 JPY	1,197 JPY	265,000 JPY	151,577 JPY	1,323 JPY	152,900 JPY
09.2024	4	111,744 JPY	356 JPY	112,100 JPY	152,059 JPY	841 JPY	152,900 JPY
10.2024	3	0 JPY	0 JPY	0 JPY	111,744 JPY	356 JPY	112,100 JPY

**Expected Amortisation**

**Expected Amortization to the Second Trust**

JPY mil.

Assuming a Clean-Up Call at 10% of the Initial Outstanding Balance, annual prepayments of 10% and 0% defaults.





**Distribution by Sub-Servicer**

Sub-Servicer	Number of Loans	Percentage of Loans	Outstanding Principal Balance	Percentage of Balance
Cedyna	9,078	57.21 %	12,431,255,322 JPY	57.95 %
Jaccs	6,790	42.79 %	9,021,688,087 JPY	42.05 %
<b>Total</b>	<b>15,868</b>	<b>100.00 %</b>	<b>21,452,943,409 JPY</b>	<b>100.00 %</b>

**Distribution by Brand**

Make	Number of Loans	Percentage of Loans	Outstanding Discounted Principal Balance	Percentage of Balance
VW	11,253	70.92 %	13,755,467,957 JPY	64.12 %
Audi	4,604	29.01 %	7,672,191,342 JPY	35.76 %
Bentley	5	0.03 %	22,184,600 JPY	0.10 %
Lamborghini	0	0.00 %	0 JPY	0.00 %
Other	6	0.04 %	3,099,510 JPY	0.01 %
<b>Total</b>	<b>15,868</b>	<b>100.00 %</b>	<b>21,452,943,409 JPY</b>	<b>100.00 %</b>

**Distribution by New and Used**
**Distribution by New and Used**

New or Used	Number of Loans	Percentage of Loans	Outstanding Discounted Principal Balance	Percentage of Balance
New	10,138	63.89 %	16,127,508,349 JPY	75.18 %
Used	5,329	33.58 %	5,195,992,068 JPY	24.22 %
Used (Prolonged)	401	2.53 %	129,442,992 JPY	0.60 %
<b>Total</b>	<b>15,868</b>	<b>100.00 %</b>	<b>21,452,943,409 JPY</b>	<b>100.00 %</b>

**Distribution by Brand New and Used**

New or Used	Number of Loans	Percentage of Loans	Outstanding Discounted Principal Balance	Percentage of Balance
VW New	8,057	50.78 %	11,437,782,853 JPY	53.32 %
VW Used	2,934	18.49 %	2,260,751,647 JPY	10.54 %
VW Used (Prolonged)	262	1.65 %	56,933,457 JPY	0.27 %
Audi New	2,078	13.10 %	4,679,661,986 JPY	21.81 %
Audi Used	2,387	15.04 %	2,920,019,821 JPY	13.61 %
Audi Used (Prolonged)	139	0.88 %	72,509,535 JPY	0.34 %
Other	11	0.07 %	25,284,110 JPY	0.12 %
<b>Total</b>	<b>15,868</b>	<b>100.00 %</b>	<b>21,452,943,409 JPY</b>	<b>100.00 %</b>

## Distribution by Product Type

### Loan Type List

Loan Type	Description
100	Volkswagen Owner's Plan
100	Audi Owner's Plan
100	Lamborghini Auto Loan
100	Bentley Auto Loan
101	Twin Loan
105	Refinanced Volkswagen Solutions
106	Refinanced Volkswagen Das Welt Auto with refinance option *
106	Refinanced Audi S-Loan/ S-Loan Plus
106	Refinanced Lamborghini Hyper Premium Plan
106	Refinanced Bentley My Flying B
140	Volkswagen Solutions
150	Volkswagen Das Welt Auto with refinance option **
150	Audi S-Loan
150	Lamborghini Hyper Premium Plan
150	Bentley My Flying B
151	Audi S-Loan Plus

(\*) The name was changed from "Refinanced Volkswagen GUC with refinance option" effective from 1 February 2012.

No other changes were made to auto loan agreements.

(\*\*) The name was changed from "Volkswagen GUC with refinance option" effective from 1 February 2012.

No other changes were made to auto loan agreements.

### Product Type

Loan Type	Number of Loans	Percentage of Loans	Outstanding Discounted Principal Balance	Percentage of Balance
100	2,481	15.64 %	2,054,708,112 JPY	9.58 %
101	0	0.00 %	0 JPY	0.00 %
105	260	1.64 %	56,353,423 JPY	0.26 %
106	141	0.89 %	73,089,569 JPY	0.34 %
140-VFJ	1,172	7.39 %	1,693,395,175 JPY	7.89 %
140-Dealer	6,347	40.00 %	9,249,686,795 JPY	43.12 %
150	5,328	33.58 %	8,056,112,711 JPY	37.55 %
151	139	0.88 %	269,597,624 JPY	1.26 %
<b>Total</b>	<b>15,868</b>	<b>100.00 %</b>	<b>21,452,943,409 JPY</b>	<b>100.00 %</b>

### Credit Type

Credit Type	Number of Loans	Percentage of Loans	Outstanding Discounted Principal Balance	Percentage of Balance
Balloon Type Loan	12,986	81.84 %	19,268,792,305 JPY	89.82 %
Equal Instalment Type Loan	2,882	18.16 %	2,184,151,104 JPY	10.18 %
<b>Total</b>	<b>15,868</b>	<b>100.00 %</b>	<b>21,452,943,409 JPY</b>	<b>100.00 %</b>

**Distribution by RV**

Loan Type	Number of Loans	Percentage of Balance	Outstanding Discounted Principal Balance
100/101/105/106	2,882	10.18 %	2,184,151,104 JPY
140-VFJ (excl. balloon)		3.66 %	784,279,614 JPY
140-VFJ (balloon)		4.24 %	909,115,561 JPY
140-VFJ	1,172	7.89 %	1,693,395,175 JPY
140-Dealer (excl. balloon)		19.98 %	4,287,244,754 JPY
140-Dealer (balloon)		23.13 %	4,962,442,041 JPY
140-Dealer	6,347	43.12 %	9,249,686,795 JPY
150 (excl. balloon)		14.90 %	3,196,897,073 JPY
150 (balloon)		22.65 %	4,859,215,638 JPY
150	5,328	37.55 %	8,056,112,711 JPY
151 (excl. balloon)		0.17 %	36,523,510 JPY
151 (balloon)		1.09 %	233,074,114 JPY
151	139	1.26 %	269,597,624 JPY
<b>Total</b>	<b>15,868</b>	<b>100.00 %</b>	<b>21,452,943,409 JPY</b>

Type of Payment Portion	Percentage of Balance	Outstanding Discounted Principal Balance
Monthly Installment Portion	48.89 %	10,489,096,055 JPY
Balloon Portion	51.11 %	10,963,847,354 JPY
<b>Total</b>	<b>100.00 %</b>	<b>21,452,943,409 JPY</b>

**Distribution by Brand New and Used**
**Audi**

New or Used	Number of Loans	Percentage of Loans	Outstanding Discounted Principal Balance	Percentage of Balance
New	2,078	45.13 %	4,679,661,986 JPY	61.00 %
Used	2,526	54.87 %	2,992,529,356 JPY	39.00 %
<b>Total</b>	<b>4,604</b>	<b>100.00 %</b>	<b>7,672,191,342 JPY</b>	<b>100.00 %</b>

**Bentley**

New or Used	Number of Loans	Percentage of Loans	Outstanding Discounted Principal Balance	Percentage of Balance
New	3	60.00 %	10,063,510 JPY	45.36 %
Used	2	40.00 %	12,121,090 JPY	54.64 %
<b>Total</b>	<b>5</b>	<b>100.00 %</b>	<b>22,184,600 JPY</b>	<b>100.00 %</b>

**Lamborghini**

New or Used	Number of Loans	Percentage of Loans	Outstanding Discounted Principal Balance	Percentage of Balance
New	0	0.00 %	0 JPY	0.00 %
Used	0	0.00 %	0 JPY	0.00 %
<b>Total</b>	<b>0</b>	<b>0.00 %</b>	<b>0 JPY</b>	<b>0.00 %</b>

**VW**

New or Used	Number of Loans	Percentage of Loans	Outstanding Discounted Principal Balance	Percentage of Balance
New	8,057	71.60 %	11,437,782,853 JPY	83.15 %
Used	3,196	28.40 %	2,317,685,104 JPY	16.85 %
<b>Total</b>	<b>11,253</b>	<b>100.00 %</b>	<b>13,755,467,957 JPY</b>	<b>100.00 %</b>

**OTHER**

New or Used	Number of Loans	Percentage of Loans	Outstanding Discounted Principal Balance	Percentage of Balance
New	0	0.00 %	0 JPY	0.00 %
Used	6	100.00 %	3,099,510 JPY	100.00 %
<b>Total</b>	<b>6</b>	<b>100.00 %</b>	<b>3,099,510 JPY</b>	<b>100.00 %</b>

### Distribution by Customer Type

#### Customer Type

Customer Type	Number of Loans	Percentage of Loans	Outstanding Discounted Principal Balance	Percentage of Balance
Retail	14,514	91.47 %	18,955,201,682 JPY	88.36 %
Corporate	1,354	8.53 %	2,497,741,727 JPY	11.64 %
<b>Total</b>	<b>15,868</b>	<b>100.00 %</b>	<b>21,452,943,409 JPY</b>	<b>100.00 %</b>

**Distribution by Outstanding Discounted Principal Balance**

Outstanding Discounted Principal Balance	Number of Loans	Percentage of Loans	Outstanding Discounted Principal Balance	Percentage of Balance
<= 500,000 JPY	1,994	12.57 %	563,694,346 JPY	2.63 %
500,001 JPY - 1,000,000 JPY	3,579	22.55 %	2,750,941,022 JPY	12.82 %
1,000,001 JPY - 1,500,000 JPY	4,617	29.10 %	5,742,717,493 JPY	26.77 %
1,500,001 JPY - 2,000,000 JPY	3,132	19.74 %	5,392,788,465 JPY	25.14 %
2,000,001 JPY - 2,500,000 JPY	1,264	7.97 %	2,787,329,893 JPY	12.99 %
2,500,001 JPY - 3,000,000 JPY	587	3.70 %	1,588,060,523 JPY	7.40 %
3,000,001 JPY - 3,500,000 JPY	319	2.01 %	1,031,299,711 JPY	4.81 %
3,500,001 JPY - 4,000,000 JPY	172	1.08 %	638,559,247 JPY	2.98 %
4,000,001 JPY - 4,500,000 JPY	98	0.62 %	410,403,640 JPY	1.91 %
4,500,001 JPY - 5,000,000 JPY	56	0.35 %	263,084,540 JPY	1.23 %
5,000,001 JPY - 6,000,000 JPY	42	0.26 %	228,812,804 JPY	1.07 %
6,000,001 JPY - 7,000,000 JPY	5	0.03 %	31,879,131 JPY	0.15 %
7,000,001 JPY - 8,000,000 JPY	2	0.01 %	15,212,733 JPY	0.07 %
8,000,001 JPY - 9,000,000 JPY	1	0.01 %	8,159,861 JPY	0.04 %
9,000,001 JPY - 10,000,000 JPY	0	0.00 %	0 JPY	0.00 %
>= 10,000,001 JPY	0	0.00 %	0 JPY	0.00 %
<b>Total</b>	<b>15,868</b>	<b>100.00 %</b>	<b>21,452,943,409 JPY</b>	<b>100.00 %</b>

**Statistics**

<b>Minimum</b> Outstanding Discounted Principal Balance	6,082 JPY
<b>Maximum</b> Outstanding Discounted Principal Balance	8,159,861 JPY
<b>Average</b> Outstanding Discounted Principal Balance	1,351,963 JPY



**Distribution by Original Principal Amount**

Original Principal Balance	Number of Loans	Percentage of Loans	Outstanding Discounted Principal Balance	Percentage of Balance
<= 500,000 JPY	52	0.33 %	8,411,294 JPY	0.04 %
500,001 JPY - 1,000,000 JPY	742	4.68 %	258,843,014 JPY	1.21 %
1,000,001 JPY - 1,500,000 JPY	1,672	10.54 %	978,784,435 JPY	4.56 %
1,500,001 JPY - 2,000,000 JPY	2,658	16.75 %	2,284,966,320 JPY	10.65 %
2,000,001 JPY - 2,500,000 JPY	2,876	18.12 %	3,278,752,394 JPY	15.28 %
2,500,001 JPY - 3,000,000 JPY	2,877	18.13 %	3,992,383,238 JPY	18.61 %
3,000,001 JPY - 3,500,000 JPY	1,895	11.94 %	3,126,793,062 JPY	14.58 %
3,500,001 JPY - 4,000,000 JPY	1,198	7.55 %	2,281,770,974 JPY	10.64 %
4,000,001 JPY - 4,500,000 JPY	627	3.95 %	1,370,300,877 JPY	6.39 %
4,500,001 JPY - 5,000,000 JPY	429	2.70 %	1,087,749,816 JPY	5.07 %
5,000,001 JPY - 6,000,000 JPY	413	2.60 %	1,173,656,579 JPY	5.47 %
6,000,001 JPY - 7,000,000 JPY	221	1.39 %	742,309,896 JPY	3.46 %
7,000,001 JPY - 8,000,000 JPY	91	0.57 %	342,743,117 JPY	1.60 %
8,000,001 JPY - 9,000,000 JPY	52	0.33 %	213,290,982 JPY	0.99 %
9,000,001 JPY - 10,000,000 JPY	37	0.23 %	178,669,225 JPY	0.83 %
>= 10,000,001 JPY	28	0.18 %	133,518,186 JPY	0.62 %
<b>Total</b>	<b>15,868</b>	<b>100.00 %</b>	<b>21,452,943,409 JPY</b>	<b>100.00 %</b>

**Statistics**

<b>Minimum</b> Original Principal Balance	210,000 JPY
<b>Maximum</b> Original Principal Balance	16,000,000 JPY
<b>Average</b> Original Principal Balance	2,710,896 JPY

**Distribution by Interest Rate paid by the Obligor**

Interest Rate paid by the Obligor	Number of Loans	Percentage of Loans	Outstanding Discounted Principal Balance	Percentage of Balance
< 0.900 %	257	1.62 %	509,473,994 JPY	2.37 %
0.900 % < 1.500 %	2,566	16.17 %	3,897,809,598 JPY	18.17 %
1.500 % < 2.000 %	6,114	38.53 %	9,011,138,579 JPY	42.00 %
2.000 % < 2.500 %	120	0.76 %	197,257,797 JPY	0.92 %
2.500 % < 3.000 %	4,313	27.18 %	5,468,877,938 JPY	25.49 %
3.000 % < 3.500 %	677	4.27 %	358,677,498 JPY	1.67 %
3.500 % < 4.000 %	1,798	11.33 %	1,998,148,731 JPY	9.31 %
4.000 % < 4.500 %	23	0.14 %	11,559,274 JPY	0.05 %
4.500 % < 5.000 %	0	0.00 %	0 JPY	0.00 %
5.000 % or more	0	0.00 %	0 JPY	0.00 %
<b>Total</b>	<b>15,868</b>	<b>100.00 %</b>	<b>21,452,943,409 JPY</b>	<b>100.00 %</b>

<b>Statistics</b>	
<b>Minimum</b> Interest Rate	0.10 %
<b>Maximum</b> Interest Rate	4.49 %
<b>Weighted Average</b> Interest Rate	2.17 %

**Distribution by Original Term**

Length of Original Term (months)	Number of Loans	Percentage of Loans	Outstanding Discounted Principal Balance	Percentage of Balance
6 - 12	0	0.00 %	0 JPY	0.00 %
13 - 18	0	0.00 %	0 JPY	0.00 %
19 - 24	16	0.10 %	3,618,721 JPY	0.02 %
25 - 30	10	0.06 %	1,754,248 JPY	0.01 %
31 - 36	2,919	18.40 %	4,423,043,914 JPY	20.62 %
37 - 42	38	0.24 %	10,466,368 JPY	0.05 %
43 - 48	1,003	6.32 %	737,860,092 JPY	3.44 %
49 - 54	19	0.12 %	10,834,407 JPY	0.05 %
55 - 60	11,196	70.56 %	15,423,292,258 JPY	71.89 %
61 - 66	13	0.08 %	13,003,390 JPY	0.06 %
67 - 72	516	3.25 %	598,008,917 JPY	2.79 %
73 - 84	138	0.87 %	231,061,094 JPY	1.08 %
<b>Total</b>	<b>15,868</b>	<b>100.00 %</b>	<b>21,452,943,409 JPY</b>	<b>100.00 %</b>

<b>Statistics</b>	
<b>Minimum</b> Original Term in months	24
<b>Maximum</b> Original Term in months	84
<b>Weighted Average</b> Original Term in months	55.21

**Distribution by Remaining Term**

Length of Remaining Term (months)	Number of Loans	Percentage of Loans	Outstanding Discounted Principal Balance	Percentage of Balance
<= 12	4,775	30.09 %	5,447,267,269 JPY	25.39 %
13 - 18	2,649	16.69 %	3,052,538,954 JPY	14.23 %
19 - 24	4,054	25.55 %	5,519,716,781 JPY	25.73 %
25 - 30	2,884	18.17 %	4,741,962,465 JPY	22.10 %
31 - 36	1,221	7.69 %	2,147,621,219 JPY	10.01 %
37 - 42	209	1.32 %	389,073,031 JPY	1.81 %
43 - 48	56	0.35 %	107,099,441 JPY	0.50 %
49 - 54	14	0.09 %	30,635,569 JPY	0.14 %
55 - 60	3	0.02 %	8,098,208 JPY	0.04 %
61 - 66	3	0.02 %	8,930,472 JPY	0.04 %
67 - 72	0	0.00 %	0 JPY	0.00 %
73 - 84	0	0.00 %	0 JPY	0.00 %
<b>Total</b>	<b>15,868</b>	<b>100.00 %</b>	<b>21,452,943,409 JPY</b>	<b>100.00 %</b>

Statistics	
<b>Minimum</b> Remaining Term in months	1
<b>Maximum</b> Remaining Term in months	61
<b>Weighted Average</b> Remaining Term in months	19.89

**Distribution by Seasoning**

Seasoning (months)	Number of Loans	Percentage of Loans	Outstanding Discounted Principal Balance	Percentage of Balance
<= 12	0	0.00 %	0 JPY	0.00 %
13 - 18	0	0.00 %	0 JPY	0.00 %
19 - 24	486	3.06 %	914,988,235 JPY	4.27 %
25 - 30	2,636	16.61 %	4,439,797,447 JPY	20.70 %
31 - 36	5,366	33.82 %	7,998,997,827 JPY	37.29 %
37 - 42	4,311	27.17 %	5,347,539,800 JPY	24.93 %
43 - 48	1,824	11.49 %	1,960,526,172 JPY	9.14 %
49 - 54	685	4.32 %	493,156,783 JPY	2.30 %
55 - 60	490	3.09 %	267,392,074 JPY	1.25 %
61 - 66	36	0.23 %	18,536,783 JPY	0.09 %
67 - 72	25	0.16 %	7,460,939 JPY	0.03 %
73 - 84	9	0.06 %	4,547,349 JPY	0.02 %
<b>Total</b>	<b>15,868</b>	<b>100.00 %</b>	<b>21,452,943,409 JPY</b>	<b>100.00 %</b>

Statistics	
Minimum Seasoning in months	22
Maximum Seasoning in months	81
Weighted Average Seasoning in months	35.32

**Distribution by Type of Car**
**Type of Car**

Type of Car	Number of Loans	Percentage of Loans	Outstanding Discounted Principal Balance	Percentage of Balance
New	10,138	63.89 %	16,127,508,349 JPY	75.18 %
Used	5,730	36.11 %	5,325,435,060 JPY	24.82 %
<b>Total</b>	<b>15,868</b>	<b>100.00 %</b>	<b>21,452,943,409 JPY</b>	<b>100.00 %</b>

**Type of Car: Only Balloon Loans**

Type of Car	Number of Loans	Percentage of Loans	Outstanding Discounted Principal Balance	Percentage of Balance
New	9,493	73.10 %	15,476,134,163 JPY	80.32 %
Used	3,493	26.90 %	3,792,658,142 JPY	19.68 %
<b>Total</b>	<b>12,986</b>	<b>100.00 %</b>	<b>19,268,792,305 JPY</b>	<b>100.00 %</b>

**Type of Car: Only Equal Instalment Loans**

Type of Car	Number of Loans	Percentage of Loans	Outstanding Discounted Principal Balance	Percentage of Balance
New	645	22.38 %	651,374,186 JPY	29.82 %
Used	2,237	77.62 %	1,532,776,918 JPY	70.18 %
<b>Total</b>	<b>2,882</b>	<b>100.00 %</b>	<b>2,184,151,104 JPY</b>	<b>100.00 %</b>

**Distribution by Brand and Model**

Make	Model	Number of Loans	Percentage of Loans	Outstanding Discounted Principal Balance	Percentage of Balance
<b>Audi</b>	A1	436	2.75 %	401,710,076 JPY	1.87 %
	A3	1,015	6.40 %	1,248,473,351 JPY	5.82 %
	A4	1,020	6.43 %	1,832,242,840 JPY	8.54 %
	A5	259	1.63 %	460,323,606 JPY	2.15 %
	A6	324	2.04 %	605,275,889 JPY	2.82 %
	A7	115	0.72 %	290,706,825 JPY	1.36 %
	A8	31	0.20 %	76,299,596 JPY	0.36 %
	S1	45	0.28 %	68,015,343 JPY	0.32 %
	S3	146	0.92 %	279,274,963 JPY	1.30 %
	S4	49	0.31 %	116,141,984 JPY	0.54 %
	S5	24	0.15 %	55,886,196 JPY	0.26 %
	S6	19	0.12 %	55,234,860 JPY	0.26 %
	S7	12	0.08 %	33,162,431 JPY	0.15 %
	S8	5	0.03 %	19,166,016 JPY	0.09 %
	RS3	16	0.10 %	44,353,425 JPY	0.21 %
	RS4	10	0.06 %	21,406,117 JPY	0.10 %
	RS5	10	0.06 %	29,610,207 JPY	0.14 %
	RS6	5	0.03 %	22,752,400 JPY	0.11 %
	RS7	5	0.03 %	20,154,414 JPY	0.09 %
	Q2	49	0.31 %	105,919,403 JPY	0.49 %
	Q3	364	2.29 %	555,273,968 JPY	2.59 %
	Q5	203	1.28 %	370,880,833 JPY	1.73 %
	Q7	92	0.58 %	316,282,007 JPY	1.47 %
	RSQ3	13	0.08 %	41,292,641 JPY	0.19 %
	TT	332	2.09 %	584,825,091 JPY	2.73 %
	R8	5	0.03 %	17,526,860 JPY	0.08 %
	AUDI OTHERS	0	0.00 %	0 JPY	0.00 %
	<b>Subtotal</b>	<b>4,604</b>	<b>29.01 %</b>	<b>7,672,191,342 JPY</b>	<b>35.76 %</b>
<b>Bentley</b>	ARNAGE	0	0.00 %	0 JPY	0.00 %
	AZURE	0	0.00 %	0 JPY	0.00 %
	BENTAYGA	1	0.01 %	5,257,017 JPY	0.02 %
	CONTINENTAL	4	0.03 %	16,927,583 JPY	0.08 %
	FLYING SPUR	0	0.00 %	0 JPY	0.00 %
	MULSANNE	0	0.00 %	0 JPY	0.00 %
	BENTLEY OTHERS	0	0.00 %	0 JPY	0.00 %
		<b>Subtotal</b>	<b>5</b>	<b>0.03 %</b>	<b>22,184,600 JPY</b>
<b>Lamborghini</b>	AVENTADOR	0	0.00 %	0 JPY	0.00 %
	DIABLO	0	0.00 %	0 JPY	0.00 %
	GALLARDO	0	0.00 %	0 JPY	0.00 %
	HURACÁN	0	0.00 %	0 JPY	0.00 %
	MULCIELAGO	0	0.00 %	0 JPY	0.00 %
	LAMBORGHINI OTHERS	0	0.00 %	0 JPY	0.00 %
		<b>Subtotal</b>	<b>0</b>	<b>0.00 %</b>	<b>0 JPY</b>
<b>VW</b>	ARTEON	1	0.01 %	3,275,958 JPY	0.02 %
	BEETLE	1,103	6.95 %	1,255,595,482 JPY	5.85 %
	BORA	0	0.00 %	0 JPY	0.00 %
	EOS	0	0.00 %	0 JPY	0.00 %
	GOLF	4,400	27.73 %	5,770,984,541 JPY	26.90 %
	JETTA	4	0.03 %	524,720 JPY	0.00 %
	LUPO	1	0.01 %	949,932 JPY	0.00 %
	PASSAT	1,032	6.50 %	1,501,965,373 JPY	7.00 %
	POLO	2,297	14.48 %	2,183,738,851 JPY	10.18 %
	SCIROCCO	18	0.11 %	13,621,471 JPY	0.06 %
	SHARAN	380	2.39 %	547,058,621 JPY	2.55 %
	TIGUAN	388	2.45 %	639,230,274 JPY	2.98 %
	TOUAREG	34	0.21 %	58,798,812 JPY	0.27 %
	TOURAN	944	5.95 %	1,386,770,572 JPY	6.46 %
	UP	651	4.10 %	392,953,350 JPY	1.83 %
	VENTO	0	0.00 %	0 JPY	0.00 %
	VW OTHERS	0	0.00 %	0 JPY	0.00 %
	<b>Subtotal</b>	<b>11,253</b>	<b>70.91 %</b>	<b>13,755,467,957 JPY</b>	<b>64.10 %</b>
<b>Non VW Group Vehicles</b>		6	0.04 %	3,099,510 JPY	0.01 %
	<b>Subtotal</b>	<b>6</b>	<b>0.04 %</b>	<b>3,099,510 JPY</b>	<b>0.01 %</b>
	<b>Total</b>	<b>15,868</b>	<b>100.00 %</b>	<b>21,452,943,409 JPY</b>	<b>100.00 %</b>

**Geographic Distribution by Prefecture**

Prefecture	Number of Loans	Percentage of Loans	Outstanding Discounted Principal Balance	Percentage of Balance
Tokyo	2,272	14.32 %	3,464,014,063 JPY	16.15 %
Kanagawa	1,563	9.85 %	2,192,699,391 JPY	10.22 %
Aichi	1,110	7.00 %	1,461,001,316 JPY	6.81 %
Saitama	1,022	6.44 %	1,332,513,801 JPY	6.21 %
Osaka	868	5.47 %	1,227,957,419 JPY	5.72 %
Chiba	740	4.66 %	974,143,600 JPY	4.54 %
Fukuoka	662	4.17 %	920,862,427 JPY	4.29 %
Hokkaido	629	3.96 %	862,829,063 JPY	4.02 %
Hyogo	521	3.28 %	692,552,467 JPY	3.23 %
Ibaraki	515	3.25 %	638,599,834 JPY	2.98 %
Shizuoka	464	2.92 %	628,740,314 JPY	2.93 %
Tochigi	387	2.44 %	507,657,241 JPY	2.37 %
Hiroshima	397	2.50 %	501,550,804 JPY	2.34 %
Gunma	358	2.26 %	415,828,805 JPY	1.94 %
Kyoto	301	1.90 %	412,121,428 JPY	1.92 %
Miyagi	320	2.02 %	409,000,872 JPY	1.91 %
Nagano	260	1.64 %	311,697,343 JPY	1.45 %
Gifu	217	1.37 %	283,324,641 JPY	1.32 %
Okayama	198	1.25 %	273,986,898 JPY	1.28 %
Fukushima	216	1.36 %	261,089,753 JPY	1.22 %
Mie	214	1.35 %	258,276,650 JPY	1.20 %
Yamaguchi	196	1.24 %	251,065,737 JPY	1.17 %
Niigata	191	1.20 %	222,195,273 JPY	1.04 %
Oita	161	1.01 %	203,852,130 JPY	0.95 %
Kumamoto	140	0.88 %	186,795,444 JPY	0.87 %
Ishikawa	136	0.86 %	181,523,650 JPY	0.85 %
Yamanashi	122	0.77 %	173,937,018 JPY	0.81 %
Nara	134	0.84 %	173,681,709 JPY	0.81 %
Toyama	135	0.85 %	171,403,345 JPY	0.80 %
Kagoshima	117	0.74 %	168,752,749 JPY	0.79 %
Shiga	130	0.82 %	168,070,054 JPY	0.78 %
Yamagata	139	0.88 %	163,715,499 JPY	0.76 %
Wakayama	110	0.69 %	156,224,392 JPY	0.73 %
Fukui	103	0.65 %	141,304,632 JPY	0.66 %
Miyazaki	83	0.52 %	119,500,247 JPY	0.56 %
Iwate	88	0.55 %	109,429,479 JPY	0.51 %
Nagasaki	86	0.54 %	107,320,750 JPY	0.50 %
Tokushima	72	0.45 %	102,646,452 JPY	0.48 %
Ehime	75	0.47 %	93,428,754 JPY	0.44 %
Kagawa	72	0.45 %	92,324,066 JPY	0.43 %
Saga	73	0.46 %	89,430,177 JPY	0.42 %
Akita	56	0.35 %	75,637,737 JPY	0.35 %
Aomori	60	0.38 %	69,794,165 JPY	0.33 %
Shimane	51	0.32 %	69,702,510 JPY	0.32 %
Tottori	42	0.26 %	45,906,098 JPY	0.21 %
Kouchi	33	0.21 %	43,887,471 JPY	0.20 %
Okinawa	29	0.18 %	40,965,741 JPY	0.19 %
<b>Total</b>	<b>15,868</b>	<b>100.00 %</b>	<b>21,452,943,409 JPY</b>	<b>100.00 %</b>



### Distribution by Obligor Concentration

#### Distribution of Loan Contracts and Vehicles per Obligor

Contract Concentration	Number of Customers	Percentage of Customers	Number of Loans	Percentage of Loans	Outstanding Discounted Principal Balance	Percentage of Balance
1	15,287	96.64 %	15,287	96.34 %	20,573,878,215 JPY	95.90 %
2	507	3.21 %	550	3.47 %	821,752,679 JPY	3.83 %
3	22	0.14 %	26	0.16 %	49,103,529 JPY	0.23 %
4	3	0.02 %	5	0.03 %	8,208,986 JPY	0.04 %
5	0	0.00 %	0	0.00 %	0 JPY	0.00 %
6 - 10	0	0.00 %	0	0.00 %	0 JPY	0.00 %
11 or more	0	0.00 %	0	0.00 %	0 JPY	0.00 %
<b>Total</b>	<b>15,819</b>	<b>100.00 %</b>	<b>15,868</b>	<b>100.00 %</b>	<b>21,452,943,409 JPY</b>	<b>100.00 %</b>

#### Top 20 Obligor

Number	Number of Contracts	Outstanding Discounted Principal Balance	Percentage of Balance
1	2	10,854,944 JPY	0.05 %
2	1	8,159,861 JPY	0.04 %
3	1	7,844,985 JPY	0.04 %
4	1	7,367,748 JPY	0.03 %
5	1	6,964,229 JPY	0.03 %
6	2	6,653,580 JPY	0.03 %
7	2	6,317,832 JPY	0.03 %
8	1	6,302,432 JPY	0.03 %
9	1	6,295,615 JPY	0.03 %
10	1	6,292,776 JPY	0.03 %
11	1	6,024,079 JPY	0.03 %
12	1	5,990,403 JPY	0.03 %
13	1	5,963,063 JPY	0.03 %
14	1	5,919,406 JPY	0.03 %
15	1	5,896,010 JPY	0.03 %
16	1	5,895,051 JPY	0.03 %
17	1	5,873,331 JPY	0.03 %
18	1	5,838,629 JPY	0.03 %
19	1	5,836,517 JPY	0.03 %
20	1	5,736,227 JPY	0.03 %
<b>Total 1 -20</b>	<b>23</b>	<b>132,026,718 JPY</b>	<b>0.62 %</b>

Remarks:

Figures above are calculated based on each of the Sub-Servicers respectively and not across both of the Sub-Servicers.

### Distribution by Contract Start Month

Origination Month	Number of Loans	Percentage of Loans	Outstanding Discounted Principal Balance	Percentage of Balance
12.2012	3	0.02 %	300,212 JPY	0.00 %
01.2013	0	0.00 %	0 JPY	0.00 %
02.2013	2	0.01 %	443,537 JPY	0.00 %
03.2013	2	0.01 %	598,850 JPY	0.00 %
04.2013	0	0.00 %	0 JPY	0.00 %
05.2013	0	0.00 %	0 JPY	0.00 %
06.2013	0	0.00 %	0 JPY	0.00 %
07.2013	1	0.01 %	761,417 JPY	0.00 %
08.2013	1	0.01 %	2,443,333 JPY	0.01 %
09.2013	1	0.01 %	448,585 JPY	0.00 %
10.2013	2	0.01 %	58,955 JPY	0.00 %
11.2013	2	0.01 %	185,516 JPY	0.00 %
12.2013	6	0.04 %	1,256,383 JPY	0.01 %
01.2014	4	0.03 %	1,163,551 JPY	0.01 %
02.2014	10	0.06 %	4,347,949 JPY	0.02 %
03.2014	5	0.03 %	2,079,207 JPY	0.01 %
04.2014	5	0.03 %	2,350,272 JPY	0.01 %
05.2014	6	0.04 %	3,740,648 JPY	0.02 %
06.2014	7	0.04 %	2,776,924 JPY	0.01 %
07.2014	7	0.04 %	3,880,740 JPY	0.02 %
08.2014	6	0.04 %	3,708,992 JPY	0.02 %
09.2014	8	0.05 %	8,602,431 JPY	0.04 %
10.2014	69	0.43 %	28,388,722 JPY	0.13 %
11.2014	82	0.52 %	41,028,951 JPY	0.19 %
12.2014	107	0.67 %	61,136,113 JPY	0.28 %
01.2015	75	0.47 %	39,331,447 JPY	0.18 %
02.2015	149	0.94 %	88,904,410 JPY	0.41 %
03.2015	154	0.97 %	98,197,336 JPY	0.46 %
04.2015	64	0.40 %	40,356,072 JPY	0.19 %
05.2015	118	0.74 %	76,031,513 JPY	0.35 %
06.2015	118	0.74 %	84,989,844 JPY	0.40 %
07.2015	99	0.62 %	81,762,359 JPY	0.38 %
08.2015	132	0.83 %	111,819,659 JPY	0.52 %
09.2015	167	1.05 %	154,597,676 JPY	0.72 %
10.2015	141	0.89 %	135,019,259 JPY	0.63 %
11.2015	151	0.95 %	150,706,272 JPY	0.70 %
12.2015	315	1.99 %	311,392,394 JPY	1.45 %
01.2016	424	2.67 %	469,251,577 JPY	2.19 %
02.2016	626	3.95 %	739,558,994 JPY	3.45 %
03.2016	932	5.87 %	1,060,633,498 JPY	4.94 %
04.2016	453	2.85 %	545,184,490 JPY	2.54 %
05.2016	658	4.15 %	778,060,854 JPY	3.63 %
06.2016	673	4.24 %	843,798,077 JPY	3.93 %
07.2016	730	4.60 %	925,076,869 JPY	4.31 %
08.2016	865	5.45 %	1,194,786,012 JPY	5.57 %
09.2016	1,115	7.03 %	1,639,814,400 JPY	7.64 %
10.2016	1,065	6.71 %	1,503,281,049 JPY	7.01 %
11.2016	1,514	9.54 %	2,271,639,752 JPY	10.59 %
12.2016	570	3.59 %	867,775,686 JPY	4.05 %
01.2017	489	3.08 %	770,721,620 JPY	3.59 %
02.2017	613	3.86 %	945,765,320 JPY	4.41 %
03.2017	934	5.89 %	1,504,432,087 JPY	7.01 %
04.2017	353	2.22 %	577,730,978 JPY	2.69 %
05.2017	427	2.69 %	719,151,147 JPY	3.35 %
06.2017	441	2.78 %	764,273,280 JPY	3.56 %
07.2017	234	1.47 %	413,167,291 JPY	1.93 %
08.2017	247	1.56 %	461,042,664 JPY	2.15 %
09.2017	273	1.72 %	505,031,194 JPY	2.35 %
10.2017	149	0.94 %	273,398,019 JPY	1.27 %
11.2017	64	0.40 %	136,559,022 JPY	0.64 %
12.2017	0	0.00 %	0 JPY	0.00 %
01.2018	0	0.00 %	0 JPY	0.00 %
02.2018	0	0.00 %	0 JPY	0.00 %
03.2018	0	0.00 %	0 JPY	0.00 %
04.2018	0	0.00 %	0 JPY	0.00 %
05.2018	0	0.00 %	0 JPY	0.00 %
06.2018	0	0.00 %	0 JPY	0.00 %
07.2018	0	0.00 %	0 JPY	0.00 %
08.2018	0	0.00 %	0 JPY	0.00 %
09.2018	0	0.00 %	0 JPY	0.00 %
10.2018	0	0.00 %	0 JPY	0.00 %
11.2018	0	0.00 %	0 JPY	0.00 %
12.2018	0	0.00 %	0 JPY	0.00 %
01.2019	0	0.00 %	0 JPY	0.00 %
02.2019	0	0.00 %	0 JPY	0.00 %
03.2019	0	0.00 %	0 JPY	0.00 %
04.2019	0	0.00 %	0 JPY	0.00 %
05.2019	0	0.00 %	0 JPY	0.00 %
06.2019	0	0.00 %	0 JPY	0.00 %
07.2019	0	0.00 %	0 JPY	0.00 %
08.2019	0	0.00 %	0 JPY	0.00 %
09.2019	0	0.00 %	0 JPY	0.00 %
<b>Total</b>	<b>15,868</b>	<b>100.00 %</b>	<b>21,452,943,409 JPY</b>	<b>100.00 %</b>

### Distribution by Contract End Month

Maturity Month	Number of Loans	Percentage of Loans	Outstanding Discounted Principal Balance	Percentage of Balance
10.2019	473	2.98 %	486,184,874 JPY	2.27 %
11.2019	664	4.18 %	836,267,923 JPY	3.90 %
12.2019	383	2.41 %	413,572,689 JPY	1.93 %
01.2020	319	2.01 %	354,861,925 JPY	1.65 %
02.2020	465	2.93 %	470,835,609 JPY	2.19 %
03.2020	635	4.00 %	737,132,974 JPY	3.44 %
04.2020	216	1.36 %	281,105,307 JPY	1.31 %
05.2020	322	2.03 %	373,735,029 JPY	1.74 %
06.2020	345	2.17 %	414,364,114 JPY	1.93 %
07.2020	264	1.66 %	262,701,860 JPY	1.22 %
08.2020	330	2.08 %	399,524,774 JPY	1.86 %
09.2020	359	2.26 %	416,980,191 JPY	1.94 %
10.2020	227	1.43 %	258,394,886 JPY	1.20 %
11.2020	250	1.58 %	276,398,270 JPY	1.29 %
12.2020	298	1.88 %	293,980,703 JPY	1.37 %
01.2021	402	2.53 %	453,675,270 JPY	2.11 %
02.2021	609	3.84 %	740,232,984 JPY	3.45 %
03.2021	863	5.44 %	1,029,856,841 JPY	4.80 %
04.2021	431	2.72 %	526,591,868 JPY	2.45 %
05.2021	608	3.83 %	733,553,943 JPY	3.42 %
06.2021	617	3.89 %	799,399,706 JPY	3.73 %
07.2021	642	4.05 %	866,990,811 JPY	4.04 %
08.2021	728	4.59 %	1,037,962,942 JPY	4.84 %
09.2021	1,028	6.48 %	1,555,217,511 JPY	7.25 %
10.2021	625	3.94 %	983,550,741 JPY	4.58 %
11.2021	855	5.39 %	1,394,721,952 JPY	6.50 %
12.2021	307	1.93 %	499,846,132 JPY	2.33 %
01.2022	260	1.64 %	449,625,725 JPY	2.10 %
02.2022	317	2.00 %	543,568,862 JPY	2.53 %
03.2022	520	3.28 %	870,649,053 JPY	4.06 %
04.2022	215	1.35 %	343,104,734 JPY	1.60 %
05.2022	257	1.62 %	435,910,658 JPY	2.03 %
06.2022	256	1.61 %	458,097,923 JPY	2.14 %
07.2022	156	0.98 %	280,986,361 JPY	1.31 %
08.2022	179	1.13 %	316,830,372 JPY	1.48 %
09.2022	158	1.00 %	312,691,171 JPY	1.46 %
10.2022	93	0.59 %	185,909,807 JPY	0.87 %
11.2022	49	0.31 %	93,737,560 JPY	0.44 %
12.2022	20	0.13 %	32,997,662 JPY	0.15 %
01.2023	13	0.08 %	19,405,690 JPY	0.09 %
02.2023	15	0.09 %	25,330,523 JPY	0.12 %
03.2023	19	0.12 %	31,691,789 JPY	0.15 %
04.2023	8	0.05 %	12,886,803 JPY	0.06 %
05.2023	16	0.10 %	31,032,347 JPY	0.14 %
06.2023	13	0.08 %	21,390,463 JPY	0.10 %
07.2023	5	0.03 %	11,444,553 JPY	0.05 %
08.2023	7	0.04 %	15,846,752 JPY	0.07 %
09.2023	7	0.04 %	14,498,523 JPY	0.07 %
10.2023	9	0.06 %	16,559,176 JPY	0.08 %
11.2023	1	0.01 %	1,745,993 JPY	0.01 %
12.2023	1	0.01 %	4,049,521 JPY	0.02 %
01.2024	1	0.01 %	2,100,691 JPY	0.01 %
02.2024	1	0.01 %	2,688,052 JPY	0.01 %
03.2024	1	0.01 %	3,492,136 JPY	0.02 %
04.2024	1	0.01 %	2,549,148 JPY	0.01 %
05.2024	0	0.00 %	0 JPY	0.00 %
06.2024	0	0.00 %	0 JPY	0.00 %
07.2024	1	0.01 %	3,323,985 JPY	0.02 %
08.2024	0	0.00 %	0 JPY	0.00 %
09.2024	1	0.01 %	2,225,075 JPY	0.01 %
10.2024	3	0.02 %	8,930,472 JPY	0.04 %
<b>Total</b>	<b>15,868</b>	<b>100.00 %</b>	<b>21,452,943,409 JPY</b>	<b>100.00 %</b>

**Distribution by Monthly Payment**

Monthly Payment	Number of Loans	Percentage of Loans	Outstanding Discounted Principal Balance	Percentage of Balance
<= 10,000 JPY	791	4.98 %	732,645,353 JPY	3.42 %
10,001 JPY - 20,000 JPY	3,177	20.02 %	3,123,921,864 JPY	14.56 %
20,001 JPY - 30,000 JPY	4,523	28.50 %	5,193,713,329 JPY	24.21 %
30,001 JPY - 40,000 JPY	3,355	21.14 %	4,591,208,172 JPY	21.40 %
40,001 JPY - 50,000 JPY	1,744	10.99 %	2,769,202,931 JPY	12.91 %
50,001 JPY - 60,000 JPY	942	5.94 %	1,696,878,270 JPY	7.91 %
60,001 JPY - 70,000 JPY	471	2.97 %	993,332,765 JPY	4.63 %
70,001 JPY - 80,000 JPY	256	1.61 %	603,887,586 JPY	2.81 %
80,001 JPY - 90,000 JPY	175	1.10 %	440,523,409 JPY	2.05 %
90,001 JPY - 100,000 JPY	124	0.78 %	331,810,353 JPY	1.55 %
100,001 JPY - 110,000 JPY	77	0.49 %	215,062,160 JPY	1.00 %
110,001 JPY - 120,000 JPY	64	0.40 %	198,219,756 JPY	0.92 %
120,001 JPY - 130,000 JPY	51	0.32 %	156,531,813 JPY	0.73 %
130,001 JPY - 140,000 JPY	23	0.14 %	87,143,819 JPY	0.41 %
140,001 JPY - 150,000 JPY	29	0.18 %	95,482,632 JPY	0.45 %
>= 150,001 JPY	66	0.42 %	223,379,197 JPY	1.04 %
<b>Total</b>	<b>15,868</b>	<b>100.00 %</b>	<b>21,452,943,409 JPY</b>	<b>100.00 %</b>

**Distribution by Bonus Payment**

Bonus Payment	Number of Loans	Percentage of Loans	Outstanding Discounted Principal Balance	Percentage of Balance
No Bonus Payment	9,162	57.74 %	12,031,301,480 JPY	56.08 %
1 JPY - 25,000 JPY	178	1.12 %	173,347,624 JPY	0.81 %
25,001 JPY - 50,000 JPY	1,774	11.18 %	2,034,218,555 JPY	9.48 %
50,001 JPY - 75,000 JPY	653	4.12 %	845,708,484 JPY	3.94 %
75,001 JPY - 100,000 JPY	2,317	14.60 %	3,236,046,836 JPY	15.08 %
100,001 JPY - 125,000 JPY	308	1.94 %	443,189,568 JPY	2.07 %
125,001 JPY - 150,000 JPY	859	5.41 %	1,420,027,115 JPY	6.62 %
150,001 JPY - 175,000 JPY	89	0.56 %	159,234,101 JPY	0.74 %
175,001 JPY - 200,000 JPY	335	2.11 %	665,928,846 JPY	3.10 %
200,001 JPY - 225,000 JPY	23	0.14 %	48,355,960 JPY	0.23 %
225,001 JPY - 250,000 JPY	81	0.51 %	176,683,589 JPY	0.82 %
250,001 JPY - 275,000 JPY	5	0.03 %	11,824,642 JPY	0.06 %
275,001 JPY - 300,000 JPY	55	0.35 %	128,203,754 JPY	0.60 %
300,001 JPY - 325,000 JPY	2	0.01 %	4,048,772 JPY	0.02 %
325,001 JPY - 350,000 JPY	10	0.06 %	21,662,744 JPY	0.10 %
350,001 JPY - 375,000 JPY	0	0.00 %	0 JPY	0.00 %
375,001 JPY - 400,000 JPY	11	0.07 %	39,178,771 JPY	0.18 %
400,001 JPY - 425,000 JPY	0	0.00 %	0 JPY	0.00 %
425,001 JPY - 450,000 JPY	1	0.01 %	4,648,814 JPY	0.02 %
450,001 JPY - 475,000 JPY	0	0.00 %	0 JPY	0.00 %
475,001 JPY - 500,000 JPY	4	0.03 %	7,646,527 JPY	0.04 %
500,001 JPY or more	1	0.01 %	1,687,227 JPY	0.01 %
<b>Total</b>	<b>15,868</b>	<b>100.00 %</b>	<b>21,452,943,409 JPY</b>	<b>100.00 %</b>

**Distribution by Motor Type**

Motor Type	Number of Loans	Percentage of Loans	Outstanding Discounted Principal Balance	Percentage of Balance
EA 189	0	0.00 %	0 JPY	0.00 %
Other	15,868	100.00 %	21,452,943,409 JPY	100.00 %
<b>Total</b>	<b>15,868</b>	<b>100.00 %</b>	<b>21,452,943,409 JPY</b>	<b>100.00 %</b>

## Disclaimer

The following presentations contain forward-looking statements and information on the business development of the Volkswagen Group. These statements may be spoken or written and can be recognized by terms such as “expects”, “anticipates”, “intends”, “plans”, “believes”, “seeks”, “estimates”, “will” or words with similar meaning. These statements are based on assumptions, which we have made on the basis of the information available to us and which we consider to be realistic at the time of going to press. These assumptions relate in particular to the development of the economies of individual countries and markets, the regulatory framework and the development of the automotive industry. Therefore the estimates given involve a degree of risk, and the actual developments may differ from those forecast. The Volkswagen Group currently faces additional risks and uncertainty related to pending claims and investigations of Volkswagen Group members in a number of jurisdictions in connection with findings of irregularities relating to exhaust emissions from diesel engines in certain Volkswagen Group vehicles. The degree to which the Volkswagen Group may be negatively affected by these ongoing claims and investigations remains uncertain.

Consequently, a negative impact relating to ongoing claims or investigations, any unexpected fall in demand or economic stagnation in our key sales markets, such as in Western Europe (and especially Germany) or in the USA, Brazil or China, and trade disputes among major trading partners will have a corresponding impact on the development of our business. The same applies in the event of a significant shift in current exchange rates in particular relative to the US dollar, sterling, yen, Brazilian real, Chinese renminbi and Czech koruna.

If any of these or other risks occur, or if the assumptions underlying any of these statements prove incorrect, the actual results may significantly differ from those expressed or implied by such statements. We do not update forward-looking statements retrospectively. Such statements are valid on the date of publication and can be superseded.

This information does not constitute an offer to exchange or sell or an offer to exchange or buy any securities.

Under the brand “Volkswagen Financial Services – the key to mobility“ the subsidiaries of Volkswagen Financial Services AG as well as its sister company Volkswagen Bank GmbH render various services under the joint brand “Volkswagen Financial Services“. Such services are banking services (through Volkswagen Bank GmbH), leasing services (through Volkswagen Leasing GmbH), insurance services (through Volkswagen Versicherung AG, Volkswagen Autoversicherung AG) as well as mobility services (inter alia through Volkswagen Leasing GmbH). In addition, insurance products of other providers are offered.