

Deal Name: Driver Japan six

Originator: Volkswagen Financial Services Japan Ltd.
Gotenyama Trust Tower 17F
7-35 Kitashinagawa 4-chome, Shinagawa-ku
Tokyo 140-0001, Japan

Reporting Entity: Volkswagen Financial Services Japan Ltd.
Treasury Dept.
Gotenyama Trust Tower 17F
7-35 Kitashinagawa 4-chome, Shinagawa-ku
Tokyo 140-0001, Japan
Tel No.: +81(0)3-5792-7261
Fax No.: +81(0)3-3280-7365
E-mail: vwfsjp.abs@vwfs.com

**Trustor of the First Trust:
Servicer:** Volkswagen Financial Services Japan Ltd.

**Trustee of the First Trust:
Trustee of the Second Trust:** Deutsche Trust Company Limited Japan
Sanno Park Tower, 11-1,
Nagatacho 2-chome, Chiyoda-ku,
Tokyo, 100-6172, Japan
Trust Business Administration Department
Tel No.: +81(0)3-5156-5637
Fax No.: +81(0)3-5156-5658
E-mail: DB_Trust_Trust@list.db.com



Contents

Page	Tables of Contents
1	Front Page
2	Contents
3	Deal Overview
4	Deal Overview: Counterparties I
5	Deal Overview: Counterparties II
6	Information regarding the TBI and ABL to the Second Trust
7	Pool Information
8	Available Distribution
9	Waterfall
10	Credit Enhancement
11	Cumulative Gross Loss Ratio & Performance Trigger
12	Cumulative Gross Loss Ratio & Performance Trigger (Chart)
13	Default & Delinquencies
14	Run Out Schedule (Previous)
15	Run Out Schedule
16	Expected Amortization to the Second Trust
17	Sub-Servicer
18	Brand
19	New and Used
20	Product Type
21	RV
22	Brand New and Used
23	Customer Type
24	Outstanding Discounted Principal Balance
25	Original Principal Amount
26	Interest Rate paid by the Obligor
27	Original Term
28	Remaining Term
29	Seasoning
30	Type of Car
31	Brand and Model
32	Geographic Dist. by Prefecture
33	Obligor Concentration
34	Contract Start Month
35	Contract End Month
36	Monthly payment
37	Bonus payment
38	Mortor Type

Deal Overview

Cut Off Date:	2017/02/10		
Trust Commencement Date:	2017/02/23	Legal Maturity of the First Trust:	2025/06/27
Monthly Period:	2019/08/11	to	2019/09/10
Reporting Date:	2019/09/18		
Reporting Frequency:	monthly		
Period No.:	31		
Remittance Date:	2019/09/24		
Advance Payment Date:	2019/09/24		
Cash Adjustment Date:	2019/09/24		
Additional Entrustment Date:	2019/09/26		
Trust Calculation Date:	2019/09/26		
Trust Calculation Period:	2019/08/27	to	2019/09/26
First Trust Payment Date:	2019/09/27		
Second Trust Payment Date:	2019/09/30		
Interest Calculation Period:	2019/08/29	to	2019/09/30
Next Reporting Date:	2019/10/18		

Pool information at the Initial Cut off Date

	Number of Contracts	Outstanding Discounted Principal Balance	Outstanding Nominal Balance
Outstanding Pool	30,757	64,171,706,472 JPY	67,028,993,300 JPY

Credit Type	Percentage of Loans	Outstanding Discounted Principal Balance	Percentage of Balance
Balloon	76.13 %	55,443,642,000 JPY	86.40 %
Equal Instalment Loan	23.87 %	8,728,064,472 JPY	13.60 %
Total	100.00 %	64,171,706,472 JPY	100.00 %

Type of Car	Percentage of Loans	Outstanding Discounted Principal Balance	Percentage of Balance
New	66.66 %	49,506,381,305 JPY	77.15 %
Used	33.34 %	14,665,325,167 JPY	22.85 %
Total	100.00 %	64,171,706,472 JPY	100.00 %

Deal Overview: Counterparties I

Joint Lead Managers:

Shinsei Securities Co., Ltd.
 Nihonbashi Muromachi Nomura Building, 4-3,
 Nihonbashi-muromachi 2-chome,
 Chuo-ku,
 Tokyo 103-0022, Japan

BNP Paribas Securities (Japan) Limited
 GranTokyo North Tower, 9-1,
 Marunouchi 1-chome,
 Chiyoda-ku,
 Tokyo 100-6740, Japan

Trust Management Account Bank:

MUFG Bank, Ltd.
 4-2 Toranomom 1-chome,
 Minato-ku
 Tokyo 105-0001, Japan

Rating								
Moody's			Fitch			R&I		
Long Term	Short Term	Outlook	Long Term	Short Term	Outlook	Long Term	Short Term	Outlook
n.a.	n.a.	n.a.	n.a.	n.a.	n.a.	n.a.	n.a.	n.a.
n.a.	n.a.	n.a.	n.a.	n.a.	n.a.	n.a.	n.a.	n.a.
A1	P-1	Stable	A	F1	Stable	AA-	a-1+	Stable

Originator:

Trustor of the First Trust:

Servicer:

Volkswagen Financial Services Japan Ltd.
 Gotenyama Trust Tower 17F
 7-35 Kitashinagawa 4-chome, Shinagawa-ku
 Tokyo 140-0001, Japan

Trustee of the First Trust:

Trustee of the Second Trust:

Deutsche Trust Company Limited Japan
 Attn.: Driver Japan Six
 Trust Business Administration Department

ABL Lender to the First Trust:

Trustor of the Second Trust:

Shinsei Securities Co., Ltd.

Seller of the Trust Beneficial

Interest of the Second Trust

Shinsei Securities Co., Ltd.
 BNP Paribas Securities (Japan) Limited

Deal Overview: Counterparties II

Rating Agencies:

Moody's SF Japan K.K.

Attn.: Driver Japan six
 Structure Finance Group Monitoring Division
 5-1 Atago 2-chome, Minato-ku
 Tokyo 105-6220, Japan
 E-mail: monitor.ms fj@moodys.com

Fitch Ratings Japan Limited

Attn.: Driver Japan six
 Structured Finance
 Kojimachi Crystal City East Wing 3rd Floor,
 4-8 Kōjimachi, Chiyoda-ku,
 Tokyo 102-0083, Japan
 E-mail: tokyo.surveillance@fitchratings.com

Rating and Investment Information, Inc.

Attn.: Monitoring Group Department:
 Structured Finance Department
 TERRACE SQUARE, 3-22,
 Kanda Nishikicho, Chiyoda-ku,
 Tokyo 101-0054, Japan
 E-mail: sfmonitor@r-i.co.jp

Rating of VW

Volkswagen Financial Services AG

Volkswagen AG

Rating								
Moody's			Fitch			R&I		
Short Term	Long Term	Outlook	Short Term	Long Term	Outlook	Short Term	Long Term	Outlook
P-2	A3	Stable	n.a.	n.a.	n.a.	n.a.	n.a.	n.a.
P-2	A3	Stable	F1	BBB+	Stable	n.a.	n.a.	n.a.

Information regarding Trust Beneficial Interest of the Second Trust & Asset Backed Loan to the Second Trust
Rating Details
Rating at Issue Date

	TBI	ABL
Moody's	Aaa(sf)	Aaa(sf)
Fitch	AAAsf	AAAsf
R&I	AAA	AAA

Current Rating

	TBI	ABL
Moody's	Aaa(sf)	Aaa(sf)
Fitch	AAAsf	AAAsf
R&I	AAA	AAA

Information on TBI & ABL

	TBI	ABL
Initial Balance	39,200,000,000 JPY	20,800,000,000 JPY
Expected Maturity Date	2021/05/28	2021/05/28
Legal Maturity of the Second Trust	2025/06/30	2025/06/30
Payment Dates	28th	28th
Business Day Convention	Modified Following	Modified Following
Listing	None	—

Information on Interest

	TBI	ABL
Fixed/ Floating	Fixed	Fixed
Current Coupon	0.19%	0.19%
Day Count Convention	30/360	30/360

Selling Restriction

The holders of the Beneficial Interest and the ABL Lenders* are prohibited from dividing, assigning, pledging or creating any other security interest over any of the Beneficial Interest and the Asset Backed Loans without the prior written approval of the Trustee of the Second Trust.

(*)The holders of the Beneficial Interest and the ABL Lenders are limited to specified investors (*tokutei tousehika*) as defined under Paragraph 31 of Article 2 of the Financial Instruments and Exchange Act (Law no.25 of 1948 as amended).

Clean-Up Call

VWFS Japan as the Trustor of the First Trust has a right at its option to exercise a clean-up call to repurchase of all, but not part, of the outstanding Auto Loan Receivables from the Trustee of the First Trust on any Trust Calculation Date, the Discounted Principal Balance of all outstanding Auto Loan Receivables is expected to be less than ten percent (10%) of the Discounted Principal Balance of the Initial Auto Loan Receivables as of the Initial Cut-off Date after the distribution pursuant to Article 18.1 of the First Trust Agreement on the immediately following First Trust Payment Date.

Pool Information
Pool Balance on Initial Cut-Off Date

Status	Number of Contracts	Outstanding Discounted Principal Balance
Normal	30,757	64,171,706,472 JPY
Cancellation	0	0 JPY
Early Termination	0	0 JPY
Defaulted Receivables	0	0 JPY
Matured	0	0 JPY
Refinance Option	0	0 JPY
Repurchase	0	0 JPY
Total	30,757	64,171,706,472 JPY

Pool Balance before entrustment of Additional Auto Loan Receivables

Status	Number of Contracts on previous EoP	Outstanding Discounted Principal Balance on previous EoP	Number of Contracts "as Collections" during the relevant Monthly Period*	Outstanding Discounted Principal Balance "as Collections" during the relevant Monthly Period*	Number of Contracts EoP before entrustment of Additional Auto Loan Receivables	Outstanding Discounted Principal Balance EoP before entrustment of Additional Auto Loan Receivables
Normal	17,774	24,967,676,195 JPY	16,886	606,834,160 JPY	16,886	23,235,872,670 JPY
Cancellation	0	0 JPY	0	0 JPY	0	0 JPY
Early Termination	0	0 JPY	357	567,207,543 JPY	0	0 JPY
Defaulted Receivables	0	0 JPY	4	7,568,434 JPY	0	0 JPY
Matured	0	0 JPY	416	388,316,211 JPY	0	0 JPY
Refinance Option	0	0 JPY	111	161,877,177 JPY	0	0 JPY
Repurchase	0	0 JPY	0	0 JPY	0	0 JPY
Total	17,774	24,967,676,195 JPY	17,774	1,731,803,525 JPY	16,886	23,235,872,670 JPY

Pool Balance after entrustment of Additional Auto Loan Receivables

Status	Number of Contracts EoP before entrustment of Additional Auto Loan Receivables	Outstanding Discounted Principal Balance EoP before entrustment of Additional Auto Loan Receivables	Number of Contracts of Additional Auto Loan Receivables	Outstanding Discounted Principal Balance of Additional Auto Loan Receivables	Number of Contracts EoP after entrustment of Additional Auto Loan Receivables	Outstanding Discounted Principal Balance EoP after entrustment of Additional Auto Loan Receivables
Normal	16,886	23,235,872,670 JPY	0	0 JPY	16,886	23,235,872,670 JPY
Cancellation	0	0 JPY	0	0 JPY	0	0 JPY
Early Termination	0	0 JPY	0	0 JPY	0	0 JPY
Defaulted Receivables	0	0 JPY	0	0 JPY	0	0 JPY
Matured	0	0 JPY	0	0 JPY	0	0 JPY
Refinance Option	0	0 JPY	0	0 JPY	0	0 JPY
Repurchase	0	0 JPY	0	0 JPY	0	0 JPY
Total	16,886	23,235,872,670 JPY	0	0 JPY	16,886	23,235,872,670 JPY

Limits on Eligibility Criteria

Status Limits on Eligibility Criteria (v) (including Additional Entrustment)	Current Exposure in %	Limits in % of the aggregate Discounted Principal Balance of the Auto Loan Receivables outstanding	Status
(i) on Used Purchased Vehicle	24.20 %	35 %	-*
(ii) on Non-VW Vehicles	0.01 %	5 %	-*
(iii) on Balloon Payment	51.91 %	50 %	-*

(*) not applicable since the Revolving Period ended

Outstanding Balances

Monthly Period: from 2019/08/11 to 2019/09/10
Reporting Date: 2019/09/18
Trust Calculation Date: 2019/09/26

Outstanding Balances

	Number of Contracts	Aggregate Amount of the Discounted Principal Balance	Aggregate Amount of the Nominal Balance
Balance on the previous EoP	17,774	24,967,676,195 JPY	25,653,425,000 JPY
Balance after counting on the Collections during the relevant Monthly Period	16,886	23,235,872,670 JPY	23,864,450,800 JPY
Balance of Additional Auto Loan Receivables	0	0 JPY	0 JPY
Aggregate Amount of Auto Loan Receivables	16,886	23,235,872,670 JPY	23,864,450,800 JPY

Collections

	Number of Contracts	Aggregate Amount of the Discounted Principal Balance	Aggregate Amount of the Nominal Balance
Collections: Amortization of current contracts	16,886	606,834,160 JPY	650,175,300 JPY
Collections: Cancellation	0	0 JPY	0 JPY
Collections: Early Termination	357	567,207,543 JPY	567,831,619 JPY
Collections: Defaulted Receivables	4	7,568,434 JPY	7,594,299 JPY
Collections: Matured	416	388,316,211 JPY	388,833,100 JPY
Collections: Refinance Option	111	161,877,177 JPY	162,120,000 JPY
Collections: Repurchase	0	0 JPY	0 JPY
Sum	17,774	1,731,803,525 JPY	1,776,554,318 JPY

Available Distribution Amount

	Number of Contracts	Aggregate Amount of the Nominal Balance
(a) the Collections for the Monthly Period with respect to such Trust Calculation Date	17,774	1,776,554,318 JPY
(b) drawings from the Cash Collateral Ledger in accordance with Article 18.3 of the First Trust Agreement	0	0 JPY
(c) net investment earnings from Eligible Investments	0	11,555 JPY
(d) net proceeds from the sale or disposal of the Trust Assets of the First Trust	0	0 JPY
(e) any amount which is carried over from the immediately preceding Trust Calculation Date	0	0 JPY
Sum	17,774	1,776,565,873 JPY

Waterfall

There is no distinction between principal and interest, and all collections go through a single priority of payments			
		Payment	Remaining Amount
Available Distribution Amount	plus	1,776,565,873 JPY	1,776,565,873 JPY
(a) an amount necessary for the payment of all taxes and public charges to be paid to the relevant public authority by the immediately following First Trust Payment Date.	less	0 JPY	1,776,565,873 JPY
(b) an amount necessary for the payment of all Fees for the Trustee of the First Trust to be paid to the Trustee of the First Trust by the immediately following First Trust Payment Date.	less	224,708 JPY	1,776,341,165 JPY
(c) an amount necessary for the payment of the Servicing Fee to be paid to the Servicer by the immediately following First Trust Payment Date.	less	22,470,907 JPY	1,753,870,258 JPY
(d) an amount necessary for the payment of the Trust Expenses of the First Trust as provided in Article 23.1 (including the Rating Fees, Costs of the Second Trust and those fees not otherwise covered by (b) or (c) above) to be paid to the relevant party by the immediately following First Trust Payment Date (including any amounts advanced by the Trustee of the First Trust pursuant to Article 23.3)	less	240,152 JPY	1,753,630,106 JPY
(e) an amount necessary for the payment of overdue and unpaid interest on the Asset Backed Loans to the First Trust (if any) to be paid to the Trustee of the Second Trust by the immediately following First Trust Payment Date.	less	0 JPY	1,753,630,106 JPY
(f) an amount necessary for the payment to the Trustee of the Second Trust of interest on the Asset Backed Loan to the First Trust accruing during the relevant Interest Calculation Period	less	3,498,595 JPY	1,750,131,511 JPY
(g) an amount necessary to top up the balance thereof until it is equal to the Cash Collateral Ledger Target Balance	less	0 JPY	1,750,131,511 JPY
(h) (i) prior to the expiration of the Revolving Period: an amount necessary for the redemption of any Additional Senior Beneficial Interest;	less	1,532,646,120 JPY	217,485,391 JPY
(ii) following the expiration of the Revolving Period and prior to the occurrence of an Early Amortization Event, an amount necessary for the payment to the Trustee of the Second Trust of the Asset Backed Loan Principal Payment Amount for the relevant First Trust Payment Date.			
(iii) following the occurrence of the Early Amortization Event, an amount necessary for the payment to the Trustee of the Second Trust of the remaining principal balance of the Asset Backed Loan to the First Trust.			
(i) an amount necessary for the payment to the Trustee of the First Trust of any Indemnified Amounts which are not compensated by the Trustor of the First Trust	less	0 JPY	217,485,391 JPY
(j) an amount necessary for the payment to the Subordinated Beneficiary of the Subordinated Beneficial Principal Payment Amount for the relevant First Trust Payment Date.	less	199,157,405 JPY	18,327,986 JPY
(k) (i) prior to the expiration of the Revolving Period, then (x) if a transfer is made under (j) above, such remaining amount will be transferred to the Expenses Distribution Ledger for payment to the Subordinated Beneficiary as a payment of earnings on the Subordinated Beneficial Interest, and such payment shall be made on the First Trust Payment Date immediately following such Trust Calculation Date or (y) if no transfer is made under (j) above, such remaining amount will be carried forward to the next Trust Calculation Date.	less	18,327,986 JPY	0 JPY
(ii) following the expiration of the Revolving Period and prior to the occurrence of an Early Amortization Event, then such remaining amount will be transferred to the Expenses Distribution Ledger for payment to the Subordinated Beneficiary as a payment of earnings on the Subordinated Beneficial Interest, and such payment shall be made on the First Trust Payment Date immediately following such Trust Calculation Date.			
(iii) following the occurrence of an Early Amortization Event, the remaining amount in the Trust Collection Ledger will be carried forward to the next Trust Calculation Date.			

Credit Enhancement

Subordinated Principal Balance as of the relevant First Trust Payment Date

	Percentage of Aggregate Discounted Principal Balance	Value
(i) the aggregate amount of the Discounted Principal Balance of all Auto Loan Receivables outstanding		23,235,872,670 JPY
(ii) Asset Backed Loan Principal Balance on the relevant First Trust Payment Date		20,563,747,312 JPY
Overcollateralization (= (i) - (ii))	11.50 %	2,672,125,358 JPY
Trust Collection Ledger which is carried over from the immediately preceding Trust Calculation Date	0.00 %	0 JPY
The amount in the Cash Collateral Ledger	1.48 %	345,000,000 JPY
Subordinated Principal Balance	12.98 %	3,017,125,358 JPY

Trust Management Account (TMA)

	in JPY	+/-	in JPY (previous)
Initial Balance on Cash Entrustment Date	345,000,000 JPY		
Outstanding Balance on First Trust Payment Date	345,000,000 JPY	0 JPY	345,000,000 JPY
(a) Expenses Distribution Ledger	0 JPY	0 JPY	0 JPY
(b) Trust Collection Ledger	0 JPY	0 JPY	0 JPY
(c) Cash Collateral Ledger	345,000,000 JPY	0 JPY	345,000,000 JPY
Cash Collateral Ledger Target Balance	345,000,000 JPY		

Calculation of Credit Enhancement

Driver Japan six's Credit Enhancement consists of the items listed above in the Subordinated Principal Balance as of the relevant date of determination (immediately following the First Trust Payment Date). The result provides an absolute value, which will be applied to the (amortized) Aggregate Discounted Principal Balance as of the end of the relevant date.

The transaction has a Revolving Period of 12 months until February 2018.

Asset Backed Loan Overcollateralization Percentage is (i) prior to the expiration of the Revolving Period, 8.5%, and (ii) following the expiration of the Revolving Period, 11.5%; provided, in each case no Credit Enhancement Increase Condition shall be in effect. After a Level 1 Credit Enhancement Increase Condition in effect, 17% and after a Level 2 Credit Enhancement Increase Condition is in effect, 100%.

Cumulative Gross Loss & Cumulative Repurchased Receivables

Cumulative Defaulted Receivables

	Number of Contracts	Write Offs
Beginning of Period	146	291,511,260 JPY
Defaulted Receivables	4	7,568,434 JPY
End of Period	150	299,079,694 JPY

Cumulative Gross Loss Ratio

The sum of the Discounted Principal Balance of all Auto Loan Receivables that have become Defaulted Receivables from the Initial Cut-off Date through to the end of Monthly Period immediately preceding the relevant Trust Calculation Date

299,079,694 JPY 0.33 %

The sum of (i) the aggregate Discounted Principal Balance of the Initial Auto Loan Receivables as of the Initial Cut-off Date and (ii) the aggregate Discounted Principal Balance as of the relevant Trust Calculation Date of all Additional Auto Loan Receivables (if any) entrusted on the Additional Entrustment Dates which fall six months prior to the relevant Trust Calculation Date.

90,684,064,608 JPY

Performance Triggers

Asset Backed Loan Overcollateralization Percentage was implemented to assure on a monthly basis that no cash is paid to lower steps in the waterfall unless there is sufficient Overcollateralization to support the transaction.

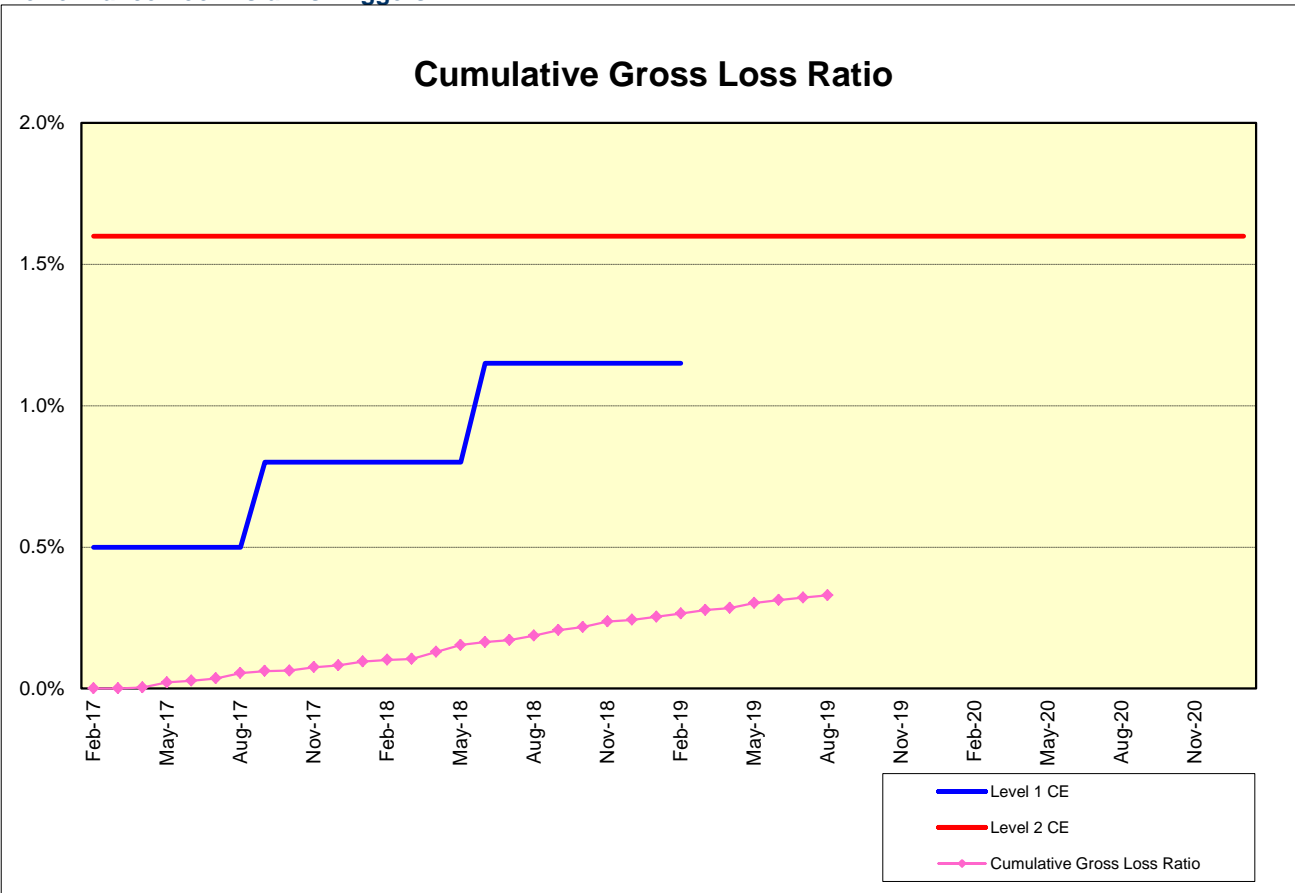
The performance trigger in form of a Credit Enhancement Increase Condition will be activated when the Cumulative Gross Loss Ratio exceeds the defined limits. In this case the Overcollateralization will be increased accordingly.

Levels	Credit Enhancement increase condition	Credit Enhancement increase condition in place?
Level 1 (i)	Cumulative Gross Loss Ratio exceeds 0.5% for any First Trust Payment Date on or prior to August 2017	no
Level 1 (ii)	Cumulative Gross Loss Ratio exceeds 0.8% for any First Trust Payment Date from September 2017 to May 2018	no
Level 1 (iii)	Cumulative Gross Loss Ratio exceeds 1.15% for any First Trust Payment Date from June 2018 to February 2019	no
Level 2	Cumulative Gross Loss Ratio exceeds 1.6% for any First Trust Payment Date	no

	Asset Backed Loan Overcollateralization Percentage
Prior to the expiration of the Revolving Period (No Credit Enhancement Increase Condition is in effect)	8.50 %
Following the expiration of Revolving Period (No Credit Enhancement Increase Condition is in effect)	11.50 %
After a Level 1 Credit Enhancement Increase Condition is in effect	17.00 %
After a Level 2 Credit Enhancement Increase Condition is in effect	100.00 %
Current Asset Backed Loan Overcollateralization Percentage	11.50 %

Cumulative Gross Loss & Cumulative Repurchased Receivables

Performance Pool vis-a-vis Triggers



Cumulative Repurchased Receivables

	Number of Contracts	Repurchase Price
Beginning of Period	0	0 JPY
Repurchased Receivables	0	0 JPY
End of Period	0	0 JPY

Defaulted and Delinquent Contracts

Information of Delinquencies and Defaults

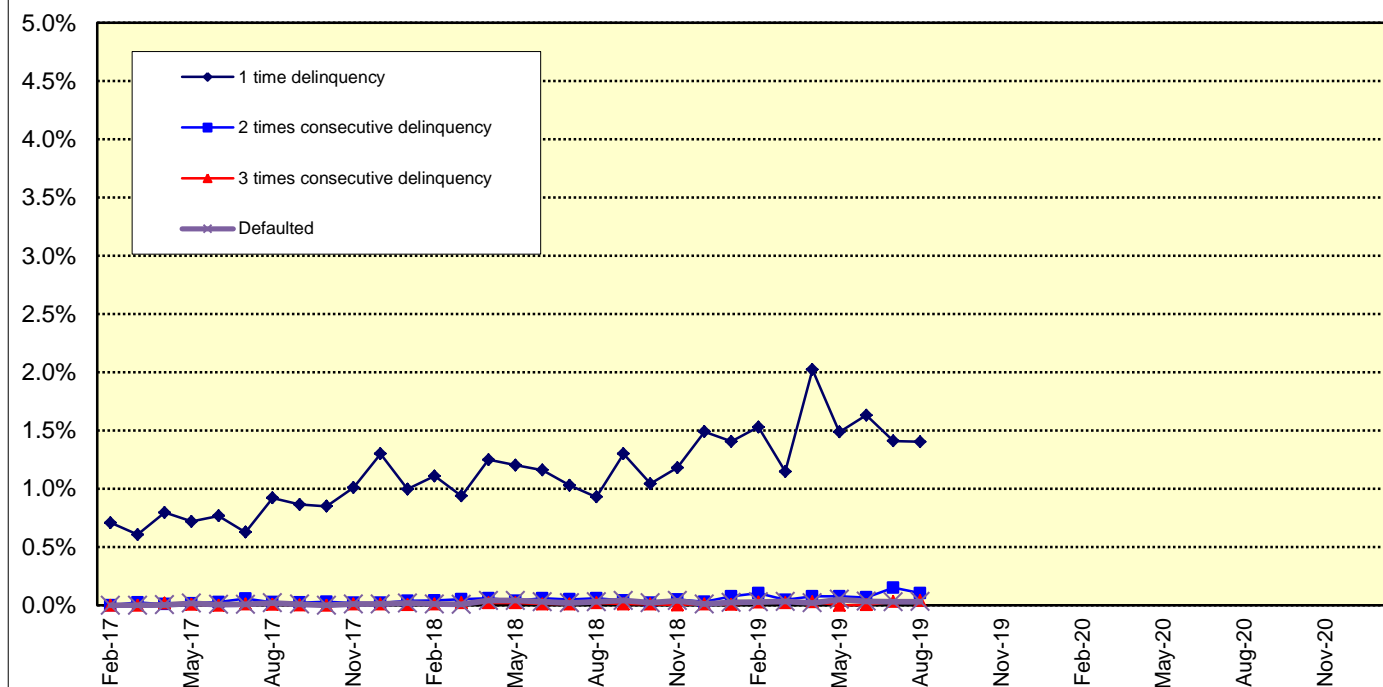
Current Reporting Period	Number of Contracts	Percentage of Contracts (*)	Outstanding Discounted Principal Balance	Percentage of Principal Balance (*)	Outstanding Nominal Balance	Percentage of Nominal Balance (*)
Delinquent	230	1.29 %	359,339,301 JPY	1.44 %	371,260,400 JPY	1.45 %
Default	4	0.02 %	7,568,434 JPY	0.03 %	7,594,299 JPY	0.03 %

(*) Based on the previous EoP

Delinquency Profile (Information Purpose Only)

Days in Arrears	Number of Contracts	Percentage of Contracts	Outstanding Discounted Principal Balance	Percentage of Principal Balance	Outstanding Nominal Balance	Percentage of Nominal Balance
1	209	1.24 %	326,049,332 JPY	1.40 %	336,791,200 JPY	1.41 %
2	16	0.09 %	24,115,899 JPY	0.10 %	24,951,900 JPY	0.10 %
3	5	0.03 %	9,174,070 JPY	0.04 %	9,517,300 JPY	0.04 %
Total	230	1.36 %	359,339,301 JPY	1.55 %	371,260,400 JPY	1.56 %

Delinquent / Defaulted (Gross Loss) Ratio



Run Out Schedule

ROS on the previous EoP on 2019/08/10

Next Payment Month	Number of Contracts	ABS Outstanding Principal	ABS Outstanding Interest	Outstanding Installment	ABS Remaining Principal	ABS Remaining Interest	ABS Remaining Installment
07.2019	17,774	24,967,676,195 JPY	685,748,805 JPY	25,653,425,000 JPY	0 JPY	0 JPY	0 JPY
08.2019	17,774	23,796,221,811 JPY	640,654,689 JPY	24,436,876,500 JPY	1,171,454,384 JPY	45,094,116 JPY	1,216,548,500 JPY
09.2019	17,247	22,398,007,339 JPY	597,490,361 JPY	22,995,497,700 JPY	1,398,214,472 JPY	43,164,328 JPY	1,441,378,800 JPY
10.2019	16,481	21,332,054,521 JPY	556,527,579 JPY	21,888,582,100 JPY	1,065,952,818 JPY	40,962,782 JPY	1,106,915,600 JPY
11.2019	15,957	19,953,799,990 JPY	517,311,710 JPY	20,471,111,700 JPY	1,378,254,531 JPY	39,215,869 JPY	1,417,470,400 JPY
12.2019	15,236	18,596,782,622 JPY	480,204,878 JPY	19,076,987,500 JPY	1,357,017,368 JPY	37,106,832 JPY	1,394,124,200 JPY
01.2020	14,826	17,679,322,744 JPY	445,483,656 JPY	18,124,806,400 JPY	917,459,878 JPY	34,721,222 JPY	952,181,100 JPY
02.2020	14,487	16,835,018,365 JPY	412,380,535 JPY	17,247,398,900 JPY	844,304,379 JPY	33,103,121 JPY	877,407,500 JPY
03.2020	14,000	15,796,015,340 JPY	380,752,060 JPY	16,176,767,400 JPY	1,039,003,025 JPY	31,628,475 JPY	1,070,631,500 JPY
04.2020	13,341	15,158,567,822 JPY	350,820,878 JPY	15,509,388,700 JPY	637,447,518 JPY	29,931,182 JPY	667,378,700 JPY
05.2020	13,116	14,474,255,616 JPY	322,034,584 JPY	14,796,290,200 JPY	684,312,206 JPY	28,786,294 JPY	713,098,500 JPY
06.2020	12,782	13,576,261,511 JPY	294,454,589 JPY	13,870,716,100 JPY	897,994,105 JPY	27,579,995 JPY	925,574,100 JPY
07.2020	12,415	12,772,222,218 JPY	268,517,082 JPY	13,040,739,300 JPY	804,039,293 JPY	25,937,507 JPY	829,976,800 JPY
08.2020	12,141	12,094,842,094 JPY	244,125,906 JPY	12,338,968,000 JPY	677,380,124 JPY	24,391,176 JPY	701,771,300 JPY
09.2020	11,802	11,491,644,594 JPY	220,973,906 JPY	11,712,618,500 JPY	603,197,500 JPY	23,152,000 JPY	626,349,500 JPY
10.2020	11,426	11,002,889,080 JPY	198,947,120 JPY	11,201,836,200 JPY	488,755,514 JPY	22,026,786 JPY	510,782,300 JPY
11.2020	11,196	10,527,328,025 JPY	177,886,975 JPY	10,705,215,000 JPY	475,561,055 JPY	21,060,145 JPY	496,621,200 JPY
12.2020	10,939	9,712,274,323 JPY	157,759,677 JPY	9,870,034,000 JPY	815,053,702 JPY	20,127,298 JPY	835,181,000 JPY
01.2021	10,632	9,074,636,404 JPY	139,254,996 JPY	9,213,891,400 JPY	637,637,919 JPY	18,504,681 JPY	656,142,600 JPY
02.2021	10,219	8,395,934,585 JPY	121,952,515 JPY	8,517,887,100 JPY	678,701,819 JPY	17,302,481 JPY	696,004,300 JPY
03.2021	9,597	7,610,441,461 JPY	105,923,239 JPY	7,716,364,700 JPY	785,493,124 JPY	16,029,276 JPY	801,522,400 JPY
04.2021	8,709	7,120,158,934 JPY	91,349,866 JPY	7,211,508,800 JPY	490,282,527 JPY	14,573,373 JPY	504,855,900 JPY
05.2021	8,266	6,566,762,214 JPY	77,751,986 JPY	6,644,514,200 JPY	553,396,720 JPY	13,597,880 JPY	566,994,600 JPY
06.2021	7,651	5,901,217,363 JPY	65,231,537 JPY	5,966,448,900 JPY	665,544,851 JPY	12,520,449 JPY	678,065,300 JPY
07.2021	7,021	5,155,757,993 JPY	54,040,507 JPY	5,209,798,500 JPY	745,459,370 JPY	11,191,030 JPY	756,650,400 JPY
08.2021	6,351	4,487,198,222 JPY	44,279,178 JPY	4,531,477,400 JPY	668,559,771 JPY	9,761,329 JPY	678,321,100 JPY
09.2021	5,588	3,598,537,894 JPY	35,733,606 JPY	3,634,271,500 JPY	888,660,328 JPY	8,545,572 JPY	897,205,900 JPY
10.2021	4,511	3,038,638,308 JPY	28,846,192 JPY	3,067,484,500 JPY	559,899,586 JPY	6,887,414 JPY	566,787,000 JPY
11.2021	3,864	2,325,126,730 JPY	22,993,770 JPY	2,348,120,500 JPY	713,511,578 JPY	5,852,422 JPY	719,364,000 JPY
12.2021	2,977	1,933,579,199 JPY	18,437,101 JPY	1,952,016,300 JPY	391,547,531 JPY	4,556,669 JPY	396,104,200 JPY
01.2022	2,662	1,660,611,717 JPY	14,639,183 JPY	1,675,250,900 JPY	272,967,482 JPY	3,797,918 JPY	276,765,400 JPY
02.2022	2,396	1,379,675,212 JPY	11,377,888 JPY	1,391,053,100 JPY	280,936,505 JPY	3,261,295 JPY	284,197,800 JPY
03.2022	2,075	990,168,715 JPY	8,658,785 JPY	998,827,500 JPY	389,506,497 JPY	2,719,103 JPY	392,225,600 JPY
04.2022	1,542	820,419,781 JPY	6,639,419 JPY	827,059,200 JPY	169,748,934 JPY	2,019,366 JPY	171,768,300 JPY
05.2022	1,319	642,869,185 JPY	4,947,115 JPY	647,816,300 JPY	177,550,596 JPY	1,692,304 JPY	179,242,900 JPY
06.2022	1,060	457,768,418 JPY	3,581,082 JPY	461,349,500 JPY	185,100,767 JPY	1,366,033 JPY	186,466,800 JPY
07.2022	797	331,567,424 JPY	2,570,976 JPY	334,138,400 JPY	126,200,994 JPY	1,010,106 JPY	127,211,100 JPY
08.2022	638	241,576,302 JPY	1,821,198 JPY	243,397,500 JPY	89,991,122 JPY	749,778 JPY	90,740,900 JPY
09.2022	457	137,846,938 JPY	1,257,562 JPY	139,104,500 JPY	103,729,364 JPY	563,636 JPY	104,293,000 JPY
10.2022	294	74,013,709 JPY	910,591 JPY	74,924,300 JPY	63,833,229 JPY	346,971 JPY	64,180,200 JPY
11.2022	198	44,762,835 JPY	712,265 JPY	45,475,100 JPY	29,250,874 JPY	198,326 JPY	29,449,200 JPY
12.2022	148	34,625,032 JPY	579,568 JPY	35,204,600 JPY	10,137,803 JPY	132,697 JPY	10,270,500 JPY
01.2023	127	28,201,569 JPY	476,331 JPY	28,677,900 JPY	6,423,463 JPY	103,237 JPY	6,526,700 JPY
02.2023	114	23,766,485 JPY	391,615 JPY	24,158,100 JPY	4,435,084 JPY	84,716 JPY	4,519,800 JPY
03.2023	98	19,937,471 JPY	319,729 JPY	20,257,200 JPY	3,829,014 JPY	71,886 JPY	3,900,900 JPY
04.2023	79	16,767,797 JPY	259,003 JPY	17,026,800 JPY	3,169,674 JPY	60,726 JPY	3,230,400 JPY
05.2023	71	13,871,899 JPY	207,701 JPY	14,079,600 JPY	2,895,898 JPY	51,302 JPY	2,947,200 JPY
06.2023	54	10,942,668 JPY	165,032 JPY	11,107,700 JPY	2,929,231 JPY	42,669 JPY	2,971,900 JPY
07.2023	41	8,231,255 JPY	130,845 JPY	8,362,100 JPY	2,711,413 JPY	34,187 JPY	2,745,600 JPY
08.2023	36	6,374,556 JPY	104,944 JPY	6,479,500 JPY	1,856,699 JPY	25,901 JPY	1,882,600 JPY
09.2023	29	5,188,896 JPY	84,804 JPY	5,273,700 JPY	1,185,660 JPY	20,140 JPY	1,205,800 JPY
10.2023	21	4,300,381 JPY	68,319 JPY	4,368,700 JPY	888,515 JPY	16,485 JPY	905,000 JPY
11.2023	11	3,839,479 JPY	54,621 JPY	3,894,100 JPY	460,902 JPY	13,698 JPY	474,600 JPY
12.2023	10	2,815,308 JPY	42,392 JPY	2,857,700 JPY	1,024,171 JPY	12,229 JPY	1,036,400 JPY
01.2024	9	2,287,675 JPY	33,425 JPY	2,321,100 JPY	527,633 JPY	8,967 JPY	536,600 JPY
02.2024	8	1,952,261 JPY	26,139 JPY	1,978,400 JPY	335,414 JPY	7,286 JPY	342,700 JPY
03.2024	7	1,670,980 JPY	19,920 JPY	1,690,900 JPY	281,281 JPY	6,219 JPY	287,500 JPY
04.2024	6	1,442,602 JPY	14,598 JPY	1,457,200 JPY	228,378 JPY	5,322 JPY	233,700 JPY
05.2024	5	1,264,097 JPY	10,003 JPY	1,274,100 JPY	178,505 JPY	4,595 JPY	183,100 JPY
06.2024	5	1,085,024 JPY	5,976 JPY	1,091,000 JPY	179,073 JPY	4,027 JPY	183,100 JPY
07.2024	5	415,380 JPY	2,520 JPY	417,900 JPY	669,644 JPY	3,456 JPY	673,100 JPY
08.2024	4	263,803 JPY	1,197 JPY	265,000 JPY	151,577 JPY	1,323 JPY	152,900 JPY
09.2024	4	111,744 JPY	356 JPY	112,100 JPY	152,059 JPY	841 JPY	152,900 JPY
10.2024	3	0 JPY	0 JPY	0 JPY	111,744 JPY	356 JPY	112,100 JPY

Run Out Schedule

ROS on the relevant EoP on 2019/09/10

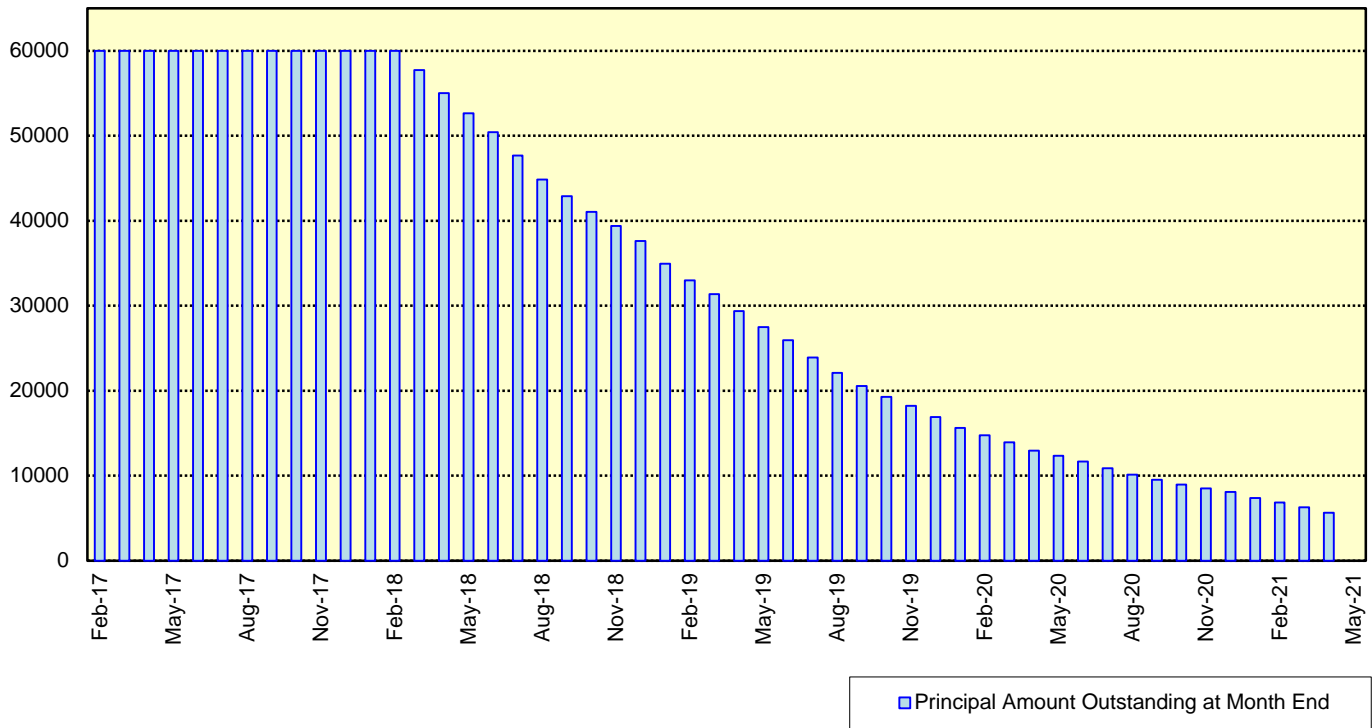
Next Payment Month	Number of Contracts	ABS Outstanding Principal	ABS Outstanding Interest	Outstanding Installment	ABS Remaining Principal	ABS Remaining Interest	ABS Remaining Installment
08.2019	16,886	23,235,872,670 JPY	628,578,130 JPY	23,864,450,800 JPY	0 JPY	0 JPY	0 JPY
09.2019	16,886	21,939,871,584 JPY	586,381,316 JPY	22,526,252,900 JPY	1,296,001,086 JPY	42,196,814 JPY	1,338,197,900 JPY
10.2019	16,178	20,911,640,210 JPY	546,238,090 JPY	21,457,878,300 JPY	1,028,231,374 JPY	40,143,226 JPY	1,068,374,600 JPY
11.2019	15,668	19,586,982,137 JPY	507,779,663 JPY	20,094,761,800 JPY	1,324,658,073 JPY	38,458,427 JPY	1,363,116,500 JPY
12.2019	14,975	18,258,550,527 JPY	471,358,673 JPY	18,729,909,200 JPY	1,328,431,610 JPY	36,420,990 JPY	1,364,852,600 JPY
01.2020	14,575	17,364,114,036 JPY	437,277,064 JPY	17,801,391,100 JPY	894,436,491 JPY	34,081,609 JPY	928,518,100 JPY
02.2020	14,244	16,531,055,185 JPY	404,776,315 JPY	16,935,831,500 JPY	833,058,851 JPY	32,500,749 JPY	865,559,600 JPY
03.2020	13,761	15,512,692,525 JPY	373,730,475 JPY	15,886,423,000 JPY	1,018,362,660 JPY	31,045,840 JPY	1,049,408,500 JPY
04.2020	13,113	14,885,169,761 JPY	344,349,439 JPY	15,229,519,200 JPY	627,522,764 JPY	29,381,036 JPY	656,903,800 JPY
05.2020	12,891	14,215,518,805 JPY	316,095,595 JPY	14,531,614,400 JPY	669,650,956 JPY	28,253,844 JPY	697,904,800 JPY
06.2020	12,565	13,334,256,407 JPY	289,020,293 JPY	13,623,276,700 JPY	881,262,398 JPY	27,075,302 JPY	908,337,700 JPY
07.2020	12,212	12,542,055,859 JPY	263,556,341 JPY	12,805,612,200 JPY	792,200,548 JPY	25,463,952 JPY	817,664,500 JPY
08.2020	11,942	11,874,970,715 JPY	239,614,985 JPY	12,114,585,700 JPY	667,085,144 JPY	23,941,356 JPY	691,026,500 JPY
09.2020	11,608	11,286,673,792 JPY	216,892,208 JPY	11,503,566,000 JPY	588,296,923 JPY	22,722,777 JPY	611,019,700 JPY
10.2020	11,243	10,803,946,426 JPY	195,266,774 JPY	10,999,213,200 JPY	482,727,366 JPY	21,625,434 JPY	504,352,800 JPY
11.2020	11,013	10,337,022,278 JPY	174,595,922 JPY	10,511,618,200 JPY	466,924,148 JPY	20,670,852 JPY	487,595,000 JPY
12.2020	10,760	9,535,507,235 JPY	154,841,265 JPY	9,690,348,500 JPY	801,515,043 JPY	19,754,657 JPY	821,269,700 JPY
01.2021	10,459	8,910,226,067 JPY	136,683,033 JPY	9,046,909,100 JPY	625,281,168 JPY	18,158,232 JPY	643,439,400 JPY
02.2021	10,052	8,241,488,735 JPY	119,702,065 JPY	8,361,190,800 JPY	668,737,332 JPY	16,980,968 JPY	685,718,300 JPY
03.2021	9,436	7,465,740,041 JPY	103,975,759 JPY	7,569,715,800 JPY	775,748,694 JPY	15,726,306 JPY	791,475,000 JPY
04.2021	8,558	6,987,673,449 JPY	89,686,551 JPY	7,077,360,000 JPY	848,066,592 JPY	14,289,208 JPY	492,355,800 JPY
05.2021	8,123	6,440,916,988 JPY	76,345,412 JPY	6,517,262,400 JPY	546,756,461 JPY	13,341,139 JPY	560,097,600 JPY
06.2021	7,512	5,786,981,673 JPY	64,069,027 JPY	5,851,050,700 JPY	653,935,315 JPY	12,276,385 JPY	666,211,700 JPY
07.2021	6,891	5,062,547,659 JPY	53,097,441 JPY	5,115,645,100 JPY	724,434,014 JPY	10,971,586 JPY	735,405,600 JPY
08.2021	6,242	4,411,172,699 JPY	43,517,001 JPY	4,454,689,700 JPY	651,374,960 JPY	9,580,440 JPY	660,955,400 JPY
09.2021	5,497	3,543,409,768 JPY	35,114,832 JPY	3,578,524,600 JPY	867,762,931 JPY	8,402,169 JPY	476,355,100 JPY
10.2021	4,447	2,990,033,773 JPY	28,334,727 JPY	3,018,368,500 JPY	553,375,995 JPY	6,780,105 JPY	560,156,100 JPY
11.2021	3,807	2,293,525,395 JPY	22,576,605 JPY	2,316,102,000 JPY	696,508,378 JPY	5,758,122 JPY	702,266,500 JPY
12.2021	2,940	1,907,535,968 JPY	18,083,832 JPY	1,925,619,800 JPY	385,989,427 JPY	4,492,773 JPY	390,482,200 JPY
01.2022	2,629	1,637,972,725 JPY	14,340,975 JPY	1,652,313,700 JPY	269,563,243 JPY	3,742,857 JPY	273,306,100 JPY
02.2022	2,367	1,358,171,295 JPY	11,128,105 JPY	1,369,299,400 JPY	279,801,430 JPY	3,212,870 JPY	283,014,300 JPY
03.2022	2,047	972,499,811 JPY	8,455,089 JPY	980,954,900 JPY	385,671,484 JPY	2,673,016 JPY	388,344,500 JPY
04.2022	1,518	806,534,728 JPY	6,475,372 JPY	813,010,100 JPY	165,965,083 JPY	1,979,717 JPY	167,944,800 JPY
05.2022	1,300	631,195,656 JPY	4,815,144 JPY	636,010,800 JPY	175,339,072 JPY	1,660,228 JPY	176,999,300 JPY
06.2022	1,043	450,494,567 JPY	3,476,933 JPY	453,971,500 JPY	180,701,089 JPY	1,338,211 JPY	182,039,300 JPY
07.2022	787	325,942,774 JPY	2,485,926 JPY	328,428,700 JPY	124,551,793 JPY	991,007 JPY	125,542,800 JPY
08.2022	631	236,685,614 JPY	1,750,986 JPY	238,436,600 JPY	89,257,160 JPY	734,940 JPY	89,992,100 JPY
09.2022	451	134,239,263 JPY	1,200,437 JPY	135,439,700 JPY	102,446,351 JPY	550,549 JPY	102,996,900 JPY
10.2022	289	70,711,545 JPY	864,055 JPY	71,575,600 JPY	63,527,718 JPY	336,382 JPY	63,864,100 JPY
11.2022	193	42,204,177 JPY	675,423 JPY	42,879,600 JPY	28,507,368 JPY	188,632 JPY	28,696,000 JPY
12.2022	144	32,361,851 JPY	550,449 JPY	32,912,300 JPY	9,842,326 JPY	124,974 JPY	9,967,300 JPY
01.2023	123	26,474,735 JPY	454,065 JPY	26,928,800 JPY	5,887,116 JPY	96,384 JPY	5,983,500 JPY
02.2023	110	22,337,636 JPY	374,564 JPY	22,712,200 JPY	4,137,099 JPY	79,501 JPY	4,216,600 JPY
03.2023	95	18,754,785 JPY	307,015 JPY	19,061,800 JPY	3,582,851 JPY	67,549 JPY	3,650,400 JPY
04.2023	76	15,831,987 JPY	249,913 JPY	16,081,900 JPY	2,922,798 JPY	57,102 JPY	2,979,900 JPY
05.2023	68	13,183,680 JPY	201,520 JPY	13,385,200 JPY	2,648,307 JPY	48,393 JPY	2,696,700 JPY
06.2023	52	10,404,056 JPY	161,044 JPY	10,565,100 JPY	2,779,624 JPY	40,476 JPY	2,820,100 JPY
07.2023	39	7,842,728 JPY	128,572 JPY	7,971,300 JPY	2,561,328 JPY	32,472 JPY	2,593,800 JPY
08.2023	34	6,136,591 JPY	103,909 JPY	6,240,500 JPY	1,706,137 JPY	24,663 JPY	1,730,800 JPY
09.2023	27	5,101,973 JPY	84,527 JPY	5,186,500 JPY	1,034,618 JPY	19,382 JPY	1,054,000 JPY
10.2023	20	4,300,381 JPY	68,319 JPY	4,368,700 JPY	801,592 JPY	16,208 JPY	817,800 JPY
11.2023	11	3,839,479 JPY	54,621 JPY	3,894,100 JPY	460,902 JPY	13,698 JPY	474,600 JPY
12.2023	10	2,815,308 JPY	42,392 JPY	2,857,700 JPY	1,024,171 JPY	12,229 JPY	1,036,400 JPY
01.2024	9	2,287,675 JPY	33,425 JPY	2,321,100 JPY	527,633 JPY	8,967 JPY	536,600 JPY
02.2024	8	1,952,261 JPY	26,139 JPY	1,978,400 JPY	335,414 JPY	7,286 JPY	342,700 JPY
03.2024	7	1,670,980 JPY	19,920 JPY	1,690,900 JPY	281,281 JPY	6,219 JPY	287,500 JPY
04.2024	6	1,442,602 JPY	14,598 JPY	1,457,200 JPY	228,378 JPY	5,322 JPY	233,700 JPY
05.2024	5	1,264,097 JPY	10,003 JPY	1,274,100 JPY	178,505 JPY	4,595 JPY	183,100 JPY
06.2024	5	1,085,024 JPY	5,976 JPY	1,091,000 JPY	179,073 JPY	4,027 JPY	183,100 JPY
07.2024	5	415,380 JPY	2,520 JPY	417,900 JPY	669,644 JPY	3,456 JPY	673,100 JPY
08.2024	4	263,803 JPY	1,197 JPY	265,000 JPY	151,577 JPY	1,323 JPY	152,900 JPY
09.2024	4	111,744 JPY	356 JPY	112,100 JPY	152,059 JPY	841 JPY	152,900 JPY
10.2024	3	0 JPY	0 JPY	0 JPY	111,744 JPY	356 JPY	112,100 JPY

Expected Amortisation

Expected Amortization to the Second Trust

JPY mil.

Assuming a Clean-Up Call at 10% of the Initial Outstanding Balance, annual prepayments of 10% and 0% defaults.



Distribution by Sub-Servicer

Sub-Servicer	Number of Loans	Percentage of Loans	Outstanding Principal Balance	Percentage of Balance
Cedyna	9,707	57.49 %	13,566,524,501 JPY	58.39 %
Jaccs	7,179	42.51 %	9,669,348,169 JPY	41.61 %
Total	16,886	100.00 %	23,235,872,670 JPY	100.00 %

Distribution by Brand

Make	Number of Loans	Percentage of Loans	Outstanding Discounted Principal Balance	Percentage of Balance
VW	11,775	69.73 %	14,500,996,820 JPY	62.41 %
Audi	5,100	30.20 %	8,708,700,374 JPY	37.48 %
Bentley	5	0.03 %	22,948,564 JPY	0.10 %
Lamborghini	0	0.00 %	0 JPY	0.00 %
Other	6	0.04 %	3,226,912 JPY	0.01 %
Total	16,886	100.00 %	23,235,872,670 JPY	100.00 %

Distribution by New and Used
Distribution by New and Used

New or Used	Number of Loans	Percentage of Loans	Outstanding Discounted Principal Balance	Percentage of Balance
New	10,896	64.53 %	17,613,582,254 JPY	75.80 %
Used	5,534	32.77 %	5,473,564,109 JPY	23.56 %
Used (Prolonged)	456	2.70 %	148,726,307 JPY	0.64 %
Total	16,886	100.00 %	23,235,872,670 JPY	100.00 %

Distribution by Brand New and Used

New or Used	Number of Loans	Percentage of Loans	Outstanding Discounted Principal Balance	Percentage of Balance
VW New	8,432	49.93 %	12,069,220,658 JPY	51.94 %
VW Used	3,043	18.02 %	2,366,706,952 JPY	10.19 %
VW Used (Prolonged)	300	1.78 %	65,069,210 JPY	0.28 %
Audi New	2,461	14.57 %	5,533,738,949 JPY	23.82 %
Audi Used	2,483	14.70 %	3,091,304,328 JPY	13.30 %
Audi Used (Prolonged)	156	0.92 %	83,657,097 JPY	0.36 %
Other	11	0.07 %	26,175,476 JPY	0.11 %
Total	16,886	100.00 %	23,235,872,670 JPY	100.00 %

Distribution by Product Type

Loan Type List

Loan Type	Description
100	Volkswagen Owner's Plan
100	Audi Owner's Plan
100	Lamborghini Auto Loan
100	Bentley Auto Loan
101	Twin Loan
105	Refinanced Volkswagen Solutions
106	Refinanced Volkswagen Das Welt Auto with refinance option *
106	Refinanced Audi S-Loan/ S-Loan Plus
106	Refinanced Lamborghini Hyper Premium Plan
106	Refinanced Bentley My Flying B
140	Volkswagen Solutions
150	Volkswagen Das Welt Auto with refinance option **
150	Audi S-Loan
150	Lamborghini Hyper Premium Plan
150	Bentley My Flying B
151	Audi S-Loan Plus

(*) The name was changed from "Refinanced Volkswagen GUC with refinance option" effective from 1 February 2012.

No other changes were made to auto loan agreements.

(**) The name was changed from "Volkswagen GUC with refinance option" effective from 1 February 2012.

No other changes were made to auto loan agreements.

Product Type

Loan Type	Number of Loans	Percentage of Loans	Outstanding Discounted Principal Balance	Percentage of Balance
100	2,599	15.39 %	2,169,419,666 JPY	9.34 %
101	0	0.00 %	0 JPY	0.00 %
105	298	1.76 %	64,458,424 JPY	0.28 %
106	158	0.94 %	84,267,883 JPY	0.36 %
140-VFJ	1,230	7.28 %	1,792,818,869 JPY	7.72 %
140-Dealer	6,624	39.23 %	9,753,015,102 JPY	41.97 %
150	5,812	34.42 %	9,044,234,810 JPY	38.92 %
151	165	0.98 %	327,657,916 JPY	1.41 %
Total	16,886	100.00 %	23,235,872,670 JPY	100.00 %

Credit Type

Credit Type	Number of Loans	Percentage of Loans	Outstanding Discounted Principal Balance	Percentage of Balance
Balloon Type Loan	13,831	81.91 %	20,917,726,697 JPY	90.02 %
Equal Instalment Type Loan	3,055	18.09 %	2,318,145,973 JPY	9.98 %
Total	16,886	100.00 %	23,235,872,670 JPY	100.00 %

Distribution by RV

Loan Type	Number of Loans	Percentage of Balance	Outstanding Discounted Principal Balance
100/101/105/106	3,055	9.98 %	2,318,145,973 JPY
140-VFJ (excl. balloon)		3.59 %	833,851,615 JPY
140-VFJ (balloon)		4.13 %	958,967,254 JPY
140-VFJ	1,230	7.72 %	1,792,818,869 JPY
140-Dealer (excl. balloon)		19.51 %	4,532,547,536 JPY
140-Dealer (balloon)		22.47 %	5,220,467,566 JPY
140-Dealer	6,624	41.97 %	9,753,015,102 JPY
150 (excl. balloon)		14.83 %	3,445,152,921 JPY
150 (balloon)		24.10 %	5,599,081,889 JPY
150	5,812	38.92 %	9,044,234,810 JPY
151 (excl. balloon)		0.19 %	44,725,822 JPY
151 (balloon)		1.22 %	282,932,094 JPY
151	165	1.41 %	327,657,916 JPY
Total	16,886	100.00 %	23,235,872,670 JPY

Type of Payment Portion	Percentage of Balance	Outstanding Discounted Principal Balance
Monthly Installment Portion	48.09 %	11,174,423,867 JPY
Balloon Portion	51.91 %	12,061,448,803 JPY
Total	100.00 %	23,235,872,670 JPY

Distribution by Brand New and Used
Audi

New or Used	Number of Loans	Percentage of Loans	Outstanding Discounted Principal Balance	Percentage of Balance
New	2,461	48.25 %	5,533,738,949 JPY	63.54 %
Used	2,639	51.75 %	3,174,961,425 JPY	36.46 %
Total	5,100	100.00 %	8,708,700,374 JPY	100.00 %

Bentley

New or Used	Number of Loans	Percentage of Loans	Outstanding Discounted Principal Balance	Percentage of Balance
New	3	60.00 %	10,622,647 JPY	46.29 %
Used	2	40.00 %	12,325,917 JPY	53.71 %
Total	5	100.00 %	22,948,564 JPY	100.00 %

Lamborghini

New or Used	Number of Loans	Percentage of Loans	Outstanding Discounted Principal Balance	Percentage of Balance
New	0	0.00 %	0 JPY	0.00 %
Used	0	0.00 %	0 JPY	0.00 %
Total	0	0.00 %	0 JPY	0.00 %

VW

New or Used	Number of Loans	Percentage of Loans	Outstanding Discounted Principal Balance	Percentage of Balance
New	8,432	71.61 %	12,069,220,658 JPY	83.23 %
Used	3,343	28.39 %	2,431,776,162 JPY	16.77 %
Total	11,775	100.00 %	14,500,996,820 JPY	100.00 %

OTHER

New or Used	Number of Loans	Percentage of Loans	Outstanding Discounted Principal Balance	Percentage of Balance
New	0	0.00 %	0 JPY	0.00 %
Used	6	100.00 %	3,226,912 JPY	100.00 %
Total	6	100.00 %	3,226,912 JPY	100.00 %

Distribution by Customer Type

Customer Type

Customer Type	Number of Loans	Percentage of Loans	Outstanding Discounted Principal Balance	Percentage of Balance
Retail	15,407	91.24 %	20,457,350,455 JPY	88.04 %
Corporate	1,479	8.76 %	2,778,522,215 JPY	11.96 %
Total	16,886	100.00 %	23,235,872,670 JPY	100.00 %

Distribution by Outstanding Discounted Principal Balance

Outstanding Discounted Principal Balance	Number of Loans	Percentage of Loans	Outstanding Discounted Principal Balance	Percentage of Balance
<= 500,000 JPY	2,110	12.50 %	582,190,172 JPY	2.51 %
500,001 JPY - 1,000,000 JPY	3,710	21.97 %	2,837,331,029 JPY	12.21 %
1,000,001 JPY - 1,500,000 JPY	4,815	28.51 %	5,997,878,643 JPY	25.81 %
1,500,001 JPY - 2,000,000 JPY	3,320	19.66 %	5,722,664,678 JPY	24.63 %
2,000,001 JPY - 2,500,000 JPY	1,456	8.62 %	3,212,340,519 JPY	13.82 %
2,500,001 JPY - 3,000,000 JPY	654	3.87 %	1,777,898,111 JPY	7.65 %
3,000,001 JPY - 3,500,000 JPY	376	2.23 %	1,214,605,546 JPY	5.23 %
3,500,001 JPY - 4,000,000 JPY	212	1.26 %	787,642,294 JPY	3.39 %
4,000,001 JPY - 4,500,000 JPY	111	0.66 %	468,097,080 JPY	2.01 %
4,500,001 JPY - 5,000,000 JPY	66	0.39 %	313,236,938 JPY	1.35 %
5,000,001 JPY - 6,000,000 JPY	41	0.24 %	222,629,008 JPY	0.96 %
6,000,001 JPY - 7,000,000 JPY	11	0.07 %	68,690,510 JPY	0.30 %
7,000,001 JPY - 8,000,000 JPY	3	0.02 %	22,438,506 JPY	0.10 %
8,000,001 JPY - 9,000,000 JPY	1	0.01 %	8,229,636 JPY	0.04 %
9,000,001 JPY - 10,000,000 JPY	0	0.00 %	0 JPY	0.00 %
>= 10,000,001 JPY	0	0.00 %	0 JPY	0.00 %
Total	16,886	100.00 %	23,235,872,670 JPY	100.00 %

Statistics

Minimum Outstanding Discounted Principal Balance	9,075 JPY
Maximum Outstanding Discounted Principal Balance	8,229,636 JPY
Average Outstanding Discounted Principal Balance	1,376,044 JPY

Distribution by Original Principal Amount

Original Principal Balance	Number of Loans	Percentage of Loans	Outstanding Discounted Principal Balance	Percentage of Balance
<= 500,000 JPY	59	0.35 %	9,342,079 JPY	0.04 %
500,001 JPY - 1,000,000 JPY	794	4.70 %	279,389,587 JPY	1.20 %
1,000,001 JPY - 1,500,000 JPY	1,795	10.63 %	1,061,824,222 JPY	4.57 %
1,500,001 JPY - 2,000,000 JPY	2,832	16.77 %	2,460,422,075 JPY	10.59 %
2,000,001 JPY - 2,500,000 JPY	3,021	17.89 %	3,489,491,249 JPY	15.02 %
2,500,001 JPY - 3,000,000 JPY	3,019	17.88 %	4,231,689,288 JPY	18.21 %
3,000,001 JPY - 3,500,000 JPY	2,006	11.88 %	3,353,101,031 JPY	14.43 %
3,500,001 JPY - 4,000,000 JPY	1,280	7.58 %	2,483,287,036 JPY	10.69 %
4,000,001 JPY - 4,500,000 JPY	671	3.97 %	1,494,681,953 JPY	6.43 %
4,500,001 JPY - 5,000,000 JPY	464	2.75 %	1,190,521,171 JPY	5.12 %
5,000,001 JPY - 6,000,000 JPY	465	2.75 %	1,345,216,171 JPY	5.79 %
6,000,001 JPY - 7,000,000 JPY	245	1.45 %	842,081,270 JPY	3.62 %
7,000,001 JPY - 8,000,000 JPY	107	0.63 %	405,368,525 JPY	1.74 %
8,000,001 JPY - 9,000,000 JPY	59	0.35 %	247,739,149 JPY	1.07 %
9,000,001 JPY - 10,000,000 JPY	39	0.23 %	192,254,474 JPY	0.83 %
>= 10,000,001 JPY	30	0.18 %	149,463,390 JPY	0.64 %
Total	16,886	100.00 %	23,235,872,670 JPY	100.00 %

Statistics

Minimum Original Principal Balance	210,000 JPY
Maximum Original Principal Balance	16,000,000 JPY
Average Original Principal Balance	2,720,715 JPY

Distribution by Interest Rate paid by the Obligor

Interest Rate paid by the Obligor	Number of Loans	Percentage of Loans	Outstanding Discounted Principal Balance	Percentage of Balance
< 0.900 %	286	1.69 %	588,070,995 JPY	2.53 %
0.900 % < 1.500 %	2,895	17.14 %	4,556,265,975 JPY	19.61 %
1.500 % < 2.000 %	6,429	38.07 %	9,616,668,209 JPY	41.39 %
2.000 % < 2.500 %	123	0.73 %	205,239,214 JPY	0.88 %
2.500 % < 3.000 %	4,482	26.54 %	5,737,331,860 JPY	24.69 %
3.000 % < 3.500 %	707	4.19 %	377,894,430 JPY	1.63 %
3.500 % < 4.000 %	1,938	11.48 %	2,141,809,194 JPY	9.22 %
4.000 % < 4.500 %	26	0.15 %	12,592,793 JPY	0.05 %
4.500 % < 5.000 %	0	0.00 %	0 JPY	0.00 %
5.000 % or more	0	0.00 %	0 JPY	0.00 %
Total	16,886	100.00 %	23,235,872,670 JPY	100.00 %

Statistics	
Minimum Interest Rate	0.10 %
Maximum Interest Rate	4.49 %
Weighted Average Interest Rate	2.14 %

Distribution by Original Term

Length of Original Term (months)	Number of Loans	Percentage of Loans	Outstanding Discounted Principal Balance	Percentage of Balance
6 - 12	0	0.00 %	0 JPY	0.00 %
13 - 18	0	0.00 %	0 JPY	0.00 %
19 - 24	24	0.14 %	5,642,804 JPY	0.02 %
25 - 30	13	0.08 %	2,233,193 JPY	0.01 %
31 - 36	3,591	21.27 %	5,477,806,454 JPY	23.57 %
37 - 42	42	0.25 %	11,859,750 JPY	0.05 %
43 - 48	1,053	6.24 %	801,879,977 JPY	3.45 %
49 - 54	19	0.11 %	11,399,678 JPY	0.05 %
55 - 60	11,461	67.87 %	16,050,752,063 JPY	69.08 %
61 - 66	14	0.08 %	13,430,196 JPY	0.06 %
67 - 72	528	3.13 %	621,255,802 JPY	2.67 %
73 - 84	141	0.84 %	239,612,753 JPY	1.03 %
Total	16,886	100.00 %	23,235,872,670 JPY	100.00 %

Statistics	
Minimum Original Term in months	24
Maximum Original Term in months	84
Weighted Average Original Term in months	54.48

Distribution by Remaining Term

Length of Remaining Term (months)	Number of Loans	Percentage of Loans	Outstanding Discounted Principal Balance	Percentage of Balance
<= 12	5,278	31.26 %	6,212,264,810 JPY	26.74 %
13 - 18	2,172	12.86 %	2,534,915,377 JPY	10.91 %
19 - 24	3,939	23.33 %	5,184,930,032 JPY	22.31 %
25 - 30	3,450	20.43 %	5,640,025,044 JPY	24.27 %
31 - 36	1,596	9.45 %	2,774,822,844 JPY	11.94 %
37 - 42	356	2.11 %	699,363,642 JPY	3.01 %
43 - 48	68	0.40 %	126,526,258 JPY	0.54 %
49 - 54	20	0.12 %	42,282,417 JPY	0.18 %
55 - 60	3	0.02 %	9,469,705 JPY	0.04 %
61 - 66	4	0.02 %	11,272,541 JPY	0.05 %
67 - 72	0	0.00 %	0 JPY	0.00 %
73 - 84	0	0.00 %	0 JPY	0.00 %
Total	16,886	100.00 %	23,235,872,670 JPY	100.00 %

Statistics	
Minimum Remaining Term in months	1
Maximum Remaining Term in months	62
Weighted Average Remaining Term in months	20.05

Distribution by Seasoning

Seasoning (months)	Number of Loans	Percentage of Loans	Outstanding Discounted Principal Balance	Percentage of Balance
<= 12	0	0.00 %	0 JPY	0.00 %
13 - 18	0	0.00 %	0 JPY	0.00 %
19 - 24	756	4.48 %	1,432,596,461 JPY	6.17 %
25 - 30	3,053	18.08 %	5,111,563,415 JPY	22.00 %
31 - 36	6,330	37.49 %	9,435,694,648 JPY	40.61 %
37 - 42	4,121	24.40 %	5,076,209,051 JPY	21.85 %
43 - 48	1,370	8.11 %	1,399,977,345 JPY	6.03 %
49 - 54	718	4.25 %	504,106,402 JPY	2.17 %
55 - 60	466	2.76 %	245,783,423 JPY	1.06 %
61 - 66	42	0.25 %	21,137,347 JPY	0.09 %
67 - 72	20	0.12 %	6,352,215 JPY	0.03 %
73 - 84	10	0.06 %	2,452,363 JPY	0.01 %
Total	16,886	100.00 %	23,235,872,670 JPY	100.00 %

Statistics	
Minimum Seasoning in months	21
Maximum Seasoning in months	83
Weighted Average Seasoning in months	34.42

Distribution by Type of Car

Type of Car

Type of Car	Number of Loans	Percentage of Loans	Outstanding Discounted Principal Balance	Percentage of Balance
New	10,896	64.53 %	17,613,582,254 JPY	75.80 %
Used	5,990	35.47 %	5,622,290,416 JPY	24.20 %
Total	16,886	100.00 %	23,235,872,670 JPY	100.00 %

Type of Car: Only Balloon Loans

Type of Car	Number of Loans	Percentage of Loans	Outstanding Discounted Principal Balance	Percentage of Balance
New	10,205	73.78 %	16,924,390,133 JPY	80.91 %
Used	3,626	26.22 %	3,993,336,564 JPY	19.09 %
Total	13,831	100.00 %	20,917,726,697 JPY	100.00 %

Type of Car: Only Equal Instalment Loans

Type of Car	Number of Loans	Percentage of Loans	Outstanding Discounted Principal Balance	Percentage of Balance
New	691	22.62 %	689,192,121 JPY	29.73 %
Used	2,364	77.38 %	1,628,953,852 JPY	70.27 %
Total	3,055	100.00 %	2,318,145,973 JPY	100.00 %

Distribution by Brand and Model

Make	Model	Number of Loans	Percentage of Loans	Outstanding Discounted Principal Balance	Percentage of Balance
Audi	A1	477	2.82 %	453,910,436 JPY	1.95 %
	A3	1,159	6.86 %	1,460,985,367 JPY	6.29 %
	A4	1,118	6.62 %	2,050,665,686 JPY	8.83 %
	A5	271	1.60 %	492,301,241 JPY	2.12 %
	A6	352	2.08 %	684,216,757 JPY	2.94 %
	A7	131	0.78 %	338,959,595 JPY	1.46 %
	A8	34	0.20 %	87,441,657 JPY	0.38 %
	S1	50	0.30 %	77,869,144 JPY	0.34 %
	S3	165	0.98 %	323,564,339 JPY	1.39 %
	S4	52	0.31 %	123,507,261 JPY	0.53 %
	S5	24	0.14 %	57,334,296 JPY	0.25 %
	S6	20	0.12 %	62,154,235 JPY	0.27 %
	S7	15	0.09 %	38,613,349 JPY	0.17 %
	S8	5	0.03 %	19,730,909 JPY	0.08 %
	RS3	18	0.11 %	51,649,630 JPY	0.22 %
	RS4	10	0.06 %	22,375,076 JPY	0.10 %
	RS5	10	0.06 %	30,557,970 JPY	0.13 %
	RS6	7	0.04 %	30,248,012 JPY	0.13 %
	RS7	5	0.03 %	20,900,577 JPY	0.09 %
	Q2	51	0.30 %	112,036,414 JPY	0.48 %
	Q3	399	2.36 %	626,560,965 JPY	2.70 %
	Q5	228	1.35 %	435,932,645 JPY	1.88 %
	Q7	99	0.59 %	345,669,747 JPY	1.49 %
	RSQ3	15	0.09 %	46,313,919 JPY	0.20 %
	TT	378	2.24 %	688,132,747 JPY	2.96 %
	R8	7	0.04 %	27,068,400 JPY	0.12 %
	AUDI OTHERS	0	0.00 %	0 JPY	0.00 %
	Subtotal	5,100	30.20 %	8,708,700,374 JPY	37.48 %
Bentley	ARNAGE	0	0.00 %	0 JPY	0.00 %
	AZURE	0	0.00 %	0 JPY	0.00 %
	BENTAYGA	1	0.01 %	5,400,331 JPY	0.02 %
	CONTINENTAL	4	0.02 %	17,548,233 JPY	0.08 %
	FLYING SPUR	0	0.00 %	0 JPY	0.00 %
	MULSANNE	0	0.00 %	0 JPY	0.00 %
	BENTLEY OTHERS	0	0.00 %	0 JPY	0.00 %
		Subtotal	5	0.03 %	22,948,564 JPY
Lamborghini	AVENTADOR	0	0.00 %	0 JPY	0.00 %
	DIABLO	0	0.00 %	0 JPY	0.00 %
	GALLARDO	0	0.00 %	0 JPY	0.00 %
	HURACÁN	0	0.00 %	0 JPY	0.00 %
	MULCIELAGO	0	0.00 %	0 JPY	0.00 %
	LAMBORGHINI OTHERS	0	0.00 %	0 JPY	0.00 %
		Subtotal	0	0.00 %	0 JPY
VW	ARTEON	1	0.01 %	3,328,476 JPY	0.01 %
	BEETLE	1,176	6.96 %	1,332,194,277 JPY	5.73 %
	BORA	0	0.00 %	0 JPY	0.00 %
	EOS	0	0.00 %	0 JPY	0.00 %
	GOLF	4,594	27.21 %	6,094,997,394 JPY	26.23 %
	JETTA	4	0.02 %	580,048 JPY	0.00 %
	LUPO	1	0.01 %	971,039 JPY	0.00 %
	PASSAT	1,069	6.33 %	1,566,331,528 JPY	6.74 %
	POLO	2,402	14.22 %	2,313,125,912 JPY	9.95 %
	SCIROCCO	18	0.11 %	14,052,387 JPY	0.06 %
	SHARAN	396	2.35 %	575,350,271 JPY	2.48 %
	TIGUAN	401	2.37 %	665,422,189 JPY	2.86 %
	TOUAREG	37	0.22 %	61,781,933 JPY	0.27 %
	TOURAN	985	5.83 %	1,453,878,045 JPY	6.26 %
	UP	691	4.09 %	418,983,321 JPY	1.80 %
	VENTO	0	0.00 %	0 JPY	0.00 %
	VW OTHERS	0	0.00 %	0 JPY	0.00 %
	Subtotal	11,775	69.73 %	14,500,996,820 JPY	62.39 %
Non VW Group Vehicles		6	0.04 %	3,226,912 JPY	0.01 %
	Subtotal	6	0.04 %	3,226,912 JPY	0.01 %
	Total	16,886	100.00 %	23,235,872,670 JPY	100.00 %

Geographic Distribution by Prefecture

Prefecture	Number of Loans	Percentage of Loans	Outstanding Discounted Principal Balance	Percentage of Balance
Tokyo	2,445	14.48 %	3,806,395,929 JPY	16.38 %
Kanagawa	1,655	9.80 %	2,368,138,154 JPY	10.19 %
Aichi	1,184	7.01 %	1,592,278,206 JPY	6.85 %
Saitama	1,092	6.47 %	1,446,979,913 JPY	6.23 %
Osaka	930	5.51 %	1,329,647,357 JPY	5.72 %
Chiba	793	4.70 %	1,066,829,778 JPY	4.59 %
Fukuoka	701	4.15 %	988,943,620 JPY	4.26 %
Hokkaido	670	3.97 %	938,620,724 JPY	4.04 %
Hyogo	568	3.36 %	771,443,631 JPY	3.32 %
Ibaraki	545	3.23 %	691,300,284 JPY	2.98 %
Shizuoka	494	2.93 %	676,156,886 JPY	2.91 %
Tochigi	407	2.41 %	538,188,377 JPY	2.32 %
Hiroshima	418	2.48 %	533,062,403 JPY	2.29 %
Gunma	380	2.25 %	447,303,581 JPY	1.93 %
Miyagi	339	2.01 %	438,072,096 JPY	1.89 %
Kyoto	316	1.87 %	434,191,783 JPY	1.87 %
Nagano	273	1.62 %	334,760,690 JPY	1.44 %
Gifu	234	1.39 %	312,869,665 JPY	1.35 %
Okayama	215	1.27 %	300,467,653 JPY	1.29 %
Fukushima	234	1.39 %	283,771,712 JPY	1.22 %
Mie	225	1.33 %	270,225,396 JPY	1.16 %
Yamaguchi	200	1.18 %	262,647,238 JPY	1.13 %
Niigata	206	1.22 %	241,951,934 JPY	1.04 %
Oita	163	0.97 %	209,567,825 JPY	0.90 %
Kumamoto	151	0.89 %	199,178,891 JPY	0.86 %
Ishikawa	142	0.84 %	193,868,002 JPY	0.83 %
Toyama	145	0.86 %	190,196,699 JPY	0.82 %
Yamanashi	130	0.77 %	188,994,775 JPY	0.81 %
Shiga	138	0.82 %	185,438,718 JPY	0.80 %
Kagoshima	126	0.75 %	182,797,637 JPY	0.79 %
Nara	139	0.82 %	182,348,218 JPY	0.78 %
Yamagata	143	0.85 %	172,113,609 JPY	0.74 %
Wakayama	117	0.69 %	169,559,181 JPY	0.73 %
Fukui	109	0.65 %	151,322,589 JPY	0.65 %
Miyazaki	85	0.50 %	124,101,497 JPY	0.53 %
Iwate	92	0.54 %	122,884,423 JPY	0.53 %
Nagasaki	92	0.54 %	115,381,358 JPY	0.50 %
Tokushima	78	0.46 %	110,690,701 JPY	0.48 %
Ehime	78	0.46 %	97,909,601 JPY	0.42 %
Saga	75	0.44 %	95,981,330 JPY	0.41 %
Kagawa	73	0.43 %	94,536,544 JPY	0.41 %
Akita	58	0.34 %	79,289,243 JPY	0.34 %
Shimane	55	0.33 %	77,956,707 JPY	0.34 %
Aomori	61	0.36 %	73,854,773 JPY	0.32 %
Kouchi	37	0.22 %	51,853,140 JPY	0.22 %
Tottori	45	0.27 %	49,192,790 JPY	0.21 %
Okinawa	30	0.18 %	42,607,409 JPY	0.18 %
Total	16,886	100.00 %	23,235,872,670 JPY	100.00 %

Distribution by Obligor Concentration

Distribution of Loan Contracts and Vehicles per Obligor

Contract Concentration	Number of Customers	Percentage of Customers	Number of Loans	Percentage of Loans	Outstanding Discounted Principal Balance	Percentage of Balance
1	16,282	96.74 %	16,282	96.42 %	22,285,858,694 JPY	95.91 %
2	517	3.07 %	566	3.35 %	875,328,087 JPY	3.77 %
3	25	0.15 %	29	0.17 %	57,160,148 JPY	0.25 %
4	6	0.04 %	9	0.05 %	17,525,741 JPY	0.08 %
5	0	0.00 %	0	0.00 %	0 JPY	0.00 %
6 - 10	0	0.00 %	0	0.00 %	0 JPY	0.00 %
11 or more	0	0.00 %	0	0.00 %	0 JPY	0.00 %
Total	16,830	100.00 %	16,886	100.00 %	23,235,872,670 JPY	100.00 %

Top 20 Obligor

Number	Number of Contracts	Outstanding Discounted Principal Balance	Percentage of Balance
1	2	11,041,579 JPY	0.05 %
2	1	8,229,636 JPY	0.04 %
3	1	7,945,928 JPY	0.03 %
4	1	7,381,527 JPY	0.03 %
5	1	7,111,051 JPY	0.03 %
6	1	6,918,743 JPY	0.03 %
7	2	6,804,257 JPY	0.03 %
8	1	6,460,154 JPY	0.03 %
9	1	6,442,114 JPY	0.03 %
10	1	6,374,001 JPY	0.03 %
11	2	6,364,453 JPY	0.03 %
12	1	6,143,078 JPY	0.03 %
13	1	6,129,929 JPY	0.03 %
14	2	6,096,546 JPY	0.03 %
15	1	6,089,500 JPY	0.03 %
16	1	6,054,201 JPY	0.03 %
17	1	6,037,187 JPY	0.03 %
18	1	6,029,521 JPY	0.03 %
19	1	6,012,082 JPY	0.03 %
20	1	5,943,549 JPY	0.03 %
Total 1 -20	24	135,609,036 JPY	0.58 %

Remarks:

Figures above are calculated based on each of the Sub-Servicers respectively and not across both of the Sub-Servicers.

Distribution by Contract Start Month

Origination Month	Number of Loans	Percentage of Loans	Outstanding Discounted Principal Balance	Percentage of Balance
09.2012	2	0.01 %	78,413 JPY	0.00 %
10.2012	0	0.00 %	0 JPY	0.00 %
11.2012	0	0.00 %	0 JPY	0.00 %
12.2012	3	0.02 %	383,008 JPY	0.00 %
01.2013	0	0.00 %	0 JPY	0.00 %
02.2013	2	0.01 %	515,412 JPY	0.00 %
03.2013	2	0.01 %	669,211 JPY	0.00 %
04.2013	0	0.00 %	0 JPY	0.00 %
05.2013	0	0.00 %	0 JPY	0.00 %
06.2013	0	0.00 %	0 JPY	0.00 %
07.2013	1	0.01 %	806,319 JPY	0.00 %
08.2013	1	0.01 %	2,570,731 JPY	0.01 %
09.2013	5	0.03 %	597,251 JPY	0.00 %
10.2013	2	0.01 %	117,766 JPY	0.00 %
11.2013	2	0.01 %	277,932 JPY	0.00 %
12.2013	6	0.04 %	1,495,161 JPY	0.01 %
01.2014	4	0.02 %	1,293,374 JPY	0.01 %
02.2014	11	0.07 %	5,055,616 JPY	0.02 %
03.2014	6	0.04 %	2,312,453 JPY	0.01 %
04.2014	5	0.03 %	2,591,710 JPY	0.01 %
05.2014	6	0.04 %	4,005,456 JPY	0.02 %
06.2014	7	0.04 %	3,013,474 JPY	0.01 %
07.2014	7	0.04 %	4,158,638 JPY	0.02 %
08.2014	6	0.04 %	3,899,499 JPY	0.02 %
09.2014	113	0.67 %	53,680,344 JPY	0.23 %
10.2014	73	0.43 %	32,394,957 JPY	0.14 %
11.2014	83	0.49 %	44,041,170 JPY	0.19 %
12.2014	113	0.67 %	67,833,960 JPY	0.29 %
01.2015	78	0.46 %	43,933,493 JPY	0.19 %
02.2015	156	0.92 %	98,577,458 JPY	0.42 %
03.2015	158	0.94 %	104,769,187 JPY	0.45 %
04.2015	64	0.38 %	42,246,584 JPY	0.18 %
05.2015	119	0.70 %	80,288,019 JPY	0.35 %
06.2015	119	0.70 %	89,699,246 JPY	0.39 %
07.2015	102	0.60 %	88,525,908 JPY	0.38 %
08.2015	132	0.78 %	115,887,133 JPY	0.50 %
09.2015	196	1.16 %	173,557,443 JPY	0.75 %
10.2015	144	0.85 %	140,312,759 JPY	0.60 %
11.2015	152	0.90 %	156,538,020 JPY	0.67 %
12.2015	318	1.88 %	327,555,432 JPY	1.41 %
01.2016	428	2.53 %	486,126,558 JPY	2.09 %
02.2016	633	3.75 %	766,591,767 JPY	3.30 %
03.2016	953	5.64 %	1,109,364,073 JPY	4.77 %
04.2016	456	2.70 %	562,728,534 JPY	2.42 %
05.2016	663	3.93 %	809,591,000 JPY	3.48 %
06.2016	678	4.02 %	874,474,931 JPY	3.76 %
07.2016	738	4.37 %	953,458,746 JPY	4.10 %
08.2016	882	5.22 %	1,248,159,170 JPY	5.37 %
09.2016	1,694	10.03 %	2,441,240,203 JPY	10.51 %
10.2016	1,111	6.58 %	1,614,109,800 JPY	6.95 %
11.2016	1,556	9.21 %	2,407,565,763 JPY	10.36 %
12.2016	586	3.47 %	917,680,159 JPY	3.95 %
01.2017	501	2.97 %	806,939,553 JPY	3.47 %
02.2017	626	3.71 %	991,873,873 JPY	4.27 %
03.2017	953	5.64 %	1,561,486,999 JPY	6.72 %
04.2017	363	2.15 %	607,146,161 JPY	2.61 %
05.2017	428	2.53 %	735,399,636 JPY	3.16 %
06.2017	447	2.65 %	791,560,333 JPY	3.41 %
07.2017	236	1.40 %	424,096,413 JPY	1.83 %
08.2017	252	1.49 %	478,365,994 JPY	2.06 %
09.2017	286	1.69 %	525,377,713 JPY	2.26 %
10.2017	154	0.91 %	290,066,711 JPY	1.25 %
11.2017	64	0.38 %	138,786,043 JPY	0.60 %
12.2017	0	0.00 %	0 JPY	0.00 %
01.2018	0	0.00 %	0 JPY	0.00 %
02.2018	0	0.00 %	0 JPY	0.00 %
03.2018	0	0.00 %	0 JPY	0.00 %
04.2018	0	0.00 %	0 JPY	0.00 %
05.2018	0	0.00 %	0 JPY	0.00 %
06.2018	0	0.00 %	0 JPY	0.00 %
07.2018	0	0.00 %	0 JPY	0.00 %
08.2018	0	0.00 %	0 JPY	0.00 %
09.2018	0	0.00 %	0 JPY	0.00 %
10.2018	0	0.00 %	0 JPY	0.00 %
11.2018	0	0.00 %	0 JPY	0.00 %
12.2018	0	0.00 %	0 JPY	0.00 %
01.2019	0	0.00 %	0 JPY	0.00 %
02.2019	0	0.00 %	0 JPY	0.00 %
03.2019	0	0.00 %	0 JPY	0.00 %
04.2019	0	0.00 %	0 JPY	0.00 %
05.2019	0	0.00 %	0 JPY	0.00 %
06.2019	0	0.00 %	0 JPY	0.00 %
07.2019	0	0.00 %	0 JPY	0.00 %
08.2019	0	0.00 %	0 JPY	0.00 %
Total	16,886	100.00 %	23,235,872,670 JPY	100.00 %

Distribution by Contract End Month

Maturity Month	Number of Loans	Percentage of Loans	Outstanding Discounted Principal Balance	Percentage of Balance
09.2019	708	4.19 %	788,102,661 JPY	3.39 %
10.2019	510	3.02 %	555,697,356 JPY	2.39 %
11.2019	693	4.10 %	915,196,864 JPY	3.94 %
12.2019	400	2.37 %	454,401,639 JPY	1.96 %
01.2020	331	1.96 %	383,430,291 JPY	1.65 %
02.2020	483	2.86 %	511,377,659 JPY	2.20 %
03.2020	648	3.84 %	772,626,592 JPY	3.33 %
04.2020	222	1.31 %	299,309,187 JPY	1.29 %
05.2020	326	1.93 %	393,219,983 JPY	1.69 %
06.2020	353	2.09 %	440,324,973 JPY	1.90 %
07.2020	270	1.60 %	279,037,403 JPY	1.20 %
08.2020	334	1.98 %	419,540,202 JPY	1.81 %
09.2020	365	2.16 %	434,159,863 JPY	1.87 %
10.2020	230	1.36 %	271,135,450 JPY	1.17 %
11.2020	253	1.50 %	287,149,249 JPY	1.24 %
12.2020	301	1.78 %	306,237,183 JPY	1.32 %
01.2021	407	2.41 %	470,396,981 JPY	2.02 %
02.2021	616	3.65 %	765,836,651 JPY	3.30 %
03.2021	878	5.20 %	1,077,300,589 JPY	4.64 %
04.2021	435	2.58 %	544,588,637 JPY	2.34 %
05.2021	611	3.62 %	758,104,679 JPY	3.26 %
06.2021	621	3.68 %	827,784,796 JPY	3.56 %
07.2021	649	3.84 %	892,135,650 JPY	3.84 %
08.2021	745	4.41 %	1,085,015,681 JPY	4.67 %
09.2021	1,050	6.22 %	1,623,015,335 JPY	6.98 %
10.2021	640	3.79 %	1,027,829,750 JPY	4.42 %
11.2021	867	5.13 %	1,450,756,188 JPY	6.24 %
12.2021	311	1.84 %	515,965,233 JPY	2.22 %
01.2022	262	1.55 %	461,783,765 JPY	1.99 %
02.2022	320	1.90 %	560,674,773 JPY	2.41 %
03.2022	529	3.13 %	899,888,186 JPY	3.87 %
04.2022	218	1.29 %	355,524,252 JPY	1.53 %
05.2022	257	1.52 %	443,422,093 JPY	1.91 %
06.2022	256	1.52 %	466,000,248 JPY	2.01 %
07.2022	156	0.92 %	285,588,108 JPY	1.23 %
08.2022	180	1.07 %	324,399,957 JPY	1.40 %
09.2022	162	0.96 %	325,276,306 JPY	1.40 %
10.2022	96	0.57 %	196,041,948 JPY	0.84 %
11.2022	49	0.29 %	95,301,158 JPY	0.41 %
12.2022	21	0.12 %	37,091,443 JPY	0.16 %
01.2023	13	0.08 %	19,825,231 JPY	0.09 %
02.2023	15	0.09 %	25,827,556 JPY	0.11 %
03.2023	19	0.11 %	32,275,868 JPY	0.14 %
04.2023	8	0.05 %	13,132,321 JPY	0.06 %
05.2023	16	0.09 %	31,574,265 JPY	0.14 %
06.2023	13	0.08 %	21,793,916 JPY	0.09 %
07.2023	5	0.03 %	11,660,256 JPY	0.05 %
08.2023	7	0.04 %	16,089,632 JPY	0.07 %
09.2023	7	0.04 %	14,694,533 JPY	0.06 %
10.2023	9	0.05 %	16,850,727 JPY	0.07 %
11.2023	1	0.01 %	1,768,560 JPY	0.01 %
12.2023	1	0.01 %	4,096,273 JPY	0.02 %
01.2024	1	0.01 %	2,137,782 JPY	0.01 %
02.2024	1	0.01 %	2,734,542 JPY	0.01 %
03.2024	1	0.01 %	3,534,677 JPY	0.02 %
04.2024	1	0.01 %	2,591,493 JPY	0.01 %
05.2024	0	0.00 %	0 JPY	0.00 %
06.2024	0	0.00 %	0 JPY	0.00 %
07.2024	1	0.01 %	3,343,535 JPY	0.01 %
08.2024	0	0.00 %	0 JPY	0.00 %
09.2024	1	0.01 %	2,258,680 JPY	0.01 %
10.2024	3	0.02 %	9,013,861 JPY	0.04 %
Total	16,886	100.00 %	23,235,872,670 JPY	100.00 %

Distribution by Monthly Payment

Monthly Payment	Number of Loans	Percentage of Loans	Outstanding Discounted Principal Balance	Percentage of Balance
<= 10,000 JPY	850	5.03 %	798,820,170 JPY	3.44 %
10,001 JPY - 20,000 JPY	3,341	19.79 %	3,321,963,178 JPY	14.30 %
20,001 JPY - 30,000 JPY	4,777	28.29 %	5,544,012,204 JPY	23.86 %
30,001 JPY - 40,000 JPY	3,531	20.91 %	4,903,092,756 JPY	21.10 %
40,001 JPY - 50,000 JPY	1,873	11.09 %	3,018,852,188 JPY	12.99 %
50,001 JPY - 60,000 JPY	1,021	6.05 %	1,874,071,116 JPY	8.07 %
60,001 JPY - 70,000 JPY	514	3.04 %	1,095,807,054 JPY	4.72 %
70,001 JPY - 80,000 JPY	287	1.70 %	681,145,817 JPY	2.93 %
80,001 JPY - 90,000 JPY	197	1.17 %	490,427,415 JPY	2.11 %
90,001 JPY - 100,000 JPY	143	0.85 %	382,878,553 JPY	1.65 %
100,001 JPY - 110,000 JPY	90	0.53 %	252,036,029 JPY	1.08 %
110,001 JPY - 120,000 JPY	72	0.43 %	231,201,949 JPY	1.00 %
120,001 JPY - 130,000 JPY	58	0.34 %	183,682,295 JPY	0.79 %
130,001 JPY - 140,000 JPY	28	0.17 %	107,328,265 JPY	0.46 %
140,001 JPY - 150,000 JPY	30	0.18 %	99,674,026 JPY	0.43 %
>= 150,001 JPY	74	0.44 %	250,879,655 JPY	1.08 %
Total	16,886	100.00 %	23,235,872,670 JPY	100.00 %

Distribution by Bonus Payment

Bonus Payment	Number of Loans	Percentage of Loans	Outstanding Discounted Principal Balance	Percentage of Balance
No Bonus Payment	9,812	58.11 %	13,182,517,666 JPY	56.73 %
1 JPY - 25,000 JPY	185	1.10 %	181,794,897 JPY	0.78 %
25,001 JPY - 50,000 JPY	1,853	10.97 %	2,152,258,039 JPY	9.26 %
50,001 JPY - 75,000 JPY	683	4.04 %	901,839,273 JPY	3.88 %
75,001 JPY - 100,000 JPY	2,448	14.50 %	3,442,999,643 JPY	14.82 %
100,001 JPY - 125,000 JPY	327	1.94 %	470,670,846 JPY	2.03 %
125,001 JPY - 150,000 JPY	911	5.40 %	1,521,919,690 JPY	6.55 %
150,001 JPY - 175,000 JPY	90	0.53 %	163,274,894 JPY	0.70 %
175,001 JPY - 200,000 JPY	363	2.15 %	726,811,597 JPY	3.13 %
200,001 JPY - 225,000 JPY	28	0.17 %	56,150,618 JPY	0.24 %
225,001 JPY - 250,000 JPY	89	0.53 %	193,903,821 JPY	0.83 %
250,001 JPY - 275,000 JPY	5	0.03 %	11,966,638 JPY	0.05 %
275,001 JPY - 300,000 JPY	61	0.36 %	142,156,440 JPY	0.61 %
300,001 JPY - 325,000 JPY	2	0.01 %	4,086,367 JPY	0.02 %
325,001 JPY - 350,000 JPY	11	0.07 %	25,421,372 JPY	0.11 %
350,001 JPY - 375,000 JPY	1	0.01 %	4,262,190 JPY	0.02 %
375,001 JPY - 400,000 JPY	11	0.07 %	39,602,651 JPY	0.17 %
400,001 JPY - 425,000 JPY	0	0.00 %	0 JPY	0.00 %
425,001 JPY - 450,000 JPY	1	0.01 %	4,692,471 JPY	0.02 %
450,001 JPY - 475,000 JPY	0	0.00 %	0 JPY	0.00 %
475,001 JPY - 500,000 JPY	4	0.02 %	7,834,339 JPY	0.03 %
500,001 JPY or more	1	0.01 %	1,709,218 JPY	0.01 %
Total	16,886	100.00 %	23,235,872,670 JPY	100.00 %

Distribution by Motor Type

Motor Type	Number of Loans	Percentage of Loans	Outstanding Discounted Principal Balance	Percentage of Balance
EA 189	0	0.00 %	0 JPY	0.00 %
Other	16,886	100.00 %	23,235,872,670 JPY	100.00 %
Total	16,886	100.00 %	23,235,872,670 JPY	100.00 %

Disclaimer

This presentation contains forward-looking statements and information on the business development of the Volkswagen Group. These statements may be spoken or written and can be recognized by terms such as "expects", "anticipates", "intends", "plans", "believes", "seeks", "estimates", "will", or words with similar meaning. These statements are based on assumptions relating to the development of the economies of individual countries, and in particular of the automotive industry, which we have made on the basis of the information available to us and which we consider to be realistic at the time of going to press. The estimates given involve a degree of risk, and the actual developments may differ from those forecast.

Consequently, any unexpected fall in demand or economic stagnation in our key sales markets, such as in Western Europe (and especially Germany) or in the USA, Brazil or China, will have a corresponding impact on the development of our business. The same applies in the event of a significant shift in current exchange rates relative to the US dollar, sterling, yen, Brazilian real, Chinese renminbi and Czech koruna.

If any of these or other risks occur, or if the assumptions underlying any of these statements prove incorrect, the actual results may significantly differ from those expressed or implied by such statements.

We do not update forward-looking statements retrospectively. Such statements are valid on the date of publication and can be superceded.

This information does not constitute an offer to exchange or sell or an offer to exchange or buy any securities.