

Deal Name: Driver Japan six

Originator: Volkswagen Financial Services Japan Ltd.
Gotenyama Trust Tower 17F
7-35 Kitashinagawa 4-chome, Shinagawa-ku
Tokyo 140-0001, Japan

Reporting Entity: Volkswagen Financial Services Japan Ltd.
Treasury Dept.
Gotenyama Trust Tower 17F
7-35 Kitashinagawa 4-chome, Shinagawa-ku
Tokyo 140-0001, Japan
Tel No.: +81(0)3-5792-7261
Fax No.: +81(0)3-3280-7365
E-mail: vwfsjp.abs@vwfs.com

**Trustor of the First Trust:
Servicer:** Volkswagen Financial Services Japan Ltd.

**Trustee of the First Trust:
Trustee of the Second Trust:** Deutsche Trust Company Limited Japan
Sanno Park Tower, 11-1,
Nagatacho 2-chome, Chiyoda-ku,
Tokyo, 100-6172, Japan
Trust Business Administration Department
Tel No.: +81(0)3-5156-5637
Fax No.: +81(0)3-5156-5658
E-mail: DB_Trust_Trust@list.db.com



Contents

Page	Tables of Contents
1	Front Page
2	Contents
3	Deal Overview
4	Deal Overview: Counterparties I
5	Deal Overview: Counterparties II
6	Information regarding the TBI and ABL to the Second Trust
7	Pool Information
8	Available Distribution
9	Waterfall
10	Credit Enhancement
11	Cumulative Gross Loss Ratio & Performance Trigger
12	Cumulative Gross Loss Ratio & Performance Trigger (Chart)
13	Default & Delinquencies
14	Run Out Schedule (Previous)
15	Run Out Schedule
16	Expected Amortization to the Second Trust
17	Sub-Servicer
18	Brand
19	New and Used
20	Product Type
21	RV
22	Brand New and Used
23	Customer Type
24	Outstanding Discounted Principal Balance
25	Original Principal Amount
26	Interest Rate paid by the Obligor
27	Original Term
28	Remaining Term
29	Seasoning
30	Type of Car
31	Brand and Model
32	Geographic Dist. by Prefecture
33	Obligor Concentration
34	Contract Start Month
35	Contract End Month
36	Monthly payment
37	Bonus payment
38	Mortor Type

Deal Overview

Cut Off Date:	2017/02/10		
Trust Commencement Date:	2017/02/23	Legal Maturity of the First Trust:	2025/06/27
Monthly Period:	2019/06/11	to	2019/07/10
Reporting Date:	2019/07/18		
Reporting Frequency:	monthly		
Period No.:	29		
Remittance Date:	2019/07/23		
Advance Payment Date:	2019/07/23		
Cash Adjustment Date:	2019/07/23		
Additional Entrustment Date:	2019/07/25		
Trust Calculation Date:	2019/07/25		
Trust Calculation Period:	2019/06/27	to	2019/07/25
First Trust Payment Date:	2019/07/26		
Second Trust Payment Date:	2019/07/29		
Interest Calculation Period:	2019/06/29	to	2019/07/29
Next Reporting Date:	2019/08/19		

Pool information at the Initial Cut off Date

	Number of Contracts	Outstanding Discounted Principal Balance	Outstanding Nominal Balance
Outstanding Pool	30,757	64,171,706,472 JPY	67,028,993,300 JPY

Credit Type	Percentage of Loans	Outstanding Discounted Principal Balance	Percentage of Balance
Balloon	76.13 %	55,443,642,000 JPY	86.40 %
Equal Instalment Loan	23.87 %	8,728,064,472 JPY	13.60 %
Total	100.00 %	64,171,706,472 JPY	100.00 %

Type of Car	Percentage of Loans	Outstanding Discounted Principal Balance	Percentage of Balance
New	66.66 %	49,506,381,305 JPY	77.15 %
Used	33.34 %	14,665,325,167 JPY	22.85 %
Total	100.00 %	64,171,706,472 JPY	100.00 %

Deal Overview: Counterparties I

Joint Lead Managers:

Shinsei Securities Co., Ltd.
 Nihonbashi Muromachi Nomura Building, 4-3,
 Nihonbashi-muromachi 2-chome,
 Chuo-ku,
 Tokyo 103-0022, Japan

BNP Paribas Securities (Japan) Limited
 GranTokyo North Tower, 9-1,
 Marunouchi 1-chome,
 Chiyoda-ku,
 Tokyo 100-6740, Japan

Trust Management Account Bank:

MUFG Bank, Ltd.
 4-2 Toranomom 1-chome,
 Minato-ku
 Tokyo 105-0001, Japan

Originator:

Trustor of the First Trust:

Servicer:

Volkswagen Financial Services Japan Ltd.
 Gotenyama Trust Tower 17F
 7-35 Kitashinagawa 4-chome, Shinagawa-ku
 Tokyo 140-0001, Japan

Trustee of the First Trust:

Trustee of the Second Trust:

Deutsche Trust Company Limited Japan
 Attn.: Driver Japan Six
 Trust Business Administration Department

ABL Lender to the First Trust:

Trustor of the Second Trust:

Shinsei Securities Co., Ltd.

Seller of the Trust Beneficial

Interest of the Second Trust

Shinsei Securities Co., Ltd.
 BNP Paribas Securities (Japan) Limited

Rating								
Moody's			Fitch			R&I		
Long Term	Short Term	Outlook	Long Term	Short Term	Outlook	Long Term	Short Term	Outlook
n.a.	n.a.	n.a.	n.a.	n.a.	n.a.	n.a.	n.a.	n.a.
n.a.	n.a.	n.a.	n.a.	n.a.	n.a.	n.a.	n.a.	n.a.
A1	P-1	Stable	A	F1	Stable	AA-	a-1+	Stable

Deal Overview: Counterparties II

Rating Agencies:

Moody's SF Japan K.K.

Attn.: Driver Japan six
 Structure Finance Group Monitoring Division
 5-1 Atago 2-chome, Minato-ku
 Tokyo 105-6220, Japan
 E-mail: monitor.msfi@moodys.com

Fitch Ratings Japan Limited

Attn.: Driver Japan six
 Structured Finance
 Kojimachi Crystal City East Wing 3rd Floor,
 4-8 Kōjimachi, Chiyoda-ku,
 Tokyo 102-0083, Japan
 E-mail: tokyo.surveillance@fitchratings.com

Rating and Investment Information, Inc.

Attn.: Monitoring Group Department:
 Structured Finance Department
 TERRACE SQUARE, 3-22,
 Kanda Nishikicho, Chiyoda-ku,
 Tokyo 101-0054, Japan
 E-mail: sfmonitor@r-i.co.jp

Rating of VW

Volkswagen Financial Services AG

Volkswagen AG

Rating								
Moody's			Fitch			R&I		
Short Term	Long Term	Outlook	Short Term	Long Term	Outlook	Short Term	Long Term	Outlook
P-2	A3	Stable	n.a.	n.a.	n.a.	n.a.	n.a.	n.a.
P-2	A3	Stable	F1	BBB+	Stable	n.a.	n.a.	n.a.

Information regarding Trust Beneficial Interest of the Second Trust & Asset Backed Loan to the Second Trust
Rating Details
Rating at Issue Date

	<u>TBI</u>	<u>ABL</u>
Moody's	Aaa(sf)	Aaa(sf)
Fitch	AAAsf	AAAsf
R&I	AAA	AAA

Current Rating

	<u>TBI</u>	<u>ABL</u>
Moody's	Aaa(sf)	Aaa(sf)
Fitch	AAAsf	AAAsf
R&I	AAA	AAA

Information on TBI & ABL

	<u>TBI</u>	<u>ABL</u>
Initial Balance	39,200,000,000 JPY	20,800,000,000 JPY
Expected Maturity Date	2021/06/28	2021/06/28
Legal Maturity of the Second Trust	2025/06/30	2025/06/30
Payment Dates	28th	28th
Business Day Convention	Modified Following	Modified Following
Listing	None	—

Information on Interest

	<u>TBI</u>	<u>ABL</u>
Fixed/ Floating	Fixed	Fixed
Current Coupon	0.19%	0.19%
Day Count Convention	30/360	30/360

Selling Restriction

The holders of the Beneficial Interest and the ABL Lenders* are prohibited from dividing, assigning, pledging or creating any other security interest over any of the Beneficial Interest and the Asset Backed Loans without the prior written approval of the Trustee of the Second Trust.

(*)The holders of the Beneficial Interest and the ABL Lenders are limited to specified investors (*tokutei toushika*) as defined under Paragraph 31 of Article 2 of the Financial Instruments and Exchange Act (Law no.25 of 1948 as amended).

Clean-Up Call

VWFS Japan as the Trustor of the First Trust has a right at its option to exercise a clean-up call to repurchase of all, but not part, of the outstanding Auto Loan Receivables from the Trustee of the First Trust on any Trust Calculation Date, the Discounted Principal Balance of all outstanding Auto Loan Receivables is expected to be less than ten percent (10%) of the Discounted Principal Balance of the Initial Auto Loan Receivables as of the Initial Cut-off Date after the distribution pursuant to Article 18.1 of the First Trust Agreement on the immediately following First Trust Payment Date.

Pool Information
Pool Balance on Initial Cut-Off Date

Status	Number of Contracts	Outstanding Discounted Principal Balance
Normal	30,757	64,171,706,472 JPY
Cancellation	0	0 JPY
Early Termination	0	0 JPY
Defaulted Receivables	0	0 JPY
Matured	0	0 JPY
Refinance Option	0	0 JPY
Repurchase	0	0 JPY
Total	30,757	64,171,706,472 JPY

Pool Balance before entrustment of Additional Auto Loan Receivables

Status	Number of Contracts on previous EoP	Outstanding Discounted Principal Balance on previous EoP	Number of Contracts "as Collections" during the relevant Monthly Period*	Outstanding Discounted Principal Balance "as Collections" during the relevant Monthly Period*	Number of Contracts EoP before entrustment of Additional Auto Loan Receivables	Outstanding Discounted Principal Balance EoP before entrustment of Additional Auto Loan Receivables
Normal	19,664	29,323,928,172 JPY	18,640	895,583,324 JPY	18,640	27,025,011,548 JPY
Cancellation	0	0 JPY	0	0 JPY	0	0 JPY
Early Termination	0	0 JPY	378	657,249,568 JPY	0	0 JPY
Defaulted Receivables	0	0 JPY	4	9,711,055 JPY	0	0 JPY
Matured	0	0 JPY	486	494,420,556 JPY	0	0 JPY
Refinance Option	0	0 JPY	156	241,952,121 JPY	0	0 JPY
Repurchase	0	0 JPY	0	0 JPY	0	0 JPY
Total	19,664	29,323,928,172 JPY	19,664	2,298,916,624 JPY	18,640	27,025,011,548 JPY

Pool Balance after entrustment of Additional Auto Loan Receivables

Status	Number of Contracts EoP before entrustment of Additional Auto Loan Receivables	Outstanding Discounted Principal Balance EoP before entrustment of Additional Auto Loan Receivables	Number of Contracts of Additional Auto Loan Receivables	Outstanding Discounted Principal Balance of Additional Auto Loan Receivables	Number of Contracts EoP after entrustment of Additional Auto Loan Receivables	Outstanding Discounted Principal Balance EoP after entrustment of Additional Auto Loan Receivables
Normal	18,640	27,025,011,548 JPY	0	0 JPY	18,640	27,025,011,548 JPY
Cancellation	0	0 JPY	0	0 JPY	0	0 JPY
Early Termination	0	0 JPY	0	0 JPY	0	0 JPY
Defaulted Receivables	0	0 JPY	0	0 JPY	0	0 JPY
Matured	0	0 JPY	0	0 JPY	0	0 JPY
Refinance Option	0	0 JPY	0	0 JPY	0	0 JPY
Repurchase	0	0 JPY	0	0 JPY	0	0 JPY
Total	18,640	27,025,011,548 JPY	0	0 JPY	18,640	27,025,011,548 JPY

Limits on Eligibility Criteria

Status Limits on Eligibility Criteria (v) (including Additional Entrustment)	Current Exposure in %	Limits in % of the aggregate Discounted Principal Balance of the Auto Loan Receivables outstanding	Status
(i) on Used Purchased Vehicle	23.74 %	35 %	-*
(ii) on Non-VW Vehicles	0.01 %	5 %	-*
(iii) on Balloon Payment	51.26 %	50 %	-*

(*) not applicable since the Revolving Period ended

Outstanding Balances

Monthly Period: from 2019/06/11 to 2019/07/10
Reporting Date: 2019/07/18
Trust Calculation Date: 2019/07/25

Outstanding Balances

	Number of Contracts	Aggregate Amount of the Discounted Principal Balance	Aggregate Amount of the Nominal Balance
Balance on the previous EoP	19,664	29,323,928,172 JPY	30,137,732,600 JPY
Balance after counting on the Collections during the relevant Monthly Period	18,640	27,025,011,548 JPY	27,772,698,100 JPY
Balance of Additional Auto Loan Receivables	0	0 JPY	0 JPY
Aggregate Amount of Auto Loan Receivables	18,640	27,025,011,548 JPY	27,772,698,100 JPY

Collections

	Number of Contracts	Aggregate Amount of the Discounted Principal Balance	Aggregate Amount of the Nominal Balance
Collections: Amortization of current contracts	18,640	895,583,324 JPY	945,911,000 JPY
Collections: Cancellation	0	0 JPY	0 JPY
Collections: Early Termination	378	657,249,568 JPY	657,945,681 JPY
Collections: Defaulted Receivables	4	9,711,055 JPY	9,744,124 JPY
Collections: Matured	486	494,420,556 JPY	495,171,200 JPY
Collections: Refinance Option	156	241,952,121 JPY	242,310,000 JPY
Collections: Repurchase	0	0 JPY	0 JPY
Sum	19,664	2,298,916,624 JPY	2,351,082,005 JPY

Available Distribution Amount

	Number of Contracts	Aggregate Amount of the Nominal Balance
(a) the Collections for the Monthly Period with respect to such Trust Calculation Date	19,664	2,351,082,005 JPY
(b) drawings from the Cash Collateral Ledger in accordance with Article 18.3 of the First Trust Agreement	0	0 JPY
(c) net investment earnings from Eligible Investments	0	0 JPY
(d) net proceeds from the sale or disposal of the Trust Assets of the First Trust	0	0 JPY
(e) any amount which is carried over from the immediately preceding Trust Calculation Date	0	0 JPY
Sum	19,664	2,351,082,005 JPY

Waterfall

There is no distinction between principal and interest, and all collections go through a single priority of payments			
		Payment	Remaining Amount
Available Distribution Amount	plus	2,351,082,005 JPY	2,351,082,005 JPY
(a) an amount necessary for the payment of all taxes and public charges to be paid to the relevant public authority by the immediately following First Trust Payment Date.	less	0 JPY	2,351,082,005 JPY
(b) an amount necessary for the payment of all Fees for the Trustee of the First Trust to be paid to the Trustee of the First Trust by the immediately following First Trust Payment Date.	less	263,915 JPY	2,350,818,090 JPY
(c) an amount necessary for the payment of the Servicing Fee to be paid to the Servicer by the immediately following First Trust Payment Date.	less	26,391,534 JPY	2,324,426,556 JPY
(d) an amount necessary for the payment of the Trust Expenses of the First Trust as provided in Article 23.1 (including the Rating Fees, Costs of the Second Trust and those fees not otherwise covered by (b) or (c) above) to be paid to the relevant party by the immediately following First Trust Payment Date (including any amounts advanced by the Trustee of the First Trust pursuant to Article 23.3)	less	279,359 JPY	2,324,147,197 JPY
(e) an amount necessary for the payment of overdue and unpaid interest on the Asset Backed Loans to the First Trust (if any) to be paid to the Trustee of the Second Trust by the immediately following First Trust Payment Date.	less	0 JPY	2,324,147,197 JPY
(f) an amount necessary for the payment to the Trustee of the Second Trust of interest on the Asset Backed Loan to the First Trust accruing during the relevant Interest Calculation Period	less	4,109,015 JPY	2,320,038,182 JPY
(g) an amount necessary to top up the balance thereof until it is equal to the Cash Collateral Ledger Target Balance	less	0 JPY	2,320,038,182 JPY
(h) (i) prior to the expiration of the Revolving Period: an amount necessary for the redemption of any Additional Senior Beneficial Interest;	less	2,034,541,213 JPY	285,496,969 JPY
(ii) following the expiration of the Revolving Period and prior to the occurrence of an Early Amortization Event, an amount necessary for the payment to the Trustee of the Second Trust of the Asset Backed Loan Principal Payment Amount for the relevant First Trust Payment Date.			
(iii) following the occurrence of the Early Amortization Event, an amount necessary for the payment to the Trustee of the Second Trust of the remaining principal balance of the Asset Backed Loan to the First Trust.			
(i) an amount necessary for the payment to the Trustee of the First Trust of any Indemnified Amounts which are not compensated by the Trustor of the First Trust	less	0 JPY	285,496,969 JPY
(j) an amount necessary for the payment to the Subordinated Beneficiary of the Subordinated Beneficial Principal Payment Amount for the relevant First Trust Payment Date.	less	264,375,411 JPY	21,121,558 JPY
(k) (i) prior to the expiration of the Revolving Period, then (x) if a transfer is made under (j) above, such remaining amount will be transferred to the Expenses Distribution Ledger for payment to the Subordinated Beneficiary as a payment of earnings on the Subordinated Beneficial Interest, and such payment shall be made on the First Trust Payment Date immediately following such Trust Calculation Date or (y) if no transfer is made under (j) above, such remaining amount will be carried forward to the next Trust Calculation Date.	less	21,121,558 JPY	0 JPY
(ii) following the expiration of the Revolving Period and prior to the occurrence of an Early Amortization Event, then such remaining amount will be transferred to the Expenses Distribution Ledger for payment to the Subordinated Beneficiary as a payment of earnings on the Subordinated Beneficial Interest, and such payment shall be made on the First Trust Payment Date immediately following such Trust Calculation Date.			
(iii) following the occurrence of an Early Amortization Event, the remaining amount in the Trust Collection Ledger will be carried forward to the next Trust Calculation Date.			

Credit Enhancement
Subordinated Principal Balance as of the relevant First Trust Payment Date

	Percentage of Aggregate Discounted Principal Balance	Value
(i) the aggregate amount of the Discounted Principal Balance of all Auto Loan Receivables outstanding		27,025,011,548 JPY
(ii) Asset Backed Loan Principal Balance on the relevant First Trust Payment Date		23,917,135,219 JPY
Overcollateralization (= (i) - (ii))	11.50 %	3,107,876,329 JPY
Trust Collection Ledger which is carried over from the immediately preceding Trust Calculation Date	0.00 %	0 JPY
The amount in the Cash Collateral Ledger	1.28 %	345,000,000 JPY
Subordinated Principal Balance	12.78 %	3,452,876,329 JPY

Trust Management Account (TMA)

	in JPY	+/-	in JPY (previous)
Initial Balance on Cash Entrustment Date	345,000,000 JPY		
Outstanding Balance on First Trust Payment Date	345,000,000 JPY	0 JPY	345,000,000 JPY
(a) Expenses Distribution Ledger	0 JPY	0 JPY	0 JPY
(b) Trust Collection Ledger	0 JPY	0 JPY	0 JPY
(c) Cash Collateral Ledger	345,000,000 JPY	0 JPY	345,000,000 JPY
Cash Collateral Ledger Target Balance	345,000,000 JPY		

Calculation of Credit Enhancement

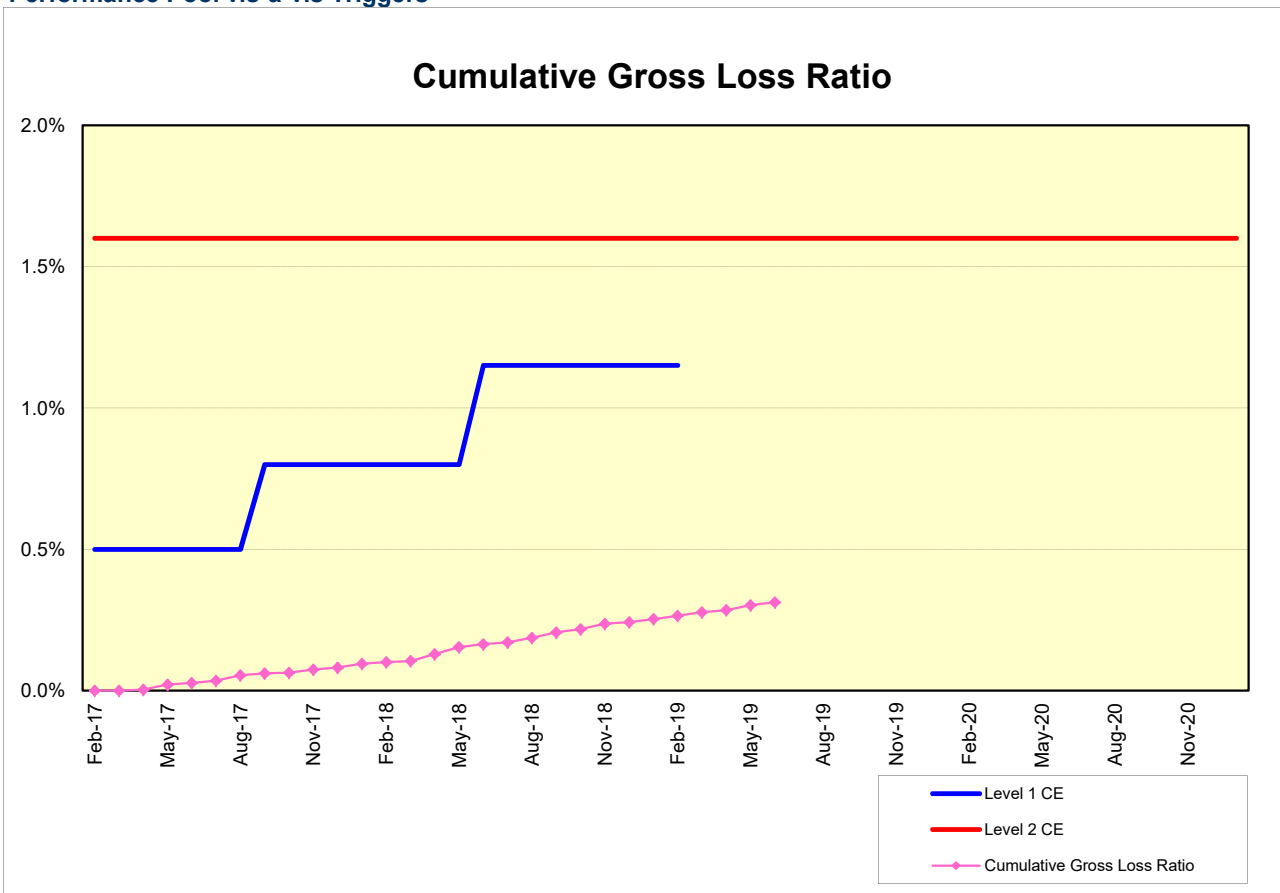
Driver Japan six's Credit Enhancement consists of the items listed above in the Subordinated Principal Balance as of the relevant date of determination (immediately following the First Trust Payment Date). The result provides an absolute value, which will be applied to the (amortized) Aggregate Discounted Principal Balance as of the end of the relevant date.

The transaction has a Revolving Period of 12 months until February 2018.

Asset Backed Loan Overcollateralization Percentage is (i) prior to the expiration of the Revolving Period, 8.5%, and (ii) following the expiration of the Revolving Period, 11.5%; provided, in each case no Credit Enhancement Increase Condition shall be in effect. After a Level 1 Credit Enhancement Increase Condition in effect, 17% and after a Level 2 Credit Enhancement Increase Condition is in effect, 100%.

Cumulative Gross Loss & Cumulative Repurchased Receivables

Performance Pool vis-a-vis Triggers



Cumulative Repurchased Receivables

	Number of Contracts	Repurchase Price
Beginning of Period	0	0 JPY
Repurchased Receivables	0	0 JPY
End of Period	0	0 JPY

Defaulted and Delinquent Contracts

Information of Delinquencies and Defaults

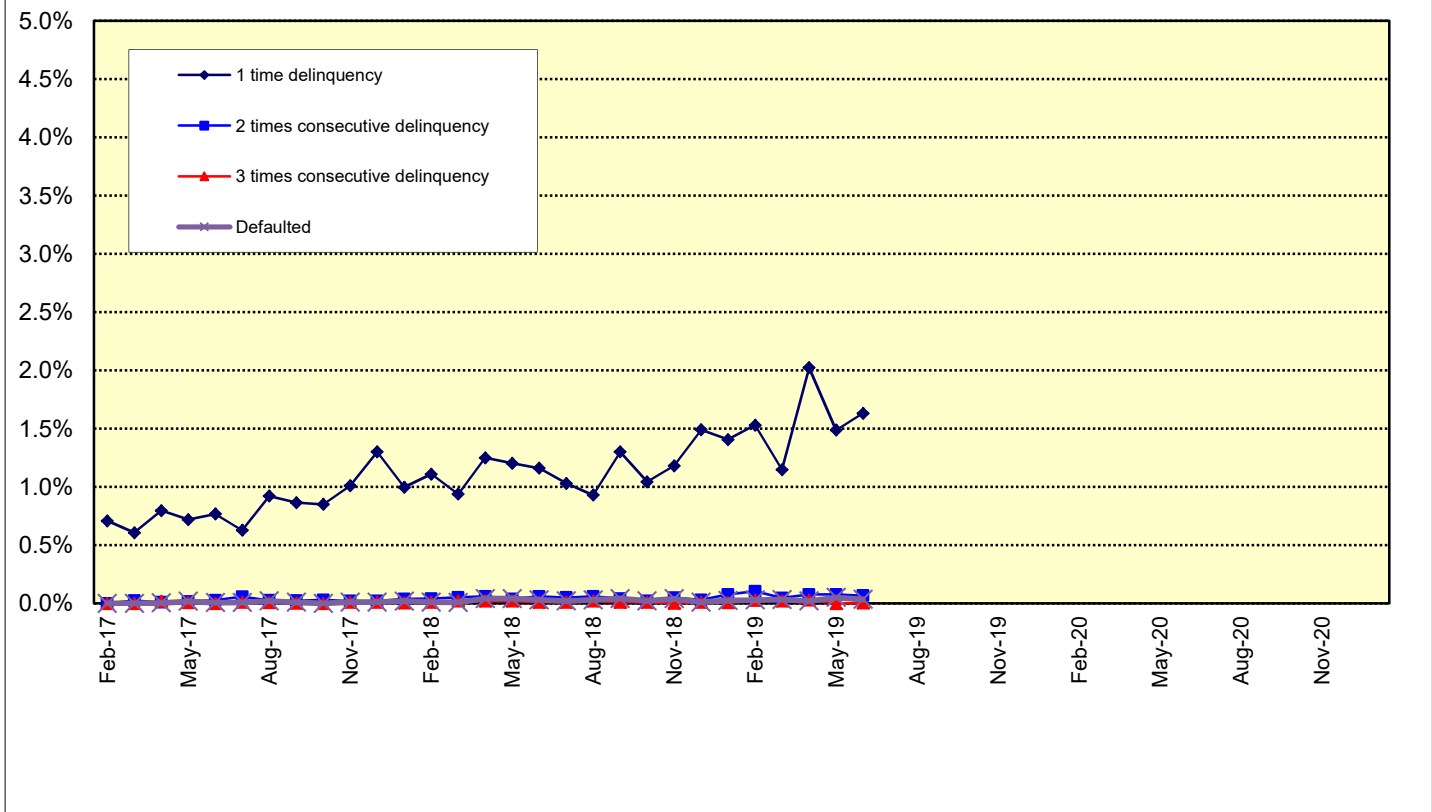
Current Reporting Period	Number of Contracts	Percentage of Contracts (*)	Outstanding Discounted Principal Balance	Percentage of Principal Balance (*)	Outstanding Nominal Balance	Percentage of Nominal Balance (*)
Delinquent	284	1.44 %	459,943,167 JPY	1.57 %	475,226,100 JPY	1.58 %
Default	4	0.02 %	9,711,055 JPY	0.03 %	9,744,124 JPY	0.03 %

(*) Based on the previous EoP

Delinquency Profile (Information Purpose Only)

Days in Arrears	Number of Contracts	Percentage of Contracts	Outstanding Discounted Principal Balance	Percentage of Principal Balance	Outstanding Nominal Balance	Percentage of Nominal Balance
1	274	1.47 %	440,979,349 JPY	1.63 %	455,468,700 JPY	1.64 %
2	9	0.05 %	18,016,072 JPY	0.07 %	18,778,400 JPY	0.07 %
3	1	0.01 %	947,746 JPY	0.00 %	979,000 JPY	0.00 %
Total	284	1.52 %	459,943,167 JPY	1.70 %	475,226,100 JPY	1.71 %

Delinquent / Defaulted (Gross Loss) Ratio



Run Out Schedule

ROS on the previous EoP on 2019/06/10

Next Payment Month	Number of Contracts	ABS Outstanding Principal	ABS Outstanding Interest	Outstanding Installment	ABS Remaining Principal	ABS Remaining Interest	ABS Remaining Installment
05.2019	19,664	29,323,928,172 JPY	813,804,428 JPY	30,137,732,600 JPY	0 JPY	0 JPY	0 JPY
06.2019	19,664	27,670,912,213 JPY	761,226,787 JPY	28,432,139,000 JPY	1,653,015,959 JPY	52,577,641 JPY	1,705,593,600 JPY
07.2019	19,020	26,155,486,474 JPY	711,447,326 JPY	26,866,933,800 JPY	1,515,425,739 JPY	49,779,461 JPY	1,565,205,200 JPY
08.2019	18,513	24,894,523,494 JPY	664,283,206 JPY	25,558,806,700 JPY	1,260,962,980 JPY	47,164,120 JPY	1,308,127,100 JPY
09.2019	17,938	23,333,119,394 JPY	619,182,006 JPY	23,952,301,400 JPY	1,561,404,100 JPY	45,101,200 JPY	1,606,505,300 JPY
10.2019	17,091	22,184,709,435 JPY	576,503,365 JPY	22,761,212,800 JPY	1,148,409,959 JPY	42,678,641 JPY	1,191,088,600 JPY
11.2019	16,527	20,708,491,232 JPY	535,700,368 JPY	21,244,191,600 JPY	1,476,218,203 JPY	40,802,997 JPY	1,517,021,200 JPY
12.2019	15,761	19,282,839,684 JPY	497,144,616 JPY	19,779,984,300 JPY	1,425,651,548 JPY	38,555,752 JPY	1,464,207,300 JPY
01.2020	15,326	18,330,405,315 JPY	461,094,985 JPY	18,791,500,300 JPY	952,434,369 JPY	36,049,631 JPY	988,484,000 JPY
02.2020	14,970	17,436,797,012 JPY	426,725,488 JPY	17,863,522,500 JPY	893,608,303 JPY	34,369,497 JPY	927,977,800 JPY
03.2020	14,459	16,358,687,608 JPY	393,914,292 JPY	16,752,601,900 JPY	1,078,109,404 JPY	32,811,196 JPY	1,110,920,600 JPY
04.2020	13,775	15,694,966,096 JPY	362,869,204 JPY	16,057,835,300 JPY	663,721,512 JPY	31,045,088 JPY	694,766,600 JPY
05.2020	13,541	14,966,752,251 JPY	333,017,349 JPY	15,299,769,600 JPY	728,213,845 JPY	29,851,855 JPY	758,065,700 JPY
06.2020	13,181	14,038,157,401 JPY	304,448,099 JPY	14,342,605,500 JPY	928,594,850 JPY	28,569,250 JPY	957,164,100 JPY
07.2020	12,798	13,208,571,700 JPY	277,581,200 JPY	13,486,152,900 JPY	829,585,701 JPY	26,866,899 JPY	856,452,600 JPY
08.2020	12,519	12,511,363,182 JPY	252,313,218 JPY	12,763,676,400 JPY	697,208,518 JPY	25,267,982 JPY	722,476,500 JPY
09.2020	12,173	11,886,932,989 JPY	228,325,911 JPY	12,115,258,900 JPY	624,430,193 JPY	23,987,307 JPY	648,417,500 JPY
10.2020	11,787	11,380,280,189 JPY	205,507,711 JPY	11,585,787,900 JPY	506,652,800 JPY	22,818,200 JPY	529,471,000 JPY
11.2020	11,547	10,887,821,280 JPY	183,693,020 JPY	11,071,514,300 JPY	492,458,909 JPY	21,814,691 JPY	514,273,600 JPY
12.2020	11,284	10,044,979,724 JPY	162,847,476 JPY	10,207,827,200 JPY	842,841,556 JPY	20,845,544 JPY	863,687,100 JPY
01.2021	10,968	9,386,323,853 JPY	143,681,747 JPY	9,530,005,600 JPY	658,655,871 JPY	19,165,729 JPY	677,821,600 JPY
02.2021	10,542	8,684,231,376 JPY	125,762,324 JPY	8,809,993,700 JPY	702,092,477 JPY	17,919,423 JPY	720,011,900 JPY
03.2021	9,899	7,882,049,834 JPY	109,165,666 JPY	7,991,215,500 JPY	802,181,542 JPY	16,596,658 JPY	818,778,200 JPY
04.2021	9,000	7,375,474,608 JPY	94,056,892 JPY	7,469,531,500 JPY	506,575,226 JPY	15,108,774 JPY	521,684,600 JPY
05.2021	8,544	6,804,946,170 JPY	79,958,930 JPY	6,884,905,100 JPY	570,528,438 JPY	14,097,962 JPY	584,626,400 JPY
06.2021	7,916	6,104,320,344 JPY	66,975,756 JPY	6,171,296,100 JPY	700,625,826 JPY	12,983,174 JPY	713,609,000 JPY
07.2021	7,252	5,318,389,848 JPY	55,399,152 JPY	5,373,789,000 JPY	785,930,496 JPY	11,576,604 JPY	797,507,100 JPY
08.2021	6,547	4,624,886,266 JPY	45,329,634 JPY	4,670,215,900 JPY	693,503,582 JPY	10,069,518 JPY	703,573,100 JPY
09.2021	5,752	3,705,898,662 JPY	36,524,038 JPY	3,742,422,700 JPY	918,987,604 JPY	8,805,596 JPY	927,793,200 JPY
10.2021	4,641	3,118,428,176 JPY	29,436,524 JPY	3,147,864,700 JPY	587,470,486 JPY	7,087,514 JPY	594,558,000 JPY
11.2021	3,965	2,383,219,632 JPY	23,437,368 JPY	2,406,657,000 JPY	735,208,544 JPY	5,999,156 JPY	741,207,700 JPY
12.2021	3,051	1,980,105,187 JPY	18,771,513 JPY	1,998,876,700 JPY	403,114,445 JPY	4,665,855 JPY	407,780,300 JPY
01.2022	2,726	1,694,821,007 JPY	14,884,793 JPY	1,709,705,800 JPY	285,284,180 JPY	3,886,720 JPY	289,170,900 JPY
02.2022	2,447	1,404,615,192 JPY	11,560,408 JPY	1,416,175,600 JPY	290,205,815 JPY	3,324,385 JPY	293,530,200 JPY
03.2022	2,118	1,010,073,254 JPY	8,795,046 JPY	1,018,868,300 JPY	394,541,938 JPY	2,765,362 JPY	397,307,300 JPY
04.2022	1,579	836,555,769 JPY	6,738,131 JPY	843,293,900 JPY	173,517,485 JPY	2,056,915 JPY	175,574,400 JPY
05.2022	1,348	654,577,194 JPY	5,014,606 JPY	659,591,800 JPY	181,978,575 JPY	1,723,525 JPY	183,702,100 JPY
06.2022	1,082	465,008,186 JPY	3,625,514 JPY	468,633,700 JPY	189,569,008 JPY	1,389,092 JPY	190,958,100 JPY
07.2022	813	336,740,210 JPY	2,601,890 JPY	339,342,100 JPY	128,267,976 JPY	1,023,624 JPY	129,291,600 JPY
08.2022	652	244,653,452 JPY	1,842,248 JPY	246,495,700 JPY	92,086,758 JPY	759,642 JPY	92,846,400 JPY
09.2022	466	138,942,684 JPY	1,272,216 JPY	140,214,900 JPY	105,710,768 JPY	570,032 JPY	106,280,800 JPY
10.2022	298	74,992,604 JPY	922,196 JPY	75,914,800 JPY	63,950,080 JPY	350,020 JPY	64,300,100 JPY
11.2022	202	45,624,563 JPY	721,137 JPY	46,345,700 JPY	29,368,041 JPY	201,059 JPY	29,569,100 JPY
12.2022	152	35,269,276 JPY	586,024 JPY	35,855,300 JPY	10,355,287 JPY	135,113 JPY	10,490,400 JPY
01.2023	131	28,657,766 JPY	480,934 JPY	29,138,700 JPY	6,611,510 JPY	105,090 JPY	6,716,600 JPY
02.2023	118	24,104,093 JPY	394,907 JPY	24,499,000 JPY	4,553,673 JPY	86,027 JPY	4,639,700 JPY
03.2023	102	20,156,170 JPY	322,030 JPY	20,478,200 JPY	3,947,923 JPY	72,877 JPY	4,020,800 JPY
04.2023	81	16,957,165 JPY	260,635 JPY	17,217,800 JPY	3,199,005 JPY	61,395 JPY	3,260,400 JPY
05.2023	73	14,031,849 JPY	208,751 JPY	14,240,600 JPY	2,925,316 JPY	51,884 JPY	2,977,200 JPY
06.2023	56	11,073,113 JPY	165,587 JPY	11,238,700 JPY	2,958,736 JPY	43,164 JPY	3,001,900 JPY
07.2023	43	8,262,108 JPY	130,992 JPY	8,393,100 JPY	2,811,005 JPY	34,595 JPY	2,845,600 JPY
08.2023	37	6,390,007 JPY	104,993 JPY	6,495,000 JPY	1,872,101 JPY	25,999 JPY	1,898,100 JPY
09.2023	30	5,188,896 JPY	84,804 JPY	5,273,700 JPY	1,201,111 JPY	20,189 JPY	1,221,300 JPY
10.2023	21	4,300,381 JPY	68,319 JPY	4,368,700 JPY	888,515 JPY	16,485 JPY	905,000 JPY
11.2023	11	3,839,479 JPY	54,621 JPY	3,894,100 JPY	460,902 JPY	13,698 JPY	474,600 JPY
12.2023	10	2,815,308 JPY	42,392 JPY	2,857,700 JPY	1,024,171 JPY	12,229 JPY	1,036,400 JPY
01.2024	9	2,287,675 JPY	33,425 JPY	2,321,100 JPY	527,633 JPY	8,967 JPY	536,600 JPY
02.2024	8	1,952,261 JPY	26,139 JPY	1,978,400 JPY	335,414 JPY	7,286 JPY	342,700 JPY
03.2024	7	1,670,980 JPY	19,920 JPY	1,690,900 JPY	281,281 JPY	6,219 JPY	287,500 JPY
04.2024	6	1,442,602 JPY	14,598 JPY	1,457,200 JPY	228,378 JPY	5,322 JPY	233,700 JPY
05.2024	5	1,264,097 JPY	10,003 JPY	1,274,100 JPY	178,505 JPY	4,595 JPY	183,100 JPY
06.2024	5	1,085,024 JPY	5,976 JPY	1,091,000 JPY	179,073 JPY	4,027 JPY	183,100 JPY
07.2024	5	415,380 JPY	2,520 JPY	417,900 JPY	669,644 JPY	3,456 JPY	673,100 JPY
08.2024	4	263,803 JPY	1,197 JPY	265,000 JPY	151,577 JPY	1,323 JPY	152,900 JPY
09.2024	4	111,744 JPY	356 JPY	112,100 JPY	152,059 JPY	841 JPY	152,900 JPY
10.2024	3	0 JPY	0 JPY	0 JPY	111,744 JPY	356 JPY	112,100 JPY

Run Out Schedule

ROS on the relevant EoP on 2019/07/10

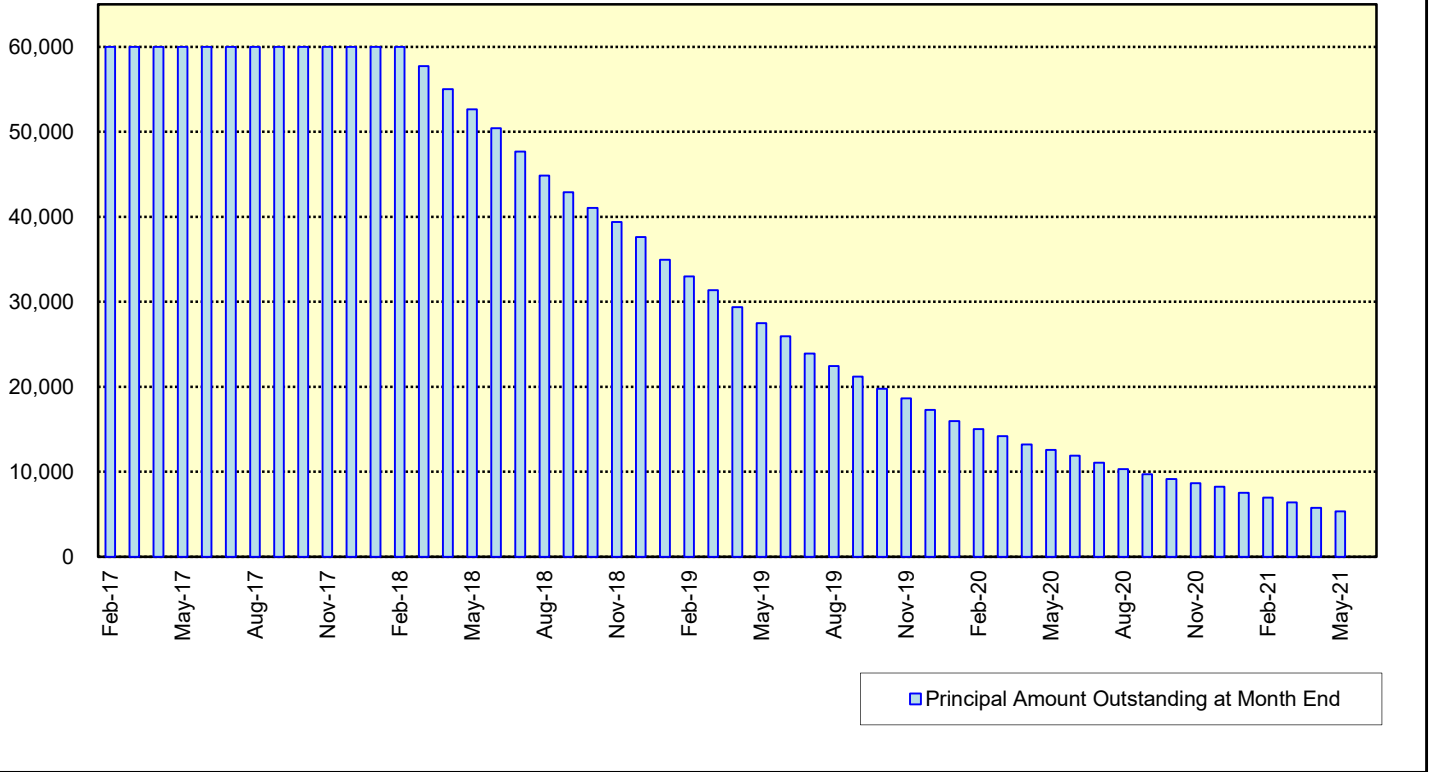
Next Payment Month	Number of Contracts	ABS Outstanding Principal	ABS Outstanding Interest	Outstanding Installment	ABS Remaining Principal	ABS Remaining Interest	ABS Remaining Installment
06.2019	18,640	27,025,011,548 JPY	747,686,552 JPY	27,772,698,100 JPY	0 JPY	0 JPY	0 JPY
07.2019	18,640	25,584,540,099 JPY	699,012,201 JPY	26,283,552,300 JPY	1,440,471,449 JPY	48,674,351 JPY	1,489,145,800 JPY
08.2019	18,166	24,359,764,968 JPY	652,838,132 JPY	25,012,603,100 JPY	1,224,775,131 JPY	46,174,069 JPY	1,270,949,200 JPY
09.2019	17,608	22,876,215,790 JPY	608,673,710 JPY	23,484,889,500 JPY	1,483,549,178 JPY	44,164,422 JPY	1,527,713,600 JPY
10.2019	16,798	21,771,412,291 JPY	566,824,209 JPY	22,338,236,500 JPY	1,104,803,499 JPY	41,849,501 JPY	1,146,653,000 JPY
11.2019	16,256	20,343,527,525 JPY	526,784,975 JPY	20,870,312,500 JPY	1,427,884,766 JPY	40,039,234 JPY	1,467,924,000 JPY
12.2019	15,511	18,947,978,811 JPY	488,925,289 JPY	19,436,904,100 JPY	1,395,548,714 JPY	37,859,686 JPY	1,433,408,400 JPY
01.2020	15,083	18,009,909,684 JPY	453,516,316 JPY	18,463,426,000 JPY	938,069,127 JPY	35,408,973 JPY	973,478,100 JPY
02.2020	14,730	17,139,525,572 JPY	419,760,628 JPY	17,559,286,200 JPY	870,384,112 JPY	33,755,688 JPY	904,139,800 JPY
03.2020	14,229	16,077,766,630 JPY	387,522,570 JPY	16,465,289,200 JPY	1,061,758,942 JPY	32,238,058 JPY	1,093,997,000 JPY
04.2020	13,554	15,426,434,018 JPY	357,022,982 JPY	15,783,457,000 JPY	651,332,612 JPY	30,499,588 JPY	681,832,200 JPY
05.2020	13,325	14,720,106,432 JPY	327,691,668 JPY	15,047,798,100 JPY	706,327,586 JPY	29,331,314 JPY	735,658,900 JPY
06.2020	12,978	13,806,139,877 JPY	299,609,123 JPY	14,105,749,000 JPY	913,966,555 JPY	28,082,545 JPY	942,049,100 JPY
07.2020	12,603	12,989,385,070 JPY	273,201,930 JPY	13,262,587,000 JPY	816,754,807 JPY	26,407,193 JPY	843,162,000 JPY
08.2020	12,326	12,301,496,246 JPY	248,366,254 JPY	12,549,862,500 JPY	687,888,824 JPY	24,835,676 JPY	712,724,500 JPY
09.2020	11,983	11,687,126,431 JPY	224,792,869 JPY	11,911,919,300 JPY	614,369,815 JPY	23,573,385 JPY	637,943,200 JPY
10.2020	11,602	11,189,825,525 JPY	202,370,275 JPY	11,392,195,800 JPY	497,300,906 JPY	22,422,594 JPY	519,723,500 JPY
11.2020	11,366	10,707,153,754 JPY	180,931,346 JPY	10,888,085,100 JPY	482,671,771 JPY	21,438,929 JPY	504,110,700 JPY
12.2020	11,107	9,879,838,197 JPY	160,440,003 JPY	10,040,278,200 JPY	827,315,557 JPY	20,491,343 JPY	847,860,900 JPY
01.2021	10,796	9,230,851,723 JPY	141,596,177 JPY	9,372,447,900 JPY	648,986,474 JPY	18,843,826 JPY	667,830,300 JPY
02.2021	10,375	8,544,143,757 JPY	123,978,743 JPY	8,665,122,500 JPY	689,707,966 JPY	17,617,434 JPY	707,325,400 JPY
03.2021	9,745	7,748,203,184 JPY	107,660,616 JPY	7,855,863,800 JPY	792,940,573 JPY	16,318,127 JPY	809,258,700 JPY
04.2021	8,851	7,251,343,629 JPY	92,812,771 JPY	7,344,156,400 JPY	496,859,555 JPY	14,847,845 JPY	511,707,400 JPY
05.2021	8,404	6,689,814,029 JPY	78,953,271 JPY	6,768,767,300 JPY	561,529,600 JPY	13,859,500 JPY	575,389,100 JPY
06.2021	7,783	6,008,016,832 JPY	66,187,668 JPY	6,074,204,500 JPY	681,797,197 JPY	12,765,603 JPY	694,562,800 JPY
07.2021	7,139	5,244,350,014 JPY	54,786,286 JPY	5,299,136,300 JPY	763,666,818 JPY	11,401,382 JPY	775,068,200 JPY
08.2021	6,455	4,559,727,327 JPY	44,849,573 JPY	4,604,576,900 JPY	684,622,687 JPY	9,936,713 JPY	694,559,400 JPY
09.2021	5,669	3,655,376,263 JPY	36,160,437 JPY	3,691,536,700 JPY	904,351,064 JPY	8,689,136 JPY	913,040,200 JPY
10.2021	4,576	3,077,597,922 JPY	29,161,978 JPY	3,106,759,900 JPY	577,778,341 JPY	6,998,459 JPY	584,776,800 JPY
11.2021	3,911	2,353,088,556 JPY	23,232,444 JPY	2,376,321,000 JPY	724,509,366 JPY	5,929,534 JPY	730,438,900 JPY
12.2021	3,010	1,956,823,531 JPY	18,619,269 JPY	1,975,442,800 JPY	396,265,025 JPY	4,613,175 JPY	400,878,200 JPY
01.2022	2,691	1,677,295,714 JPY	14,774,786 JPY	1,692,070,500 JPY	279,527,817 JPY	3,844,483 JPY	283,372,300 JPY
02.2022	2,418	1,394,921,535 JPY	11,481,765 JPY	1,406,403,300 JPY	282,374,179 JPY	3,293,021 JPY	285,667,200 JPY
03.2022	2,096	1,001,904,869 JPY	8,733,631 JPY	1,010,638,500 JPY	393,016,666 JPY	2,748,134 JPY	395,764,800 JPY
04.2022	1,560	829,767,723 JPY	6,691,177 JPY	836,458,900 JPY	172,137,146 JPY	2,042,454 JPY	174,179,600 JPY
05.2022	1,334	648,758,605 JPY	4,979,895 JPY	653,738,500 JPY	181,009,118 JPY	1,711,282 JPY	182,720,400 JPY
06.2022	1,071	461,165,458 JPY	3,601,342 JPY	464,766,800 JPY	187,593,147 JPY	1,378,553 JPY	188,971,700 JPY
07.2022	804	334,322,098 JPY	2,584,802 JPY	336,906,900 JPY	126,843,360 JPY	1,016,540 JPY	127,859,900 JPY
08.2022	644	243,016,949 JPY	1,829,851 JPY	244,846,800 JPY	91,305,149 JPY	754,951 JPY	92,060,100 JPY
09.2022	460	138,480,689 JPY	1,263,211 JPY	139,743,900 JPY	104,536,260 JPY	566,640 JPY	105,102,900 JPY
10.2022	296	74,559,205 JPY	914,595 JPY	75,473,800 JPY	63,921,484 JPY	348,616 JPY	64,270,100 JPY
11.2022	200	45,219,845 JPY	714,855 JPY	45,934,700 JPY	29,339,360 JPY	199,740 JPY	29,539,100 JPY
12.2022	150	34,893,324 JPY	580,976 JPY	35,474,300 JPY	10,326,521 JPY	133,879 JPY	10,460,400 JPY
01.2023	129	28,380,664 JPY	477,036 JPY	28,857,700 JPY	6,512,660 JPY	103,940 JPY	6,616,600 JPY
02.2023	116	23,856,150 JPY	391,850 JPY	24,248,000 JPY	4,524,514 JPY	85,186 JPY	4,609,700 JPY
03.2023	100	19,937,471 JPY	319,729 JPY	20,257,200 JPY	3,918,679 JPY	72,121 JPY	3,990,800 JPY
04.2023	79	16,767,797 JPY	259,003 JPY	17,026,800 JPY	3,169,674 JPY	60,726 JPY	3,230,400 JPY
05.2023	71	13,871,899 JPY	207,701 JPY	14,079,600 JPY	2,895,898 JPY	51,302 JPY	2,947,200 JPY
06.2023	54	10,942,668 JPY	165,032 JPY	11,107,700 JPY	2,929,231 JPY	42,669 JPY	2,971,900 JPY
07.2023	41	8,231,255 JPY	130,845 JPY	8,362,100 JPY	2,711,413 JPY	34,187 JPY	2,745,600 JPY
08.2023	36	6,374,556 JPY	104,944 JPY	6,479,500 JPY	1,856,699 JPY	25,901 JPY	1,882,600 JPY
09.2023	29	5,188,896 JPY	84,804 JPY	5,273,700 JPY	1,185,660 JPY	20,140 JPY	1,205,800 JPY
10.2023	21	4,300,381 JPY	68,319 JPY	4,368,700 JPY	888,515 JPY	16,485 JPY	905,000 JPY
11.2023	11	3,839,479 JPY	54,621 JPY	3,894,100 JPY	460,902 JPY	13,698 JPY	474,600 JPY
12.2023	10	2,815,308 JPY	42,392 JPY	2,857,700 JPY	1,024,171 JPY	12,229 JPY	1,036,400 JPY
01.2024	9	2,287,675 JPY	33,425 JPY	2,321,100 JPY	527,633 JPY	8,967 JPY	536,600 JPY
02.2024	8	1,952,261 JPY	26,139 JPY	1,978,400 JPY	335,414 JPY	7,286 JPY	342,700 JPY
03.2024	7	1,670,980 JPY	19,920 JPY	1,690,900 JPY	281,281 JPY	6,219 JPY	287,500 JPY
04.2024	6	1,442,602 JPY	14,598 JPY	1,457,200 JPY	228,378 JPY	5,322 JPY	233,700 JPY
05.2024	5	1,264,097 JPY	10,003 JPY	1,274,100 JPY	178,505 JPY	4,595 JPY	183,100 JPY
06.2024	5	1,085,024 JPY	5,976 JPY	1,091,000 JPY	179,073 JPY	4,027 JPY	183,100 JPY
07.2024	5	415,380 JPY	2,520 JPY	417,900 JPY	669,644 JPY	3,456 JPY	673,100 JPY
08.2024	4	263,803 JPY	1,197 JPY	265,000 JPY	151,577 JPY	1,323 JPY	152,900 JPY
09.2024	4	111,744 JPY	356 JPY	112,100 JPY	152,059 JPY	841 JPY	152,900 JPY
10.2024	3	0 JPY	0 JPY	0 JPY	111,744 JPY	356 JPY	112,100 JPY

Expected Amortisation

Expected Amortization to the Second Trust

JPY mil.

Assuming a Clean-Up Call at 10% of the Initial Outstanding Balance, annual prepayments of 10% and 0% defaults.



Distribution by Sub-Servicer

Sub-Servicer	Number of Loans	Percentage of Loans	Outstanding Principal Balance	Percentage of Balance
Cedyna	10,766	57.76 %	15,833,622,540 JPY	58.59 %
Jaccs	7,874	42.24 %	11,191,389,008 JPY	41.41 %
Total	18,640	100.00 %	27,025,011,548 JPY	100.00 %

Distribution by Brand

Make	Number of Loans	Percentage of Loans	Outstanding Discounted Principal Balance	Percentage of Balance
VW	12,705	68.16 %	16,326,236,482 JPY	60.41 %
Audi	5,923	31.78 %	10,670,658,360 JPY	39.48 %
Bentley	5	0.03 %	24,472,201 JPY	0.09 %
Lamborghini	0	0.00 %	0 JPY	0.00 %
Other	7	0.04 %	3,644,505 JPY	0.01 %
Total	18,640	100.00 %	27,025,011,548 JPY	100.00 %

Distribution by New and Used
Distribution by New and Used

New or Used	Number of Loans	Percentage of Loans	Outstanding Discounted Principal Balance	Percentage of Balance
New	12,129	65.07 %	20,610,384,973 JPY	76.26 %
Used	5,970	32.03 %	6,219,963,268 JPY	23.02 %
Used (Prolonged)	541	2.90 %	194,663,307 JPY	0.72 %
Total	18,640	100.00 %	27,025,011,548 JPY	100.00 %

Distribution by Brand New and Used

New or Used	Number of Loans	Percentage of Loans	Outstanding Discounted Principal Balance	Percentage of Balance
VW New	9,075	48.69 %	13,548,319,685 JPY	50.13 %
VW Used	3,268	17.53 %	2,690,337,688 JPY	9.95 %
VW Used (Prolonged)	362	1.94 %	87,579,109 JPY	0.32 %
Audi New	3,051	16.37 %	7,050,327,031 JPY	26.09 %
Audi Used	2,693	14.45 %	3,513,247,131 JPY	13.00 %
Audi Used (Prolonged)	179	0.96 %	107,084,198 JPY	0.40 %
Other	12	0.06 %	28,116,706 JPY	0.10 %
Total	18,640	100.00 %	27,025,011,548 JPY	100.00 %

Distribution by Product Type

Loan Type List

Loan Type	Description
100	Volkswagen Owner's Plan
100	Audi Owner's Plan
100	Lamborghini Auto Loan
100	Bentley Auto Loan
101	Twin Loan
105	Refinanced Volkswagen Solutions
106	Refinanced Volkswagen Das Welt Auto with refinance option *
106	Refinanced Audi S-Loan/ S-Loan Plus
106	Refinanced Lamborghini Hyper Premium Plan
106	Refinanced Bentley My Flying B
140	Volkswagen Solutions
150	Volkswagen Das Welt Auto with refinance option **
150	Audi S-Loan
150	Lamborghini Hyper Premium Plan
150	Bentley My Flying B
151	Audi S-Loan Plus

(*) The name was changed from "Refinanced Volkswagen GUC with refinance option" effective from 1 February 2012.

No other changes were made to auto loan agreements.

(**) The name was changed from "Volkswagen GUC with refinance option" effective from 1 February 2012.

No other changes were made to auto loan agreements.

Product Type

Loan Type	Number of Loans	Percentage of Loans	Outstanding Discounted Principal Balance	Percentage of Balance
100	2,838	15.23 %	2,495,106,218 JPY	9.23 %
101	0	0.00 %	0 JPY	0.00 %
105	360	1.93 %	86,907,095 JPY	0.32 %
106	181	0.97 %	107,756,212 JPY	0.40 %
140-VFJ	1,335	7.16 %	2,015,219,375 JPY	7.46 %
140-Dealer	7,101	38.10 %	10,922,287,671 JPY	40.42 %
150	6,606	35.44 %	10,931,682,952 JPY	40.45 %
151	219	1.17 %	466,052,025 JPY	1.72 %
Total	18,640	100.00 %	27,025,011,548 JPY	100.00 %

Credit Type

Credit Type	Number of Loans	Percentage of Loans	Outstanding Discounted Principal Balance	Percentage of Balance
Balloon Type Loan	15,261	81.87 %	24,335,242,023 JPY	90.05 %
Equal Instalment Type Loan	3,379	18.13 %	2,689,769,525 JPY	9.95 %
Total	18,640	100.00 %	27,025,011,548 JPY	100.00 %

Distribution by RV

Loan Type	Number of Loans	Percentage of Balance	Outstanding Discounted Principal Balance
100/101/105/106	3,379	9.95 %	2,689,769,525 JPY
140-VFJ (excl. balloon)		3.55 %	959,147,631 JPY
140-VFJ (balloon)		3.91 %	1,056,071,744 JPY
140-VFJ	1,335	7.46 %	2,015,219,375 JPY
140-Dealer (excl. balloon)		19.46 %	5,258,269,531 JPY
140-Dealer (balloon)		20.96 %	5,664,018,140 JPY
140-Dealer	7,101	40.42 %	10,922,287,671 JPY
150 (excl. balloon)		15.52 %	4,195,264,627 JPY
150 (balloon)		24.93 %	6,736,418,325 JPY
150	6,606	40.45 %	10,931,682,952 JPY
151 (excl. balloon)		0.26 %	70,274,144 JPY
151 (balloon)		1.46 %	395,777,881 JPY
151	219	1.72 %	466,052,025 JPY
Total	18,640	100.00 %	27,025,011,548 JPY

Type of Payment Portion	Percentage of Balance	Outstanding Discounted Principal Balance
Monthly Installment Portion	48.74 %	13,172,725,458 JPY
Balloon Portion	51.26 %	13,852,286,090 JPY
Total	100.00 %	27,025,011,548 JPY

Distribution by Brand New and Used
Audi

New or Used	Number of Loans	Percentage of Loans	Outstanding Discounted Principal Balance	Percentage of Balance
New	3,051	51.51 %	7,050,327,031 JPY	66.07 %
Used	2,872	48.49 %	3,620,331,329 JPY	33.93 %
Total	5,923	100.00 %	10,670,658,360 JPY	100.00 %

Bentley

New or Used	Number of Loans	Percentage of Loans	Outstanding Discounted Principal Balance	Percentage of Balance
New	3	60.00 %	11,738,257 JPY	47.97 %
Used	2	40.00 %	12,733,944 JPY	52.03 %
Total	5	100.00 %	24,472,201 JPY	100.00 %

Lamborghini

New or Used	Number of Loans	Percentage of Loans	Outstanding Discounted Principal Balance	Percentage of Balance
New	0	0.00 %	0 JPY	0.00 %
Used	0	0.00 %	0 JPY	0.00 %
Total	0	0.00 %	0 JPY	0.00 %

VW

New or Used	Number of Loans	Percentage of Loans	Outstanding Discounted Principal Balance	Percentage of Balance
New	9,075	71.43 %	13,548,319,685 JPY	82.98 %
Used	3,630	28.57 %	2,777,916,797 JPY	17.02 %
Total	12,705	100.00 %	16,326,236,482 JPY	100.00 %

OTHER

New or Used	Number of Loans	Percentage of Loans	Outstanding Discounted Principal Balance	Percentage of Balance
New	0	0.00 %	0 JPY	0.00 %
Used	7	100.00 %	3,644,505 JPY	100.00 %
Total	7	100.00 %	3,644,505 JPY	100.00 %

Distribution by Customer Type

Customer Type

Customer Type	Number of Loans	Percentage of Loans	Outstanding Discounted Principal Balance	Percentage of Balance
Retail	16,957	90.97 %	23,703,786,636 JPY	87.71 %
Corporate	1,683	9.03 %	3,321,224,912 JPY	12.29 %
Total	18,640	100.00 %	27,025,011,548 JPY	100.00 %

Distribution by Outstanding Discounted Principal Balance

Outstanding Discounted Principal Balance	Number of Loans	Percentage of Loans	Outstanding Discounted Principal Balance	Percentage of Balance
<= 500,000 JPY	2,207	11.84 %	617,554,019 JPY	2.29 %
500,001 JPY - 1,000,000 JPY	3,718	19.95 %	2,840,166,202 JPY	10.51 %
1,000,001 JPY - 1,500,000 JPY	5,080	27.25 %	6,348,616,707 JPY	23.49 %
1,500,001 JPY - 2,000,000 JPY	3,816	20.47 %	6,597,835,328 JPY	24.41 %
2,000,001 JPY - 2,500,000 JPY	1,866	10.01 %	4,120,703,183 JPY	15.25 %
2,500,001 JPY - 3,000,000 JPY	845	4.53 %	2,299,030,541 JPY	8.51 %
3,000,001 JPY - 3,500,000 JPY	504	2.70 %	1,628,265,258 JPY	6.03 %
3,500,001 JPY - 4,000,000 JPY	295	1.58 %	1,096,046,901 JPY	4.06 %
4,000,001 JPY - 4,500,000 JPY	140	0.75 %	591,024,058 JPY	2.19 %
4,500,001 JPY - 5,000,000 JPY	78	0.42 %	369,297,301 JPY	1.37 %
5,000,001 JPY - 6,000,000 JPY	69	0.37 %	370,727,287 JPY	1.37 %
6,000,001 JPY - 7,000,000 JPY	17	0.09 %	107,282,892 JPY	0.40 %
7,000,001 JPY - 8,000,000 JPY	3	0.02 %	21,945,660 JPY	0.08 %
8,000,001 JPY - 9,000,000 JPY	2	0.01 %	16,516,211 JPY	0.06 %
9,000,001 JPY - 10,000,000 JPY	0	0.00 %	0 JPY	0.00 %
>= 10,000,001 JPY	0	0.00 %	0 JPY	0.00 %
Total	18,640	100.00 %	27,025,011,548 JPY	100.00 %

Statistics

Minimum Outstanding Discounted Principal Balance	6,580 JPY
Maximum Outstanding Discounted Principal Balance	8,368,844 JPY
Average Outstanding Discounted Principal Balance	1,449,840 JPY

Distribution by Original Principal Amount

Original Principal Balance	Number of Loans	Percentage of Loans	Outstanding Discounted Principal Balance	Percentage of Balance
<= 500,000 JPY	70	0.38 %	10,911,769 JPY	0.04 %
500,001 JPY - 1,000,000 JPY	917	4.92 %	329,608,426 JPY	1.22 %
1,000,001 JPY - 1,500,000 JPY	2,019	10.83 %	1,235,918,963 JPY	4.57 %
1,500,001 JPY - 2,000,000 JPY	3,077	16.51 %	2,816,774,533 JPY	10.42 %
2,000,001 JPY - 2,500,000 JPY	3,323	17.83 %	4,021,042,670 JPY	14.88 %
2,500,001 JPY - 3,000,000 JPY	3,265	17.52 %	4,829,524,564 JPY	17.87 %
3,000,001 JPY - 3,500,000 JPY	2,184	11.72 %	3,852,588,442 JPY	14.26 %
3,500,001 JPY - 4,000,000 JPY	1,401	7.52 %	2,869,738,763 JPY	10.62 %
4,000,001 JPY - 4,500,000 JPY	734	3.94 %	1,731,471,648 JPY	6.41 %
4,500,001 JPY - 5,000,000 JPY	539	2.89 %	1,442,896,226 JPY	5.34 %
5,000,001 JPY - 6,000,000 JPY	543	2.91 %	1,649,570,332 JPY	6.10 %
6,000,001 JPY - 7,000,000 JPY	294	1.58 %	1,036,614,828 JPY	3.84 %
7,000,001 JPY - 8,000,000 JPY	126	0.68 %	489,687,243 JPY	1.81 %
8,000,001 JPY - 9,000,000 JPY	68	0.36 %	301,516,111 JPY	1.12 %
9,000,001 JPY - 10,000,000 JPY	45	0.24 %	230,879,037 JPY	0.85 %
>= 10,000,001 JPY	35	0.19 %	176,267,993 JPY	0.65 %
Total	18,640	100.00 %	27,025,011,548 JPY	100.00 %

Statistics

Minimum Original Principal Balance	210,000 JPY
Maximum Original Principal Balance	16,000,000 JPY
Average Original Principal Balance	2,730,823 JPY

Distribution by Interest Rate paid by the Obligor

Interest Rate paid by the Obligor	Number of Loans	Percentage of Loans	Outstanding Discounted Principal Balance	Percentage of Balance
< 0.900 %	341	1.83 %	708,351,372 JPY	2.62 %
0.900 % < 1.500 %	3,405	18.27 %	5,737,812,878 JPY	21.23 %
1.500 % < 2.000 %	6,988	37.49 %	10,910,359,198 JPY	40.37 %
2.000 % < 2.500 %	129	0.69 %	227,181,089 JPY	0.84 %
2.500 % < 3.000 %	4,809	25.80 %	6,487,915,087 JPY	24.01 %
3.000 % < 3.500 %	769	4.13 %	437,893,642 JPY	1.62 %
3.500 % < 4.000 %	2,173	11.66 %	2,499,847,885 JPY	9.25 %
4.000 % < 4.500 %	26	0.14 %	15,650,397 JPY	0.06 %
4.500 % < 5.000 %	0	0.00 %	0 JPY	0.00 %
5.000 % or more	0	0.00 %	0 JPY	0.00 %
Total	18,640	100.00 %	27,025,011,548 JPY	100.00 %

Statistics	
Minimum Interest Rate	0.10 %
Maximum Interest Rate	4.49 %
Weighted Average Interest Rate	2.12 %

Distribution by Original Term

Length of Original Term (months)	Number of Loans	Percentage of Loans	Outstanding Discounted Principal Balance	Percentage of Balance
6 - 12	0	0.00 %	0 JPY	0.00 %
13 - 18	0	0.00 %	0 JPY	0.00 %
19 - 24	67	0.36 %	15,365,875 JPY	0.06 %
25 - 30	18	0.10 %	4,128,216 JPY	0.02 %
31 - 36	4,663	25.02 %	7,352,347,894 JPY	27.21 %
37 - 42	50	0.27 %	15,870,546 JPY	0.06 %
43 - 48	1,128	6.05 %	932,445,432 JPY	3.45 %
49 - 54	20	0.11 %	13,452,483 JPY	0.05 %
55 - 60	11,987	64.31 %	17,718,084,586 JPY	65.56 %
61 - 66	14	0.08 %	14,422,714 JPY	0.05 %
67 - 72	547	2.93 %	689,483,385 JPY	2.55 %
73 - 84	146	0.78 %	269,410,417 JPY	1.00 %
Total	18,640	100.00 %	27,025,011,548 JPY	100.00 %

Statistics	
Minimum Original Term in months	24
Maximum Original Term in months	84
Weighted Average Original Term in months	53.57

Distribution by Remaining Term

Length of Remaining Term (months)	Number of Loans	Percentage of Loans	Outstanding Discounted Principal Balance	Percentage of Balance
<= 12	6,037	32.39 %	7,603,301,093 JPY	28.13 %
13 - 18	1,807	9.69 %	2,223,679,495 JPY	8.23 %
19 - 24	3,657	19.62 %	4,885,414,756 JPY	18.08 %
25 - 30	4,448	23.86 %	7,273,683,442 JPY	26.91 %
31 - 36	1,887	10.12 %	3,430,747,460 JPY	12.69 %
37 - 42	675	3.62 %	1,341,959,386 JPY	4.97 %
43 - 48	88	0.47 %	164,233,716 JPY	0.61 %
49 - 54	32	0.17 %	75,282,066 JPY	0.28 %
55 - 60	4	0.02 %	11,333,824 JPY	0.04 %
61 - 66	5	0.03 %	15,376,310 JPY	0.06 %
67 - 72	0	0.00 %	0 JPY	0.00 %
73 - 84	0	0.00 %	0 JPY	0.00 %
Total	18,640	100.00 %	27,025,011,548 JPY	100.00 %

Statistics	
Minimum Remaining Term in months	1
Maximum Remaining Term in months	64
Weighted Average Remaining Term in months	20.89

Distribution by Seasoning

Seasoning (months)	Number of Loans	Percentage of Loans	Outstanding Discounted Principal Balance	Percentage of Balance
<= 12	0	0.00 %	0 JPY	0.00 %
13 - 18	0	0.00 %	0 JPY	0.00 %
19 - 24	1,519	8.15 %	2,851,106,218 JPY	10.55 %
25 - 30	3,583	19.22 %	6,163,037,597 JPY	22.80 %
31 - 36	7,850	42.11 %	11,845,958,466 JPY	43.83 %
37 - 42	3,552	19.06 %	4,476,651,114 JPY	16.56 %
43 - 48	927	4.97 %	892,061,534 JPY	3.30 %
49 - 54	720	3.86 %	526,083,121 JPY	1.95 %
55 - 60	425	2.28 %	240,321,811 JPY	0.89 %
61 - 66	39	0.21 %	20,554,290 JPY	0.08 %
67 - 72	16	0.09 %	6,659,343 JPY	0.02 %
73 - 84	9	0.05 %	2,578,054 JPY	0.01 %
Total	18,640	100.00 %	27,025,011,548 JPY	100.00 %

Statistics	
Minimum Seasoning in months	19
Maximum Seasoning in months	81
Weighted Average Seasoning in months	32.68

Distribution by Type of Car
Type of Car

Type of Car	Number of Loans	Percentage of Loans	Outstanding Discounted Principal Balance	Percentage of Balance
New	12,129	65.07 %	20,610,384,973 JPY	76.26 %
Used	6,511	34.93 %	6,414,626,575 JPY	23.74 %
Total	18,640	100.00 %	27,025,011,548 JPY	100.00 %

Type of Car: Only Balloon Loans

Type of Car	Number of Loans	Percentage of Loans	Outstanding Discounted Principal Balance	Percentage of Balance
New	11,368	74.49 %	19,811,622,461 JPY	81.41 %
Used	3,893	25.51 %	4,523,619,562 JPY	18.59 %
Total	15,261	100.00 %	24,335,242,023 JPY	100.00 %

Type of Car: Only Equal Instalment Loans

Type of Car	Number of Loans	Percentage of Loans	Outstanding Discounted Principal Balance	Percentage of Balance
New	761	22.52 %	798,762,512 JPY	29.70 %
Used	2,618	77.48 %	1,891,007,013 JPY	70.30 %
Total	3,379	100.00 %	2,689,769,525 JPY	100.00 %

Distribution by Brand and Model

Make	Model	Number of Loans	Percentage of Loans	Outstanding Discounted Principal Balance	Percentage of Balance
Audi	A1	559	3.00 %	562,412,231 JPY	2.08 %
	A3	1,384	7.42 %	1,852,895,176 JPY	6.86 %
	A4	1,321	7.09 %	2,552,336,602 JPY	9.44 %
	A5	296	1.59 %	574,777,150 JPY	2.13 %
	A6	388	2.08 %	807,525,348 JPY	2.99 %
	A7	145	0.78 %	397,179,037 JPY	1.47 %
	A8	41	0.22 %	108,451,125 JPY	0.40 %
	S1	55	0.30 %	91,001,551 JPY	0.34 %
	S3	196	1.05 %	411,521,747 JPY	1.52 %
	S4	52	0.28 %	131,143,420 JPY	0.49 %
	S5	30	0.16 %	73,632,517 JPY	0.27 %
	S6	25	0.13 %	78,708,482 JPY	0.29 %
	S7	16	0.09 %	44,402,644 JPY	0.16 %
	S8	5	0.03 %	21,355,616 JPY	0.08 %
	RS3	20	0.11 %	61,600,991 JPY	0.23 %
	RS4	10	0.05 %	24,307,520 JPY	0.09 %
	RS5	10	0.05 %	32,746,605 JPY	0.12 %
	RS6	8	0.04 %	32,371,114 JPY	0.12 %
	RS7	5	0.03 %	22,390,292 JPY	0.08 %
	Q2	54	0.29 %	124,551,483 JPY	0.46 %
	Q3	465	2.49 %	762,650,417 JPY	2.82 %
	Q5	273	1.46 %	567,108,861 JPY	2.10 %
	Q7	118	0.63 %	423,360,344 JPY	1.57 %
	RSQ3	15	0.08 %	49,240,693 JPY	0.18 %
	TT	424	2.27 %	833,449,023 JPY	3.08 %
	R8	8	0.04 %	29,538,371 JPY	0.11 %
AUDI OTHERS	0	0.00 %	0 JPY	0.00 %	
Subtotal		5,923	31.78 %	10,670,658,360 JPY	39.48 %
Bentley	ARNAGE	0	0.00 %	0 JPY	0.00 %
	AZURE	0	0.00 %	0 JPY	0.00 %
	BENTAYGA	1	0.01 %	5,686,260 JPY	0.02 %
	CONTINENTAL	4	0.02 %	18,785,941 JPY	0.07 %
	FLYING SPUR	0	0.00 %	0 JPY	0.00 %
	MULSANNE	0	0.00 %	0 JPY	0.00 %
	BENTLEY	0	0.00 %	0 JPY	0.00 %
	OTHERS	0	0.00 %	0 JPY	0.00 %
Subtotal		5	0.03 %	24,472,201 JPY	0.09 %
Lamborghini	AVENTADOR	0	0.00 %	0 JPY	0.00 %
	DIABLO	0	0.00 %	0 JPY	0.00 %
	GALLARDO	0	0.00 %	0 JPY	0.00 %
	HURACÁN	0	0.00 %	0 JPY	0.00 %
	MULCIELAGO	0	0.00 %	0 JPY	0.00 %
	LAMBORGHINI	0	0.00 %	0 JPY	0.00 %
	OTHERS	0	0.00 %	0 JPY	0.00 %
Subtotal		0	0.00 %	0 JPY	0.00 %
VW	ARTEON	1	0.01 %	3,433,126 JPY	0.01 %
	BEETLE	1,301	6.98 %	1,533,945,707 JPY	5.68 %
	BORA	0	0.00 %	0 JPY	0.00 %
	EOS	0	0.00 %	0 JPY	0.00 %
	GOLF	4,951	26.56 %	6,846,963,784 JPY	25.34 %
	JETTA	5	0.03 %	980,275 JPY	0.00 %
	LUPO	1	0.01 %	1,013,052 JPY	0.00 %
	PASSAT	1,128	6.05 %	1,730,966,204 JPY	6.41 %
	POLO	2,613	14.02 %	2,632,704,012 JPY	9.74 %
	SCIROCCO	19	0.10 %	15,962,520 JPY	0.06 %
	SHARAN	424	2.27 %	646,153,965 JPY	2.39 %
	TIGUAN	428	2.30 %	737,550,166 JPY	2.73 %
	TOUAREG	42	0.23 %	79,102,284 JPY	0.29 %
	TOURAN	1,047	5.62 %	1,618,352,788 JPY	5.99 %
	UP	745	4.00 %	479,108,599 JPY	1.77 %
	VENTO	0	0.00 %	0 JPY	0.00 %
	VW OTHERS	0	0.00 %	0 JPY	0.00 %
Subtotal		12,705	68.15 %	16,326,236,482 JPY	60.40 %
Non VW Group Vehicles		7	0.04 %	3,644,505 JPY	0.01 %
Subtotal		7	0.04 %	3,644,505 JPY	0.01 %
Total		18,640	100.00 %	27,025,011,548 JPY	100.00 %

Geographic Distribution by Prefecture

Prefecture	Number of Loans	Percentage of Loans	Outstanding Discounted Principal Balance	Percentage of Balance
Tokyo	2,743	14.72 %	4,475,331,145 JPY	16.56 %
Kanagawa	1,800	9.66 %	2,703,075,024 JPY	10.00 %
Aichi	1,314	7.05 %	1,852,038,616 JPY	6.85 %
Saitama	1,228	6.59 %	1,715,084,037 JPY	6.35 %
Osaka	1,050	5.63 %	1,585,538,840 JPY	5.87 %
Chiba	860	4.61 %	1,207,136,849 JPY	4.47 %
Fukuoka	776	4.16 %	1,155,454,544 JPY	4.28 %
Hokkaido	744	3.99 %	1,115,622,582 JPY	4.13 %
Hyogo	645	3.46 %	926,751,571 JPY	3.43 %
Ibaraki	592	3.18 %	792,711,682 JPY	2.93 %
Shizuoka	551	2.96 %	789,297,748 JPY	2.92 %
Hiroshima	459	2.46 %	623,183,398 JPY	2.31 %
Tochigi	437	2.34 %	613,234,629 JPY	2.27 %
Miyagi	367	1.97 %	517,633,282 JPY	1.92 %
Gunma	418	2.24 %	517,581,237 JPY	1.92 %
Kyoto	352	1.89 %	497,323,672 JPY	1.84 %
Nagano	298	1.60 %	390,149,567 JPY	1.44 %
Gifu	264	1.42 %	361,795,747 JPY	1.34 %
Okayama	241	1.29 %	357,270,208 JPY	1.32 %
Fukushima	245	1.31 %	320,757,084 JPY	1.19 %
Mie	248	1.33 %	318,444,692 JPY	1.18 %
Yamaguchi	211	1.13 %	291,981,922 JPY	1.08 %
Niigata	227	1.22 %	278,623,901 JPY	1.03 %
Oita	174	0.93 %	234,666,164 JPY	0.87 %
Ishikawa	154	0.83 %	220,272,124 JPY	0.82 %
Kumamoto	164	0.88 %	219,885,715 JPY	0.81 %
Toyama	155	0.83 %	217,968,045 JPY	0.81 %
Nara	157	0.84 %	217,860,771 JPY	0.81 %
Yamanashi	138	0.74 %	214,684,204 JPY	0.79 %
Shiga	151	0.81 %	213,981,374 JPY	0.79 %
Kagoshima	134	0.72 %	205,692,266 JPY	0.76 %
Wakayama	129	0.69 %	197,257,144 JPY	0.73 %
Yamagata	148	0.79 %	189,867,215 JPY	0.70 %
Fukui	121	0.65 %	182,122,563 JPY	0.67 %
Miyazaki	94	0.50 %	141,626,446 JPY	0.52 %
Iwate	98	0.53 %	137,274,016 JPY	0.51 %
Nagasaki	98	0.53 %	133,191,506 JPY	0.49 %
Tokushima	89	0.48 %	131,777,668 JPY	0.49 %
Kagawa	85	0.46 %	113,803,574 JPY	0.42 %
Saga	80	0.43 %	110,458,444 JPY	0.41 %
Ehime	85	0.46 %	108,878,616 JPY	0.40 %
Shimane	63	0.34 %	97,545,493 JPY	0.36 %
Akita	64	0.34 %	88,530,214 JPY	0.33 %
Aomori	67	0.36 %	87,217,853 JPY	0.32 %
Kouchi	40	0.21 %	56,693,345 JPY	0.21 %
Tottori	52	0.28 %	55,402,065 JPY	0.21 %
Okinawa	30	0.16 %	42,332,746 JPY	0.16 %
Total	18,640	100.00 %	27,025,011,548 JPY	100.00 %

Distribution by Obligor Concentration

Distribution of Loan Contracts and Vehicles per Obligor

Contract Concentration	Number of Customers	Percentage of Customers	Number of Loans	Percentage of Loans	Outstanding Discounted Principal Balance	Percentage of Balance
1	17,960	96.68 %	17,960	96.35 %	25,916,132,851 JPY	95.90 %
2	576	3.10 %	630	3.38 %	1,009,137,785 JPY	3.73 %
3	36	0.19 %	42	0.23 %	85,845,301 JPY	0.32 %
4	5	0.03 %	8	0.04 %	13,895,611 JPY	0.05 %
5	0	0.00 %	0	0.00 %	0 JPY	0.00 %
6 - 10	0	0.00 %	0	0.00 %	0 JPY	0.00 %
11 or more	0	0.00 %	0	0.00 %	0 JPY	0.00 %
Total	18,577	100.00 %	18,640	100.00 %	27,025,011,548 JPY	100.00 %

Top 20 Obligor

Number	Number of Contracts	Outstanding Discounted Principal Balance	Percentage of Balance
1	2	11,413,940 JPY	0.04 %
2	1	8,368,844 JPY	0.03 %
3	1	8,147,367 JPY	0.03 %
4	1	7,409,023 JPY	0.03 %
5	1	7,403,332 JPY	0.03 %
6	1	7,133,305 JPY	0.03 %
7	2	7,105,158 JPY	0.03 %
8	2	7,088,467 JPY	0.03 %
9	1	6,775,124 JPY	0.03 %
10	1	6,733,752 JPY	0.02 %
11	2	6,646,824 JPY	0.02 %
12	1	6,536,052 JPY	0.02 %
13	2	6,498,850 JPY	0.02 %
14	1	6,428,109 JPY	0.02 %
15	1	6,408,295 JPY	0.02 %
16	1	6,380,207 JPY	0.02 %
17	1	6,371,725 JPY	0.02 %
18	1	6,356,759 JPY	0.02 %
19	1	6,341,140 JPY	0.02 %
20	1	6,318,854 JPY	0.02 %
Total 1 -20	25	141,865,127 JPY	0.52 %

Remarks:

Figures above are calculated based on each of the Sub-Servicers respectively and not across both of the Sub-Servicers.

Distribution by Contract Start Month

Origination Month	Number of Loans	Percentage of Loans	Outstanding Discounted Principal Balance	Percentage of Balance
09.2012	2	0.01 %	314,087 JPY	0.00 %
10.2012	0	0.00 %	0 JPY	0.00 %
11.2012	0	0.00 %	0 JPY	0.00 %
12.2012	3	0.02 %	547,692 JPY	0.00 %
01.2013	0	0.00 %	0 JPY	0.00 %
02.2013	2	0.01 %	738,178 JPY	0.00 %
03.2013	2	0.01 %	978,097 JPY	0.00 %
04.2013	0	0.00 %	0 JPY	0.00 %
05.2013	0	0.00 %	0 JPY	0.00 %
06.2013	0	0.00 %	0 JPY	0.00 %
07.2013	3	0.02 %	998,521 JPY	0.00 %
08.2013	3	0.02 %	3,512,627 JPY	0.01 %
09.2013	5	0.03 %	1,008,004 JPY	0.00 %
10.2013	3	0.02 %	328,963 JPY	0.00 %
11.2013	2	0.01 %	811,228 JPY	0.00 %
12.2013	6	0.03 %	2,170,138 JPY	0.01 %
01.2014	5	0.03 %	1,841,274 JPY	0.01 %
02.2014	11	0.06 %	6,060,786 JPY	0.02 %
03.2014	6	0.03 %	2,876,813 JPY	0.01 %
04.2014	5	0.03 %	3,072,600 JPY	0.01 %
05.2014	6	0.03 %	4,532,679 JPY	0.02 %
06.2014	7	0.04 %	3,683,957 JPY	0.01 %
07.2014	73	0.39 %	35,823,255 JPY	0.13 %
08.2014	59	0.32 %	34,783,563 JPY	0.13 %
09.2014	122	0.65 %	70,412,035 JPY	0.26 %
10.2014	76	0.41 %	39,753,433 JPY	0.15 %
11.2014	88	0.47 %	55,865,568 JPY	0.21 %
12.2014	120	0.64 %	81,547,372 JPY	0.30 %
01.2015	81	0.43 %	53,160,850 JPY	0.20 %
02.2015	161	0.86 %	115,624,286 JPY	0.43 %
03.2015	166	0.89 %	126,779,474 JPY	0.47 %
04.2015	65	0.35 %	48,116,694 JPY	0.18 %
05.2015	127	0.68 %	100,854,445 JPY	0.37 %
06.2015	133	0.71 %	108,468,251 JPY	0.40 %
07.2015	120	0.64 %	103,775,897 JPY	0.38 %
08.2015	158	0.85 %	139,153,426 JPY	0.51 %
09.2015	211	1.13 %	208,478,981 JPY	0.77 %
10.2015	148	0.79 %	158,123,456 JPY	0.59 %
11.2015	157	0.84 %	174,061,523 JPY	0.64 %
12.2015	332	1.78 %	368,088,274 JPY	1.36 %
01.2016	448	2.40 %	539,597,651 JPY	2.00 %
02.2016	652	3.50 %	847,915,648 JPY	3.14 %
03.2016	975	5.23 %	1,211,503,395 JPY	4.48 %
04.2016	468	2.51 %	623,363,203 JPY	2.31 %
05.2016	677	3.63 %	886,182,943 JPY	3.28 %
06.2016	701	3.76 %	979,108,657 JPY	3.62 %
07.2016	1,129	6.06 %	1,521,250,038 JPY	5.63 %
08.2016	1,390	7.46 %	1,977,762,909 JPY	7.32 %
09.2016	1,827	9.80 %	2,836,782,754 JPY	10.50 %
10.2016	1,166	6.26 %	1,828,989,149 JPY	6.77 %
11.2016	1,637	8.78 %	2,702,064,959 JPY	10.00 %
12.2016	612	3.28 %	1,025,461,956 JPY	3.79 %
01.2017	531	2.85 %	895,214,859 JPY	3.31 %
02.2017	642	3.44 %	1,074,407,303 JPY	3.98 %
03.2017	977	5.24 %	1,687,649,710 JPY	6.24 %
04.2017	377	2.02 %	666,856,427 JPY	2.47 %
05.2017	444	2.38 %	813,447,342 JPY	3.01 %
06.2017	465	2.49 %	864,256,931 JPY	3.20 %
07.2017	272	1.46 %	455,909,707 JPY	1.69 %
08.2017	270	1.45 %	509,963,231 JPY	1.89 %
09.2017	291	1.56 %	566,080,370 JPY	2.09 %
10.2017	155	0.83 %	305,149,160 JPY	1.13 %
11.2017	66	0.35 %	149,746,819 JPY	0.55 %
12.2017	0	0.00 %	0 JPY	0.00 %
01.2018	0	0.00 %	0 JPY	0.00 %
02.2018	0	0.00 %	0 JPY	0.00 %
03.2018	0	0.00 %	0 JPY	0.00 %
04.2018	0	0.00 %	0 JPY	0.00 %
05.2018	0	0.00 %	0 JPY	0.00 %
06.2018	0	0.00 %	0 JPY	0.00 %
07.2018	0	0.00 %	0 JPY	0.00 %
08.2018	0	0.00 %	0 JPY	0.00 %
09.2018	0	0.00 %	0 JPY	0.00 %
10.2018	0	0.00 %	0 JPY	0.00 %
11.2018	0	0.00 %	0 JPY	0.00 %
12.2018	0	0.00 %	0 JPY	0.00 %
01.2019	0	0.00 %	0 JPY	0.00 %
02.2019	0	0.00 %	0 JPY	0.00 %
03.2019	0	0.00 %	0 JPY	0.00 %
04.2019	0	0.00 %	0 JPY	0.00 %
05.2019	0	0.00 %	0 JPY	0.00 %
06.2019	0	0.00 %	0 JPY	0.00 %
Total	18,640	100.00 %	27,025,011,548 JPY	100.00 %

Distribution by Contract End Month

Maturity Month	Number of Loans	Percentage of Loans	Outstanding Discounted Principal Balance	Percentage of Balance
07.2019	474	2.54 %	493,853,601 JPY	1.83 %
08.2019	558	2.99 %	620,127,001 JPY	2.29 %
09.2019	810	4.35 %	1,032,874,311 JPY	3.82 %
10.2019	542	2.91 %	665,974,197 JPY	2.46 %
11.2019	745	4.00 %	1,076,024,033 JPY	3.98 %
12.2019	428	2.30 %	536,362,903 JPY	1.98 %
01.2020	353	1.89 %	440,261,171 JPY	1.63 %
02.2020	501	2.69 %	583,215,806 JPY	2.16 %
03.2020	675	3.62 %	867,170,010 JPY	3.21 %
04.2020	229	1.23 %	332,242,321 JPY	1.23 %
05.2020	347	1.86 %	458,877,915 JPY	1.70 %
06.2020	375	2.01 %	496,317,824 JPY	1.84 %
07.2020	277	1.49 %	308,346,128 JPY	1.14 %
08.2020	343	1.84 %	462,363,322 JPY	1.71 %
09.2020	381	2.04 %	492,373,735 JPY	1.82 %
10.2020	236	1.27 %	299,045,931 JPY	1.11 %
11.2020	259	1.39 %	318,907,297 JPY	1.18 %
12.2020	311	1.67 %	342,643,082 JPY	1.27 %
01.2021	421	2.26 %	520,627,928 JPY	1.93 %
02.2021	630	3.38 %	840,150,736 JPY	3.11 %
03.2021	894	4.80 %	1,170,050,516 JPY	4.33 %
04.2021	447	2.40 %	603,218,160 JPY	2.23 %
05.2021	621	3.33 %	825,038,012 JPY	3.05 %
06.2021	644	3.45 %	926,329,404 JPY	3.43 %
07.2021	684	3.67 %	996,972,953 JPY	3.69 %
08.2021	786	4.22 %	1,215,154,003 JPY	4.50 %
09.2021	1,093	5.86 %	1,783,972,100 JPY	6.60 %
10.2021	665	3.57 %	1,131,567,045 JPY	4.19 %
11.2021	901	4.83 %	1,588,974,374 JPY	5.88 %
12.2021	319	1.71 %	557,042,967 JPY	2.06 %
01.2022	273	1.46 %	505,173,116 JPY	1.87 %
02.2022	322	1.73 %	591,473,194 JPY	2.19 %
03.2022	536	2.88 %	957,123,078 JPY	3.54 %
04.2022	226	1.21 %	389,321,333 JPY	1.44 %
05.2022	263	1.41 %	479,438,892 JPY	1.77 %
06.2022	267	1.43 %	508,217,847 JPY	1.88 %
07.2022	160	0.86 %	303,613,644 JPY	1.12 %
08.2022	184	0.99 %	346,964,131 JPY	1.28 %
09.2022	164	0.88 %	346,436,485 JPY	1.28 %
10.2022	96	0.52 %	204,735,426 JPY	0.76 %
11.2022	50	0.27 %	100,786,431 JPY	0.37 %
12.2022	21	0.11 %	39,423,269 JPY	0.15 %
01.2023	13	0.07 %	20,750,440 JPY	0.08 %
02.2023	16	0.09 %	30,859,538 JPY	0.11 %
03.2023	21	0.11 %	38,479,078 JPY	0.14 %
04.2023	8	0.04 %	13,840,321 JPY	0.05 %
05.2023	17	0.09 %	37,647,264 JPY	0.14 %
06.2023	13	0.07 %	22,657,075 JPY	0.08 %
07.2023	5	0.03 %	12,189,615 JPY	0.05 %
08.2023	7	0.04 %	16,787,147 JPY	0.06 %
09.2023	8	0.04 %	18,439,482 JPY	0.07 %
10.2023	10	0.05 %	21,653,677 JPY	0.08 %
11.2023	1	0.01 %	1,873,288 JPY	0.01 %
12.2023	1	0.01 %	4,338,857 JPY	0.02 %
01.2024	1	0.01 %	2,211,610 JPY	0.01 %
02.2024	1	0.01 %	2,827,079 JPY	0.01 %
03.2024	1	0.01 %	3,619,354 JPY	0.01 %
04.2024	1	0.01 %	2,675,781 JPY	0.01 %
05.2024	0	0.00 %	0 JPY	0.00 %
06.2024	0	0.00 %	0 JPY	0.00 %
07.2024	1	0.01 %	3,571,846 JPY	0.01 %
08.2024	0	0.00 %	0 JPY	0.00 %
09.2024	1	0.01 %	2,325,571 JPY	0.01 %
10.2024	3	0.02 %	9,478,893 JPY	0.04 %
Total	18,640	100.00 %	27,025,011,548 JPY	100.00 %

Distribution by Monthly Payment

Monthly Payment	Number of Loans	Percentage of Loans	Outstanding Discounted Principal Balance	Percentage of Balance
<= 10,000 JPY	936	5.02 %	915,884,629 JPY	3.39 %
10,001 JPY - 20,000 JPY	3,657	19.62 %	3,826,763,573 JPY	14.16 %
20,001 JPY - 30,000 JPY	5,194	27.86 %	6,338,817,118 JPY	23.46 %
30,001 JPY - 40,000 JPY	3,881	20.82 %	5,668,494,586 JPY	20.97 %
40,001 JPY - 50,000 JPY	2,079	11.15 %	3,495,156,084 JPY	12.93 %
50,001 JPY - 60,000 JPY	1,138	6.11 %	2,179,153,815 JPY	8.06 %
60,001 JPY - 70,000 JPY	600	3.22 %	1,313,067,748 JPY	4.86 %
70,001 JPY - 80,000 JPY	330	1.77 %	806,941,554 JPY	2.99 %
80,001 JPY - 90,000 JPY	227	1.22 %	592,710,868 JPY	2.19 %
90,001 JPY - 100,000 JPY	172	0.92 %	482,858,837 JPY	1.79 %
100,001 JPY - 110,000 JPY	112	0.60 %	332,201,236 JPY	1.23 %
110,001 JPY - 120,000 JPY	81	0.43 %	267,043,591 JPY	0.99 %
120,001 JPY - 130,000 JPY	69	0.37 %	224,069,010 JPY	0.83 %
130,001 JPY - 140,000 JPY	37	0.20 %	141,985,186 JPY	0.53 %
140,001 JPY - 150,000 JPY	35	0.19 %	127,916,440 JPY	0.47 %
>= 150,001 JPY	92	0.49 %	311,947,273 JPY	1.15 %
Total	18,640	100.00 %	27,025,011,548 JPY	100.00 %

Distribution by Bonus Payment

Bonus Payment	Number of Loans	Percentage of Loans	Outstanding Discounted Principal Balance	Percentage of Balance
No Bonus Payment	10,924	58.61 %	15,391,944,814 JPY	56.95 %
1 JPY - 25,000 JPY	203	1.09 %	203,643,937 JPY	0.75 %
25,001 JPY - 50,000 JPY	1,998	10.72 %	2,446,532,409 JPY	9.05 %
50,001 JPY - 75,000 JPY	723	3.88 %	1,005,297,249 JPY	3.72 %
75,001 JPY - 100,000 JPY	2,677	14.36 %	3,979,421,786 JPY	14.72 %
100,001 JPY - 125,000 JPY	356	1.91 %	547,933,189 JPY	2.03 %
125,001 JPY - 150,000 JPY	999	5.36 %	1,791,925,390 JPY	6.63 %
150,001 JPY - 175,000 JPY	97	0.52 %	185,828,105 JPY	0.69 %
175,001 JPY - 200,000 JPY	411	2.20 %	860,292,126 JPY	3.18 %
200,001 JPY - 225,000 JPY	28	0.15 %	61,032,460 JPY	0.23 %
225,001 JPY - 250,000 JPY	104	0.56 %	236,855,899 JPY	0.88 %
250,001 JPY - 275,000 JPY	9	0.05 %	23,256,691 JPY	0.09 %
275,001 JPY - 300,000 JPY	72	0.39 %	177,476,999 JPY	0.66 %
300,001 JPY - 325,000 JPY	3	0.02 %	7,568,151 JPY	0.03 %
325,001 JPY - 350,000 JPY	13	0.07 %	35,061,587 JPY	0.13 %
350,001 JPY - 375,000 JPY	2	0.01 %	7,972,259 JPY	0.03 %
375,001 JPY - 400,000 JPY	11	0.06 %	42,842,037 JPY	0.16 %
400,001 JPY - 425,000 JPY	0	0.00 %	0 JPY	0.00 %
425,001 JPY - 450,000 JPY	1	0.01 %	5,228,263 JPY	0.02 %
450,001 JPY - 475,000 JPY	0	0.00 %	0 JPY	0.00 %
475,001 JPY - 500,000 JPY	8	0.04 %	12,546,089 JPY	0.05 %
500,001 JPY or more	1	0.01 %	2,352,108 JPY	0.01 %
Total	18,640	100.00 %	27,025,011,548 JPY	100.00 %

Distribution by Motor Type

Motor Type	Number of Loans	Percentage of Loans	Outstanding Discounted Principal Balance	Percentage of Balance
EA 189	0	0.00 %	0 JPY	0.00 %
Other	18,640	100.00 %	27,025,011,548 JPY	100.00 %
Total	18,640	100.00 %	27,025,011,548 JPY	100.00 %

Disclaimer

This presentation contains forward-looking statements and information on the business development of the Volkswagen Group. These statements may be spoken or written and can be recognized by terms such as "expects", "anticipates", "intends", "plans", "believes", "seeks", "estimates", "will", or words with similar meaning. These statements are based on assumptions relating to the development of the economies of individual countries, and in particular of the automotive industry, which we have made on the basis of the information available to us and which we consider to be realistic at the time of going to press. The estimates given involve a degree of risk, and the actual developments may differ from those forecast.

Consequently, any unexpected fall in demand or economic stagnation in our key sales markets, such as in Western Europe (and especially Germany) or in the USA, Brazil or China, will have a corresponding impact on the development of our business. The same applies in the event of a significant shift in current exchange rates relative to the US dollar, sterling, yen, Brazilian real, Chinese renminbi and Czech koruna.

If any of these or other risks occur, or if the assumptions underlying any of these statements prove incorrect, the actual results may significantly differ from those expressed or implied by such statements.

We do not update forward-looking statements retrospectively. Such statements are valid on the date of publication and can be superceded.

This information does not constitute an offer to exchange or sell or an offer to exchange or buy any securities.