

Deal Name: Driver Japan six

Originator: Volkswagen Financial Services Japan Ltd.
Gotenyama Trust Tower 17F
7-35 Kitashinagawa 4-chome, Shinagawa-ku
Tokyo 140-0001, Japan

Reporting Entity: Volkswagen Financial Services Japan Ltd.
Treasury Dept.
Gotenyama Trust Tower 17F
7-35 Kitashinagawa 4-chome, Shinagawa-ku
Tokyo 140-0001, Japan
Tel No.: +81(0)3-5792-7261
Fax No.: +81(0)3-3280-7365
E-mail: vwfsjp.abs@vwfs.com

**Trustor of the First Trust:
Servicer:** Volkswagen Financial Services Japan Ltd.

**Trustee of the First Trust:
Trustee of the Second Trust:** Deutsche Trust Company Limited Japan
Sanno Park Tower, 11-1,
Nagatacho 2-chome, Chiyoda-ku,
Tokyo, 100-6172, Japan
Trust Business Administration Department
Tel No.: +81(0)3-5156-5637
Fax No.: +81(0)3-5156-5658
E-mail: DB_Trust_Trust@list.db.com



Contents

Page	Tables of Contents
1	Front Page
2	Contents
3	Deal Overview
4	Deal Overview: Counterparties I
5	Deal Overview: Counterparties II
6	Information regarding the TBI and ABL to the Second Trust
7	Pool Information
8	Available Distribution
9	Waterfall
10	Credit Enhancement
11	Cumulative Gross Loss Ratio & Performance Trigger
12	Cumulative Gross Loss Ratio & Performance Trigger (Chart)
13	Default & Delinquencies
14	Run Out Schedule (Previous)
15	Run Out Schedule
16	Expected Amortization to the Second Trust
17	Sub-Servicer
18	Brand
19	New and Used
20	Product Type
21	RV
22	Brand New and Used
23	Customer Type
24	Outstanding Discounted Principal Balance
25	Original Principal Amount
26	Interest Rate paid by the Obligor
27	Original Term
28	Remaining Term
29	Seasoning
30	Type of Car
31	Brand and Model
32	Geographic Dist. by Prefecture
33	Obligor Concentration
34	Contract Start Month
35	Contract End Month
36	Monthly payment
37	Bonus payment
38	Mortor Type

Deal Overview

Cut Off Date:	2017/02/10		
Trust Commencement Date:	2017/02/23	Legal Maturity of the First Trust:	2025/06/27
Monthly Period:	2018/12/11	to	2019/01/10
Reporting Date:	2019/01/18		
Reporting Frequency:	monthly		
Period No.:	23		
Remittance Date:	2019/01/22		
Advance Payment Date:	2019/01/22		
Cash Adjustment Date:	2019/01/22		
Additional Entrustment Date:	2019/01/24		
Trust Calculation Date:	2019/01/24		
Trust Calculation Period:	2018/12/27	to	2019/01/24
First Trust Payment Date:	2019/01/25		
Second Trust Payment Date:	2019/01/28		
Interest Calculation Period:	2018/12/29	to	2019/01/28
Next Reporting Date:	2019/02/18		

Pool information at the Initial Cut off Date

	Number of Contracts	Outstanding Discounted Principal Balance	Outstanding Nominal Balance
Outstanding Pool	30,757	64,171,706,472 JPY	67,028,993,300 JPY

Credit Type	Percentage of Loans	Outstanding Discounted Principal Balance	Percentage of Balance
Balloon	76.13 %	55,443,642,000 JPY	86.40 %
Equal Instalment Loan	23.87 %	8,728,064,472 JPY	13.60 %
Total	100.00 %	64,171,706,472 JPY	100.00 %

Type of Car	Percentage of Loans	Outstanding Discounted Principal Balance	Percentage of Balance
New	66.66 %	49,506,381,305 JPY	77.15 %
Used	33.34 %	14,665,325,167 JPY	22.85 %
Total	100.00 %	64,171,706,472 JPY	100.00 %

Deal Overview: Counterparties I

Joint Lead Managers:

Shinsei Securities Co., Ltd.
 Nihonbashi Muromachi Nomura Building, 4-3,
 Nihonbashi-muromachi 2-chome,
 Chuo-ku,
 Tokyo 103-0022, Japan

BNP Paribas Securities (Japan) Limited
 GranTokyo North Tower, 9-1,
 Marunouchi 1-chome,
 Chiyoda-ku,
 Tokyo 100-6740, Japan

Trust Management Account Bank:

MUFG Bank, Ltd.
 4-2 Toranomom 1-chome,
 Minato-ku
 Tokyo 105-0001, Japan

Originator:

Trustor of the First Trust:

Servicer:

Volkswagen Financial Services Japan Ltd.
 Gotenyama Trust Tower 17F
 7-35 Kitashinagawa 4-chome, Shinagawa-ku
 Tokyo 140-0001, Japan

Trustee of the First Trust:

Trustee of the Second Trust:

Deutsche Trust Company Limited Japan
 Attn.: Driver Japan Six
 Trust Business Administration Department

ABL Lender to the First Trust:

Trustor of the Second Trust:

Shinsei Securities Co., Ltd.

Seller of the Trust Beneficial

Interest of the Second Trust

Shinsei Securities Co., Ltd.
 BNP Paribas Securities (Japan) Limited

Rating								
Moody's			Fitch			R&I		
Long Term	Short Term	Outlook	Long Term	Short Term	Outlook	Long Term	Short Term	Outlook
n.a.	n.a.	n.a.	n.a.	n.a.	n.a.	n.a.	n.a.	n.a.
n.a.	n.a.	n.a.	n.a.	n.a.	n.a.	n.a.	n.a.	n.a.
A1	P-1	Stable	A	F1	Stable	AA-	a-1+	Stable

Deal Overview: Counterparties II

Rating Agencies:

Moody's SF Japan K.K.

Attn.: Driver Japan six
 Structure Finance Group Monitoring Division
 5-1 Atago 2-chome, Minato-ku
 Tokyo 105-6220, Japan
 E-mail: monitor.msfi@moodys.com

Fitch Ratings Japan Limited

Attn.: Driver Japan six
 Structured Finance
 Kojimachi Crystal City East Wing 3rd Floor,
 4-8 Kōjimachi, Chiyoda-ku,
 Tokyo 102-0083, Japan
 E-mail: tokyo.surveillance@fitchratings.com

Rating and Investment Information, Inc.

Attn.: Monitoring Group Department:
 Structured Finance Department
 TERRACE SQUARE, 3-22,
 Kanda Nishikicho, Chiyoda-ku,
 Tokyo 101-0054, Japan
 E-mail: sfmonitor@r-i.co.jp

Rating of VW

Volkswagen Financial Services AG

Volkswagen AG

Rating								
Moody's			Fitch			R&I		
Short Term	Long Term	Outlook	Short Term	Long Term	Outlook	Short Term	Long Term	Outlook
P-2	A3	Stable	n.a.	n.a.	n.a.	n.a.	n.a.	n.a.
P-2	A3	Stable	F2	BBB+	Stable	n.a.	n.a.	n.a.

Information regarding Trust Beneficial Interest of the Second Trust & Asset Backed Loan to the Second Trust
Rating Details
Rating at Issue Date

	TBI	ABL
Moody's	Aaa(sf)	Aaa(sf)
Fitch	AAAsf	AAAsf
R&I	AAA	AAA

Current Rating

	TBI	ABL
Moody's	Aaa(sf)	Aaa(sf)
Fitch	AAAsf	AAAsf
R&I	AAA	AAA

Information on TBI & ABL

	TBI	ABL
Initial Balance	39,200,000,000 JPY	20,800,000,000 JPY
Expected Maturity Date	2021/06/28	2021/06/28
Legal Maturity of the Second Trust	2025/06/30	2025/06/30
Payment Dates	28th	28th
Business Day Convention	Modified Following	Modified Following
Listing	None	—

Information on Interest

	TBI	ABL
Fixed/ Floating	Fixed	Fixed
Current Coupon	0.19%	0.19%
Day Count Convention	30/360	30/360

Selling Restriction

The holders of the Beneficial Interest and the ABL Lenders* are prohibited from dividing, assigning, pledging or creating any other security interest over any of the Beneficial Interest and the Asset Backed Loans without the prior written approval of the Trustee of the Second Trust.

(*)The holders of the Beneficial Interest and the ABL Lenders are limited to specified investors (*tokutei toushika*) as defined under Paragraph 31 of Article 2 of the Financial Instruments and Exchange Act (Law no.25 of 1948 as amended).

Clean-Up Call

VWFS Japan as the Trustor of the First Trust has a right at its option to exercise a clean-up call to repurchase of all, but not part, of the outstanding Auto Loan Receivables from the Trustee of the First Trust on any Trust Calculation Date, the Discounted Principal Balance of all outstanding Auto Loan Receivables is expected to be less than ten percent (10%) of the Discounted Principal Balance of the Initial Auto Loan Receivables as of the Initial Cut-off Date after the distribution pursuant to Article 18.1 of the First Trust Agreement on the immediately following First Trust Payment Date.

Pool Information

Pool Balance on Initial Cut-Off Date

Status	Number of Contracts	Outstanding Discounted Principal Balance
Normal	30,757	64,171,706,472 JPY
Cancellation	0	0 JPY
Early Termination	0	0 JPY
Defaulted Receivables	0	0 JPY
Matured	0	0 JPY
Refinance Option	0	0 JPY
Repurchase	0	0 JPY
Total	30,757	64,171,706,472 JPY

Pool Balance before entrustment of Additional Auto Loan Receivables

Status	Number of Contracts on previous EoP	Outstanding Discounted Principal Balance on previous EoP	Number of Contracts "as Collections" during the relevant Monthly Period*	Outstanding Discounted Principal Balance "as Collections" during the relevant Monthly Period*	Number of Contracts EoP before entrustment of Additional Auto Loan Receivables	Outstanding Discounted Principal Balance EoP before entrustment of Additional Auto Loan Receivables
Normal	25,749	42,512,361,606 JPY	24,614	1,606,514,105 JPY	24,614	39,494,739,541 JPY
Cancellation	0	0 JPY	0	0 JPY	0	0 JPY
Early Termination	0	0 JPY	457	792,131,065 JPY	0	0 JPY
Defaulted Receivables	0	0 JPY	3	5,685,523 JPY	0	0 JPY
Matured	0	0 JPY	524	383,759,626 JPY	0	0 JPY
Refinance Option	0	0 JPY	151	229,531,746 JPY	0	0 JPY
Repurchase	0	0 JPY	0	0 JPY	0	0 JPY
Total	25,749	42,512,361,606 JPY	25,749	3,017,622,065 JPY	24,614	39,494,739,541 JPY

Pool Balance after entrustment of Additional Auto Loan Receivables

Status	Number of Contracts EoP before entrustment of Additional Auto Loan Receivables	Outstanding Discounted Principal Balance EoP before entrustment of Additional Auto Loan Receivables	Number of Contracts of Additional Auto Loan Receivables	Outstanding Discounted Principal Balance of Additional Auto Loan Receivables	Number of Contracts EoP after entrustment of Additional Auto Loan Receivables	Outstanding Discounted Principal Balance EoP after entrustment of Additional Auto Loan Receivables
Normal	24,614	39,494,739,541 JPY	0	0 JPY	24,614	39,494,739,541 JPY
Cancellation	0	0 JPY	0	0 JPY	0	0 JPY
Early Termination	0	0 JPY	0	0 JPY	0	0 JPY
Defaulted Receivables	0	0 JPY	0	0 JPY	0	0 JPY
Matured	0	0 JPY	0	0 JPY	0	0 JPY
Refinance Option	0	0 JPY	0	0 JPY	0	0 JPY
Repurchase	0	0 JPY	0	0 JPY	0	0 JPY
Total	24,614	39,494,739,541 JPY	0	0 JPY	24,614	39,494,739,541 JPY

Limits on Eligibility Criteria

Status Limits on Eligibility Criteria (v) (including Additional Entrustment)	Current Exposure in %	Limits in % of the aggregate Discounted Principal Balance of the Auto Loan Receivables outstanding	Status
(i) on Used Purchased Vehicle	22.40 %	35 %	-*
(ii) on Non-VW Vehicles	0.01 %	5 %	-*
(iii) on Balloon Payment	50.47 %	50 %	-*

(*) not applicable since the Revolving Period ended

Outstanding Balances

Monthly Period: from 2018/12/11 to 2019/01/10
Reporting Date: 2019/01/18
Trust Calculation Date: 2019/01/24

Outstanding Balances

	Number of Contracts	Aggregate Amount of the Discounted Principal Balance	Aggregate Amount of the Nominal Balance
Balance on the previous EoP	25,749	42,512,361,606 JPY	43,815,219,400 JPY
Balance after counting on the Collections during the relevant Monthly Period	24,614	39,494,739,541 JPY	40,703,706,100 JPY
Balance of Additional Auto Loan Receivables	0	0 JPY	0 JPY
Aggregate Amount of Auto Loan Receivables	24,614	39,494,739,541 JPY	40,703,706,100 JPY

Collections

	Number of Contracts	Aggregate Amount of the Discounted Principal Balance	Aggregate Amount of the Nominal Balance
Collections: Amortization of current contracts	24,614	1,606,514,105 JPY	1,679,740,800 JPY
Collections: Cancellation	0	0 JPY	0 JPY
Collections: Early Termination	457	792,131,065 JPY	793,065,927 JPY
Collections: Defaulted Receivables	3	5,685,523 JPY	5,699,430 JPY
Collections: Matured	524	383,759,626 JPY	384,418,700 JPY
Collections: Refinance Option	151	229,531,746 JPY	229,910,000 JPY
Collections: Repurchase	0	0 JPY	0 JPY
Sum	25,749	3,017,622,065 JPY	3,092,834,857 JPY

Available Distribution Amount

	Number of Contracts	Aggregate Amount of the Nominal Balance
(a) the Collections for the Monthly Period with respect to such Trust Calculation Date	25,749	3,092,834,857 JPY
(b) drawings from the Cash Collateral Ledger in accordance with Article 18.3 of the First Trust Agreement	0	0 JPY
(c) net investment earnings from Eligible Investments	0	0 JPY
(d) net proceeds from the sale or disposal of the Trust Assets of the First Trust	0	0 JPY
(e) any amount which is carried over from the immediately preceding Trust Calculation Date	0	0 JPY
Sum	25,749	3,092,834,857 JPY

Waterfall

There is no distinction between principal and interest, and all collections go through a single priority of payments			
		Payment	Remaining Amount
Available Distribution Amount	plus	3,092,834,857 JPY	3,092,834,857 JPY
(a) an amount necessary for the payment of all taxes and public charges to be paid to the relevant public authority by the immediately following First Trust Payment Date.	less	0 JPY	3,092,834,857 JPY
(b) an amount necessary for the payment of all Fees for the Trustee of the First Trust to be paid to the Trustee of the First Trust by the immediately following First Trust Payment Date.	less	382,610 JPY	3,092,452,247 JPY
(c) an amount necessary for the payment of the Servicing Fee to be paid to the Servicer by the immediately following First Trust Payment Date.	less	38,261,125 JPY	3,054,191,122 JPY
(d) an amount necessary for the payment of the Trust Expenses of the First Trust as provided in Article 23.1 (including the Rating Fees, Costs of the Second Trust and those fees not otherwise covered by (b) or (c) above) to be paid to the relevant party by the immediately following First Trust Payment Date (including any amounts advanced by the Trustee of the First Trust pursuant to Article 23.3)	less	398,054 JPY	3,053,793,068 JPY
(e) an amount necessary for the payment of overdue and unpaid interest on the Asset Backed Loans to the First Trust (if any) to be paid to the Trustee of the Second Trust by the immediately following First Trust Payment Date.	less	0 JPY	3,053,793,068 JPY
(f) an amount necessary for the payment to the Trustee of the Second Trust of interest on the Asset Backed Loan to the First Trust accruing during the relevant Interest Calculation Period	less	5,957,044 JPY	3,047,836,024 JPY
(g) an amount necessary to top up the balance thereof until it is equal to the Cash Collateral Ledger Target Balance	less	0 JPY	3,047,836,024 JPY
(h) (i) prior to the expiration of the Revolving Period: an amount necessary for the redemption of any Additional Senior Beneficial Interest;	less	2,670,595,528 JPY	377,240,496 JPY
(ii) following the expiration of the Revolving Period and prior to the occurrence of an Early Amortization Event, an amount necessary for the payment to the Trustee of the Second Trust of the Asset Backed Loan Principal Payment Amount for the relevant First Trust Payment Date.			
(iii) following the occurrence of the Early Amortization Event, an amount necessary for the payment to the Trustee of the Second Trust of the remaining principal balance of the Asset Backed Loan to the First Trust.			
(i) an amount necessary for the payment to the Trustee of the First Trust of any Indemnified Amounts which are not compensated by the Trustor of the First Trust	less	0 JPY	377,240,496 JPY
(j) an amount necessary for the payment to the Subordinated Beneficiary of the Subordinated Beneficial Principal Payment Amount for the relevant First Trust Payment Date.	less	347,026,537 JPY	30,213,959 JPY
(k) (i) prior to the expiration of the Revolving Period, then (x) if a transfer is made under (j) above, such remaining amount will be transferred to the Expenses Distribution Ledger for payment to the Subordinated Beneficiary as a payment of earnings on the Subordinated Beneficial Interest, and such payment shall be made on the First Trust Payment Date immediately following such Trust Calculation Date or (y) if no transfer is made under (j) above, such remaining amount will be carried forward to the next Trust Calculation Date.	less	30,213,959 JPY	0 JPY
(ii) following the expiration of the Revolving Period and prior to the occurrence of an Early Amortization Event, then such remaining amount will be transferred to the Expenses Distribution Ledger for payment to the Subordinated Beneficiary as a payment of earnings on the Subordinated Beneficial Interest, and such payment shall be made on the First Trust Payment Date immediately following such Trust Calculation Date.			
(iii) following the occurrence of an Early Amortization Event, the remaining amount in the Trust Collection Ledger will be carried forward to the next Trust Calculation Date.			

Credit Enhancement

Subordinated Principal Balance as of the relevant First Trust Payment Date

	Percentage of Aggregate Discounted Principal Balance	Value
(i) the aggregate amount of the Discounted Principal Balance of all Auto Loan Receivables outstanding		39,494,739,541 JPY
(ii) Asset Backed Loan Principal Balance on the relevant First Trust Payment Date		34,952,844,493 JPY
Overcollateralization (= (i) - (ii))	11.50 %	4,541,895,048 JPY
Trust Collection Ledger which is carried over from the immediately preceding Trust Calculation Date	0.00 %	0 JPY
The amount in the Cash Collateral Ledger	0.87 %	345,000,000 JPY
Subordinated Principal Balance	12.37 %	4,886,895,048 JPY

Trust Management Account (TMA)

	in JPY	+/-	in JPY (previous)
Initial Balance on Cash Entrustment Date	345,000,000 JPY		
Outstanding Balance on First Trust Payment Date	345,000,000 JPY	0 JPY	345,000,000 JPY
(a) Expenses Distribution Ledger	0 JPY	0 JPY	0 JPY
(b) Trust Collection Ledger	0 JPY	0 JPY	0 JPY
(c) Cash Collateral Ledger	345,000,000 JPY	0 JPY	345,000,000 JPY
Cash Collateral Ledger Target Balance	345,000,000 JPY		

Calculation of Credit Enhancement

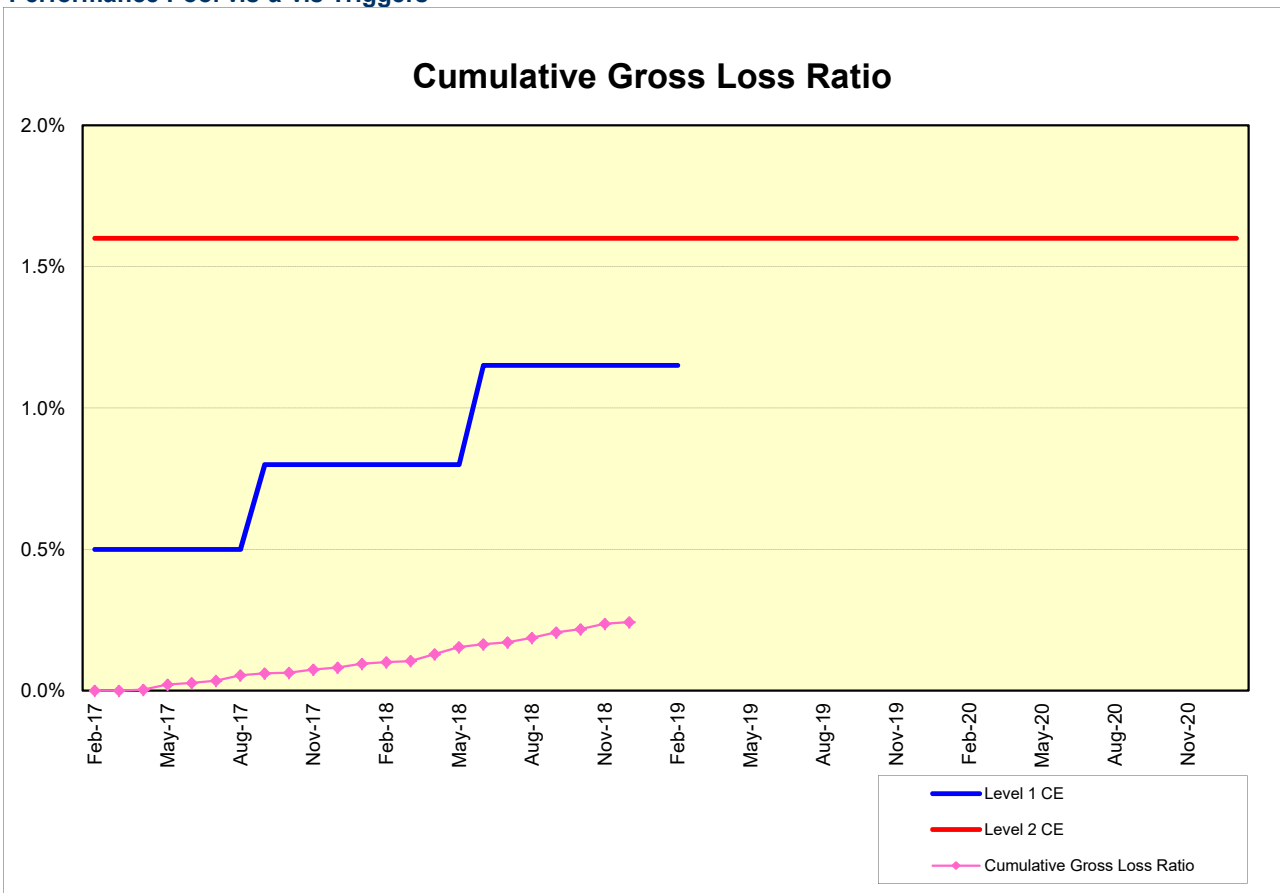
Driver Japan six's Credit Enhancement consists of the items listed above in the Subordinated Principal Balance as of the relevant date of determination (immediately following the First Trust Payment Date). The result provides an absolute value, which will be applied to the (amortized) Aggregate Discounted Principal Balance as of the end of the relevant date.

The transaction has a Revolving Period of 12 months until February 2018.

Asset Backed Loan Overcollateralization Percentage is (i) prior to the expiration of the Revolving Period, 8.5%, and (ii) following the expiration of the Revolving Period, 11.5%; provided, in each case no Credit Enhancement Increase Condition shall be in effect. After a Level 1 Credit Enhancement Increase Condition in effect, 17% and after a Level 2 Credit Enhancement Increase Condition is in effect, 100%.

Cumulative Gross Loss & Cumulative Repurchased Receivables

Performance Pool vis-a-vis Triggers



Cumulative Repurchased Receivables

	Number of Contracts	Repurchase Price
Beginning of Period	0	0 JPY
Repurchased Receivables	0	0 JPY
End of Period	0	0 JPY

Defaulted and Delinquent Contracts

Information of Delinquencies and Defaults

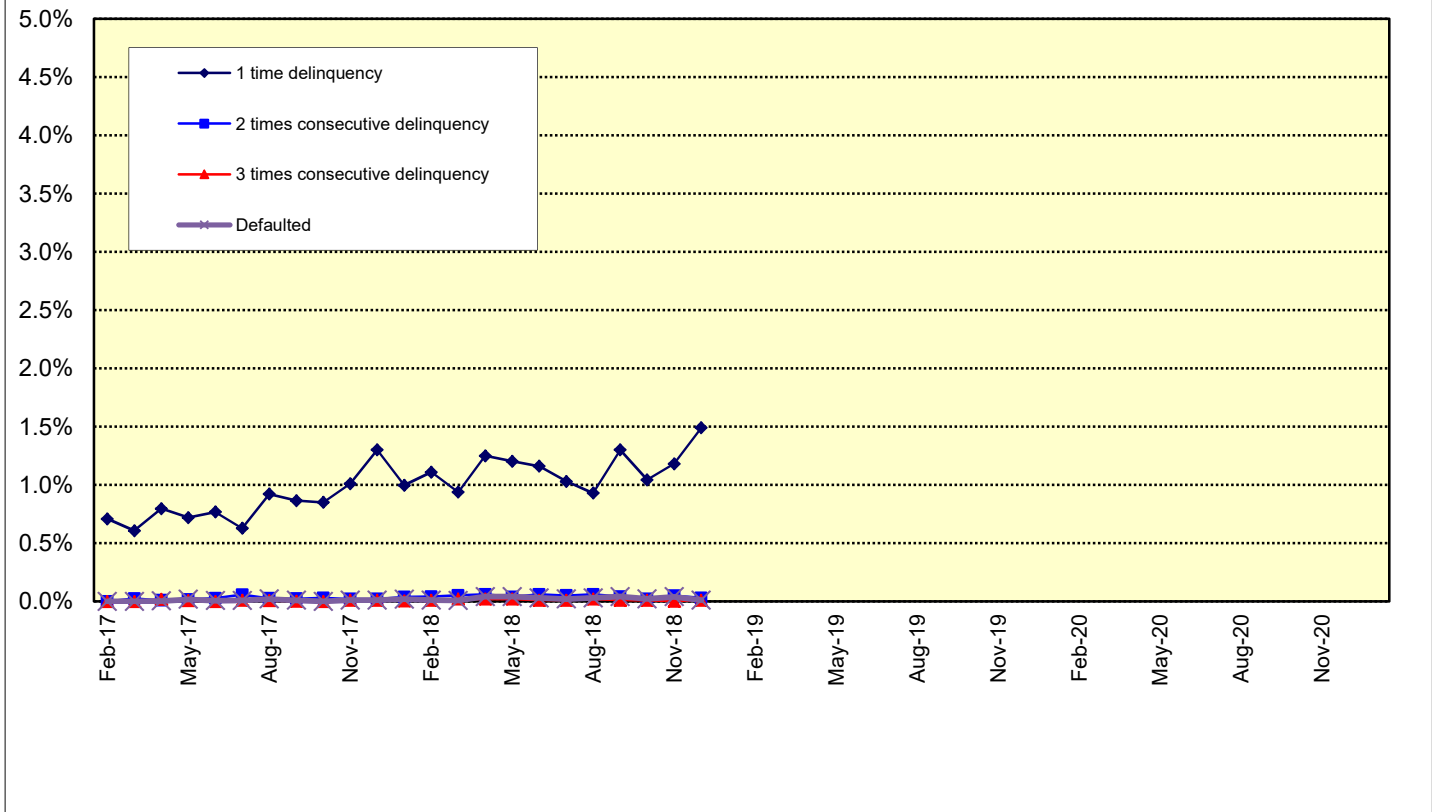
Current Reporting Period	Number of Contracts	Percentage of Contracts (*)	Outstanding Discounted Principal Balance	Percentage of Principal Balance (*)	Outstanding Nominal Balance	Percentage of Nominal Balance (*)
Delinquent	353	1.37 %	607,911,254 JPY	1.43 %	630,105,300 JPY	1.44 %
Default	3	0.01 %	5,685,523 JPY	0.01 %	5,699,430 JPY	0.01 %

(*) Based on the previous EoP

Delinquency Profile (Information Purpose Only)

Days in Arrears	Number of Contracts	Percentage of Contracts	Outstanding Discounted Principal Balance	Percentage of Principal Balance	Outstanding Nominal Balance	Percentage of Nominal Balance
1	342	1.39 %	589,347,895 JPY	1.49 %	610,816,600 JPY	1.50 %
2	8	0.03 %	13,796,412 JPY	0.03 %	14,312,400 JPY	0.04 %
3	3	0.01 %	4,766,947 JPY	0.01 %	4,976,300 JPY	0.01 %
Total	353	1.43 %	607,911,254 JPY	1.54 %	630,105,300 JPY	1.55 %

Delinquent / Defaulted (Gross Loss) Ratio



Run Out Schedule

ROS on the previous EoP on 2018/12/10

Next Payment Month	Number of Contracts	ABS Outstanding Principal	ABS Outstanding Interest	Outstanding Installment	ABS Remaining Principal	ABS Remaining Interest	ABS Remaining Installment
11.2018	25,749	42,512,361,606 JPY	1,302,857,794 JPY	43,815,219,400 JPY	0 JPY	0 JPY	0 JPY
12.2018	25,749	40,259,487,392 JPY	1,227,168,108 JPY	41,486,655,500 JPY	2,252,874,214 JPY	75,689,686 JPY	2,328,563,900 JPY
01.2019	25,072	38,798,575,734 JPY	1,155,562,966 JPY	39,954,138,700 JPY	1,460,911,658 JPY	71,605,142 JPY	1,532,516,800 JPY
02.2019	24,624	37,417,864,510 JPY	1,086,582,090 JPY	38,504,446,600 JPY	1,380,711,224 JPY	68,980,876 JPY	1,449,692,100 JPY
03.2019	23,995	35,635,288,944 JPY	1,020,024,856 JPY	36,655,313,800 JPY	1,782,575,566 JPY	66,557,234 JPY	1,849,132,800 JPY
04.2019	22,981	34,318,749,004 JPY	956,536,896 JPY	35,275,285,900 JPY	1,316,539,940 JPY	63,487,960 JPY	1,380,027,900 JPY
05.2019	22,501	32,901,744,643 JPY	895,290,057 JPY	33,797,034,700 JPY	1,417,004,361 JPY	61,246,839 JPY	1,478,251,200 JPY
06.2019	21,869	30,842,928,956 JPY	836,438,344 JPY	31,679,367,300 JPY	2,058,815,687 JPY	58,851,713 JPY	2,117,667,400 JPY
07.2019	21,032	29,036,446,885 JPY	781,033,815 JPY	29,817,480,700 JPY	1,806,482,071 JPY	55,404,529 JPY	1,861,886,600 JPY
08.2019	20,406	27,559,426,367 JPY	728,701,633 JPY	28,288,128,000 JPY	1,477,020,518 JPY	52,332,182 JPY	1,529,352,700 JPY
09.2019	19,741	25,750,553,982 JPY	678,760,218 JPY	26,429,314,200 JPY	1,808,872,385 JPY	49,941,415 JPY	1,858,813,800 JPY
10.2019	18,756	24,435,022,784 JPY	631,601,916 JPY	25,066,624,700 JPY	1,315,531,198 JPY	47,158,302 JPY	1,362,689,500 JPY
11.2019	18,115	22,771,182,583 JPY	586,589,717 JPY	23,357,772,300 JPY	1,663,840,201 JPY	45,012,199 JPY	1,708,852,400 JPY
12.2019	17,241	21,200,043,238 JPY	544,101,162 JPY	21,744,144,400 JPY	1,571,139,345 JPY	42,488,555 JPY	1,613,627,900 JPY
01.2020	16,761	20,147,452,337 JPY	504,386,063 JPY	20,651,838,400 JPY	1,052,590,901 JPY	39,715,099 JPY	1,092,306,000 JPY
02.2020	16,367	19,149,060,221 JPY	466,539,379 JPY	19,615,599,600 JPY	998,392,116 JPY	37,846,684 JPY	1,036,238,800 JPY
03.2020	15,812	17,957,367,547 JPY	430,426,853 JPY	18,387,794,400 JPY	1,191,692,674 JPY	36,112,526 JPY	1,227,805,200 JPY
04.2020	15,058	17,219,599,613 JPY	396,271,087 JPY	17,615,870,700 JPY	737,767,934 JPY	34,155,766 JPY	771,923,700 JPY
05.2020	14,790	16,432,251,419 JPY	363,449,281 JPY	16,795,700,700 JPY	787,348,194 JPY	32,821,806 JPY	820,170,000 JPY
06.2020	14,403	15,406,115,782 JPY	332,030,218 JPY	15,738,146,000 JPY	1,026,135,637 JPY	31,419,063 JPY	1,057,554,700 JPY
07.2020	13,984	14,488,034,883 JPY	302,497,217 JPY	14,790,532,100 JPY	918,080,899 JPY	29,533,001 JPY	947,613,900 JPY
08.2020	13,689	13,730,758,613 JPY	274,727,087 JPY	14,005,485,700 JPY	757,276,270 JPY	27,770,130 JPY	785,046,400 JPY
09.2020	13,316	13,043,497,293 JPY	248,356,207 JPY	13,291,853,500 JPY	687,261,320 JPY	26,370,880 JPY	713,632,200 JPY
10.2020	12,894	12,493,266,289 JPY	223,277,111 JPY	12,716,543,400 JPY	550,231,004 JPY	25,079,096 JPY	575,310,100 JPY
11.2020	12,639	11,945,980,118 JPY	199,289,082 JPY	12,145,269,200 JPY	547,286,171 JPY	23,988,029 JPY	571,274,200 JPY
12.2020	12,349	11,000,929,190 JPY	176,388,410 JPY	11,177,317,600 JPY	945,050,928 JPY	22,900,672 JPY	967,951,600 JPY
01.2021	11,975	10,254,084,566 JPY	155,372,334 JPY	10,409,456,900 JPY	746,844,624 JPY	21,016,076 JPY	767,860,700 JPY
02.2021	11,486	9,458,346,019 JPY	135,775,781 JPY	9,594,121,800 JPY	795,738,547 JPY	19,596,553 JPY	815,335,100 JPY
03.2021	10,747	8,537,332,918 JPY	117,682,982 JPY	8,655,015,900 JPY	921,013,101 JPY	18,092,799 JPY	939,105,900 JPY
04.2021	9,707	7,978,445,869 JPY	101,296,831 JPY	8,079,742,700 JPY	558,887,049 JPY	16,386,151 JPY	575,273,200 JPY
05.2021	9,201	7,348,691,415 JPY	86,024,885 JPY	7,434,716,300 JPY	629,754,454 JPY	15,271,946 JPY	645,026,400 JPY
06.2021	8,499	6,570,301,402 JPY	71,983,698 JPY	6,642,285,100 JPY	778,390,013 JPY	14,041,187 JPY	792,431,200 JPY
07.2021	7,752	5,711,388,896 JPY	59,510,704 JPY	5,770,899,600 JPY	858,912,506 JPY	12,472,994 JPY	871,385,500 JPY
08.2021	6,992	4,950,130,779 JPY	48,688,421 JPY	4,998,819,200 JPY	761,258,117 JPY	10,822,283 JPY	772,080,400 JPY
09.2021	6,125	3,978,881,638 JPY	39,257,262 JPY	4,018,138,900 JPY	971,249,141 JPY	9,431,159 JPY	980,680,300 JPY
10.2021	4,955	3,350,611,291 JPY	31,646,809 JPY	3,382,258,100 JPY	628,270,347 JPY	7,610,453 JPY	635,880,800 JPY
11.2021	4,231	2,558,660,971 JPY	25,200,629 JPY	2,583,861,600 JPY	791,950,320 JPY	6,446,180 JPY	798,396,500 JPY
12.2021	3,253	2,125,831,134 JPY	20,182,766 JPY	2,146,013,900 JPY	432,829,837 JPY	5,017,863 JPY	437,847,700 JPY
01.2022	2,908	1,815,766,388 JPY	16,002,012 JPY	1,831,768,400 JPY	310,064,746 JPY	4,180,754 JPY	314,245,500 JPY
02.2022	2,606	1,499,586,256 JPY	12,429,844 JPY	1,512,016,100 JPY	316,180,132 JPY	3,572,168 JPY	319,752,300 JPY
03.2022	2,245	1,080,346,452 JPY	9,466,848 JPY	1,089,813,300 JPY	419,239,804 JPY	2,962,996 JPY	422,202,800 JPY
04.2022	1,679	893,137,006 JPY	7,260,394 JPY	900,397,400 JPY	187,209,446 JPY	2,206,454 JPY	189,415,900 JPY
05.2022	1,432	698,565,603 JPY	5,413,597 JPY	703,979,200 JPY	194,571,403 JPY	1,846,797 JPY	196,418,200 JPY
06.2022	1,149	495,450,192 JPY	3,927,908 JPY	499,378,100 JPY	203,115,411 JPY	1,485,689 JPY	204,601,100 JPY
07.2022	863	357,734,738 JPY	2,833,062 JPY	360,567,800 JPY	137,715,454 JPY	1,094,846 JPY	138,810,300 JPY
08.2022	692	259,467,858 JPY	2,022,542 JPY	261,490,400 JPY	98,266,880 JPY	810,520 JPY	99,077,400 JPY
09.2022	500	149,060,194 JPY	1,413,806 JPY	150,474,000 JPY	110,407,664 JPY	608,736 JPY	111,016,400 JPY
10.2022	321	83,834,066 JPY	1,035,934 JPY	84,870,000 JPY	65,226,128 JPY	377,872 JPY	65,604,000 JPY
11.2022	224	51,859,074 JPY	810,426 JPY	52,669,500 JPY	31,974,992 JPY	225,508 JPY	32,200,500 JPY
12.2022	170	40,073,610 JPY	656,090 JPY	40,729,700 JPY	11,785,464 JPY	154,336 JPY	11,939,800 JPY
01.2023	145	32,424,082 JPY	536,118 JPY	32,960,200 JPY	7,649,528 JPY	119,972 JPY	7,769,500 JPY
02.2023	132	27,209,200 JPY	438,400 JPY	27,647,600 JPY	5,214,882 JPY	97,718 JPY	5,312,600 JPY
03.2023	113	22,758,033 JPY	355,867 JPY	23,113,900 JPY	4,451,167 JPY	82,533 JPY	4,533,700 JPY
04.2023	91	19,072,553 JPY	286,347 JPY	19,358,900 JPY	3,685,480 JPY	69,520 JPY	3,755,000 JPY
05.2023	82	15,704,375 JPY	227,825 JPY	15,932,200 JPY	3,368,178 JPY	58,522 JPY	3,426,700 JPY
06.2023	63	12,423,429 JPY	179,371 JPY	12,602,800 JPY	3,280,946 JPY	48,454 JPY	3,329,400 JPY
07.2023	48	9,276,925 JPY	140,475 JPY	9,417,400 JPY	3,146,504 JPY	38,896 JPY	3,185,400 JPY
08.2023	42	7,083,256 JPY	111,244 JPY	7,194,500 JPY	2,193,669 JPY	29,231 JPY	2,222,900 JPY
09.2023	35	5,654,553 JPY	88,847 JPY	5,743,400 JPY	1,428,703 JPY	22,397 JPY	1,451,100 JPY
10.2023	23	4,697,022 JPY	70,878 JPY	4,767,900 JPY	957,531 JPY	17,969 JPY	975,500 JPY
11.2023	13	4,166,883 JPY	55,917 JPY	4,222,800 JPY	530,139 JPY	14,961 JPY	545,100 JPY
12.2023	12	2,868,255 JPY	42,645 JPY	2,910,900 JPY	1,298,628 JPY	13,272 JPY	1,311,900 JPY
01.2024	10	2,314,191 JPY	33,509 JPY	2,347,700 JPY	554,064 JPY	9,136 JPY	563,200 JPY
02.2024	9	1,952,261 JPY	26,139 JPY	1,978,400 JPY	361,930 JPY	7,370 JPY	369,300 JPY
03.2024	7	1,670,980 JPY	19,920 JPY	1,690,900 JPY	281,281 JPY	6,219 JPY	287,500 JPY
04.2024	6	1,442,602 JPY	14,598 JPY	1,457,200 JPY	228,378 JPY	5,322 JPY	233,700 JPY
05.2024	5	1,264,097 JPY	10,003 JPY	1,274,100 JPY	178,505 JPY	4,595 JPY	183,100 JPY
06.2024	5	1,085,024 JPY	5,976 JPY	1,091,000 JPY	179,073 JPY	4,027 JPY	183,100 JPY
07.2024	5	415,380 JPY	2,520 JPY	417,900 JPY	669,644 JPY	3,456 JPY	673,100 JPY
08.2024	4	263,803 JPY	1,197 JPY	265,000 JPY	151,577 JPY	1,323 JPY	152,900 JPY
09.2024	4	111,744 JPY	356 JPY	112,100 JPY	152,059 JPY	841 JPY	152,900 JPY
10.2024	3	0 JPY	0 JPY	0 JPY	111,744 JPY	356 JPY	112,100 JPY

Run Out Schedule

ROS on the relevant EoP on 2019/01/10

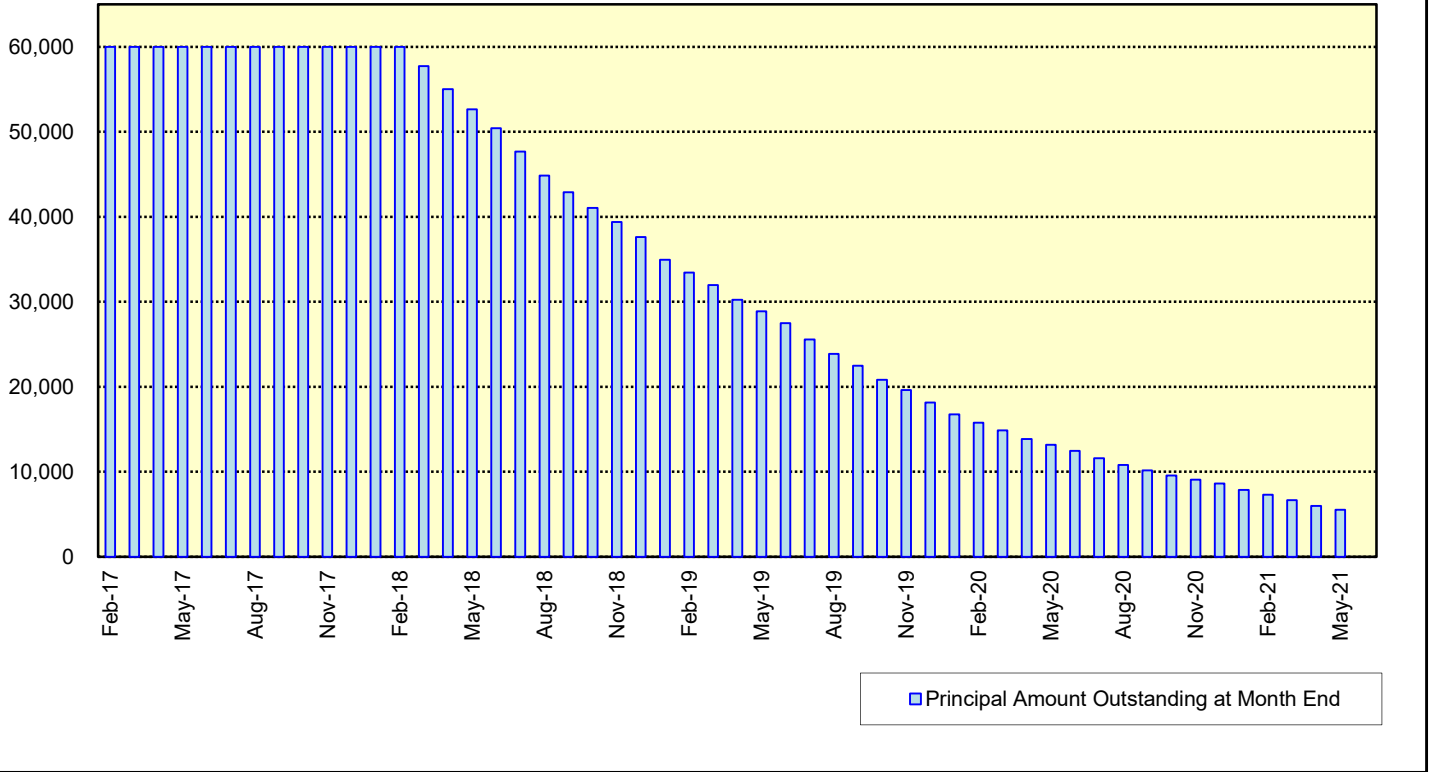
Next Payment Month	Number of Contracts	ABS Outstanding Principal	ABS Outstanding Interest	Outstanding Installment	ABS Remaining Principal	ABS Remaining Interest	ABS Remaining Installment
12.2018	24,614	39,494,739,541 JPY	1,208,966,559 JPY	40,703,706,100 JPY	0 JPY	0 JPY	0 JPY
01.2019	24,614	38,084,937,894 JPY	1,138,724,106 JPY	39,223,662,000 JPY	1,409,801,647 JPY	70,242,453 JPY	1,480,044,100 JPY
02.2019	24,189	36,747,743,944 JPY	1,071,014,156 JPY	37,818,758,100 JPY	1,337,193,950 JPY	67,709,950 JPY	1,404,903,900 JPY
03.2019	23,584	35,031,557,289 JPY	1,005,649,811 JPY	36,037,207,100 JPY	1,716,186,655 JPY	65,364,345 JPY	1,781,551,000 JPY
04.2019	22,611	33,755,567,977 JPY	943,246,123 JPY	34,698,814,100 JPY	1,275,989,312 JPY	62,403,688 JPY	1,338,393,000 JPY
05.2019	22,146	32,379,369,823 JPY	883,021,977 JPY	33,262,391,800 JPY	1,376,198,154 JPY	60,224,146 JPY	1,436,422,300 JPY
06.2019	21,532	30,368,212,070 JPY	825,125,130 JPY	31,193,337,200 JPY	2,011,157,753 JPY	57,896,847 JPY	2,069,054,600 JPY
07.2019	20,721	28,596,402,337 JPY	770,593,763 JPY	29,366,996,100 JPY	1,771,809,733 JPY	54,531,367 JPY	1,826,341,100 JPY
08.2019	20,104	27,149,747,966 JPY	719,073,734 JPY	27,868,821,700 JPY	1,446,654,371 JPY	51,520,029 JPY	1,498,174,400 JPY
09.2019	19,450	25,378,319,199 JPY	669,898,901 JPY	26,048,218,100 JPY	1,771,428,767 JPY	49,174,833 JPY	1,820,603,600 JPY
10.2019	18,488	24,090,613,030 JPY	623,442,170 JPY	24,714,055,200 JPY	1,287,706,169 JPY	46,456,731 JPY	1,334,162,900 JPY
11.2019	17,858	22,461,554,276 JPY	579,082,024 JPY	23,040,636,300 JPY	1,629,058,754 JPY	44,360,146 JPY	1,673,418,900 JPY
12.2019	17,009	20,913,442,038 JPY	537,187,462 JPY	21,450,629,500 JPY	1,548,112,238 JPY	41,894,562 JPY	1,590,006,800 JPY
01.2020	16,539	19,876,691,692 JPY	498,024,308 JPY	20,374,716,000 JPY	1,036,750,346 JPY	39,163,154 JPY	1,079,913,500 JPY
02.2020	16,149	18,892,135,649 JPY	460,700,551 JPY	19,352,836,200 JPY	984,556,043 JPY	37,323,757 JPY	1,021,879,800 JPY
03.2020	15,601	17,714,890,067 JPY	425,086,133 JPY	18,139,976,200 JPY	1,177,245,582 JPY	35,614,418 JPY	1,212,860,000 JPY
04.2020	14,860	16,987,121,103 JPY	391,401,197 JPY	17,378,522,300 JPY	727,768,964 JPY	33,684,936 JPY	761,453,900 JPY
05.2020	14,596	16,210,381,304 JPY	359,029,596 JPY	16,569,410,900 JPY	776,739,799 JPY	32,371,601 JPY	809,111,400 JPY
06.2020	14,216	15,201,659,925 JPY	328,039,275 JPY	15,529,699,200 JPY	1,008,721,379 JPY	30,990,321 JPY	1,039,711,700 JPY
07.2020	13,802	14,297,175,446 JPY	298,904,354 JPY	14,596,079,800 JPY	904,484,479 JPY	29,134,921 JPY	933,619,400 JPY
08.2020	13,510	13,547,405,816 JPY	271,506,384 JPY	13,818,912,200 JPY	749,769,630 JPY	27,397,700 JPY	777,167,600 JPY
09.2020	13,138	12,871,032,553 JPY	245,492,347 JPY	13,116,524,900 JPY	676,373,263 JPY	26,014,037 JPY	702,387,300 JPY
10.2020	12,723	12,327,270,695 JPY	220,747,305 JPY	12,548,018,000 JPY	543,761,858 JPY	24,745,042 JPY	568,506,900 JPY
11.2020	12,470	11,790,887,368 JPY	197,080,332 JPY	11,987,967,700 JPY	536,383,327 JPY	23,666,937 JPY	560,050,300 JPY
12.2020	12,185	10,865,420,894 JPY	174,474,706 JPY	11,039,895,600 JPY	925,466,474 JPY	22,605,626 JPY	948,072,100 JPY
01.2021	11,829	10,133,121,724 JPY	153,714,376 JPY	10,286,836,100 JPY	732,299,170 JPY	20,760,330 JPY	753,059,500 JPY
02.2021	11,352	9,350,094,568 JPY	134,346,232 JPY	9,484,440,800 JPY	783,027,156 JPY	19,368,144 JPY	802,395,300 JPY
03.2021	10,627	8,443,099,083 JPY	116,458,717 JPY	8,559,557,800 JPY	906,995,485 JPY	17,887,515 JPY	924,883,000 JPY
04.2021	9,604	7,892,243,505 JPY	100,251,895 JPY	7,992,495,400 JPY	550,855,578 JPY	16,206,822 JPY	567,062,400 JPY
05.2021	9,106	7,272,155,023 JPY	85,143,577 JPY	7,357,298,600 JPY	620,088,482 JPY	15,108,318 JPY	635,196,800 JPY
06.2021	8,416	6,501,407,600 JPY	71,246,900 JPY	6,572,654,500 JPY	770,747,423 JPY	13,896,677 JPY	784,644,100 JPY
07.2021	7,674	5,650,628,195 JPY	58,905,005 JPY	5,709,533,200 JPY	850,779,405 JPY	12,341,895 JPY	863,121,300 JPY
08.2021	6,919	4,899,786,555 JPY	48,199,045 JPY	4,947,985,600 JPY	750,841,640 JPY	10,705,960 JPY	761,547,600 JPY
09.2021	6,062	3,937,488,742 JPY	38,865,658 JPY	3,976,354,400 JPY	962,297,813 JPY	9,333,387 JPY	971,631,200 JPY
10.2021	4,901	3,314,434,806 JPY	31,333,394 JPY	3,345,768,200 JPY	623,053,936 JPY	7,532,264 JPY	630,586,200 JPY
11.2021	4,185	2,533,580,727 JPY	24,955,473 JPY	2,558,536,200 JPY	780,854,079 JPY	6,377,921 JPY	787,232,000 JPY
12.2021	3,222	2,104,378,028 JPY	19,988,372 JPY	2,124,366,400 JPY	429,202,699 JPY	4,967,101 JPY	434,169,800 JPY
01.2022	2,878	1,796,621,783 JPY	15,851,317 JPY	1,812,473,100 JPY	307,756,245 JPY	4,137,055 JPY	311,893,300 JPY
02.2022	2,578	1,485,322,702 JPY	12,318,698 JPY	1,497,641,400 JPY	311,299,081 JPY	3,532,619 JPY	314,831,700 JPY
03.2022	2,224	1,072,344,457 JPY	9,386,643 JPY	1,081,731,100 JPY	412,978,245 JPY	2,932,055 JPY	415,910,300 JPY
04.2022	1,664	885,829,116 JPY	7,198,584 JPY	893,027,700 JPY	186,515,341 JPY	2,188,059 JPY	188,703,400 JPY
05.2022	1,417	692,406,784 JPY	5,368,516 JPY	697,775,300 JPY	193,422,332 JPY	1,830,068 JPY	195,252,400 JPY
06.2022	1,137	491,638,667 JPY	3,897,433 JPY	495,536,100 JPY	200,768,117 JPY	1,471,083 JPY	202,239,200 JPY
07.2022	854	354,977,359 JPY	2,812,141 JPY	357,789,500 JPY	136,661,308 JPY	1,085,292 JPY	137,746,600 JPY
08.2022	685	257,168,684 JPY	2,008,516 JPY	259,177,200 JPY	97,808,675 JPY	803,625 JPY	98,612,300 JPY
09.2022	493	148,051,370 JPY	1,405,430 JPY	149,456,800 JPY	109,117,314 JPY	603,086 JPY	109,720,400 JPY
10.2022	316	83,036,328 JPY	1,030,672 JPY	84,067,000 JPY	65,015,042 JPY	374,758 JPY	65,389,800 JPY
11.2022	219	51,273,061 JPY	807,639 JPY	52,080,700 JPY	31,763,267 JPY	223,033 JPY	31,986,300 JPY
12.2022	166	39,874,163 JPY	655,137 JPY	40,529,300 JPY	11,398,898 JPY	152,502 JPY	11,551,400 JPY
01.2023	143	32,324,200 JPY	535,800 JPY	32,860,000 JPY	7,549,963 JPY	119,337 JPY	7,669,300 JPY
02.2023	130	27,209,200 JPY	438,400 JPY	27,647,600 JPY	5,115,000 JPY	97,400 JPY	5,212,400 JPY
03.2023	113	22,758,033 JPY	355,867 JPY	23,113,900 JPY	4,451,167 JPY	82,533 JPY	4,533,700 JPY
04.2023	91	19,072,553 JPY	286,347 JPY	19,358,900 JPY	3,685,480 JPY	69,520 JPY	3,755,000 JPY
05.2023	82	15,704,375 JPY	227,825 JPY	15,932,200 JPY	3,368,178 JPY	58,522 JPY	3,426,700 JPY
06.2023	63	12,423,429 JPY	179,371 JPY	12,602,800 JPY	3,280,946 JPY	48,454 JPY	3,329,400 JPY
07.2023	48	9,276,925 JPY	140,475 JPY	9,417,400 JPY	3,146,504 JPY	38,896 JPY	3,185,400 JPY
08.2023	42	7,083,256 JPY	111,244 JPY	7,194,500 JPY	2,193,669 JPY	29,231 JPY	2,222,900 JPY
09.2023	35	5,654,553 JPY	88,847 JPY	5,743,400 JPY	1,428,703 JPY	22,397 JPY	1,451,100 JPY
10.2023	23	4,697,022 JPY	70,878 JPY	4,767,900 JPY	957,531 JPY	17,969 JPY	975,500 JPY
11.2023	13	4,166,883 JPY	55,917 JPY	4,222,800 JPY	530,139 JPY	14,961 JPY	545,100 JPY
12.2023	12	2,868,255 JPY	42,645 JPY	2,910,900 JPY	1,298,628 JPY	13,272 JPY	1,311,900 JPY
01.2024	10	2,314,191 JPY	33,509 JPY	2,347,700 JPY	554,064 JPY	9,136 JPY	563,200 JPY
02.2024	9	1,952,261 JPY	26,139 JPY	1,978,400 JPY	361,930 JPY	7,370 JPY	369,300 JPY
03.2024	7	1,670,980 JPY	19,920 JPY	1,690,900 JPY	281,281 JPY	6,219 JPY	287,500 JPY
04.2024	6	1,442,602 JPY	14,598 JPY	1,457,200 JPY	228,378 JPY	5,322 JPY	233,700 JPY
05.2024	5	1,264,097 JPY	10,003 JPY	1,274,100 JPY	178,505 JPY	4,595 JPY	183,100 JPY
06.2024	5	1,085,024 JPY	5,976 JPY	1,091,000 JPY	179,073 JPY	4,027 JPY	183,100 JPY
07.2024	5	415,380 JPY	2,520 JPY	417,900 JPY	669,644 JPY	3,456 JPY	673,100 JPY
08.2024	4	263,803 JPY	1,197 JPY	265,000 JPY	151,577 JPY	1,323 JPY	152,900 JPY
09.2024	4	111,744 JPY	356 JPY	112,100 JPY	152,059 JPY	841 JPY	152,900 JPY
10.2024	3	0 JPY	0 JPY	0 JPY	111,744 JPY	356 JPY	112,100 JPY

Expected Amortisation

Expected Amortization to the Second Trust

JPY mil.

Assuming a Clean-Up Call at 10% of the Initial Outstanding Balance, annual prepayments of 10% and 0% defaults.



Distribution by Sub-Servicer

Sub-Servicer	Number of Loans	Percentage of Loans	Outstanding Principal Balance	Percentage of Balance
Cedyna	14,370	58.38 %	23,493,387,067 JPY	59.48 %
Jaccs	10,244	41.62 %	16,001,352,474 JPY	40.52 %
Total	24,614	100.00 %	39,494,739,541 JPY	100.00 %

Distribution by Brand

Make	Number of Loans	Percentage of Loans	Outstanding Discounted Principal Balance	Percentage of Balance
VW	15,885	64.54 %	21,842,159,219 JPY	55.30 %
Audi	8,711	35.39 %	17,613,436,589 JPY	44.60 %
Bentley	10	0.04 %	33,855,264 JPY	0.09 %
Lamborghini	0	0.00 %	0 JPY	0.00 %
Other	8	0.03 %	5,288,469 JPY	0.01 %
Total	24,614	100.00 %	39,494,739,541 JPY	100.00 %

Distribution by New and Used
Distribution by New and Used

New or Used	Number of Loans	Percentage of Loans	Outstanding Discounted Principal Balance	Percentage of Balance
New	16,437	66.78 %	30,647,717,578 JPY	77.60 %
Used	7,223	29.35 %	8,461,219,228 JPY	21.42 %
Used (Prolonged)	954	3.88 %	385,802,735 JPY	0.98 %
Total	24,614	100.00 %	39,494,739,541 JPY	100.00 %

Distribution by Brand New and Used

New or Used	Number of Loans	Percentage of Loans	Outstanding Discounted Principal Balance	Percentage of Balance
VW New	11,272	45.80 %	18,061,330,672 JPY	45.73 %
VW Used	3,956	16.07 %	3,598,964,177 JPY	9.11 %
VW Used (Prolonged)	657	2.67 %	181,864,370 JPY	0.46 %
Audi New	5,159	20.96 %	12,568,808,757 JPY	31.82 %
Audi Used	3,255	13.22 %	4,840,689,467 JPY	12.26 %
Audi Used (Prolonged)	297	1.21 %	203,938,365 JPY	0.52 %
Other	18	0.07 %	39,143,733 JPY	0.10 %
Total	24,614	100.00 %	39,494,739,541 JPY	100.00 %

Distribution by Product Type

Loan Type List

Loan Type	Description
100	Volkswagen Owner's Plan
100	Audi Owner's Plan
100	Lamborghini Auto Loan
100	Bentley Auto Loan
101	Twin Loan
105	Refinanced Volkswagen Solutions
106	Refinanced Volkswagen Das Welt Auto with refinance option *
106	Refinanced Audi S-Loan/ S-Loan Plus
106	Refinanced Lamborghini Hyper Premium Plan
106	Refinanced Bentley My Flying B
140	Volkswagen Solutions
150	Volkswagen Das Welt Auto with refinance option **
150	Audi S-Loan
150	Lamborghini Hyper Premium Plan
150	Bentley My Flying B
151	Audi S-Loan Plus

(*) The name was changed from "Refinanced Volkswagen GUC with refinance option" effective from 1 February 2012.

No other changes were made to auto loan agreements.

(**) The name was changed from "Volkswagen GUC with refinance option" effective from 1 February 2012.

No other changes were made to auto loan agreements.

Product Type

Loan Type	Number of Loans	Percentage of Loans	Outstanding Discounted Principal Balance	Percentage of Balance
100	3,581	14.55 %	3,510,810,191 JPY	8.89 %
101	0	0.00 %	0 JPY	0.00 %
105	640	2.60 %	179,670,447 JPY	0.45 %
106	314	1.28 %	206,132,288 JPY	0.52 %
140-VFJ	1,626	6.61 %	2,610,994,026 JPY	6.61 %
140-Dealer	8,796	35.74 %	14,584,336,770 JPY	36.93 %
150	9,247	37.57 %	17,419,904,862 JPY	44.11 %
151	410	1.67 %	982,890,957 JPY	2.49 %
Total	24,614	100.00 %	39,494,739,541 JPY	100.00 %

Credit Type

Credit Type	Number of Loans	Percentage of Loans	Outstanding Discounted Principal Balance	Percentage of Balance
Balloon Type Loan	20,079	81.58 %	35,598,126,615 JPY	90.13 %
Equal Instalment Type Loan	4,535	18.42 %	3,896,612,926 JPY	9.87 %
Total	24,614	100.00 %	39,494,739,541 JPY	100.00 %

Distribution by RV

Loan Type	Number of Loans	Percentage of Balance	Outstanding Discounted Principal Balance
100/101/105/106	4,535	9.87 %	3,896,612,926 JPY
140-VFJ (excl. balloon)		3.35 %	1,322,678,092 JPY
140-VFJ (balloon)		3.26 %	1,288,315,934 JPY
140-VFJ	1,626	6.61 %	2,610,994,026 JPY
140-Dealer (excl. balloon)		18.62 %	7,352,968,173 JPY
140-Dealer (balloon)		18.31 %	7,231,368,597 JPY
140-Dealer	8,796	36.93 %	14,584,336,770 JPY
150 (excl. balloon)		17.21 %	6,795,390,455 JPY
150 (balloon)		26.90 %	10,624,514,407 JPY
150	9,247	44.11 %	17,419,904,862 JPY
151 (excl. balloon)		0.49 %	193,372,033 JPY
151 (balloon)		2.00 %	789,518,924 JPY
151	410	2.49 %	982,890,957 JPY
Total	24,614	100.00 %	39,494,739,541 JPY

Type of Payment Portion	Percentage of Balance	Outstanding Discounted Principal Balance
Monthly Installment Portion	49.53 %	19,561,021,679 JPY
Balloon Portion	50.47 %	19,933,717,862 JPY
Total	100.00 %	39,494,739,541 JPY

Distribution by Brand New and Used
Audi

New or Used	Number of Loans	Percentage of Loans	Outstanding Discounted Principal Balance	Percentage of Balance
New	5,159	59.22 %	12,568,808,757 JPY	71.36 %
Used	3,552	40.78 %	5,044,627,832 JPY	28.64 %
Total	8,711	100.00 %	17,613,436,589 JPY	100.00 %

Bentley

New or Used	Number of Loans	Percentage of Loans	Outstanding Discounted Principal Balance	Percentage of Balance
New	6	60.00 %	17,578,149 JPY	51.92 %
Used	4	40.00 %	16,277,115 JPY	48.08 %
Total	10	100.00 %	33,855,264 JPY	100.00 %

Lamborghini

New or Used	Number of Loans	Percentage of Loans	Outstanding Discounted Principal Balance	Percentage of Balance
New	0	0.00 %	0 JPY	0.00 %
Used	0	0.00 %	0 JPY	0.00 %
Total	0	0.00 %	0 JPY	0.00 %

VW

New or Used	Number of Loans	Percentage of Loans	Outstanding Discounted Principal Balance	Percentage of Balance
New	11,272	70.96 %	18,061,330,672 JPY	82.69 %
Used	4,613	29.04 %	3,780,828,547 JPY	17.31 %
Total	15,885	100.00 %	21,842,159,219 JPY	100.00 %

OTHER

New or Used	Number of Loans	Percentage of Loans	Outstanding Discounted Principal Balance	Percentage of Balance
New	0	0.00 %	0 JPY	0.00 %
Used	8	100.00 %	5,288,469 JPY	100.00 %
Total	8	100.00 %	5,288,469 JPY	100.00 %

Distribution by Customer Type

Customer Type

Customer Type	Number of Loans	Percentage of Loans	Outstanding Discounted Principal Balance	Percentage of Balance
Retail	22,283	90.53 %	34,218,792,929 JPY	86.64 %
Corporate	2,331	9.47 %	5,275,946,612 JPY	13.36 %
Total	24,614	100.00 %	39,494,739,541 JPY	100.00 %

Distribution by Outstanding Discounted Principal Balance

Outstanding Discounted Principal Balance	Number of Loans	Percentage of Loans	Outstanding Discounted Principal Balance	Percentage of Balance
<= 500,000 JPY	2,686	10.91 %	734,597,699 JPY	1.86 %
500,001 JPY - 1,000,000 JPY	4,275	17.37 %	3,263,813,285 JPY	8.26 %
1,000,001 JPY - 1,500,000 JPY	5,768	23.43 %	7,259,418,417 JPY	18.38 %
1,500,001 JPY - 2,000,000 JPY	5,146	20.91 %	8,942,959,374 JPY	22.64 %
2,000,001 JPY - 2,500,000 JPY	3,122	12.68 %	6,933,885,246 JPY	17.56 %
2,500,001 JPY - 3,000,000 JPY	1,479	6.01 %	4,025,327,659 JPY	10.19 %
3,000,001 JPY - 3,500,000 JPY	886	3.60 %	2,866,613,410 JPY	7.26 %
3,500,001 JPY - 4,000,000 JPY	558	2.27 %	2,083,040,251 JPY	5.27 %
4,000,001 JPY - 4,500,000 JPY	300	1.22 %	1,271,625,375 JPY	3.22 %
4,500,001 JPY - 5,000,000 JPY	166	0.67 %	785,153,924 JPY	1.99 %
5,000,001 JPY - 6,000,000 JPY	159	0.65 %	863,288,276 JPY	2.19 %
6,000,001 JPY - 7,000,000 JPY	53	0.22 %	342,339,758 JPY	0.87 %
7,000,001 JPY - 8,000,000 JPY	12	0.05 %	88,486,647 JPY	0.22 %
8,000,001 JPY - 9,000,000 JPY	4	0.02 %	34,190,220 JPY	0.09 %
9,000,001 JPY - 10,000,000 JPY	0	0.00 %	0 JPY	0.00 %
>= 10,000,001 JPY	0	0.00 %	0 JPY	0.00 %
Total	24,614	100.00 %	39,494,739,541 JPY	100.00 %

Statistics

Minimum Outstanding Discounted Principal Balance	8,574 JPY
Maximum Outstanding Discounted Principal Balance	8,783,735 JPY
Average Outstanding Discounted Principal Balance	1,604,564 JPY

Distribution by Original Principal Amount

Original Principal Balance	Number of Loans	Percentage of Loans	Outstanding Discounted Principal Balance	Percentage of Balance
<= 500,000 JPY	125	0.51 %	21,743,849 JPY	0.06 %
500,001 JPY - 1,000,000 JPY	1,381	5.61 %	510,849,812 JPY	1.29 %
1,000,001 JPY - 1,500,000 JPY	2,647	10.75 %	1,770,772,091 JPY	4.48 %
1,500,001 JPY - 2,000,000 JPY	4,028	16.36 %	4,043,490,718 JPY	10.24 %
2,000,001 JPY - 2,500,000 JPY	4,208	17.10 %	5,577,426,388 JPY	14.12 %
2,500,001 JPY - 3,000,000 JPY	4,085	16.60 %	6,649,144,011 JPY	16.84 %
3,000,001 JPY - 3,500,000 JPY	2,868	11.65 %	5,549,800,794 JPY	14.05 %
3,500,001 JPY - 4,000,000 JPY	1,834	7.45 %	4,128,083,958 JPY	10.45 %
4,000,001 JPY - 4,500,000 JPY	1,022	4.15 %	2,643,024,194 JPY	6.69 %
4,500,001 JPY - 5,000,000 JPY	773	3.14 %	2,236,366,832 JPY	5.66 %
5,000,001 JPY - 6,000,000 JPY	776	3.15 %	2,590,967,731 JPY	6.56 %
6,000,001 JPY - 7,000,000 JPY	434	1.76 %	1,693,770,459 JPY	4.29 %
7,000,001 JPY - 8,000,000 JPY	196	0.80 %	856,504,290 JPY	2.17 %
8,000,001 JPY - 9,000,000 JPY	112	0.46 %	550,502,395 JPY	1.39 %
9,000,001 JPY - 10,000,000 JPY	64	0.26 %	358,732,959 JPY	0.91 %
>= 10,000,001 JPY	61	0.25 %	313,559,060 JPY	0.79 %
Total	24,614	100.00 %	39,494,739,541 JPY	100.00 %

Statistics

Minimum Original Principal Balance	170,000 JPY
Maximum Original Principal Balance	25,000,000 JPY
Average Original Principal Balance	2,761,508 JPY

Distribution by Interest Rate paid by the Obligor

Interest Rate paid by the Obligor	Number of Loans	Percentage of Loans	Outstanding Discounted Principal Balance	Percentage of Balance
< 0.900 %	547	2.22 %	1,189,606,506 JPY	3.01 %
0.900 % < 1.500 %	4,645	18.87 %	8,985,946,989 JPY	22.75 %
1.500 % < 2.000 %	9,185	37.32 %	15,891,166,990 JPY	40.24 %
2.000 % < 2.500 %	239	0.97 %	343,335,826 JPY	0.87 %
2.500 % < 3.000 %	5,801	23.57 %	8,711,928,790 JPY	22.06 %
3.000 % < 3.500 %	963	3.91 %	613,823,848 JPY	1.55 %
3.500 % < 4.000 %	3,203	13.01 %	3,733,170,044 JPY	9.45 %
4.000 % < 4.500 %	31	0.13 %	25,760,548 JPY	0.07 %
4.500 % < 5.000 %	0	0.00 %	0 JPY	0.00 %
5.000 % or more	0	0.00 %	0 JPY	0.00 %
Total	24,614	100.00 %	39,494,739,541 JPY	100.00 %

Statistics	
Minimum Interest Rate	0.00 %
Maximum Interest Rate	4.49 %
Weighted Average Interest Rate	2.08 %

Distribution by Original Term

Length of Original Term (months)	Number of Loans	Percentage of Loans	Outstanding Discounted Principal Balance	Percentage of Balance
6 - 12	0	0.00 %	0 JPY	0.00 %
13 - 18	6	0.02 %	494,721 JPY	0.00 %
19 - 24	300	1.22 %	98,367,062 JPY	0.25 %
25 - 30	55	0.22 %	14,826,602 JPY	0.04 %
31 - 36	8,148	33.10 %	14,088,276,067 JPY	35.67 %
37 - 42	65	0.26 %	29,987,623 JPY	0.08 %
43 - 48	1,402	5.70 %	1,368,993,728 JPY	3.47 %
49 - 54	24	0.10 %	21,102,604 JPY	0.05 %
55 - 60	13,827	56.18 %	22,622,501,336 JPY	57.28 %
61 - 66	18	0.07 %	21,628,783 JPY	0.05 %
67 - 72	609	2.47 %	886,723,143 JPY	2.25 %
73 - 84	160	0.65 %	341,837,872 JPY	0.87 %
Total	24,614	100.00 %	39,494,739,541 JPY	100.00 %

Statistics	
Minimum Original Term in months	18
Maximum Original Term in months	84
Weighted Average Original Term in months	51.38

Distribution by Remaining Term

Length of Remaining Term (months)	Number of Loans	Percentage of Loans	Outstanding Discounted Principal Balance	Percentage of Balance
<= 12	8,075	32.81 %	11,066,779,215 JPY	28.02 %
13 - 18	2,737	11.12 %	4,186,094,160 JPY	10.60 %
19 - 24	1,973	8.02 %	2,884,303,826 JPY	7.30 %
25 - 30	4,155	16.88 %	6,483,768,567 JPY	16.42 %
31 - 36	4,796	19.48 %	8,846,162,623 JPY	22.40 %
37 - 42	2,024	8.22 %	4,114,436,635 JPY	10.42 %
43 - 48	711	2.89 %	1,580,614,209 JPY	4.00 %
49 - 54	95	0.39 %	204,704,096 JPY	0.52 %
55 - 60	38	0.15 %	96,644,587 JPY	0.24 %
61 - 66	5	0.02 %	14,909,951 JPY	0.04 %
67 - 72	5	0.02 %	16,321,672 JPY	0.04 %
73 - 84	0	0.00 %	0 JPY	0.00 %
Total	24,614	100.00 %	39,494,739,541 JPY	100.00 %

Statistics	
Minimum Remaining Term in months	1
Maximum Remaining Term in months	70
Weighted Average Remaining Term in months	23.57

Distribution by Seasoning

Seasoning (months)	Number of Loans	Percentage of Loans	Outstanding Discounted Principal Balance	Percentage of Balance
<= 12	0	0.00 %	0 JPY	0.00 %
13 - 18	1,664	6.76 %	3,428,863,327 JPY	8.68 %
19 - 24	4,071	16.54 %	7,683,324,665 JPY	19.45 %
25 - 30	9,472	38.48 %	16,562,029,013 JPY	41.93 %
31 - 36	6,215	25.25 %	8,995,957,363 JPY	22.78 %
37 - 42	1,050	4.27 %	1,213,160,999 JPY	3.07 %
43 - 48	924	3.75 %	811,151,121 JPY	2.05 %
49 - 54	599	2.43 %	453,316,729 JPY	1.15 %
55 - 60	577	2.34 %	328,469,013 JPY	0.83 %
61 - 66	21	0.09 %	12,823,046 JPY	0.03 %
67 - 72	19	0.08 %	4,870,802 JPY	0.01 %
73 - 84	2	0.01 %	773,463 JPY	0.00 %
Total	24,614	100.00 %	39,494,739,541 JPY	100.00 %

Statistics	
Minimum Seasoning in months	13
Maximum Seasoning in months	75
Weighted Average Seasoning in months	27.82

Distribution by Type of Car
Type of Car

Type of Car	Number of Loans	Percentage of Loans	Outstanding Discounted Principal Balance	Percentage of Balance
New	16,437	66.78 %	30,647,717,578 JPY	77.60 %
Used	8,177	33.22 %	8,847,021,963 JPY	22.40 %
Total	24,614	100.00 %	39,494,739,541 JPY	100.00 %

Type of Car: Only Balloon Loans

Type of Car	Number of Loans	Percentage of Loans	Outstanding Discounted Principal Balance	Percentage of Balance
New	15,394	76.67 %	29,505,031,588 JPY	82.88 %
Used	4,685	23.33 %	6,093,095,027 JPY	17.12 %
Total	20,079	100.00 %	35,598,126,615 JPY	100.00 %

Type of Car: Only Equal Instalment Loans

Type of Car	Number of Loans	Percentage of Loans	Outstanding Discounted Principal Balance	Percentage of Balance
New	1,043	23.00 %	1,142,685,990 JPY	29.33 %
Used	3,492	77.00 %	2,753,926,936 JPY	70.67 %
Total	4,535	100.00 %	3,896,612,926 JPY	100.00 %

Distribution by Brand and Model

Make	Model	Number of Loans	Percentage of Loans	Outstanding Discounted Principal Balance	Percentage of Balance
Audi	A1	805	3.27 %	931,852,675 JPY	2.36 %
	A3	2,227	9.05 %	3,301,989,977 JPY	8.36 %
	A4	1,821	7.40 %	3,954,666,848 JPY	10.01 %
	A5	409	1.66 %	909,587,036 JPY	2.30 %
	A6	533	2.17 %	1,271,882,644 JPY	3.22 %
	A7	207	0.84 %	636,781,197 JPY	1.61 %
	A8	60	0.24 %	195,859,691 JPY	0.50 %
	S1	81	0.33 %	146,644,827 JPY	0.37 %
	S3	277	1.13 %	656,372,222 JPY	1.66 %
	S4	75	0.30 %	212,494,461 JPY	0.54 %
	S5	43	0.17 %	123,917,721 JPY	0.31 %
	S6	30	0.12 %	113,123,253 JPY	0.29 %
	S7	18	0.07 %	61,084,468 JPY	0.15 %
	S8	13	0.05 %	51,661,859 JPY	0.13 %
	RS3	32	0.13 %	101,997,661 JPY	0.26 %
	RS4	12	0.05 %	35,778,861 JPY	0.09 %
	RS5	11	0.04 %	40,249,402 JPY	0.10 %
	RS6	11	0.04 %	42,573,192 JPY	0.11 %
	RS7	10	0.04 %	41,350,317 JPY	0.10 %
	Q2	58	0.24 %	151,733,265 JPY	0.38 %
	Q3	719	2.92 %	1,345,662,429 JPY	3.41 %
	Q5	432	1.76 %	1,037,885,757 JPY	2.63 %
	Q7	168	0.68 %	690,686,477 JPY	1.75 %
	RSQ3	20	0.08 %	74,061,648 JPY	0.19 %
	TT	631	2.56 %	1,449,176,018 JPY	3.67 %
	R8	8	0.03 %	34,362,683 JPY	0.09 %
AUDI OTHERS	0	0.00 %	0 JPY	0.00 %	
	Subtotal	8,711	35.39 %	17,613,436,589 JPY	44.60 %
Bentley	ARNAGE	0	0.00 %	0 JPY	0.00 %
	AZURE	0	0.00 %	0 JPY	0.00 %
	BENTAYGA	1	0.00 %	6,538,490 JPY	0.02 %
	CONTINENTAL	8	0.03 %	26,442,929 JPY	0.07 %
	FLYING SPUR	0	0.00 %	0 JPY	0.00 %
	MULSANNE	1	0.00 %	873,845 JPY	0.00 %
	BENTLEY	0	0.00 %	0 JPY	0.00 %
	OTHERS	0	0.00 %	0 JPY	0.00 %
	Subtotal	10	0.04 %	33,855,264 JPY	0.09 %
Lamborghini	AVENTADOR	0	0.00 %	0 JPY	0.00 %
	DIABLO	0	0.00 %	0 JPY	0.00 %
	GALLARDO	0	0.00 %	0 JPY	0.00 %
	HURACÁN	0	0.00 %	0 JPY	0.00 %
	MULCIELAGO	0	0.00 %	0 JPY	0.00 %
	LAMBORGHINI	0	0.00 %	0 JPY	0.00 %
	OTHERS	0	0.00 %	0 JPY	0.00 %
	Subtotal	0	0.00 %	0 JPY	0.00 %
VW	ARTEON	1	0.00 %	3,744,011 JPY	0.01 %
	BEETLE	1,617	6.57 %	2,079,377,474 JPY	5.26 %
	BORA	0	0.00 %	0 JPY	0.00 %
	EOS	0	0.00 %	0 JPY	0.00 %
	GOLF	6,039	24.53 %	8,949,270,288 JPY	22.66 %
	JETTA	8	0.03 %	1,996,530 JPY	0.01 %
	LUPO	1	0.00 %	1,137,500 JPY	0.00 %
	PASSAT	1,417	5.76 %	2,392,789,493 JPY	6.06 %
	POLO	3,293	13.38 %	3,556,615,379 JPY	9.01 %
	SCIROCCO	32	0.13 %	25,445,775 JPY	0.06 %
	SHARAN	558	2.27 %	910,586,999 JPY	2.31 %
	TIGUAN	534	2.17 %	956,252,940 JPY	2.42 %
	TOUAREG	57	0.23 %	114,103,774 JPY	0.29 %
	TOURAN	1,328	5.40 %	2,162,987,464 JPY	5.48 %
	UP	1,000	4.06 %	687,851,592 JPY	1.74 %
	VENTO	0	0.00 %	0 JPY	0.00 %
	VW OTHERS	0	0.00 %	0 JPY	0.00 %
	Subtotal	15,885	64.53 %	21,842,159,219 JPY	55.29 %
Non VW Group Vehicles		8	0.03 %	5,288,469 JPY	0.01 %
	Subtotal	8	0.03 %	5,288,469 JPY	0.01 %
	Total	24,614	100.00 %	39,494,739,541 JPY	100.00 %

Geographic Distribution by Prefecture

Prefecture	Number of Loans	Percentage of Loans	Outstanding Discounted Principal Balance	Percentage of Balance
Tokyo	3,709	15.07 %	6,796,645,772 JPY	17.21 %
Kanagawa	2,393	9.72 %	3,977,898,279 JPY	10.07 %
Aichi	1,763	7.16 %	2,718,067,261 JPY	6.88 %
Saitama	1,593	6.47 %	2,480,711,898 JPY	6.28 %
Osaka	1,447	5.88 %	2,465,289,550 JPY	6.24 %
Chiba	1,120	4.55 %	1,728,393,895 JPY	4.38 %
Fukuoka	1,037	4.21 %	1,691,682,617 JPY	4.28 %
Hokkaido	949	3.86 %	1,627,137,657 JPY	4.12 %
Hyogo	913	3.71 %	1,459,389,204 JPY	3.70 %
Shizuoka	728	2.96 %	1,156,620,228 JPY	2.93 %
Ibaraki	769	3.12 %	1,143,228,692 JPY	2.89 %
Tochigi	554	2.25 %	870,737,866 JPY	2.20 %
Hiroshima	591	2.40 %	862,737,523 JPY	2.18 %
Kyoto	474	1.93 %	718,341,974 JPY	1.82 %
Miyagi	463	1.88 %	717,005,292 JPY	1.82 %
Gunma	501	2.04 %	696,818,356 JPY	1.76 %
Okayama	351	1.43 %	555,799,401 JPY	1.41 %
Nagano	371	1.51 %	537,712,089 JPY	1.36 %
Gifu	362	1.47 %	528,094,432 JPY	1.34 %
Mie	318	1.29 %	458,040,526 JPY	1.16 %
Fukushima	309	1.26 %	432,534,039 JPY	1.10 %
Yamaguchi	262	1.06 %	394,297,732 JPY	1.00 %
Niigata	289	1.17 %	384,710,205 JPY	0.97 %
Oita	224	0.91 %	330,239,640 JPY	0.84 %
Nara	212	0.86 %	325,059,312 JPY	0.82 %
Yamanashi	189	0.77 %	315,948,762 JPY	0.80 %
Ishikawa	196	0.80 %	299,097,564 JPY	0.76 %
Shiga	198	0.80 %	294,432,341 JPY	0.75 %
Kumamoto	201	0.82 %	289,472,425 JPY	0.73 %
Toyama	193	0.78 %	289,457,161 JPY	0.73 %
Kagoshima	177	0.72 %	284,427,324 JPY	0.72 %
Wakayama	160	0.65 %	272,144,459 JPY	0.69 %
Yamagata	185	0.75 %	260,219,046 JPY	0.66 %
Fukui	153	0.62 %	250,058,251 JPY	0.63 %
Iwate	125	0.51 %	189,363,214 JPY	0.48 %
Tokushima	118	0.48 %	187,151,107 JPY	0.47 %
Nagasaki	125	0.51 %	182,802,797 JPY	0.46 %
Kagawa	129	0.52 %	175,037,203 JPY	0.44 %
Miyazaki	112	0.46 %	174,372,844 JPY	0.44 %
Saga	113	0.46 %	173,782,870 JPY	0.44 %
Shimane	90	0.37 %	154,912,725 JPY	0.39 %
Ehime	110	0.45 %	154,600,681 JPY	0.39 %
Aomori	89	0.36 %	130,590,328 JPY	0.33 %
Akita	81	0.33 %	124,855,103 JPY	0.32 %
Tottori	80	0.33 %	106,243,010 JPY	0.27 %
Kouchi	51	0.21 %	75,604,495 JPY	0.19 %
Okinawa	37	0.15 %	52,972,391 JPY	0.13 %
Total	24,614	100.00 %	39,494,739,541 JPY	100.00 %

Distribution by Obligor Concentration

Distribution of Loan Contracts and Vehicles per Obligor

Contract Concentration	Number of Customers	Percentage of Customers	Number of Loans	Percentage of Loans	Outstanding Discounted Principal Balance	Percentage of Balance
1	23,706	96.72 %	23,706	96.31 %	37,749,269,101 JPY	95.58 %
2	748	3.05 %	839	3.41 %	1,572,007,662 JPY	3.98 %
3	49	0.20 %	58	0.24 %	152,275,140 JPY	0.39 %
4	5	0.02 %	10	0.04 %	20,136,698 JPY	0.05 %
5	1	0.00 %	1	0.00 %	1,050,940 JPY	0.00 %
6 - 10	0	0.00 %	0	0.00 %	0 JPY	0.00 %
11 or more	0	0.00 %	0	0.00 %	0 JPY	0.00 %
Total	24,509	100.00 %	24,614	100.00 %	39,494,739,541 JPY	100.00 %

Top 20 Obligor

Number	Number of Contracts	Outstanding Discounted Principal Balance	Percentage of Balance
1	2	12,523,786 JPY	0.03 %
2	2	11,207,233 JPY	0.03 %
3	2	11,143,308 JPY	0.03 %
4	2	10,458,103 JPY	0.03 %
5	2	8,800,507 JPY	0.02 %
6	1	8,783,735 JPY	0.02 %
7	1	8,748,125 JPY	0.02 %
8	1	8,388,976 JPY	0.02 %
9	1	8,269,384 JPY	0.02 %
10	2	8,004,251 JPY	0.02 %
11	1	7,716,253 JPY	0.02 %
12	1	7,689,258 JPY	0.02 %
13	2	7,648,457 JPY	0.02 %
14	1	7,597,897 JPY	0.02 %
15	1	7,431,430 JPY	0.02 %
16	1	7,318,126 JPY	0.02 %
17	2	7,299,283 JPY	0.02 %
18	1	7,269,940 JPY	0.02 %
19	1	7,237,928 JPY	0.02 %
20	1	7,190,897 JPY	0.02 %
Total 1 -20	28	170,726,877 JPY	0.43 %

Remarks:

Figures above are calculated based on each of the Sub-Servicers respectively and not across both of the Sub-Servicers.

Distribution by Contract Start Month

Origination Month	Number of Loans	Percentage of Loans	Outstanding Discounted Principal Balance	Percentage of Balance
09.2012	2	0.01 %	773,463 JPY	0.00 %
10.2012	0	0.00 %	0 JPY	0.00 %
11.2012	0	0.00 %	0 JPY	0.00 %
12.2012	3	0.01 %	1,083,488 JPY	0.00 %
01.2013	3	0.01 %	92,273 JPY	0.00 %
02.2013	4	0.02 %	1,401,038 JPY	0.00 %
03.2013	7	0.03 %	2,132,995 JPY	0.01 %
04.2013	2	0.01 %	161,008 JPY	0.00 %
05.2013	0	0.00 %	0 JPY	0.00 %
06.2013	1	0.00 %	271,032 JPY	0.00 %
07.2013	7	0.03 %	2,860,655 JPY	0.01 %
08.2013	3	0.01 %	5,446,588 JPY	0.01 %
09.2013	5	0.02 %	2,099,948 JPY	0.01 %
10.2013	3	0.01 %	791,631 JPY	0.00 %
11.2013	2	0.01 %	1,353,192 JPY	0.00 %
12.2013	8	0.03 %	3,961,017 JPY	0.01 %
01.2014	76	0.31 %	38,801,364 JPY	0.10 %
02.2014	140	0.57 %	72,420,640 JPY	0.18 %
03.2014	209	0.85 %	122,224,065 JPY	0.31 %
04.2014	58	0.24 %	36,575,055 JPY	0.09 %
05.2014	86	0.35 %	54,486,872 JPY	0.14 %
06.2014	121	0.49 %	80,372,689 JPY	0.20 %
07.2014	90	0.37 %	64,763,123 JPY	0.16 %
08.2014	66	0.27 %	51,578,768 JPY	0.13 %
09.2014	135	0.55 %	108,110,479 JPY	0.27 %
10.2014	90	0.37 %	67,970,615 JPY	0.17 %
11.2014	97	0.39 %	80,521,055 JPY	0.20 %
12.2014	143	0.58 %	138,553,106 JPY	0.35 %
01.2015	110	0.45 %	86,892,321 JPY	0.22 %
02.2015	194	0.79 %	170,339,508 JPY	0.43 %
03.2015	216	0.88 %	184,069,713 JPY	0.47 %
04.2015	91	0.37 %	74,954,890 JPY	0.19 %
05.2015	170	0.69 %	156,341,583 JPY	0.40 %
06.2015	176	0.72 %	170,319,032 JPY	0.43 %
07.2015	131	0.53 %	137,411,606 JPY	0.35 %
08.2015	174	0.71 %	189,673,335 JPY	0.48 %
09.2015	230	0.93 %	280,339,250 JPY	0.71 %
10.2015	164	0.67 %	202,696,478 JPY	0.51 %
11.2015	175	0.71 %	232,721,298 JPY	0.59 %
12.2015	374	1.52 %	500,362,634 JPY	1.27 %
01.2016	789	3.21 %	1,082,851,873 JPY	2.74 %
02.2016	1,156	4.70 %	1,649,682,993 JPY	4.18 %
03.2016	1,776	7.22 %	2,526,321,415 JPY	6.40 %
04.2016	891	3.62 %	1,392,528,150 JPY	3.53 %
05.2016	1,229	4.99 %	1,844,210,298 JPY	4.67 %
06.2016	1,428	5.80 %	2,382,260,714 JPY	6.03 %
07.2016	1,327	5.39 %	2,158,846,619 JPY	5.47 %
08.2016	1,566	6.36 %	2,610,283,059 JPY	6.61 %
09.2016	2,045	8.31 %	3,651,413,952 JPY	9.25 %
10.2016	1,297	5.27 %	2,338,203,480 JPY	5.92 %
11.2016	1,809	7.35 %	3,421,021,189 JPY	8.66 %
12.2016	665	2.70 %	1,280,734,365 JPY	3.24 %
01.2017	617	2.51 %	1,119,777,773 JPY	2.84 %
02.2017	741	3.01 %	1,389,833,739 JPY	3.52 %
03.2017	1,109	4.51 %	2,063,043,921 JPY	5.22 %
04.2017	439	1.78 %	836,112,339 JPY	2.12 %
05.2017	500	2.03 %	993,822,528 JPY	2.52 %
06.2017	544	2.21 %	1,068,891,161 JPY	2.71 %
07.2017	293	1.19 %	562,504,546 JPY	1.42 %
08.2017	286	1.16 %	607,372,842 JPY	1.54 %
09.2017	314	1.28 %	671,968,935 JPY	1.70 %
10.2017	158	0.64 %	344,035,015 JPY	0.87 %
11.2017	69	0.28 %	174,090,828 JPY	0.44 %
12.2017	0	0.00 %	0 JPY	0.00 %
01.2018	0	0.00 %	0 JPY	0.00 %
02.2018	0	0.00 %	0 JPY	0.00 %
03.2018	0	0.00 %	0 JPY	0.00 %
04.2018	0	0.00 %	0 JPY	0.00 %
05.2018	0	0.00 %	0 JPY	0.00 %
06.2018	0	0.00 %	0 JPY	0.00 %
07.2018	0	0.00 %	0 JPY	0.00 %
08.2018	0	0.00 %	0 JPY	0.00 %
09.2018	0	0.00 %	0 JPY	0.00 %
10.2018	0	0.00 %	0 JPY	0.00 %
11.2018	0	0.00 %	0 JPY	0.00 %
12.2018	0	0.00 %	0 JPY	0.00 %
Total	24,614	100.00 %	39,494,739,541 JPY	100.00 %

Distribution by Contract End Month

Maturity Month	Number of Loans	Percentage of Loans	Outstanding Discounted Principal Balance	Percentage of Balance
01.2019	425	1.73 %	404,883,983 JPY	1.03 %
02.2019	605	2.46 %	589,502,589 JPY	1.49 %
03.2019	973	3.95 %	1,052,853,746 JPY	2.67 %
04.2019	465	1.89 %	615,233,524 JPY	1.56 %
05.2019	614	2.49 %	770,591,058 JPY	1.95 %
06.2019	811	3.29 %	1,164,495,814 JPY	2.95 %
07.2019	617	2.51 %	868,197,731 JPY	2.20 %
08.2019	654	2.66 %	937,752,652 JPY	2.37 %
09.2019	962	3.91 %	1,520,977,153 JPY	3.85 %
10.2019	630	2.56 %	959,568,456 JPY	2.43 %
11.2019	849	3.45 %	1,463,816,552 JPY	3.71 %
12.2019	470	1.91 %	718,905,957 JPY	1.82 %
01.2020	390	1.58 %	571,061,146 JPY	1.45 %
02.2020	548	2.23 %	793,773,704 JPY	2.01 %
03.2020	741	3.01 %	1,129,990,060 JPY	2.86 %
04.2020	264	1.07 %	446,944,377 JPY	1.13 %
05.2020	380	1.54 %	593,095,533 JPY	1.50 %
06.2020	414	1.68 %	651,229,340 JPY	1.65 %
07.2020	292	1.19 %	397,288,867 JPY	1.01 %
08.2020	372	1.51 %	581,488,924 JPY	1.47 %
09.2020	415	1.69 %	634,586,258 JPY	1.61 %
10.2020	253	1.03 %	373,676,632 JPY	0.95 %
11.2020	285	1.16 %	418,960,262 JPY	1.06 %
12.2020	356	1.45 %	478,302,883 JPY	1.21 %
01.2021	477	1.94 %	699,059,456 JPY	1.77 %
02.2021	725	2.95 %	1,127,436,550 JPY	2.85 %
03.2021	1,023	4.16 %	1,561,968,908 JPY	3.95 %
04.2021	498	2.02 %	781,207,515 JPY	1.98 %
05.2021	690	2.80 %	1,059,028,445 JPY	2.68 %
06.2021	742	3.01 %	1,255,067,693 JPY	3.18 %
07.2021	755	3.07 %	1,278,665,310 JPY	3.24 %
08.2021	857	3.48 %	1,507,897,694 JPY	3.82 %
09.2021	1,161	4.72 %	2,114,458,745 JPY	5.35 %
10.2021	716	2.91 %	1,362,455,838 JPY	3.45 %
11.2021	963	3.91 %	1,908,923,421 JPY	4.83 %
12.2021	344	1.40 %	673,761,615 JPY	1.71 %
01.2022	300	1.22 %	628,477,926 JPY	1.59 %
02.2022	354	1.44 %	733,466,502 JPY	1.86 %
03.2022	560	2.28 %	1,109,721,502 JPY	2.81 %
04.2022	247	1.00 %	472,666,961 JPY	1.20 %
05.2022	280	1.14 %	571,151,369 JPY	1.45 %
06.2022	283	1.15 %	598,952,375 JPY	1.52 %
07.2022	169	0.69 %	363,831,772 JPY	0.92 %
08.2022	192	0.78 %	414,612,460 JPY	1.05 %
09.2022	177	0.72 %	407,541,130 JPY	1.03 %
10.2022	97	0.39 %	226,231,459 JPY	0.57 %
11.2022	53	0.22 %	120,652,697 JPY	0.31 %
12.2022	23	0.09 %	47,744,691 JPY	0.12 %
01.2023	13	0.05 %	23,349,453 JPY	0.06 %
02.2023	17	0.07 %	38,376,106 JPY	0.10 %
03.2023	22	0.09 %	43,714,389 JPY	0.11 %
04.2023	9	0.04 %	19,114,020 JPY	0.05 %
05.2023	19	0.08 %	49,984,308 JPY	0.13 %
06.2023	15	0.06 %	30,165,820 JPY	0.08 %
07.2023	6	0.02 %	14,302,452 JPY	0.04 %
08.2023	7	0.03 %	18,462,749 JPY	0.05 %
09.2023	12	0.05 %	30,124,457 JPY	0.08 %
10.2023	10	0.04 %	23,890,000 JPY	0.06 %
11.2023	1	0.00 %	2,005,211 JPY	0.01 %
12.2023	2	0.01 %	7,859,718 JPY	0.02 %
01.2024	1	0.00 %	2,430,298 JPY	0.01 %
02.2024	2	0.01 %	5,585,912 JPY	0.01 %
03.2024	1	0.00 %	3,968,290 JPY	0.01 %
04.2024	1	0.00 %	2,925,451 JPY	0.01 %
05.2024	0	0.00 %	0 JPY	0.00 %
06.2024	0	0.00 %	0 JPY	0.00 %
07.2024	1	0.00 %	3,683,534 JPY	0.01 %
08.2024	0	0.00 %	0 JPY	0.00 %
09.2024	1	0.00 %	2,523,710 JPY	0.01 %
10.2024	3	0.01 %	10,114,428 JPY	0.03 %
Total	24,614	100.00 %	39,494,739,541 JPY	100.00 %

Distribution by Monthly Payment

Monthly Payment	Number of Loans	Percentage of Loans	Outstanding Discounted Principal Balance	Percentage of Balance
<= 10,000 JPY	1,221	4.96 %	1,266,757,014 JPY	3.21 %
10,001 JPY - 20,000 JPY	4,724	19.19 %	5,298,994,166 JPY	13.42 %
20,001 JPY - 30,000 JPY	6,703	27.23 %	8,817,516,505 JPY	22.33 %
30,001 JPY - 40,000 JPY	4,998	20.31 %	7,995,531,537 JPY	20.24 %
40,001 JPY - 50,000 JPY	2,763	11.23 %	5,134,852,084 JPY	13.00 %
50,001 JPY - 60,000 JPY	1,591	6.46 %	3,364,726,809 JPY	8.52 %
60,001 JPY - 70,000 JPY	839	3.41 %	2,018,205,532 JPY	5.11 %
70,001 JPY - 80,000 JPY	479	1.95 %	1,276,853,845 JPY	3.23 %
80,001 JPY - 90,000 JPY	335	1.36 %	951,913,577 JPY	2.41 %
90,001 JPY - 100,000 JPY	274	1.11 %	841,208,229 JPY	2.13 %
100,001 JPY - 110,000 JPY	177	0.72 %	564,268,976 JPY	1.43 %
110,001 JPY - 120,000 JPY	125	0.51 %	467,746,142 JPY	1.18 %
120,001 JPY - 130,000 JPY	104	0.42 %	380,441,806 JPY	0.96 %
130,001 JPY - 140,000 JPY	61	0.25 %	250,940,784 JPY	0.64 %
140,001 JPY - 150,000 JPY	48	0.20 %	201,511,246 JPY	0.51 %
>= 150,001 JPY	172	0.70 %	663,271,289 JPY	1.68 %
Total	24,614	100.00 %	39,494,739,541 JPY	100.00 %

Distribution by Bonus Payment

Bonus Payment	Number of Loans	Percentage of Loans	Outstanding Discounted Principal Balance	Percentage of Balance
No Bonus Payment	14,582	59.24 %	23,127,173,913 JPY	58.56 %
1 JPY - 25,000 JPY	244	0.99 %	276,400,857 JPY	0.70 %
25,001 JPY - 50,000 JPY	2,518	10.23 %	3,351,882,923 JPY	8.49 %
50,001 JPY - 75,000 JPY	886	3.60 %	1,319,189,029 JPY	3.34 %
75,001 JPY - 100,000 JPY	3,483	14.15 %	5,566,895,530 JPY	14.10 %
100,001 JPY - 125,000 JPY	434	1.76 %	726,678,389 JPY	1.84 %
125,001 JPY - 150,000 JPY	1,357	5.51 %	2,585,961,753 JPY	6.55 %
150,001 JPY - 175,000 JPY	143	0.58 %	277,307,503 JPY	0.70 %
175,001 JPY - 200,000 JPY	583	2.37 %	1,290,214,341 JPY	3.27 %
200,001 JPY - 225,000 JPY	37	0.15 %	77,861,247 JPY	0.20 %
225,001 JPY - 250,000 JPY	157	0.64 %	369,802,511 JPY	0.94 %
250,001 JPY - 275,000 JPY	13	0.05 %	34,944,326 JPY	0.09 %
275,001 JPY - 300,000 JPY	113	0.46 %	302,087,735 JPY	0.76 %
300,001 JPY - 325,000 JPY	6	0.02 %	14,811,682 JPY	0.04 %
325,001 JPY - 350,000 JPY	21	0.09 %	57,822,120 JPY	0.15 %
350,001 JPY - 375,000 JPY	4	0.02 %	15,526,540 JPY	0.04 %
375,001 JPY - 400,000 JPY	14	0.06 %	56,969,821 JPY	0.14 %
400,001 JPY - 425,000 JPY	0	0.00 %	0 JPY	0.00 %
425,001 JPY - 450,000 JPY	2	0.01 %	5,995,005 JPY	0.02 %
450,001 JPY - 475,000 JPY	0	0.00 %	0 JPY	0.00 %
475,001 JPY - 500,000 JPY	15	0.06 %	29,909,161 JPY	0.08 %
500,001 JPY or more	2	0.01 %	7,305,155 JPY	0.02 %
Total	24,614	100.00 %	39,494,739,541 JPY	100.00 %

Distribution by Motor Type

Motor Type	Number of Loans	Percentage of Loans	Outstanding Discounted Principal Balance	Percentage of Balance
EA 189	0	0.00 %	0 JPY	0.00 %
Other	24,614	100.00 %	39,494,739,541 JPY	100.00 %
Total	24,614	100.00 %	39,494,739,541 JPY	100.00 %

Disclaimer

This presentation contains forward-looking statements and information on the business development of the Volkswagen Group. These statements may be spoken or written and can be recognized by terms such as "expects", "anticipates", "intends", "plans", "believes", "seeks", "estimates", "will", or words with similar meaning. These statements are based on assumptions relating to the development of the economies of individual countries, and in particular of the automotive industry, which we have made on the basis of the information available to us and which we consider to be realistic at the time of going to press. The estimates given involve a degree of risk, and the actual developments may differ from those forecast.

Consequently, any unexpected fall in demand or economic stagnation in our key sales markets, such as in Western Europe (and especially Germany) or in the USA, Brazil or China, will have a corresponding impact on the development of our business. The same applies in the event of a significant shift in current exchange rates relative to the US dollar, sterling, yen, Brazilian real, Chinese renminbi and Czech koruna.

If any of these or other risks occur, or if the assumptions underlying any of these statements prove incorrect, the actual results may significantly differ from those expressed or implied by such statements.

We do not update forward-looking statements retrospectively. Such statements are valid on the date of publication and can be superceded.

This information does not constitute an offer to exchange or sell or an offer to exchange or buy any securities.