

Deal Name: Driver Japan six

Originator: Volkswagen Financial Services Japan Ltd.
Gotenyama Trust Tower 17F
7-35 Kitashinagawa 4-chome, Shinagawa-ku
Tokyo 140-0001, Japan

Reporting Entity: Volkswagen Financial Services Japan Ltd.
Treasury Dept.
Gotenyama Trust Tower 17F
7-35 Kitashinagawa 4-chome, Shinagawa-ku
Tokyo 140-0001, Japan
Tel No.: +81(0)3-5792-7261
Fax No.: +81(0)3-3280-7365
E-mail: vwfsjp.abs@vwfs.com

**Trustor of the First Trust:
Servicer:** Volkswagen Financial Services Japan Ltd.

**Trustee of the First Trust:
Trustee of the Second Trust:** Deutsche Trust Company Limited Japan
Sanno Park Tower, 11-1,
Nagatacho 2-chome, Chiyoda-ku,
Tokyo, 100-6172, Japan
Trust Business Administration Department
Tel No.: +81(0)3-5156-5637
Fax No.: +81(0)3-5156-5658
E-mail: DB_Trust_Trust@list.db.com



Contents

Page	Tables of Contents
1	Front Page
2	Contents
3	Deal Overview
4	Deal Overview: Counterparties I
5	Deal Overview: Counterparties II
6	Information regarding the TBI and ABL to the Second Trust
7	Pool Information
8	Available Distribution
9	Waterfall
10	Credit Enhancement
11	Cumulative Gross Loss Ratio & Performance Trigger
12	Cumulative Gross Loss Ratio & Performance Trigger (Chart)
13	Default & Delinquencies
14	Run Out Schedule (Previous)
15	Run Out Schedule
16	Expected Amortization to the Second Trust
17	Sub-Servicer
18	Brand
19	New and Used
20	Product Type
21	RV
22	Brand New and Used
23	Customer Type
24	Outstanding Discounted Principal Balance
25	Original Principal Amount
26	Interest Rate paid by the Obligor
27	Original Term
28	Remaining Term
29	Seasoning
30	Type of Car
31	Brand and Model
32	Geographic Dist. by Prefecture
33	Obligor Concentration
34	Contract Start Month
35	Contract End Month
36	Monthly payment
37	Bonus payment
38	Mortor Type

Deal Overview

Cut Off Date:	2017/02/10		
Trust Commencement Date:	2017/02/23	Legal Maturity of the First Trust:	2025/06/27
Monthly Period:	2018/11/11	to	2018/12/10
Reporting Date:	2018/12/17		
Reporting Frequency:	monthly		
Period No.:	22		
Remittance Date:	2018/12/21		
Advance Payment Date:	2018/12/21		
Cash Adjustment Date:	2018/12/21		
Additional Entrustment Date:	2018/12/26		
Trust Calculation Date:	2018/12/26		
Trust Calculation Period:	2018/11/27	to	2018/12/26
First Trust Payment Date:	2018/12/27		
Second Trust Payment Date:	2018/12/28		
Interest Calculation Period:	2018/11/29	to	2018/12/28
Next Reporting Date:	2019/01/18		

Pool information at the Initial Cut off Date

	Number of Contracts	Outstanding Discounted Principal Balance	Outstanding Nominal Balance
Outstanding Pool	30,757	64,171,706,472 JPY	67,028,993,300 JPY

Credit Type	Percentage of Loans	Outstanding Discounted Principal Balance	Percentage of Balance
Balloon	76.13 %	55,443,642,000 JPY	86.40 %
Equal Instalment Loan	23.87 %	8,728,064,472 JPY	13.60 %
Total	100.00 %	64,171,706,472 JPY	100.00 %

Type of Car	Percentage of Loans	Outstanding Discounted Principal Balance	Percentage of Balance
New	66.66 %	49,506,381,305 JPY	77.15 %
Used	33.34 %	14,665,325,167 JPY	22.85 %
Total	100.00 %	64,171,706,472 JPY	100.00 %

Deal Overview: Counterparties I

Joint Lead Managers:

Shinsei Securities Co., Ltd.
 Nihonbashi Muromachi Nomura Building, 4-3,
 Nihonbashi-muromachi 2-chome,
 Chuo-ku,
 Tokyo 103-0022, Japan

BNP Paribas Securities (Japan) Limited
 GranTokyo North Tower, 9-1,
 Marunouchi 1-chome,
 Chiyoda-ku,
 Tokyo 100-6740, Japan

Trust Management Account Bank:

MUFG Bank, Ltd.
 4-2 Toranomom 1-chome,
 Minato-ku
 Tokyo 105-0001, Japan

Rating								
Moody's			Fitch			R&I		
Long Term	Short Term	Outlook	Long Term	Short Term	Outlook	Long Term	Short Term	Outlook
n.a.	n.a.	n.a.	n.a.	n.a.	n.a.	n.a.	n.a.	n.a.
n.a.	n.a.	n.a.	n.a.	n.a.	n.a.	n.a.	n.a.	n.a.
A1	P-1	Stable	A	F1	Stable	AA-	a-1+	Stable

Originator:

Trustor of the First Trust:

Servicer:

Volkswagen Financial Services Japan Ltd.
 Gotenyama Trust Tower 17F
 7-35 Kitashinagawa 4-chome, Shinagawa-ku
 Tokyo 140-0001, Japan

Trustee of the First Trust:

Trustee of the Second Trust:

Deutsche Trust Company Limited Japan
 Attn.: Driver Japan Six
 Trust Business Administration Department

ABL Lender to the First Trust:

Trustor of the Second Trust:

Shinsei Securities Co., Ltd.

Seller of the Trust Beneficial

Interest of the Second Trust

Shinsei Securities Co., Ltd.
 BNP Paribas Securities (Japan) Limited

Deal Overview: Counterparties II

Rating Agencies:

Moody's SF Japan K.K.

Attn.: Driver Japan six
 Structure Finance Group Monitoring Division
 5-1 Atago 2-chome, Minato-ku
 Tokyo 105-6220, Japan
 E-mail: monitor.msfi@moodys.com

Fitch Ratings Japan Limited

Attn.: Driver Japan six
 Structured Finance
 Kojimachi Crystal City East Wing 3rd Floor,
 4-8 Kōjimachi, Chiyoda-ku,
 Tokyo 102-0083, Japan
 E-mail: tokyo.surveillance@fitchratings.com

Rating and Investment Information, Inc.

Attn.: Monitoring Group Department:
 Structured Finance Department
 TERRACE SQUARE, 3-22,
 Kanda Nishikicho, Chiyoda-ku,
 Tokyo 101-0054, Japan
 E-mail: sfmonitor@r-i.co.jp

Rating of VW

Volkswagen Financial Services AG

Volkswagen AG

Rating								
Moody's			Fitch			R&I		
Short Term	Long Term	Outlook	Short Term	Long Term	Outlook	Short Term	Long Term	Outlook
P-2	A3	Stable	n.a.	n.a.	n.a.	n.a.	n.a.	n.a.
P-2	A3	Stable	F2	BBB+	Stable	n.a.	n.a.	n.a.

Information regarding Trust Beneficial Interest of the Second Trust & Asset Backed Loan to the Second Trust

Rating Details

Rating at Issue Date

	<u>TBI</u>	<u>ABL</u>
Moody's	Aaa(sf)	Aaa(sf)
Fitch	AAAsf	AAAsf
R&I	AAA	AAA

Current Rating

	<u>TBI</u>	<u>ABL</u>
Moody's	Aaa(sf)	Aaa(sf)
Fitch	AAAsf	AAAsf
R&I	AAA	AAA

Information on TBI & ABL

	<u>TBI</u>	<u>ABL</u>
Initial Balance	39,200,000,000 JPY	20,800,000,000 JPY
Expected Maturity Date	2021/06/28	2021/06/28
Legal Maturity of the Second Trust	2025/06/30	2025/06/30
Payment Dates	28th	28th
Business Day Convention	Modified Following	Modified Following
Listing	None	—

Information on Interest

	<u>TBI</u>	<u>ABL</u>
Fixed/ Floating	Fixed	Fixed
Current Coupon	0.19%	0.19%
Day Count Convention	30/360	30/360

Selling Restriction

The holders of the Beneficial Interest and the ABL Lenders* are prohibited from dividing, assigning, pledging or creating any other security interest over any of the Beneficial Interest and the Asset Backed Loans without the prior written approval of the Trustee of the Second Trust.

(*)The holders of the Beneficial Interest and the ABL Lenders are limited to specified investors (*tokutei toushika*) as defined under Paragraph 31 of Article 2 of the Financial Instruments and Exchange Act (Law no.25 of 1948 as amended).

Clean-Up Call

VWFS Japan as the Trustor of the First Trust has a right at its option to exercise a clean-up call to repurchase of all, but not part, of the outstanding Auto Loan Receivables from the Trustee of the First Trust on any Trust Calculation Date, the Discounted Principal Balance of all outstanding Auto Loan Receivables is expected to be less than ten percent (10%) of the Discounted Principal Balance of the Initial Auto Loan Receivables as of the Initial Cut-off Date after the distribution pursuant to Article 18.1 of the First Trust Agreement on the immediately following First Trust Payment Date.

Pool Information
Pool Balance on Initial Cut-Off Date

Status	Number of Contracts	Outstanding Discounted Principal Balance
Normal	30,757	64,171,706,472 JPY
Cancellation	0	0 JPY
Early Termination	0	0 JPY
Defaulted Receivables	0	0 JPY
Matured	0	0 JPY
Refinance Option	0	0 JPY
Repurchase	0	0 JPY
Total	30,757	64,171,706,472 JPY

Pool Balance before entrustment of Additional Auto Loan Receivables

Status	Number of Contracts on previous EoP	Outstanding Discounted Principal Balance on previous EoP	Number of Contracts "as Collections" during the relevant Monthly Period*	Outstanding Discounted Principal Balance "as Collections" during the relevant Monthly Period*	Number of Contracts EoP before entrustment of Additional Auto Loan Receivables	Outstanding Discounted Principal Balance EoP before entrustment of Additional Auto Loan Receivables
Normal	26,679	44,488,368,821 JPY	25,749	847,172,663 JPY	25,749	42,512,361,606 JPY
Cancellation	0	0 JPY	0	0 JPY	0	0 JPY
Early Termination	0	0 JPY	474	811,951,413 JPY	0	0 JPY
Defaulted Receivables	0	0 JPY	7	17,220,148 JPY	0	0 JPY
Matured	0	0 JPY	381	224,626,787 JPY	0	0 JPY
Refinance Option	0	0 JPY	68	75,036,204 JPY	0	0 JPY
Repurchase	0	0 JPY	0	0 JPY	0	0 JPY
Total	26,679	44,488,368,821 JPY	26,679	1,976,007,215 JPY	25,749	42,512,361,606 JPY

Pool Balance after entrustment of Additional Auto Loan Receivables

Status	Number of Contracts EoP before entrustment of Additional Auto Loan Receivables	Outstanding Discounted Principal Balance EoP before entrustment of Additional Auto Loan Receivables	Number of Contracts of Additional Auto Loan Receivables	Outstanding Discounted Principal Balance of Additional Auto Loan Receivables	Number of Contracts EoP after entrustment of Additional Auto Loan Receivables	Outstanding Discounted Principal Balance EoP after entrustment of Additional Auto Loan Receivables
Normal	25,749	42,512,361,606 JPY	0	0 JPY	25,749	42,512,361,606 JPY
Cancellation	0	0 JPY	0	0 JPY	0	0 JPY
Early Termination	0	0 JPY	0	0 JPY	0	0 JPY
Defaulted Receivables	0	0 JPY	0	0 JPY	0	0 JPY
Matured	0	0 JPY	0	0 JPY	0	0 JPY
Refinance Option	0	0 JPY	0	0 JPY	0	0 JPY
Repurchase	0	0 JPY	0	0 JPY	0	0 JPY
Total	25,749	42,512,361,606 JPY	0	0 JPY	25,749	42,512,361,606 JPY

Limits on Eligibility Criteria

Status Limits on Eligibility Criteria (v) (including Additional Entrustment)	Current Exposure in %	Limits in % of the aggregate Discounted Principal Balance of the Auto Loan Receivables outstanding	Status
(i) on Used Purchased Vehicle	22.41 %	35 %	-*
(ii) on Non-VW Vehicles	0.01 %	5 %	-*
(iii) on Balloon Payment	49.36 %	50 %	-*

(*) not applicable since the Revolving Period ended

Outstanding Balances

Monthly Period: from 2018/11/11 to 2018/12/10
Reporting Date: 2018/12/17
Trust Calculation Date: 2018/12/26

Outstanding Balances

	Number of Contracts	Aggregate Amount of the Discounted Principal Balance	Aggregate Amount of the Nominal Balance
Balance on the previous EoP	26,679	44,488,368,821 JPY	45,891,238,200 JPY
Balance after counting on the Collections during the relevant Monthly Period	25,749	42,512,361,606 JPY	43,815,219,400 JPY
Balance of Additional Auto Loan Receivables	0	0 JPY	0 JPY
Aggregate Amount of Auto Loan Receivables	25,749	42,512,361,606 JPY	43,815,219,400 JPY

Collections

	Number of Contracts	Aggregate Amount of the Discounted Principal Balance	Aggregate Amount of the Nominal Balance
Collections: Amortization of current contracts	25,749	847,172,663 JPY	924,434,700 JPY
Collections: Cancellation	0	0 JPY	0 JPY
Collections: Early Termination	474	811,951,413 JPY	812,983,261 JPY
Collections: Defaulted Receivables	7	17,220,148 JPY	17,267,257 JPY
Collections: Matured	381	224,626,787 JPY	224,982,200 JPY
Collections: Refinance Option	68	75,036,204 JPY	75,160,000 JPY
Collections: Repurchase	0	0 JPY	0 JPY
Sum	26,679	1,976,007,215 JPY	2,054,827,418 JPY

Available Distribution Amount

	Number of Contracts	Aggregate Amount of the Nominal Balance
(a) the Collections for the Monthly Period with respect to such Trust Calculation Date	26,679	2,054,827,418 JPY
(b) drawings from the Cash Collateral Ledger in accordance with Article 18.3 of the First Trust Agreement	0	0 JPY
(c) net investment earnings from Eligible Investments	0	0 JPY
(d) net proceeds from the sale or disposal of the Trust Assets of the First Trust	0	0 JPY
(e) any amount which is carried over from the immediately preceding Trust Calculation Date	0	0 JPY
Sum	26,679	2,054,827,418 JPY

Waterfall

There is no distinction between principal and interest, and all collections go through a single priority of payments			
		Payment	Remaining Amount
Available Distribution Amount	plus	2,054,827,418 JPY	2,054,827,418 JPY
(a) an amount necessary for the payment of all taxes and public charges to be paid to the relevant public authority by the immediately following First Trust Payment Date.	less	0 JPY	2,054,827,418 JPY
(b) an amount necessary for the payment of all Fees for the Trustee of the First Trust to be paid to the Trustee of the First Trust by the immediately following First Trust Payment Date.	less	400,394 JPY	2,054,427,024 JPY
(c) an amount necessary for the payment of the Servicing Fee to be paid to the Servicer by the immediately following First Trust Payment Date.	less	40,039,531 JPY	2,014,387,493 JPY
(d) an amount necessary for the payment of the Trust Expenses of the First Trust as provided in Article 23.1 (including the Rating Fees, Costs of the Second Trust and those fees not otherwise covered by (b) or (c) above) to be paid to the relevant party by the immediately following First Trust Payment Date (including any amounts advanced by the Trustee of the First Trust pursuant to Article 23.3)	less	415,838 JPY	2,013,971,655 JPY
(e) an amount necessary for the payment of overdue and unpaid interest on the Asset Backed Loans to the First Trust (if any) to be paid to the Trustee of the Second Trust by the immediately following First Trust Payment Date.	less	0 JPY	2,013,971,655 JPY
(f) an amount necessary for the payment to the Trustee of the Second Trust of interest on the Asset Backed Loan to the First Trust accruing during the relevant Interest Calculation Period	less	6,233,932 JPY	2,007,737,723 JPY
(g) an amount necessary to top up the balance thereof until it is equal to the Cash Collateral Ledger Target Balance	less	0 JPY	2,007,737,723 JPY
(h) (i) prior to the expiration of the Revolving Period: an amount necessary for the redemption of any Additional Senior Beneficial Interest;	less	1,748,766,385 JPY	258,971,338 JPY
(ii) following the expiration of the Revolving Period and prior to the occurrence of an Early Amortization Event, an amount necessary for the payment to the Trustee of the Second Trust of the Asset Backed Loan Principal Payment Amount for the relevant First Trust Payment Date.			
(iii) following the occurrence of the Early Amortization Event, an amount necessary for the payment to the Trustee of the Second Trust of the remaining principal balance of the Asset Backed Loan to the First Trust.			
(i) an amount necessary for the payment to the Trustee of the First Trust of any Indemnified Amounts which are not compensated by the Trustor of the First Trust	less	0 JPY	258,971,338 JPY
(j) an amount necessary for the payment to the Subordinated Beneficiary of the Subordinated Beneficial Principal Payment Amount for the relevant First Trust Payment Date.	less	227,240,830 JPY	31,730,508 JPY
(k) (i) prior to the expiration of the Revolving Period, then (x) if a transfer is made under (j) above, such remaining amount will be transferred to the Expenses Distribution Ledger for payment to the Subordinated Beneficiary as a payment of earnings on the Subordinated Beneficial Interest, and such payment shall be made on the First Trust Payment Date immediately following such Trust Calculation Date or (y) if no transfer is made under (j) above, such remaining amount will be carried forward to the next Trust Calculation Date.	less	31,730,508 JPY	0 JPY
(ii) following the expiration of the Revolving Period and prior to the occurrence of an Early Amortization Event, then such remaining amount will be transferred to the Expenses Distribution Ledger for payment to the Subordinated Beneficiary as a payment of earnings on the Subordinated Beneficial Interest, and such payment shall be made on the First Trust Payment Date immediately following such Trust Calculation Date.			
(iii) following the occurrence of an Early Amortization Event, the remaining amount in the Trust Collection Ledger will be carried forward to the next Trust Calculation Date.			

Credit Enhancement

Subordinated Principal Balance as of the relevant First Trust Payment Date

	Percentage of Aggregate Discounted Principal Balance	Value
(i) the aggregate amount of the Discounted Principal Balance of all Auto Loan Receivables outstanding		42,512,361,606 JPY
(ii) Asset Backed Loan Principal Balance on the relevant First Trust Payment Date		37,623,440,021 JPY
Overcollateralization (= (i) - (ii))	11.50 %	4,888,921,585 JPY
Trust Collection Ledger which is carried over from the immediately preceding Trust Calculation Date	0.00 %	0 JPY
The amount in the Cash Collateral Ledger	0.81 %	345,000,000 JPY
Subordinated Principal Balance	12.31 %	5,233,921,585 JPY

Trust Management Account (TMA)

	in JPY	+/-	in JPY (previous)
Initial Balance on Cash Entrustment Date	345,000,000 JPY		
Outstanding Balance on First Trust Payment Date	345,000,000 JPY	0 JPY	345,000,000 JPY
(a) Expenses Distribution Ledger	0 JPY	0 JPY	0 JPY
(b) Trust Collection Ledger	0 JPY	0 JPY	0 JPY
(c) Cash Collateral Ledger	345,000,000 JPY	0 JPY	345,000,000 JPY
Cash Collateral Ledger Target Balance	345,000,000 JPY		

Calculation of Credit Enhancement

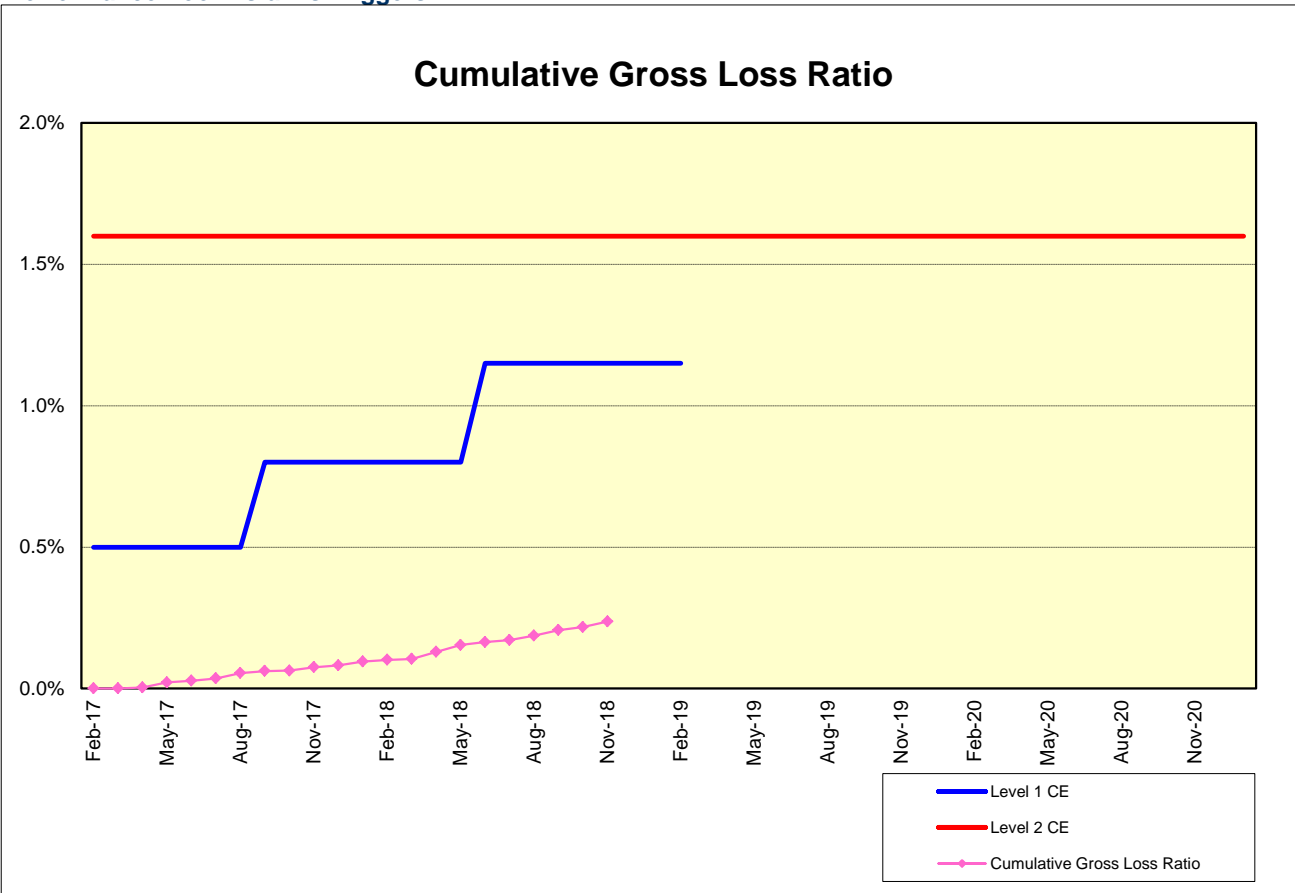
Driver Japan six's Credit Enhancement consists of the items listed above in the Subordinated Principal Balance as of the relevant date of determination (immediately following the First Trust Payment Date). The result provides an absolute value, which will be applied to the (amortized) Aggregate Discounted Principal Balance as of the end of the relevant date.

The transaction has a Revolving Period of 12 months until February 2018.

Asset Backed Loan Overcollateralization Percentage is (i) prior to the expiration of the Revolving Period, 8.5%, and (ii) following the expiration of the Revolving Period, 11.5%; provided, in each case no Credit Enhancement Increase Condition shall be in effect. After a Level 1 Credit Enhancement Increase Condition in effect, 17% and after a Level 2 Credit Enhancement Increase Condition is in effect, 100%.

Cumulative Gross Loss & Cumulative Repurchased Receivables

Performance Pool vis-a-vis Triggers



Cumulative Repurchased Receivables

	Number of Contracts	Repurchase Price
Beginning of Period	0	0 JPY
Repurchased Receivables	0	0 JPY
End of Period	0	0 JPY

Defaulted and Delinquent Contracts

Information of Delinquencies and Defaults

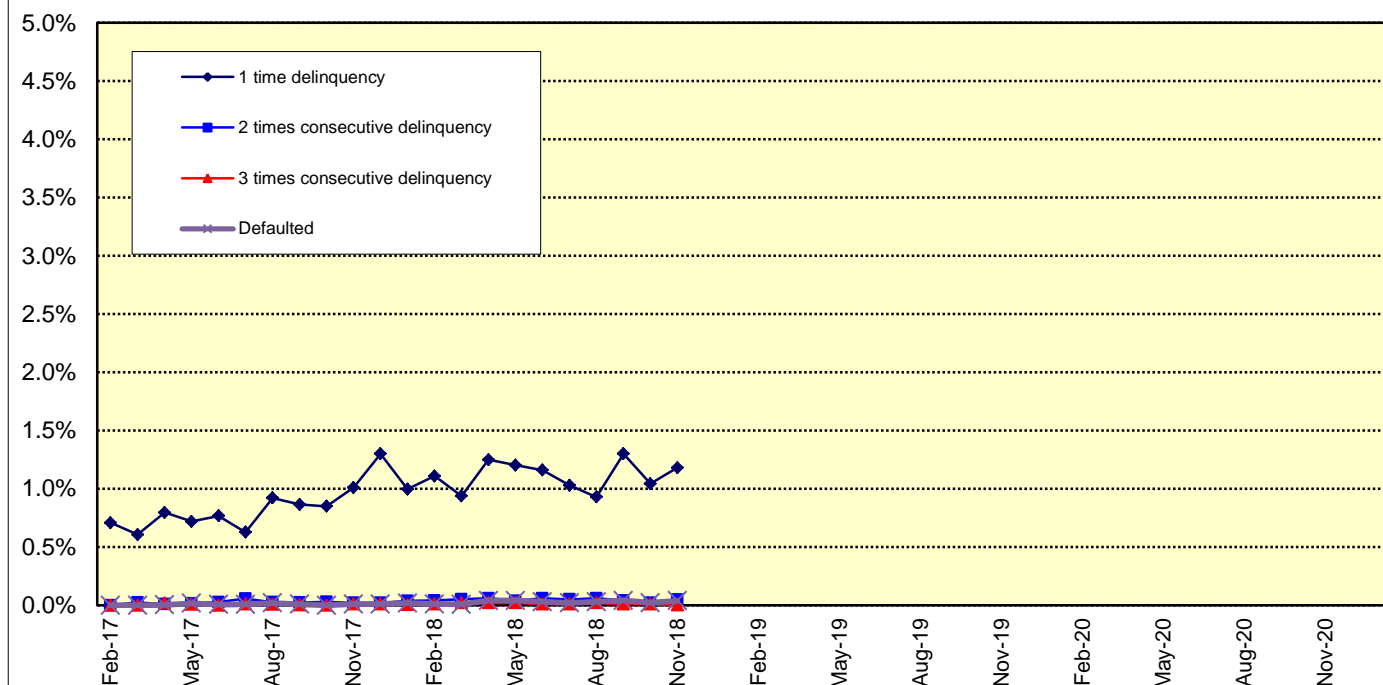
Current Reporting Period	Number of Contracts	Percentage of Contracts (*)	Outstanding Discounted Principal Balance	Percentage of Principal Balance (*)	Outstanding Nominal Balance	Percentage of Nominal Balance (*)
Delinquent	293	1.10 %	523,459,134 JPY	1.18 %	542,224,400 JPY	1.18 %
Default	7	0.03 %	17,220,148 JPY	0.04 %	17,267,257 JPY	0.04 %

(*) Based on the previous EoP

Delinquency Profile (Information Purpose Only)

Days in Arrears	Number of Contracts	Percentage of Contracts	Outstanding Discounted Principal Balance	Percentage of Principal Balance	Outstanding Nominal Balance	Percentage of Nominal Balance
1	282	1.10 %	502,087,310 JPY	1.18 %	519,842,400 JPY	1.19 %
2	10	0.04 %	20,525,608 JPY	0.05 %	21,508,000 JPY	0.05 %
3	1	0.00 %	846,216 JPY	0.00 %	874,000 JPY	0.00 %
Total	293	1.14 %	523,459,134 JPY	1.23 %	542,224,400 JPY	1.24 %

Delinquent / Defaulted (Gross Loss) Ratio



Run Out Schedule

ROS on the previous EoP on 2018/11/10

Next Payment Month	Number of Contracts	ABS Outstanding Principal	ABS Outstanding Interest	Outstanding Installment	ABS Remaining Principal	ABS Remaining Interest	ABS Remaining Installment
10.2018	26,679	44,488,368,821 JPY	1,402,869,379 JPY	45,891,238,200 JPY	0 JPY	0 JPY	0 JPY
11.2018	26,679	43,324,515,653 JPY	1,323,637,947 JPY	44,648,153,600 JPY	1,163,853,168 JPY	79,231,432 JPY	1,243,084,600 JPY
12.2018	26,230	40,977,398,916 JPY	1,246,490,584 JPY	42,223,889,500 JPY	2,347,116,737 JPY	77,147,363 JPY	2,424,264,100 JPY
01.2019	25,505	39,475,637,356 JPY	1,173,583,844 JPY	40,649,221,200 JPY	1,501,761,560 JPY	72,906,740 JPY	1,574,668,300 JPY
02.2019	25,039	38,054,607,474 JPY	1,103,374,026 JPY	39,157,981,500 JPY	1,421,029,882 JPY	70,209,818 JPY	1,491,239,700 JPY
03.2019	24,389	36,209,010,253 JPY	1,035,662,247 JPY	37,244,672,500 JPY	1,845,597,221 JPY	67,711,779 JPY	1,913,309,000 JPY
04.2019	23,330	34,872,977,425 JPY	971,132,075 JPY	35,844,109,500 JPY	1,336,032,828 JPY	64,530,172 JPY	1,400,563,000 JPY
05.2019	22,843	33,429,885,601 JPY	908,877,499 JPY	34,338,763,100 JPY	1,443,091,824 JPY	62,254,576 JPY	1,505,346,400 JPY
06.2019	22,199	31,329,769,284 JPY	849,061,916 JPY	32,178,831,200 JPY	2,100,116,317 JPY	59,815,583 JPY	2,159,931,900 JPY
07.2019	21,344	29,496,004,343 JPY	792,757,157 JPY	30,288,761,500 JPY	1,833,764,941 JPY	56,304,759 JPY	1,890,069,700 JPY
08.2019	20,712	27,998,303,489 JPY	739,572,311 JPY	28,737,875,800 JPY	1,497,700,854 JPY	53,184,846 JPY	1,550,885,700 JPY
09.2019	20,040	26,143,779,148 JPY	688,819,352 JPY	26,832,598,500 JPY	1,854,524,341 JPY	50,752,959 JPY	1,905,277,300 JPY
10.2019	19,035	24,792,953,272 JPY	640,914,228 JPY	25,433,867,500 JPY	1,350,825,876 JPY	47,905,124 JPY	1,398,731,000 JPY
11.2019	18,370	23,102,411,160 JPY	595,213,240 JPY	23,697,624,400 JPY	1,690,542,112 JPY	45,700,988 JPY	1,736,243,100 JPY
12.2019	17,482	21,505,398,337 JPY	552,079,063 JPY	22,057,477,400 JPY	1,597,012,823 JPY	43,134,177 JPY	1,640,147,000 JPY
01.2020	16,991	20,437,389,551 JPY	511,765,749 JPY	20,949,155,300 JPY	1,068,008,786 JPY	40,313,314 JPY	1,108,322,100 JPY
02.2020	16,591	19,423,550,631 JPY	473,351,369 JPY	19,896,902,000 JPY	1,013,838,920 JPY	38,414,380 JPY	1,052,253,300 JPY
03.2020	16,031	18,218,298,455 JPY	436,696,545 JPY	18,654,995,000 JPY	1,205,252,176 JPY	36,654,824 JPY	1,241,907,000 JPY
04.2020	15,270	17,471,156,279 JPY	402,024,321 JPY	17,873,180,600 JPY	747,142,224 JPY	34,672,224 JPY	747,142,224 JPY
05.2020	15,000	16,676,279,611 JPY	368,705,589 JPY	17,044,985,200 JPY	794,876,668 JPY	33,318,732 JPY	828,195,400 JPY
06.2020	14,611	15,636,118,152 JPY	336,804,848 JPY	15,972,923,000 JPY	1,040,161,459 JPY	31,900,741 JPY	1,072,062,200 JPY
07.2020	14,185	14,703,787,074 JPY	306,816,326 JPY	15,010,603,400 JPY	932,331,078 JPY	29,988,522 JPY	962,319,600 JPY
08.2020	13,888	13,935,009,836 JPY	278,617,964 JPY	14,213,627,800 JPY	768,777,238 JPY	28,198,362 JPY	796,975,600 JPY
09.2020	13,509	13,232,428,622 JPY	251,840,678 JPY	13,484,269,300 JPY	702,581,214 JPY	26,777,286 JPY	729,358,500 JPY
10.2020	13,079	12,675,223,558 JPY	226,383,542 JPY	12,901,607,100 JPY	557,205,064 JPY	25,457,136 JPY	582,662,200 JPY
11.2020	12,820	12,117,263,366 JPY	202,031,834 JPY	12,319,295,200 JPY	557,960,192 JPY	24,351,708 JPY	582,311,900 JPY
12.2020	12,519	11,151,426,692 JPY	178,790,108 JPY	11,330,216,800 JPY	965,836,674 JPY	23,241,726 JPY	989,078,400 JPY
01.2021	12,129	10,393,988,872 JPY	157,476,028 JPY	10,551,464,900 JPY	757,437,820 JPY	21,314,080 JPY	778,751,900 JPY
02.2021	11,635	9,583,164,739 JPY	137,601,661 JPY	9,720,766,400 JPY	810,824,133 JPY	19,874,367 JPY	830,698,500 JPY
03.2021	10,884	8,642,442,370 JPY	119,258,530 JPY	8,761,700,900 JPY	940,722,369 JPY	18,343,131 JPY	959,065,500 JPY
04.2021	9,820	8,077,397,282 JPY	102,658,318 JPY	8,180,055,600 JPY	565,045,088 JPY	16,600,212 JPY	581,645,300 JPY
05.2021	9,309	7,440,408,342 JPY	87,183,958 JPY	7,527,592,300 JPY	636,988,940 JPY	15,474,360 JPY	652,463,300 JPY
06.2021	8,600	6,652,037,074 JPY	72,954,326 JPY	6,724,991,400 JPY	788,371,268 JPY	14,229,632 JPY	802,600,900 JPY
07.2021	7,843	5,781,206,100 JPY	60,314,500 JPY	5,841,520,600 JPY	870,830,974 JPY	12,639,826 JPY	883,470,800 JPY
08.2021	7,074	5,012,370,195 JPY	49,349,405 JPY	5,061,719,600 JPY	768,835,905 JPY	10,965,095 JPY	779,801,000 JPY
09.2021	6,197	4,030,515,900 JPY	39,790,600 JPY	4,070,306,500 JPY	981,854,295 JPY	9,558,805 JPY	991,413,100 JPY
10.2021	5,014	3,392,037,035 JPY	32,074,465 JPY	3,424,111,500 JPY	638,478,865 JPY	7,716,135 JPY	646,195,000 JPY
11.2021	4,279	2,592,640,375 JPY	25,542,825 JPY	2,618,183,200 JPY	799,396,660 JPY	6,531,640 JPY	805,928,300 JPY
12.2021	3,293	2,154,481,857 JPY	20,453,243 JPY	2,174,935,100 JPY	438,158,518 JPY	5,089,582 JPY	443,248,100 JPY
01.2022	2,944	1,839,388,910 JPY	16,211,090 JPY	1,855,600,000 JPY	315,092,947 JPY	4,242,153 JPY	319,335,100 JPY
02.2022	2,639	1,516,934,758 JPY	12,586,342 JPY	1,529,521,100 JPY	322,454,152 JPY	3,624,748 JPY	326,078,900 JPY
03.2022	2,272	1,094,136,663 JPY	9,584,737 JPY	1,103,721,400 JPY	422,798,095 JPY	3,001,605 JPY	425,799,700 JPY
04.2022	1,702	902,844,735 JPY	7,346,765 JPY	910,191,500 JPY	191,291,928 JPY	2,237,972 JPY	193,529,900 JPY
05.2022	1,451	705,080,250 JPY	5,477,250 JPY	710,557,500 JPY	197,764,485 JPY	1,869,515 JPY	199,634,000 JPY
06.2022	1,165	499,380,699 JPY	3,975,101 JPY	503,355,800 JPY	205,699,551 JPY	1,502,149 JPY	207,201,700 JPY
07.2022	875	360,953,361 JPY	2,869,639 JPY	363,823,000 JPY	138,427,338 JPY	1,105,462 JPY	139,532,800 JPY
08.2022	702	262,229,302 JPY	2,050,298 JPY	264,279,600 JPY	98,724,059 JPY	819,341 JPY	99,543,400 JPY
09.2022	509	150,688,490 JPY	1,433,910 JPY	152,122,400 JPY	111,540,812 JPY	616,388 JPY	112,157,200 JPY
10.2022	327	85,135,923 JPY	1,051,277 JPY	86,187,200 JPY	65,552,567 JPY	382,633 JPY	65,935,200 JPY
11.2022	230	52,833,586 JPY	821,914 JPY	53,655,500 JPY	32,302,337 JPY	229,363 JPY	32,531,700 JPY
12.2022	174	40,770,967 JPY	664,633 JPY	41,435,600 JPY	12,062,619 JPY	157,281 JPY	12,219,900 JPY
01.2023	148	32,927,880 JPY	542,520 JPY	33,470,400 JPY	7,843,087 JPY	122,113 JPY	7,965,200 JPY
02.2023	134	27,628,703 JPY	443,197 JPY	28,071,900 JPY	5,299,177 JPY	99,323 JPY	5,398,500 JPY
03.2023	115	23,092,972 JPY	359,328 JPY	23,452,300 JPY	4,535,731 JPY	83,869 JPY	4,619,600 JPY
04.2023	93	19,322,658 JPY	288,742 JPY	19,611,400 JPY	3,770,314 JPY	70,586 JPY	3,840,900 JPY
05.2023	83	15,904,777 JPY	229,423 JPY	16,134,200 JPY	3,417,881 JPY	59,319 JPY	3,477,200 JPY
06.2023	64	12,573,969 JPY	180,331 JPY	12,754,300 JPY	3,330,808 JPY	49,092 JPY	3,379,900 JPY
07.2023	49	9,377,445 JPY	140,955 JPY	9,518,400 JPY	3,196,524 JPY	39,376 JPY	3,235,900 JPY
08.2023	43	7,133,596 JPY	111,404 JPY	7,245,000 JPY	2,243,849 JPY	29,551 JPY	2,273,400 JPY
09.2023	36	5,654,553 JPY	88,847 JPY	5,743,400 JPY	1,479,043 JPY	22,557 JPY	1,501,600 JPY
10.2023	23	4,697,022 JPY	70,878 JPY	4,767,900 JPY	957,531 JPY	17,969 JPY	975,500 JPY
11.2023	13	4,166,883 JPY	55,917 JPY	4,222,800 JPY	530,139 JPY	14,961 JPY	545,100 JPY
12.2023	12	2,868,255 JPY	42,645 JPY	2,910,900 JPY	1,298,628 JPY	13,272 JPY	1,311,900 JPY
01.2024	10	2,314,191 JPY	33,509 JPY	2,347,700 JPY	554,064 JPY	9,136 JPY	563,200 JPY
02.2024	9	1,952,261 JPY	26,139 JPY	1,978,400 JPY	361,930 JPY	7,370 JPY	369,300 JPY
03.2024	7	1,670,980 JPY	19,920 JPY	1,690,900 JPY	281,281 JPY	6,219 JPY	287,500 JPY
04.2024	6	1,442,602 JPY	14,598 JPY	1,457,200 JPY	228,378 JPY	5,322 JPY	233,700 JPY
05.2024	5	1,264,097 JPY	10,003 JPY	1,274,100 JPY	178,505 JPY	4,595 JPY	183,100 JPY
06.2024	5	1,085,024 JPY	5,976 JPY	1,091,000 JPY	179,073 JPY	4,027 JPY	183,100 JPY
07.2024	5	415,380 JPY	2,520 JPY	417,900 JPY	669,644 JPY	3,456 JPY	673,100 JPY
08.2024	4	263,803 JPY	1,197 JPY	265,000 JPY	151,577 JPY	1,323 JPY	152,900 JPY
09.2024	4	111,744 JPY	356 JPY	112,100 JPY	152,059 JPY	841 JPY	152,900 JPY
10.2024	3	0 JPY	0 JPY	0 JPY	111,744 JPY	356 JPY	112,100 JPY

Run Out Schedule

ROS on the relevant EoP on 2018/12/10

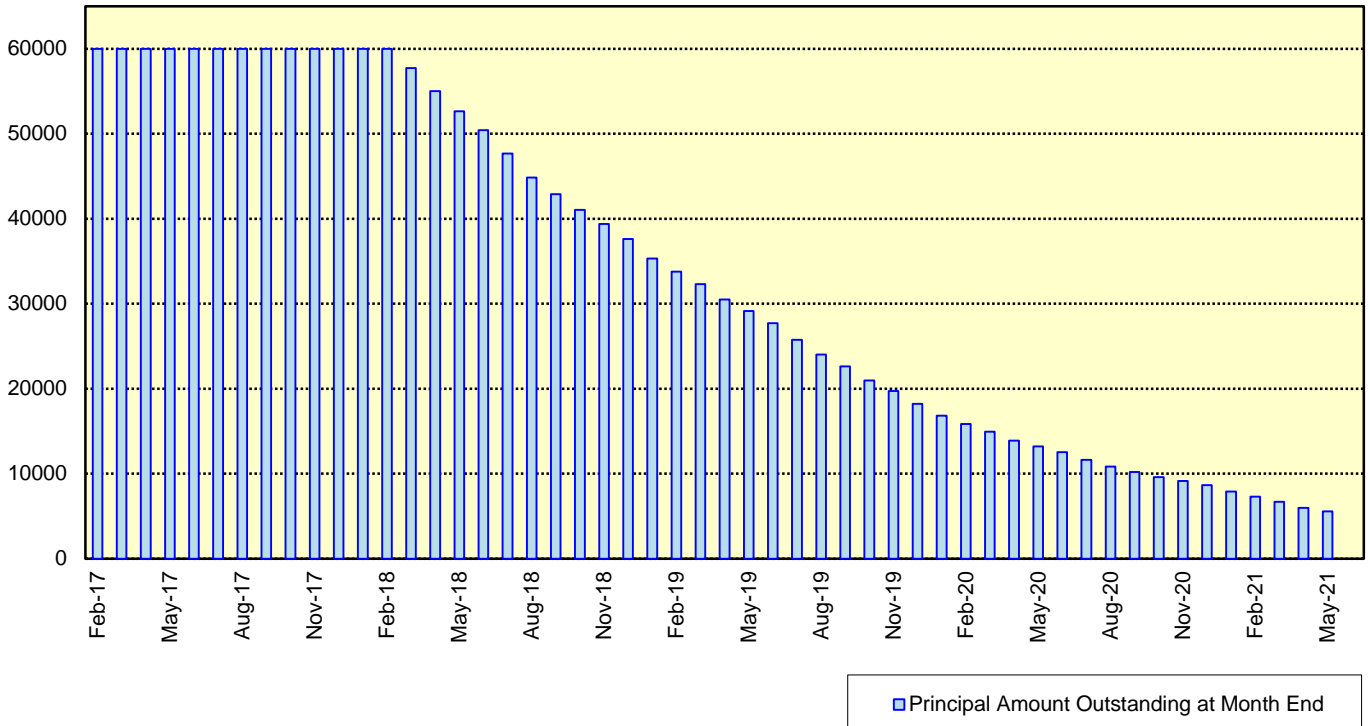
Next Payment Month	Number of Contracts	ABS Outstanding Principal	ABS Outstanding Interest	Outstanding Installment	ABS Remaining Principal	ABS Remaining Interest	ABS Remaining Installment
11.2018	25,749	42,512,361,606 JPY	1,302,857,794 JPY	43,815,219,400 JPY	0 JPY	0 JPY	0 JPY
12.2018	25,749	40,259,487,392 JPY	1,227,168,108 JPY	41,486,655,500 JPY	2,252,874,214 JPY	75,689,686 JPY	2,328,563,900 JPY
01.2019	25,072	38,798,575,734 JPY	1,155,562,966 JPY	39,954,138,700 JPY	1,460,911,658 JPY	71,605,142 JPY	1,532,516,800 JPY
02.2019	24,624	37,417,864,510 JPY	1,086,582,090 JPY	38,504,446,600 JPY	1,380,711,224 JPY	68,980,876 JPY	1,449,692,100 JPY
03.2019	23,995	35,635,288,944 JPY	1,020,024,856 JPY	36,655,313,800 JPY	1,782,575,566 JPY	66,557,234 JPY	1,849,132,800 JPY
04.2019	22,981	34,318,749,004 JPY	956,536,896 JPY	35,275,285,900 JPY	1,316,539,940 JPY	63,487,960 JPY	1,380,027,900 JPY
05.2019	22,501	32,901,744,643 JPY	895,290,057 JPY	33,797,034,700 JPY	1,417,004,361 JPY	61,246,839 JPY	1,478,251,200 JPY
06.2019	21,869	30,842,928,956 JPY	836,438,344 JPY	31,679,367,300 JPY	2,058,815,687 JPY	58,851,713 JPY	2,117,667,400 JPY
07.2019	21,032	29,036,446,885 JPY	781,033,815 JPY	29,817,480,700 JPY	1,806,482,071 JPY	55,404,529 JPY	1,861,886,600 JPY
08.2019	20,406	27,559,426,367 JPY	728,701,633 JPY	28,288,128,000 JPY	1,477,020,518 JPY	52,332,182 JPY	1,529,352,700 JPY
09.2019	19,741	25,760,553,982 JPY	678,760,218 JPY	26,429,314,200 JPY	1,808,872,385 JPY	49,941,415 JPY	1,858,813,800 JPY
10.2019	18,756	24,435,022,784 JPY	631,601,916 JPY	25,066,624,700 JPY	1,315,531,198 JPY	47,158,302 JPY	1,362,689,500 JPY
11.2019	18,115	22,771,182,583 JPY	586,589,717 JPY	23,357,772,300 JPY	1,663,840,201 JPY	45,012,199 JPY	1,708,852,400 JPY
12.2019	17,241	21,200,043,238 JPY	544,101,162 JPY	21,744,144,400 JPY	1,571,139,345 JPY	42,488,555 JPY	1,613,627,900 JPY
01.2020	16,761	20,147,452,337 JPY	504,386,063 JPY	20,651,838,400 JPY	1,052,590,901 JPY	39,715,099 JPY	1,092,306,000 JPY
02.2020	16,367	19,149,060,221 JPY	466,539,379 JPY	19,615,599,600 JPY	998,392,116 JPY	37,846,684 JPY	1,036,238,800 JPY
03.2020	15,812	17,957,367,547 JPY	430,426,853 JPY	18,387,794,400 JPY	1,191,692,674 JPY	36,112,526 JPY	1,227,805,200 JPY
04.2020	15,058	17,219,599,613 JPY	396,271,087 JPY	17,615,870,700 JPY	737,767,934 JPY	34,155,766 JPY	771,923,700 JPY
05.2020	14,790	16,432,251,419 JPY	363,449,281 JPY	16,795,700,700 JPY	787,348,194 JPY	32,821,806 JPY	820,170,000 JPY
06.2020	14,403	15,406,115,782 JPY	332,030,218 JPY	15,738,146,000 JPY	1,026,135,637 JPY	31,419,063 JPY	1,057,554,700 JPY
07.2020	13,984	14,488,034,883 JPY	302,497,217 JPY	14,790,532,100 JPY	918,080,899 JPY	29,533,001 JPY	947,613,900 JPY
08.2020	13,689	13,730,758,613 JPY	274,727,087 JPY	14,005,485,700 JPY	757,276,270 JPY	27,770,130 JPY	785,046,400 JPY
09.2020	13,316	13,043,497,293 JPY	248,356,207 JPY	13,291,853,500 JPY	687,261,320 JPY	26,370,880 JPY	713,632,200 JPY
10.2020	12,894	12,493,266,289 JPY	223,277,111 JPY	12,716,543,400 JPY	550,231,004 JPY	25,079,096 JPY	575,310,100 JPY
11.2020	12,639	11,945,980,118 JPY	199,289,082 JPY	12,145,269,200 JPY	547,286,171 JPY	23,988,029 JPY	571,274,200 JPY
12.2020	12,349	11,000,929,190 JPY	176,388,410 JPY	11,177,317,600 JPY	945,050,928 JPY	22,900,672 JPY	967,951,600 JPY
01.2021	11,975	10,254,084,566 JPY	155,372,334 JPY	10,409,456,900 JPY	746,844,624 JPY	21,016,076 JPY	767,860,700 JPY
02.2021	11,486	9,458,346,019 JPY	135,775,781 JPY	9,594,121,800 JPY	795,738,547 JPY	19,596,553 JPY	815,335,100 JPY
03.2021	10,747	8,537,332,918 JPY	117,682,982 JPY	8,655,015,900 JPY	921,013,101 JPY	18,092,799 JPY	939,105,900 JPY
04.2021	9,707	7,978,445,869 JPY	101,296,831 JPY	8,079,742,700 JPY	558,887,049 JPY	16,386,151 JPY	575,273,200 JPY
05.2021	9,201	7,348,691,415 JPY	86,024,885 JPY	7,434,716,300 JPY	629,754,454 JPY	15,271,946 JPY	645,026,400 JPY
06.2021	8,499	6,570,301,402 JPY	71,983,698 JPY	6,642,285,100 JPY	778,390,013 JPY	14,041,187 JPY	792,431,200 JPY
07.2021	7,752	5,711,388,896 JPY	59,510,704 JPY	5,770,899,600 JPY	858,912,506 JPY	12,472,994 JPY	871,385,500 JPY
08.2021	6,992	4,950,130,779 JPY	48,688,421 JPY	4,998,819,200 JPY	761,258,117 JPY	10,822,283 JPY	772,080,400 JPY
09.2021	6,125	3,978,881,638 JPY	39,257,262 JPY	4,018,138,900 JPY	971,249,141 JPY	9,431,159 JPY	980,680,300 JPY
10.2021	4,955	3,350,611,291 JPY	31,646,809 JPY	3,382,258,100 JPY	628,270,347 JPY	7,610,453 JPY	635,880,800 JPY
11.2021	4,231	2,558,660,971 JPY	25,200,629 JPY	2,583,861,600 JPY	791,950,320 JPY	6,446,180 JPY	798,396,500 JPY
12.2021	3,253	2,125,831,134 JPY	20,182,766 JPY	2,146,013,900 JPY	432,829,837 JPY	5,017,863 JPY	437,847,700 JPY
01.2022	2,908	1,815,766,388 JPY	16,002,012 JPY	1,831,768,400 JPY	310,064,746 JPY	4,180,754 JPY	314,245,500 JPY
02.2022	2,606	1,499,586,256 JPY	12,429,844 JPY	1,512,016,100 JPY	316,180,132 JPY	3,572,168 JPY	319,752,300 JPY
03.2022	2,245	1,080,346,452 JPY	9,466,848 JPY	1,089,813,300 JPY	419,239,804 JPY	2,962,996 JPY	422,202,800 JPY
04.2022	1,679	893,137,006 JPY	7,260,394 JPY	900,397,400 JPY	187,209,446 JPY	2,206,454 JPY	189,415,900 JPY
05.2022	1,432	698,565,603 JPY	5,413,597 JPY	703,979,200 JPY	194,571,403 JPY	1,846,797 JPY	196,418,200 JPY
06.2022	1,149	495,450,192 JPY	3,927,908 JPY	499,378,100 JPY	203,115,411 JPY	1,485,689 JPY	204,601,100 JPY
07.2022	863	357,734,738 JPY	2,833,062 JPY	360,567,800 JPY	137,715,454 JPY	1,094,846 JPY	138,810,300 JPY
08.2022	692	259,467,858 JPY	2,022,542 JPY	261,490,400 JPY	98,266,880 JPY	810,520 JPY	99,077,400 JPY
09.2022	500	149,060,194 JPY	1,413,806 JPY	150,474,000 JPY	110,407,664 JPY	608,736 JPY	111,016,400 JPY
10.2022	321	83,834,066 JPY	1,035,934 JPY	84,870,000 JPY	65,226,128 JPY	377,872 JPY	65,604,000 JPY
11.2022	224	51,859,074 JPY	810,426 JPY	52,669,500 JPY	31,974,992 JPY	225,508 JPY	32,200,500 JPY
12.2022	170	40,073,610 JPY	656,090 JPY	40,729,700 JPY	11,785,464 JPY	154,336 JPY	11,939,800 JPY
01.2023	145	32,424,082 JPY	536,118 JPY	32,960,200 JPY	7,649,528 JPY	119,972 JPY	7,769,500 JPY
02.2023	132	27,209,200 JPY	438,400 JPY	27,647,600 JPY	5,214,882 JPY	97,718 JPY	5,312,600 JPY
03.2023	113	22,758,033 JPY	355,867 JPY	23,113,900 JPY	4,451,167 JPY	82,533 JPY	4,533,700 JPY
04.2023	91	19,072,553 JPY	286,347 JPY	19,358,900 JPY	3,685,480 JPY	69,520 JPY	3,755,000 JPY
05.2023	82	15,704,375 JPY	227,825 JPY	15,932,200 JPY	3,368,178 JPY	58,522 JPY	3,426,700 JPY
06.2023	63	12,423,429 JPY	179,371 JPY	12,602,800 JPY	3,280,946 JPY	48,454 JPY	3,329,400 JPY
07.2023	48	9,276,925 JPY	140,475 JPY	9,417,400 JPY	3,146,504 JPY	38,896 JPY	3,185,400 JPY
08.2023	42	7,083,256 JPY	111,244 JPY	7,194,500 JPY	2,193,669 JPY	29,231 JPY	2,222,900 JPY
09.2023	35	5,654,553 JPY	88,847 JPY	5,743,400 JPY	1,428,703 JPY	22,397 JPY	1,451,100 JPY
10.2023	23	4,697,022 JPY	70,878 JPY	4,767,900 JPY	957,531 JPY	17,969 JPY	975,500 JPY
11.2023	13	4,166,883 JPY	55,917 JPY	4,222,800 JPY	530,139 JPY	14,961 JPY	545,100 JPY
12.2023	12	2,868,255 JPY	42,645 JPY	2,910,900 JPY	1,298,628 JPY	13,272 JPY	1,311,900 JPY
01.2024	10	2,314,191 JPY	33,509 JPY	2,347,700 JPY	554,064 JPY	9,136 JPY	563,200 JPY
02.2024	9	1,952,261 JPY	26,139 JPY	1,978,400 JPY	361,930 JPY	7,370 JPY	369,300 JPY
03.2024	7	1,670,980 JPY	19,920 JPY	1,690,900 JPY	281,281 JPY	6,219 JPY	287,500 JPY
04.2024	6	1,442,602 JPY	14,598 JPY	1,457,200 JPY	228,378 JPY	5,322 JPY	233,700 JPY
05.2024	5	1,264,097 JPY	10,003 JPY	1,274,100 JPY	178,505 JPY	4,595 JPY	183,100 JPY
06.2024	5	1,085,024 JPY	5,976 JPY	1,091,000 JPY	179,073 JPY	4,027 JPY	183,100 JPY
07.2024	5	415,380 JPY	2,520 JPY	417,900 JPY	669,644 JPY	3,456 JPY	673,100 JPY
08.2024	4	263,803 JPY	1,197 JPY	265,000 JPY	151,577 JPY	1,323 JPY	152,900 JPY
09.2024	4	111,744 JPY	356 JPY	112,100 JPY	152,059 JPY	841 JPY	152,900 JPY
10.2024	3	0 JPY	0 JPY	0 JPY	111,744 JPY	356 JPY	112,100 JPY

Expected Amortisation

Expected Amortization to the Second Trust

JPY mil.

Assuming a Clean-Up Call at 10% of the Initial Outstanding Balance, annual prepayments of 10% and 0% defaults.



Distribution by Sub-Servicer

Sub-Servicer	Number of Loans	Percentage of Loans	Outstanding Principal Balance	Percentage of Balance
Cedyna	15,095	58.62 %	25,361,239,536 JPY	59.66 %
Jaccs	10,654	41.38 %	17,151,122,070 JPY	40.34 %
Total	25,749	100.00 %	42,512,361,606 JPY	100.00 %

Distribution by Brand

Make	Number of Loans	Percentage of Loans	Outstanding Discounted Principal Balance	Percentage of Balance
VW	16,579	64.39 %	23,409,458,597 JPY	55.07 %
Audi	9,149	35.53 %	19,055,381,233 JPY	44.82 %
Bentley	12	0.05 %	41,861,463 JPY	0.10 %
Lamborghini	0	0.00 %	0 JPY	0.00 %
Other	9	0.03 %	5,660,313 JPY	0.01 %
Total	25,749	100.00 %	42,512,361,606 JPY	100.00 %

Distribution by New and Used
Distribution by New and Used

New or Used	Number of Loans	Percentage of Loans	Outstanding Discounted Principal Balance	Percentage of Balance
New	17,254	67.01 %	32,985,404,871 JPY	77.59 %
Used	7,417	28.81 %	9,066,678,573 JPY	21.33 %
Used (Prolonged)	1,078	4.19 %	460,278,162 JPY	1.08 %
Total	25,749	100.00 %	42,512,361,606 JPY	100.00 %

Distribution by Brand New and Used

New or Used	Number of Loans	Percentage of Loans	Outstanding Discounted Principal Balance	Percentage of Balance
VW New	11,774	45.73 %	19,348,481,203 JPY	45.51 %
VW Used	4,053	15.74 %	3,842,536,143 JPY	9.04 %
VW Used (Prolonged)	752	2.92 %	218,441,251 JPY	0.51 %
Audi New	5,472	21.25 %	13,612,336,958 JPY	32.02 %
Audi Used	3,351	13.01 %	5,201,207,364 JPY	12.23 %
Audi Used (Prolonged)	326	1.27 %	241,836,911 JPY	0.57 %
Other	21	0.08 %	47,521,776 JPY	0.11 %
Total	25,749	100.00 %	42,512,361,606 JPY	100.00 %

Distribution by Product Type

Loan Type List

Loan Type	Description
100	Volkswagen Owner's Plan
100	Audi Owner's Plan
100	Lamborghini Auto Loan
100	Bentley Auto Loan
101	Twin Loan
105	Refinanced Volkswagen Solutions
106	Refinanced Volkswagen Das Welt Auto with refinance option *
106	Refinanced Audi S-Loan/ S-Loan Plus
106	Refinanced Lamborghini Hyper Premium Plan
106	Refinanced Bentley My Flying B
140	Volkswagen Solutions
150	Volkswagen Das Welt Auto with refinance option **
150	Audi S-Loan
150	Lamborghini Hyper Premium Plan
150	Bentley My Flying B
151	Audi S-Loan Plus

(*) The name was changed from "Refinanced Volkswagen GUC with refinance option" effective from 1 February 2012.

No other changes were made to auto loan agreements.

(**) The name was changed from "Volkswagen GUC with refinance option" effective from 1 February 2012.

No other changes were made to auto loan agreements.

Product Type

Loan Type	Number of Loans	Percentage of Loans	Outstanding Discounted Principal Balance	Percentage of Balance
100	3,739	14.52 %	3,818,113,146 JPY	8.98 %
101	0	0.00 %	0 JPY	0.00 %
105	733	2.85 %	215,564,529 JPY	0.51 %
106	345	1.34 %	244,713,633 JPY	0.58 %
140-VFJ	1,700	6.60 %	2,794,990,230 JPY	6.57 %
140-Dealer	9,171	35.62 %	15,609,521,861 JPY	36.72 %
150	9,618	37.35 %	18,744,837,165 JPY	44.09 %
151	443	1.72 %	1,084,621,042 JPY	2.55 %
Total	25,749	100.00 %	42,512,361,606 JPY	100.00 %

Credit Type

Credit Type	Number of Loans	Percentage of Loans	Outstanding Discounted Principal Balance	Percentage of Balance
Balloon Type Loan	20,932	81.29 %	38,233,970,298 JPY	89.94 %
Equal Instalment Type Loan	4,817	18.71 %	4,278,391,308 JPY	10.06 %
Total	25,749	100.00 %	42,512,361,606 JPY	100.00 %

Distribution by RV

Loan Type	Number of Loans	Percentage of Balance	Outstanding Discounted Principal Balance
100/101/105/106	4,817	10.06 %	4,278,391,308 JPY
140-VFJ (excl. balloon)		3.39 %	1,440,344,680 JPY
140-VFJ (balloon)		3.19 %	1,354,645,550 JPY
140-VFJ	1,700	6.57 %	2,794,990,230 JPY
140-Dealer (excl. balloon)		18.83 %	8,004,542,153 JPY
140-Dealer (balloon)		17.89 %	7,604,979,708 JPY
140-Dealer	9,171	36.72 %	15,609,521,861 JPY
150 (excl. balloon)		17.82 %	7,573,721,145 JPY
150 (balloon)		26.28 %	11,171,116,020 JPY
150	9,618	44.09 %	18,744,837,165 JPY
151 (excl. balloon)		0.54 %	231,171,500 JPY
151 (balloon)		2.01 %	853,449,542 JPY
151	443	2.55 %	1,084,621,042 JPY
Total	25,749	100.00 %	42,512,361,606 JPY

Type of Payment Portion	Percentage of Balance	Outstanding Discounted Principal Balance
Monthly Installment Portion	50.64 %	21,528,170,786 JPY
Balloon Portion	49.36 %	20,984,190,820 JPY
Total	100.00 %	42,512,361,606 JPY

Distribution by Brand New and Used
Audi

New or Used	Number of Loans	Percentage of Loans	Outstanding Discounted Principal Balance	Percentage of Balance
New	5,472	59.81 %	13,612,336,958 JPY	71.44 %
Used	3,677	40.19 %	5,443,044,275 JPY	28.56 %
Total	9,149	100.00 %	19,055,381,233 JPY	100.00 %

Bentley

New or Used	Number of Loans	Percentage of Loans	Outstanding Discounted Principal Balance	Percentage of Balance
New	8	66.67 %	24,586,710 JPY	58.73 %
Used	4	33.33 %	17,274,753 JPY	41.27 %
Total	12	100.00 %	41,861,463 JPY	100.00 %

Lamborghini

New or Used	Number of Loans	Percentage of Loans	Outstanding Discounted Principal Balance	Percentage of Balance
New	0	0.00 %	0 JPY	0.00 %
Used	0	0.00 %	0 JPY	0.00 %
Total	0	0.00 %	0 JPY	0.00 %

VW

New or Used	Number of Loans	Percentage of Loans	Outstanding Discounted Principal Balance	Percentage of Balance
New	11,774	71.02 %	19,348,481,203 JPY	82.65 %
Used	4,805	28.98 %	4,060,977,394 JPY	17.35 %
Total	16,579	100.00 %	23,409,458,597 JPY	100.00 %

OTHER

New or Used	Number of Loans	Percentage of Loans	Outstanding Discounted Principal Balance	Percentage of Balance
New	0	0.00 %	0 JPY	0.00 %
Used	9	100.00 %	5,660,313 JPY	100.00 %
Total	9	100.00 %	5,660,313 JPY	100.00 %

Distribution by Customer Type

Customer Type

Customer Type	Number of Loans	Percentage of Loans	Outstanding Discounted Principal Balance	Percentage of Balance
Retail	23,289	90.45 %	36,834,724,129 JPY	86.64 %
Corporate	2,460	9.55 %	5,677,637,477 JPY	13.36 %
Total	25,749	100.00 %	42,512,361,606 JPY	100.00 %

Distribution by Outstanding Discounted Principal Balance

Outstanding Discounted Principal Balance	Number of Loans	Percentage of Loans	Outstanding Discounted Principal Balance	Percentage of Balance
<= 500,000 JPY	2,683	10.42 %	746,410,949 JPY	1.76 %
500,001 JPY - 1,000,000 JPY	4,308	16.73 %	3,296,571,151 JPY	7.75 %
1,000,001 JPY - 1,500,000 JPY	5,775	22.43 %	7,263,439,244 JPY	17.09 %
1,500,001 JPY - 2,000,000 JPY	5,417	21.04 %	9,426,052,978 JPY	22.17 %
2,000,001 JPY - 2,500,000 JPY	3,440	13.36 %	7,648,011,235 JPY	17.99 %
2,500,001 JPY - 3,000,000 JPY	1,692	6.57 %	4,596,864,242 JPY	10.81 %
3,000,001 JPY - 3,500,000 JPY	982	3.81 %	3,174,335,287 JPY	7.47 %
3,500,001 JPY - 4,000,000 JPY	636	2.47 %	2,374,802,861 JPY	5.59 %
4,000,001 JPY - 4,500,000 JPY	341	1.32 %	1,441,568,840 JPY	3.39 %
4,500,001 JPY - 5,000,000 JPY	208	0.81 %	981,431,108 JPY	2.31 %
5,000,001 JPY - 6,000,000 JPY	180	0.70 %	977,098,069 JPY	2.30 %
6,000,001 JPY - 7,000,000 JPY	65	0.25 %	418,504,338 JPY	0.98 %
7,000,001 JPY - 8,000,000 JPY	18	0.07 %	132,631,016 JPY	0.31 %
8,000,001 JPY - 9,000,000 JPY	4	0.02 %	34,640,288 JPY	0.08 %
9,000,001 JPY - 10,000,000 JPY	0	0.00 %	0 JPY	0.00 %
>= 10,000,001 JPY	0	0.00 %	0 JPY	0.00 %
Total	25,749	100.00 %	42,512,361,606 JPY	100.00 %

Statistics

Minimum Outstanding Discounted Principal Balance	8,873 JPY
Maximum Outstanding Discounted Principal Balance	8,852,487 JPY
Average Outstanding Discounted Principal Balance	1,651,030 JPY

Distribution by Original Principal Amount

Original Principal Balance	Number of Loans	Percentage of Loans	Outstanding Discounted Principal Balance	Percentage of Balance
<= 500,000 JPY	147	0.57 %	24,212,517 JPY	0.06 %
500,001 JPY - 1,000,000 JPY	1,479	5.74 %	558,829,023 JPY	1.31 %
1,000,001 JPY - 1,500,000 JPY	2,780	10.80 %	1,924,684,309 JPY	4.53 %
1,500,001 JPY - 2,000,000 JPY	4,195	16.29 %	4,354,049,289 JPY	10.24 %
2,000,001 JPY - 2,500,000 JPY	4,385	17.03 %	5,993,217,707 JPY	14.10 %
2,500,001 JPY - 3,000,000 JPY	4,264	16.56 %	7,153,047,257 JPY	16.83 %
3,000,001 JPY - 3,500,000 JPY	2,979	11.57 %	5,967,281,789 JPY	14.04 %
3,500,001 JPY - 4,000,000 JPY	1,931	7.50 %	4,471,211,086 JPY	10.52 %
4,000,001 JPY - 4,500,000 JPY	1,060	4.12 %	2,831,482,051 JPY	6.66 %
4,500,001 JPY - 5,000,000 JPY	809	3.14 %	2,397,196,154 JPY	5.64 %
5,000,001 JPY - 6,000,000 JPY	809	3.14 %	2,768,779,477 JPY	6.51 %
6,000,001 JPY - 7,000,000 JPY	460	1.79 %	1,840,572,436 JPY	4.33 %
7,000,001 JPY - 8,000,000 JPY	203	0.79 %	914,611,314 JPY	2.15 %
8,000,001 JPY - 9,000,000 JPY	114	0.44 %	578,445,221 JPY	1.36 %
9,000,001 JPY - 10,000,000 JPY	66	0.26 %	380,652,125 JPY	0.90 %
>= 10,000,001 JPY	68	0.26 %	354,089,851 JPY	0.83 %
Total	25,749	100.00 %	42,512,361,606 JPY	100.00 %

Statistics

Minimum Original Principal Balance	170,000 JPY
Maximum Original Principal Balance	25,000,000 JPY
Average Original Principal Balance	2,758,591 JPY

Distribution by Interest Rate paid by the Obligor

Interest Rate paid by the Obligor	Number of Loans	Percentage of Loans	Outstanding Discounted Principal Balance	Percentage of Balance
< 0.900 %	576	2.24 %	1,279,450,494 JPY	3.01 %
0.900 % < 1.500 %	4,826	18.74 %	9,644,452,318 JPY	22.69 %
1.500 % < 2.000 %	9,616	37.35 %	17,141,671,846 JPY	40.32 %
2.000 % < 2.500 %	245	0.95 %	369,371,510 JPY	0.87 %
2.500 % < 3.000 %	6,008	23.33 %	9,293,725,171 JPY	21.86 %
3.000 % < 3.500 %	987	3.83 %	662,014,907 JPY	1.56 %
3.500 % < 4.000 %	3,459	13.43 %	4,093,505,193 JPY	9.63 %
4.000 % < 4.500 %	32	0.12 %	28,170,167 JPY	0.07 %
4.500 % < 5.000 %	0	0.00 %	0 JPY	0.00 %
5.000 % or more	0	0.00 %	0 JPY	0.00 %
Total	25,749	100.00 %	42,512,361,606 JPY	100.00 %

Statistics	
Minimum Interest Rate	0.00 %
Maximum Interest Rate	4.49 %
Weighted Average Interest Rate	2.09 %

Distribution by Original Term

Length of Original Term (months)	Number of Loans	Percentage of Loans	Outstanding Discounted Principal Balance	Percentage of Balance
6 - 12	0	0.00 %	0 JPY	0.00 %
13 - 18	12	0.05 %	1,637,767 JPY	0.00 %
19 - 24	383	1.49 %	134,616,015 JPY	0.32 %
25 - 30	60	0.23 %	20,882,439 JPY	0.05 %
31 - 36	8,799	34.17 %	15,582,274,819 JPY	36.65 %
37 - 42	67	0.26 %	34,079,117 JPY	0.08 %
43 - 48	1,436	5.58 %	1,481,644,136 JPY	3.49 %
49 - 54	24	0.09 %	22,748,767 JPY	0.05 %
55 - 60	14,157	54.98 %	23,898,473,158 JPY	56.22 %
61 - 66	18	0.07 %	22,592,395 JPY	0.05 %
67 - 72	628	2.44 %	948,302,510 JPY	2.23 %
73 - 84	165	0.64 %	365,110,483 JPY	0.86 %
Total	25,749	100.00 %	42,512,361,606 JPY	100.00 %

Statistics	
Minimum Original Term in months	15
Maximum Original Term in months	84
Weighted Average Original Term in months	51.11

Distribution by Remaining Term

Length of Remaining Term (months)	Number of Loans	Percentage of Loans	Outstanding Discounted Principal Balance	Percentage of Balance
<= 12	8,508	33.04 %	11,863,654,522 JPY	27.91 %
13 - 18	2,838	11.02 %	4,498,830,893 JPY	10.58 %
19 - 24	2,054	7.98 %	3,234,170,549 JPY	7.61 %
25 - 30	3,850	14.95 %	6,075,065,264 JPY	14.29 %
31 - 36	5,246	20.37 %	9,863,033,393 JPY	23.20 %
37 - 42	2,104	8.17 %	4,358,700,768 JPY	10.25 %
43 - 48	979	3.80 %	2,218,129,547 JPY	5.22 %
49 - 54	107	0.42 %	238,871,987 JPY	0.56 %
55 - 60	51	0.20 %	121,629,729 JPY	0.29 %
61 - 66	7	0.03 %	23,483,668 JPY	0.06 %
67 - 72	5	0.02 %	16,791,286 JPY	0.04 %
73 - 84	0	0.00 %	0 JPY	0.00 %
Total	25,749	100.00 %	42,512,361,606 JPY	100.00 %

Statistics	
Minimum Remaining Term in months	1
Maximum Remaining Term in months	71
Weighted Average Remaining Term in months	24.02

Distribution by Seasoning

Seasoning (months)	Number of Loans	Percentage of Loans	Outstanding Discounted Principal Balance	Percentage of Balance
<= 12	69	0.27 %	179,456,331 JPY	0.42 %
13 - 18	2,122	8.24 %	4,430,064,041 JPY	10.42 %
19 - 24	5,526	21.46 %	10,606,373,362 JPY	24.95 %
25 - 30	9,023	35.04 %	15,842,352,464 JPY	37.27 %
31 - 36	5,779	22.44 %	8,539,996,368 JPY	20.09 %
37 - 42	1,062	4.12 %	1,218,890,804 JPY	2.87 %
43 - 48	887	3.44 %	812,140,196 JPY	1.91 %
49 - 54	606	2.35 %	479,419,263 JPY	1.13 %
55 - 60	628	2.44 %	382,228,490 JPY	0.90 %
61 - 66	21	0.08 %	13,605,377 JPY	0.03 %
67 - 72	24	0.09 %	6,906,152 JPY	0.02 %
73 - 84	2	0.01 %	928,758 JPY	0.00 %
Total	25,749	100.00 %	42,512,361,606 JPY	100.00 %

Statistics	
Minimum Seasoning in months	12
Maximum Seasoning in months	74
Weighted Average Seasoning in months	27.09

Distribution by Type of Car

Type of Car

Type of Car	Number of Loans	Percentage of Loans	Outstanding Discounted Principal Balance	Percentage of Balance
New	17,254	67.01 %	32,985,404,871 JPY	77.59 %
Used	8,495	32.99 %	9,526,956,735 JPY	22.41 %
Total	25,749	100.00 %	42,512,361,606 JPY	100.00 %

Type of Car: Only Balloon Loans

Type of Car	Number of Loans	Percentage of Loans	Outstanding Discounted Principal Balance	Percentage of Balance
New	16,140	77.11 %	31,739,083,492 JPY	83.01 %
Used	4,792	22.89 %	6,494,886,806 JPY	16.99 %
Total	20,932	100.00 %	38,233,970,298 JPY	100.00 %

Type of Car: Only Equal Instalment Loans

Type of Car	Number of Loans	Percentage of Loans	Outstanding Discounted Principal Balance	Percentage of Balance
New	1,114	23.13 %	1,246,321,379 JPY	29.13 %
Used	3,703	76.87 %	3,032,069,929 JPY	70.87 %
Total	4,817	100.00 %	4,278,391,308 JPY	100.00 %

Distribution by Brand and Model

Make	Model	Number of Loans	Percentage of Loans	Outstanding Discounted Principal Balance	Percentage of Balance
Audi	A1	841	3.27 %	1,010,069,301 JPY	2.38 %
	A3	2,346	9.11 %	3,608,549,784 JPY	8.49 %
	A4	1,929	7.49 %	4,256,347,566 JPY	10.01 %
	A5	427	1.66 %	979,652,368 JPY	2.30 %
	A6	556	2.16 %	1,360,008,686 JPY	3.20 %
	A7	215	0.83 %	672,970,753 JPY	1.58 %
	A8	64	0.25 %	221,158,977 JPY	0.52 %
	S1	84	0.33 %	159,178,013 JPY	0.37 %
	S3	289	1.12 %	713,964,980 JPY	1.68 %
	S4	76	0.30 %	224,615,759 JPY	0.53 %
	S5	45	0.17 %	134,015,242 JPY	0.32 %
	S6	32	0.12 %	126,129,928 JPY	0.30 %
	S7	19	0.07 %	66,990,350 JPY	0.16 %
	S8	14	0.05 %	58,072,338 JPY	0.14 %
	RS3	34	0.13 %	111,692,705 JPY	0.26 %
	RS4	12	0.05 %	37,340,687 JPY	0.09 %
	RS5	12	0.05 %	44,420,636 JPY	0.10 %
	RS6	12	0.05 %	45,174,893 JPY	0.11 %
	RS7	10	0.04 %	43,613,918 JPY	0.10 %
	Q2	58	0.23 %	155,888,526 JPY	0.37 %
	Q3	750	2.91 %	1,454,591,064 JPY	3.42 %
	Q5	456	1.77 %	1,135,745,625 JPY	2.67 %
	Q7	171	0.66 %	726,463,265 JPY	1.71 %
	RSQ3	21	0.08 %	80,256,123 JPY	0.19 %
	TT	667	2.59 %	1,586,712,821 JPY	3.73 %
	R8	9	0.03 %	41,756,925 JPY	0.10 %
	AUDI OTHERS	0	0.00 %	0 JPY	0.00 %
	Subtotal	9,149	35.53 %	19,055,381,233 JPY	44.82 %
Bentley	ARNAGE	0	0.00 %	0 JPY	0.00 %
	AZURE	0	0.00 %	0 JPY	0.00 %
	BENTAYGA	1	0.00 %	6,679,722 JPY	0.02 %
	CONTINENTAL	10	0.04 %	33,872,048 JPY	0.08 %
	FLYING SPUR	0	0.00 %	0 JPY	0.00 %
	MULSANNE	1	0.00 %	1,309,693 JPY	0.00 %
	BENTLEY OTHERS	0	0.00 %	0 JPY	0.00 %
		Subtotal	12	0.05 %	41,861,463 JPY
Lamborghini	AVENTADOR	0	0.00 %	0 JPY	0.00 %
	DIABLO	0	0.00 %	0 JPY	0.00 %
	GALLARDO	0	0.00 %	0 JPY	0.00 %
	HURACÁN	0	0.00 %	0 JPY	0.00 %
	MULCIELAGO	0	0.00 %	0 JPY	0.00 %
	LAMBORGHINI OTHERS	0	0.00 %	0 JPY	0.00 %
		Subtotal	0	0.00 %	0 JPY
VW	ARTEON	1	0.00 %	3,795,381 JPY	0.01 %
	BEETLE	1,684	6.54 %	2,229,833,030 JPY	5.25 %
	BORA	0	0.00 %	0 JPY	0.00 %
	EOS	0	0.00 %	0 JPY	0.00 %
	GOLF	6,302	24.47 %	9,579,472,938 JPY	22.53 %
	JETTA	8	0.03 %	2,193,746 JPY	0.01 %
	LUPO	1	0.00 %	1,158,011 JPY	0.00 %
	PASSAT	1,475	5.73 %	2,566,711,175 JPY	6.04 %
	POLO	3,456	13.42 %	3,821,311,273 JPY	8.99 %
	SCIROCCO	34	0.13 %	29,202,558 JPY	0.07 %
	SHARAN	584	2.27 %	987,531,755 JPY	2.32 %
	TIGUAN	563	2.19 %	1,030,141,452 JPY	2.42 %
	TOUAREG	61	0.24 %	125,175,310 JPY	0.29 %
	TOURAN	1,369	5.32 %	2,292,397,324 JPY	5.39 %
	UP	1,041	4.04 %	740,534,644 JPY	1.74 %
	VENTO	0	0.00 %	0 JPY	0.00 %
	VW OTHERS	0	0.00 %	0 JPY	0.00 %
		Subtotal	16,579	64.38 %	23,409,458,597 JPY
Non VW Group Vehicles		9	0.03 %	5,660,313 JPY	0.01 %
	Subtotal	9	0.03 %	5,660,313 JPY	0.01 %
	Total	25,749	100.00 %	42,512,361,606 JPY	100.00 %

Geographic Distribution by Prefecture

Prefecture	Number of Loans	Percentage of Loans	Outstanding Discounted Principal Balance	Percentage of Balance
Tokyo	3,891	15.11 %	7,324,017,535 JPY	17.23 %
Kanagawa	2,517	9.78 %	4,295,328,054 JPY	10.10 %
Aichi	1,854	7.20 %	2,942,430,599 JPY	6.92 %
Saitama	1,686	6.55 %	2,699,710,652 JPY	6.35 %
Osaka	1,520	5.90 %	2,655,772,099 JPY	6.25 %
Chiba	1,160	4.51 %	1,854,960,873 JPY	4.36 %
Fukuoka	1,089	4.23 %	1,824,809,635 JPY	4.29 %
Hokkaido	980	3.81 %	1,734,297,780 JPY	4.08 %
Hyogo	957	3.72 %	1,575,946,667 JPY	3.71 %
Shizuoka	764	2.97 %	1,248,939,211 JPY	2.94 %
Ibaraki	813	3.16 %	1,245,500,329 JPY	2.93 %
Tochigi	574	2.23 %	941,390,543 JPY	2.21 %
Hiroshima	618	2.40 %	925,301,420 JPY	2.18 %
Kyoto	501	1.95 %	781,005,560 JPY	1.84 %
Miyagi	484	1.88 %	763,380,375 JPY	1.80 %
Gunma	517	2.01 %	740,985,100 JPY	1.74 %
Okayama	365	1.42 %	590,963,496 JPY	1.39 %
Gifu	392	1.52 %	582,520,896 JPY	1.37 %
Nagano	385	1.50 %	571,488,465 JPY	1.34 %
Mie	338	1.31 %	499,895,946 JPY	1.18 %
Fukushima	315	1.22 %	456,473,444 JPY	1.07 %
Yamaguchi	267	1.04 %	417,794,368 JPY	0.98 %
Niigata	293	1.14 %	407,267,378 JPY	0.96 %
Oita	232	0.90 %	351,156,847 JPY	0.83 %
Nara	220	0.85 %	349,714,677 JPY	0.82 %
Yamanashi	195	0.76 %	333,610,697 JPY	0.78 %
Shiga	210	0.82 %	320,648,214 JPY	0.75 %
Ishikawa	203	0.79 %	316,794,722 JPY	0.75 %
Kumamoto	212	0.82 %	312,380,564 JPY	0.73 %
Toyama	199	0.77 %	303,444,727 JPY	0.71 %
Kagoshima	182	0.71 %	298,540,822 JPY	0.70 %
Wakayama	164	0.64 %	286,429,519 JPY	0.67 %
Yamagata	189	0.73 %	275,090,229 JPY	0.65 %
Fukui	161	0.63 %	274,285,543 JPY	0.65 %
Iwate	131	0.51 %	207,241,146 JPY	0.49 %
Tokushima	121	0.47 %	199,750,162 JPY	0.47 %
Nagasaki	129	0.50 %	194,061,556 JPY	0.46 %
Kagawa	136	0.53 %	187,214,845 JPY	0.44 %
Miyazaki	114	0.44 %	184,425,771 JPY	0.43 %
Saga	114	0.44 %	183,523,488 JPY	0.43 %
Shimane	92	0.36 %	164,853,025 JPY	0.39 %
Ehime	113	0.44 %	164,082,922 JPY	0.39 %
Aomori	90	0.35 %	137,902,792 JPY	0.32 %
Akita	86	0.33 %	134,945,389 JPY	0.32 %
Tottori	84	0.33 %	116,670,999 JPY	0.27 %
Kouchi	56	0.22 %	82,999,098 JPY	0.20 %
Okinawa	36	0.14 %	52,413,427 JPY	0.12 %
Total	25,749	100.00 %	42,512,361,606 JPY	100.00 %

Distribution by Obligor Concentration

Distribution of Loan Contracts and Vehicles per Obligor

Contract Concentration	Number of Customers	Percentage of Customers	Number of Loans	Percentage of Loans	Outstanding Discounted Principal Balance	Percentage of Balance
1	24,794	96.74 %	24,794	96.29 %	40,656,174,068 JPY	95.63 %
2	777	3.03 %	882	3.43 %	1,670,889,389 JPY	3.93 %
3	53	0.21 %	61	0.24 %	163,434,572 JPY	0.38 %
4	6	0.02 %	12	0.05 %	21,863,577 JPY	0.05 %
5	0	0.00 %	0	0.00 %	0 JPY	0.00 %
6 - 10	0	0.00 %	0	0.00 %	0 JPY	0.00 %
11 or more	0	0.00 %	0	0.00 %	0 JPY	0.00 %
Total	25,630	100.00 %	25,749	100.00 %	42,512,361,606 JPY	100.00 %

Top 20 Obligor

Number	Number of Contracts	Outstanding Discounted Principal Balance	Percentage of Balance
1	2	12,707,710 JPY	0.03 %
2	2	11,379,818 JPY	0.03 %
3	2	11,235,104 JPY	0.03 %
4	2	10,775,497 JPY	0.03 %
5	2	9,084,226 JPY	0.02 %
6	1	8,852,487 JPY	0.02 %
7	1	8,847,734 JPY	0.02 %
8	1	8,527,901 JPY	0.02 %
9	1	8,412,166 JPY	0.02 %
10	2	8,153,575 JPY	0.02 %
11	1	7,902,266 JPY	0.02 %
12	1	7,872,559 JPY	0.02 %
13	2	7,844,074 JPY	0.02 %
14	1	7,740,365 JPY	0.02 %
15	1	7,596,844 JPY	0.02 %
16	1	7,474,964 JPY	0.02 %
17	1	7,423,861 JPY	0.02 %
18	2	7,413,637 JPY	0.02 %
19	2	7,398,137 JPY	0.02 %
20	1	7,375,407 JPY	0.02 %
Total 1 -20	29	174,018,332 JPY	0.41 %

Remarks:

Figures above are calculated based on each of the Sub-Servicers respectively and not across both of the Sub-Servicers.

Distribution by Contract Start Month

Origination Month	Number of Loans	Percentage of Loans	Outstanding Discounted Principal Balance	Percentage of Balance
09.2012	2	0.01 %	928,758 JPY	0.00 %
10.2012	0	0.00 %	0 JPY	0.00 %
11.2012	0	0.00 %	0 JPY	0.00 %
12.2012	6	0.02 %	1,677,479 JPY	0.00 %
01.2013	3	0.01 %	254,149 JPY	0.00 %
02.2013	4	0.02 %	1,620,392 JPY	0.00 %
03.2013	9	0.03 %	3,123,192 JPY	0.01 %
04.2013	2	0.01 %	230,940 JPY	0.00 %
05.2013	0	0.00 %	0 JPY	0.00 %
06.2013	2	0.01 %	653,058 JPY	0.00 %
07.2013	7	0.03 %	3,315,641 JPY	0.01 %
08.2013	4	0.02 %	6,199,152 JPY	0.01 %
09.2013	5	0.02 %	2,577,808 JPY	0.01 %
10.2013	3	0.01 %	859,718 JPY	0.00 %
11.2013	2	0.01 %	1,791,888 JPY	0.00 %
12.2013	124	0.48 %	65,563,289 JPY	0.15 %
01.2014	81	0.31 %	47,842,421 JPY	0.11 %
02.2014	146	0.57 %	86,485,076 JPY	0.20 %
03.2014	216	0.84 %	139,570,315 JPY	0.33 %
04.2014	59	0.23 %	40,975,501 JPY	0.10 %
05.2014	89	0.35 %	61,349,709 JPY	0.14 %
06.2014	127	0.49 %	92,694,764 JPY	0.22 %
07.2014	92	0.36 %	73,062,923 JPY	0.17 %
08.2014	66	0.26 %	55,622,620 JPY	0.13 %
09.2014	142	0.55 %	123,060,605 JPY	0.29 %
10.2014	90	0.35 %	73,628,642 JPY	0.17 %
11.2014	103	0.40 %	91,666,240 JPY	0.22 %
12.2014	159	0.62 %	153,414,996 JPY	0.36 %
01.2015	112	0.43 %	94,452,485 JPY	0.22 %
02.2015	197	0.77 %	185,992,249 JPY	0.44 %
03.2015	223	0.87 %	205,181,625 JPY	0.48 %
04.2015	93	0.36 %	81,432,601 JPY	0.19 %
05.2015	173	0.67 %	169,578,824 JPY	0.40 %
06.2015	180	0.70 %	182,467,554 JPY	0.43 %
07.2015	131	0.51 %	146,572,353 JPY	0.34 %
08.2015	176	0.68 %	201,474,931 JPY	0.47 %
09.2015	235	0.91 %	301,178,671 JPY	0.71 %
10.2015	167	0.65 %	217,618,471 JPY	0.51 %
11.2015	180	0.70 %	257,729,804 JPY	0.61 %
12.2015	850	3.30 %	1,093,062,277 JPY	2.57 %
01.2016	819	3.18 %	1,189,712,398 JPY	2.80 %
02.2016	1,191	4.63 %	1,782,121,247 JPY	4.19 %
03.2016	1,825	7.09 %	2,721,241,987 JPY	6.40 %
04.2016	914	3.55 %	1,496,128,655 JPY	3.52 %
05.2016	1,259	4.89 %	1,982,785,689 JPY	4.66 %
06.2016	1,452	5.64 %	2,513,099,990 JPY	5.91 %
07.2016	1,342	5.21 %	2,281,665,130 JPY	5.37 %
08.2016	1,583	6.15 %	2,759,925,859 JPY	6.49 %
09.2016	2,072	8.05 %	3,843,041,548 JPY	9.04 %
10.2016	1,315	5.11 %	2,461,834,248 JPY	5.79 %
11.2016	1,843	7.16 %	3,607,282,173 JPY	8.49 %
12.2016	750	2.91 %	1,347,542,117 JPY	3.17 %
01.2017	621	2.41 %	1,173,516,154 JPY	2.76 %
02.2017	751	2.92 %	1,457,173,692 JPY	3.43 %
03.2017	1,121	4.35 %	2,153,970,379 JPY	5.07 %
04.2017	440	1.71 %	866,888,847 JPY	2.04 %
05.2017	505	1.96 %	1,035,828,176 JPY	2.44 %
06.2017	557	2.16 %	1,128,363,432 JPY	2.65 %
07.2017	295	1.15 %	584,628,869 JPY	1.38 %
08.2017	288	1.12 %	628,445,433 JPY	1.48 %
09.2017	319	1.24 %	698,895,542 JPY	1.64 %
10.2017	158	0.61 %	353,902,589 JPY	0.83 %
11.2017	69	0.27 %	179,456,331 JPY	0.42 %
12.2017	0	0.00 %	0 JPY	0.00 %
01.2018	0	0.00 %	0 JPY	0.00 %
02.2018	0	0.00 %	0 JPY	0.00 %
03.2018	0	0.00 %	0 JPY	0.00 %
04.2018	0	0.00 %	0 JPY	0.00 %
05.2018	0	0.00 %	0 JPY	0.00 %
06.2018	0	0.00 %	0 JPY	0.00 %
07.2018	0	0.00 %	0 JPY	0.00 %
08.2018	0	0.00 %	0 JPY	0.00 %
09.2018	0	0.00 %	0 JPY	0.00 %
10.2018	0	0.00 %	0 JPY	0.00 %
11.2018	0	0.00 %	0 JPY	0.00 %
Total	25,749	100.00 %	42,512,361,606 JPY	100.00 %

Distribution by Contract End Month

Maturity Month	Number of Loans	Percentage of Loans	Outstanding Discounted Principal Balance	Percentage of Balance
12.2018	677	2.63 %	613,443,183 JPY	1.44 %
01.2019	448	1.74 %	471,684,320 JPY	1.11 %
02.2019	629	2.44 %	664,222,425 JPY	1.56 %
03.2019	1,014	3.94 %	1,176,703,031 JPY	2.77 %
04.2019	480	1.86 %	677,929,901 JPY	1.59 %
05.2019	632	2.45 %	847,401,366 JPY	1.99 %
06.2019	837	3.25 %	1,258,599,492 JPY	2.96 %
07.2019	626	2.43 %	932,097,774 JPY	2.19 %
08.2019	665	2.58 %	1,008,759,926 JPY	2.37 %
09.2019	985	3.83 %	1,625,231,649 JPY	3.82 %
10.2019	641	2.49 %	1,025,680,922 JPY	2.41 %
11.2019	874	3.39 %	1,561,900,533 JPY	3.67 %
12.2019	480	1.86 %	762,626,426 JPY	1.79 %
01.2020	394	1.53 %	605,123,059 JPY	1.42 %
02.2020	555	2.16 %	840,544,308 JPY	1.98 %
03.2020	754	2.93 %	1,193,541,196 JPY	2.81 %
04.2020	268	1.04 %	469,474,148 JPY	1.10 %
05.2020	387	1.50 %	627,521,756 JPY	1.48 %
06.2020	419	1.63 %	690,580,601 JPY	1.62 %
07.2020	295	1.15 %	421,128,000 JPY	0.99 %
08.2020	373	1.45 %	607,200,260 JPY	1.43 %
09.2020	422	1.64 %	672,114,190 JPY	1.58 %
10.2020	255	0.99 %	391,314,898 JPY	0.92 %
11.2020	290	1.13 %	451,832,600 JPY	1.06 %
12.2020	374	1.45 %	529,495,769 JPY	1.25 %
01.2021	489	1.90 %	751,192,294 JPY	1.77 %
02.2021	739	2.87 %	1,194,423,524 JPY	2.81 %
03.2021	1,040	4.04 %	1,652,730,317 JPY	3.89 %
04.2021	506	1.97 %	825,941,444 JPY	1.94 %
05.2021	702	2.73 %	1,121,281,916 JPY	2.64 %
06.2021	747	2.90 %	1,310,651,560 JPY	3.08 %
07.2021	760	2.95 %	1,337,541,169 JPY	3.15 %
08.2021	867	3.37 %	1,584,018,646 JPY	3.73 %
09.2021	1,170	4.54 %	2,203,810,078 JPY	5.18 %
10.2021	724	2.81 %	1,426,108,128 JPY	3.35 %
11.2021	978	3.80 %	2,000,903,812 JPY	4.71 %
12.2021	345	1.34 %	696,353,476 JPY	1.64 %
01.2022	302	1.17 %	653,881,775 JPY	1.54 %
02.2022	361	1.40 %	768,493,316 JPY	1.81 %
03.2022	566	2.20 %	1,156,198,583 JPY	2.72 %
04.2022	247	0.96 %	487,506,400 JPY	1.15 %
05.2022	283	1.10 %	596,267,218 JPY	1.40 %
06.2022	286	1.11 %	624,087,419 JPY	1.47 %
07.2022	171	0.66 %	378,418,662 JPY	0.89 %
08.2022	192	0.75 %	427,746,374 JPY	1.01 %
09.2022	179	0.70 %	429,477,064 JPY	1.01 %
10.2022	97	0.38 %	232,254,210 JPY	0.55 %
11.2022	54	0.21 %	126,145,818 JPY	0.30 %
12.2022	25	0.10 %	53,591,684 JPY	0.13 %
01.2023	13	0.05 %	23,972,059 JPY	0.06 %
02.2023	19	0.07 %	45,315,156 JPY	0.11 %
03.2023	22	0.09 %	45,082,711 JPY	0.11 %
04.2023	9	0.03 %	19,604,857 JPY	0.05 %
05.2023	19	0.07 %	51,305,520 JPY	0.12 %
06.2023	15	0.06 %	30,821,378 JPY	0.07 %
07.2023	6	0.02 %	14,524,787 JPY	0.03 %
08.2023	7	0.03 %	19,061,617 JPY	0.04 %
09.2023	12	0.05 %	30,760,061 JPY	0.07 %
10.2023	10	0.04 %	24,375,122 JPY	0.06 %
11.2023	1	0.00 %	2,086,764 JPY	0.00 %
12.2023	2	0.01 %	8,182,355 JPY	0.02 %
01.2024	1	0.00 %	2,466,342 JPY	0.01 %
02.2024	2	0.01 %	5,759,367 JPY	0.01 %
03.2024	1	0.00 %	4,109,002 JPY	0.01 %
04.2024	1	0.00 %	2,966,602 JPY	0.01 %
05.2024	0	0.00 %	0 JPY	0.00 %
06.2024	0	0.00 %	0 JPY	0.00 %
07.2024	1	0.00 %	3,891,339 JPY	0.01 %
08.2024	0	0.00 %	0 JPY	0.00 %
09.2024	1	0.00 %	2,556,367 JPY	0.01 %
10.2024	3	0.01 %	10,343,580 JPY	0.02 %
Total	25,749	100.00 %	42,512,361,606 JPY	100.00 %

Distribution by Monthly Payment

Monthly Payment	Number of Loans	Percentage of Loans	Outstanding Discounted Principal Balance	Percentage of Balance
<= 10,000 JPY	1,286	4.99 %	1,385,056,334 JPY	3.26 %
10,001 JPY - 20,000 JPY	4,900	19.03 %	5,741,339,966 JPY	13.51 %
20,001 JPY - 30,000 JPY	6,986	27.13 %	9,504,056,645 JPY	22.36 %
30,001 JPY - 40,000 JPY	5,221	20.28 %	8,567,635,209 JPY	20.15 %
40,001 JPY - 50,000 JPY	2,911	11.31 %	5,532,581,339 JPY	13.01 %
50,001 JPY - 60,000 JPY	1,674	6.50 %	3,592,511,733 JPY	8.45 %
60,001 JPY - 70,000 JPY	887	3.44 %	2,152,059,107 JPY	5.06 %
70,001 JPY - 80,000 JPY	503	1.95 %	1,348,467,717 JPY	3.17 %
80,001 JPY - 90,000 JPY	364	1.41 %	1,045,478,706 JPY	2.46 %
90,001 JPY - 100,000 JPY	292	1.13 %	908,227,024 JPY	2.14 %
100,001 JPY - 110,000 JPY	195	0.76 %	624,022,395 JPY	1.47 %
110,001 JPY - 120,000 JPY	127	0.49 %	489,007,867 JPY	1.15 %
120,001 JPY - 130,000 JPY	107	0.42 %	404,989,236 JPY	0.95 %
130,001 JPY - 140,000 JPY	65	0.25 %	267,517,570 JPY	0.63 %
140,001 JPY - 150,000 JPY	50	0.19 %	219,978,488 JPY	0.52 %
>= 150,001 JPY	181	0.70 %	729,432,270 JPY	1.72 %
Total	25,749	100.00 %	42,512,361,606 JPY	100.00 %

Distribution by Bonus Payment

Bonus Payment	Number of Loans	Percentage of Loans	Outstanding Discounted Principal Balance	Percentage of Balance
No Bonus Payment	15,314	59.47 %	24,639,077,114 JPY	57.96 %
1 JPY - 25,000 JPY	248	0.96 %	292,664,148 JPY	0.69 %
25,001 JPY - 50,000 JPY	2,621	10.18 %	3,593,655,338 JPY	8.45 %
50,001 JPY - 75,000 JPY	922	3.58 %	1,416,588,701 JPY	3.33 %
75,001 JPY - 100,000 JPY	3,617	14.05 %	6,072,252,183 JPY	14.28 %
100,001 JPY - 125,000 JPY	451	1.75 %	798,144,255 JPY	1.88 %
125,001 JPY - 150,000 JPY	1,408	5.47 %	2,848,642,589 JPY	6.70 %
150,001 JPY - 175,000 JPY	153	0.59 %	311,648,384 JPY	0.73 %
175,001 JPY - 200,000 JPY	615	2.39 %	1,441,453,230 JPY	3.39 %
200,001 JPY - 225,000 JPY	39	0.15 %	86,294,069 JPY	0.20 %
225,001 JPY - 250,000 JPY	164	0.64 %	414,939,713 JPY	0.98 %
250,001 JPY - 275,000 JPY	13	0.05 %	37,940,540 JPY	0.09 %
275,001 JPY - 300,000 JPY	118	0.46 %	343,643,048 JPY	0.81 %
300,001 JPY - 325,000 JPY	7	0.03 %	20,160,932 JPY	0.05 %
325,001 JPY - 350,000 JPY	21	0.08 %	64,660,345 JPY	0.15 %
350,001 JPY - 375,000 JPY	4	0.02 %	17,103,874 JPY	0.04 %
375,001 JPY - 400,000 JPY	15	0.06 %	61,626,853 JPY	0.14 %
400,001 JPY - 425,000 JPY	0	0.00 %	0 JPY	0.00 %
425,001 JPY - 450,000 JPY	2	0.01 %	6,487,904 JPY	0.02 %
450,001 JPY - 475,000 JPY	0	0.00 %	0 JPY	0.00 %
475,001 JPY - 500,000 JPY	15	0.06 %	37,416,636 JPY	0.09 %
500,001 JPY or more	2	0.01 %	7,961,750 JPY	0.02 %
Total	25,749	100.00 %	42,512,361,606 JPY	100.00 %

Distribution by Motor Type

Motor Type	Number of Loans	Percentage of Loans	Outstanding Discounted Principal Balance	Percentage of Balance
EA 189	0	0.00 %	0 JPY	0.00 %
Other	25,749	100.00 %	42,512,361,606 JPY	100.00 %
Total	25,749	100.00 %	42,512,361,606 JPY	100.00 %

Disclaimer

This presentation contains forward-looking statements and information on the business development of the Volkswagen Group. These statements may be spoken or written and can be recognized by terms such as "expects", "anticipates", "intends", "plans", "believes", "seeks", "estimates", "will", or words with similar meaning. These statements are based on assumptions relating to the development of the economies of individual countries, and in particular of the automotive industry, which we have made on the basis of the information available to us and which we consider to be realistic at the time of going to press. The estimates given involve a degree of risk, and the actual developments may differ from those forecast.

Consequently, any unexpected fall in demand or economic stagnation in our key sales markets, such as in Western Europe (and especially Germany) or in the USA, Brazil or China, will have a corresponding impact on the development of our business. The same applies in the event of a significant shift in current exchange rates relative to the US dollar, sterling, yen, Brazilian real, Chinese renminbi and Czech koruna.

If any of these or other risks occur, or if the assumptions underlying any of these statements prove incorrect, the actual results may significantly differ from those expressed or implied by such statements.

We do not update forward-looking statements retrospectively. Such statements are valid on the date of publication and can be superceded.

This information does not constitute an offer to exchange or sell or an offer to exchange or buy any securities.