

Deal Name: Driver Japan six

Originator: Volkswagen Financial Services Japan Ltd.
Gotenyama Trust Tower 17F
7-35 Kitashinagawa 4-chome, Shinagawa-ku
Tokyo 140-0001, Japan

Reporting Entity: Volkswagen Financial Services Japan Ltd.
Treasury Dept.
Gotenyama Trust Tower 17F
7-35 Kitashinagawa 4-chome, Shinagawa-ku
Tokyo 140-0001, Japan
Tel No.: +81(0)3-5792-7261
Fax No.: +81(0)3-3280-7365
E-mail: vwfsjp.abs@vwfs.com

**Trustor of the First Trust:
Servicer:** Volkswagen Financial Services Japan Ltd.

**Trustee of the First Trust:
Trustee of the Second Trust:** Deutsche Trust Company Limited Japan
Sanno Park Tower, 11-1,
Nagatacho 2-chome, Chiyoda-ku,
Tokyo, 100-6172, Japan
Trust Business Administration Department
Tel No.: +81(0)3-5156-5637
Fax No.: +81(0)3-5156-5658
E-mail: DB_Trust_Trust@list.db.com



Contents

| Page | Tables of Contents |
|------|---|
| 1 | Front Page |
| 2 | Contents |
| 3 | Deal Overview |
| 4 | Deal Overview: Counterparties I |
| 5 | Deal Overview: Counterparties II |
| 6 | Information regarding the TBI and ABL to the Second Trust |
| 7 | Pool Information |
| 8 | Available Distribution |
| 9 | Waterfall |
| 10 | Credit Enhancement |
| 11 | Cumulative Gross Loss Ratio & Performance Trigger |
| 12 | Cumulative Gross Loss Ratio & Performance Trigger (Chart) |
| 13 | Default & Delinquencies |
| 14 | Run Out Schedule (Previous) |
| 15 | Run Out Schedule |
| 16 | Expected Amortization to the Second Trust |
| 17 | Sub-Servicer |
| 18 | Brand |
| 19 | New and Used |
| 20 | Product Type |
| 21 | RV |
| 22 | Brand New and Used |
| 23 | Customer Type |
| 24 | Outstanding Discounted Principal Balance |
| 25 | Original Principal Amount |
| 26 | Interest Rate paid by the Obligor |
| 27 | Original Term |
| 28 | Remaining Term |
| 29 | Seasoning |
| 30 | Type of Car |
| 31 | Brand and Model |
| 32 | Geographic Dist. by Prefecture |
| 33 | Obligor Concentration |
| 34 | Contract Start Month |
| 35 | Contract End Month |
| 36 | Monthly payment |
| 37 | Bonus payment |
| 38 | Mortor Type |

Deal Overview

| | | | |
|-------------------------------------|------------|---|------------|
| Cut Off Date: | 2017/02/10 | | |
| Trust Commencement Date: | 2017/02/23 | Legal Maturity of the First Trust: | 2025/06/27 |
| Monthly Period: | 2018/10/11 | to | 2018/11/10 |
| Reporting Date: | 2018/11/16 | | |
| Reporting Frequency: | monthly | | |
| Period No.: | 21 | | |
| Remittance Date: | 2018/11/21 | | |
| Advance Payment Date: | 2018/11/21 | | |
| Cash Adjustment Date: | 2018/11/21 | | |
| Additional Entrustment Date: | 2018/11/26 | | |
| Trust Calculation Date: | 2018/11/26 | | |
| Trust Calculation Period: | 2018/10/26 | to | 2018/11/26 |
| First Trust Payment Date: | 2018/11/27 | | |
| Second Trust Payment Date: | 2018/11/28 | | |
| Interest Calculation Period: | 2018/10/30 | to | 2018/11/28 |
| Next Reporting Date: | 2018/12/17 | | |

Pool information at the Initial Cut off Date

| | Number of Contracts | Outstanding Discounted Principal Balance | Outstanding Nominal Balance |
|------------------|---------------------|--|-----------------------------|
| Outstanding Pool | 30,757 | 64,171,706,472 JPY | 67,028,993,300 JPY |

| Credit Type | Percentage of Loans | Outstanding Discounted Principal Balance | Percentage of Balance |
|-----------------------|---------------------|--|-----------------------|
| Balloon | 76.13 % | 55,443,642,000 JPY | 86.40 % |
| Equal Instalment Loan | 23.87 % | 8,728,064,472 JPY | 13.60 % |
| Total | 100.00 % | 64,171,706,472 JPY | 100.00 % |

| Type of Car | Percentage of Loans | Outstanding Discounted Principal Balance | Percentage of Balance |
|--------------|---------------------|--|-----------------------|
| New | 66.66 % | 49,506,381,305 JPY | 77.15 % |
| Used | 33.34 % | 14,665,325,167 JPY | 22.85 % |
| Total | 100.00 % | 64,171,706,472 JPY | 100.00 % |

Deal Overview: Counterparties I

Joint Lead Managers:

Shinsei Securities Co., Ltd.
 Nihonbashi Muromachi Nomura Building, 4-3,
 Nihonbashi-muromachi 2-chome,
 Chuo-ku,
 Tokyo 103-0022, Japan

BNP Paribas Securities (Japan) Limited
 GranTokyo North Tower, 9-1,
 Marunouchi 1-chome,
 Chiyoda-ku,
 Tokyo 100-6740, Japan

Trust Management Account Bank:

MUFG Bank, Ltd.
 4-2 Toranomom 1-chome,
 Minato-ku
 Tokyo 105-0001, Japan

| Rating | | | | | | | | |
|-----------|------------|---------|-----------|------------|---------|-----------|------------|---------|
| Moody's | | | Fitch | | | R&I | | |
| Long Term | Short Term | Outlook | Long Term | Short Term | Outlook | Long Term | Short Term | Outlook |
| n.a. | n.a. | n.a. | n.a. | n.a. | n.a. | n.a. | n.a. | n.a. |
| n.a. | n.a. | n.a. | n.a. | n.a. | n.a. | n.a. | n.a. | n.a. |
| A1 | P-1 | Stable | A | F1 | Stable | AA- | a-1+ | Stable |

Originator:

Trustor of the First Trust:

Servicer:

Volkswagen Financial Services Japan Ltd.
 Gotenyama Trust Tower 17F
 7-35 Kitashinagawa 4-chome, Shinagawa-ku
 Tokyo 140-0001, Japan

Trustee of the First Trust:

Trustee of the Second Trust:

Deutsche Trust Company Limited Japan
 Attn.: Driver Japan Six
 Trust Business Administration Department

ABL Lender to the First Trust:

Trustor of the Second Trust:

Shinsei Securities Co., Ltd.

Seller of the Trust Beneficial

Interest of the Second Trust

Shinsei Securities Co., Ltd.
 BNP Paribas Securities (Japan) Limited

Deal Overview: Counterparties II

Rating Agencies:

Moody's SF Japan K.K.

Attn.: Driver Japan six
 Structure Finance Group Monitoring Division
 5-1 Atago 2-chome, Minato-ku
 Tokyo 105-6220, Japan
 E-mail: monitor.ms fj@moodys.com

Fitch Ratings Japan Limited

Attn.: Driver Japan six
 Structured Finance
 Kojimachi Crystal City East Wing 3rd Floor,
 4-8 Kōjimachi, Chiyoda-ku,
 Tokyo 102-0083, Japan
 E-mail: tokyo.surveillance@fitchratings.com

Rating and Investment Information, Inc.

Attn.: Monitoring Group Department:
 Structured Finance Department
 TERRACE SQUARE, 3-22,
 Kanda Nishikicho, Chiyoda-ku,
 Tokyo 101-0054, Japan
 E-mail: sfmonitor@r-i.co.jp

Rating of VW

Volkswagen Financial Services AG

Volkswagen AG

| Rating | | | | | | | | |
|------------|-----------|---------|------------|-----------|---------|------------|-----------|---------|
| Moody's | | | Fitch | | | R&I | | |
| Short Term | Long Term | Outlook | Short Term | Long Term | Outlook | Short Term | Long Term | Outlook |
| P-2 | A3 | Stable | n.a. | n.a. | n.a. | n.a. | n.a. | n.a. |
| P-2 | A3 | Stable | F2 | BBB+ | Stable | n.a. | n.a. | n.a. |

Information regarding Trust Beneficial Interest of the Second Trust & Asset Backed Loan to the Second Trust

Rating Details

Rating at Issue Date

| | <u>TBI</u> | <u>ABL</u> |
|---------|------------|------------|
| Moody's | Aaa(sf) | Aaa(sf) |
| Fitch | AAAsf | AAAsf |
| R&I | AAA | AAA |

Current Rating

| | <u>TBI</u> | <u>ABL</u> |
|---------|------------|------------|
| Moody's | Aaa(sf) | Aaa(sf) |
| Fitch | AAAsf | AAAsf |
| R&I | AAA | AAA |

Information on TBI & ABL

| | <u>TBI</u> | <u>ABL</u> |
|------------------------------------|--------------------|--------------------|
| Initial Balance | 39,200,000,000 JPY | 20,800,000,000 JPY |
| Expected Maturity Date | 2021/06/28 | 2021/06/28 |
| Legal Maturity of the Second Trust | 2025/06/30 | 2025/06/30 |
| Payment Dates | 28th | 28th |
| Business Day Convention | Modified Following | Modified Following |
| Listing | None | — |

Information on Interest

| | <u>TBI</u> | <u>ABL</u> |
|----------------------|------------|------------|
| Fixed/ Floating | Fixed | Fixed |
| Current Coupon | 0.19% | 0.19% |
| Day Count Convention | 30/360 | 30/360 |

Selling Restriction

The holders of the Beneficial Interest and the ABL Lenders* are prohibited from dividing, assigning, pledging or creating any other security interest over any of the Beneficial Interest and the Asset Backed Loans without the prior written approval of the Trustee of the Second Trust.

(*)The holders of the Beneficial Interest and the ABL Lenders are limited to specified investors (*tokutei tousehika*) as defined under Paragraph 31 of Article 2 of the Financial Instruments and Exchange Act (Law no.25 of 1948 as amended).

Clean-Up Call

VWFS Japan as the Trustor of the First Trust has a right at its option to exercise a clean-up call to repurchase of all, but not part, of the outstanding Auto Loan Receivables from the Trustee of the First Trust on any Trust Calculation Date, the Discounted Principal Balance of all outstanding Auto Loan Receivables is expected to be less than ten percent (10%) of the Discounted Principal Balance of the Initial Auto Loan Receivables as of the Initial Cut-off Date after the distribution pursuant to Article 18.1 of the First Trust Agreement on the immediately following First Trust Payment Date.

Pool Information
Pool Balance on Initial Cut-Off Date

| Status | Number of Contracts | Outstanding Discounted Principal Balance |
|-----------------------|---------------------|--|
| Normal | 30,757 | 64,171,706,472 JPY |
| Cancellation | 0 | 0 JPY |
| Early Termination | 0 | 0 JPY |
| Defaulted Receivables | 0 | 0 JPY |
| Matured | 0 | 0 JPY |
| Refinance Option | 0 | 0 JPY |
| Repurchase | 0 | 0 JPY |
| Total | 30,757 | 64,171,706,472 JPY |

Pool Balance before entrustment of Additional Auto Loan Receivables

| Status | Number of Contracts on previous EoP | Outstanding Discounted Principal Balance on previous EoP | Number of Contracts "as Collections" during the relevant Monthly Period* | Outstanding Discounted Principal Balance "as Collections" during the relevant Monthly Period* | Number of Contracts EoP before entrustment of Additional Auto Loan Receivables | Outstanding Discounted Principal Balance EoP before entrustment of Additional Auto Loan Receivables |
|-----------------------|-------------------------------------|--|--|---|--|---|
| Normal | 27,464 | 46,399,055,728 JPY | 26,679 | 878,009,371 JPY | 26,679 | 44,488,368,821 JPY |
| Cancellation | 0 | 0 JPY | 0 | 0 JPY | 0 | 0 JPY |
| Early Termination | 0 | 0 JPY | 407 | 766,204,052 JPY | 0 | 0 JPY |
| Defaulted Receivables | 0 | 0 JPY | 8 | 9,779,974 JPY | 0 | 0 JPY |
| Matured | 0 | 0 JPY | 304 | 175,945,941 JPY | 0 | 0 JPY |
| Refinance Option | 0 | 0 JPY | 66 | 80,747,569 JPY | 0 | 0 JPY |
| Repurchase | 0 | 0 JPY | 0 | 0 JPY | 0 | 0 JPY |
| Total | 27,464 | 46,399,055,728 JPY | 27,464 | 1,910,686,907 JPY | 26,679 | 44,488,368,821 JPY |

Pool Balance after entrustment of Additional Auto Loan Receivables

| Status | Number of Contracts EoP before entrustment of Additional Auto Loan Receivables | Outstanding Discounted Principal Balance EoP before entrustment of Additional Auto Loan Receivables | Number of Contracts of Additional Auto Loan Receivables | Outstanding Discounted Principal Balance of Additional Auto Loan Receivables | Number of Contracts EoP after entrustment of Additional Auto Loan Receivables | Outstanding Discounted Principal Balance EoP after entrustment of Additional Auto Loan Receivables |
|-----------------------|--|---|---|--|---|--|
| Normal | 26,679 | 44,488,368,821 JPY | 0 | 0 JPY | 26,679 | 44,488,368,821 JPY |
| Cancellation | 0 | 0 JPY | 0 | 0 JPY | 0 | 0 JPY |
| Early Termination | 0 | 0 JPY | 0 | 0 JPY | 0 | 0 JPY |
| Defaulted Receivables | 0 | 0 JPY | 0 | 0 JPY | 0 | 0 JPY |
| Matured | 0 | 0 JPY | 0 | 0 JPY | 0 | 0 JPY |
| Refinance Option | 0 | 0 JPY | 0 | 0 JPY | 0 | 0 JPY |
| Repurchase | 0 | 0 JPY | 0 | 0 JPY | 0 | 0 JPY |
| Total | 26,679 | 44,488,368,821 JPY | 0 | 0 JPY | 26,679 | 44,488,368,821 JPY |

Limits on Eligibility Criteria

| Status Limits on Eligibility Criteria (v) (including Additional Entrustment) | Current Exposure in % | Limits in % of the aggregate Discounted Principal Balance of the Auto Loan Receivables outstanding | Status |
|--|-----------------------|--|--------|
| (i) on Used Purchased Vehicle | 22.36 % | 35 % | -* |
| (ii) on Non-VW Vehicles | 0.01 % | 5 % | -* |
| (iii) on Balloon Payment | 48.87 % | 50 % | -* |

(*) not applicable since the Revolving Period ended

Outstanding Balances

Monthly Period: from 2018/10/11 to 2018/11/10
Reporting Date: 2018/11/16
Trust Calculation Date: 2018/11/26

Outstanding Balances

| | Number of Contracts | Aggregate Amount of the Discounted Principal Balance | Aggregate Amount of the Nominal Balance |
|--|---------------------|--|---|
| Balance on the previous EoP | 27,464 | 46,399,055,728 JPY | 47,903,260,800 JPY |
| Balance after counting on the Collections during the relevant Monthly Period | 26,679 | 44,488,368,821 JPY | 45,891,238,200 JPY |
| Balance of Additional Auto Loan Receivables | 0 | 0 JPY | 0 JPY |
| Aggregate Amount of Auto Loan Receivables | 26,679 | 44,488,368,821 JPY | 45,891,238,200 JPY |

Collections

| | Number of Contracts | Aggregate Amount of the Discounted Principal Balance | Aggregate Amount of the Nominal Balance |
|--|---------------------|--|---|
| Collections: Amortization of current contracts | 26,679 | 878,009,371 JPY | 958,874,400 JPY |
| Collections: Cancellation | 0 | 0 JPY | 0 JPY |
| Collections: Early Termination | 407 | 766,204,052 JPY | 767,112,074 JPY |
| Collections: Defaulted Receivables | 8 | 9,779,974 JPY | 9,804,258 JPY |
| Collections: Matured | 304 | 175,945,941 JPY | 176,234,700 JPY |
| Collections: Refinance Option | 66 | 80,747,569 JPY | 80,890,000 JPY |
| Collections: Repurchase | 0 | 0 JPY | 0 JPY |
| Sum | 27,464 | 1,910,686,907 JPY | 1,992,915,432 JPY |

Available Distribution Amount

| | Number of Contracts | Aggregate Amount of the Nominal Balance |
|---|---------------------|---|
| (a) the Collections for the Monthly Period with respect to such Trust Calculation Date | 27,464 | 1,992,915,432 JPY |
| (b) drawings from the Cash Collateral Ledger in accordance with Article 18.3 of the First Trust Agreement | 0 | 0 JPY |
| (c) net investment earnings from Eligible Investments | 0 | 0 JPY |
| (d) net proceeds from the sale or disposal of the Trust Assets of the First Trust | 0 | 0 JPY |
| (e) any amount which is carried over from the immediately preceding Trust Calculation Date | 0 | 0 JPY |
| Sum | 27,464 | 1,992,915,432 JPY |

Waterfall

| There is no distinction between principal and interest, and all collections go through a single priority of payments | | | |
|--|------|-------------------|-------------------|
| | | Payment | Remaining Amount |
| Available Distribution Amount | plus | 1,992,915,432 JPY | 1,992,915,432 JPY |
| (a) an amount necessary for the payment of all taxes and public charges to be paid to the relevant public authority by the immediately following First Trust Payment Date. | less | 0 JPY | 1,992,915,432 JPY |
| (b) an amount necessary for the payment of all Fees for the Trustee of the First Trust to be paid to the Trustee of the First Trust by the immediately following First Trust Payment Date. | less | 417,590 JPY | 1,992,497,842 JPY |
| (c) an amount necessary for the payment of the Servicing Fee to be paid to the Servicer by the immediately following First Trust Payment Date. | less | 41,759,149 JPY | 1,950,738,693 JPY |
| (d) an amount necessary for the payment of the Trust Expenses of the First Trust as provided in Article 23.1 (including the Rating Fees, Costs of the Second Trust and those fees not otherwise covered by (b) or (c) above) to be paid to the relevant party by the immediately following First Trust Payment Date (including any amounts advanced by the Trustee of the First Trust pursuant to Article 23.3) | less | 433,034 JPY | 1,950,305,659 JPY |
| (e) an amount necessary for the payment of overdue and unpaid interest on the Asset Backed Loans to the First Trust (if any) to be paid to the Trustee of the Second Trust by the immediately following First Trust Payment Date. | less | 0 JPY | 1,950,305,659 JPY |
| (f) an amount necessary for the payment to the Trustee of the Second Trust of interest on the Asset Backed Loan to the First Trust accruing during the relevant Interest Calculation Period | less | 6,501,667 JPY | 1,943,803,992 JPY |
| (g) an amount necessary to top up the balance thereof until it is equal to the Cash Collateral Ledger Target Balance | less | 0 JPY | 1,943,803,992 JPY |
| (h) (i) prior to the expiration of the Revolving Period: an amount necessary for the redemption of any Additional Senior Beneficial Interest; | less | 1,690,957,913 JPY | 252,846,079 JPY |
| (ii) following the expiration of the Revolving Period and prior to the occurrence of an Early Amortization Event, an amount necessary for the payment to the Trustee of the Second Trust of the Asset Backed Loan Principal Payment Amount for the relevant First Trust Payment Date. | | | |
| (iii) following the occurrence of the Early Amortization Event, an amount necessary for the payment to the Trustee of the Second Trust of the remaining principal balance of the Asset Backed Loan to the First Trust. | | | |
| (i) an amount necessary for the payment to the Trustee of the First Trust of any Indemnified Amounts which are not compensated by the Trustor of the First Trust | less | 0 JPY | 252,846,079 JPY |
| (j) an amount necessary for the payment to the Subordinated Beneficiary of the Subordinated Beneficial Principal Payment Amount for the relevant First Trust Payment Date. | less | 219,728,994 JPY | 33,117,085 JPY |
| (k) (i) prior to the expiration of the Revolving Period, then (x) if a transfer is made under (j) above, such remaining amount will be transferred to the Expenses Distribution Ledger for payment to the Subordinated Beneficiary as a payment of earnings on the Subordinated Beneficial Interest, and such payment shall be made on the First Trust Payment Date immediately following such Trust Calculation Date or (y) if no transfer is made under (j) above, such remaining amount will be carried forward to the next Trust Calculation Date. | less | 33,117,085 JPY | 0 JPY |
| (ii) following the expiration of the Revolving Period and prior to the occurrence of an Early Amortization Event, then such remaining amount will be transferred to the Expenses Distribution Ledger for payment to the Subordinated Beneficiary as a payment of earnings on the Subordinated Beneficial Interest, and such payment shall be made on the First Trust Payment Date immediately following such Trust Calculation Date. | | | |
| (iii) following the occurrence of an Early Amortization Event, the remaining amount in the Trust Collection Ledger will be carried forward to the next Trust Calculation Date. | | | |

Credit Enhancement

Subordinated Principal Balance as of the relevant First Trust Payment Date

| | Percentage of Aggregate Discounted Principal Balance | Value |
|---|--|--------------------|
| (i) the aggregate amount of the Discounted Principal Balance of all Auto Loan Receivables outstanding | | 44,488,368,821 JPY |
| (ii) Asset Backed Loan Principal Balance on the relevant First Trust Payment Date | | 39,372,206,406 JPY |
| Overcollateralization (= (i) - (ii)) | 11.50 % | 5,116,162,415 JPY |
| Trust Collection Ledger which is carried over from the immediately preceding Trust Calculation Date | 0.00 % | 0 JPY |
| The amount in the Cash Collateral Ledger | 0.78 % | 345,000,000 JPY |
| Subordinated Principal Balance | 12.28 % | 5,461,162,415 JPY |

Trust Management Account (TMA)

| | in JPY | +/- | in JPY (previous) |
|--|------------------------|--------------|------------------------|
| Initial Balance on Cash Entrustment Date | 345,000,000 JPY | | |
| Outstanding Balance on First Trust Payment Date | 345,000,000 JPY | 0 JPY | 345,000,000 JPY |
| (a) Expenses Distribution Ledger | 0 JPY | 0 JPY | 0 JPY |
| (b) Trust Collection Ledger | 0 JPY | 0 JPY | 0 JPY |
| (c) Cash Collateral Ledger | 345,000,000 JPY | 0 JPY | 345,000,000 JPY |
| Cash Collateral Ledger Target Balance | 345,000,000 JPY | | |

Calculation of Credit Enhancement

Driver Japan six's Credit Enhancement consists of the items listed above in the Subordinated Principal Balance as of the relevant date of determination (immediately following the First Trust Payment Date). The result provides an absolute value, which will be applied to the (amortized) Aggregate Discounted Principal Balance as of the end of the relevant date.

The transaction has a Revolving Period of 12 months until February 2018.

Asset Backed Loan Overcollateralization Percentage is (i) prior to the expiration of the Revolving Period, 8.5%, and (ii) following the expiration of the Revolving Period, 11.5%; provided, in each case no Credit Enhancement Increase Condition shall be in effect. After a Level 1 Credit Enhancement Increase Condition in effect, 17% and after a Level 2 Credit Enhancement Increase Condition is in effect, 100%.

Cumulative Gross Loss & Cumulative Repurchased Receivables

Cumulative Defaulted Receivables

| | Number of Contracts | Write Offs |
|-----------------------|---------------------|------------------------|
| Beginning of Period | 89 | 187,402,680 JPY |
| Defaulted Receivables | 8 | 9,779,974 JPY |
| End of Period | 97 | 197,182,654 JPY |

Cumulative Gross Loss Ratio

The sum of the Discounted Principal Balance of all Auto Loan Receivables that have become Defaulted Receivables from the Initial Cut-off Date through to the end of Monthly Period immediately preceding the relevant Trust Calculation Date

197,182,654 JPY

0.22 %

The sum of (i) the aggregate Discounted Principal Balance of the Initial Auto Loan Receivables as of the Initial Cut-off Date and (ii) the aggregate Discounted Principal Balance as of the relevant Trust Calculation Date of all Additional Auto Loan Receivables (if any) entrusted on the Additional Entrustment Dates which fall six months prior to the relevant Trust Calculation Date.

90,684,064,608 JPY

Performance Triggers

Asset Backed Loan Overcollateralization Percentage was implemented to assure on a monthly basis that no cash is paid to lower steps in the waterfall unless there is sufficient Overcollateralization to support the transaction.

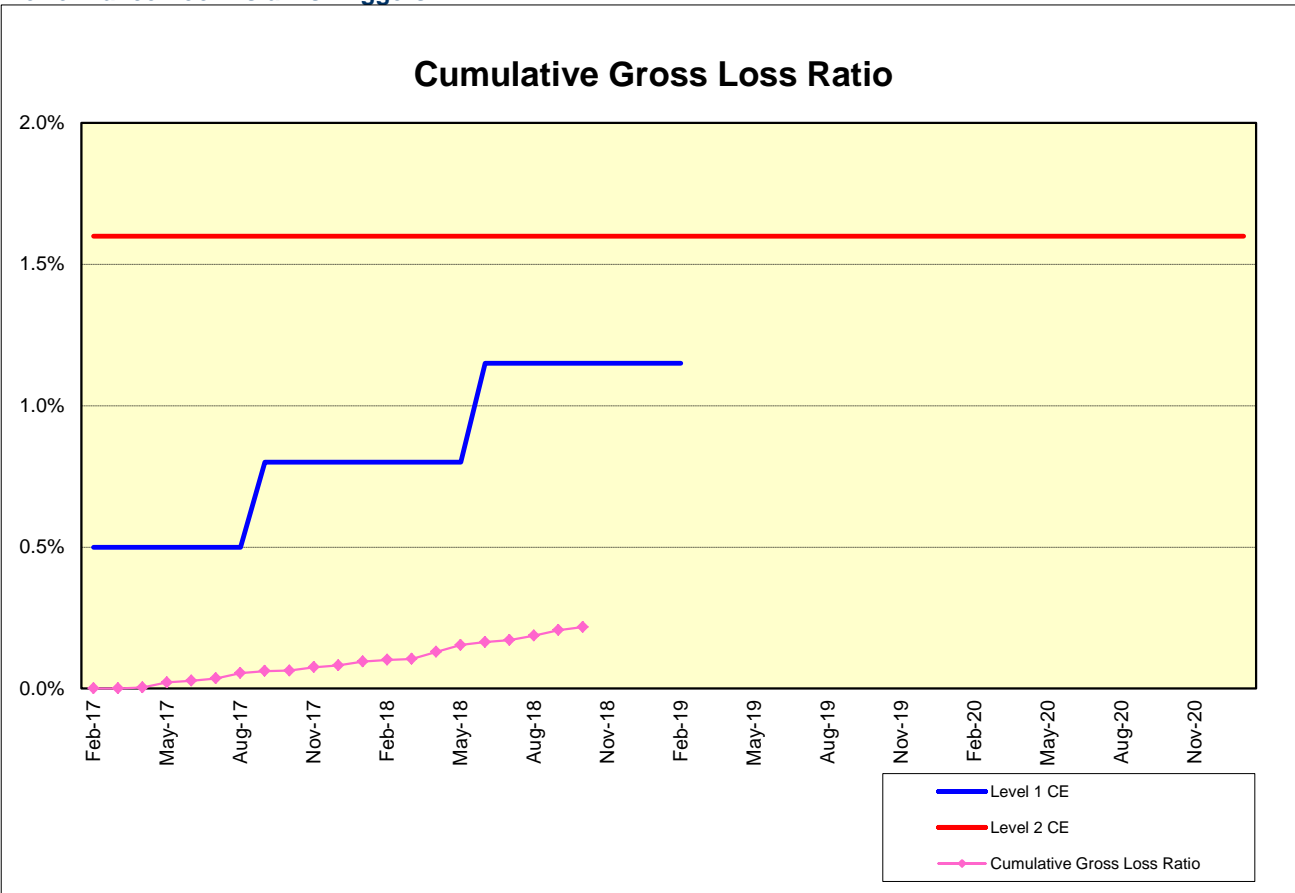
The performance trigger in form of a Credit Enhancement Increase Condition will be activated when the Cumulative Gross Loss Ratio exceeds the defined limits. In this case the Overcollateralization will be increased accordingly.

| Levels | Credit Enhancement increase condition | Credit Enhancement increase condition in place? |
|---------------|--|---|
| Level 1 (i) | Cumulative Gross Loss Ratio exceeds 0.5% for any First Trust Payment Date on or prior to August 2017 | no |
| Level 1 (ii) | Cumulative Gross Loss Ratio exceeds 0.8% for any First Trust Payment Date from September 2017 to May 2018 | no |
| Level 1 (iii) | Cumulative Gross Loss Ratio exceeds 1.15% for any First Trust Payment Date from June 2018 to February 2019 | no |
| Level 2 | Cumulative Gross Loss Ratio exceeds 1.6% for any First Trust Payment Date | no |

| | Asset Backed Loan Overcollateralization Percentage |
|--|--|
| Prior to the expiration of the Revolving Period (No Credit Enhancement Increase Condition is in effect) | 8.50 % |
| Following the expiration of Revolving Period (No Credit Enhancement Increase Condition is in effect) | 11.50 % |
| After a Level 1 Credit Enhancement Increase Condition is in effect | 17.00 % |
| After a Level 2 Credit Enhancement Increase Condition is in effect | 100.00 % |
| Current Asset Backed Loan Overcollateralization Percentage | 11.50 % |

Cumulative Gross Loss & Cumulative Repurchased Receivables

Performance Pool vis-a-vis Triggers



Cumulative Repurchased Receivables

| | Number of Contracts | Repurchase Price |
|-------------------------|---------------------|------------------|
| Beginning of Period | 0 | 0 JPY |
| Repurchased Receivables | 0 | 0 JPY |
| End of Period | 0 | 0 JPY |

Defaulted and Delinquent Contracts

Information of Delinquencies and Defaults

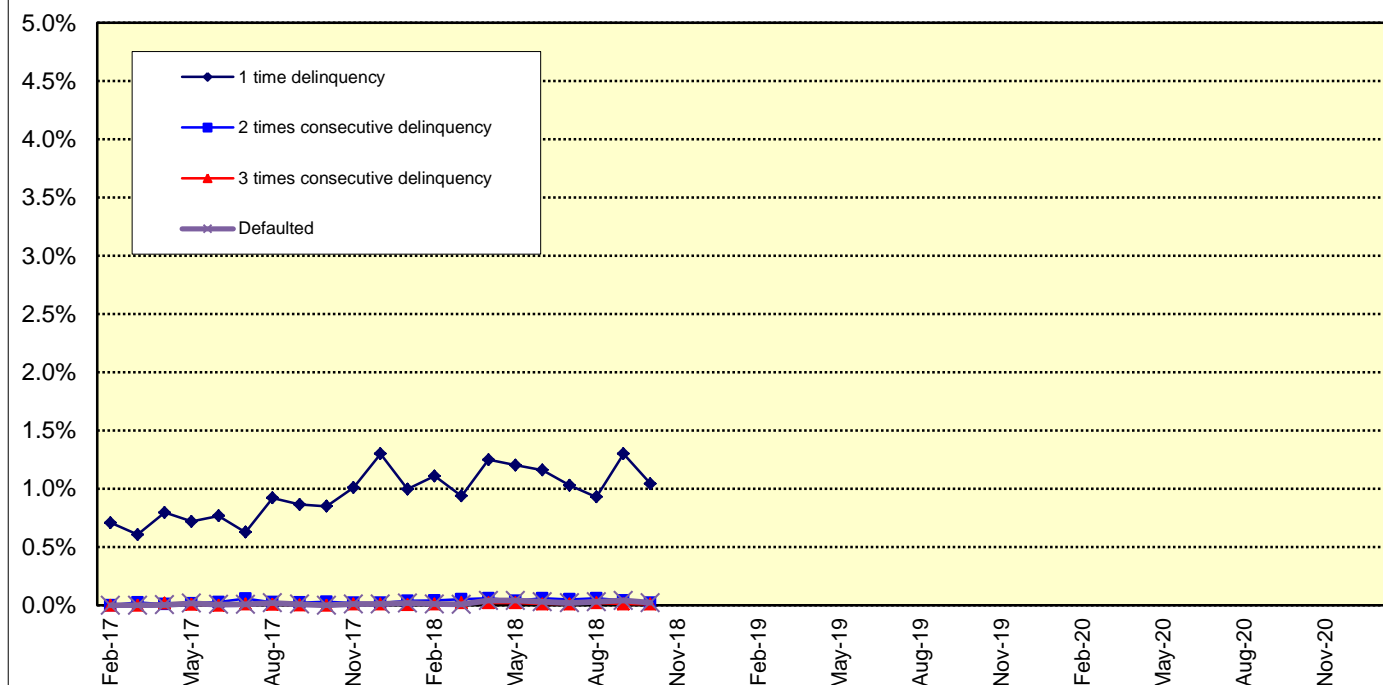
| Current Reporting Period | Number of Contracts | Percentage of Contracts (*) | Outstanding Discounted Principal Balance | Percentage of Principal Balance (*) | Outstanding Nominal Balance | Percentage of Nominal Balance (*) |
|--------------------------|---------------------|-----------------------------|--|-------------------------------------|-----------------------------|-----------------------------------|
| Delinquent | 276 | 1.00 % | 476,785,518 JPY | 1.03 % | 494,532,700 JPY | 1.03 % |
| Default | 8 | 0.03 % | 9,779,974 JPY | 0.02 % | 9,804,258 JPY | 0.02 % |

(*) Based on the previous EoP

Delinquency Profile (Information Purpose Only)

| Days in Arrears | Number of Contracts | Percentage of Contracts | Outstanding Discounted Principal Balance | Percentage of Principal Balance | Outstanding Nominal Balance | Percentage of Nominal Balance |
|-----------------|---------------------|-------------------------|--|---------------------------------|-----------------------------|-------------------------------|
| 1 | 268 | 1.00 % | 464,224,278 JPY | 1.04 % | 481,454,600 JPY | 1.05 % |
| 2 | 6 | 0.02 % | 8,595,107 JPY | 0.02 % | 8,908,700 JPY | 0.02 % |
| 3 | 2 | 0.01 % | 3,966,133 JPY | 0.01 % | 4,169,400 JPY | 0.01 % |
| Total | 276 | 1.03 % | 476,785,518 JPY | 1.07 % | 494,532,700 JPY | 1.08 % |

Delinquent / Defaulted (Gross Loss) Ratio



Run Out Schedule

ROS on the previous EoP on 2018/10/10

| Next Payment Month | Number of Contracts | ABS Outstanding Principal | ABS Outstanding Interest | Outstanding Installment | ABS Remaining Principal | ABS Remaining Interest | ABS Remaining Installment |
|--------------------|---------------------|---------------------------|--------------------------|-------------------------|-------------------------|------------------------|---------------------------|
| 09.2018 | 27,464 | 46,399,055,728 JPY | 1,504,205,072 JPY | 47,903,260,800 JPY | 0 JPY | 0 JPY | 0 JPY |
| 10.2018 | 27,464 | 45,248,211,019 JPY | 1,421,545,781 JPY | 46,669,756,800 JPY | 1,150,844,709 JPY | 82,659,291 JPY | 1,233,504,000 JPY |
| 11.2018 | 27,093 | 44,034,895,738 JPY | 1,340,981,262 JPY | 45,375,877,000 JPY | 1,213,315,281 JPY | 80,564,519 JPY | 1,293,879,800 JPY |
| 12.2018 | 26,618 | 41,613,195,591 JPY | 1,262,584,709 JPY | 42,875,780,300 JPY | 2,421,700,147 JPY | 78,396,553 JPY | 2,500,096,700 JPY |
| 01.2019 | 25,860 | 40,078,855,329 JPY | 1,188,543,471 JPY | 41,267,398,800 JPY | 1,534,340,262 JPY | 74,041,238 JPY | 1,608,381,500 JPY |
| 02.2019 | 25,386 | 38,619,512,012 JPY | 1,117,254,988 JPY | 39,736,767,000 JPY | 1,459,343,317 JPY | 71,288,483 JPY | 1,530,631,800 JPY |
| 03.2019 | 24,717 | 36,715,651,514 JPY | 1,048,526,586 JPY | 37,764,178,100 JPY | 1,903,860,498 JPY | 68,728,402 JPY | 1,972,588,900 JPY |
| 04.2019 | 23,625 | 35,359,175,299 JPY | 983,073,001 JPY | 36,342,248,300 JPY | 1,356,476,215 JPY | 65,453,585 JPY | 1,421,929,800 JPY |
| 05.2019 | 23,130 | 33,891,124,129 JPY | 919,929,771 JPY | 34,811,053,900 JPY | 1,468,051,170 JPY | 63,143,230 JPY | 1,531,194,400 JPY |
| 06.2019 | 22,477 | 31,760,603,415 JPY | 859,265,285 JPY | 32,619,868,700 JPY | 2,130,520,714 JPY | 60,664,486 JPY | 2,191,185,200 JPY |
| 07.2019 | 21,610 | 29,887,274,219 JPY | 802,164,881 JPY | 30,689,439,100 JPY | 1,873,329,196 JPY | 57,100,404 JPY | 1,930,429,600 JPY |
| 08.2019 | 20,968 | 28,369,172,331 JPY | 748,255,669 JPY | 29,117,428,000 JPY | 1,518,101,888 JPY | 53,909,212 JPY | 1,572,011,100 JPY |
| 09.2019 | 20,290 | 26,481,434,894 JPY | 696,811,906 JPY | 27,178,246,800 JPY | 1,887,737,437 JPY | 51,443,763 JPY | 1,939,181,200 JPY |
| 10.2019 | 19,264 | 25,096,194,395 JPY | 648,271,405 JPY | 25,744,465,800 JPY | 1,385,240,499 JPY | 48,540,501 JPY | 1,433,781,000 JPY |
| 11.2019 | 18,580 | 23,387,032,371 JPY | 601,985,029 JPY | 23,989,017,400 JPY | 1,709,162,024 JPY | 46,286,376 JPY | 1,755,448,400 JPY |
| 12.2019 | 17,687 | 21,766,149,862 JPY | 558,293,838 JPY | 22,324,443,700 JPY | 1,620,882,509 JPY | 43,691,191 JPY | 1,664,573,700 JPY |
| 01.2020 | 17,186 | 20,682,493,871 JPY | 517,467,929 JPY | 21,199,961,800 JPY | 1,083,655,991 JPY | 40,825,909 JPY | 1,124,481,900 JPY |
| 02.2020 | 16,781 | 19,657,894,009 JPY | 478,570,491 JPY | 20,136,464,500 JPY | 1,024,599,862 JPY | 38,897,438 JPY | 1,063,497,300 JPY |
| 03.2020 | 16,215 | 18,436,049,461 JPY | 441,454,939 JPY | 18,877,504,400 JPY | 1,221,844,548 JPY | 37,115,552 JPY | 1,258,960,100 JPY |
| 04.2020 | 15,447 | 17,676,993,062 JPY | 406,348,438 JPY | 18,083,341,500 JPY | 759,056,399 JPY | 35,106,501 JPY | 794,162,900 JPY |
| 05.2020 | 15,171 | 16,873,983,488 JPY | 372,620,712 JPY | 17,246,604,200 JPY | 803,009,574 JPY | 33,727,726 JPY | 836,737,300 JPY |
| 06.2020 | 14,780 | 15,819,776,527 JPY | 340,326,773 JPY | 16,160,103,300 JPY | 1,054,206,961 JPY | 32,293,939 JPY | 1,086,500,900 JPY |
| 07.2020 | 14,348 | 14,875,972,999 JPY | 309,970,101 JPY | 15,185,943,100 JPY | 943,803,528 JPY | 30,356,672 JPY | 974,160,200 JPY |
| 08.2020 | 14,048 | 14,094,950,752 JPY | 281,427,048 JPY | 14,376,377,800 JPY | 781,022,247 JPY | 28,543,053 JPY | 809,565,300 JPY |
| 09.2020 | 13,664 | 13,378,999,833 JPY | 254,329,067 JPY | 13,633,328,900 JPY | 715,950,919 JPY | 27,097,981 JPY | 743,048,900 JPY |
| 10.2020 | 13,225 | 12,816,235,425 JPY | 228,581,675 JPY | 13,044,817,100 JPY | 562,764,408 JPY | 25,747,392 JPY | 588,511,800 JPY |
| 11.2020 | 12,964 | 12,251,076,165 JPY | 203,950,835 JPY | 12,455,027,000 JPY | 565,159,260 JPY | 24,630,840 JPY | 589,790,100 JPY |
| 12.2020 | 12,659 | 11,271,144,441 JPY | 180,444,959 JPY | 11,451,589,900 JPY | 979,931,724 JPY | 23,505,876 JPY | 1,003,437,600 JPY |
| 01.2021 | 12,264 | 10,500,674,116 JPY | 158,896,584 JPY | 10,659,570,700 JPY | 770,470,325 JPY | 21,548,375 JPY | 792,018,700 JPY |
| 02.2021 | 11,762 | 9,681,710,750 JPY | 138,813,350 JPY | 9,820,524,100 JPY | 818,963,366 JPY | 20,083,234 JPY | 839,046,600 JPY |
| 03.2021 | 11,007 | 8,724,799,398 JPY | 120,276,702 JPY | 8,845,076,100 JPY | 956,911,352 JPY | 18,536,648 JPY | 975,448,000 JPY |
| 04.2021 | 9,926 | 8,150,425,988 JPY | 103,512,912 JPY | 8,253,938,900 JPY | 574,373,410 JPY | 16,763,790 JPY | 591,137,200 JPY |
| 05.2021 | 9,402 | 7,506,482,982 JPY | 87,894,518 JPY | 7,594,377,500 JPY | 643,943,006 JPY | 15,618,394 JPY | 659,561,400 JPY |
| 06.2021 | 8,686 | 6,710,099,361 JPY | 73,534,739 JPY | 6,783,634,100 JPY | 796,383,621 JPY | 14,359,779 JPY | 810,743,400 JPY |
| 07.2021 | 7,923 | 5,832,277,177 JPY | 60,779,723 JPY | 5,893,056,900 JPY | 877,822,184 JPY | 12,755,016 JPY | 890,577,200 JPY |
| 08.2021 | 7,148 | 5,053,142,416 JPY | 49,712,584 JPY | 5,102,855,000 JPY | 779,134,761 JPY | 11,067,139 JPY | 790,201,900 JPY |
| 09.2021 | 6,259 | 4,062,150,489 JPY | 40,072,111 JPY | 4,102,222,600 JPY | 990,991,927 JPY | 9,640,473 JPY | 1,000,632,400 JPY |
| 10.2021 | 5,060 | 3,417,677,309 JPY | 32,291,891 JPY | 3,449,969,200 JPY | 644,473,180 JPY | 7,780,220 JPY | 652,253,400 JPY |
| 11.2021 | 4,312 | 2,613,159,009 JPY | 25,707,991 JPY | 2,638,867,000 JPY | 804,518,300 JPY | 6,583,900 JPY | 811,102,200 JPY |
| 12.2021 | 3,317 | 2,170,529,426 JPY | 20,579,174 JPY | 2,191,108,600 JPY | 442,629,583 JPY | 5,128,817 JPY | 447,758,400 JPY |
| 01.2022 | 2,965 | 1,853,211,142 JPY | 16,306,258 JPY | 1,869,517,400 JPY | 317,318,284 JPY | 4,272,916 JPY | 321,591,200 JPY |
| 02.2022 | 2,658 | 1,529,922,434 JPY | 12,654,766 JPY | 1,542,577,200 JPY | 323,288,708 JPY | 3,651,492 JPY | 326,940,200 JPY |
| 03.2022 | 2,290 | 1,102,731,855 JPY | 9,628,045 JPY | 1,112,359,900 JPY | 427,190,579 JPY | 3,026,721 JPY | 430,217,300 JPY |
| 04.2022 | 1,715 | 909,404,144 JPY | 7,372,956 JPY | 916,777,100 JPY | 193,327,711 JPY | 2,255,089 JPY | 195,582,800 JPY |
| 05.2022 | 1,462 | 709,680,150 JPY | 5,491,150 JPY | 715,171,300 JPY | 199,723,994 JPY | 1,881,806 JPY | 201,605,800 JPY |
| 06.2022 | 1,174 | 501,005,375 JPY | 3,980,725 JPY | 504,986,100 JPY | 208,674,775 JPY | 1,510,425 JPY | 210,185,200 JPY |
| 07.2022 | 879 | 361,769,237 JPY | 2,872,063 JPY | 364,641,300 JPY | 139,236,138 JPY | 1,108,662 JPY | 140,344,800 JPY |
| 08.2022 | 704 | 262,975,940 JPY | 2,051,460 JPY | 265,027,400 JPY | 98,793,297 JPY | 820,603 JPY | 99,613,900 JPY |
| 09.2022 | 511 | 150,688,490 JPY | 1,433,910 JPY | 152,122,400 JPY | 112,287,450 JPY | 617,550 JPY | 112,905,000 JPY |
| 10.2022 | 327 | 85,135,923 JPY | 1,051,277 JPY | 86,187,200 JPY | 65,552,567 JPY | 382,633 JPY | 65,935,200 JPY |
| 11.2022 | 230 | 52,833,586 JPY | 821,914 JPY | 53,655,500 JPY | 32,302,337 JPY | 229,363 JPY | 32,531,700 JPY |
| 12.2022 | 174 | 40,770,967 JPY | 664,633 JPY | 41,435,600 JPY | 12,062,619 JPY | 157,281 JPY | 12,219,900 JPY |
| 01.2023 | 148 | 32,927,880 JPY | 542,520 JPY | 33,470,400 JPY | 7,843,087 JPY | 122,113 JPY | 7,965,200 JPY |
| 02.2023 | 134 | 27,628,703 JPY | 443,197 JPY | 28,071,900 JPY | 5,299,177 JPY | 99,323 JPY | 5,398,500 JPY |
| 03.2023 | 115 | 23,092,972 JPY | 359,328 JPY | 23,452,300 JPY | 4,535,731 JPY | 83,869 JPY | 4,619,600 JPY |
| 04.2023 | 93 | 19,322,658 JPY | 288,742 JPY | 19,611,400 JPY | 3,770,314 JPY | 70,586 JPY | 3,840,900 JPY |
| 05.2023 | 83 | 15,904,777 JPY | 229,423 JPY | 16,134,200 JPY | 3,417,881 JPY | 59,319 JPY | 3,477,200 JPY |
| 06.2023 | 64 | 12,573,969 JPY | 180,331 JPY | 12,754,300 JPY | 3,330,808 JPY | 49,092 JPY | 3,379,900 JPY |
| 07.2023 | 49 | 9,377,445 JPY | 140,955 JPY | 9,518,400 JPY | 3,196,524 JPY | 39,376 JPY | 3,235,900 JPY |
| 08.2023 | 43 | 7,133,596 JPY | 111,404 JPY | 7,245,000 JPY | 2,243,849 JPY | 29,551 JPY | 2,273,400 JPY |
| 09.2023 | 36 | 5,654,553 JPY | 88,847 JPY | 5,743,400 JPY | 1,479,043 JPY | 22,557 JPY | 1,501,600 JPY |
| 10.2023 | 23 | 4,697,022 JPY | 70,878 JPY | 4,767,900 JPY | 957,531 JPY | 17,969 JPY | 975,500 JPY |
| 11.2023 | 13 | 4,166,883 JPY | 55,917 JPY | 4,222,800 JPY | 530,139 JPY | 14,961 JPY | 545,100 JPY |
| 12.2023 | 12 | 2,868,255 JPY | 42,645 JPY | 2,910,900 JPY | 1,298,628 JPY | 13,272 JPY | 1,311,900 JPY |
| 01.2024 | 10 | 2,314,191 JPY | 33,509 JPY | 2,347,700 JPY | 554,064 JPY | 9,136 JPY | 563,200 JPY |
| 02.2024 | 9 | 1,952,261 JPY | 26,139 JPY | 1,978,400 JPY | 361,930 JPY | 7,370 JPY | 369,300 JPY |
| 03.2024 | 7 | 1,670,980 JPY | 19,920 JPY | 1,690,900 JPY | 281,281 JPY | 6,219 JPY | 287,500 JPY |
| 04.2024 | 6 | 1,442,602 JPY | 14,598 JPY | 1,457,200 JPY | 228,378 JPY | 5,322 JPY | 233,700 JPY |
| 05.2024 | 5 | 1,264,097 JPY | 10,003 JPY | 1,274,100 JPY | 178,505 JPY | 4,595 JPY | 183,100 JPY |
| 06.2024 | 5 | 1,085,024 JPY | 5,976 JPY | 1,091,000 JPY | 179,073 JPY | 4,027 JPY | 183,100 JPY |
| 07.2024 | 5 | 415,380 JPY | 2,520 JPY | 417,900 JPY | 669,644 JPY | 3,456 JPY | 673,100 JPY |
| 08.2024 | 4 | 263,803 JPY | 1,197 JPY | 265,000 JPY | 151,577 JPY | 1,323 JPY | 152,900 JPY |
| 09.2024 | 4 | 111,744 JPY | 356 JPY | 112,100 JPY | 152,059 JPY | 841 JPY | 152,900 JPY |
| 10.2024 | 3 | 0 JPY | 0 JPY | 0 JPY | 111,744 JPY | 356 JPY | 112,100 JPY |

Run Out Schedule

ROS on the relevant EoP on 2018/11/10

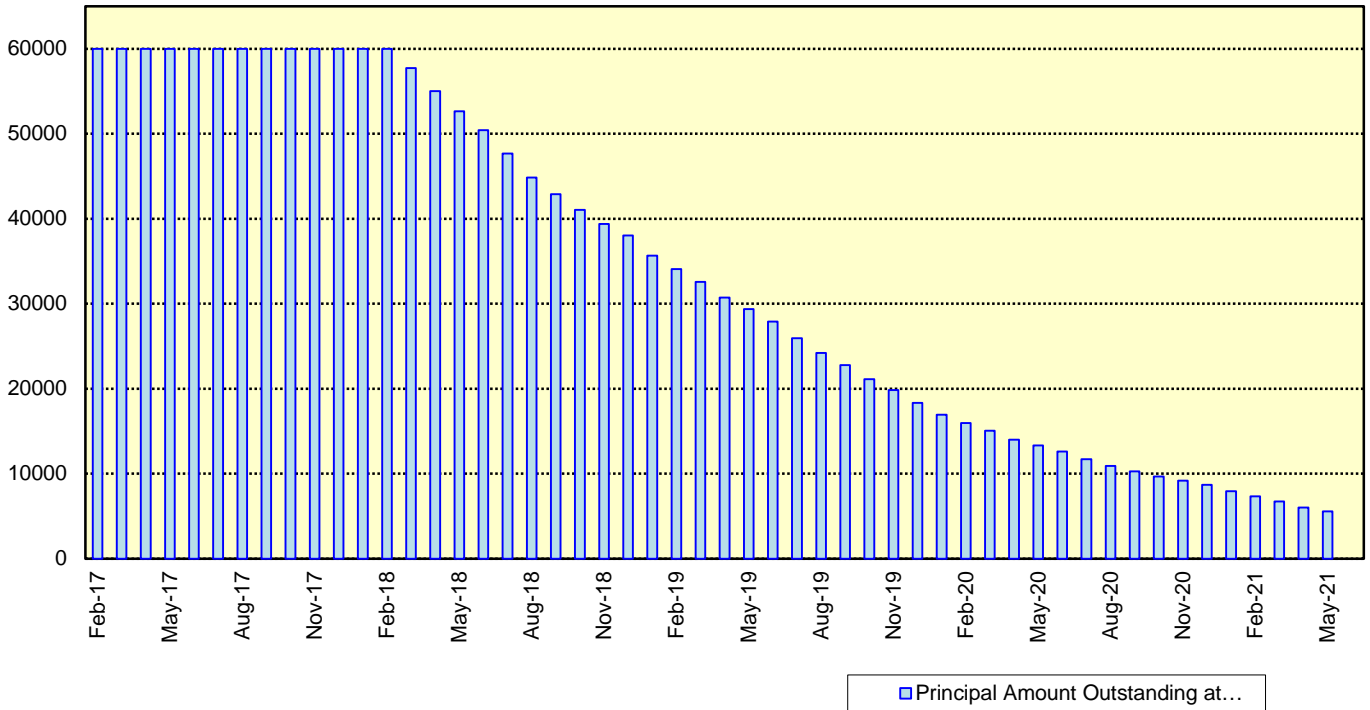
| Next Payment Month | Number of Contracts | ABS Outstanding Principal | ABS Outstanding Interest | Outstanding Installment | ABS Remaining Principal | ABS Remaining Interest | ABS Remaining Installment |
|--------------------|---------------------|---------------------------|--------------------------|-------------------------|-------------------------|------------------------|---------------------------|
| 10.2018 | 26,679 | 44,488,368,821 JPY | 1,402,869,379 JPY | 45,891,238,200 JPY | 0 JPY | 0 JPY | 0 JPY |
| 11.2018 | 26,679 | 43,324,515,653 JPY | 1,323,637,947 JPY | 44,648,153,600 JPY | 1,163,853,168 JPY | 79,231,432 JPY | 1,243,084,600 JPY |
| 12.2018 | 26,230 | 40,977,398,916 JPY | 1,246,490,584 JPY | 42,223,889,500 JPY | 2,347,116,737 JPY | 77,147,363 JPY | 2,424,264,100 JPY |
| 01.2019 | 25,505 | 39,475,637,356 JPY | 1,173,583,844 JPY | 40,649,221,200 JPY | 1,501,761,560 JPY | 72,906,740 JPY | 1,574,668,300 JPY |
| 02.2019 | 25,039 | 38,054,607,474 JPY | 1,103,374,026 JPY | 39,157,981,500 JPY | 1,421,029,882 JPY | 70,209,818 JPY | 1,491,239,700 JPY |
| 03.2019 | 24,389 | 36,209,010,253 JPY | 1,035,662,247 JPY | 37,244,672,500 JPY | 1,845,597,221 JPY | 67,711,779 JPY | 1,913,309,000 JPY |
| 04.2019 | 23,330 | 34,872,977,425 JPY | 971,132,075 JPY | 35,844,109,500 JPY | 1,336,032,828 JPY | 64,530,172 JPY | 1,400,563,000 JPY |
| 05.2019 | 22,843 | 33,429,885,601 JPY | 908,877,499 JPY | 34,338,763,100 JPY | 1,443,091,824 JPY | 62,254,576 JPY | 1,505,346,400 JPY |
| 06.2019 | 22,199 | 31,329,769,284 JPY | 849,061,916 JPY | 32,178,831,200 JPY | 2,100,116,317 JPY | 59,815,583 JPY | 2,159,931,900 JPY |
| 07.2019 | 21,344 | 29,496,004,343 JPY | 792,757,157 JPY | 30,288,761,500 JPY | 1,833,764,941 JPY | 56,304,759 JPY | 1,890,069,700 JPY |
| 08.2019 | 20,712 | 27,998,303,489 JPY | 739,572,311 JPY | 28,737,875,800 JPY | 1,497,700,854 JPY | 53,184,846 JPY | 1,550,885,700 JPY |
| 09.2019 | 20,040 | 26,143,779,148 JPY | 688,819,352 JPY | 26,832,598,500 JPY | 1,854,524,341 JPY | 50,752,959 JPY | 1,905,277,300 JPY |
| 10.2019 | 19,035 | 24,792,953,272 JPY | 640,914,228 JPY | 25,433,867,500 JPY | 1,350,825,876 JPY | 47,905,124 JPY | 1,398,731,000 JPY |
| 11.2019 | 18,370 | 23,102,411,160 JPY | 595,213,240 JPY | 23,697,624,400 JPY | 1,690,542,112 JPY | 45,700,988 JPY | 1,736,243,100 JPY |
| 12.2019 | 17,482 | 21,505,398,337 JPY | 552,079,063 JPY | 22,057,477,400 JPY | 1,597,012,823 JPY | 43,134,177 JPY | 1,640,147,000 JPY |
| 01.2020 | 16,991 | 20,437,389,551 JPY | 511,765,749 JPY | 20,949,155,300 JPY | 1,068,008,786 JPY | 40,313,314 JPY | 1,108,322,100 JPY |
| 02.2020 | 16,591 | 19,423,550,631 JPY | 473,351,369 JPY | 19,896,902,000 JPY | 1,013,838,920 JPY | 38,414,380 JPY | 1,052,253,300 JPY |
| 03.2020 | 16,031 | 18,218,298,455 JPY | 436,696,545 JPY | 18,654,995,000 JPY | 1,205,252,176 JPY | 36,654,824 JPY | 1,241,907,000 JPY |
| 04.2020 | 15,270 | 17,471,156,279 JPY | 402,024,321 JPY | 17,873,180,600 JPY | 747,142,224 JPY | 34,672,224 JPY | 786,814,400 JPY |
| 05.2020 | 15,000 | 16,676,279,611 JPY | 368,705,589 JPY | 17,044,985,200 JPY | 794,876,668 JPY | 33,318,732 JPY | 828,195,400 JPY |
| 06.2020 | 14,611 | 15,636,118,152 JPY | 336,804,848 JPY | 15,972,923,000 JPY | 1,040,161,459 JPY | 31,900,741 JPY | 1,072,062,200 JPY |
| 07.2020 | 14,185 | 14,703,787,074 JPY | 306,816,326 JPY | 15,010,603,400 JPY | 932,331,078 JPY | 29,988,522 JPY | 962,319,600 JPY |
| 08.2020 | 13,888 | 13,935,009,836 JPY | 278,617,964 JPY | 14,213,627,800 JPY | 768,777,238 JPY | 28,198,362 JPY | 796,975,600 JPY |
| 09.2020 | 13,509 | 13,232,428,622 JPY | 251,840,678 JPY | 13,484,269,300 JPY | 702,581,214 JPY | 26,777,286 JPY | 729,358,500 JPY |
| 10.2020 | 13,079 | 12,675,223,558 JPY | 226,383,542 JPY | 12,901,607,100 JPY | 557,205,064 JPY | 25,457,136 JPY | 582,662,200 JPY |
| 11.2020 | 12,820 | 12,117,263,366 JPY | 202,031,834 JPY | 12,319,295,200 JPY | 557,960,192 JPY | 24,351,708 JPY | 582,311,900 JPY |
| 12.2020 | 12,519 | 11,151,426,692 JPY | 178,790,108 JPY | 11,330,216,800 JPY | 965,836,674 JPY | 23,241,726 JPY | 989,078,400 JPY |
| 01.2021 | 12,129 | 10,393,988,872 JPY | 157,476,028 JPY | 10,551,464,900 JPY | 757,437,820 JPY | 21,314,080 JPY | 778,751,900 JPY |
| 02.2021 | 11,635 | 9,583,164,739 JPY | 137,601,661 JPY | 9,720,766,400 JPY | 810,824,133 JPY | 19,874,367 JPY | 830,698,500 JPY |
| 03.2021 | 10,884 | 8,642,442,370 JPY | 119,258,530 JPY | 8,761,700,900 JPY | 940,722,369 JPY | 18,343,131 JPY | 959,065,500 JPY |
| 04.2021 | 9,820 | 8,077,397,282 JPY | 102,658,318 JPY | 8,180,055,600 JPY | 565,045,088 JPY | 16,600,212 JPY | 581,645,300 JPY |
| 05.2021 | 9,309 | 7,440,408,342 JPY | 87,183,958 JPY | 7,527,592,300 JPY | 636,988,940 JPY | 15,474,360 JPY | 652,463,300 JPY |
| 06.2021 | 8,600 | 6,652,037,074 JPY | 72,954,326 JPY | 6,724,991,400 JPY | 788,371,268 JPY | 14,229,632 JPY | 802,600,900 JPY |
| 07.2021 | 7,843 | 5,781,206,100 JPY | 60,314,500 JPY | 5,841,520,600 JPY | 870,830,974 JPY | 12,639,826 JPY | 883,470,800 JPY |
| 08.2021 | 7,074 | 5,012,370,195 JPY | 49,349,405 JPY | 5,061,719,600 JPY | 768,835,905 JPY | 10,965,095 JPY | 779,801,000 JPY |
| 09.2021 | 6,197 | 4,030,515,900 JPY | 39,790,600 JPY | 4,070,306,500 JPY | 981,854,295 JPY | 9,558,805 JPY | 991,413,100 JPY |
| 10.2021 | 5,014 | 3,392,037,035 JPY | 32,074,465 JPY | 3,424,111,500 JPY | 638,478,865 JPY | 7,716,135 JPY | 646,195,000 JPY |
| 11.2021 | 4,279 | 2,592,640,375 JPY | 25,542,825 JPY | 2,618,183,200 JPY | 799,396,660 JPY | 6,531,640 JPY | 805,928,300 JPY |
| 12.2021 | 3,293 | 2,154,481,857 JPY | 20,453,243 JPY | 2,174,935,100 JPY | 438,158,518 JPY | 5,089,582 JPY | 443,248,100 JPY |
| 01.2022 | 2,944 | 1,839,388,910 JPY | 16,211,090 JPY | 1,855,600,000 JPY | 315,092,947 JPY | 4,242,153 JPY | 319,335,100 JPY |
| 02.2022 | 2,639 | 1,516,934,758 JPY | 12,586,342 JPY | 1,529,521,100 JPY | 322,454,152 JPY | 3,624,748 JPY | 326,078,900 JPY |
| 03.2022 | 2,272 | 1,094,136,663 JPY | 9,584,737 JPY | 1,103,721,400 JPY | 422,798,095 JPY | 3,001,605 JPY | 425,799,700 JPY |
| 04.2022 | 1,702 | 902,844,735 JPY | 7,346,765 JPY | 910,191,500 JPY | 191,291,928 JPY | 2,237,972 JPY | 193,529,900 JPY |
| 05.2022 | 1,451 | 705,080,250 JPY | 5,477,250 JPY | 710,557,500 JPY | 197,764,485 JPY | 1,869,515 JPY | 199,634,000 JPY |
| 06.2022 | 1,165 | 499,380,699 JPY | 3,975,101 JPY | 503,355,800 JPY | 205,699,551 JPY | 1,502,149 JPY | 207,201,700 JPY |
| 07.2022 | 875 | 360,953,361 JPY | 2,869,639 JPY | 363,823,000 JPY | 138,427,338 JPY | 1,105,462 JPY | 139,532,800 JPY |
| 08.2022 | 702 | 262,229,302 JPY | 2,050,298 JPY | 264,279,600 JPY | 98,724,059 JPY | 819,341 JPY | 99,543,400 JPY |
| 09.2022 | 509 | 150,688,490 JPY | 1,433,910 JPY | 152,122,400 JPY | 111,540,812 JPY | 616,388 JPY | 112,157,200 JPY |
| 10.2022 | 327 | 85,135,923 JPY | 1,051,277 JPY | 86,187,200 JPY | 65,552,567 JPY | 382,633 JPY | 65,935,200 JPY |
| 11.2022 | 230 | 52,833,586 JPY | 821,914 JPY | 53,655,500 JPY | 32,302,337 JPY | 229,363 JPY | 32,531,700 JPY |
| 12.2022 | 174 | 40,770,967 JPY | 664,633 JPY | 41,435,600 JPY | 12,062,619 JPY | 157,281 JPY | 12,219,900 JPY |
| 01.2023 | 148 | 32,927,880 JPY | 542,520 JPY | 33,470,400 JPY | 7,843,087 JPY | 122,113 JPY | 7,965,200 JPY |
| 02.2023 | 134 | 27,628,703 JPY | 443,197 JPY | 28,071,900 JPY | 5,299,177 JPY | 99,323 JPY | 5,398,500 JPY |
| 03.2023 | 115 | 23,092,972 JPY | 359,328 JPY | 23,452,300 JPY | 4,535,731 JPY | 83,869 JPY | 4,619,600 JPY |
| 04.2023 | 93 | 19,322,658 JPY | 288,742 JPY | 19,611,400 JPY | 3,770,314 JPY | 70,586 JPY | 3,840,900 JPY |
| 05.2023 | 83 | 15,904,777 JPY | 229,423 JPY | 16,134,200 JPY | 3,417,881 JPY | 59,319 JPY | 3,477,200 JPY |
| 06.2023 | 64 | 12,573,969 JPY | 180,331 JPY | 12,754,300 JPY | 3,330,808 JPY | 49,092 JPY | 3,379,900 JPY |
| 07.2023 | 49 | 9,377,445 JPY | 140,955 JPY | 9,518,400 JPY | 3,196,524 JPY | 39,376 JPY | 3,235,900 JPY |
| 08.2023 | 43 | 7,133,596 JPY | 111,404 JPY | 7,245,000 JPY | 2,243,849 JPY | 29,551 JPY | 2,273,400 JPY |
| 09.2023 | 36 | 5,654,553 JPY | 88,847 JPY | 5,743,400 JPY | 1,479,043 JPY | 22,557 JPY | 1,501,600 JPY |
| 10.2023 | 23 | 4,697,022 JPY | 70,878 JPY | 4,767,900 JPY | 957,531 JPY | 17,969 JPY | 975,500 JPY |
| 11.2023 | 13 | 4,166,883 JPY | 55,917 JPY | 4,222,800 JPY | 530,139 JPY | 14,961 JPY | 545,100 JPY |
| 12.2023 | 12 | 2,868,255 JPY | 42,645 JPY | 2,910,900 JPY | 1,298,628 JPY | 13,272 JPY | 1,311,900 JPY |
| 01.2024 | 10 | 2,314,191 JPY | 33,509 JPY | 2,347,700 JPY | 554,064 JPY | 9,136 JPY | 563,200 JPY |
| 02.2024 | 9 | 1,952,261 JPY | 26,139 JPY | 1,978,400 JPY | 361,930 JPY | 7,370 JPY | 369,300 JPY |
| 03.2024 | 7 | 1,670,980 JPY | 19,920 JPY | 1,690,900 JPY | 281,281 JPY | 6,219 JPY | 287,500 JPY |
| 04.2024 | 6 | 1,442,602 JPY | 14,598 JPY | 1,457,200 JPY | 228,378 JPY | 5,322 JPY | 233,700 JPY |
| 05.2024 | 5 | 1,264,097 JPY | 10,003 JPY | 1,274,100 JPY | 178,505 JPY | 4,595 JPY | 183,100 JPY |
| 06.2024 | 5 | 1,085,024 JPY | 5,976 JPY | 1,091,000 JPY | 179,073 JPY | 4,027 JPY | 183,100 JPY |
| 07.2024 | 5 | 415,380 JPY | 2,520 JPY | 417,900 JPY | 669,644 JPY | 3,456 JPY | 673,100 JPY |
| 08.2024 | 4 | 263,803 JPY | 1,197 JPY | 265,000 JPY | 151,577 JPY | 1,323 JPY | 152,900 JPY |
| 09.2024 | 4 | 111,744 JPY | 356 JPY | 112,100 JPY | 152,059 JPY | 841 JPY | 152,900 JPY |
| 10.2024 | 3 | 0 JPY | 0 JPY | 0 JPY | 111,744 JPY | 356 JPY | 112,100 JPY |

Expected Amortisation

Expected Amortization to the Second Trust

JPY mil.

Assuming a Clean-Up Call at 10% of the Initial Outstanding Balance, annual prepayments of 10% and 0% defaults.



Distribution by Sub-Servicer

| Sub-Servicer | Number of Loans | Percentage of Loans | Outstanding Principal Balance | Percentage of Balance |
|--------------|-----------------|---------------------|-------------------------------|-----------------------|
| Cedyna | 15,635 | 58.60 % | 26,514,464,309 JPY | 59.60 % |
| Jaccs | 11,044 | 41.40 % | 17,973,904,512 JPY | 40.40 % |
| Total | 26,679 | 100.00 % | 44,488,368,821 JPY | 100.00 % |

Distribution by Brand

| Make | Number of Loans | Percentage of Loans | Outstanding Discounted Principal Balance | Percentage of Balance |
|--------------|-----------------|---------------------|--|-----------------------|
| VW | 17,154 | 64.30 % | 24,400,537,788 JPY | 54.85 % |
| Audi | 9,503 | 35.62 % | 20,036,372,907 JPY | 45.04 % |
| Bentley | 12 | 0.04 % | 45,227,281 JPY | 0.10 % |
| Lamborghini | 1 | 0.00 % | 374,332 JPY | 0.00 % |
| Other | 9 | 0.03 % | 5,856,513 JPY | 0.01 % |
| Total | 26,679 | 100.00 % | 44,488,368,821 JPY | 100.00 % |

Distribution by New and Used
Distribution by New and Used

| New or Used | Number of Loans | Percentage of Loans | Outstanding Discounted Principal Balance | Percentage of Balance |
|------------------|-----------------|---------------------|--|-----------------------|
| New | 17,853 | 66.92 % | 34,541,149,374 JPY | 77.64 % |
| Used | 7,587 | 28.44 % | 9,435,508,497 JPY | 21.21 % |
| Used (Prolonged) | 1,239 | 4.64 % | 511,710,950 JPY | 1.15 % |
| Total | 26,679 | 100.00 % | 44,488,368,821 JPY | 100.00 % |

Distribution by Brand New and Used

| New or Used | Number of Loans | Percentage of Loans | Outstanding Discounted Principal Balance | Percentage of Balance |
|-----------------------|-----------------|---------------------|--|-----------------------|
| VW New | 12,140 | 45.50 % | 20,169,398,917 JPY | 45.34 % |
| VW Used | 4,138 | 15.51 % | 3,987,900,648 JPY | 8.96 % |
| VW Used (Prolonged) | 876 | 3.28 % | 243,238,223 JPY | 0.55 % |
| Audi New | 5,704 | 21.38 % | 14,344,418,899 JPY | 32.24 % |
| Audi Used | 3,436 | 12.88 % | 5,423,481,281 JPY | 12.19 % |
| Audi Used (Prolonged) | 363 | 1.36 % | 268,472,727 JPY | 0.60 % |
| Other | 22 | 0.08 % | 51,458,126 JPY | 0.12 % |
| Total | 26,679 | 100.00 % | 44,488,368,821 JPY | 100.00 % |

Distribution by Product Type

Loan Type List

| Loan Type | Description |
|-----------|---|
| 100 | Volkswagen Owner's Plan |
| 100 | Audi Owner's Plan |
| 100 | Lamborghini Auto Loan |
| 100 | Bentley Auto Loan |
| 101 | Twin Loan |
| 105 | Refinanced Volkswagen Solutions |
| 106 | Refinanced Volkswagen Das Welt Auto with refinance option * |
| 106 | Refinanced Audi S-Loan/ S-Loan Plus |
| 106 | Refinanced Lamborghini Hyper Premium Plan |
| 106 | Refinanced Bentley My Flying B |
| 140 | Volkswagen Solutions |
| 150 | Volkswagen Das Welt Auto with refinance option ** |
| 150 | Audi S-Loan |
| 150 | Lamborghini Hyper Premium Plan |
| 150 | Bentley My Flying B |
| 151 | Audi S-Loan Plus |

(*) The name was changed from "Refinanced Volkswagen GUC with refinance option" effective from 1 February 2012.

No other changes were made to auto loan agreements.

(**) The name was changed from "Volkswagen GUC with refinance option" effective from 1 February 2012.

No other changes were made to auto loan agreements.

Product Type

| Loan Type | Number of Loans | Percentage of Loans | Outstanding Discounted Principal Balance | Percentage of Balance |
|--------------|-----------------|---------------------|--|-----------------------|
| 100 | 3,863 | 14.48 % | 4,028,610,483 JPY | 9.06 % |
| 101 | 0 | 0.00 % | 0 JPY | 0.00 % |
| 105 | 852 | 3.19 % | 239,883,449 JPY | 0.54 % |
| 106 | 387 | 1.45 % | 271,827,501 JPY | 0.61 % |
| 140-VFJ | 1,753 | 6.57 % | 2,916,720,393 JPY | 6.56 % |
| 140-Dealer | 9,456 | 35.44 % | 16,256,717,297 JPY | 36.54 % |
| 150 | 9,899 | 37.10 % | 19,606,067,363 JPY | 44.07 % |
| 151 | 469 | 1.76 % | 1,168,542,335 JPY | 2.63 % |
| Total | 26,679 | 100.00 % | 44,488,368,821 JPY | 100.00 % |

Credit Type

| Credit Type | Number of Loans | Percentage of Loans | Outstanding Discounted Principal Balance | Percentage of Balance |
|----------------------------|-----------------|---------------------|--|-----------------------|
| Balloon Type Loan | 21,577 | 80.88 % | 39,948,047,388 JPY | 89.79 % |
| Equal Instalment Type Loan | 5,102 | 19.12 % | 4,540,321,433 JPY | 10.21 % |
| Total | 26,679 | 100.00 % | 44,488,368,821 JPY | 100.00 % |

Distribution by RV

| Loan Type | Number of Loans | Percentage of Balance | Outstanding Discounted Principal Balance |
|-------------------------------|-----------------|-----------------------|--|
| 100/101/105/106 | 5,102 | 10.21 % | 4,540,321,433 JPY |
| 140-VFJ (excl. balloon) | | 3.40 % | 1,513,816,283 JPY |
| 140-VFJ (balloon) | | 3.15 % | 1,402,904,110 JPY |
| 140-VFJ | 1,753 | 6.56 % | 2,916,720,393 JPY |
| 140-Dealer (excl. balloon) | | 18.86 % | 8,391,223,753 JPY |
| 140-Dealer (balloon) | | 17.68 % | 7,865,493,544 JPY |
| 140-Dealer | 9,456 | 36.54 % | 16,256,717,297 JPY |
| 150 (excl. balloon) | | 18.07 % | 8,039,189,797 JPY |
| 150 (balloon) | | 26.00 % | 11,566,877,566 JPY |
| 150 | 9,899 | 44.07 % | 19,606,067,363 JPY |
| 151 (excl. balloon) | | 0.59 % | 263,255,611 JPY |
| 151 (balloon) | | 2.03 % | 905,286,724 JPY |
| 151 | 469 | 2.63 % | 1,168,542,335 JPY |
| Total | 26,679 | 100.00 % | 44,488,368,821 JPY |

| Type of Payment Portion | Percentage of Balance | Outstanding Discounted Principal Balance |
|-----------------------------|-----------------------|--|
| Monthly Installment Portion | 51.13 % | 22,747,806,877 JPY |
| Balloon Portion | 48.87 % | 21,740,561,944 JPY |
| Total | 100.00 % | 44,488,368,821 JPY |

Distribution by Brand New and Used
Audi

| New or Used | Number of Loans | Percentage of Loans | Outstanding Discounted Principal Balance | Percentage of Balance |
|--------------|-----------------|---------------------|--|-----------------------|
| New | 5,704 | 60.02 % | 14,344,418,899 JPY | 71.59 % |
| Used | 3,799 | 39.98 % | 5,691,954,008 JPY | 28.41 % |
| Total | 9,503 | 100.00 % | 20,036,372,907 JPY | 100.00 % |

Bentley

| New or Used | Number of Loans | Percentage of Loans | Outstanding Discounted Principal Balance | Percentage of Balance |
|--------------|-----------------|---------------------|--|-----------------------|
| New | 8 | 66.67 % | 26,957,226 JPY | 59.60 % |
| Used | 4 | 33.33 % | 18,270,055 JPY | 40.40 % |
| Total | 12 | 100.00 % | 45,227,281 JPY | 100.00 % |

Lamborghini

| New or Used | Number of Loans | Percentage of Loans | Outstanding Discounted Principal Balance | Percentage of Balance |
|--------------|-----------------|---------------------|--|-----------------------|
| New | 1 | 100.00 % | 374,332 JPY | 100.00 % |
| Used | 0 | 0.00 % | 0 JPY | 0.00 % |
| Total | 1 | 100.00 % | 374,332 JPY | 100.00 % |

VW

| New or Used | Number of Loans | Percentage of Loans | Outstanding Discounted Principal Balance | Percentage of Balance |
|--------------|-----------------|---------------------|--|-----------------------|
| New | 12,140 | 70.77 % | 20,169,398,917 JPY | 82.66 % |
| Used | 5,014 | 29.23 % | 4,231,138,871 JPY | 17.34 % |
| Total | 17,154 | 100.00 % | 24,400,537,788 JPY | 100.00 % |

OTHER

| New or Used | Number of Loans | Percentage of Loans | Outstanding Discounted Principal Balance | Percentage of Balance |
|--------------|-----------------|---------------------|--|-----------------------|
| New | 0 | 0.00 % | 0 JPY | 0.00 % |
| Used | 9 | 100.00 % | 5,856,513 JPY | 100.00 % |
| Total | 9 | 100.00 % | 5,856,513 JPY | 100.00 % |

Distribution by Customer Type

Customer Type

| Customer Type | Number of Loans | Percentage of Loans | Outstanding Discounted Principal Balance | Percentage of Balance |
|---------------|-----------------|---------------------|--|-----------------------|
| Retail | 24,141 | 90.49 % | 38,512,553,907 JPY | 86.57 % |
| Corporate | 2,538 | 9.51 % | 5,975,814,914 JPY | 13.43 % |
| Total | 26,679 | 100.00 % | 44,488,368,821 JPY | 100.00 % |

Distribution by Outstanding Discounted Principal Balance

| Outstanding Discounted Principal Balance | Number of Loans | Percentage of Loans | Outstanding Discounted Principal Balance | Percentage of Balance |
|--|-----------------|---------------------|--|-----------------------|
| <= 500,000 JPY | 2,789 | 10.45 % | 754,538,215 JPY | 1.70 % |
| 500,001 JPY - 1,000,000 JPY | 4,382 | 16.42 % | 3,353,260,072 JPY | 7.54 % |
| 1,000,001 JPY - 1,500,000 JPY | 5,904 | 22.13 % | 7,432,491,305 JPY | 16.71 % |
| 1,500,001 JPY - 2,000,000 JPY | 5,528 | 20.72 % | 9,625,536,533 JPY | 21.64 % |
| 2,000,001 JPY - 2,500,000 JPY | 3,648 | 13.67 % | 8,110,681,329 JPY | 18.23 % |
| 2,500,001 JPY - 3,000,000 JPY | 1,819 | 6.82 % | 4,942,803,993 JPY | 11.11 % |
| 3,000,001 JPY - 3,500,000 JPY | 1,038 | 3.89 % | 3,356,872,422 JPY | 7.55 % |
| 3,500,001 JPY - 4,000,000 JPY | 669 | 2.51 % | 2,497,220,829 JPY | 5.61 % |
| 4,000,001 JPY - 4,500,000 JPY | 379 | 1.42 % | 1,600,132,992 JPY | 3.60 % |
| 4,500,001 JPY - 5,000,000 JPY | 224 | 0.84 % | 1,059,171,015 JPY | 2.38 % |
| 5,000,001 JPY - 6,000,000 JPY | 199 | 0.75 % | 1,080,098,359 JPY | 2.43 % |
| 6,000,001 JPY - 7,000,000 JPY | 71 | 0.27 % | 456,080,709 JPY | 1.03 % |
| 7,000,001 JPY - 8,000,000 JPY | 24 | 0.09 % | 176,362,912 JPY | 0.40 % |
| 8,000,001 JPY - 9,000,000 JPY | 5 | 0.02 % | 43,118,136 JPY | 0.10 % |
| 9,000,001 JPY - 10,000,000 JPY | 0 | 0.00 % | 0 JPY | 0.00 % |
| >= 10,000,001 JPY | 0 | 0.00 % | 0 JPY | 0.00 % |
| Total | 26,679 | 100.00 % | 44,488,368,821 JPY | 100.00 % |

Statistics

| | |
|---|---------------|
| Minimum Outstanding Discounted Principal Balance | 3,491 JPY |
| Maximum Outstanding Discounted Principal Balance | 8,947,196 JPY |
| Average Outstanding Discounted Principal Balance | 1,667,543 JPY |

Distribution by Original Principal Amount

| Original Principal Balance | Number of Loans | Percentage of Loans | Outstanding Discounted Principal Balance | Percentage of Balance |
|--------------------------------|-----------------|---------------------|--|-----------------------|
| <= 500,000 JPY | 191 | 0.72 % | 26,872,807 JPY | 0.06 % |
| 500,001 JPY - 1,000,000 JPY | 1,598 | 5.99 % | 595,911,441 JPY | 1.34 % |
| 1,000,001 JPY - 1,500,000 JPY | 2,865 | 10.74 % | 2,022,979,415 JPY | 4.55 % |
| 1,500,001 JPY - 2,000,000 JPY | 4,343 | 16.28 % | 4,559,478,151 JPY | 10.25 % |
| 2,000,001 JPY - 2,500,000 JPY | 4,511 | 16.91 % | 6,240,439,498 JPY | 14.03 % |
| 2,500,001 JPY - 3,000,000 JPY | 4,390 | 16.45 % | 7,454,481,039 JPY | 16.76 % |
| 3,000,001 JPY - 3,500,000 JPY | 3,068 | 11.50 % | 6,230,659,280 JPY | 14.01 % |
| 3,500,001 JPY - 4,000,000 JPY | 1,996 | 7.48 % | 4,685,107,310 JPY | 10.53 % |
| 4,000,001 JPY - 4,500,000 JPY | 1,104 | 4.14 % | 2,982,267,915 JPY | 6.70 % |
| 4,500,001 JPY - 5,000,000 JPY | 835 | 3.13 % | 2,513,862,488 JPY | 5.65 % |
| 5,000,001 JPY - 6,000,000 JPY | 836 | 3.13 % | 2,907,132,266 JPY | 6.53 % |
| 6,000,001 JPY - 7,000,000 JPY | 474 | 1.78 % | 1,928,220,342 JPY | 4.33 % |
| 7,000,001 JPY - 8,000,000 JPY | 208 | 0.78 % | 956,137,180 JPY | 2.15 % |
| 8,000,001 JPY - 9,000,000 JPY | 117 | 0.44 % | 600,442,556 JPY | 1.35 % |
| 9,000,001 JPY - 10,000,000 JPY | 69 | 0.26 % | 402,264,537 JPY | 0.90 % |
| >= 10,000,001 JPY | 74 | 0.28 % | 382,112,596 JPY | 0.86 % |
| Total | 26,679 | 100.00 % | 44,488,368,821 JPY | 100.00 % |

Statistics

| | |
|---|----------------|
| Minimum Original Principal Balance | 170,000 JPY |
| Maximum Original Principal Balance | 25,000,000 JPY |
| Average Original Principal Balance | 2,751,030 JPY |

Distribution by Interest Rate paid by the Obligor

| Interest Rate paid by the Obligor | Number of Loans | Percentage of Loans | Outstanding Discounted Principal Balance | Percentage of Balance |
|-----------------------------------|-----------------|---------------------|--|-----------------------|
| < 0.900 % | 601 | 2.25 % | 1,348,482,080 JPY | 3.03 % |
| 0.900 % < 1.500 % | 4,977 | 18.66 % | 10,120,178,397 JPY | 22.75 % |
| 1.500 % < 2.000 % | 9,925 | 37.20 % | 17,899,188,201 JPY | 40.23 % |
| 2.000 % < 2.500 % | 248 | 0.93 % | 380,116,982 JPY | 0.85 % |
| 2.500 % < 3.000 % | 6,180 | 23.16 % | 9,693,706,468 JPY | 21.79 % |
| 3.000 % < 3.500 % | 1,017 | 3.81 % | 693,826,663 JPY | 1.56 % |
| 3.500 % < 4.000 % | 3,698 | 13.86 % | 4,321,669,195 JPY | 9.71 % |
| 4.000 % < 4.500 % | 33 | 0.12 % | 31,200,835 JPY | 0.07 % |
| 4.500 % < 5.000 % | 0 | 0.00 % | 0 JPY | 0.00 % |
| 5.000 % or more | 0 | 0.00 % | 0 JPY | 0.00 % |
| Total | 26,679 | 100.00 % | 44,488,368,821 JPY | 100.00 % |

| Statistics | |
|---------------------------------------|--------|
| Minimum Interest Rate | 0.00 % |
| Maximum Interest Rate | 4.49 % |
| Weighted Average Interest Rate | 2.09 % |

Distribution by Original Term

| Length of Original Term (months) | Number of Loans | Percentage of Loans | Outstanding Discounted Principal Balance | Percentage of Balance |
|----------------------------------|-----------------|---------------------|--|-----------------------|
| 6 - 12 | 1 | 0.00 % | 24,526 JPY | 0.00 % |
| 13 - 18 | 13 | 0.05 % | 2,077,782 JPY | 0.00 % |
| 19 - 24 | 554 | 2.08 % | 168,759,540 JPY | 0.38 % |
| 25 - 30 | 64 | 0.24 % | 23,144,681 JPY | 0.05 % |
| 31 - 36 | 9,212 | 34.53 % | 16,545,526,234 JPY | 37.19 % |
| 37 - 42 | 69 | 0.26 % | 38,703,680 JPY | 0.09 % |
| 43 - 48 | 1,473 | 5.52 % | 1,560,474,255 JPY | 3.51 % |
| 49 - 54 | 24 | 0.09 % | 23,453,382 JPY | 0.05 % |
| 55 - 60 | 14,439 | 54.12 % | 24,724,688,698 JPY | 55.58 % |
| 61 - 66 | 19 | 0.07 % | 23,487,189 JPY | 0.05 % |
| 67 - 72 | 641 | 2.40 % | 991,713,422 JPY | 2.23 % |
| 73 - 84 | 170 | 0.64 % | 386,315,432 JPY | 0.87 % |
| Total | 26,679 | 100.00 % | 44,488,368,821 JPY | 100.00 % |

| Statistics | |
|---|-------|
| Minimum Original Term in months | 12 |
| Maximum Original Term in months | 84 |
| Weighted Average Original Term in months | 50.96 |

Distribution by Remaining Term

| Length of Remaining Term (months) | Number of Loans | Percentage of Loans | Outstanding Discounted Principal Balance | Percentage of Balance |
|-----------------------------------|-----------------|---------------------|--|-----------------------|
| <= 12 | 8,309 | 31.14 % | 11,226,436,178 JPY | 25.23 % |
| 13 - 18 | 3,370 | 12.63 % | 5,632,431,201 JPY | 12.66 % |
| 19 - 24 | 2,180 | 8.17 % | 3,530,000,069 JPY | 7.93 % |
| 25 - 30 | 3,511 | 13.16 % | 5,632,982,410 JPY | 12.66 % |
| 31 - 36 | 5,030 | 18.85 % | 9,245,736,514 JPY | 20.78 % |
| 37 - 42 | 2,828 | 10.60 % | 5,913,851,726 JPY | 13.29 % |
| 43 - 48 | 1,221 | 4.58 % | 2,756,458,044 JPY | 6.20 % |
| 49 - 54 | 147 | 0.55 % | 331,769,553 JPY | 0.75 % |
| 55 - 60 | 70 | 0.26 % | 175,932,542 JPY | 0.40 % |
| 61 - 66 | 8 | 0.03 % | 25,850,094 JPY | 0.06 % |
| 67 - 72 | 5 | 0.02 % | 16,920,490 JPY | 0.04 % |
| 73 - 84 | 0 | 0.00 % | 0 JPY | 0.00 % |
| Total | 26,679 | 100.00 % | 44,488,368,821 JPY | 100.00 % |

| Statistics | |
|--|-------|
| Minimum Remaining Term in months | 1 |
| Maximum Remaining Term in months | 72 |
| Weighted Average Remaining Term in months | 24.71 |

Distribution by Seasoning

| Seasoning (months) | Number of Loans | Percentage of Loans | Outstanding Discounted Principal Balance | Percentage of Balance |
|--------------------|-----------------|---------------------|--|-----------------------|
| <= 12 | 229 | 0.86 % | 542,390,225 JPY | 1.22 % |
| 13 - 18 | 2,431 | 9.11 % | 5,077,145,564 JPY | 11.41 % |
| 19 - 24 | 6,662 | 24.97 % | 12,625,473,306 JPY | 28.38 % |
| 25 - 30 | 8,747 | 32.79 % | 15,401,274,625 JPY | 34.62 % |
| 31 - 36 | 5,400 | 20.24 % | 7,937,022,687 JPY | 17.84 % |
| 37 - 42 | 1,000 | 3.75 % | 1,134,762,351 JPY | 2.55 % |
| 43 - 48 | 914 | 3.43 % | 851,942,541 JPY | 1.91 % |
| 49 - 54 | 586 | 2.20 % | 472,830,593 JPY | 1.06 % |
| 55 - 60 | 665 | 2.49 % | 423,078,444 JPY | 0.95 % |
| 61 - 66 | 21 | 0.08 % | 14,076,758 JPY | 0.03 % |
| 67 - 72 | 22 | 0.08 % | 7,367,949 JPY | 0.02 % |
| 73 - 84 | 2 | 0.01 % | 1,003,778 JPY | 0.00 % |
| Total | 26,679 | 100.00 % | 44,488,368,821 JPY | 100.00 % |

| Statistics | |
|--------------------------------------|-------|
| Minimum Seasoning in months | 11 |
| Maximum Seasoning in months | 73 |
| Weighted Average Seasoning in months | 26.25 |

Distribution by Type of Car
Type of Car

| Type of Car | Number of Loans | Percentage of Loans | Outstanding Discounted Principal Balance | Percentage of Balance |
|--------------|-----------------|---------------------|--|-----------------------|
| New | 17,853 | 66.92 % | 34,541,149,374 JPY | 77.64 % |
| Used | 8,826 | 33.08 % | 9,947,219,447 JPY | 22.36 % |
| Total | 26,679 | 100.00 % | 44,488,368,821 JPY | 100.00 % |

Type of Car: Only Balloon Loans

| Type of Car | Number of Loans | Percentage of Loans | Outstanding Discounted Principal Balance | Percentage of Balance |
|--------------|-----------------|---------------------|--|-----------------------|
| New | 16,696 | 77.38 % | 33,217,869,828 JPY | 83.15 % |
| Used | 4,881 | 22.62 % | 6,730,177,560 JPY | 16.85 % |
| Total | 21,577 | 100.00 % | 39,948,047,388 JPY | 100.00 % |

Type of Car: Only Equal Instalment Loans

| Type of Car | Number of Loans | Percentage of Loans | Outstanding Discounted Principal Balance | Percentage of Balance |
|--------------|-----------------|---------------------|--|-----------------------|
| New | 1,157 | 22.68 % | 1,323,279,546 JPY | 29.15 % |
| Used | 3,945 | 77.32 % | 3,217,041,887 JPY | 70.85 % |
| Total | 5,102 | 100.00 % | 4,540,321,433 JPY | 100.00 % |

Distribution by Brand and Model

| Make | Model | Number of Loans | Percentage of Loans | Outstanding Discounted Principal Balance | Percentage of Balance |
|------------------------------|--------------------|-----------------|---------------------|--|-----------------------|
| Audi | A1 | 872 | 3.27 % | 1,061,475,732 JPY | 2.39 % |
| | A3 | 2,421 | 9.07 % | 3,781,072,509 JPY | 8.50 % |
| | A4 | 2,016 | 7.56 % | 4,490,499,972 JPY | 10.09 % |
| | A5 | 445 | 1.67 % | 1,019,840,759 JPY | 2.29 % |
| | A6 | 570 | 2.14 % | 1,412,978,510 JPY | 3.18 % |
| | A7 | 223 | 0.84 % | 715,632,400 JPY | 1.61 % |
| | A8 | 68 | 0.25 % | 238,586,412 JPY | 0.54 % |
| | S1 | 87 | 0.33 % | 165,950,185 JPY | 0.37 % |
| | S3 | 299 | 1.12 % | 750,566,308 JPY | 1.69 % |
| | S4 | 79 | 0.30 % | 231,798,655 JPY | 0.52 % |
| | S5 | 52 | 0.19 % | 149,244,849 JPY | 0.34 % |
| | S6 | 33 | 0.12 % | 131,202,066 JPY | 0.29 % |
| | S7 | 21 | 0.08 % | 71,122,010 JPY | 0.16 % |
| | S8 | 14 | 0.05 % | 59,931,991 JPY | 0.13 % |
| | RS3 | 36 | 0.13 % | 123,834,823 JPY | 0.28 % |
| | RS4 | 12 | 0.04 % | 38,350,659 JPY | 0.09 % |
| | RS5 | 12 | 0.04 % | 45,432,950 JPY | 0.10 % |
| | RS6 | 12 | 0.04 % | 47,033,940 JPY | 0.11 % |
| | RS7 | 11 | 0.04 % | 51,255,791 JPY | 0.12 % |
| | Q2 | 59 | 0.22 % | 160,231,849 JPY | 0.36 % |
| | Q3 | 784 | 2.94 % | 1,539,275,964 JPY | 3.46 % |
| | Q5 | 476 | 1.78 % | 1,193,835,035 JPY | 2.68 % |
| | Q7 | 175 | 0.66 % | 751,998,942 JPY | 1.69 % |
| | RSQ3 | 21 | 0.08 % | 81,815,058 JPY | 0.18 % |
| | TT | 696 | 2.61 % | 1,680,715,259 JPY | 3.78 % |
| | R8 | 9 | 0.03 % | 42,690,279 JPY | 0.10 % |
| | AUDI OTHERS | 0 | 0.00 % | 0 JPY | 0.00 % |
| | Subtotal | 9,503 | 35.62 % | 20,036,372,907 JPY | 45.04 % |
| Bentley | ARNAGE | 0 | 0.00 % | 0 JPY | 0.00 % |
| | AZURE | 0 | 0.00 % | 0 JPY | 0.00 % |
| | BENTAYGA | 1 | 0.00 % | 6,820,724 JPY | 0.02 % |
| | CONTINENTAL | 10 | 0.04 % | 36,661,731 JPY | 0.08 % |
| | FLYING SPUR | 0 | 0.00 % | 0 JPY | 0.00 % |
| | MULSANNE | 1 | 0.00 % | 1,744,826 JPY | 0.00 % |
| | BENTLEY OTHERS | 0 | 0.00 % | 0 JPY | 0.00 % |
| | | Subtotal | 12 | 0.04 % | 45,227,281 JPY |
| Lamborghini | AVENTADOR | 0 | 0.00 % | 0 JPY | 0.00 % |
| | DIABLO | 0 | 0.00 % | 0 JPY | 0.00 % |
| | GALLARDO | 0 | 0.00 % | 0 JPY | 0.00 % |
| | HURACÁN | 1 | 0.00 % | 374,332 JPY | 0.00 % |
| | MULCIELAGO | 0 | 0.00 % | 0 JPY | 0.00 % |
| | LAMBORGHINI OTHERS | 0 | 0.00 % | 0 JPY | 0.00 % |
| | | Subtotal | 1 | 0.00 % | 374,332 JPY |
| VW | ARTEON | 1 | 0.00 % | 3,846,625 JPY | 0.01 % |
| | BEETLE | 1,740 | 6.52 % | 2,337,571,313 JPY | 5.25 % |
| | BORA | 0 | 0.00 % | 0 JPY | 0.00 % |
| | EOS | 0 | 0.00 % | 0 JPY | 0.00 % |
| | GOLF | 6,514 | 24.42 % | 9,966,930,566 JPY | 22.40 % |
| | JETTA | 9 | 0.03 % | 2,350,069 JPY | 0.01 % |
| | LUPO | 1 | 0.00 % | 1,178,457 JPY | 0.00 % |
| | PASSAT | 1,522 | 5.70 % | 2,683,048,630 JPY | 6.03 % |
| | POLO | 3,594 | 13.47 % | 3,993,063,325 JPY | 8.98 % |
| | SCIROCCO | 35 | 0.13 % | 31,196,802 JPY | 0.07 % |
| | SHARAN | 602 | 2.26 % | 1,024,228,602 JPY | 2.30 % |
| | TIGUAN | 583 | 2.19 % | 1,073,205,154 JPY | 2.41 % |
| | TOUAREG | 63 | 0.24 % | 132,406,529 JPY | 0.30 % |
| | TOURAN | 1,405 | 5.27 % | 2,378,770,129 JPY | 5.35 % |
| | UP | 1,085 | 4.07 % | 772,741,587 JPY | 1.74 % |
| | VENTO | 0 | 0.00 % | 0 JPY | 0.00 % |
| | VW OTHERS | 0 | 0.00 % | 0 JPY | 0.00 % |
| | Subtotal | 17,154 | 64.29 % | 24,400,537,788 JPY | 54.84 % |
| Non VW Group Vehicles | | 9 | 0.03 % | 5,856,513 JPY | 0.01 % |
| | Subtotal | 9 | 0.03 % | 5,856,513 JPY | 0.01 % |
| | Total | 26,679 | 100.00 % | 44,488,368,821 JPY | 100.00 % |

Geographic Distribution by Prefecture

| Prefecture | Number of Loans | Percentage of Loans | Outstanding Discounted Principal Balance | Percentage of Balance |
|--------------|-----------------|---------------------|--|-----------------------|
| Tokyo | 4,023 | 15.08 % | 7,650,641,006 JPY | 17.20 % |
| Kanagawa | 2,608 | 9.78 % | 4,491,345,688 JPY | 10.10 % |
| Aichi | 1,930 | 7.23 % | 3,079,762,037 JPY | 6.92 % |
| Saitama | 1,748 | 6.55 % | 2,848,499,772 JPY | 6.40 % |
| Osaka | 1,579 | 5.92 % | 2,800,615,586 JPY | 6.30 % |
| Chiba | 1,194 | 4.48 % | 1,950,297,608 JPY | 4.38 % |
| Fukuoka | 1,129 | 4.23 % | 1,926,949,708 JPY | 4.33 % |
| Hokkaido | 1,016 | 3.81 % | 1,813,886,758 JPY | 4.08 % |
| Hyogo | 1,006 | 3.77 % | 1,651,269,336 JPY | 3.71 % |
| Shizuoka | 788 | 2.95 % | 1,301,540,646 JPY | 2.93 % |
| Ibaraki | 841 | 3.15 % | 1,289,956,558 JPY | 2.90 % |
| Tochigi | 593 | 2.22 % | 984,403,588 JPY | 2.21 % |
| Hiroshima | 634 | 2.38 % | 955,560,328 JPY | 2.15 % |
| Kyoto | 520 | 1.95 % | 818,793,992 JPY | 1.84 % |
| Miyagi | 497 | 1.86 % | 789,001,673 JPY | 1.77 % |
| Gunma | 530 | 1.99 % | 768,142,929 JPY | 1.73 % |
| Okayama | 376 | 1.41 % | 615,763,619 JPY | 1.38 % |
| Gifu | 407 | 1.53 % | 613,095,627 JPY | 1.38 % |
| Nagano | 404 | 1.51 % | 608,861,706 JPY | 1.37 % |
| Mie | 352 | 1.32 % | 517,572,585 JPY | 1.16 % |
| Fukushima | 320 | 1.20 % | 470,048,098 JPY | 1.06 % |
| Yamaguchi | 277 | 1.04 % | 438,498,327 JPY | 0.99 % |
| Niigata | 306 | 1.15 % | 435,407,599 JPY | 0.98 % |
| Nara | 229 | 0.86 % | 375,055,666 JPY | 0.84 % |
| Oita | 239 | 0.90 % | 370,405,921 JPY | 0.83 % |
| Yamanashi | 202 | 0.76 % | 345,983,973 JPY | 0.78 % |
| Ishikawa | 216 | 0.81 % | 335,548,743 JPY | 0.75 % |
| Shiga | 215 | 0.81 % | 329,436,832 JPY | 0.74 % |
| Kumamoto | 216 | 0.81 % | 318,774,147 JPY | 0.72 % |
| Toyama | 205 | 0.77 % | 312,941,143 JPY | 0.70 % |
| Kagoshima | 190 | 0.71 % | 311,486,289 JPY | 0.70 % |
| Wakayama | 173 | 0.65 % | 302,066,271 JPY | 0.68 % |
| Fukui | 170 | 0.64 % | 289,601,633 JPY | 0.65 % |
| Yamagata | 195 | 0.73 % | 284,393,485 JPY | 0.64 % |
| Iwate | 133 | 0.50 % | 212,679,832 JPY | 0.48 % |
| Nagasaki | 133 | 0.50 % | 207,485,666 JPY | 0.47 % |
| Tokushima | 125 | 0.47 % | 203,958,382 JPY | 0.46 % |
| Kagawa | 145 | 0.54 % | 201,760,684 JPY | 0.45 % |
| Miyazaki | 121 | 0.45 % | 194,059,017 JPY | 0.44 % |
| Saga | 120 | 0.45 % | 191,186,611 JPY | 0.43 % |
| Shimane | 94 | 0.35 % | 168,015,007 JPY | 0.38 % |
| Ehime | 116 | 0.43 % | 167,857,610 JPY | 0.38 % |
| Aomori | 93 | 0.35 % | 142,928,603 JPY | 0.32 % |
| Akita | 88 | 0.33 % | 140,003,289 JPY | 0.31 % |
| Tottori | 86 | 0.32 % | 120,356,376 JPY | 0.27 % |
| Kouchi | 58 | 0.22 % | 86,449,707 JPY | 0.19 % |
| Okinawa | 39 | 0.15 % | 56,019,160 JPY | 0.13 % |
| Total | 26,679 | 100.00 % | 44,488,368,821 JPY | 100.00 % |

Distribution by Obligor Concentration
Distribution of Loan Contracts and Vehicles per Obligor

| Contract Concentration | Number of Customers | Percentage of Customers | Number of Loans | Percentage of Loans | Outstanding Discounted Principal Balance | Percentage of Balance |
|------------------------|---------------------|-------------------------|-----------------|---------------------|--|-----------------------|
| 1 | 25,666 | 96.66 % | 25,666 | 96.20 % | 42,487,120,979 JPY | 95.50 % |
| 2 | 824 | 3.10 % | 936 | 3.51 % | 1,814,432,192 JPY | 4.08 % |
| 3 | 55 | 0.21 % | 64 | 0.24 % | 165,754,025 JPY | 0.37 % |
| 4 | 7 | 0.03 % | 13 | 0.05 % | 21,061,625 JPY | 0.05 % |
| 5 | 0 | 0.00 % | 0 | 0.00 % | 0 JPY | 0.00 % |
| 6 - 10 | 0 | 0.00 % | 0 | 0.00 % | 0 JPY | 0.00 % |
| 11 or more | 0 | 0.00 % | 0 | 0.00 % | 0 JPY | 0.00 % |
| Total | 26,552 | 100.00 % | 26,679 | 100.00 % | 44,488,368,821 JPY | 100.00 % |

Top 20 Obligor

| Number | Number of Contracts | Outstanding Discounted Principal Balance | Percentage of Balance |
|--------------------|---------------------|--|-----------------------|
| 1 | 2 | 12,891,336 JPY | 0.03 % |
| 2 | 2 | 11,552,123 JPY | 0.03 % |
| 3 | 2 | 11,326,741 JPY | 0.03 % |
| 4 | 2 | 11,092,574 JPY | 0.02 % |
| 5 | 2 | 9,367,485 JPY | 0.02 % |
| 6 | 1 | 8,947,196 JPY | 0.02 % |
| 7 | 1 | 8,921,126 JPY | 0.02 % |
| 8 | 1 | 8,666,600 JPY | 0.02 % |
| 9 | 1 | 8,554,506 JPY | 0.02 % |
| 10 | 2 | 8,302,750 JPY | 0.02 % |
| 11 | 2 | 8,039,315 JPY | 0.02 % |
| 12 | 1 | 8,028,708 JPY | 0.02 % |
| 13 | 1 | 7,915,255 JPY | 0.02 % |
| 14 | 1 | 7,882,392 JPY | 0.02 % |
| 15 | 1 | 7,761,746 JPY | 0.02 % |
| 16 | 1 | 7,631,547 JPY | 0.02 % |
| 17 | 1 | 7,577,532 JPY | 0.02 % |
| 18 | 1 | 7,512,661 JPY | 0.02 % |
| 19 | 2 | 7,496,743 JPY | 0.02 % |
| 20 | 2 | 7,457,927 JPY | 0.02 % |
| Total 1 -20 | 29 | 176,926,263 JPY | 0.40 % |

Remarks:

Figures above are calculated based on each of the Sub-Servicers respectively and not across both of the Sub-Servicers.

Distribution by Contract Start Month

| Origination Month | Number of Loans | Percentage of Loans | Outstanding Discounted Principal Balance | Percentage of Balance |
|-------------------|-----------------|---------------------|--|-----------------------|
| 09.2012 | 2 | 0.01 % | 1,003,778 JPY | 0.00 % |
| 10.2012 | 0 | 0.00 % | 0 JPY | 0.00 % |
| 11.2012 | 0 | 0.00 % | 0 JPY | 0.00 % |
| 12.2012 | 6 | 0.02 % | 1,835,946 JPY | 0.00 % |
| 01.2013 | 3 | 0.01 % | 345,800 JPY | 0.00 % |
| 02.2013 | 4 | 0.01 % | 1,759,343 JPY | 0.00 % |
| 03.2013 | 9 | 0.03 % | 3,426,860 JPY | 0.01 % |
| 04.2013 | 2 | 0.01 % | 270,775 JPY | 0.00 % |
| 05.2013 | 0 | 0.00 % | 0 JPY | 0.00 % |
| 06.2013 | 2 | 0.01 % | 716,896 JPY | 0.00 % |
| 07.2013 | 7 | 0.03 % | 3,520,055 JPY | 0.01 % |
| 08.2013 | 5 | 0.02 % | 6,848,778 JPY | 0.02 % |
| 09.2013 | 5 | 0.02 % | 2,720,254 JPY | 0.01 % |
| 10.2013 | 4 | 0.01 % | 1,156,783 JPY | 0.00 % |
| 11.2013 | 65 | 0.24 % | 37,489,236 JPY | 0.08 % |
| 12.2013 | 131 | 0.49 % | 77,352,800 JPY | 0.17 % |
| 01.2014 | 84 | 0.31 % | 53,303,974 JPY | 0.12 % |
| 02.2014 | 153 | 0.57 % | 98,446,289 JPY | 0.22 % |
| 03.2014 | 228 | 0.85 % | 155,329,362 JPY | 0.35 % |
| 04.2014 | 62 | 0.23 % | 44,550,169 JPY | 0.10 % |
| 05.2014 | 91 | 0.34 % | 65,263,988 JPY | 0.15 % |
| 06.2014 | 130 | 0.49 % | 99,170,974 JPY | 0.22 % |
| 07.2014 | 92 | 0.34 % | 76,104,100 JPY | 0.17 % |
| 08.2014 | 67 | 0.25 % | 58,010,524 JPY | 0.13 % |
| 09.2014 | 144 | 0.54 % | 129,730,838 JPY | 0.29 % |
| 10.2014 | 92 | 0.34 % | 78,232,888 JPY | 0.18 % |
| 11.2014 | 112 | 0.42 % | 96,689,569 JPY | 0.22 % |
| 12.2014 | 167 | 0.63 % | 167,072,921 JPY | 0.38 % |
| 01.2015 | 117 | 0.44 % | 101,746,181 JPY | 0.23 % |
| 02.2015 | 198 | 0.74 % | 193,339,138 JPY | 0.43 % |
| 03.2015 | 228 | 0.85 % | 214,861,844 JPY | 0.48 % |
| 04.2015 | 94 | 0.35 % | 84,724,957 JPY | 0.19 % |
| 05.2015 | 174 | 0.65 % | 175,151,062 JPY | 0.39 % |
| 06.2015 | 184 | 0.69 % | 196,910,693 JPY | 0.44 % |
| 07.2015 | 131 | 0.49 % | 150,794,107 JPY | 0.34 % |
| 08.2015 | 179 | 0.67 % | 212,439,417 JPY | 0.48 % |
| 09.2015 | 238 | 0.89 % | 314,742,115 JPY | 0.71 % |
| 10.2015 | 170 | 0.64 % | 226,327,048 JPY | 0.51 % |
| 11.2015 | 395 | 1.48 % | 522,115,906 JPY | 1.17 % |
| 12.2015 | 901 | 3.38 % | 1,200,627,927 JPY | 2.70 % |
| 01.2016 | 838 | 3.14 % | 1,245,546,743 JPY | 2.80 % |
| 02.2016 | 1,218 | 4.57 % | 1,872,685,471 JPY | 4.21 % |
| 03.2016 | 1,878 | 7.04 % | 2,869,719,592 JPY | 6.45 % |
| 04.2016 | 924 | 3.46 % | 1,547,160,592 JPY | 3.48 % |
| 05.2016 | 1,280 | 4.80 % | 2,051,105,195 JPY | 4.61 % |
| 06.2016 | 1,478 | 5.54 % | 2,615,919,654 JPY | 5.88 % |
| 07.2016 | 1,358 | 5.09 % | 2,355,654,052 JPY | 5.29 % |
| 08.2016 | 1,600 | 6.00 % | 2,842,621,777 JPY | 6.39 % |
| 09.2016 | 2,107 | 7.90 % | 3,988,813,355 JPY | 8.97 % |
| 10.2016 | 1,347 | 5.05 % | 2,566,757,214 JPY | 5.77 % |
| 11.2016 | 2,031 | 7.61 % | 3,736,999,719 JPY | 8.40 % |
| 12.2016 | 764 | 2.86 % | 1,396,196,984 JPY | 3.14 % |
| 01.2017 | 627 | 2.35 % | 1,213,889,059 JPY | 2.73 % |
| 02.2017 | 760 | 2.85 % | 1,504,173,061 JPY | 3.38 % |
| 03.2017 | 1,133 | 4.25 % | 2,207,457,269 JPY | 4.96 % |
| 04.2017 | 446 | 1.67 % | 895,228,974 JPY | 2.01 % |
| 05.2017 | 510 | 1.91 % | 1,063,039,045 JPY | 2.39 % |
| 06.2017 | 563 | 2.11 % | 1,157,096,479 JPY | 2.60 % |
| 07.2017 | 298 | 1.12 % | 597,999,410 JPY | 1.34 % |
| 08.2017 | 290 | 1.09 % | 640,698,741 JPY | 1.44 % |
| 09.2017 | 324 | 1.21 % | 723,082,915 JPY | 1.63 % |
| 10.2017 | 158 | 0.59 % | 358,978,739 JPY | 0.81 % |
| 11.2017 | 71 | 0.27 % | 183,411,486 JPY | 0.41 % |
| 12.2017 | 0 | 0.00 % | 0 JPY | 0.00 % |
| 01.2018 | 0 | 0.00 % | 0 JPY | 0.00 % |
| 02.2018 | 0 | 0.00 % | 0 JPY | 0.00 % |
| 03.2018 | 0 | 0.00 % | 0 JPY | 0.00 % |
| 04.2018 | 0 | 0.00 % | 0 JPY | 0.00 % |
| 05.2018 | 0 | 0.00 % | 0 JPY | 0.00 % |
| 06.2018 | 0 | 0.00 % | 0 JPY | 0.00 % |
| 07.2018 | 0 | 0.00 % | 0 JPY | 0.00 % |
| 08.2018 | 0 | 0.00 % | 0 JPY | 0.00 % |
| 09.2018 | 0 | 0.00 % | 0 JPY | 0.00 % |
| 10.2018 | 0 | 0.00 % | 0 JPY | 0.00 % |
| Total | 26,679 | 100.00 % | 44,488,368,821 JPY | 100.00 % |

Distribution by Contract End Month

| Maturity Month | Number of Loans | Percentage of Loans | Outstanding Discounted Principal Balance | Percentage of Balance |
|----------------|-----------------|---------------------|--|-----------------------|
| 11.2018 | 449 | 1.68 % | 299,662,991 JPY | 0.67 % |
| 12.2018 | 725 | 2.72 % | 702,080,913 JPY | 1.58 % |
| 01.2019 | 466 | 1.75 % | 512,468,024 JPY | 1.15 % |
| 02.2019 | 650 | 2.44 % | 717,269,025 JPY | 1.61 % |
| 03.2019 | 1,059 | 3.97 % | 1,271,956,555 JPY | 2.86 % |
| 04.2019 | 487 | 1.83 % | 706,977,888 JPY | 1.59 % |
| 05.2019 | 644 | 2.41 % | 888,064,019 JPY | 2.00 % |
| 06.2019 | 855 | 3.20 % | 1,320,592,036 JPY | 2.97 % |
| 07.2019 | 632 | 2.37 % | 966,658,392 JPY | 2.17 % |
| 08.2019 | 672 | 2.52 % | 1,044,585,160 JPY | 2.35 % |
| 09.2019 | 1,005 | 3.77 % | 1,710,460,124 JPY | 3.84 % |
| 10.2019 | 665 | 2.49 % | 1,085,661,051 JPY | 2.44 % |
| 11.2019 | 888 | 3.33 % | 1,625,560,766 JPY | 3.65 % |
| 12.2019 | 491 | 1.84 % | 796,340,640 JPY | 1.79 % |
| 01.2020 | 400 | 1.50 % | 626,894,477 JPY | 1.41 % |
| 02.2020 | 560 | 2.10 % | 870,268,106 JPY | 1.96 % |
| 03.2020 | 761 | 2.85 % | 1,230,071,665 JPY | 2.76 % |
| 04.2020 | 270 | 1.01 % | 483,295,547 JPY | 1.09 % |
| 05.2020 | 389 | 1.46 % | 643,120,732 JPY | 1.45 % |
| 06.2020 | 426 | 1.60 % | 714,743,337 JPY | 1.61 % |
| 07.2020 | 297 | 1.11 % | 432,984,665 JPY | 0.97 % |
| 08.2020 | 379 | 1.42 % | 629,741,864 JPY | 1.42 % |
| 09.2020 | 430 | 1.61 % | 704,577,431 JPY | 1.58 % |
| 10.2020 | 259 | 0.97 % | 404,832,040 JPY | 0.91 % |
| 11.2020 | 301 | 1.13 % | 477,010,245 JPY | 1.07 % |
| 12.2020 | 390 | 1.46 % | 566,558,742 JPY | 1.27 % |
| 01.2021 | 494 | 1.85 % | 773,554,765 JPY | 1.74 % |
| 02.2021 | 751 | 2.81 % | 1,242,585,913 JPY | 2.79 % |
| 03.2021 | 1,064 | 3.99 % | 1,723,435,838 JPY | 3.87 % |
| 04.2021 | 511 | 1.92 % | 849,836,907 JPY | 1.91 % |
| 05.2021 | 709 | 2.66 % | 1,152,476,601 JPY | 2.59 % |
| 06.2021 | 757 | 2.84 % | 1,355,764,840 JPY | 3.05 % |
| 07.2021 | 769 | 2.88 % | 1,377,637,388 JPY | 3.10 % |
| 08.2021 | 877 | 3.29 % | 1,625,638,739 JPY | 3.65 % |
| 09.2021 | 1,183 | 4.43 % | 2,260,995,136 JPY | 5.08 % |
| 10.2021 | 735 | 2.75 % | 1,473,223,810 JPY | 3.31 % |
| 11.2021 | 986 | 3.70 % | 2,047,111,702 JPY | 4.60 % |
| 12.2021 | 349 | 1.31 % | 714,327,368 JPY | 1.61 % |
| 01.2022 | 305 | 1.14 % | 672,913,043 JPY | 1.51 % |
| 02.2022 | 367 | 1.38 % | 794,469,743 JPY | 1.79 % |
| 03.2022 | 570 | 2.14 % | 1,180,451,997 JPY | 2.65 % |
| 04.2022 | 251 | 0.94 % | 504,577,873 JPY | 1.13 % |
| 05.2022 | 286 | 1.07 % | 612,513,417 JPY | 1.38 % |
| 06.2022 | 290 | 1.09 % | 644,526,861 JPY | 1.45 % |
| 07.2022 | 173 | 0.65 % | 386,266,666 JPY | 0.87 % |
| 08.2022 | 193 | 0.72 % | 436,027,484 JPY | 0.98 % |
| 09.2022 | 182 | 0.68 % | 441,928,436 JPY | 0.99 % |
| 10.2022 | 97 | 0.36 % | 235,195,180 JPY | 0.53 % |
| 11.2022 | 56 | 0.21 % | 130,548,924 JPY | 0.29 % |
| 12.2022 | 26 | 0.10 % | 58,253,470 JPY | 0.13 % |
| 01.2023 | 14 | 0.05 % | 29,635,420 JPY | 0.07 % |
| 02.2023 | 19 | 0.07 % | 45,963,834 JPY | 0.10 % |
| 03.2023 | 22 | 0.08 % | 45,739,319 JPY | 0.10 % |
| 04.2023 | 10 | 0.04 % | 21,628,586 JPY | 0.05 % |
| 05.2023 | 19 | 0.07 % | 52,009,673 JPY | 0.12 % |
| 06.2023 | 15 | 0.06 % | 31,295,584 JPY | 0.07 % |
| 07.2023 | 6 | 0.02 % | 14,746,505 JPY | 0.03 % |
| 08.2023 | 7 | 0.03 % | 19,294,769 JPY | 0.04 % |
| 09.2023 | 13 | 0.05 % | 33,856,857 JPY | 0.08 % |
| 10.2023 | 10 | 0.04 % | 24,729,154 JPY | 0.06 % |
| 11.2023 | 1 | 0.00 % | 2,108,249 JPY | 0.00 % |
| 12.2023 | 2 | 0.01 % | 8,259,746 JPY | 0.02 % |
| 01.2024 | 1 | 0.00 % | 2,502,272 JPY | 0.01 % |
| 02.2024 | 2 | 0.01 % | 5,822,621 JPY | 0.01 % |
| 03.2024 | 1 | 0.00 % | 4,149,584 JPY | 0.01 % |
| 04.2024 | 1 | 0.00 % | 3,007,622 JPY | 0.01 % |
| 05.2024 | 0 | 0.00 % | 0 JPY | 0.00 % |
| 06.2024 | 0 | 0.00 % | 0 JPY | 0.00 % |
| 07.2024 | 1 | 0.00 % | 3,909,088 JPY | 0.01 % |
| 08.2024 | 0 | 0.00 % | 0 JPY | 0.00 % |
| 09.2024 | 1 | 0.00 % | 2,588,921 JPY | 0.01 % |
| 10.2024 | 3 | 0.01 % | 10,422,481 JPY | 0.02 % |
| Total | 26,679 | 100.00 % | 44,488,368,821 JPY | 100.00 % |

Distribution by Monthly Payment

| Monthly Payment | Number of Loans | Percentage of Loans | Outstanding Discounted Principal Balance | Percentage of Balance |
|---------------------------|-----------------|---------------------|--|-----------------------|
| <= 10,000 JPY | 1,330 | 4.99 % | 1,436,305,888 JPY | 3.23 % |
| 10,001 JPY - 20,000 JPY | 5,064 | 18.98 % | 5,945,676,494 JPY | 13.36 % |
| 20,001 JPY - 30,000 JPY | 7,236 | 27.12 % | 9,878,449,386 JPY | 22.20 % |
| 30,001 JPY - 40,000 JPY | 5,412 | 20.29 % | 8,961,938,539 JPY | 20.14 % |
| 40,001 JPY - 50,000 JPY | 3,017 | 11.31 % | 5,831,255,757 JPY | 13.11 % |
| 50,001 JPY - 60,000 JPY | 1,729 | 6.48 % | 3,761,606,305 JPY | 8.46 % |
| 60,001 JPY - 70,000 JPY | 930 | 3.49 % | 2,292,269,353 JPY | 5.15 % |
| 70,001 JPY - 80,000 JPY | 522 | 1.96 % | 1,416,524,547 JPY | 3.18 % |
| 80,001 JPY - 90,000 JPY | 380 | 1.42 % | 1,106,884,246 JPY | 2.49 % |
| 90,001 JPY - 100,000 JPY | 305 | 1.14 % | 958,900,096 JPY | 2.16 % |
| 100,001 JPY - 110,000 JPY | 204 | 0.76 % | 662,808,572 JPY | 1.49 % |
| 110,001 JPY - 120,000 JPY | 134 | 0.50 % | 516,736,592 JPY | 1.16 % |
| 120,001 JPY - 130,000 JPY | 110 | 0.41 % | 430,585,020 JPY | 0.97 % |
| 130,001 JPY - 140,000 JPY | 67 | 0.25 % | 278,443,561 JPY | 0.63 % |
| 140,001 JPY - 150,000 JPY | 52 | 0.19 % | 234,008,610 JPY | 0.53 % |
| >= 150,001 JPY | 187 | 0.70 % | 775,975,855 JPY | 1.74 % |
| Total | 26,679 | 100.00 % | 44,488,368,821 JPY | 100.00 % |

Distribution by Bonus Payment

| Bonus Payment | Number of Loans | Percentage of Loans | Outstanding Discounted Principal Balance | Percentage of Balance |
|---------------------------|-----------------|---------------------|--|-----------------------|
| No Bonus Payment | 15,878 | 59.51 % | 25,898,796,663 JPY | 58.21 % |
| 1 JPY - 25,000 JPY | 252 | 0.94 % | 303,220,960 JPY | 0.68 % |
| 25,001 JPY - 50,000 JPY | 2,706 | 10.14 % | 3,737,472,687 JPY | 8.40 % |
| 50,001 JPY - 75,000 JPY | 952 | 3.57 % | 1,472,333,523 JPY | 3.31 % |
| 75,001 JPY - 100,000 JPY | 3,749 | 14.05 % | 6,319,347,035 JPY | 14.20 % |
| 100,001 JPY - 125,000 JPY | 463 | 1.74 % | 822,698,168 JPY | 1.85 % |
| 125,001 JPY - 150,000 JPY | 1,460 | 5.47 % | 2,963,460,177 JPY | 6.66 % |
| 150,001 JPY - 175,000 JPY | 162 | 0.61 % | 326,425,450 JPY | 0.73 % |
| 175,001 JPY - 200,000 JPY | 649 | 2.43 % | 1,513,444,090 JPY | 3.40 % |
| 200,001 JPY - 225,000 JPY | 41 | 0.15 % | 87,214,503 JPY | 0.20 % |
| 225,001 JPY - 250,000 JPY | 168 | 0.63 % | 430,832,754 JPY | 0.97 % |
| 250,001 JPY - 275,000 JPY | 13 | 0.05 % | 38,286,143 JPY | 0.09 % |
| 275,001 JPY - 300,000 JPY | 119 | 0.45 % | 353,464,570 JPY | 0.79 % |
| 300,001 JPY - 325,000 JPY | 7 | 0.03 % | 20,373,545 JPY | 0.05 % |
| 325,001 JPY - 350,000 JPY | 21 | 0.08 % | 65,207,695 JPY | 0.15 % |
| 350,001 JPY - 375,000 JPY | 4 | 0.01 % | 17,236,987 JPY | 0.04 % |
| 375,001 JPY - 400,000 JPY | 15 | 0.06 % | 62,101,328 JPY | 0.14 % |
| 400,001 JPY - 425,000 JPY | 0 | 0.00 % | 0 JPY | 0.00 % |
| 425,001 JPY - 450,000 JPY | 3 | 0.01 % | 10,002,412 JPY | 0.02 % |
| 450,001 JPY - 475,000 JPY | 0 | 0.00 % | 0 JPY | 0.00 % |
| 475,001 JPY - 500,000 JPY | 15 | 0.06 % | 38,431,878 JPY | 0.09 % |
| 500,001 JPY or more | 2 | 0.01 % | 8,018,253 JPY | 0.02 % |
| Total | 26,679 | 100.00 % | 44,488,368,821 JPY | 100.00 % |

Distribution by Motor Type

| Motor Type | Number of Loans | Percentage of Loans | Outstanding Discounted Principal Balance | Percentage of Balance |
|--------------|-----------------|---------------------|--|-----------------------|
| EA 189 | 0 | 0.00 % | 0 JPY | 0.00 % |
| Other | 26,679 | 100.00 % | 44,488,368,821 JPY | 100.00 % |
| Total | 26,679 | 100.00 % | 44,488,368,821 JPY | 100.00 % |

Disclaimer

This presentation contains forward-looking statements and information on the business development of the Volkswagen Group. These statements may be spoken or written and can be recognized by terms such as "expects", "anticipates", "intends", "plans", "believes", "seeks", "estimates", "will", or words with similar meaning. These statements are based on assumptions relating to the development of the economies of individual countries, and in particular of the automotive industry, which we have made on the basis of the information available to us and which we consider to be realistic at the time of going to press. The estimates given involve a degree of risk, and the actual developments may differ from those forecast.

Consequently, any unexpected fall in demand or economic stagnation in our key sales markets, such as in Western Europe (and especially Germany) or in the USA, Brazil or China, will have a corresponding impact on the development of our business. The same applies in the event of a significant shift in current exchange rates relative to the US dollar, sterling, yen, Brazilian real, Chinese renminbi and Czech koruna.

If any of these or other risks occur, or if the assumptions underlying any of these statements prove incorrect, the actual results may significantly differ from those expressed or implied by such statements.

We do not update forward-looking statements retrospectively. Such statements are valid on the date of publication and can be superceded.

This information does not constitute an offer to exchange or sell or an offer to exchange or buy any securities.