

**Deal Name:** Driver Japan six

**Originator:** Volkswagen Financial Services Japan Ltd.  
Gotenyama Trust Tower 17F  
7-35 Kitashinagawa 4-chome, Shinagawa-ku  
Tokyo 140-0001, Japan

**Reporting Entity:** Volkswagen Financial Services Japan Ltd.  
Treasury Dept.  
Gotenyama Trust Tower 17F  
7-35 Kitashinagawa 4-chome, Shinagawa-ku  
Tokyo 140-0001, Japan  
Tel No.: +81(0)3-5792-7261  
Fax No.: +81(0)3-3280-7365  
E-mail: vwfsjp.abs@vwfs.com

**Trustor of the First Trust:  
Servicer:** Volkswagen Financial Services Japan Ltd.

**Trustee of the First Trust:  
Trustee of the Second Trust:** Deutsche Trust Company Limited Japan  
Sanno Park Tower, 11-1,  
Nagatacho 2-chome, Chiyoda-ku,  
Tokyo, 100-6172, Japan  
Trust Business Administration Department  
Tel No.: +81(0)3-5156-5637  
Fax No.: +81(0)3-5156-5658  
E-mail: DB\_Trust\_Trust@list.db.com



## Contents

Page	Tables of Contents
1	<a href="#">Front Page</a>
2	<a href="#">Contents</a>
3	<a href="#">Deal Overview</a>
4	<a href="#">Deal Overview: Counterparties I</a>
5	<a href="#">Deal Overview: Counterparties II</a>
6	<a href="#">Information regarding the TBI and ABL to the Second Trust</a>
7	<a href="#">Pool Information</a>
8	<a href="#">Available Distribution</a>
9	<a href="#">Waterfall</a>
10	<a href="#">Credit Enhancement</a>
11	<a href="#">Cumulative Gross Loss Ratio &amp; Performance Trigger</a>
12	<a href="#">Cumulative Gross Loss Ratio &amp; Performance Trigger (Chart)</a>
13	<a href="#">Default &amp; Delinquencies</a>
14	<a href="#">Run Out Schedule (Previous)</a>
15	<a href="#">Run Out Schedule</a>
16	<a href="#">Expected Amortization to the Second Trust</a>
17	<a href="#">Sub-Servicer</a>
18	<a href="#">Brand</a>
19	<a href="#">New and Used</a>
20	<a href="#">Product Type</a>
21	<a href="#">RV</a>
22	<a href="#">Brand New and Used</a>
23	<a href="#">Customer Type</a>
24	<a href="#">Outstanding Discounted Principal Balance</a>
25	<a href="#">Original Principal Amount</a>
26	<a href="#">Interest Rate paid by the Obligor</a>
27	<a href="#">Original Term</a>
28	<a href="#">Remaining Term</a>
29	<a href="#">Seasoning</a>
30	<a href="#">Type of Car</a>
31	<a href="#">Brand and Model</a>
32	<a href="#">Geographic Dist. by Prefecture</a>
33	<a href="#">Obligor Concentration</a>
34	<a href="#">Contract Start Month</a>
35	<a href="#">Contract End Month</a>
36	<a href="#">Monthly payment</a>
37	<a href="#">Bonus payment</a>
38	<a href="#">Mortor Type</a>

### Deal Overview

<b>Cut Off Date:</b>	2017/02/10		
<b>Trust Commencement Date:</b>	2017/02/23	<b>Legal Maturity of the First Trust:</b>	2025/06/27
<b>Monthly Period:</b>	2018/06/11	to	2018/07/10
<b>Reporting Date:</b>	2018/07/18		
<b>Reporting Frequency:</b>	monthly		
<b>Period No.:</b>	17		
<b>Remittance Date:</b>	2018/07/24		
<b>Advance Payment Date:</b>	2018/07/24		
<b>Cash Adjustment Date:</b>	2018/07/24		
<b>Additional Entrustment Date:</b>	2018/07/26		
<b>Trust Calculation Date:</b>	2018/07/26		
<b>Trust Calculation Period:</b>	2018/06/27	to	2018/07/26
<b>First Trust Payment Date:</b>	2018/07/27		
<b>Second Trust Payment Date:</b>	2018/07/30		
<b>Interest Calculation Period:</b>	2018/06/29	to	2018/07/30
<b>Next Reporting Date:</b>	2018/08/17		

### Pool information at the Initial Cut off Date

	Number of Contracts	Outstanding Discounted Principal Balance	Outstanding Nominal Balance
Outstanding Pool	30,757	64,171,706,472 JPY	67,028,993,300 JPY

Credit Type	Percentage of Loans	Outstanding Discounted Principal Balance	Percentage of Balance
Balloon	76.13 %	55,443,642,000 JPY	86.40 %
Equal Instalment Loan	23.87 %	8,728,064,472 JPY	13.60 %
<b>Total</b>	<b>100.00 %</b>	<b>64,171,706,472 JPY</b>	<b>100.00 %</b>

Type of Car	Percentage of Loans	Outstanding Discounted Principal Balance	Percentage of Balance
New	66.66 %	49,506,381,305 JPY	77.15 %
Used	33.34 %	14,665,325,167 JPY	22.85 %
<b>Total</b>	<b>100.00 %</b>	<b>64,171,706,472 JPY</b>	<b>100.00 %</b>

## Deal Overview: Counterparties I

### Joint Lead Managers:

**Shinsei Securities Co., Ltd.**

Nihonbashi Muromachi Nomura Building, 4-3,  
 Nihonbashi-muromachi 2-chome,  
 Chuo-ku,  
 Tokyo 103-0022, Japan

**BNP Paribas Securities (Japan) Limited**

GranTokyo North Tower, 9-1,  
 Marunouchi 1-chome,  
 Chiyoda-ku,  
 Tokyo 100-6740, Japan

### Trust Management Account Bank:

**MUFG Bank, Ltd.**

4-2 Toranomom 1-chome,  
 Minato-ku  
 Tokyo 105-0001, Japan

Rating								
Moody's			Fitch			R&I		
Long Term	Short Term	Outlook	Long Term	Short Term	Outlook	Long Term	Short Term	Outlook
n.a.	n.a.	n.a.	n.a.	n.a.	n.a.	n.a.	n.a.	n.a.
n.a.	n.a.	n.a.	n.a.	n.a.	n.a.	n.a.	n.a.	n.a.
A1	P-1	Stable	A	F1	Stable	AA-	a-1+	Stable

### Originator:

### Trustor of the First Trust:

### Servicer:

**Volkswagen Financial Services Japan Ltd.**

Gotenyama Trust Tower 17F  
 7-35 Kitashinagawa 4-chome, Shinagawa-ku  
 Tokyo 140-0001, Japan

### Trustee of the First Trust:

### Trustee of the Second Trust:

**Deutsche Trust Company Limited Japan**

Attn.: Driver Japan Six  
 Trust Business Administration Department

### ABL Lender to the First Trust:

### Trustor of the Second Trust:

Shinsei Securities Co., Ltd.

### Seller of the Trust Beneficial

### Interest of the Second Trust

Shinsei Securities Co., Ltd.  
 BNP Paribas Securities (Japan) Limited

**Deal Overview: Counterparties II**

**Rating Agencies:**

**Moody's SF Japan K.K.**

Attn.: Driver Japan six  
 Structure Finance Group Monitoring Division  
 5-1 Atago 2-chome, Minato-ku  
 Tokyo 105-6220, Japan  
 E-mail: monitor.msfi@moodys.com

**Fitch Ratings Japan Limited**

Attn.: Driver Japan six  
 Structured Finance  
 Kojimachi Crystal City East Wing 3rd Floor,  
 4-8 Kōjimachi, Chiyoda-ku,  
 Tokyo 102-0083, Japan  
 E-mail: tokyo.surveillance@fitchratings.com

**Rating and Investment Information, Inc.**

Attn.: Monitoring Group Department:  
 Structured Finance Department  
 TERRACE SQUARE, 3-22,  
 Kanda Nishikicho, Chiyoda-ku,  
 Tokyo 101-0054, Japan  
 E-mail: sfmonitor@r-i.co.jp

**Rating of VW**

**Volkswagen Financial Services AG**

**Volkswagen AG**

Rating								
Moody's			Fitch			R&I		
Short Term	Long Term	Outlook	Short Term	Long Term	Outlook	Short Term	Long Term	Outlook
P-2	A3	Stable	n.a.	n.a.	n.a.	n.a.	n.a.	n.a.
P-2	A3	Stable	F2	BBB+	Stable	n.a.	n.a.	n.a.

**Information regarding Trust Beneficial Interest of the Second Trust & Asset Backed Loan to the Second Trust**

**Rating Details**

**Rating at Issue Date**

	<u>TBI</u>	<u>ABL</u>
Moody's	Aaa(sf)	Aaa(sf)
Fitch	AAAsf	AAAsf
R&I	AAA	AAA

**Current Rating**

	<u>TBI</u>	<u>ABL</u>
Moody's	Aaa(sf)	Aaa(sf)
Fitch	AAAsf	AAAsf
R&I	AAA	AAA

**Information on TBI & ABL**

	<u>TBI</u>	<u>ABL</u>
Initial Balance	39,200,000,000 JPY	20,800,000,000 JPY
Expected Maturity Date	2021/06/28	2021/06/28
Legal Maturity of the Second Trust	2025/06/30	2025/06/30
Payment Dates	28th	28th
Business Day Convention	Modified Following	Modified Following
Listing	None	—

**Information on Interest**

	<u>TBI</u>	<u>ABL</u>
Fixed/ Floating	Fixed	Fixed
Current Coupon	0.19%	0.19%
Day Count Convention	30/360	30/360

**Selling Restriction**

The holders of the Beneficial Interest and the ABL Lenders\* are prohibited from dividing, assigning, pledging or creating any other security interest over any of the Beneficial Interest and the Asset Backed Loans without the prior written approval of the Trustee of the Second Trust.

(\*)The holders of the Beneficial Interest and the ABL Lenders are limited to specified investors (*tokutei toushika*) as defined under Paragraph 31 of Article 2 of the Financial Instruments and Exchange Act (Law no.25 of 1948 as amended).

**Clean-Up Call**

VWFS Japan as the Trustor of the First Trust has a right at its option to exercise a clean-up call to repurchase of all, but not part, of the outstanding Auto Loan Receivables from the Trustee of the First Trust on any Trust Calculation Date, the Discounted Principal Balance of all outstanding Auto Loan Receivables is expected to be less than ten percent (10%) of the Discounted Principal Balance of the Initial Auto Loan Receivables as of the Initial Cut-off Date after the distribution pursuant to Article 18.1 of the First Trust Agreement on the immediately following First Trust Payment Date.

**Pool Information**
**Pool Balance on Initial Cut-Off Date**

Status	Number of Contracts	Outstanding Discounted Principal Balance
Normal	30,757	64,171,706,472 JPY
Cancellation	0	0 JPY
Early Termination	0	0 JPY
Defaulted Receivables	0	0 JPY
Matured	0	0 JPY
Refinance Option	0	0 JPY
Repurchase	0	0 JPY
<b>Total</b>	<b>30,757</b>	<b>64,171,706,472 JPY</b>

**Pool Balance before entrustment of Additional Auto Loan Receivables**

Status	Number of Contracts on previous EoP	Outstanding Discounted Principal Balance on previous EoP	Number of Contracts "as Collections" during the relevant Monthly Period*	Outstanding Discounted Principal Balance "as Collections" during the relevant Monthly Period*	Number of Contracts EoP before entrustment of Additional Auto Loan Receivables	Outstanding Discounted Principal Balance EoP before entrustment of Additional Auto Loan Receivables
Normal	31,379	56,165,314,785 JPY	30,348	1,495,409,475 JPY	30,348	53,472,357,158 JPY
Cancellation	0	0 JPY	0	0 JPY	0	0 JPY
Early Termination	0	0 JPY	353	613,975,422 JPY	0	0 JPY
Defaulted Receivables	0	0 JPY	6	14,392,117 JPY	0	0 JPY
Matured	0	0 JPY	535	377,708,246 JPY	0	0 JPY
Refinance Option	0	0 JPY	137	191,472,367 JPY	0	0 JPY
Repurchase	0	0 JPY	0	0 JPY	0	0 JPY
<b>Total</b>	<b>31,379</b>	<b>56,165,314,785 JPY</b>	<b>31,379</b>	<b>2,692,957,627 JPY</b>	<b>30,348</b>	<b>53,472,357,158 JPY</b>

**Pool Balance after entrustment of Additional Auto Loan Receivables**

Status	Number of Contracts EoP before entrustment of Additional Auto Loan Receivables	Outstanding Discounted Principal Balance EoP before entrustment of Additional Auto Loan Receivables	Number of Contracts of Additional Auto Loan Receivables	Outstanding Discounted Principal Balance of Additional Auto Loan Receivables	Number of Contracts EoP after entrustment of Additional Auto Loan Receivables	Outstanding Discounted Principal Balance EoP after entrustment of Additional Auto Loan Receivables
Normal	30,348	53,472,357,158 JPY	0	0 JPY	30,348	53,472,357,158 JPY
Cancellation	0	0 JPY	0	0 JPY	0	0 JPY
Early Termination	0	0 JPY	0	0 JPY	0	0 JPY
Defaulted Receivables	0	0 JPY	0	0 JPY	0	0 JPY
Matured	0	0 JPY	0	0 JPY	0	0 JPY
Refinance Option	0	0 JPY	0	0 JPY	0	0 JPY
Repurchase	0	0 JPY	0	0 JPY	0	0 JPY
<b>Total</b>	<b>30,348</b>	<b>53,472,357,158 JPY</b>	<b>0</b>	<b>0 JPY</b>	<b>30,348</b>	<b>53,472,357,158 JPY</b>

**Limits on Eligibility Criteria**

Status Limits on Eligibility Criteria (v) (including Additional Entrustment)	Current Exposure in %	Limits in % of the aggregate Discounted Principal Balance of the Auto Loan Receivables outstanding	Status
(i) on Used Purchased Vehicle	22.44 %	35 %	-*
(ii) on Non-VW Vehicles	0.02 %	5 %	-*
(iii) on Balloon Payment	46.63 %	50 %	-*

(\*) not applicable since the Revolving Period ended

### Outstanding Balances

**Monthly Period:** from 2018/06/11 to 2018/07/10  
**Reporting Date:** 2018/07/18  
**Trust Calculation Date:** 2018/07/26

### Outstanding Balances

	Number of Contracts	Aggregate Amount of the Discounted Principal Balance	Aggregate Amount of the Nominal Balance
Balance on the previous EoP	31,379	56,165,314,785 JPY	58,117,017,200 JPY
Balance after counting on the Collections during the relevant Monthly Period	30,348	53,472,357,158 JPY	55,307,452,300 JPY
Balance of Additional Auto Loan Receivables	0	0 JPY	0 JPY
<b>Aggregate Amount of Auto Loan Receivables</b>	<b>30,348</b>	<b>53,472,357,158 JPY</b>	<b>55,307,452,300 JPY</b>

### Collections

	Number of Contracts	Aggregate Amount of the Discounted Principal Balance	Aggregate Amount of the Nominal Balance
Collections: Amortization of current contracts	30,348	1,495,409,475 JPY	1,593,517,500 JPY
Collections: Cancellation	0	0 JPY	0 JPY
Collections: Early Termination	353	613,975,422 JPY	614,749,664 JPY
Collections: Defaulted Receivables	6	14,392,117 JPY	14,426,646 JPY
Collections: Matured	535	377,708,246 JPY	378,251,500 JPY
Collections: Refinance Option	137	191,472,367 JPY	191,760,000 JPY
Collections: Repurchase	0	0 JPY	0 JPY
<b>Sum</b>	<b>31,379</b>	<b>2,692,957,627 JPY</b>	<b>2,792,705,310 JPY</b>

### Available Distribution Amount

	Number of Contracts	Aggregate Amount of the Nominal Balance
(a) the Collections for the Monthly Period with respect to such Trust Calculation Date	31,379	2,792,705,310 JPY
(b) drawings from the Cash Collateral Ledger in accordance with Article 18.3 of the First Trust Agreement	0	0 JPY
(c) net investment earnings from Eligible Investments	0	0 JPY
(d) net proceeds from the sale or disposal of the Trust Assets of the First Trust	0	0 JPY
(e) any amount which is carried over from the immediately preceding Trust Calculation Date	0	0 JPY
<b>Sum</b>	<b>31,379</b>	<b>2,792,705,310 JPY</b>



## Waterfall

There is no distinction between principal and interest, and all collections go through a single priority of payments			
		Payment	Remaining Amount
Available Distribution Amount	plus	2,792,705,310 JPY	2,792,705,310 JPY
(a) an amount necessary for the payment of all taxes and public charges to be paid to the relevant public authority by the immediately following First Trust Payment Date.	less	0 JPY	2,792,705,310 JPY
(b) an amount necessary for the payment of all Fees for the Trustee of the First Trust to be paid to the Trustee of the First Trust by the immediately following First Trust Payment Date.	less	505,487 JPY	2,792,199,823 JPY
(c) an amount necessary for the payment of the Servicing Fee to be paid to the Servicer by the immediately following First Trust Payment Date.	less	50,548,782 JPY	2,741,651,041 JPY
(d) an amount necessary for the payment of the Trust Expenses of the First Trust as provided in Article 23.1 (including the Rating Fees, Costs of the Second Trust and those fees not otherwise covered by (b) or (c) above) to be paid to the relevant party by the immediately following First Trust Payment Date (including any amounts advanced by the Trustee of the First Trust pursuant to Article23.3)	less	520,931 JPY	2,741,130,110 JPY
(e) an amount necessary for the payment of overdue and unpaid interest on the Asset Backed Loans to the First Trust (if any) to be paid to the Trustee of the Second Trust by the immediately following First Trust Payment Date.	less	0 JPY	2,741,130,110 JPY
(f) an amount necessary for the payment to the Trustee of the Second Trust of interest on the Asset Backed Loan to the First Trust accruing during the relevant Interest Calculation Period	less	7,982,167 JPY	2,733,147,943 JPY
(g) an amount necessary to top up the balance thereof until it is equal to the Cash Collateral Ledger Target Balance	less	0 JPY	2,733,147,943 JPY
(h) (i) prior to the expiration of the Revolving Period: an amount necessary for the redemption of any Additional Senior Beneficial Interest;	less	2,733,147,943 JPY	0 JPY
(ii) following the expiration of the Revolving Period and prior to the occurrence of an Early Amortization Event, an amount necessary for the payment to the Trustee of the Second Trust of the Asset Backed Loan Principal Payment Amount for the relevant First Trust Payment Date.			
(iii) following the occurrence of the Early Amortization Event, an amount necessary for the payment to the Trustee of the Second Trust of the remaining principal balance of the Asset Backed Loan to the First Trust.			
(i) an amount necessary for the payment to the Trustee of the First Trust of any Indemnified Amounts which are not compensated by the Trustor of the First Trust	less	0 JPY	0 JPY
(j) an amount necessary for the payment to the Subordinated Beneficiary of the Subordinated Beneficial Principal Payment Amount for the relevant First Trust Payment Date.	less	0 JPY	0 JPY
(k) (i) prior to the expiration of the Revolving Period, then (x) if a transfer is made under (j) above, such remaining amount will be transferred to the Expenses Distribution Ledger for payment to the Subordinated Beneficiary as a payment of earnings on the Subordinated Beneficial Interest, and such payment shall be made on the First Trust Payment Date immediately following such Trust Calculation Date or (y) if no transfer is made under (j) above, such remaining amount will be carried forward to the next Trust Calculation Date.	less	0 JPY	0 JPY
(ii) following the expiration of the Revolving Period and prior to the occurrence of an Early Amortization Event, then such remaining amount will be transferred to the Expenses Distribution Ledger for payment to the Subordinated Beneficiary as a payment of earnings on the Subordinated Beneficial Interest, and such payment shall be made on the First Trust Payment Date immediately following such Trust Calculation Date.			
(iii) following the occurrence of an Early Amortization Event, the remaining amount in the Trust Collection Ledger will be carried forward to the next Trust Calculation Date.			

## Credit Enhancement

### Subordinated Principal Balance as of the relevant First Trust Payment Date

	Percentage of Aggregate Discounted Principal Balance	Value
(i) the aggregate amount of the Discounted Principal Balance of all Auto Loan Receivables outstanding		53,472,357,158 JPY
(ii) Asset Backed Loan Principal Balance on the relevant First Trust Payment Date		47,680,539,692 JPY
Overcollateralization ( = (i) - (ii) )	10.83 %	5,791,817,466 JPY
Trust Collection Ledger which is carried over from the immediately preceding Trust Calculation Date	0.00 %	0 JPY
The amount in the Cash Collateral Ledger	0.65 %	345,000,000 JPY
Subordinated Principal Balance	11.48 %	6,136,817,466 JPY

### Trust Management Account (TMA)

	in JPY	+/-	in JPY (previous)
<b>Initial Balance on Cash Entrustment Date</b>	<b>345,000,000 JPY</b>		
<b>Outstanding Balance on First Trust Payment Date</b>	<b>345,000,000 JPY</b>	<b>0 JPY</b>	<b>345,000,000 JPY</b>
(a) Expenses Distribution Ledger	0 JPY	0 JPY	0 JPY
(b) Trust Collection Ledger	0 JPY	0 JPY	0 JPY
(c) Cash Collateral Ledger	345,000,000 JPY	0 JPY	345,000,000 JPY
<b>Cash Collateral Ledger Target Balance</b>	<b>345,000,000 JPY</b>		

### Calculation of Credit Enhancement

Driver Japan six's Credit Enhancement consists of the items listed above in the Subordinated Principal Balance as of the relevant date of determination (immediately following the First Trust Payment Date). The result provides an absolute value, which will be applied to the (amortized) Aggregate Discounted Principal Balance as of the end of the relevant date.

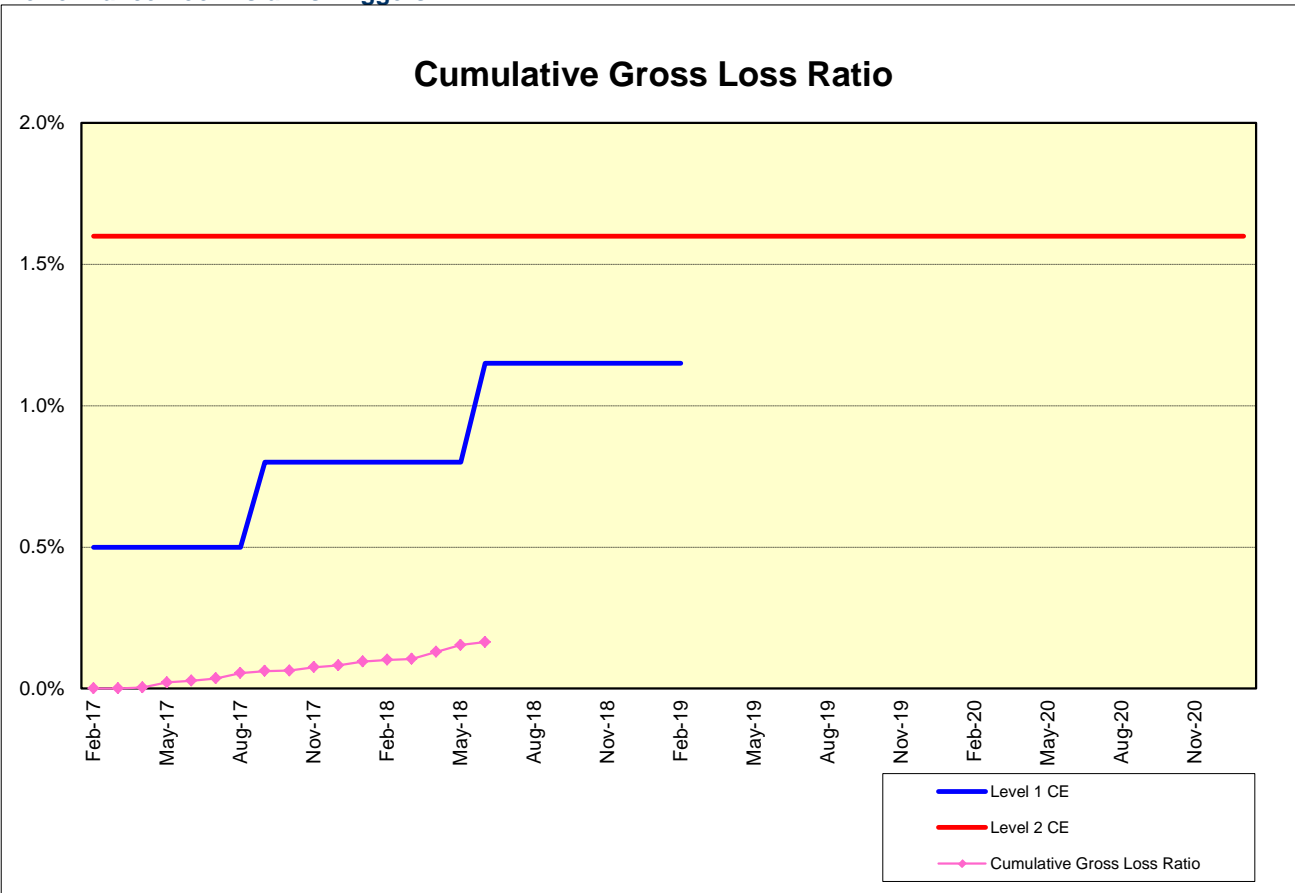
The transaction has a Revolving Period of 12 months until February 2018.

Asset Backed Loan Overcollateralization Percentage is (i) prior to the expiration of the Revolving Period, 8.5%, and (ii) following the expiration of the Revolving Period, 11.5%; provided, in each case no Credit Enhancement Increase Condition shall be in effect. After a Level 1 Credit Enhancement Increase Condition in effect, 17% and after a Level 2 Credit Enhancement Increase Condition is in effect, 100%.



**Cumulative Gross Loss & Cumulative Repurchased Receivables**

**Performance Pool vis-a-vis Triggers**



**Cumulative Repurchased Receivables**

	Number of Contracts	Repurchase Price
Beginning of Period	0	0 JPY
Repurchased Receivables	0	0 JPY
<b>End of Period</b>	<b>0</b>	<b>0 JPY</b>

### Defaulted and Delinquent Contracts

#### Information of Delinquencies and Defaults

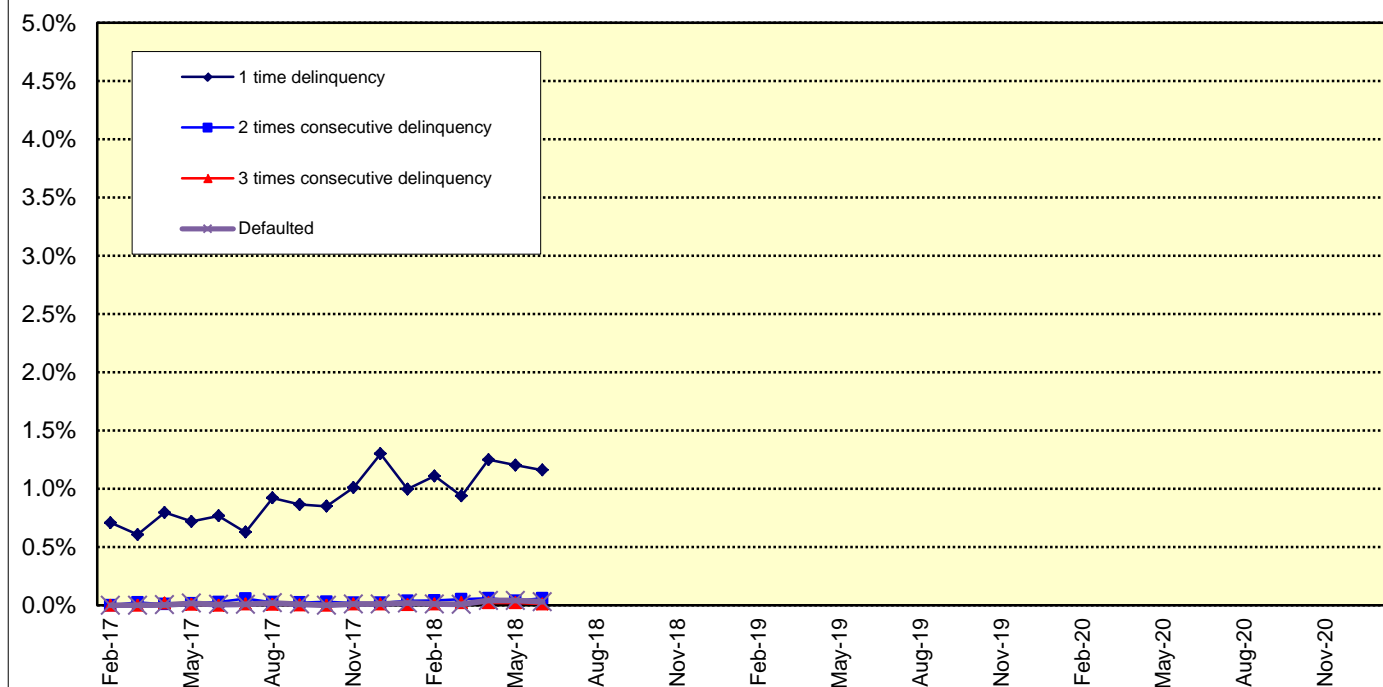
Current Reporting Period	Number of Contracts	Percentage of Contracts (*)	Outstanding Discounted Principal Balance	Percentage of Principal Balance (*)	Outstanding Nominal Balance	Percentage of Nominal Balance (*)
Delinquent	356	1.13 %	658,429,672 JPY	1.17 %	685,598,300 JPY	1.18 %
Default	6	0.02 %	14,392,117 JPY	0.03 %	11,606,646 JPY	0.02 %

(\*) Based on the previous EoP

#### Delinquency Profile (Information Purpose Only)

Days in Arrears	Number of Contracts	Percentage of Contracts	Outstanding Discounted Principal Balance	Percentage of Principal Balance	Outstanding Nominal Balance	Percentage of Nominal Balance
1	336	1.11 %	620,513,909 JPY	1.16 %	645,945,700 JPY	1.17 %
2	18	0.06 %	31,734,981 JPY	0.06 %	33,116,700 JPY	0.06 %
3	2	0.01 %	6,180,782 JPY	0.01 %	6,535,900 JPY	0.01 %
<b>Total</b>	<b>356</b>	<b>1.17 %</b>	<b>658,429,672 JPY</b>	<b>1.23 %</b>	<b>685,598,300 JPY</b>	<b>1.24 %</b>

#### Delinquent / Defaulted (Gross Loss) Ratio



### Run Out Schedule

#### ROS on the previous EoP on 2018/06/10

Next Payment Month	Number of Contracts	ABS Outstanding Principal	ABS Outstanding Interest	Outstanding Installment	ABS Remaining Principal	ABS Remaining Interest	ABS Remaining Installment
05.2018	31,379	56,165,314,785 JPY	1,951,702,415 JPY	58,117,017,200 JPY	0 JPY	0 JPY	0 JPY
06.2018	31,379	54,079,819,668 JPY	1,851,608,032 JPY	55,931,427,700 JPY	2,085,495,117 JPY	100,094,383 JPY	2,185,589,500 JPY
07.2018	30,705	52,069,979,393 JPY	1,755,166,407 JPY	53,825,145,800 JPY	2,009,840,275 JPY	96,441,625 JPY	2,106,281,900 JPY
08.2018	30,169	50,549,985,499 JPY	1,662,359,701 JPY	52,212,345,200 JPY	1,519,993,894 JPY	92,806,706 JPY	1,612,800,600 JPY
09.2018	29,692	48,928,144,866 JPY	1,572,281,934 JPY	50,500,426,800 JPY	1,621,840,633 JPY	90,077,767 JPY	1,711,918,400 JPY
10.2018	28,926	47,676,759,444 JPY	1,485,033,756 JPY	49,161,793,200 JPY	1,251,385,422 JPY	87,248,178 JPY	1,338,633,600 JPY
11.2018	28,502	46,341,691,667 JPY	1,400,061,333 JPY	47,741,753,000 JPY	1,335,067,777 JPY	84,972,423 JPY	1,420,040,200 JPY
12.2018	27,966	43,742,719,305 JPY	1,317,463,795 JPY	45,060,183,100 JPY	2,598,972,362 JPY	82,597,538 JPY	2,681,569,900 JPY
01.2019	27,142	42,077,298,426 JPY	1,239,532,474 JPY	43,316,830,900 JPY	1,665,420,879 JPY	77,931,321 JPY	1,743,352,200 JPY
02.2019	26,614	40,515,102,593 JPY	1,164,589,607 JPY	41,679,692,200 JPY	1,562,195,833 JPY	74,942,867 JPY	1,637,138,700 JPY
03.2019	25,891	38,450,389,715 JPY	1,092,398,585 JPY	39,542,788,300 JPY	2,064,712,878 JPY	72,191,022 JPY	2,136,903,900 JPY
04.2019	24,718	37,008,335,448 JPY	1,023,768,852 JPY	38,032,104,300 JPY	1,442,054,267 JPY	68,629,733 JPY	1,510,684,000 JPY
05.2019	24,184	35,399,229,128 JPY	957,600,172 JPY	36,356,829,300 JPY	1,609,106,320 JPY	66,168,680 JPY	1,675,275,000 JPY
06.2019	23,459	33,124,915,424 JPY	894,135,376 JPY	34,019,050,800 JPY	2,274,313,704 JPY	63,464,796 JPY	2,337,778,500 JPY
07.2019	22,530	31,152,785,796 JPY	834,462,804 JPY	31,987,248,600 JPY	1,972,129,628 JPY	59,672,572 JPY	2,031,802,200 JPY
08.2019	21,839	29,549,523,422 JPY	778,149,278 JPY	30,327,672,000 JPY	1,603,262,374 JPY	56,313,526 JPY	1,659,575,900 JPY
09.2019	21,122	27,569,890,663 JPY	724,442,837 JPY	28,294,333,500 JPY	1,979,632,759 JPY	53,706,441 JPY	2,033,339,200 JPY
10.2019	20,054	26,113,469,589 JPY	673,775,211 JPY	26,787,244,800 JPY	1,456,421,074 JPY	50,667,626 JPY	1,507,088,700 JPY
11.2019	19,334	24,322,856,903 JPY	625,470,797 JPY	24,948,327,700 JPY	1,790,612,686 JPY	48,304,414 JPY	1,838,917,100 JPY
12.2019	18,390	22,630,029,661 JPY	579,892,439 JPY	23,209,922,100 JPY	1,692,827,242 JPY	45,578,358 JPY	1,738,405,600 JPY
01.2020	17,865	21,506,517,510 JPY	537,316,890 JPY	22,043,834,400 JPY	1,123,512,151 JPY	42,575,549 JPY	1,166,087,700 JPY
02.2020	17,449	20,442,964,231 JPY	496,754,169 JPY	20,939,718,400 JPY	1,063,553,279 JPY	40,562,721 JPY	1,104,116,000 JPY
03.2020	16,862	19,160,015,989 JPY	458,048,311 JPY	19,618,064,300 JPY	1,282,948,242 JPY	38,705,858 JPY	1,321,654,100 JPY
04.2020	16,063	18,369,563,599 JPY	421,456,101 JPY	18,791,019,700 JPY	790,452,390 JPY	36,592,210 JPY	36,592,210 JPY
05.2020	15,776	17,531,406,507 JPY	386,302,893 JPY	17,917,709,400 JPY	838,157,092 JPY	35,153,208 JPY	873,310,300 JPY
06.2020	15,364	16,429,556,367 JPY	352,659,533 JPY	16,782,215,900 JPY	1,101,850,140 JPY	33,643,360 JPY	1,135,493,500 JPY
07.2020	14,916	15,436,333,709 JPY	321,050,591 JPY	15,757,384,300 JPY	993,222,658 JPY	31,608,942 JPY	1,024,831,600 JPY
08.2020	14,591	14,618,170,790 JPY	291,355,710 JPY	14,909,526,500 JPY	818,162,919 JPY	29,694,881 JPY	847,857,800 JPY
09.2020	14,182	13,863,472,541 JPY	263,182,459 JPY	14,126,655,000 JPY	754,698,249 JPY	28,173,251 JPY	782,871,500 JPY
10.2020	13,706	13,270,902,081 JPY	236,439,019 JPY	13,507,341,100 JPY	592,570,460 JPY	26,743,440 JPY	619,313,900 JPY
11.2020	13,425	12,680,659,008 JPY	210,877,092 JPY	12,891,536,100 JPY	590,243,073 JPY	25,561,927 JPY	615,805,000 JPY
12.2020	13,102	11,659,266,337 JPY	186,495,063 JPY	11,845,761,400 JPY	1,021,392,671 JPY	24,382,029 JPY	1,045,774,700 JPY
01.2021	12,685	10,856,637,941 JPY	164,157,759 JPY	11,020,795,700 JPY	802,628,396 JPY	22,337,304 JPY	824,965,700 JPY
02.2021	12,165	10,004,382,138 JPY	143,350,962 JPY	10,147,733,100 JPY	852,255,803 JPY	20,806,797 JPY	873,062,600 JPY
03.2021	11,383	9,013,016,709 JPY	124,156,191 JPY	9,137,172,900 JPY	991,365,429 JPY	19,194,771 JPY	1,010,560,200 JPY
04.2021	10,275	8,415,400,428 JPY	106,809,372 JPY	8,522,209,800 JPY	597,616,281 JPY	17,346,819 JPY	614,963,100 JPY
05.2021	9,724	7,746,311,805 JPY	90,655,195 JPY	7,836,967,000 JPY	669,088,623 JPY	16,154,177 JPY	685,242,800 JPY
06.2021	8,982	6,915,720,767 JPY	75,810,533 JPY	6,991,531,300 JPY	830,591,038 JPY	14,844,662 JPY	845,435,700 JPY
07.2021	8,180	6,003,365,065 JPY	62,639,235 JPY	6,066,004,300 JPY	912,355,702 JPY	13,171,298 JPY	925,527,000 JPY
08.2021	7,368	5,196,877,574 JPY	51,227,426 JPY	5,248,105,000 JPY	806,487,491 JPY	11,411,809 JPY	817,899,300 JPY
09.2021	6,438	4,173,205,982 JPY	41,295,218 JPY	4,214,501,200 JPY	1,023,671,592 JPY	9,932,208 JPY	1,033,603,800 JPY
10.2021	5,202	3,510,393,974 JPY	33,286,526 JPY	3,543,680,500 JPY	662,812,008 JPY	8,008,692 JPY	670,820,700 JPY
11.2021	4,430	2,684,862,155 JPY	26,510,045 JPY	2,711,372,200 JPY	825,531,819 JPY	6,776,481 JPY	832,308,300 JPY
12.2021	3,406	2,231,052,170 JPY	21,229,130 JPY	2,252,281,300 JPY	453,809,985 JPY	5,280,915 JPY	459,090,900 JPY
01.2022	3,045	1,902,761,586 JPY	16,826,914 JPY	1,919,588,500 JPY	328,290,584 JPY	4,402,216 JPY	332,692,800 JPY
02.2022	2,729	1,572,862,767 JPY	13,069,433 JPY	1,585,932,200 JPY	329,898,819 JPY	3,757,481 JPY	333,656,300 JPY
03.2022	2,355	1,135,801,244 JPY	9,950,756 JPY	1,145,752,000 JPY	437,061,523 JPY	3,118,677 JPY	440,180,200 JPY
04.2022	1,766	938,123,623 JPY	7,623,277 JPY	945,746,900 JPY	197,677,621 JPY	2,327,479 JPY	200,005,100 JPY
05.2022	1,506	733,996,049 JPY	5,678,751 JPY	739,674,800 JPY	204,127,574 JPY	1,944,526 JPY	206,072,100 JPY
06.2022	1,212	516,907,712 JPY	4,113,988 JPY	521,021,700 JPY	217,088,337 JPY	1,564,763 JPY	218,653,100 JPY
07.2022	913	371,402,860 JPY	2,967,140 JPY	374,370,000 JPY	145,504,852 JPY	1,146,848 JPY	146,651,700 JPY
08.2022	727	270,442,411 JPY	2,123,289 JPY	272,565,700 JPY	100,960,449 JPY	843,851 JPY	101,804,300 JPY
09.2022	529	155,877,683 JPY	1,487,917 JPY	157,365,600 JPY	114,564,728 JPY	635,372 JPY	115,200,100 JPY
10.2022	340	87,636,194 JPY	1,093,106 JPY	88,729,300 JPY	68,241,489 JPY	394,811 JPY	68,636,300 JPY
11.2022	239	54,938,758 JPY	856,542 JPY	55,795,300 JPY	32,697,436 JPY	236,564 JPY	32,934,000 JPY
12.2022	178	42,611,100 JPY	693,200 JPY	43,304,300 JPY	12,327,658 JPY	163,342 JPY	12,491,000 JPY
01.2023	152	34,582,182 JPY	565,818 JPY	35,148,000 JPY	8,028,918 JPY	127,382 JPY	8,156,300 JPY
02.2023	138	29,096,636 JPY	461,764 JPY	29,558,400 JPY	5,485,546 JPY	104,054 JPY	5,589,600 JPY
03.2023	119	24,373,995 JPY	373,705 JPY	24,747,700 JPY	4,722,641 JPY	88,059 JPY	4,810,700 JPY
04.2023	97	20,416,230 JPY	299,470 JPY	20,715,700 JPY	3,957,765 JPY	74,235 JPY	4,032,000 JPY
05.2023	87	16,810,355 JPY	237,045 JPY	17,047,400 JPY	3,605,875 JPY	62,425 JPY	3,668,300 JPY
06.2023	68	13,291,007 JPY	185,393 JPY	13,476,400 JPY	3,519,348 JPY	51,652 JPY	3,571,000 JPY
07.2023	52	9,867,996 JPY	144,004 JPY	10,012,000 JPY	3,423,011 JPY	41,389 JPY	3,464,400 JPY
08.2023	46	7,476,993 JPY	113,107 JPY	7,590,100 JPY	2,391,003 JPY	30,897 JPY	2,421,900 JPY
09.2023	39	5,850,380 JPY	89,620 JPY	5,940,000 JPY	1,626,613 JPY	23,487 JPY	1,650,100 JPY
10.2023	25	4,795,064 JPY	71,136 JPY	4,866,200 JPY	1,055,316 JPY	18,484 JPY	1,073,800 JPY
11.2023	15	4,166,883 JPY	55,917 JPY	4,222,800 JPY	628,181 JPY	15,219 JPY	643,400 JPY
12.2023	12	2,868,255 JPY	42,645 JPY	2,910,900 JPY	1,298,628 JPY	13,272 JPY	1,311,900 JPY
01.2024	10	2,314,191 JPY	33,509 JPY	2,347,700 JPY	554,064 JPY	9,136 JPY	563,200 JPY
02.2024	9	1,952,261 JPY	26,139 JPY	1,978,400 JPY	361,930 JPY	7,370 JPY	369,300 JPY
03.2024	7	1,670,980 JPY	19,920 JPY	1,690,900 JPY	281,281 JPY	6,219 JPY	287,500 JPY
04.2024	6	1,442,602 JPY	14,598 JPY	1,457,200 JPY	228,378 JPY	5,322 JPY	233,700 JPY
05.2024	5	1,264,097 JPY	10,003 JPY	1,274,100 JPY	178,505 JPY	4,595 JPY	183,100 JPY
06.2024	5	1,085,024 JPY	5,976 JPY	1,091,000 JPY	179,073 JPY	4,027 JPY	183,100 JPY
07.2024	5	415,380 JPY	2,520 JPY	417,900 JPY	669,644 JPY	3,456 JPY	673,100 JPY
08.2024	4	263,803 JPY	1,197 JPY	265,000 JPY	151,577 JPY	1,323 JPY	152,900 JPY
09.2024	4	111,744 JPY	356 JPY	112,100 JPY	152,059 JPY	841 JPY	152,900 JPY
10.2024	3	0 JPY	0 JPY	0 JPY	111,744 JPY	356 JPY	112,100 JPY

### Run Out Schedule

#### ROS on the relevant EoP on 2018/07/10

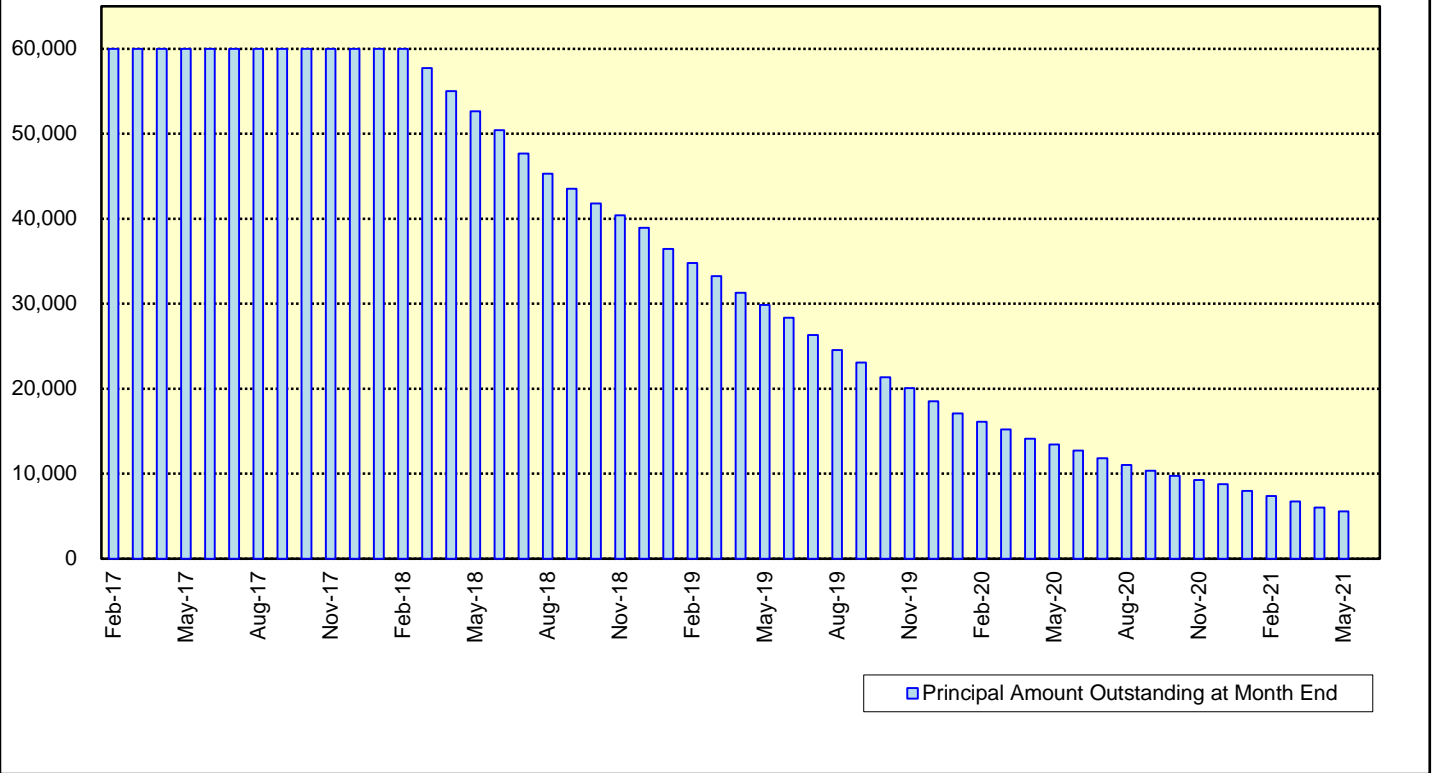
Next Payment Month	Number of Contracts	ABS Outstanding Principal	ABS Outstanding Interest	Outstanding Installment	ABS Remaining Principal	ABS Remaining Interest	ABS Remaining Installment
06.2018	30,348	53,472,357,158 JPY	1,835,095,142 JPY	55,307,452,300 JPY	0 JPY	0 JPY	0 JPY
07.2018	30,348	51,515,930,727 JPY	1,739,770,573 JPY	53,255,701,300 JPY	1,956,426,431 JPY	95,324,569 JPY	2,051,751,000 JPY
08.2018	29,842	50,026,538,861 JPY	1,647,994,839 JPY	51,674,533,700 JPY	1,489,391,866 JPY	91,775,734 JPY	1,581,167,600 JPY
09.2018	29,379	48,438,020,812 JPY	1,558,891,288 JPY	49,996,912,100 JPY	1,588,518,049 JPY	89,103,551 JPY	1,677,621,600 JPY
10.2018	28,632	47,203,608,257 JPY	1,472,558,943 JPY	48,676,167,200 JPY	1,234,412,555 JPY	86,332,345 JPY	1,320,744,900 JPY
11.2018	28,219	45,887,502,141 JPY	1,388,470,359 JPY	47,275,972,500 JPY	1,316,106,116 JPY	84,088,584 JPY	1,400,194,700 JPY
12.2018	27,691	43,327,496,382 JPY	1,306,722,218 JPY	44,634,218,600 JPY	2,560,005,759 JPY	81,748,141 JPY	2,641,753,900 JPY
01.2019	26,880	41,691,237,598 JPY	1,229,572,802 JPY	42,920,810,400 JPY	1,636,258,784 JPY	77,149,416 JPY	1,713,408,200 JPY
02.2019	26,366	40,148,676,136 JPY	1,155,361,364 JPY	41,304,037,500 JPY	1,542,561,462 JPY	74,211,438 JPY	1,616,772,900 JPY
03.2019	25,654	38,115,901,521 JPY	1,083,861,779 JPY	39,199,763,300 JPY	2,032,774,615 JPY	71,499,585 JPY	2,104,274,200 JPY
04.2019	24,495	36,689,782,669 JPY	1,015,861,731 JPY	37,707,644,400 JPY	1,424,118,852 JPY	68,000,048 JPY	1,492,118,900 JPY
05.2019	23,970	35,118,299,163 JPY	950,292,437 JPY	36,068,591,600 JPY	1,573,483,506 JPY	65,569,294 JPY	1,639,052,800 JPY
06.2019	23,265	32,860,771,097 JPY	887,371,203 JPY	33,748,142,300 JPY	2,257,528,066 JPY	62,921,234 JPY	2,320,449,300 JPY
07.2019	22,346	30,909,829,358 JPY	828,211,042 JPY	31,738,040,400 JPY	1,950,941,739 JPY	59,160,161 JPY	2,010,101,900 JPY
08.2019	21,668	29,317,634,545 JPY	772,369,655 JPY	30,090,004,200 JPY	1,592,194,813 JPY	55,841,387 JPY	1,648,036,200 JPY
09.2019	20,956	27,356,269,111 JPY	719,115,189 JPY	28,075,384,300 JPY	1,961,365,434 JPY	53,254,466 JPY	2,014,619,900 JPY
10.2019	19,898	25,916,757,054 JPY	668,873,046 JPY	26,585,630,100 JPY	1,439,512,057 JPY	50,242,143 JPY	1,489,754,200 JPY
11.2019	19,186	24,135,081,500 JPY	620,970,100 JPY	24,756,051,600 JPY	1,781,675,554 JPY	47,902,946 JPY	1,829,578,500 JPY
12.2019	18,247	22,460,601,923 JPY	575,775,977 JPY	23,036,377,900 JPY	1,674,479,577 JPY	45,194,123 JPY	1,719,673,900 JPY
01.2020	17,728	21,344,035,933 JPY	533,554,367 JPY	21,877,590,300 JPY	1,116,565,990 JPY	42,221,610 JPY	1,158,787,600 JPY
02.2020	17,314	20,289,750,160 JPY	493,330,140 JPY	20,783,080,300 JPY	1,054,285,773 JPY	40,224,227 JPY	1,094,510,000 JPY
03.2020	16,732	19,016,316,213 JPY	454,942,687 JPY	19,471,258,900 JPY	1,273,433,947 JPY	38,387,453 JPY	1,311,821,400 JPY
04.2020	15,937	18,235,140,976 JPY	418,652,424 JPY	18,653,793,400 JPY	781,175,237 JPY	36,290,263 JPY	817,465,500 JPY
05.2020	15,653	17,409,755,963 JPY	383,785,537 JPY	17,793,541,500 JPY	825,385,013 JPY	34,866,887 JPY	860,251,900 JPY
06.2020	15,249	16,315,876,426 JPY	350,402,774 JPY	16,666,279,200 JPY	1,093,879,537 JPY	33,382,763 JPY	1,127,262,300 JPY
07.2020	14,807	15,331,816,001 JPY	319,037,099 JPY	15,650,853,100 JPY	984,060,425 JPY	31,365,675 JPY	1,015,426,100 JPY
08.2020	14,485	14,520,152,095 JPY	289,563,805 JPY	14,809,715,900 JPY	811,663,906 JPY	29,473,294 JPY	841,137,200 JPY
09.2020	14,080	13,773,903,647 JPY	261,596,053 JPY	14,035,499,700 JPY	746,248,448 JPY	27,967,752 JPY	774,216,200 JPY
10.2020	13,611	13,186,278,672 JPY	235,042,828 JPY	13,421,321,500 JPY	587,624,975 JPY	26,553,225 JPY	614,178,200 JPY
11.2020	13,334	12,603,739,602 JPY	209,660,398 JPY	12,813,400,000 JPY	582,539,070 JPY	25,382,430 JPY	607,921,500 JPY
12.2020	13,016	11,590,887,161 JPY	185,441,139 JPY	11,776,328,300 JPY	1,012,852,441 JPY	24,219,259 JPY	1,037,071,700 JPY
01.2021	12,605	10,795,038,749 JPY	163,247,851 JPY	10,958,286,600 JPY	795,848,412 JPY	22,193,288 JPY	818,041,700 JPY
02.2021	12,090	9,949,154,175 JPY	142,571,525 JPY	10,091,725,700 JPY	845,884,574 JPY	20,676,326 JPY	866,560,900 JPY
03.2021	11,312	8,965,333,733 JPY	123,494,367 JPY	9,088,828,100 JPY	983,820,442 JPY	19,077,158 JPY	1,002,897,600 JPY
04.2021	10,210	8,371,864,001 JPY	106,246,099 JPY	8,478,110,100 JPY	593,469,732 JPY	17,248,268 JPY	610,718,000 JPY
05.2021	9,666	7,708,972,663 JPY	90,182,037 JPY	7,799,154,700 JPY	662,891,338 JPY	16,064,062 JPY	678,955,400 JPY
06.2021	8,932	6,883,810,412 JPY	75,415,488 JPY	6,959,225,900 JPY	825,162,251 JPY	14,766,549 JPY	839,928,800 JPY
07.2021	8,136	5,974,650,004 JPY	62,310,896 JPY	6,036,960,900 JPY	909,160,408 JPY	13,104,592 JPY	922,265,000 JPY
08.2021	7,327	5,173,764,605 JPY	50,959,395 JPY	5,224,724,000 JPY	800,885,399 JPY	11,351,501 JPY	812,236,900 JPY
09.2021	6,403	4,157,822,692 JPY	41,075,708 JPY	4,198,898,400 JPY	1,015,941,913 JPY	9,883,687 JPY	1,025,825,600 JPY
10.2021	5,178	3,499,112,393 JPY	33,100,507 JPY	3,532,212,900 JPY	658,710,299 JPY	7,975,201 JPY	666,685,500 JPY
11.2021	4,411	2,675,792,152 JPY	26,349,648 JPY	2,702,141,800 JPY	823,320,241 JPY	6,750,859 JPY	830,071,100 JPY
12.2021	3,391	2,224,575,609 JPY	21,089,591 JPY	2,245,665,200 JPY	451,216,543 JPY	5,260,057 JPY	456,476,600 JPY
01.2022	3,033	1,896,698,632 JPY	16,703,068 JPY	1,913,401,700 JPY	327,876,977 JPY	4,386,523 JPY	332,263,500 JPY
02.2022	2,717	1,567,139,481 JPY	12,960,219 JPY	1,580,099,700 JPY	329,559,151 JPY	3,742,849 JPY	333,302,000 JPY
03.2022	2,343	1,130,758,851 JPY	9,855,349 JPY	1,140,614,200 JPY	436,380,630 JPY	3,104,870 JPY	439,485,500 JPY
04.2022	1,755	933,453,808 JPY	7,540,292 JPY	940,994,100 JPY	197,305,043 JPY	2,315,057 JPY	199,620,100 JPY
05.2022	1,496	729,609,716 JPY	5,607,284 JPY	735,217,000 JPY	203,844,092 JPY	1,933,008 JPY	205,777,100 JPY
06.2022	1,202	512,935,584 JPY	4,053,316 JPY	516,988,900 JPY	216,674,132 JPY	1,553,968 JPY	218,228,100 JPY
07.2022	903	367,815,914 JPY	2,916,286 JPY	370,732,200 JPY	145,119,670 JPY	1,137,030 JPY	146,256,700 JPY
08.2022	719	267,518,654 JPY	2,081,246 JPY	269,599,900 JPY	100,297,260 JPY	835,040 JPY	101,132,300 JPY
09.2022	523	153,352,626 JPY	1,452,974 JPY	154,805,600 JPY	114,166,028 JPY	628,272 JPY	114,794,300 JPY
10.2022	335	86,006,103 JPY	1,064,297 JPY	87,070,400 JPY	67,346,523 JPY	388,677 JPY	67,735,200 JPY
11.2022	236	53,461,071 JPY	832,229 JPY	54,293,300 JPY	32,545,032 JPY	232,068 JPY	32,777,100 JPY
12.2022	176	41,304,551 JPY	672,949 JPY	41,977,500 JPY	12,156,520 JPY	159,280 JPY	12,315,800 JPY
01.2023	150	33,397,263 JPY	549,137 JPY	33,946,400 JPY	7,907,288 JPY	123,812 JPY	8,031,100 JPY
02.2023	136	28,033,681 JPY	448,319 JPY	28,482,000 JPY	5,363,582 JPY	100,818 JPY	5,464,400 JPY
03.2023	117	23,433,339 JPY	363,161 JPY	23,796,500 JPY	4,600,342 JPY	85,158 JPY	4,685,500 JPY
04.2023	95	19,598,209 JPY	291,491 JPY	19,889,700 JPY	3,835,130 JPY	71,670 JPY	3,906,800 JPY
05.2023	85	16,115,306 JPY	231,294 JPY	16,346,600 JPY	3,482,903 JPY	60,197 JPY	3,543,100 JPY
06.2023	66	12,719,268 JPY	181,532 JPY	12,900,800 JPY	3,396,038 JPY	49,762 JPY	3,445,800 JPY
07.2023	50	9,469,907 JPY	141,693 JPY	9,611,600 JPY	3,249,361 JPY	39,839 JPY	3,289,200 JPY
08.2023	44	7,203,053 JPY	111,847 JPY	7,314,900 JPY	2,266,854 JPY	29,846 JPY	2,296,700 JPY
09.2023	37	5,700,931 JPY	89,069 JPY	5,790,000 JPY	1,502,122 JPY	22,778 JPY	1,524,900 JPY
10.2023	24	4,720,248 JPY	70,952 JPY	4,791,200 JPY	980,683 JPY	18,117 JPY	998,800 JPY
11.2023	14	4,166,883 JPY	55,917 JPY	4,222,800 JPY	553,365 JPY	15,035 JPY	568,400 JPY
12.2023	12	2,868,255 JPY	42,645 JPY	2,910,900 JPY	1,298,628 JPY	13,272 JPY	1,311,900 JPY
01.2024	10	2,314,191 JPY	33,509 JPY	2,347,700 JPY	554,064 JPY	9,136 JPY	563,200 JPY
02.2024	9	1,952,261 JPY	26,139 JPY	1,978,400 JPY	361,930 JPY	7,370 JPY	369,300 JPY
03.2024	7	1,670,980 JPY	19,920 JPY	1,690,900 JPY	281,281 JPY	6,219 JPY	287,500 JPY
04.2024	6	1,442,602 JPY	14,598 JPY	1,457,200 JPY	228,378 JPY	5,322 JPY	233,700 JPY
05.2024	5	1,264,097 JPY	10,003 JPY	1,274,100 JPY	178,505 JPY	4,595 JPY	183,100 JPY
06.2024	5	1,085,024 JPY	5,976 JPY	1,091,000 JPY	179,073 JPY	4,027 JPY	183,100 JPY
07.2024	5	415,380 JPY	2,520 JPY	417,900 JPY	669,644 JPY	3,456 JPY	673,100 JPY
08.2024	4	263,803 JPY	1,197 JPY	265,000 JPY	151,577 JPY	1,323 JPY	152,900 JPY
09.2024	4	111,744 JPY	356 JPY	112,100 JPY	152,059 JPY	841 JPY	152,900 JPY
10.2024	3	0 JPY	0 JPY	0 JPY	111,744 JPY	356 JPY	112,100 JPY

**Expected Amortisation**

**Expected Amortization to the Second Trust**

JPY mil.

Assuming a Clean-Up Call at 10% of the Initial Outstanding Balance, annual prepayments of 10% and 0% defaults.





**Distribution by Sub-Servicer**

Sub-Servicer	Number of Loans	Percentage of Loans	Outstanding Principal Balance	Percentage of Balance
Cedyna	17,873	58.89 %	32,103,990,723 JPY	60.04 %
Jaccs	12,475	41.11 %	21,368,366,435 JPY	39.96 %
<b>Total</b>	<b>30,348</b>	<b>100.00 %</b>	<b>53,472,357,158 JPY</b>	<b>100.00 %</b>

**Distribution by Brand**

Make	Number of Loans	Percentage of Loans	Outstanding Discounted Principal Balance	Percentage of Balance
VW	19,438	64.05 %	28,868,643,326 JPY	53.99 %
Audi	10,884	35.86 %	24,524,123,593 JPY	45.86 %
Bentley	13	0.04 %	63,671,661 JPY	0.12 %
Lamborghini	2	0.01 %	7,386,900 JPY	0.01 %
Other	11	0.04 %	8,531,678 JPY	0.02 %
<b>Total</b>	<b>30,348</b>	<b>100.00 %</b>	<b>53,472,357,158 JPY</b>	<b>100.00 %</b>

**Distribution by New and Used**
**Distribution by New and Used**

New or Used	Number of Loans	Percentage of Loans	Outstanding Discounted Principal Balance	Percentage of Balance
New	20,242	66.70 %	41,474,398,769 JPY	77.56 %
Used	8,263	27.23 %	11,187,270,944 JPY	20.92 %
Used (Prolonged)	1,843	6.07 %	810,687,445 JPY	1.52 %
<b>Total</b>	<b>30,348</b>	<b>100.00 %</b>	<b>53,472,357,158 JPY</b>	<b>100.00 %</b>

**Distribution by Brand New and Used**

New or Used	Number of Loans	Percentage of Loans	Outstanding Discounted Principal Balance	Percentage of Balance
VW New	13,621	44.88 %	23,783,006,623 JPY	44.48 %
VW Used	4,487	14.79 %	4,687,315,689 JPY	8.77 %
VW Used (Prolonged)	1,330	4.38 %	398,321,014 JPY	0.74 %
Audi New	6,611	21.78 %	17,647,602,261 JPY	33.00 %
Audi Used	3,760	12.39 %	6,464,154,901 JPY	12.09 %
Audi Used (Prolonged)	513	1.69 %	412,366,431 JPY	0.77 %
Other	26	0.09 %	79,590,239 JPY	0.15 %
<b>Total</b>	<b>30,348</b>	<b>100.00 %</b>	<b>53,472,357,158 JPY</b>	<b>100.00 %</b>

## Distribution by Product Type

### Loan Type List

Loan Type	Description
100	Volkswagen Owner's Plan
100	Audi Owner's Plan
100	Lamborghini Auto Loan
100	Bentley Auto Loan
101	Twin Loan
105	Refinanced Volkswagen Solutions
106	Refinanced Volkswagen Das Welt Auto with refinance option *
106	Refinanced Audi S-Loan/ S-Loan Plus
106	Refinanced Lamborghini Hyper Premium Plan
106	Refinanced Bentley My Flying B
140	Volkswagen Solutions
150	Volkswagen Das Welt Auto with refinance option **
150	Audi S-Loan
150	Lamborghini Hyper Premium Plan
150	Bentley My Flying B
151	Audi S-Loan Plus

(\*) The name was changed from "Refinanced Volkswagen GUC with refinance option" effective from 1 February 2012.

No other changes were made to auto loan agreements.

(\*\*) The name was changed from "Volkswagen GUC with refinance option" effective from 1 February 2012.

No other changes were made to auto loan agreements.

### Product Type

Loan Type	Number of Loans	Percentage of Loans	Outstanding Discounted Principal Balance	Percentage of Balance
100	4,314	14.22 %	4,946,489,887 JPY	9.25 %
101	0	0.00 %	0 JPY	0.00 %
105	1,291	4.25 %	391,856,734 JPY	0.73 %
106	552	1.82 %	418,830,711 JPY	0.78 %
140-VFJ	1,970	6.49 %	3,424,460,669 JPY	6.40 %
140-Dealer	10,624	35.01 %	19,146,167,373 JPY	35.81 %
150	11,039	36.37 %	23,647,453,771 JPY	44.22 %
151	558	1.84 %	1,497,098,013 JPY	2.80 %
<b>Total</b>	<b>30,348</b>	<b>100.00 %</b>	<b>53,472,357,158 JPY</b>	<b>100.00 %</b>

### Credit Type

Credit Type	Number of Loans	Percentage of Loans	Outstanding Discounted Principal Balance	Percentage of Balance
Balloon Type Loan	24,191	79.71 %	47,715,179,826 JPY	89.23 %
Equal Instalment Type Loan	6,157	20.29 %	5,757,177,332 JPY	10.77 %
<b>Total</b>	<b>30,348</b>	<b>100.00 %</b>	<b>53,472,357,158 JPY</b>	<b>100.00 %</b>

**Distribution by RV**

Loan Type	Number of Loans	Percentage of Balance	Outstanding Discounted Principal Balance
100/101/105/106	6,157	10.77 %	5,757,177,332 JPY
140-VFJ (excl. balloon)		3.39 %	1,811,518,829 JPY
140-VFJ (balloon)		3.02 %	1,612,941,840 JPY
140-VFJ	1,970	6.40 %	3,424,460,669 JPY
140-Dealer (excl. balloon)		18.92 %	10,116,646,615 JPY
140-Dealer (balloon)		16.89 %	9,029,520,758 JPY
140-Dealer	10,624	35.81 %	19,146,167,373 JPY
150 (excl. balloon)		19.54 %	10,446,929,100 JPY
150 (balloon)		24.69 %	13,200,524,671 JPY
150	11,039	44.22 %	23,647,453,771 JPY
151 (excl. balloon)		0.75 %	403,647,482 JPY
151 (balloon)		2.04 %	1,093,450,531 JPY
151	558	2.80 %	1,497,098,013 JPY
<b>Total</b>	<b>30,348</b>	<b>100.00 %</b>	<b>53,472,357,158 JPY</b>

Type of Payment Portion	Percentage of Balance	Outstanding Discounted Principal Balance
Monthly Installment Portion	53.37 %	28,535,919,358 JPY
Balloon Portion	46.63 %	24,936,437,800 JPY
<b>Total</b>	<b>100.00 %</b>	<b>53,472,357,158 JPY</b>

**Distribution by Brand New and Used**
**Audi**

New or Used	Number of Loans	Percentage of Loans	Outstanding Discounted Principal Balance	Percentage of Balance
New	6,611	60.74 %	17,647,602,261 JPY	71.96 %
Used	4,273	39.26 %	6,876,521,332 JPY	28.04 %
<b>Total</b>	<b>10,884</b>	<b>100.00 %</b>	<b>24,524,123,593 JPY</b>	<b>100.00 %</b>

**Bentley**

New or Used	Number of Loans	Percentage of Loans	Outstanding Discounted Principal Balance	Percentage of Balance
New	8	61.54 %	36,402,985 JPY	57.17 %
Used	5	38.46 %	27,268,676 JPY	42.83 %
<b>Total</b>	<b>13</b>	<b>100.00 %</b>	<b>63,671,661 JPY</b>	<b>100.00 %</b>

**Lamborghini**

New or Used	Number of Loans	Percentage of Loans	Outstanding Discounted Principal Balance	Percentage of Balance
New	2	100.00 %	7,386,900 JPY	100.00 %
Used	0	0.00 %	0 JPY	0.00 %
<b>Total</b>	<b>2</b>	<b>100.00 %</b>	<b>7,386,900 JPY</b>	<b>100.00 %</b>

**VW**

New or Used	Number of Loans	Percentage of Loans	Outstanding Discounted Principal Balance	Percentage of Balance
New	13,621	70.07 %	23,783,006,623 JPY	82.38 %
Used	5,817	29.93 %	5,085,636,703 JPY	17.62 %
<b>Total</b>	<b>19,438</b>	<b>100.00 %</b>	<b>28,868,643,326 JPY</b>	<b>100.00 %</b>

**OTHER**

New or Used	Number of Loans	Percentage of Loans	Outstanding Discounted Principal Balance	Percentage of Balance
New	0	0.00 %	0 JPY	0.00 %
Used	11	100.00 %	8,531,678 JPY	100.00 %
<b>Total</b>	<b>11</b>	<b>100.00 %</b>	<b>8,531,678 JPY</b>	<b>100.00 %</b>

### Distribution by Customer Type

#### Customer Type

Customer Type	Number of Loans	Percentage of Loans	Outstanding Discounted Principal Balance	Percentage of Balance
Retail	27,452	90.46 %	46,146,470,079 JPY	86.30 %
Corporate	2,896	9.54 %	7,325,887,079 JPY	13.70 %
<b>Total</b>	<b>30,348</b>	<b>100.00 %</b>	<b>53,472,357,158 JPY</b>	<b>100.00 %</b>

**Distribution by Outstanding Discounted Principal Balance**

Outstanding Discounted Principal Balance	Number of Loans	Percentage of Loans	Outstanding Discounted Principal Balance	Percentage of Balance
<= 500,000 JPY	3,020	9.95 %	802,308,878 JPY	1.50 %
500,001 JPY - 1,000,000 JPY	4,596	15.14 %	3,529,278,066 JPY	6.60 %
1,000,001 JPY - 1,500,000 JPY	6,314	20.81 %	7,954,038,695 JPY	14.88 %
1,500,001 JPY - 2,000,000 JPY	5,980	19.70 %	10,417,808,449 JPY	19.48 %
2,000,001 JPY - 2,500,000 JPY	4,487	14.79 %	10,010,069,050 JPY	18.72 %
2,500,001 JPY - 3,000,000 JPY	2,444	8.05 %	6,649,702,101 JPY	12.44 %
3,000,001 JPY - 3,500,000 JPY	1,320	4.35 %	4,266,534,053 JPY	7.98 %
3,500,001 JPY - 4,000,000 JPY	833	2.74 %	3,114,980,184 JPY	5.83 %
4,000,001 JPY - 4,500,000 JPY	562	1.85 %	2,376,891,026 JPY	4.45 %
4,500,001 JPY - 5,000,000 JPY	295	0.97 %	1,396,238,691 JPY	2.61 %
5,000,001 JPY - 6,000,000 JPY	312	1.03 %	1,684,413,129 JPY	3.15 %
6,000,001 JPY - 7,000,000 JPY	120	0.40 %	771,072,465 JPY	1.44 %
7,000,001 JPY - 8,000,000 JPY	49	0.16 %	363,372,815 JPY	0.68 %
8,000,001 JPY - 9,000,000 JPY	12	0.04 %	98,772,798 JPY	0.18 %
9,000,001 JPY - 10,000,000 JPY	4	0.01 %	36,876,758 JPY	0.07 %
>= 10,000,001 JPY	0	0.00 %	0 JPY	0.00 %
<b>Total</b>	<b>30,348</b>	<b>100.00 %</b>	<b>53,472,357,158 JPY</b>	<b>100.00 %</b>

**Statistics**

<b>Minimum</b> Outstanding Discounted Principal Balance	8,574 JPY
<b>Maximum</b> Outstanding Discounted Principal Balance	9,343,577 JPY
<b>Average</b> Outstanding Discounted Principal Balance	1,761,973 JPY



**Distribution by Original Principal Amount**

Original Principal Balance	Number of Loans	Percentage of Loans	Outstanding Discounted Principal Balance	Percentage of Balance
<= 500,000 JPY	301	0.99 %	44,123,230 JPY	0.08 %
500,001 JPY - 1,000,000 JPY	2,080	6.85 %	791,028,947 JPY	1.48 %
1,000,001 JPY - 1,500,000 JPY	3,270	10.78 %	2,479,353,340 JPY	4.64 %
1,500,001 JPY - 2,000,000 JPY	4,889	16.11 %	5,513,152,658 JPY	10.31 %
2,000,001 JPY - 2,500,000 JPY	5,061	16.68 %	7,447,892,251 JPY	13.93 %
2,500,001 JPY - 3,000,000 JPY	4,875	16.06 %	8,828,798,052 JPY	16.51 %
3,000,001 JPY - 3,500,000 JPY	3,437	11.33 %	7,407,293,780 JPY	13.85 %
3,500,001 JPY - 4,000,000 JPY	2,226	7.33 %	5,578,207,392 JPY	10.43 %
4,000,001 JPY - 4,500,000 JPY	1,246	4.11 %	3,569,330,285 JPY	6.68 %
4,500,001 JPY - 5,000,000 JPY	928	3.06 %	2,986,227,073 JPY	5.58 %
5,000,001 JPY - 6,000,000 JPY	953	3.14 %	3,536,278,495 JPY	6.61 %
6,000,001 JPY - 7,000,000 JPY	543	1.79 %	2,352,279,142 JPY	4.40 %
7,000,001 JPY - 8,000,000 JPY	238	0.78 %	1,177,478,067 JPY	2.20 %
8,000,001 JPY - 9,000,000 JPY	133	0.44 %	736,647,549 JPY	1.38 %
9,000,001 JPY - 10,000,000 JPY	74	0.24 %	471,094,092 JPY	0.88 %
>= 10,000,001 JPY	94	0.31 %	553,172,805 JPY	1.03 %
<b>Total</b>	<b>30,348</b>	<b>100.00 %</b>	<b>53,472,357,158 JPY</b>	<b>100.00 %</b>

**Statistics**

<b>Minimum</b> Original Principal Balance	90,000 JPY
<b>Maximum</b> Original Principal Balance	25,000,000 JPY
<b>Average</b> Original Principal Balance	2,727,416 JPY

**Distribution by Interest Rate paid by the Obligor**

Interest Rate paid by the Obligor	Number of Loans	Percentage of Loans	Outstanding Discounted Principal Balance	Percentage of Balance
< 0.900 %	1,037	3.42 %	2,028,221,918 JPY	3.79 %
0.900 % < 1.500 %	5,435	17.91 %	11,997,039,033 JPY	22.44 %
1.500 % < 2.000 %	11,020	36.31 %	21,207,704,190 JPY	39.66 %
2.000 % < 2.500 %	266	0.88 %	465,630,827 JPY	0.87 %
2.500 % < 3.000 %	6,832	22.51 %	11,463,945,373 JPY	21.44 %
3.000 % < 3.500 %	1,134	3.74 %	849,953,365 JPY	1.59 %
3.500 % < 4.000 %	4,590	15.12 %	5,420,815,547 JPY	10.14 %
4.000 % < 4.500 %	34	0.11 %	39,046,905 JPY	0.07 %
4.500 % < 5.000 %	0	0.00 %	0 JPY	0.00 %
5.000 % or more	0	0.00 %	0 JPY	0.00 %
<b>Total</b>	<b>30,348</b>	<b>100.00 %</b>	<b>53,472,357,158 JPY</b>	<b>100.00 %</b>

Statistics	
Minimum Interest Rate	0.00 %
Maximum Interest Rate	4.49 %
Weighted Average Interest Rate	2.08 %

### Distribution by Original Term

Length of Original Term (months)	Number of Loans	Percentage of Loans	Outstanding Discounted Principal Balance	Percentage of Balance
6 - 12	18	0.06 %	4,301,680 JPY	0.01 %
13 - 18	28	0.09 %	6,464,900 JPY	0.01 %
19 - 24	1,130	3.72 %	381,062,057 JPY	0.71 %
25 - 30	89	0.29 %	38,737,775 JPY	0.07 %
31 - 36	11,143	36.72 %	21,173,927,550 JPY	39.60 %
37 - 42	80	0.26 %	52,622,350 JPY	0.10 %
43 - 48	1,598	5.27 %	1,892,590,513 JPY	3.54 %
49 - 54	27	0.09 %	30,600,107 JPY	0.06 %
55 - 60	15,361	50.62 %	28,283,111,386 JPY	52.89 %
61 - 66	20	0.07 %	25,971,788 JPY	0.05 %
67 - 72	673	2.22 %	1,140,890,070 JPY	2.13 %
73 - 84	181	0.60 %	442,076,982 JPY	0.83 %
<b>Total</b>	<b>30,348</b>	<b>100.00 %</b>	<b>53,472,357,158 JPY</b>	<b>100.00 %</b>

Statistics	
<b>Minimum</b> Original Term in months	12
<b>Maximum</b> Original Term in months	84
<b>Weighted Average</b> Original Term in months	50.22

**Distribution by Remaining Term**

Length of Remaining Term (months)	Number of Loans	Percentage of Loans	Outstanding Discounted Principal Balance	Percentage of Balance
<= 12	8,002	26.37 %	10,070,423,725 JPY	18.83 %
13 - 18	4,618	15.22 %	8,521,340,433 JPY	15.94 %
19 - 24	2,921	9.63 %	5,241,319,772 JPY	9.80 %
25 - 30	2,202	7.26 %	3,804,218,869 JPY	7.11 %
31 - 36	4,469	14.73 %	8,097,239,005 JPY	15.14 %
37 - 42	5,103	16.81 %	10,615,494,064 JPY	19.85 %
43 - 48	2,130	7.02 %	4,863,836,076 JPY	9.10 %
49 - 54	753	2.48 %	1,869,169,639 JPY	3.50 %
55 - 60	100	0.33 %	244,071,960 JPY	0.46 %
61 - 66	40	0.13 %	111,012,787 JPY	0.21 %
67 - 72	5	0.02 %	16,309,168 JPY	0.03 %
73 - 84	5	0.02 %	17,921,660 JPY	0.03 %
<b>Total</b>	<b>30,348</b>	<b>100.00 %</b>	<b>53,472,357,158 JPY</b>	<b>100.00 %</b>

Statistics	
<b>Minimum</b> Remaining Term in months	1
<b>Maximum</b> Remaining Term in months	76
<b>Weighted Average</b> Remaining Term in months	27.25

**Distribution by Seasoning**

Seasoning (months)	Number of Loans	Percentage of Loans	Outstanding Discounted Principal Balance	Percentage of Balance
<= 12	1,780	5.87 %	4,088,796,226 JPY	7.65 %
13 - 18	4,395	14.48 %	9,242,328,977 JPY	17.28 %
19 - 24	10,991	36.22 %	20,862,271,796 JPY	39.02 %
25 - 30	7,542	24.85 %	12,835,900,049 JPY	24.00 %
31 - 36	2,693	8.87 %	3,665,522,267 JPY	6.85 %
37 - 42	1,044	3.44 %	1,157,755,841 JPY	2.17 %
43 - 48	717	2.36 %	697,873,140 JPY	1.31 %
49 - 54	814	2.68 %	688,924,590 JPY	1.29 %
55 - 60	340	1.12 %	219,304,258 JPY	0.41 %
61 - 66	26	0.09 %	11,667,152 JPY	0.02 %
67 - 72	6	0.02 %	2,012,862 JPY	0.00 %
73 - 84	0	0.00 %	0 JPY	0.00 %
<b>Total</b>	<b>30,348</b>	<b>100.00 %</b>	<b>53,472,357,158 JPY</b>	<b>100.00 %</b>

<b>Statistics</b>	
<b>Minimum</b> Seasoning in months	7
<b>Maximum</b> Seasoning in months	71
<b>Weighted Average</b> Seasoning in months	22.97

**Distribution by Type of Car**
**Type of Car**

Type of Car	Number of Loans	Percentage of Loans	Outstanding Discounted Principal Balance	Percentage of Balance
New	20,242	66.70 %	41,474,398,769 JPY	77.56 %
Used	10,106	33.30 %	11,997,958,389 JPY	22.44 %
<b>Total</b>	<b>30,348</b>	<b>100.00 %</b>	<b>53,472,357,158 JPY</b>	<b>100.00 %</b>

**Type of Car: Only Balloon Loans**

Type of Car	Number of Loans	Percentage of Loans	Outstanding Discounted Principal Balance	Percentage of Balance
New	18,945	78.31 %	39,835,204,427 JPY	83.49 %
Used	5,246	21.69 %	7,879,975,399 JPY	16.51 %
<b>Total</b>	<b>24,191</b>	<b>100.00 %</b>	<b>47,715,179,826 JPY</b>	<b>100.00 %</b>

**Type of Car: Only Equal Instalment Loans**

Type of Car	Number of Loans	Percentage of Loans	Outstanding Discounted Principal Balance	Percentage of Balance
New	1,297	21.07 %	1,639,194,342 JPY	28.47 %
Used	4,860	78.93 %	4,117,982,990 JPY	71.53 %
<b>Total</b>	<b>6,157</b>	<b>100.00 %</b>	<b>5,757,177,332 JPY</b>	<b>100.00 %</b>

**Distribution by Brand and Model**

Make	Model	Number of Loans	Percentage of Loans	Outstanding Discounted Principal Balance	Percentage of Balance
<b>Audi</b>	A1	1,023	3.37 %	1,309,756,124 JPY	2.45 %
	A3	2,766	9.11 %	4,643,322,463 JPY	8.68 %
	A4	2,289	7.54 %	5,370,705,277 JPY	10.04 %
	A5	498	1.64 %	1,228,693,442 JPY	2.30 %
	A6	650	2.14 %	1,716,709,577 JPY	3.21 %
	A7	265	0.87 %	911,178,468 JPY	1.70 %
	A8	79	0.26 %	299,989,121 JPY	0.56 %
	S1	99	0.33 %	208,608,386 JPY	0.39 %
	S3	348	1.15 %	931,731,958 JPY	1.74 %
	S4	91	0.30 %	276,732,143 JPY	0.52 %
	S5	59	0.19 %	188,431,236 JPY	0.35 %
	S6	38	0.13 %	162,967,104 JPY	0.30 %
	S7	26	0.09 %	92,091,862 JPY	0.17 %
	S8	19	0.06 %	90,456,457 JPY	0.17 %
	RS3	40	0.13 %	146,288,957 JPY	0.27 %
	RS4	16	0.05 %	50,950,690 JPY	0.10 %
	RS5	14	0.05 %	57,923,934 JPY	0.11 %
	RS6	14	0.05 %	66,322,954 JPY	0.12 %
	RS7	12	0.04 %	61,924,901 JPY	0.12 %
	Q2	60	0.20 %	174,956,315 JPY	0.33 %
	Q3	889	2.93 %	1,869,115,470 JPY	3.50 %
	Q5	564	1.86 %	1,530,589,324 JPY	2.86 %
	Q7	193	0.64 %	907,337,270 JPY	1.70 %
	RSQ3	23	0.08 %	91,544,599 JPY	0.17 %
	TT	798	2.63 %	2,079,723,129 JPY	3.89 %
	R8	11	0.04 %	56,072,432 JPY	0.10 %
	AUDI OTHERS	0	0.00 %	0 JPY	0.00 %
	<b>Subtotal</b>	<b>10,884</b>	<b>35.86 %</b>	<b>24,524,123,593 JPY</b>	<b>45.86 %</b>
<b>Bentley</b>	ARNAGE	0	0.00 %	0 JPY	0.00 %
	AZURE	0	0.00 %	0 JPY	0.00 %
	BENTAYGA	0	0.00 %	0 JPY	0.00 %
	CONTINENTAL	11	0.04 %	52,810,985 JPY	0.10 %
	FLYING SPUR	1	0.00 %	7,382,447 JPY	0.01 %
	MULSANNE	1	0.00 %	3,478,229 JPY	0.01 %
	BENTLEY OTHERS	0	0.00 %	0 JPY	0.00 %
		<b>Subtotal</b>	<b>13</b>	<b>0.04 %</b>	<b>63,671,661 JPY</b>
<b>Lamborghini</b>	AVENTADOR	0	0.00 %	0 JPY	0.00 %
	DIABLO	0	0.00 %	0 JPY	0.00 %
	GALLARDO	1	0.00 %	5,522,888 JPY	0.01 %
	HURACÁN	1	0.00 %	1,864,012 JPY	0.00 %
	MULCIELAGO	0	0.00 %	0 JPY	0.00 %
	LAMBORGHINI OTHERS	0	0.00 %	0 JPY	0.00 %
		<b>Subtotal</b>	<b>2</b>	<b>0.01 %</b>	<b>7,386,900 JPY</b>
<b>VW</b>	ARTEON	1	0.00 %	4,050,349 JPY	0.01 %
	BEETLE	1,956	6.45 %	2,790,680,682 JPY	5.22 %
	BORA	0	0.00 %	0 JPY	0.00 %
	EOS	0	0.00 %	0 JPY	0.00 %
	GOLF	7,434	24.50 %	11,765,775,820 JPY	22.00 %
	JETTA	9	0.03 %	3,021,168 JPY	0.01 %
	LUPO	1	0.00 %	1,259,595 JPY	0.00 %
	PASSAT	1,711	5.64 %	3,217,991,107 JPY	6.02 %
	POLO	4,115	13.56 %	4,786,509,279 JPY	8.95 %
	SCIROCCO	40	0.13 %	39,820,977 JPY	0.07 %
	SHARAN	673	2.22 %	1,218,701,010 JPY	2.28 %
	TIGUAN	649	2.14 %	1,238,956,215 JPY	2.32 %
	TOUAREG	70	0.23 %	159,228,276 JPY	0.30 %
	TOURAN	1,512	4.98 %	2,684,776,178 JPY	5.02 %
	UP	1,267	4.17 %	957,872,670 JPY	1.79 %
	VENTO	0	0.00 %	0 JPY	0.00 %
	VW OTHERS	0	0.00 %	0 JPY	0.00 %
	<b>Subtotal</b>	<b>19,438</b>	<b>64.05 %</b>	<b>28,868,643,326 JPY</b>	<b>53.98 %</b>
<b>Non VW Group Vehicles</b>		11	0.04 %	8,531,678 JPY	0.02 %
	<b>Subtotal</b>	<b>11</b>	<b>0.04 %</b>	<b>8,531,678 JPY</b>	<b>0.02 %</b>
	<b>Total</b>	<b>30,348</b>	<b>100.00 %</b>	<b>53,472,357,158 JPY</b>	<b>100.00 %</b>

**Geographic Distribution by Prefecture**

Prefecture	Number of Loans	Percentage of Loans	Outstanding Discounted Principal Balance	Percentage of Balance
Tokyo	4,624	15.24 %	9,272,220,490 JPY	17.34 %
Kanagawa	2,964	9.77 %	5,386,896,762 JPY	10.07 %
Aichi	2,207	7.27 %	3,736,482,321 JPY	6.99 %
Saitama	2,017	6.65 %	3,496,962,884 JPY	6.54 %
Osaka	1,787	5.89 %	3,345,629,901 JPY	6.26 %
Chiba	1,352	4.45 %	2,333,260,044 JPY	4.36 %
Fukuoka	1,274	4.20 %	2,295,816,634 JPY	4.29 %
Hokkaido	1,135	3.74 %	2,170,151,073 JPY	4.06 %
Hyogo	1,178	3.88 %	2,029,841,401 JPY	3.80 %
Shizuoka	901	2.97 %	1,564,647,837 JPY	2.93 %
Ibaraki	942	3.10 %	1,538,890,493 JPY	2.88 %
Hiroshima	716	2.36 %	1,149,274,952 JPY	2.15 %
Tochigi	659	2.17 %	1,136,937,072 JPY	2.13 %
Kyoto	593	1.95 %	987,060,809 JPY	1.85 %
Miyagi	556	1.83 %	920,048,933 JPY	1.72 %
Gunma	594	1.96 %	916,784,495 JPY	1.71 %
Gifu	464	1.53 %	751,225,690 JPY	1.40 %
Okayama	445	1.47 %	753,276,700 JPY	1.41 %
Nagano	456	1.50 %	731,719,568 JPY	1.37 %
Mie	391	1.29 %	620,191,195 JPY	1.16 %
Fukushima	346	1.14 %	544,194,254 JPY	1.02 %
Yamaguchi	309	1.02 %	511,531,208 JPY	0.96 %
Niigata	342	1.13 %	511,176,892 JPY	0.96 %
Nara	263	0.87 %	456,770,061 JPY	0.85 %
Oita	282	0.93 %	453,383,326 JPY	0.85 %
Yamanashi	224	0.74 %	403,066,968 JPY	0.75 %
Ishikawa	251	0.83 %	397,152,367 JPY	0.74 %
Shiga	239	0.79 %	385,329,300 JPY	0.72 %
Kumamoto	243	0.80 %	375,710,344 JPY	0.70 %
Kagoshima	215	0.71 %	374,053,068 JPY	0.70 %
Wakayama	204	0.67 %	373,437,735 JPY	0.70 %
Toyama	231	0.76 %	360,206,952 JPY	0.67 %
Fukui	192	0.63 %	347,838,140 JPY	0.65 %
Yamagata	210	0.69 %	325,134,317 JPY	0.61 %
Kagawa	175	0.58 %	264,939,372 JPY	0.50 %
Iwate	149	0.49 %	261,247,165 JPY	0.49 %
Nagasaki	147	0.48 %	251,468,711 JPY	0.47 %
Tokushima	144	0.47 %	250,222,047 JPY	0.47 %
Miyazaki	139	0.46 %	237,155,498 JPY	0.44 %
Saga	132	0.43 %	223,399,800 JPY	0.42 %
Ehime	132	0.43 %	194,027,078 JPY	0.36 %
Shimane	104	0.34 %	189,342,007 JPY	0.35 %
Aomori	113	0.37 %	168,416,932 JPY	0.31 %
Akita	100	0.33 %	162,677,266 JPY	0.30 %
Tottori	96	0.32 %	145,722,009 JPY	0.27 %
Kouchi	64	0.21 %	98,948,191 JPY	0.19 %
Okinawa	47	0.15 %	68,486,896 JPY	0.13 %
<b>Total</b>	<b>30,348</b>	<b>100.00 %</b>	<b>53,472,357,158 JPY</b>	<b>100.00 %</b>



### Distribution by Obligor Concentration

#### Distribution of Loan Contracts and Vehicles per Obligor

Contract Concentration	Number of Customers	Percentage of Customers	Number of Loans	Percentage of Loans	Outstanding Discounted Principal Balance	Percentage of Balance
1	29,237	96.85 %	29,237	96.34 %	51,130,715,419 JPY	95.62 %
2	894	2.96 %	1,035	3.41 %	2,153,582,501 JPY	4.03 %
3	48	0.16 %	60	0.20 %	154,775,166 JPY	0.29 %
4	8	0.03 %	15	0.05 %	31,069,204 JPY	0.06 %
5	0	0.00 %	0	0.00 %	0 JPY	0.00 %
6 - 10	1	0.00 %	1	0.00 %	2,214,868 JPY	0.00 %
11 or more	0	0.00 %	0	0.00 %	0 JPY	0.00 %
<b>Total</b>	<b>30,188</b>	<b>100.00 %</b>	<b>30,348</b>	<b>100.00 %</b>	<b>53,472,357,158 JPY</b>	<b>100.00 %</b>

#### Top 20 Obligor

Number	Number of Contracts	Outstanding Discounted Principal Balance	Percentage of Balance
1	2	13,622,859 JPY	0.03 %
2	2	12,690,245 JPY	0.02 %
3	2	12,357,708 JPY	0.02 %
4	2	12,238,547 JPY	0.02 %
5	2	11,691,701 JPY	0.02 %
6	2	10,495,926 JPY	0.02 %
7	1	9,343,577 JPY	0.02 %
8	1	9,219,147 JPY	0.02 %
9	1	9,194,558 JPY	0.02 %
10	1	9,119,476 JPY	0.02 %
11	2	8,897,954 JPY	0.02 %
12	2	8,816,532 JPY	0.02 %
13	2	8,714,008 JPY	0.02 %
14	1	8,651,741 JPY	0.02 %
15	1	8,446,117 JPY	0.02 %
16	1	8,416,263 JPY	0.02 %
17	1	8,255,340 JPY	0.02 %
18	1	8,189,724 JPY	0.02 %
19	1	8,093,227 JPY	0.02 %
20	2	8,087,888 JPY	0.02 %
<b>Total 1 -20</b>	<b>30</b>	<b>194,542,538 JPY</b>	<b>0.36 %</b>

Remarks:

Figures above are calculated based on each of the Sub-Servicers respectively and not across both of the Sub-Servicers.

### Distribution by Contract Start Month

Origination Month	Number of Loans	Percentage of Loans	Outstanding Discounted Principal Balance	Percentage of Balance
07.2012	1	0.00 %	168,586 JPY	0.00 %
08.2012	1	0.00 %	37,860 JPY	0.00 %
09.2012	3	0.01 %	1,498,453 JPY	0.00 %
10.2012	0	0.00 %	0 JPY	0.00 %
11.2012	1	0.00 %	307,963 JPY	0.00 %
12.2012	6	0.02 %	2,748,706 JPY	0.01 %
01.2013	5	0.02 %	897,798 JPY	0.00 %
02.2013	4	0.01 %	2,490,633 JPY	0.00 %
03.2013	9	0.03 %	5,100,876 JPY	0.01 %
04.2013	2	0.01 %	429,139 JPY	0.00 %
05.2013	0	0.00 %	0 JPY	0.00 %
06.2013	3	0.01 %	1,298,488 JPY	0.00 %
07.2013	59	0.19 %	25,959,966 JPY	0.05 %
08.2013	47	0.15 %	33,590,416 JPY	0.06 %
09.2013	84	0.28 %	46,732,214 JPY	0.09 %
10.2013	68	0.22 %	50,567,144 JPY	0.09 %
11.2013	79	0.26 %	61,156,030 JPY	0.11 %
12.2013	141	0.46 %	113,654,128 JPY	0.21 %
01.2014	91	0.30 %	77,425,685 JPY	0.14 %
02.2014	166	0.55 %	141,715,732 JPY	0.27 %
03.2014	248	0.82 %	206,840,227 JPY	0.39 %
04.2014	67	0.22 %	61,619,310 JPY	0.12 %
05.2014	101	0.33 %	87,669,508 JPY	0.16 %
06.2014	138	0.45 %	126,612,334 JPY	0.24 %
07.2014	111	0.37 %	97,353,845 JPY	0.18 %
08.2014	86	0.28 %	87,874,800 JPY	0.16 %
09.2014	159	0.52 %	162,964,055 JPY	0.30 %
10.2014	105	0.35 %	98,068,447 JPY	0.18 %
11.2014	118	0.39 %	124,999,659 JPY	0.23 %
12.2014	176	0.58 %	205,676,752 JPY	0.38 %
01.2015	126	0.42 %	126,849,552 JPY	0.24 %
02.2015	209	0.69 %	235,339,189 JPY	0.44 %
03.2015	242	0.80 %	264,449,961 JPY	0.49 %
04.2015	104	0.34 %	107,954,870 JPY	0.20 %
05.2015	187	0.62 %	217,485,517 JPY	0.41 %
06.2015	196	0.65 %	241,597,663 JPY	0.45 %
07.2015	440	1.45 %	521,053,784 JPY	0.97 %
08.2015	485	1.60 %	629,988,797 JPY	1.18 %
09.2015	717	2.36 %	1,028,239,516 JPY	1.92 %
10.2015	396	1.30 %	547,504,518 JPY	1.02 %
11.2015	459	1.51 %	697,137,989 JPY	1.30 %
12.2015	997	3.29 %	1,512,044,080 JPY	2.83 %
01.2016	901	2.97 %	1,488,290,583 JPY	2.78 %
02.2016	1,293	4.26 %	2,188,763,682 JPY	4.09 %
03.2016	2,004	6.60 %	3,406,992,072 JPY	6.37 %
04.2016	994	3.28 %	1,825,079,287 JPY	3.41 %
05.2016	1,353	4.46 %	2,414,730,345 JPY	4.52 %
06.2016	1,570	5.17 %	3,059,922,626 JPY	5.72 %
07.2016	1,561	5.14 %	2,742,242,250 JPY	5.13 %
08.2016	1,788	5.89 %	3,291,413,077 JPY	6.16 %
09.2016	2,390	7.88 %	4,551,492,281 JPY	8.51 %
10.2016	1,544	5.09 %	2,977,008,633 JPY	5.57 %
11.2016	2,138	7.04 %	4,240,192,929 JPY	7.93 %
12.2016	795	2.62 %	1,567,867,508 JPY	2.93 %
01.2017	646	2.13 %	1,362,659,833 JPY	2.55 %
02.2017	786	2.59 %	1,661,931,906 JPY	3.11 %
03.2017	1,181	3.89 %	2,477,011,665 JPY	4.63 %
04.2017	462	1.52 %	993,903,280 JPY	1.86 %
05.2017	525	1.73 %	1,178,954,785 JPY	2.20 %
06.2017	580	1.91 %	1,300,490,768 JPY	2.43 %
07.2017	325	1.07 %	687,981,805 JPY	1.29 %
08.2017	303	1.00 %	713,185,784 JPY	1.33 %
09.2017	335	1.10 %	796,984,068 JPY	1.49 %
10.2017	165	0.54 %	393,742,081 JPY	0.74 %
11.2017	72	0.24 %	196,411,720 JPY	0.37 %
12.2017	0	0.00 %	0 JPY	0.00 %
01.2018	0	0.00 %	0 JPY	0.00 %
02.2018	0	0.00 %	0 JPY	0.00 %
03.2018	0	0.00 %	0 JPY	0.00 %
04.2018	0	0.00 %	0 JPY	0.00 %
05.2018	0	0.00 %	0 JPY	0.00 %
06.2018	0	0.00 %	0 JPY	0.00 %
<b>Total</b>	<b>30,348</b>	<b>100.00 %</b>	<b>53,472,357,158 JPY</b>	<b>100.00 %</b>

### Distribution by Contract End Month

Maturity Month	Number of Loans	Percentage of Loans	Outstanding Discounted Principal Balance	Percentage of Balance
07.2018	506	1.67 %	364,192,092 JPY	0.68 %
08.2018	463	1.53 %	417,667,011 JPY	0.78 %
09.2018	747	2.46 %	703,458,355 JPY	1.32 %
10.2018	413	1.36 %	350,247,406 JPY	0.66 %
11.2018	528	1.74 %	479,565,910 JPY	0.90 %
12.2018	811	2.67 %	951,460,987 JPY	1.78 %
01.2019	514	1.69 %	671,912,468 JPY	1.26 %
02.2019	712	2.35 %	921,221,449 JPY	1.72 %
03.2019	1,159	3.82 %	1,631,646,383 JPY	3.05 %
04.2019	525	1.73 %	856,954,468 JPY	1.60 %
05.2019	705	2.32 %	1,118,367,957 JPY	2.09 %
06.2019	919	3.03 %	1,603,729,239 JPY	3.00 %
07.2019	678	2.23 %	1,162,670,896 JPY	2.17 %
08.2019	712	2.35 %	1,248,085,017 JPY	2.33 %
09.2019	1,058	3.49 %	1,997,510,142 JPY	3.74 %
10.2019	712	2.35 %	1,298,134,049 JPY	2.43 %
11.2019	939	3.09 %	1,886,101,356 JPY	3.53 %
12.2019	519	1.71 %	928,838,973 JPY	1.74 %
01.2020	414	1.36 %	718,325,277 JPY	1.34 %
02.2020	582	1.92 %	993,509,653 JPY	1.86 %
03.2020	795	2.62 %	1,425,704,992 JPY	2.67 %
04.2020	284	0.94 %	552,422,564 JPY	1.03 %
05.2020	404	1.33 %	730,461,446 JPY	1.37 %
06.2020	442	1.46 %	820,895,840 JPY	1.54 %
07.2020	322	1.06 %	521,042,243 JPY	0.97 %
08.2020	405	1.33 %	741,901,845 JPY	1.39 %
09.2020	469	1.55 %	846,370,157 JPY	1.58 %
10.2020	277	0.91 %	477,651,266 JPY	0.89 %
11.2020	318	1.05 %	548,514,496 JPY	1.03 %
12.2020	411	1.35 %	668,738,862 JPY	1.25 %
01.2021	515	1.70 %	888,753,291 JPY	1.66 %
02.2021	778	2.56 %	1,408,840,934 JPY	2.63 %
03.2021	1,102	3.63 %	1,952,904,244 JPY	3.65 %
04.2021	544	1.79 %	994,575,775 JPY	1.86 %
05.2021	734	2.42 %	1,304,843,928 JPY	2.44 %
06.2021	796	2.62 %	1,547,320,833 JPY	2.89 %
07.2021	809	2.67 %	1,562,972,440 JPY	2.92 %
08.2021	924	3.04 %	1,846,363,167 JPY	3.45 %
09.2021	1,225	4.04 %	2,511,057,054 JPY	4.70 %
10.2021	767	2.53 %	1,645,681,266 JPY	3.08 %
11.2021	1,020	3.36 %	2,264,042,759 JPY	4.23 %
12.2021	358	1.18 %	785,377,378 JPY	1.47 %
01.2022	316	1.04 %	748,838,756 JPY	1.40 %
02.2022	374	1.23 %	860,726,530 JPY	1.61 %
03.2022	588	1.94 %	1,299,222,491 JPY	2.43 %
04.2022	259	0.85 %	560,093,640 JPY	1.05 %
05.2022	294	0.97 %	677,198,351 JPY	1.27 %
06.2022	299	0.99 %	717,756,308 JPY	1.34 %
07.2022	184	0.61 %	441,306,950 JPY	0.83 %
08.2022	196	0.65 %	473,768,251 JPY	0.89 %
09.2022	188	0.62 %	486,941,760 JPY	0.91 %
10.2022	99	0.33 %	256,507,021 JPY	0.48 %
11.2022	60	0.20 %	147,944,909 JPY	0.28 %
12.2022	26	0.09 %	62,700,748 JPY	0.12 %
01.2023	14	0.05 %	31,724,220 JPY	0.06 %
02.2023	19	0.06 %	49,118,237 JPY	0.09 %
03.2023	22	0.07 %	48,916,776 JPY	0.09 %
04.2023	10	0.03 %	23,038,379 JPY	0.04 %
05.2023	19	0.06 %	55,712,444 JPY	0.10 %
06.2023	16	0.05 %	35,561,904 JPY	0.07 %
07.2023	6	0.02 %	15,726,986 JPY	0.03 %
08.2023	7	0.02 %	20,434,261 JPY	0.04 %
09.2023	13	0.04 %	35,937,121 JPY	0.07 %
10.2023	10	0.03 %	26,184,281 JPY	0.05 %
11.2023	2	0.01 %	3,919,358 JPY	0.01 %
12.2023	2	0.01 %	8,810,780 JPY	0.02 %
01.2024	1	0.00 %	2,644,853 JPY	0.00 %
02.2024	2	0.01 %	6,183,283 JPY	0.01 %
03.2024	1	0.00 %	4,310,629 JPY	0.01 %
04.2024	1	0.00 %	3,170,403 JPY	0.01 %
05.2024	0	0.00 %	0 JPY	0.00 %
06.2024	0	0.00 %	0 JPY	0.00 %
07.2024	1	0.00 %	4,168,917 JPY	0.01 %
08.2024	0	0.00 %	0 JPY	0.00 %
09.2024	1	0.00 %	2,718,104 JPY	0.01 %
10.2024	3	0.01 %	11,034,639 JPY	0.02 %
<b>Total</b>	<b>30,348</b>	<b>100.00 %</b>	<b>53,472,357,158 JPY</b>	<b>100.00 %</b>

**Distribution by Monthly Payment**

Monthly Payment	Number of Loans	Percentage of Loans	Outstanding Discounted Principal Balance	Percentage of Balance
<= 10,000 JPY	1,529	5.04 %	1,717,705,766 JPY	3.21 %
10,001 JPY - 20,000 JPY	5,691	18.75 %	6,959,647,151 JPY	13.02 %
20,001 JPY - 30,000 JPY	8,211	27.06 %	11,693,244,197 JPY	21.87 %
30,001 JPY - 40,000 JPY	6,113	20.14 %	10,645,531,705 JPY	19.91 %
40,001 JPY - 50,000 JPY	3,452	11.37 %	7,040,970,181 JPY	13.17 %
50,001 JPY - 60,000 JPY	1,982	6.53 %	4,568,424,888 JPY	8.54 %
60,001 JPY - 70,000 JPY	1,063	3.50 %	2,784,830,520 JPY	5.21 %
70,001 JPY - 80,000 JPY	607	2.00 %	1,740,138,157 JPY	3.25 %
80,001 JPY - 90,000 JPY	438	1.44 %	1,361,961,959 JPY	2.55 %
90,001 JPY - 100,000 JPY	352	1.16 %	1,174,947,299 JPY	2.20 %
100,001 JPY - 110,000 JPY	240	0.79 %	843,052,304 JPY	1.58 %
110,001 JPY - 120,000 JPY	164	0.54 %	660,897,024 JPY	1.24 %
120,001 JPY - 130,000 JPY	134	0.44 %	566,795,663 JPY	1.06 %
130,001 JPY - 140,000 JPY	83	0.27 %	358,696,930 JPY	0.67 %
140,001 JPY - 150,000 JPY	61	0.20 %	290,032,523 JPY	0.54 %
>= 150,001 JPY	228	0.75 %	1,065,480,891 JPY	1.99 %
<b>Total</b>	<b>30,348</b>	<b>100.00 %</b>	<b>53,472,357,158 JPY</b>	<b>100.00 %</b>

**Distribution by Bonus Payment**

Bonus Payment	Number of Loans	Percentage of Loans	Outstanding Discounted Principal Balance	Percentage of Balance
No Bonus Payment	18,190	59.94 %	31,394,504,625 JPY	58.71 %
1 JPY - 25,000 JPY	277	0.91 %	356,721,349 JPY	0.67 %
25,001 JPY - 50,000 JPY	3,050	10.05 %	4,409,904,266 JPY	8.25 %
50,001 JPY - 75,000 JPY	1,069	3.52 %	1,725,054,801 JPY	3.23 %
75,001 JPY - 100,000 JPY	4,206	13.86 %	7,495,588,048 JPY	14.02 %
100,001 JPY - 125,000 JPY	523	1.72 %	977,341,611 JPY	1.83 %
125,001 JPY - 150,000 JPY	1,636	5.39 %	3,505,782,879 JPY	6.56 %
150,001 JPY - 175,000 JPY	179	0.59 %	388,659,953 JPY	0.73 %
175,001 JPY - 200,000 JPY	755	2.49 %	1,858,255,999 JPY	3.48 %
200,001 JPY - 225,000 JPY	46	0.15 %	102,266,338 JPY	0.19 %
225,001 JPY - 250,000 JPY	194	0.64 %	534,594,322 JPY	1.00 %
250,001 JPY - 275,000 JPY	16	0.05 %	47,615,285 JPY	0.09 %
275,001 JPY - 300,000 JPY	129	0.43 %	403,745,124 JPY	0.76 %
300,001 JPY - 325,000 JPY	7	0.02 %	23,118,020 JPY	0.04 %
325,001 JPY - 350,000 JPY	25	0.08 %	78,979,252 JPY	0.15 %
350,001 JPY - 375,000 JPY	5	0.02 %	19,921,079 JPY	0.04 %
375,001 JPY - 400,000 JPY	17	0.06 %	73,811,596 JPY	0.14 %
400,001 JPY - 425,000 JPY	0	0.00 %	0 JPY	0.00 %
425,001 JPY - 450,000 JPY	6	0.02 %	21,817,082 JPY	0.04 %
450,001 JPY - 475,000 JPY	0	0.00 %	0 JPY	0.00 %
475,001 JPY - 500,000 JPY	15	0.05 %	44,964,595 JPY	0.08 %
500,001 JPY or more	3	0.01 %	9,710,934 JPY	0.02 %
<b>Total</b>	<b>30,348</b>	<b>100.00 %</b>	<b>53,472,357,158 JPY</b>	<b>100.00 %</b>

**Distribution by Motor Type**

Motor Type	Number of Loans	Percentage of Loans	Outstanding Discounted Principal Balance	Percentage of Balance
EA 189	0	0.00 %	0 JPY	0.00 %
Other	30,348	100.00 %	53,472,357,158 JPY	100.00 %
<b>Total</b>	<b>30,348</b>	<b>100.00 %</b>	<b>53,472,357,158 JPY</b>	<b>100.00 %</b>

## Disclaimer

This presentation contains forward-looking statements and information on the business development of the Volkswagen Group. These statements may be spoken or written and can be recognized by terms such as "expects", "anticipates", "intends", "plans", "believes", "seeks", "estimates", "will", or words with similar meaning. These statements are based on assumptions relating to the development of the economies of individual countries, and in particular of the automotive industry, which we have made on the basis of the information available to us and which we consider to be realistic at the time of going to press. The estimates given involve a degree of risk, and the actual developments may differ from those forecast.

Consequently, any unexpected fall in demand or economic stagnation in our key sales markets, such as in Western Europe (and especially Germany) or in the USA, Brazil or China, will have a corresponding impact on the development of our business. The same applies in the event of a significant shift in current exchange rates relative to the US dollar, sterling, yen, Brazilian real, Chinese renminbi and Czech koruna.

If any of these or other risks occur, or if the assumptions underlying any of these statements prove incorrect, the actual results may significantly differ from those expressed or implied by such statements.

We do not update forward-looking statements retrospectively. Such statements are valid on the date of publication and can be superceded.

This information does not constitute an offer to exchange or sell or an offer to exchange or buy any securities.