

**Deal Name:** Driver Japan six

**Originator:** Volkswagen Financial Services Japan Ltd.  
Gotenyama Trust Tower 17F  
7-35 Kitashinagawa 4-chome, Shinagawa-ku  
Tokyo 140-0001, Japan

**Reporting Entity:** Volkswagen Financial Services Japan Ltd.  
Treasury Dept.  
Gotenyama Trust Tower 17F  
7-35 Kitashinagawa 4-chome, Shinagawa-ku  
Tokyo 140-0001, Japan  
Tel No.: +81(0)3-5792-7261  
Fax No.: +81(0)3-3280-7365  
E-mail: vwfsjp.abs@vwfs.com

**Trustor of the First Trust:  
Servicer:** Volkswagen Financial Services Japan Ltd.

**Trustee of the First Trust:  
Trustee of the Second Trust:** Deutsche Trust Company Limited Japan  
Sanno Park Tower, 11-1,  
Nagatacho 2-chome, Chiyoda-ku,  
Tokyo, 100-6172, Japan  
Trust Business Administration Department  
Tel No.: +81(0)3-5156-5637  
Fax No.: +81(0)3-5156-5658  
E-mail: DB\_Trust\_Trust@list.db.com



## Contents

Page	Tables of Contents
1	<a href="#">Front Page</a>
2	<a href="#">Contents</a>
3	<a href="#">Deal Overview</a>
4	<a href="#">Deal Overview: Counterparties I</a>
5	<a href="#">Deal Overview: Counterparties II</a>
6	<a href="#">Information regarding the TBI and ABL to the Second Trust</a>
7	<a href="#">Pool Information</a>
8	<a href="#">Available Distribution</a>
9	<a href="#">Waterfall</a>
10	<a href="#">Credit Enhancement</a>
11	<a href="#">Cumulative Gross Loss Ratio &amp; Performance Trigger</a>
12	<a href="#">Cumulative Gross Loss Ratio &amp; Performance Trigger (Chart)</a>
13	<a href="#">Default &amp; Delinquencies</a>
14	<a href="#">Run Out Schedule (Previous)</a>
15	<a href="#">Run Out Schedule</a>
16	<a href="#">Expected Amortization to the Second Trust</a>
17	<a href="#">Sub-Servicer</a>
18	<a href="#">Brand</a>
19	<a href="#">New and Used</a>
20	<a href="#">Product Type</a>
21	<a href="#">RV</a>
22	<a href="#">Brand New and Used</a>
23	<a href="#">Customer Type</a>
24	<a href="#">Outstanding Discounted Principal Balance</a>
25	<a href="#">Original Principal Amount</a>
26	<a href="#">Interest Rate paid by the Obligor</a>
27	<a href="#">Original Term</a>
28	<a href="#">Remaining Term</a>
29	<a href="#">Seasoning</a>
30	<a href="#">Type of Car</a>
31	<a href="#">Brand and Model</a>
32	<a href="#">Geographic Dist. by Prefecture</a>
33	<a href="#">Obligor Concentration</a>
34	<a href="#">Contract Start Month</a>
35	<a href="#">Contract End Month</a>
36	<a href="#">Monthly payment</a>
37	<a href="#">Bonus payment</a>
38	<a href="#">Mortor Type</a>

**Deal Overview**

<b>Cut Off Date:</b>	2017/02/10		
<b>Trust Commencement Date:</b>	2017/02/23	<b>Legal Maturity of the First Trust:</b>	2025/06/27
<b>Monthly Period:</b>	2018/05/11	to	2018/06/10
<b>Reporting Date:</b>	2018/06/15		
<b>Reporting Frequency:</b>	monthly		
<b>Period No.:</b>	16		
<b>Remittance Date:</b>	2018/06/22		
<b>Advance Payment Date:</b>	2018/06/22		
<b>Cash Adjustment Date:</b>	2018/06/22		
<b>Additional Entrustment Date:</b>	2018/06/26		
<b>Trust Calculation Date:</b>	2018/06/26		
<b>Trust Calculation Period:</b>	2018/05/25	to	2018/06/26
<b>First Trust Payment Date:</b>	2018/06/27		
<b>Second Trust Payment Date:</b>	2018/06/28		
<b>Interest Calculation Period:</b>	2018/05/29	to	2018/06/28
<b>Next Reporting Date:</b>	2018/07/18		

**Pool information at the Initial Cut off Date**

	<b>Number of Contracts</b>	<b>Outstanding Discounted Principal Balance</b>	<b>Outstanding Nominal Balance</b>
Outstanding Pool	30,757	64,171,706,472 JPY	67,028,993,300 JPY

<b>Credit Type</b>	<b>Percentage of Loans</b>	<b>Outstanding Discounted Principal Balance</b>	<b>Percentage of Balance</b>
Balloon	76.13 %	55,443,642,000 JPY	86.40 %
Equal Instalment Loan	23.87 %	8,728,064,472 JPY	13.60 %
<b>Total</b>	<b>100.00 %</b>	<b>64,171,706,472 JPY</b>	<b>100.00 %</b>

<b>Type of Car</b>	<b>Percentage of Loans</b>	<b>Outstanding Discounted Principal Balance</b>	<b>Percentage of Balance</b>
New	66.66 %	49,506,381,305 JPY	77.15 %
Used	33.34 %	14,665,325,167 JPY	22.85 %
<b>Total</b>	<b>100.00 %</b>	<b>64,171,706,472 JPY</b>	<b>100.00 %</b>

### Deal Overview: Counterparties I

**Joint Lead Managers:**

**Shinsei Securities Co., Ltd.**  
 Nihonbashi Muromachi Nomura Building, 4-3,  
 Nihonbashi-muromachi 2-chome,  
 Chuo-ku,  
 Tokyo 103-0022, Japan

**BNP Paribas Securities (Japan) Limited**  
 GranTokyo North Tower, 9-1,  
 Marunouchi 1-chome,  
 Chiyoda-ku,  
 Tokyo 100-6740, Japan

**Trust Management Account Bank:**

**MUFG Bank, Ltd.**  
 4-2 Toranomom 1-chome,  
 Minato-ku  
 Tokyo 105-0001, Japan

Rating								
Moody's			Fitch			R&I		
Long Term	Short Term	Outlook	Long Term	Short Term	Outlook	Long Term	Short Term	Outlook
n.a.	n.a.	n.a.	n.a.	n.a.	n.a.	n.a.	n.a.	n.a.
n.a.	n.a.	n.a.	n.a.	n.a.	n.a.	n.a.	n.a.	n.a.
A1	P-1	Stable	A	F1	Stable	AA-	a-1+	Stable

**Originator:**

**Trustor of the First Trust:**

**Servicer:**

**Volkswagen Financial Services Japan Ltd.**  
 Gotenyama Trust Tower 17F  
 7-35 Kitashinagawa 4-chome, Shinagawa-ku  
 Tokyo 140-0001, Japan

**Trustee of the First Trust:**

**Trustee of the Second Trust:**

**Deutsche Trust Company Limited Japan**  
 Attn.: Driver Japan Six  
 Trust Business Administration Department

**ABL Lender to the First Trust:**

**Trustor of the Second Trust:**

Shinsei Securities Co., Ltd.

**Seller of the Trust Beneficial**

**Interest of the Second Trust**

Shinsei Securities Co., Ltd.  
 BNP Paribas Securities (Japan) Limited

**Deal Overview: Counterparties II**

**Rating Agencies:**

**Moody's SF Japan K.K.**

Attn.: Driver Japan six  
 Structure Finance Group Monitoring Division  
 5-1 Atago 2-chome, Minato-ku  
 Tokyo 105-6220, Japan  
 E-mail: monitor.msfi@moodys.com

**Fitch Ratings Japan Limited**

Attn.: Driver Japan six  
 Structured Finance  
 Kojimachi Crystal City East Wing 3rd Floor,  
 4-8 Kōjimachi, Chiyoda-ku,  
 Tokyo 102-0083, Japan  
 E-mail: tokyo.surveillance@fitchratings.com

**Rating and Investment Information, Inc.**

Attn.: Monitoring Group Department:  
 Structured Finance Department  
 TERRACE SQUARE, 3-22,  
 Kanda Nishikicho, Chiyoda-ku,  
 Tokyo 101-0054, Japan  
 E-mail: sfmonitor@r-i.co.jp

**Rating of VW**

**Volkswagen Financial Services AG**

**Volkswagen AG**

Rating								
Moody's			Fitch			R&I		
Short Term	Long Term	Outlook	Short Term	Long Term	Outlook	Short Term	Long Term	Outlook
P-2	A3	Stable	n.a.	n.a.	n.a.	n.a.	n.a.	n.a.
P-2	A3	Stable	F2	BBB+	Stable	n.a.	n.a.	n.a.

**Information regarding Trust Beneficial Interest of the Second Trust & Asset Backed Loan to the Second Trust**

**Rating Details**

**Rating at Issue Date**

	<u>TBI</u>	<u>ABL</u>
Moody's	Aaa(sf)	Aaa(sf)
Fitch	AAAsf	AAAsf
R&I	AAA	AAA

**Current Rating**

	<u>TBI</u>	<u>ABL</u>
Moody's	Aaa(sf)	Aaa(sf)
Fitch	AAAsf	AAAsf
R&I	AAA	AAA

**Information on TBI & ABL**

	<u>TBI</u>	<u>ABL</u>
Initial Balance	39,200,000,000 JPY	20,800,000,000 JPY
Expected Maturity Date	2021/06/28	2021/06/28
Legal Maturity of the Second Trust	2025/06/30	2025/06/30
Payment Dates	28th	28th
Business Day Convention	Modified Following	Modified Following
Listing	None	—

**Information on Interest**

	<u>TBI</u>	<u>ABL</u>
Fixed/ Floating	Fixed	Fixed
Current Coupon	0.19%	0.19%
Day Count Convention	30/360	30/360

**Selling Restriction**

The holders of the Beneficial Interest and the ABL Lenders\* are prohibited from dividing, assigning, pledging or creating any other security interest over any of the Beneficial Interest and the Asset Backed Loans without the prior written approval of the Trustee of the Second Trust.

(\*)The holders of the Beneficial Interest and the ABL Lenders are limited to specified investors (*tokutei tousehika*) as defined under Paragraph 31 of Article 2 of the Financial Instruments and Exchange Act (Law no.25 of 1948 as amended).

**Clean-Up Call**

VWFS Japan as the Trustor of the First Trust has a right at its option to exercise a clean-up call to repurchase of all, but not part, of the outstanding Auto Loan Receivables from the Trustee of the First Trust on any Trust Calculation Date, the Discounted Principal Balance of all outstanding Auto Loan Receivables is expected to be less than ten percent (10%) of the Discounted Principal Balance of the Initial Auto Loan Receivables as of the Initial Cut-off Date after the distribution pursuant to Article 18.1 of the First Trust Agreement on the immediately following First Trust Payment Date.

**Pool Information**
**Pool Balance on Initial Cut-Off Date**

Status	Number of Contracts	Outstanding Discounted Principal Balance
Normal	30,757	64,171,706,472 JPY
Cancellation	0	0 JPY
Early Termination	0	0 JPY
Defaulted Receivables	0	0 JPY
Matured	0	0 JPY
Refinance Option	0	0 JPY
Repurchase	0	0 JPY
<b>Total</b>	<b>30,757</b>	<b>64,171,706,472 JPY</b>

**Pool Balance before entrustment of Additional Auto Loan Receivables**

Status	Number of Contracts on previous EoP	Outstanding Discounted Principal Balance on previous EoP	Number of Contracts "as Collections" during the relevant Monthly Period*	Outstanding Discounted Principal Balance "as Collections" during the relevant Monthly Period*	Number of Contracts EoP before entrustment of Additional Auto Loan Receivables	Outstanding Discounted Principal Balance EoP before entrustment of Additional Auto Loan Receivables
Normal	32,296	58,349,237,723 JPY	31,379	1,035,873,043 JPY	31,379	56,165,314,785 JPY
Cancellation	0	0 JPY	0	0 JPY	0	0 JPY
Early Termination	0	0 JPY	409	750,548,667 JPY	0	0 JPY
Defaulted Receivables	0	0 JPY	10	23,601,370 JPY	0	0 JPY
Matured	0	0 JPY	410	264,679,197 JPY	0	0 JPY
Refinance Option	0	0 JPY	88	109,220,661 JPY	0	0 JPY
Repurchase	0	0 JPY	0	0 JPY	0	0 JPY
<b>Total</b>	<b>32,296</b>	<b>58,349,237,723 JPY</b>	<b>32,296</b>	<b>2,183,922,938 JPY</b>	<b>31,379</b>	<b>56,165,314,785 JPY</b>

**Pool Balance after entrustment of Additional Auto Loan Receivables**

Status	Number of Contracts EoP before entrustment of Additional Auto Loan Receivables	Outstanding Discounted Principal Balance EoP before entrustment of Additional Auto Loan Receivables	Number of Contracts of Additional Auto Loan Receivables	Outstanding Discounted Principal Balance of Additional Auto Loan Receivables	Number of Contracts EoP after entrustment of Additional Auto Loan Receivables	Outstanding Discounted Principal Balance EoP after entrustment of Additional Auto Loan Receivables
Normal	31,379	56,165,314,785 JPY	0	0 JPY	31,379	56,165,314,785 JPY
Cancellation	0	0 JPY	0	0 JPY	0	0 JPY
Early Termination	0	0 JPY	0	0 JPY	0	0 JPY
Defaulted Receivables	0	0 JPY	0	0 JPY	0	0 JPY
Matured	0	0 JPY	0	0 JPY	0	0 JPY
Refinance Option	0	0 JPY	0	0 JPY	0	0 JPY
Repurchase	0	0 JPY	0	0 JPY	0	0 JPY
<b>Total</b>	<b>31,379</b>	<b>56,165,314,785 JPY</b>	<b>0</b>	<b>0 JPY</b>	<b>31,379</b>	<b>56,165,314,785 JPY</b>

**Limits on Eligibility Criteria**

Status Limits on Eligibility Criteria (v) (including Additional Entrustment)	Current Exposure in %	Limits in % of the aggregate Discounted Principal Balance of the Auto Loan Receivables outstanding	Status
(i) on Used Purchased Vehicle	22.47 %	35 %	-*
(ii) on Non-VW Vehicles	0.02 %	5 %	-*
(iii) on Balloon Payment	46.01 %	50 %	-*

(\* ) not applicable since the Revolving Period ended

### Outstanding Balances

**Monthly Period:** from 2018/05/11 to 2018/06/10  
**Reporting Date:** 2018/06/15  
**Trust Calculation Date:** 2018/06/26

### Outstanding Balances

	Number of Contracts	Aggregate Amount of the Discounted Principal Balance	Aggregate Amount of the Nominal Balance
Balance on the previous EoP	32,296	58,349,237,723 JPY	60,425,894,700 JPY
Balance after counting on the Collections during the relevant Monthly Period	31,379	56,165,314,785 JPY	58,117,017,200 JPY
Balance of Additional Auto Loan Receivables	0	0 JPY	0 JPY
<b>Aggregate Amount of Auto Loan Receivables</b>	<b>31,379</b>	<b>56,165,314,785 JPY</b>	<b>58,117,017,200 JPY</b>

### Collections

	Number of Contracts	Aggregate Amount of the Discounted Principal Balance	Aggregate Amount of the Nominal Balance
Collections: Amortization of current contracts	31,379	1,035,873,043 JPY	1,137,906,900 JPY
Collections: Cancellation	0	0 JPY	0 JPY
Collections: Early Termination	409	750,548,667 JPY	751,447,520 JPY
Collections: Defaulted Receivables	10	23,601,370 JPY	23,651,811 JPY
Collections: Matured	410	264,679,197 JPY	265,037,300 JPY
Collections: Refinance Option	88	109,220,661 JPY	109,370,000 JPY
Collections: Repurchase	0	0 JPY	0 JPY
<b>Sum</b>	<b>32,296</b>	<b>2,183,922,938 JPY</b>	<b>2,287,413,531 JPY</b>

### Available Distribution Amount

	Number of Contracts	Aggregate Amount of the Nominal Balance
(a) the Collections for the Monthly Period with respect to such Trust Calculation Date	32,296	2,287,413,531 JPY
(b) drawings from the Cash Collateral Ledger in accordance with Article 18.3 of the First Trust Agreement	0	0 JPY
(c) net investment earnings from Eligible Investments	0	0 JPY
(d) net proceeds from the sale or disposal of the Trust Assets of the First Trust	0	0 JPY
(e) any amount which is carried over from the immediately preceding Trust Calculation Date	0	0 JPY
<b>Sum</b>	<b>32,296</b>	<b>2,287,413,531 JPY</b>



## Waterfall

There is no distinction between principal and interest, and all collections go through a single priority of payments			
		Payment	Remaining Amount
Available Distribution Amount	plus	2,287,413,531 JPY	2,287,413,531 JPY
(a) an amount necessary for the payment of all taxes and public charges to be paid to the relevant public authority by the immediately following First Trust Payment Date.	less	0 JPY	2,287,413,531 JPY
(b) an amount necessary for the payment of all Fees for the Trustee of the First Trust to be paid to the Trustee of the First Trust by the immediately following First Trust Payment Date.	less	525,142 JPY	2,286,888,389 JPY
(c) an amount necessary for the payment of the Servicing Fee to be paid to the Servicer by the immediately following First Trust Payment Date.	less	52,514,313 JPY	2,234,374,076 JPY
(d) an amount necessary for the payment of the Trust Expenses of the First Trust as provided in Article 23.1 (including the Rating Fees, Costs of the Second Trust and those fees not otherwise covered by (b) or (c) above) to be paid to the relevant party by the immediately following First Trust Payment Date (including any amounts advanced by the Trustee of the First Trust pursuant to Article 23.3)	less	540,586 JPY	2,233,833,490 JPY
(e) an amount necessary for the payment of overdue and unpaid interest on the Asset Backed Loans to the First Trust (if any) to be paid to the Trustee of the Second Trust by the immediately following First Trust Payment Date.	less	0 JPY	2,233,833,490 JPY
(f) an amount necessary for the payment to the Trustee of the Second Trust of interest on the Asset Backed Loan to the First Trust accruing during the relevant Interest Calculation Period	less	8,334,537 JPY	2,225,498,953 JPY
(g) an amount necessary to top up the balance thereof until it is equal to the Cash Collateral Ledger Target Balance	less	0 JPY	2,225,498,953 JPY
(h) (i) prior to the expiration of the Revolving Period: an amount necessary for the redemption of any Additional Senior Beneficial Interest;	less	2,225,498,953 JPY	0 JPY
(ii) following the expiration of the Revolving Period and prior to the occurrence of an Early Amortization Event, an amount necessary for the payment to the Trustee of the Second Trust of the Asset Backed Loan Principal Payment Amount for the relevant First Trust Payment Date.			
(iii) following the occurrence of the Early Amortization Event, an amount necessary for the payment to the Trustee of the Second Trust of the remaining principal balance of the Asset Backed Loan to the First Trust.			
(i) an amount necessary for the payment to the Trustee of the First Trust of any Indemnified Amounts which are not compensated by the Trustor of the First Trust	less	0 JPY	0 JPY
(j) an amount necessary for the payment to the Subordinated Beneficiary of the Subordinated Beneficial Principal Payment Amount for the relevant First Trust Payment Date.	less	0 JPY	0 JPY
(k) (i) prior to the expiration of the Revolving Period, then (x) if a transfer is made under (j) above, such remaining amount will be transferred to the Expenses Distribution Ledger for payment to the Subordinated Beneficiary as a payment of earnings on the Subordinated Beneficial Interest, and such payment shall be made on the First Trust Payment Date immediately following such Trust Calculation Date or (y) if no transfer is made under (j) above, such remaining amount will be carried forward to the next Trust Calculation Date.	less	0 JPY	0 JPY
(ii) following the expiration of the Revolving Period and prior to the occurrence of an Early Amortization Event, then such remaining amount will be transferred to the Expenses Distribution Ledger for payment to the Subordinated Beneficiary as a payment of earnings on the Subordinated Beneficial Interest, and such payment shall be made on the First Trust Payment Date immediately following such Trust Calculation Date.			
(iii) following the occurrence of an Early Amortization Event, the remaining amount in the Trust Collection Ledger will be carried forward to the next Trust Calculation Date.			

## Credit Enhancement

### Subordinated Principal Balance as of the relevant First Trust Payment Date

	Percentage of Aggregate Discounted Principal Balance	Value
(i) the aggregate amount of the Discounted Principal Balance of all Auto Loan Receivables outstanding		56,165,314,785 JPY
(ii) Asset Backed Loan Principal Balance on the relevant First Trust Payment Date		50,413,687,635 JPY
Overcollateralization ( = (i) - (ii) )	10.24 %	5,751,627,150 JPY
Trust Collection Ledger which is carried over from the immediately preceding Trust Calculation Date	0.00 %	0 JPY
The amount in the Cash Collateral Ledger	0.61 %	345,000,000 JPY
Subordinated Principal Balance	10.85 %	6,096,627,150 JPY

### Trust Management Account (TMA)

	in JPY	+/-	in JPY (previous)
<b>Initial Balance on Cash Entrustment Date</b>	<b>345,000,000 JPY</b>		
<b>Outstanding Balance on First Trust Payment Date</b>	<b>345,000,000 JPY</b>	<b>0 JPY</b>	<b>345,000,000 JPY</b>
(a) Expenses Distribution Ledger	0 JPY	0 JPY	0 JPY
(b) Trust Collection Ledger	0 JPY	0 JPY	0 JPY
(c) Cash Collateral Ledger	345,000,000 JPY	0 JPY	345,000,000 JPY
<b>Cash Collateral Ledger Target Balance</b>	<b>345,000,000 JPY</b>		

### Calculation of Credit Enhancement

Driver Japan six's Credit Enhancement consists of the items listed above in the Subordinated Principal Balance as of the relevant date of determination (immediately following the First Trust Payment Date). The result provides an absolute value, which will be applied to the (amortized) Aggregate Discounted Principal Balance as of the end of the relevant date.

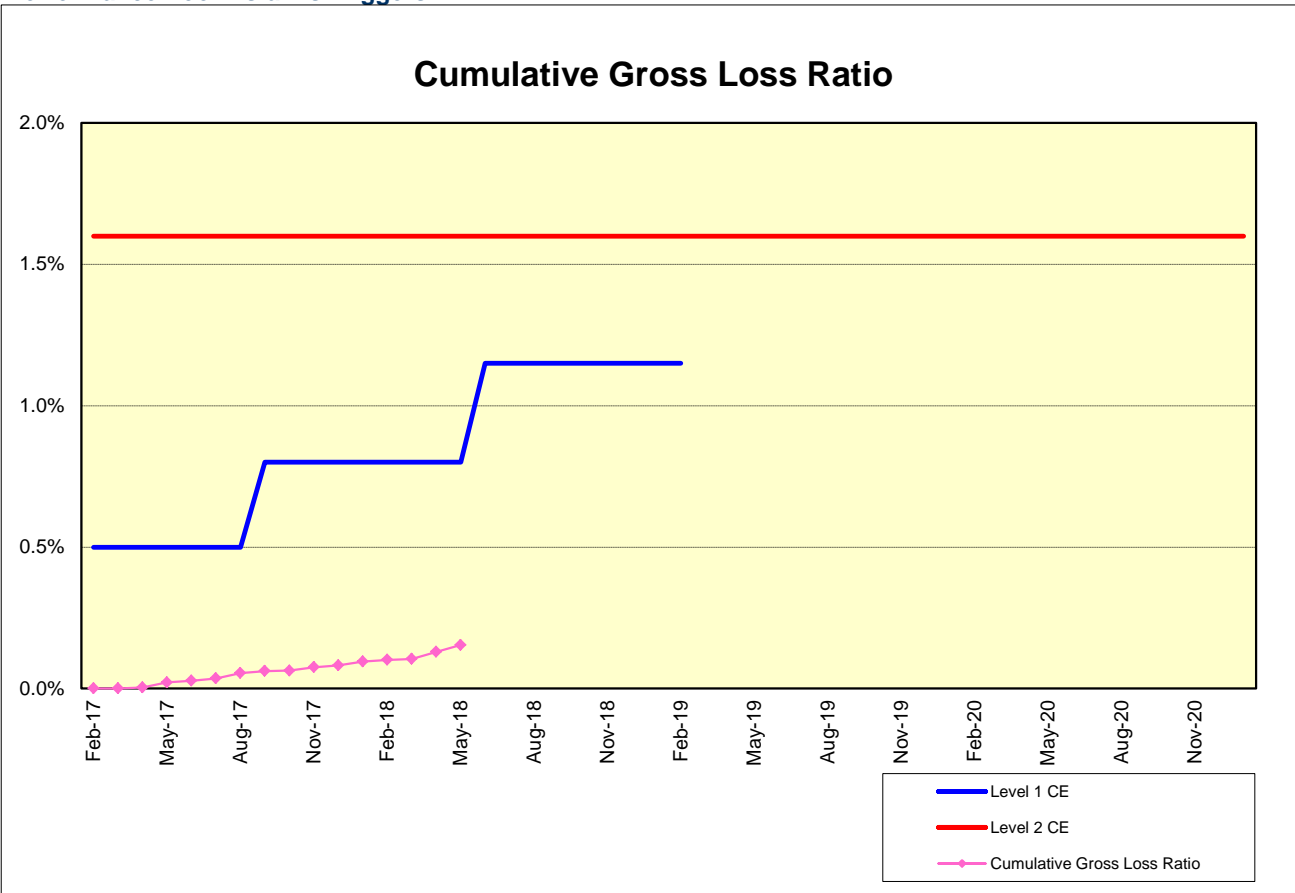
The transaction has a Revolving Period of 12 months until February 2018.

Asset Backed Loan Overcollateralization Percentage is (i) prior to the expiration of the Revolving Period, 8.5%, and (ii) following the expiration of the Revolving Period, 11.5%; provided, in each case no Credit Enhancement Increase Condition shall be in effect. After a Level 1 Credit Enhancement Increase Condition in effect, 17% and after a Level 2 Credit Enhancement Increase Condition is in effect, 100%.



**Cumulative Gross Loss & Cumulative Repurchased Receivables**

**Performance Pool vis-a-vis Triggers**



**Cumulative Repurchased Receivables**

	Number of Contracts	Repurchase Price
Beginning of Period	0	0 JPY
Repurchased Receivables	0	0 JPY
<b>End of Period</b>	<b>0</b>	<b>0 JPY</b>

### Defaulted and Delinquent Contracts

#### Information of Delinquencies and Defaults

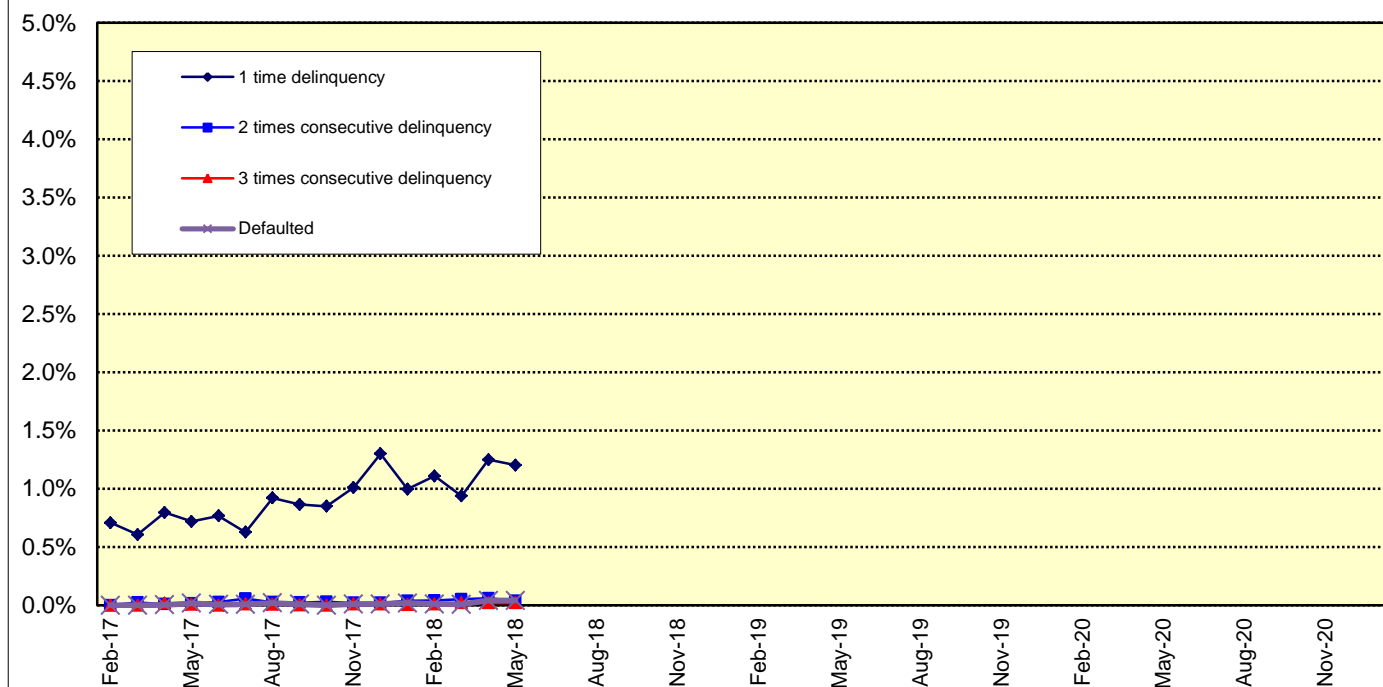
Current Reporting Period	Number of Contracts	Percentage of Contracts (*)	Outstanding Discounted Principal Balance	Percentage of Principal Balance (*)	Outstanding Nominal Balance	Percentage of Nominal Balance (*)
Delinquent	383	1.19 %	708,526,586 JPY	1.21 %	737,698,000 JPY	1.22 %
Default	10	0.03 %	23,601,370 JPY	0.04 %	23,651,811 JPY	0.04 %

(\*) Based on the previous EoP

#### Delinquency Profile (Information Purpose Only)

Days in Arrears	Number of Contracts	Percentage of Contracts	Outstanding Discounted Principal Balance	Percentage of Principal Balance	Outstanding Nominal Balance	Percentage of Nominal Balance
1	368	1.17 %	675,731,210 JPY	1.20 %	703,573,400 JPY	1.21 %
2	10	0.03 %	21,490,193 JPY	0.04 %	22,382,400 JPY	0.04 %
3	5	0.02 %	11,305,183 JPY	0.02 %	11,742,200 JPY	0.02 %
<b>Total</b>	<b>383</b>	<b>1.22 %</b>	<b>708,526,586 JPY</b>	<b>1.26 %</b>	<b>737,698,000 JPY</b>	<b>1.27 %</b>

#### Delinquent / Defaulted (Gross Loss) Ratio



Run Out Schedule

ROS on the previous EoP on 2018/05/10

Next Payment Month	Number of Contracts	ABS Outstanding Principal	ABS Outstanding Interest	Outstanding Installment	ABS Remaining Principal	ABS Remaining Interest	ABS Remaining Installment
04.2018	32,296	58,349,237,723 JPY	2,076,656,977 JPY	60,425,894,700 JPY	0 JPY	0 JPY	0 JPY
05.2018	32,296	56,923,556,316 JPY	1,972,697,784 JPY	58,896,254,100 JPY	1,425,681,407 JPY	103,959,193 JPY	1,529,640,600 JPY
06.2018	31,798	54,784,781,861 JPY	1,871,216,139 JPY	56,655,998,000 JPY	2,138,774,455 JPY	101,481,645 JPY	2,240,256,100 JPY
07.2018	31,095	52,737,104,006 JPY	1,773,476,794 JPY	54,510,580,800 JPY	2,047,677,855 JPY	97,739,345 JPY	2,145,417,200 JPY
08.2018	30,544	51,180,879,093 JPY	1,679,440,507 JPY	52,860,319,600 JPY	1,556,224,913 JPY	94,036,287 JPY	1,650,261,200 JPY
09.2018	30,047	49,515,155,386 JPY	1,588,191,414 JPY	51,103,346,800 JPY	1,665,723,707 JPY	91,249,093 JPY	1,756,972,800 JPY
10.2018	29,261	48,239,789,468 JPY	1,499,847,132 JPY	49,739,636,600 JPY	1,275,365,918 JPY	88,344,282 JPY	1,363,710,200 JPY
11.2018	28,825	46,881,488,797 JPY	1,413,826,203 JPY	48,295,315,000 JPY	1,358,300,671 JPY	86,020,929 JPY	1,444,321,600 JPY
12.2018	28,280	44,245,252,561 JPY	1,330,225,039 JPY	45,575,477,800 JPY	2,636,236,236 JPY	83,601,164 JPY	2,719,837,400 JPY
01.2019	27,444	42,563,719,223 JPY	1,251,356,277 JPY	43,815,075,500 JPY	1,681,533,338 JPY	78,868,762 JPY	1,760,402,100 JPY
02.2019	26,912	40,983,811,356 JPY	1,175,508,844 JPY	42,155,320,200 JPY	1,579,907,867 JPY	75,847,433 JPY	1,655,755,300 JPY
03.2019	26,181	38,866,081,885 JPY	1,102,447,115 JPY	39,968,529,000 JPY	2,117,729,471 JPY	73,061,729 JPY	2,190,791,200 JPY
04.2019	24,983	37,390,910,924 JPY	1,033,034,076 JPY	38,423,945,000 JPY	1,475,170,961 JPY	69,413,039 JPY	1,544,584,000 JPY
05.2019	24,434	35,746,069,878 JPY	966,140,422 JPY	36,712,210,300 JPY	1,644,841,046 JPY	66,893,654 JPY	1,711,734,700 JPY
06.2019	23,692	33,444,363,325 JPY	902,010,975 JPY	34,346,374,300 JPY	2,301,706,553 JPY	64,129,447 JPY	2,365,836,000 JPY
07.2019	22,747	31,447,220,726 JPY	841,729,574 JPY	32,288,950,300 JPY	1,997,142,599 JPY	60,281,401 JPY	2,057,424,000 JPY
08.2019	22,044	29,822,626,906 JPY	784,851,994 JPY	30,607,478,900 JPY	1,624,593,820 JPY	56,877,580 JPY	1,681,471,400 JPY
09.2019	21,317	27,822,638,743 JPY	730,613,257 JPY	28,553,252,000 JPY	1,999,988,163 JPY	54,238,737 JPY	2,054,226,900 JPY
10.2019	20,238	26,350,086,802 JPY	679,445,098 JPY	27,029,531,900 JPY	1,472,551,941 JPY	51,168,159 JPY	1,526,720,100 JPY
11.2019	19,511	24,534,469,073 JPY	630,671,627 JPY	25,165,140,700 JPY	1,815,617,729 JPY	48,773,471 JPY	1,864,391,200 JPY
12.2019	18,553	22,824,804,951 JPY	584,662,149 JPY	23,409,467,100 JPY	1,709,664,122 JPY	46,009,478 JPY	1,755,673,600 JPY
01.2020	18,022	21,694,702,977 JPY	541,692,423 JPY	22,236,395,400 JPY	1,130,101,974 JPY	42,969,726 JPY	1,173,071,700 JPY
02.2020	17,605	20,623,366,559 JPY	500,749,041 JPY	21,124,115,600 JPY	1,071,336,418 JPY	40,943,382 JPY	1,112,279,800 JPY
03.2020	17,016	19,325,928,922 JPY	461,678,878 JPY	19,787,607,800 JPY	1,297,437,637 JPY	39,070,163 JPY	1,336,507,800 JPY
04.2020	16,208	18,528,569,966 JPY	424,747,834 JPY	18,953,317,800 JPY	797,358,956 JPY	36,931,044 JPY	834,290,000 JPY
05.2020	15,917	17,679,033,168 JPY	389,269,732 JPY	18,068,302,900 JPY	849,536,798 JPY	35,478,102 JPY	885,014,900 JPY
06.2020	15,494	16,565,277,611 JPY	355,324,389 JPY	16,920,602,000 JPY	1,113,755,557 JPY	33,945,343 JPY	1,147,700,900 JPY
07.2020	15,041	15,564,168,401 JPY	323,439,499 JPY	15,887,607,900 JPY	1,001,109,210 JPY	31,884,890 JPY	1,032,994,100 JPY
08.2020	14,712	14,735,617,538 JPY	293,484,862 JPY	15,029,102,400 JPY	828,550,863 JPY	29,954,637 JPY	858,505,500 JPY
09.2020	14,296	13,974,354,076 JPY	265,073,524 JPY	14,239,427,600 JPY	761,263,462 JPY	28,411,338 JPY	789,674,800 JPY
10.2020	13,818	13,375,343,776 JPY	238,105,824 JPY	13,613,449,600 JPY	599,010,300 JPY	26,967,700 JPY	625,978,000 JPY
11.2020	13,533	12,777,478,278 JPY	212,332,422 JPY	12,989,810,700 JPY	597,865,498 JPY	25,773,402 JPY	623,638,900 JPY
12.2020	13,204	11,741,704,331 JPY	187,755,169 JPY	11,929,459,500 JPY	1,035,773,947 JPY	24,577,253 JPY	1,060,351,200 JPY
01.2021	12,777	10,931,554,334 JPY	165,253,966 JPY	11,096,808,300 JPY	810,149,997 JPY	22,501,203 JPY	832,651,200 JPY
02.2021	12,253	10,071,599,623 JPY	144,298,577 JPY	10,215,898,200 JPY	859,954,711 JPY	20,955,389 JPY	880,910,100 JPY
03.2021	11,467	9,072,847,832 JPY	124,970,068 JPY	9,197,817,900 JPY	998,751,791 JPY	19,328,509 JPY	1,018,080,300 JPY
04.2021	10,350	8,468,798,290 JPY	107,504,410 JPY	8,576,302,700 JPY	604,049,542 JPY	17,465,658 JPY	621,515,200 JPY
05.2021	9,795	7,794,821,717 JPY	91,246,683 JPY	7,886,068,400 JPY	673,976,573 JPY	16,257,727 JPY	690,234,300 JPY
06.2021	9,046	6,959,012,148 JPY	76,306,752 JPY	7,035,318,900 JPY	835,809,569 JPY	14,939,931 JPY	850,749,500 JPY
07.2021	8,241	6,041,315,701 JPY	63,050,099 JPY	6,104,365,800 JPY	917,696,447 JPY	13,256,653 JPY	930,953,100 JPY
08.2021	7,422	5,228,729,622 JPY	51,563,278 JPY	5,280,292,900 JPY	812,586,079 JPY	11,486,821 JPY	824,072,900 JPY
09.2021	6,486	4,200,285,687 JPY	41,567,013 JPY	4,241,852,700 JPY	1,028,443,935 JPY	9,996,265 JPY	1,038,440,200 JPY
10.2021	5,243	3,531,345,330 JPY	33,502,670 JPY	3,564,848,000 JPY	668,940,357 JPY	8,064,343 JPY	677,004,700 JPY
11.2021	4,462	2,700,289,882 JPY	26,681,318 JPY	2,726,971,200 JPY	831,055,448 JPY	6,821,352 JPY	837,876,800 JPY
12.2021	3,429	2,242,973,557 JPY	21,366,043 JPY	2,264,339,600 JPY	457,316,325 JPY	5,315,275 JPY	462,631,600 JPY
01.2022	3,065	1,913,739,392 JPY	16,937,708 JPY	1,930,677,100 JPY	329,234,165 JPY	4,428,335 JPY	333,662,500 JPY
02.2022	2,747	1,581,542,595 JPY	13,156,205 JPY	1,594,698,800 JPY	332,196,797 JPY	3,781,503 JPY	335,978,300 JPY
03.2022	2,371	1,142,345,209 JPY	10,018,691 JPY	1,152,363,900 JPY	439,197,386 JPY	3,137,514 JPY	442,334,900 JPY
04.2022	1,779	944,195,586 JPY	7,675,814 JPY	951,871,400 JPY	198,149,623 JPY	2,342,877 JPY	200,492,500 JPY
05.2022	1,519	739,594,875 JPY	5,717,025 JPY	745,311,900 JPY	204,600,711 JPY	1,958,789 JPY	206,559,500 JPY
06.2022	1,225	519,220,163 JPY	4,139,137 JPY	523,359,300 JPY	220,374,712 JPY	1,577,888 JPY	221,952,600 JPY
07.2022	922	373,362,089 JPY	2,986,011 JPY	376,348,100 JPY	145,858,074 JPY	1,153,126 JPY	147,011,200 JPY
08.2022	736	271,649,655 JPY	2,136,845 JPY	273,786,500 JPY	101,712,434 JPY	849,166 JPY	102,561,600 JPY
09.2022	537	156,801,191 JPY	1,497,909 JPY	158,299,100 JPY	114,848,464 JPY	638,936 JPY	115,487,400 JPY
10.2022	346	88,337,679 JPY	1,100,321 JPY	89,438,000 JPY	68,463,512 JPY	397,588 JPY	68,861,100 JPY
11.2022	243	55,485,784 JPY	861,616 JPY	56,347,400 JPY	32,851,895 JPY	238,705 JPY	33,090,600 JPY
12.2022	181	42,929,805 JPY	696,595 JPY	43,626,400 JPY	12,555,979 JPY	165,021 JPY	12,721,000 JPY
01.2023	155	34,771,881 JPY	568,219 JPY	35,340,100 JPY	8,157,924 JPY	128,376 JPY	8,286,300 JPY
02.2023	140	29,245,429 JPY	463,571 JPY	29,709,000 JPY	5,526,452 JPY	104,648 JPY	5,631,100 JPY
03.2023	120	24,503,162 JPY	375,038 JPY	24,878,200 JPY	4,742,267 JPY	88,533 JPY	4,830,800 JPY
04.2023	98	20,525,708 JPY	300,392 JPY	20,826,100 JPY	3,977,454 JPY	74,646 JPY	4,052,100 JPY
05.2023	88	16,900,082 JPY	237,618 JPY	17,137,700 JPY	3,625,626 JPY	62,774 JPY	3,688,400 JPY
06.2023	69	13,360,920 JPY	185,680 JPY	13,546,600 JPY	3,539,162 JPY	51,938 JPY	3,591,100 JPY
07.2023	53	9,888,032 JPY	144,068 JPY	10,032,100 JPY	3,472,888 JPY	41,612 JPY	3,514,500 JPY
08.2023	47	7,476,993 JPY	113,107 JPY	7,590,100 JPY	2,411,039 JPY	30,961 JPY	2,442,000 JPY
09.2023	39	5,850,380 JPY	89,620 JPY	5,940,000 JPY	1,626,613 JPY	23,487 JPY	1,650,100 JPY
10.2023	25	4,795,064 JPY	71,136 JPY	4,866,200 JPY	1,055,316 JPY	18,484 JPY	1,073,800 JPY
11.2023	15	4,166,883 JPY	55,917 JPY	4,222,800 JPY	628,181 JPY	15,219 JPY	643,400 JPY
12.2023	12	2,868,255 JPY	42,645 JPY	2,910,900 JPY	1,298,628 JPY	13,272 JPY	1,311,900 JPY
01.2024	10	2,314,191 JPY	33,509 JPY	2,347,700 JPY	554,064 JPY	9,136 JPY	563,200 JPY
02.2024	9	1,952,261 JPY	26,139 JPY	1,978,400 JPY	361,930 JPY	7,370 JPY	369,300 JPY
03.2024	7	1,670,980 JPY	19,920 JPY	1,690,900 JPY	281,281 JPY	6,219 JPY	287,500 JPY
04.2024	6	1,442,602 JPY	14,598 JPY	1,457,200 JPY	228,378 JPY	5,322 JPY	233,700 JPY
05.2024	5	1,264,097 JPY	10,003 JPY	1,274,100 JPY	178,505 JPY	4,595 JPY	183,100 JPY
06.2024	5	1,085,024 JPY	5,976 JPY	1,091,000 JPY	179,073 JPY	4,027 JPY	183,100 JPY
07.2024	5	415,380 JPY	2,520 JPY	417,900 JPY	669,644 JPY	3,456 JPY	673,100 JPY
08.2024	4	263,803 JPY	1,197 JPY	265,000 JPY	151,577 JPY	1,323 JPY	152,900 JPY
09.2024	4	111,744 JPY	356 JPY	112,100 JPY	152,059 JPY	841 JPY	152,900 JPY
10.2024	3	0 JPY	0 JPY	0 JPY	111,744 JPY	356 JPY	112,100 JPY

Run Out Schedule

ROS on the relevant EoP on 2018/06/10

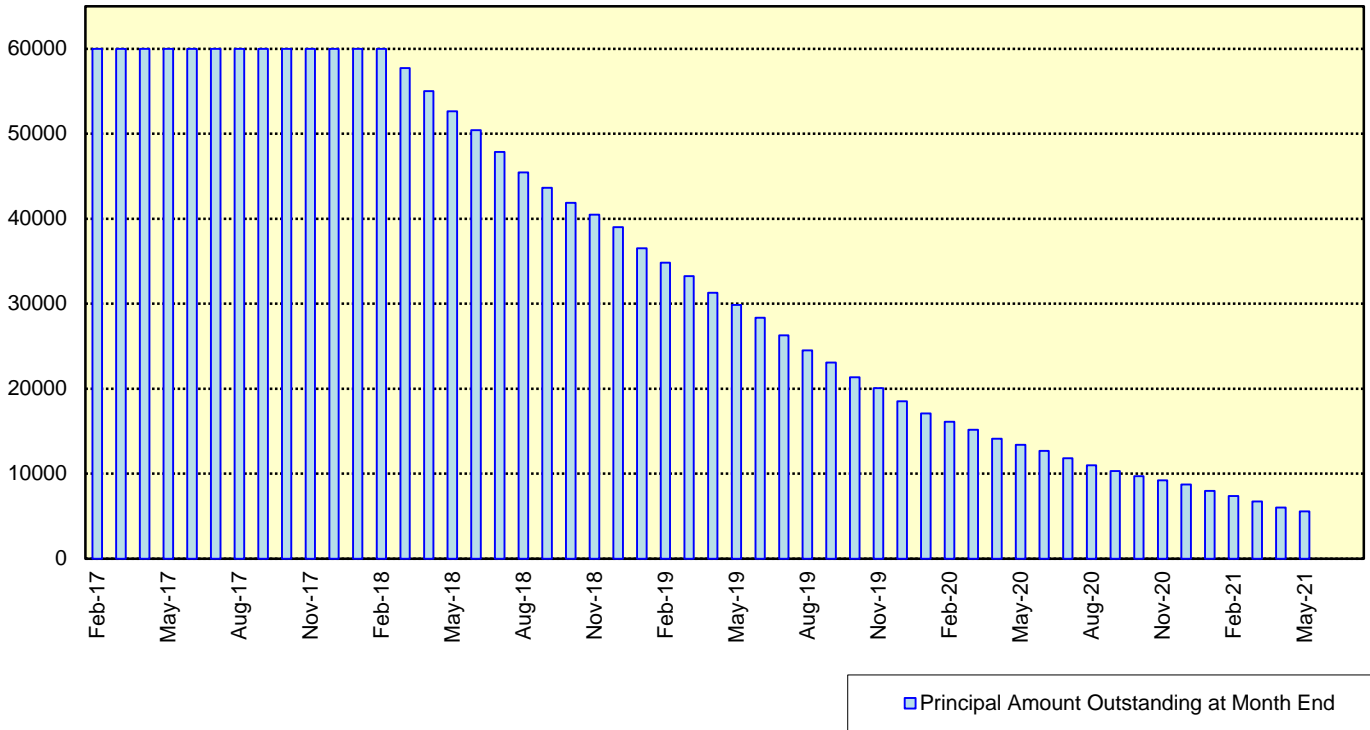
Next Payment Month	Number of Contracts	ABS Outstanding Principal	ABS Outstanding Interest	Outstanding Installment	ABS Remaining Principal	ABS Remaining Interest	ABS Remaining Installment
05.2018	31,379	56,165,314,785 JPY	1,951,702,415 JPY	58,117,017,200 JPY	0 JPY	0 JPY	0 JPY
06.2018	31,379	54,079,819,668 JPY	1,851,608,032 JPY	55,931,427,700 JPY	2,085,495,117 JPY	100,094,383 JPY	2,185,589,500 JPY
07.2018	30,705	52,069,979,393 JPY	1,755,166,407 JPY	53,825,145,800 JPY	2,009,840,275 JPY	96,441,625 JPY	2,106,281,900 JPY
08.2018	30,169	50,549,985,499 JPY	1,662,359,701 JPY	52,212,345,200 JPY	1,519,993,894 JPY	92,806,706 JPY	1,612,800,600 JPY
09.2018	29,692	48,928,144,866 JPY	1,572,281,934 JPY	50,500,426,800 JPY	1,621,840,633 JPY	90,077,767 JPY	1,711,918,400 JPY
10.2018	28,926	47,676,759,444 JPY	1,485,033,756 JPY	49,161,793,200 JPY	1,251,385,422 JPY	87,248,178 JPY	1,338,633,600 JPY
11.2018	28,502	46,341,691,667 JPY	1,400,061,333 JPY	47,741,753,000 JPY	1,335,067,777 JPY	84,972,423 JPY	1,420,040,200 JPY
12.2018	27,966	43,742,719,305 JPY	1,317,463,795 JPY	45,060,183,100 JPY	2,598,972,362 JPY	82,597,538 JPY	2,681,569,900 JPY
01.2019	27,142	42,077,298,426 JPY	1,239,532,474 JPY	43,316,830,900 JPY	1,665,420,879 JPY	77,931,321 JPY	1,743,352,200 JPY
02.2019	26,614	40,515,102,593 JPY	1,164,589,607 JPY	41,679,692,200 JPY	1,562,195,833 JPY	74,942,867 JPY	1,637,138,700 JPY
03.2019	25,891	38,450,389,715 JPY	1,092,398,585 JPY	39,542,788,300 JPY	2,064,712,878 JPY	72,191,022 JPY	2,136,903,900 JPY
04.2019	24,718	37,008,335,448 JPY	1,023,768,852 JPY	38,032,104,300 JPY	1,442,054,267 JPY	68,629,733 JPY	1,510,684,000 JPY
05.2019	24,184	35,399,229,128 JPY	957,600,172 JPY	36,356,829,300 JPY	1,609,106,320 JPY	66,168,680 JPY	1,675,275,000 JPY
06.2019	23,459	33,124,915,424 JPY	894,135,376 JPY	34,019,050,800 JPY	2,274,313,704 JPY	63,464,796 JPY	2,337,778,500 JPY
07.2019	22,530	31,152,785,796 JPY	834,462,804 JPY	31,987,248,600 JPY	1,972,129,628 JPY	59,672,572 JPY	2,031,802,200 JPY
08.2019	21,839	29,549,523,422 JPY	778,149,278 JPY	30,327,670,300 JPY	1,603,262,374 JPY	56,313,526 JPY	1,659,575,900 JPY
09.2019	21,122	27,569,890,663 JPY	724,442,837 JPY	28,294,333,500 JPY	1,979,632,759 JPY	53,706,441 JPY	2,033,339,200 JPY
10.2019	20,054	26,113,469,589 JPY	673,775,211 JPY	26,787,244,800 JPY	1,456,421,074 JPY	50,667,626 JPY	1,507,088,700 JPY
11.2019	19,334	24,322,856,903 JPY	625,470,797 JPY	24,948,327,700 JPY	1,790,612,686 JPY	48,304,414 JPY	1,838,917,100 JPY
12.2019	18,390	22,630,029,661 JPY	579,892,439 JPY	23,209,922,100 JPY	1,692,827,242 JPY	45,578,358 JPY	1,738,405,600 JPY
01.2020	17,865	21,506,517,510 JPY	537,316,890 JPY	22,043,834,400 JPY	1,123,512,151 JPY	42,575,549 JPY	1,166,087,700 JPY
02.2020	17,449	20,442,964,231 JPY	496,754,169 JPY	20,939,718,400 JPY	1,063,553,279 JPY	40,562,721 JPY	1,104,116,000 JPY
03.2020	16,862	19,160,015,989 JPY	458,048,311 JPY	19,618,064,300 JPY	1,282,948,242 JPY	38,705,858 JPY	1,321,654,100 JPY
04.2020	16,063	18,369,563,599 JPY	421,456,101 JPY	18,791,019,700 JPY	790,452,390 JPY	36,592,210 JPY	1,267,044,600 JPY
05.2020	15,776	17,531,406,507 JPY	386,302,893 JPY	17,917,709,400 JPY	838,157,092 JPY	35,153,208 JPY	1,173,310,300 JPY
06.2020	15,364	16,429,556,367 JPY	352,659,533 JPY	16,782,215,900 JPY	1,101,850,140 JPY	33,643,360 JPY	1,135,493,500 JPY
07.2020	14,916	15,436,333,709 JPY	321,050,591 JPY	15,757,384,300 JPY	993,222,658 JPY	31,608,942 JPY	1,024,831,600 JPY
08.2020	14,591	14,618,170,790 JPY	291,355,710 JPY	14,909,526,500 JPY	818,162,919 JPY	29,694,881 JPY	847,857,800 JPY
09.2020	14,182	13,863,472,541 JPY	263,182,459 JPY	14,126,655,000 JPY	754,698,249 JPY	28,173,251 JPY	782,871,500 JPY
10.2020	13,706	13,270,902,081 JPY	236,439,019 JPY	13,507,341,100 JPY	592,570,460 JPY	26,743,440 JPY	619,313,900 JPY
11.2020	13,425	12,680,659,008 JPY	210,877,092 JPY	12,891,536,100 JPY	590,243,073 JPY	25,561,927 JPY	615,805,000 JPY
12.2020	13,102	11,659,266,337 JPY	186,495,063 JPY	11,845,761,400 JPY	1,021,392,671 JPY	24,382,029 JPY	1,045,774,700 JPY
01.2021	12,685	10,856,637,941 JPY	164,157,759 JPY	11,020,795,700 JPY	802,628,396 JPY	22,337,304 JPY	824,965,700 JPY
02.2021	12,165	10,004,382,138 JPY	143,350,962 JPY	10,147,733,100 JPY	852,255,803 JPY	20,806,797 JPY	873,062,600 JPY
03.2021	11,383	9,013,016,709 JPY	124,156,191 JPY	9,137,172,900 JPY	991,365,429 JPY	19,194,771 JPY	1,010,560,200 JPY
04.2021	10,275	8,415,400,428 JPY	106,809,372 JPY	8,522,209,800 JPY	597,616,281 JPY	17,346,819 JPY	614,963,100 JPY
05.2021	9,724	7,746,311,805 JPY	90,655,195 JPY	7,836,967,000 JPY	669,088,623 JPY	16,154,177 JPY	685,242,800 JPY
06.2021	8,982	6,915,720,767 JPY	75,810,533 JPY	6,991,531,300 JPY	830,591,038 JPY	14,844,662 JPY	845,435,700 JPY
07.2021	8,180	6,003,365,065 JPY	62,639,235 JPY	6,066,004,300 JPY	912,355,702 JPY	13,171,298 JPY	925,527,000 JPY
08.2021	7,368	5,196,877,574 JPY	51,227,426 JPY	5,248,105,000 JPY	806,487,491 JPY	11,411,809 JPY	817,899,300 JPY
09.2021	6,438	4,173,205,982 JPY	41,295,218 JPY	4,214,501,200 JPY	1,023,671,592 JPY	9,932,208 JPY	1,033,603,800 JPY
10.2021	5,202	3,510,393,974 JPY	33,286,526 JPY	3,543,680,500 JPY	662,812,008 JPY	8,008,692 JPY	670,820,300 JPY
11.2021	4,430	2,684,862,155 JPY	26,510,045 JPY	2,711,372,200 JPY	825,531,819 JPY	6,776,481 JPY	832,308,300 JPY
12.2021	3,406	2,231,052,170 JPY	21,229,130 JPY	2,252,281,300 JPY	453,809,985 JPY	5,280,915 JPY	495,090,900 JPY
01.2022	3,045	1,902,761,586 JPY	16,826,914 JPY	1,919,588,500 JPY	328,290,584 JPY	4,402,216 JPY	332,692,800 JPY
02.2022	2,729	1,572,862,767 JPY	13,069,433 JPY	1,585,932,200 JPY	329,898,819 JPY	3,757,481 JPY	333,656,300 JPY
03.2022	2,355	1,135,801,244 JPY	9,950,756 JPY	1,145,752,000 JPY	437,061,523 JPY	3,118,677 JPY	440,180,200 JPY
04.2022	1,766	938,123,623 JPY	7,623,277 JPY	945,746,900 JPY	197,677,621 JPY	2,327,479 JPY	200,005,100 JPY
05.2022	1,506	733,996,049 JPY	5,678,751 JPY	739,674,800 JPY	204,127,574 JPY	1,944,526 JPY	206,072,100 JPY
06.2022	1,212	516,907,712 JPY	4,113,988 JPY	521,021,700 JPY	217,088,337 JPY	1,564,763 JPY	218,653,100 JPY
07.2022	913	371,402,860 JPY	2,967,140 JPY	374,370,000 JPY	145,504,852 JPY	1,146,848 JPY	146,651,700 JPY
08.2022	727	270,442,411 JPY	2,123,289 JPY	272,565,700 JPY	100,960,449 JPY	843,851 JPY	101,804,300 JPY
09.2022	529	155,877,683 JPY	1,487,917 JPY	157,365,600 JPY	114,564,728 JPY	635,372 JPY	115,200,100 JPY
10.2022	340	87,636,194 JPY	1,093,106 JPY	88,729,300 JPY	68,241,489 JPY	394,811 JPY	68,636,300 JPY
11.2022	239	54,938,758 JPY	856,542 JPY	55,795,300 JPY	32,697,436 JPY	236,564 JPY	32,934,000 JPY
12.2022	178	42,611,100 JPY	693,200 JPY	43,304,300 JPY	12,327,658 JPY	163,342 JPY	12,491,000 JPY
01.2023	152	34,582,182 JPY	565,818 JPY	35,148,000 JPY	8,028,918 JPY	127,382 JPY	8,156,300 JPY
02.2023	138	29,096,636 JPY	461,764 JPY	29,558,400 JPY	5,485,546 JPY	104,054 JPY	5,589,600 JPY
03.2023	119	24,373,995 JPY	373,705 JPY	24,747,700 JPY	4,722,641 JPY	88,059 JPY	4,810,700 JPY
04.2023	97	20,416,230 JPY	299,470 JPY	20,715,700 JPY	3,957,765 JPY	74,235 JPY	4,032,000 JPY
05.2023	87	16,810,355 JPY	237,045 JPY	17,047,400 JPY	3,605,875 JPY	62,425 JPY	3,668,300 JPY
06.2023	68	13,291,007 JPY	185,393 JPY	13,476,400 JPY	3,519,348 JPY	51,652 JPY	3,571,000 JPY
07.2023	52	9,867,996 JPY	144,004 JPY	10,012,000 JPY	3,423,011 JPY	41,389 JPY	3,464,400 JPY
08.2023	46	7,476,993 JPY	113,107 JPY	7,590,100 JPY	2,391,003 JPY	30,897 JPY	2,421,900 JPY
09.2023	39	5,850,380 JPY	89,620 JPY	5,940,000 JPY	1,626,613 JPY	23,487 JPY	1,650,100 JPY
10.2023	25	4,795,064 JPY	71,136 JPY	4,866,200 JPY	1,055,316 JPY	18,484 JPY	1,073,800 JPY
11.2023	15	4,166,883 JPY	55,917 JPY	4,222,800 JPY	628,181 JPY	15,219 JPY	643,400 JPY
12.2023	12	2,868,255 JPY	42,645 JPY	2,910,900 JPY	1,298,628 JPY	13,272 JPY	1,311,900 JPY
01.2024	10	2,314,191 JPY	33,509 JPY	2,347,700 JPY	554,064 JPY	9,136 JPY	563,200 JPY
02.2024	9	1,952,261 JPY	26,139 JPY	1,978,400 JPY	361,930 JPY	7,370 JPY	369,300 JPY
03.2024	7	1,670,980 JPY	19,920 JPY	1,690,900 JPY	281,281 JPY	6,219 JPY	287,500 JPY
04.2024	6	1,442,602 JPY	14,598 JPY	1,457,200 JPY	228,378 JPY	5,322 JPY	233,700 JPY
05.2024	5	1,264,097 JPY	10,003 JPY	1,274,100 JPY	178,505 JPY	4,595 JPY	183,100 JPY
06.2024	5	1,085,024 JPY	5,976 JPY	1,091,000 JPY	179,073 JPY	4,027 JPY	183,100 JPY
07.2024	5	415,380 JPY	2,520 JPY	417,900 JPY	669,644 JPY	3,456 JPY	673,100 JPY
08.2024	4	263,803 JPY	1,197 JPY	265,000 JPY	151,577 JPY	1,323 JPY	152,900 JPY
09.2024	4	111,744 JPY	356 JPY	112,100 JPY	152,059 JPY	841 JPY	152,900 JPY
10.2024	3	0 JPY	0 JPY	0 JPY	111,744 JPY	356 JPY	112,100 JPY

**Expected Amortisation**

**Expected Amortization to the Second Trust**

JPY mil.

Assuming a Clean-Up Call at 10% of the Initial Outstanding Balance, annual prepayments of 10% and 0% defaults.





**Distribution by Sub-Servicer**

Sub-Servicer	Number of Loans	Percentage of Loans	Outstanding Principal Balance	Percentage of Balance
Cedyna	18,486	58.91 %	33,778,594,854 JPY	60.14 %
Jaccs	12,893	41.09 %	22,386,719,931 JPY	39.86 %
<b>Total</b>	<b>31,379</b>	<b>100.00 %</b>	<b>56,165,314,785 JPY</b>	<b>100.00 %</b>

**Distribution by Brand**

Make	Number of Loans	Percentage of Loans	Outstanding Discounted Principal Balance	Percentage of Balance
VW	20,111	64.09 %	30,208,988,485 JPY	53.79 %
Audi	11,238	35.81 %	25,860,379,963 JPY	46.04 %
Bentley	14	0.04 %	67,682,089 JPY	0.12 %
Lamborghini	4	0.01 %	18,277,408 JPY	0.03 %
Other	12	0.04 %	9,986,840 JPY	0.02 %
<b>Total</b>	<b>31,379</b>	<b>100.00 %</b>	<b>56,165,314,785 JPY</b>	<b>100.00 %</b>

**Distribution by New and Used**
**Distribution by New and Used**

New or Used	Number of Loans	Percentage of Loans	Outstanding Discounted Principal Balance	Percentage of Balance
New	20,918	66.66 %	43,544,438,973 JPY	77.53 %
Used	8,435	26.88 %	11,711,381,707 JPY	20.85 %
Used (Prolonged)	2,026	6.46 %	909,494,105 JPY	1.62 %
<b>Total</b>	<b>31,379</b>	<b>100.00 %</b>	<b>56,165,314,785 JPY</b>	<b>100.00 %</b>

**Distribution by Brand New and Used**

New or Used	Number of Loans	Percentage of Loans	Outstanding Discounted Principal Balance	Percentage of Balance
VW New	14,050	44.78 %	24,866,642,448 JPY	44.27 %
VW Used	4,576	14.58 %	4,888,939,141 JPY	8.70 %
VW Used (Prolonged)	1,485	4.73 %	453,406,896 JPY	0.81 %
Audi New	6,857	21.85 %	18,630,623,896 JPY	33.17 %
Audi Used	3,840	12.24 %	6,773,668,858 JPY	12.06 %
Audi Used (Prolonged)	541	1.72 %	456,087,209 JPY	0.81 %
Other	30	0.10 %	95,946,337 JPY	0.17 %
<b>Total</b>	<b>31,379</b>	<b>100.00 %</b>	<b>56,165,314,785 JPY</b>	<b>100.00 %</b>

## Distribution by Product Type

### Loan Type List

Loan Type	Description
100	Volkswagen Owner's Plan
100	Audi Owner's Plan
100	Lamborghini Auto Loan
100	Bentley Auto Loan
101	Twin Loan
105	Refinanced Volkswagen Solutions
106	Refinanced Volkswagen Das Welt Auto with refinance option *
106	Refinanced Audi S-Loan/ S-Loan Plus
106	Refinanced Lamborghini Hyper Premium Plan
106	Refinanced Bentley My Flying B
140	Volkswagen Solutions
150	Volkswagen Das Welt Auto with refinance option **
150	Audi S-Loan
150	Lamborghini Hyper Premium Plan
150	Bentley My Flying B
151	Audi S-Loan Plus

(\*) The name was changed from "Refinanced Volkswagen GUC with refinance option" effective from 1 February 2012.

No other changes were made to auto loan agreements.

(\*\*) The name was changed from "Volkswagen GUC with refinance option" effective from 1 February 2012.

No other changes were made to auto loan agreements.

### Product Type

Loan Type	Number of Loans	Percentage of Loans	Outstanding Discounted Principal Balance	Percentage of Balance
100	4,435	14.13 %	5,225,862,081 JPY	9.30 %
101	0	0.00 %	0 JPY	0.00 %
105	1,436	4.58 %	445,468,680 JPY	0.79 %
106	590	1.88 %	464,025,425 JPY	0.83 %
140-VFJ	2,041	6.50 %	3,582,573,581 JPY	6.38 %
140-Dealer	10,954	34.91 %	20,005,394,411 JPY	35.62 %
150	11,327	36.10 %	24,827,058,368 JPY	44.20 %
151	596	1.90 %	1,614,932,239 JPY	2.88 %
<b>Total</b>	<b>31,379</b>	<b>100.00 %</b>	<b>56,165,314,785 JPY</b>	<b>100.00 %</b>

### Credit Type

Credit Type	Number of Loans	Percentage of Loans	Outstanding Discounted Principal Balance	Percentage of Balance
Balloon Type Loan	24,918	79.41 %	50,029,958,599 JPY	89.08 %
Equal Instalment Type Loan	6,461	20.59 %	6,135,356,186 JPY	10.92 %
<b>Total</b>	<b>31,379</b>	<b>100.00 %</b>	<b>56,165,314,785 JPY</b>	<b>100.00 %</b>

**Distribution by RV**

Loan Type	Number of Loans	Percentage of Balance	Outstanding Discounted Principal Balance
100/101/105/106	6,461	10.92 %	6,135,356,186 JPY
140-VFJ (excl. balloon)		3.39 %	1,906,678,246 JPY
140-VFJ (balloon)		2.98 %	1,675,895,335 JPY
140-VFJ	2,041	6.38 %	3,582,573,581 JPY
140-Dealer (excl. balloon)		18.93 %	10,633,307,858 JPY
140-Dealer (balloon)		16.69 %	9,372,086,553 JPY
140-Dealer	10,954	35.62 %	20,005,394,411 JPY
150 (excl. balloon)		19.94 %	11,198,236,967 JPY
150 (balloon)		24.27 %	13,628,821,401 JPY
150	11,327	44.20 %	24,827,058,368 JPY
151 (excl. balloon)		0.80 %	451,636,525 JPY
151 (balloon)		2.07 %	1,163,295,714 JPY
151	596	2.88 %	1,614,932,239 JPY
<b>Total</b>	<b>31,379</b>	<b>100.00 %</b>	<b>56,165,314,785 JPY</b>

Type of Payment Portion	Percentage of Balance	Outstanding Discounted Principal Balance
Monthly Installment Portion	53.99 %	30,325,215,782 JPY
Balloon Portion	46.01 %	25,840,099,003 JPY
<b>Total</b>	<b>100.00 %</b>	<b>56,165,314,785 JPY</b>

**Distribution by Brand New and Used**
**Audi**

New or Used	Number of Loans	Percentage of Loans	Outstanding Discounted Principal Balance	Percentage of Balance
New	6,857	61.02 %	18,630,623,896 JPY	72.04 %
Used	4,381	38.98 %	7,229,756,067 JPY	27.96 %
<b>Total</b>	<b>11,238</b>	<b>100.00 %</b>	<b>25,860,379,963 JPY</b>	<b>100.00 %</b>

**Bentley**

New or Used	Number of Loans	Percentage of Loans	Outstanding Discounted Principal Balance	Percentage of Balance
New	9	64.29 %	39,122,671 JPY	57.80 %
Used	5	35.71 %	28,559,418 JPY	42.20 %
<b>Total</b>	<b>14</b>	<b>100.00 %</b>	<b>67,682,089 JPY</b>	<b>100.00 %</b>

**Lamborghini**

New or Used	Number of Loans	Percentage of Loans	Outstanding Discounted Principal Balance	Percentage of Balance
New	2	50.00 %	8,049,958 JPY	44.04 %
Used	2	50.00 %	10,227,450 JPY	55.96 %
<b>Total</b>	<b>4</b>	<b>100.00 %</b>	<b>18,277,408 JPY</b>	<b>100.00 %</b>

**VW**

New or Used	Number of Loans	Percentage of Loans	Outstanding Discounted Principal Balance	Percentage of Balance
New	14,050	69.86 %	24,866,642,448 JPY	82.32 %
Used	6,061	30.14 %	5,342,346,037 JPY	17.68 %
<b>Total</b>	<b>20,111</b>	<b>100.00 %</b>	<b>30,208,988,485 JPY</b>	<b>100.00 %</b>

**OTHER**

New or Used	Number of Loans	Percentage of Loans	Outstanding Discounted Principal Balance	Percentage of Balance
New	0	0.00 %	0 JPY	0.00 %
Used	12	100.00 %	9,986,840 JPY	100.00 %
<b>Total</b>	<b>12</b>	<b>100.00 %</b>	<b>9,986,840 JPY</b>	<b>100.00 %</b>

### Distribution by Customer Type

#### Customer Type

Customer Type	Number of Loans	Percentage of Loans	Outstanding Discounted Principal Balance	Percentage of Balance
Retail	28,382	90.45 %	48,468,607,167 JPY	86.30 %
Corporate	2,997	9.55 %	7,696,707,618 JPY	13.70 %
<b>Total</b>	<b>31,379</b>	<b>100.00 %</b>	<b>56,165,314,785 JPY</b>	<b>100.00 %</b>

**Distribution by Outstanding Discounted Principal Balance**

Outstanding Discounted Principal Balance	Number of Loans	Percentage of Loans	Outstanding Discounted Principal Balance	Percentage of Balance
<= 500,000 JPY	3,088	9.84 %	815,301,270 JPY	1.45 %
500,001 JPY - 1,000,000 JPY	4,629	14.75 %	3,557,068,881 JPY	6.33 %
1,000,001 JPY - 1,500,000 JPY	6,393	20.37 %	8,050,546,265 JPY	14.33 %
1,500,001 JPY - 2,000,000 JPY	6,129	19.53 %	10,678,268,567 JPY	19.01 %
2,000,001 JPY - 2,500,000 JPY	4,684	14.93 %	10,460,789,232 JPY	18.62 %
2,500,001 JPY - 3,000,000 JPY	2,637	8.40 %	7,177,147,154 JPY	12.78 %
3,000,001 JPY - 3,500,000 JPY	1,424	4.54 %	4,596,974,985 JPY	8.18 %
3,500,001 JPY - 4,000,000 JPY	904	2.88 %	3,380,352,324 JPY	6.02 %
4,000,001 JPY - 4,500,000 JPY	590	1.88 %	2,495,243,943 JPY	4.44 %
4,500,001 JPY - 5,000,000 JPY	341	1.09 %	1,609,096,747 JPY	2.86 %
5,000,001 JPY - 6,000,000 JPY	347	1.11 %	1,874,192,288 JPY	3.34 %
6,000,001 JPY - 7,000,000 JPY	136	0.43 %	874,346,697 JPY	1.56 %
7,000,001 JPY - 8,000,000 JPY	57	0.18 %	425,366,827 JPY	0.76 %
8,000,001 JPY - 9,000,000 JPY	16	0.05 %	133,298,313 JPY	0.24 %
9,000,001 JPY - 10,000,000 JPY	4	0.01 %	37,321,292 JPY	0.07 %
>= 10,000,001 JPY	0	0.00 %	0 JPY	0.00 %
<b>Total</b>	<b>31,379</b>	<b>100.00 %</b>	<b>56,165,314,785 JPY</b>	<b>100.00 %</b>

**Statistics**

<b>Minimum</b> Outstanding Discounted Principal Balance	7,577 JPY
<b>Maximum</b> Outstanding Discounted Principal Balance	9,442,306 JPY
<b>Average</b> Outstanding Discounted Principal Balance	1,789,901 JPY



**Distribution by Original Principal Amount**

Original Principal Balance	Number of Loans	Percentage of Loans	Outstanding Discounted Principal Balance	Percentage of Balance
<= 500,000 JPY	346	1.10 %	50,272,151 JPY	0.09 %
500,001 JPY - 1,000,000 JPY	2,219	7.07 %	854,561,321 JPY	1.52 %
1,000,001 JPY - 1,500,000 JPY	3,384	10.78 %	2,618,445,027 JPY	4.66 %
1,500,001 JPY - 2,000,000 JPY	5,035	16.05 %	5,797,565,371 JPY	10.32 %
2,000,001 JPY - 2,500,000 JPY	5,220	16.64 %	7,820,491,649 JPY	13.92 %
2,500,001 JPY - 3,000,000 JPY	5,023	16.01 %	9,267,864,407 JPY	16.50 %
3,000,001 JPY - 3,500,000 JPY	3,527	11.24 %	7,753,558,626 JPY	13.80 %
3,500,001 JPY - 4,000,000 JPY	2,291	7.30 %	5,846,910,585 JPY	10.41 %
4,000,001 JPY - 4,500,000 JPY	1,285	4.10 %	3,754,694,825 JPY	6.69 %
4,500,001 JPY - 5,000,000 JPY	956	3.05 %	3,143,183,529 JPY	5.60 %
5,000,001 JPY - 6,000,000 JPY	985	3.14 %	3,725,203,616 JPY	6.63 %
6,000,001 JPY - 7,000,000 JPY	555	1.77 %	2,452,384,851 JPY	4.37 %
7,000,001 JPY - 8,000,000 JPY	242	0.77 %	1,218,033,307 JPY	2.17 %
8,000,001 JPY - 9,000,000 JPY	135	0.43 %	765,200,074 JPY	1.36 %
9,000,001 JPY - 10,000,000 JPY	75	0.24 %	489,535,944 JPY	0.87 %
>= 10,000,001 JPY	101	0.32 %	607,409,502 JPY	1.08 %
<b>Total</b>	<b>31,379</b>	<b>100.00 %</b>	<b>56,165,314,785 JPY</b>	<b>100.00 %</b>

**Statistics**

<b>Minimum</b> Original Principal Balance	90,000 JPY
<b>Maximum</b> Original Principal Balance	25,000,000 JPY
<b>Average</b> Original Principal Balance	2,719,070 JPY

**Distribution by Interest Rate paid by the Obligor**

Interest Rate paid by the Obligor	Number of Loans	Percentage of Loans	Outstanding Discounted Principal Balance	Percentage of Balance
< 0.900 %	1,190	3.79 %	2,291,795,808 JPY	4.08 %
0.900 % < 1.500 %	5,622	17.92 %	12,625,183,478 JPY	22.48 %
1.500 % < 2.000 %	11,251	35.86 %	22,077,398,745 JPY	39.31 %
2.000 % < 2.500 %	273	0.87 %	491,848,765 JPY	0.88 %
2.500 % < 3.000 %	6,971	22.22 %	11,950,554,159 JPY	21.28 %
3.000 % < 3.500 %	1,165	3.71 %	895,671,193 JPY	1.59 %
3.500 % < 4.000 %	4,872	15.53 %	5,790,171,336 JPY	10.31 %
4.000 % < 4.500 %	35	0.11 %	42,691,301 JPY	0.08 %
4.500 % < 5.000 %	0	0.00 %	0 JPY	0.00 %
5.000 % or more	0	0.00 %	0 JPY	0.00 %
<b>Total</b>	<b>31,379</b>	<b>100.00 %</b>	<b>56,165,314,785 JPY</b>	<b>100.00 %</b>

Statistics	
Minimum Interest Rate	0.00 %
Maximum Interest Rate	4.49 %
Weighted Average Interest Rate	2.07 %

**Distribution by Original Term**

Length of Original Term (months)	Number of Loans	Percentage of Loans	Outstanding Discounted Principal Balance	Percentage of Balance
6 - 12	26	0.08 %	6,293,093 JPY	0.01 %
13 - 18	33	0.11 %	8,608,123 JPY	0.02 %
19 - 24	1,326	4.23 %	467,959,119 JPY	0.83 %
25 - 30	97	0.31 %	44,378,198 JPY	0.08 %
31 - 36	11,699	37.28 %	22,618,602,050 JPY	40.27 %
37 - 42	81	0.26 %	56,535,929 JPY	0.10 %
43 - 48	1,637	5.22 %	2,002,474,031 JPY	3.57 %
49 - 54	27	0.09 %	32,187,902 JPY	0.06 %
55 - 60	15,566	49.61 %	29,253,133,964 JPY	52.08 %
61 - 66	20	0.06 %	26,861,633 JPY	0.05 %
67 - 72	683	2.18 %	1,190,417,643 JPY	2.12 %
73 - 84	184	0.59 %	457,863,100 JPY	0.82 %
<b>Total</b>	<b>31,379</b>	<b>100.00 %</b>	<b>56,165,314,785 JPY</b>	<b>100.00 %</b>

Statistics	
<b>Minimum</b> Original Term in months	10
<b>Maximum</b> Original Term in months	84
<b>Weighted Average</b> Original Term in months	50.00

### Distribution by Remaining Term

Length of Remaining Term (months)	Number of Loans	Percentage of Loans	Outstanding Discounted Principal Balance	Percentage of Balance
<= 12	7,920	25.24 %	9,649,879,678 JPY	17.18 %
13 - 18	5,069	16.15 %	9,558,880,108 JPY	17.02 %
19 - 24	3,026	9.64 %	5,561,922,424 JPY	9.90 %
25 - 30	2,262	7.21 %	4,119,172,771 JPY	7.33 %
31 - 36	4,120	13.13 %	7,479,757,894 JPY	13.32 %
37 - 42	5,576	17.77 %	11,705,748,433 JPY	20.84 %
43 - 48	2,194	6.99 %	5,037,740,305 JPY	8.97 %
49 - 54	1,034	3.30 %	2,584,313,571 JPY	4.60 %
55 - 60	110	0.35 %	276,236,712 JPY	0.49 %
61 - 66	56	0.18 %	148,143,003 JPY	0.26 %
67 - 72	7	0.02 %	25,472,611 JPY	0.05 %
73 - 84	5	0.02 %	18,047,275 JPY	0.03 %
<b>Total</b>	<b>31,379</b>	<b>100.00 %</b>	<b>56,165,314,785 JPY</b>	<b>100.00 %</b>

Statistics	
<b>Minimum</b> Remaining Term in months	1
<b>Maximum</b> Remaining Term in months	77
<b>Weighted Average</b> Remaining Term in months	27.79

**Distribution by Seasoning**

Seasoning (months)	Number of Loans	Percentage of Loans	Outstanding Discounted Principal Balance	Percentage of Balance
<= 12	2,327	7.42 %	5,415,018,735 JPY	9.64 %
13 - 18	6,049	19.28 %	12,666,753,466 JPY	22.55 %
19 - 24	10,491	33.43 %	19,768,120,536 JPY	35.20 %
25 - 30	6,741	21.48 %	11,621,921,552 JPY	20.69 %
31 - 36	2,872	9.15 %	3,909,497,155 JPY	6.96 %
37 - 42	982	3.13 %	1,117,485,117 JPY	1.99 %
43 - 48	734	2.34 %	718,466,552 JPY	1.28 %
49 - 54	799	2.55 %	707,939,405 JPY	1.26 %
55 - 60	352	1.12 %	224,879,134 JPY	0.40 %
61 - 66	27	0.09 %	13,228,818 JPY	0.02 %
67 - 72	5	0.02 %	2,004,315 JPY	0.00 %
73 - 84	0	0.00 %	0 JPY	0.00 %
<b>Total</b>	<b>31,379</b>	<b>100.00 %</b>	<b>56,165,314,785 JPY</b>	<b>100.00 %</b>

<b>Statistics</b>	
<b>Minimum</b> Seasoning in months	6
<b>Maximum</b> Seasoning in months	70
<b>Weighted Average</b> Seasoning in months	22.21

**Distribution by Type of Car**
**Type of Car**

Type of Car	Number of Loans	Percentage of Loans	Outstanding Discounted Principal Balance	Percentage of Balance
New	20,918	66.66 %	43,544,438,973 JPY	77.53 %
Used	10,461	33.34 %	12,620,875,812 JPY	22.47 %
<b>Total</b>	<b>31,379</b>	<b>100.00 %</b>	<b>56,165,314,785 JPY</b>	<b>100.00 %</b>

**Type of Car: Only Balloon Loans**

Type of Car	Number of Loans	Percentage of Loans	Outstanding Discounted Principal Balance	Percentage of Balance
New	19,585	78.60 %	41,813,725,379 JPY	83.58 %
Used	5,333	21.40 %	8,216,233,220 JPY	16.42 %
<b>Total</b>	<b>24,918</b>	<b>100.00 %</b>	<b>50,029,958,599 JPY</b>	<b>100.00 %</b>

**Type of Car: Only Equal Instalment Loans**

Type of Car	Number of Loans	Percentage of Loans	Outstanding Discounted Principal Balance	Percentage of Balance
New	1,333	20.63 %	1,730,713,594 JPY	28.21 %
Used	5,128	79.37 %	4,404,642,592 JPY	71.79 %
<b>Total</b>	<b>6,461</b>	<b>100.00 %</b>	<b>6,135,356,186 JPY</b>	<b>100.00 %</b>

**Distribution by Brand and Model**

Make	Model	Number of Loans	Percentage of Loans	Outstanding Discounted Principal Balance	Percentage of Balance
<b>Audi</b>	A1	1,063	3.39 %	1,390,198,365 JPY	2.48 %
	A3	2,850	9.08 %	4,914,031,950 JPY	8.75 %
	A4	2,355	7.51 %	5,624,031,379 JPY	10.01 %
	A5	520	1.66 %	1,307,673,598 JPY	2.33 %
	A6	679	2.16 %	1,820,176,272 JPY	3.24 %
	A7	274	0.87 %	963,023,537 JPY	1.71 %
	A8	81	0.26 %	318,142,391 JPY	0.57 %
	S1	102	0.33 %	220,891,529 JPY	0.39 %
	S3	365	1.16 %	983,234,279 JPY	1.75 %
	S4	94	0.30 %	289,747,385 JPY	0.52 %
	S5	63	0.20 %	208,922,689 JPY	0.37 %
	S6	38	0.12 %	167,965,092 JPY	0.30 %
	S7	27	0.09 %	103,727,956 JPY	0.18 %
	S8	19	0.06 %	93,471,256 JPY	0.17 %
	RS3	43	0.14 %	160,147,636 JPY	0.29 %
	RS4	16	0.05 %	52,939,392 JPY	0.09 %
	RS5	16	0.05 %	66,888,032 JPY	0.12 %
	RS6	15	0.05 %	73,297,205 JPY	0.13 %
	RS7	12	0.04 %	64,643,496 JPY	0.12 %
	Q2	60	0.19 %	178,711,222 JPY	0.32 %
	Q3	920	2.93 %	1,981,681,794 JPY	3.53 %
	Q5	583	1.86 %	1,624,639,794 JPY	2.89 %
	Q7	194	0.62 %	932,371,191 JPY	1.66 %
	RSQ3	23	0.07 %	94,336,261 JPY	0.17 %
	TT	815	2.60 %	2,167,936,421 JPY	3.86 %
	R8	11	0.04 %	57,549,841 JPY	0.10 %
	AUDI OTHERS	0	0.00 %	0 JPY	0.00 %
	<b>Subtotal</b>	<b>11,238</b>	<b>35.81 %</b>	<b>25,860,379,963 JPY</b>	<b>46.04 %</b>
<b>Bentley</b>	ARNAGE	0	0.00 %	0 JPY	0.00 %
	AZURE	0	0.00 %	0 JPY	0.00 %
	BENTAYGA	1	0.00 %	7,522,308 JPY	0.01 %
	CONTINENTAL	12	0.04 %	56,249,977 JPY	0.10 %
	FLYING SPUR	0	0.00 %	0 JPY	0.00 %
	MULSANNE	1	0.00 %	3,909,804 JPY	0.01 %
	BENTLEY OTHERS	0	0.00 %	0 JPY	0.00 %
		<b>Subtotal</b>	<b>14</b>	<b>0.04 %</b>	<b>67,682,089 JPY</b>
<b>Lamborghini</b>	AVENTADOR	1	0.00 %	5,235,654 JPY	0.01 %
	DIABLO	0	0.00 %	0 JPY	0.00 %
	GALLARDO	2	0.01 %	10,807,227 JPY	0.02 %
	HURACÁN	1	0.00 %	2,234,527 JPY	0.00 %
	MULCIELAGO	0	0.00 %	0 JPY	0.00 %
	LAMBORGHINI OTHERS	0	0.00 %	0 JPY	0.00 %
		<b>Subtotal</b>	<b>4</b>	<b>0.01 %</b>	<b>18,277,408 JPY</b>
<b>VW</b>	ARTEON	1	0.00 %	4,100,968 JPY	0.01 %
	BEETLE	2,031	6.47 %	2,929,184,909 JPY	5.22 %
	BORA	0	0.00 %	0 JPY	0.00 %
	EOS	0	0.00 %	0 JPY	0.00 %
	GOLF	7,745	24.68 %	12,350,455,942 JPY	21.99 %
	JETTA	10	0.03 %	3,194,344 JPY	0.01 %
	LUPO	1	0.00 %	1,279,719 JPY	0.00 %
	PASSAT	1,755	5.59 %	3,345,182,275 JPY	5.96 %
	POLO	4,247	13.53 %	5,007,945,888 JPY	8.92 %
	SCIROCCO	42	0.13 %	42,718,828 JPY	0.08 %
	SHARAN	693	2.21 %	1,272,599,757 JPY	2.27 %
	TIGUAN	664	2.12 %	1,288,805,123 JPY	2.29 %
	TOUAREG	71	0.23 %	165,810,386 JPY	0.30 %
	TOURAN	1,547	4.93 %	2,786,112,581 JPY	4.96 %
	UP	1,304	4.16 %	1,011,597,765 JPY	1.80 %
	VENTO	0	0.00 %	0 JPY	0.00 %
	VW OTHERS	0	0.00 %	0 JPY	0.00 %
	<b>Subtotal</b>	<b>20,111</b>	<b>64.09 %</b>	<b>30,208,988,485 JPY</b>	<b>53.78 %</b>
<b>Non VW Group Vehicles</b>		12	0.04 %	9,986,840 JPY	0.02 %
	<b>Subtotal</b>	<b>12</b>	<b>0.04 %</b>	<b>9,986,840 JPY</b>	<b>0.02 %</b>
	<b>Total</b>	<b>31,379</b>	<b>100.00 %</b>	<b>56,165,314,785 JPY</b>	<b>100.00 %</b>

**Geographic Distribution by Prefecture**

Prefecture	Number of Loans	Percentage of Loans	Outstanding Discounted Principal Balance	Percentage of Balance
Tokyo	4,782	15.24 %	9,777,786,073 JPY	17.41 %
Kanagawa	3,065	9.77 %	5,657,678,722 JPY	10.07 %
Aichi	2,274	7.25 %	3,917,641,370 JPY	6.98 %
Saitama	2,095	6.68 %	3,690,358,600 JPY	6.57 %
Osaka	1,854	5.91 %	3,520,099,824 JPY	6.27 %
Chiba	1,406	4.48 %	2,448,003,546 JPY	4.36 %
Fukuoka	1,313	4.18 %	2,390,504,074 JPY	4.26 %
Hokkaido	1,178	3.75 %	2,293,294,766 JPY	4.08 %
Hyogo	1,224	3.90 %	2,140,156,567 JPY	3.81 %
Shizuoka	927	2.95 %	1,639,956,450 JPY	2.92 %
Ibaraki	967	3.08 %	1,622,089,358 JPY	2.89 %
Hiroshima	735	2.34 %	1,190,803,487 JPY	2.12 %
Tochigi	674	2.15 %	1,188,306,714 JPY	2.12 %
Kyoto	610	1.94 %	1,035,535,513 JPY	1.84 %
Miyagi	566	1.80 %	962,615,560 JPY	1.71 %
Gunma	616	1.96 %	960,092,292 JPY	1.71 %
Gifu	485	1.55 %	789,605,670 JPY	1.41 %
Okayama	459	1.46 %	790,880,332 JPY	1.41 %
Nagano	473	1.51 %	767,686,739 JPY	1.37 %
Mie	401	1.28 %	644,434,048 JPY	1.15 %
Fukushima	358	1.14 %	570,790,013 JPY	1.02 %
Niigata	357	1.14 %	539,159,108 JPY	0.96 %
Yamaguchi	317	1.01 %	529,919,755 JPY	0.94 %
Nara	275	0.88 %	479,257,150 JPY	0.85 %
Oita	288	0.92 %	472,626,531 JPY	0.84 %
Yamanashi	233	0.74 %	430,549,780 JPY	0.77 %
Ishikawa	259	0.83 %	417,769,593 JPY	0.74 %
Shiga	251	0.80 %	403,126,986 JPY	0.72 %
Kumamoto	253	0.81 %	396,076,080 JPY	0.71 %
Kagoshima	221	0.70 %	386,842,090 JPY	0.69 %
Wakayama	206	0.66 %	383,129,383 JPY	0.68 %
Toyama	236	0.75 %	379,772,654 JPY	0.68 %
Fukui	200	0.64 %	363,887,653 JPY	0.65 %
Yamagata	222	0.71 %	342,256,058 JPY	0.61 %
Kagawa	177	0.56 %	273,089,046 JPY	0.49 %
Iwate	152	0.48 %	269,197,710 JPY	0.48 %
Nagasaki	151	0.48 %	266,726,233 JPY	0.47 %
Tokushima	148	0.47 %	260,899,842 JPY	0.46 %
Miyazaki	145	0.46 %	244,447,944 JPY	0.44 %
Saga	137	0.44 %	235,238,802 JPY	0.42 %
Ehime	139	0.44 %	206,703,881 JPY	0.37 %
Shimane	109	0.35 %	202,446,414 JPY	0.36 %
Aomori	121	0.39 %	180,547,960 JPY	0.32 %
Akita	103	0.33 %	171,998,966 JPY	0.31 %
Tottori	100	0.32 %	153,685,323 JPY	0.27 %
Kouchi	69	0.22 %	106,521,396 JPY	0.19 %
Okinawa	48	0.15 %	71,118,729 JPY	0.13 %
<b>Total</b>	<b>31,379</b>	<b>100.00 %</b>	<b>56,165,314,785 JPY</b>	<b>100.00 %</b>



**Distribution by Obligor Concentration**
**Distribution of Loan Contracts and Vehicles per Obligor**

Contract Concentration	Number of Customers	Percentage of Customers	Number of Loans	Percentage of Loans	Outstanding Discounted Principal Balance	Percentage of Balance
1	30,241	96.90 %	30,241	96.37 %	53,754,653,024 JPY	95.71 %
2	907	2.91 %	1,056	3.37 %	2,200,824,571 JPY	3.92 %
3	51	0.16 %	63	0.20 %	170,769,159 JPY	0.30 %
4	8	0.03 %	16	0.05 %	32,672,107 JPY	0.06 %
5	1	0.00 %	2	0.01 %	4,140,962 JPY	0.01 %
6 - 10	1	0.00 %	1	0.00 %	2,254,962 JPY	0.00 %
11 or more	0	0.00 %	0	0.00 %	0 JPY	0.00 %
<b>Total</b>	<b>31,209</b>	<b>100.00 %</b>	<b>31,379</b>	<b>100.00 %</b>	<b>56,165,314,785 JPY</b>	<b>100.00 %</b>

**Top 20 Obligor**

Number	Number of Contracts	Outstanding Discounted Principal Balance	Percentage of Balance
1	2	13,804,998 JPY	0.02 %
2	2	12,902,860 JPY	0.02 %
3	2	12,673,199 JPY	0.02 %
4	2	12,409,456 JPY	0.02 %
5	2	11,782,545 JPY	0.02 %
6	2	10,776,891 JPY	0.02 %
7	1	9,442,306 JPY	0.02 %
8	1	9,356,723 JPY	0.02 %
9	1	9,262,636 JPY	0.02 %
10	1	9,259,627 JPY	0.02 %
11	2	9,097,756 JPY	0.02 %
12	2	9,046,383 JPY	0.02 %
13	2	9,009,903 JPY	0.02 %
14	1	8,807,109 JPY	0.02 %
15	1	8,585,960 JPY	0.02 %
16	1	8,578,628 JPY	0.02 %
17	1	8,413,611 JPY	0.01 %
18	1	8,410,656 JPY	0.01 %
19	1	8,342,151 JPY	0.01 %
20	1	8,244,208 JPY	0.01 %
<b>Total 1 -20</b>	<b>29</b>	<b>198,207,606 JPY</b>	<b>0.35 %</b>

Remarks:

Figures above are calculated based on each of the Sub-Servicers respectively and not across both of the Sub-Servicers.

### Distribution by Contract Start Month

Origination Month	Number of Loans	Percentage of Loans	Outstanding Discounted Principal Balance	Percentage of Balance
07.2012	1	0.00 %	187,126 JPY	0.00 %
08.2012	1	0.00 %	206,353 JPY	0.00 %
09.2012	3	0.01 %	1,610,836 JPY	0.00 %
10.2012	0	0.00 %	0 JPY	0.00 %
11.2012	1	0.00 %	339,030 JPY	0.00 %
12.2012	6	0.02 %	3,053,274 JPY	0.01 %
01.2013	5	0.02 %	1,072,561 JPY	0.00 %
02.2013	4	0.01 %	2,627,078 JPY	0.00 %
03.2013	9	0.03 %	5,638,461 JPY	0.01 %
04.2013	2	0.01 %	498,414 JPY	0.00 %
05.2013	1	0.00 %	1,798,223 JPY	0.00 %
06.2013	87	0.28 %	47,169,783 JPY	0.08 %
07.2013	61	0.19 %	30,872,156 JPY	0.05 %
08.2013	48	0.15 %	36,900,991 JPY	0.07 %
09.2013	85	0.27 %	51,642,566 JPY	0.09 %
10.2013	70	0.22 %	56,495,415 JPY	0.10 %
11.2013	80	0.25 %	66,155,194 JPY	0.12 %
12.2013	141	0.45 %	121,166,745 JPY	0.22 %
01.2014	92	0.29 %	82,508,673 JPY	0.15 %
02.2014	168	0.54 %	153,601,539 JPY	0.27 %
03.2014	250	0.80 %	219,127,940 JPY	0.39 %
04.2014	68	0.22 %	65,379,314 JPY	0.12 %
05.2014	104	0.33 %	93,608,387 JPY	0.17 %
06.2014	160	0.51 %	145,229,912 JPY	0.26 %
07.2014	113	0.36 %	103,733,004 JPY	0.18 %
08.2014	89	0.28 %	98,219,897 JPY	0.17 %
09.2014	160	0.51 %	171,608,365 JPY	0.31 %
10.2014	108	0.34 %	106,066,987 JPY	0.19 %
11.2014	119	0.38 %	130,408,577 JPY	0.23 %
12.2014	179	0.57 %	217,363,002 JPY	0.39 %
01.2015	126	0.40 %	131,891,520 JPY	0.23 %
02.2015	210	0.67 %	246,733,634 JPY	0.44 %
03.2015	242	0.77 %	275,774,336 JPY	0.49 %
04.2015	106	0.34 %	115,314,048 JPY	0.21 %
05.2015	192	0.61 %	236,336,523 JPY	0.42 %
06.2015	572	1.82 %	741,731,751 JPY	1.32 %
07.2015	468	1.49 %	582,510,660 JPY	1.04 %
08.2015	501	1.60 %	678,971,664 JPY	1.21 %
09.2015	737	2.35 %	1,095,454,722 JPY	1.95 %
10.2015	402	1.28 %	574,491,835 JPY	1.02 %
11.2015	466	1.49 %	736,023,260 JPY	1.31 %
12.2015	1,020	3.25 %	1,591,656,117 JPY	2.83 %
01.2016	918	2.93 %	1,569,269,707 JPY	2.79 %
02.2016	1,308	4.17 %	2,273,315,806 JPY	4.05 %
03.2016	2,021	6.44 %	3,552,011,418 JPY	6.32 %
04.2016	1,008	3.21 %	1,899,645,244 JPY	3.38 %
05.2016	1,378	4.39 %	2,534,605,707 JPY	4.51 %
06.2016	1,754	5.59 %	3,185,600,890 JPY	5.67 %
07.2016	1,579	5.03 %	2,855,282,970 JPY	5.08 %
08.2016	1,798	5.73 %	3,398,854,288 JPY	6.05 %
09.2016	2,415	7.70 %	4,708,737,645 JPY	8.38 %
10.2016	1,567	4.99 %	3,085,039,036 JPY	5.49 %
11.2016	2,151	6.85 %	4,368,796,776 JPY	7.78 %
12.2016	809	2.58 %	1,626,549,718 JPY	2.90 %
01.2017	649	2.07 %	1,396,893,199 JPY	2.49 %
02.2017	788	2.51 %	1,705,732,720 JPY	3.04 %
03.2017	1,187	3.78 %	2,544,943,727 JPY	4.53 %
04.2017	465	1.48 %	1,023,837,326 JPY	1.82 %
05.2017	527	1.68 %	1,211,525,734 JPY	2.16 %
06.2017	590	1.88 %	1,333,186,381 JPY	2.37 %
07.2017	326	1.04 %	705,723,321 JPY	1.26 %
08.2017	305	0.97 %	730,626,263 JPY	1.30 %
09.2017	338	1.08 %	821,394,329 JPY	1.46 %
10.2017	167	0.53 %	404,948,639 JPY	0.72 %
11.2017	74	0.24 %	207,614,068 JPY	0.37 %
12.2017	0	0.00 %	0 JPY	0.00 %
01.2018	0	0.00 %	0 JPY	0.00 %
02.2018	0	0.00 %	0 JPY	0.00 %
03.2018	0	0.00 %	0 JPY	0.00 %
04.2018	0	0.00 %	0 JPY	0.00 %
05.2018	0	0.00 %	0 JPY	0.00 %
<b>Total</b>	<b>31,379</b>	<b>100.00 %</b>	<b>56,165,314,785 JPY</b>	<b>100.00 %</b>

### Distribution by Contract End Month

Maturity Month	Number of Loans	Percentage of Loans	Outstanding Discounted Principal Balance	Percentage of Balance
06.2018	674	2.15 %	572,061,132 JPY	1.02 %
07.2018	536	1.71 %	425,793,102 JPY	0.76 %
08.2018	477	1.52 %	459,228,028 JPY	0.82 %
09.2018	766	2.44 %	765,796,317 JPY	1.36 %
10.2018	424	1.35 %	379,155,094 JPY	0.68 %
11.2018	536	1.71 %	514,945,528 JPY	0.92 %
12.2018	824	2.63 %	1,013,146,478 JPY	1.80 %
01.2019	528	1.68 %	724,588,548 JPY	1.29 %
02.2019	723	2.30 %	975,688,617 JPY	1.74 %
03.2019	1,173	3.74 %	1,723,457,502 JPY	3.07 %
04.2019	534	1.70 %	900,926,499 JPY	1.60 %
05.2019	725	2.31 %	1,195,092,833 JPY	2.13 %
06.2019	929	2.96 %	1,662,852,090 JPY	2.96 %
07.2019	691	2.20 %	1,223,216,180 JPY	2.18 %
08.2019	717	2.28 %	1,300,044,488 JPY	2.31 %
09.2019	1,068	3.40 %	2,073,524,885 JPY	3.69 %
10.2019	720	2.29 %	1,354,900,805 JPY	2.41 %
11.2019	944	3.01 %	1,944,341,660 JPY	3.46 %
12.2019	525	1.67 %	970,574,280 JPY	1.73 %
01.2020	416	1.33 %	740,526,991 JPY	1.32 %
02.2020	587	1.87 %	1,031,107,965 JPY	1.84 %
03.2020	799	2.55 %	1,475,936,509 JPY	2.63 %
04.2020	287	0.91 %	575,424,661 JPY	1.02 %
05.2020	412	1.31 %	768,352,018 JPY	1.37 %
06.2020	448	1.43 %	850,681,547 JPY	1.51 %
07.2020	325	1.04 %	543,316,366 JPY	0.97 %
08.2020	409	1.30 %	769,912,303 JPY	1.37 %
09.2020	476	1.52 %	880,579,401 JPY	1.57 %
10.2020	281	0.90 %	496,693,726 JPY	0.88 %
11.2020	323	1.03 %	577,989,428 JPY	1.03 %
12.2020	417	1.33 %	699,816,923 JPY	1.25 %
01.2021	520	1.66 %	923,957,545 JPY	1.65 %
02.2021	782	2.49 %	1,451,608,944 JPY	2.58 %
03.2021	1,108	3.53 %	2,018,951,481 JPY	3.59 %
04.2021	551	1.76 %	1,030,965,337 JPY	1.84 %
05.2021	742	2.36 %	1,354,457,664 JPY	2.41 %
06.2021	802	2.56 %	1,595,136,497 JPY	2.84 %
07.2021	812	2.59 %	1,609,378,502 JPY	2.87 %
08.2021	930	2.96 %	1,899,505,877 JPY	3.38 %
09.2021	1,236	3.94 %	2,587,049,432 JPY	4.61 %
10.2021	772	2.46 %	1,693,824,725 JPY	3.02 %
11.2021	1,024	3.26 %	2,320,853,400 JPY	4.13 %
12.2021	361	1.15 %	807,340,927 JPY	1.44 %
01.2022	316	1.01 %	764,692,840 JPY	1.36 %
02.2022	374	1.19 %	876,810,198 JPY	1.56 %
03.2022	589	1.88 %	1,326,849,249 JPY	2.36 %
04.2022	260	0.83 %	571,603,145 JPY	1.02 %
05.2022	294	0.94 %	690,443,946 JPY	1.23 %
06.2022	299	0.95 %	731,708,210 JPY	1.30 %
07.2022	186	0.59 %	453,721,700 JPY	0.81 %
08.2022	198	0.63 %	486,339,246 JPY	0.87 %
09.2022	189	0.60 %	496,704,451 JPY	0.88 %
10.2022	101	0.32 %	263,142,515 JPY	0.47 %
11.2022	61	0.19 %	152,697,449 JPY	0.27 %
12.2022	26	0.08 %	63,803,452 JPY	0.11 %
01.2023	14	0.04 %	32,344,914 JPY	0.06 %
02.2023	19	0.06 %	50,175,024 JPY	0.09 %
03.2023	22	0.07 %	49,862,373 JPY	0.09 %
04.2023	10	0.03 %	23,532,630 JPY	0.04 %
05.2023	19	0.06 %	56,518,319 JPY	0.10 %
06.2023	16	0.05 %	36,243,773 JPY	0.06 %
07.2023	6	0.02 %	15,945,397 JPY	0.03 %
08.2023	7	0.02 %	20,862,658 JPY	0.04 %
09.2023	14	0.04 %	39,956,270 JPY	0.07 %
10.2023	10	0.03 %	26,612,497 JPY	0.05 %
11.2023	3	0.01 %	8,522,408 JPY	0.02 %
12.2023	2	0.01 %	8,886,175 JPY	0.02 %
01.2024	1	0.00 %	2,680,216 JPY	0.00 %
02.2024	2	0.01 %	6,245,190 JPY	0.01 %
03.2024	1	0.00 %	4,450,254 JPY	0.01 %
04.2024	1	0.00 %	3,210,776 JPY	0.01 %
05.2024	0	0.00 %	0 JPY	0.00 %
06.2024	0	0.00 %	0 JPY	0.00 %
07.2024	1	0.00 %	4,185,784 JPY	0.01 %
08.2024	0	0.00 %	0 JPY	0.00 %
09.2024	1	0.00 %	2,750,144 JPY	0.00 %
10.2024	3	0.01 %	11,111,347 JPY	0.02 %
<b>Total</b>	<b>31,379</b>	<b>100.00 %</b>	<b>56,165,314,785 JPY</b>	<b>100.00 %</b>

**Distribution by Monthly Payment**

Monthly Payment	Number of Loans	Percentage of Loans	Outstanding Discounted Principal Balance	Percentage of Balance
<= 10,000 JPY	1,572	5.01 %	1,796,839,945 JPY	3.20 %
10,001 JPY - 20,000 JPY	5,887	18.76 %	7,334,036,200 JPY	13.06 %
20,001 JPY - 30,000 JPY	8,491	27.06 %	12,285,031,839 JPY	21.87 %
30,001 JPY - 40,000 JPY	6,314	20.12 %	11,183,615,296 JPY	19.91 %
40,001 JPY - 50,000 JPY	3,578	11.40 %	7,384,186,763 JPY	13.15 %
50,001 JPY - 60,000 JPY	2,045	6.52 %	4,773,562,451 JPY	8.50 %
60,001 JPY - 70,000 JPY	1,104	3.52 %	2,928,511,603 JPY	5.21 %
70,001 JPY - 80,000 JPY	633	2.02 %	1,836,480,643 JPY	3.27 %
80,001 JPY - 90,000 JPY	456	1.45 %	1,428,945,127 JPY	2.54 %
90,001 JPY - 100,000 JPY	363	1.16 %	1,236,320,014 JPY	2.20 %
100,001 JPY - 110,000 JPY	244	0.78 %	871,431,348 JPY	1.55 %
110,001 JPY - 120,000 JPY	169	0.54 %	693,069,814 JPY	1.23 %
120,001 JPY - 130,000 JPY	135	0.43 %	586,359,051 JPY	1.04 %
130,001 JPY - 140,000 JPY	86	0.27 %	374,834,748 JPY	0.67 %
140,001 JPY - 150,000 JPY	63	0.20 %	304,352,995 JPY	0.54 %
>= 150,001 JPY	239	0.76 %	1,147,736,948 JPY	2.04 %
<b>Total</b>	<b>31,379</b>	<b>100.00 %</b>	<b>56,165,314,785 JPY</b>	<b>100.00 %</b>

**Distribution by Bonus Payment**

Bonus Payment	Number of Loans	Percentage of Loans	Outstanding Discounted Principal Balance	Percentage of Balance
No Bonus Payment	18,834	60.02 %	32,813,823,159 JPY	58.42 %
1 JPY - 25,000 JPY	287	0.91 %	373,321,077 JPY	0.66 %
25,001 JPY - 50,000 JPY	3,149	10.04 %	4,642,600,184 JPY	8.27 %
50,001 JPY - 75,000 JPY	1,105	3.52 %	1,815,262,331 JPY	3.23 %
75,001 JPY - 100,000 JPY	4,327	13.79 %	7,894,159,449 JPY	14.06 %
100,001 JPY - 125,000 JPY	542	1.73 %	1,038,117,633 JPY	1.85 %
125,001 JPY - 150,000 JPY	1,690	5.39 %	3,711,840,618 JPY	6.61 %
150,001 JPY - 175,000 JPY	184	0.59 %	411,438,542 JPY	0.73 %
175,001 JPY - 200,000 JPY	779	2.48 %	1,981,439,963 JPY	3.53 %
200,001 JPY - 225,000 JPY	48	0.15 %	111,021,219 JPY	0.20 %
225,001 JPY - 250,000 JPY	200	0.64 %	573,168,245 JPY	1.02 %
250,001 JPY - 275,000 JPY	16	0.05 %	49,602,448 JPY	0.09 %
275,001 JPY - 300,000 JPY	133	0.42 %	436,126,235 JPY	0.78 %
300,001 JPY - 325,000 JPY	8	0.03 %	27,772,049 JPY	0.05 %
325,001 JPY - 350,000 JPY	27	0.09 %	89,831,688 JPY	0.16 %
350,001 JPY - 375,000 JPY	5	0.02 %	21,138,956 JPY	0.04 %
375,001 JPY - 400,000 JPY	19	0.06 %	85,442,026 JPY	0.15 %
400,001 JPY - 425,000 JPY	0	0.00 %	0 JPY	0.00 %
425,001 JPY - 450,000 JPY	7	0.02 %	23,319,552 JPY	0.04 %
450,001 JPY - 475,000 JPY	0	0.00 %	0 JPY	0.00 %
475,001 JPY - 500,000 JPY	15	0.05 %	50,944,454 JPY	0.09 %
500,001 JPY or more	4	0.01 %	14,944,957 JPY	0.03 %
<b>Total</b>	<b>31,379</b>	<b>100.00 %</b>	<b>56,165,314,785 JPY</b>	<b>100.00 %</b>

**Distribution by Motor Type**

Motor Type	Number of Loans	Percentage of Loans	Outstanding Discounted Principal Balance	Percentage of Balance
EA 189	0	0.00 %	0 JPY	0.00 %
Other	31,379	100.00 %	56,165,314,785 JPY	100.00 %
<b>Total</b>	<b>31,379</b>	<b>100.00 %</b>	<b>56,165,314,785 JPY</b>	<b>100.00 %</b>

## Disclaimer

This presentation contains forward-looking statements and information on the business development of the Volkswagen Group. These statements may be spoken or written and can be recognized by terms such as "expects", "anticipates", "intends", "plans", "believes", "seeks", "estimates", "will", or words with similar meaning. These statements are based on assumptions relating to the development of the economies of individual countries, and in particular of the automotive industry, which we have made on the basis of the information available to us and which we consider to be realistic at the time of going to press. The estimates given involve a degree of risk, and the actual developments may differ from those forecast.

Consequently, any unexpected fall in demand or economic stagnation in our key sales markets, such as in Western Europe (and especially Germany) or in the USA, Brazil or China, will have a corresponding impact on the development of our business. The same applies in the event of a significant shift in current exchange rates relative to the US dollar, sterling, yen, Brazilian real, Chinese renminbi and Czech koruna.

If any of these or other risks occur, or if the assumptions underlying any of these statements prove incorrect, the actual results may significantly differ from those expressed or implied by such statements.

We do not update forward-looking statements retrospectively. Such statements are valid on the date of publication and can be superceded.

This information does not constitute an offer to exchange or sell or an offer to exchange or buy any securities.