

Deal Name: Driver Japan six

Originator: Volkswagen Financial Services Japan Ltd.
Gotenyama Trust Tower 17F
7-35 Kitashinagawa 4-chome, Shinagawa-ku
Tokyo 140-0001, Japan

Reporting Entity: Volkswagen Financial Services Japan Ltd.
Treasury Dept.
Gotenyama Trust Tower 17F
7-35 Kitashinagawa 4-chome, Shinagawa-ku
Tokyo 140-0001, Japan
Tel No.: +81(0)3-5792-7261
Fax No.: +81(0)3-3280-7365
E-mail: vwfsjp.abs@vwfs.com

**Trustor of the First Trust:
Servicer:** Volkswagen Financial Services Japan Ltd.

**Trustee of the First Trust:
Trustee of the Second Trust:** Deutsche Trust Company Limited Japan
Sanno Park Tower, 11-1,
Nagatacho 2-chome, Chiyoda-ku,
Tokyo, 100-6172, Japan
Trust Business Administration Department
Tel No.: +81(0)3-5156-5637
Fax No.: +81(0)3-5156-5658
E-mail: DB_Trust_Trust@list.db.com



Contents

Page	Tables of Contents
1	Front Page
2	Contents
3	Deal Overview
4	Deal Overview: Counterparties I
5	Deal Overview: Counterparties II
6	Information regarding the TBI and ABL to the Second Trust
7	Pool Information
8	Available Distribution
9	Waterfall
10	Credit Enhancement
11	Cumulative Gross Loss Ratio & Performance Trigger
12	Cumulative Gross Loss Ratio & Performance Trigger (Chart)
13	Default & Delinquencies
14	Run Out Schedule (Previous)
15	Run Out Schedule
16	Expected Amortization to the Second Trust
17	Sub-Servicer
18	Brand
19	New and Used
20	Product Type
21	RV
22	Brand New and Used
23	Customer Type
24	Outstanding Discounted Principal Balance
25	Original Principal Amount
26	Interest Rate paid by the Obligor
27	Original Term
28	Remaining Term
29	Seasoning
30	Type of Car
31	Brand and Model
32	Geographic Dist. by Prefecture
33	Obligor Concentration
34	Contract Start Month
35	Contract End Month
36	Monthly payment
37	Bonus payment
38	Mortor Type

Deal Overview

Cut Off Date:	2017/02/10		
Trust Commencement Date:	2017/02/23	Legal Maturity of the First Trust:	2025/06/27
Monthly Period:	2018/04/11	to	2018/05/10
Reporting Date:	2018/05/17		
Reporting Frequency:	monthly		
Period No.:	15		
Remittance Date:	2018/05/22		
Advance Payment Date:	2018/05/22		
Cash Adjustment Date:	2018/05/22		
Additional Entrustment Date:	2018/05/24		
Trust Calculation Date:	2018/05/24		
Trust Calculation Period:	2018/04/26	to	2018/05/24
First Trust Payment Date:	2018/05/25		
Second Trust Payment Date:	2018/05/28		
Interest Calculation Period:	2018/04/28	to	2018/05/28
Next Reporting Date:	2018/06/15		

Pool information at the Initial Cut off Date

	Number of Contracts	Outstanding Discounted Principal Balance	Outstanding Nominal Balance
Outstanding Pool	30,757	64,171,706,472 JPY	67,028,993,300 JPY

Credit Type	Percentage of Loans	Outstanding Discounted Principal Balance	Percentage of Balance
Balloon	76.13 %	55,443,642,000 JPY	86.40 %
Equal Instalment Loan	23.87 %	8,728,064,472 JPY	13.60 %
Total	100.00 %	64,171,706,472 JPY	100.00 %

Type of Car	Percentage of Loans	Outstanding Discounted Principal Balance	Percentage of Balance
New	66.66 %	49,506,381,305 JPY	77.15 %
Used	33.34 %	14,665,325,167 JPY	22.85 %
Total	100.00 %	64,171,706,472 JPY	100.00 %

Deal Overview: Counterparties I

Joint Lead Managers:

Shinsei Securities Co., Ltd.
 Nihonbashi Muromachi Nomura Building, 4-3,
 Nihonbashi-muromachi 2-chome,
 Chuo-ku,
 Tokyo 103-0022, Japan

BNP Paribas Securities (Japan) Limited
 GranTokyo North Tower, 9-1,
 Marunouchi 1-chome,
 Chiyoda-ku,
 Tokyo 100-6740, Japan

Trust Management Account Bank:

The Bank of Tokyo-Mitsubishi UFJ, Ltd.
 4-2 Toranomom 1-chome,
 Minato-ku
 Tokyo 105-0001, Japan

Rating								
Moody's			Fitch			R&I		
Long Term	Short Term	Outlook	Long Term	Short Term	Outlook	Long Term	Short Term	Outlook
n.a.	n.a.	n.a.	n.a.	n.a.	n.a.	n.a.	n.a.	n.a.
n.a.	n.a.	n.a.	n.a.	n.a.	n.a.	n.a.	n.a.	n.a.
A1	P-1	Stable	A	F1	Stable	AA-	a-1+	Stable

Originator:

Trustor of the First Trust:

Servicer:

Volkswagen Financial Services Japan Ltd.
 Gotenyama Trust Tower 17F
 7-35 Kitashinagawa 4-chome, Shinagawa-ku
 Tokyo 140-0001, Japan

Trustee of the First Trust:

Trustee of the Second Trust:

Deutsche Trust Company Limited Japan
 Attn.: Driver Japan Six
 Trust Business Administration Department

ABL Lender to the First Trust:

Trustor of the Second Trust:

Shinsei Securities Co., Ltd.

Seller of the Trust Beneficial

Interest of the Second Trust

Shinsei Securities Co., Ltd.
 BNP Paribas Securities (Japan) Limited

Deal Overview: Counterparties II

Rating Agencies:

Moody's SF Japan K.K.

Attn.: Driver Japan six
 Structure Finance Group Monitoring Division
 5-1 Atago 2-chome, Minato-ku
 Tokyo 105-6220, Japan
 E-mail: monitor.msfi@moodys.com

Fitch Ratings Japan Limited

Attn.: Driver Japan six
 Structured Finance
 Kojimachi Crystal City East Wing 3rd Floor,
 4-8 Kōjimachi, Chiyoda-ku,
 Tokyo 102-0083, Japan
 E-mail: tokyo.surveillance@fitchratings.com

Rating and Investment Information, Inc.

Attn.: Monitoring Group Department:
 Structured Finance Department
 TERRACE SQUARE, 3-22,
 Kanda Nishikicho, Chiyoda-ku,
 Tokyo 101-0054, Japan
 E-mail: sfmonitor@r-i.co.jp

Rating of VW

Volkswagen Financial Services AG

Volkswagen AG

Rating								
Moody's			Fitch			R&I		
Short Term	Long Term	Outlook	Short Term	Long Term	Outlook	Short Term	Long Term	Outlook
P-2	A3	Stable	n.a.	n.a.	n.a.	n.a.	n.a.	n.a.
P-2	A3	Stable	F2	BBB+	Stable	n.a.	n.a.	n.a.

Information regarding Trust Beneficial Interest of the Second Trust & Asset Backed Loan to the Second Trust

Rating Details

Rating at Issue Date

	<u>TBI</u>	<u>ABL</u>
Moody's	Aaa(sf)	Aaa(sf)
Fitch	AAAsf	AAAsf
R&I	AAA	AAA

Current Rating

	<u>TBI</u>	<u>ABL</u>
Moody's	Aaa(sf)	Aaa(sf)
Fitch	AAAsf	AAAsf
R&I	AAA	AAA

Information on TBI & ABL

	<u>TBI</u>	<u>ABL</u>
Initial Balance	39,200,000,000 JPY	20,800,000,000 JPY
Expected Maturity Date	2021/06/28	2021/06/28
Legal Maturity of the Second Trust	2025/06/30	2025/06/30
Payment Dates	28th	28th
Business Day Convention	Modified Following	Modified Following
Listing	None	—

Information on Interest

	<u>TBI</u>	<u>ABL</u>
Fixed/ Floating	Fixed	Fixed
Current Coupon	0.19%	0.19%
Day Count Convention	30/360	30/360

Selling Restriction

The holders of the Beneficial Interest and the ABL Lenders* are prohibited from dividing, assigning, pledging or creating any other security interest over any of the Beneficial Interest and the Asset Backed Loans without the prior written approval of the Trustee of the Second Trust.

(*)The holders of the Beneficial Interest and the ABL Lenders are limited to specified investors (*tokutei toushika*) as defined under Paragraph 31 of Article 2 of the Financial Instruments and Exchange Act (Law no.25 of 1948 as amended).

Clean-Up Call

VWFS Japan as the Trustor of the First Trust has a right at its option to exercise a clean-up call to repurchase of all, but not part, of the outstanding Auto Loan Receivables from the Trustee of the First Trust on any Trust Calculation Date, the Discounted Principal Balance of all outstanding Auto Loan Receivables is expected to be less than ten percent (10%) of the Discounted Principal Balance of the Initial Auto Loan Receivables as of the Initial Cut-off Date after the distribution pursuant to Article 18.1 of the First Trust Agreement on the immediately following First Trust Payment Date.

Pool Information
Pool Balance on Initial Cut-Off Date

Status	Number of Contracts	Outstanding Discounted Principal Balance
Normal	30,757	64,171,706,472 JPY
Cancellation	0	0 JPY
Early Termination	0	0 JPY
Defaulted Receivables	0	0 JPY
Matured	0	0 JPY
Refinance Option	0	0 JPY
Repurchase	0	0 JPY
Total	30,757	64,171,706,472 JPY

Pool Balance before entrustment of Additional Auto Loan Receivables

Status	Number of Contracts on previous EoP	Outstanding Discounted Principal Balance on previous EoP	Number of Contracts "as Collections" during the relevant Monthly Period*	Outstanding Discounted Principal Balance "as Collections" during the relevant Monthly Period*	Number of Contracts EoP before entrustment of Additional Auto Loan Receivables	Outstanding Discounted Principal Balance EoP before entrustment of Additional Auto Loan Receivables
Normal	33,186	60,687,680,364 JPY	32,296	1,066,130,705 JPY	32,296	58,349,237,723 JPY
Cancellation	0	0 JPY	0	0 JPY	0	0 JPY
Early Termination	0	0 JPY	548	1,014,012,610 JPY	0	0 JPY
Defaulted Receivables	0	0 JPY	8	22,395,509 JPY	0	0 JPY
Matured	0	0 JPY	267	146,223,664 JPY	0	0 JPY
Refinance Option	0	0 JPY	67	89,680,153 JPY	0	0 JPY
Repurchase	0	0 JPY	0	0 JPY	0	0 JPY
Total	33,186	60,687,680,364 JPY	33,186	2,338,442,641 JPY	32,296	58,349,237,723 JPY

Pool Balance after entrustment of Additional Auto Loan Receivables

Status	Number of Contracts EoP before entrustment of Additional Auto Loan Receivables	Outstanding Discounted Principal Balance EoP before entrustment of Additional Auto Loan Receivables	Number of Contracts of Additional Auto Loan Receivables	Outstanding Discounted Principal Balance of Additional Auto Loan Receivables	Number of Contracts EoP after entrustment of Additional Auto Loan Receivables	Outstanding Discounted Principal Balance EoP after entrustment of Additional Auto Loan Receivables
Normal	32,296	58,349,237,723 JPY	0	0 JPY	32,296	58,349,237,723 JPY
Cancellation	0	0 JPY	0	0 JPY	0	0 JPY
Early Termination	0	0 JPY	0	0 JPY	0	0 JPY
Defaulted Receivables	0	0 JPY	0	0 JPY	0	0 JPY
Matured	0	0 JPY	0	0 JPY	0	0 JPY
Refinance Option	0	0 JPY	0	0 JPY	0	0 JPY
Repurchase	0	0 JPY	0	0 JPY	0	0 JPY
Total	32,296	58,349,237,723 JPY	0	0 JPY	32,296	58,349,237,723 JPY

Limits on Eligibility Criteria

Status Limits on Eligibility Criteria (v) (including Additional Entrustment)	Current Exposure in %	Limits in % of the aggregate Discounted Principal Balance of the Auto Loan Receivables outstanding	Status
(i) on Used Purchased Vehicle	22.55 %	35 %	-*
(ii) on Non-VW Vehicles	0.02 %	5 %	-*
(iii) on Balloon Payment	45.62 %	50 %	-*

(*) not applicable since the Revolving Period ended

Outstanding Balances

Monthly Period: from 2018/04/11 to 2018/05/10
Reporting Date: 2018/05/17
Trust Calculation Date: 2018/05/24

Outstanding Balances

	Number of Contracts	Aggregate Amount of the Discounted Principal Balance	Aggregate Amount of the Nominal Balance
Balance on the previous EoP	33,186	60,687,680,364 JPY	62,901,963,400 JPY
Balance after counting on the Collections during the relevant Monthly Period	32,296	58,349,237,723 JPY	60,425,894,700 JPY
Balance of Additional Auto Loan Receivables	0	0 JPY	0 JPY
Aggregate Amount of Auto Loan Receivables	32,296	58,349,237,723 JPY	60,425,894,700 JPY

Collections

	Number of Contracts	Aggregate Amount of the Discounted Principal Balance	Aggregate Amount of the Nominal Balance
Collections: Amortization of current contracts	32,296	1,066,130,705 JPY	1,172,086,700 JPY
Collections: Cancellation	0	0 JPY	0 JPY
Collections: Early Termination	548	1,014,012,610 JPY	1,015,406,162 JPY
Collections: Defaulted Receivables	8	22,395,509 JPY	22,456,804 JPY
Collections: Matured	267	146,223,664 JPY	146,427,200 JPY
Collections: Refinance Option	67	89,680,153 JPY	89,810,000 JPY
Collections: Repurchase	0	0 JPY	0 JPY
Sum	33,186	2,338,442,641 JPY	2,446,186,866 JPY

Available Distribution Amount

	Number of Contracts	Aggregate Amount of the Nominal Balance
(a) the Collections for the Monthly Period with respect to such Trust Calculation Date	33,186	2,446,186,866 JPY
(b) drawings from the Cash Collateral Ledger in accordance with Article 18.3 of the First Trust Agreement	0	0 JPY
(c) net investment earnings from Eligible Investments	0	0 JPY
(d) net proceeds from the sale or disposal of the Trust Assets of the First Trust	0	0 JPY
(e) any amount which is carried over from the immediately preceding Trust Calculation Date	0	0 JPY
Sum	33,186	2,446,186,866 JPY

Waterfall

There is no distinction between principal and interest, and all collections go through a single priority of payments			
		Payment	Remaining Amount
Available Distribution Amount	plus	2,446,186,866 JPY	2,446,186,866 JPY
(a) an amount necessary for the payment of all taxes and public charges to be paid to the relevant public authority by the immediately following First Trust Payment Date.	less	0 JPY	2,446,186,866 JPY
(b) an amount necessary for the payment of all Fees for the Trustee of the First Trust to be paid to the Trustee of the First Trust by the immediately following First Trust Payment Date.	less	546,188 JPY	2,445,640,678 JPY
(c) an amount necessary for the payment of the Servicing Fee to be paid to the Servicer by the immediately following First Trust Payment Date.	less	54,618,911 JPY	2,391,021,767 JPY
(d) an amount necessary for the payment of the Trust Expenses of the First Trust as provided in Article 23.1 (including the Rating Fees, Costs of the Second Trust and those fees not otherwise covered by (b) or (c) above) to be paid to the relevant party by the immediately following First Trust Payment Date (including any amounts advanced by the Trustee of the First Trust pursuant to Article 23.3)	less	561,632 JPY	2,390,460,135 JPY
(e) an amount necessary for the payment of overdue and unpaid interest on the Asset Backed Loans to the First Trust (if any) to be paid to the Trustee of the Second Trust by the immediately following First Trust Payment Date.	less	0 JPY	2,390,460,135 JPY
(f) an amount necessary for the payment to the Trustee of the Second Trust of interest on the Asset Backed Loan to the First Trust accruing during the relevant Interest Calculation Period	less	8,711,648 JPY	2,381,748,487 JPY
(g) an amount necessary to top up the balance thereof until it is equal to the Cash Collateral Ledger Target Balance	less	0 JPY	2,381,748,487 JPY
(h) (i) prior to the expiration of the Revolving Period: an amount necessary for the redemption of any Additional Senior Beneficial Interest;	less	2,381,748,487 JPY	0 JPY
(ii) following the expiration of the Revolving Period and prior to the occurrence of an Early Amortization Event, an amount necessary for the payment to the Trustee of the Second Trust of the Asset Backed Loan Principal Payment Amount for the relevant First Trust Payment Date.			
(iii) following the occurrence of the Early Amortization Event, an amount necessary for the payment to the Trustee of the Second Trust of the remaining principal balance of the Asset Backed Loan to the First Trust.			
(i) an amount necessary for the payment to the Trustee of the First Trust of any Indemnified Amounts which are not compensated by the Trustor of the First Trust	less	0 JPY	0 JPY
(j) an amount necessary for the payment to the Subordinated Beneficiary of the Subordinated Beneficial Principal Payment Amount for the relevant First Trust Payment Date.	less	0 JPY	0 JPY
(k) (i) prior to the expiration of the Revolving Period, then (x) if a transfer is made under (j) above, such remaining amount will be transferred to the Expenses Distribution Ledger for payment to the Subordinated Beneficiary as a payment of earnings on the Subordinated Beneficial Interest, and such payment shall be made on the First Trust Payment Date immediately following such Trust Calculation Date or (y) if no transfer is made under (j) above, such remaining amount will be carried forward to the next Trust Calculation Date.	less	0 JPY	0 JPY
(ii) following the expiration of the Revolving Period and prior to the occurrence of an Early Amortization Event, then such remaining amount will be transferred to the Expenses Distribution Ledger for payment to the Subordinated Beneficiary as a payment of earnings on the Subordinated Beneficial Interest, and such payment shall be made on the First Trust Payment Date immediately following such Trust Calculation Date.			
(iii) following the occurrence of an Early Amortization Event, the remaining amount in the Trust Collection Ledger will be carried forward to the next Trust Calculation Date.			

Credit Enhancement

Subordinated Principal Balance as of the relevant First Trust Payment Date

	Percentage of Aggregate Discounted Principal Balance	Value
(i) the aggregate amount of the Discounted Principal Balance of all Auto Loan Receivables outstanding		58,349,237,723 JPY
(ii) Asset Backed Loan Principal Balance on the relevant First Trust Payment Date		52,639,186,588 JPY
Overcollateralization (= (i) - (ii))	9.79 %	5,710,051,135 JPY
Trust Collection Ledger which is carried over from the immediately preceding Trust Calculation Date	0.00 %	0 JPY
The amount in the Cash Collateral Ledger	0.59 %	345,000,000 JPY
Subordinated Principal Balance	10.38 %	6,055,051,135 JPY

Trust Management Account (TMA)

	in JPY	+/-	in JPY (previous)
Initial Balance on Cash Entrustment Date	345,000,000 JPY		
Outstanding Balance on First Trust Payment Date	345,000,000 JPY	0 JPY	345,000,000 JPY
(a) Expenses Distribution Ledger	0 JPY	0 JPY	0 JPY
(b) Trust Collection Ledger	0 JPY	0 JPY	0 JPY
(c) Cash Collateral Ledger	345,000,000 JPY	0 JPY	345,000,000 JPY
Cash Collateral Ledger Target Balance	345,000,000 JPY		

Calculation of Credit Enhancement

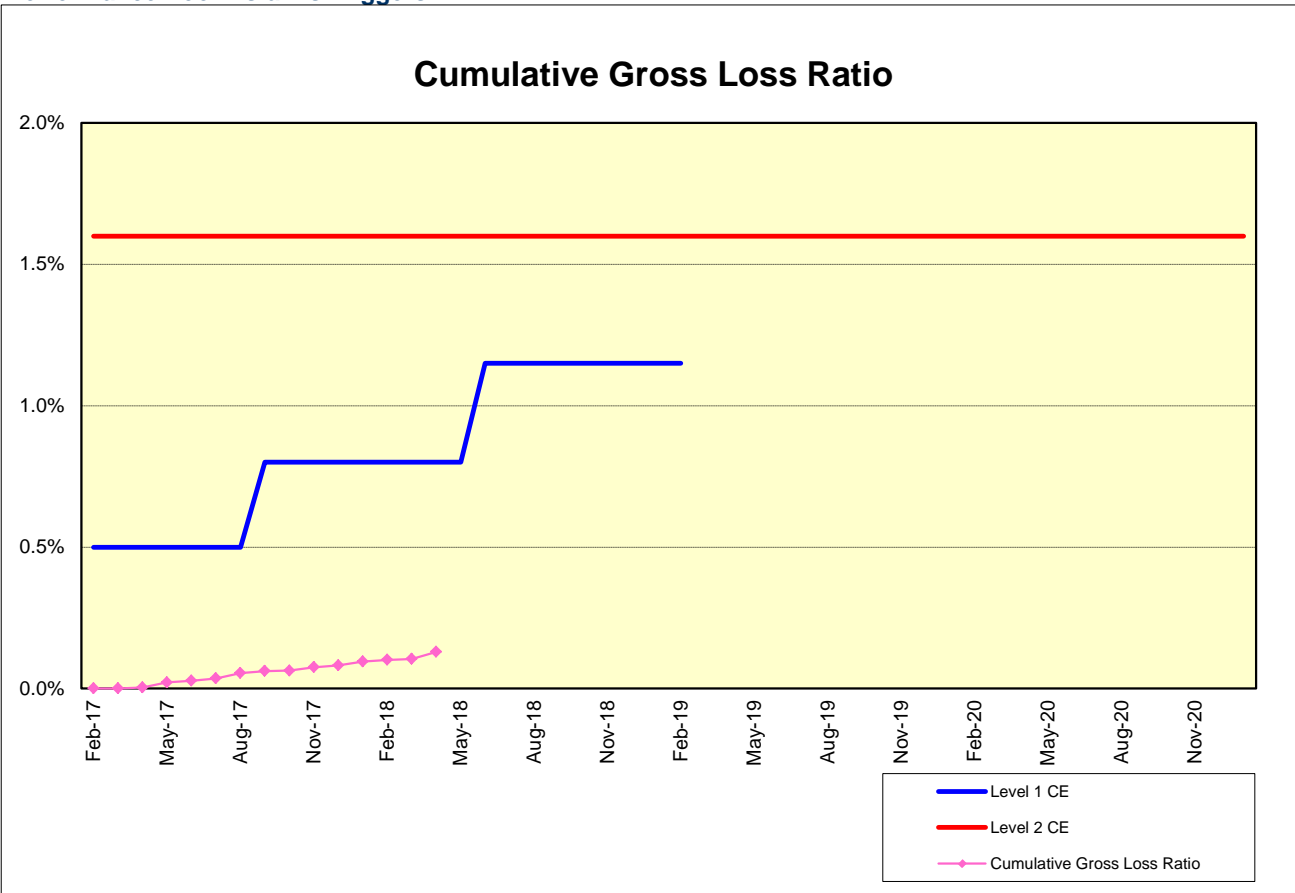
Driver Japan six's Credit Enhancement consists of the items listed above in the Subordinated Principal Balance as of the relevant date of determination (immediately following the First Trust Payment Date). The result provides an absolute value, which will be applied to the (amortized) Aggregate Discounted Principal Balance as of the end of the relevant date.

The transaction has a Revolving Period of 12 months until February 2018.

Asset Backed Loan Overcollateralization Percentage is (i) prior to the expiration of the Revolving Period, 8.5%, and (ii) following the expiration of the Revolving Period, 11.5%; provided, in each case no Credit Enhancement Increase Condition shall be in effect. After a Level 1 Credit Enhancement Increase Condition in effect, 17% and after a Level 2 Credit Enhancement Increase Condition is in effect, 100%.

Cumulative Gross Loss & Cumulative Repurchased Receivables

Performance Pool vis-a-vis Triggers



Cumulative Repurchased Receivables

	Number of Contracts	Repurchase Price
Beginning of Period	0	0 JPY
Repurchased Receivables	0	0 JPY
End of Period	0	0 JPY

Defaulted and Delinquent Contracts

Information of Delinquencies and Defaults

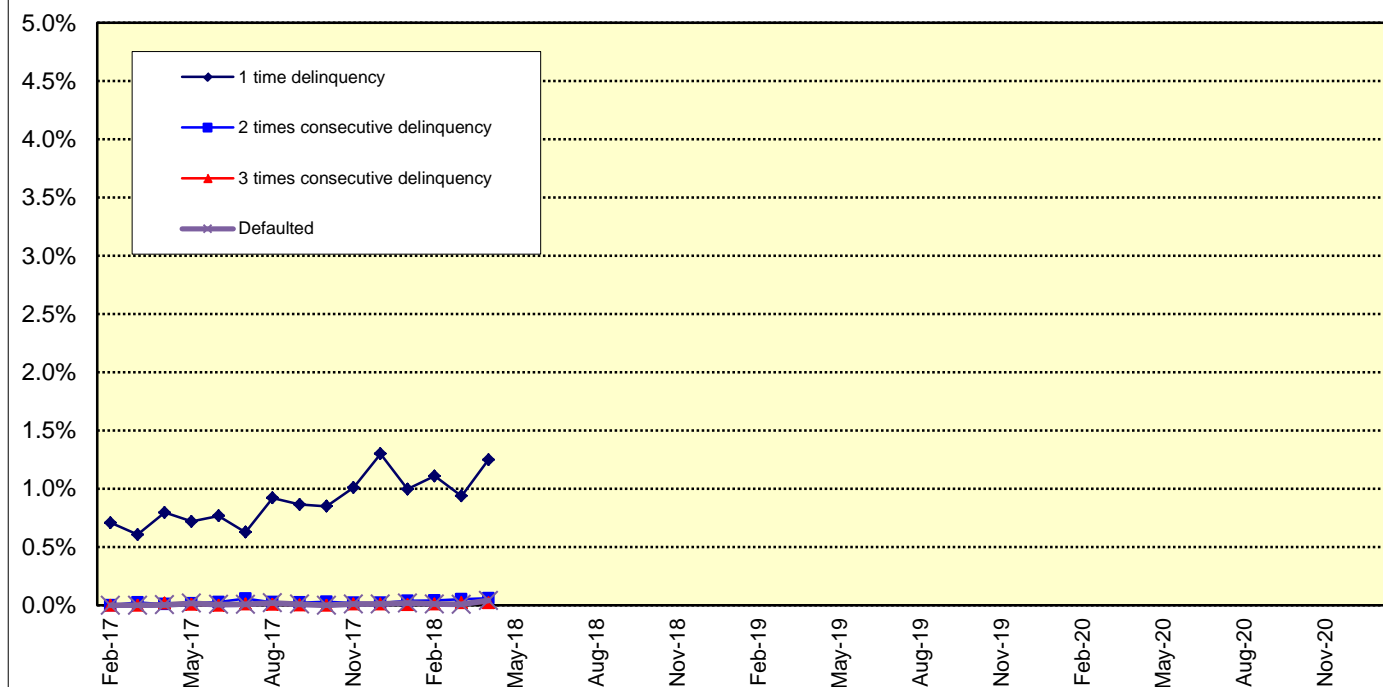
Current Reporting Period	Number of Contracts	Percentage of Contracts (*)	Outstanding Discounted Principal Balance	Percentage of Principal Balance (*)	Outstanding Nominal Balance	Percentage of Nominal Balance (*)
Delinquent	439	1.32 %	777,789,863 JPY	1.28 %	810,019,800 JPY	1.29 %
Default	8	0.02 %	22,395,509 JPY	0.04 %	22,456,804 JPY	0.04 %

(*) Based on the previous EoP

Delinquency Profile (Information Purpose Only)

Days in Arrears	Number of Contracts	Percentage of Contracts	Outstanding Discounted Principal Balance	Percentage of Principal Balance	Outstanding Nominal Balance	Percentage of Nominal Balance
1	417	1.29 %	730,058,453 JPY	1.25 %	760,202,200 JPY	1.26 %
2	18	0.06 %	37,628,408 JPY	0.06 %	39,389,300 JPY	0.07 %
3	4	0.01 %	10,103,002 JPY	0.02 %	10,428,300 JPY	0.02 %
Total	439	1.36 %	777,789,863 JPY	1.33 %	810,019,800 JPY	1.34 %

Delinquent / Defaulted (Gross Loss) Ratio



Run Out Schedule

ROS on the previous EoP on 2018/04/10

Next Payment Month	Number of Contracts	ABS Outstanding Principal	ABS Outstanding Interest	Outstanding Installment	ABS Remaining Principal	ABS Remaining Interest	ABS Remaining Installment
03.2018	33,186	60,687,680,364 JPY	2,214,283,036 JPY	62,901,963,400 JPY	0 JPY	0 JPY	0 JPY
04.2018	33,186	59,365,028,122 JPY	2,106,147,378 JPY	61,471,175,500 JPY	1,322,652,242 JPY	108,135,658 JPY	1,430,787,900 JPY
05.2018	32,851	57,871,718,817 JPY	2,000,380,283 JPY	59,872,099,100 JPY	1,493,309,305 JPY	105,767,095 JPY	1,599,076,400 JPY
06.2018	32,315	55,652,885,330 JPY	1,897,195,370 JPY	57,550,080,700 JPY	2,218,833,487 JPY	103,184,913 JPY	2,322,018,400 JPY
07.2018	31,571	53,551,236,849 JPY	1,797,870,751 JPY	55,349,107,600 JPY	2,101,648,481 JPY	99,324,619 JPY	2,200,973,100 JPY
08.2018	30,999	51,959,401,041 JPY	1,702,343,459 JPY	53,661,744,500 JPY	1,591,835,808 JPY	95,527,292 JPY	1,687,363,100 JPY
09.2018	30,489	50,257,146,745 JPY	1,609,664,055 JPY	51,866,810,800 JPY	1,702,254,296 JPY	92,679,404 JPY	1,794,933,700 JPY
10.2018	29,687	48,955,553,456 JPY	1,519,952,844 JPY	50,475,506,300 JPY	1,301,593,289 JPY	89,711,211 JPY	1,391,304,500 JPY
11.2018	29,237	47,565,109,481 JPY	1,432,612,719 JPY	48,997,722,200 JPY	1,390,443,975 JPY	87,340,125 JPY	1,477,784,100 JPY
12.2018	28,676	44,876,711,322 JPY	1,347,748,178 JPY	46,224,459,500 JPY	2,688,398,159 JPY	84,864,541 JPY	2,773,262,700 JPY
01.2019	27,817	43,168,042,308 JPY	1,267,706,692 JPY	44,435,749,000 JPY	1,708,669,014 JPY	80,041,486 JPY	1,788,710,500 JPY
02.2019	27,277	41,549,747,484 JPY	1,190,737,816 JPY	42,740,485,300 JPY	1,618,294,824 JPY	76,968,876 JPY	1,695,263,700 JPY
03.2019	26,523	39,382,793,250 JPY	1,116,624,150 JPY	40,499,417,400 JPY	2,166,954,234 JPY	74,113,666 JPY	2,241,067,900 JPY
04.2019	25,293	37,889,436,741 JPY	1,046,248,459 JPY	38,935,685,200 JPY	1,493,356,509 JPY	70,375,691 JPY	1,563,732,200 JPY
05.2019	24,735	36,216,166,221 JPY	978,426,079 JPY	37,194,592,300 JPY	1,673,270,520 JPY	67,822,380 JPY	1,741,092,900 JPY
06.2019	23,982	33,885,887,214 JPY	913,413,186 JPY	34,799,300,400 JPY	2,330,279,007 JPY	65,012,893 JPY	2,395,291,900 JPY
07.2019	23,026	31,862,101,627 JPY	852,299,173 JPY	32,714,400,800 JPY	2,023,785,587 JPY	61,114,013 JPY	2,084,899,600 JPY
08.2019	22,318	30,211,171,071 JPY	794,631,729 JPY	31,005,802,800 JPY	1,650,930,556 JPY	57,667,444 JPY	1,708,598,000 JPY
09.2019	21,583	28,182,573,054 JPY	739,645,146 JPY	28,922,218,200 JPY	2,028,598,017 JPY	54,986,583 JPY	2,083,584,900 JPY
10.2019	20,488	26,689,334,845 JPY	687,772,755 JPY	27,377,107,600 JPY	1,493,238,209 JPY	51,872,391 JPY	1,545,110,600 JPY
11.2019	19,754	24,845,741,872 JPY	638,330,528 JPY	25,484,072,400 JPY	1,843,592,973 JPY	49,442,227 JPY	1,893,035,200 JPY
12.2019	18,785	23,115,792,721 JPY	591,693,879 JPY	23,707,486,600 JPY	1,729,949,151 JPY	46,636,649 JPY	1,776,585,800 JPY
01.2020	18,248	21,971,762,221 JPY	548,136,279 JPY	22,519,898,500 JPY	1,144,030,500 JPY	43,557,600 JPY	1,187,588,100 JPY
02.2020	17,823	20,883,740,787 JPY	506,632,813 JPY	21,390,373,600 JPY	1,088,021,434 JPY	41,503,466 JPY	1,129,524,900 JPY
03.2020	17,225	19,561,693,003 JPY	467,031,897 JPY	20,028,724,900 JPY	1,322,047,784 JPY	39,600,916 JPY	1,361,648,700 JPY
04.2020	16,399	18,753,715,542 JPY	429,611,858 JPY	19,183,327,400 JPY	807,977,461 JPY	37,420,039 JPY	845,397,500 JPY
05.2020	16,103	17,886,756,142 JPY	393,666,558 JPY	18,280,422,700 JPY	866,959,400 JPY	35,945,300 JPY	902,904,700 JPY
06.2020	15,669	16,754,099,542 JPY	359,289,458 JPY	17,113,389,000 JPY	1,132,656,600 JPY	34,377,100 JPY	1,167,033,700 JPY
07.2020	15,207	15,739,487,068 JPY	327,012,632 JPY	16,066,499,700 JPY	1,014,612,474 JPY	32,276,826 JPY	1,046,889,300 JPY
08.2020	14,871	14,902,925,198 JPY	296,695,602 JPY	15,199,620,800 JPY	836,561,870 JPY	30,317,030 JPY	866,878,900 JPY
09.2020	14,452	14,133,238,896 JPY	267,938,904 JPY	14,401,177,800 JPY	769,686,302 JPY	28,756,698 JPY	798,443,000 JPY
10.2020	13,966	13,522,127,614 JPY	240,644,286 JPY	13,762,771,900 JPY	611,111,282 JPY	27,294,618 JPY	638,405,900 JPY
11.2020	13,672	12,915,172,781 JPY	214,570,019 JPY	13,129,742,800 JPY	606,954,833 JPY	26,074,267 JPY	633,029,100 JPY
12.2020	13,340	11,868,492,729 JPY	189,713,571 JPY	12,058,206,300 JPY	1,046,680,052 JPY	24,856,448 JPY	1,071,536,500 JPY
01.2021	12,908	11,043,134,036 JPY	166,956,964 JPY	11,210,091,000 JPY	825,358,693 JPY	22,756,607 JPY	848,115,300 JPY
02.2021	12,371	10,170,165,338 JPY	145,775,962 JPY	10,315,941,300 JPY	872,968,698 JPY	21,181,002 JPY	894,149,700 JPY
03.2021	11,572	9,158,094,842 JPY	126,245,958 JPY	9,284,340,800 JPY	1,012,070,496 JPY	19,530,004 JPY	1,031,600,500 JPY
04.2021	10,439	8,547,950,285 JPY	108,604,415 JPY	8,656,554,700 JPY	610,144,557 JPY	17,641,543 JPY	627,786,100 JPY
05.2021	9,877	7,867,877,243 JPY	92,182,357 JPY	7,960,059,600 JPY	680,073,042 JPY	16,422,058 JPY	696,495,100 JPY
06.2021	9,122	7,020,734,987 JPY	77,089,113 JPY	7,097,824,100 JPY	847,142,256 JPY	15,093,244 JPY	862,235,500 JPY
07.2021	8,307	6,097,645,514 JPY	63,704,386 JPY	6,161,349,900 JPY	923,089,473 JPY	13,384,727 JPY	936,474,200 JPY
08.2021	7,485	5,276,777,521 JPY	52,100,179 JPY	5,328,877,900 JPY	820,867,993 JPY	11,604,207 JPY	832,472,200 JPY
09.2021	6,542	4,237,377,772 JPY	42,001,728 JPY	4,279,379,500 JPY	1,039,399,749 JPY	10,098,451 JPY	1,049,498,200 JPY
10.2021	5,290	3,564,204,358 JPY	33,860,342 JPY	3,598,064,700 JPY	673,173,414 JPY	8,141,386 JPY	681,314,800 JPY
11.2021	4,503	2,723,689,157 JPY	26,970,043 JPY	2,750,659,200 JPY	840,515,201 JPY	6,890,299 JPY	847,405,500 JPY
12.2021	3,458	2,262,646,208 JPY	21,605,092 JPY	2,284,251,300 JPY	461,042,949 JPY	5,364,951 JPY	466,407,900 JPY
01.2022	3,091	1,931,818,650 JPY	17,136,650 JPY	1,948,955,300 JPY	330,827,558 JPY	4,468,442 JPY	335,296,000 JPY
02.2022	2,772	1,596,502,430 JPY	13,318,170 JPY	1,609,820,600 JPY	335,316,220 JPY	3,818,480 JPY	339,134,700 JPY
03.2022	2,392	1,154,247,382 JPY	10,148,918 JPY	1,164,396,300 JPY	442,255,048 JPY	3,169,252 JPY	445,424,300 JPY
04.2022	1,797	953,989,552 JPY	7,779,048 JPY	961,768,600 JPY	200,257,830 JPY	2,369,870 JPY	202,627,700 JPY
05.2022	1,535	748,313,636 JPY	5,797,564 JPY	754,111,200 JPY	205,675,916 JPY	1,981,484 JPY	207,657,400 JPY
06.2022	1,239	524,706,594 JPY	4,199,406 JPY	528,906,000 JPY	223,607,042 JPY	1,598,158 JPY	225,205,200 JPY
07.2022	932	377,932,052 JPY	3,033,248 JPY	380,965,300 JPY	146,774,542 JPY	1,166,158 JPY	147,940,700 JPY
08.2022	745	275,671,223 JPY	2,172,977 JPY	277,844,200 JPY	102,260,829 JPY	860,271 JPY	103,121,100 JPY
09.2022	544	159,073,870 JPY	1,524,230 JPY	160,598,100 JPY	116,597,353 JPY	648,747 JPY	117,246,100 JPY
10.2022	351	90,267,200 JPY	1,121,100 JPY	91,388,300 JPY	68,806,670 JPY	403,130 JPY	69,209,800 JPY
11.2022	246	57,132,332 JPY	877,668 JPY	58,010,000 JPY	33,134,868 JPY	243,432 JPY	33,378,300 JPY
12.2022	184	44,292,749 JPY	708,551 JPY	45,001,300 JPY	12,839,583 JPY	169,117 JPY	13,008,700 JPY
01.2023	158	35,850,590 JPY	576,710 JPY	36,427,300 JPY	8,442,159 JPY	131,841 JPY	8,574,000 JPY
02.2023	143	30,039,270 JPY	469,230 JPY	30,508,500 JPY	5,811,320 JPY	107,480 JPY	5,918,800 JPY
03.2023	123	25,011,500 JPY	378,500 JPY	25,390,000 JPY	5,027,770 JPY	90,730 JPY	5,118,500 JPY
04.2023	100	20,881,806 JPY	302,294 JPY	21,184,100 JPY	4,129,694 JPY	76,206 JPY	4,205,900 JPY
05.2023	90	17,103,466 JPY	238,434 JPY	17,341,900 JPY	3,778,340 JPY	63,860 JPY	3,842,200 JPY
06.2023	71	13,411,116 JPY	185,884 JPY	13,597,000 JPY	3,692,350 JPY	52,550 JPY	3,744,900 JPY
07.2023	54	9,913,164 JPY	144,136 JPY	10,057,300 JPY	3,497,952 JPY	41,748 JPY	3,539,700 JPY
08.2023	48	7,476,993 JPY	113,107 JPY	7,590,100 JPY	2,436,171 JPY	31,029 JPY	2,467,200 JPY
09.2023	39	5,850,380 JPY	89,620 JPY	5,940,000 JPY	1,626,613 JPY	23,487 JPY	1,650,100 JPY
10.2023	25	4,795,064 JPY	71,136 JPY	4,866,200 JPY	1,055,316 JPY	18,484 JPY	1,073,800 JPY
11.2023	15	4,166,883 JPY	55,917 JPY	4,222,800 JPY	628,181 JPY	15,219 JPY	643,400 JPY
12.2023	12	2,868,255 JPY	42,645 JPY	2,910,900 JPY	1,298,628 JPY	13,272 JPY	1,311,900 JPY
01.2024	10	2,314,191 JPY	33,509 JPY	2,347,700 JPY	554,064 JPY	9,136 JPY	563,200 JPY
02.2024	9	1,952,261 JPY	26,139 JPY	1,978,400 JPY	361,930 JPY	7,370 JPY	369,300 JPY
03.2024	7	1,670,980 JPY	19,920 JPY	1,690,900 JPY	281,281 JPY	6,219 JPY	287,500 JPY
04.2024	6	1,442,602 JPY	14,598 JPY	1,457,200 JPY	228,378 JPY	5,322 JPY	233,700 JPY
05.2024	5	1,264,097 JPY	10,003 JPY	1,274,100 JPY	178,505 JPY	4,595 JPY	183,100 JPY
06.2024	5	1,085,024 JPY	5,976 JPY	1,091,000 JPY	179,073 JPY	4,027 JPY	183,100 JPY
07.2024	5	415,380 JPY	2,520 JPY	417,900 JPY	669,644 JPY	3,456 JPY	673,100 JPY
08.2024	4	263,803 JPY	1,197 JPY	265,000 JPY	151,577 JPY	1,323 JPY	152,900 JPY
09.2024	4	111,744 JPY	356 JPY	112,100 JPY	152,059 JPY	841 JPY	152,900 JPY
10.2024	3	0 JPY	0 JPY	0 JPY	111,744 JPY	356 JPY	112,100 JPY

Run Out Schedule

ROS on the relevant EoP on 2018/05/10

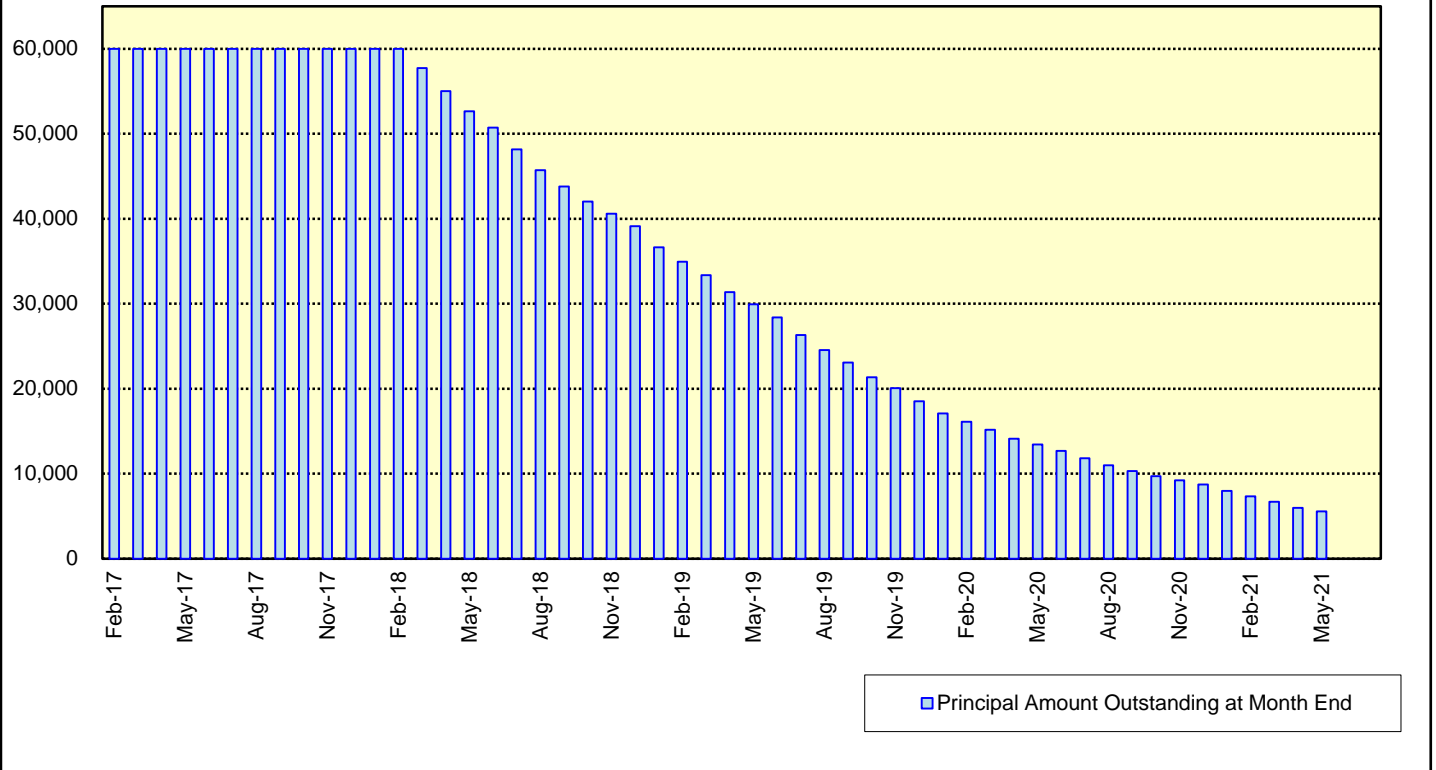
Next Payment Month	Number of Contracts	ABS Outstanding Principal	ABS Outstanding Interest	Outstanding Installment	ABS Remaining Principal	ABS Remaining Interest	ABS Remaining Installment
04.2018	32,296	58,349,237,723 JPY	2,076,656,977 JPY	60,425,894,700 JPY	0 JPY	0 JPY	0 JPY
05.2018	32,296	56,923,556,316 JPY	1,972,697,784 JPY	58,896,254,100 JPY	1,425,681,407 JPY	103,959,193 JPY	1,529,640,600 JPY
06.2018	31,798	54,784,781,861 JPY	1,871,216,139 JPY	56,655,998,000 JPY	2,138,774,455 JPY	101,481,645 JPY	2,240,256,100 JPY
07.2018	31,095	52,737,104,006 JPY	1,773,476,794 JPY	54,510,580,800 JPY	2,047,677,855 JPY	97,739,345 JPY	2,145,417,200 JPY
08.2018	30,544	51,180,879,093 JPY	1,679,440,507 JPY	52,860,319,600 JPY	1,556,224,913 JPY	94,036,287 JPY	1,650,261,200 JPY
09.2018	30,047	49,515,155,386 JPY	1,588,191,414 JPY	51,103,346,800 JPY	1,665,723,707 JPY	91,249,093 JPY	1,756,972,800 JPY
10.2018	29,261	48,239,789,468 JPY	1,499,847,132 JPY	49,739,636,600 JPY	1,275,365,918 JPY	88,344,282 JPY	1,363,710,200 JPY
11.2018	28,825	46,881,488,797 JPY	1,413,826,203 JPY	48,295,315,000 JPY	1,358,300,671 JPY	86,020,929 JPY	1,444,321,600 JPY
12.2018	28,280	44,245,252,561 JPY	1,330,225,039 JPY	45,575,477,800 JPY	2,636,236,236 JPY	83,601,164 JPY	2,719,837,400 JPY
01.2019	27,444	42,563,719,223 JPY	1,251,356,277 JPY	43,815,075,500 JPY	1,681,533,338 JPY	78,868,762 JPY	1,760,402,100 JPY
02.2019	26,912	40,983,811,356 JPY	1,175,508,844 JPY	42,155,320,200 JPY	1,579,907,867 JPY	75,847,433 JPY	1,655,755,300 JPY
03.2019	26,181	38,866,081,885 JPY	1,102,447,115 JPY	39,968,529,000 JPY	2,117,729,471 JPY	73,061,729 JPY	2,190,791,200 JPY
04.2019	24,983	37,390,910,924 JPY	1,033,034,076 JPY	38,423,945,000 JPY	1,475,170,961 JPY	69,413,039 JPY	1,544,584,000 JPY
05.2019	24,434	35,746,069,878 JPY	966,140,422 JPY	36,712,210,300 JPY	1,644,841,046 JPY	66,893,654 JPY	1,711,734,700 JPY
06.2019	23,692	33,444,363,325 JPY	902,010,975 JPY	34,346,374,300 JPY	2,301,706,553 JPY	64,129,447 JPY	2,365,836,000 JPY
07.2019	22,747	31,447,220,726 JPY	841,729,574 JPY	32,288,950,300 JPY	1,997,142,599 JPY	60,281,401 JPY	2,057,424,000 JPY
08.2019	22,044	29,822,626,906 JPY	784,851,994 JPY	30,607,478,900 JPY	1,624,593,820 JPY	56,877,580 JPY	1,681,471,400 JPY
09.2019	21,317	27,822,638,743 JPY	730,613,257 JPY	28,553,252,000 JPY	1,999,988,163 JPY	54,238,737 JPY	2,054,226,900 JPY
10.2019	20,238	26,350,086,802 JPY	679,445,098 JPY	27,029,531,900 JPY	1,472,551,941 JPY	51,168,159 JPY	1,526,720,100 JPY
11.2019	19,511	24,534,469,073 JPY	630,671,627 JPY	25,165,140,700 JPY	1,815,617,729 JPY	48,773,471 JPY	1,864,391,200 JPY
12.2019	18,553	22,824,804,951 JPY	584,662,149 JPY	23,409,467,100 JPY	1,709,664,122 JPY	46,009,478 JPY	1,755,673,600 JPY
01.2020	18,022	21,694,702,977 JPY	541,692,423 JPY	22,236,395,400 JPY	1,130,101,974 JPY	42,969,726 JPY	1,173,071,700 JPY
02.2020	17,605	20,623,366,559 JPY	500,749,041 JPY	21,124,115,600 JPY	1,071,336,418 JPY	40,943,382 JPY	1,112,279,800 JPY
03.2020	17,016	19,325,928,922 JPY	461,678,878 JPY	19,787,607,800 JPY	1,297,437,637 JPY	39,070,163 JPY	1,336,507,800 JPY
04.2020	16,208	18,528,569,966 JPY	424,747,834 JPY	18,953,317,800 JPY	797,358,956 JPY	36,931,044 JPY	834,290,000 JPY
05.2020	15,917	17,679,033,168 JPY	389,269,732 JPY	18,068,302,900 JPY	849,536,798 JPY	35,478,102 JPY	885,014,900 JPY
06.2020	15,494	16,565,277,611 JPY	355,324,389 JPY	16,920,602,000 JPY	1,113,755,557 JPY	33,945,343 JPY	1,147,700,900 JPY
07.2020	15,041	15,564,168,401 JPY	323,439,499 JPY	15,887,607,900 JPY	1,001,109,210 JPY	31,884,890 JPY	1,032,994,100 JPY
08.2020	14,712	14,735,617,538 JPY	293,484,862 JPY	15,029,102,400 JPY	828,550,863 JPY	29,954,637 JPY	858,505,500 JPY
09.2020	14,296	13,974,354,076 JPY	265,073,524 JPY	14,239,427,600 JPY	761,263,462 JPY	28,411,338 JPY	789,674,800 JPY
10.2020	13,818	13,375,343,776 JPY	238,105,824 JPY	13,613,449,600 JPY	599,010,300 JPY	26,967,700 JPY	625,978,000 JPY
11.2020	13,533	12,777,478,278 JPY	212,332,422 JPY	12,989,810,700 JPY	597,865,498 JPY	25,773,402 JPY	623,638,900 JPY
12.2020	13,204	11,741,704,331 JPY	187,755,169 JPY	11,929,459,500 JPY	1,035,773,947 JPY	24,577,253 JPY	1,060,351,200 JPY
01.2021	12,777	10,931,554,334 JPY	165,253,966 JPY	11,096,808,300 JPY	810,149,997 JPY	22,501,203 JPY	832,651,200 JPY
02.2021	12,253	10,071,599,623 JPY	144,298,577 JPY	10,215,898,200 JPY	859,954,711 JPY	20,955,389 JPY	880,910,100 JPY
03.2021	11,467	9,072,847,832 JPY	124,970,068 JPY	9,197,817,900 JPY	998,751,791 JPY	19,328,509 JPY	1,018,080,300 JPY
04.2021	10,350	8,468,798,290 JPY	107,504,410 JPY	8,576,302,700 JPY	604,049,542 JPY	17,465,658 JPY	621,515,200 JPY
05.2021	9,795	7,794,821,717 JPY	91,246,683 JPY	7,886,068,400 JPY	673,976,573 JPY	16,257,727 JPY	690,234,300 JPY
06.2021	9,046	6,959,012,148 JPY	76,306,752 JPY	7,035,318,900 JPY	835,809,569 JPY	14,939,931 JPY	850,749,500 JPY
07.2021	8,241	6,041,315,701 JPY	63,050,099 JPY	6,104,365,800 JPY	917,696,447 JPY	13,256,653 JPY	930,953,100 JPY
08.2021	7,422	5,228,729,622 JPY	51,563,278 JPY	5,280,292,900 JPY	812,586,079 JPY	11,486,821 JPY	824,072,900 JPY
09.2021	6,486	4,200,285,687 JPY	41,567,013 JPY	4,241,852,700 JPY	1,028,443,935 JPY	9,996,265 JPY	1,038,440,200 JPY
10.2021	5,243	3,531,345,330 JPY	33,502,670 JPY	3,564,848,000 JPY	668,940,357 JPY	8,064,343 JPY	677,004,700 JPY
11.2021	4,462	2,700,289,882 JPY	26,681,318 JPY	2,726,971,200 JPY	831,055,448 JPY	6,821,352 JPY	837,876,800 JPY
12.2021	3,429	2,242,973,557 JPY	21,366,043 JPY	2,264,339,600 JPY	457,316,325 JPY	5,315,275 JPY	462,631,600 JPY
01.2022	3,065	1,913,739,392 JPY	16,937,708 JPY	1,930,677,100 JPY	329,234,165 JPY	4,428,335 JPY	333,662,500 JPY
02.2022	2,747	1,581,542,595 JPY	13,156,205 JPY	1,594,698,800 JPY	332,196,797 JPY	3,781,503 JPY	335,978,300 JPY
03.2022	2,371	1,142,345,209 JPY	10,018,691 JPY	1,152,363,900 JPY	439,197,386 JPY	3,137,514 JPY	442,334,900 JPY
04.2022	1,779	944,195,586 JPY	7,675,814 JPY	951,871,400 JPY	198,149,623 JPY	2,342,877 JPY	200,492,500 JPY
05.2022	1,519	739,594,875 JPY	5,717,025 JPY	745,311,900 JPY	204,600,711 JPY	1,958,789 JPY	206,559,500 JPY
06.2022	1,225	519,220,163 JPY	4,139,137 JPY	523,359,300 JPY	220,374,712 JPY	1,577,888 JPY	221,952,600 JPY
07.2022	922	373,362,089 JPY	2,986,011 JPY	376,348,100 JPY	145,858,074 JPY	1,153,126 JPY	147,011,200 JPY
08.2022	736	271,649,655 JPY	2,136,845 JPY	273,786,500 JPY	101,712,434 JPY	849,166 JPY	102,561,600 JPY
09.2022	537	156,801,191 JPY	1,497,909 JPY	158,299,100 JPY	114,848,464 JPY	638,936 JPY	115,487,400 JPY
10.2022	346	88,337,679 JPY	1,100,321 JPY	89,438,000 JPY	68,463,512 JPY	397,588 JPY	68,861,100 JPY
11.2022	243	55,485,784 JPY	861,616 JPY	56,347,400 JPY	32,851,895 JPY	238,705 JPY	33,090,600 JPY
12.2022	181	42,929,805 JPY	696,595 JPY	43,626,400 JPY	12,555,979 JPY	165,021 JPY	12,721,000 JPY
01.2023	155	34,771,881 JPY	568,219 JPY	35,340,100 JPY	8,157,924 JPY	128,376 JPY	8,286,300 JPY
02.2023	140	29,245,429 JPY	463,571 JPY	29,709,000 JPY	5,526,452 JPY	104,648 JPY	5,631,100 JPY
03.2023	120	24,503,162 JPY	375,038 JPY	24,878,200 JPY	4,742,267 JPY	88,533 JPY	4,830,800 JPY
04.2023	98	20,525,708 JPY	300,392 JPY	20,826,100 JPY	3,977,454 JPY	74,646 JPY	4,052,100 JPY
05.2023	88	16,900,082 JPY	237,618 JPY	17,137,700 JPY	3,625,626 JPY	62,774 JPY	3,688,400 JPY
06.2023	69	13,360,920 JPY	185,680 JPY	13,546,600 JPY	3,539,162 JPY	51,938 JPY	3,591,100 JPY
07.2023	53	9,888,032 JPY	144,068 JPY	10,032,100 JPY	3,472,888 JPY	41,612 JPY	3,514,500 JPY
08.2023	47	7,476,993 JPY	113,107 JPY	7,590,100 JPY	2,411,039 JPY	30,961 JPY	2,442,000 JPY
09.2023	39	5,850,380 JPY	89,620 JPY	5,940,000 JPY	1,626,613 JPY	23,487 JPY	1,650,100 JPY
10.2023	25	4,795,064 JPY	71,136 JPY	4,866,200 JPY	1,055,316 JPY	18,484 JPY	1,073,800 JPY
11.2023	15	4,166,883 JPY	55,917 JPY	4,222,800 JPY	628,181 JPY	15,219 JPY	643,400 JPY
12.2023	12	2,868,255 JPY	42,645 JPY	2,910,900 JPY	1,298,628 JPY	13,272 JPY	1,311,900 JPY
01.2024	10	2,314,191 JPY	33,509 JPY	2,347,700 JPY	554,064 JPY	9,136 JPY	563,200 JPY
02.2024	9	1,952,261 JPY	26,139 JPY	1,978,400 JPY	361,930 JPY	7,370 JPY	369,300 JPY
03.2024	7	1,670,980 JPY	19,920 JPY	1,690,900 JPY	281,281 JPY	6,219 JPY	287,500 JPY
04.2024	6	1,442,602 JPY	14,598 JPY	1,457,200 JPY	228,378 JPY	5,322 JPY	233,700 JPY
05.2024	5	1,264,097 JPY	10,003 JPY	1,274,100 JPY	178,505 JPY	4,595 JPY	183,100 JPY
06.2024	5	1,085,024 JPY	5,976 JPY	1,091,000 JPY	179,073 JPY	4,027 JPY	183,100 JPY
07.2024	5	415,380 JPY	2,520 JPY	417,900 JPY	669,644 JPY	3,456 JPY	673,100 JPY
08.2024	4	263,803 JPY	1,197 JPY	265,000 JPY	151,577 JPY	1,323 JPY	152,900 JPY
09.2024	4	111,744 JPY	356 JPY	112,100 JPY	152,059 JPY	841 JPY	152,900 JPY
10.2024	3	0 JPY	0 JPY	0 JPY	111,744 JPY	356 JPY	112,100 JPY

Expected Amortisation

Expected Amortization to the Second Trust

JPY mil.

Assuming a Clean-Up Call at 10% of the Initial Outstanding Balance, annual prepayments of 10% and 0% defaults.



Distribution by Sub-Servicer

Sub-Servicer	Number of Loans	Percentage of Loans	Outstanding Principal Balance	Percentage of Balance
Cedyna	19,024	58.91 %	35,092,638,157 JPY	60.14 %
Jaccs	13,272	41.09 %	23,256,599,566 JPY	39.86 %
Total	32,296	100.00 %	58,349,237,723 JPY	100.00 %

Distribution by Brand

Make	Number of Loans	Percentage of Loans	Outstanding Discounted Principal Balance	Percentage of Balance
VW	20,674	64.01 %	31,245,580,851 JPY	53.55 %
Audi	11,592	35.89 %	27,002,114,079 JPY	46.28 %
Bentley	14	0.04 %	71,685,081 JPY	0.12 %
Lamborghini	4	0.01 %	19,572,302 JPY	0.03 %
Other	12	0.04 %	10,285,410 JPY	0.02 %
Total	32,296	100.00 %	58,349,237,723 JPY	100.00 %

Distribution by New and Used
Distribution by New and Used

New or Used	Number of Loans	Percentage of Loans	Outstanding Discounted Principal Balance	Percentage of Balance
New	21,497	66.56 %	45,193,207,251 JPY	77.45 %
Used	8,628	26.72 %	12,163,763,227 JPY	20.85 %
Used (Prolonged)	2,171	6.72 %	992,267,245 JPY	1.70 %
Total	32,296	100.00 %	58,349,237,723 JPY	100.00 %

Distribution by Brand New and Used

New or Used	Number of Loans	Percentage of Loans	Outstanding Discounted Principal Balance	Percentage of Balance
VW New	14,414	44.63 %	25,695,489,953 JPY	44.04 %
VW Used	4,669	14.46 %	5,052,725,709 JPY	8.66 %
VW Used (Prolonged)	1,591	4.93 %	497,365,189 JPY	0.85 %
Audi New	7,072	21.90 %	19,447,167,373 JPY	33.33 %
Audi Used	3,940	12.20 %	7,060,044,650 JPY	12.10 %
Audi Used (Prolonged)	580	1.80 %	494,902,056 JPY	0.85 %
Other	30	0.09 %	101,542,793 JPY	0.17 %
Total	32,296	100.00 %	58,349,237,723 JPY	100.00 %

Distribution by Product Type

Loan Type List

Loan Type	Description
100	Volkswagen Owner's Plan
100	Audi Owner's Plan
100	Lamborghini Auto Loan
100	Bentley Auto Loan
101	Twin Loan
105	Refinanced Volkswagen Solutions
106	Refinanced Volkswagen Das Welt Auto with refinance option *
106	Refinanced Audi S-Loan/ S-Loan Plus
106	Refinanced Lamborghini Hyper Premium Plan
106	Refinanced Bentley My Flying B
140	Volkswagen Solutions
150	Volkswagen Das Welt Auto with refinance option **
150	Audi S-Loan
150	Lamborghini Hyper Premium Plan
150	Bentley My Flying B
151	Audi S-Loan Plus

(*) The name was changed from "Refinanced Volkswagen GUC with refinance option" effective from 1 February 2012.

No other changes were made to auto loan agreements.

(**) The name was changed from "Volkswagen GUC with refinance option" effective from 1 February 2012.

No other changes were made to auto loan agreements.

Product Type

Loan Type	Number of Loans	Percentage of Loans	Outstanding Discounted Principal Balance	Percentage of Balance
100	4,547	14.08 %	5,456,095,254 JPY	9.35 %
101	0	0.00 %	0 JPY	0.00 %
105	1,537	4.76 %	488,219,537 JPY	0.84 %
106	634	1.96 %	504,047,708 JPY	0.86 %
140-VFJ	2,098	6.50 %	3,703,580,217 JPY	6.35 %
140-Dealer	11,234	34.78 %	20,662,743,393 JPY	35.41 %
150	11,630	36.01 %	25,831,888,634 JPY	44.27 %
151	616	1.91 %	1,702,662,980 JPY	2.92 %
Total	32,296	100.00 %	58,349,237,723 JPY	100.00 %

Credit Type

Credit Type	Number of Loans	Percentage of Loans	Outstanding Discounted Principal Balance	Percentage of Balance
Balloon Type Loan	25,578	79.20 %	51,900,875,224 JPY	88.95 %
Equal Instalment Type Loan	6,718	20.80 %	6,448,362,499 JPY	11.05 %
Total	32,296	100.00 %	58,349,237,723 JPY	100.00 %

Distribution by RV

Loan Type	Number of Loans	Percentage of Balance	Outstanding Discounted Principal Balance
100/101/105/106	6,718	11.05 %	6,448,362,499 JPY
140-VFJ (excl. balloon)		3.39 %	1,978,051,082 JPY
140-VFJ (balloon)		2.96 %	1,725,529,135 JPY
140-VFJ	2,098	6.35 %	3,703,580,217 JPY
140-Dealer (excl. balloon)		18.89 %	11,019,298,329 JPY
140-Dealer (balloon)		16.53 %	9,643,445,064 JPY
140-Dealer	11,234	35.41 %	20,662,743,393 JPY
150 (excl. balloon)		20.21 %	11,790,790,112 JPY
150 (balloon)		24.06 %	14,041,098,522 JPY
150	11,630	44.27 %	25,831,888,634 JPY
151 (excl. balloon)		0.84 %	491,408,441 JPY
151 (balloon)		2.08 %	1,211,254,539 JPY
151	616	2.92 %	1,702,662,980 JPY
Total	32,296	100.00 %	58,349,237,723 JPY

Type of Payment Portion	Percentage of Balance	Outstanding Discounted Principal Balance
Monthly Installment Portion	54.38 %	31,727,910,463 JPY
Balloon Portion	45.62 %	26,621,327,260 JPY
Total	100.00 %	58,349,237,723 JPY

Distribution by Brand New and Used
Audi

New or Used	Number of Loans	Percentage of Loans	Outstanding Discounted Principal Balance	Percentage of Balance
New	7,072	61.01 %	19,447,167,373 JPY	72.02 %
Used	4,520	38.99 %	7,554,946,706 JPY	27.98 %
Total	11,592	100.00 %	27,002,114,079 JPY	100.00 %

Bentley

New or Used	Number of Loans	Percentage of Loans	Outstanding Discounted Principal Balance	Percentage of Balance
New	9	64.29 %	41,838,147 JPY	58.36 %
Used	5	35.71 %	29,846,934 JPY	41.64 %
Total	14	100.00 %	71,685,081 JPY	100.00 %

Lamborghini

New or Used	Number of Loans	Percentage of Loans	Outstanding Discounted Principal Balance	Percentage of Balance
New	2	50.00 %	8,711,778 JPY	44.51 %
Used	2	50.00 %	10,860,524 JPY	55.49 %
Total	4	100.00 %	19,572,302 JPY	100.00 %

VW

New or Used	Number of Loans	Percentage of Loans	Outstanding Discounted Principal Balance	Percentage of Balance
New	14,414	69.72 %	25,695,489,953 JPY	82.24 %
Used	6,260	30.28 %	5,550,090,898 JPY	17.76 %
Total	20,674	100.00 %	31,245,580,851 JPY	100.00 %

OTHER

New or Used	Number of Loans	Percentage of Loans	Outstanding Discounted Principal Balance	Percentage of Balance
New	0	0.00 %	0 JPY	0.00 %
Used	12	100.00 %	10,285,410 JPY	100.00 %
Total	12	100.00 %	10,285,410 JPY	100.00 %

Distribution by Customer Type

Customer Type

Customer Type	Number of Loans	Percentage of Loans	Outstanding Discounted Principal Balance	Percentage of Balance
Retail	29,204	90.43 %	50,276,812,800 JPY	86.17 %
Corporate	3,092	9.57 %	8,072,424,923 JPY	13.83 %
Total	32,296	100.00 %	58,349,237,723 JPY	100.00 %

Distribution by Outstanding Discounted Principal Balance

Outstanding Discounted Principal Balance	Number of Loans	Percentage of Loans	Outstanding Discounted Principal Balance	Percentage of Balance
<= 500,000 JPY	3,160	9.78 %	827,100,348 JPY	1.42 %
500,001 JPY - 1,000,000 JPY	4,706	14.57 %	3,613,484,590 JPY	6.19 %
1,000,001 JPY - 1,500,000 JPY	6,482	20.07 %	8,151,776,355 JPY	13.97 %
1,500,001 JPY - 2,000,000 JPY	6,294	19.49 %	10,957,460,426 JPY	18.78 %
2,000,001 JPY - 2,500,000 JPY	4,783	14.81 %	10,681,310,984 JPY	18.31 %
2,500,001 JPY - 3,000,000 JPY	2,814	8.71 %	7,654,196,309 JPY	13.12 %
3,000,001 JPY - 3,500,000 JPY	1,495	4.63 %	4,823,841,924 JPY	8.27 %
3,500,001 JPY - 4,000,000 JPY	939	2.91 %	3,505,680,952 JPY	6.01 %
4,000,001 JPY - 4,500,000 JPY	644	1.99 %	2,722,440,240 JPY	4.67 %
4,500,001 JPY - 5,000,000 JPY	366	1.13 %	1,728,237,430 JPY	2.96 %
5,000,001 JPY - 6,000,000 JPY	375	1.16 %	2,033,026,265 JPY	3.48 %
6,000,001 JPY - 7,000,000 JPY	145	0.45 %	931,020,072 JPY	1.60 %
7,000,001 JPY - 8,000,000 JPY	68	0.21 %	506,135,937 JPY	0.87 %
8,000,001 JPY - 9,000,000 JPY	21	0.07 %	175,760,979 JPY	0.30 %
9,000,001 JPY - 10,000,000 JPY	4	0.01 %	37,764,912 JPY	0.06 %
>= 10,000,001 JPY	0	0.00 %	0 JPY	0.00 %
Total	32,296	100.00 %	58,349,237,723 JPY	100.00 %

Statistics

Minimum Outstanding Discounted Principal Balance	6,879 JPY
Maximum Outstanding Discounted Principal Balance	9,540,890 JPY
Average Outstanding Discounted Principal Balance	1,806,702 JPY

Distribution by Original Principal Amount

Original Principal Balance	Number of Loans	Percentage of Loans	Outstanding Discounted Principal Balance	Percentage of Balance
<= 500,000 JPY	377	1.17 %	56,964,481 JPY	0.10 %
500,001 JPY - 1,000,000 JPY	2,353	7.29 %	910,780,622 JPY	1.56 %
1,000,001 JPY - 1,500,000 JPY	3,470	10.74 %	2,730,113,934 JPY	4.68 %
1,500,001 JPY - 2,000,000 JPY	5,176	16.03 %	6,030,378,404 JPY	10.33 %
2,000,001 JPY - 2,500,000 JPY	5,377	16.65 %	8,135,792,578 JPY	13.94 %
2,500,001 JPY - 3,000,000 JPY	5,135	15.90 %	9,588,176,252 JPY	16.43 %
3,000,001 JPY - 3,500,000 JPY	3,599	11.14 %	7,999,574,106 JPY	13.71 %
3,500,001 JPY - 4,000,000 JPY	2,354	7.29 %	6,064,772,859 JPY	10.39 %
4,000,001 JPY - 4,500,000 JPY	1,317	4.08 %	3,890,254,920 JPY	6.67 %
4,500,001 JPY - 5,000,000 JPY	985	3.05 %	3,272,222,885 JPY	5.61 %
5,000,001 JPY - 6,000,000 JPY	1,015	3.14 %	3,879,266,542 JPY	6.65 %
6,000,001 JPY - 7,000,000 JPY	561	1.74 %	2,520,806,361 JPY	4.32 %
7,000,001 JPY - 8,000,000 JPY	253	0.78 %	1,289,314,121 JPY	2.21 %
8,000,001 JPY - 9,000,000 JPY	139	0.43 %	806,173,471 JPY	1.38 %
9,000,001 JPY - 10,000,000 JPY	80	0.25 %	526,275,228 JPY	0.90 %
>= 10,000,001 JPY	105	0.33 %	648,370,959 JPY	1.11 %
Total	32,296	100.00 %	58,349,237,723 JPY	100.00 %

Statistics

Minimum Original Principal Balance	90,000 JPY
Maximum Original Principal Balance	25,000,000 JPY
Average Original Principal Balance	2,713,365 JPY

Distribution by Interest Rate paid by the Obligor

Interest Rate paid by the Obligor	Number of Loans	Percentage of Loans	Outstanding Discounted Principal Balance	Percentage of Balance
< 0.900 %	1,267	3.92 %	2,450,854,305 JPY	4.20 %
0.900 % < 1.500 %	5,835	18.07 %	13,161,131,831 JPY	22.56 %
1.500 % < 2.000 %	11,482	35.55 %	22,811,110,340 JPY	39.09 %
2.000 % < 2.500 %	286	0.89 %	519,031,943 JPY	0.89 %
2.500 % < 3.000 %	7,111	22.02 %	12,375,137,582 JPY	21.21 %
3.000 % < 3.500 %	1,192	3.69 %	939,402,843 JPY	1.61 %
3.500 % < 4.000 %	5,088	15.75 %	6,048,503,985 JPY	10.37 %
4.000 % < 4.500 %	35	0.11 %	44,064,894 JPY	0.08 %
4.500 % < 5.000 %	0	0.00 %	0 JPY	0.00 %
5.000 % or more	0	0.00 %	0 JPY	0.00 %
Total	32,296	100.00 %	58,349,237,723 JPY	100.00 %

Statistics	
Minimum Interest Rate	0.00 %
Maximum Interest Rate	4.49 %
Weighted Average Interest Rate	2.07 %

Distribution by Original Term

Length of Original Term (months)	Number of Loans	Percentage of Loans	Outstanding Discounted Principal Balance	Percentage of Balance
6 - 12	35	0.11 %	9,008,356 JPY	0.02 %
13 - 18	53	0.16 %	10,561,141 JPY	0.02 %
19 - 24	1,451	4.49 %	536,255,796 JPY	0.92 %
25 - 30	103	0.32 %	50,737,252 JPY	0.09 %
31 - 36	12,184	37.73 %	23,789,965,482 JPY	40.77 %
37 - 42	83	0.26 %	59,420,739 JPY	0.10 %
43 - 48	1,668	5.16 %	2,081,243,496 JPY	3.57 %
49 - 54	27	0.08 %	33,083,755 JPY	0.06 %
55 - 60	15,787	48.88 %	30,046,233,268 JPY	51.49 %
61 - 66	21	0.07 %	28,285,497 JPY	0.05 %
67 - 72	697	2.16 %	1,233,538,171 JPY	2.11 %
73 - 84	187	0.58 %	470,904,770 JPY	0.81 %
Total	32,296	100.00 %	58,349,237,723 JPY	100.00 %

Statistics	
Minimum Original Term in months	6
Maximum Original Term in months	84
Weighted Average Original Term in months	49.84

Distribution by Remaining Term

Length of Remaining Term (months)	Number of Loans	Percentage of Loans	Outstanding Discounted Principal Balance	Percentage of Balance
<= 12	7,862	24.34 %	9,336,569,064 JPY	16.00 %
13 - 18	4,923	15.24 %	9,131,724,487 JPY	15.65 %
19 - 24	3,594	11.13 %	6,943,798,930 JPY	11.90 %
25 - 30	2,384	7.38 %	4,451,026,990 JPY	7.63 %
31 - 36	3,738	11.57 %	6,900,896,344 JPY	11.83 %
37 - 42	5,333	16.51 %	10,971,149,793 JPY	18.80 %
43 - 48	2,943	9.11 %	6,794,685,857 JPY	11.64 %
49 - 54	1,276	3.95 %	3,180,641,825 JPY	5.45 %
55 - 60	155	0.48 %	386,185,240 JPY	0.66 %
61 - 66	73	0.23 %	200,037,431 JPY	0.34 %
67 - 72	10	0.03 %	34,349,271 JPY	0.06 %
73 - 84	5	0.02 %	18,172,491 JPY	0.03 %
Total	32,296	100.00 %	58,349,237,723 JPY	100.00 %

Statistics	
Minimum Remaining Term in months	1
Maximum Remaining Term in months	78
Weighted Average Remaining Term in months	28.45

Distribution by Seasoning

Seasoning (months)	Number of Loans	Percentage of Loans	Outstanding Discounted Principal Balance	Percentage of Balance
<= 12	2,821	8.73 %	6,577,562,543 JPY	11.27 %
13 - 18	7,230	22.39 %	15,094,018,141 JPY	25.87 %
19 - 24	10,156	31.45 %	19,151,452,912 JPY	32.82 %
25 - 30	6,220	19.26 %	10,685,129,435 JPY	18.31 %
31 - 36	2,945	9.12 %	3,988,008,657 JPY	6.83 %
37 - 42	998	3.09 %	1,155,940,008 JPY	1.98 %
43 - 48	717	2.22 %	716,894,646 JPY	1.23 %
49 - 54	820	2.54 %	746,366,372 JPY	1.28 %
55 - 60	357	1.11 %	218,111,422 JPY	0.37 %
61 - 66	25	0.08 %	13,472,715 JPY	0.02 %
67 - 72	7	0.02 %	2,280,872 JPY	0.00 %
73 - 84	0	0.00 %	0 JPY	0.00 %
Total	32,296	100.00 %	58,349,237,723 JPY	100.00 %

Statistics	
Minimum Seasoning in months	5
Maximum Seasoning in months	71
Weighted Average Seasoning in months	21.39

Distribution by Type of Car

Type of Car

Type of Car	Number of Loans	Percentage of Loans	Outstanding Discounted Principal Balance	Percentage of Balance
New	21,497	66.56 %	45,193,207,251 JPY	77.45 %
Used	10,799	33.44 %	13,156,030,472 JPY	22.55 %
Total	32,296	100.00 %	58,349,237,723 JPY	100.00 %

Type of Car: Only Balloon Loans

Type of Car	Number of Loans	Percentage of Loans	Outstanding Discounted Principal Balance	Percentage of Balance
New	20,130	78.70 %	43,387,177,071 JPY	83.60 %
Used	5,448	21.30 %	8,513,698,153 JPY	16.40 %
Total	25,578	100.00 %	51,900,875,224 JPY	100.00 %

Type of Car: Only Equal Instalment Loans

Type of Car	Number of Loans	Percentage of Loans	Outstanding Discounted Principal Balance	Percentage of Balance
New	1,367	20.35 %	1,806,030,180 JPY	28.01 %
Used	5,351	79.65 %	4,642,332,319 JPY	71.99 %
Total	6,718	100.00 %	6,448,362,499 JPY	100.00 %

Distribution by Brand and Model

Make	Model	Number of Loans	Percentage of Loans	Outstanding Discounted Principal Balance	Percentage of Balance
Audi	A1	1,093	3.38 %	1,445,372,097 JPY	2.48 %
	A3	2,921	9.04 %	5,091,686,252 JPY	8.73 %
	A4	2,417	7.48 %	5,824,914,965 JPY	9.98 %
	A5	535	1.66 %	1,362,682,417 JPY	2.34 %
	A6	713	2.21 %	1,912,896,220 JPY	3.28 %
	A7	286	0.89 %	1,021,121,201 JPY	1.75 %
	A8	83	0.26 %	335,819,848 JPY	0.58 %
	S1	108	0.33 %	234,349,154 JPY	0.40 %
	S3	381	1.18 %	1,039,046,117 JPY	1.78 %
	S4	99	0.31 %	313,132,695 JPY	0.54 %
	S5	67	0.21 %	225,175,309 JPY	0.39 %
	S6	40	0.12 %	183,734,979 JPY	0.31 %
	S7	28	0.09 %	110,827,704 JPY	0.19 %
	S8	19	0.06 %	96,132,212 JPY	0.16 %
	RS3	50	0.15 %	195,315,985 JPY	0.33 %
	RS4	16	0.05 %	54,325,218 JPY	0.09 %
	RS5	16	0.05 %	68,537,567 JPY	0.12 %
	RS6	15	0.05 %	75,587,322 JPY	0.13 %
	RS7	12	0.04 %	66,309,481 JPY	0.11 %
	Q2	60	0.19 %	181,510,661 JPY	0.31 %
	Q3	959	2.97 %	2,079,486,219 JPY	3.56 %
	Q5	601	1.86 %	1,683,783,413 JPY	2.89 %
	Q7	200	0.62 %	968,863,822 JPY	1.66 %
	RSQ3	24	0.07 %	99,704,267 JPY	0.17 %
	TT	837	2.59 %	2,268,637,107 JPY	3.89 %
	R8	12	0.04 %	63,161,847 JPY	0.11 %
	AUDI OTHERS	0	0.00 %	0 JPY	0.00 %
	Subtotal	11,592	35.89 %	27,002,114,079 JPY	46.28 %
Bentley	ARNAGE	0	0.00 %	0 JPY	0.00 %
	AZURE	0	0.00 %	0 JPY	0.00 %
	BENTAYGA	1	0.00 %	7,661,942 JPY	0.01 %
	CONTINENTAL	12	0.04 %	59,682,468 JPY	0.10 %
	FLYING SPUR	0	0.00 %	0 JPY	0.00 %
	MULSANNE	1	0.00 %	4,340,671 JPY	0.01 %
	BENTLEY OTHERS	0	0.00 %	0 JPY	0.00 %
		Subtotal	14	0.04 %	71,685,081 JPY
Lamborghini	AVENTADOR	1	0.00 %	5,579,008 JPY	0.01 %
	DIABLO	0	0.00 %	0 JPY	0.00 %
	GALLARDO	2	0.01 %	11,389,010 JPY	0.02 %
	HURACÁN	1	0.00 %	2,604,284 JPY	0.00 %
	MULCIELAGO	0	0.00 %	0 JPY	0.00 %
	LAMBORGHINI OTHERS	0	0.00 %	0 JPY	0.00 %
		Subtotal	4	0.01 %	19,572,302 JPY
VW	ARTEON	1	0.00 %	4,151,463 JPY	0.01 %
	BEETLE	2,086	6.46 %	3,039,235,958 JPY	5.21 %
	BORA	0	0.00 %	0 JPY	0.00 %
	EOS	0	0.00 %	0 JPY	0.00 %
	GOLF	7,975	24.69 %	12,770,350,471 JPY	21.89 %
	JETTA	10	0.03 %	3,367,074 JPY	0.01 %
	LUPO	1	0.00 %	1,299,779 JPY	0.00 %
	PASSAT	1,781	5.51 %	3,436,434,337 JPY	5.89 %
	POLO	4,376	13.55 %	5,209,334,241 JPY	8.93 %
	SCIROCCO	44	0.14 %	44,602,476 JPY	0.08 %
	SHARAN	712	2.20 %	1,314,286,732 JPY	2.25 %
	TIGUAN	679	2.10 %	1,326,656,067 JPY	2.27 %
	TOUAREG	76	0.24 %	172,989,758 JPY	0.30 %
	TOURAN	1,580	4.89 %	2,861,379,726 JPY	4.90 %
	UP	1,353	4.19 %	1,061,492,769 JPY	1.82 %
	VENTO	0	0.00 %	0 JPY	0.00 %
	VW OTHERS	0	0.00 %	0 JPY	0.00 %
	Subtotal	20,674	64.01 %	31,245,580,851 JPY	53.54 %
Non VW Group Vehicles		12	0.04 %	10,285,410 JPY	0.02 %
	Subtotal	12	0.04 %	10,285,410 JPY	0.02 %
	Total	32,296	100.00 %	58,349,237,723 JPY	100.00 %

Geographic Distribution by Prefecture

Prefecture	Number of Loans	Percentage of Loans	Outstanding Discounted Principal Balance	Percentage of Balance
Tokyo	4,921	15.24 %	10,171,590,320 JPY	17.43 %
Kanagawa	3,174	9.83 %	5,888,622,162 JPY	10.09 %
Aichi	2,341	7.25 %	4,074,804,197 JPY	6.98 %
Saitama	2,154	6.67 %	3,846,565,680 JPY	6.59 %
Osaka	1,915	5.93 %	3,679,020,816 JPY	6.31 %
Chiba	1,463	4.53 %	2,555,093,945 JPY	4.38 %
Fukuoka	1,358	4.20 %	2,500,069,902 JPY	4.28 %
Hokkaido	1,208	3.74 %	2,373,381,916 JPY	4.07 %
Hyogo	1,257	3.89 %	2,218,316,702 JPY	3.80 %
Shizuoka	943	2.92 %	1,683,400,203 JPY	2.89 %
Ibaraki	988	3.06 %	1,679,394,924 JPY	2.88 %
Hiroshima	750	2.32 %	1,236,122,274 JPY	2.12 %
Tochigi	692	2.14 %	1,225,927,132 JPY	2.10 %
Kyoto	634	1.96 %	1,095,047,835 JPY	1.88 %
Gunma	634	1.96 %	997,500,915 JPY	1.71 %
Miyagi	575	1.78 %	986,734,798 JPY	1.69 %
Gifu	500	1.55 %	817,967,524 JPY	1.40 %
Okayama	472	1.46 %	815,254,579 JPY	1.40 %
Nagano	488	1.51 %	802,812,301 JPY	1.38 %
Mie	412	1.28 %	663,953,466 JPY	1.14 %
Fukushima	366	1.13 %	586,091,720 JPY	1.00 %
Niigata	365	1.13 %	556,736,879 JPY	0.95 %
Yamaguchi	325	1.01 %	545,535,403 JPY	0.93 %
Nara	283	0.88 %	496,618,287 JPY	0.85 %
Oita	300	0.93 %	493,154,179 JPY	0.85 %
Yamanashi	237	0.73 %	444,941,378 JPY	0.76 %
Ishikawa	269	0.83 %	433,009,263 JPY	0.74 %
Shiga	259	0.80 %	431,215,655 JPY	0.74 %
Kumamoto	262	0.81 %	413,506,949 JPY	0.71 %
Kagoshima	234	0.72 %	402,634,810 JPY	0.69 %
Wakayama	208	0.64 %	391,475,343 JPY	0.67 %
Toyama	241	0.75 %	391,275,695 JPY	0.67 %
Fukui	208	0.64 %	377,802,677 JPY	0.65 %
Yamagata	227	0.70 %	352,453,078 JPY	0.60 %
Kagawa	182	0.56 %	280,683,034 JPY	0.48 %
Nagasaki	156	0.48 %	276,590,496 JPY	0.47 %
Iwate	153	0.47 %	275,342,791 JPY	0.47 %
Tokushima	151	0.47 %	267,287,600 JPY	0.46 %
Miyazaki	148	0.46 %	255,394,386 JPY	0.44 %
Saga	140	0.43 %	240,163,464 JPY	0.41 %
Ehime	141	0.44 %	212,151,275 JPY	0.36 %
Shimane	112	0.35 %	210,438,287 JPY	0.36 %
Aomori	126	0.39 %	186,524,849 JPY	0.32 %
Akita	104	0.32 %	179,588,135 JPY	0.31 %
Tottori	103	0.32 %	157,899,620 JPY	0.27 %
Kouchi	68	0.21 %	106,346,989 JPY	0.18 %
Okinawa	49	0.15 %	72,793,890 JPY	0.12 %
Total	32,296	100.00 %	58,349,237,723 JPY	100.00 %

Distribution by Obligor Concentration

Distribution of Loan Contracts and Vehicles per Obligor

Contract Concentration	Number of Customers	Percentage of Customers	Number of Loans	Percentage of Loans	Outstanding Discounted Principal Balance	Percentage of Balance
1	31,089	96.79 %	31,089	96.26 %	55,777,370,879 JPY	95.59 %
2	964	3.00 %	1,118	3.46 %	2,362,367,876 JPY	4.05 %
3	54	0.17 %	68	0.21 %	166,676,822 JPY	0.29 %
4	10	0.03 %	18	0.06 %	36,273,608 JPY	0.06 %
5	1	0.00 %	2	0.01 %	4,253,580 JPY	0.01 %
6 - 10	1	0.00 %	1	0.00 %	2,294,958 JPY	0.00 %
11 or more	0	0.00 %	0	0.00 %	0 JPY	0.00 %
Total	32,119	100.00 %	32,296	100.00 %	58,349,237,723 JPY	100.00 %

Top 20 Obligor

Number	Number of Contracts	Outstanding Discounted Principal Balance	Percentage of Balance
1	2	13,986,841 JPY	0.02 %
2	2	13,115,212 JPY	0.02 %
3	2	12,988,374 JPY	0.02 %
4	2	12,580,088 JPY	0.02 %
5	2	11,873,231 JPY	0.02 %
6	2	11,057,401 JPY	0.02 %
7	1	9,540,890 JPY	0.02 %
8	1	9,494,076 JPY	0.02 %
9	2	9,480,875 JPY	0.02 %
10	1	9,399,344 JPY	0.02 %
11	1	9,330,602 JPY	0.02 %
12	2	9,202,901 JPY	0.02 %
13	2	9,194,663 JPY	0.02 %
14	1	8,962,322 JPY	0.02 %
15	1	8,740,491 JPY	0.01 %
16	1	8,725,370 JPY	0.01 %
17	1	8,583,760 JPY	0.01 %
18	1	8,565,719 JPY	0.01 %
19	1	8,494,330 JPY	0.01 %
20	1	8,443,741 JPY	0.01 %
Total 1 -20	29	201,760,231 JPY	0.35 %

Remarks:

Figures above are calculated based on each of the Sub-Servicers respectively and not across both of the Sub-Servicers.

Distribution by Contract Start Month

Origination Month	Number of Loans	Percentage of Loans	Outstanding Discounted Principal Balance	Percentage of Balance
05.2012	1	0.00 %	51,078 JPY	0.00 %
06.2012	1	0.00 %	76,518 JPY	0.00 %
07.2012	1	0.00 %	205,621 JPY	0.00 %
08.2012	1	0.00 %	224,800 JPY	0.00 %
09.2012	3	0.01 %	1,722,855 JPY	0.00 %
10.2012	0	0.00 %	0 JPY	0.00 %
11.2012	1	0.00 %	370,020 JPY	0.00 %
12.2012	6	0.02 %	3,207,331 JPY	0.01 %
01.2013	5	0.02 %	1,197,017 JPY	0.00 %
02.2013	4	0.01 %	2,763,129 JPY	0.00 %
03.2013	9	0.03 %	5,935,218 JPY	0.01 %
04.2013	2	0.01 %	537,593 JPY	0.00 %
05.2013	62	0.19 %	29,905,627 JPY	0.05 %
06.2013	90	0.28 %	53,048,748 JPY	0.09 %
07.2013	66	0.20 %	37,514,593 JPY	0.06 %
08.2013	50	0.15 %	40,250,548 JPY	0.07 %
09.2013	87	0.27 %	56,854,313 JPY	0.10 %
10.2013	74	0.23 %	61,515,546 JPY	0.11 %
11.2013	83	0.26 %	72,122,408 JPY	0.12 %
12.2013	144	0.45 %	129,567,597 JPY	0.22 %
01.2014	93	0.29 %	89,755,374 JPY	0.15 %
02.2014	170	0.53 %	161,364,355 JPY	0.28 %
03.2014	256	0.79 %	232,041,092 JPY	0.40 %
04.2014	70	0.22 %	69,721,957 JPY	0.12 %
05.2014	116	0.36 %	101,552,891 JPY	0.17 %
06.2014	163	0.50 %	153,324,970 JPY	0.26 %
07.2014	117	0.36 %	110,759,688 JPY	0.19 %
08.2014	91	0.28 %	104,735,862 JPY	0.18 %
09.2014	160	0.50 %	176,799,278 JPY	0.30 %
10.2014	108	0.33 %	109,482,277 JPY	0.19 %
11.2014	122	0.38 %	137,587,989 JPY	0.24 %
12.2014	183	0.57 %	227,607,922 JPY	0.39 %
01.2015	127	0.39 %	136,098,852 JPY	0.23 %
02.2015	211	0.65 %	253,457,620 JPY	0.43 %
03.2015	247	0.76 %	291,705,348 JPY	0.50 %
04.2015	109	0.34 %	124,473,003 JPY	0.21 %
05.2015	486	1.50 %	577,545,556 JPY	0.99 %
06.2015	592	1.83 %	789,505,017 JPY	1.35 %
07.2015	480	1.49 %	614,817,067 JPY	1.05 %
08.2015	524	1.62 %	728,839,282 JPY	1.25 %
09.2015	754	2.33 %	1,152,828,732 JPY	1.98 %
10.2015	410	1.27 %	603,519,368 JPY	1.03 %
11.2015	479	1.48 %	771,579,886 JPY	1.32 %
12.2015	1,039	3.22 %	1,672,776,811 JPY	2.87 %
01.2016	924	2.86 %	1,618,365,446 JPY	2.77 %
02.2016	1,319	4.08 %	2,334,357,191 JPY	4.00 %
03.2016	2,049	6.34 %	3,684,530,733 JPY	6.31 %
04.2016	1,026	3.18 %	1,978,902,905 JPY	3.39 %
05.2016	1,500	4.64 %	2,641,494,660 JPY	4.53 %
06.2016	1,778	5.51 %	3,276,402,392 JPY	5.62 %
07.2016	1,596	4.94 %	2,937,475,790 JPY	5.03 %
08.2016	1,812	5.61 %	3,490,592,581 JPY	5.98 %
09.2016	2,444	7.57 %	4,826,584,584 JPY	8.27 %
10.2016	1,587	4.91 %	3,178,888,859 JPY	5.45 %
11.2016	2,191	6.78 %	4,492,848,662 JPY	7.70 %
12.2016	814	2.52 %	1,661,379,999 JPY	2.85 %
01.2017	651	2.02 %	1,419,360,239 JPY	2.43 %
02.2017	794	2.46 %	1,742,305,410 JPY	2.99 %
03.2017	1,193	3.69 %	2,599,234,972 JPY	4.45 %
04.2017	465	1.44 %	1,039,535,507 JPY	1.78 %
05.2017	538	1.67 %	1,238,920,394 JPY	2.12 %
06.2017	596	1.85 %	1,368,739,791 JPY	2.35 %
07.2017	328	1.02 %	719,456,985 JPY	1.23 %
08.2017	307	0.95 %	745,960,035 JPY	1.28 %
09.2017	340	1.05 %	837,941,692 JPY	1.44 %
10.2017	169	0.52 %	414,546,321 JPY	0.71 %
11.2017	78	0.24 %	212,461,818 JPY	0.36 %
12.2017	0	0.00 %	0 JPY	0.00 %
01.2018	0	0.00 %	0 JPY	0.00 %
02.2018	0	0.00 %	0 JPY	0.00 %
03.2018	0	0.00 %	0 JPY	0.00 %
04.2018	0	0.00 %	0 JPY	0.00 %
Total	32,296	100.00 %	58,349,237,723 JPY	100.00 %

Distribution by Contract End Month

Maturity Month	Number of Loans	Percentage of Loans	Outstanding Discounted Principal Balance	Percentage of Balance
05.2018	498	1.54 %	373,899,858 JPY	0.64 %
06.2018	703	2.18 %	625,355,596 JPY	1.07 %
07.2018	551	1.71 %	462,276,399 JPY	0.79 %
08.2018	497	1.54 %	498,400,241 JPY	0.85 %
09.2018	786	2.43 %	826,624,696 JPY	1.42 %
10.2018	436	1.35 %	408,167,569 JPY	0.70 %
11.2018	545	1.69 %	545,843,010 JPY	0.94 %
12.2018	836	2.59 %	1,061,128,929 JPY	1.82 %
01.2019	532	1.65 %	749,283,903 JPY	1.28 %
02.2019	731	2.26 %	1,012,121,099 JPY	1.73 %
03.2019	1,198	3.71 %	1,818,759,705 JPY	3.12 %
04.2019	549	1.70 %	954,708,059 JPY	1.64 %
05.2019	742	2.30 %	1,258,770,376 JPY	2.16 %
06.2019	945	2.93 %	1,720,176,579 JPY	2.95 %
07.2019	703	2.18 %	1,270,953,235 JPY	2.18 %
08.2019	727	2.25 %	1,348,311,680 JPY	2.31 %
09.2019	1,079	3.34 %	2,134,851,224 JPY	3.66 %
10.2019	727	2.25 %	1,398,661,393 JPY	2.40 %
11.2019	958	2.97 %	2,016,366,491 JPY	3.46 %
12.2019	531	1.64 %	1,000,677,654 JPY	1.71 %
01.2020	417	1.29 %	755,412,402 JPY	1.29 %
02.2020	589	1.82 %	1,054,403,692 JPY	1.81 %
03.2020	808	2.50 %	1,522,900,617 JPY	2.61 %
04.2020	291	0.90 %	594,038,074 JPY	1.02 %
05.2020	423	1.31 %	799,736,734 JPY	1.37 %
06.2020	453	1.40 %	876,138,070 JPY	1.50 %
07.2020	329	1.02 %	559,277,277 JPY	0.96 %
08.2020	416	1.29 %	798,620,176 JPY	1.37 %
09.2020	478	1.48 %	901,817,017 JPY	1.55 %
10.2020	285	0.88 %	515,437,716 JPY	0.88 %
11.2020	329	1.02 %	598,402,800 JPY	1.03 %
12.2020	427	1.32 %	738,378,370 JPY	1.27 %
01.2021	524	1.62 %	952,277,506 JPY	1.63 %
02.2021	786	2.43 %	1,485,074,254 JPY	2.55 %
03.2021	1,117	3.46 %	2,067,312,284 JPY	3.54 %
04.2021	555	1.72 %	1,059,451,130 JPY	1.82 %
05.2021	749	2.32 %	1,387,246,630 JPY	2.38 %
06.2021	805	2.49 %	1,626,482,401 JPY	2.79 %
07.2021	819	2.54 %	1,644,112,334 JPY	2.82 %
08.2021	936	2.90 %	1,940,690,702 JPY	3.33 %
09.2021	1,243	3.85 %	2,636,332,890 JPY	4.52 %
10.2021	781	2.42 %	1,736,284,836 JPY	2.98 %
11.2021	1,033	3.20 %	2,370,918,859 JPY	4.06 %
12.2021	364	1.13 %	824,317,316 JPY	1.41 %
01.2022	318	0.98 %	776,900,196 JPY	1.33 %
02.2022	376	1.16 %	892,693,215 JPY	1.53 %
03.2022	592	1.83 %	1,351,200,897 JPY	2.32 %
04.2022	260	0.81 %	578,655,374 JPY	0.99 %
05.2022	294	0.91 %	699,025,268 JPY	1.20 %
06.2022	303	0.94 %	752,191,821 JPY	1.29 %
07.2022	186	0.58 %	459,144,958 JPY	0.79 %
08.2022	199	0.62 %	495,033,145 JPY	0.85 %
09.2022	191	0.59 %	505,694,395 JPY	0.87 %
10.2022	103	0.32 %	269,552,238 JPY	0.46 %
11.2022	62	0.19 %	157,178,449 JPY	0.27 %
12.2022	26	0.08 %	64,623,848 JPY	0.11 %
01.2023	15	0.05 %	37,445,585 JPY	0.06 %
02.2023	20	0.06 %	52,605,049 JPY	0.09 %
03.2023	22	0.07 %	50,506,290 JPY	0.09 %
04.2023	10	0.03 %	23,826,019 JPY	0.04 %
05.2023	19	0.06 %	57,207,182 JPY	0.10 %
06.2023	16	0.05 %	36,744,202 JPY	0.06 %
07.2023	6	0.02 %	16,163,201 JPY	0.03 %
08.2023	8	0.02 %	22,550,538 JPY	0.04 %
09.2023	14	0.04 %	40,412,664 JPY	0.07 %
10.2023	10	0.03 %	26,959,644 JPY	0.05 %
11.2023	3	0.01 %	8,624,800 JPY	0.01 %
12.2023	2	0.01 %	8,961,330 JPY	0.02 %
01.2024	1	0.00 %	2,715,467 JPY	0.00 %
02.2024	2	0.01 %	6,306,900 JPY	0.01 %
03.2024	1	0.00 %	4,489,753 JPY	0.01 %
04.2024	1	0.00 %	3,251,021 JPY	0.01 %
05.2024	0	0.00 %	0 JPY	0.00 %
06.2024	0	0.00 %	0 JPY	0.00 %
07.2024	1	0.00 %	4,202,598 JPY	0.01 %
08.2024	0	0.00 %	0 JPY	0.00 %
09.2024	1	0.00 %	2,782,082 JPY	0.00 %
10.2024	3	0.01 %	11,187,811 JPY	0.02 %
Total	32,296	100.00 %	58,349,237,723 JPY	100.00 %

Distribution by Monthly Payment

Monthly Payment	Number of Loans	Percentage of Loans	Outstanding Discounted Principal Balance	Percentage of Balance
<= 10,000 JPY	1,626	5.03 %	1,861,579,231 JPY	3.19 %
10,001 JPY - 20,000 JPY	6,059	18.76 %	7,562,945,779 JPY	12.96 %
20,001 JPY - 30,000 JPY	8,717	26.99 %	12,680,670,529 JPY	21.73 %
30,001 JPY - 40,000 JPY	6,502	20.13 %	11,600,949,780 JPY	19.88 %
40,001 JPY - 50,000 JPY	3,676	11.38 %	7,680,804,786 JPY	13.16 %
50,001 JPY - 60,000 JPY	2,109	6.53 %	4,980,639,251 JPY	8.54 %
60,001 JPY - 70,000 JPY	1,137	3.52 %	3,057,106,634 JPY	5.24 %
70,001 JPY - 80,000 JPY	652	2.02 %	1,924,798,394 JPY	3.30 %
80,001 JPY - 90,000 JPY	475	1.47 %	1,505,243,413 JPY	2.58 %
90,001 JPY - 100,000 JPY	375	1.16 %	1,296,467,077 JPY	2.22 %
100,001 JPY - 110,000 JPY	251	0.78 %	915,154,606 JPY	1.57 %
110,001 JPY - 120,000 JPY	174	0.54 %	719,748,956 JPY	1.23 %
120,001 JPY - 130,000 JPY	143	0.44 %	616,353,819 JPY	1.06 %
130,001 JPY - 140,000 JPY	87	0.27 %	389,733,983 JPY	0.67 %
140,001 JPY - 150,000 JPY	64	0.20 %	319,274,120 JPY	0.55 %
>= 150,001 JPY	249	0.77 %	1,237,767,365 JPY	2.12 %
Total	32,296	100.00 %	58,349,237,723 JPY	100.00 %

Distribution by Bonus Payment

Bonus Payment	Number of Loans	Percentage of Loans	Outstanding Discounted Principal Balance	Percentage of Balance
No Bonus Payment	19,389	60.04 %	34,244,016,569 JPY	58.69 %
1 JPY - 25,000 JPY	297	0.92 %	387,822,298 JPY	0.66 %
25,001 JPY - 50,000 JPY	3,233	10.01 %	4,791,931,454 JPY	8.21 %
50,001 JPY - 75,000 JPY	1,143	3.54 %	1,876,169,033 JPY	3.22 %
75,001 JPY - 100,000 JPY	4,448	13.77 %	8,132,927,997 JPY	13.94 %
100,001 JPY - 125,000 JPY	557	1.72 %	1,074,211,609 JPY	1.84 %
125,001 JPY - 150,000 JPY	1,729	5.35 %	3,817,529,733 JPY	6.54 %
150,001 JPY - 175,000 JPY	189	0.59 %	419,937,148 JPY	0.72 %
175,001 JPY - 200,000 JPY	804	2.49 %	2,047,437,459 JPY	3.51 %
200,001 JPY - 225,000 JPY	50	0.15 %	121,624,473 JPY	0.21 %
225,001 JPY - 250,000 JPY	206	0.64 %	588,517,557 JPY	1.01 %
250,001 JPY - 275,000 JPY	19	0.06 %	58,858,466 JPY	0.10 %
275,001 JPY - 300,000 JPY	143	0.44 %	459,210,545 JPY	0.79 %
300,001 JPY - 325,000 JPY	8	0.02 %	27,991,734 JPY	0.05 %
325,001 JPY - 350,000 JPY	29	0.09 %	95,157,586 JPY	0.16 %
350,001 JPY - 375,000 JPY	6	0.02 %	23,201,113 JPY	0.04 %
375,001 JPY - 400,000 JPY	20	0.06 %	92,129,792 JPY	0.16 %
400,001 JPY - 425,000 JPY	0	0.00 %	0 JPY	0.00 %
425,001 JPY - 450,000 JPY	7	0.02 %	23,531,585 JPY	0.04 %
450,001 JPY - 475,000 JPY	0	0.00 %	0 JPY	0.00 %
475,001 JPY - 500,000 JPY	15	0.05 %	51,932,146 JPY	0.09 %
500,001 JPY or more	4	0.01 %	15,099,426 JPY	0.03 %
Total	32,296	100.00 %	58,349,237,723 JPY	100.00 %

Distribution by Motor Type

Motor Type	Number of Loans	Percentage of Loans	Outstanding Discounted Principal Balance	Percentage of Balance
EA 189	0	0.00 %	0 JPY	0.00 %
Other	32,296	100.00 %	58,349,237,723 JPY	100.00 %
Total	32,296	100.00 %	58,349,237,723 JPY	100.00 %

Disclaimer

This presentation contains forward-looking statements and information on the business development of the Volkswagen Group. These statements may be spoken or written and can be recognized by terms such as "expects", "anticipates", "intends", "plans", "believes", "seeks", "estimates", "will", or words with similar meaning. These statements are based on assumptions relating to the development of the economies of individual countries, and in particular of the automotive industry, which we have made on the basis of the information available to us and which we consider to be realistic at the time of going to press. The estimates given involve a degree of risk, and the actual developments may differ from those forecast.

Consequently, any unexpected fall in demand or economic stagnation in our key sales markets, such as in Western Europe (and especially Germany) or in the USA, Brazil or China, will have a corresponding impact on the development of our business. The same applies in the event of a significant shift in current exchange rates relative to the US dollar, sterling, yen, Brazilian real, Chinese renminbi and Czech koruna.

If any of these or other risks occur, or if the assumptions underlying any of these statements prove incorrect, the actual results may significantly differ from those expressed or implied by such statements.

We do not update forward-looking statements retrospectively. Such statements are valid on the date of publication and can be superceded.

This information does not constitute an offer to exchange or sell or an offer to exchange or buy any securities.