

Deal Name: Driver Japan six

Originator: Volkswagen Financial Services Japan Ltd.
Gotenyama Trust Tower 17F
7-35 Kitashinagawa 4-chome, Shinagawa-ku
Tokyo 140-0001, Japan

Reporting Entity: Volkswagen Financial Services Japan Ltd.
Treasury Dept.
Gotenyama Trust Tower 17F
7-35 Kitashinagawa 4-chome, Shinagawa-ku
Tokyo 140-0001, Japan
Tel No.: +81(0)3-5792-7261
Fax No.: +81(0)3-3280-7365
E-mail: vwfsjp.abs@vwfs.com

**Trustor of the First Trust:
Servicer:** Volkswagen Financial Services Japan Ltd.

**Trustee of the First Trust:
Trustee of the Second Trust:** Deutsche Trust Company Limited Japan
Sanno Park Tower, 11-1,
Nagatacho 2-chome, Chiyoda-ku,
Tokyo, 100-6172, Japan
Trust Business Administration Department
Tel No.: +81(0)3-5156-5637
Fax No.: +81(0)3-5156-5658
E-mail: DB_Trust_Trust@list.db.com



Contents

Page	Tables of Contents
1	Front Page
2	Contents
3	Deal Overview
4	Deal Overview: Counterparties I
5	Deal Overview: Counterparties II
6	Information regarding the TBI and ABL to the Second Trust
7	Pool Information
8	Available Distribution
9	Waterfall
10	Credit Enhancement
11	Cumulative Gross Loss Ratio & Performance Trigger
12	Cumulative Gross Loss Ratio & Performance Trigger (Chart)
13	Default & Delinquencies
14	Run Out Schedule (Previous)
15	Run Out Schedule
16	Expected Amortization to the Second Trust
17	Sub-Servicer
18	Brand
19	New and Used
20	Product Type
21	RV
22	Brand New and Used
23	Customer Type
24	Outstanding Discounted Principal Balance
25	Original Principal Amount
26	Interest Rate paid by the Obligor
27	Original Term
28	Remaining Term
29	Seasoning
30	Type of Car
31	Brand and Model
32	Geographic Dist. by Prefecture
33	Obligor Concentration
34	Contract Start Month
35	Contract End Month
36	Monthly payment
37	Bonus payment
38	Mortor Type

Deal Overview

Cut Off Date:	2017/02/10		
Trust Commencement Date:	2017/02/23	Legal Maturity of the First Trust:	2025/06/27
Monthly Period:	2018/02/11	to	2018/03/10
Reporting Date:	2018/03/16		
Reporting Frequency:	monthly		
Period No.:	13		
Remittance Date:	2018/03/22		
Advance Payment Date:	2018/03/22		
Cash Adjustment Date:	2018/03/22		
Additional Entrustment Date:	2018/03/26		
Trust Calculation Date:	2018/03/26		
Trust Calculation Period:	2018/02/27	to	2018/03/26
First Trust Payment Date:	2018/03/27		
Second Trust Payment Date:	2018/03/28		
Interest Calculation Period:	2018/03/01	to	2018/03/28
Next Reporting Date:	2018/04/17		

Pool information at the Initial Cut off Date

	Number of Contracts	Outstanding Discounted Principal Balance	Outstanding Nominal Balance
Outstanding Pool	30,757	64,171,706,472 JPY	67,028,993,300 JPY

Credit Type	Percentage of Loans	Outstanding Discounted Principal Balance	Percentage of Balance
Balloon	76.13 %	55,443,642,000 JPY	86.40 %
Equal Instalment Loan	23.87 %	8,728,064,472 JPY	13.60 %
Total	100.00 %	64,171,706,472 JPY	100.00 %

Type of Car	Percentage of Loans	Outstanding Discounted Principal Balance	Percentage of Balance
New	66.66 %	49,506,381,305 JPY	77.15 %
Used	33.34 %	14,665,325,167 JPY	22.85 %
Total	100.00 %	64,171,706,472 JPY	100.00 %

Deal Overview: Counterparties I

Joint Lead Managers:

Shinsei Securities Co., Ltd.

Nihonbashi Muromachi Nomura Building, 4-3,
 Nihonbashi-muromachi 2-chome,
 Chuo-ku,
 Tokyo 103-0022, Japan

BNP Paribas Securities (Japan) Limited

GranTokyo North Tower, 9-1,
 Marunouchi 1-chome,
 Chiyoda-ku,
 Tokyo 100-6740, Japan

Trust Management Account Bank:

The Bank of Tokyo-Mitsubishi UFJ, Ltd.

4-2 Toranomom 1-chome,
 Minato-ku
 Tokyo 105-0001, Japan

Rating								
Moody's			Fitch			R&I		
Long Term	Short Term	Outlook	Long Term	Short Term	Outlook	Long Term	Short Term	Outlook
n.a.	n.a.	n.a.	n.a.	n.a.	n.a.	n.a.	n.a.	n.a.
n.a.	n.a.	n.a.	n.a.	n.a.	n.a.	n.a.	n.a.	n.a.
A1	P-1	Stable	A	F1	Stable	AA-	a-1+	Stable

Originator:

Trustor of the First Trust:

Servicer:

Volkswagen Financial Services Japan Ltd.

Gotenyama Trust Tower 17F
 7-35 Kitashinagawa 4-chome, Shinagawa-ku
 Tokyo 140-0001, Japan

Trustee of the First Trust:

Trustee of the Second Trust:

Deutsche Trust Company Limited Japan

Attn.: Driver Japan Six
 Trust Business Administration Department

ABL Lender to the First Trust:

Trustor of the Second Trust:

Shinsei Securities Co., Ltd.

Seller of the Trust Beneficial

Interest of the Second Trust

Shinsei Securities Co., Ltd.
 BNP Paribas Securities (Japan) Limited

Deal Overview: Counterparties II

Rating Agencies:

Moody's SF Japan K.K.

Attn.: Driver Japan six
 Structure Finance Group Monitoring Division
 5-1 Atago 2-chome, Minato-ku
 Tokyo 105-6220, Japan
 E-mail: monitor.msfx@moodys.com

Fitch Ratings Japan Limited

Attn.: Driver Japan six
 Structured Finance
 Kojimachi Crystal City East Wing 3rd Floor,
 4-8 Kōjimachi, Chiyoda-ku,
 Tokyo 102-0083, Japan
 E-mail: tokyo.surveillance@fitchratings.com

Rating and Investment Information, Inc.

Attn.: Monitoring Group Department:
 Structured Finance Department
 TERRACE SQUARE, 3-22,
 Kanda Nishikicho, Chiyoda-ku,
 Tokyo 101-0054, Japan
 E-mail: sfmonitor@r-i.co.jp

Rating of VW

Volkswagen Financial Services AG

Volkswagen AG

Rating								
Moody's			Fitch			R&I		
Short Term	Long Term	Outlook	Short Term	Long Term	Outlook	Short Term	Long Term	Outlook
P-2	A3	Negative	n.a.	n.a.	n.a.	n.a.	n.a.	n.a.
P-2	A3	Negative	F2	BBB+	Stable	n.a.	n.a.	n.a.

Information regarding Trust Beneficial Interest of the Second Trust & Asset Backed Loan to the Second Trust
Rating Details
Rating at Issue Date

	<u>TBI</u>	<u>ABL</u>
Moody's	Aaa(sf)	Aaa(sf)
Fitch	AAAsf	AAAsf
R&I	AAA	AAA

Current Rating

	<u>TBI</u>	<u>ABL</u>
Moody's	Aaa(sf)	Aaa(sf)
Fitch	AAAsf	AAAsf
R&I	AAA	AAA

Information on TBI & ABL

	<u>TBI</u>	<u>ABL</u>
Initial Balance	39,200,000,000 JPY	20,800,000,000 JPY
Expected Maturity Date	2021/06/28	2021/06/28
Legal Maturity of the Second Trust	2025/06/30	2025/06/30
Payment Dates	28th	28th
Business Day Convention	Modified Following	Modified Following
Listing	None	—

Information on Interest

	<u>TBI</u>	<u>ABL</u>
Fixed/ Floating	Fixed	Fixed
Current Coupon	0.19%	0.19%
Day Count Convention	30/360	30/360

Selling Restriction

The holders of the Beneficial Interest and the ABL Lenders* are prohibited from dividing, assigning, pledging or creating any other security interest over any of the Beneficial Interest and the Asset Backed Loans without the prior written approval of the Trustee of the Second Trust.

(*)The holders of the Beneficial Interest and the ABL Lenders are limited to specified investors (*tokutei toushika*) as defined under Paragraph 31 of Article 2 of the Financial Instruments and Exchange Act (Law no.25 of 1948 as amended).

Clean-Up Call

VWFS Japan as the Trustor of the First Trust has a right at its option to exercise a clean-up call to repurchase of all, but not part, of the outstanding Auto Loan Receivables from the Trustee of the First Trust on any Trust Calculation Date, the Discounted Principal Balance of all outstanding Auto Loan Receivables is expected to be less than ten percent (10%) of the Discounted Principal Balance of the Initial Auto Loan Receivables as of the Initial Cut-off Date after the distribution pursuant to Article 18.1 of the First Trust Agreement on the immediately following First Trust Payment Date.

Pool Information

Pool Balance on Initial Cut-Off Date

Status	Number of Contracts	Outstanding Discounted Principal Balance
Normal	30,757	64,171,706,472 JPY
Cancellation	0	0 JPY
Early Termination	0	0 JPY
Defaulted Receivables	0	0 JPY
Matured	0	0 JPY
Refinance Option	0	0 JPY
Repurchase	0	0 JPY
Total	30,757	64,171,706,472 JPY

Pool Balance before entrustment of Additional Auto Loan Receivables

Status	Number of Contracts on previous EoP	Outstanding Discounted Principal Balance on previous EoP	Number of Contracts "as Collections" during the relevant Monthly Period*	Outstanding Discounted Principal Balance "as Collections" during the relevant Monthly Period*	Number of Contracts EoP before entrustment of Additional Auto Loan Receivables	Outstanding Discounted Principal Balance EoP before entrustment of Additional Auto Loan Receivables
Normal	35,547	65,575,159,985 JPY	34,596	1,144,719,805 JPY	34,596	63,352,345,204 JPY
Cancellation	0	0 JPY	0	0 JPY	0	0 JPY
Early Termination	0	0 JPY	383	643,598,792 JPY	0	0 JPY
Defaulted Receivables	0	0 JPY	5	6,804,613 JPY	0	0 JPY
Matured	0	0 JPY	475	309,083,767 JPY	0	0 JPY
Refinance Option	0	0 JPY	88	118,607,804 JPY	0	0 JPY
Repurchase	0	0 JPY	0	0 JPY	0	0 JPY
Total	35,547	65,575,159,985 JPY	35,547	2,222,814,781 JPY	34,596	63,352,345,204 JPY

Pool Balance after entrustment of Additional Auto Loan Receivables

Status	Number of Contracts EoP before entrustment of Additional Auto Loan Receivables	Outstanding Discounted Principal Balance EoP before entrustment of Additional Auto Loan Receivables	Number of Contracts of Additional Auto Loan Receivables	Outstanding Discounted Principal Balance of Additional Auto Loan Receivables	Number of Contracts EoP after entrustment of Additional Auto Loan Receivables	Outstanding Discounted Principal Balance EoP after entrustment of Additional Auto Loan Receivables
Normal	34,596	63,352,345,204 JPY	0	0 JPY	34,596	63,352,345,204 JPY
Cancellation	0	0 JPY	0	0 JPY	0	0 JPY
Early Termination	0	0 JPY	0	0 JPY	0	0 JPY
Defaulted Receivables	0	0 JPY	0	0 JPY	0	0 JPY
Matured	0	0 JPY	0	0 JPY	0	0 JPY
Refinance Option	0	0 JPY	0	0 JPY	0	0 JPY
Repurchase	0	0 JPY	0	0 JPY	0	0 JPY
Total	34,596	63,352,345,204 JPY	0	0 JPY	34,596	63,352,345,204 JPY

Limits on Eligibility Criteria

Status Limits on Eligibility Criteria (v) (including Additional Entrustment)	Current Exposure in %	Limits in % of the aggregate Discounted Principal Balance of the Auto Loan Receivables outstanding	Status
(i) on Used Purchased Vehicle	22.51 %	35 %	-*
(ii) on Non-VW Vehicles	0.03 %	5 %	-*
(iii) on Balloon Payment	45.21 %	50 %	-*

(*) not applicable since the Revolving Period ended

Outstanding Balances

Monthly Period: from 2018/02/11 to 2018/03/10
Reporting Date: 2018/03/16
Trust Calculation Date: 2018/03/26

Outstanding Balances

	Number of Contracts	Aggregate Amount of the Discounted Principal Balance	Aggregate Amount of the Nominal Balance
Balance on the previous EoP	35,547	65,575,159,985 JPY	68,055,435,100 JPY
Balance after counting on the Collections during the relevant Monthly Period	34,596	63,352,345,204 JPY	65,697,408,200 JPY
Balance of Additional Auto Loan Receivables	0	0 JPY	0 JPY
Aggregate Amount of Auto Loan Receivables	34,596	63,352,345,204 JPY	65,697,408,200 JPY

Collections

	Number of Contracts	Aggregate Amount of the Discounted Principal Balance	Aggregate Amount of the Nominal Balance
Collections: Amortization of current contracts	34,596	1,144,719,805 JPY	1,259,424,600 JPY
Collections: Cancellation	0	0 JPY	0 JPY
Collections: Early Termination	383	643,598,792 JPY	644,631,144 JPY
Collections: Defaulted Receivables	5	6,804,613 JPY	6,822,508 JPY
Collections: Matured	475	309,083,767 JPY	309,534,700 JPY
Collections: Refinance Option	88	118,607,804 JPY	118,770,000 JPY
Collections: Repurchase	0	0 JPY	0 JPY
Sum	35,547	2,222,814,781 JPY	2,339,182,952 JPY

Available Distribution Amount

	Number of Contracts	Aggregate Amount of the Nominal Balance
(a) the Collections for the Monthly Period with respect to such Trust Calculation Date	35,547	2,339,182,952 JPY
(b) drawings from the Cash Collateral Ledger in accordance with Article 18.3 of the First Trust Agreement	0	0 JPY
(c) net investment earnings from Eligible Investments	0	13,221 JPY
(d) net proceeds from the sale or disposal of the Trust Assets of the First Trust	0	0 JPY
(e) any amount which is carried over from the immediately preceding Trust Calculation Date	0	0 JPY
Sum	35,547	2,339,196,173 JPY

Waterfall
There is no distinction between principal and interest, and all collections go through a single priority of payments

		Payment	Remaining Amount
Available Distribution Amount	plus	2,339,196,173 JPY	2,339,196,173 JPY
(a) an amount necessary for the payment of all taxes and public charges to be paid to the relevant public authority by the immediately following First Trust Payment Date.	less	0 JPY	2,339,196,173 JPY
(b) an amount necessary for the payment of all Fees for the Trustee of the First Trust to be paid to the Trustee of the First Trust by the immediately following First Trust Payment Date.	less	590,175 JPY	2,338,605,998 JPY
(c) an amount necessary for the payment of the Servicing Fee to be paid to the Servicer by the immediately following First Trust Payment Date.	less	59,017,643 JPY	2,279,588,355 JPY
(d) an amount necessary for the payment of the Trust Expenses of the First Trust as provided in Article 23.1 (including the Rating Fees, Costs of the Second Trust and those fees not otherwise covered by (b) or (c) above) to be paid to the relevant party by the immediately following First Trust Payment Date (including any amounts advanced by the Trustee of the First Trust pursuant to Article 23.3)	less	605,835 JPY	2,278,982,520 JPY
(e) an amount necessary for the payment of overdue and unpaid interest on the Asset Backed Loans to the First Trust (if any) to be paid to the Trustee of the Second Trust by the immediately following First Trust Payment Date.	less	0 JPY	2,278,982,520 JPY
(f) an amount necessary for the payment to the Trustee of the Second Trust of interest on the Asset Backed Loan to the First Trust accruing during the relevant Interest Calculation Period	less	9,500,000 JPY	2,269,482,520 JPY
(g) an amount necessary to top up the balance thereof until it is equal to the Cash Collateral Ledger Target Balance	less	0 JPY	2,269,482,520 JPY
(h) (i) prior to the expiration of the Revolving Period: an amount necessary for the redemption of any Additional Senior Beneficial Interest;	less	2,269,482,520 JPY	0 JPY
(ii) following the expiration of the Revolving Period and prior to the occurrence of an Early Amortization Event, an amount necessary for the payment to the Trustee of the Second Trust of the Asset Backed Loan Principal Payment Amount for the relevant First Trust Payment Date.			
(iii) following the occurrence of the Early Amortization Event, an amount necessary for the payment to the Trustee of the Second Trust of the remaining principal balance of the Asset Backed Loan to the First Trust.			
(i) an amount necessary for the payment to the Trustee of the First Trust of any Indemnified Amounts which are not compensated by the Trustor of the First Trust	less	0 JPY	0 JPY
(j) an amount necessary for the payment to the Subordinated Beneficiary of the Subordinated Beneficial Principal Payment Amount for the relevant First Trust Payment Date.	less	0 JPY	0 JPY
(k) (i) prior to the expiration of the Revolving Period, then (x) if a transfer is made under (j) above, such remaining amount will be transferred to the Expenses Distribution Ledger for payment to the Subordinated Beneficiary as a payment of earnings on the Subordinated Beneficial Interest, and such payment shall be made on the First Trust Payment Date immediately following such Trust Calculation Date or (y) if no transfer is made under (j) above, such remaining amount will be carried forward to the next Trust Calculation Date.	less	0 JPY	0 JPY
(ii) following the expiration of the Revolving Period and prior to the occurrence of an Early Amortization Event, then such remaining amount will be transferred to the Expenses Distribution Ledger for payment to the Subordinated Beneficiary as a payment of earnings on the Subordinated Beneficial Interest, and such payment shall be made on the First Trust Payment Date immediately following such Trust Calculation Date.			
(iii) following the occurrence of an Early Amortization Event, the remaining amount in the Trust Collection Ledger will be carried forward to the next Trust Calculation Date.			

Credit Enhancement
Subordinated Principal Balance as of the relevant First Trust Payment Date

	Percentage of Aggregate Discounted Principal Balance	Value
(i) the aggregate amount of the Discounted Principal Balance of all Auto Loan Receivables outstanding		63,352,345,204 JPY
(ii) Asset Backed Loan Principal Balance on the relevant First Trust Payment Date		57,730,517,480 JPY
Overcollateralization (= (i) - (ii))	8.87 %	5,621,827,724 JPY
Trust Collection Ledger which is carried over from the immediately preceding Trust Calculation Date	0.00 %	0 JPY
The amount in the Cash Collateral Ledger	0.54 %	345,000,000 JPY
Subordinated Principal Balance	9.42 %	5,966,827,724 JPY

Trust Management Account (TMA)

	in JPY	+/-	in JPY (previous)
Initial Balance on Cash Entrustment Date	345,000,000 JPY		0 JPY
Outstanding Balance on First Trust Payment Date	345,000,000 JPY	0 JPY	345,000,000 JPY
(a) Expenses Distribution Ledger	0 JPY	0 JPY	0 JPY
(b) Trust Collection Ledger	0 JPY	0 JPY	0 JPY
(c) Cash Collateral Ledger	345,000,000 JPY	0 JPY	345,000,000 JPY
Cash Collateral Ledger Target Balance	345,000,000 JPY		

Calculation of Credit Enhancement

Driver Japan six's Credit Enhancement consists of the items listed above in the Subordinated Principal Balance as of the relevant date of determination (immediately following the First Trust Payment Date). The result provides an absolute value, which will be applied to the (amortized) Aggregate Discounted Principal Balance as of the end of the relevant date.

The transaction has a Revolving Period of 12 months until February 2018.

Asset Backed Loan Overcollateralization Percentage is (i) prior to the expiration of the Revolving Period, 8.5%, and (ii) following the expiration of the Revolving Period, 11.5%; provided, in each case no Credit Enhancement Increase Condition shall be in effect. After a Level 1 Credit Enhancement Increase Condition in effect, 17% and after a Level 2 Credit Enhancement Increase Condition is in effect, 100%.

Cumulative Gross Loss & Cumulative Repurchased Receivables

Cumulative Defaulted Receivables

	Number of Contracts	Write Offs
Beginning of Period	35	72,635,239 JPY
Defaulted Receivables	5	6,804,613 JPY
End of Period	40	79,439,852 JPY

Cumulative Gross Loss Ratio

The sum of the Discounted Principal Balance of all Auto Loan Receivables that have become Defaulted Receivables from the Initial Cut-off Date through to the end of Monthly Period immediately preceding the relevant Trust Calculation Date

79,439,852 JPY 0.10 %

The sum of (i) the aggregate Discounted Principal Balance of the Initial Auto Loan Receivables as of the Initial Cut-off Date and (ii) the aggregate Discounted Principal Balance as of the relevant Trust Calculation Date of all Additional Auto Loan Receivables (if any) entrusted on the Additional Entrustment Dates which fall six months prior to the relevant Trust Calculation Date.

78,461,799,186 JPY

Performance Triggers

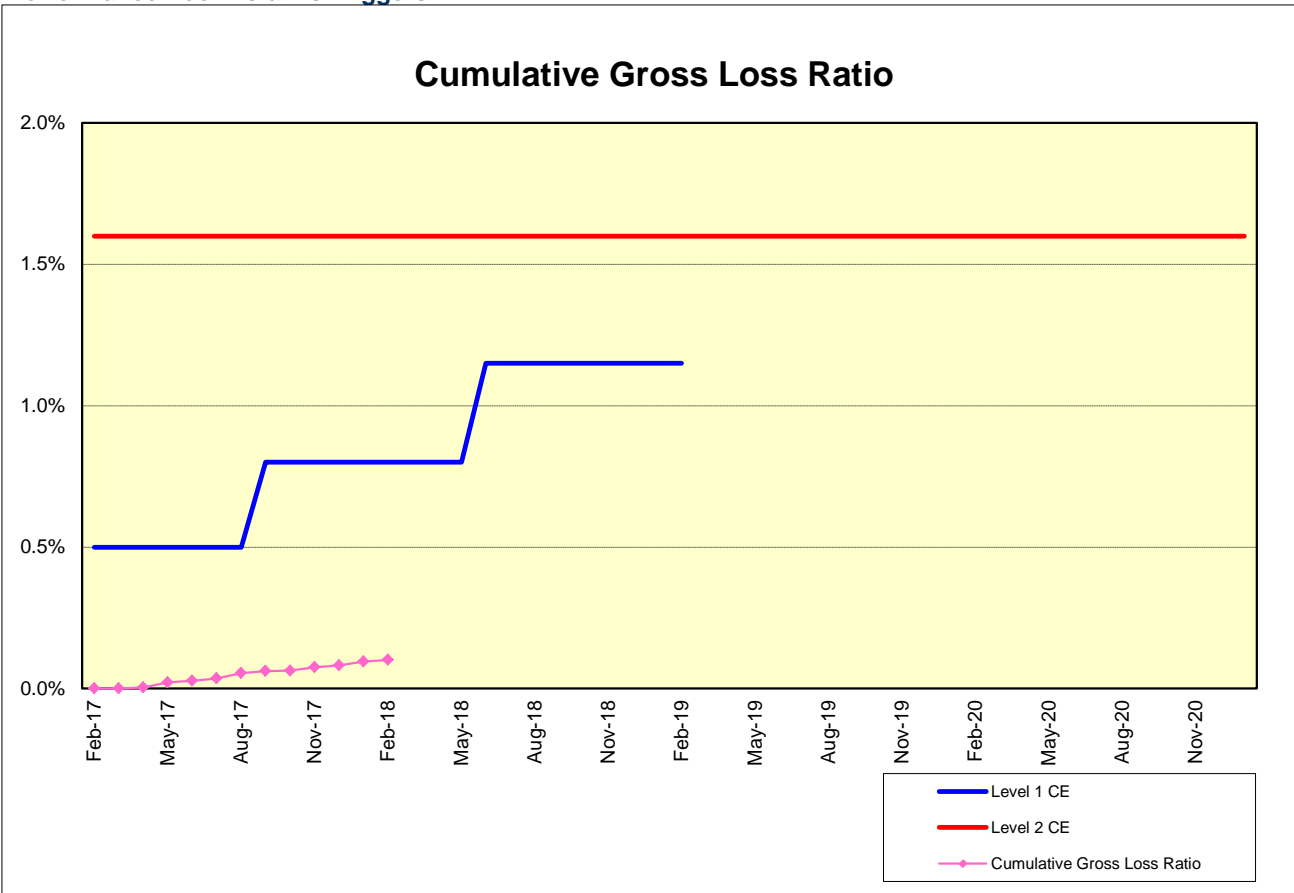
Asset Backed Loan Overcollateralization Percentage was implemented to assure on a monthly basis that no cash is paid to lower steps in the waterfall unless there is sufficient Overcollateralization to support the transaction. The performance trigger in form of a Credit Enhancement Increase Condition will be activated when the Cumulative Gross Loss Ratio exceeds the defined limits. In this case the Overcollateralization will be increased accordingly.

Levels	Credit Enhancement increase condition	Credit Enhancement increase condition in place?
Level 1 (i)	Cumulative Gross Loss Ratio exceeds 0.5% for any First Trust Payment Date on or prior to August 2017	no
Level 1 (ii)	Cumulative Gross Loss Ratio exceeds 0.8% for any First Trust Payment Date from September 2017 to May 2018	no
Level 1 (iii)	Cumulative Gross Loss Ratio exceeds 1.15% for any First Trust Payment Date from June 2018 to February 2019	no
Level 2	Cumulative Gross Loss Ratio exceeds 1.6% for any First Trust Payment Date	no

	Asset Backed Loan Overcollateralization Percentage
Prior to the expiration of the Revolving Period (No Credit Enhancement Increase Condition is in effect)	8.50 %
Following the expiration of Revolving Period (No Credit Enhancement Increase Condition is in effect)	11.50 %
After a Level 1 Credit Enhancement Increase Condition is in effect	17.00 %
After a Level 2 Credit Enhancement Increase Condition is in effect	100.00 %
Current Asset Backed Loan Overcollateralization Percentage	8.87 %

Cumulative Gross Loss & Cumulative Repurchased Receivables

Performance Pool vis-a-vis Triggers



Cumulative Repurchased Receivables

	Number of Contracts	Repurchase Price
Beginning of Period	0	0 JPY
Repurchased Receivables	0	0 JPY
End of Period	0	0 JPY

Defaulted and Delinquent Contracts

Information of Delinquencies and Defaults

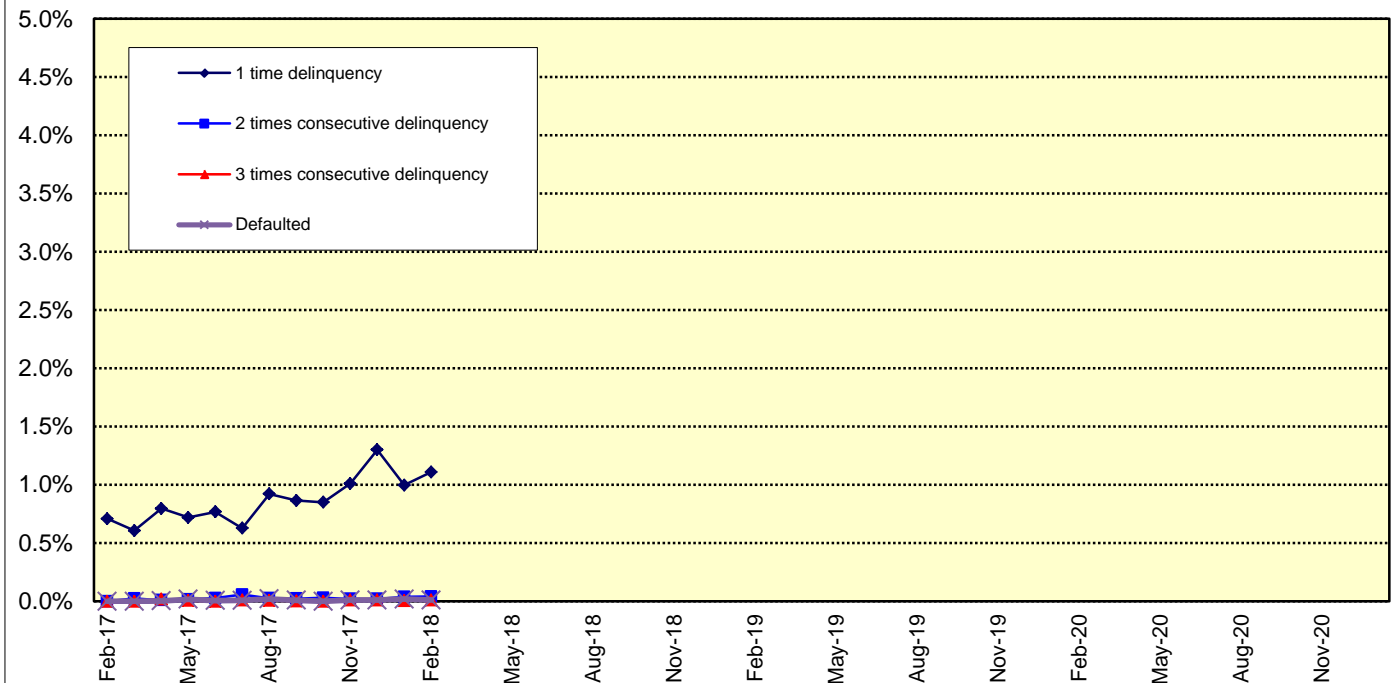
Current Reporting Period	Number of Contracts	Percentage of Contracts (*)	Outstanding Discounted Principal Balance	Percentage of Principal Balance (*)	Outstanding Nominal Balance	Percentage of Nominal Balance (*)
Delinquent	375	1.05 %	731,895,452 JPY	1.12 %	762,235,100 JPY	1.12 %
Default	5	0.01 %	6,804,613 JPY	0.01 %	6,822,508 JPY	0.01 %

(*) Based on the previous EoP

Delinquency Profile (Information Purpose Only)

Days in Arrears	Number of Contracts	Percentage of Contracts	Outstanding Discounted Principal Balance	Percentage of Principal Balance	Outstanding Nominal Balance	Percentage of Nominal Balance
1	359	1.04 %	702,027,247 JPY	1.11 %	731,208,300 JPY	1.11 %
2	14	0.04 %	24,705,281 JPY	0.04 %	25,614,600 JPY	0.04 %
3	2	0.01 %	5,162,924 JPY	0.01 %	5,412,200 JPY	0.01 %
Total	375	1.08 %	731,895,452 JPY	1.16 %	762,235,100 JPY	1.16 %

Delinquent / Defaulted (Gross Loss) Ratio

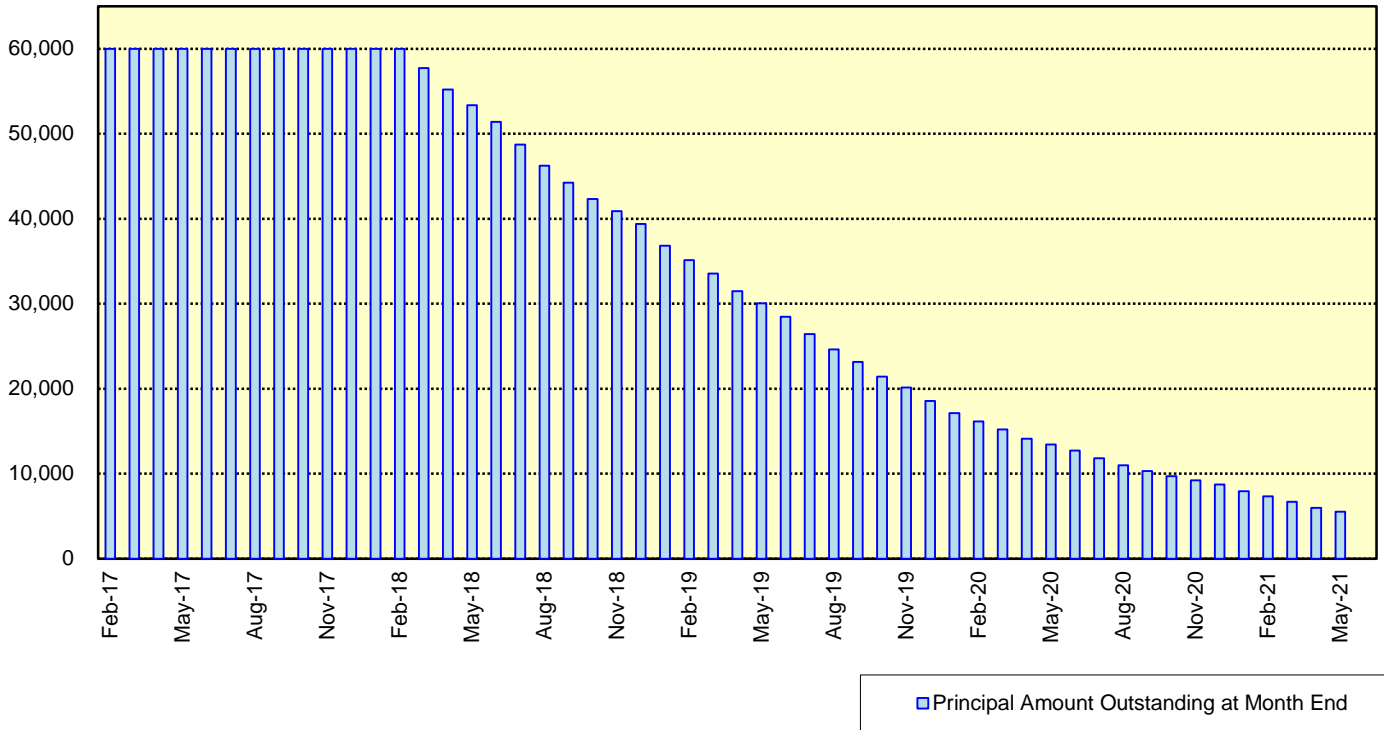


Expected Amortisation

Expected Amortization to the Second Trust

JPY mil.

Assuming a Clean-Up Call at 10% of the Initial Outstanding Balance, annual prepayments of 10% and 0% defaults.



Distribution by Sub-Servicer

Sub-Servicer	Number of Loans	Percentage of Loans	Outstanding Principal Balance	Percentage of Balance
Cedyna	20,377	58.90 %	38,147,649,686 JPY	60.22 %
Jaccs	14,219	41.10 %	25,204,695,518 JPY	39.78 %
Total	34,596	100.00 %	63,352,345,204 JPY	100.00 %

Distribution by Brand

Make	Number of Loans	Percentage of Loans	Outstanding Discounted Principal Balance	Percentage of Balance
VW	22,128	63.96 %	33,682,362,744 JPY	53.17 %
Audi	12,432	35.93 %	29,543,311,734 JPY	46.63 %
Bentley	17	0.05 %	87,892,901 JPY	0.14 %
Lamborghini	4	0.01 %	22,154,850 JPY	0.03 %
Other	15	0.04 %	16,622,975 JPY	0.03 %
Total	34,596	100.00 %	63,352,345,204 JPY	100.00 %

Distribution by New and Used
Distribution by New and Used

New or Used	Number of Loans	Percentage of Loans	Outstanding Discounted Principal Balance	Percentage of Balance
New	23,027	66.56 %	49,092,407,611 JPY	77.49 %
Used	9,033	26.11 %	13,078,709,223 JPY	20.64 %
Used (Prolonged)	2,536	7.33 %	1,181,228,370 JPY	1.86 %
Total	34,596	100.00 %	63,352,345,204 JPY	100.00 %

Distribution by Brand New and Used

New or Used	Number of Loans	Percentage of Loans	Outstanding Discounted Principal Balance	Percentage of Balance
VW New	15,357	44.39 %	27,678,668,693 JPY	43.69 %
VW Used	4,879	14.10 %	5,397,309,843 JPY	8.52 %
VW Used (Prolonged)	1,892	5.47 %	606,384,208 JPY	0.96 %
Audi New	7,657	22.13 %	21,348,657,475 JPY	33.70 %
Audi Used	4,131	11.94 %	7,619,810,097 JPY	12.03 %
Audi Used (Prolonged)	644	1.86 %	574,844,162 JPY	0.91 %
Other	36	0.10 %	126,670,726 JPY	0.20 %
Total	34,596	100.00 %	63,352,345,204 JPY	100.00 %

Distribution by Product Type

Loan Type List

Loan Type	Description
100	Volkswagen Owner's Plan
100	Audi Owner's Plan
100	Lamborghini Auto Loan
100	Bentley Auto Loan
101	Twin Loan
105	Refinanced Volkswagen Solutions
106	Refinanced Volkswagen Das Welt Auto with refinance option *
106	Refinanced Audi S-Loan/ S-Loan Plus
106	Refinanced Lamborghini Hyper Premium Plan
106	Refinanced Bentley My Flying B
140	Volkswagen Solutions
150	Volkswagen Das Welt Auto with refinance option **
150	Audi S-Loan
150	Lamborghini Hyper Premium Plan
150	Bentley My Flying B
151	Audi S-Loan Plus

(*) The name was changed from "Refinanced Volkswagen GUC with refinance option" effective from 1 February 2012.

No other changes were made to auto loan agreements.

(**) The name was changed from "Volkswagen GUC with refinance option" effective from 1 February 2012.

No other changes were made to auto loan agreements.

Product Type

Loan Type	Number of Loans	Percentage of Loans	Outstanding Discounted Principal Balance	Percentage of Balance
100	4,828	13.96 %	5,960,239,342 JPY	9.41 %
101	0	0.00 %	0 JPY	0.00 %
105	1,824	5.27 %	593,245,337 JPY	0.94 %
106	712	2.06 %	587,983,033 JPY	0.93 %
140-VFJ	2,262	6.54 %	4,017,130,029 JPY	6.34 %
140-Dealer	11,943	34.52 %	22,215,537,020 JPY	35.07 %
150	12,347	35.69 %	28,073,050,719 JPY	44.31 %
151	680	1.97 %	1,905,159,724 JPY	3.01 %
Total	34,596	100.00 %	63,352,345,204 JPY	100.00 %

Credit Type

Credit Type	Number of Loans	Percentage of Loans	Outstanding Discounted Principal Balance	Percentage of Balance
Balloon Type Loan	27,232	78.71 %	56,210,877,492 JPY	88.73 %
Equal Instalment Type Loan	7,364	21.29 %	7,141,467,712 JPY	11.27 %
Total	34,596	100.00 %	63,352,345,204 JPY	100.00 %

Distribution by RV

Loan Type	Number of Loans	Percentage of Balance	Outstanding Discounted Principal Balance
100/101/105/106	7,364	11.27 %	7,141,467,712 JPY
140-VFJ (excl. balloon)		3.36 %	2,131,415,832 JPY
140-VFJ (balloon)		2.98 %	1,885,714,197 JPY
140-VFJ	2,262	6.34 %	4,017,130,029 JPY
140-Dealer (excl. balloon)		18.69 %	11,837,870,875 JPY
140-Dealer (balloon)		16.38 %	10,377,666,145 JPY
140-Dealer	11,943	35.07 %	22,215,537,020 JPY
150 (excl. balloon)		20.55 %	13,019,916,011 JPY
150 (balloon)		23.76 %	15,053,134,708 JPY
150	12,347	44.31 %	28,073,050,719 JPY
151 (excl. balloon)		0.91 %	578,903,016 JPY
151 (balloon)		2.09 %	1,326,256,708 JPY
151	680	3.01 %	1,905,159,724 JPY
Total	34,596	100.00 %	63,352,345,204 JPY

Type of Payment Portion	Percentage of Balance	Outstanding Discounted Principal Balance
Monthly Installment Portion	54.79 %	34,709,573,446 JPY
Balloon Portion	45.21 %	28,642,771,758 JPY
Total	100.00 %	63,352,345,204 JPY

Distribution by Brand New and Used
Audi

New or Used	Number of Loans	Percentage of Loans	Outstanding Discounted Principal Balance	Percentage of Balance
New	7,657	61.59 %	21,348,657,475 JPY	72.26 %
Used	4,775	38.41 %	8,194,654,259 JPY	27.74 %
Total	12,432	100.00 %	29,543,311,734 JPY	100.00 %

Bentley

New or Used	Number of Loans	Percentage of Loans	Outstanding Discounted Principal Balance	Percentage of Balance
New	11	64.71 %	55,049,732 JPY	62.63 %
Used	6	35.29 %	32,843,169 JPY	37.37 %
Total	17	100.00 %	87,892,901 JPY	100.00 %

Lamborghini

New or Used	Number of Loans	Percentage of Loans	Outstanding Discounted Principal Balance	Percentage of Balance
New	2	50.00 %	10,031,711 JPY	45.28 %
Used	2	50.00 %	12,123,139 JPY	54.72 %
Total	4	100.00 %	22,154,850 JPY	100.00 %

VW

New or Used	Number of Loans	Percentage of Loans	Outstanding Discounted Principal Balance	Percentage of Balance
New	15,357	69.40 %	27,678,668,693 JPY	82.18 %
Used	6,771	30.60 %	6,003,694,051 JPY	17.82 %
Total	22,128	100.00 %	33,682,362,744 JPY	100.00 %

OTHER

New or Used	Number of Loans	Percentage of Loans	Outstanding Discounted Principal Balance	Percentage of Balance
New	0	0.00 %	0 JPY	0.00 %
Used	15	100.00 %	16,622,975 JPY	100.00 %
Total	15	100.00 %	16,622,975 JPY	100.00 %

Distribution by Customer Type

Customer Type

Customer Type	Number of Loans	Percentage of Loans	Outstanding Discounted Principal Balance	Percentage of Balance
Retail	31,305	90.49 %	54,531,449,140 JPY	86.08 %
Corporate	3,291	9.51 %	8,820,896,064 JPY	13.92 %
Total	34,596	100.00 %	63,352,345,204 JPY	100.00 %

Distribution by Outstanding Discounted Principal Balance

Outstanding Discounted Principal Balance	Number of Loans	Percentage of Loans	Outstanding Discounted Principal Balance	Percentage of Balance
<= 500,000 JPY	3,442	9.95 %	870,962,691 JPY	1.37 %
500,001 JPY - 1,000,000 JPY	4,869	14.07 %	3,736,863,295 JPY	5.90 %
1,000,001 JPY - 1,500,000 JPY	6,890	19.92 %	8,648,993,659 JPY	13.65 %
1,500,001 JPY - 2,000,000 JPY	6,590	19.05 %	11,467,258,511 JPY	18.10 %
2,000,001 JPY - 2,500,000 JPY	5,124	14.81 %	11,456,425,015 JPY	18.08 %
2,500,001 JPY - 3,000,000 JPY	3,102	8.97 %	8,451,522,961 JPY	13.34 %
3,000,001 JPY - 3,500,000 JPY	1,697	4.91 %	5,476,542,183 JPY	8.64 %
3,500,001 JPY - 4,000,000 JPY	1,018	2.94 %	3,805,641,984 JPY	6.01 %
4,000,001 JPY - 4,500,000 JPY	711	2.06 %	3,011,518,049 JPY	4.75 %
4,500,001 JPY - 5,000,000 JPY	436	1.26 %	2,061,118,707 JPY	3.25 %
5,000,001 JPY - 6,000,000 JPY	419	1.21 %	2,282,056,674 JPY	3.60 %
6,000,001 JPY - 7,000,000 JPY	183	0.53 %	1,179,455,293 JPY	1.86 %
7,000,001 JPY - 8,000,000 JPY	74	0.21 %	551,665,965 JPY	0.87 %
8,000,001 JPY - 9,000,000 JPY	34	0.10 %	286,332,908 JPY	0.45 %
9,000,001 JPY - 10,000,000 JPY	7	0.02 %	65,987,309 JPY	0.10 %
>= 10,000,001 JPY	0	0.00 %	0 JPY	0.00 %
Total	34,596	100.00 %	63,352,345,204 JPY	100.00 %

Statistics

Minimum Outstanding Discounted Principal Balance	5,487 JPY
Maximum Outstanding Discounted Principal Balance	9,768,113 JPY
Average Outstanding Discounted Principal Balance	1,831,204 JPY

Distribution by Original Principal Amount

Original Principal Balance	Number of Loans	Percentage of Loans	Outstanding Discounted Principal Balance	Percentage of Balance
<= 500,000 JPY	453	1.31 %	71,679,424 JPY	0.11 %
500,001 JPY - 1,000,000 JPY	2,659	7.69 %	1,041,559,274 JPY	1.64 %
1,000,001 JPY - 1,500,000 JPY	3,749	10.84 %	3,018,036,181 JPY	4.76 %
1,500,001 JPY - 2,000,000 JPY	5,512	15.93 %	6,548,102,095 JPY	10.34 %
2,000,001 JPY - 2,500,000 JPY	5,702	16.48 %	8,786,670,549 JPY	13.87 %
2,500,001 JPY - 3,000,000 JPY	5,441	15.73 %	10,336,089,003 JPY	16.32 %
3,000,001 JPY - 3,500,000 JPY	3,801	10.99 %	8,601,570,308 JPY	13.58 %
3,500,001 JPY - 4,000,000 JPY	2,512	7.26 %	6,584,143,350 JPY	10.39 %
4,000,001 JPY - 4,500,000 JPY	1,406	4.06 %	4,239,132,521 JPY	6.69 %
4,500,001 JPY - 5,000,000 JPY	1,051	3.04 %	3,544,607,908 JPY	5.60 %
5,000,001 JPY - 6,000,000 JPY	1,093	3.16 %	4,236,158,292 JPY	6.69 %
6,000,001 JPY - 7,000,000 JPY	609	1.76 %	2,777,063,009 JPY	4.38 %
7,000,001 JPY - 8,000,000 JPY	266	0.77 %	1,402,442,460 JPY	2.21 %
8,000,001 JPY - 9,000,000 JPY	148	0.43 %	874,413,676 JPY	1.38 %
9,000,001 JPY - 10,000,000 JPY	82	0.24 %	563,306,757 JPY	0.89 %
>= 10,000,001 JPY	112	0.32 %	727,370,397 JPY	1.15 %
Total	34,596	100.00 %	63,352,345,204 JPY	100.00 %

Statistics

Minimum Original Principal Balance	90,000 JPY
Maximum Original Principal Balance	25,000,000 JPY
Average Original Principal Balance	2,700,758 JPY

Distribution by Interest Rate paid by the Obligor

Interest Rate paid by the Obligor	Number of Loans	Percentage of Loans	Outstanding Discounted Principal Balance	Percentage of Balance
< 0.900 %	1,649	4.77 %	3,054,538,212 JPY	4.82 %
0.900 % < 1.500 %	6,310	18.24 %	14,423,970,942 JPY	22.77 %
1.500 % < 2.000 %	11,966	34.59 %	24,350,504,170 JPY	38.44 %
2.000 % < 2.500 %	310	0.90 %	564,576,351 JPY	0.89 %
2.500 % < 3.000 %	7,425	21.46 %	13,214,325,088 JPY	20.86 %
3.000 % < 3.500 %	1,260	3.64 %	1,014,900,119 JPY	1.60 %
3.500 % < 4.000 %	5,638	16.30 %	6,675,525,194 JPY	10.54 %
4.000 % < 4.500 %	38	0.11 %	54,005,128 JPY	0.09 %
4.500 % < 5.000 %	0	0.00 %	0 JPY	0.00 %
5.000 % or more	0	0.00 %	0 JPY	0.00 %
Total	34,596	100.00 %	63,352,345,204 JPY	100.00 %

Statistics	
Minimum Interest Rate	0.00 %
Maximum Interest Rate	4.49 %
Weighted Average Interest Rate	2.06 %

Distribution by Original Term

Length of Original Term (months)	Number of Loans	Percentage of Loans	Outstanding Discounted Principal Balance	Percentage of Balance
6 - 12	51	0.15 %	15,025,469 JPY	0.02 %
13 - 18	95	0.27 %	16,838,291 JPY	0.03 %
19 - 24	1,776	5.13 %	697,477,788 JPY	1.10 %
25 - 30	108	0.31 %	59,160,548 JPY	0.09 %
31 - 36	13,528	39.10 %	26,654,060,563 JPY	42.07 %
37 - 42	85	0.25 %	66,253,883 JPY	0.10 %
43 - 48	1,752	5.06 %	2,257,083,199 JPY	3.56 %
49 - 54	31	0.09 %	36,125,048 JPY	0.06 %
55 - 60	16,238	46.94 %	31,703,118,490 JPY	50.04 %
61 - 66	21	0.06 %	29,606,538 JPY	0.05 %
67 - 72	719	2.08 %	1,318,416,416 JPY	2.08 %
73 - 84	192	0.55 %	499,178,971 JPY	0.79 %
Total	34,596	100.00 %	63,352,345,204 JPY	100.00 %

Statistics	
Minimum Original Term in months	6
Maximum Original Term in months	84
Weighted Average Original Term in months	49.45

Distribution by Remaining Term

Length of Remaining Term (months)	Number of Loans	Percentage of Loans	Outstanding Discounted Principal Balance	Percentage of Balance
<= 12	7,836	22.65 %	8,631,734,062 JPY	13.62 %
13 - 18	5,005	14.47 %	9,014,333,926 JPY	14.23 %
19 - 24	4,404	12.73 %	8,885,732,362 JPY	14.03 %
25 - 30	2,812	8.13 %	5,519,808,170 JPY	8.71 %
31 - 36	2,913	8.42 %	5,533,877,567 JPY	8.74 %
37 - 42	5,054	14.61 %	10,172,373,269 JPY	16.06 %
43 - 48	4,172	12.06 %	9,622,787,848 JPY	15.19 %
49 - 54	1,856	5.36 %	4,500,246,845 JPY	7.10 %
55 - 60	421	1.22 %	1,120,032,548 JPY	1.77 %
61 - 66	84	0.24 %	228,970,294 JPY	0.36 %
67 - 72	32	0.09 %	96,127,079 JPY	0.15 %
73 - 84	7	0.02 %	26,321,234 JPY	0.04 %
Total	34,596	100.00 %	63,352,345,204 JPY	100.00 %

Statistics	
Minimum Remaining Term in months	1
Maximum Remaining Term in months	80
Weighted Average Remaining Term in months	29.58

Distribution by Seasoning

Seasoning (months)	Number of Loans	Percentage of Loans	Outstanding Discounted Principal Balance	Percentage of Balance
<= 12	4,894	14.15 %	11,411,919,772 JPY	18.01 %
13 - 18	9,716	28.08 %	20,059,336,676 JPY	31.66 %
19 - 24	9,786	28.29 %	18,001,917,320 JPY	28.42 %
25 - 30	4,299	12.43 %	7,120,807,678 JPY	11.24 %
31 - 36	3,188	9.21 %	4,108,947,001 JPY	6.49 %
37 - 42	815	2.36 %	973,255,958 JPY	1.54 %
43 - 48	964	2.79 %	945,930,055 JPY	1.49 %
49 - 54	551	1.59 %	510,976,820 JPY	0.81 %
55 - 60	358	1.03 %	210,566,239 JPY	0.33 %
61 - 66	16	0.05 %	7,598,076 JPY	0.01 %
67 - 72	9	0.03 %	1,089,609 JPY	0.00 %
73 - 84	0	0.00 %	0 JPY	0.00 %
Total	34,596	100.00 %	63,352,345,204 JPY	100.00 %

Statistics	
Minimum Seasoning in months	3
Maximum Seasoning in months	71
Weighted Average Seasoning in months	19.87

Distribution by Type of Car
Type of Car

Type of Car	Number of Loans	Percentage of Loans	Outstanding Discounted Principal Balance	Percentage of Balance
New	23,027	66.56 %	49,092,407,611 JPY	77.49 %
Used	11,569	33.44 %	14,259,937,593 JPY	22.51 %
Total	34,596	100.00 %	63,352,345,204 JPY	100.00 %

Type of Car: Only Balloon Loans

Type of Car	Number of Loans	Percentage of Loans	Outstanding Discounted Principal Balance	Percentage of Balance
New	21,569	79.20 %	47,102,047,070 JPY	83.80 %
Used	5,663	20.80 %	9,108,830,422 JPY	16.20 %
Total	27,232	100.00 %	56,210,877,492 JPY	100.00 %

Type of Car: Only Equal Instalment Loans

Type of Car	Number of Loans	Percentage of Loans	Outstanding Discounted Principal Balance	Percentage of Balance
New	1,458	19.80 %	1,990,360,541 JPY	27.87 %
Used	5,906	80.20 %	5,151,107,171 JPY	72.13 %
Total	7,364	100.00 %	7,141,467,712 JPY	100.00 %

Distribution by Brand and Model

Make	Model	Number of Loans	Percentage of Loans	Outstanding Discounted Principal Balance	Percentage of Balance
Audi	A1	1,193	3.45 %	1,604,064,085 JPY	2.53 %
	A3	3,118	9.01 %	5,572,344,042 JPY	8.80 %
	A4	2,566	7.42 %	6,294,940,768 JPY	9.94 %
	A5	570	1.65 %	1,484,046,562 JPY	2.34 %
	A6	784	2.27 %	2,150,097,723 JPY	3.39 %
	A7	312	0.90 %	1,153,668,232 JPY	1.82 %
	A8	90	0.26 %	370,562,219 JPY	0.58 %
	S1	117	0.34 %	256,640,044 JPY	0.41 %
	S3	414	1.20 %	1,140,249,688 JPY	1.80 %
	S4	104	0.30 %	335,534,799 JPY	0.53 %
	S5	69	0.20 %	238,995,334 JPY	0.38 %
	S6	42	0.12 %	202,969,904 JPY	0.32 %
	S7	30	0.09 %	123,925,743 JPY	0.20 %
	S8	19	0.05 %	101,442,620 JPY	0.16 %
	RS3	52	0.15 %	207,737,824 JPY	0.33 %
	RS4	17	0.05 %	60,000,010 JPY	0.09 %
	RS5	17	0.05 %	71,971,861 JPY	0.11 %
	RS6	15	0.04 %	80,152,789 JPY	0.13 %
	RS7	12	0.03 %	69,633,641 JPY	0.11 %
	Q2	62	0.18 %	195,198,679 JPY	0.31 %
	Q3	1,042	3.01 %	2,296,916,865 JPY	3.63 %
	Q5	655	1.89 %	1,886,130,419 JPY	2.98 %
	Q7	206	0.60 %	1,030,120,097 JPY	1.63 %
	RSQ3	25	0.07 %	106,385,953 JPY	0.17 %
	TT	889	2.57 %	2,443,073,694 JPY	3.86 %
	R8	12	0.03 %	66,508,139 JPY	0.10 %
AUDI OTHERS	0	0.00 %	0 JPY	0.00 %	
	Subtotal	12,432	35.93 %	29,543,311,734 JPY	46.63 %
Bentley	ARNAGE	0	0.00 %	0 JPY	0.00 %
	AZURE	0	0.00 %	0 JPY	0.00 %
	BENTAYGA	1	0.00 %	7,940,530 JPY	0.01 %
	CONTINENTAL	14	0.04 %	71,755,091 JPY	0.11 %
	FLYING SPUR	1	0.00 %	2,996,995 JPY	0.00 %
	MULSANNE	1	0.00 %	5,200,285 JPY	0.01 %
	BENTLEY OTHERS	0	0.00 %	0 JPY	0.00 %
		Subtotal	17	0.05 %	87,892,901 JPY
Lamborghini	AVENTADOR	1	0.00 %	6,263,608 JPY	0.01 %
	DIABLO	0	0.00 %	0 JPY	0.00 %
	GALLARDO	2	0.01 %	12,549,714 JPY	0.02 %
	HURACÁN	1	0.00 %	3,341,528 JPY	0.01 %
	MULCIELAGO	0	0.00 %	0 JPY	0.00 %
	LAMBORGHINI OTHERS	0	0.00 %	0 JPY	0.00 %
		Subtotal	4	0.01 %	22,154,850 JPY
VW	ARTEON	1	0.00 %	4,252,082 JPY	0.01 %
	BEETLE	2,233	6.45 %	3,289,023,988 JPY	5.19 %
	BORA	0	0.00 %	0 JPY	0.00 %
	EOS	0	0.00 %	0 JPY	0.00 %
	GOLF	8,644	24.99 %	13,841,482,252 JPY	21.85 %
	JETTA	12	0.03 %	3,758,171 JPY	0.01 %
	LUPO	1	0.00 %	1,339,708 JPY	0.00 %
	PASSAT	1,875	5.42 %	3,707,781,909 JPY	5.85 %
	POLO	4,647	13.43 %	5,591,656,692 JPY	8.83 %
	SCIROCCO	48	0.14 %	48,428,788 JPY	0.08 %
	SHARAN	750	2.17 %	1,404,438,897 JPY	2.22 %
	TIGUAN	716	2.07 %	1,401,461,098 JPY	2.21 %
	TOUAREG	86	0.25 %	195,371,479 JPY	0.31 %
	TOURAN	1,638	4.73 %	3,017,002,723 JPY	4.76 %
	UP	1,477	4.27 %	1,176,364,957 JPY	1.86 %
	VENTO	0	0.00 %	0 JPY	0.00 %
	VW OTHERS	0	0.00 %	0 JPY	0.00 %
	Subtotal	22,127	63.96 %	33,678,110,662 JPY	53.16 %
Non VW Group Vehicles		15	0.04 %	16,622,975 JPY	0.03 %
	Subtotal	15	0.04 %	16,622,975 JPY	0.03 %
	Total	34,596	100.00 %	63,352,345,204 JPY	100.00 %

Geographic Distribution by Prefecture

Prefecture	Number of Loans	Percentage of Loans	Outstanding Discounted Principal Balance	Percentage of Balance
Tokyo	5,283	15.27 %	11,085,908,446 JPY	17.50 %
Kanagawa	3,374	9.75 %	6,380,091,897 JPY	10.07 %
Aichi	2,489	7.19 %	4,397,380,375 JPY	6.94 %
Saitama	2,298	6.64 %	4,177,876,395 JPY	6.59 %
Osaka	2,066	5.97 %	4,011,764,440 JPY	6.33 %
Chiba	1,542	4.46 %	2,727,587,284 JPY	4.31 %
Fukuoka	1,463	4.23 %	2,690,922,001 JPY	4.25 %
Hokkaido	1,293	3.74 %	2,577,617,612 JPY	4.07 %
Hyogo	1,340	3.87 %	2,418,799,691 JPY	3.82 %
Shizuoka	1,022	2.95 %	1,844,456,119 JPY	2.91 %
Ibaraki	1,050	3.04 %	1,813,762,414 JPY	2.86 %
Hiroshima	805	2.33 %	1,344,160,797 JPY	2.12 %
Tochigi	728	2.10 %	1,305,355,260 JPY	2.06 %
Kyoto	684	1.98 %	1,204,794,718 JPY	1.90 %
Gunma	679	1.96 %	1,082,332,899 JPY	1.71 %
Miyagi	607	1.75 %	1,053,991,677 JPY	1.66 %
Okayama	516	1.49 %	900,872,193 JPY	1.42 %
Gifu	539	1.56 %	895,829,129 JPY	1.41 %
Nagano	532	1.54 %	866,022,755 JPY	1.37 %
Mie	448	1.29 %	719,956,553 JPY	1.14 %
Fukushima	391	1.13 %	632,664,324 JPY	1.00 %
Niigata	387	1.12 %	598,964,293 JPY	0.95 %
Yamaguchi	349	1.01 %	587,547,285 JPY	0.93 %
Nara	310	0.90 %	560,648,483 JPY	0.88 %
Oita	322	0.93 %	541,989,007 JPY	0.86 %
Yamanashi	256	0.74 %	480,017,280 JPY	0.76 %
Ishikawa	294	0.85 %	473,519,486 JPY	0.75 %
Shiga	278	0.80 %	467,376,132 JPY	0.74 %
Kumamoto	281	0.81 %	455,513,043 JPY	0.72 %
Kagoshima	249	0.72 %	435,498,506 JPY	0.69 %
Toyama	258	0.75 %	427,747,435 JPY	0.68 %
Fukui	222	0.64 %	415,515,374 JPY	0.66 %
Wakayama	216	0.62 %	412,604,145 JPY	0.65 %
Yamagata	251	0.73 %	388,160,822 JPY	0.61 %
Kagawa	204	0.59 %	318,884,673 JPY	0.50 %
Nagasaki	168	0.49 %	301,459,640 JPY	0.48 %
Iwate	164	0.47 %	295,549,927 JPY	0.47 %
Tokushima	173	0.50 %	290,537,715 JPY	0.46 %
Miyazaki	158	0.46 %	274,694,268 JPY	0.43 %
Saga	144	0.42 %	254,800,486 JPY	0.40 %
Ehime	151	0.44 %	227,443,036 JPY	0.36 %
Shimane	119	0.34 %	224,048,542 JPY	0.35 %
Aomori	133	0.38 %	204,767,684 JPY	0.32 %
Akita	117	0.34 %	201,902,807 JPY	0.32 %
Tottori	110	0.32 %	172,233,802 JPY	0.27 %
Kouchi	80	0.23 %	128,661,214 JPY	0.20 %
Okinawa	53	0.15 %	80,113,140 JPY	0.13 %
Total	34,596	100.00 %	63,352,345,204 JPY	100.00 %

Distribution by Obligor Concentration
Distribution of Loan Contracts and Vehicles per Obligor

Contract Concentration	Number of Customers	Percentage of Customers	Number of Loans	Percentage of Loans	Outstanding Discounted Principal Balance	Percentage of Balance
1	33,457	97.22 %	33,457	96.71 %	60,755,577,819 JPY	95.90 %
2	896	2.60 %	1,056	3.05 %	2,384,234,127 JPY	3.76 %
3	54	0.16 %	69	0.20 %	183,438,316 JPY	0.29 %
4	4	0.01 %	10	0.03 %	20,100,196 JPY	0.03 %
5	2	0.01 %	3	0.01 %	6,620,089 JPY	0.01 %
6 - 10	1	0.00 %	1	0.00 %	2,374,657 JPY	0.00 %
11 or more	0	0.00 %	0	0.00 %	0 JPY	0.00 %
Total	34,414	100.00 %	34,596	100.00 %	63,352,345,204 JPY	100.00 %

Top 20 Obligor

Number	Number of Contracts	Outstanding Discounted Principal Balance	Percentage of Balance
1	2	14,349,641 JPY	0.02 %
2	2	13,617,778 JPY	0.02 %
3	2	13,539,128 JPY	0.02 %
4	2	12,920,521 JPY	0.02 %
5	2	12,054,132 JPY	0.02 %
6	2	11,617,054 JPY	0.02 %
7	2	10,245,229 JPY	0.02 %
8	1	9,768,113 JPY	0.02 %
9	1	9,737,621 JPY	0.02 %
10	1	9,677,483 JPY	0.02 %
11	2	9,587,785 JPY	0.02 %
12	2	9,490,777 JPY	0.01 %
13	1	9,466,200 JPY	0.01 %
14	1	9,272,281 JPY	0.01 %
15	1	9,062,715 JPY	0.01 %
16	1	9,002,896 JPY	0.01 %
17	1	8,922,481 JPY	0.01 %
18	1	8,875,090 JPY	0.01 %
19	1	8,842,207 JPY	0.01 %
20	1	8,841,553 JPY	0.01 %
Total 1 -20	29	208,890,685 JPY	0.33 %

Remarks:

Figures above are calculated based on each of the Sub-Servicers respectively and not across both of the Sub-Servicers.

Distribution by Contract Start Month

Origination Month	Number of Loans	Percentage of Loans	Outstanding Discounted Principal Balance	Percentage of Balance
03.2012	2	0.01 %	83,595 JPY	0.00 %
04.2012	3	0.01 %	380,987 JPY	0.00 %
05.2012	2	0.01 %	229,892 JPY	0.00 %
06.2012	1	0.00 %	152,661 JPY	0.00 %
07.2012	1	0.00 %	242,474 JPY	0.00 %
08.2012	1	0.00 %	261,559 JPY	0.00 %
09.2012	3	0.01 %	1,945,807 JPY	0.00 %
10.2012	0	0.00 %	0 JPY	0.00 %
11.2012	1	0.00 %	431,773 JPY	0.00 %
12.2012	6	0.02 %	3,513,919 JPY	0.01 %
01.2013	5	0.01 %	1,445,018 JPY	0.00 %
02.2013	4	0.01 %	3,034,053 JPY	0.00 %
03.2013	65	0.19 %	31,050,679 JPY	0.05 %
04.2013	54	0.16 %	30,054,240 JPY	0.05 %
05.2013	69	0.20 %	39,135,185 JPY	0.06 %
06.2013	95	0.27 %	62,263,460 JPY	0.10 %
07.2013	71	0.21 %	45,028,622 JPY	0.07 %
08.2013	52	0.15 %	47,030,043 JPY	0.07 %
09.2013	90	0.26 %	65,156,857 JPY	0.10 %
10.2013	77	0.22 %	69,714,277 JPY	0.11 %
11.2013	89	0.26 %	84,014,662 JPY	0.13 %
12.2013	147	0.42 %	144,576,425 JPY	0.23 %
01.2014	96	0.28 %	100,484,556 JPY	0.16 %
02.2014	177	0.51 %	183,241,506 JPY	0.29 %
03.2014	295	0.85 %	277,733,686 JPY	0.44 %
04.2014	85	0.25 %	79,862,988 JPY	0.13 %
05.2014	117	0.34 %	108,563,244 JPY	0.17 %
06.2014	168	0.49 %	169,652,959 JPY	0.27 %
07.2014	122	0.35 %	126,875,672 JPY	0.20 %
08.2014	92	0.27 %	112,290,674 JPY	0.18 %
09.2014	164	0.47 %	190,122,293 JPY	0.30 %
10.2014	111	0.32 %	120,338,991 JPY	0.19 %
11.2014	124	0.36 %	148,124,659 JPY	0.23 %
12.2014	189	0.55 %	248,783,733 JPY	0.39 %
01.2015	135	0.39 %	153,595,608 JPY	0.24 %
02.2015	215	0.62 %	273,134,086 JPY	0.43 %
03.2015	985	2.85 %	1,164,581,600 JPY	1.84 %
04.2015	297	0.86 %	353,052,781 JPY	0.56 %
05.2015	532	1.54 %	683,389,408 JPY	1.08 %
06.2015	645	1.86 %	930,135,978 JPY	1.47 %
07.2015	514	1.49 %	704,653,148 JPY	1.11 %
08.2015	546	1.58 %	801,261,457 JPY	1.26 %
09.2015	791	2.29 %	1,261,145,124 JPY	1.99 %
10.2015	435	1.26 %	671,895,928 JPY	1.06 %
11.2015	498	1.44 %	843,111,687 JPY	1.33 %
12.2015	1,075	3.11 %	1,811,332,094 JPY	2.86 %
01.2016	954	2.76 %	1,732,061,388 JPY	2.73 %
02.2016	1,368	3.95 %	2,522,950,937 JPY	3.98 %
03.2016	2,315	6.69 %	3,997,527,906 JPY	6.31 %
04.2016	1,133	3.27 %	2,110,803,330 JPY	3.33 %
05.2016	1,531	4.43 %	2,806,821,762 JPY	4.43 %
06.2016	1,817	5.25 %	3,483,335,762 JPY	5.50 %
07.2016	1,622	4.69 %	3,080,477,623 JPY	4.86 %
08.2016	1,842	5.32 %	3,666,639,754 JPY	5.79 %
09.2016	2,514	7.27 %	5,073,194,888 JPY	8.01 %
10.2016	1,628	4.71 %	3,345,261,369 JPY	5.28 %
11.2016	2,231	6.45 %	4,733,108,116 JPY	7.47 %
12.2016	839	2.43 %	1,761,699,039 JPY	2.78 %
01.2017	662	1.91 %	1,479,433,510 JPY	2.34 %
02.2017	808	2.34 %	1,824,201,183 JPY	2.88 %
03.2017	1,221	3.53 %	2,735,692,207 JPY	4.32 %
04.2017	479	1.38 %	1,095,851,678 JPY	1.73 %
05.2017	543	1.57 %	1,292,304,768 JPY	2.04 %
06.2017	608	1.76 %	1,433,483,382 JPY	2.26 %
07.2017	330	0.95 %	743,623,507 JPY	1.17 %
08.2017	310	0.90 %	770,689,058 JPY	1.22 %
09.2017	345	1.00 %	867,313,589 JPY	1.37 %
10.2017	171	0.49 %	428,860,195 JPY	0.68 %
11.2017	79	0.23 %	219,900,205 JPY	0.35 %
12.2017	0	0.00 %	0 JPY	0.00 %
01.2018	0	0.00 %	0 JPY	0.00 %
02.2018	0	0.00 %	0 JPY	0.00 %
Total	34,596	100.00 %	63,352,345,204 JPY	100.00 %

Distribution by Contract End Month

Maturity Month	Number of Loans	Percentage of Loans	Outstanding Discounted Principal Balance	Percentage of Balance
03.2018	1,044	3.02 %	906,914,220 JPY	1.43 %
04.2018	350	1.01 %	262,713,040 JPY	0.41 %
05.2018	546	1.58 %	472,462,867 JPY	0.75 %
06.2018	758	2.19 %	755,760,648 JPY	1.19 %
07.2018	586	1.69 %	546,138,352 JPY	0.86 %
08.2018	519	1.50 %	563,987,101 JPY	0.89 %
09.2018	819	2.37 %	930,539,858 JPY	1.47 %
10.2018	459	1.33 %	464,776,029 JPY	0.73 %
11.2018	572	1.65 %	617,616,271 JPY	0.97 %
12.2018	871	2.52 %	1,175,035,813 JPY	1.85 %
01.2019	548	1.58 %	810,044,413 JPY	1.28 %
02.2019	764	2.21 %	1,125,745,450 JPY	1.78 %
03.2019	1,261	3.64 %	2,023,823,159 JPY	3.19 %
04.2019	566	1.64 %	1,023,258,835 JPY	1.62 %
05.2019	758	2.19 %	1,353,930,063 JPY	2.14 %
06.2019	965	2.79 %	1,828,942,555 JPY	2.89 %
07.2019	717	2.07 %	1,351,954,899 JPY	2.13 %
08.2019	738	2.13 %	1,432,424,415 JPY	2.26 %
09.2019	1,102	3.19 %	2,261,195,709 JPY	3.57 %
10.2019	742	2.14 %	1,482,408,624 JPY	2.34 %
11.2019	979	2.83 %	2,143,871,730 JPY	3.38 %
12.2019	548	1.58 %	1,076,362,932 JPY	1.70 %
01.2020	429	1.24 %	798,605,821 JPY	1.26 %
02.2020	604	1.75 %	1,123,287,546 JPY	1.77 %
03.2020	837	2.42 %	1,628,197,582 JPY	2.57 %
04.2020	305	0.88 %	639,437,013 JPY	1.01 %
05.2020	440	1.27 %	863,211,977 JPY	1.36 %
06.2020	468	1.35 %	945,009,287 JPY	1.49 %
07.2020	338	0.98 %	604,817,069 JPY	0.95 %
08.2020	424	1.23 %	839,135,242 JPY	1.32 %
09.2020	492	1.42 %	949,938,246 JPY	1.50 %
10.2020	299	0.86 %	563,371,509 JPY	0.89 %
11.2020	334	0.97 %	631,766,838 JPY	1.00 %
12.2020	438	1.27 %	785,306,285 JPY	1.24 %
01.2021	543	1.57 %	1,020,429,271 JPY	1.61 %
02.2021	807	2.33 %	1,583,065,418 JPY	2.50 %
03.2021	1,140	3.30 %	2,180,441,016 JPY	3.44 %
04.2021	564	1.63 %	1,109,064,276 JPY	1.75 %
05.2021	758	2.19 %	1,448,688,841 JPY	2.29 %
06.2021	821	2.37 %	1,716,111,461 JPY	2.71 %
07.2021	825	2.38 %	1,699,534,914 JPY	2.68 %
08.2021	946	2.73 %	2,018,532,761 JPY	3.19 %
09.2021	1,261	3.64 %	2,747,898,066 JPY	4.34 %
10.2021	791	2.29 %	1,807,136,931 JPY	2.85 %
11.2021	1,048	3.03 %	2,474,787,424 JPY	3.91 %
12.2021	370	1.07 %	862,485,916 JPY	1.36 %
01.2022	322	0.93 %	807,067,917 JPY	1.27 %
02.2022	380	1.10 %	923,411,594 JPY	1.46 %
03.2022	599	1.73 %	1,403,583,819 JPY	2.22 %
04.2022	265	0.77 %	608,262,815 JPY	0.96 %
05.2022	296	0.86 %	720,905,335 JPY	1.14 %
06.2022	307	0.89 %	782,692,243 JPY	1.24 %
07.2022	188	0.54 %	473,490,298 JPY	0.75 %
08.2022	201	0.58 %	511,312,335 JPY	0.81 %
09.2022	193	0.56 %	521,663,005 JPY	0.82 %
10.2022	105	0.30 %	278,732,470 JPY	0.44 %
11.2022	62	0.18 %	160,899,798 JPY	0.25 %
12.2022	26	0.08 %	66,257,756 JPY	0.10 %
01.2023	15	0.04 %	38,576,942 JPY	0.06 %
02.2023	20	0.06 %	53,902,577 JPY	0.09 %
03.2023	23	0.07 %	59,652,669 JPY	0.09 %
04.2023	10	0.03 %	24,410,229 JPY	0.04 %
05.2023	19	0.05 %	58,578,900 JPY	0.09 %
06.2023	17	0.05 %	45,175,799 JPY	0.07 %
07.2023	6	0.02 %	16,596,996 JPY	0.03 %
08.2023	9	0.03 %	24,555,701 JPY	0.04 %
09.2023	14	0.04 %	41,321,296 JPY	0.07 %
10.2023	10	0.03 %	27,650,741 JPY	0.04 %
11.2023	3	0.01 %	8,828,749 JPY	0.01 %
12.2023	2	0.01 %	9,110,926 JPY	0.01 %
01.2024	1	0.00 %	2,785,633 JPY	0.00 %
02.2024	2	0.01 %	6,429,734 JPY	0.01 %
03.2024	1	0.00 %	4,568,376 JPY	0.01 %
04.2024	1	0.00 %	3,331,127 JPY	0.01 %
05.2024	0	0.00 %	0 JPY	0.00 %
06.2024	0	0.00 %	0 JPY	0.00 %
07.2024	1	0.00 %	4,236,065 JPY	0.01 %
08.2024	0	0.00 %	0 JPY	0.00 %
09.2024	1	0.00 %	2,845,655 JPY	0.00 %
10.2024	3	0.01 %	11,340,011 JPY	0.02 %
Total	34,596	100.00 %	63,352,345,204 JPY	100.00 %

Distribution by Monthly Payment

Monthly Payment	Number of Loans	Percentage of Loans	Outstanding Discounted Principal Balance	Percentage of Balance
<= 10,000 JPY	1,755	5.07 %	2,005,149,491 JPY	3.17 %
10,001 JPY - 20,000 JPY	6,469	18.70 %	8,096,824,405 JPY	12.78 %
20,001 JPY - 30,000 JPY	9,315	26.93 %	13,593,188,274 JPY	21.46 %
30,001 JPY - 40,000 JPY	6,939	20.06 %	12,539,294,720 JPY	19.79 %
40,001 JPY - 50,000 JPY	3,936	11.38 %	8,367,651,460 JPY	13.21 %
50,001 JPY - 60,000 JPY	2,270	6.56 %	5,470,159,160 JPY	8.63 %
60,001 JPY - 70,000 JPY	1,229	3.55 %	3,373,026,150 JPY	5.32 %
70,001 JPY - 80,000 JPY	709	2.05 %	2,157,861,348 JPY	3.41 %
80,001 JPY - 90,000 JPY	516	1.49 %	1,646,560,945 JPY	2.60 %
90,001 JPY - 100,000 JPY	408	1.18 %	1,437,072,807 JPY	2.27 %
100,001 JPY - 110,000 JPY	272	0.79 %	1,022,836,582 JPY	1.61 %
110,001 JPY - 120,000 JPY	187	0.54 %	797,309,875 JPY	1.26 %
120,001 JPY - 130,000 JPY	154	0.45 %	674,622,261 JPY	1.06 %
130,001 JPY - 140,000 JPY	96	0.28 %	442,067,840 JPY	0.70 %
140,001 JPY - 150,000 JPY	70	0.20 %	349,979,589 JPY	0.55 %
>= 150,001 JPY	271	0.78 %	1,378,740,297 JPY	2.18 %
Total	34,596	100.00 %	63,352,345,204 JPY	100.00 %

Distribution by Bonus Payment

Bonus Payment	Number of Loans	Percentage of Loans	Outstanding Discounted Principal Balance	Percentage of Balance
No Bonus Payment	20,806	60.14 %	37,529,913,526 JPY	59.24 %
1 JPY - 25,000 JPY	320	0.92 %	416,052,529 JPY	0.66 %
25,001 JPY - 50,000 JPY	3,438	9.94 %	5,154,816,939 JPY	8.14 %
50,001 JPY - 75,000 JPY	1,223	3.54 %	1,995,926,104 JPY	3.15 %
75,001 JPY - 100,000 JPY	4,751	13.73 %	8,695,047,881 JPY	13.72 %
100,001 JPY - 125,000 JPY	595	1.72 %	1,161,750,541 JPY	1.83 %
125,001 JPY - 150,000 JPY	1,841	5.32 %	4,075,261,349 JPY	6.43 %
150,001 JPY - 175,000 JPY	200	0.58 %	450,469,984 JPY	0.71 %
175,001 JPY - 200,000 JPY	878	2.54 %	2,210,260,497 JPY	3.49 %
200,001 JPY - 225,000 JPY	56	0.16 %	133,841,391 JPY	0.21 %
225,001 JPY - 250,000 JPY	217	0.63 %	622,979,183 JPY	0.98 %
250,001 JPY - 275,000 JPY	19	0.05 %	59,888,511 JPY	0.09 %
275,001 JPY - 300,000 JPY	156	0.45 %	492,186,635 JPY	0.78 %
300,001 JPY - 325,000 JPY	8	0.02 %	28,429,587 JPY	0.04 %
325,001 JPY - 350,000 JPY	34	0.10 %	108,798,812 JPY	0.17 %
350,001 JPY - 375,000 JPY	6	0.02 %	23,540,468 JPY	0.04 %
375,001 JPY - 400,000 JPY	21	0.06 %	96,322,170 JPY	0.15 %
400,001 JPY - 425,000 JPY	0	0.00 %	0 JPY	0.00 %
425,001 JPY - 450,000 JPY	8	0.02 %	27,550,745 JPY	0.04 %
450,001 JPY - 475,000 JPY	0	0.00 %	0 JPY	0.00 %
475,001 JPY - 500,000 JPY	15	0.04 %	53,901,050 JPY	0.09 %
500,001 JPY or more	4	0.01 %	15,407,302 JPY	0.02 %
Total	34,596	100.00 %	63,352,345,204 JPY	100.00 %

Distribution by Motor Type

Motor Type	Number of Loans	Percentage of Loans	Outstanding Discounted Principal Balance	Percentage of Balance
EA 189	0	0.00 %	0 JPY	0.00 %
Other	34,596	100.00 %	63,352,345,204 JPY	100.00 %
Total	34,596	100.00 %	63,352,345,204 JPY	100.00 %

Disclaimer

This presentation contains forward-looking statements and information on the business development of the Volkswagen Group. These statements may be spoken or written and can be recognized by terms such as "expects", "anticipates", "intends", "plans", "believes", "seeks", "estimates", "will", or words with similar meaning. These statements are based on assumptions relating to the development of the economies of individual countries, and in particular of the automotive industry, which we have made on the basis of the information available to us and which we consider to be realistic at the time of going to press. The estimates given involve a degree of risk, and the actual developments may differ from those forecast.

Consequently, any unexpected fall in demand or economic stagnation in our key sales markets, such as in Western Europe (and especially Germany) or in the USA, Brazil or China, will have a corresponding impact on the development of our business. The same applies in the event of a significant shift in current exchange rates relative to the US dollar, sterling, yen, Brazilian real, Chinese renminbi and Czech koruna.

If any of these or other risks occur, or if the assumptions underlying any of these statements prove incorrect, the actual results may significantly differ from those expressed or implied by such statements.

We do not update forward-looking statements retrospectively. Such statements are valid on the date of publication and can be superceded.

This information does not constitute an offer to exchange or sell or an offer to exchange or buy any securities.