

Deal Name: Driver Japan six

Originator: Volkswagen Financial Services Japan Ltd.
Gotenyama Trust Tower 17F
7-35 Kitashinagawa 4-chome, Shinagawa-ku
Tokyo 140-0001, Japan

Reporting Entity: Volkswagen Financial Services Japan Ltd.
Treasury Dept.
Gotenyama Trust Tower 17F
7-35 Kitashinagawa 4-chome, Shinagawa-ku
Tokyo 140-0001, Japan
Tel No.: +81(0)3-5792-7261
Fax No.: +81(0)3-3280-7365
E-mail: vwfsjp.abs@vwfs.com

**Trustor of the First Trust:
Servicer:** Volkswagen Financial Services Japan Ltd.

**Trustee of the First Trust:
Trustee of the Second Trust:** Deutsche Trust Company Limited Japan
Sanno Park Tower, 11-1,
Nagatacho 2-chome, Chiyoda-ku,
Tokyo, 100-6172, Japan
Trust Business Administration Department
Tel No.: +81(0)3-5156-5637
Fax No.: +81(0)3-5156-5658
E-mail: DB_Trust_Trust@list.db.com



Contents

Page	Tables of Contents
1	Front Page
2	Contents
3	Deal Overview
4	Deal Overview: Counterparties I
5	Deal Overview: Counterparties II
6	Information regarding the TBI and ABL to the Second Trust
7	Pool Information
8	Available Distribution
9	Waterfall
10	Credit Enhancement
11	Cumulative Gross Loss Ratio & Performance Trigger
12	Cumulative Gross Loss Ratio & Performance Trigger (Chart)
13	Default & Delinquencies
14	Run Out Schedule (Previous)
15	Run Out Schedule
16	Expected Amortization to the Second Trust
17	Sub-Servicer
18	Brand
19	New and Used
20	Product Type
21	RV
22	Brand New and Used
23	Customer Type
24	Outstanding Discounted Principal Balance
25	Original Principal Amount
26	Interest Rate paid by the Obligor
27	Original Term
28	Remaining Term
29	Seasoning
30	Type of Car
31	Brand and Model
32	Geographic Dist. by Prefecture
33	Obligor Concentration
34	Contract Start Month
35	Contract End Month
36	Monthly payment
37	Bonus payment
38	Mortor Type

Deal Overview

Cut Off Date:	2017/02/10		
Trust Commencement Date:	2017/02/23	Legal Maturity of the First Trust:	2025/06/27
Monthly Period:	2017/12/11	to	2018/01/10
Reporting Date:	2018/01/17		
Reporting Frequency:	monthly		
Period No.:	11		
Remittance Date:	2018/01/23		
Advance Payment Date:	2018/01/23		
Cash Adjustment Date:	2018/01/23		
Additional Entrustment Date:	2018/01/25		
Trust Calculation Date:	2018/01/25		
Trust Calculation Period:	2017/12/27	to	2018/01/25
First Trust Payment Date:	2018/01/26		
Second Trust Payment Date:	2018/01/29		
Interest Calculation Period:	2017/12/29	to	2018/01/29
Next Reporting Date:	2018/02/19		

Pool information at the Initial Cut off Date

	Number of Contracts	Outstanding Discounted Principal Balance	Outstanding Nominal Balance
Outstanding Pool	30,757	64,171,706,472 JPY	67,028,993,300 JPY

Credit Type	Percentage of Loans	Outstanding Discounted Principal Balance	Percentage of Balance
Balloon	76.13 %	55,443,642,000 JPY	86.40 %
Equal Instalment Loan	23.87 %	8,728,064,472 JPY	13.60 %
Total	100.00 %	64,171,706,472 JPY	100.00 %

Type of Car	Percentage of Loans	Outstanding Discounted Principal Balance	Percentage of Balance
New	66.66 %	49,506,381,305 JPY	77.15 %
Used	33.34 %	14,665,325,167 JPY	22.85 %
Total	100.00 %	64,171,706,472 JPY	100.00 %

Deal Overview: Counterparties I

Joint Lead Managers:

Shinsei Securities Co., Ltd.

Nihonbashi Muromachi Nomura Building, 4-3,
 Nihonbashi-muromachi 2-chome,
 Chuo-ku,
 Tokyo 103-0022, Japan

BNP Paribas Securities (Japan) Limited

GranTokyo North Tower, 9-1,
 Marunouchi 1-chome,
 Chiyoda-ku,
 Tokyo 100-6740, Japan

Trust Management Account Bank:

The Bank of Tokyo-Mitsubishi UFJ, Ltd.

4-2 Toranomon 1-chome,
 Minato-ku
 Tokyo 105-0001, Japan

Rating								
Moody's			Fitch			R&I		
Long Term	Short Term	Outlook	Long Term	Short Term	Outlook	Long Term	Short Term	Outlook
n.a.	n.a.	n.a.	n.a.	n.a.	n.a.	n.a.	n.a.	n.a.
n.a.	n.a.	n.a.	n.a.	n.a.	n.a.	n.a.	n.a.	n.a.
A1	P-1	Stable	A	F1	Stable	AA-	a-1+	Stable

Originator:

Trustor of the First Trust:

Servicer:

Volkswagen Financial Services Japan Ltd.

Gotenyama Trust Tower 17F
 7-35 Kitashinagawa 4-chome, Shinagawa-ku
 Tokyo 140-0001, Japan

Trustee of the First Trust:

Trustee of the Second Trust:

Deutsche Trust Company Limited Japan

Attn.: Driver Japan Six
 Trust Business Administration Department

ABL Lender to the First Trust:

Trustor of the Second Trust:

Shinsei Securities Co., Ltd.

Seller of the Trust Beneficial

Interest of the Second Trust

Shinsei Securities Co., Ltd.
 BNP Paribas Securities (Japan) Limited

Deal Overview: Counterparties II

Rating Agencies:

Moody's SF Japan K.K.

Attn.: Driver Japan six
 Structure Finance Group Monitoring Division
 5-1 Atago 2-chome, Minato-ku
 Tokyo 105-6220, Japan
 E-mail: monitor.ms fj@moodys.com

Fitch Ratings Japan Limited

Attn.: Driver Japan six
 Structured Finance
 Kojimachi Crystal City East Wing 3rd Floor,
 4-8 Kōjimachi, Chiyoda-ku,
 Tokyo 102-0083, Japan
 E-mail: tokyo.surveillance@fitchratings.com

Rating and Investment Information, Inc.

Attn.: Monitoring Group Department:
 Structured Finance Department
 TERRACE SQUARE, 3-22,
 Kanda Nishikicho, Chiyoda-ku,
 Tokyo 101-0054, Japan
 E-mail: sfmonitor@r-i.co.jp

Rating of VW

Volkswagen Financial Services AG

Volkswagen AG

Rating								
Moody's			Fitch			R&I		
Short Term	Long Term	Outlook	Short Term	Long Term	Outlook	Short Term	Long Term	Outlook
P-2	A3	Negative	n.a.	n.a.	n.a.	n.a.	n.a.	n.a.
P-2	A3	Negative	F2	BBB+	Stable	n.a.	n.a.	n.a.

Information regarding Trust Beneficial Interest of the Second Trust & Asset Backed Loan to the Second Trust

Rating Details

Rating at Issue Date

	<u>TBI</u>	<u>ABL</u>
Moody's	Aaa(sf)	Aaa(sf)
Fitch	AAAsf	AAAsf
R&I	AAA	AAA

Current Rating

	<u>TBI</u>	<u>ABL</u>
Moody's	Aaa(sf)	Aaa(sf)
Fitch	AAAsf	AAAsf
R&I	AAA	AAA

Information on TBI & ABL

	<u>TBI</u>	<u>ABL</u>
Initial Balance	39,200,000,000 JPY	20,800,000,000 JPY
Expected Maturity Date	2021/05/28	2021/05/28
Legal Maturity of the Second Trust	2025/06/30	2025/06/30
Payment Dates	28th	28th
Business Day Convention	Modified Following	Modified Following
Listing	None	—

Information on Interest

	<u>TBI</u>	<u>ABL</u>
Fixed/ Floating	Fixed	Fixed
Current Coupon	0.19%	0.19%
Day Count Convention	30/360	30/360

Selling Restriction

The holders of the Beneficial Interest and the ABL Lenders* are prohibited from dividing, assigning, pledging or creating any other security interest over any of the Beneficial Interest and the Asset Backed Loans without the prior written approval of the Trustee of the Second Trust.

(*)The holders of the Beneficial Interest and the ABL Lenders are limited to specified investors (*tokutei toushika*) as defined under Paragraph 31 of Article 2 of the Financial Instruments and Exchange Act (Law no.25 of 1948 as amended).

Clean-Up Call

VWFS Japan as the Trustor of the First Trust has a right at its option to exercise a clean-up call to repurchase of all, but not part, of the outstanding Auto Loan Receivables from the Trustee of the First Trust on any Trust Calculation Date, the Discounted Principal Balance of all outstanding Auto Loan Receivables is expected to be less than ten percent (10%) of the Discounted Principal Balance of the Initial Auto Loan Receivables as of the Initial Cut-off Date after the distribution pursuant to Article 18.1 of the First Trust Agreement on the immediately following First Trust Payment Date.

Pool Information
Pool Balance on Initial Cut-Off Date

Status	Number of Contracts	Outstanding Discounted Principal Balance
Normal	30,757	64,171,706,472 JPY
Cancellation	0	0 JPY
Early Termination	0	0 JPY
Defaulted Receivables	0	0 JPY
Matured	0	0 JPY
Refinance Option	0	0 JPY
Repurchase	0	0 JPY
Total	30,757	64,171,706,472 JPY

Pool Balance before entrustment of Additional Auto Loan Receivables

Status	Number of Contracts on previous EoP	Outstanding Discounted Principal Balance on previous EoP	Number of Contracts "as Collections" during the relevant Monthly Period*	Outstanding Discounted Principal Balance "as Collections" during the relevant Monthly Period*	Number of Contracts EoP before entrustment of Additional Auto Loan Receivables	Outstanding Discounted Principal Balance EoP before entrustment of Additional Auto Loan Receivables
Normal	34,702	65,577,242,522 JPY	33,836	2,193,758,358 JPY	33,836	62,205,368,461 JPY
Cancellation	0	0 JPY	0	0 JPY	0	0 JPY
Early Termination	0	0 JPY	383	729,358,732 JPY	0	0 JPY
Defaulted Receivables	0	0 JPY	4	6,905,402 JPY	0	0 JPY
Matured	0	0 JPY	395	322,805,199 JPY	0	0 JPY
Refinance Option	0	0 JPY	84	119,046,370 JPY	0	0 JPY
Repurchase	0	0 JPY	0	0 JPY	0	0 JPY
Total	34,702	65,577,242,522 JPY	34,702	3,371,874,061 JPY	33,836	62,205,368,461 JPY

Pool Balance after entrustment of Additional Auto Loan Receivables

Status	Number of Contracts EoP before entrustment of Additional Auto Loan Receivables	Outstanding Discounted Principal Balance EoP before entrustment of Additional Auto Loan Receivables	Number of Contracts of Additional Auto Loan Receivables	Outstanding Discounted Principal Balance of Additional Auto Loan Receivables	Number of Contracts EoP after entrustment of Additional Auto Loan Receivables	Outstanding Discounted Principal Balance EoP after entrustment of Additional Auto Loan Receivables
Normal	33,836	62,205,368,461 JPY	1,469	3,371,647,677 JPY	35,305	65,577,016,138 JPY
Cancellation	0	0 JPY	0	0 JPY	0	0 JPY
Early Termination	0	0 JPY	0	0 JPY	0	0 JPY
Defaulted Receivables	0	0 JPY	0	0 JPY	0	0 JPY
Matured	0	0 JPY	0	0 JPY	0	0 JPY
Refinance Option	0	0 JPY	0	0 JPY	0	0 JPY
Repurchase	0	0 JPY	0	0 JPY	0	0 JPY
Total	33,836	62,205,368,461 JPY	1,469	3,371,647,677 JPY	35,305	65,577,016,138 JPY

Limits on Eligibility Criteria

Status Limits on Eligibility Criteria (v) (including Additional Entrustment)	Current Exposure in %	Limits in % of the aggregate Discounted Principal Balance of the Auto Loan Receivables outstanding	Status
(i) on Used Purchased Vehicle	22.49 %	35 %	OK
(ii) on Non-VW Vehicles	0.03 %	5 %	OK
(iii) on Balloon Payment	44.49 %	50 %	OK

Outstanding Balances

Monthly Period: from 2017/12/11 to 2018/01/10
Reporting Date: 2018/01/17
Trust Calculation Date: 2018/01/25

Outstanding Balances

	Number of Contracts	Aggregate Amount of the Discounted Principal Balance	Aggregate Amount of the Nominal Balance
Balance on the previous EoP	34,702	65,577,242,522 JPY	68,054,345,600 JPY
Balance after counting on the Collections during the relevant	33,836	62,205,368,461 JPY	64,544,464,600 JPY
Balance of Additional Auto Loan Receivables	1,469	3,371,647,677 JPY	3,531,255,900 JPY
Aggregate Amount of Auto Loan Receivables	35,305	65,577,016,138 JPY	68,075,720,500 JPY

Collections

	Number of Contracts	Aggregate Amount of the Discounted Principal Balance	Aggregate Amount of the Nominal Balance
Collections: Amortization of current contracts	33,836	2,193,758,358 JPY	2,308,351,900 JPY
Collections: Cancellation	0	0 JPY	0 JPY
Collections: Early Termination	383	729,358,732 JPY	730,450,204 JPY
Collections: Defaulted Receivables	4	6,905,402 JPY	6,932,052 JPY
Collections: Matured	395	322,805,199 JPY	323,240,800 JPY
Collections: Refinance Option	84	119,046,370 JPY	119,190,000 JPY
Collections: Repurchase	0	0 JPY	0 JPY
Sum	34,702	3,371,874,061 JPY	3,488,164,956 JPY

Available Distribution Amount

	Number of Contracts	Aggregate Amount of the Nominal Balance
(a) the Collections for the Monthly Period with respect to such Trust Calculation Date	34,702	3,488,164,956 JPY
(b) drawings from the Cash Collateral Ledger in accordance with Article 18.3 of the First Trust Agreement	0	0 JPY
(c) net investment earnings from Eligible Investments	0	0 JPY
(d) net proceeds from the sale or disposal of the Trust Assets of the First Trust	0	0 JPY
(e) any amount which is carried over from the immediately preceding Trust Calculation Date	0	0 JPY
Sum	34,702	3,488,164,956 JPY

Waterfall

There is no distinction between principal and interest, and all collections go through a single priority of payments			
		Payment	Remaining Amount
Available Distribution Amount	plus	3,488,164,956 JPY	3,488,164,956 JPY
(a) an amount necessary for the payment of all taxes and public charges to be paid to the relevant public authority by the immediately following First Trust Payment Date.	less	0 JPY	3,488,164,956 JPY
(b) an amount necessary for the payment of all Fees for the Trustee of the First Trust to be paid to the Trustee of the First Trust by the immediately following First Trust Payment Date.	less	590,195 JPY	3,487,574,761 JPY
(c) an amount necessary for the payment of the Servicing Fee to be paid to the Servicer by the immediately following First Trust Payment Date.	less	59,019,518 JPY	3,428,555,243 JPY
(d) an amount necessary for the payment of the Trust Expenses of the First Trust as provided in Article 23.1 (including the Rating Fees, Costs of the Second Trust and those fees not otherwise covered by (b) or (c) above) to be paid to the relevant party by the immediately following First Trust Payment Date (including any amounts advanced by the Trustee of the First Trust pursuant to Article 23.3)	less	605,855 JPY	3,427,949,388 JPY
(e) an amount necessary for the payment of overdue and unpaid interest on the Asset Backed Loans to the First Trust (if any) to be paid to the Trustee of the Second Trust by the immediately following First Trust Payment Date.	less	0 JPY	3,427,949,388 JPY
(f) an amount necessary for the payment to the Trustee of the Second Trust of interest on the Asset Backed Loan to the First Trust accruing during the relevant Interest Calculation Period	less	9,500,000 JPY	3,418,449,388 JPY
(g) an amount necessary to top up the balance thereof until it is equal to the Cash Collateral Ledger Target Balance	less	0 JPY	3,418,449,388 JPY
(h) (i) prior to the expiration of the Revolving Period: an amount necessary for the redemption of any Additional Senior Beneficial Interest;	less	3,152,490,577 JPY	265,958,811 JPY
(ii) following the expiration of the Revolving Period and prior to the occurrence of an Early Amortization Event, an amount necessary for the payment to the Trustee of the Second Trust of the Asset Backed Loan Principal Payment Amount for the relevant First Trust Payment Date.			
(iii) following the occurrence of the Early Amortization Event, an amount necessary for the payment to the Trustee of the Second Trust of the remaining principal balance of the Asset Backed Loan to the First Trust.			
(i) an amount necessary for the payment to the Trustee of the First Trust of any Indemnified Amounts which are not compensated by the Trustor of the First Trust	less	0 JPY	265,958,811 JPY
(j) an amount necessary for the payment to the Subordinated Beneficiary of the Subordinated Beneficial Principal Payment Amount for the relevant First Trust Payment Date.	less	222,353,250 JPY	43,605,561 JPY
(k) (i) prior to the expiration of the Revolving Period, then (x) if a transfer is made under (j) above, such remaining amount will be transferred to the Expenses Distribution Ledger for payment to the Subordinated Beneficiary as a payment of earnings on the Subordinated Beneficial Interest, and such payment shall be made on the First Trust Payment Date immediately following such Trust Calculation Date or (y) if no transfer is made under (j) above, such remaining amount will be carried forward to the next Trust Calculation Date.	less	43,605,561 JPY	0 JPY
(ii) following the expiration of the Revolving Period and prior to the occurrence of an Early Amortization Event, then such remaining amount will be transferred to the Expenses Distribution Ledger for payment to the Subordinated Beneficiary as a payment of earnings on the Subordinated Beneficial Interest, and such payment shall be made on the First Trust Payment Date immediately following such Trust Calculation Date.			
(iii) following the occurrence of an Early Amortization Event, the remaining amount in the Trust Collection Ledger will be carried forward to the next Trust Calculation Date.			

Credit Enhancement

Subordinated Principal Balance as of the relevant First Trust Payment Date

	Percentage of Aggregate Discounted Principal Balance	Value
(i) the aggregate amount of the Discounted Principal Balance of all Auto Loan Receivables outstanding		65,577,016,138 JPY
(ii) Asset Backed Loan Principal Balance on the relevant First Trust Payment Date		60,000,000,000 JPY
Overcollateralization (= (i) - (ii))	8.50 %	5,577,016,138 JPY
Trust Collection Ledger which is carried over from the immediately preceding Trust Calculation Date	0.00 %	0 JPY
The amount in the Cash Collateral Ledger	0.53 %	345,000,000 JPY
Subordinated Principal Balance	9.03 %	5,922,016,138 JPY

Trust Management Account (TMA)

	in JPY	+/-	in JPY (previous)
Initial Balance on Cash Entrustment Date	345,000,000 JPY		0 JPY
Outstanding Balance on First Trust Payment Date	345,000,000 JPY	0 JPY	345,000,000 JPY
(a) Expenses Distribution Ledger	0 JPY	0 JPY	0 JPY
(b) Trust Collection Ledger	0 JPY	0 JPY	0 JPY
(c) Cash Collateral Ledger	345,000,000 JPY	0 JPY	345,000,000 JPY
Cash Collateral Ledger Target Balance	345,000,000 JPY		

Calculation of Credit Enhancement

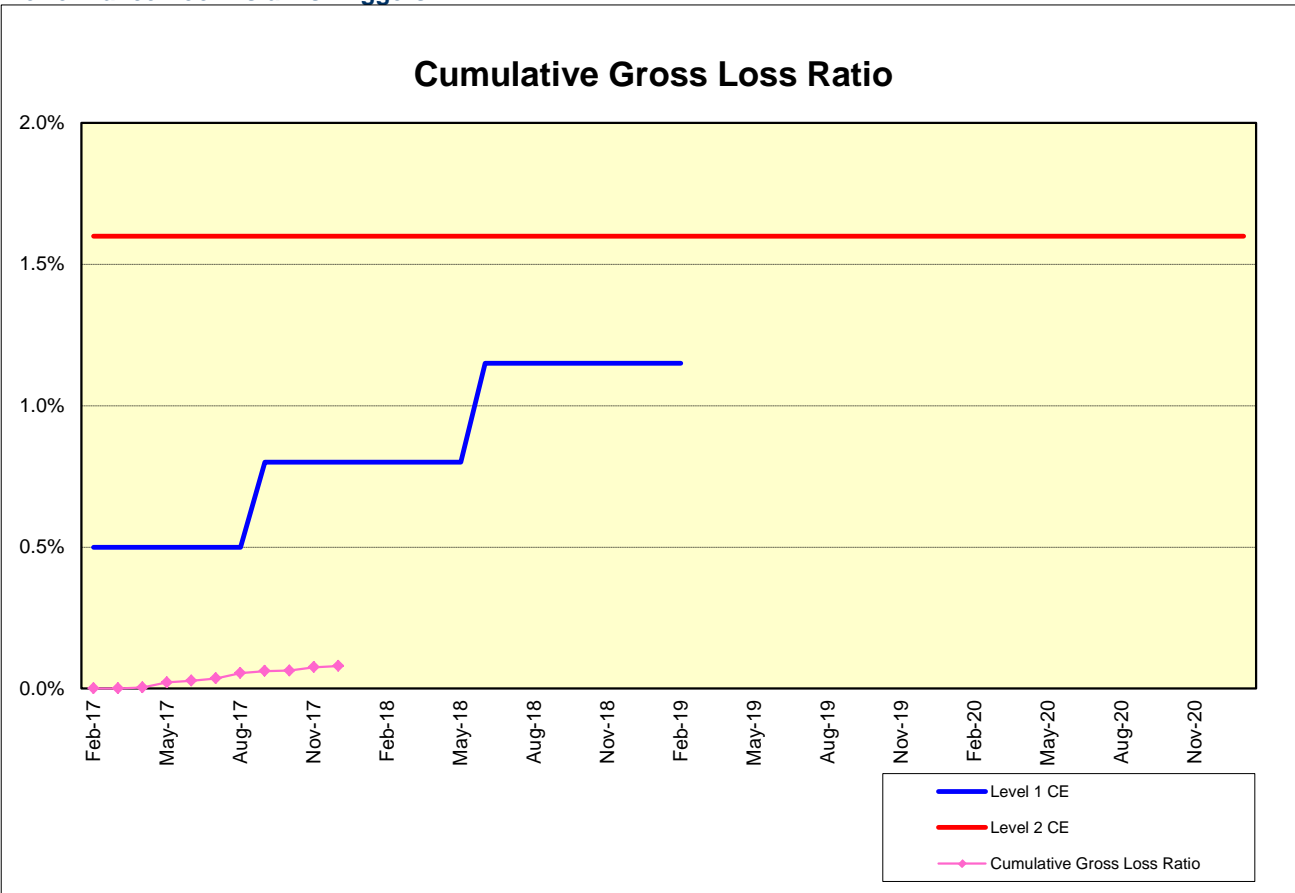
Driver Japan six's Credit Enhancement consists of the items listed above in the Subordinated Principal Balance as of the relevant date of determination (immediately following the First Trust Payment Date). The result provides an absolute value, which will be applied to the (amortized) Aggregate Discounted Principal Balance as of the end of the relevant date.

The transaction has a Revolving Period of 12 months until February 2018.

Asset Backed Loan Overcollateralization Percentage is (i) prior to the expiration of the Revolving Period, 8.5%, and (ii) following the expiration of the Revolving Period, 11.5%; provided, in each case no Credit Enhancement Increase Condition shall be in effect. After a Level 1 Credit Enhancement Increase Condition in effect, 17% and after a Level 2 Credit Enhancement Increase Condition is in effect, 100%.

Cumulative Gross Loss & Cumulative Repurchased Receivables

Performance Pool vis-a-vis Triggers



Cumulative Repurchased Receivables

	Number of Contracts	Repurchase Price
Beginning of Period	0	0 JPY
Repurchased Receivables	0	0 JPY
End of Period	0	0 JPY

Defaulted and Delinquent Contracts

Information of Delinquencies and Defaults

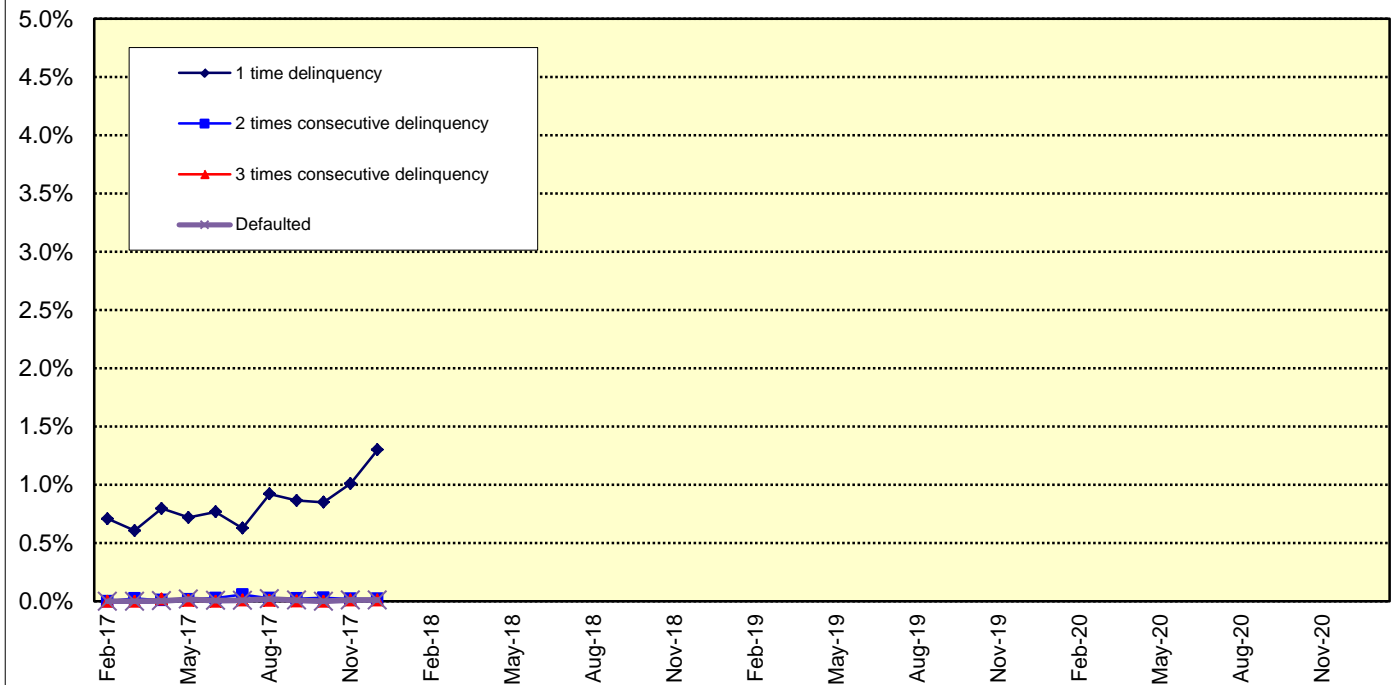
Current Reporting Period	Number of Contracts	Percentage of Contracts (*)	Outstanding Discounted Principal Balance	Percentage of Principal Balance (*)	Outstanding Nominal Balance	Percentage of Nominal Balance (*)
Delinquent	483	1.39 %	874,030,130 JPY	1.33 %	913,659,700 JPY	1.34 %
Default	4	0.01 %	6,905,402 JPY	0.01 %	6,932,052 JPY	0.01 %

(*) Based on the previous EoP

Delinquency Profile (Information Purpose Only)

Days in Arrears	Number of Contracts	Percentage of Contracts	Outstanding Discounted Principal Balance	Percentage of Principal Balance	Outstanding Nominal Balance	Percentage of Nominal Balance
1	474	1.34 %	855,634,880 JPY	1.30 %	894,357,200 JPY	1.31 %
2	6	0.02 %	10,002,547 JPY	0.02 %	10,487,900 JPY	0.02 %
3	3	0.01 %	8,392,703 JPY	0.01 %	8,814,600 JPY	0.01 %
Total	483	1.37 %	874,030,130 JPY	1.33 %	913,659,700 JPY	1.34 %

Delinquent / Defaulted (Gross Loss) Ratio



Run Out Schedule

ROS on the previous EoP on 2017/12/10

Next Payment Month	Number of Contracts	ABS Outstanding Principal	ABS Outstanding Interest	Outstanding Installment	ABS Remaining Principal	ABS Remaining Interest	ABS Remaining Installment
11.2017	34,702	65,577,242,522 JPY	2,477,103,078 JPY	68,054,345,600 JPY	0 JPY	0 JPY	0 JPY
12.2017	34,702	62,914,847,186 JPY	2,360,624,214 JPY	65,275,471,400 JPY	2,662,395,336 JPY	116,478,864 JPY	2,778,874,200 JPY
01.2018	34,222	61,225,135,427 JPY	2,248,889,573 JPY	63,474,025,000 JPY	1,689,711,759 JPY	111,734,641 JPY	1,801,446,400 JPY
02.2018	33,834	59,637,938,515 JPY	2,140,225,985 JPY	61,778,164,500 JPY	1,587,196,912 JPY	108,663,588 JPY	1,695,860,500 JPY
03.2018	33,222	57,545,129,999 JPY	2,034,322,001 JPY	59,579,452,000 JPY	2,092,808,516 JPY	105,903,984 JPY	2,198,712,500 JPY
04.2018	32,079	56,217,651,591 JPY	1,931,713,109 JPY	58,149,364,700 JPY	1,327,478,408 JPY	102,608,892 JPY	1,430,087,300 JPY
05.2018	31,712	54,699,493,052 JPY	1,831,472,048 JPY	56,530,965,100 JPY	1,518,158,539 JPY	100,241,061 JPY	1,618,399,600 JPY
06.2018	31,138	52,462,624,958 JPY	1,733,845,942 JPY	54,196,470,900 JPY	2,236,868,094 JPY	97,626,106 JPY	2,334,494,200 JPY
07.2018	30,339	50,397,063,535 JPY	1,640,069,265 JPY	52,037,132,800 JPY	2,065,561,423 JPY	93,776,677 JPY	2,169,338,100 JPY
08.2018	29,743	48,838,358,649 JPY	1,550,023,151 JPY	50,388,381,800 JPY	1,558,704,886 JPY	90,046,114 JPY	1,648,751,000 JPY
09.2018	29,218	47,141,275,508 JPY	1,462,769,092 JPY	48,604,044,600 JPY	1,697,083,141 JPY	87,254,059 JPY	1,784,337,200 JPY
10.2018	28,382	45,844,768,176 JPY	1,378,474,124 JPY	47,223,242,300 JPY	1,296,507,332 JPY	84,294,968 JPY	1,380,802,300 JPY
11.2018	27,913	44,463,640,941 JPY	1,296,536,159 JPY	45,760,177,100 JPY	1,381,127,235 JPY	81,937,965 JPY	1,463,065,200 JPY
12.2018	27,309	41,814,879,933 JPY	1,217,053,767 JPY	43,031,933,700 JPY	2,648,761,008 JPY	79,482,392 JPY	2,728,043,400 JPY
01.2019	26,431	40,148,237,472 JPY	1,142,309,128 JPY	41,290,546,600 JPY	1,666,642,461 JPY	74,744,639 JPY	1,741,387,100 JPY
02.2019	25,874	38,544,431,182 JPY	1,070,566,118 JPY	39,614,997,300 JPY	1,603,806,290 JPY	71,743,010 JPY	1,675,549,300 JPY
03.2019	25,097	36,394,106,494 JPY	1,001,665,206 JPY	37,395,771,700 JPY	2,150,324,688 JPY	68,900,912 JPY	2,219,225,600 JPY
04.2019	23,846	34,923,853,670 JPY	936,460,830 JPY	35,860,314,500 JPY	1,470,252,824 JPY	65,204,376 JPY	1,535,457,200 JPY
05.2019	23,280	33,303,011,404 JPY	873,769,096 JPY	34,176,780,500 JPY	1,620,842,266 JPY	62,691,734 JPY	1,683,534,000 JPY
06.2019	22,537	31,020,584,722 JPY	813,795,378 JPY	31,834,380,100 JPY	2,282,426,682 JPY	59,973,718 JPY	2,342,400,400 JPY
07.2019	21,577	29,055,118,736 JPY	757,636,464 JPY	29,812,755,200 JPY	1,965,465,986 JPY	56,158,914 JPY	2,021,624,900 JPY
08.2019	20,867	27,444,691,086 JPY	704,810,514 JPY	28,149,501,600 JPY	1,610,427,650 JPY	52,825,950 JPY	1,663,253,600 JPY
09.2019	20,130	25,447,399,155 JPY	654,582,745 JPY	26,101,981,900 JPY	1,997,291,931 JPY	50,227,769 JPY	2,047,519,700 JPY
10.2019	19,025	23,991,536,284 JPY	607,412,716 JPY	24,598,949,000 JPY	1,455,862,871 JPY	47,170,029 JPY	1,503,032,900 JPY
11.2019	18,297	22,179,477,160 JPY	562,609,040 JPY	22,742,086,200 JPY	1,812,059,124 JPY	44,803,676 JPY	1,856,862,800 JPY
12.2019	17,317	20,583,328,986 JPY	520,545,514 JPY	21,103,874,500 JPY	1,596,148,174 JPY	42,063,526 JPY	1,638,211,700 JPY
01.2020	16,791	19,561,669,440 JPY	481,355,060 JPY	20,043,024,500 JPY	1,021,659,546 JPY	39,190,454 JPY	1,060,850,000 JPY
02.2020	16,389	18,585,557,776 JPY	444,041,924 JPY	19,029,599,700 JPY	976,111,664 JPY	37,313,136 JPY	1,013,424,800 JPY
03.2020	15,849	17,422,382,196 JPY	408,464,904 JPY	17,830,847,100 JPY	1,163,175,580 JPY	35,577,020 JPY	1,198,752,600 JPY
04.2020	15,085	16,713,921,129 JPY	374,852,471 JPY	17,088,773,600 JPY	708,461,067 JPY	33,612,433 JPY	742,073,500 JPY
05.2020	14,821	15,964,433,767 JPY	342,558,933 JPY	16,306,992,700 JPY	749,487,362 JPY	32,293,538 JPY	781,780,900 JPY
06.2020	14,435	14,984,160,181 JPY	311,660,719 JPY	15,295,820,900 JPY	980,273,586 JPY	30,898,214 JPY	1,011,171,800 JPY
07.2020	14,037	14,082,435,306 JPY	282,636,694 JPY	14,365,072,000 JPY	901,724,875 JPY	29,024,025 JPY	930,748,900 JPY
08.2020	13,746	13,403,501,249 JPY	255,381,251 JPY	13,658,882,500 JPY	678,934,057 JPY	27,255,443 JPY	706,189,500 JPY
09.2020	13,409	12,778,153,535 JPY	229,449,865 JPY	13,007,603,400 JPY	625,347,714 JPY	25,931,386 JPY	651,279,100 JPY
10.2020	13,016	12,266,842,869 JPY	204,761,031 JPY	12,471,603,900 JPY	511,310,666 JPY	24,688,834 JPY	535,999,500 JPY
11.2020	12,765	11,734,542,935 JPY	181,114,665 JPY	11,915,657,600 JPY	352,299,934 JPY	23,646,366 JPY	555,946,300 JPY
12.2020	12,456	10,733,152,916 JPY	158,566,084 JPY	10,891,719,000 JPY	1,001,390,019 JPY	22,548,581 JPY	1,023,938,600 JPY
01.2021	12,014	9,939,261,809 JPY	138,032,891 JPY	10,077,294,700 JPY	793,891,107 JPY	20,533,193 JPY	814,424,300 JPY
02.2021	11,464	9,086,795,329 JPY	119,014,271 JPY	9,205,809,600 JPY	852,466,480 JPY	19,018,620 JPY	871,485,100 JPY
03.2021	10,658	8,097,556,217 JPY	101,609,983 JPY	8,199,166,200 JPY	989,239,112 JPY	17,404,288 JPY	1,006,643,400 JPY
04.2021	9,521	7,512,030,186 JPY	86,050,314 JPY	7,598,080,500 JPY	585,526,031 JPY	15,559,669 JPY	601,085,700 JPY
05.2021	8,955	6,864,724,506 JPY	71,663,794 JPY	6,936,388,300 JPY	647,305,680 JPY	14,386,520 JPY	661,692,200 JPY
06.2021	8,219	6,063,014,015 JPY	58,545,785 JPY	6,121,559,800 JPY	801,710,491 JPY	13,118,009 JPY	814,828,500 JPY
07.2021	7,412	5,192,917,012 JPY	47,046,188 JPY	5,239,963,200 JPY	870,097,003 JPY	11,499,597 JPY	881,596,600 JPY
08.2021	6,593	4,410,537,952 JPY	37,220,948 JPY	4,447,758,900 JPY	782,379,060 JPY	9,825,240 JPY	792,204,300 JPY
09.2021	5,664	3,401,630,990 JPY	28,829,010 JPY	3,430,460,000 JPY	1,008,906,962 JPY	8,391,938 JPY	1,017,298,900 JPY
10.2021	4,427	2,749,951,800 JPY	22,336,500 JPY	2,772,288,300 JPY	651,679,190 JPY	6,492,510 JPY	658,171,700 JPY
11.2021	3,639	1,939,557,848 JPY	17,051,752 JPY	1,956,609,600 JPY	810,393,952 JPY	5,284,748 JPY	815,678,700 JPY
12.2021	2,603	1,568,229,682 JPY	13,230,218 JPY	1,581,459,900 JPY	371,328,166 JPY	3,821,534 JPY	375,149,700 JPY
01.2022	2,290	1,299,164,889 JPY	10,129,111 JPY	1,309,294,000 JPY	269,064,793 JPY	3,101,107 JPY	272,165,900 JPY
02.2022	2,015	1,030,087,737 JPY	7,563,363 JPY	1,037,651,100 JPY	269,077,152 JPY	2,565,748 JPY	271,642,900 JPY
03.2022	1,696	686,122,153 JPY	5,521,147 JPY	691,643,300 JPY	343,965,584 JPY	2,042,216 JPY	346,007,800 JPY
04.2022	1,210	535,572,459 JPY	4,095,041 JPY	539,667,500 JPY	150,549,694 JPY	1,426,106 JPY	151,975,800 JPY
05.2022	1,005	389,647,225 JPY	2,967,475 JPY	392,614,700 JPY	145,925,234 JPY	1,127,566 JPY	147,052,800 JPY
06.2022	780	245,904,557 JPY	2,115,043 JPY	248,019,600 JPY	143,742,668 JPY	852,432 JPY	144,595,100 JPY
07.2022	571	157,234,276 JPY	1,542,924 JPY	158,777,200 JPY	88,670,281 JPY	572,119 JPY	89,242,400 JPY
08.2022	441	99,638,773 JPY	1,158,827 JPY	100,797,600 JPY	57,595,503 JPY	384,097 JPY	57,979,600 JPY
09.2022	296	57,131,422 JPY	893,278 JPY	58,024,700 JPY	42,507,351 JPY	265,549 JPY	42,772,900 JPY
10.2022	206	49,144,631 JPY	721,769 JPY	49,866,400 JPY	7,986,791 JPY	171,509 JPY	8,158,300 JPY
11.2022	179	42,042,342 JPY	572,858 JPY	42,615,200 JPY	7,102,289 JPY	148,911 JPY	7,251,200 JPY
12.2022	148	31,395,637 JPY	444,463 JPY	31,840,100 JPY	10,646,705 JPY	128,395 JPY	10,775,100 JPY
01.2023	124	24,844,046 JPY	347,954 JPY	25,192,000 JPY	6,551,591 JPY	96,509 JPY	6,648,100 JPY
02.2023	110	20,298,196 JPY	271,104 JPY	20,569,300 JPY	4,545,850 JPY	76,850 JPY	4,622,700 JPY
03.2023	91	16,489,418 JPY	207,882 JPY	16,697,300 JPY	3,808,778 JPY	63,222 JPY	3,872,000 JPY
04.2023	75	13,257,324 JPY	156,176 JPY	13,413,500 JPY	3,232,094 JPY	51,706 JPY	3,283,800 JPY
05.2023	66	10,336,429 JPY	114,471 JPY	10,450,900 JPY	2,920,895 JPY	41,705 JPY	2,962,600 JPY
06.2023	50	7,851,174 JPY	81,826 JPY	7,933,000 JPY	2,485,255 JPY	32,645 JPY	2,517,900 JPY
07.2023	35	5,491,259 JPY	56,941 JPY	5,548,200 JPY	2,359,915 JPY	24,885 JPY	2,384,800 JPY
08.2023	32	3,605,877 JPY	39,523 JPY	3,645,400 JPY	1,885,382 JPY	17,418 JPY	1,902,800 JPY
09.2023	25	2,473,330 JPY	28,070 JPY	2,501,400 JPY	1,132,547 JPY	11,453 JPY	1,144,000 JPY
10.2023	13	1,876,309 JPY	20,191 JPY	1,896,500 JPY	597,021 JPY	7,879 JPY	604,900 JPY
11.2023	8	1,564,486 JPY	14,214 JPY	1,578,700 JPY	311,823 JPY	5,977 JPY	317,800 JPY
12.2023	6	758,169 JPY	9,231 JPY	767,400 JPY	806,317 JPY	4,983 JPY	811,300 JPY
01.2024	4	597,985 JPY	6,815 JPY	604,800 JPY	160,184 JPY	2,416 JPY	162,600 JPY
02.2024	4	437,289 JPY	4,911 JPY	442,200 JPY	160,696 JPY	1,904 JPY	162,600 JPY
03.2024	2	357,882 JPY	3,518 JPY	361,400 JPY	79,407 JPY	1,393 JPY	80,800 JPY
04.2024	2	278,222 JPY	2,378 JPY	280,600 JPY	79,660 JPY	1,140 JPY	80,800 JPY
05.2024	1	248,908 JPY	1,492 JPY	250,400 JPY	29,314 JPY	886 JPY	30,200 JPY
06.2024	1	219,501 JPY	699 JPY	220,200 JPY	29,407 JPY	793 JPY	30,200 JPY
07.2024	1	0 JPY	0 JPY	0 JPY	219,501 JPY	699 JPY	220,200 JPY

Run Out Schedule

ROS on the relevant EoP on 2018/01/10

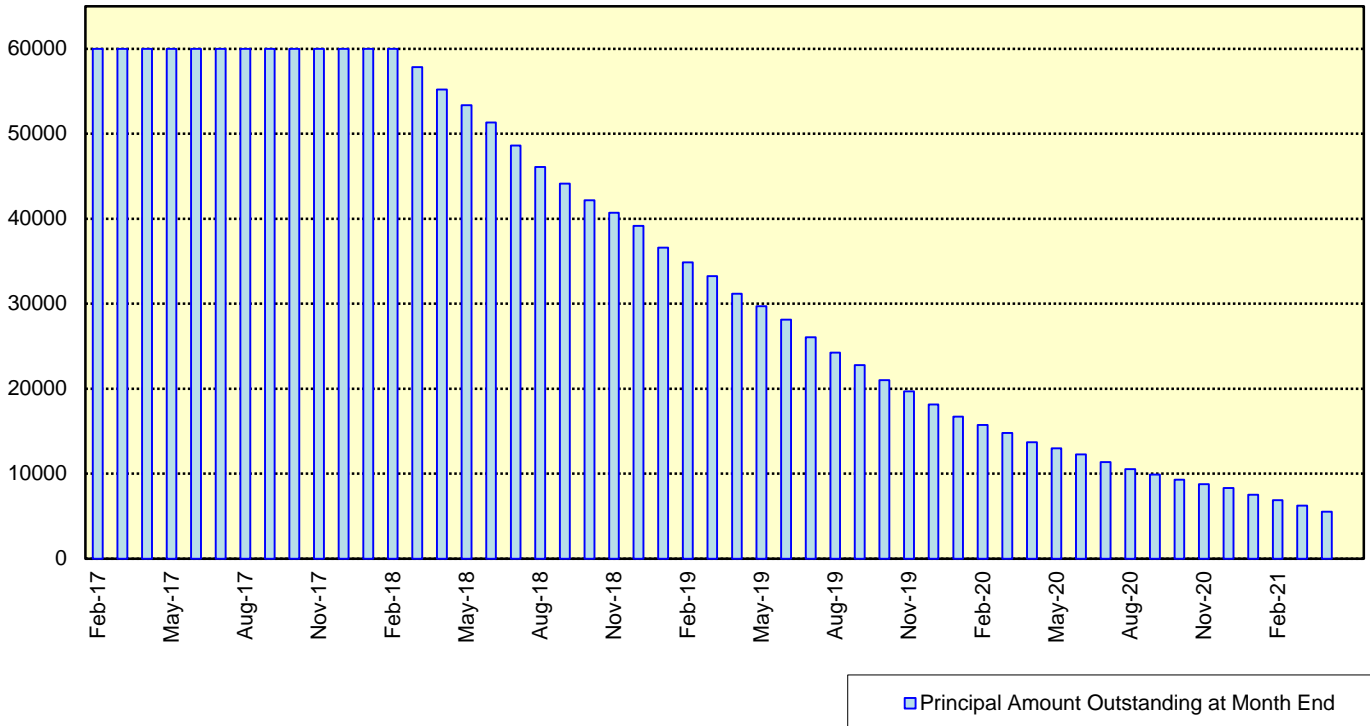
Next Payment Month	Number of Contracts	ABS Outstanding Principal	ABS Outstanding Interest	Outstanding Installment	ABS Remaining Principal	ABS Remaining Interest	ABS Remaining Installment
12.2017	35,305	65,577,016,138 JPY	2,498,704,362 JPY	68,075,720,500 JPY	0 JPY	0 JPY	0 JPY
01.2018	35,305	63,866,537,232 JPY	2,382,194,068 JPY	66,248,731,300 JPY	1,710,478,906 JPY	116,510,294 JPY	1,826,989,200 JPY
02.2018	34,934	62,262,886,759 JPY	2,268,804,841 JPY	64,531,691,600 JPY	1,603,650,473 JPY	113,389,227 JPY	1,717,039,700 JPY
03.2018	34,335	60,157,589,304 JPY	2,158,215,696 JPY	62,315,805,000 JPY	2,105,297,455 JPY	110,589,145 JPY	2,215,886,600 JPY
04.2018	33,209	58,798,570,409 JPY	2,050,960,891 JPY	60,849,531,300 JPY	1,359,018,895 JPY	107,254,805 JPY	1,466,273,700 JPY
05.2018	32,844	57,244,313,857 JPY	1,946,135,943 JPY	59,190,449,800 JPY	1,554,256,552 JPY	104,824,948 JPY	1,659,081,500 JPY
06.2018	32,271	54,966,998,446 JPY	1,843,990,354 JPY	56,810,988,800 JPY	2,277,315,411 JPY	102,145,589 JPY	2,379,461,000 JPY
07.2018	31,475	52,840,768,953 JPY	1,745,781,647 JPY	54,586,550,600 JPY	2,126,229,493 JPY	98,208,707 JPY	2,224,438,200 JPY
08.2018	30,874	51,237,544,059 JPY	1,651,416,041 JPY	52,888,960,100 JPY	1,603,224,894 JPY	94,365,606 JPY	1,697,590,500 JPY
09.2018	30,347	49,506,106,973 JPY	1,559,924,127 JPY	51,066,031,100 JPY	1,731,437,086 JPY	91,491,914 JPY	1,822,929,000 JPY
10.2018	29,511	48,185,790,431 JPY	1,471,450,469 JPY	49,657,240,900 JPY	1,320,316,542 JPY	88,473,658 JPY	1,408,790,200 JPY
11.2018	29,046	46,780,304,436 JPY	1,385,377,464 JPY	48,165,681,900 JPY	1,405,485,995 JPY	86,073,005 JPY	1,491,559,000 JPY
12.2018	28,459	44,057,034,776 JPY	1,301,812,924 JPY	45,358,847,700 JPY	2,723,269,660 JPY	83,564,540 JPY	2,806,834,200 JPY
01.2019	27,571	42,342,775,876 JPY	1,223,127,024 JPY	43,565,902,900 JPY	1,714,258,900 JPY	78,685,900 JPY	1,394,544,800 JPY
02.2019	27,009	40,700,605,787 JPY	1,147,528,713 JPY	41,848,134,500 JPY	1,642,170,089 JPY	75,598,311 JPY	1,717,768,400 JPY
03.2019	26,231	38,486,377,595 JPY	1,074,840,805 JPY	39,561,218,400 JPY	2,214,228,192 JPY	72,687,908 JPY	2,286,916,100 JPY
04.2019	24,962	36,978,139,130 JPY	1,005,966,670 JPY	37,984,105,800 JPY	1,508,238,465 JPY	68,874,135 JPY	1,577,112,600 JPY
05.2019	24,393	35,304,338,576 JPY	939,674,824 JPY	36,244,013,400 JPY	1,673,800,554 JPY	66,291,846 JPY	1,740,092,400 JPY
06.2019	23,637	32,973,417,432 JPY	876,195,468 JPY	33,849,612,900 JPY	2,330,921,144 JPY	63,479,356 JPY	2,394,400,500 JPY
07.2019	22,666	30,950,108,622 JPY	816,618,078 JPY	31,766,726,700 JPY	2,023,308,810 JPY	59,577,390 JPY	2,082,886,200 JPY
08.2019	21,944	29,287,463,994 JPY	760,478,706 JPY	30,047,942,700 JPY	1,662,644,628 JPY	56,139,372 JPY	1,718,784,000 JPY
09.2019	21,193	27,253,374,229 JPY	707,028,571 JPY	27,960,402,800 JPY	2,034,089,765 JPY	53,450,135 JPY	2,087,539,900 JPY
10.2019	20,082	25,757,377,172 JPY	656,699,228 JPY	26,414,076,400 JPY	1,495,997,057 JPY	50,329,343 JPY	1,546,326,400 JPY
11.2019	19,337	23,909,277,107 JPY	608,804,993 JPY	24,518,082,100 JPY	1,848,100,065 JPY	47,894,235 JPY	1,895,994,300 JPY
12.2019	18,354	22,208,827,010 JPY	563,708,990 JPY	22,772,536,000 JPY	1,700,450,097 JPY	45,096,003 JPY	1,745,546,100 JPY
01.2020	17,802	21,101,582,306 JPY	521,654,394 JPY	21,623,236,700 JPY	1,107,244,704 JPY	42,054,596 JPY	1,149,299,300 JPY
02.2020	17,376	20,034,830,331 JPY	481,615,469 JPY	20,516,445,800 JPY	1,066,751,975 JPY	40,038,925 JPY	1,106,790,900 JPY
03.2020	16,787	18,762,030,527 JPY	443,455,873 JPY	19,205,486,400 JPY	1,272,799,804 JPY	38,159,596 JPY	1,310,959,400 JPY
04.2020	15,969	17,982,823,286 JPY	407,421,514 JPY	18,390,244,800 JPY	779,207,241 JPY	36,034,359 JPY	815,241,600 JPY
05.2020	15,677	17,160,254,393 JPY	372,820,607 JPY	17,533,075,000 JPY	822,568,893 JPY	34,600,907 JPY	857,169,800 JPY
06.2020	15,254	16,074,383,587 JPY	339,726,513 JPY	16,414,110,100 JPY	1,085,870,806 JPY	33,094,094 JPY	1,118,964,900 JPY
07.2020	14,807	15,096,103,191 JPY	308,669,209 JPY	15,404,772,400 JPY	978,280,396 JPY	31,057,304 JPY	1,009,337,700 JPY
08.2020	14,490	14,323,754,514 JPY	279,515,486 JPY	14,603,270,000 JPY	772,348,677 JPY	29,153,723 JPY	801,502,400 JPY
09.2020	14,102	13,601,832,792 JPY	251,834,608 JPY	13,853,667,400 JPY	721,921,722 JPY	27,680,878 JPY	749,602,600 JPY
10.2020	13,646	13,022,605,073 JPY	225,541,227 JPY	13,248,146,300 JPY	579,227,719 JPY	26,293,381 JPY	605,521,100 JPY
11.2020	13,369	12,474,503,783 JPY	200,409,917 JPY	12,674,913,700 JPY	548,101,290 JPY	25,131,310 JPY	573,232,600 JPY
12.2020	13,063	11,433,998,763 JPY	176,407,237 JPY	11,610,406,000 JPY	1,040,505,020 JPY	24,002,680 JPY	1,064,507,700 JPY
01.2021	12,613	10,615,541,701 JPY	154,497,099 JPY	10,770,038,800 JPY	818,457,062 JPY	21,910,138 JPY	840,367,200 JPY
02.2021	12,064	9,738,735,252 JPY	134,149,548 JPY	9,872,884,800 JPY	876,806,449 JPY	20,347,551 JPY	897,154,000 JPY
03.2021	11,248	8,731,146,361 JPY	115,462,039 JPY	8,846,608,400 JPY	1,007,588,891 JPY	18,687,509 JPY	1,026,276,400 JPY
04.2021	10,107	8,127,487,270 JPY	98,655,330 JPY	8,226,142,600 JPY	603,659,091 JPY	16,806,709 JPY	620,465,800 JPY
05.2021	9,538	7,461,592,006 JPY	83,056,994 JPY	7,544,649,000 JPY	665,895,264 JPY	15,598,336 JPY	681,493,600 JPY
06.2021	8,790	6,629,943,132 JPY	68,761,868 JPY	6,698,705,000 JPY	831,648,874 JPY	14,295,126 JPY	845,944,000 JPY
07.2021	7,972	5,722,532,180 JPY	56,147,420 JPY	5,778,679,600 JPY	907,410,952 JPY	12,614,448 JPY	920,025,400 JPY
08.2021	7,143	4,916,012,818 JPY	45,280,482 JPY	4,961,293,300 JPY	806,519,362 JPY	10,866,938 JPY	817,386,300 JPY
09.2021	6,204	3,877,239,221 JPY	35,892,279 JPY	3,913,131,500 JPY	1,038,773,597 JPY	9,388,203 JPY	1,048,161,800 JPY
10.2021	4,939	3,209,130,711 JPY	28,462,189 JPY	3,237,592,900 JPY	668,108,510 JPY	7,430,090 JPY	675,538,600 JPY
11.2021	4,144	2,378,403,841 JPY	22,274,259 JPY	2,400,678,100 JPY	830,726,870 JPY	6,187,930 JPY	836,914,800 JPY
12.2021	3,098	1,952,055,349 JPY	17,593,651 JPY	1,969,649,000 JPY	426,348,492 JPY	4,680,608 JPY	431,029,100 JPY
01.2022	2,750	1,641,973,164 JPY	13,743,936 JPY	1,655,717,100 JPY	310,082,185 JPY	3,849,715 JPY	313,931,900 JPY
02.2022	2,441	1,331,676,953 JPY	10,503,547 JPY	1,342,180,500 JPY	310,296,211 JPY	3,240,389 JPY	313,536,600 JPY
03.2022	2,085	930,794,493 JPY	7,864,407 JPY	938,658,900 JPY	400,882,460 JPY	2,639,140 JPY	403,521,600 JPY
04.2022	1,533	750,253,235 JPY	5,943,365 JPY	756,196,600 JPY	180,541,258 JPY	1,921,042 JPY	182,462,300 JPY
05.2022	1,293	574,030,132 JPY	4,377,968 JPY	578,408,100 JPY	176,223,103 JPY	1,565,397 JPY	177,788,500 JPY
06.2022	1,029	383,597,774 JPY	3,139,926 JPY	386,737,700 JPY	190,432,358 JPY	1,238,042 JPY	191,670,400 JPY
07.2022	760	269,710,813 JPY	2,268,787 JPY	271,979,600 JPY	113,886,961 JPY	871,139 JPY	114,758,100 JPY
08.2022	604	183,899,236 JPY	1,636,864 JPY	185,536,100 JPY	85,811,577 JPY	631,923 JPY	86,443,500 JPY
09.2022	420	102,078,557 JPY	1,184,543 JPY	103,263,100 JPY	81,820,679 JPY	452,321 JPY	82,273,000 JPY
10.2022	274	57,690,255 JPY	907,845 JPY	58,598,100 JPY	44,388,302 JPY	276,698 JPY	44,665,000 JPY
11.2022	198	49,959,294 JPY	736,006 JPY	50,695,300 JPY	7,730,961 JPY	171,839 JPY	7,902,800 JPY
12.2022	167	38,022,314 JPY	586,286 JPY	38,608,600 JPY	11,936,980 JPY	149,720 JPY	12,086,700 JPY
01.2023	141	30,559,994 JPY	471,606 JPY	31,031,600 JPY	7,462,320 JPY	114,680 JPY	7,577,000 JPY
02.2023	127	25,411,081 JPY	378,919 JPY	25,790,000 JPY	5,148,913 JPY	92,687 JPY	5,241,600 JPY
03.2023	108	20,997,684 JPY	301,416 JPY	21,299,100 JPY	4,413,397 JPY	77,503 JPY	4,490,900 JPY
04.2023	88	17,285,809 JPY	236,991 JPY	17,522,800 JPY	3,711,875 JPY	64,425 JPY	3,776,300 JPY
05.2023	78	13,926,407 JPY	183,793 JPY	14,110,200 JPY	3,359,402 JPY	53,198 JPY	3,412,600 JPY
06.2023	60	10,709,918 JPY	140,782 JPY	10,850,700 JPY	3,216,489 JPY	43,011 JPY	3,259,500 JPY
07.2023	44	7,709,221 JPY	107,179 JPY	7,816,400 JPY	3,000,697 JPY	33,603 JPY	3,034,300 JPY
08.2023	40	5,581,091 JPY	82,909 JPY	5,664,000 JPY	2,128,130 JPY	24,270 JPY	2,152,400 JPY
09.2023	32	4,236,223 JPY	65,277 JPY	4,301,500 JPY	1,344,868 JPY	17,632 JPY	1,362,500 JPY
10.2023	18	3,463,485 JPY	51,815 JPY	3,515,300 JPY	772,738 JPY	13,462 JPY	786,200 JPY
11.2023	10	3,071,817 JPY	40,783 JPY	3,112,600 JPY	391,668 JPY	11,032 JPY	402,700 JPY
12.2023	8	2,035,401 JPY	30,999 JPY	2,066,400 JPY	1,036,416 JPY	9,784 JPY	1,046,200 JPY
01.2024	6	1,644,385 JPY	24,515 JPY	1,668,900 JPY	391,016 JPY	6,484 JPY	397,500 JPY
02.2024	6	1,402,122 JPY	19,278 JPY	1,421,400 JPY	242,263 JPY	5,237 JPY	247,500 JPY
03.2024	4	1,240,889 JPY	14,811 JPY	1,255,700 JPY	161,233 JPY	4,467 JPY	165,700 JPY
04.2024	4	1,079,141 JPY	10,859 JPY	1,090,000 JPY	161,748 JPY	3,952 JPY	165,700 JPY
05.2024	3	967,478 JPY	7,422 JPY	974,900 JPY	111,663 JPY	3,437 JPY	115,100 JPY
06.2024	3	855,460 JPY	4,340 JPY	859,800 JPY	112,018 JPY	3,082 JPY	115,100 JPY
07.2024	3	253,085 JPY	1,615 JPY	254,700 JPY	602,375 JPY	2,725 JPY	605,100 JPY
08.2024	2	168,991 JPY	809 JPY	169,800 JPY	84,094 JPY	806 JPY	84,900 JPY
09.2024	2	84,630 JPY	270 JPY	84,900 JPY	84,361 JPY	539 JPY	84,900 JPY
10.2024	2	0 JPY	0 JPY	0 JPY	84,630 JPY	270 JPY	84,900 JPY

Expected Amortisation

Expected Amortization to the Second Trust

JPY mil.

Assuming a Clean-Up Call at 10% of the Initial Outstanding Balance, annual prepayments of 10% and 0% defaults.



Distribution by Sub-Servicer

Sub-Servicer	Number of Loans	Percentage of Loans	Outstanding Principal Balance	Percentage of Balance
Cedyna	20,808	58.94 %	39,484,367,621 JPY	60.21 %
Jaccs	14,497	41.06 %	26,092,648,517 JPY	39.79 %
Total	35,305	100.00 %	65,577,016,138 JPY	100.00 %

Distribution by Brand

Make	Number of Loans	Percentage of Loans	Outstanding Discounted Principal Balance	Percentage of Balance
VW	22,606	64.03 %	34,691,012,248 JPY	52.90 %
Audi	12,660	35.86 %	30,750,071,888 JPY	46.89 %
Bentley	17	0.05 %	93,033,359 JPY	0.14 %
Lamborghini	5	0.01 %	25,077,602 JPY	0.04 %
Other	17	0.05 %	17,821,041 JPY	0.03 %
Total	35,305	100.00 %	65,577,016,138 JPY	100.00 %

Distribution by New and Used
Distribution by New and Used

New or Used	Number of Loans	Percentage of Loans	Outstanding Discounted Principal Balance	Percentage of Balance
New	23,474	66.49 %	50,828,957,189 JPY	77.51 %
Used	9,066	25.68 %	13,417,514,531 JPY	20.46 %
Used (Prolonged)	2,765	7.83 %	1,330,544,418 JPY	2.03 %
Total	35,305	100.00 %	65,577,016,138 JPY	100.00 %

Distribution by Brand New and Used

New or Used	Number of Loans	Percentage of Loans	Outstanding Discounted Principal Balance	Percentage of Balance
VW New	15,587	44.15 %	28,454,635,017 JPY	43.39 %
VW Used	4,907	13.90 %	5,521,614,071 JPY	8.42 %
VW Used (Prolonged)	2,112	5.98 %	714,763,160 JPY	1.09 %
Audi New	7,874	22.30 %	22,306,294,837 JPY	34.02 %
Audi Used	4,133	11.71 %	7,827,995,793 JPY	11.94 %
Audi Used (Prolonged)	653	1.85 %	615,781,258 JPY	0.94 %
Other	39	0.11 %	135,932,002 JPY	0.21 %
Total	35,305	100.00 %	65,577,016,138 JPY	100.00 %

Distribution by Product Type

Loan Type List

Loan Type	Description
100	Volkswagen Owner's Plan
100	Audi Owner's Plan
100	Lamborghini Auto Loan
100	Bentley Auto Loan
101	Twin Loan
105	Refinanced Volkswagen Solutions
106	Refinanced Volkswagen Das Welt Auto with refinance option *
106	Refinanced Audi S-Loan/ S-Loan Plus
106	Refinanced Lamborghini Hyper Premium Plan
106	Refinanced Bentley My Flying B
140	Volkswagen Solutions
150	Volkswagen Das Welt Auto with refinance option **
150	Audi S-Loan
150	Lamborghini Hyper Premium Plan
150	Bentley My Flying B
151	Audi S-Loan Plus

(*) The name was changed from "Refinanced Volkswagen GUC with refinance option" effective from 1 February 2012.

No other changes were made to auto loan agreements.

(**) The name was changed from "Volkswagen GUC with refinance option" effective from 1 February 2012.

No other changes were made to auto loan agreements.

Product Type

Loan Type	Number of Loans	Percentage of Loans	Outstanding Discounted Principal Balance	Percentage of Balance
100	4,939	13.99 %	6,249,991,458 JPY	9.53 %
101	0	0.00 %	0 JPY	0.00 %
105	2,030	5.75 %	697,221,941 JPY	1.06 %
106	735	2.08 %	633,322,477 JPY	0.97 %
140-VFJ	2,307	6.53 %	4,143,390,634 JPY	6.32 %
140-Dealer	12,095	34.26 %	22,793,636,844 JPY	34.76 %
150	12,502	35.41 %	29,075,244,463 JPY	44.34 %
151	697	1.97 %	1,984,208,321 JPY	3.03 %
Total	35,305	100.00 %	65,577,016,138 JPY	100.00 %

Credit Type

Credit Type	Number of Loans	Percentage of Loans	Outstanding Discounted Principal Balance	Percentage of Balance
Balloon Type Loan	27,601	78.18 %	57,996,480,262 JPY	88.44 %
Equal Instalment Type Loan	7,704	21.82 %	7,580,535,876 JPY	11.56 %
Total	35,305	100.00 %	65,577,016,138 JPY	100.00 %

Distribution by RV

Loan Type	Number of Loans	Percentage of Balance	Outstanding Discounted Principal Balance
100/101/105/106	7,704	11.56 %	7,580,535,876 JPY
140-VFJ (excl. balloon)		3.37 %	2,207,947,929 JPY
140-VFJ (balloon)		2.95 %	1,935,442,705 JPY
140-VFJ	2,307	6.32 %	4,143,390,634 JPY
140-Dealer (excl. balloon)		18.70 %	12,260,203,619 JPY
140-Dealer (balloon)		16.06 %	10,533,433,225 JPY
140-Dealer	12,095	34.76 %	22,793,636,844 JPY
150 (excl. balloon)		20.93 %	13,722,815,595 JPY
150 (balloon)		23.41 %	15,352,428,868 JPY
150	12,502	44.34 %	29,075,244,463 JPY
151 (excl. balloon)		0.96 %	631,301,188 JPY
151 (balloon)		2.06 %	1,352,907,133 JPY
151	697	3.03 %	1,984,208,321 JPY
Total	35,305	100.00 %	65,577,016,138 JPY

Type of Payment Portion	Percentage of Balance	Outstanding Discounted Principal Balance
Monthly Installment Portion	55.51 %	36,402,804,207 JPY
Balloon Portion	44.49 %	29,174,211,931 JPY
Total	100.00 %	65,577,016,138 JPY

Distribution by Brand New and Used
Audi

New or Used	Number of Loans	Percentage of Loans	Outstanding Discounted Principal Balance	Percentage of Balance
New	7,874	62.20 %	22,306,294,837 JPY	72.54 %
Used	4,786	37.80 %	8,443,777,051 JPY	27.46 %
Total	12,660	100.00 %	30,750,071,888 JPY	100.00 %

Bentley

New or Used	Number of Loans	Percentage of Loans	Outstanding Discounted Principal Balance	Percentage of Balance
New	10	58.82 %	56,330,792 JPY	60.55 %
Used	7	41.18 %	36,702,567 JPY	39.45 %
Total	17	100.00 %	93,033,359 JPY	100.00 %

Lamborghini

New or Used	Number of Loans	Percentage of Loans	Outstanding Discounted Principal Balance	Percentage of Balance
New	3	60.00 %	11,696,543 JPY	46.64 %
Used	2	40.00 %	13,381,059 JPY	53.36 %
Total	5	100.00 %	25,077,602 JPY	100.00 %

VW

New or Used	Number of Loans	Percentage of Loans	Outstanding Discounted Principal Balance	Percentage of Balance
New	15,587	68.95 %	28,454,635,017 JPY	82.02 %
Used	7,019	31.05 %	6,236,377,231 JPY	17.98 %
Total	22,606	100.00 %	34,691,012,248 JPY	100.00 %

OTHER

New or Used	Number of Loans	Percentage of Loans	Outstanding Discounted Principal Balance	Percentage of Balance
New	0	0.00 %	0 JPY	0.00 %
Used	17	100.00 %	17,821,041 JPY	100.00 %
Total	17	100.00 %	17,821,041 JPY	100.00 %

Distribution by Customer Type

Customer Type

Customer Type	Number of Loans	Percentage of Loans	Outstanding Discounted Principal Balance	Percentage of Balance
Retail	31,944	90.48 %	56,368,102,758 JPY	85.96 %
Corporate	3,361	9.52 %	9,208,913,380 JPY	14.04 %
Total	35,305	100.00 %	65,577,016,138 JPY	100.00 %

Distribution by Outstanding Discounted Principal Balance

Outstanding Discounted Principal Balance	Number of Loans	Percentage of Loans	Outstanding Discounted Principal Balance	Percentage of Balance
<= 500,000 JPY	3,518	9.96 %	901,299,608 JPY	1.37 %
500,001 JPY - 1,000,000 JPY	4,833	13.69 %	3,698,225,154 JPY	5.64 %
1,000,001 JPY - 1,500,000 JPY	6,906	19.56 %	8,671,346,320 JPY	13.22 %
1,500,001 JPY - 2,000,000 JPY	6,651	18.84 %	11,568,688,334 JPY	17.64 %
2,000,001 JPY - 2,500,000 JPY	5,245	14.86 %	11,733,357,710 JPY	17.89 %
2,500,001 JPY - 3,000,000 JPY	3,264	9.25 %	8,892,271,630 JPY	13.56 %
3,000,001 JPY - 3,500,000 JPY	1,818	5.15 %	5,874,307,504 JPY	8.96 %
3,500,001 JPY - 4,000,000 JPY	1,057	2.99 %	3,950,339,261 JPY	6.02 %
4,000,001 JPY - 4,500,000 JPY	725	2.05 %	3,068,804,841 JPY	4.68 %
4,500,001 JPY - 5,000,000 JPY	475	1.35 %	2,246,950,667 JPY	3.43 %
5,000,001 JPY - 6,000,000 JPY	471	1.33 %	2,567,874,322 JPY	3.92 %
6,000,001 JPY - 7,000,000 JPY	197	0.56 %	1,267,839,513 JPY	1.93 %
7,000,001 JPY - 8,000,000 JPY	98	0.28 %	728,669,053 JPY	1.11 %
8,000,001 JPY - 9,000,000 JPY	36	0.10 %	304,053,814 JPY	0.46 %
9,000,001 JPY - 10,000,000 JPY	11	0.03 %	102,988,407 JPY	0.16 %
>= 10,000,001 JPY	0	0.00 %	0 JPY	0.00 %
Total	35,305	100.00 %	65,577,016,138 JPY	100.00 %

Statistics

Minimum Outstanding Discounted Principal Balance	9,671 JPY
Maximum Outstanding Discounted Principal Balance	9,933,770 JPY
Average Outstanding Discounted Principal Balance	1,857,443 JPY

Distribution by Original Principal Amount

Original Principal Balance	Number of Loans	Percentage of Loans	Outstanding Discounted Principal Balance	Percentage of Balance
<= 500,000 JPY	493	1.40 %	87,345,214 JPY	0.13 %
500,001 JPY - 1,000,000 JPY	2,863	8.11 %	1,143,230,865 JPY	1.74 %
1,000,001 JPY - 1,500,000 JPY	3,854	10.92 %	3,184,043,542 JPY	4.86 %
1,500,001 JPY - 2,000,000 JPY	5,629	15.94 %	6,822,801,468 JPY	10.40 %
2,000,001 JPY - 2,500,000 JPY	5,781	16.37 %	9,103,593,988 JPY	13.88 %
2,500,001 JPY - 3,000,000 JPY	5,514	15.62 %	10,694,010,138 JPY	16.31 %
3,000,001 JPY - 3,500,000 JPY	3,833	10.86 %	8,843,279,173 JPY	13.49 %
3,500,001 JPY - 4,000,000 JPY	2,535	7.18 %	6,760,283,600 JPY	10.31 %
4,000,001 JPY - 4,500,000 JPY	1,409	3.99 %	4,334,712,735 JPY	6.61 %
4,500,001 JPY - 5,000,000 JPY	1,060	3.00 %	3,645,947,277 JPY	5.56 %
5,000,001 JPY - 6,000,000 JPY	1,103	3.12 %	4,374,802,629 JPY	6.67 %
6,000,001 JPY - 7,000,000 JPY	606	1.72 %	2,822,121,811 JPY	4.30 %
7,000,001 JPY - 8,000,000 JPY	279	0.79 %	1,508,665,844 JPY	2.30 %
8,000,001 JPY - 9,000,000 JPY	151	0.43 %	925,079,727 JPY	1.41 %
9,000,001 JPY - 10,000,000 JPY	83	0.24 %	588,476,539 JPY	0.90 %
>= 10,000,001 JPY	112	0.32 %	738,621,588 JPY	1.13 %
Total	35,305	100.00 %	65,577,016,138 JPY	100.00 %

Statistics

Minimum Original Principal Balance	90,000 JPY
Maximum Original Principal Balance	25,000,000 JPY
Average Original Principal Balance	2,683,756 JPY

Distribution by Interest Rate paid by the Obligor

Interest Rate paid by the Obligor	Number of Loans	Percentage of Loans	Outstanding Discounted Principal Balance	Percentage of Balance
< 0.900 %	1,797	5.09 %	3,390,363,325 JPY	5.17 %
0.900 % < 1.500 %	6,410	18.16 %	14,929,279,280 JPY	22.77 %
1.500 % < 2.000 %	12,102	34.28 %	25,063,790,641 JPY	38.22 %
2.000 % < 2.500 %	320	0.91 %	562,465,613 JPY	0.86 %
2.500 % < 3.000 %	7,373	20.88 %	13,383,014,600 JPY	20.41 %
3.000 % < 3.500 %	1,278	3.62 %	1,057,359,880 JPY	1.61 %
3.500 % < 4.000 %	5,985	16.95 %	7,131,556,688 JPY	10.88 %
4.000 % < 4.500 %	40	0.11 %	59,186,111 JPY	0.09 %
4.500 % < 5.000 %	0	0.00 %	0 JPY	0.00 %
5.000 % or more	0	0.00 %	0 JPY	0.00 %
Total	35,305	100.00 %	65,577,016,138 JPY	100.00 %

Statistics	
Minimum Interest Rate	0.00 %
Maximum Interest Rate	4.49 %
Weighted Average Interest Rate	2.05 %

Distribution by Original Term

Length of Original Term (months)	Number of Loans	Percentage of Loans	Outstanding Discounted Principal Balance	Percentage of Balance
6 - 12	64	0.18 %	22,021,397 JPY	0.03 %
13 - 18	127	0.36 %	24,136,610 JPY	0.04 %
19 - 24	2,008	5.69 %	845,120,314 JPY	1.29 %
25 - 30	111	0.31 %	63,037,890 JPY	0.10 %
31 - 36	14,086	39.90 %	28,147,243,443 JPY	42.92 %
37 - 42	86	0.24 %	70,438,333 JPY	0.11 %
43 - 48	1,772	5.02 %	2,354,650,879 JPY	3.59 %
49 - 54	32	0.09 %	39,734,733 JPY	0.06 %
55 - 60	16,080	45.55 %	32,117,861,285 JPY	48.98 %
61 - 66	23	0.07 %	35,729,817 JPY	0.05 %
67 - 72	726	2.06 %	1,349,092,049 JPY	2.06 %
73 - 84	190	0.54 %	507,949,388 JPY	0.77 %
Total	35,305	100.00 %	65,577,016,138 JPY	100.00 %

Statistics	
Minimum Original Term in months	6
Maximum Original Term in months	84
Weighted Average Original Term in months	49.15

Distribution by Remaining Term

Length of Remaining Term (months)	Number of Loans	Percentage of Loans	Outstanding Discounted Principal Balance	Percentage of Balance
<= 12	7,734	21.91 %	8,274,974,556 JPY	12.62 %
13 - 18	4,905	13.89 %	8,650,534,835 JPY	13.19 %
19 - 24	4,864	13.78 %	10,245,812,213 JPY	15.62 %
25 - 30	2,995	8.48 %	5,962,192,095 JPY	9.09 %
31 - 36	2,194	6.21 %	4,174,295,571 JPY	6.37 %
37 - 42	4,641	13.15 %	9,417,945,937 JPY	14.36 %
43 - 48	5,222	14.79 %	11,907,764,458 JPY	18.16 %
49 - 54	1,990	5.64 %	4,932,350,106 JPY	7.52 %
55 - 60	619	1.75 %	1,607,158,971 JPY	2.45 %
61 - 66	97	0.27 %	262,303,505 JPY	0.40 %
67 - 72	38	0.11 %	117,771,462 JPY	0.18 %
73 - 84	6	0.02 %	23,912,429 JPY	0.04 %
Total	35,305	100.00 %	65,577,016,138 JPY	100.00 %

Statistics	
Minimum Remaining Term in months	1
Maximum Remaining Term in months	82
Weighted Average Remaining Term in months	30.55

Distribution by Seasoning

Seasoning (months)	Number of Loans	Percentage of Loans	Outstanding Discounted Principal Balance	Percentage of Balance
<= 12	5,658	16.03 %	13,203,853,188 JPY	20.13 %
13 - 18	11,807	33.44 %	24,447,042,443 JPY	37.28 %
19 - 24	8,711	24.67 %	15,873,884,220 JPY	24.21 %
25 - 30	3,509	9.94 %	5,609,470,288 JPY	8.55 %
31 - 36	3,074	8.71 %	3,922,883,041 JPY	5.98 %
37 - 42	795	2.25 %	936,465,904 JPY	1.43 %
43 - 48	960	2.72 %	989,618,394 JPY	1.51 %
49 - 54	494	1.40 %	427,978,913 JPY	0.65 %
55 - 60	278	0.79 %	160,453,533 JPY	0.24 %
61 - 66	7	0.02 %	3,615,891 JPY	0.01 %
67 - 72	12	0.03 %	1,750,323 JPY	0.00 %
73 - 84	0	0.00 %	0 JPY	0.00 %
Total	35,305	100.00 %	65,577,016,138 JPY	100.00 %

Statistics	
Minimum Seasoning in months	2
Maximum Seasoning in months	71
Weighted Average Seasoning in months	18.61

Distribution by Type of Car

Type of Car

Type of Car	Number of Loans	Percentage of Loans	Outstanding Discounted Principal Balance	Percentage of Balance
New	23,474	66.49 %	50,828,957,189 JPY	77.51 %
Used	11,831	33.51 %	14,748,058,949 JPY	22.49 %
Total	35,305	100.00 %	65,577,016,138 JPY	100.00 %

Type of Car: Only Balloon Loans

Type of Car	Number of Loans	Percentage of Loans	Outstanding Discounted Principal Balance	Percentage of Balance
New	21,967	79.59 %	48,718,217,023 JPY	84.00 %
Used	5,634	20.41 %	9,278,263,239 JPY	16.00 %
Total	27,601	100.00 %	57,996,480,262 JPY	100.00 %

Type of Car: Only Equal Instalment Loans

Type of Car	Number of Loans	Percentage of Loans	Outstanding Discounted Principal Balance	Percentage of Balance
New	1,507	19.56 %	2,110,740,166 JPY	27.84 %
Used	6,197	80.44 %	5,469,795,710 JPY	72.16 %
Total	7,704	100.00 %	7,580,535,876 JPY	100.00 %

Distribution by Brand and Model

Make	Model	Number of Loans	Percentage of Loans	Outstanding Discounted Principal Balance	Percentage of Balance
Audi	A1	1,219	3.45 %	1,679,883,998 JPY	2.56 %
	A3	3,160	8.95 %	5,793,077,980 JPY	8.83 %
	A4	2,637	7.47 %	6,535,005,828 JPY	9.97 %
	A5	565	1.60 %	1,475,454,159 JPY	2.25 %
	A6	812	2.30 %	2,286,826,267 JPY	3.49 %
	A7	308	0.87 %	1,179,056,898 JPY	1.80 %
	A8	88	0.25 %	371,797,921 JPY	0.57 %
	S1	123	0.35 %	277,434,566 JPY	0.42 %
	S3	420	1.19 %	1,189,204,671 JPY	1.81 %
	S4	107	0.30 %	338,152,741 JPY	0.52 %
	S5	68	0.19 %	243,090,928 JPY	0.37 %
	S6	41	0.12 %	207,705,385 JPY	0.32 %
	S7	30	0.08 %	130,777,494 JPY	0.20 %
	S8	17	0.05 %	90,173,867 JPY	0.14 %
	RS3	51	0.14 %	212,972,330 JPY	0.32 %
	RS4	17	0.05 %	67,108,580 JPY	0.10 %
	RS5	17	0.05 %	74,261,004 JPY	0.11 %
	RS6	15	0.04 %	81,077,797 JPY	0.12 %
	RS7	12	0.03 %	75,309,053 JPY	0.11 %
	Q2	52	0.15 %	173,927,917 JPY	0.27 %
	Q3	1,072	3.04 %	2,425,162,365 JPY	3.70 %
	Q5	680	1.93 %	2,016,687,903 JPY	3.08 %
	Q7	209	0.59 %	1,077,526,813 JPY	1.64 %
	RSQ3	26	0.07 %	118,437,645 JPY	0.18 %
	TT	901	2.55 %	2,559,478,679 JPY	3.90 %
	R8	13	0.04 %	70,479,099 JPY	0.11 %
AUDI OTHERS	0	0.00 %	0 JPY	0.00 %	
	Subtotal	12,660	35.86 %	30,750,071,888 JPY	46.89 %
Bentley	ARNAGE	0	0.00 %	0 JPY	0.00 %
	AZURE	0	0.00 %	0 JPY	0.00 %
	BENTAYGA	1	0.00 %	8,218,213 JPY	0.01 %
	CONTINENTAL	14	0.04 %	74,777,761 JPY	0.11 %
	FLYING SPUR	1	0.00 %	3,980,305 JPY	0.01 %
	MULSANNE	1	0.00 %	6,057,080 JPY	0.01 %
	BENTLEY OTHERS	0	0.00 %	0 JPY	0.00 %
		Subtotal	17	0.05 %	93,033,359 JPY
Lamborghini	AVENTADOR	2	0.01 %	7,295,232 JPY	0.01 %
	DIABLO	0	0.00 %	0 JPY	0.00 %
	GALLARDO	2	0.01 %	13,706,614 JPY	0.02 %
	HURACÁN	1	0.00 %	4,075,756 JPY	0.01 %
	MULCIELAGO	0	0.00 %	0 JPY	0.00 %
	LAMBORGHINI OTHERS	0	0.00 %	0 JPY	0.00 %
		Subtotal	5	0.01 %	25,077,602 JPY
VW	BETLE	2,288	6.48 %	3,398,952,244 JPY	5.18 %
	BORA	0	0.00 %	0 JPY	0.00 %
	EOS	0	0.00 %	0 JPY	0.00 %
	GOLF	8,846	25.06 %	14,263,608,217 JPY	21.75 %
	JETTA	14	0.04 %	4,456,660 JPY	0.01 %
	LUPO	1	0.00 %	1,379,383 JPY	0.00 %
	PASSAT	1,900	5.38 %	3,830,708,655 JPY	5.84 %
	POLO	4,770	13.51 %	5,831,887,128 JPY	8.89 %
	SCIROCCO	53	0.15 %	54,538,201 JPY	0.08 %
	SHARAN	773	2.19 %	1,479,771,982 JPY	2.26 %
	TIGUAN	706	2.00 %	1,343,667,461 JPY	2.05 %
	TOUAREG	86	0.24 %	201,451,057 JPY	0.31 %
	TOURAN	1,641	4.65 %	3,039,108,377 JPY	4.63 %
	UP	1,528	4.33 %	1,241,482,883 JPY	1.89 %
	VENTO	0	0.00 %	0 JPY	0.00 %
	VW OTHERS	0	0.00 %	0 JPY	0.00 %
	Subtotal	22,606	64.03 %	34,691,012,248 JPY	52.90 %
Non VW Group Vehicles		17	0.05 %	17,821,041 JPY	0.03 %
	Subtotal	17	0.05 %	17,821,041 JPY	0.03 %
Total		35,305	100.00 %	65,577,016,138 JPY	100.00 %

Geographic Distribution by Prefecture

Prefecture	Number of Loans	Percentage of Loans	Outstanding Discounted Principal Balance	Percentage of Balance
Tokyo	5,389	15.26 %	11,495,368,123 JPY	17.53 %
Kanagawa	3,469	9.83 %	6,629,851,765 JPY	10.11 %
Aichi	2,511	7.11 %	4,483,273,419 JPY	6.84 %
Saitama	2,314	6.55 %	4,307,314,059 JPY	6.57 %
Osaka	2,098	5.94 %	4,129,192,570 JPY	6.30 %
Chiba	1,570	4.45 %	2,821,899,234 JPY	4.30 %
Fukuoka	1,496	4.24 %	2,790,703,889 JPY	4.26 %
Hokkaido	1,310	3.71 %	2,641,319,696 JPY	4.03 %
Hyogo	1,406	3.98 %	2,587,412,349 JPY	3.95 %
Shizuoka	1,046	2.96 %	1,911,499,255 JPY	2.91 %
Ibaraki	1,081	3.06 %	1,894,424,862 JPY	2.89 %
Hiroshima	817	2.31 %	1,385,816,026 JPY	2.11 %
Tochigi	746	2.11 %	1,374,024,826 JPY	2.10 %
Kyoto	683	1.93 %	1,232,281,428 JPY	1.88 %
Gunma	704	1.99 %	1,117,299,655 JPY	1.70 %
Miyagi	618	1.75 %	1,082,926,548 JPY	1.65 %
Gifu	545	1.54 %	921,764,261 JPY	1.41 %
Okayama	528	1.50 %	916,033,037 JPY	1.40 %
Nagano	542	1.54 %	897,710,519 JPY	1.37 %
Mie	459	1.30 %	741,302,564 JPY	1.13 %
Fukushima	389	1.10 %	638,286,374 JPY	0.97 %
Niigata	393	1.11 %	614,339,162 JPY	0.94 %
Yamaguchi	357	1.01 %	612,761,904 JPY	0.93 %
Nara	315	0.89 %	577,670,854 JPY	0.88 %
Oita	332	0.94 %	571,072,911 JPY	0.87 %
Ishikawa	301	0.85 %	495,980,418 JPY	0.76 %
Shiga	288	0.82 %	482,673,214 JPY	0.74 %
Kumamoto	292	0.83 %	480,987,310 JPY	0.73 %
Yamanashi	255	0.72 %	468,611,967 JPY	0.71 %
Kagoshima	257	0.73 %	453,566,684 JPY	0.69 %
Toyama	272	0.77 %	451,967,801 JPY	0.69 %
Fukui	225	0.64 %	429,923,354 JPY	0.66 %
Wakayama	219	0.62 %	416,019,068 JPY	0.63 %
Yamagata	255	0.72 %	401,216,356 JPY	0.61 %
Kagawa	207	0.59 %	337,850,015 JPY	0.52 %
Nagasaki	178	0.50 %	324,931,279 JPY	0.50 %
Iwate	172	0.49 %	311,441,072 JPY	0.47 %
Tokushima	173	0.49 %	289,131,023 JPY	0.44 %
Miyazaki	162	0.46 %	284,755,991 JPY	0.43 %
Saga	149	0.42 %	269,548,156 JPY	0.41 %
Ehime	155	0.44 %	239,424,441 JPY	0.37 %
Shimane	119	0.34 %	228,658,985 JPY	0.35 %
Aomori	138	0.39 %	218,636,702 JPY	0.33 %
Akita	117	0.33 %	203,680,509 JPY	0.31 %
Tottori	118	0.33 %	193,700,866 JPY	0.30 %
Kouchi	81	0.23 %	135,278,939 JPY	0.21 %
Okinawa	54	0.15 %	83,482,698 JPY	0.13 %
Total	35,305	100.00 %	65,577,016,138 JPY	100.00 %

Distribution by Obligor Concentration
Distribution of Loan Contracts and Vehicles per Obligor

Contract Concentration	Number of Customers	Percentage of Customers	Number of Loans	Percentage of Loans	Outstanding Discounted Principal Balance	Percentage of Balance
1	33,945	96.71 %	33,945	96.15 %	62,534,717,868 JPY	95.36 %
2	1,064	3.03 %	1,246	3.53 %	2,739,502,899 JPY	4.18 %
3	75	0.21 %	91	0.26 %	248,883,653 JPY	0.38 %
4	8	0.02 %	16	0.05 %	30,188,307 JPY	0.05 %
5	3	0.01 %	4	0.01 %	14,177,022 JPY	0.02 %
6 - 10	3	0.01 %	3	0.01 %	9,546,389 JPY	0.01 %
11 or more	0	0.00 %	0	0.00 %	0 JPY	0.00 %
Total	35,098	100.00 %	35,305	100.00 %	65,577,016,138 JPY	100.00 %

Top 20 Obligor

Number	Number of Contracts	Outstanding Discounted Principal Balance	Percentage of Balance
1	2	13,961,998 JPY	0.02 %
2	2	12,234,406 JPY	0.02 %
3	2	12,174,889 JPY	0.02 %
4	3	11,984,468 JPY	0.02 %
5	2	11,099,122 JPY	0.02 %
6	2	11,020,040 JPY	0.02 %
7	2	9,971,191 JPY	0.02 %
8	1	9,933,770 JPY	0.02 %
9	2	9,786,298 JPY	0.01 %
10	1	9,601,353 JPY	0.01 %
11	1	9,581,620 JPY	0.01 %
12	2	9,420,662 JPY	0.01 %
13	1	9,382,948 JPY	0.01 %
14	1	9,323,161 JPY	0.01 %
15	1	9,278,707 JPY	0.01 %
16	1	9,259,108 JPY	0.01 %
17	1	9,239,875 JPY	0.01 %
18	1	9,183,457 JPY	0.01 %
19	1	9,103,829 JPY	0.01 %
20	1	9,100,579 JPY	0.01 %
Total 1 -20	30	204,641,481 JPY	0.31 %

Remarks:

Figures above are calculated based on each of the Sub-Servicers respectively and not across both of the Sub-Servicers.

Distribution by Contract Start Month

Origination Month	Number of Loans	Percentage of Loans	Outstanding Discounted Principal Balance	Percentage of Balance
01.2012	3	0.01 %	115,257 JPY	0.00 %
02.2012	2	0.01 %	242,035 JPY	0.00 %
03.2012	2	0.01 %	250,169 JPY	0.00 %
04.2012	3	0.01 %	760,629 JPY	0.00 %
05.2012	2	0.01 %	382,233 JPY	0.00 %
06.2012	1	0.00 %	228,430 JPY	0.00 %
07.2012	1	0.00 %	279,147 JPY	0.00 %
08.2012	1	0.00 %	298,138 JPY	0.00 %
09.2012	3	0.01 %	2,167,320 JPY	0.00 %
10.2012	0	0.00 %	0 JPY	0.00 %
11.2012	1	0.00 %	642,856 JPY	0.00 %
12.2012	6	0.02 %	3,818,485 JPY	0.01 %
01.2013	35	0.10 %	18,585,218 JPY	0.03 %
02.2013	36	0.10 %	12,694,007 JPY	0.02 %
03.2013	67	0.19 %	36,980,579 JPY	0.06 %
04.2013	57	0.16 %	37,719,257 JPY	0.06 %
05.2013	77	0.22 %	50,655,987 JPY	0.08 %
06.2013	98	0.28 %	71,133,668 JPY	0.11 %
07.2013	73	0.21 %	53,322,181 JPY	0.08 %
08.2013	53	0.15 %	51,555,316 JPY	0.08 %
09.2013	95	0.27 %	76,088,430 JPY	0.12 %
10.2013	79	0.22 %	78,761,426 JPY	0.12 %
11.2013	96	0.27 %	97,117,892 JPY	0.15 %
12.2013	146	0.41 %	158,637,657 JPY	0.24 %
01.2014	115	0.33 %	113,415,834 JPY	0.17 %
02.2014	195	0.55 %	213,540,218 JPY	0.33 %
03.2014	299	0.85 %	299,345,570 JPY	0.46 %
04.2014	87	0.25 %	86,424,338 JPY	0.13 %
05.2014	118	0.33 %	118,254,777 JPY	0.18 %
06.2014	170	0.48 %	183,413,015 JPY	0.28 %
07.2014	125	0.35 %	137,267,942 JPY	0.21 %
08.2014	97	0.27 %	124,157,887 JPY	0.19 %
09.2014	166	0.47 %	204,012,383 JPY	0.31 %
10.2014	112	0.32 %	129,326,673 JPY	0.20 %
11.2014	125	0.35 %	158,288,004 JPY	0.24 %
12.2014	196	0.56 %	271,597,036 JPY	0.41 %
01.2015	359	1.02 %	401,952,863 JPY	0.61 %
02.2015	590	1.67 %	737,069,514 JPY	1.12 %
03.2015	1,061	3.01 %	1,346,046,756 JPY	2.05 %
04.2015	311	0.88 %	396,320,301 JPY	0.60 %
05.2015	557	1.58 %	769,896,571 JPY	1.17 %
06.2015	675	1.91 %	1,033,347,149 JPY	1.58 %
07.2015	529	1.50 %	760,550,955 JPY	1.16 %
08.2015	552	1.56 %	843,393,276 JPY	1.29 %
09.2015	799	2.26 %	1,337,535,278 JPY	2.04 %
10.2015	444	1.26 %	731,223,358 JPY	1.12 %
11.2015	510	1.44 %	903,420,272 JPY	1.38 %
12.2015	1,113	3.15 %	1,975,724,965 JPY	3.01 %
01.2016	1,046	2.96 %	1,835,740,296 JPY	2.80 %
02.2016	1,537	4.35 %	2,692,810,363 JPY	4.11 %
03.2016	2,342	6.63 %	4,211,395,394 JPY	6.42 %
04.2016	1,144	3.24 %	2,239,600,277 JPY	3.42 %
05.2016	1,529	4.33 %	2,918,612,925 JPY	4.45 %
06.2016	1,850	5.24 %	3,664,622,991 JPY	5.59 %
07.2016	1,646	4.66 %	3,225,281,267 JPY	4.92 %
08.2016	1,865	5.28 %	3,830,098,958 JPY	5.84 %
09.2016	2,546	7.21 %	5,303,781,158 JPY	8.09 %
10.2016	1,648	4.67 %	3,501,492,975 JPY	5.34 %
11.2016	2,252	6.38 %	4,921,765,094 JPY	7.51 %
12.2016	806	2.28 %	1,749,190,973 JPY	2.67 %
01.2017	638	1.81 %	1,436,999,415 JPY	2.19 %
02.2017	764	2.16 %	1,779,699,485 JPY	2.71 %
03.2017	1,135	3.21 %	2,595,647,619 JPY	3.96 %
04.2017	434	1.23 %	1,035,325,099 JPY	1.58 %
05.2017	481	1.36 %	1,164,457,208 JPY	1.78 %
06.2017	528	1.50 %	1,285,462,988 JPY	1.96 %
07.2017	273	0.77 %	618,866,370 JPY	0.94 %
08.2017	250	0.71 %	614,325,685 JPY	0.94 %
09.2017	242	0.69 %	647,375,221 JPY	0.99 %
10.2017	107	0.30 %	276,503,125 JPY	0.42 %
11.2017	0	0.00 %	0 JPY	0.00 %
12.2017	0	0.00 %	0 JPY	0.00 %
Total	35,305	100.00 %	65,577,016,138 JPY	100.00 %

Distribution by Contract End Month

Maturity Month	Number of Loans	Percentage of Loans	Outstanding Discounted Principal Balance	Percentage of Balance
01.2018	371	1.05 %	252,329,998 JPY	0.38 %
02.2018	599	1.70 %	493,676,694 JPY	0.75 %
03.2018	1,126	3.19 %	1,086,873,439 JPY	1.66 %
04.2018	365	1.03 %	312,383,961 JPY	0.48 %
05.2018	573	1.62 %	561,210,915 JPY	0.86 %
06.2018	796	2.25 %	863,950,319 JPY	1.32 %
07.2018	601	1.70 %	608,962,234 JPY	0.93 %
08.2018	527	1.49 %	605,516,987 JPY	0.92 %
09.2018	836	2.37 %	1,009,974,463 JPY	1.54 %
10.2018	465	1.32 %	514,918,074 JPY	0.79 %
11.2018	587	1.66 %	677,239,329 JPY	1.03 %
12.2018	888	2.52 %	1,287,938,143 JPY	1.96 %
01.2019	562	1.59 %	867,703,502 JPY	1.32 %
02.2019	778	2.20 %	1,207,193,399 JPY	1.84 %
03.2019	1,269	3.59 %	2,145,944,279 JPY	3.27 %
04.2019	569	1.61 %	1,093,644,643 JPY	1.67 %
05.2019	756	2.14 %	1,415,692,750 JPY	2.16 %
06.2019	971	2.75 %	1,920,356,262 JPY	2.93 %
07.2019	722	2.05 %	1,433,234,198 JPY	2.19 %
08.2019	751	2.13 %	1,525,835,224 JPY	2.33 %
09.2019	1,111	3.15 %	2,370,986,778 JPY	3.62 %
10.2019	745	2.11 %	1,560,716,617 JPY	2.38 %
11.2019	983	2.78 %	2,242,801,470 JPY	3.42 %
12.2019	552	1.56 %	1,112,237,926 JPY	1.70 %
01.2020	426	1.21 %	803,309,499 JPY	1.22 %
02.2020	589	1.67 %	1,139,957,267 JPY	1.74 %
03.2020	818	2.32 %	1,620,979,802 JPY	2.47 %
04.2020	292	0.83 %	628,283,788 JPY	0.96 %
05.2020	423	1.20 %	837,802,693 JPY	1.28 %
06.2020	447	1.27 %	931,859,046 JPY	1.42 %
07.2020	317	0.90 %	585,990,003 JPY	0.89 %
08.2020	388	1.10 %	758,301,745 JPY	1.16 %
09.2020	456	1.29 %	893,101,749 JPY	1.36 %
10.2020	277	0.78 %	531,157,829 JPY	0.81 %
11.2020	306	0.87 %	556,379,763 JPY	0.85 %
12.2020	450	1.27 %	849,364,482 JPY	1.30 %
01.2021	549	1.56 %	1,071,026,106 JPY	1.63 %
02.2021	816	2.31 %	1,659,472,556 JPY	2.53 %
03.2021	1,141	3.23 %	2,263,825,213 JPY	3.45 %
04.2021	569	1.61 %	1,165,724,078 JPY	1.78 %
05.2021	748	2.12 %	1,482,837,959 JPY	2.26 %
06.2021	818	2.32 %	1,775,060,025 JPY	2.71 %
07.2021	829	2.35 %	1,752,282,605 JPY	2.67 %
08.2021	939	2.66 %	2,062,495,545 JPY	3.15 %
09.2021	1,265	3.58 %	2,843,505,425 JPY	4.34 %
10.2021	795	2.25 %	1,874,058,435 JPY	2.86 %
11.2021	1,046	2.96 %	2,536,920,340 JPY	3.87 %
12.2021	348	0.99 %	838,502,108 JPY	1.28 %
01.2022	309	0.88 %	793,010,705 JPY	1.21 %
02.2022	356	1.01 %	890,216,149 JPY	1.36 %
03.2022	552	1.56 %	1,325,488,868 JPY	2.02 %
04.2022	240	0.68 %	570,601,555 JPY	0.87 %
05.2022	264	0.75 %	658,207,402 JPY	1.00 %
06.2022	269	0.76 %	694,825,427 JPY	1.06 %
07.2022	156	0.44 %	390,626,327 JPY	0.60 %
08.2022	184	0.52 %	477,973,161 JPY	0.73 %
09.2022	146	0.41 %	405,370,042 JPY	0.62 %
10.2022	76	0.22 %	197,056,506 JPY	0.30 %
11.2022	31	0.09 %	68,050,826 JPY	0.10 %
12.2022	26	0.07 %	68,082,109 JPY	0.10 %
01.2023	14	0.04 %	33,489,068 JPY	0.05 %
02.2023	19	0.05 %	52,852,202 JPY	0.08 %
03.2023	20	0.06 %	48,889,593 JPY	0.07 %
04.2023	10	0.03 %	25,190,466 JPY	0.04 %
05.2023	18	0.05 %	57,272,490 JPY	0.09 %
06.2023	16	0.05 %	44,609,686 JPY	0.07 %
07.2023	4	0.01 %	13,528,113 JPY	0.02 %
08.2023	8	0.02 %	22,893,383 JPY	0.03 %
09.2023	14	0.04 %	42,563,333 JPY	0.06 %
10.2023	8	0.02 %	25,376,196 JPY	0.04 %
11.2023	2	0.01 %	4,150,864 JPY	0.01 %
12.2023	2	0.01 %	9,259,573 JPY	0.01 %
01.2024	0	0.00 %	0 JPY	0.00 %
02.2024	2	0.01 %	6,551,790 JPY	0.01 %
03.2024	0	0.00 %	0 JPY	0.00 %
04.2024	1	0.00 %	3,410,726 JPY	0.01 %
05.2024	0	0.00 %	0 JPY	0.00 %
06.2024	0	0.00 %	0 JPY	0.00 %
07.2024	1	0.00 %	4,269,320 JPY	0.01 %
08.2024	0	0.00 %	0 JPY	0.00 %
09.2024	0	0.00 %	0 JPY	0.00 %
10.2024	2	0.01 %	9,680,593 JPY	0.01 %
Total	35,305	100.00 %	65,577,016,138 JPY	100.00 %

Distribution by Monthly Payment

Monthly Payment	Number of Loans	Percentage of Loans	Outstanding Discounted Principal Balance	Percentage of Balance
<= 10,000 JPY	1,801	5.10 %	2,062,796,764 JPY	3.15 %
10,001 JPY - 20,000 JPY	6,622	18.76 %	8,358,278,958 JPY	12.75 %
20,001 JPY - 30,000 JPY	9,496	26.90 %	14,002,137,365 JPY	21.35 %
30,001 JPY - 40,000 JPY	7,031	19.92 %	12,915,206,126 JPY	19.69 %
40,001 JPY - 50,000 JPY	4,029	11.41 %	8,658,260,311 JPY	13.20 %
50,001 JPY - 60,000 JPY	2,331	6.60 %	5,709,739,853 JPY	8.71 %
60,001 JPY - 70,000 JPY	1,255	3.55 %	3,515,026,158 JPY	5.36 %
70,001 JPY - 80,000 JPY	713	2.02 %	2,213,834,088 JPY	3.38 %
80,001 JPY - 90,000 JPY	531	1.50 %	1,731,183,700 JPY	2.64 %
90,001 JPY - 100,000 JPY	413	1.17 %	1,482,224,256 JPY	2.26 %
100,001 JPY - 110,000 JPY	274	0.78 %	1,060,406,189 JPY	1.62 %
110,001 JPY - 120,000 JPY	189	0.54 %	833,558,726 JPY	1.27 %
120,001 JPY - 130,000 JPY	161	0.46 %	717,099,315 JPY	1.09 %
130,001 JPY - 140,000 JPY	103	0.29 %	495,511,866 JPY	0.76 %
140,001 JPY - 150,000 JPY	72	0.20 %	372,837,961 JPY	0.57 %
>= 150,001 JPY	284	0.80 %	1,448,914,502 JPY	2.21 %
Total	35,305	100.00 %	65,577,016,138 JPY	100.00 %

Distribution by Bonus Payment

Bonus Payment	Number of Loans	Percentage of Loans	Outstanding Discounted Principal Balance	Percentage of Balance
No Bonus Payment	21,276	60.26 %	39,044,074,878 JPY	59.54 %
1 JPY - 25,000 JPY	329	0.93 %	437,097,444 JPY	0.67 %
25,001 JPY - 50,000 JPY	3,513	9.95 %	5,324,340,148 JPY	8.12 %
50,001 JPY - 75,000 JPY	1,222	3.46 %	2,014,300,242 JPY	3.07 %
75,001 JPY - 100,000 JPY	4,836	13.70 %	8,922,572,344 JPY	13.61 %
100,001 JPY - 125,000 JPY	618	1.75 %	1,227,302,611 JPY	1.87 %
125,001 JPY - 150,000 JPY	1,861	5.27 %	4,162,896,876 JPY	6.35 %
150,001 JPY - 175,000 JPY	200	0.57 %	456,828,247 JPY	0.70 %
175,001 JPY - 200,000 JPY	901	2.55 %	2,289,837,696 JPY	3.49 %
200,001 JPY - 225,000 JPY	57	0.16 %	143,436,683 JPY	0.22 %
225,001 JPY - 250,000 JPY	218	0.62 %	636,487,294 JPY	0.97 %
250,001 JPY - 275,000 JPY	22	0.06 %	68,141,675 JPY	0.10 %
275,001 JPY - 300,000 JPY	156	0.44 %	496,962,490 JPY	0.76 %
300,001 JPY - 325,000 JPY	8	0.02 %	29,808,551 JPY	0.05 %
325,001 JPY - 350,000 JPY	33	0.09 %	111,748,832 JPY	0.17 %
350,001 JPY - 375,000 JPY	5	0.01 %	19,203,105 JPY	0.03 %
375,001 JPY - 400,000 JPY	20	0.06 %	79,035,173 JPY	0.12 %
400,001 JPY - 425,000 JPY	0	0.00 %	0 JPY	0.00 %
425,001 JPY - 450,000 JPY	8	0.02 %	29,417,978 JPY	0.04 %
450,001 JPY - 475,000 JPY	0	0.00 %	0 JPY	0.00 %
475,001 JPY - 500,000 JPY	17	0.05 %	60,037,285 JPY	0.09 %
500,001 JPY or more	5	0.01 %	23,486,586 JPY	0.04 %
Total	35,305	100.00 %	65,577,016,138 JPY	100.00 %

Distribution by Motor Type

Motor Type	Number of Loans	Percentage of Loans	Outstanding Discounted Principal Balance	Percentage of Balance
EA 189	0	0.00 %	0 JPY	0.00 %
Other	35,305	100.00 %	65,577,016,138 JPY	100.00 %
Total	35,305	100.00 %	65,577,016,138 JPY	100.00 %

Disclaimer

This presentation contains forward-looking statements and information on the business development of the Volkswagen Group. These statements may be spoken or written and can be recognized by terms such as "expects", "anticipates", "intends", "plans", "believes", "seeks", "estimates", "will", or words with similar meaning. These statements are based on assumptions relating to the development of the economies of individual countries, and in particular of the automotive industry, which we have made on the basis of the information available to us and which we consider to be realistic at the time of going to press. The estimates given involve a degree of risk, and the actual developments may differ from those forecast.

Consequently, any unexpected fall in demand or economic stagnation in our key sales markets, such as in Western Europe (and especially Germany) or in the USA, Brazil or China, will have a corresponding impact on the development of our business. The same applies in the event of a significant shift in current exchange rates relative to the US dollar, sterling, yen, Brazilian real, Chinese renminbi and Czech koruna.

If any of these or other risks occur, or if the assumptions underlying any of these statements prove incorrect, the actual results may significantly differ from those expressed or implied by such statements.

We do not update forward-looking statements retrospectively. Such statements are valid on the date of publication and can be superceded.

This information does not constitute an offer to exchange or sell or an offer to exchange or buy any securities.