

**Deal Name:** Driver Japan six

**Originator:** Volkswagen Financial Services Japan Ltd.  
Gotenyama Trust Tower 17F  
7-35 Kitashinagawa 4-chome, Shinagawa-ku  
Tokyo 140-0001, Japan

**Reporting Entity:** Volkswagen Financial Services Japan Ltd.  
Treasury Dept.  
Gotenyama Trust Tower 17F  
7-35 Kitashinagawa 4-chome, Shinagawa-ku  
Tokyo 140-0001, Japan  
Tel No.: +81(0)3-5792-7261  
Fax No.: +81(0)3-3280-7365  
E-mail: vwfsjp.abs@vwfs.com

**Trustor of the First Trust:  
Servicer:** Volkswagen Financial Services Japan Ltd.

**Trustee of the First Trust:  
Trustee of the Second Trust:** Deutsche Trust Company Limited Japan  
Sanno Park Tower, 11-1,  
Nagatacho 2-chome, Chiyoda-ku,  
Tokyo, 100-6172, Japan  
Trust Business Administration Department  
Tel No.: +81(0)3-5156-5637  
Fax No.: +81(0)3-5156-5658  
E-mail: DB\_Trust\_Trust@list.db.com



## Contents

Page	Tables of Contents
1	<a href="#">Front Page</a>
2	<a href="#">Contents</a>
3	<a href="#">Deal Overview</a>
4	<a href="#">Deal Overview: Counterparties I</a>
5	<a href="#">Deal Overview: Counterparties II</a>
6	<a href="#">Information regarding the TBI and ABL to the Second Trust</a>
7	<a href="#">Pool Information</a>
8	<a href="#">Available Distribution</a>
9	<a href="#">Waterfall</a>
10	<a href="#">Credit Enhancement</a>
11	<a href="#">Cumulative Gross Loss Ratio &amp; Performance Trigger</a>
12	<a href="#">Cumulative Gross Loss Ratio &amp; Performance Trigger (Chart)</a>
13	<a href="#">Default &amp; Delinquencies</a>
14	<a href="#">Run Out Schedule (Previous)</a>
15	<a href="#">Run Out Schedule</a>
16	<a href="#">Expected Amortization to the Second Trust</a>
17	<a href="#">Sub-Servicer</a>
18	<a href="#">Brand</a>
19	<a href="#">New and Used</a>
20	<a href="#">Product Type</a>
21	<a href="#">RV</a>
22	<a href="#">Brand New and Used</a>
23	<a href="#">Customer Type</a>
24	<a href="#">Outstanding Discounted Principal Balance</a>
25	<a href="#">Original Principal Amount</a>
26	<a href="#">Interest Rate paid by the Obligor</a>
27	<a href="#">Original Term</a>
28	<a href="#">Remaining Term</a>
29	<a href="#">Seasoning</a>
30	<a href="#">Type of Car</a>
31	<a href="#">Brand and Model</a>
32	<a href="#">Geographic Dist. by Prefecture</a>
33	<a href="#">Obligor Concentration</a>
34	<a href="#">Contract Start Month</a>
35	<a href="#">Contract End Month</a>
36	<a href="#">Monthly payment</a>
37	<a href="#">Bonus payment</a>
38	<a href="#">Mortor Type</a>

### Deal Overview

<b>Cut Off Date:</b>	2017/02/10		
<b>Trust Commencement Date:</b>	2017/02/23	<b>Legal Maturity of the First Trust:</b>	2025/06/27
<b>Monthly Period:</b>	2017/09/11	to	2017/10/10
<b>Reporting Date:</b>	2017/10/17		
<b>Reporting Frequency:</b>	monthly		
<b>Period No.:</b>	8		
<b>Remittance Date:</b>	2017/10/24		
<b>Advance Payment Date:</b>	2017/10/24		
<b>Cash Adjustment Date:</b>	2017/10/24		
<b>Additional Entrustment Date:</b>	2017/10/26		
<b>Trust Calculation Date:</b>	2017/10/26		
<b>Trust Calculation Period:</b>	2017/09/27	to	2017/10/26
<b>First Trust Payment Date:</b>	2017/10/27		
<b>Second Trust Payment Date:</b>	2017/10/30		
<b>Interest Calculation Period:</b>	2017/09/29	to	2017/10/30
<b>Next Reporting Date:</b>	2017/11/17		

### Pool information at the Initial Cut off Date

	Number of Contracts	Outstanding Discounted Principal Balance	Outstanding Nominal Balance
Outstanding Pool	30,757	64,171,706,472 JPY	67,028,993,300 JPY

Credit Type	Percentage of Loans	Outstanding Discounted Principal Balance	Percentage of Balance
Balloon	76.13 %	55,443,642,000 JPY	86.40 %
Equal Instalment Loan	23.87 %	8,728,064,472 JPY	13.60 %
<b>Total</b>	<b>100.00 %</b>	<b>64,171,706,472 JPY</b>	<b>100.00 %</b>

Type of Car	Percentage of Loans	Outstanding Discounted Principal Balance	Percentage of Balance
New	66.66 %	49,506,381,305 JPY	77.15 %
Used	33.34 %	14,665,325,167 JPY	22.85 %
<b>Total</b>	<b>100.00 %</b>	<b>64,171,706,472 JPY</b>	<b>100.00 %</b>

**Deal Overview: Counterparties I**

**Joint Lead Managers:**

**Shinsei Securities Co., Ltd.**  
 Nihonbashi Muromachi Nomura Building, 4-3,  
 Nihonbashi-muromachi 2-chome,  
 Chuo-ku,  
 Tokyo 103-0022, Japan

**BNP Paribas Securities (Japan) Limited**  
 GranTokyo North Tower, 9-1,  
 Marunouchi 1-chome,  
 Chiyoda-ku,  
 Tokyo 100-6740, Japan

**Trust Management Account Bank:**

**The Bank of Tokyo-Mitsubishi UFJ, Ltd.**  
 4-2 Toranomon 1-chome,  
 Minato-ku  
 Tokyo 105-0001, Japan

Rating								
Moody's			Fitch			R&I		
Long Term	Short Term	Outlook	Long Term	Short Term	Outlook	Long Term	Short Term	Outlook
n.a.	n.a.	n.a.	n.a.	n.a.	n.a.	n.a.	n.a.	n.a.
n.a.	n.a.	n.a.	n.a.	n.a.	n.a.	n.a.	n.a.	n.a.
A1	P-1	Stable	A	F1	Stable	AA-	a-1+	Stable

**Originator:**

**Trustor of the First Trust:**

**Servicer:**

**Volkswagen Financial Services Japan Ltd.**  
 Gotenyama Trust Tower 17F  
 7-35 Kitashinagawa 4-chome, Shinagawa-ku  
 Tokyo 140-0001, Japan

**Trustee of the First Trust:**

**Trustee of the Second Trust:**

**Deutsche Trust Company Limited Japan**  
 Attn.: Driver Japan Six  
 Trust Business Administration Department

**ABL Lender to the First Trust:**

**Trustor of the Second Trust:**

Shinsei Securities Co., Ltd.

**Seller of the Trust Beneficial**

**Interest of the Second Trust**

Shinsei Securities Co., Ltd.  
 BNP Paribas Securities (Japan) Limited

**Deal Overview: Counterparties II**

**Rating Agencies:**

**Moody's SF Japan K.K.**

Attn.: Driver Japan six  
 Structure Finance Group Monitoring Division  
 5-1 Atago 2-chome, Minato-ku  
 Tokyo 105-6220, Japan  
 E-mail: monitor.msfi@moodys.com

**Fitch Ratings Japan Limited**

Attn.: Driver Japan six  
 Structured Finance  
 Kojimachi Crystal City East Wing 3rd Floor,  
 4-8 Kōjimachi, Chiyoda-ku,  
 Tokyo 102-0083, Japan  
 E-mail: tokyo.surveillance@fitchratings.com

**Rating and Investment Information, Inc.**

Attn.: Monitoring Group Department:  
 Structured Finance Department  
 TERRACE SQUARE, 3-22,  
 Kanda Nishikicho, Chiyoda-ku,  
 Tokyo 101-0054, Japan  
 E-mail: sfmonitor@r-i.co.jp

**Rating of VW**

**Volkswagen Financial Services AG**

**Volkswagen AG**

Rating								
Moody's			Fitch			R&I		
Short Term	Long Term	Outlook	Short Term	Long Term	Outlook	Short Term	Long Term	Outlook
P-2	A3	Negative	n.a.	n.a.	n.a.	n.a.	n.a.	n.a.
P-2	A3	Negative	F2	BBB+	Stable	n.a.	n.a.	n.a.

**Information regarding Trust Beneficial Interest of the Second Trust & Asset Backed Loan to the Second Trust**

**Rating Details**

	<u>TBI</u>	<u>ABL</u>
<b>Rating at Issue Date</b>		
Moody's	Aaa(sf)	Aaa(sf)
Fitch	AAAsf	AAAsf
R&I	AAA	AAA
<b>Current Rating</b>		
Moody's	Aaa(sf)	Aaa(sf)
Fitch	AAAsf	AAAsf
R&I	AAA	AAA

**Information on TBI & ABL**

	<u>TBI</u>	<u>ABL</u>
Initial Balance	39,200,000,000 JPY	20,800,000,000 JPY
Expected Maturity Date	2021/04/28	2021/04/28
Legal Maturity of the Second Trust	2025/06/30	2025/06/30
Payment Dates	28th	28th
Business Day Convention	Modified Following	Modified Following
Listing	None	—

**Information on Interest**

	<u>TBI</u>	<u>ABL</u>
Fixed/ Floating	Fixed	Fixed
Current Coupon	0.19%	0.19%
Day Count Convention	30/360	30/360

**Selling Restriction**

The holders of the Beneficial Interest and the ABL Lenders\* are prohibited from dividing, assigning, pledging or creating any other security interest over any of the Beneficial Interest and the Asset Backed Loans without the prior written approval of the Trustee of the Second Trust.

(\*)The holders of the Beneficial Interest and the ABL Lenders are limited to specified investors (*tokutei toushika*) as defined under Paragraph 31 of Article 2 of the Financial Instruments and Exchange Act (Law no.25 of 1948 as amended).

**Clean-Up Call**

VWFS Japan as the Trustor of the First Trust has a right at its option to exercise a clean-up call to repurchase of all, but not part, of the outstanding Auto Loan Receivables from the Trustee of the First Trust on any Trust Calculation Date, the Discounted Principal Balance of all outstanding Auto Loan Receivables is expected to be less than ten percent (10%) of the Discounted Principal Balance of the Initial Auto Loan Receivables as of the Initial Cut-off Date after the distribution pursuant to Article 18.1 of the First Trust Agreement on the immediately following First Trust Payment Date.

**Pool Information**
**Pool Balance on Initial Cut-Off Date**

Status	Number of Contracts	Outstanding Discounted Principal Balance
Normal	30,757	64,171,706,472 JPY
Cancellation	0	0 JPY
Early Termination	0	0 JPY
Defaulted Receivables	0	0 JPY
Matured	0	0 JPY
Refinance Option	0	0 JPY
Repurchase	0	0 JPY
<b>Total</b>	<b>30,757</b>	<b>64,171,706,472 JPY</b>

**Pool Balance before entrustment of Additional Auto Loan Receivables**

Status	Number of Contracts on previous EoP	Outstanding Discounted Principal Balance on previous EoP	Number of Contracts "as Collections" during the relevant Monthly Period*	Outstanding Discounted Principal Balance "as Collections" during the relevant Monthly Period*	Number of Contracts EoP before entrustment of Additional Auto Loan Receivables	Outstanding Discounted Principal Balance EoP before entrustment of Additional Auto Loan Receivables
Normal	33,997	65,436,736,516 JPY	33,281	1,100,299,791 JPY	33,281	63,378,462,402 JPY
Cancellation	0	0 JPY	0	0 JPY	0	0 JPY
Early Termination	0	0 JPY	288	554,874,909 JPY	0	0 JPY
Defaulted Receivables	0	0 JPY	3	5,828,509 JPY	0	0 JPY
Matured	0	0 JPY	359	286,911,084 JPY	0	0 JPY
Refinance Option	0	0 JPY	66	110,359,821 JPY	0	0 JPY
Repurchase	0	0 JPY	0	0 JPY	0	0 JPY
<b>Total</b>	<b>33,997</b>	<b>65,436,736,516 JPY</b>	<b>33,997</b>	<b>2,058,274,114 JPY</b>	<b>33,281</b>	<b>63,378,462,402 JPY</b>

**Pool Balance after entrustment of Additional Auto Loan Receivables**

Status	Number of Contracts EoP before entrustment of Additional Auto Loan Receivables	Outstanding Discounted Principal Balance EoP before entrustment of Additional Auto Loan Receivables	Number of Contracts of Additional Auto Loan Receivables	Outstanding Discounted Principal Balance of Additional Auto Loan Receivables	Number of Contracts EoP after entrustment of Additional Auto Loan Receivables	Outstanding Discounted Principal Balance EoP after entrustment of Additional Auto Loan Receivables
Normal	33,281	63,378,462,402 JPY	946	2,195,570,082 JPY	34,227	65,574,032,484 JPY
Cancellation	0	0 JPY	0	0 JPY	0	0 JPY
Early Termination	0	0 JPY	0	0 JPY	0	0 JPY
Defaulted Receivables	0	0 JPY	0	0 JPY	0	0 JPY
Matured	0	0 JPY	0	0 JPY	0	0 JPY
Refinance Option	0	0 JPY	0	0 JPY	0	0 JPY
Repurchase	0	0 JPY	0	0 JPY	0	0 JPY
<b>Total</b>	<b>33,281</b>	<b>63,378,462,402 JPY</b>	<b>946</b>	<b>2,195,570,082 JPY</b>	<b>34,227</b>	<b>65,574,032,484 JPY</b>

**Limits on Eligibility Criteria**

Status Limits on Eligibility Criteria (v) (including Additional Entrustment)	Current Exposure in %	Limits in % of the aggregate Discounted Principal Balance of the Auto Loan Receivables outstanding	Status
(i) on Used Purchased Vehicle	22.48 %	35 %	OK
(ii) on Non-VW Vehicles	0.02 %	5 %	OK
(iii) on Balloon Payment	43.18 %	50 %	OK

### Outstanding Balances

**Monthly Period:** from 2017/09/11 to 2017/10/10  
**Reporting Date:** 2017/10/17  
**Trust Calculation Date:** 2017/10/26

### Outstanding Balances

	Number of Contracts	Aggregate Amount of the Discounted Principal Balance	Aggregate Amount of the Nominal Balance
Balance on the previous EoP	33,997	65,436,736,516 JPY	68,029,938,600 JPY
Balance after counting on the Collections during the relevant	33,281	63,378,462,402 JPY	65,838,220,600 JPY
Balance of Additional Auto Loan Receivables	946	2,195,570,082 JPY	2,298,643,200 JPY
<b>Aggregate Amount of Auto Loan Receivables</b>	<b>34,227</b>	<b>65,574,032,484 JPY</b>	<b>68,136,863,800 JPY</b>

### Collections

	Number of Contracts	Aggregate Amount of the Discounted Principal Balance	Aggregate Amount of the Nominal Balance
Collections: Amortization of current contracts	33,281	1,100,299,791 JPY	1,215,061,100 JPY
Collections: Cancellation	0	0 JPY	0 JPY
Collections: Early Termination	288	554,874,909 JPY	555,652,465 JPY
Collections: Defaulted Receivables	3	5,828,509 JPY	5,851,427 JPY
Collections: Matured	359	286,911,084 JPY	287,295,900 JPY
Collections: Refinance Option	66	110,359,821 JPY	110,500,000 JPY
Collections: Repurchase	0	0 JPY	0 JPY
<b>Sum</b>	<b>33,997</b>	<b>2,058,274,114 JPY</b>	<b>2,174,360,892 JPY</b>

### Available Distribution Amount

	Number of Contracts	Aggregate Amount of the Nominal Balance
(a) the Collections for the Monthly Period with respect to such Trust Calculation Date	33,997	2,174,360,892 JPY
(b) drawings from the Cash Collateral Ledger in accordance with Article 18.3 of the First Trust Agreement	0	0 JPY
(c) net investment earnings from Eligible Investments	0	0 JPY
(d) net proceeds from the sale or disposal of the Trust Assets of the First Trust	0	0 JPY
(e) any amount which is carried over from the immediately preceding Trust Calculation Date	0	0 JPY
<b>Sum</b>	<b>33,997</b>	<b>2,174,360,892 JPY</b>



**Waterfall**

There is no distinction between principal and interest, and all collections go through a single priority of payments			
		Payment	Remaining Amount
Available Distribution Amount	plus	2,174,360,892 JPY	2,174,360,892 JPY
(a) an amount necessary for the payment of all taxes and public charges to be paid to the relevant public authority by the immediately following First Trust Payment Date.	less	0 JPY	2,174,360,892 JPY
(b) an amount necessary for the payment of all Fees for the Trustee of the First Trust to be paid to the Trustee of the First Trust by the immediately following First Trust Payment Date.	less	588,930 JPY	2,173,771,962 JPY
(c) an amount necessary for the payment of the Servicing Fee to be paid to the Servicer by the immediately following First Trust Payment Date.	less	58,893,062 JPY	2,114,878,900 JPY
(d) an amount necessary for the payment of the Trust Expenses of the First Trust as provided in Article 23.1 (including the Rating Fees, Costs of the Second Trust and those fees not otherwise covered by (b) or (c) above) to be paid to the relevant party by the immediately following First Trust Payment Date (including any amounts advanced by the Trustee of the First Trust pursuant to Article 23.3)	less	603,726 JPY	2,114,275,174 JPY
(e) an amount necessary for the payment of overdue and unpaid interest on the Asset Backed Loans to the First Trust (if any) to be paid to the Trustee of the Second Trust by the immediately following First Trust Payment Date.	less	0 JPY	2,114,275,174 JPY
(f) an amount necessary for the payment to the Trustee of the Second Trust of interest on the Asset Backed Loan to the First Trust accruing during the relevant Interest Calculation Period	less	9,500,000 JPY	2,104,775,174 JPY
(g) an amount necessary to top up the balance thereof until it is equal to the Cash Collateral Ledger Target Balance	less	0 JPY	2,104,775,174 JPY
(h) (i) prior to the expiration of the Revolving Period: an amount necessary for the redemption of any Additional Senior Beneficial Interest;	less	2,052,858,026 JPY	51,917,148 JPY
(ii) following the expiration of the Revolving Period and prior to the occurrence of an Early Amortization Event, an amount necessary for the payment to the Trustee of the Second Trust of the Asset Backed Loan Principal Payment Amount for the relevant First Trust Payment Date.			
(iii) following the occurrence of the Early Amortization Event, an amount necessary for the payment to the Trustee of the Second Trust of the remaining principal balance of the Asset Backed Loan to the First Trust.			
(i) an amount necessary for the payment to the Trustee of the First Trust of any Indemnified Amounts which are not compensated by the Trustor of the First Trust	less	0 JPY	51,917,148 JPY
(j) an amount necessary for the payment to the Subordinated Beneficiary of the Subordinated Beneficial Principal Payment Amount for the relevant First Trust Payment Date.	less	5,655,810 JPY	46,261,338 JPY
(k) (i) prior to the expiration of the Revolving Period, then (x) if a transfer is made under (j) above, such remaining amount will be transferred to the Expenses Distribution Ledger for payment to the Subordinated Beneficiary as a payment of earnings on the Subordinated Beneficial Interest, and such payment shall be made on the First Trust Payment Date immediately following such Trust Calculation Date or (y) if no transfer is made under (j) above, such remaining amount will be carried forward to the next Trust Calculation Date.	less	46,261,338 JPY	0 JPY
(ii) following the expiration of the Revolving Period and prior to the occurrence of an Early Amortization Event, then such remaining amount will be transferred to the Expenses Distribution Ledger for payment to the Subordinated Beneficiary as a payment of earnings on the Subordinated Beneficial Interest, and such payment shall be made on the First Trust Payment Date immediately following such Trust Calculation Date.			
(iii) following the occurrence of an Early Amortization Event, the remaining amount in the Trust Collection Ledger will be carried forward to the next Trust Calculation Date.			

## Credit Enhancement

### Subordinated Principal Balance as of the relevant First Trust Payment Date

	Percentage of Aggregate Discounted Principal Balance	Value
(i) the aggregate amount of the Discounted Principal Balance of all Auto Loan Receivables outstanding		65,574,032,484 JPY
(ii) Asset Backed Loan Principal Balance on the relevant First Trust Payment Date		60,000,000,000 JPY
Overcollateralization ( = (i) - (ii) )	8.50 %	5,574,032,484 JPY
Trust Collection Ledger which is carried over from the immediately preceding Trust Calculation Date	0.00 %	0 JPY
The amount in the Cash Collateral Ledger	0.53 %	345,000,000 JPY
Subordinated Principal Balance	9.03 %	5,919,032,484 JPY

### Trust Management Account (TMA)

	in JPY	+/-	in JPY (previous)
<b>Initial Balance on Cash Entrustment Date</b>	<b>345,000,000 JPY</b>		<b>0 JPY</b>
<b>Outstanding Balance on First Trust Payment Date</b>	<b>345,000,000 JPY</b>	<b>0 JPY</b>	<b>345,000,000 JPY</b>
(a) Expenses Distribution Ledger	0 JPY	0 JPY	0 JPY
(b) Trust Collection Ledger	0 JPY	0 JPY	0 JPY
(c) Cash Collateral Ledger	345,000,000 JPY	0 JPY	345,000,000 JPY
<b>Cash Collateral Ledger Target Balance</b>	<b>345,000,000 JPY</b>		

### Calculation of Credit Enhancement

Driver Japan six's Credit Enhancement consists of the items listed above in the Subordinated Principal Balance as of the relevant date of determination (immediately following the First Trust Payment Date). The result provides an absolute value, which will be applied to the (amortized) Aggregate Discounted Principal Balance as of the end of the relevant date.

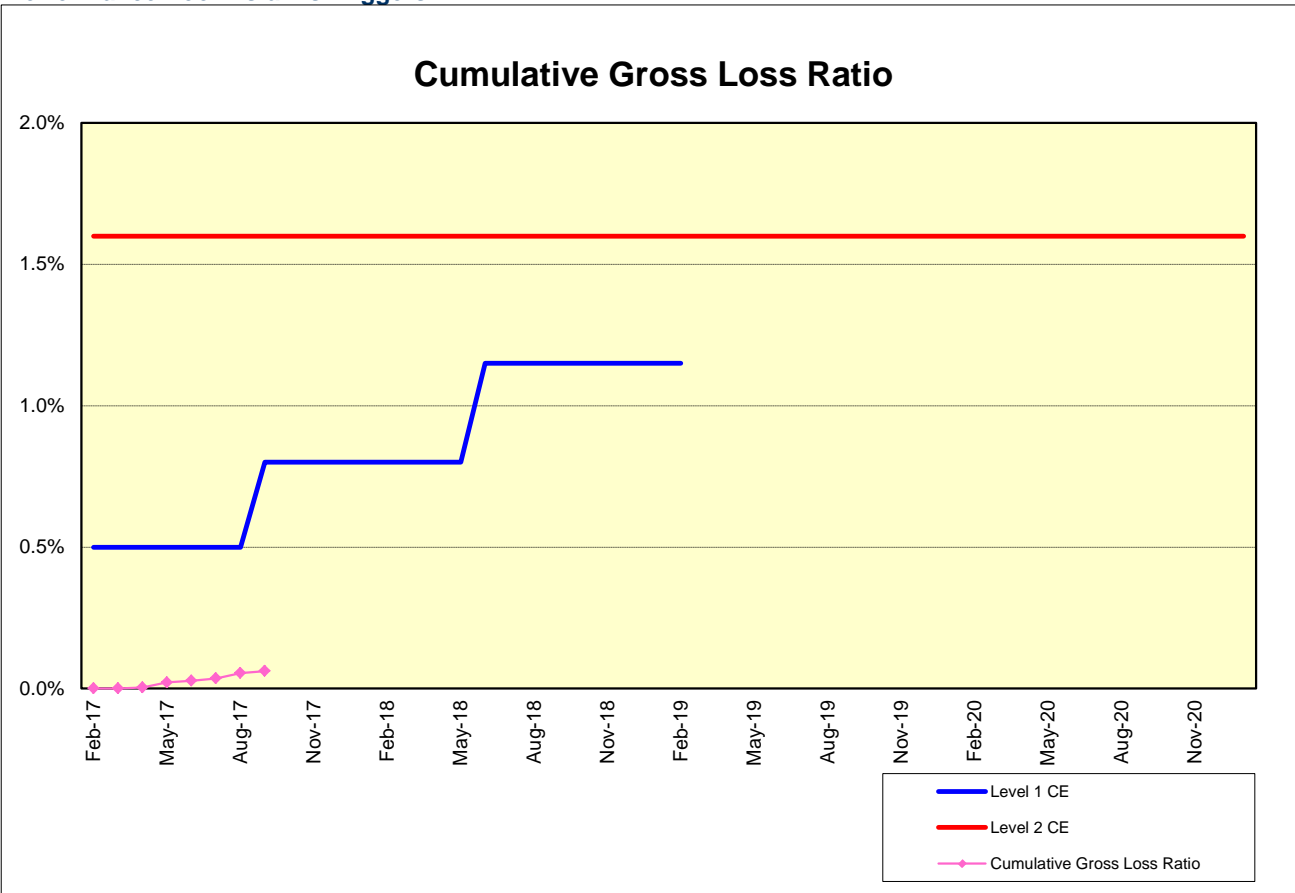
The transaction has a Revolving Period of 12 months until February 2018.

Asset Backed Loan Overcollateralization Percentage is (i) prior to the expiration of the Revolving Period, 8.5%, and (ii) following the expiration of the Revolving Period, 11.5%; provided, in each case no Credit Enhancement Increase Condition shall be in effect. After a Level 1 Credit Enhancement Increase Condition in effect, 17% and after a Level 2 Credit Enhancement Increase Condition is in effect, 100%.



**Cumulative Gross Loss & Cumulative Repurchased Receivables**

**Performance Pool vis-a-vis Triggers**



**Cumulative Repurchased Receivables**

	Number of Contracts	Repurchase Price
Beginning of Period	0	0 JPY
Repurchased Receivables	0	0 JPY
<b>End of Period</b>	<b>0</b>	<b>0 JPY</b>

### Defaulted and Delinquent Contracts

#### Information of Delinquencies and Defaults

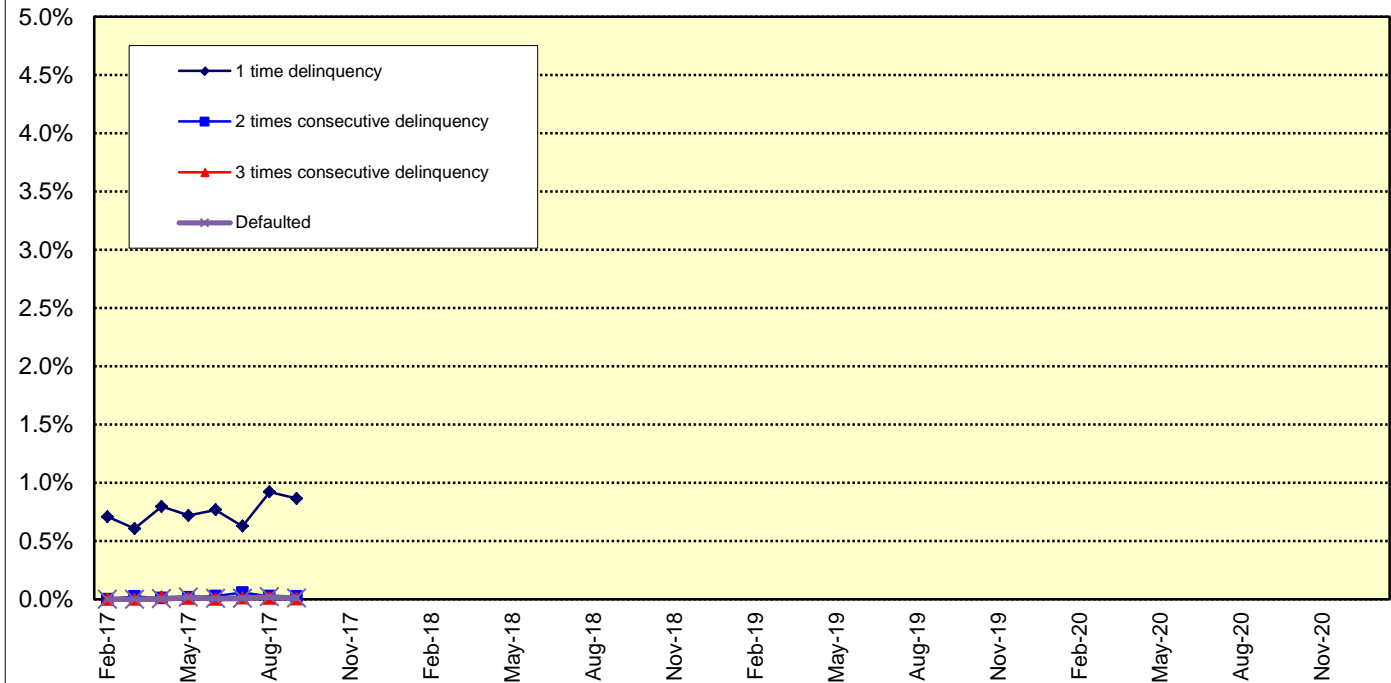
Current Reporting Period	Number of Contracts	Percentage of Contracts (*)	Outstanding Discounted Principal Balance	Percentage of Principal Balance (*)	Outstanding Nominal Balance	Percentage of Nominal Balance (*)
Delinquent	318	0.94 %	583,443,942 JPY	0.89 %	609,550,200 JPY	0.90 %
Default	3	0.01 %	5,828,509 JPY	0.01 %	5,851,427 JPY	0.01 %

(\*) Based on the previous EoP

#### Delinquency Profile (Information Purpose Only)

Days in Arrears	Number of Contracts	Percentage of Contracts	Outstanding Discounted Principal Balance	Percentage of Principal Balance	Outstanding Nominal Balance	Percentage of Nominal Balance
1	309	0.90 %	566,754,788 JPY	0.86 %	592,001,000 JPY	0.87 %
2	7	0.02 %	15,123,139 JPY	0.02 %	15,925,200 JPY	0.02 %
3	2	0.01 %	1,566,015 JPY	0.00 %	1,624,000 JPY	0.00 %
<b>Total</b>	<b>318</b>	<b>0.93 %</b>	<b>583,443,942 JPY</b>	<b>0.89 %</b>	<b>609,550,200 JPY</b>	<b>0.89 %</b>

### Delinquent / Defaulted (Gross Loss) Ratio



Run Out Schedule

ROS on the previous EoP on 2017/09/10

Next Payment Month	Number of Contracts	ABS Outstanding Principal	ABS Outstanding Interest	Outstanding Installment	ABS Remaining Principal	ABS Remaining Interest	ABS Remaining Installment
08.2017	33,997	65,436,736,516 JPY	2,593,202,084 JPY	68,029,938,600 JPY	0 JPY	0 JPY	0 JPY
09.2017	33,997	63,927,934,225 JPY	2,476,925,675 JPY	66,404,859,900 JPY	1,508,802,291 JPY	116,276,409 JPY	1,625,078,700 JPY
10.2017	33,572	62,625,331,992 JPY	2,363,257,408 JPY	64,988,589,400 JPY	1,302,602,233 JPY	113,668,267 JPY	1,416,270,500 JPY
11.2017	33,319	61,256,238,117 JPY	2,251,919,883 JPY	63,508,158,000 JPY	1,369,093,875 JPY	111,337,525 JPY	1,480,431,400 JPY
12.2017	32,984	58,634,812,087 JPY	2,143,020,113 JPY	60,777,832,200 JPY	2,621,426,030 JPY	108,899,770 JPY	2,730,325,800 JPY
01.2018	32,462	56,985,937,424 JPY	2,038,745,576 JPY	59,024,683,000 JPY	1,648,874,663 JPY	104,274,537 JPY	1,753,149,200 JPY
02.2018	32,046	55,417,572,541 JPY	1,937,462,859 JPY	57,355,035,400 JPY	1,568,364,883 JPY	101,282,717 JPY	1,669,647,600 JPY
03.2018	31,400	53,323,538,393 JPY	1,838,896,107 JPY	55,162,434,500 JPY	2,094,034,148 JPY	98,566,752 JPY	2,192,600,900 JPY
04.2018	30,232	52,044,689,659 JPY	1,743,587,341 JPY	53,788,277,000 JPY	1,278,848,734 JPY	95,308,766 JPY	1,374,157,500 JPY
05.2018	29,860	50,556,934,589 JPY	1,650,553,511 JPY	52,207,488,100 JPY	1,487,755,070 JPY	93,033,830 JPY	1,580,788,900 JPY
06.2018	29,271	48,399,305,751 JPY	1,560,057,949 JPY	49,959,363,700 JPY	2,157,628,838 JPY	90,495,562 JPY	2,248,124,400 JPY
07.2018	28,461	46,423,702,695 JPY	1,473,253,705 JPY	47,896,956,400 JPY	1,975,603,056 JPY	86,804,244 JPY	2,062,407,300 JPY
08.2018	27,871	44,935,488,037 JPY	1,390,010,963 JPY	46,325,499,000 JPY	1,488,214,658 JPY	83,242,742 JPY	1,571,457,400 JPY
09.2018	27,351	43,279,860,562 JPY	1,309,444,838 JPY	44,589,305,400 JPY	1,655,627,475 JPY	80,566,125 JPY	1,736,193,600 JPY
10.2018	26,505	42,040,050,296 JPY	1,231,766,304 JPY	43,271,816,600 JPY	1,239,810,266 JPY	77,678,534 JPY	1,317,488,800 JPY
11.2018	26,032	40,713,618,035 JPY	1,156,348,465 JPY	41,869,966,500 JPY	1,326,432,261 JPY	75,417,839 JPY	1,401,850,100 JPY
12.2018	25,429	38,199,693,937 JPY	1,083,278,563 JPY	39,282,972,500 JPY	2,513,924,098 JPY	73,069,902 JPY	2,586,994,000 JPY
01.2019	24,570	36,612,375,801 JPY	1,014,707,099 JPY	37,627,082,900 JPY	1,587,318,136 JPY	68,571,464 JPY	1,655,889,600 JPY
02.2019	24,035	35,065,583,327 JPY	948,988,073 JPY	36,014,571,400 JPY	1,546,792,474 JPY	65,719,026 JPY	1,612,511,500 JPY
03.2019	23,267	32,953,953,968 JPY	886,008,332 JPY	33,839,962,300 JPY	2,111,629,359 JPY	62,979,741 JPY	2,174,609,100 JPY
04.2019	22,021	31,555,149,166 JPY	826,650,834 JPY	32,381,800,000 JPY	1,398,804,802 JPY	59,357,498 JPY	1,458,162,300 JPY
05.2019	21,466	29,993,098,780 JPY	769,687,220 JPY	30,762,786,000 JPY	1,562,050,386 JPY	56,963,614 JPY	1,619,014,000 JPY
06.2019	20,731	27,806,399,131 JPY	715,346,269 JPY	28,521,745,400 JPY	2,186,699,649 JPY	54,340,951 JPY	2,241,040,600 JPY
07.2019	19,792	25,940,537,941 JPY	664,635,059 JPY	26,605,173,000 JPY	1,865,861,190 JPY	50,711,210 JPY	1,916,572,400 JPY
08.2019	19,109	24,392,424,085 JPY	617,090,615 JPY	25,009,514,700 JPY	1,548,113,856 JPY	47,544,444 JPY	1,595,658,300 JPY
09.2019	18,382	22,421,865,851 JPY	572,030,049 JPY	22,993,895,900 JPY	1,970,558,234 JPY	45,060,566 JPY	1,405,618,800 JPY
10.2019	17,264	21,028,854,154 JPY	529,979,946 JPY	21,558,834,100 JPY	1,393,011,697 JPY	42,050,103 JPY	1,435,061,800 JPY
11.2019	16,531	19,297,118,715 JPY	490,205,985 JPY	19,787,324,700 JPY	1,731,735,439 JPY	39,773,961 JPY	1,771,509,400 JPY
12.2019	15,563	17,898,274,604 JPY	453,057,696 JPY	18,351,332,300 JPY	1,398,844,111 JPY	37,148,289 JPY	1,435,992,400 JPY
01.2020	15,084	17,006,523,389 JPY	418,480,911 JPY	17,425,004,300 JPY	891,751,215 JPY	34,576,785 JPY	926,328,000 JPY
02.2020	14,724	16,203,064,948 JPY	385,580,252 JPY	16,588,645,200 JPY	803,458,441 JPY	32,900,659 JPY	836,359,100 JPY
03.2020	14,264	15,289,331,348 JPY	354,160,452 JPY	15,643,491,800 JPY	913,733,600 JPY	31,419,800 JPY	945,153,400 JPY
04.2020	13,640	14,685,768,679 JPY	324,362,721 JPY	15,010,131,400 JPY	603,562,669 JPY	29,797,731 JPY	633,360,400 JPY
05.2020	13,422	14,083,325,216 JPY	295,714,484 JPY	14,379,039,700 JPY	602,443,263 JPY	28,648,237 JPY	631,091,700 JPY
06.2020	13,110	13,304,348,590 JPY	268,249,410 JPY	13,572,598,000 JPY	778,976,626 JPY	27,465,074 JPY	806,441,700 JPY
07.2020	12,812	12,546,080,448 JPY	242,327,752 JPY	12,788,408,200 JPY	758,268,142 JPY	25,921,658 JPY	784,189,800 JPY
08.2020	12,589	11,997,137,028 JPY	217,924,672 JPY	12,205,061,700 JPY	558,943,420 JPY	24,403,080 JPY	583,346,500 JPY
09.2020	12,311	11,445,650,842 JPY	194,647,358 JPY	11,640,298,200 JPY	541,486,186 JPY	23,277,314 JPY	564,763,500 JPY
10.2020	11,950	10,968,522,812 JPY	172,487,588 JPY	11,141,010,400 JPY	477,128,030 JPY	22,159,770 JPY	499,287,800 JPY
11.2020	11,698	10,469,061,050 JPY	151,305,250 JPY	10,620,366,300 JPY	499,461,762 JPY	21,182,338 JPY	520,644,100 JPY
12.2020	11,388	9,542,131,825 JPY	131,158,375 JPY	9,673,290,200 JPY	926,929,225 JPY	20,146,875 JPY	947,076,100 JPY
01.2021	10,961	8,795,943,469 JPY	112,885,431 JPY	8,908,828,900 JPY	746,188,356 JPY	18,272,944 JPY	764,461,300 JPY
02.2021	10,427	7,973,108,484 JPY	96,038,416 JPY	8,069,146,900 JPY	822,834,985 JPY	16,847,015 JPY	839,682,000 JPY
03.2021	9,628	7,021,971,053 JPY	80,744,847 JPY	7,102,715,900 JPY	951,137,431 JPY	15,293,569 JPY	966,431,000 JPY
04.2021	8,511	6,473,986,857 JPY	67,227,743 JPY	6,541,214,600 JPY	547,984,196 JPY	13,517,104 JPY	561,501,300 JPY
05.2021	7,965	5,869,186,411 JPY	54,812,089 JPY	5,923,998,500 JPY	604,800,446 JPY	12,415,654 JPY	617,216,100 JPY
06.2021	7,253	5,128,123,988 JPY	43,580,412 JPY	5,171,704,400 JPY	741,062,423 JPY	11,231,677 JPY	752,294,100 JPY
07.2021	6,471	4,319,697,305 JPY	33,855,495 JPY	4,353,552,800 JPY	808,426,683 JPY	9,724,917 JPY	818,151,600 JPY
08.2021	5,676	3,586,327,859 JPY	25,686,941 JPY	3,612,014,800 JPY	733,369,446 JPY	8,168,554 JPY	741,538,000 JPY
09.2021	4,780	2,612,585,490 JPY	18,860,710 JPY	2,631,446,200 JPY	973,742,369 JPY	6,826,231 JPY	980,568,600 JPY
10.2021	3,568	1,999,514,967 JPY	13,873,333 JPY	2,013,388,300 JPY	613,070,523 JPY	4,987,377 JPY	618,057,900 JPY
11.2021	2,793	1,233,373,143 JPY	10,018,257 JPY	1,243,391,400 JPY	766,141,824 JPY	3,855,076 JPY	769,996,900 JPY
12.2021	1,776	952,438,857 JPY	7,550,843 JPY	959,989,700 JPY	280,934,286 JPY	2,467,414 JPY	283,401,700 JPY
01.2022	1,522	750,879,485 JPY	5,631,415 JPY	756,510,900 JPY	201,559,372 JPY	1,919,428 JPY	203,478,800 JPY
02.2022	1,301	555,026,620 JPY	4,114,180 JPY	559,140,800 JPY	195,852,865 JPY	1,517,235 JPY	197,370,100 JPY
03.2022	1,051	316,730,760 JPY	2,982,440 JPY	319,713,200 JPY	238,295,860 JPY	1,131,740 JPY	239,427,600 JPY
04.2022	705	221,039,674 JPY	2,277,826 JPY	223,317,500 JPY	95,691,086 JPY	704,614 JPY	96,395,700 JPY
05.2022	571	150,390,420 JPY	1,766,080 JPY	152,156,500 JPY	70,649,254 JPY	511,746 JPY	71,161,000 JPY
06.2022	448	94,384,665 JPY	1,388,335 JPY	95,773,000 JPY	56,005,755 JPY	377,745 JPY	56,383,500 JPY
07.2022	354	72,695,675 JPY	1,126,525 JPY	73,822,200 JPY	21,688,990 JPY	261,810 JPY	21,950,800 JPY
08.2022	312	58,409,710 JPY	916,090 JPY	59,325,800 JPY	14,285,965 JPY	210,435 JPY	14,496,400 JPY
09.2022	231	49,352,357 JPY	740,143 JPY	50,092,500 JPY	9,057,353 JPY	175,947 JPY	9,233,300 JPY
10.2022	181	42,047,554 JPY	588,846 JPY	42,636,400 JPY	7,304,803 JPY	151,297 JPY	7,456,100 JPY
11.2022	154	35,640,854 JPY	458,646 JPY	36,099,500 JPY	6,406,700 JPY	130,200 JPY	6,536,900 JPY
12.2022	123	26,308,590 JPY	347,410 JPY	26,656,000 JPY	9,332,264 JPY	111,236 JPY	9,443,500 JPY
01.2023	101	20,532,393 JPY	264,907 JPY	20,797,300 JPY	5,776,197 JPY	82,503 JPY	5,858,700 JPY
02.2023	88	16,693,248 JPY	200,152 JPY	16,893,400 JPY	3,839,145 JPY	64,755 JPY	3,903,900 JPY
03.2023	70	13,575,718 JPY	147,282 JPY	13,723,000 JPY	3,117,530 JPY	52,870 JPY	3,170,400 JPY
04.2023	60	10,775,854 JPY	104,146 JPY	10,880,000 JPY	2,799,864 JPY	43,136 JPY	2,843,000 JPY
05.2023	53	8,233,551 JPY	69,849 JPY	8,303,400 JPY	2,542,303 JPY	34,297 JPY	2,576,600 JPY
06.2023	40	5,690,880 JPY	43,620 JPY	5,734,500 JPY	2,542,671 JPY	26,229 JPY	2,568,900 JPY
07.2023	30	3,784,805 JPY	25,495 JPY	3,810,300 JPY	1,906,075 JPY	18,125 JPY	1,924,200 JPY
08.2023	28	2,079,059 JPY	13,441 JPY	2,092,500 JPY	1,705,746 JPY	12,054 JPY	1,717,800 JPY
09.2023	22	1,006,479 JPY	6,821 JPY	1,013,300 JPY	1,072,580 JPY	6,620 JPY	1,079,200 JPY
10.2023	10	537,185 JPY	3,615 JPY	540,800 JPY	469,294 JPY	3,206 JPY	472,500 JPY
11.2023	5	353,496 JPY	1,904 JPY	355,400 JPY	183,689 JPY	1,711 JPY	185,400 JPY
12.2023	2	162,822 JPY	778 JPY	163,600 JPY	190,674 JPY	1,126 JPY	191,800 JPY
01.2024	2	81,541 JPY	259 JPY	81,800 JPY	81,281 JPY	519 JPY	81,800 JPY
02.2024	2	0 JPY	0 JPY	0 JPY	81,541 JPY	259 JPY	81,800 JPY

Run Out Schedule

ROS on the relevant EoP on 2017/10/10

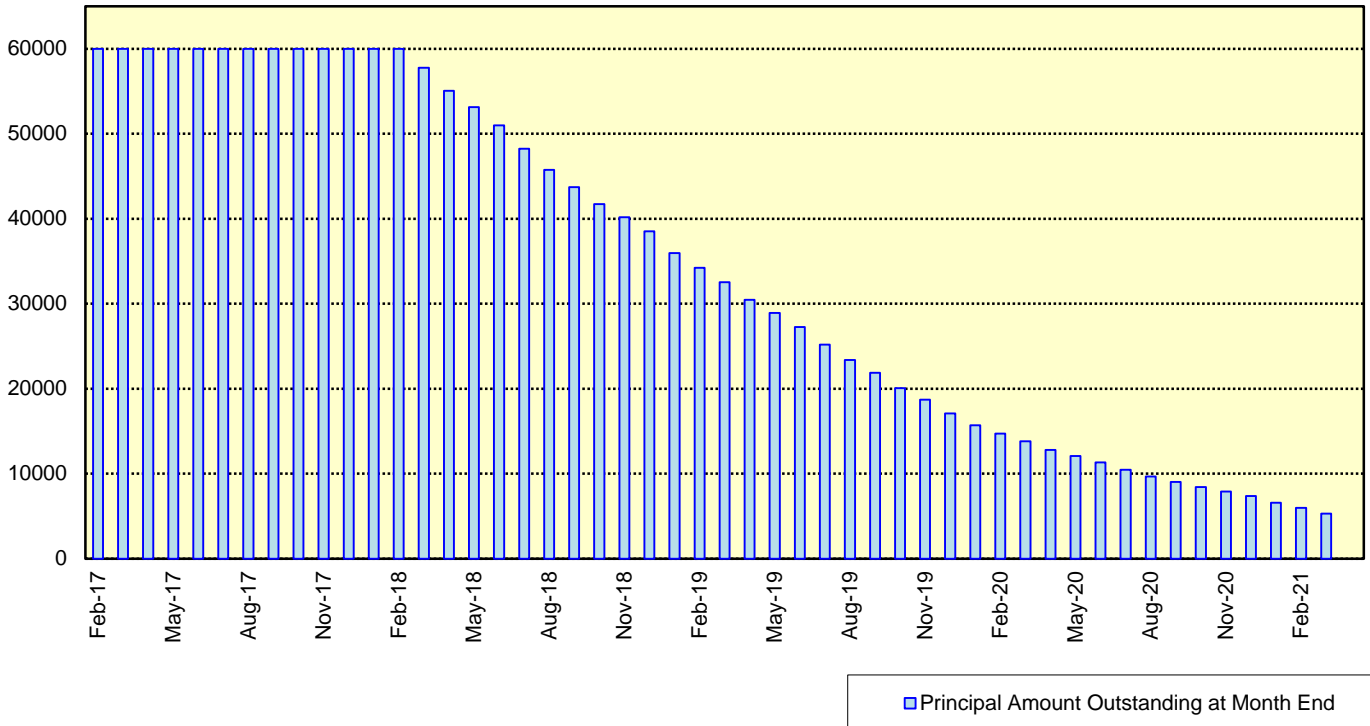
Next Payment Month	Number of Contracts	ABS Outstanding Principal	ABS Outstanding Interest	Outstanding Installment	ABS Remaining Principal	ABS Remaining Interest	ABS Remaining Installment
09.2017	34,227	65,574,032,484 JPY	2,562,831,316 JPY	68,136,863,800 JPY	0 JPY	0 JPY	0 JPY
10.2017	34,227	64,264,237,966 JPY	2,446,229,134 JPY	66,710,467,100 JPY	1,309,794,518 JPY	116,602,182 JPY	1,426,396,700 JPY
11.2017	33,983	62,879,697,028 JPY	2,331,978,372 JPY	65,211,675,400 JPY	1,384,540,938 JPY	114,250,762 JPY	1,498,791,700 JPY
12.2017	33,653	60,221,580,211 JPY	2,220,199,389 JPY	62,441,779,600 JPY	2,658,116,817 JPY	111,778,983 JPY	2,769,895,800 JPY
01.2018	33,132	58,555,626,002 JPY	2,113,117,598 JPY	60,668,743,600 JPY	1,665,954,209 JPY	107,081,791 JPY	1,773,036,000 JPY
02.2018	32,725	56,979,581,542 JPY	2,009,060,458 JPY	58,988,642,000 JPY	1,576,044,460 JPY	104,057,140 JPY	1,680,101,600 JPY
03.2018	32,091	54,866,822,683 JPY	1,907,738,017 JPY	56,774,560,700 JPY	2,112,758,859 JPY	101,322,441 JPY	2,214,081,300 JPY
04.2018	30,922	53,567,265,379 JPY	1,809,712,421 JPY	55,376,977,800 JPY	1,299,557,304 JPY	98,025,596 JPY	1,397,582,900 JPY
05.2018	30,552	52,065,362,054 JPY	1,714,001,146 JPY	53,779,363,200 JPY	1,501,903,325 JPY	95,711,275 JPY	1,597,614,600 JPY
06.2018	29,969	49,865,606,705 JPY	1,620,859,795 JPY	51,486,466,500 JPY	2,199,755,349 JPY	93,141,351 JPY	2,292,896,700 JPY
07.2018	29,158	47,855,509,364 JPY	1,531,486,536 JPY	49,386,995,900 JPY	2,010,097,341 JPY	89,373,259 JPY	2,099,470,600 JPY
08.2018	28,564	46,330,805,474 JPY	1,445,740,426 JPY	47,776,545,900 JPY	1,524,703,890 JPY	85,746,110 JPY	1,610,450,000 JPY
09.2018	28,037	44,648,732,239 JPY	1,362,728,761 JPY	46,011,461,000 JPY	1,682,073,235 JPY	83,011,665 JPY	1,765,084,900 JPY
10.2018	27,191	43,382,851,577 JPY	1,282,651,923 JPY	44,665,503,500 JPY	1,265,880,662 JPY	80,076,838 JPY	1,345,957,500 JPY
11.2018	26,714	42,035,809,170 JPY	1,204,880,730 JPY	43,240,689,900 JPY	1,347,042,407 JPY	77,771,193 JPY	1,424,813,600 JPY
12.2018	26,107	39,468,867,672 JPY	1,129,496,528 JPY	40,598,364,200 JPY	2,566,941,498 JPY	75,384,202 JPY	2,642,325,700 JPY
01.2019	25,240	37,855,068,514 JPY	1,058,706,786 JPY	38,913,775,300 JPY	1,613,799,158 JPY	70,789,742 JPY	1,684,588,900 JPY
02.2019	24,693	36,290,481,002 JPY	990,825,898 JPY	37,281,306,900 JPY	1,564,587,512 JPY	67,880,888 JPY	1,632,468,400 JPY
03.2019	23,922	34,163,192,274 JPY	925,716,926 JPY	35,088,909,200 JPY	2,127,288,728 JPY	65,108,972 JPY	1,927,397,700 JPY
04.2019	22,675	32,739,724,951 JPY	864,258,149 JPY	33,603,983,100 JPY	1,423,467,323 JPY	61,458,777 JPY	1,484,926,100 JPY
05.2019	22,119	31,157,172,588 JPY	805,232,712 JPY	31,962,405,300 JPY	1,582,552,363 JPY	59,025,437 JPY	1,641,577,800 JPY
06.2019	21,379	28,926,297,643 JPY	748,864,357 JPY	29,675,162,000 JPY	2,230,874,945 JPY	56,368,355 JPY	2,287,243,300 JPY
07.2019	20,429	27,022,375,820 JPY	696,204,980 JPY	27,718,580,800 JPY	1,903,921,823 JPY	52,659,377 JPY	1,956,581,200 JPY
08.2019	19,734	25,450,433,017 JPY	646,770,783 JPY	26,097,203,800 JPY	1,571,942,803 JPY	49,434,197 JPY	1,621,377,000 JPY
09.2019	19,008	23,459,859,964 JPY	599,864,836 JPY	24,059,720,800 JPY	1,990,577,053 JPY	46,905,947 JPY	2,037,483,000 JPY
10.2019	17,890	22,037,239,461 JPY	556,005,039 JPY	22,593,244,500 JPY	1,422,616,503 JPY	43,859,797 JPY	1,466,476,300 JPY
11.2019	17,154	20,281,663,560 JPY	514,460,240 JPY	20,796,123,800 JPY	1,755,575,901 JPY	41,544,799 JPY	1,797,120,700 JPY
12.2019	16,183	18,812,590,742 JPY	475,579,858 JPY	19,288,170,600 JPY	1,469,072,818 JPY	38,880,382 JPY	1,507,953,200 JPY
01.2020	15,685	17,870,328,199 JPY	439,380,801 JPY	18,309,709,000 JPY	942,262,543 JPY	36,199,057 JPY	1,621,377,000 JPY
02.2020	15,306	17,001,316,382 JPY	404,939,618 JPY	17,406,256,000 JPY	869,011,817 JPY	34,441,183 JPY	903,453,000 JPY
03.2020	14,818	15,982,966,841 JPY	372,081,659 JPY	16,355,048,500 JPY	1,018,349,541 JPY	32,857,959 JPY	1,051,207,500 JPY
04.2020	14,127	15,344,903,630 JPY	340,989,170 JPY	15,685,892,800 JPY	638,063,211 JPY	31,092,489 JPY	669,155,700 JPY
05.2020	13,893	14,679,424,908 JPY	311,102,592 JPY	14,990,527,500 JPY	665,478,722 JPY	29,866,578 JPY	695,365,300 JPY
06.2020	13,549	13,835,058,198 JPY	282,487,702 JPY	14,117,545,900 JPY	844,366,710 JPY	28,614,890 JPY	872,981,600 JPY
07.2020	13,214	13,020,839,047 JPY	255,531,153 JPY	13,276,370,200 JPY	814,219,151 JPY	26,956,549 JPY	841,175,700 JPY
08.2020	12,962	12,449,025,978 JPY	230,190,822 JPY	12,679,216,800 JPY	571,813,069 JPY	25,340,331 JPY	597,153,400 JPY
09.2020	12,684	11,899,968,925 JPY	206,001,175 JPY	12,105,970,100 JPY	549,057,053 JPY	24,189,647 JPY	573,246,700 JPY
10.2020	12,326	11,408,344,932 JPY	182,941,868 JPY	11,591,286,800 JPY	491,623,993 JPY	23,059,307 JPY	514,683,300 JPY
11.2020	12,071	10,897,380,303 JPY	160,889,197 JPY	11,058,269,500 JPY	510,964,629 JPY	22,052,671 JPY	533,017,300 JPY
12.2020	11,761	9,942,851,572 JPY	139,895,928 JPY	10,082,747,500 JPY	954,528,731 JPY	20,993,269 JPY	975,522,000 JPY
01.2021	11,329	9,180,786,551 JPY	120,831,549 JPY	9,301,618,100 JPY	762,065,021 JPY	19,064,379 JPY	781,129,400 JPY
02.2021	10,789	8,343,553,889 JPY	103,224,011 JPY	8,446,777,900 JPY	837,232,662 JPY	17,607,538 JPY	854,840,200 JPY
03.2021	9,983	7,369,735,092 JPY	87,200,108 JPY	7,456,935,200 JPY	973,818,797 JPY	16,023,903 JPY	989,842,700 JPY
04.2021	8,845	6,805,985,513 JPY	72,997,787 JPY	6,878,983,300 JPY	563,749,579 JPY	14,202,321 JPY	577,951,900 JPY
05.2021	8,286	6,187,564,998 JPY	59,926,602 JPY	6,247,491,600 JPY	618,420,515 JPY	13,071,185 JPY	631,491,700 JPY
06.2021	7,567	5,422,147,445 JPY	48,067,355 JPY	5,470,214,800 JPY	765,417,553 JPY	11,859,247 JPY	777,276,800 JPY
07.2021	6,769	4,596,510,331 JPY	37,761,369 JPY	4,634,271,700 JPY	825,637,114 JPY	10,305,986 JPY	835,943,100 JPY
08.2021	5,965	3,847,872,864 JPY	29,045,136 JPY	3,876,918,000 JPY	748,637,467 JPY	8,716,233 JPY	757,353,700 JPY
09.2021	5,062	2,858,545,920 JPY	21,698,880 JPY	2,880,244,800 JPY	989,326,944 JPY	7,346,256 JPY	996,673,200 JPY
10.2021	3,841	2,231,561,079 JPY	16,223,721 JPY	2,247,784,800 JPY	626,984,841 JPY	5,475,159 JPY	632,460,000 JPY
11.2021	3,063	1,447,464,045 JPY	11,910,655 JPY	1,459,374,700 JPY	784,097,034 JPY	4,313,066 JPY	788,410,100 JPY
12.2021	2,037	1,137,559,613 JPY	9,016,387 JPY	1,146,576,000 JPY	309,904,432 JPY	2,894,268 JPY	312,798,700 JPY
01.2022	1,766	905,754,546 JPY	6,724,854 JPY	912,479,400 JPY	231,805,067 JPY	2,291,533 JPY	234,096,600 JPY
02.2022	1,516	682,309,995 JPY	4,899,305 JPY	687,209,300 JPY	223,444,551 JPY	1,825,549 JPY	225,270,100 JPY
03.2022	1,237	407,652,187 JPY	3,514,013 JPY	411,166,200 JPY	274,657,808 JPY	1,385,292 JPY	276,043,100 JPY
04.2022	847	291,134,605 JPY	2,620,295 JPY	293,754,900 JPY	116,517,582 JPY	893,718 JPY	117,411,300 JPY
05.2022	685	192,487,277 JPY	1,959,923 JPY	194,447,200 JPY	98,647,328 JPY	660,372 JPY	99,307,700 JPY
06.2022	522	113,551,810 JPY	1,491,890 JPY	115,043,700 JPY	78,935,467 JPY	468,033 JPY	79,403,500 JPY
07.2022	391	75,567,524 JPY	1,184,576 JPY	76,752,100 JPY	37,984,286 JPY	307,314 JPY	38,291,600 JPY
08.2022	323	60,884,207 JPY	967,093 JPY	61,851,300 JPY	14,683,317 JPY	217,483 JPY	14,900,800 JPY
09.2022	242	51,488,559 JPY	785,041 JPY	52,273,600 JPY	9,395,648 JPY	182,052 JPY	9,577,700 JPY
10.2022	192	43,844,669 JPY	628,431 JPY	44,473,100 JPY	7,643,890 JPY	156,610 JPY	7,800,500 JPY
11.2022	164	37,128,184 JPY	493,716 JPY	37,621,900 JPY	6,716,485 JPY	134,715 JPY	6,851,200 JPY
12.2022	132	27,631,719 JPY	378,681 JPY	28,010,400 JPY	9,496,465 JPY	115,035 JPY	9,611,500 JPY
01.2023	109	21,626,234 JPY	292,666 JPY	21,918,900 JPY	6,005,485 JPY	86,015 JPY	6,091,500 JPY
02.2023	95	17,567,845 JPY	224,955 JPY	17,792,800 JPY	4,058,389 JPY	67,711 JPY	4,126,100 JPY
03.2023	77	14,216,243 JPY	169,657 JPY	14,385,900 JPY	3,351,602 JPY	55,298 JPY	3,406,900 JPY
04.2023	65	11,252,501 JPY	124,699 JPY	11,377,200 JPY	2,963,742 JPY	44,958 JPY	3,008,700 JPY
05.2023	56	8,600,687 JPY	89,013 JPY	8,689,700 JPY	2,651,814 JPY	35,686 JPY	2,687,500 JPY
06.2023	41	6,374,945 JPY	61,655 JPY	6,436,600 JPY	2,225,742 JPY	27,358 JPY	2,253,100 JPY
07.2023	30	4,302,949 JPY	41,351 JPY	4,344,300 JPY	2,071,996 JPY	20,304 JPY	2,092,300 JPY
08.2023	28	2,620,753 JPY	27,647 JPY	2,648,400 JPY	1,682,196 JPY	13,704 JPY	1,695,900 JPY
09.2023	22	1,571,798 JPY	19,302 JPY	1,591,100 JPY	1,048,955 JPY	8,345 JPY	1,057,300 JPY
10.2023	10	1,126,205 JPY	14,295 JPY	1,140,500 JPY	445,593 JPY	5,007 JPY	450,600 JPY
11.2023	5	966,293 JPY	10,707 JPY	977,000 JPY	159,912 JPY	3,588 JPY	163,500 JPY
12.2023	3	557,371 JPY	7,629 JPY	565,000 JPY	408,922 JPY	3,078 JPY	412,000 JPY
01.2024	3	447,147 JPY	5,853 JPY	453,000 JPY	110,224 JPY	1,776 JPY	112,000 JPY
02.2024	3	336,571 JPY	4,429 JPY	341,000 JPY	110,576 JPY	1,424 JPY	112,000 JPY
03.2024	1	307,443 JPY	3,357 JPY	310,800 JPY	29,128 JPY	1,072 JPY	30,200 JPY
04.2024	1	278,222 JPY	2,378 JPY	280,600 JPY	29,221 JPY	979 JPY	30,200 JPY
05.2024	1	248,908 JPY	1,492 JPY	250,400 JPY	29,314 JPY	886 JPY	30,200 JPY
06.2024	1	219,501 JPY	699 JPY	220,200 JPY	29,407 JPY	793 JPY	30,200 JPY
07.2024	1	0 JPY	0 JPY	0 JPY	219,501 JPY	699 JPY	220,200 JPY

**Expected Amortisation**

**Expected Amortization to the Second Trust**

JPY mil.

Assuming a Clean-Up Call at 10% of the Initial Outstanding Balance, annual prepayments of 10% and 0% defaults.





**Distribution by Sub-Servicer**

Sub-Servicer	Number of Loans	Percentage of Loans	Outstanding Principal Balance	Percentage of Balance
Cedyna	20,291	59.28 %	39,826,737,724 JPY	60.74 %
Jaccs	13,936	40.72 %	25,747,294,760 JPY	39.26 %
<b>Total</b>	<b>34,227</b>	<b>100.00 %</b>	<b>65,574,032,484 JPY</b>	<b>100.00 %</b>

**Distribution by Brand**

Make	Number of Loans	Percentage of Loans	Outstanding Discounted Principal Balance	Percentage of Balance
VW	21,912	64.02 %	34,467,889,952 JPY	52.56 %
Audi	12,278	35.87 %	30,971,907,760 JPY	47.23 %
Bentley	15	0.04 %	89,187,677 JPY	0.14 %
Lamborghini	5	0.01 %	29,965,065 JPY	0.05 %
Other	17	0.05 %	15,082,030 JPY	0.02 %
<b>Total</b>	<b>34,227</b>	<b>100.00 %</b>	<b>65,574,032,484 JPY</b>	<b>100.00 %</b>

**Distribution by New and Used**
**Distribution by New and Used**

New or Used	Number of Loans	Percentage of Loans	Outstanding Discounted Principal Balance	Percentage of Balance
New	22,837	66.72 %	50,835,267,963 JPY	77.52 %
Used	8,615	25.17 %	13,317,587,931 JPY	20.31 %
Used (Prolonged)	2,775	8.11 %	1,421,176,590 JPY	2.17 %
<b>Total</b>	<b>34,227</b>	<b>100.00 %</b>	<b>65,574,032,484 JPY</b>	<b>100.00 %</b>

**Distribution by Brand New and Used**

New or Used	Number of Loans	Percentage of Loans	Outstanding Discounted Principal Balance	Percentage of Balance
VW New	15,053	43.98 %	28,157,438,235 JPY	42.94 %
VW Used	4,670	13.64 %	5,474,559,229 JPY	8.35 %
VW Used (Prolonged)	2,189	6.40 %	835,892,488 JPY	1.27 %
Audi New	7,772	22.71 %	22,606,188,133 JPY	34.47 %
Audi Used	3,920	11.45 %	7,780,435,525 JPY	11.87 %
Audi Used (Prolonged)	586	1.71 %	585,284,102 JPY	0.89 %
Other	37	0.11 %	134,234,772 JPY	0.20 %
<b>Total</b>	<b>34,227</b>	<b>100.00 %</b>	<b>65,574,032,484 JPY</b>	<b>100.00 %</b>

## Distribution by Product Type

### Loan Type List

Loan Type	Description
100	Volkswagen Owner's Plan
100	Audi Owner's Plan
100	Lamborghini Auto Loan
100	Bentley Auto Loan
101	Twin Loan
105	Refinanced Volkswagen Solutions
106	Refinanced Volkswagen Das Welt Auto with refinance option *
106	Refinanced Audi S-Loan/ S-Loan Plus
106	Refinanced Lamborghini Hyper Premium Plan
106	Refinanced Bentley My Flying B
140	Volkswagen Solutions
150	Volkswagen Das Welt Auto with refinance option **
150	Audi S-Loan
150	Lamborghini Hyper Premium Plan
150	Bentley My Flying B
151	Audi S-Loan Plus

(\*) The name was changed from "Refinanced Volkswagen GUC with refinance option" effective from 1 February 2012.

No other changes were made to auto loan agreements.

(\*\*) The name was changed from "Volkswagen GUC with refinance option" effective from 1 February 2012.

No other changes were made to auto loan agreements.

### Product Type

Loan Type	Number of Loans	Percentage of Loans	Outstanding Discounted Principal Balance	Percentage of Balance
100	4,841	14.14 %	6,461,312,839 JPY	9.85 %
101	0	0.00 %	0 JPY	0.00 %
105	2,111	6.17 %	819,376,049 JPY	1.25 %
106	664	1.94 %	601,800,541 JPY	0.92 %
140-VFJ	2,257	6.59 %	4,132,713,843 JPY	6.30 %
140-Dealer	11,634	33.99 %	22,463,697,612 JPY	34.26 %
150	12,024	35.13 %	29,068,586,867 JPY	44.33 %
151	696	2.03 %	2,026,544,733 JPY	3.09 %
<b>Total</b>	<b>34,227</b>	<b>100.00 %</b>	<b>65,574,032,484 JPY</b>	<b>100.00 %</b>

### Credit Type

Credit Type	Number of Loans	Percentage of Loans	Outstanding Discounted Principal Balance	Percentage of Balance
Balloon Type Loan	26,611	77.75 %	57,691,543,055 JPY	87.98 %
Equal Instalment Type Loan	7,616	22.25 %	7,882,489,429 JPY	12.02 %
<b>Total</b>	<b>34,227</b>	<b>100.00 %</b>	<b>65,574,032,484 JPY</b>	<b>100.00 %</b>

**Distribution by RV**

Loan Type	Number of Loans	Percentage of Balance	Outstanding Discounted Principal Balance
100/101/105/106	7,616	12.02 %	7,882,489,429 JPY
140-VFJ (excl. balloon)		3.41 %	2,237,681,897 JPY
140-VFJ (balloon)		2.89 %	1,895,031,946 JPY
140-VFJ	2,257	6.30 %	4,132,713,843 JPY
140-Dealer (excl. balloon)		18.74 %	12,290,408,837 JPY
140-Dealer (balloon)		15.51 %	10,173,288,775 JPY
140-Dealer	11,634	34.26 %	22,463,697,612 JPY
150 (excl. balloon)		21.58 %	14,153,651,425 JPY
150 (balloon)		22.75 %	14,914,935,442 JPY
150	12,024	44.33 %	29,068,586,867 JPY
151 (excl. balloon)		1.06 %	693,851,755 JPY
151 (balloon)		2.03 %	1,332,692,978 JPY
151	696	3.09 %	2,026,544,733 JPY
<b>Total</b>	<b>34,227</b>	<b>100.00 %</b>	<b>65,574,032,484 JPY</b>

Type of Payment Portion	Percentage of Balance	Outstanding Discounted Principal Balance
Monthly Installment Portion	56.82 %	37,258,083,343 JPY
Balloon Portion	43.18 %	28,315,949,141 JPY
<b>Total</b>	<b>100.00 %</b>	<b>65,574,032,484 JPY</b>

**Distribution by Brand New and Used**
**Audi**

New or Used	Number of Loans	Percentage of Loans	Outstanding Discounted Principal Balance	Percentage of Balance
New	7,772	63.30 %	22,606,188,133 JPY	72.99 %
Used	4,506	36.70 %	8,365,719,627 JPY	27.01 %
<b>Total</b>	<b>12,278</b>	<b>100.00 %</b>	<b>30,971,907,760 JPY</b>	<b>100.00 %</b>

**Bentley**

New or Used	Number of Loans	Percentage of Loans	Outstanding Discounted Principal Balance	Percentage of Balance
New	9	60.00 %	56,935,702 JPY	63.84 %
Used	6	40.00 %	32,251,975 JPY	36.16 %
<b>Total</b>	<b>15</b>	<b>100.00 %</b>	<b>89,187,677 JPY</b>	<b>100.00 %</b>

**Lamborghini**

New or Used	Number of Loans	Percentage of Loans	Outstanding Discounted Principal Balance	Percentage of Balance
New	3	60.00 %	14,705,893 JPY	49.08 %
Used	2	40.00 %	15,259,172 JPY	50.92 %
<b>Total</b>	<b>5</b>	<b>100.00 %</b>	<b>29,965,065 JPY</b>	<b>100.00 %</b>

**VW**

New or Used	Number of Loans	Percentage of Loans	Outstanding Discounted Principal Balance	Percentage of Balance
New	15,053	68.70 %	28,157,438,235 JPY	81.69 %
Used	6,859	31.30 %	6,310,451,717 JPY	18.31 %
<b>Total</b>	<b>21,912</b>	<b>100.00 %</b>	<b>34,467,889,952 JPY</b>	<b>100.00 %</b>

**OTHER**

New or Used	Number of Loans	Percentage of Loans	Outstanding Discounted Principal Balance	Percentage of Balance
New	0	0.00 %	0 JPY	0.00 %
Used	17	100.00 %	15,082,030 JPY	100.00 %
<b>Total</b>	<b>17</b>	<b>100.00 %</b>	<b>15,082,030 JPY</b>	<b>100.00 %</b>

**Distribution by Customer Type**

**Customer Type**

Customer Type	Number of Loans	Percentage of Loans	Outstanding Discounted Principal Balance	Percentage of Balance
Retail	30,928	90.36 %	56,279,879,730 JPY	85.83 %
Corporate	3,299	9.64 %	9,294,152,754 JPY	14.17 %
<b>Total</b>	<b>34,227</b>	<b>100.00 %</b>	<b>65,574,032,484 JPY</b>	<b>100.00 %</b>

**Distribution by Outstanding Discounted Principal Balance**

Outstanding Discounted Principal Balance	Number of Loans	Percentage of Loans	Outstanding Discounted Principal Balance	Percentage of Balance
<= 500,000 JPY	3,195	9.33 %	882,417,452 JPY	1.35 %
500,001 JPY - 1,000,000 JPY	4,513	13.19 %	3,456,955,421 JPY	5.27 %
1,000,001 JPY - 1,500,000 JPY	6,501	18.99 %	8,205,257,632 JPY	12.51 %
1,500,001 JPY - 2,000,000 JPY	6,415	18.74 %	11,164,334,314 JPY	17.03 %
2,000,001 JPY - 2,500,000 JPY	5,071	14.82 %	11,353,027,163 JPY	17.31 %
2,500,001 JPY - 3,000,000 JPY	3,450	10.08 %	9,403,145,112 JPY	14.34 %
3,000,001 JPY - 3,500,000 JPY	1,866	5.45 %	6,029,449,126 JPY	9.19 %
3,500,001 JPY - 4,000,000 JPY	1,071	3.13 %	3,993,589,590 JPY	6.09 %
4,000,001 JPY - 4,500,000 JPY	728	2.13 %	3,083,941,273 JPY	4.70 %
4,500,001 JPY - 5,000,000 JPY	495	1.45 %	2,344,753,097 JPY	3.58 %
5,000,001 JPY - 6,000,000 JPY	509	1.49 %	2,761,000,944 JPY	4.21 %
6,000,001 JPY - 7,000,000 JPY	237	0.69 %	1,519,387,314 JPY	2.32 %
7,000,001 JPY - 8,000,000 JPY	115	0.34 %	853,820,056 JPY	1.30 %
8,000,001 JPY - 9,000,000 JPY	50	0.15 %	419,338,775 JPY	0.64 %
9,000,001 JPY - 10,000,000 JPY	11	0.03 %	103,615,215 JPY	0.16 %
>= 10,000,001 JPY	0	0.00 %	0 JPY	0.00 %
<b>Total</b>	<b>34,227</b>	<b>100.00 %</b>	<b>65,574,032,484 JPY</b>	<b>100.00 %</b>

**Statistics**

<b>Minimum</b> Outstanding Discounted Principal Balance	7,378 JPY
<b>Maximum</b> Outstanding Discounted Principal Balance	9,834,884 JPY
<b>Average</b> Outstanding Discounted Principal Balance	1,915,857 JPY



**Distribution by Original Principal Amount**

Original Principal Balance	Number of Loans	Percentage of Loans	Outstanding Discounted Principal Balance	Percentage of Balance
<= 500,000 JPY	525	1.53 %	101,873,252 JPY	0.16 %
500,001 JPY - 1,000,000 JPY	2,860	8.36 %	1,233,337,707 JPY	1.88 %
1,000,001 JPY - 1,500,000 JPY	3,739	10.92 %	3,233,234,868 JPY	4.93 %
1,500,001 JPY - 2,000,000 JPY	5,446	15.91 %	6,865,308,845 JPY	10.47 %
2,000,001 JPY - 2,500,000 JPY	5,581	16.31 %	9,101,757,875 JPY	13.88 %
2,500,001 JPY - 3,000,000 JPY	5,312	15.52 %	10,649,312,402 JPY	16.24 %
3,000,001 JPY - 3,500,000 JPY	3,674	10.73 %	8,733,179,420 JPY	13.32 %
3,500,001 JPY - 4,000,000 JPY	2,446	7.15 %	6,730,753,299 JPY	10.26 %
4,000,001 JPY - 4,500,000 JPY	1,361	3.98 %	4,304,356,303 JPY	6.56 %
4,500,001 JPY - 5,000,000 JPY	1,009	2.95 %	3,575,837,837 JPY	5.45 %
5,000,001 JPY - 6,000,000 JPY	1,062	3.10 %	4,346,179,187 JPY	6.63 %
6,000,001 JPY - 7,000,000 JPY	600	1.75 %	2,871,349,219 JPY	4.38 %
7,000,001 JPY - 8,000,000 JPY	279	0.82 %	1,578,094,386 JPY	2.41 %
8,000,001 JPY - 9,000,000 JPY	146	0.43 %	919,625,029 JPY	1.40 %
9,000,001 JPY - 10,000,000 JPY	78	0.23 %	572,408,412 JPY	0.87 %
>= 10,000,001 JPY	109	0.32 %	757,424,443 JPY	1.16 %
<b>Total</b>	<b>34,227</b>	<b>100.00 %</b>	<b>65,574,032,484 JPY</b>	<b>100.00 %</b>

**Statistics**

<b>Minimum</b> Original Principal Balance	90,000 JPY
<b>Maximum</b> Original Principal Balance	25,000,000 JPY
<b>Average</b> Original Principal Balance	2,676,054 JPY

**Distribution by Interest Rate paid by the Obligor**

Interest Rate paid by the Obligor	Number of Loans	Percentage of Loans	Outstanding Discounted Principal Balance	Percentage of Balance
< 0.900 %	2,062	6.02 %	3,979,038,682 JPY	6.07 %
0.900 % < 1.500 %	6,186	18.07 %	14,806,281,166 JPY	22.58 %
1.500 % < 2.000 %	11,439	33.42 %	24,593,168,045 JPY	37.50 %
2.000 % < 2.500 %	321	0.94 %	572,581,019 JPY	0.87 %
2.500 % < 3.000 %	6,928	20.24 %	12,925,426,653 JPY	19.71 %
3.000 % < 3.500 %	1,241	3.63 %	1,080,505,031 JPY	1.65 %
3.500 % < 4.000 %	6,012	17.57 %	7,554,352,554 JPY	11.52 %
4.000 % < 4.500 %	38	0.11 %	62,679,334 JPY	0.10 %
4.500 % < 5.000 %	0	0.00 %	0 JPY	0.00 %
5.000 % or more	0	0.00 %	0 JPY	0.00 %
<b>Total</b>	<b>34,227</b>	<b>100.00 %</b>	<b>65,574,032,484 JPY</b>	<b>100.00 %</b>

<b>Statistics</b>	
<b>Minimum</b> Interest Rate	0.00 %
<b>Maximum</b> Interest Rate	4.49 %
<b>Weighted Average</b> Interest Rate	2.05 %

**Distribution by Original Term**

Length of Original Term (months)	Number of Loans	Percentage of Loans	Outstanding Discounted Principal Balance	Percentage of Balance
6 - 12	109	0.32 %	20,416,783 JPY	0.03 %
13 - 18	164	0.48 %	37,818,846 JPY	0.06 %
19 - 24	1,996	5.83 %	968,403,008 JPY	1.48 %
25 - 30	113	0.33 %	72,429,073 JPY	0.11 %
31 - 36	14,022	40.97 %	28,790,995,058 JPY	43.91 %
37 - 42	83	0.24 %	73,261,491 JPY	0.11 %
43 - 48	1,713	5.00 %	2,403,209,740 JPY	3.66 %
49 - 54	33	0.10 %	43,882,615 JPY	0.07 %
55 - 60	15,078	44.05 %	31,232,506,414 JPY	47.63 %
61 - 66	21	0.06 %	33,090,439 JPY	0.05 %
67 - 72	703	2.05 %	1,357,980,648 JPY	2.07 %
73 - 84	192	0.56 %	540,038,369 JPY	0.82 %
<b>Total</b>	<b>34,227</b>	<b>100.00 %</b>	<b>65,574,032,484 JPY</b>	<b>100.00 %</b>

<b>Statistics</b>	
<b>Minimum</b> Original Term in months	6
<b>Maximum</b> Original Term in months	84
<b>Weighted Average</b> Original Term in months	48.84

**Distribution by Remaining Term**

Length of Remaining Term (months)	Number of Loans	Percentage of Loans	Outstanding Discounted Principal Balance	Percentage of Balance
<= 12	7,036	20.56 %	7,871,171,390 JPY	12.00 %
13 - 18	4,516	13.19 %	7,290,917,258 JPY	11.12 %
19 - 24	4,785	13.98 %	10,402,798,684 JPY	15.86 %
25 - 30	3,763	10.99 %	8,110,699,373 JPY	12.37 %
31 - 36	1,801	5.26 %	3,452,282,489 JPY	5.26 %
37 - 42	3,481	10.17 %	7,254,241,849 JPY	11.06 %
43 - 48	5,004	14.62 %	11,366,978,471 JPY	17.33 %
49 - 54	2,994	8.75 %	7,603,513,009 JPY	11.60 %
55 - 60	655	1.91 %	1,682,856,612 JPY	2.57 %
61 - 66	127	0.37 %	321,352,358 JPY	0.49 %
67 - 72	55	0.16 %	182,308,472 JPY	0.28 %
73 - 84	10	0.03 %	34,912,519 JPY	0.05 %
<b>Total</b>	<b>34,227</b>	<b>100.00 %</b>	<b>65,574,032,484 JPY</b>	<b>100.00 %</b>

<b>Statistics</b>	
<b>Minimum</b> Remaining Term in months	1
<b>Maximum</b> Remaining Term in months	82
<b>Weighted Average</b> Remaining Term in months	31.62

**Distribution by Seasoning**

Seasoning (months)	Number of Loans	Percentage of Loans	Outstanding Discounted Principal Balance	Percentage of Balance
<= 12	9,812	28.67 %	22,522,172,517 JPY	34.35 %
13 - 18	10,363	30.28 %	21,336,815,442 JPY	32.54 %
19 - 24	5,627	16.44 %	10,312,468,159 JPY	15.73 %
25 - 30	3,788	11.07 %	5,846,122,512 JPY	8.92 %
31 - 36	2,351	6.87 %	3,153,582,151 JPY	4.81 %
37 - 42	900	2.63 %	1,064,984,486 JPY	1.62 %
43 - 48	767	2.24 %	871,280,189 JPY	1.33 %
49 - 54	438	1.28 %	363,829,117 JPY	0.55 %
55 - 60	163	0.48 %	97,915,334 JPY	0.15 %
61 - 66	10	0.03 %	3,438,787 JPY	0.01 %
67 - 72	8	0.02 %	1,423,790 JPY	0.00 %
73 - 84	0	0.00 %	0 JPY	0.00 %
<b>Total</b>	<b>34,227</b>	<b>100.00 %</b>	<b>65,574,032,484 JPY</b>	<b>100.00 %</b>

Statistics	
Minimum Seasoning in months	2
Maximum Seasoning in months	70
Weighted Average Seasoning in months	17.22

**Distribution by Type of Car**
**Type of Car**

Type of Car	Number of Loans	Percentage of Loans	Outstanding Discounted Principal Balance	Percentage of Balance
New	22,837	66.72 %	50,835,267,963 JPY	77.52 %
Used	11,390	33.28 %	14,738,764,521 JPY	22.48 %
<b>Total</b>	<b>34,227</b>	<b>100.00 %</b>	<b>65,574,032,484 JPY</b>	<b>100.00 %</b>

**Type of Car: Only Balloon Loans**

Type of Car	Number of Loans	Percentage of Loans	Outstanding Discounted Principal Balance	Percentage of Balance
New	21,347	80.22 %	48,604,785,428 JPY	84.25 %
Used	5,264	19.78 %	9,086,757,627 JPY	15.75 %
<b>Total</b>	<b>26,611</b>	<b>100.00 %</b>	<b>57,691,543,055 JPY</b>	<b>100.00 %</b>

**Type of Car: Only Equal Instalment Loans**

Type of Car	Number of Loans	Percentage of Loans	Outstanding Discounted Principal Balance	Percentage of Balance
New	1,490	19.56 %	2,230,482,535 JPY	28.30 %
Used	6,126	80.44 %	5,652,006,894 JPY	71.70 %
<b>Total</b>	<b>7,616</b>	<b>100.00 %</b>	<b>7,882,489,429 JPY</b>	<b>100.00 %</b>

**Distribution by Brand and Model**

Make	Model	Number of Loans	Percentage of Loans	Outstanding Discounted Principal Balance	Percentage of Balance
<b>Audi</b>	A1	1,202	3.51 %	1,766,313,867 JPY	2.69 %
	A3	3,052	8.92 %	5,832,628,344 JPY	8.89 %
	A4	2,575	7.52 %	6,576,338,054 JPY	10.03 %
	A5	540	1.58 %	1,418,156,485 JPY	2.16 %
	A6	812	2.37 %	2,410,378,027 JPY	3.68 %
	A7	295	0.86 %	1,188,753,433 JPY	1.81 %
	A8	86	0.25 %	381,081,710 JPY	0.58 %
	S1	125	0.37 %	304,177,436 JPY	0.46 %
	S3	414	1.21 %	1,199,019,208 JPY	1.83 %
	S4	96	0.28 %	312,070,319 JPY	0.48 %
	S5	73	0.21 %	268,414,051 JPY	0.41 %
	S6	40	0.12 %	205,824,758 JPY	0.31 %
	S7	30	0.09 %	143,101,163 JPY	0.22 %
	S8	20	0.06 %	116,719,738 JPY	0.18 %
	RS3	54	0.16 %	239,861,667 JPY	0.37 %
	RS4	19	0.06 %	80,222,470 JPY	0.12 %
	RS5	17	0.05 %	82,181,826 JPY	0.13 %
	RS6	15	0.04 %	76,746,638 JPY	0.12 %
	RS7	11	0.03 %	70,817,389 JPY	0.11 %
	Q2	14	0.04 %	44,125,149 JPY	0.07 %
	Q3	1,035	3.02 %	2,438,715,341 JPY	3.72 %
	Q5	668	1.95 %	2,086,274,076 JPY	3.18 %
	Q7	194	0.57 %	1,018,525,516 JPY	1.55 %
	RSQ3	21	0.06 %	103,894,352 JPY	0.16 %
	TT	859	2.51 %	2,548,382,278 JPY	3.89 %
	R8	11	0.03 %	59,184,465 JPY	0.09 %
AUDI OTHERS	0	0.00 %	0 JPY	0.00 %	
	<b>Subtotal</b>	<b>12,278</b>	<b>35.87 %</b>	<b>30,971,907,760 JPY</b>	<b>47.23 %</b>
<b>Bentley</b>	ARNAGE	0	0.00 %	0 JPY	0.00 %
	AZURE	0	0.00 %	0 JPY	0.00 %
	BENTAYGA	1	0.00 %	8,633,048 JPY	0.01 %
	CONTINENTAL	12	0.04 %	67,766,042 JPY	0.10 %
	FLYING SPUR	1	0.00 %	5,451,579 JPY	0.01 %
	MULSANNE	1	0.00 %	7,337,008 JPY	0.01 %
	BENTLEY OTHERS	0	0.00 %	0 JPY	0.00 %
		<b>Subtotal</b>	<b>15</b>	<b>0.04 %</b>	<b>89,187,677 JPY</b>
<b>Lamborghini</b>	AVENTADOR	2	0.01 %	9,358,740 JPY	0.01 %
	DIABLO	0	0.00 %	0 JPY	0.00 %
	GALLARDO	2	0.01 %	15,434,854 JPY	0.02 %
	HURACÁN	1	0.00 %	5,171,471 JPY	0.01 %
	MULCIELAGO	0	0.00 %	0 JPY	0.00 %
	LAMBORGHINI OTHERS	0	0.00 %	0 JPY	0.00 %
		<b>Subtotal</b>	<b>5</b>	<b>0.01 %</b>	<b>29,965,065 JPY</b>
<b>VW</b>	BETLE	2,230	6.52 %	3,396,622,290 JPY	5.18 %
	BORA	0	0.00 %	0 JPY	0.00 %
	EOS	0	0.00 %	0 JPY	0.00 %
	GOLF	8,601	25.13 %	14,225,847,700 JPY	21.69 %
	JETTA	16	0.05 %	5,679,537 JPY	0.01 %
	LUPO	0	0.00 %	0 JPY	0.00 %
	PASSAT	1,824	5.33 %	3,810,705,798 JPY	5.81 %
	POLO	4,658	13.61 %	5,844,826,611 JPY	8.91 %
	SCIROCCO	54	0.16 %	59,804,803 JPY	0.09 %
	SHARAN	752	2.20 %	1,512,644,296 JPY	2.31 %
	TIGUAN	634	1.85 %	1,188,696,043 JPY	1.81 %
	TOUAREG	96	0.28 %	248,138,441 JPY	0.38 %
	TOURAN	1,535	4.48 %	2,910,359,056 JPY	4.44 %
	UP	1,512	4.42 %	1,264,565,377 JPY	1.93 %
	VENTO	0	0.00 %	0 JPY	0.00 %
	VW OTHERS	0	0.00 %	0 JPY	0.00 %
	<b>Subtotal</b>	<b>21,912</b>	<b>64.02 %</b>	<b>34,467,889,952 JPY</b>	<b>52.56 %</b>
<b>Non VW Group Vehicles</b>		17	0.05 %	15,082,030 JPY	0.02 %
	<b>Subtotal</b>	<b>17</b>	<b>0.05 %</b>	<b>15,082,030 JPY</b>	<b>0.02 %</b>
<b>Total</b>		<b>34,227</b>	<b>100.00 %</b>	<b>65,574,032,484 JPY</b>	<b>100.00 %</b>

**Geographic Distribution by Prefecture**

Prefecture	Number of Loans	Percentage of Loans	Outstanding Discounted Principal Balance	Percentage of Balance
Tokyo	5,236	15.30 %	11,581,124,006 JPY	17.66 %
Kanagawa	3,381	9.88 %	6,624,781,321 JPY	10.10 %
Aichi	2,461	7.19 %	4,586,117,403 JPY	6.99 %
Saitama	2,256	6.59 %	4,354,289,560 JPY	6.64 %
Osaka	2,018	5.90 %	4,091,872,251 JPY	6.24 %
Fukuoka	1,469	4.29 %	2,778,234,343 JPY	4.24 %
Chiba	1,489	4.35 %	2,749,859,254 JPY	4.19 %
Hokkaido	1,271	3.71 %	2,626,519,289 JPY	4.01 %
Hyogo	1,356	3.96 %	2,606,432,773 JPY	3.97 %
Shizuoka	1,021	2.98 %	1,920,065,077 JPY	2.93 %
Ibaraki	1,048	3.06 %	1,890,054,948 JPY	2.88 %
Hiroshima	800	2.34 %	1,402,917,628 JPY	2.14 %
Tochigi	715	2.09 %	1,341,004,874 JPY	2.05 %
Kyoto	636	1.86 %	1,177,098,551 JPY	1.80 %
Gunma	668	1.95 %	1,084,275,158 JPY	1.65 %
Miyagi	585	1.71 %	1,074,407,234 JPY	1.64 %
Okayama	530	1.55 %	937,776,825 JPY	1.43 %
Gifu	528	1.54 %	924,341,307 JPY	1.41 %
Nagano	519	1.52 %	881,308,507 JPY	1.34 %
Mie	438	1.28 %	747,148,254 JPY	1.14 %
Fukushima	378	1.10 %	638,718,964 JPY	0.97 %
Niigata	393	1.15 %	636,595,556 JPY	0.97 %
Yamaguchi	341	1.00 %	602,971,539 JPY	0.92 %
Nara	305	0.89 %	567,215,668 JPY	0.87 %
Oita	314	0.92 %	563,005,989 JPY	0.86 %
Ishikawa	296	0.86 %	491,545,277 JPY	0.75 %
Shiga	280	0.82 %	480,905,249 JPY	0.73 %
Yamanashi	243	0.71 %	477,145,645 JPY	0.73 %
Kumamoto	287	0.84 %	473,670,644 JPY	0.72 %
Kagoshima	261	0.76 %	469,246,512 JPY	0.72 %
Toyama	253	0.74 %	423,011,691 JPY	0.65 %
Fukui	213	0.62 %	413,313,045 JPY	0.63 %
Yamagata	248	0.72 %	398,132,572 JPY	0.61 %
Wakayama	202	0.59 %	389,118,251 JPY	0.59 %
Kagawa	218	0.64 %	375,143,291 JPY	0.57 %
Nagasaki	170	0.50 %	313,873,145 JPY	0.48 %
Iwate	166	0.48 %	313,188,661 JPY	0.48 %
Tokushima	168	0.49 %	306,550,390 JPY	0.47 %
Miyazaki	150	0.44 %	268,230,257 JPY	0.41 %
Ehime	164	0.48 %	266,410,056 JPY	0.41 %
Saga	139	0.41 %	260,074,781 JPY	0.40 %
Aomori	138	0.40 %	229,217,676 JPY	0.35 %
Shimane	114	0.33 %	225,419,839 JPY	0.34 %
Tottori	120	0.35 %	197,848,632 JPY	0.30 %
Akita	111	0.32 %	194,306,463 JPY	0.30 %
Kouchi	79	0.23 %	136,433,655 JPY	0.21 %
Okinawa	51	0.15 %	83,110,473 JPY	0.13 %
<b>Total</b>	<b>34,227</b>	<b>100.00 %</b>	<b>65,574,032,484 JPY</b>	<b>100.00 %</b>



### Distribution by Obligor Concentration

#### Distribution of Loan Contracts and Vehicles per Obligor

Contract Concentration	Number of Customers	Percentage of Customers	Number of Loans	Percentage of Loans	Outstanding Discounted Principal Balance	Percentage of Balance
1	32,990	96.95 %	32,990	96.39 %	62,790,133,086 JPY	95.75 %
2	976	2.87 %	1,151	3.36 %	2,562,845,531 JPY	3.91 %
3	51	0.15 %	66	0.19 %	179,547,918 JPY	0.27 %
4	8	0.02 %	16	0.05 %	31,515,522 JPY	0.05 %
5	2	0.01 %	3	0.01 %	7,418,213 JPY	0.01 %
6 - 10	1	0.00 %	1	0.00 %	2,572,214 JPY	0.00 %
11 or more	0	0.00 %	0	0.00 %	0 JPY	0.00 %
<b>Total</b>	<b>34,028</b>	<b>100.00 %</b>	<b>34,227</b>	<b>100.00 %</b>	<b>65,574,032,484 JPY</b>	<b>100.00 %</b>

#### Top 20 Obligor

Number	Number of Contracts	Outstanding Discounted Principal Balance	Percentage of Balance
1	2	13,008,248 JPY	0.02 %
2	2	12,503,648 JPY	0.02 %
3	2	11,544,236 JPY	0.02 %
4	2	10,489,472 JPY	0.02 %
5	2	10,314,828 JPY	0.02 %
6	2	9,878,519 JPY	0.02 %
7	1	9,834,884 JPY	0.01 %
8	2	9,811,637 JPY	0.01 %
9	1	9,760,152 JPY	0.01 %
10	1	9,644,132 JPY	0.01 %
11	1	9,552,687 JPY	0.01 %
12	1	9,494,207 JPY	0.01 %
13	1	9,367,353 JPY	0.01 %
14	1	9,321,692 JPY	0.01 %
15	2	9,240,573 JPY	0.01 %
16	1	9,190,036 JPY	0.01 %
17	1	9,175,837 JPY	0.01 %
18	2	9,175,441 JPY	0.01 %
19	2	9,150,320 JPY	0.01 %
20	1	9,140,555 JPY	0.01 %
<b>Total 1 -20</b>	<b>30</b>	<b>199,598,457 JPY</b>	<b>0.30 %</b>

Remarks:

Figures above are calculated based on each of the Sub-Servicers respectively and not across both of the Sub-Servicers.

**Distribution by Contract Start Month**

Origination Month	Number of Loans	Percentage of Loans	Outstanding Discounted Principal Balance	Percentage of Balance
11.2011	1	0.00 %	143,661 JPY	0.00 %
12.2011	2	0.01 %	247,785 JPY	0.00 %
01.2012	3	0.01 %	509,211 JPY	0.00 %
02.2012	2	0.01 %	523,133 JPY	0.00 %
03.2012	1	0.00 %	211,179 JPY	0.00 %
04.2012	3	0.01 %	633,176 JPY	0.00 %
05.2012	2	0.01 %	609,373 JPY	0.00 %
06.2012	1	0.00 %	440,656 JPY	0.00 %
07.2012	1	0.00 %	482,718 JPY	0.00 %
08.2012	2	0.01 %	1,061,685 JPY	0.00 %
09.2012	3	0.01 %	2,576,032 JPY	0.00 %
10.2012	13	0.04 %	2,409,750 JPY	0.00 %
11.2012	29	0.08 %	22,128,255 JPY	0.03 %
12.2012	41	0.12 %	25,204,448 JPY	0.04 %
01.2013	36	0.11 %	24,720,291 JPY	0.04 %
02.2013	41	0.12 %	20,876,558 JPY	0.03 %
03.2013	75	0.22 %	51,588,047 JPY	0.08 %
04.2013	57	0.17 %	45,764,863 JPY	0.07 %
05.2013	80	0.23 %	61,215,398 JPY	0.09 %
06.2013	102	0.30 %	85,306,848 JPY	0.13 %
07.2013	73	0.21 %	64,407,090 JPY	0.10 %
08.2013	51	0.15 %	55,546,871 JPY	0.08 %
09.2013	100	0.29 %	90,753,003 JPY	0.14 %
10.2013	87	0.25 %	94,044,525 JPY	0.14 %
11.2013	102	0.30 %	118,347,202 JPY	0.18 %
12.2013	164	0.48 %	193,268,291 JPY	0.29 %
01.2014	119	0.35 %	137,696,827 JPY	0.21 %
02.2014	195	0.57 %	237,170,341 JPY	0.36 %
03.2014	300	0.88 %	336,199,137 JPY	0.51 %
04.2014	91	0.27 %	100,502,919 JPY	0.15 %
05.2014	117	0.34 %	130,621,778 JPY	0.20 %
06.2014	170	0.50 %	206,663,994 JPY	0.32 %
07.2014	123	0.36 %	151,274,630 JPY	0.23 %
08.2014	99	0.29 %	139,722,028 JPY	0.21 %
09.2014	176	0.51 %	239,533,547 JPY	0.37 %
10.2014	261	0.76 %	331,474,053 JPY	0.51 %
11.2014	345	1.01 %	433,306,335 JPY	0.66 %
12.2014	555	1.62 %	800,702,002 JPY	1.22 %
01.2015	392	1.15 %	497,373,322 JPY	0.76 %
02.2015	622	1.82 %	851,192,892 JPY	1.30 %
03.2015	1,112	3.25 %	1,590,422,611 JPY	2.43 %
04.2015	323	0.94 %	463,445,953 JPY	0.71 %
05.2015	570	1.67 %	856,667,928 JPY	1.31 %
06.2015	694	2.03 %	1,165,873,429 JPY	1.78 %
07.2015	531	1.55 %	841,296,405 JPY	1.28 %
08.2015	558	1.63 %	928,416,186 JPY	1.42 %
09.2015	813	2.38 %	1,488,745,818 JPY	2.27 %
10.2015	485	1.42 %	835,903,015 JPY	1.27 %
11.2015	557	1.63 %	1,008,648,186 JPY	1.54 %
12.2015	1,176	3.44 %	2,119,116,091 JPY	3.23 %
01.2016	1,046	3.06 %	1,965,934,032 JPY	3.00 %
02.2016	1,550	4.53 %	2,894,121,017 JPY	4.41 %
03.2016	2,355	6.88 %	4,526,337,152 JPY	6.90 %
04.2016	1,148	3.35 %	2,375,494,130 JPY	3.62 %
05.2016	1,519	4.44 %	3,083,353,222 JPY	4.70 %
06.2016	1,869	5.46 %	3,940,061,855 JPY	6.01 %
07.2016	1,637	4.78 %	3,415,944,206 JPY	5.21 %
08.2016	1,835	5.36 %	3,995,624,877 JPY	6.09 %
09.2016	2,537	7.41 %	5,631,596,239 JPY	8.59 %
10.2016	1,672	4.89 %	3,694,897,085 JPY	5.63 %
11.2016	2,245	6.56 %	5,126,172,553 JPY	7.82 %
12.2016	652	1.90 %	1,455,242,018 JPY	2.22 %
01.2017	510	1.49 %	1,200,202,974 JPY	1.83 %
02.2017	564	1.65 %	1,383,538,837 JPY	2.11 %
03.2017	793	2.32 %	1,901,491,944 JPY	2.90 %
04.2017	276	0.81 %	701,632,068 JPY	1.07 %
05.2017	270	0.79 %	708,500,426 JPY	1.08 %
06.2017	219	0.64 %	544,077,893 JPY	0.83 %
07.2017	74	0.22 %	174,820,480 JPY	0.27 %
08.2017	0	0.00 %	0 JPY	0.00 %
09.2017	0	0.00 %	0 JPY	0.00 %
<b>Total</b>	<b>34,227</b>	<b>100.00 %</b>	<b>65,574,032,484 JPY</b>	<b>100.00 %</b>

### Distribution by Contract End Month

Maturity Month	Number of Loans	Percentage of Loans	Outstanding Discounted Principal Balance	Percentage of Balance
10.2017	244	0.71 %	184,224,900 JPY	0.28 %
11.2017	330	0.96 %	280,070,491 JPY	0.43 %
12.2017	521	1.52 %	544,627,965 JPY	0.83 %
01.2018	407	1.19 %	353,570,368 JPY	0.54 %
02.2018	634	1.85 %	618,427,306 JPY	0.94 %
03.2018	1,169	3.42 %	1,322,266,921 JPY	2.02 %
04.2018	370	1.08 %	378,722,513 JPY	0.58 %
05.2018	583	1.70 %	660,177,321 JPY	1.01 %
06.2018	811	2.37 %	1,010,857,106 JPY	1.54 %
07.2018	594	1.74 %	688,987,049 JPY	1.05 %
08.2018	527	1.54 %	679,082,269 JPY	1.04 %
09.2018	846	2.47 %	1,150,157,181 JPY	1.75 %
10.2018	477	1.39 %	602,791,346 JPY	0.92 %
11.2018	607	1.77 %	780,398,647 JPY	1.19 %
12.2018	867	2.53 %	1,389,560,146 JPY	2.12 %
01.2019	547	1.60 %	927,310,719 JPY	1.41 %
02.2019	771	2.25 %	1,308,211,805 JPY	2.00 %
03.2019	1,247	3.64 %	2,282,644,595 JPY	3.48 %
04.2019	556	1.62 %	1,154,478,509 JPY	1.76 %
05.2019	740	2.16 %	1,495,931,410 JPY	2.28 %
06.2019	950	2.78 %	2,055,267,060 JPY	3.13 %
07.2019	695	2.03 %	1,522,743,135 JPY	2.32 %
08.2019	726	2.12 %	1,604,797,649 JPY	2.45 %
09.2019	1,118	3.27 %	2,569,580,921 JPY	3.92 %
10.2019	736	2.15 %	1,665,351,387 JPY	2.54 %
11.2019	971	2.84 %	2,347,277,060 JPY	3.58 %
12.2019	498	1.45 %	1,033,536,803 JPY	1.58 %
01.2020	379	1.11 %	729,349,134 JPY	1.11 %
02.2020	488	1.43 %	962,926,663 JPY	1.47 %
03.2020	691	2.02 %	1,372,258,326 JPY	2.09 %
04.2020	234	0.68 %	497,474,192 JPY	0.76 %
05.2020	344	1.01 %	675,763,503 JPY	1.03 %
06.2020	335	0.98 %	662,088,395 JPY	1.01 %
07.2020	252	0.74 %	463,925,935 JPY	0.71 %
08.2020	278	0.81 %	500,496,002 JPY	0.76 %
09.2020	358	1.05 %	652,534,462 JPY	1.00 %
10.2020	255	0.75 %	491,351,913 JPY	0.75 %
11.2020	310	0.91 %	610,338,631 JPY	0.93 %
12.2020	432	1.26 %	875,755,181 JPY	1.34 %
01.2021	540	1.58 %	1,121,865,337 JPY	1.71 %
02.2021	806	2.35 %	1,742,713,840 JPY	2.66 %
03.2021	1,138	3.32 %	2,412,216,947 JPY	3.68 %
04.2021	559	1.63 %	1,227,929,350 JPY	1.87 %
05.2021	719	2.10 %	1,530,217,275 JPY	2.33 %
06.2021	798	2.33 %	1,829,820,711 JPY	2.79 %
07.2021	804	2.35 %	1,783,244,927 JPY	2.72 %
08.2021	903	2.64 %	2,087,534,360 JPY	3.18 %
09.2021	1,221	3.57 %	2,908,231,848 JPY	4.44 %
10.2021	778	2.27 %	1,927,081,720 JPY	2.94 %
11.2021	1,026	3.00 %	2,610,773,327 JPY	3.98 %
12.2021	271	0.79 %	687,562,800 JPY	1.05 %
01.2022	250	0.73 %	674,557,869 JPY	1.03 %
02.2022	279	0.82 %	713,048,270 JPY	1.09 %
03.2022	390	1.14 %	990,489,023 JPY	1.51 %
04.2022	162	0.47 %	411,317,195 JPY	0.63 %
05.2022	163	0.48 %	424,283,448 JPY	0.65 %
06.2022	131	0.38 %	339,853,256 JPY	0.52 %
07.2022	68	0.20 %	167,241,783 JPY	0.26 %
08.2022	81	0.24 %	215,875,008 JPY	0.33 %
09.2022	50	0.15 %	124,285,922 JPY	0.19 %
10.2022	28	0.08 %	60,385,376 JPY	0.09 %
11.2022	32	0.09 %	78,742,550 JPY	0.12 %
12.2022	23	0.07 %	66,482,321 JPY	0.10 %
01.2023	14	0.04 %	35,095,517 JPY	0.05 %
02.2023	18	0.05 %	51,963,711 JPY	0.08 %
03.2023	12	0.04 %	28,682,883 JPY	0.04 %
04.2023	9	0.03 %	23,649,137 JPY	0.04 %
05.2023	15	0.04 %	51,192,947 JPY	0.08 %
06.2023	11	0.03 %	38,807,663 JPY	0.06 %
07.2023	2	0.01 %	5,726,770 JPY	0.01 %
08.2023	6	0.02 %	19,250,629 JPY	0.03 %
09.2023	12	0.04 %	43,681,326 JPY	0.07 %
10.2023	5	0.01 %	19,209,019 JPY	0.03 %
11.2023	2	0.01 %	4,354,117 JPY	0.01 %
12.2023	0	0.00 %	0 JPY	0.00 %
01.2024	0	0.00 %	0 JPY	0.00 %
02.2024	2	0.01 %	6,842,380 JPY	0.01 %
03.2024	0	0.00 %	0 JPY	0.00 %
04.2024	0	0.00 %	0 JPY	0.00 %
05.2024	0	0.00 %	0 JPY	0.00 %
06.2024	0	0.00 %	0 JPY	0.00 %
07.2024	1	0.00 %	4,507,003 JPY	0.01 %
<b>Total</b>	<b>34,227</b>	<b>100.00 %</b>	<b>65,574,032,484 JPY</b>	<b>100.00 %</b>

**Distribution by Monthly Payment**

Monthly Payment	Number of Loans	Percentage of Loans	Outstanding Discounted Principal Balance	Percentage of Balance
<= 10,000 JPY	1,734	5.07 %	2,047,541,925 JPY	3.12 %
10,001 JPY - 20,000 JPY	6,391	18.67 %	8,357,856,988 JPY	12.75 %
20,001 JPY - 30,000 JPY	9,195	26.86 %	13,980,616,197 JPY	21.32 %
30,001 JPY - 40,000 JPY	6,820	19.93 %	12,861,105,797 JPY	19.61 %
40,001 JPY - 50,000 JPY	3,932	11.49 %	8,666,957,313 JPY	13.22 %
50,001 JPY - 60,000 JPY	2,261	6.61 %	5,674,505,369 JPY	8.65 %
60,001 JPY - 70,000 JPY	1,201	3.51 %	3,442,906,796 JPY	5.25 %
70,001 JPY - 80,000 JPY	686	2.00 %	2,191,691,654 JPY	3.34 %
80,001 JPY - 90,000 JPY	524	1.53 %	1,780,873,299 JPY	2.72 %
90,001 JPY - 100,000 JPY	403	1.18 %	1,506,492,061 JPY	2.30 %
100,001 JPY - 110,000 JPY	269	0.79 %	1,048,939,286 JPY	1.60 %
110,001 JPY - 120,000 JPY	198	0.58 %	877,397,281 JPY	1.34 %
120,001 JPY - 130,000 JPY	161	0.47 %	743,978,656 JPY	1.13 %
130,001 JPY - 140,000 JPY	104	0.30 %	514,236,492 JPY	0.78 %
140,001 JPY - 150,000 JPY	72	0.21 %	394,399,319 JPY	0.60 %
>= 150,001 JPY	276	0.81 %	1,484,534,051 JPY	2.26 %
<b>Total</b>	<b>34,227</b>	<b>100.00 %</b>	<b>65,574,032,484 JPY</b>	<b>100.00 %</b>

**Distribution by Bonus Payment**

Bonus Payment	Number of Loans	Percentage of Loans	Outstanding Discounted Principal Balance	Percentage of Balance
No Bonus Payment	20,665	60.38 %	38,866,201,770 JPY	59.27 %
1 JPY - 25,000 JPY	322	0.94 %	449,363,852 JPY	0.69 %
25,001 JPY - 50,000 JPY	3,385	9.89 %	5,321,124,657 JPY	8.11 %
50,001 JPY - 75,000 JPY	1,186	3.47 %	2,000,418,514 JPY	3.05 %
75,001 JPY - 100,000 JPY	4,685	13.69 %	8,919,374,387 JPY	13.60 %
100,001 JPY - 125,000 JPY	597	1.74 %	1,219,205,920 JPY	1.86 %
125,001 JPY - 150,000 JPY	1,815	5.30 %	4,274,384,795 JPY	6.52 %
150,001 JPY - 175,000 JPY	192	0.56 %	470,037,725 JPY	0.72 %
175,001 JPY - 200,000 JPY	860	2.51 %	2,320,512,100 JPY	3.54 %
200,001 JPY - 225,000 JPY	57	0.17 %	157,993,978 JPY	0.24 %
225,001 JPY - 250,000 JPY	196	0.57 %	600,398,852 JPY	0.92 %
250,001 JPY - 275,000 JPY	22	0.06 %	67,577,501 JPY	0.10 %
275,001 JPY - 300,000 JPY	151	0.44 %	510,743,857 JPY	0.78 %
300,001 JPY - 325,000 JPY	8	0.02 %	32,031,220 JPY	0.05 %
325,001 JPY - 350,000 JPY	33	0.10 %	124,548,634 JPY	0.19 %
350,001 JPY - 375,000 JPY	5	0.01 %	21,430,033 JPY	0.03 %
375,001 JPY - 400,000 JPY	16	0.05 %	76,855,678 JPY	0.12 %
400,001 JPY - 425,000 JPY	0	0.00 %	0 JPY	0.00 %
425,001 JPY - 450,000 JPY	8	0.02 %	32,351,927 JPY	0.05 %
450,001 JPY - 475,000 JPY	0	0.00 %	0 JPY	0.00 %
475,001 JPY - 500,000 JPY	17	0.05 %	72,097,892 JPY	0.11 %
500,001 JPY or more	7	0.02 %	37,379,192 JPY	0.06 %
<b>Total</b>	<b>34,227</b>	<b>100.00 %</b>	<b>65,574,032,484 JPY</b>	<b>100.00 %</b>

**Distribution by Motor Type**

Motor Type	Number of Loans	Percentage of Loans	Outstanding Discounted Principal Balance	Percentage of Balance
EA 189	0	0.00 %	0 JPY	0.00 %
Other	34,227	100.00 %	65,574,032,484 JPY	100.00 %
<b>Total</b>	<b>34,227</b>	<b>100.00 %</b>	<b>65,574,032,484 JPY</b>	<b>100.00 %</b>

## Disclaimer

This presentation contains forward-looking statements and information on the business development of the Volkswagen Group. These statements may be spoken or written and can be recognized by terms such as "expects", "anticipates", "intends", "plans", "believes", "seeks", "estimates", "will", or words with similar meaning. These statements are based on assumptions relating to the development of the economies of individual countries, and in particular of the automotive industry, which we have made on the basis of the information available to us and which we consider to be realistic at the time of going to press. The estimates given involve a degree of risk, and the actual developments may differ from those forecast.

Consequently, any unexpected fall in demand or economic stagnation in our key sales markets, such as in Western Europe (and especially Germany) or in the USA, Brazil or China, will have a corresponding impact on the development of our business. The same applies in the event of a significant shift in current exchange rates relative to the US dollar, sterling, yen, Brazilian real, Chinese renminbi and Czech koruna.

If any of these or other risks occur, or if the assumptions underlying any of these statements prove incorrect, the actual results may significantly differ from those expressed or implied by such statements.

We do not update forward-looking statements retrospectively. Such statements are valid on the date of publication and can be superceded.

This information does not constitute an offer to exchange or sell or an offer to exchange or buy any securities.