

Deal Name: Driver Japan six

Originator: Volkswagen Financial Services Japan Ltd.
Gotenyama Trust Tower 17F
7-35 Kitashinagawa 4-chome, Shinagawa-ku
Tokyo 140-0001, Japan

Reporting Entity: Volkswagen Financial Services Japan Ltd.
Treasury Dept.
Gotenyama Trust Tower 17F
7-35 Kitashinagawa 4-chome, Shinagawa-ku
Tokyo 140-0001, Japan
Tel No.: +81(0)3-5792-7261
Fax No.: +81(0)3-3280-7365
E-mail: vwfsjp.abs@vwfs.com

**Trustor of the First Trust:
Servicer:** Volkswagen Financial Services Japan Ltd.

**Trustee of the First Trust:
Trustee of the Second Trust:** Deutsche Trust Company Limited Japan
Sanno Park Tower, 11-1,
Nagatacho 2-chome, Chiyoda-ku,
Tokyo, 100-6172, Japan
Trust Business Administration Department
Tel No.: +81(0)3-5156-5637
Fax No.: +81(0)3-5156-5658
E-mail: DB_Trust_Trust@list.db.com



Contents

Page	Tables of Contents
1	Front Page
2	Contents
3	Deal Overview
4	Deal Overview: Counterparties I
5	Deal Overview: Counterparties II
6	Information regarding the TBI and ABL to the Second Trust
7	Pool Information
8	Available Distribution
9	Waterfall
10	Credit Enhancement
11	Cumulative Gross Loss Ratio & Performance Trigger
12	Cumulative Gross Loss Ratio & Performance Trigger (Chart)
13	Default & Delinquencies
14	Run Out Schedule (Previous)
15	Run Out Schedule
16	Expected Amortization to the Second Trust
17	Sub-Servicer
18	Brand
19	New and Used
20	Product Type
21	RV
22	Brand New and Used
23	Customer Type
24	Outstanding Discounted Principal Balance
25	Original Principal Amount
26	Interest Rate paid by the Obligor
27	Original Term
28	Remaining Term
29	Seasoning
30	Type of Car
31	Brand and Model
32	Geographic Dist. by Prefecture
33	Obligor Concentration
34	Contract Start Month
35	Contract End Month
36	Monthly payment
37	Bonus payment
38	Mortor Type

Deal Overview

Cut Off Date:	2017/02/10		
Trust Commencement Date:	2017/02/23	Legal Maturity of the First Trust:	2025/06/27
Monthly Period:	2017/08/11	to	2017/09/10
Reporting Date:	2017/09/15		
Reporting Frequency:	monthly		
Period No.:	7		
Remittance Date:	2017/09/22		
Advance Payment Date:	2017/09/22		
Cash Adjustment Date:	2017/09/22		
Additional Entrustment Date:	2017/09/26		
Trust Calculation Date:	2017/09/26		
Trust Calculation Period:	2017/08/25	to	2017/09/26
First Trust Payment Date:	2017/09/27		
Second Trust Payment Date:	2017/09/28		
Interest Calculation Period:	2017/08/29	to	2017/09/28
Next Reporting Date:	2017/10/17		

Pool information at the Initial Cut off Date

	Number of Contracts	Outstanding Discounted Principal Balance	Outstanding Nominal Balance
Outstanding Pool	30,757	64,171,706,472 JPY	67,028,993,300 JPY

Credit Type	Percentage of Loans	Outstanding Discounted Principal Balance	Percentage of Balance
Balloon	76.13 %	55,443,642,000 JPY	86.40 %
Equal Instalment Loan	23.87 %	8,728,064,472 JPY	13.60 %
Total	100.00 %	64,171,706,472 JPY	100.00 %

Type of Car	Percentage of Loans	Outstanding Discounted Principal Balance	Percentage of Balance
New	66.66 %	49,506,381,305 JPY	77.15 %
Used	33.34 %	14,665,325,167 JPY	22.85 %
Total	100.00 %	64,171,706,472 JPY	100.00 %

Deal Overview: Counterparties I

Joint Lead Managers:

Shinsei Securities Co., Ltd.
 Nihonbashi Muromachi Nomura Building, 4-3,
 Nihonbashi-muromachi 2-chome,
 Chuo-ku,
 Tokyo 103-0022, Japan

BNP Paribas Securities (Japan) Limited
 GranTokyo North Tower, 9-1,
 Marunouchi 1-chome,
 Chiyoda-ku,
 Tokyo 100-6740, Japan

Trust Management Account Bank:

The Bank of Tokyo-Mitsubishi UFJ, Ltd.
 4-2 Toranomon 1-chome,
 Minato-ku
 Tokyo 105-0001, Japan

Rating								
Moody's			Fitch			R&I		
Long Term	Short Term	Outlook	Long Term	Short Term	Outlook	Long Term	Short Term	Outlook
n.a.	n.a.	n.a.	n.a.	n.a.	n.a.	n.a.	n.a.	n.a.
n.a.	n.a.	n.a.	n.a.	n.a.	n.a.	n.a.	n.a.	n.a.
A1	P-1	Stable	A	F1	Stable	AA-	a-1+	Stable

Originator:

Trustor of the First Trust:

Servicer:

Volkswagen Financial Services Japan Ltd.
 Gotenyama Trust Tower 17F
 7-35 Kitashinagawa 4-chome, Shinagawa-ku
 Tokyo 140-0001, Japan

Trustee of the First Trust:

Trustee of the Second Trust:

Deutsche Trust Company Limited Japan
 Attn.: Driver Japan Six
 Trust Business Administration Department

ABL Lender to the First Trust:

Trustor of the Second Trust:

Shinsei Securities Co., Ltd.

Seller of the Trust Beneficial

Interest of the Second Trust

Shinsei Securities Co., Ltd.
 BNP Paribas Securities (Japan) Limited

Deal Overview: Counterparties II

Rating Agencies:

Moody's SF Japan K.K.

Attn.: Driver Japan six
 Structure Finance Group Monitoring Division
 5-1 Atago 2-chome, Minato-ku
 Tokyo 105-6220, Japan
 E-mail: monitor.msfi@moodys.com

Fitch Ratings Japan Limited

Attn.: Driver Japan six
 Structured Finance
 Kojimachi Crystal City East Wing 3rd Floor,
 4-8 Kōjimachi, Chiyoda-ku,
 Tokyo 102-0083, Japan
 E-mail: tokyo.surveillance@fitchratings.com

Rating and Investment Information, Inc.

Attn.: Monitoring Group Department:
 Structured Finance Department
 TERRACE SQUARE, 3-22,
 Kanda Nishikicho, Chiyoda-ku,
 Tokyo 101-0054, Japan
 E-mail: sfmonitor@r-i.co.jp

Rating of VW

Volkswagen Financial Services AG

Volkswagen AG

Rating								
Moody's			Fitch			R&I		
Short Term	Long Term	Outlook	Short Term	Long Term	Outlook	Short Term	Long Term	Outlook
P-2	A3	Negative	n.a.	n.a.	n.a.	n.a.	n.a.	n.a.
P-2	A3	Negative	F2	BBB+	Stable	n.a.	n.a.	n.a.

Information regarding Trust Beneficial Interest of the Second Trust & Asset Backed Loan to the Second Trust
Rating Details
Rating at Issue Date

	<u>TBI</u>	<u>ABL</u>
Moody's	Aaa(sf)	Aaa(sf)
Fitch	AAAsf	AAAsf
R&I	AAA	AAA

Current Rating

	<u>TBI</u>	<u>ABL</u>
Moody's	Aaa(sf)	Aaa(sf)
Fitch	AAAsf	AAAsf
R&I	AAA	AAA

Information on TBI & ABL

	<u>TBI</u>	<u>ABL</u>
Initial Balance	39,200,000,000 JPY	20,800,000,000 JPY
Expected Maturity Date	2021/04/28	2021/04/28
Legal Maturity of the Second Trust	2025/06/30	2025/06/30
Payment Dates	28th	28th
Business Day Convention	Modified Following	Modified Following
Listing	None	—

Information on Interest

	<u>TBI</u>	<u>ABL</u>
Fixed/ Floating	Fixed	Fixed
Current Coupon	0.19%	0.19%
Day Count Convention	30/360	30/360

Selling Restriction

The holders of the Beneficial Interest and the ABL Lenders* are prohibited from dividing, assigning, pledging or creating any other security interest over any of the Beneficial Interest and the Asset Backed Loans without the prior written approval of the Trustee of the Second Trust.

(*)The holders of the Beneficial Interest and the ABL Lenders are limited to specified investors (*tokutei tousehika*) as defined under Paragraph 31 of Article 2 of the Financial Instruments and Exchange Act (Law no.25 of 1948 as amended).

Clean-Up Call

VWFS Japan as the Trustor of the First Trust has a right at its option to exercise a clean-up call to repurchase of all, but not part, of the outstanding Auto Loan Receivables from the Trustee of the First Trust on any Trust Calculation Date, the Discounted Principal Balance of all outstanding Auto Loan Receivables is expected to be less than ten percent (10%) of the Discounted Principal Balance of the Initial Auto Loan Receivables as of the Initial Cut-off Date after the distribution pursuant to Article 18.1 of the First Trust Agreement on the immediately following First Trust Payment Date.

Pool Information

Pool Balance on Initial Cut-Off Date

Status	Number of Contracts	Outstanding Discounted Principal Balance
Normal	30,757	64,171,706,472 JPY
Cancellation	0	0 JPY
Early Termination	0	0 JPY
Defaulted Receivables	0	0 JPY
Matured	0	0 JPY
Refinance Option	0	0 JPY
Repurchase	0	0 JPY
Total	30,757	64,171,706,472 JPY

Pool Balance before entrustment of Additional Auto Loan Receivables

Status	Number of Contracts on previous EoP	Outstanding Discounted Principal Balance on previous EoP	Number of Contracts "as Collections" during the relevant Monthly Period*	Outstanding Discounted Principal Balance "as Collections" during the relevant Monthly Period*	Number of Contracts EoP before entrustment of Additional Auto Loan Receivables	Outstanding Discounted Principal Balance EoP before entrustment of Additional Auto Loan Receivables
Normal	33,594	65,247,073,211 JPY	33,049	1,236,295,410 JPY	33,049	63,305,238,451 JPY
Cancellation	0	0 JPY	0	0 JPY	0	0 JPY
Early Termination	0	0 JPY	311	530,415,900 JPY	0	0 JPY
Defaulted Receivables	0	0 JPY	6	12,638,354 JPY	0	0 JPY
Matured	0	0 JPY	185	92,636,012 JPY	0	0 JPY
Refinance Option	0	0 JPY	43	69,849,084 JPY	0	0 JPY
Repurchase	0	0 JPY	0	0 JPY	0	0 JPY
Total	33,594	65,247,073,211 JPY	33,594	1,941,834,760 JPY	33,049	63,305,238,451 JPY

Pool Balance after entrustment of Additional Auto Loan Receivables

Status	Number of Contracts EoP before entrustment of Additional Auto Loan Receivables	Outstanding Discounted Principal Balance EoP before entrustment of Additional Auto Loan Receivables	Number of Contracts of Additional Auto Loan Receivables	Outstanding Discounted Principal Balance of Additional Auto Loan Receivables	Number of Contracts EoP after entrustment of Additional Auto Loan Receivables	Outstanding Discounted Principal Balance EoP after entrustment of Additional Auto Loan Receivables
Normal	33,049	63,305,238,451 JPY	948	2,131,498,065 JPY	33,997	65,436,736,516 JPY
Cancellation	0	0 JPY	0	0 JPY	0	0 JPY
Early Termination	0	0 JPY	0	0 JPY	0	0 JPY
Defaulted Receivables	0	0 JPY	0	0 JPY	0	0 JPY
Matured	0	0 JPY	0	0 JPY	0	0 JPY
Refinance Option	0	0 JPY	0	0 JPY	0	0 JPY
Repurchase	0	0 JPY	0	0 JPY	0	0 JPY
Total	33,049	63,305,238,451 JPY	948	2,131,498,065 JPY	33,997	65,436,736,516 JPY

Limits on Eligibility Criteria

Status Limits on Eligibility Criteria (v) (including Additional Entrustment)	Current Exposure in %	Limits in % of the aggregate Discounted Principal Balance of the Auto Loan Receivables outstanding	Status
(i) on Used Purchased Vehicle	22.46 %	35 %	OK
(ii) on Non-VW Vehicles	0.03 %	5 %	OK
(iii) on Balloon Payment	43.03 %	50 %	OK

Outstanding Balances

Monthly Period: from 2017/08/11 to 2017/09/10
Reporting Date: 2017/09/15
Trust Calculation Date: 2017/09/26

Outstanding Balances

	Number of Contracts	Aggregate Amount of the Discounted Principal Balance	Aggregate Amount of the Nominal Balance
Balance on the previous EoP	33,594	65,247,073,211 JPY	67,876,409,400 JPY
Balance after counting on the Collections during the relevant	33,049	63,305,238,451 JPY	65,801,518,600 JPY
Balance of Additional Auto Loan Receivables	948	2,131,498,065 JPY	2,228,420,000 JPY
Aggregate Amount of Auto Loan Receivables	33,997	65,436,736,516 JPY	68,029,938,600 JPY

Collections

	Number of Contracts	Aggregate Amount of the Discounted Principal Balance	Aggregate Amount of the Nominal Balance
Collections: Amortization of current contracts	33,049	1,236,295,410 JPY	1,351,225,200 JPY
Collections: Cancellation	0	0 JPY	0 JPY
Collections: Early Termination	311	530,415,900 JPY	531,044,671 JPY
Collections: Defaulted Receivables	6	12,638,354 JPY	12,666,896 JPY
Collections: Matured	185	92,636,012 JPY	92,757,900 JPY
Collections: Refinance Option	43	69,849,084 JPY	69,930,000 JPY
Collections: Repurchase	0	0 JPY	0 JPY
Sum	33,594	1,941,834,760 JPY	2,057,624,667 JPY

Available Distribution Amount

	Number of Contracts	Aggregate Amount of the Nominal Balance
(a) the Collections for the Monthly Period with respect to such Trust Calculation Date	33,594	2,057,624,667 JPY
(b) drawings from the Cash Collateral Ledger in accordance with Article 18.3 of the First Trust Agreement	0	0 JPY
(c) net investment earnings from Eligible Investments	0	9,578 JPY
(d) net proceeds from the sale or disposal of the Trust Assets of the First Trust	0	0 JPY
(e) any amount which is carried over from the immediately preceding Trust Calculation Date	0	0 JPY
Sum	33,594	2,057,634,245 JPY

Waterfall

There is no distinction between principal and interest, and all collections go through a single priority of payments			
		Payment	Remaining Amount
Available Distribution Amount	plus	2,057,634,245 JPY	2,057,634,245 JPY
(a) an amount necessary for the payment of all taxes and public charges to be paid to the relevant public authority by the immediately following First Trust Payment Date.	less	0 JPY	2,057,634,245 JPY
(b) an amount necessary for the payment of all Fees for the Trustee of the First Trust to be paid to the Trustee of the First Trust by the immediately following First Trust Payment Date.	less	587,223 JPY	2,057,047,022 JPY
(c) an amount necessary for the payment of the Servicing Fee to be paid to the Servicer by the immediately following First Trust Payment Date.	less	58,722,365 JPY	1,998,324,657 JPY
(d) an amount necessary for the payment of the Trust Expenses of the First Trust as provided in Article 23.1 (including the Rating Fees, Costs of the Second Trust and those fees not otherwise covered by (b) or (c) above) to be paid to the relevant party by the immediately following First Trust Payment Date (including any amounts advanced by the Trustee of the First Trust pursuant to Article 23.3)	less	602,019 JPY	1,997,722,638 JPY
(e) an amount necessary for the payment of overdue and unpaid interest on the Asset Backed Loans to the First Trust (if any) to be paid to the Trustee of the Second Trust by the immediately following First Trust Payment Date.	less	0 JPY	1,997,722,638 JPY
(f) an amount necessary for the payment to the Trustee of the Second Trust of interest on the Asset Backed Loan to the First Trust accruing during the relevant Interest Calculation Period	less	9,500,000 JPY	1,988,222,638 JPY
(g) an amount necessary to top up the balance thereof until it is equal to the Cash Collateral Ledger Target Balance	less	0 JPY	1,988,222,638 JPY
(h) (i) prior to the expiration of the Revolving Period: an amount necessary for the redemption of any Additional Senior Beneficial Interest;	less	1,988,222,638 JPY	0 JPY
(ii) following the expiration of the Revolving Period and prior to the occurrence of an Early Amortization Event, an amount necessary for the payment to the Trustee of the Second Trust of the Asset Backed Loan Principal Payment Amount for the relevant First Trust Payment Date.			
(iii) following the occurrence of the Early Amortization Event, an amount necessary for the payment to the Trustee of the Second Trust of the remaining principal balance of the Asset Backed Loan to the First Trust.			
(i) an amount necessary for the payment to the Trustee of the First Trust of any Indemnified Amounts which are not compensated by the Trustor of the First Trust	less	0 JPY	0 JPY
(j) an amount necessary for the payment to the Subordinated Beneficiary of the Subordinated Beneficial Principal Payment Amount for the relevant First Trust Payment Date.	less	0 JPY	0 JPY
(k) (i) prior to the expiration of the Revolving Period, then (x) if a transfer is made under (j) above, such remaining amount will be transferred to the Expenses Distribution Ledger for payment to the Subordinated Beneficiary as a payment of earnings on the Subordinated Beneficial Interest, and such payment shall be made on the First Trust Payment Date immediately following such Trust Calculation Date or (y) if no transfer is made under (j) above, such remaining amount will be carried forward to the next Trust Calculation Date.	less	0 JPY	0 JPY
(ii) following the expiration of the Revolving Period and prior to the occurrence of an Early Amortization Event, then such remaining amount will be transferred to the Expenses Distribution Ledger for payment to the Subordinated Beneficiary as a payment of earnings on the Subordinated Beneficial Interest, and such payment shall be made on the First Trust Payment Date immediately following such Trust Calculation Date.			
(iii) following the occurrence of an Early Amortization Event, the remaining amount in the Trust Collection Ledger will be carried forward to the next Trust Calculation Date.			

Credit Enhancement

Subordinated Principal Balance as of the relevant First Trust Payment Date

	Percentage of Aggregate Discounted Principal Balance	Value
(i) the aggregate amount of the Discounted Principal Balance of all Auto Loan Receivables outstanding		65,436,736,516 JPY
(ii) Asset Backed Loan Principal Balance on the relevant First Trust Payment Date		60,000,000,000 JPY
Overcollateralization (= (i) - (ii))	8.31 %	5,436,736,516 JPY
Trust Collection Ledger which is carried over from the immediately preceding Trust Calculation Date	0.00 %	0 JPY
The amount in the Cash Collateral Ledger	0.53 %	345,000,000 JPY
Subordinated Principal Balance	8.84 %	5,781,736,516 JPY

Trust Management Account (TMA)

	in JPY	+/-	in JPY (previous)
Initial Balance on Cash Entrustment Date	345,000,000 JPY		0 JPY
Outstanding Balance on First Trust Payment Date	345,000,000 JPY	0 JPY	345,000,000 JPY
(a) Expenses Distribution Ledger	0 JPY	0 JPY	0 JPY
(b) Trust Collection Ledger	0 JPY	0 JPY	0 JPY
(c) Cash Collateral Ledger	345,000,000 JPY	0 JPY	345,000,000 JPY
Cash Collateral Ledger Target Balance	345,000,000 JPY		

Calculation of Credit Enhancement

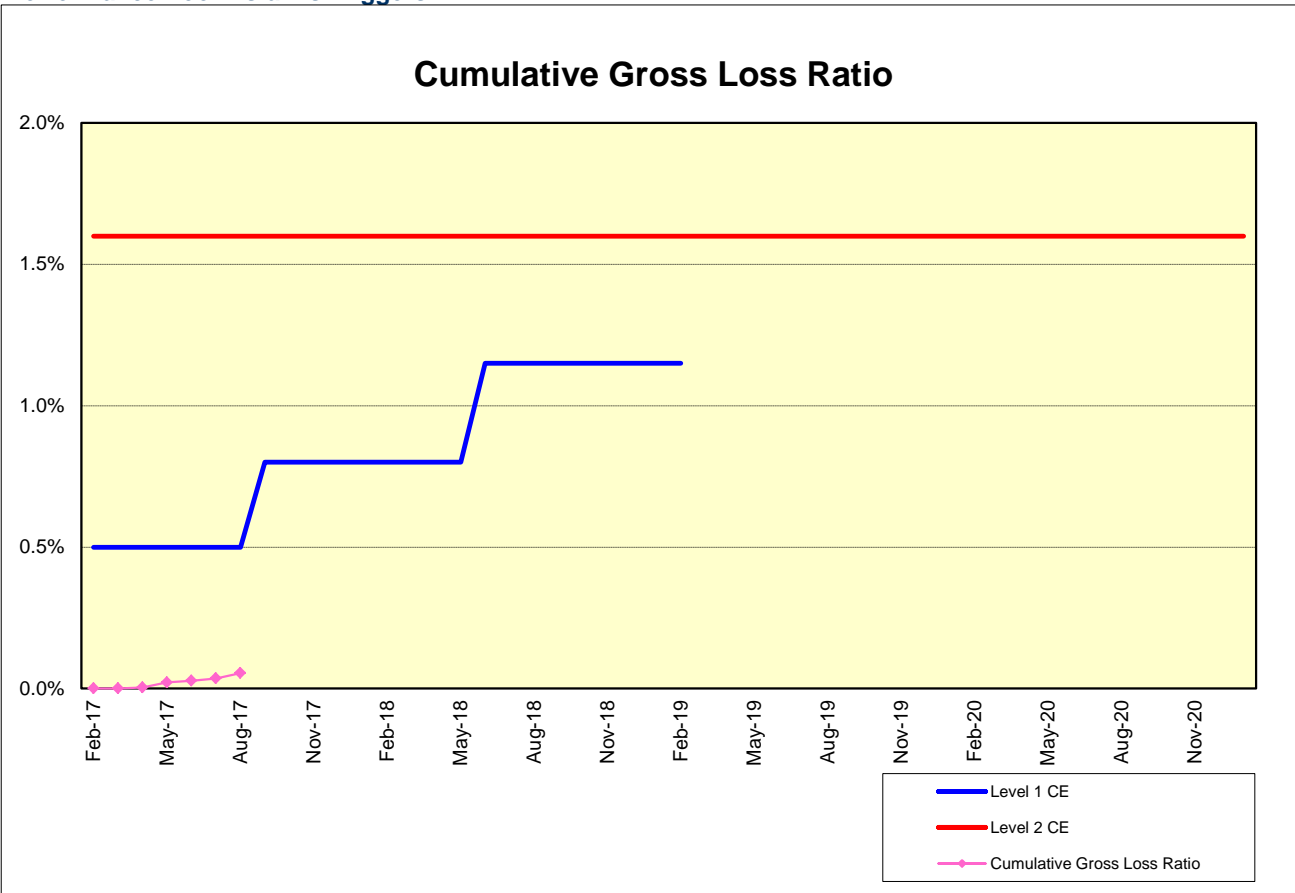
Driver Japan six's Credit Enhancement consists of the items listed above in the Subordinated Principal Balance as of the relevant date of determination (immediately following the First Trust Payment Date). The result provides an absolute value, which will be applied to the (amortized) Aggregate Discounted Principal Balance as of the end of the relevant date.

The transaction has a Revolving Period of 12 months until February 2018.

Asset Backed Loan Overcollateralization Percentage is (i) prior to the expiration of the Revolving Period, 8.5%, and (ii) following the expiration of the Revolving Period, 11.5%; provided, in each case no Credit Enhancement Increase Condition shall be in effect. After a Level 1 Credit Enhancement Increase Condition in effect, 17% and after a Level 2 Credit Enhancement Increase Condition is in effect, 100%.

Cumulative Gross Loss & Cumulative Repurchased Receivables

Performance Pool vis-a-vis Triggers



Cumulative Repurchased Receivables

	Number of Contracts	Repurchase Price
Beginning of Period	0	0 JPY
Repurchased Receivables	0	0 JPY
End of Period	0	0 JPY

Defaulted and Delinquent Contracts

Information of Delinquencies and Defaults

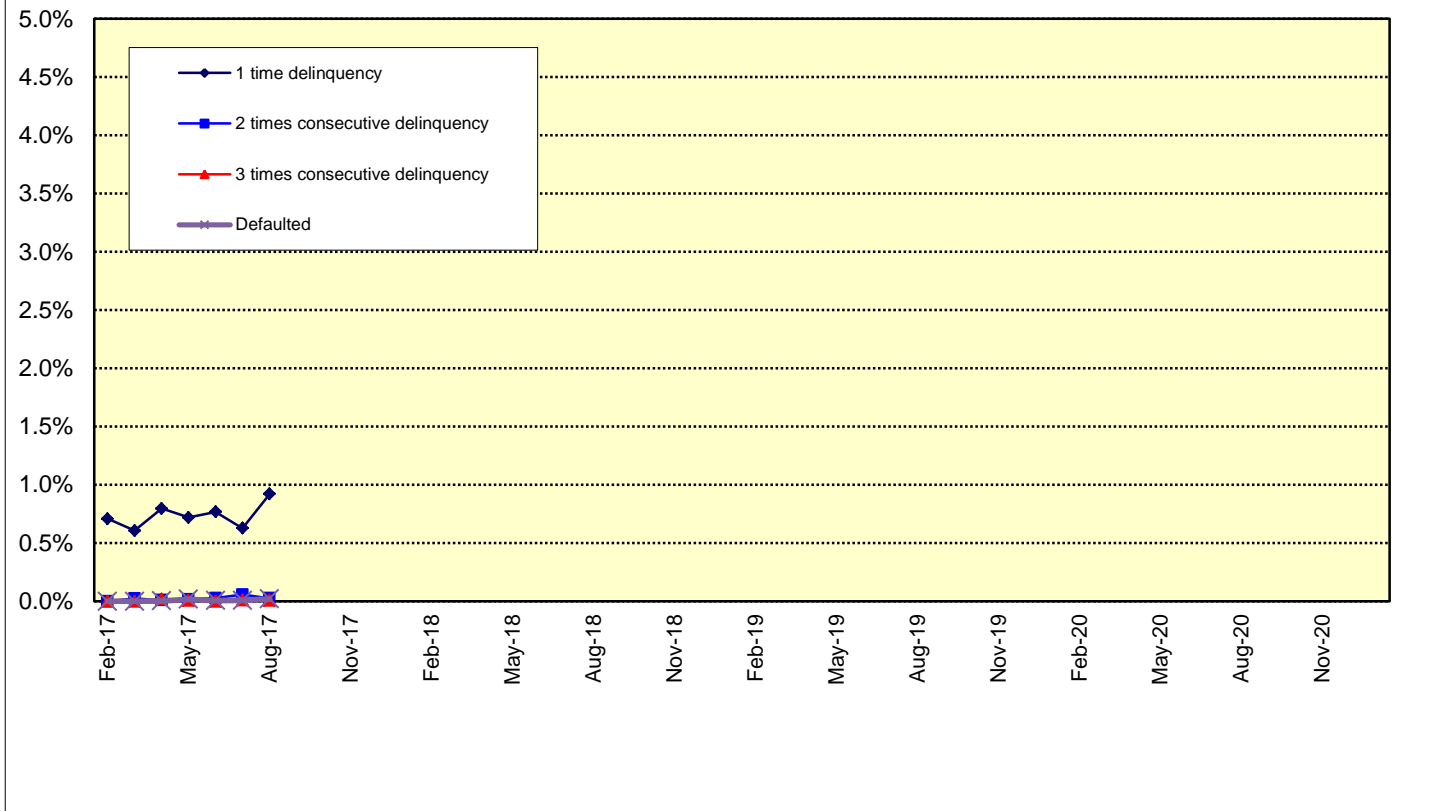
Current Reporting Period	Number of Contracts	Percentage of Contracts (*)	Outstanding Discounted Principal Balance	Percentage of Principal Balance (*)	Outstanding Nominal Balance	Percentage of Nominal Balance (*)
Delinquent	332	0.99 %	623,515,149 JPY	0.96 %	651,635,000 JPY	0.96 %
Default	6	0.02 %	12,638,354 JPY	0.02 %	12,666,896 JPY	0.02 %

(*) Based on the previous EoP

Delinquency Profile (Information Purpose Only)

Days in Arrears	Number of Contracts	Percentage of Contracts	Outstanding Discounted Principal Balance	Percentage of Principal Balance	Outstanding Nominal Balance	Percentage of Nominal Balance
1	322	0.95 %	603,232,893 JPY	0.92 %	630,587,800 JPY	0.93 %
2	8	0.02 %	16,514,089 JPY	0.03 %	17,129,900 JPY	0.03 %
3	2	0.01 %	3,768,167 JPY	0.01 %	3,917,300 JPY	0.01 %
Total	332	0.98 %	623,515,149 JPY	0.95 %	651,635,000 JPY	0.96 %

Delinquent / Defaulted (Gross Loss) Ratio



Run Out Schedule

ROS on the previous EoP on 2017/08/10

Next Payment Month	Number of Contracts	ABS Outstanding Principal	ABS Outstanding Interest	Outstanding Installment	ABS Remaining Principal	ABS Remaining Interest	ABS Remaining Installment
07.2017	33,594	65,247,073,211 JPY	2,629,336,189 JPY	67,876,409,400 JPY	0 JPY	0 JPY	0 JPY
08.2017	33,594	63,835,438,249 JPY	2,513,204,451 JPY	66,348,642,700 JPY	1,411,634,962 JPY	116,131,738 JPY	1,527,766,700 JPY
09.2017	33,366	62,333,891,483 JPY	2,399,629,117 JPY	64,733,520,600 JPY	1,501,546,766 JPY	113,575,334 JPY	1,615,122,100 JPY
10.2017	32,931	61,048,603,715 JPY	2,288,643,085 JPY	63,337,246,800 JPY	1,285,287,768 JPY	110,986,032 JPY	1,396,273,800 JPY
11.2017	32,668	59,685,161,054 JPY	2,179,958,346 JPY	61,865,119,400 JPY	1,363,442,661 JPY	108,684,739 JPY	1,472,127,400 JPY
12.2017	32,326	57,101,835,902 JPY	2,073,692,798 JPY	59,175,528,700 JPY	2,583,325,152 JPY	106,265,548 JPY	2,689,590,700 JPY
01.2018	31,802	55,471,445,838 JPY	1,971,985,362 JPY	57,443,431,200 JPY	1,630,390,064 JPY	101,707,436 JPY	1,732,097,500 JPY
02.2018	31,376	53,922,519,742 JPY	1,873,237,658 JPY	55,795,757,400 JPY	1,548,926,096 JPY	98,747,704 JPY	1,647,673,800 JPY
03.2018	30,728	51,841,321,495 JPY	1,777,178,105 JPY	53,618,499,600 JPY	2,081,198,247 JPY	96,059,553 JPY	2,177,257,800 JPY
04.2018	29,556	50,576,244,525 JPY	1,684,347,475 JPY	52,260,592,000 JPY	1,265,076,970 JPY	92,830,630 JPY	1,357,907,600 JPY
05.2018	29,176	49,114,382,789 JPY	1,593,770,911 JPY	50,708,153,700 JPY	1,461,861,736 JPY	90,576,564 JPY	1,552,438,300 JPY
06.2018	28,589	46,988,016,503 JPY	1,505,690,897 JPY	48,493,707,400 JPY	2,126,366,286 JPY	88,080,014 JPY	2,214,446,300 JPY
07.2018	27,780	45,047,535,570 JPY	1,421,246,330 JPY	46,468,781,900 JPY	1,940,480,933 JPY	84,444,567 JPY	2,024,925,500 JPY
08.2018	27,185	43,579,151,584 JPY	1,340,303,916 JPY	44,919,455,500 JPY	1,468,383,986 JPY	80,942,414 JPY	1,549,326,400 JPY
09.2018	26,664	41,954,227,483 JPY	1,262,000,617 JPY	43,216,228,100 JPY	1,624,924,101 JPY	78,303,299 JPY	1,703,227,400 JPY
10.2018	25,826	40,740,602,982 JPY	1,186,529,018 JPY	41,927,132,000 JPY	1,213,624,501 JPY	75,471,599 JPY	1,289,096,100 JPY
11.2018	25,360	39,441,338,677 JPY	1,113,273,923 JPY	40,554,612,600 JPY	1,299,264,305 JPY	73,255,095 JPY	1,372,519,400 JPY
12.2018	24,762	36,973,660,060 JPY	1,042,321,040 JPY	38,015,981,100 JPY	2,467,678,617 JPY	70,952,883 JPY	2,538,631,500 JPY
01.2019	23,914	35,417,248,217 JPY	975,787,783 JPY	36,393,036,000 JPY	1,556,411,843 JPY	66,533,257 JPY	1,622,945,100 JPY
02.2019	23,385	33,898,182,455 JPY	912,056,345 JPY	34,810,238,800 JPY	1,519,065,762 JPY	63,731,438 JPY	1,582,797,200 JPY
03.2019	22,629	31,815,363,669 JPY	851,016,431 JPY	32,666,380,100 JPY	2,082,818,786 JPY	61,039,914 JPY	2,143,858,700 JPY
04.2019	21,394	30,433,353,198 JPY	793,553,302 JPY	31,226,906,500 JPY	1,382,010,471 JPY	57,463,129 JPY	1,439,473,600 JPY
05.2019	20,839	28,898,902,829 JPY	738,455,871 JPY	29,637,358,700 JPY	1,534,450,369 JPY	55,097,431 JPY	1,589,547,800 JPY
06.2019	20,112	26,761,322,591 JPY	685,931,609 JPY	27,447,254,200 JPY	2,137,580,238 JPY	52,524,262 JPY	2,190,104,500 JPY
07.2019	19,189	24,936,841,419 JPY	636,962,481 JPY	25,573,803,900 JPY	1,824,481,172 JPY	48,969,128 JPY	1,873,450,300 JPY
08.2019	18,510	23,411,245,908 JPY	591,095,892 JPY	24,002,341,800 JPY	1,525,595,511 JPY	45,866,589 JPY	1,571,462,100 JPY
09.2019	17,784	21,460,808,418 JPY	547,674,982 JPY	22,008,483,400 JPY	1,950,437,490 JPY	43,420,910 JPY	1,993,858,400 JPY
10.2019	16,661	20,094,301,366 JPY	507,230,534 JPY	20,601,531,900 JPY	1,366,507,052 JPY	40,444,448 JPY	1,406,951,500 JPY
11.2019	15,933	18,399,128,527 JPY	469,019,573 JPY	18,868,148,100 JPY	1,695,172,839 JPY	38,210,961 JPY	1,733,383,800 JPY
12.2019	14,970	17,075,755,644 JPY	433,381,556 JPY	17,509,137,200 JPY	1,323,372,883 JPY	35,638,017 JPY	1,359,010,900 JPY
01.2020	14,523	16,221,414,134 JPY	400,202,766 JPY	16,621,616,900 JPY	854,341,510 JPY	33,178,790 JPY	887,520,300 JPY
02.2020	14,180	15,477,182,409 JPY	368,642,491 JPY	15,845,824,900 JPY	744,231,725 JPY	31,560,275 JPY	775,792,000 JPY
03.2020	13,751	14,644,817,072 JPY	338,476,228 JPY	14,983,293,300 JPY	832,365,337 JPY	30,166,263 JPY	862,531,600 JPY
04.2020	13,183	14,075,066,082 JPY	309,818,018 JPY	14,384,884,100 JPY	569,750,990 JPY	28,658,210 JPY	598,409,200 JPY
05.2020	12,985	13,527,115,853 JPY	282,255,147 JPY	13,809,371,000 JPY	547,950,229 JPY	27,562,871 JPY	575,513,100 JPY
06.2020	12,702	12,832,412,591 JPY	255,794,109 JPY	13,088,206,700 JPY	694,703,262 JPY	26,461,038 JPY	721,164,300 JPY
07.2020	12,451	12,093,539,761 JPY	230,743,639 JPY	12,324,283,400 JPY	738,872,430 JPY	25,050,470 JPY	763,923,300 JPY
08.2020	12,230	11,549,856,547 JPY	207,174,653 JPY	11,757,031,200 JPY	543,683,214 JPY	23,568,986 JPY	567,252,200 JPY
09.2020	11,957	11,017,983,151 JPY	184,703,449 JPY	11,202,686,600 JPY	531,873,396 JPY	22,471,204 JPY	554,344,600 JPY
10.2020	11,597	10,552,708,025 JPY	163,334,475 JPY	10,716,042,500 JPY	465,275,126 JPY	21,368,974 JPY	486,644,100 JPY
11.2020	11,345	10,066,319,761 JPY	142,920,039 JPY	10,209,239,800 JPY	486,388,264 JPY	20,414,436 JPY	506,802,700 JPY
12.2020	11,041	9,166,966,802 JPY	123,516,398 JPY	9,290,483,200 JPY	899,352,959 JPY	19,403,641 JPY	918,756,600 JPY
01.2021	10,625	8,435,856,001 JPY	105,933,499 JPY	8,541,789,500 JPY	731,110,801 JPY	17,582,899 JPY	748,693,700 JPY
02.2021	10,096	7,632,707,226 JPY	89,749,074 JPY	7,722,456,300 JPY	803,148,775 JPY	16,184,425 JPY	819,333,200 JPY
03.2021	9,312	6,692,499,362 JPY	75,082,638 JPY	6,767,582,000 JPY	940,207,864 JPY	14,666,436 JPY	954,874,300 JPY
04.2021	8,198	6,156,521,336 JPY	62,173,164 JPY	6,218,694,500 JPY	535,978,026 JPY	12,909,474 JPY	548,887,500 JPY
05.2021	7,658	5,560,314,384 JPY	50,341,516 JPY	5,610,655,900 JPY	596,206,952 JPY	11,831,648 JPY	608,038,600 JPY
06.2021	6,948	4,838,728,742 JPY	39,678,658 JPY	4,878,407,400 JPY	721,585,642 JPY	10,662,858 JPY	732,248,500 JPY
07.2021	6,176	4,048,932,097 JPY	30,487,503 JPY	4,079,419,600 JPY	789,796,645 JPY	9,191,155 JPY	798,987,800 JPY
08.2021	5,385	3,332,239,457 JPY	22,819,443 JPY	3,355,058,900 JPY	716,692,640 JPY	7,668,060 JPY	724,360,700 JPY
09.2021	4,499	2,380,014,209 JPY	16,464,191 JPY	2,396,478,400 JPY	952,225,248 JPY	6,355,252 JPY	958,580,500 JPY
10.2021	3,302	1,777,041,849 JPY	11,907,751 JPY	1,788,949,600 JPY	602,972,360 JPY	4,556,440 JPY	607,528,000 JPY
11.2021	2,531	1,027,897,425 JPY	8,465,775 JPY	1,036,363,200 JPY	749,144,424 JPY	3,441,976 JPY	752,586,400 JPY
12.2021	1,523	775,339,923 JPY	6,379,977 JPY	781,719,900 JPY	252,557,502 JPY	2,085,798 JPY	254,643,300 JPY
01.2022	1,284	597,612,291 JPY	4,787,709 JPY	602,400,000 JPY	177,727,632 JPY	1,592,268 JPY	179,319,900 JPY
02.2022	1,082	432,748,464 JPY	3,550,736 JPY	436,299,200 JPY	164,863,827 JPY	1,236,973 JPY	166,100,800 JPY
03.2022	870	238,348,239 JPY	2,643,261 JPY	240,991,500 JPY	194,400,225 JPY	907,475 JPY	195,307,700 JPY
04.2022	587	163,350,925 JPY	2,086,575 JPY	165,437,500 JPY	74,997,314 JPY	556,686 JPY	75,554,000 JPY
05.2022	476	113,602,098 JPY	1,680,702 JPY	115,282,800 JPY	49,748,827 JPY	405,873 JPY	50,154,700 JPY
06.2022	390	92,627,319 JPY	1,372,181 JPY	93,999,500 JPY	20,974,779 JPY	308,521 JPY	21,283,300 JPY
07.2022	348	71,257,068 JPY	1,114,432 JPY	72,371,500 JPY	21,370,251 JPY	257,749 JPY	21,628,000 JPY
08.2022	307	57,285,359 JPY	907,441 JPY	58,192,800 JPY	13,971,709 JPY	206,991 JPY	14,178,700 JPY
09.2022	226	48,423,008 JPY	734,192 JPY	49,157,200 JPY	8,862,351 JPY	173,249 JPY	9,035,600 JPY
10.2022	176	41,306,063 JPY	585,137 JPY	41,891,200 JPY	7,116,945 JPY	149,055 JPY	7,266,000 JPY
11.2022	149	35,087,707 JPY	456,693 JPY	35,544,400 JPY	6,218,356 JPY	128,444 JPY	6,346,800 JPY
12.2022	118	25,984,276 JPY	346,724 JPY	26,331,000 JPY	9,103,431 JPY	109,969 JPY	9,213,400 JPY
01.2023	98	20,402,797 JPY	264,903 JPY	20,667,700 JPY	5,581,479 JPY	81,821 JPY	5,663,300 JPY
02.2023	86	16,625,733 JPY	200,367 JPY	16,826,100 JPY	3,777,064 JPY	64,536 JPY	3,841,600 JPY
03.2023	69	13,558,623 JPY	147,577 JPY	13,706,200 JPY	3,067,110 JPY	52,790 JPY	3,119,900 JPY
04.2023	59	10,809,284 JPY	104,416 JPY	10,913,700 JPY	2,749,339 JPY	43,161 JPY	2,792,500 JPY
05.2023	53	8,276,913 JPY	69,987 JPY	8,346,900 JPY	2,532,371 JPY	34,429 JPY	2,566,800 JPY
06.2023	41	5,690,880 JPY	43,620 JPY	5,734,500 JPY	2,586,033 JPY	26,367 JPY	2,612,400 JPY
07.2023	30	3,784,805 JPY	25,495 JPY	3,810,300 JPY	1,906,075 JPY	18,125 JPY	1,924,200 JPY
08.2023	28	2,079,059 JPY	13,441 JPY	2,092,500 JPY	1,705,746 JPY	12,054 JPY	1,717,800 JPY
09.2023	22	1,006,479 JPY	6,821 JPY	1,013,300 JPY	1,072,580 JPY	6,620 JPY	1,079,200 JPY
10.2023	10	537,185 JPY	3,615 JPY	540,800 JPY	469,294 JPY	3,206 JPY	472,500 JPY
11.2023	5	353,496 JPY	1,904 JPY	355,400 JPY	183,689 JPY	1,711 JPY	185,400 JPY
12.2023	2	162,822 JPY	778 JPY	163,600 JPY	190,674 JPY	1,126 JPY	191,800 JPY
01.2024	2	81,541 JPY	259 JPY	81,800 JPY	81,281 JPY	519 JPY	81,800 JPY
02.2024	2	0 JPY	0 JPY	0 JPY	81,541 JPY	259 JPY	81,800 JPY

Run Out Schedule

ROS on the relevant EoP on 2017/09/10

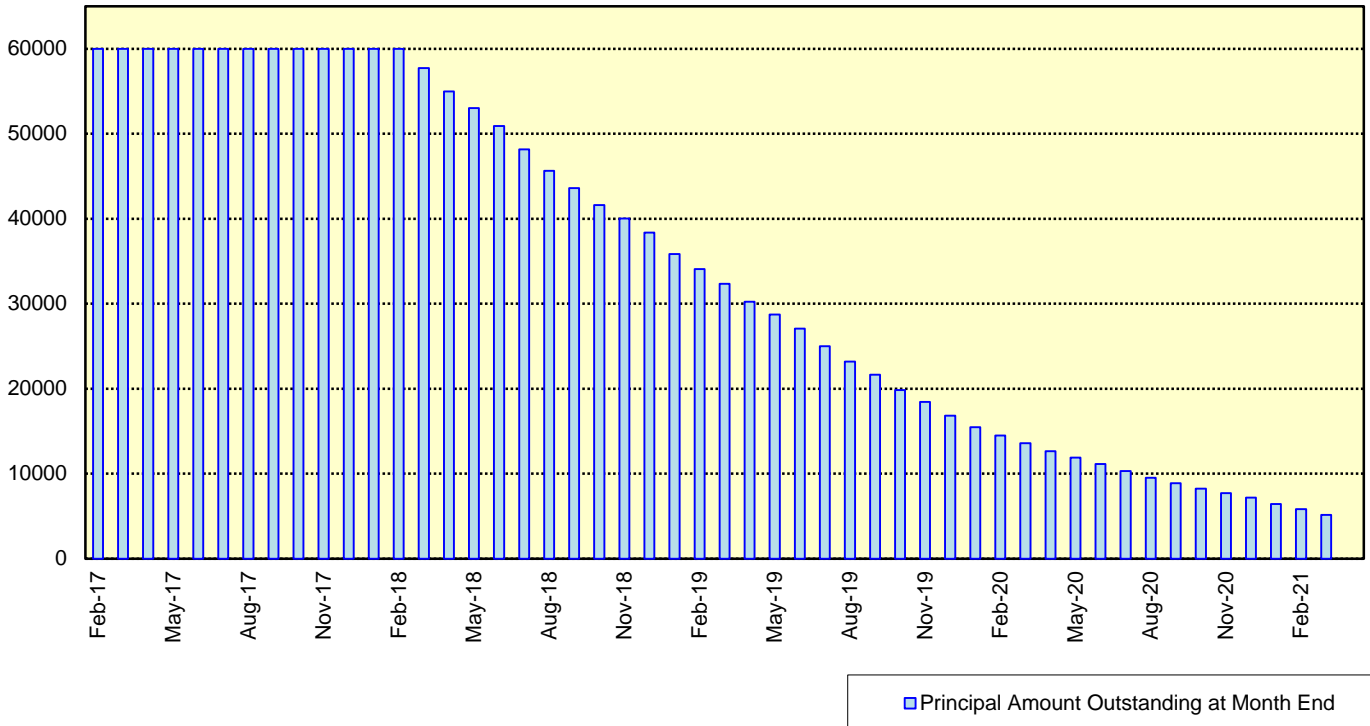
Next Payment Month	Number of Contracts	ABS Outstanding Principal	ABS Outstanding Interest	Outstanding Installment	ABS Remaining Principal	ABS Remaining Interest	ABS Remaining Installment
08.2017	33,997	65,436,736,516 JPY	2,593,202,084 JPY	68,029,938,600 JPY	0 JPY	0 JPY	0 JPY
09.2017	33,997	63,927,934,225 JPY	2,476,925,675 JPY	66,404,859,900 JPY	1,508,802,291 JPY	116,276,409 JPY	1,625,078,700 JPY
10.2017	33,572	62,625,331,992 JPY	2,363,257,408 JPY	64,988,589,400 JPY	1,302,602,233 JPY	113,668,267 JPY	1,416,270,500 JPY
11.2017	33,319	61,256,238,117 JPY	2,251,919,883 JPY	63,508,158,000 JPY	1,369,093,875 JPY	111,337,525 JPY	1,480,431,400 JPY
12.2017	32,984	58,634,812,087 JPY	2,143,020,113 JPY	60,777,832,200 JPY	2,621,426,030 JPY	108,899,770 JPY	2,730,325,800 JPY
01.2018	32,462	56,985,937,424 JPY	2,038,745,576 JPY	59,024,683,000 JPY	1,648,874,663 JPY	104,274,537 JPY	1,753,149,200 JPY
02.2018	32,046	55,417,572,541 JPY	1,937,462,859 JPY	57,355,035,400 JPY	1,568,364,883 JPY	101,282,717 JPY	1,669,647,600 JPY
03.2018	31,400	53,323,538,393 JPY	1,838,896,107 JPY	55,162,434,500 JPY	2,094,034,148 JPY	98,566,752 JPY	2,192,600,900 JPY
04.2018	30,232	52,044,689,659 JPY	1,743,587,341 JPY	53,788,277,000 JPY	1,278,848,734 JPY	95,308,766 JPY	1,374,157,500 JPY
05.2018	29,860	50,556,934,589 JPY	1,650,553,511 JPY	52,207,488,100 JPY	1,487,755,070 JPY	93,033,830 JPY	1,580,788,900 JPY
06.2018	29,271	48,389,305,751 JPY	1,560,057,949 JPY	49,959,363,700 JPY	2,157,628,838 JPY	90,495,562 JPY	2,248,124,400 JPY
07.2018	28,461	46,423,702,695 JPY	1,473,253,705 JPY	47,896,956,400 JPY	1,975,603,056 JPY	86,804,244 JPY	2,062,407,300 JPY
08.2018	27,871	44,935,488,037 JPY	1,390,010,963 JPY	46,325,499,000 JPY	1,488,214,658 JPY	83,242,742 JPY	1,571,457,400 JPY
09.2018	27,351	43,279,860,562 JPY	1,309,444,838 JPY	44,589,305,400 JPY	1,655,627,475 JPY	80,566,125 JPY	1,736,193,600 JPY
10.2018	26,505	42,040,050,296 JPY	1,231,766,304 JPY	43,271,816,600 JPY	1,239,810,266 JPY	77,678,534 JPY	1,317,488,800 JPY
11.2018	26,032	40,713,618,035 JPY	1,156,348,465 JPY	41,869,966,500 JPY	1,326,432,261 JPY	75,417,839 JPY	1,401,850,100 JPY
12.2018	25,429	38,199,693,937 JPY	1,083,278,563 JPY	39,282,972,500 JPY	2,513,924,098 JPY	73,069,902 JPY	2,586,994,000 JPY
01.2019	24,570	36,612,375,801 JPY	1,014,707,099 JPY	37,627,082,900 JPY	1,587,318,136 JPY	68,571,464 JPY	1,655,889,600 JPY
02.2019	24,035	35,065,583,327 JPY	948,988,073 JPY	36,014,571,400 JPY	1,546,792,474 JPY	65,719,026 JPY	1,612,511,500 JPY
03.2019	23,267	32,953,953,968 JPY	886,008,332 JPY	33,839,962,300 JPY	2,111,629,359 JPY	62,979,741 JPY	2,174,609,100 JPY
04.2019	22,021	31,555,149,166 JPY	826,650,834 JPY	32,381,800,000 JPY	1,398,804,802 JPY	59,357,498 JPY	1,458,162,300 JPY
05.2019	21,466	29,993,098,780 JPY	769,687,220 JPY	30,762,786,000 JPY	1,562,050,386 JPY	56,963,614 JPY	1,619,014,000 JPY
06.2019	20,731	27,806,399,131 JPY	715,346,269 JPY	28,521,745,400 JPY	2,186,699,649 JPY	54,340,951 JPY	2,241,040,600 JPY
07.2019	19,792	25,940,537,941 JPY	664,635,059 JPY	26,605,173,000 JPY	1,865,861,190 JPY	50,711,210 JPY	1,916,572,400 JPY
08.2019	19,109	24,392,424,085 JPY	617,090,615 JPY	25,009,514,700 JPY	1,548,113,856 JPY	47,544,444 JPY	1,595,658,300 JPY
09.2019	18,382	22,421,865,851 JPY	572,030,049 JPY	22,993,895,900 JPY	1,970,558,234 JPY	45,060,566 JPY	2,015,618,800 JPY
10.2019	17,264	21,028,854,154 JPY	529,979,946 JPY	21,558,834,100 JPY	1,393,011,697 JPY	42,050,103 JPY	1,435,061,800 JPY
11.2019	16,531	19,297,118,715 JPY	490,205,985 JPY	19,787,324,700 JPY	1,731,735,439 JPY	39,773,961 JPY	1,771,509,400 JPY
12.2019	15,563	17,898,274,604 JPY	453,057,696 JPY	18,351,332,300 JPY	1,398,844,111 JPY	37,148,289 JPY	1,435,992,400 JPY
01.2020	15,084	17,006,523,389 JPY	418,480,911 JPY	17,425,004,300 JPY	891,751,215 JPY	34,576,785 JPY	926,328,000 JPY
02.2020	14,724	16,203,064,948 JPY	385,580,252 JPY	16,588,645,200 JPY	803,458,441 JPY	32,900,659 JPY	836,359,100 JPY
03.2020	14,264	15,289,331,348 JPY	354,160,452 JPY	15,643,491,800 JPY	913,733,600 JPY	31,419,800 JPY	945,153,400 JPY
04.2020	13,640	14,685,768,679 JPY	324,362,721 JPY	15,010,131,400 JPY	603,562,669 JPY	29,797,731 JPY	633,360,400 JPY
05.2020	13,422	14,083,325,216 JPY	295,714,484 JPY	14,379,039,700 JPY	602,443,263 JPY	28,648,237 JPY	631,091,700 JPY
06.2020	13,110	13,304,348,590 JPY	268,249,410 JPY	13,572,598,000 JPY	778,976,626 JPY	27,465,074 JPY	806,441,700 JPY
07.2020	12,812	12,546,080,448 JPY	242,327,752 JPY	12,788,408,200 JPY	758,268,142 JPY	25,921,658 JPY	784,189,800 JPY
08.2020	12,589	11,997,137,028 JPY	217,924,672 JPY	12,205,061,700 JPY	558,943,420 JPY	24,403,080 JPY	583,346,500 JPY
09.2020	12,311	11,445,650,842 JPY	194,647,358 JPY	11,640,298,200 JPY	541,486,186 JPY	23,277,314 JPY	564,763,500 JPY
10.2020	11,950	10,968,522,812 JPY	172,487,588 JPY	11,141,010,400 JPY	477,128,030 JPY	22,159,770 JPY	499,287,800 JPY
11.2020	11,698	10,469,061,050 JPY	151,305,250 JPY	10,620,366,300 JPY	499,461,762 JPY	21,182,338 JPY	520,644,100 JPY
12.2020	11,388	9,542,131,825 JPY	131,158,375 JPY	9,673,290,200 JPY	926,929,225 JPY	20,146,875 JPY	947,076,100 JPY
01.2021	10,961	8,795,943,469 JPY	112,885,431 JPY	8,908,828,900 JPY	746,188,356 JPY	18,272,944 JPY	764,461,300 JPY
02.2021	10,427	7,973,108,484 JPY	96,038,416 JPY	8,069,146,900 JPY	822,834,985 JPY	16,847,015 JPY	839,682,000 JPY
03.2021	9,628	7,021,971,053 JPY	80,744,847 JPY	7,102,715,900 JPY	951,137,431 JPY	15,293,569 JPY	966,431,000 JPY
04.2021	8,511	6,473,986,857 JPY	67,227,743 JPY	6,541,214,600 JPY	547,984,196 JPY	13,517,104 JPY	561,501,300 JPY
05.2021	7,965	5,869,186,411 JPY	54,812,089 JPY	5,923,998,500 JPY	604,800,446 JPY	12,415,654 JPY	617,216,100 JPY
06.2021	7,253	5,128,123,988 JPY	43,580,412 JPY	5,171,704,400 JPY	741,062,423 JPY	11,231,677 JPY	752,294,100 JPY
07.2021	6,471	4,319,697,305 JPY	33,855,495 JPY	4,353,552,800 JPY	808,426,683 JPY	9,724,917 JPY	818,151,600 JPY
08.2021	5,676	3,586,327,859 JPY	25,686,941 JPY	3,612,014,800 JPY	733,369,446 JPY	8,168,554 JPY	741,538,000 JPY
09.2021	4,780	2,612,585,490 JPY	18,860,710 JPY	2,631,446,200 JPY	973,742,369 JPY	6,826,231 JPY	980,568,600 JPY
10.2021	3,568	1,999,514,967 JPY	13,873,333 JPY	2,013,388,300 JPY	613,070,523 JPY	4,987,377 JPY	618,057,900 JPY
11.2021	2,793	1,233,373,143 JPY	10,018,257 JPY	1,243,391,400 JPY	766,141,824 JPY	3,855,076 JPY	769,996,900 JPY
12.2021	1,776	952,438,857 JPY	7,550,843 JPY	959,989,700 JPY	280,934,286 JPY	2,467,414 JPY	283,401,700 JPY
01.2022	1,522	750,879,485 JPY	5,631,415 JPY	756,510,900 JPY	201,559,372 JPY	1,919,428 JPY	203,478,800 JPY
02.2022	1,301	555,026,620 JPY	4,114,180 JPY	559,140,800 JPY	195,852,865 JPY	1,517,235 JPY	197,370,100 JPY
03.2022	1,051	316,730,760 JPY	2,982,440 JPY	319,713,200 JPY	238,295,860 JPY	1,131,740 JPY	239,427,600 JPY
04.2022	705	221,039,674 JPY	2,277,826 JPY	223,317,500 JPY	95,691,086 JPY	704,614 JPY	96,395,700 JPY
05.2022	571	150,390,420 JPY	1,766,080 JPY	152,156,500 JPY	70,649,254 JPY	511,746 JPY	71,161,000 JPY
06.2022	448	94,384,665 JPY	1,388,335 JPY	95,773,000 JPY	56,005,755 JPY	377,745 JPY	56,383,500 JPY
07.2022	354	72,695,675 JPY	1,126,525 JPY	73,822,200 JPY	21,688,990 JPY	261,810 JPY	21,950,800 JPY
08.2022	312	58,409,710 JPY	916,090 JPY	59,325,800 JPY	14,285,965 JPY	210,435 JPY	14,496,400 JPY
09.2022	231	49,352,357 JPY	740,143 JPY	50,092,500 JPY	9,057,353 JPY	175,947 JPY	9,233,300 JPY
10.2022	181	42,047,554 JPY	588,846 JPY	42,636,400 JPY	7,304,803 JPY	151,297 JPY	7,456,100 JPY
11.2022	154	35,640,854 JPY	458,646 JPY	36,099,500 JPY	6,406,700 JPY	130,200 JPY	6,536,900 JPY
12.2022	123	26,308,590 JPY	347,410 JPY	26,656,000 JPY	9,332,264 JPY	111,236 JPY	9,443,500 JPY
01.2023	101	20,532,393 JPY	264,907 JPY	20,797,300 JPY	5,776,197 JPY	82,503 JPY	5,858,700 JPY
02.2023	88	16,693,248 JPY	200,152 JPY	16,893,400 JPY	3,839,145 JPY	64,755 JPY	3,903,900 JPY
03.2023	70	13,575,718 JPY	147,282 JPY	13,723,000 JPY	3,117,530 JPY	52,870 JPY	3,170,400 JPY
04.2023	60	10,775,854 JPY	104,146 JPY	10,880,000 JPY	2,799,864 JPY	43,136 JPY	2,843,000 JPY
05.2023	53	8,233,551 JPY	69,849 JPY	8,303,400 JPY	2,542,303 JPY	34,297 JPY	2,576,600 JPY
06.2023	40	5,690,880 JPY	43,620 JPY	5,734,500 JPY	2,542,671 JPY	26,229 JPY	2,568,900 JPY
07.2023	30	3,784,805 JPY	25,495 JPY	3,810,300 JPY	1,906,075 JPY	18,125 JPY	1,924,200 JPY
08.2023	28	2,079,059 JPY	13,441 JPY	2,092,500 JPY	1,705,746 JPY	12,054 JPY	1,717,800 JPY
09.2023	22	1,006,479 JPY	6,821 JPY	1,013,300 JPY	1,072,580 JPY	6,620 JPY	1,079,200 JPY
10.2023	10	537,185 JPY	3,615 JPY	540,800 JPY	469,294 JPY	3,206 JPY	472,500 JPY
11.2023	5	353,496 JPY	1,904 JPY	355,400 JPY	183,689 JPY	1,711 JPY	185,400 JPY
12.2023	2	162,822 JPY	778 JPY	163,600 JPY	190,674 JPY	1,126 JPY	191,800 JPY
01.2024	2	81,541 JPY	259 JPY	81,800 JPY	81,281 JPY	519 JPY	81,800 JPY
02.2024	2	0 JPY	0 JPY	0 JPY	81,541 JPY	259 JPY	81,800 JPY

Expected Amortisation

Expected Amortization to the Second Trust

JPY mil.

Assuming a Clean-Up Call at 10% of the Initial Outstanding Balance, annual prepayments of 10% and 0% defaults.



Distribution by Sub-Servicer

Sub-Servicer	Number of Loans	Percentage of Loans	Outstanding Principal Balance	Percentage of Balance
Cedyna	20,172	59.33 %	39,748,490,072 JPY	60.74 %
Jaccs	13,825	40.67 %	25,688,246,444 JPY	39.26 %
Total	33,997	100.00 %	65,436,736,516 JPY	100.00 %

Distribution by Brand

Make	Number of Loans	Percentage of Loans	Outstanding Discounted Principal Balance	Percentage of Balance
VW	21,698	63.82 %	34,206,712,747 JPY	52.27 %
Audi	12,258	36.06 %	31,082,305,834 JPY	47.50 %
Bentley	16	0.05 %	98,885,454 JPY	0.15 %
Lamborghini	5	0.01 %	31,588,303 JPY	0.05 %
Other	20	0.06 %	17,244,178 JPY	0.03 %
Total	33,997	100.00 %	65,436,736,516 JPY	100.00 %

Distribution by New and Used
Distribution by New and Used

New or Used	Number of Loans	Percentage of Loans	Outstanding Discounted Principal Balance	Percentage of Balance
New	22,702	66.78 %	50,738,708,080 JPY	77.54 %
Used	8,498	25.00 %	13,259,791,158 JPY	20.26 %
Used (Prolonged)	2,797	8.23 %	1,438,237,278 JPY	2.20 %
Total	33,997	100.00 %	65,436,736,516 JPY	100.00 %

Distribution by Brand New and Used

New or Used	Number of Loans	Percentage of Loans	Outstanding Discounted Principal Balance	Percentage of Balance
VW New	14,872	43.75 %	27,900,172,726 JPY	42.64 %
VW Used	4,615	13.57 %	5,439,461,678 JPY	8.31 %
VW Used (Prolonged)	2,211	6.50 %	867,078,343 JPY	1.33 %
Audi New	7,817	22.99 %	22,757,904,994 JPY	34.78 %
Audi Used	3,855	11.34 %	7,753,241,905 JPY	11.85 %
Audi Used (Prolonged)	586	1.72 %	571,158,935 JPY	0.87 %
Other	41	0.12 %	147,717,935 JPY	0.23 %
Total	33,997	100.00 %	65,436,736,516 JPY	100.00 %

Distribution by Product Type

Loan Type List

Loan Type	Description
100	Volkswagen Owner's Plan
100	Audi Owner's Plan
100	Lamborghini Auto Loan
100	Bentley Auto Loan
101	Twin Loan
105	Refinanced Volkswagen Solutions
106	Refinanced Volkswagen Das Welt Auto with refinance option *
106	Refinanced Audi S-Loan/ S-Loan Plus
106	Refinanced Lamborghini Hyper Premium Plan
106	Refinanced Bentley My Flying B
140	Volkswagen Solutions
150	Volkswagen Das Welt Auto with refinance option **
150	Audi S-Loan
150	Lamborghini Hyper Premium Plan
150	Bentley My Flying B
151	Audi S-Loan Plus

(*) The name was changed from "Refinanced Volkswagen GUC with refinance option" effective from 1 February 2012.

No other changes were made to auto loan agreements.

(**) The name was changed from "Volkswagen GUC with refinance option" effective from 1 February 2012.

No other changes were made to auto loan agreements.

Product Type

Loan Type	Number of Loans	Percentage of Loans	Outstanding Discounted Principal Balance	Percentage of Balance
100	4,837	14.23 %	6,535,618,383 JPY	9.99 %
101	0	0.00 %	0 JPY	0.00 %
105	2,133	6.27 %	849,106,546 JPY	1.30 %
106	664	1.95 %	589,130,732 JPY	0.90 %
140-VFJ	2,223	6.54 %	4,082,929,686 JPY	6.24 %
140-Dealer	11,495	33.81 %	22,249,192,039 JPY	34.00 %
150	11,938	35.11 %	29,068,153,698 JPY	44.42 %
151	707	2.08 %	2,062,605,432 JPY	3.15 %
Total	33,997	100.00 %	65,436,736,516 JPY	100.00 %

Credit Type

Credit Type	Number of Loans	Percentage of Loans	Outstanding Discounted Principal Balance	Percentage of Balance
Balloon Type Loan	26,363	77.55 %	57,462,880,855 JPY	87.81 %
Equal Instalment Type Loan	7,634	22.45 %	7,973,855,661 JPY	12.19 %
Total	33,997	100.00 %	65,436,736,516 JPY	100.00 %

Distribution by RV

Loan Type	Number of Loans	Percentage of Balance	Outstanding Discounted Principal Balance
100/101/105/106	7,634	12.19 %	7,973,855,661 JPY
140-VFJ (excl. balloon)		3.39 %	2,218,393,868 JPY
140-VFJ (balloon)		2.85 %	1,864,535,818 JPY
140-VFJ	2,223	6.24 %	4,082,929,686 JPY
140-Dealer (excl. balloon)		18.65 %	12,204,345,323 JPY
140-Dealer (balloon)		15.35 %	10,044,846,716 JPY
140-Dealer	11,495	34.00 %	22,249,192,039 JPY
150 (excl. balloon)		21.67 %	14,181,445,097 JPY
150 (balloon)		22.75 %	14,886,708,601 JPY
150	11,938	44.42 %	29,068,153,698 JPY
151 (excl. balloon)		1.07 %	701,228,084 JPY
151 (balloon)		2.08 %	1,361,377,348 JPY
151	707	3.15 %	2,062,605,432 JPY
Total	33,997	100.00 %	65,436,736,516 JPY

Type of Payment Portion	Percentage of Balance	Outstanding Discounted Principal Balance
Monthly Installment Portion	56.97 %	37,279,268,033 JPY
Balloon Portion	43.03 %	28,157,468,483 JPY
Total	100.00 %	65,436,736,516 JPY

Distribution by Brand New and Used
Audi

New or Used	Number of Loans	Percentage of Loans	Outstanding Discounted Principal Balance	Percentage of Balance
New	7,817	63.77 %	22,757,904,994 JPY	73.22 %
Used	4,441	36.23 %	8,324,400,840 JPY	26.78 %
Total	12,258	100.00 %	31,082,305,834 JPY	100.00 %

Bentley

New or Used	Number of Loans	Percentage of Loans	Outstanding Discounted Principal Balance	Percentage of Balance
New	10	62.50 %	64,924,938 JPY	65.66 %
Used	6	37.50 %	33,960,516 JPY	34.34 %
Total	16	100.00 %	98,885,454 JPY	100.00 %

Lamborghini

New or Used	Number of Loans	Percentage of Loans	Outstanding Discounted Principal Balance	Percentage of Balance
New	3	60.00 %	15,705,422 JPY	49.72 %
Used	2	40.00 %	15,882,881 JPY	50.28 %
Total	5	100.00 %	31,588,303 JPY	100.00 %

VW

New or Used	Number of Loans	Percentage of Loans	Outstanding Discounted Principal Balance	Percentage of Balance
New	14,872	68.54 %	27,900,172,726 JPY	81.56 %
Used	6,826	31.46 %	6,306,540,021 JPY	18.44 %
Total	21,698	100.00 %	34,206,712,747 JPY	100.00 %

OTHER

New or Used	Number of Loans	Percentage of Loans	Outstanding Discounted Principal Balance	Percentage of Balance
New	0	0.00 %	0 JPY	0.00 %
Used	20	100.00 %	17,244,178 JPY	100.00 %
Total	20	100.00 %	17,244,178 JPY	100.00 %

Distribution by Customer Type

Customer Type

Customer Type	Number of Loans	Percentage of Loans	Outstanding Discounted Principal Balance	Percentage of Balance
Retail	30,723	90.37 %	56,122,115,981 JPY	85.77 %
Corporate	3,274	9.63 %	9,314,620,535 JPY	14.23 %
Total	33,997	100.00 %	65,436,736,516 JPY	100.00 %

Distribution by Outstanding Discounted Principal Balance

Outstanding Discounted Principal Balance	Number of Loans	Percentage of Loans	Outstanding Discounted Principal Balance	Percentage of Balance
<= 500,000 JPY	3,189	9.38 %	885,179,414 JPY	1.35 %
500,001 JPY - 1,000,000 JPY	4,463	13.13 %	3,413,983,543 JPY	5.22 %
1,000,001 JPY - 1,500,000 JPY	6,374	18.75 %	8,051,019,338 JPY	12.30 %
1,500,001 JPY - 2,000,000 JPY	6,374	18.75 %	11,097,252,051 JPY	16.96 %
2,000,001 JPY - 2,500,000 JPY	5,016	14.75 %	11,227,649,017 JPY	17.16 %
2,500,001 JPY - 3,000,000 JPY	3,474	10.22 %	9,471,708,033 JPY	14.47 %
3,000,001 JPY - 3,500,000 JPY	1,871	5.50 %	6,046,242,626 JPY	9.24 %
3,500,001 JPY - 4,000,000 JPY	1,062	3.12 %	3,958,741,401 JPY	6.05 %
4,000,001 JPY - 4,500,000 JPY	749	2.20 %	3,179,450,575 JPY	4.86 %
4,500,001 JPY - 5,000,000 JPY	473	1.39 %	2,246,820,397 JPY	3.43 %
5,000,001 JPY - 6,000,000 JPY	521	1.53 %	2,826,974,622 JPY	4.32 %
6,000,001 JPY - 7,000,000 JPY	248	0.73 %	1,596,311,769 JPY	2.44 %
7,000,001 JPY - 8,000,000 JPY	117	0.34 %	870,557,672 JPY	1.33 %
8,000,001 JPY - 9,000,000 JPY	56	0.16 %	470,827,914 JPY	0.72 %
9,000,001 JPY - 10,000,000 JPY	10	0.03 %	94,018,144 JPY	0.14 %
>= 10,000,001 JPY	0	0.00 %	0 JPY	0.00 %
Total	33,997	100.00 %	65,436,736,516 JPY	100.00 %

Statistics

Minimum Outstanding Discounted Principal Balance	9,574 JPY
Maximum Outstanding Discounted Principal Balance	9,797,192 JPY
Average Outstanding Discounted Principal Balance	1,924,780 JPY

Distribution by Original Principal Amount

Original Principal Balance	Number of Loans	Percentage of Loans	Outstanding Discounted Principal Balance	Percentage of Balance
<= 500,000 JPY	537	1.58 %	107,302,908 JPY	0.16 %
500,001 JPY - 1,000,000 JPY	2,896	8.52 %	1,267,556,737 JPY	1.94 %
1,000,001 JPY - 1,500,000 JPY	3,703	10.89 %	3,222,584,634 JPY	4.92 %
1,500,001 JPY - 2,000,000 JPY	5,408	15.91 %	6,860,132,442 JPY	10.48 %
2,000,001 JPY - 2,500,000 JPY	5,528	16.26 %	9,067,030,665 JPY	13.86 %
2,500,001 JPY - 3,000,000 JPY	5,255	15.46 %	10,590,314,695 JPY	16.18 %
3,000,001 JPY - 3,500,000 JPY	3,629	10.67 %	8,682,450,077 JPY	13.27 %
3,500,001 JPY - 4,000,000 JPY	2,434	7.16 %	6,707,051,323 JPY	10.25 %
4,000,001 JPY - 4,500,000 JPY	1,351	3.97 %	4,298,262,826 JPY	6.57 %
4,500,001 JPY - 5,000,000 JPY	994	2.92 %	3,551,470,559 JPY	5.43 %
5,000,001 JPY - 6,000,000 JPY	1,051	3.09 %	4,329,208,183 JPY	6.62 %
6,000,001 JPY - 7,000,000 JPY	597	1.76 %	2,876,481,986 JPY	4.40 %
7,000,001 JPY - 8,000,000 JPY	277	0.81 %	1,593,619,533 JPY	2.44 %
8,000,001 JPY - 9,000,000 JPY	149	0.44 %	939,216,135 JPY	1.44 %
9,000,001 JPY - 10,000,000 JPY	79	0.23 %	582,905,707 JPY	0.89 %
>= 10,000,001 JPY	109	0.32 %	761,148,106 JPY	1.16 %
Total	33,997	100.00 %	65,436,736,516 JPY	100.00 %

Statistics

Minimum Original Principal Balance	140,000 JPY
Maximum Original Principal Balance	25,000,000 JPY
Average Original Principal Balance	2,673,357 JPY

Distribution by Interest Rate paid by the Obligor

Interest Rate paid by the Obligor	Number of Loans	Percentage of Loans	Outstanding Discounted Principal Balance	Percentage of Balance
< 0.900 %	2,155	6.34 %	4,172,767,956 JPY	6.38 %
0.900 % < 1.500 %	6,137	18.05 %	14,785,564,377 JPY	22.60 %
1.500 % < 2.000 %	11,260	33.12 %	24,405,785,758 JPY	37.30 %
2.000 % < 2.500 %	315	0.93 %	563,313,071 JPY	0.86 %
2.500 % < 3.000 %	6,811	20.03 %	12,706,079,140 JPY	19.42 %
3.000 % < 3.500 %	1,235	3.63 %	1,088,257,616 JPY	1.66 %
3.500 % < 4.000 %	6,046	17.78 %	7,650,708,194 JPY	11.69 %
4.000 % < 4.500 %	38	0.11 %	64,260,404 JPY	0.10 %
4.500 % < 5.000 %	0	0.00 %	0 JPY	0.00 %
5.000 % or more	0	0.00 %	0 JPY	0.00 %
Total	33,997	100.00 %	65,436,736,516 JPY	100.00 %

Statistics	
Minimum Interest Rate	0.00 %
Maximum Interest Rate	4.49 %
Weighted Average Interest Rate	2.04 %

Distribution by Original Term

Length of Original Term (months)	Number of Loans	Percentage of Loans	Outstanding Discounted Principal Balance	Percentage of Balance
6 - 12	144	0.42 %	24,918,399 JPY	0.04 %
13 - 18	183	0.54 %	38,812,713 JPY	0.06 %
19 - 24	1,988	5.85 %	994,684,308 JPY	1.52 %
25 - 30	112	0.33 %	71,695,136 JPY	0.11 %
31 - 36	14,052	41.33 %	28,996,682,794 JPY	44.31 %
37 - 42	83	0.24 %	75,200,853 JPY	0.11 %
43 - 48	1,697	4.99 %	2,383,029,554 JPY	3.64 %
49 - 54	32	0.09 %	43,232,475 JPY	0.07 %
55 - 60	14,794	43.52 %	30,859,445,742 JPY	47.16 %
61 - 66	20	0.06 %	32,079,470 JPY	0.05 %
67 - 72	700	2.06 %	1,365,898,770 JPY	2.09 %
73 - 84	192	0.56 %	551,056,302 JPY	0.84 %
Total	33,997	100.00 %	65,436,736,516 JPY	100.00 %

Statistics	
Minimum Original Term in months	6
Maximum Original Term in months	84
Weighted Average Original Term in months	48.73

Distribution by Remaining Term

Length of Remaining Term (months)	Number of Loans	Percentage of Loans	Outstanding Discounted Principal Balance	Percentage of Balance
<= 12	6,646	19.55 %	7,391,146,377 JPY	11.30 %
13 - 18	4,084	12.01 %	6,270,096,710 JPY	9.58 %
19 - 24	4,885	14.37 %	10,255,027,047 JPY	15.67 %
25 - 30	4,118	12.11 %	9,255,958,174 JPY	14.14 %
31 - 36	1,953	5.74 %	3,755,533,772 JPY	5.74 %
37 - 42	2,683	7.89 %	5,541,448,999 JPY	8.47 %
43 - 48	4,848	14.26 %	10,858,516,592 JPY	16.59 %
49 - 54	3,729	10.97 %	9,354,745,662 JPY	14.30 %
55 - 60	820	2.41 %	2,104,137,191 JPY	3.22 %
61 - 66	161	0.47 %	415,058,712 JPY	0.63 %
67 - 72	48	0.14 %	152,979,047 JPY	0.23 %
73 - 84	22	0.06 %	82,088,233 JPY	0.13 %
Total	33,997	100.00 %	65,436,736,516 JPY	100.00 %

Statistics	
Minimum Remaining Term in months	1
Maximum Remaining Term in months	78
Weighted Average Remaining Term in months	32.04

Distribution by Seasoning

Seasoning (months)	Number of Loans	Percentage of Loans	Outstanding Discounted Principal Balance	Percentage of Balance
<= 12	11,033	32.45 %	25,258,342,167 JPY	38.60 %
13 - 18	10,067	29.61 %	20,477,560,942 JPY	31.29 %
19 - 24	4,662	13.71 %	8,489,995,790 JPY	12.97 %
25 - 30	3,863	11.36 %	5,926,221,954 JPY	9.06 %
31 - 36	2,127	6.26 %	2,911,688,789 JPY	4.45 %
37 - 42	995	2.93 %	1,193,580,221 JPY	1.82 %
43 - 48	638	1.88 %	714,148,140 JPY	1.09 %
49 - 54	433	1.27 %	346,539,590 JPY	0.53 %
55 - 60	162	0.48 %	114,234,528 JPY	0.17 %
61 - 66	10	0.03 %	3,237,164 JPY	0.00 %
67 - 72	7	0.02 %	1,187,231 JPY	0.00 %
73 - 84	0	0.00 %	0 JPY	0.00 %
Total	33,997	100.00 %	65,436,736,516 JPY	100.00 %

Statistics	
Minimum Seasoning in months	2
Maximum Seasoning in months	71
Weighted Average Seasoning in months	16.69

Distribution by Type of Car
Type of Car

Type of Car	Number of Loans	Percentage of Loans	Outstanding Discounted Principal Balance	Percentage of Balance
New	22,702	66.78 %	50,738,708,080 JPY	77.54 %
Used	11,295	33.22 %	14,698,028,436 JPY	22.46 %
Total	33,997	100.00 %	65,436,736,516 JPY	100.00 %

Type of Car: Only Balloon Loans

Type of Car	Number of Loans	Percentage of Loans	Outstanding Discounted Principal Balance	Percentage of Balance
New	21,210	80.45 %	48,470,206,472 JPY	84.35 %
Used	5,153	19.55 %	8,992,674,383 JPY	15.65 %
Total	26,363	100.00 %	57,462,880,855 JPY	100.00 %

Type of Car: Only Equal Instalment Loans

Type of Car	Number of Loans	Percentage of Loans	Outstanding Discounted Principal Balance	Percentage of Balance
New	1,492	19.54 %	2,268,501,608 JPY	28.45 %
Used	6,142	80.46 %	5,705,354,053 JPY	71.55 %
Total	7,634	100.00 %	7,973,855,661 JPY	100.00 %

Distribution by Brand and Model

Make	Model	Number of Loans	Percentage of Loans	Outstanding Discounted Principal Balance	Percentage of Balance
Audi	A1	1,196	3.52 %	1,769,276,869 JPY	2.70 %
	A3	3,049	8.97 %	5,861,322,901 JPY	8.96 %
	A4	2,573	7.57 %	6,568,490,410 JPY	10.04 %
	A5	548	1.61 %	1,442,392,266 JPY	2.20 %
	A6	815	2.40 %	2,452,235,997 JPY	3.75 %
	A7	293	0.86 %	1,202,109,267 JPY	1.84 %
	A8	89	0.26 %	391,425,710 JPY	0.60 %
	S1	123	0.36 %	304,280,128 JPY	0.46 %
	S3	411	1.21 %	1,202,811,085 JPY	1.84 %
	S4	96	0.28 %	304,274,525 JPY	0.46 %
	S5	71	0.21 %	261,698,211 JPY	0.40 %
	S6	39	0.11 %	199,269,829 JPY	0.30 %
	S7	31	0.09 %	149,476,568 JPY	0.23 %
	S8	21	0.06 %	125,770,760 JPY	0.19 %
	RS3	53	0.16 %	240,469,194 JPY	0.37 %
	RS4	20	0.06 %	84,098,285 JPY	0.13 %
	RS5	16	0.05 %	76,402,718 JPY	0.12 %
	RS6	16	0.05 %	79,877,341 JPY	0.12 %
	RS7	11	0.03 %	72,339,426 JPY	0.11 %
	Q2	6	0.02 %	17,809,909 JPY	0.03 %
	Q3	1,034	3.04 %	2,447,226,969 JPY	3.74 %
	Q5	675	1.99 %	2,143,804,860 JPY	3.28 %
	Q7	190	0.56 %	1,000,098,263 JPY	1.53 %
	RSQ3	21	0.06 %	105,531,529 JPY	0.16 %
	TT	849	2.50 %	2,514,859,483 JPY	3.84 %
	R8	12	0.04 %	64,953,331 JPY	0.10 %
AUDI OTHERS	0	0.00 %	0 JPY	0.00 %	
	Subtotal	12,258	36.06 %	31,082,305,834 JPY	47.50 %
Bentley	ARNAGE	0	0.00 %	0 JPY	0.00 %
	AZURE	0	0.00 %	0 JPY	0.00 %
	BENTAYGA	1	0.00 %	8,770,878 JPY	0.01 %
	CONTINENTAL	13	0.04 %	76,411,303 JPY	0.12 %
	FLYING SPUR	1	0.00 %	5,941,021 JPY	0.01 %
	MULSANNE	1	0.00 %	7,762,252 JPY	0.01 %
	BENTLEY OTHERS	0	0.00 %	0 JPY	0.00 %
		Subtotal	16	0.05 %	98,885,454 JPY
Lamborghini	AVENTADOR	2	0.01 %	10,044,045 JPY	0.02 %
	DIABLO	0	0.00 %	0 JPY	0.00 %
	GALLARDO	2	0.01 %	16,009,044 JPY	0.02 %
	HURACÁN	1	0.00 %	5,535,214 JPY	0.01 %
	MULCIELAGO	0	0.00 %	0 JPY	0.00 %
	LAMBORGHINI OTHERS	0	0.00 %	0 JPY	0.00 %
		Subtotal	5	0.01 %	31,588,303 JPY
VW	BEETLE	2,219	6.53 %	3,398,417,364 JPY	5.19 %
	BORA	0	0.00 %	0 JPY	0.00 %
	EOS	0	0.00 %	0 JPY	0.00 %
	GOLF	8,550	25.15 %	14,165,594,706 JPY	21.65 %
	JETTA	16	0.05 %	5,956,822 JPY	0.01 %
	LUPO	0	0.00 %	0 JPY	0.00 %
	PASSAT	1,779	5.23 %	3,731,533,326 JPY	5.70 %
	POLO	4,612	13.57 %	5,806,434,941 JPY	8.87 %
	SCIROCCO	55	0.16 %	59,186,834 JPY	0.09 %
	SHARAN	746	2.19 %	1,516,349,723 JPY	2.32 %
	TIGUAN	603	1.77 %	1,107,609,251 JPY	1.69 %
	TOUAREG	99	0.29 %	263,621,370 JPY	0.40 %
	TOURAN	1,510	4.44 %	2,885,945,755 JPY	4.41 %
	UP	1,509	4.44 %	1,266,062,655 JPY	1.93 %
	VENTO	0	0.00 %	0 JPY	0.00 %
	VW OTHERS	0	0.00 %	0 JPY	0.00 %
	Subtotal	21,698	63.82 %	34,206,712,747 JPY	52.27 %
Non VW Group Vehicles		20	0.06 %	17,244,178 JPY	0.03 %
	Subtotal	20	0.06 %	17,244,178 JPY	0.03 %
Total		33,997	100.00 %	65,436,736,516 JPY	100.00 %

Geographic Distribution by Prefecture

Prefecture	Number of Loans	Percentage of Loans	Outstanding Discounted Principal Balance	Percentage of Balance
Tokyo	5,198	15.29 %	11,527,301,894 JPY	17.62 %
Kanagawa	3,360	9.88 %	6,590,359,905 JPY	10.07 %
Aichi	2,434	7.16 %	4,553,364,331 JPY	6.96 %
Saitama	2,226	6.55 %	4,323,951,176 JPY	6.61 %
Osaka	1,999	5.88 %	4,117,812,416 JPY	6.29 %
Fukuoka	1,455	4.28 %	2,750,508,402 JPY	4.20 %
Chiba	1,482	4.36 %	2,743,150,420 JPY	4.19 %
Hokkaido	1,261	3.71 %	2,636,040,831 JPY	4.03 %
Hyogo	1,356	3.99 %	2,627,620,380 JPY	4.02 %
Shizuoka	1,019	3.00 %	1,925,000,579 JPY	2.94 %
Ibaraki	1,046	3.08 %	1,898,792,260 JPY	2.90 %
Hiroshima	807	2.37 %	1,419,163,213 JPY	2.17 %
Tochigi	710	2.09 %	1,352,036,075 JPY	2.07 %
Kyoto	643	1.89 %	1,191,319,351 JPY	1.82 %
Gunma	660	1.94 %	1,073,764,765 JPY	1.64 %
Miyagi	580	1.71 %	1,061,734,531 JPY	1.62 %
Okayama	526	1.55 %	943,272,761 JPY	1.44 %
Gifu	520	1.53 %	913,233,464 JPY	1.40 %
Nagano	511	1.50 %	863,324,742 JPY	1.32 %
Mie	439	1.29 %	743,777,739 JPY	1.14 %
Niigata	395	1.16 %	650,528,641 JPY	0.99 %
Fukushima	373	1.10 %	634,308,912 JPY	0.97 %
Yamaguchi	337	0.99 %	598,813,609 JPY	0.92 %
Oita	313	0.92 %	573,775,228 JPY	0.88 %
Nara	306	0.90 %	569,762,494 JPY	0.87 %
Ishikawa	297	0.87 %	499,309,793 JPY	0.76 %
Kumamoto	288	0.85 %	486,906,681 JPY	0.74 %
Shiga	280	0.82 %	476,186,288 JPY	0.73 %
Kagoshima	266	0.78 %	473,193,497 JPY	0.72 %
Yamanashi	235	0.69 %	456,257,038 JPY	0.70 %
Toyama	249	0.73 %	426,366,613 JPY	0.65 %
Yamagata	245	0.72 %	397,273,633 JPY	0.61 %
Fukui	209	0.61 %	391,198,519 JPY	0.60 %
Wakayama	200	0.59 %	385,620,303 JPY	0.59 %
Kagawa	215	0.63 %	368,404,959 JPY	0.56 %
Nagasaki	169	0.50 %	321,271,860 JPY	0.49 %
Iwate	168	0.49 %	316,105,790 JPY	0.48 %
Tokushima	165	0.49 %	302,488,082 JPY	0.46 %
Miyazaki	149	0.44 %	271,265,847 JPY	0.41 %
Saga	136	0.40 %	258,860,674 JPY	0.40 %
Ehime	157	0.46 %	250,997,717 JPY	0.38 %
Aomori	136	0.40 %	231,999,834 JPY	0.35 %
Shimane	114	0.34 %	227,141,194 JPY	0.35 %
Tottori	125	0.37 %	196,980,718 JPY	0.30 %
Akita	107	0.31 %	194,298,764 JPY	0.30 %
Kouchi	77	0.23 %	135,440,981 JPY	0.21 %
Okinawa	54	0.16 %	86,449,612 JPY	0.13 %
Total	33,997	100.00 %	65,436,736,516 JPY	100.00 %

Distribution by Obligor Concentration
Distribution of Loan Contracts and Vehicles per Obligor

Contract Concentration	Number of Customers	Percentage of Customers	Number of Loans	Percentage of Loans	Outstanding Discounted Principal Balance	Percentage of Balance
1	32,771	96.94 %	32,771	96.39 %	62,660,795,920 JPY	95.76 %
2	974	2.88 %	1,142	3.36 %	2,561,953,121 JPY	3.92 %
3	52	0.15 %	68	0.20 %	179,686,724 JPY	0.27 %
4	6	0.02 %	12	0.04 %	24,112,039 JPY	0.04 %
5	2	0.01 %	3	0.01 %	7,577,275 JPY	0.01 %
6 - 10	1	0.00 %	1	0.00 %	2,611,437 JPY	0.00 %
11 or more	0	0.00 %	0	0.00 %	0 JPY	0.00 %
Total	33,806	100.00 %	33,997	100.00 %	65,436,736,516 JPY	100.00 %

Top 20 Obligor

Number	Number of Contracts	Outstanding Discounted Principal Balance	Percentage of Balance
1	2	14,740,737 JPY	0.02 %
2	2	13,285,132 JPY	0.02 %
3	2	12,593,085 JPY	0.02 %
4	2	11,691,886 JPY	0.02 %
5	2	11,102,650 JPY	0.02 %
6	2	10,698,877 JPY	0.02 %
7	2	10,612,287 JPY	0.02 %
8	2	10,061,700 JPY	0.02 %
9	2	9,899,992 JPY	0.02 %
10	1	9,797,192 JPY	0.01 %
11	1	9,702,900 JPY	0.01 %
12	1	9,623,528 JPY	0.01 %
13	1	9,465,500 JPY	0.01 %
14	1	9,367,009 JPY	0.01 %
15	2	9,354,908 JPY	0.01 %
16	1	9,348,708 JPY	0.01 %
17	1	9,307,002 JPY	0.01 %
18	2	9,244,728 JPY	0.01 %
19	1	9,242,166 JPY	0.01 %
20	1	9,113,504 JPY	0.01 %
Total 1 -20	31	208,253,491 JPY	0.32 %

Remarks:

Figures above are calculated based on each of the Sub-Servicers respectively and not across both of the Sub-Servicers.

Distribution by Contract Start Month

Origination Month	Number of Loans	Percentage of Loans	Outstanding Discounted Principal Balance	Percentage of Balance
09.2011	1	0.00 %	45,089 JPY	0.00 %
10.2011	0	0.00 %	0 JPY	0.00 %
11.2011	1	0.00 %	215,323 JPY	0.00 %
12.2011	2	0.01 %	303,439 JPY	0.00 %
01.2012	3	0.01 %	623,380 JPY	0.00 %
02.2012	2	0.01 %	583,252 JPY	0.00 %
03.2012	1	0.00 %	246,074 JPY	0.00 %
04.2012	3	0.01 %	744,746 JPY	0.00 %
05.2012	2	0.01 %	684,723 JPY	0.00 %
06.2012	1	0.00 %	477,881 JPY	0.00 %
07.2012	1	0.00 %	500,488 JPY	0.00 %
08.2012	2	0.01 %	1,111,275 JPY	0.00 %
09.2012	35	0.10 %	29,340,665 JPY	0.04 %
10.2012	14	0.04 %	3,441,162 JPY	0.01 %
11.2012	31	0.09 %	24,550,617 JPY	0.04 %
12.2012	42	0.12 %	27,164,075 JPY	0.04 %
01.2013	38	0.11 %	28,626,734 JPY	0.04 %
02.2013	46	0.14 %	25,265,386 JPY	0.04 %
03.2013	75	0.22 %	53,901,103 JPY	0.08 %
04.2013	57	0.17 %	47,943,066 JPY	0.07 %
05.2013	80	0.24 %	63,850,762 JPY	0.10 %
06.2013	102	0.30 %	88,655,540 JPY	0.14 %
07.2013	73	0.21 %	66,923,733 JPY	0.10 %
08.2013	51	0.15 %	57,254,762 JPY	0.09 %
09.2013	115	0.34 %	98,318,181 JPY	0.15 %
10.2013	88	0.26 %	98,169,805 JPY	0.15 %
11.2013	102	0.30 %	122,295,391 JPY	0.19 %
12.2013	165	0.49 %	197,901,328 JPY	0.30 %
01.2014	117	0.34 %	140,208,673 JPY	0.21 %
02.2014	195	0.57 %	246,400,731 JPY	0.38 %
03.2014	300	0.88 %	346,862,879 JPY	0.53 %
04.2014	90	0.26 %	101,668,545 JPY	0.16 %
05.2014	118	0.35 %	135,782,547 JPY	0.21 %
06.2014	170	0.50 %	209,361,251 JPY	0.32 %
07.2014	122	0.36 %	153,504,268 JPY	0.23 %
08.2014	101	0.30 %	145,076,356 JPY	0.22 %
09.2014	448	1.32 %	606,741,923 JPY	0.93 %
10.2014	273	0.80 %	358,667,096 JPY	0.55 %
11.2014	348	1.02 %	450,997,237 JPY	0.69 %
12.2014	557	1.64 %	825,661,563 JPY	1.26 %
01.2015	400	1.18 %	524,544,614 JPY	0.80 %
02.2015	625	1.84 %	877,911,216 JPY	1.34 %
03.2015	1,117	3.29 %	1,633,356,815 JPY	2.50 %
04.2015	323	0.95 %	475,529,041 JPY	0.73 %
05.2015	575	1.69 %	889,519,203 JPY	1.36 %
06.2015	692	2.04 %	1,186,276,604 JPY	1.81 %
07.2015	531	1.56 %	863,629,075 JPY	1.32 %
08.2015	555	1.63 %	932,835,381 JPY	1.43 %
09.2015	848	2.49 %	1,533,811,091 JPY	2.34 %
10.2015	481	1.41 %	842,113,697 JPY	1.29 %
11.2015	558	1.64 %	1,031,697,988 JPY	1.58 %
12.2015	1,175	3.46 %	2,150,664,783 JPY	3.29 %
01.2016	1,045	3.07 %	1,998,872,850 JPY	3.05 %
02.2016	1,553	4.57 %	2,944,450,906 JPY	4.50 %
03.2016	2,359	6.94 %	4,569,945,022 JPY	6.98 %
04.2016	1,140	3.35 %	2,398,952,298 JPY	3.67 %
05.2016	1,515	4.46 %	3,127,578,884 JPY	4.78 %
06.2016	1,870	5.50 %	3,978,897,944 JPY	6.08 %
07.2016	1,630	4.79 %	3,457,735,888 JPY	5.28 %
08.2016	1,826	5.37 %	4,036,167,627 JPY	6.17 %
09.2016	2,570	7.56 %	5,680,941,527 JPY	8.68 %
10.2016	1,657	4.87 %	3,706,323,663 JPY	5.66 %
11.2016	2,231	6.56 %	5,176,716,020 JPY	7.91 %
12.2016	600	1.76 %	1,360,507,274 JPY	2.08 %
01.2017	451	1.33 %	1,071,538,590 JPY	1.64 %
02.2017	496	1.46 %	1,223,822,220 JPY	1.87 %
03.2017	669	1.97 %	1,605,110,190 JPY	2.45 %
04.2017	224	0.66 %	585,014,497 JPY	0.89 %
05.2017	184	0.54 %	482,315,864 JPY	0.74 %
06.2017	125	0.37 %	329,884,695 JPY	0.50 %
07.2017	0	0.00 %	0 JPY	0.00 %
08.2017	0	0.00 %	0 JPY	0.00 %
Total	33,997	100.00 %	65,436,736,516 JPY	100.00 %

Distribution by Contract End Month

Maturity Month	Number of Loans	Percentage of Loans	Outstanding Discounted Principal Balance	Percentage of Balance
09.2017	425	1.25 %	397,270,905 JPY	0.61 %
10.2017	253	0.74 %	208,711,175 JPY	0.32 %
11.2017	335	0.99 %	298,630,093 JPY	0.46 %
12.2017	522	1.54 %	570,175,945 JPY	0.87 %
01.2018	416	1.22 %	381,677,883 JPY	0.58 %
02.2018	646	1.90 %	656,569,434 JPY	1.00 %
03.2018	1,168	3.44 %	1,365,793,181 JPY	2.09 %
04.2018	372	1.09 %	394,259,234 JPY	0.60 %
05.2018	589	1.73 %	694,884,062 JPY	1.06 %
06.2018	810	2.38 %	1,035,384,532 JPY	1.58 %
07.2018	590	1.74 %	706,881,416 JPY	1.08 %
08.2018	520	1.53 %	680,908,517 JPY	1.04 %
09.2018	846	2.49 %	1,173,367,407 JPY	1.79 %
10.2018	473	1.39 %	610,845,600 JPY	0.93 %
11.2018	603	1.77 %	800,757,236 JPY	1.22 %
12.2018	859	2.53 %	1,407,181,584 JPY	2.15 %
01.2019	535	1.57 %	938,544,126 JPY	1.43 %
02.2019	768	2.26 %	1,339,400,757 JPY	2.05 %
03.2019	1,246	3.67 %	2,334,617,759 JPY	3.57 %
04.2019	555	1.63 %	1,173,257,283 JPY	1.79 %
05.2019	735	2.16 %	1,520,289,325 JPY	2.32 %
06.2019	939	2.76 %	2,064,458,656 JPY	3.15 %
07.2019	683	2.01 %	1,532,955,653 JPY	2.34 %
08.2019	727	2.14 %	1,629,448,371 JPY	2.49 %
09.2019	1,118	3.29 %	2,612,308,444 JPY	3.99 %
10.2019	733	2.16 %	1,681,554,204 JPY	2.57 %
11.2019	968	2.85 %	2,381,694,782 JPY	3.64 %
12.2019	479	1.41 %	992,209,203 JPY	1.52 %
01.2020	360	1.06 %	695,003,125 JPY	1.06 %
02.2020	460	1.35 %	893,188,416 JPY	1.36 %
03.2020	624	1.84 %	1,218,064,224 JPY	1.86 %
04.2020	218	0.64 %	464,185,326 JPY	0.71 %
05.2020	312	0.92 %	585,992,858 JPY	0.90 %
06.2020	298	0.88 %	578,065,338 JPY	0.88 %
07.2020	223	0.66 %	400,858,501 JPY	0.61 %
08.2020	278	0.82 %	508,367,525 JPY	0.78 %
09.2020	361	1.06 %	677,493,769 JPY	1.04 %
10.2020	252	0.74 %	491,884,413 JPY	0.75 %
11.2020	310	0.91 %	619,461,163 JPY	0.95 %
12.2020	427	1.26 %	878,957,963 JPY	1.34 %
01.2021	534	1.57 %	1,128,361,070 JPY	1.72 %
02.2021	799	2.35 %	1,745,290,621 JPY	2.67 %
03.2021	1,117	3.29 %	2,389,797,933 JPY	3.65 %
04.2021	546	1.61 %	1,222,228,713 JPY	1.87 %
05.2021	712	2.09 %	1,535,899,524 JPY	2.35 %
06.2021	782	2.30 %	1,819,458,480 JPY	2.78 %
07.2021	795	2.34 %	1,791,318,773 JPY	2.74 %
08.2021	896	2.64 %	2,099,813,169 JPY	3.21 %
09.2021	1,212	3.57 %	2,912,411,387 JPY	4.45 %
10.2021	775	2.28 %	1,928,994,914 JPY	2.95 %
11.2021	1,017	2.99 %	2,618,611,353 JPY	4.00 %
12.2021	254	0.75 %	654,124,069 JPY	1.00 %
01.2022	221	0.65 %	598,107,997 JPY	0.91 %
02.2022	250	0.74 %	642,495,942 JPY	0.98 %
03.2022	346	1.02 %	880,460,949 JPY	1.35 %
04.2022	134	0.39 %	342,394,227 JPY	0.52 %
05.2022	123	0.36 %	315,584,144 JPY	0.48 %
06.2022	94	0.28 %	253,370,652 JPY	0.39 %
07.2022	42	0.12 %	93,559,586 JPY	0.14 %
08.2022	81	0.24 %	218,767,633 JPY	0.33 %
09.2022	50	0.15 %	125,809,397 JPY	0.19 %
10.2022	27	0.08 %	59,473,114 JPY	0.09 %
11.2022	31	0.09 %	76,981,649 JPY	0.12 %
12.2022	22	0.06 %	65,159,216 JPY	0.10 %
01.2023	13	0.04 %	34,920,540 JPY	0.05 %
02.2023	18	0.05 %	52,714,796 JPY	0.08 %
03.2023	10	0.03 %	24,631,353 JPY	0.04 %
04.2023	7	0.02 %	20,552,835 JPY	0.03 %
05.2023	13	0.04 %	46,900,476 JPY	0.07 %
06.2023	10	0.03 %	35,652,387 JPY	0.05 %
07.2023	2	0.01 %	5,799,697 JPY	0.01 %
08.2023	6	0.02 %	19,442,299 JPY	0.03 %
09.2023	12	0.04 %	44,147,405 JPY	0.07 %
10.2023	5	0.01 %	19,434,217 JPY	0.03 %
11.2023	3	0.01 %	11,604,417 JPY	0.02 %
12.2023	0	0.00 %	0 JPY	0.00 %
01.2024	0	0.00 %	0 JPY	0.00 %
02.2024	2	0.01 %	6,902,194 JPY	0.01 %
Total	33,997	100.00 %	65,436,736,516 JPY	100.00 %

Distribution by Monthly Payment

Monthly Payment	Number of Loans	Percentage of Loans	Outstanding Discounted Principal Balance	Percentage of Balance
<= 10,000 JPY	1,712	5.04 %	2,013,027,936 JPY	3.08 %
10,001 JPY - 20,000 JPY	6,361	18.71 %	8,322,439,854 JPY	12.72 %
20,001 JPY - 30,000 JPY	9,150	26.91 %	13,947,067,857 JPY	21.31 %
30,001 JPY - 40,000 JPY	6,768	19.91 %	12,815,319,736 JPY	19.58 %
40,001 JPY - 50,000 JPY	3,876	11.40 %	8,574,261,668 JPY	13.10 %
50,001 JPY - 60,000 JPY	2,239	6.59 %	5,678,552,977 JPY	8.68 %
60,001 JPY - 70,000 JPY	1,198	3.52 %	3,470,443,183 JPY	5.30 %
70,001 JPY - 80,000 JPY	681	2.00 %	2,170,607,625 JPY	3.32 %
80,001 JPY - 90,000 JPY	530	1.56 %	1,816,209,622 JPY	2.78 %
90,001 JPY - 100,000 JPY	404	1.19 %	1,519,836,432 JPY	2.32 %
100,001 JPY - 110,000 JPY	264	0.78 %	1,043,946,736 JPY	1.60 %
110,001 JPY - 120,000 JPY	198	0.58 %	886,037,872 JPY	1.35 %
120,001 JPY - 130,000 JPY	160	0.47 %	739,088,271 JPY	1.13 %
130,001 JPY - 140,000 JPY	106	0.31 %	530,316,583 JPY	0.81 %
140,001 JPY - 150,000 JPY	73	0.21 %	395,228,888 JPY	0.60 %
>= 150,001 JPY	277	0.81 %	1,514,351,276 JPY	2.31 %
Total	33,997	100.00 %	65,436,736,516 JPY	100.00 %

Distribution by Bonus Payment

Bonus Payment	Number of Loans	Percentage of Loans	Outstanding Discounted Principal Balance	Percentage of Balance
No Bonus Payment	20,520	60.36 %	38,950,396,470 JPY	59.52 %
1 JPY - 25,000 JPY	317	0.93 %	449,597,853 JPY	0.69 %
25,001 JPY - 50,000 JPY	3,359	9.88 %	5,274,199,099 JPY	8.06 %
50,001 JPY - 75,000 JPY	1,171	3.44 %	1,978,486,945 JPY	3.02 %
75,001 JPY - 100,000 JPY	4,672	13.74 %	8,879,844,428 JPY	13.57 %
100,001 JPY - 125,000 JPY	594	1.75 %	1,217,406,531 JPY	1.86 %
125,001 JPY - 150,000 JPY	1,799	5.29 %	4,217,115,792 JPY	6.44 %
150,001 JPY - 175,000 JPY	193	0.57 %	473,209,206 JPY	0.72 %
175,001 JPY - 200,000 JPY	850	2.50 %	2,273,155,257 JPY	3.47 %
200,001 JPY - 225,000 JPY	54	0.16 %	148,630,184 JPY	0.23 %
225,001 JPY - 250,000 JPY	194	0.57 %	590,778,049 JPY	0.90 %
250,001 JPY - 275,000 JPY	22	0.06 %	68,204,445 JPY	0.10 %
275,001 JPY - 300,000 JPY	156	0.46 %	515,625,260 JPY	0.79 %
300,001 JPY - 325,000 JPY	8	0.02 %	32,241,470 JPY	0.05 %
325,001 JPY - 350,000 JPY	35	0.10 %	132,552,483 JPY	0.20 %
350,001 JPY - 375,000 JPY	5	0.01 %	21,568,246 JPY	0.03 %
375,001 JPY - 400,000 JPY	16	0.05 %	72,065,985 JPY	0.11 %
400,001 JPY - 425,000 JPY	0	0.00 %	0 JPY	0.00 %
425,001 JPY - 450,000 JPY	8	0.02 %	32,602,321 JPY	0.05 %
450,001 JPY - 475,000 JPY	0	0.00 %	0 JPY	0.00 %
475,001 JPY - 500,000 JPY	17	0.05 %	71,446,356 JPY	0.11 %
500,001 JPY or more	7	0.02 %	37,610,136 JPY	0.06 %
Total	33,997	100.00 %	65,436,736,516 JPY	100.00 %

Distribution by Motor Type

Motor Type	Number of Loans	Percentage of Loans	Outstanding Discounted Principal Balance	Percentage of Balance
EA 189	0	0.00 %	0 JPY	0.00 %
Other	33,997	100.00 %	65,436,736,516 JPY	100.00 %
Total	33,997	100.00 %	65,436,736,516 JPY	100.00 %

Disclaimer

This presentation contains forward-looking statements and information on the business development of the Volkswagen Group. These statements may be spoken or written and can be recognized by terms such as "expects", "anticipates", "intends", "plans", "believes", "seeks", "estimates", "will", or words with similar meaning. These statements are based on assumptions relating to the development of the economies of individual countries, and in particular of the automotive industry, which we have made on the basis of the information available to us and which we consider to be realistic at the time of going to press. The estimates given involve a degree of risk, and the actual developments may differ from those forecast.

Consequently, any unexpected fall in demand or economic stagnation in our key sales markets, such as in Western Europe (and especially Germany) or in the USA, Brazil or China, will have a corresponding impact on the development of our business. The same applies in the event of a significant shift in current exchange rates relative to the US dollar, sterling, yen, Brazilian real, Chinese renminbi and Czech koruna.

If any of these or other risks occur, or if the assumptions underlying any of these statements prove incorrect, the actual results may significantly differ from those expressed or implied by such statements.

We do not update forward-looking statements retrospectively. Such statements are valid on the date of publication and can be superceded.

This information does not constitute an offer to exchange or sell or an offer to exchange or buy any securities.