

Deal Name: Driver Japan six

Originator: Volkswagen Financial Services Japan Ltd.
Gotenyama Trust Tower 17F
7-35 Kitashinagawa 4-chome, Shinagawa-ku
Tokyo 140-0001, Japan

Reporting Entity: Volkswagen Financial Services Japan Ltd.
Treasury Dept.
Gotenyama Trust Tower 17F
7-35 Kitashinagawa 4-chome, Shinagawa-ku
Tokyo 140-0001, Japan
Tel No.: +81(0)3-5792-7261
Fax No.: +81(0)3-3280-7365
E-mail: vwfsjp.abs@vwfs.com

**Trustor of the First Trust:
Servicer:** Volkswagen Financial Services Japan Ltd.

**Trustee of the First Trust:
Trustee of the Second Trust:** Deutsche Trust Company Limited Japan
Sanno Park Tower, 11-1,
Nagatacho 2-chome, Chiyoda-ku,
Tokyo, 100-6172, Japan
Trust Business Administration Department
Tel No.: +81(0)3-5156-5637
Fax No.: +81(0)3-5156-5658
E-mail: DB_Trust_Trust@list.db.com



Contents

Page	Tables of Contents
1	Front Page
2	Contents
3	Deal Overview
4	Deal Overview: Counterparties I
5	Deal Overview: Counterparties II
6	Information regarding the TBI and ABL to the Second Trust
7	Pool Information
8	Available Distribution
9	Waterfall
10	Credit Enhancement
11	Cumulative Gross Loss Ratio & Performance Trigger
12	Cumulative Gross Loss Ratio & Performance Trigger (Chart)
13	Default & Delinquencies
14	Run Out Schedule (Previous)
15	Run Out Schedule
16	Expected Amortization to the Second Trust
17	Sub-Servicer
18	Brand
19	New and Used
20	Product Type
21	RV
22	Brand New and Used
23	Customer Type
24	Outstanding Discounted Principal Balance
25	Original Principal Amount
26	Interest Rate paid by the Obligor
27	Original Term
28	Remaining Term
29	Seasoning
30	Type of Car
31	Brand and Model
32	Geographic Dist. by Prefecture
33	Obligor Concentration
34	Contract Start Month
35	Contract End Month
36	Monthly payment
37	Bonus payment
38	Mortor Type

Deal Overview

Cut Off Date:	2017/02/10		
Trust Commencement Date:	2017/02/23	Legal Maturity of the First Trust:	2025/06/27
Monthly Period:	2017/06/11	to	2017/07/10
Reporting Date:	2017/07/18		
Reporting Frequency:	monthly		
Period No.:	5		
Remittance Date:	2017/07/24		
Advance Payment Date:	2017/07/24		
Cash Adjustment Date:	2017/07/24		
Additional Entrustment Date:	2017/07/26		
Trust Calculation Date:	2017/07/26		
Trust Calculation Period:	2017/06/27	to	2017/07/26
First Trust Payment Date:	2017/07/27		
Second Trust Payment Date:	2017/07/28		
Interest Calculation Period:	2017/06/29	to	2017/07/28
Next Reporting Date:	2017/08/18		

Pool information at the Initial Cut off Date

	Number of Contracts	Outstanding Discounted Principal Balance	Outstanding Nominal Balance
Outstanding Pool	30,757	64,171,706,472 JPY	67,028,993,300 JPY

Credit Type	Percentage of Loans	Outstanding Discounted Principal Balance	Percentage of Balance
Balloon	76.13 %	55,443,642,000 JPY	86.40 %
Equal Instalment Loan	23.87 %	8,728,064,472 JPY	13.60 %
Total	100.00 %	64,171,706,472 JPY	100.00 %

Type of Car	Percentage of Loans	Outstanding Discounted Principal Balance	Percentage of Balance
New	66.66 %	49,506,381,305 JPY	77.15 %
Used	33.34 %	14,665,325,167 JPY	22.85 %
Total	100.00 %	64,171,706,472 JPY	100.00 %

Deal Overview: Counterparties I

Joint Lead Managers:

Shinsei Securities Co., Ltd.
 Nihonbashi Muromachi Nomura Building, 4-3,
 Nihonbashi-muromachi 2-chome,
 Chuo-ku,
 Tokyo 103-0022, Japan

BNP Paribas Securities (Japan) Limited
 GranTokyo North Tower, 9-1,
 Marunouchi 1-chome,
 Chiyoda-ku,
 Tokyo 100-6740, Japan

Trust Management Account Bank:

The Bank of Tokyo-Mitsubishi UFJ, Ltd.
 4-2 Toranomon 1-chome,
 Minato-ku
 Tokyo 105-0001, Japan

Rating								
Moody's			Fitch			R&I		
Long Term	Short Term	Outlook	Long Term	Short Term	Outlook	Long Term	Short Term	Outlook
n.a.	n.a.	n.a.	n.a.	n.a.	n.a.	n.a.	n.a.	n.a.
n.a.	n.a.	n.a.	n.a.	n.a.	n.a.	n.a.	n.a.	n.a.
A1	P-1	Stable	A	F1	Stable	AA-	a-1+	Stable

Originator:

Trustor of the First Trust:

Servicer:

Volkswagen Financial Services Japan Ltd.
 Gotenyama Trust Tower 17F
 7-35 Kitashinagawa 4-chome, Shinagawa-ku
 Tokyo 140-0001, Japan

Trustee of the First Trust:

Trustee of the Second Trust:

Deutsche Trust Company Limited Japan
 Attn.: Driver Japan Six
 Trust Business Administration Department

ABL Lender to the First Trust:

Trustor of the Second Trust:

Shinsei Securities Co., Ltd.

Seller of the Trust Beneficial

Interest of the Second Trust

Shinsei Securities Co., Ltd.
 BNP Paribas Securities (Japan) Limited

Deal Overview: Counterparties II

Rating Agencies:

Moody's SF Japan K.K.

Attn.: Driver Japan six
 Structure Finance Group Monitoring Division
 5-1 Atago 2-chome, Minato-ku
 Tokyo 105-6220, Japan
 E-mail: monitor.msfi@moodys.com

Fitch Ratings Japan Limited

Attn.: Driver Japan six
 Structured Finance
 Kojimachi Crystal City East Wing 3rd Floor,
 4-8 Kōjimachi, Chiyoda-ku,
 Tokyo 102-0083, Japan
 E-mail: tokyo.surveillance@fitchratings.com

Rating and Investment Information, Inc.

Attn.: Monitoring Group Department:
 Structured Finance Department
 TERRACE SQUARE, 3-22,
 Kanda Nishikicho, Chiyoda-ku,
 Tokyo 101-0054, Japan
 E-mail: sfmonitor@r-i.co.jp

Rating of VW

Volkswagen Financial Services AG

Volkswagen AG

Rating								
Moody's			Fitch			R&I		
Short Term	Long Term	Outlook	Short Term	Long Term	Outlook	Short Term	Long Term	Outlook
P-1	A2	Negative	n.a.	n.a.	n.a.	n.a.	n.a.	n.a.
P-2	A3	Negative	F2	BBB+	Negative	n.a.	n.a.	n.a.

Information regarding Trust Beneficial Interest of the Second Trust & Asset Backed Loan to the Second Trust

Rating Details

Rating at Issue Date

	<u>TBI</u>	<u>ABL</u>
Moody's	Aaa(sf)	Aaa(sf)
Fitch	AAAsf	AAAsf
R&I	AAA	AAA

Current Rating

	<u>TBI</u>	<u>ABL</u>
Moody's	Aaa(sf)	Aaa(sf)
Fitch	AAAsf	AAAsf
R&I	AAA	AAA

Information on TBI & ABL

	<u>TBI</u>	<u>ABL</u>
Initial Balance	39,200,000,000 JPY	20,800,000,000 JPY
Expected Maturity Date	2021/03/29	2021/03/29
Legal Maturity of the Second Trust	2025/06/30	2025/06/30
Payment Dates	28th	28th
Business Day Convention	Modified Following	Modified Following
Listing	None	—

Information on Interest

	<u>TBI</u>	<u>ABL</u>
Fixed/ Floating	Fixed	Fixed
Current Coupon	0.19%	0.19%
Day Count Convention	30/360	30/360

Selling Restriction

The holders of the Beneficial Interest and the ABL Lenders* are prohibited from dividing, assigning, pledging or creating any other security interest over any of the Beneficial Interest and the Asset Backed Loans without the prior written approval of the Trustee of the Second Trust.

(*)The holders of the Beneficial Interest and the ABL Lenders are limited to specified investors (*tokutei toushika*) as defined under Paragraph 31 of Article 2 of the Financial Instruments and Exchange Act (Law no.25 of 1948 as amended).

Clean-Up Call

VWFS Japan as the Trustor of the First Trust has a right at its option to exercise a clean-up call to repurchase of all, but not part, of the outstanding Auto Loan Receivables from the Trustee of the First Trust on any Trust Calculation Date, the Discounted Principal Balance of all outstanding Auto Loan Receivables is expected to be less than ten percent (10%) of the Discounted Principal Balance of the Initial Auto Loan Receivables as of the Initial Cut-off Date after the distribution pursuant to Article 18.1 of the First Trust Agreement on the immediately following First Trust Payment Date.

Pool Information
Pool Balance on Initial Cut-Off Date

Status	Number of Contracts	Outstanding Discounted Principal Balance
Normal	30,757	64,171,706,472 JPY
Cancellation	0	0 JPY
Early Termination	0	0 JPY
Defaulted Receivables	0	0 JPY
Matured	0	0 JPY
Refinance Option	0	0 JPY
Repurchase	0	0 JPY
Total	30,757	64,171,706,472 JPY

Pool Balance before entrustment of Additional Auto Loan Receivables

Status	Number of Contracts on previous EoP	Outstanding Discounted Principal Balance on previous EoP	Number of Contracts "as Collections" during the relevant Monthly Period*	Outstanding Discounted Principal Balance "as Collections" during the relevant Monthly Period*	Number of Contracts EoP before entrustment of Additional Auto Loan Receivables	Outstanding Discounted Principal Balance EoP before entrustment of Additional Auto Loan Receivables
Normal	32,360	64,811,879,926 JPY	31,812	1,565,862,472 JPY	31,812	62,572,100,512 JPY
Cancellation	0	0 JPY	0	0 JPY	0	0 JPY
Early Termination	0	0 JPY	287	498,836,379 JPY	0	0 JPY
Defaulted Receivables	0	0 JPY	1	3,892,932 JPY	0	0 JPY
Matured	0	0 JPY	220	104,444,625 JPY	0	0 JPY
Refinance Option	0	0 JPY	40	66,743,006 JPY	0	0 JPY
Repurchase	0	0 JPY	0	0 JPY	0	0 JPY
Total	32,360	64,811,879,926 JPY	32,360	2,239,779,414 JPY	31,812	62,572,100,512 JPY

Pool Balance after entrustment of Additional Auto Loan Receivables

Status	Number of Contracts EoP before entrustment of Additional Auto Loan Receivables	Outstanding Discounted Principal Balance EoP before entrustment of Additional Auto Loan Receivables	Number of Contracts of Additional Auto Loan Receivables	Outstanding Discounted Principal Balance of Additional Auto Loan Receivables	Number of Contracts EoP after entrustment of Additional Auto Loan Receivables	Outstanding Discounted Principal Balance EoP after entrustment of Additional Auto Loan Receivables
Normal	31,812	62,572,100,512 JPY	1,096	2,446,577,341 JPY	32,908	65,018,677,853 JPY
Cancellation	0	0 JPY	0	0 JPY	0	0 JPY
Early Termination	0	0 JPY	0	0 JPY	0	0 JPY
Defaulted Receivables	0	0 JPY	0	0 JPY	0	0 JPY
Matured	0	0 JPY	0	0 JPY	0	0 JPY
Refinance Option	0	0 JPY	0	0 JPY	0	0 JPY
Repurchase	0	0 JPY	0	0 JPY	0	0 JPY
Total	31,812	62,572,100,512 JPY	1,096	2,446,577,341 JPY	32,908	65,018,677,853 JPY

Limits on Eligibility Criteria

Status Limits on Eligibility Criteria (v) (including Additional Entrustment)	Current Exposure in %	Limits in % of the aggregate Discounted Principal Balance of the Auto Loan Receivables outstanding	Status
(i) on Used Purchased Vehicle	22.50 %	35 %	OK
(ii) on Non-VW Vehicles	0.03 %	5 %	OK
(iii) on Balloon Payment	41.89 %	50 %	OK

Outstanding Balances

Monthly Period: from 2017/06/11 to 2017/07/10
 Reporting Date: 2017/07/18
 Trust Calculation Date: 2017/07/26

Outstanding Balances

	Number of Contracts	Aggregate Amount of the Discounted Principal Balance	Aggregate Amount of the Nominal Balance
Balance on the previous EoP	32,360	64,811,879,926 JPY	67,470,363,000 JPY
Balance after counting on the Collections during the relevant	31,812	62,572,100,512 JPY	65,099,655,200 JPY
Balance of Additional Auto Loan Receivables	1,096	2,446,577,341 JPY	2,558,022,900 JPY
Aggregate Amount of Auto Loan Receivables	32,908	65,018,677,853 JPY	67,657,678,100 JPY

Collections

	Number of Contracts	Aggregate Amount of the Discounted Principal Balance	Aggregate Amount of the Nominal Balance
Collections: Amortization of current contracts	31,812	1,565,862,472 JPY	1,680,585,600 JPY
Collections: Cancellation	0	0 JPY	0 JPY
Collections: Early Termination	287	498,836,379 JPY	499,804,217 JPY
Collections: Defaulted Receivables	1	3,892,932 JPY	3,912,516 JPY
Collections: Matured	220	104,444,625 JPY	104,602,500 JPY
Collections: Refinance Option	40	66,743,006 JPY	66,830,000 JPY
Collections: Repurchase	0	0 JPY	0 JPY
Sum	32,360	2,239,779,414 JPY	2,355,734,833 JPY

Available Distribution Amount

	Number of Contracts	Aggregate Amount of the Nominal Balance
(a) the Collections for the Monthly Period with respect to such Trust Calculation Date	32,360	2,355,734,833 JPY
(b) drawings from the Cash Collateral Ledger in accordance with Article 18.3 of the First Trust Agreement	0	0 JPY
(c) net investment earnings from Eligible Investments	0	0 JPY
(d) net proceeds from the sale or disposal of the Trust Assets of the First Trust	0	0 JPY
(e) any amount which is carried over from the immediately preceding Trust Calculation Date	0	0 JPY
Sum	32,360	2,355,734,833 JPY

Waterfall

There is no distinction between principal and interest, and all collections go through a single priority of payments			
		Payment	Remaining Amount
Available Distribution Amount	plus	2,355,734,833 JPY	2,355,734,833 JPY
(a) an amount necessary for the payment of all taxes and public charges to be paid to the relevant public authority by the immediately following First Trust Payment Date.	less	0 JPY	2,355,734,833 JPY
(b) an amount necessary for the payment of all Fees for the Trustee of the First Trust to be paid to the Trustee of the First Trust by the immediately following First Trust Payment Date.	less	583,305 JPY	2,355,151,528 JPY
(c) an amount necessary for the payment of the Servicing Fee to be paid to the Servicer by the immediately following First Trust Payment Date.	less	58,330,690 JPY	2,296,820,838 JPY
(d) an amount necessary for the payment of the Trust Expenses of the First Trust as provided in Article 23.1 (including the Rating Fees, Costs of the Second Trust and those fees not otherwise covered by (b) or (c) above) to be paid to the relevant party by the immediately following First Trust Payment Date (including any amounts advanced by the Trustee of the First Trust pursuant to Article 23.3)	less	598,101 JPY	2,296,222,737 JPY
(e) an amount necessary for the payment of overdue and unpaid interest on the Asset Backed Loans to the First Trust (if any) to be paid to the Trustee of the Second Trust by the immediately following First Trust Payment Date.	less	0 JPY	2,296,222,737 JPY
(f) an amount necessary for the payment to the Trustee of the Second Trust of interest on the Asset Backed Loan to the First Trust accruing during the relevant Interest Calculation Period	less	9,500,000 JPY	2,286,722,737 JPY
(g) an amount necessary to top up the balance thereof until it is equal to the Cash Collateral Ledger Target Balance	less	0 JPY	2,286,722,737 JPY
(h) (i) prior to the expiration of the Revolving Period: an amount necessary for the redemption of any Additional Senior Beneficial Interest;	less	2,286,722,737 JPY	0 JPY
(ii) following the expiration of the Revolving Period and prior to the occurrence of an Early Amortization Event, an amount necessary for the payment to the Trustee of the Second Trust of the Asset Backed Loan Principal Payment Amount for the relevant First Trust Payment Date.			
(iii) following the occurrence of the Early Amortization Event, an amount necessary for the payment to the Trustee of the Second Trust of the remaining principal balance of the Asset Backed Loan to the First Trust.			
(i) an amount necessary for the payment to the Trustee of the First Trust of any Indemnified Amounts which are not compensated by the Trustor of the First Trust	less	0 JPY	0 JPY
(j) an amount necessary for the payment to the Subordinated Beneficiary of the Subordinated Beneficial Principal Payment Amount for the relevant First Trust Payment Date.	less	0 JPY	0 JPY
(k) (i) prior to the expiration of the Revolving Period, then (x) if a transfer is made under (j) above, such remaining amount will be transferred to the Expenses Distribution Ledger for payment to the Subordinated Beneficiary as a payment of earnings on the Subordinated Beneficial Interest, and such payment shall be made on the First Trust Payment Date immediately following such Trust Calculation Date or (y) if no transfer is made under (j) above, such remaining amount will be carried forward to the next Trust Calculation Date.	less	0 JPY	0 JPY
(ii) following the expiration of the Revolving Period and prior to the occurrence of an Early Amortization Event, then such remaining amount will be transferred to the Expenses Distribution Ledger for payment to the Subordinated Beneficiary as a payment of earnings on the Subordinated Beneficial Interest, and such payment shall be made on the First Trust Payment Date immediately following such Trust Calculation Date.			
(iii) following the occurrence of an Early Amortization Event, the remaining amount in the Trust Collection Ledger will be carried forward to the next Trust Calculation Date.			

Credit Enhancement

Subordinated Principal Balance as of the relevant First Trust Payment Date

	Percentage of Aggregate Discounted Principal Balance	Value
(i) the aggregate amount of the Discounted Principal Balance of all Auto Loan Receivables outstanding		65,018,677,853 JPY
(ii) Asset Backed Loan Principal Balance on the relevant First Trust Payment Date		60,000,000,000 JPY
Overcollateralization (= (i) - (ii))	7.72 %	5,018,677,853 JPY
Trust Collection Ledger which is carried over from the immediately preceding Trust Calculation Date	0.00 %	0 JPY
The amount in the Cash Collateral Ledger	0.53 %	345,000,000 JPY
Subordinated Principal Balance	8.25 %	5,363,677,853 JPY

Trust Management Account (TMA)

	in JPY	+/-	in JPY (previous)
Initial Balance on Cash Entrustment Date	345,000,000 JPY		0 JPY
Outstanding Balance on First Trust Payment Date	345,000,000 JPY	0 JPY	345,000,000 JPY
(a) Expenses Distribution Ledger	0 JPY	0 JPY	0 JPY
(b) Trust Collection Ledger	0 JPY	0 JPY	0 JPY
(c) Cash Collateral Ledger	345,000,000 JPY	0 JPY	345,000,000 JPY
Cash Collateral Ledger Target Balance	345,000,000 JPY		

Calculation of Credit Enhancement

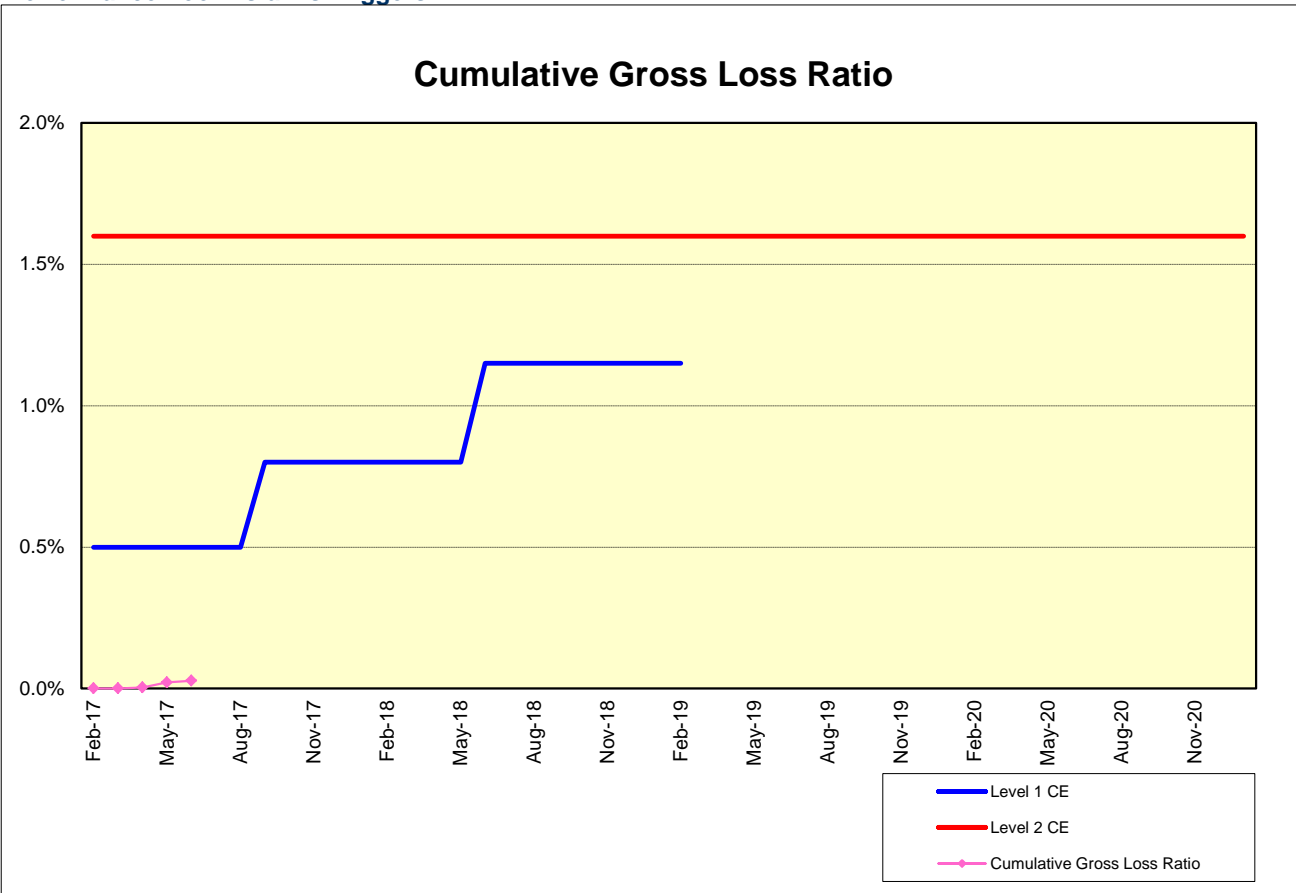
Driver Japan six's Credit Enhancement consists of the items listed above in the Subordinated Principal Balance as of the relevant date of determination (immediately following the First Trust Payment Date). The result provides an absolute value, which will be applied to the (amortized) Aggregate Discounted Principal Balance as of the end of the relevant date.

The transaction has a Revolving Period of 12 months until February 2018.

Asset Backed Loan Overcollateralization Percentage is (i) prior to the expiration of the Revolving Period, 8.5%, and (ii) following the expiration of the Revolving Period, 11.5%; provided, in each case no Credit Enhancement Increase Condition shall be in effect. After a Level 1 Credit Enhancement Increase Condition in effect, 17% and after a Level 2 Credit Enhancement Increase Condition is in effect, 100%.

Cumulative Gross Loss & Cumulative Repurchased Receivables

Performance Pool vis-a-vis Triggers



Cumulative Repurchased Receivables

	Number of Contracts	Repurchase Price
Beginning of Period	0	0 JPY
Repurchased Receivables	0	0 JPY
End of Period	0	0 JPY

Defaulted and Delinquent Contracts

Information of Delinquencies and Defaults

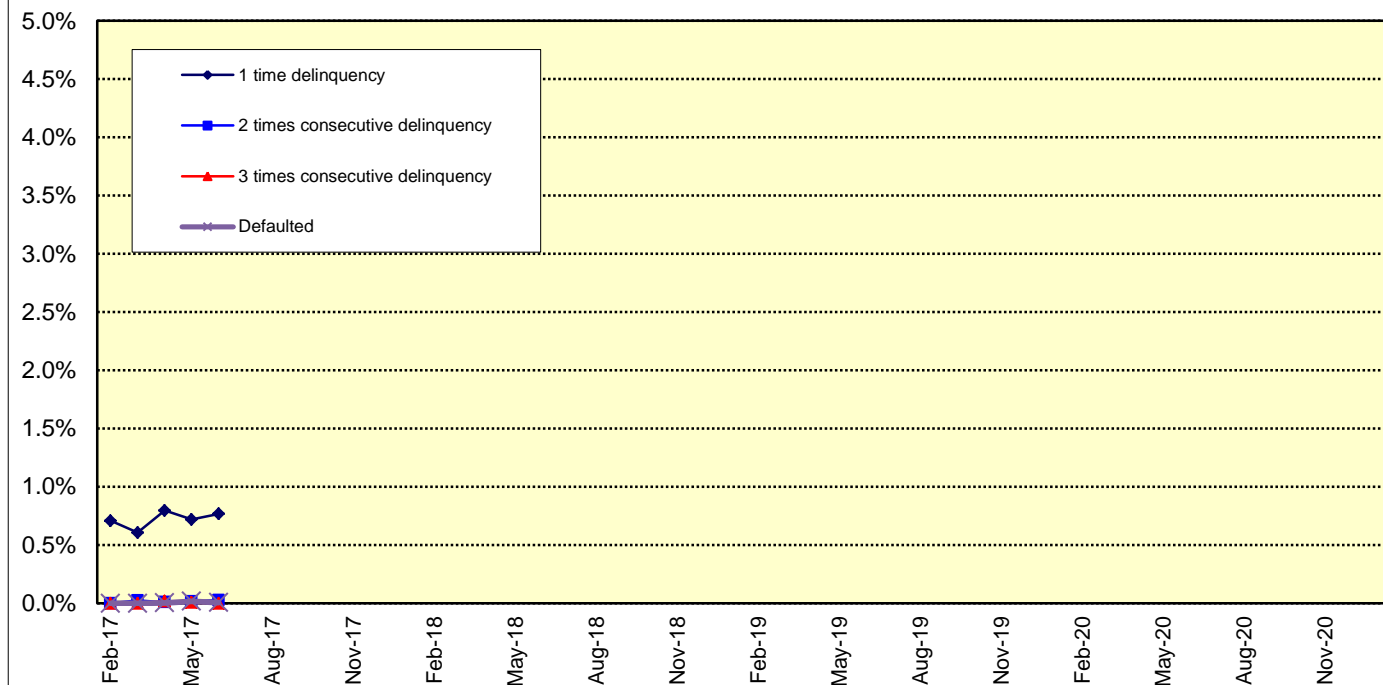
Current Reporting Period	Number of Contracts	Percentage of Contracts (*)	Outstanding Discounted Principal Balance	Percentage of Principal Balance (*)	Outstanding Nominal Balance	Percentage of Nominal Balance (*)
Delinquent	265	0.82 %	516,136,644 JPY	0.80 %	539,794,500 JPY	0.80 %
Default	1	0.00 %	3,892,932 JPY	0.01 %	3,912,516 JPY	0.01 %

(*) Based on the previous EoP

Delinquency Profile (Information Purpose Only)

Days in Arrears	Number of Contracts	Percentage of Contracts	Outstanding Discounted Principal Balance	Percentage of Principal Balance	Outstanding Nominal Balance	Percentage of Nominal Balance
1	257	0.78 %	499,113,852 JPY	0.77 %	522,148,300 JPY	0.77 %
2	8	0.02 %	17,022,792 JPY	0.03 %	17,646,200 JPY	0.03 %
3	0	0.00 %	0 JPY	0.00 %	0 JPY	0.00 %
Total	265	0.81 %	516,136,644 JPY	0.79 %	539,794,500 JPY	0.80 %

Delinquent / Defaulted (Gross Loss) Ratio



Run Out Schedule

ROS on the previous EoP on 2017/06/10

Next Payment Month	Number of Contracts	ABS Outstanding Principal	ABS Outstanding Interest	Outstanding Installment	ABS Remaining Principal	ABS Remaining Interest	ABS Remaining Installment
05.2017	32,360	64,811,879,926 JPY	2,658,483,074 JPY	67,470,363,000 JPY	0 JPY	0 JPY	0 JPY
06.2017	32,360	63,059,546,444 JPY	2,542,605,156 JPY	65,602,151,600 JPY	1,752,333,482 JPY	115,877,918 JPY	1,868,211,400 JPY
07.2017	32,098	61,159,783,122 JPY	2,429,929,678 JPY	63,589,712,800 JPY	1,899,763,322 JPY	112,675,478 JPY	2,012,438,800 JPY
08.2017	31,875	59,801,566,412 JPY	2,320,754,988 JPY	62,122,321,400 JPY	1,358,216,710 JPY	109,174,690 JPY	1,467,391,400 JPY
09.2017	31,634	58,334,744,591 JPY	2,214,041,609 JPY	60,548,786,200 JPY	1,466,821,821 JPY	106,713,379 JPY	1,573,535,200 JPY
10.2017	31,186	57,102,331,927 JPY	2,109,852,473 JPY	59,212,184,400 JPY	1,232,412,664 JPY	104,189,136 JPY	1,336,601,800 JPY
11.2017	30,920	55,795,460,709 JPY	2,007,872,791 JPY	57,803,333,500 JPY	1,306,871,218 JPY	101,979,682 JPY	1,408,850,900 JPY
12.2017	30,578	53,317,676,506 JPY	1,908,214,294 JPY	55,225,890,800 JPY	2,477,784,203 JPY	99,658,497 JPY	2,577,442,700 JPY
01.2018	30,063	51,742,271,551 JPY	1,812,919,649 JPY	53,555,191,200 JPY	1,575,404,955 JPY	95,294,645 JPY	1,670,699,600 JPY
02.2018	29,637	50,254,772,905 JPY	1,720,484,795 JPY	51,975,257,700 JPY	1,487,498,646 JPY	92,434,854 JPY	1,579,933,500 JPY
03.2018	29,004	48,249,282,328 JPY	1,630,630,572 JPY	49,879,912,900 JPY	2,005,490,577 JPY	89,854,223 JPY	2,095,344,800 JPY
04.2018	27,857	47,034,557,960 JPY	1,543,881,740 JPY	48,578,439,700 JPY	1,214,724,368 JPY	86,748,832 JPY	1,301,473,200 JPY
05.2018	27,474	45,637,275,248 JPY	1,459,291,452 JPY	47,096,566,700 JPY	1,397,282,712 JPY	84,590,288 JPY	1,481,873,000 JPY
06.2018	26,893	43,589,761,435 JPY	1,377,093,465 JPY	44,966,854,900 JPY	2,047,513,813 JPY	82,197,987 JPY	2,129,711,800 JPY
07.2018	26,096	41,746,843,092 JPY	1,298,389,208 JPY	43,045,232,300 JPY	1,842,918,343 JPY	78,704,257 JPY	1,921,622,600 JPY
08.2018	25,506	40,348,189,869 JPY	1,223,015,331 JPY	41,571,205,200 JPY	1,398,653,223 JPY	75,373,877 JPY	1,474,027,100 JPY
09.2018	24,992	38,793,025,611 JPY	1,150,162,189 JPY	39,943,187,800 JPY	1,555,164,258 JPY	72,853,142 JPY	1,628,017,400 JPY
10.2018	24,169	37,631,535,785 JPY	1,080,023,715 JPY	38,711,559,500 JPY	1,161,489,826 JPY	70,138,474 JPY	1,231,628,300 JPY
11.2018	23,711	36,394,448,591 JPY	1,012,015,009 JPY	37,400,463,600 JPY	1,237,087,194 JPY	68,008,706 JPY	1,369,050,900 JPY
12.2018	23,125	34,048,260,801 JPY	946,201,599 JPY	34,994,462,400 JPY	2,346,187,790 JPY	65,813,410 JPY	2,412,001,200 JPY
01.2019	22,311	32,558,276,495 JPY	884,599,505 JPY	33,442,876,000 JPY	1,489,984,306 JPY	61,602,094 JPY	1,551,586,400 JPY
02.2019	21,800	31,107,481,035 JPY	825,684,465 JPY	31,933,165,500 JPY	1,450,795,460 JPY	58,915,040 JPY	1,509,710,500 JPY
03.2019	21,064	29,087,941,364 JPY	769,348,436 JPY	29,857,289,800 JPY	2,019,539,671 JPY	56,336,029 JPY	2,075,875,700 JPY
04.2019	19,859	27,771,758,929 JPY	716,476,871 JPY	28,488,235,800 JPY	1,316,182,435 JPY	52,871,565 JPY	1,369,054,000 JPY
05.2019	19,328	26,299,332,190 JPY	665,856,110 JPY	26,965,188,300 JPY	1,472,426,739 JPY	50,620,761 JPY	1,523,047,500 JPY
06.2019	18,614	24,248,438,835 JPY	617,708,965 JPY	23,866,147,800 JPY	2,050,893,355 JPY	48,147,145 JPY	2,099,040,500 JPY
07.2019	17,697	22,527,425,226 JPY	572,973,774 JPY	23,100,399,000 JPY	1,721,013,609 JPY	44,735,191 JPY	1,765,748,800 JPY
08.2019	17,034	21,065,952,179 JPY	531,177,421 JPY	21,597,129,600 JPY	1,461,473,047 JPY	41,796,353 JPY	1,503,269,400 JPY
09.2019	16,315	19,205,333,418 JPY	491,714,482 JPY	19,697,047,900 JPY	1,860,618,761 JPY	39,462,939 JPY	1,900,081,700 JPY
10.2019	15,219	17,909,570,002 JPY	455,085,998 JPY	18,364,656,000 JPY	1,295,763,416 JPY	36,628,484 JPY	1,332,391,900 JPY
11.2019	14,507	16,278,404,853 JPY	420,576,547 JPY	16,698,981,400 JPY	1,631,165,149 JPY	34,509,451 JPY	1,665,674,600 JPY
12.2019	13,560	15,151,643,675 JPY	388,531,825 JPY	15,540,175,500 JPY	1,126,761,178 JPY	32,044,722 JPY	1,158,805,900 JPY
01.2020	13,184	14,436,633,003 JPY	358,657,897 JPY	14,795,290,900 JPY	715,010,672 JPY	29,873,928 JPY	744,884,600 JPY
02.2020	12,913	13,850,215,454 JPY	330,184,746 JPY	14,180,400,200 JPY	586,417,549 JPY	28,473,151 JPY	614,890,700 JPY
03.2020	12,575	13,256,401,172 JPY	302,880,628 JPY	13,559,281,800 JPY	593,814,282 JPY	27,304,118 JPY	621,118,400 JPY
04.2020	12,176	12,824,780,902 JPY	276,756,998 JPY	13,101,537,900 JPY	431,620,270 JPY	26,123,630 JPY	457,743,900 JPY
05.2020	12,039	12,353,122,967 JPY	251,520,633 JPY	12,604,643,600 JPY	471,657,935 JPY	25,236,365 JPY	496,894,300 JPY
06.2020	11,795	11,700,858,656 JPY	227,261,344 JPY	11,928,120,000 JPY	652,264,311 JPY	24,259,289 JPY	676,523,600 JPY
07.2020	11,551	11,007,506,592 JPY	204,331,508 JPY	11,211,838,100 JPY	693,352,064 JPY	22,929,836 JPY	716,281,900 JPY
08.2020	11,335	10,502,322,871 JPY	182,801,129 JPY	10,685,124,000 JPY	505,183,721 JPY	21,530,379 JPY	526,714,100 JPY
09.2020	11,067	10,006,121,898 JPY	162,296,202 JPY	10,168,418,100 JPY	496,200,973 JPY	20,504,927 JPY	516,705,900 JPY
10.2020	10,720	9,572,913,321 JPY	142,819,679 JPY	9,715,733,000 JPY	433,208,577 JPY	19,476,523 JPY	452,685,100 JPY
11.2020	10,476	9,114,877,337 JPY	124,233,263 JPY	9,239,110,600 JPY	458,035,984 JPY	18,586,416 JPY	476,622,400 JPY
12.2020	10,174	8,277,870,118 JPY	106,603,482 JPY	8,384,473,600 JPY	837,007,219 JPY	17,629,781 JPY	854,633,000 JPY
01.2021	9,773	7,591,442,036 JPY	90,677,564 JPY	7,682,119,600 JPY	686,428,082 JPY	15,925,918 JPY	702,354,000 JPY
02.2021	9,261	6,829,504,025 JPY	76,067,575 JPY	6,905,571,600 JPY	761,938,011 JPY	14,609,989 JPY	776,548,000 JPY
03.2021	8,511	5,938,427,585 JPY	62,900,615 JPY	6,001,328,200 JPY	891,076,960 JPY	13,166,960 JPY	904,243,400 JPY
04.2021	7,442	5,438,432,979 JPY	51,404,421 JPY	5,489,837,400 JPY	499,994,606 JPY	11,496,194 JPY	511,490,800 JPY
05.2021	6,931	4,874,708,087 JPY	40,917,913 JPY	4,915,626,000 JPY	563,724,892 JPY	10,486,508 JPY	574,211,400 JPY
06.2021	6,237	4,196,487,439 JPY	31,540,161 JPY	4,228,027,600 JPY	678,220,648 JPY	9,377,752 JPY	687,598,400 JPY
07.2021	5,491	3,453,511,174 JPY	23,549,726 JPY	3,477,060,900 JPY	742,976,265 JPY	7,990,435 JPY	750,966,700 JPY
08.2021	4,717	2,770,464,447 JPY	16,993,553 JPY	2,787,458,000 JPY	683,046,127 JPY	6,556,173 JPY	689,602,900 JPY
09.2021	3,852	1,847,277,586 JPY	11,684,214 JPY	1,858,961,800 JPY	923,186,861 JPY	5,309,339 JPY	928,496,200 JPY
10.2021	2,675	1,279,187,031 JPY	8,118,469 JPY	1,287,305,500 JPY	568,090,555 JPY	3,565,745 JPY	571,656,300 JPY
11.2021	1,921	568,967,266 JPY	5,601,234 JPY	574,568,500 JPY	710,219,765 JPY	2,517,235 JPY	712,737,000 JPY
12.2021	940	402,639,338 JPY	4,368,962 JPY	407,008,300 JPY	166,327,928 JPY	1,232,272 JPY	167,560,200 JPY
01.2022	765	292,142,347 JPY	3,472,453 JPY	295,614,800 JPY	110,496,991 JPY	896,509 JPY	111,393,500 JPY
02.2022	637	211,561,172 JPY	2,799,628 JPY	214,360,800 JPY	80,581,175 JPY	672,825 JPY	81,254,000 JPY
03.2022	532	138,395,238 JPY	2,289,262 JPY	140,684,500 JPY	73,165,934 JPY	510,366 JPY	73,676,300 JPY
04.2022	421	122,181,188 JPY	1,921,212 JPY	124,102,400 JPY	16,214,050 JPY	368,050 JPY	16,582,100 JPY
05.2022	398	106,766,119 JPY	1,592,781 JPY	108,358,900 JPY	15,415,069 JPY	328,431 JPY	15,743,500 JPY
06.2022	368	86,956,073 JPY	1,301,827 JPY	88,257,900 JPY	19,810,046 JPY	290,954 JPY	20,101,000 JPY
07.2022	328	66,703,949 JPY	1,058,851 JPY	67,762,800 JPY	20,252,124 JPY	242,976 JPY	20,495,100 JPY
08.2022	288	53,890,332 JPY	863,968 JPY	54,754,300 JPY	12,813,617 JPY	194,883 JPY	13,008,500 JPY
09.2022	209	45,631,333 JPY	699,667 JPY	46,331,000 JPY	8,258,999 JPY	164,301 JPY	8,423,300 JPY
10.2022	161	39,025,167 JPY	558,033 JPY	39,583,200 JPY	6,606,166 JPY	141,634 JPY	6,747,800 JPY
11.2022	135	33,272,931 JPY	435,669 JPY	33,708,600 JPY	5,752,236 JPY	122,364 JPY	5,874,600 JPY
12.2022	107	24,733,220 JPY	330,580 JPY	25,063,800 JPY	8,539,711 JPY	105,089 JPY	8,644,800 JPY
01.2023	88	19,499,392 JPY	252,208 JPY	19,751,600 JPY	5,233,828 JPY	78,372 JPY	5,312,200 JPY
02.2023	78	16,020,364 JPY	190,236 JPY	16,210,600 JPY	3,479,028 JPY	61,972 JPY	3,541,000 JPY
03.2023	64	13,119,251 JPY	139,249 JPY	13,258,500 JPY	2,901,113 JPY	50,987 JPY	2,952,100 JPY
04.2023	57	10,437,239 JPY	97,461 JPY	10,534,700 JPY	2,682,012 JPY	41,788 JPY	2,723,800 JPY
05.2023	52	7,934,483 JPY	64,217 JPY	7,998,700 JPY	2,502,756 JPY	33,244 JPY	2,536,000 JPY
06.2023	40	5,378,159 JPY	38,941 JPY	5,417,100 JPY	2,556,324 JPY	25,276 JPY	2,581,600 JPY
07.2023	29	3,611,888 JPY	21,812 JPY	3,633,700 JPY	1,766,271 JPY	17,129 JPY	1,783,400 JPY
08.2023	27	1,836,392 JPY	10,308 JPY	1,846,700 JPY	1,775,496 JPY	11,504 JPY	1,787,000 JPY
09.2023	21	793,839 JPY	4,461 JPY	798,300 JPY	1,042,553 JPY	5,847 JPY	1,048,400 JPY
10.2023	9	354,667 JPY	1,933 JPY	356,600 JPY	439,172 JPY	2,528 JPY	441,700 JPY
11.2023	4	201,197 JPY	803 JPY	202,000 JPY	153,470 JPY	1,130 JPY	154,600 JPY
12.2023	1	50,838 JPY	162 JPY	51,000 JPY	150,359 JPY	641 JPY	151,000 JPY
01.2024	1	0 JPY	0 JPY	0 JPY	50,838 JPY	162 JPY	51,000 JPY

Run Out Schedule

ROS on the relevant EoP on 2017/07/10

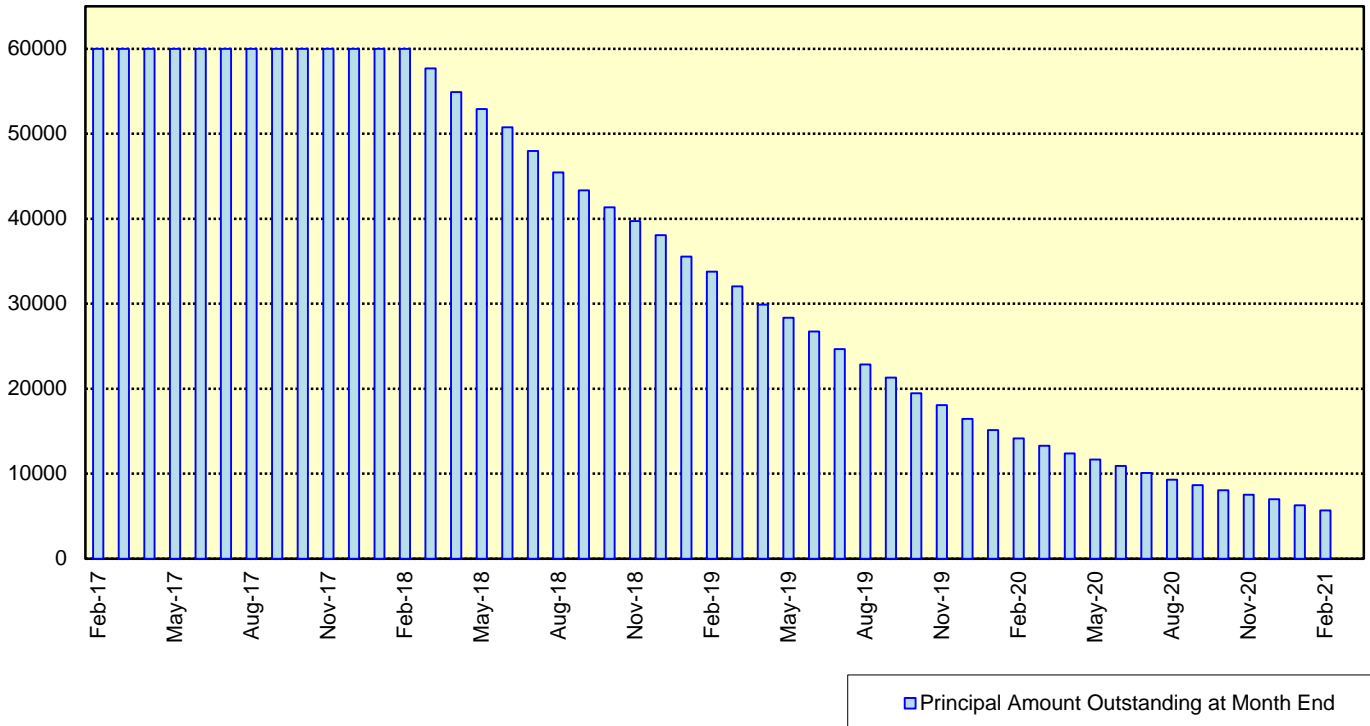
Next Payment Month	Number of Contracts	ABS Outstanding Principal	ABS Outstanding Interest	Outstanding Installment	ABS Remaining Principal	ABS Remaining Interest	ABS Remaining Installment
06.2017	32,908	65,018,677,853 JPY	2,639,000,247 JPY	67,657,678,100 JPY	0 JPY	0 JPY	0 JPY
07.2017	32,908	63,099,305,262 JPY	2,522,951,638 JPY	65,622,256,900 JPY	1,919,372,591 JPY	116,048,609 JPY	2,035,421,200 JPY
08.2017	32,699	61,712,854,903 JPY	2,410,443,997 JPY	64,123,298,900 JPY	1,386,450,359 JPY	112,507,641 JPY	1,498,958,000 JPY
09.2017	32,460	60,222,503,432 JPY	2,300,446,568 JPY	62,522,950,000 JPY	1,490,351,471 JPY	109,997,429 JPY	1,600,348,900 JPY
10.2017	32,014	58,963,310,486 JPY	2,193,016,214 JPY	61,156,326,700 JPY	1,259,192,946 JPY	107,430,354 JPY	1,366,623,300 JPY
11.2017	31,747	57,630,758,082 JPY	2,087,840,318 JPY	59,718,598,400 JPY	1,332,552,404 JPY	105,175,896 JPY	1,437,728,300 JPY
12.2017	31,409	55,103,417,514 JPY	1,985,031,786 JPY	57,088,449,300 JPY	2,527,340,568 JPY	102,808,532 JPY	2,630,149,100 JPY
01.2018	30,888	53,497,656,464 JPY	1,886,679,036 JPY	55,384,335,500 JPY	1,605,761,050 JPY	98,352,750 JPY	1,704,113,800 JPY
02.2018	30,462	51,983,937,920 JPY	1,791,238,480 JPY	53,775,176,400 JPY	1,513,718,544 JPY	95,440,556 JPY	1,609,159,100 JPY
03.2018	29,822	49,933,391,764 JPY	1,698,428,636 JPY	51,631,820,400 JPY	2,050,546,156 JPY	92,809,844 JPY	2,143,356,000 JPY
04.2018	28,660	48,690,212,962 JPY	1,608,792,138 JPY	50,299,005,100 JPY	1,243,178,802 JPY	89,636,498 JPY	1,332,815,300 JPY
05.2018	28,276	47,266,916,581 JPY	1,521,370,419 JPY	48,788,287,000 JPY	1,423,296,381 JPY	87,421,719 JPY	1,510,718,100 JPY
06.2018	27,696	45,177,780,797 JPY	1,436,386,603 JPY	46,614,167,400 JPY	2,089,135,784 JPY	84,983,816 JPY	2,174,119,600 JPY
07.2018	26,893	43,292,463,548 JPY	1,354,969,352 JPY	44,647,432,900 JPY	1,885,317,249 JPY	81,417,251 JPY	1,969,734,500 JPY
08.2018	26,302	41,855,235,872 JPY	1,276,957,528 JPY	43,132,193,400 JPY	1,437,227,676 JPY	78,011,824 JPY	1,515,239,500 JPY
09.2018	25,783	40,264,317,048 JPY	1,201,531,752 JPY	41,465,848,800 JPY	1,590,918,824 JPY	75,425,776 JPY	1,666,344,600 JPY
10.2018	24,949	39,077,174,252 JPY	1,128,882,048 JPY	40,206,056,300 JPY	1,187,142,796 JPY	72,649,704 JPY	1,259,792,500 JPY
11.2018	24,486	37,809,445,335 JPY	1,058,404,665 JPY	38,867,850,000 JPY	1,267,728,917 JPY	70,477,383 JPY	1,338,206,300 JPY
12.2018	23,894	35,407,276,736 JPY	990,178,664 JPY	36,397,455,400 JPY	2,402,168,599 JPY	68,226,001 JPY	2,470,394,900 JPY
01.2019	23,063	33,883,556,992 JPY	926,262,208 JPY	34,809,819,200 JPY	1,523,719,744 JPY	63,916,456 JPY	1,587,636,200 JPY
02.2019	22,540	32,402,579,316 JPY	865,090,484 JPY	33,667,669,800 JPY	1,480,977,676 JPY	61,171,724 JPY	1,542,149,400 JPY
03.2019	21,797	30,350,116,659 JPY	806,548,841 JPY	31,156,665,500 JPY	2,052,462,657 JPY	58,541,643 JPY	2,111,004,300 JPY
04.2019	20,573	28,998,904,662 JPY	751,527,138 JPY	29,750,431,800 JPY	1,351,211,997 JPY	55,021,703 JPY	1,406,233,700 JPY
05.2019	20,028	27,502,371,319 JPY	698,818,581 JPY	28,201,189,900 JPY	1,496,533,343 JPY	52,708,557 JPY	1,579,241,900 JPY
06.2019	19,316	25,418,935,066 JPY	648,619,234 JPY	26,067,554,300 JPY	2,083,436,253 JPY	50,199,347 JPY	2,133,635,600 JPY
07.2019	18,403	23,652,244,644 JPY	601,885,356 JPY	24,254,130,000 JPY	1,766,690,422 JPY	46,733,878 JPY	1,813,424,300 JPY
08.2019	17,731	22,161,278,151 JPY	558,169,949 JPY	22,719,448,100 JPY	1,490,966,493 JPY	43,715,407 JPY	1,534,681,900 JPY
09.2019	17,007	20,256,235,077 JPY	516,840,323 JPY	20,773,075,400 JPY	1,905,043,074 JPY	41,329,626 JPY	1,946,372,700 JPY
10.2019	15,895	18,918,168,449 JPY	478,418,451 JPY	19,396,586,900 JPY	1,338,066,628 JPY	38,421,872 JPY	1,376,488,500 JPY
11.2019	15,170	17,247,080,640 JPY	442,187,660 JPY	17,689,268,300 JPY	1,671,087,809 JPY	36,230,791 JPY	1,707,318,600 JPY
12.2019	14,215	16,022,153,850 JPY	408,484,950 JPY	16,430,638,800 JPY	1,224,926,790 JPY	33,702,710 JPY	1,258,629,500 JPY
01.2020	13,804	15,244,732,029 JPY	377,099,771 JPY	15,621,831,800 JPY	777,421,821 JPY	31,385,179 JPY	808,807,000 JPY
02.2020	13,504	14,584,207,249 JPY	347,219,351 JPY	14,931,426,600 JPY	660,524,780 JPY	29,880,420 JPY	690,405,200 JPY
03.2020	13,122	13,855,758,350 JPY	318,612,350 JPY	14,174,370,700 JPY	728,448,899 JPY	28,607,001 JPY	757,055,900 JPY
04.2020	12,630	13,363,667,005 JPY	291,369,595 JPY	13,655,036,600 JPY	492,091,345 JPY	27,242,755 JPY	519,334,100 JPY
05.2020	12,467	12,879,694,840 JPY	265,101,860 JPY	13,144,796,700 JPY	483,972,165 JPY	26,267,735 JPY	510,239,900 JPY
06.2020	12,224	12,207,674,506 JPY	239,836,394 JPY	12,447,510,900 JPY	672,020,334 JPY	25,265,466 JPY	697,285,800 JPY
07.2020	11,975	11,491,994,177 JPY	215,940,223 JPY	11,707,934,400 JPY	715,680,329 JPY	23,896,171 JPY	739,576,500 JPY
08.2020	11,757	10,968,541,511 JPY	193,486,189 JPY	11,162,027,700 JPY	523,452,666 JPY	22,454,034 JPY	545,906,700 JPY
09.2020	11,486	10,456,046,668 JPY	172,093,432 JPY	10,628,140,100 JPY	512,494,843 JPY	21,392,757 JPY	533,887,600 JPY
10.2020	11,131	10,008,045,839 JPY	151,761,261 JPY	10,159,807,100 JPY	448,000,829 JPY	20,332,171 JPY	468,333,000 JPY
11.2020	10,880	9,536,444,302 JPY	132,348,498 JPY	9,668,792,800 JPY	471,601,537 JPY	19,412,763 JPY	491,014,300 JPY
12.2020	10,576	8,670,172,142 JPY	113,920,858 JPY	8,784,093,000 JPY	866,272,160 JPY	18,427,640 JPY	884,699,800 JPY
01.2021	10,163	7,962,987,412 JPY	97,252,388 JPY	8,060,239,800 JPY	707,184,730 JPY	16,668,470 JPY	723,853,200 JPY
02.2021	9,642	7,181,928,104 JPY	81,939,396 JPY	7,263,867,500 JPY	781,059,308 JPY	15,312,992 JPY	796,372,300 JPY
03.2021	8,872	6,267,580,722 JPY	68,106,078 JPY	6,335,686,800 JPY	914,347,382 JPY	13,833,318 JPY	928,180,700 JPY
04.2021	7,780	5,753,095,478 JPY	55,984,522 JPY	5,809,080,000 JPY	514,485,244 JPY	12,121,556 JPY	526,606,800 JPY
05.2021	7,256	5,173,403,544 JPY	44,900,756 JPY	5,218,304,300 JPY	579,691,934 JPY	11,083,766 JPY	590,775,700 JPY
06.2021	6,557	4,476,047,320 JPY	34,957,380 JPY	4,511,004,700 JPY	697,356,224 JPY	9,943,376 JPY	707,299,600 JPY
07.2021	5,797	3,710,335,853 JPY	26,438,547 JPY	3,736,774,400 JPY	765,711,467 JPY	8,518,833 JPY	774,230,300 JPY
08.2021	5,013	3,015,956,383 JPY	19,398,017 JPY	3,035,354,400 JPY	694,379,470 JPY	7,040,530 JPY	701,420,400 JPY
09.2021	4,143	2,076,118,798 JPY	13,628,102 JPY	2,089,746,900 JPY	939,837,585 JPY	5,769,915 JPY	945,607,500 JPY
10.2021	2,953	1,491,505,352 JPY	9,636,748 JPY	1,501,142,100 JPY	584,613,446 JPY	3,991,354 JPY	588,604,800 JPY
11.2021	2,188	765,856,209 JPY	6,727,691 JPY	772,583,900 JPY	725,649,143 JPY	2,909,057 JPY	728,558,200 JPY
12.2021	1,195	559,017,463 JPY	5,134,237 JPY	564,151,700 JPY	206,838,746 JPY	1,593,454 JPY	208,432,200 JPY
01.2022	989	412,500,211 JPY	3,949,289 JPY	416,449,500 JPY	146,517,252 JPY	1,184,948 JPY	147,702,200 JPY
02.2022	817	297,672,495 JPY	3,057,305 JPY	300,729,800 JPY	114,827,716 JPY	891,984 JPY	115,719,700 JPY
03.2022	666	160,972,518 JPY	2,396,682 JPY	163,369,200 JPY	136,699,977 JPY	660,623 JPY	137,360,600 JPY
04.2022	467	125,480,670 JPY	1,989,830 JPY	127,470,500 JPY	35,491,848 JPY	406,852 JPY	35,898,700 JPY
05.2022	407	109,716,672 JPY	1,652,328 JPY	111,369,000 JPY	15,763,998 JPY	337,502 JPY	16,101,500 JPY
06.2022	377	89,556,782 JPY	1,353,218 JPY	90,910,000 JPY	20,159,890 JPY	299,110 JPY	20,459,000 JPY
07.2022	336	68,931,396 JPY	1,103,004 JPY	70,034,400 JPY	20,625,386 JPY	250,214 JPY	20,875,600 JPY
08.2022	295	55,853,414 JPY	901,886 JPY	56,755,300 JPY	13,077,982 JPY	201,118 JPY	13,279,100 JPY
09.2022	215	47,347,560 JPY	732,040 JPY	48,079,600 JPY	8,505,854 JPY	169,846 JPY	8,675,700 JPY
10.2022	167	40,493,875 JPY	585,525 JPY	41,079,400 JPY	6,853,685 JPY	146,515 JPY	7,000,200 JPY
11.2022	140	34,539,457 JPY	458,943 JPY	34,998,400 JPY	5,954,418 JPY	126,582 JPY	6,081,000 JPY
12.2022	111	25,814,045 JPY	350,155 JPY	26,164,200 JPY	8,725,412 JPY	108,788 JPY	8,834,200 JPY
01.2023	92	20,394,022 JPY	268,578 JPY	20,662,600 JPY	5,420,023 JPY	81,577 JPY	5,501,600 JPY
02.2023	82	16,728,304 JPY	203,896 JPY	16,932,200 JPY	3,665,718 JPY	64,682 JPY	3,730,400 JPY
03.2023	67	13,715,004 JPY	150,696 JPY	13,865,700 JPY	3,013,300 JPY	53,200 JPY	3,066,500 JPY
04.2023	58	10,979,690 JPY	107,010 JPY	11,086,700 JPY	2,735,314 JPY	43,686 JPY	2,779,000 JPY
05.2023	53	8,423,462 JPY	72,038 JPY	8,495,500 JPY	2,556,228 JPY	34,972 JPY	2,591,200 JPY
06.2023	41	5,813,496 JPY	45,204 JPY	5,858,700 JPY	2,609,966 JPY	26,834 JPY	2,636,800 JPY
07.2023	30	3,993,412 JPY	26,688 JPY	4,020,100 JPY	1,820,084 JPY	18,516 JPY	1,838,600 JPY
08.2023	28	2,163,931 JPY	13,969 JPY	2,177,900 JPY	1,829,481 JPY	12,719 JPY	1,842,200 JPY
09.2023	22	1,067,221 JPY	7,079 JPY	1,074,300 JPY	1,096,710 JPY	6,890 JPY	1,103,600 JPY
10.2023	10	573,720 JPY	3,680 JPY	577,400 JPY	493,501 JPY	3,399 JPY	496,900 JPY
11.2023	5	365,748 JPY	1,852 JPY	367,600 JPY	207,972 JPY	1,828 JPY	209,800 JPY
12.2023	2	160,713 JPY	687 JPY	161,400 JPY	205,035 JPY	1,165 JPY	206,200 JPY
01.2024	2	55,025 JPY	175 JPY	55,200 JPY	105,688 JPY	512 JPY	106,200 JPY
02.2024	1	0 JPY	0 JPY	0 JPY	55,025 JPY	175 JPY	55,200 JPY

Expected Amortisation

Expected Amortization to the Second Trust

JPY mil.

Assuming a Clean-Up Call at 10% of the Initial Outstanding Balance, annual prepayments of 10% and 0% defaults.



Distribution by Sub-Servicer

Sub-Servicer	Number of Loans	Percentage of Loans	Outstanding Principal Balance	Percentage of Balance
Cedyna	19,589	59.53 %	39,594,567,029 JPY	60.90 %
Jaccs	13,319	40.47 %	25,424,110,824 JPY	39.10 %
Total	32,908	100.00 %	65,018,677,853 JPY	100.00 %

Distribution by Brand

Make	Number of Loans	Percentage of Loans	Outstanding Discounted Principal Balance	Percentage of Balance
VW	21,008	63.84 %	33,912,541,230 JPY	52.16 %
Audi	11,859	36.04 %	30,957,965,647 JPY	47.61 %
Bentley	14	0.04 %	91,766,807 JPY	0.14 %
Lamborghini	6	0.02 %	37,813,151 JPY	0.06 %
Other	21	0.06 %	18,591,018 JPY	0.03 %
Total	32,908	100.00 %	65,018,677,853 JPY	100.00 %

Distribution by New and Used
Distribution by New and Used

New or Used	Number of Loans	Percentage of Loans	Outstanding Discounted Principal Balance	Percentage of Balance
New	21,990	66.82 %	50,391,409,491 JPY	77.50 %
Used	8,135	24.72 %	13,083,900,337 JPY	20.12 %
Used (Prolonged)	2,783	8.46 %	1,543,368,025 JPY	2.37 %
Total	32,908	100.00 %	65,018,677,853 JPY	100.00 %

Distribution by Brand New and Used

New or Used	Number of Loans	Percentage of Loans	Outstanding Discounted Principal Balance	Percentage of Balance
VW New	14,336	43.56 %	27,526,833,449 JPY	42.34 %
VW Used	4,448	13.52 %	5,420,588,131 JPY	8.34 %
VW Used (Prolonged)	2,224	6.76 %	965,119,650 JPY	1.48 %
Audi New	7,640	23.22 %	22,771,849,387 JPY	35.02 %
Audi Used	3,660	11.12 %	7,607,867,885 JPY	11.70 %
Audi Used (Prolonged)	559	1.70 %	578,248,375 JPY	0.89 %
Other	41	0.12 %	148,170,976 JPY	0.23 %
Total	32,908	100.00 %	65,018,677,853 JPY	100.00 %

Distribution by Product Type

Loan Type List

Loan Type	Description
100	Volkswagen Owner's Plan
100	Audi Owner's Plan
100	Lamborghini Auto Loan
100	Bentley Auto Loan
101	Twin Loan
105	Refinanced Volkswagen Solutions
106	Refinanced Volkswagen Das Welt Auto with refinance option *
106	Refinanced Audi S-Loan/ S-Loan Plus
106	Refinanced Lamborghini Hyper Premium Plan
106	Refinanced Bentley My Flying B
140	Volkswagen Solutions
150	Volkswagen Das Welt Auto with refinance option **
150	Audi S-Loan
150	Lamborghini Hyper Premium Plan
150	Bentley My Flying B
151	Audi S-Loan Plus

(*) The name was changed from "Refinanced Volkswagen GUC with refinance option" effective from 1 February 2012.

No other changes were made to auto loan agreements.

(**) The name was changed from "Volkswagen GUC with refinance option" effective from 1 February 2012.

No other changes were made to auto loan agreements.

Product Type

Loan Type	Number of Loans	Percentage of Loans	Outstanding Discounted Principal Balance	Percentage of Balance
100	4,765	14.48 %	6,674,652,819 JPY	10.27 %
101	1	0.00 %	36,680 JPY	0.00 %
105	2,145	6.52 %	946,279,520 JPY	1.46 %
106	638	1.94 %	597,088,505 JPY	0.92 %
140-VFJ	2,151	6.54 %	4,036,841,105 JPY	6.21 %
140-Dealer	11,015	33.47 %	21,849,319,796 JPY	33.60 %
150	11,488	34.91 %	28,791,986,884 JPY	44.28 %
151	705	2.14 %	2,122,472,544 JPY	3.26 %
Total	32,908	100.00 %	65,018,677,853 JPY	100.00 %

Credit Type

Credit Type	Number of Loans	Percentage of Loans	Outstanding Discounted Principal Balance	Percentage of Balance
Balloon Type Loan	25,359	77.06 %	56,800,620,329 JPY	87.36 %
Equal Instalment Type Loan	7,549	22.94 %	8,218,057,524 JPY	12.64 %
Total	32,908	100.00 %	65,018,677,853 JPY	100.00 %

Distribution by RV

Loan Type	Number of Loans	Percentage of Balance	Outstanding Discounted Principal Balance
100/101/105/106	7,549	12.64 %	8,218,057,524 JPY
140-VFJ (excl. balloon)		3.43 %	2,233,349,440 JPY
140-VFJ (balloon)		2.77 %	1,803,491,665 JPY
140-VFJ	2,151	6.21 %	4,036,841,105 JPY
140-Dealer (excl. balloon)		18.80 %	12,223,113,111 JPY
140-Dealer (balloon)		14.81 %	9,626,206,685 JPY
140-Dealer	11,015	33.60 %	21,849,319,796 JPY
150 (excl. balloon)		22.09 %	14,362,831,079 JPY
150 (balloon)		22.19 %	14,429,155,805 JPY
150	11,488	44.28 %	28,791,986,884 JPY
151 (excl. balloon)		1.14 %	744,409,921 JPY
151 (balloon)		2.12 %	1,378,062,623 JPY
151	705	3.26 %	2,122,472,544 JPY
Total	32,908	100.00 %	65,018,677,853 JPY

Type of Payment Portion	Percentage of Balance	Outstanding Discounted Principal Balance
Monthly Installment Portion	58.11 %	37,781,761,075 JPY
Balloon Portion	41.89 %	27,236,916,778 JPY
Total	100.00 %	65,018,677,853 JPY

Distribution by Brand New and Used
Audi

New or Used	Number of Loans	Percentage of Loans	Outstanding Discounted Principal Balance	Percentage of Balance
New	7,640	64.42 %	22,771,849,387 JPY	73.56 %
Used	4,219	35.58 %	8,186,116,260 JPY	26.44 %
Total	11,859	100.00 %	30,957,965,647 JPY	100.00 %

Bentley

New or Used	Number of Loans	Percentage of Loans	Outstanding Discounted Principal Balance	Percentage of Balance
New	9	64.29 %	63,066,207 JPY	68.72 %
Used	5	35.71 %	28,700,600 JPY	31.28 %
Total	14	100.00 %	91,766,807 JPY	100.00 %

Lamborghini

New or Used	Number of Loans	Percentage of Loans	Outstanding Discounted Principal Balance	Percentage of Balance
New	5	83.33 %	29,660,448 JPY	78.44 %
Used	1	16.67 %	8,152,703 JPY	21.56 %
Total	6	100.00 %	37,813,151 JPY	100.00 %

VW

New or Used	Number of Loans	Percentage of Loans	Outstanding Discounted Principal Balance	Percentage of Balance
New	14,336	68.24 %	27,526,833,449 JPY	81.17 %
Used	6,672	31.76 %	6,385,707,781 JPY	18.83 %
Total	21,008	100.00 %	33,912,541,230 JPY	100.00 %

OTHER

New or Used	Number of Loans	Percentage of Loans	Outstanding Discounted Principal Balance	Percentage of Balance
New	0	0.00 %	0 JPY	0.00 %
Used	21	100.00 %	18,591,018 JPY	100.00 %
Total	21	100.00 %	18,591,018 JPY	100.00 %

Distribution by Customer Type

Customer Type

Customer Type	Number of Loans	Percentage of Loans	Outstanding Discounted Principal Balance	Percentage of Balance
Retail	29,734	90.35 %	55,854,055,362 JPY	85.90 %
Corporate	3,174	9.65 %	9,164,622,491 JPY	14.10 %
Total	32,908	100.00 %	65,018,677,853 JPY	100.00 %

Distribution by Outstanding Discounted Principal Balance

Outstanding Discounted Principal Balance	Number of Loans	Percentage of Loans	Outstanding Discounted Principal Balance	Percentage of Balance
<= 500,000 JPY	2,943	8.94 %	869,365,334 JPY	1.34 %
500,001 JPY - 1,000,000 JPY	4,197	12.75 %	3,220,626,429 JPY	4.95 %
1,000,001 JPY - 1,500,000 JPY	5,842	17.75 %	7,382,820,472 JPY	11.35 %
1,500,001 JPY - 2,000,000 JPY	6,259	19.02 %	10,912,742,488 JPY	16.78 %
2,000,001 JPY - 2,500,000 JPY	4,849	14.74 %	10,861,371,021 JPY	16.71 %
2,500,001 JPY - 3,000,000 JPY	3,504	10.65 %	9,564,330,729 JPY	14.71 %
3,000,001 JPY - 3,500,000 JPY	1,927	5.86 %	6,206,951,782 JPY	9.55 %
3,500,001 JPY - 4,000,000 JPY	1,147	3.49 %	4,265,132,669 JPY	6.56 %
4,000,001 JPY - 4,500,000 JPY	710	2.16 %	3,005,920,321 JPY	4.62 %
4,500,001 JPY - 5,000,000 JPY	489	1.49 %	2,312,566,655 JPY	3.56 %
5,000,001 JPY - 6,000,000 JPY	567	1.72 %	3,067,526,355 JPY	4.72 %
6,000,001 JPY - 7,000,000 JPY	266	0.81 %	1,709,625,695 JPY	2.63 %
7,000,001 JPY - 8,000,000 JPY	129	0.39 %	961,212,803 JPY	1.48 %
8,000,001 JPY - 9,000,000 JPY	63	0.19 %	531,199,944 JPY	0.82 %
9,000,001 JPY - 10,000,000 JPY	16	0.05 %	147,285,156 JPY	0.23 %
>= 10,000,001 JPY	0	0.00 %	0 JPY	0.00 %
Total	32,908	100.00 %	65,018,677,853 JPY	100.00 %

Statistics

Minimum Outstanding Discounted Principal Balance	8,674 JPY
Maximum Outstanding Discounted Principal Balance	9,880,971 JPY
Average Outstanding Discounted Principal Balance	1,975,771 JPY

Distribution by Original Principal Amount

Original Principal Balance	Number of Loans	Percentage of Loans	Outstanding Discounted Principal Balance	Percentage of Balance
<= 500,000 JPY	549	1.67 %	122,266,352 JPY	0.19 %
500,001 JPY - 1,000,000 JPY	2,882	8.76 %	1,342,477,222 JPY	2.06 %
1,000,001 JPY - 1,500,000 JPY	3,588	10.90 %	3,239,487,229 JPY	4.98 %
1,500,001 JPY - 2,000,000 JPY	5,233	15.90 %	6,824,314,600 JPY	10.50 %
2,000,001 JPY - 2,500,000 JPY	5,315	16.15 %	8,996,142,035 JPY	13.84 %
2,500,001 JPY - 3,000,000 JPY	5,024	15.27 %	10,431,734,026 JPY	16.04 %
3,000,001 JPY - 3,500,000 JPY	3,505	10.65 %	8,627,974,747 JPY	13.27 %
3,500,001 JPY - 4,000,000 JPY	2,348	7.14 %	6,652,683,646 JPY	10.23 %
4,000,001 JPY - 4,500,000 JPY	1,302	3.96 %	4,238,719,070 JPY	6.52 %
4,500,001 JPY - 5,000,000 JPY	961	2.92 %	3,494,010,144 JPY	5.37 %
5,000,001 JPY - 6,000,000 JPY	1,022	3.11 %	4,315,954,242 JPY	6.64 %
6,000,001 JPY - 7,000,000 JPY	579	1.76 %	2,860,382,107 JPY	4.40 %
7,000,001 JPY - 8,000,000 JPY	267	0.81 %	1,586,685,718 JPY	2.44 %
8,000,001 JPY - 9,000,000 JPY	144	0.44 %	923,275,892 JPY	1.42 %
9,000,001 JPY - 10,000,000 JPY	78	0.24 %	565,385,099 JPY	0.87 %
>= 10,000,001 JPY	111	0.34 %	797,185,724 JPY	1.23 %
Total	32,908	100.00 %	65,018,677,853 JPY	100.00 %

Statistics

Minimum Original Principal Balance	140,000 JPY
Maximum Original Principal Balance	25,000,000 JPY
Average Original Principal Balance	2,668,392 JPY

Distribution by Interest Rate paid by the Obligor

Interest Rate paid by the Obligor	Number of Loans	Percentage of Loans	Outstanding Discounted Principal Balance	Percentage of Balance
< 0.900 %	2,162	6.57 %	4,318,869,301 JPY	6.64 %
0.900 % < 1.500 %	5,855	17.79 %	14,465,150,045 JPY	22.25 %
1.500 % < 2.000 %	10,782	32.76 %	24,070,340,795 JPY	37.02 %
2.000 % < 2.500 %	313	0.95 %	577,003,586 JPY	0.89 %
2.500 % < 3.000 %	6,488	19.72 %	12,404,105,767 JPY	19.08 %
3.000 % < 3.500 %	1,211	3.68 %	1,115,540,052 JPY	1.72 %
3.500 % < 4.000 %	6,057	18.41 %	7,993,706,363 JPY	12.29 %
4.000 % < 4.500 %	40	0.12 %	73,961,944 JPY	0.11 %
4.500 % < 5.000 %	0	0.00 %	0 JPY	0.00 %
5.000 % or more	0	0.00 %	0 JPY	0.00 %
Total	32,908	100.00 %	65,018,677,853 JPY	100.00 %

Statistics	
Minimum Interest Rate	0.00 %
Maximum Interest Rate	4.49 %
Weighted Average Interest Rate	2.05 %

Distribution by Original Term

Length of Original Term (months)	Number of Loans	Percentage of Loans	Outstanding Discounted Principal Balance	Percentage of Balance
6 - 12	192	0.58 %	43,485,828 JPY	0.07 %
13 - 18	196	0.60 %	54,189,955 JPY	0.08 %
19 - 24	1,983	6.03 %	1,110,797,619 JPY	1.71 %
25 - 30	115	0.35 %	72,257,416 JPY	0.11 %
31 - 36	13,710	41.66 %	29,135,470,229 JPY	44.81 %
37 - 42	82	0.25 %	78,018,166 JPY	0.12 %
43 - 48	1,644	5.00 %	2,371,009,139 JPY	3.65 %
49 - 54	31	0.09 %	44,359,873 JPY	0.07 %
55 - 60	14,068	42.75 %	30,144,730,486 JPY	46.36 %
61 - 66	20	0.06 %	33,660,099 JPY	0.05 %
67 - 72	679	2.06 %	1,373,234,578 JPY	2.11 %
73 - 84	188	0.57 %	557,464,465 JPY	0.86 %
Total	32,908	100.00 %	65,018,677,853 JPY	100.00 %

Statistics	
Minimum Original Term in months	6
Maximum Original Term in months	84
Weighted Average Original Term in months	48.53

Distribution by Remaining Term

Length of Remaining Term (months)	Number of Loans	Percentage of Loans	Outstanding Discounted Principal Balance	Percentage of Balance
<= 12	6,015	18.28 %	6,989,018,059 JPY	10.75 %
13 - 18	3,830	11.64 %	5,660,651,494 JPY	8.71 %
19 - 24	4,660	14.16 %	9,665,697,345 JPY	14.87 %
25 - 30	4,599	13.98 %	10,968,748,138 JPY	16.87 %
31 - 36	1,829	5.56 %	3,463,208,658 JPY	5.33 %
37 - 42	1,812	5.51 %	3,669,905,064 JPY	5.64 %
43 - 48	4,366	13.27 %	9,945,097,361 JPY	15.30 %
49 - 54	4,808	14.61 %	12,020,076,227 JPY	18.49 %
55 - 60	653	1.98 %	1,694,489,466 JPY	2.61 %
61 - 66	244	0.74 %	628,451,204 JPY	0.97 %
67 - 72	62	0.19 %	201,413,919 JPY	0.31 %
73 - 84	30	0.09 %	111,920,918 JPY	0.17 %
Total	32,908	100.00 %	65,018,677,853 JPY	100.00 %

Statistics	
Minimum Remaining Term in months	1
Maximum Remaining Term in months	80
Weighted Average Remaining Term in months	32.99

Distribution by Seasoning

Seasoning (months)	Number of Loans	Percentage of Loans	Outstanding Discounted Principal Balance	Percentage of Balance
<= 12	13,185	40.07 %	30,344,098,573 JPY	46.67 %
13 - 18	8,696	26.43 %	17,766,870,701 JPY	27.33 %
19 - 24	3,687	11.20 %	6,678,659,607 JPY	10.27 %
25 - 30	3,598	10.93 %	5,555,448,543 JPY	8.54 %
31 - 36	1,744	5.30 %	2,439,286,127 JPY	3.75 %
37 - 42	980	2.98 %	1,264,793,435 JPY	1.95 %
43 - 48	553	1.68 %	592,809,046 JPY	0.91 %
49 - 54	338	1.03 %	284,938,982 JPY	0.44 %
55 - 60	110	0.33 %	86,366,643 JPY	0.13 %
61 - 66	12	0.04 %	4,299,636 JPY	0.01 %
67 - 72	5	0.02 %	1,106,560 JPY	0.00 %
73 - 84	0	0.00 %	0 JPY	0.00 %
Total	32,908	100.00 %	65,018,677,853 JPY	100.00 %

Statistics	
Minimum Seasoning in months	2
Maximum Seasoning in months	71
Weighted Average Seasoning in months	15.53

Distribution by Type of Car
Type of Car

Type of Car	Number of Loans	Percentage of Loans	Outstanding Discounted Principal Balance	Percentage of Balance
New	21,990	66.82 %	50,391,409,491 JPY	77.50 %
Used	10,918	33.18 %	14,627,268,362 JPY	22.50 %
Total	32,908	100.00 %	65,018,677,853 JPY	100.00 %

Type of Car: Only Balloon Loans

Type of Car	Number of Loans	Percentage of Loans	Outstanding Discounted Principal Balance	Percentage of Balance
New	20,481	80.76 %	48,015,172,965 JPY	84.53 %
Used	4,878	19.24 %	8,785,447,364 JPY	15.47 %
Total	25,359	100.00 %	56,800,620,329 JPY	100.00 %

Type of Car: Only Equal Instalment Loans

Type of Car	Number of Loans	Percentage of Loans	Outstanding Discounted Principal Balance	Percentage of Balance
New	1,509	19.99 %	2,376,236,526 JPY	28.91 %
Used	6,040	80.01 %	5,841,820,998 JPY	71.09 %
Total	7,549	100.00 %	8,218,057,524 JPY	100.00 %

Distribution by Brand and Model

Make	Model	Number of Loans	Percentage of Loans	Outstanding Discounted Principal Balance	Percentage of Balance
Audi	A1	1,168	3.55 %	1,790,068,723 JPY	2.75 %
	A3	2,935	8.92 %	5,807,360,508 JPY	8.93 %
	A4	2,469	7.50 %	6,410,921,653 JPY	9.86 %
	A5	526	1.60 %	1,416,483,400 JPY	2.18 %
	A6	793	2.41 %	2,506,955,990 JPY	3.86 %
	A7	286	0.87 %	1,221,896,189 JPY	1.88 %
	A8	91	0.28 %	424,938,222 JPY	0.65 %
	S1	119	0.36 %	308,976,688 JPY	0.48 %
	S3	404	1.23 %	1,208,738,308 JPY	1.86 %
	S4	88	0.27 %	270,350,882 JPY	0.42 %
	S5	65	0.20 %	239,720,912 JPY	0.37 %
	S6	35	0.11 %	171,917,298 JPY	0.26 %
	S7	29	0.09 %	144,124,602 JPY	0.22 %
	S8	24	0.07 %	148,391,303 JPY	0.23 %
	RS3	55	0.17 %	257,495,626 JPY	0.40 %
	RS4	19	0.06 %	82,892,232 JPY	0.13 %
	RS5	15	0.05 %	72,935,466 JPY	0.11 %
	RS6	16	0.05 %	73,633,810 JPY	0.11 %
	RS7	11	0.03 %	75,376,538 JPY	0.12 %
	Q3	1,020	3.10 %	2,507,555,679 JPY	3.86 %
	Q5	664	2.02 %	2,157,168,855 JPY	3.32 %
	Q7	181	0.55 %	982,331,668 JPY	1.51 %
	RSQ3	23	0.07 %	118,457,509 JPY	0.18 %
	TT	812	2.47 %	2,498,430,655 JPY	3.84 %
	R8	11	0.03 %	60,842,931 JPY	0.09 %
AUDI OTHERS	0	0.00 %	0 JPY	0.00 %	
	Subtotal	11,859	36.04 %	30,957,965,647 JPY	47.61 %
Bentley	ARNAGE	0	0.00 %	0 JPY	0.00 %
	AZURE	0	0.00 %	0 JPY	0.00 %
	BENTAYGA	1	0.00 %	9,045,866 JPY	0.01 %
	CONTINENTAL	11	0.03 %	67,191,859 JPY	0.10 %
	FLYING SPUR	1	0.00 %	6,918,435 JPY	0.01 %
	MULSANNE	1	0.00 %	8,610,647 JPY	0.01 %
	BENTLEY OTHERS	0	0.00 %	0 JPY	0.00 %
		Subtotal	14	0.04 %	91,766,807 JPY
Lamborghini	AVENTADOR	1	0.00 %	2,436,755 JPY	0.00 %
	DIABLO	0	0.00 %	0 JPY	0.00 %
	GALLARDO	3	0.01 %	24,611,634 JPY	0.04 %
	HURACÁN	2	0.01 %	10,764,762 JPY	0.02 %
	MULCIELAGO	0	0.00 %	0 JPY	0.00 %
	LAMBORGHINI OTHERS	0	0.00 %	0 JPY	0.00 %
		Subtotal	6	0.02 %	37,813,151 JPY
VW	BEETLE	2,147	6.52 %	3,383,716,099 JPY	5.20 %
	BORA	0	0.00 %	0 JPY	0.00 %
	EOS	0	0.00 %	0 JPY	0.00 %
	GOLF	8,308	25.25 %	14,080,827,485 JPY	21.66 %
	JETTA	17	0.05 %	7,103,065 JPY	0.01 %
	LUPO	0	0.00 %	0 JPY	0.00 %
	PASSAT	1,720	5.23 %	3,695,790,607 JPY	5.68 %
	POLO	4,447	13.51 %	5,763,978,925 JPY	8.87 %
	SCIROCCO	54	0.16 %	62,531,042 JPY	0.10 %
	SHARAN	729	2.22 %	1,536,288,058 JPY	2.36 %
	TIGUAN	560	1.70 %	993,302,394 JPY	1.53 %
	TOUAREG	100	0.30 %	274,476,365 JPY	0.42 %
	TOURAN	1,444	4.39 %	2,821,586,549 JPY	4.34 %
	UP	1,482	4.50 %	1,292,940,641 JPY	1.99 %
	VENTO	0	0.00 %	0 JPY	0.00 %
VW OTHERS	0	0.00 %	0 JPY	0.00 %	
	Subtotal	21,008	63.84 %	33,912,541,230 JPY	52.16 %
Non VW Group Vehicles		21	0.06 %	18,591,018 JPY	0.03 %
	Subtotal	21	0.06 %	18,591,018 JPY	0.03 %
Total		32,908	100.00 %	65,018,677,853 JPY	100.00 %

Geographic Distribution by Prefecture

Prefecture	Number of Loans	Percentage of Loans	Outstanding Discounted Principal Balance	Percentage of Balance
Tokyo	5,046	15.33 %	11,454,508,370 JPY	17.62 %
Kanagawa	3,252	9.88 %	6,533,456,840 JPY	10.05 %
Aichi	2,357	7.16 %	4,517,528,242 JPY	6.95 %
Saitama	2,167	6.59 %	4,326,181,484 JPY	6.65 %
Osaka	1,925	5.85 %	4,077,380,601 JPY	6.27 %
Fukuoka	1,396	4.24 %	2,705,137,656 JPY	4.16 %
Chiba	1,430	4.35 %	2,704,423,063 JPY	4.16 %
Hokkaido	1,226	3.73 %	2,658,621,217 JPY	4.09 %
Hyogo	1,301	3.95 %	2,592,319,224 JPY	3.99 %
Ibaraki	1,018	3.09 %	1,906,242,722 JPY	2.93 %
Shizuoka	975	2.96 %	1,898,044,810 JPY	2.92 %
Hiroshima	784	2.38 %	1,417,950,340 JPY	2.18 %
Tochigi	681	2.07 %	1,322,841,576 JPY	2.03 %
Kyoto	621	1.89 %	1,200,347,922 JPY	1.85 %
Gunma	637	1.94 %	1,076,361,659 JPY	1.66 %
Miyagi	560	1.70 %	1,055,942,485 JPY	1.62 %
Okayama	513	1.56 %	934,823,510 JPY	1.44 %
Gifu	498	1.51 %	889,410,533 JPY	1.37 %
Nagano	489	1.49 %	842,857,111 JPY	1.30 %
Mie	433	1.32 %	759,742,282 JPY	1.17 %
Niigata	394	1.20 %	670,802,703 JPY	1.03 %
Fukushima	364	1.11 %	618,545,363 JPY	0.95 %
Yamaguchi	319	0.97 %	577,295,665 JPY	0.89 %
Nara	298	0.91 %	571,585,910 JPY	0.88 %
Oita	300	0.91 %	559,591,183 JPY	0.86 %
Ishikawa	288	0.88 %	503,557,335 JPY	0.77 %
Shiga	271	0.82 %	481,869,477 JPY	0.74 %
Kumamoto	278	0.84 %	474,866,886 JPY	0.73 %
Kagoshima	247	0.75 %	446,712,293 JPY	0.69 %
Yamanashi	230	0.70 %	445,072,098 JPY	0.68 %
Toyama	240	0.73 %	411,978,826 JPY	0.63 %
Yamagata	242	0.74 %	401,840,373 JPY	0.62 %
Fukui	205	0.62 %	400,771,009 JPY	0.62 %
Wakayama	198	0.60 %	389,554,939 JPY	0.60 %
Kagawa	216	0.66 %	383,554,470 JPY	0.59 %
Nagasaki	161	0.49 %	320,506,250 JPY	0.49 %
Iwate	160	0.49 %	312,952,995 JPY	0.48 %
Tokushima	158	0.48 %	297,249,518 JPY	0.46 %
Miyazaki	144	0.44 %	267,918,183 JPY	0.41 %
Saga	132	0.40 %	262,923,699 JPY	0.40 %
Aomori	135	0.41 %	245,184,701 JPY	0.38 %
Ehime	151	0.46 %	242,679,415 JPY	0.37 %
Shimane	110	0.33 %	228,302,588 JPY	0.35 %
Tottori	123	0.37 %	201,248,722 JPY	0.31 %
Akita	106	0.32 %	199,967,686 JPY	0.31 %
Kouchi	77	0.23 %	141,192,154 JPY	0.22 %
Okinawa	52	0.16 %	86,831,765 JPY	0.13 %
Total	32,908	100.00 %	65,018,677,853 JPY	100.00 %

Distribution by Obligor Concentration

Distribution of Loan Contracts and Vehicles per Obligor

Contract Concentration	Number of Customers	Percentage of Customers	Number of Loans	Percentage of Loans	Outstanding Discounted Principal Balance	Percentage of Balance
1	31,728	96.97 %	31,728	96.41 %	62,228,361,709 JPY	95.71 %
2	927	2.83 %	1,088	3.31 %	2,548,800,398 JPY	3.92 %
3	55	0.17 %	75	0.23 %	201,311,966 JPY	0.31 %
4	8	0.02 %	12	0.04 %	28,061,279 JPY	0.04 %
5	2	0.01 %	4	0.01 %	9,452,905 JPY	0.01 %
6 - 10	1	0.00 %	1	0.00 %	2,689,596 JPY	0.00 %
11 or more	0	0.00 %	0	0.00 %	0 JPY	0.00 %
Total	32,721	100.00 %	32,908	100.00 %	65,018,677,853 JPY	100.00 %

Top 20 Obligor

Number	Number of Contracts	Outstanding Discounted Principal Balance	Percentage of Balance
1	2	15,097,542 JPY	0.02 %
2	2	13,837,553 JPY	0.02 %
3	2	11,986,106 JPY	0.02 %
4	2	11,502,931 JPY	0.02 %
5	2	11,206,311 JPY	0.02 %
6	2	11,116,864 JPY	0.02 %
7	2	11,041,495 JPY	0.02 %
8	2	10,560,801 JPY	0.02 %
9	2	10,038,995 JPY	0.02 %
10	2	9,942,873 JPY	0.02 %
11	1	9,880,971 JPY	0.02 %
12	2	9,877,567 JPY	0.02 %
13	2	9,834,990 JPY	0.02 %
14	2	9,712,634 JPY	0.01 %
15	1	9,652,372 JPY	0.01 %
16	2	9,632,019 JPY	0.01 %
17	1	9,364,811 JPY	0.01 %
18	2	9,294,364 JPY	0.01 %
19	1	9,215,087 JPY	0.01 %
20	1	9,165,666 JPY	0.01 %
Total 1 -20	35	211,961,952 JPY	0.33 %

Remarks:

Figures above are calculated based on each of the Sub-Servicers respectively and not across both of the Sub-Servicers.

Distribution by Contract Start Month

Origination Month	Number of Loans	Percentage of Loans	Outstanding Discounted Principal Balance	Percentage of Balance
07.2011	1	0.00 %	174,726 JPY	0.00 %
08.2011	1	0.00 %	38,657 JPY	0.00 %
09.2011	1	0.00 %	134,936 JPY	0.00 %
10.2011	1	0.00 %	399,930 JPY	0.00 %
11.2011	1	0.00 %	358,311 JPY	0.00 %
12.2011	1	0.00 %	188,986 JPY	0.00 %
01.2012	3	0.01 %	900,877 JPY	0.00 %
02.2012	2	0.01 %	922,687 JPY	0.00 %
03.2012	1	0.00 %	315,608 JPY	0.00 %
04.2012	3	0.01 %	1,136,597 JPY	0.00 %
05.2012	2	0.01 %	834,881 JPY	0.00 %
06.2012	0	0.00 %	0 JPY	0.00 %
07.2012	18	0.05 %	5,825,318 JPY	0.01 %
08.2012	9	0.03 %	10,866,473 JPY	0.02 %
09.2012	38	0.12 %	37,167,393 JPY	0.06 %
10.2012	16	0.05 %	6,447,183 JPY	0.01 %
11.2012	29	0.09 %	26,060,276 JPY	0.04 %
12.2012	41	0.12 %	29,382,441 JPY	0.05 %
01.2013	38	0.12 %	33,842,208 JPY	0.05 %
02.2013	47	0.14 %	30,910,531 JPY	0.05 %
03.2013	74	0.22 %	60,855,082 JPY	0.09 %
04.2013	60	0.18 %	60,833,322 JPY	0.09 %
05.2013	78	0.24 %	69,115,398 JPY	0.11 %
06.2013	104	0.32 %	103,574,831 JPY	0.16 %
07.2013	80	0.24 %	66,797,665 JPY	0.10 %
08.2013	62	0.19 %	67,705,913 JPY	0.10 %
09.2013	117	0.36 %	114,687,678 JPY	0.18 %
10.2013	87	0.26 %	106,004,752 JPY	0.16 %
11.2013	103	0.31 %	134,038,207 JPY	0.21 %
12.2013	164	0.50 %	214,657,434 JPY	0.33 %
01.2014	118	0.36 %	152,471,710 JPY	0.23 %
02.2014	194	0.59 %	268,924,314 JPY	0.41 %
03.2014	299	0.91 %	376,076,456 JPY	0.58 %
04.2014	88	0.27 %	107,940,466 JPY	0.17 %
05.2014	117	0.36 %	144,723,055 JPY	0.22 %
06.2014	166	0.50 %	221,431,123 JPY	0.34 %
07.2014	247	0.75 %	332,130,812 JPY	0.51 %
08.2014	225	0.68 %	298,548,181 JPY	0.46 %
09.2014	466	1.42 %	683,183,929 JPY	1.05 %
10.2014	283	0.86 %	396,919,785 JPY	0.61 %
11.2014	357	1.08 %	507,072,297 JPY	0.78 %
12.2014	558	1.70 %	879,075,595 JPY	1.35 %
01.2015	411	1.25 %	579,950,658 JPY	0.89 %
02.2015	628	1.91 %	921,565,385 JPY	1.42 %
03.2015	1,108	3.37 %	1,728,810,478 JPY	2.66 %
04.2015	327	0.99 %	521,973,074 JPY	0.80 %
05.2015	566	1.72 %	924,073,353 JPY	1.42 %
06.2015	685	2.08 %	1,252,207,206 JPY	1.93 %
07.2015	554	1.68 %	915,090,895 JPY	1.41 %
08.2015	584	1.77 %	982,632,849 JPY	1.51 %
09.2015	841	2.56 %	1,594,324,482 JPY	2.45 %
10.2015	474	1.44 %	877,071,173 JPY	1.35 %
11.2015	549	1.67 %	1,057,333,002 JPY	1.63 %
12.2015	1,161	3.53 %	2,221,843,205 JPY	3.42 %
01.2016	1,037	3.15 %	2,069,034,603 JPY	3.18 %
02.2016	1,527	4.64 %	3,022,054,602 JPY	4.65 %
03.2016	2,334	7.09 %	4,735,903,152 JPY	7.28 %
04.2016	1,135	3.45 %	2,481,843,375 JPY	3.82 %
05.2016	1,502	4.56 %	3,236,191,764 JPY	4.98 %
06.2016	1,846	5.61 %	4,079,376,457 JPY	6.27 %
07.2016	1,619	4.92 %	3,517,351,480 JPY	5.41 %
08.2016	1,824	5.54 %	4,135,625,956 JPY	6.36 %
09.2016	2,534	7.70 %	5,811,304,289 JPY	8.94 %
10.2016	1,638	4.98 %	3,781,207,163 JPY	5.82 %
11.2016	2,183	6.63 %	5,257,156,130 JPY	8.09 %
12.2016	459	1.39 %	1,074,462,946 JPY	1.65 %
01.2017	330	1.00 %	830,580,521 JPY	1.28 %
02.2017	303	0.92 %	724,065,119 JPY	1.11 %
03.2017	370	1.12 %	930,894,852 JPY	1.43 %
04.2017	79	0.24 %	202,073,660 JPY	0.31 %
05.2017	0	0.00 %	0 JPY	0.00 %
06.2017	0	0.00 %	0 JPY	0.00 %
Total	32,908	100.00 %	65,018,677,853 JPY	100.00 %

Distribution by Contract End Month

Maturity Month	Number of Loans	Percentage of Loans	Outstanding Discounted Principal Balance	Percentage of Balance
07.2017	209	0.64 %	173,599,477 JPY	0.27 %
08.2017	239	0.73 %	187,147,577 JPY	0.29 %
09.2017	446	1.36 %	477,173,158 JPY	0.73 %
10.2017	267	0.81 %	244,943,236 JPY	0.38 %
11.2017	338	1.03 %	346,869,572 JPY	0.53 %
12.2017	521	1.58 %	621,415,725 JPY	0.96 %
01.2018	426	1.29 %	441,358,680 JPY	0.68 %
02.2018	640	1.94 %	711,096,123 JPY	1.09 %
03.2018	1,162	3.53 %	1,477,091,289 JPY	2.27 %
04.2018	384	1.17 %	457,057,239 JPY	0.70 %
05.2018	580	1.76 %	734,305,593 JPY	1.13 %
06.2018	803	2.44 %	1,116,960,390 JPY	1.72 %
07.2018	591	1.80 %	743,613,868 JPY	1.14 %
08.2018	519	1.58 %	740,108,620 JPY	1.14 %
09.2018	834	2.53 %	1,232,275,323 JPY	1.90 %
10.2018	463	1.41 %	648,505,811 JPY	1.00 %
11.2018	592	1.80 %	838,552,453 JPY	1.29 %
12.2018	831	2.53 %	1,457,595,419 JPY	2.24 %
01.2019	523	1.59 %	983,897,683 JPY	1.51 %
02.2019	743	2.26 %	1,379,987,852 JPY	2.12 %
03.2019	1,224	3.72 %	2,432,996,884 JPY	3.74 %
04.2019	545	1.66 %	1,225,142,426 JPY	1.88 %
05.2019	712	2.16 %	1,548,531,272 JPY	2.38 %
06.2019	913	2.77 %	2,095,141,228 JPY	3.22 %
07.2019	672	2.04 %	1,559,522,390 JPY	2.40 %
08.2019	724	2.20 %	1,686,310,302 JPY	2.59 %
09.2019	1,112	3.38 %	2,696,664,003 JPY	4.15 %
10.2019	725	2.20 %	1,718,978,712 JPY	2.64 %
11.2019	955	2.90 %	2,448,875,251 JPY	3.77 %
12.2019	411	1.25 %	858,397,480 JPY	1.32 %
01.2020	300	0.91 %	591,400,748 JPY	0.91 %
02.2020	382	1.16 %	722,872,241 JPY	1.11 %
03.2020	492	1.50 %	958,166,282 JPY	1.47 %
04.2020	163	0.50 %	322,514,617 JPY	0.50 %
05.2020	243	0.74 %	407,704,519 JPY	0.63 %
06.2020	249	0.76 %	460,550,251 JPY	0.71 %
07.2020	218	0.66 %	423,434,424 JPY	0.65 %
08.2020	271	0.82 %	517,382,278 JPY	0.80 %
09.2020	355	1.08 %	699,491,115 JPY	1.08 %
10.2020	251	0.76 %	510,819,189 JPY	0.79 %
11.2020	304	0.92 %	626,305,215 JPY	0.96 %
12.2020	413	1.26 %	892,472,843 JPY	1.37 %
01.2021	521	1.58 %	1,143,677,227 JPY	1.76 %
02.2021	770	2.34 %	1,746,687,317 JPY	2.69 %
03.2021	1,092	3.32 %	2,423,993,924 JPY	3.73 %
04.2021	524	1.59 %	1,227,223,546 JPY	1.89 %
05.2021	699	2.12 %	1,572,882,616 JPY	2.42 %
06.2021	760	2.31 %	1,830,632,731 JPY	2.82 %
07.2021	784	2.38 %	1,825,372,403 JPY	2.81 %
08.2021	870	2.64 %	2,111,861,316 JPY	3.25 %
09.2021	1,190	3.62 %	2,962,875,554 JPY	4.56 %
10.2021	765	2.32 %	1,956,923,392 JPY	3.01 %
11.2021	993	3.02 %	2,627,609,293 JPY	4.04 %
12.2021	206	0.63 %	535,434,269 JPY	0.82 %
01.2022	172	0.52 %	485,343,101 JPY	0.75 %
02.2022	151	0.46 %	368,726,729 JPY	0.57 %
03.2022	199	0.60 %	523,203,574 JPY	0.80 %
04.2022	60	0.18 %	134,027,064 JPY	0.21 %
05.2022	30	0.09 %	74,952,763 JPY	0.12 %
06.2022	41	0.12 %	108,236,235 JPY	0.17 %
07.2022	41	0.12 %	94,765,904 JPY	0.15 %
08.2022	80	0.24 %	218,780,734 JPY	0.34 %
09.2022	48	0.15 %	121,059,596 JPY	0.19 %
10.2022	27	0.08 %	61,726,815 JPY	0.09 %
11.2022	29	0.09 %	72,914,066 JPY	0.11 %
12.2022	19	0.06 %	59,204,089 JPY	0.09 %
01.2023	10	0.03 %	30,247,953 JPY	0.05 %
02.2023	15	0.05 %	50,052,249 JPY	0.08 %
03.2023	9	0.03 %	21,556,388 JPY	0.03 %
04.2023	5	0.02 %	15,027,639 JPY	0.02 %
05.2023	12	0.04 %	45,134,470 JPY	0.07 %
06.2023	11	0.03 %	39,395,220 JPY	0.06 %
07.2023	2	0.01 %	5,944,856 JPY	0.01 %
08.2023	6	0.02 %	20,017,834 JPY	0.03 %
09.2023	12	0.04 %	45,512,875 JPY	0.07 %
10.2023	5	0.02 %	19,932,309 JPY	0.03 %
11.2023	3	0.01 %	11,826,771 JPY	0.02 %
12.2023	0	0.00 %	0 JPY	0.00 %
01.2024	1	0.00 %	4,793,466 JPY	0.01 %
02.2024	1	0.00 %	3,892,807 JPY	0.01 %
Total	32,908	100.00 %	65,018,677,853 JPY	100.00 %

Distribution by Monthly Payment

Monthly Payment	Number of Loans	Percentage of Loans	Outstanding Discounted Principal Balance	Percentage of Balance
<= 10,000 JPY	1,662	5.05 %	1,995,160,682 JPY	3.07 %
10,001 JPY - 20,000 JPY	6,154	18.70 %	8,313,210,728 JPY	12.79 %
20,001 JPY - 30,000 JPY	8,826	26.82 %	13,828,966,617 JPY	21.27 %
30,001 JPY - 40,000 JPY	6,521	19.82 %	12,659,863,237 JPY	19.47 %
40,001 JPY - 50,000 JPY	3,784	11.50 %	8,554,021,434 JPY	13.16 %
50,001 JPY - 60,000 JPY	2,168	6.59 %	5,631,045,766 JPY	8.66 %
60,001 JPY - 70,000 JPY	1,149	3.49 %	3,400,866,344 JPY	5.23 %
70,001 JPY - 80,000 JPY	659	2.00 %	2,143,739,398 JPY	3.30 %
80,001 JPY - 90,000 JPY	526	1.60 %	1,837,470,323 JPY	2.83 %
90,001 JPY - 100,000 JPY	396	1.20 %	1,524,627,563 JPY	2.34 %
100,001 JPY - 110,000 JPY	261	0.79 %	1,053,504,452 JPY	1.62 %
110,001 JPY - 120,000 JPY	195	0.59 %	887,331,492 JPY	1.36 %
120,001 JPY - 130,000 JPY	159	0.48 %	749,548,361 JPY	1.15 %
130,001 JPY - 140,000 JPY	105	0.32 %	541,042,486 JPY	0.83 %
140,001 JPY - 150,000 JPY	70	0.21 %	369,400,849 JPY	0.57 %
>= 150,001 JPY	273	0.83 %	1,528,878,121 JPY	2.35 %
Total	32,908	100.00 %	65,018,677,853 JPY	100.00 %

Distribution by Bonus Payment

Bonus Payment	Number of Loans	Percentage of Loans	Outstanding Discounted Principal Balance	Percentage of Balance
No Bonus Payment	19,851	60.32 %	38,455,532,138 JPY	59.15 %
1 JPY - 25,000 JPY	309	0.94 %	451,170,132 JPY	0.69 %
25,001 JPY - 50,000 JPY	3,241	9.85 %	5,240,049,449 JPY	8.06 %
50,001 JPY - 75,000 JPY	1,123	3.41 %	1,956,296,380 JPY	3.01 %
75,001 JPY - 100,000 JPY	4,524	13.75 %	8,865,742,061 JPY	13.64 %
100,001 JPY - 125,000 JPY	572	1.74 %	1,215,846,363 JPY	1.87 %
125,001 JPY - 150,000 JPY	1,735	5.27 %	4,208,016,281 JPY	6.47 %
150,001 JPY - 175,000 JPY	188	0.57 %	487,145,630 JPY	0.75 %
175,001 JPY - 200,000 JPY	839	2.55 %	2,329,204,417 JPY	3.58 %
200,001 JPY - 225,000 JPY	53	0.16 %	155,053,357 JPY	0.24 %
225,001 JPY - 250,000 JPY	197	0.60 %	630,092,298 JPY	0.97 %
250,001 JPY - 275,000 JPY	21	0.06 %	67,954,658 JPY	0.10 %
275,001 JPY - 300,000 JPY	162	0.49 %	552,541,814 JPY	0.85 %
300,001 JPY - 325,000 JPY	7	0.02 %	30,235,092 JPY	0.05 %
325,001 JPY - 350,000 JPY	35	0.11 %	138,617,552 JPY	0.21 %
350,001 JPY - 375,000 JPY	5	0.02 %	22,203,153 JPY	0.03 %
375,001 JPY - 400,000 JPY	16	0.05 %	71,403,142 JPY	0.11 %
400,001 JPY - 425,000 JPY	0	0.00 %	0 JPY	0.00 %
425,001 JPY - 450,000 JPY	7	0.02 %	33,340,448 JPY	0.05 %
450,001 JPY - 475,000 JPY	0	0.00 %	0 JPY	0.00 %
475,001 JPY - 500,000 JPY	16	0.05 %	67,378,613 JPY	0.10 %
500,001 JPY or more	7	0.02 %	40,854,875 JPY	0.06 %
Total	32,908	100.00 %	65,018,677,853 JPY	100.00 %

Distribution by Motor Type

Motor Type	Number of Loans	Percentage of Loans	Outstanding Discounted Principal Balance	Percentage of Balance
EA 189	0	0.00 %	0 JPY	0.00 %
Other	32,908	100.00 %	65,018,677,853 JPY	100.00 %
Total	32,908	100.00 %	65,018,677,853 JPY	100.00 %

Disclaimer

This presentation contains forward-looking statements and information on the business development of the Volkswagen Group. These statements may be spoken or written and can be recognized by terms such as "expects", "anticipates", "intends", "plans", "believes", "seeks", "estimates", "will", or words with similar meaning. These statements are based on assumptions relating to the development of the economies of individual countries, and in particular of the automotive industry, which we have made on the basis of the information available to us and which we consider to be realistic at the time of going to press. The estimates given involve a degree of risk, and the actual developments may differ from those forecast.

Consequently, any unexpected fall in demand or economic stagnation in our key sales markets, such as in Western Europe (and especially Germany) or in the USA, Brazil or China, will have a corresponding impact on the development of our business. The same applies in the event of a significant shift in current exchange rates relative to the US dollar, sterling, yen, Brazilian real, Chinese renminbi and Czech koruna.

If any of these or other risks occur, or if the assumptions underlying any of these statements prove incorrect, the actual results may significantly differ from those expressed or implied by such statements.

We do not update forward-looking statements retrospectively. Such statements are valid on the date of publication and can be superceded.

This information does not constitute an offer to exchange or sell or an offer to exchange or buy any securities.