

Deal Name: Driver Japan six

Originator: Volkswagen Financial Services Japan Ltd.
Gotenyama Trust Tower 17F
7-35 Kitashinagawa 4-chome, Shinagawa-ku
Tokyo 140-0001, Japan

Reporting Entity: Volkswagen Financial Services Japan Ltd.
Treasury Dept.
Gotenyama Trust Tower 17F
7-35 Kitashinagawa 4-chome, Shinagawa-ku
Tokyo 140-0001, Japan
Tel No.: +81(0)3-5792-7261
Fax No.: +81(0)3-3280-7365
E-mail: vwfsjp.abs@vwfs.com

**Trustor of the First Trust:
Servicer:** Volkswagen Financial Services Japan Ltd.

**Trustee of the First Trust:
Trustee of the Second Trust:** Deutsche Trust Company Limited Japan
Sanno Park Tower, 11-1,
Nagatacho 2-chome, Chiyoda-ku,
Tokyo, 100-6172, Japan
Trust Business Administration Department
Tel No.: +81(0)3-5156-5637
Fax No.: +81(0)3-5156-5658
E-mail: DB_Trust_Trust@list.db.com



Contents

Page	Tables of Contents
1	Front Page
2	Contents
3	Deal Overview
4	Deal Overview: Counterparties I
5	Deal Overview: Counterparties II
6	Information regarding the TBI and ABL to the Second Trust
7	Pool Information
8	Available Distribution
9	Waterfall
10	Credit Enhancement
11	Cumulative Gross Loss Ratio & Performance Trigger
12	Cumulative Gross Loss Ratio & Performance Trigger (Chart)
13	Default & Delinquencies
14	Run Out Schedule (Previous)
15	Run Out Schedule
16	Expected Amortization to the Second Trust
17	Sub-Servicer
18	Brand
19	New and Used
20	Product Type
21	RV
22	Brand New and Used
23	Customer Type
24	Outstanding Discounted Principal Balance
25	Original Principal Amount
26	Interest Rate paid by the Obligor
27	Original Term
28	Remaining Term
29	Seasoning
30	Type of Car
31	Brand and Model
32	Geographic Dist. by Prefecture
33	Obligor Concentration
34	Contract Start Month
35	Contract End Month
36	Monthly payment
37	Bonus payment
38	Mortor Type

Deal Overview

Cut Off Date:	2017/02/10		
Trust Commencement Date:	2017/02/23	Legal Maturity of the First Trust:	2025/06/27
Monthly Period:	2017/03/11	to	2017/04/10
Reporting Date:	2017/04/17		
Reporting Frequency:	monthly		
Period No.:	2		
Remittance Date:	2017/04/24		
Advance Payment Date:	2017/04/24		
Cash Adjustment Date:	2017/04/24		
Additional Entrustment Date:	2017/04/26		
Trust Calculation Date:	2017/04/26		
Trust Calculation Period:	2017/03/25	to	2017/04/26
First Trust Payment Date:	2017/04/27		
Second Trust Payment Date:	2017/04/28		
Interest Calculation Period:	2017/03/29	to	2017/04/28
Next Reporting Date:	2017/05/17		

Pool information at the Initial Cut off Date

	Number of Contracts	Outstanding Discounted Principal Balance	Outstanding Nominal Balance
Outstanding Pool	30,757	64,171,706,472 JPY	67,028,993,300 JPY

Credit Type	Percentage of Loans	Outstanding Discounted Principal Balance	Percentage of Balance
Balloon	76.13 %	55,443,642,000 JPY	86.40 %
Equal Instalment Loan	23.87 %	8,728,064,472 JPY	13.60 %
Total	100.00 %	64,171,706,472 JPY	100.00 %

Type of Car	Percentage of Loans	Outstanding Discounted Principal Balance	Percentage of Balance
New	66.66 %	49,506,381,305 JPY	77.15 %
Used	33.34 %	14,665,325,167 JPY	22.85 %
Total	100.00 %	64,171,706,472 JPY	100.00 %

Deal Overview: Counterparties I

Joint Lead Managers:

Shinsei Securities Co., Ltd.
 Nihonbashi Muromachi Nomura Building, 4-3,
 Nihonbashi-muromachi 2-chome,
 Chuo-ku,
 Tokyo 103-0022, Japan

BNP Paribas Securities (Japan) Limited
 GranTokyo North Tower, 9-1,
 Marunouchi 1-chome,
 Chiyoda-ku,
 Tokyo 100-6740, Japan

Trust Management Account Bank:

The Bank of Tokyo-Mitsubishi UFJ, Ltd.
 4-2 Toranomom 1-chome,
 Minato-ku
 Tokyo 105-0001, Japan

Rating								
Moody's			Fitch			R&I		
Long Term	Short Term	Outlook	Long Term	Short Term	Outlook	Long Term	Short Term	Outlook
n.a.	n.a.	n.a.	n.a.	n.a.	n.a.	n.a.	n.a.	n.a.
n.a.	n.a.	n.a.	n.a.	n.a.	n.a.	n.a.	n.a.	n.a.
A1	P-1	Stable	A	F1	Negative	AA-	a-1+	Stable

Originator:

Trustor of the First Trust:

Servicer:

Volkswagen Financial Services Japan Ltd.
 Gotenyama Trust Tower 17F
 7-35 Kitashinagawa 4-chome, Shinagawa-ku
 Tokyo 140-0001, Japan

Trustee of the First Trust:

Trustee of the Second Trust:

Deutsche Trust Company Limited Japan
 Attn.: Driver Japan Six
 Trust Business Administration Department

ABL Lender to the First Trust:

Trustor of the Second Trust:

Shinsei Securities Co., Ltd.

Seller of the Trust Beneficial

Interest of the Second Trust

Shinsei Securities Co., Ltd.
 BNP Paribas Securities (Japan) Limited

Deal Overview: Counterparties II

Rating Agencies:

Moody's SF Japan K.K.

Attn.: Driver Japan six
 Structure Finance Group Monitoring Division
 5-1 Atago 2-chome, Minato-ku
 Tokyo 105-6220, Japan
 E-mail: monitor.msfi@moodys.com

Fitch Ratings Japan Limited

Attn.: Driver Japan six
 Structured Finance
 Kojimachi Crystal City East Wing 3rd Floor,
 4-8 Kōjimachi, Chiyoda-ku,
 Tokyo 102-0083, Japan
 E-mail: tokyo.surveillance@fitchratings.com

Rating and Investment Information, Inc.

Attn.: Monitoring Group Department:
 Structured Finance Department
 TERRACE SQUARE, 3-22,
 Kanda Nishikicho, Chiyoda-ku,
 Tokyo 101-0054, Japan
 E-mail: sfmonitor@r-i.co.jp

Rating of VW

Volkswagen Financial Services AG

Volkswagen AG

Rating								
Moody's			Fitch			R&I		
Short Term	Long Term	Outlook	Short Term	Long Term	Outlook	Short Term	Long Term	Outlook
P-1	A2	Negative	n.a.	n.a.	n.a.	n.a.	n.a.	n.a.
P-2	A3	Negative	F2	BBB+	Negative	n.a.	n.a.	n.a.

Information regarding Trust Beneficial Interest of the Second Trust & Asset Backed Loan to the Second Trust

Rating Details

Rating at Issue Date

	<u>TBI</u>	<u>ABL</u>
Moody's	Aaa(sf)	Aaa(sf)
Fitch	AAAsf	AAAsf
R&I	AAA	AAA

Current Rating

	<u>TBI</u>	<u>ABL</u>
Moody's	Aaa(sf)	Aaa(sf)
Fitch	AAAsf	AAAsf
R&I	AAA	AAA

Information on TBI & ABL

	<u>TBI</u>	<u>ABL</u>
Initial Balance	39,200,000,000 JPY	20,800,000,000 JPY
Expected Maturity Date	2021/04/28	2021/04/28
Legal Maturity of the Second Trust	2025/06/30	2025/06/30
Payment Dates	28th	28th
Business Day Convention	Modified Following	Modified Following
Listing	None	—

Information on Interest

	<u>TBI</u>	<u>ABL</u>
Fixed/ Floating	Fixed	Fixed
Current Coupon	0.19%	0.19%
Day Count Convention	30/360	30/360

Selling Restriction

The holders of the Beneficial Interest and the ABL Lenders* are prohibited from dividing, assigning, pledging or creating any other security interest over any of the Beneficial Interest and the Asset Backed Loans without the prior written approval of the Trustee of the Second Trust.

(*)The holders of the Beneficial Interest and the ABL Lenders are limited to specified investors (*tokutei toushika*) as defined under Paragraph 31 of Article 2 of the Financial Instruments and Exchange Act (Law no.25 of 1948 as amended).

Clean-Up Call

VWFS Japan as the Trustor of the First Trust has a right at its option to exercise a clean-up call to repurchase of all, but not part, of the outstanding Auto Loan Receivables from the Trustee of the First Trust on any Trust Calculation Date, the Discounted Principal Balance of all outstanding Auto Loan Receivables is expected to be less than ten percent (10%) of the Discounted Principal Balance of the Initial Auto Loan Receivables as of the Initial Cut-off Date after the distribution pursuant to Article 18.1 of the First Trust Agreement on the immediately following First Trust Payment Date.

Pool Information
Pool Balance on Initial Cut-Off Date

Status	Number of Contracts	Outstanding Discounted Principal Balance
Normal	30,757	64,171,706,472 JPY
Cancellation	0	0 JPY
Early Termination	0	0 JPY
Defaulted Receivables	0	0 JPY
Matured	0	0 JPY
Refinance Option	0	0 JPY
Repurchase	0	0 JPY
Total	30,757	64,171,706,472 JPY

Pool Balance before entrustment of Additional Auto Loan Receivables

Status	Number of Contracts on previous EoP	Outstanding Discounted Principal Balance on previous EoP	Number of Contracts "as Collections" during the relevant Monthly Period*	Outstanding Discounted Principal Balance "as Collections" during the relevant Monthly Period*	Number of Contracts EoP before entrustment of Additional Auto Loan Receivables	Outstanding Discounted Principal Balance EoP before entrustment of Additional Auto Loan Receivables
Normal	31,225	64,299,952,999 JPY	30,746	1,023,372,297 JPY	30,746	62,694,408,085 JPY
Cancellation	0	0 JPY	0	0 JPY	0	0 JPY
Early Termination	0	0 JPY	216	391,010,039 JPY	0	0 JPY
Defaulted Receivables	0	0 JPY	0	0 JPY	0	0 JPY
Matured	0	0 JPY	223	132,926,133 JPY	0	0 JPY
Refinance Option	0	0 JPY	40	58,236,445 JPY	0	0 JPY
Repurchase	0	0 JPY	0	0 JPY	0	0 JPY
Total	31,225	64,299,952,999 JPY	31,225	1,605,544,914 JPY	30,746	62,694,408,085 JPY

Pool Balance after entrustment of Additional Auto Loan Receivables

Status	Number of Contracts EoP before entrustment of Additional Auto Loan Receivables	Outstanding Discounted Principal Balance EoP before entrustment of Additional Auto Loan Receivables	Number of Contracts of Additional Auto Loan Receivables	Outstanding Discounted Principal Balance of Additional Auto Loan Receivables	Number of Contracts EoP after entrustment of Additional Auto Loan Receivables	Outstanding Discounted Principal Balance EoP after entrustment of Additional Auto Loan Receivables
Normal	30,746	62,694,408,085 JPY	826	1,767,309,912 JPY	31,572	64,461,717,997 JPY
Cancellation	0	0 JPY	0	0 JPY	0	0 JPY
Early Termination	0	0 JPY	0	0 JPY	0	0 JPY
Defaulted Receivables	0	0 JPY	0	0 JPY	0	0 JPY
Matured	0	0 JPY	0	0 JPY	0	0 JPY
Refinance Option	0	0 JPY	0	0 JPY	0	0 JPY
Repurchase	0	0 JPY	0	0 JPY	0	0 JPY
Total	30,746	62,694,408,085 JPY	826	1,767,309,912 JPY	31,572	64,461,717,997 JPY

Limits on Eligibility Criteria

Status Limits on Eligibility Criteria (v) (including Additional Entrustment)	Current Exposure in %	Limits in % of the aggregate Discounted Principal Balance of the Auto Loan Receivables outstanding	Status
(i) on Used Purchased Vehicle	22.75 %	35 %	OK
(ii) on Non-VW Vehicles	0.03 %	5 %	OK
(iii) on Balloon Payment	40.38 %	50 %	OK

Outstanding Balances

Monthly Period: from 2017/03/11 to 2017/04/10
Reporting Date: 2017/04/17
Trust Calculation Date: 2017/04/26

Outstanding Balances

	Number of Contracts	Aggregate Amount of the Discounted Principal Balance	Aggregate Amount of the Nominal Balance
Balance on the previous EoP	31,225	64,299,952,999 JPY	67,099,457,700 JPY
Balance after counting on the Collections during the relevant	30,746	62,694,408,085 JPY	65,364,722,800 JPY
Balance of Additional Auto Loan Receivables	826	1,767,309,912 JPY	1,850,244,600 JPY
Aggregate Amount of Auto Loan Receivables	31,572	64,461,717,997 JPY	67,214,967,400 JPY

Collections

	Number of Contracts	Aggregate Amount of the Discounted Principal Balance	Aggregate Amount of the Nominal Balance
Collections: Amortization of current contracts	30,746	1,023,372,297 JPY	1,137,636,500 JPY
Collections: Cancellation	0	0 JPY	0 JPY
Collections: Early Termination	216	391,010,039 JPY	391,641,233 JPY
Collections: Defaulted Receivables	0	0 JPY	0 JPY
Collections: Matured	223	132,926,133 JPY	133,130,600 JPY
Collections: Refinance Option	40	58,236,445 JPY	58,330,000 JPY
Collections: Repurchase	0	0 JPY	0 JPY
Sum	31,225	1,605,544,914 JPY	1,720,738,333 JPY

Available Distribution Amount

	Number of Contracts	Aggregate Amount of the Nominal Balance
(a) the Collections for the Monthly Period with respect to such Trust Calculation Date	31,225	1,720,738,333 JPY
(b) drawings from the Cash Collateral Ledger in accordance with Article 18.3 of the First Trust Agreement	0	0 JPY
(c) net investment earnings from Eligible Investments	0	0 JPY
(d) net proceeds from the sale or disposal of the Trust Assets of the First Trust	0	0 JPY
(e) any amount which is carried over from the immediately preceding Trust Calculation Date	0	0 JPY
Sum	31,225	1,720,738,333 JPY

Waterfall

There is no distinction between principal and interest, and all collections go through a single priority of payments			
		Payment	Remaining Amount
Available Distribution Amount	plus	1,720,738,333 JPY	1,720,738,333 JPY
(a) an amount necessary for the payment of all taxes and public charges to be paid to the relevant public authority by the immediately following First Trust Payment Date.	less	0 JPY	1,720,738,333 JPY
(b) an amount necessary for the payment of all Fees for the Trustee of the First Trust to be paid to the Trustee of the First Trust by the immediately following First Trust Payment Date.	less	578,698 JPY	1,720,159,635 JPY
(c) an amount necessary for the payment of the Servicing Fee to be paid to the Servicer by the immediately following First Trust Payment Date.	less	57,869,957 JPY	1,662,289,678 JPY
(d) an amount necessary for the payment of the Trust Expenses of the First Trust as provided in Article 23.1 (including the Rating Fees, Costs of the Second Trust and those fees not otherwise covered by (b) or (c) above) to be paid to the relevant party by the immediately following First Trust Payment Date (including any amounts advanced by the Trustee of the First Trust pursuant to Article 23.3)	less	591,766 JPY	1,661,697,912 JPY
(e) an amount necessary for the payment of overdue and unpaid interest on the Asset Backed Loans to the First Trust (if any) to be paid to the Trustee of the Second Trust by the immediately following First Trust Payment Date.	less	0 JPY	1,661,697,912 JPY
(f) an amount necessary for the payment to the Trustee of the Second Trust of interest on the Asset Backed Loan to the First Trust accruing during the relevant Interest Calculation Period	less	9,500,000 JPY	1,652,197,912 JPY
(g) an amount necessary to top up the balance thereof until it is equal to the Cash Collateral Ledger Target Balance	less	0 JPY	1,652,197,912 JPY
(h) (i) prior to the expiration of the Revolving Period: an amount necessary for the redemption of any Additional Senior Beneficial Interest;	less	1,652,197,912 JPY	0 JPY
(ii) following the expiration of the Revolving Period and prior to the occurrence of an Early Amortization Event, an amount necessary for the payment to the Trustee of the Second Trust of the Asset Backed Loan Principal Payment Amount for the relevant First Trust Payment Date.			
(iii) following the occurrence of the Early Amortization Event, an amount necessary for the payment to the Trustee of the Second Trust of the remaining principal balance of the Asset Backed Loan to the First Trust.			
(i) an amount necessary for the payment to the Trustee of the First Trust of any Indemnified Amounts which are not compensated by the Trustor of the First Trust	less	0 JPY	0 JPY
(j) an amount necessary for the payment to the Subordinated Beneficiary of the Subordinated Beneficial Principal Payment Amount for the relevant First Trust Payment Date.	less	0 JPY	0 JPY
(k) (i) prior to the expiration of the Revolving Period, then (x) if a transfer is made under (j) above, such remaining amount will be transferred to the Expenses Distribution Ledger for payment to the Subordinated Beneficiary as a payment of earnings on the Subordinated Beneficial Interest, and such payment shall be made on the First Trust Payment Date immediately following such Trust Calculation Date or (y) if no transfer is made under (j) above, such remaining amount will be carried forward to the next Trust Calculation Date.	less	0 JPY	0 JPY
(ii) following the expiration of the Revolving Period and prior to the occurrence of an Early Amortization Event, then such remaining amount will be transferred to the Expenses Distribution Ledger for payment to the Subordinated Beneficiary as a payment of earnings on the Subordinated Beneficial Interest, and such payment shall be made on the First Trust Payment Date immediately following such Trust Calculation Date.			
(iii) following the occurrence of an Early Amortization Event, the remaining amount in the Trust Collection Ledger will be carried forward to the next Trust Calculation Date.			

Credit Enhancement

Subordinated Principal Balance as of the relevant First Trust Payment Date

	Percentage of Aggregate Discounted Principal Balance	Value
(i) the aggregate amount of the Discounted Principal Balance of all Auto Loan Receivables outstanding		64,461,717,997 JPY
(ii) Asset Backed Loan Principal Balance on the relevant First Trust Payment Date		60,000,000,000 JPY
Overcollateralization (= (i) - (ii))	6.92 %	4,461,717,997 JPY
Trust Collection Ledger which is carried over from the immediately preceding Trust Calculation Date	0.00 %	0 JPY
The amount in the Cash Collateral Ledger	0.54 %	345,000,000 JPY
Subordinated Principal Balance	7.46 %	4,806,717,997 JPY

Trust Management Account (TMA)

	in JPY	+/-	in JPY (previous)
Initial Balance on Cash Entrustment Date	345,000,000 JPY		0 JPY
Outstanding Balance on First Trust Payment Date	345,000,000 JPY	0 JPY	345,000,000 JPY
(a) Expenses Distribution Ledger	0 JPY	0 JPY	0 JPY
(b) Trust Collection Ledger	0 JPY	0 JPY	0 JPY
(c) Cash Collateral Ledger	345,000,000 JPY	0 JPY	345,000,000 JPY
Cash Collateral Ledger Target Balance	345,000,000 JPY		

Calculation of Credit Enhancement

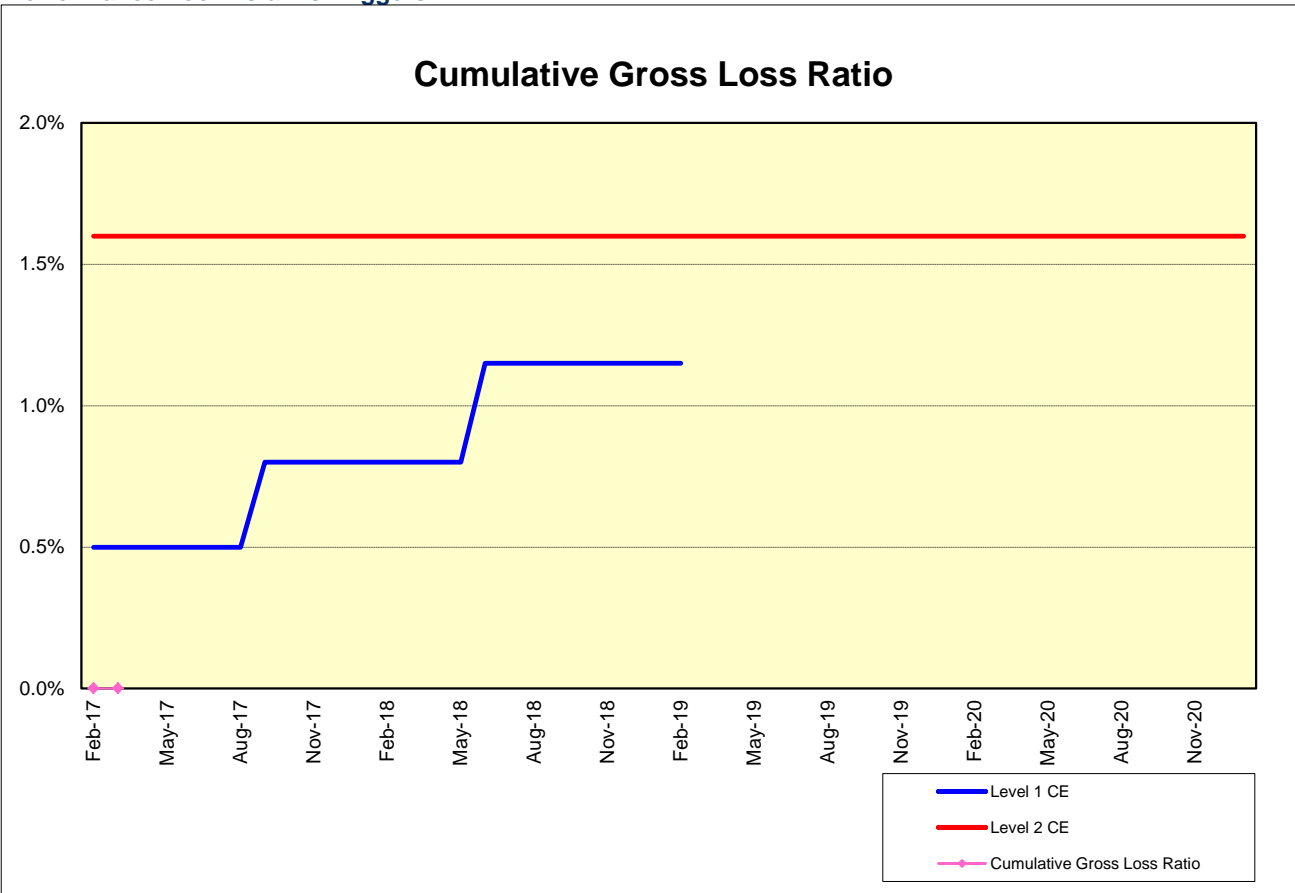
Driver Japan six's Credit Enhancement consists of the items listed above in the Subordinated Principal Balance as of the relevant date of determination (immediately following the First Trust Payment Date). The result provides an absolute value, which will be applied to the (amortized) Aggregate Discounted Principal Balance as of the end of the relevant date.

The transaction has a Revolving Period of 12 months until February 2018.

Asset Backed Loan Overcollateralization Percentage is (i) prior to the expiration of the Revolving Period, 8.5%, and (ii) following the expiration of the Revolving Period, 11.5%; provided, in each case no Credit Enhancement Increase Condition shall be in effect. After a Level 1 Credit Enhancement Increase Condition in effect, 17% and after a Level 2 Credit Enhancement Increase Condition is in effect, 100%.

Cumulative Gross Loss & Cumulative Repurchased Receivables

Performance Pool vis-a-vis Triggers



Cumulative Repurchased Receivables

	Number of Contracts	Repurchase Price
Beginning of Period	0	0 JPY
Repurchased Receivables	0	0 JPY
End of Period	0	0 JPY

Defaulted and Delinquent Contracts

Information of Delinquencies and Defaults

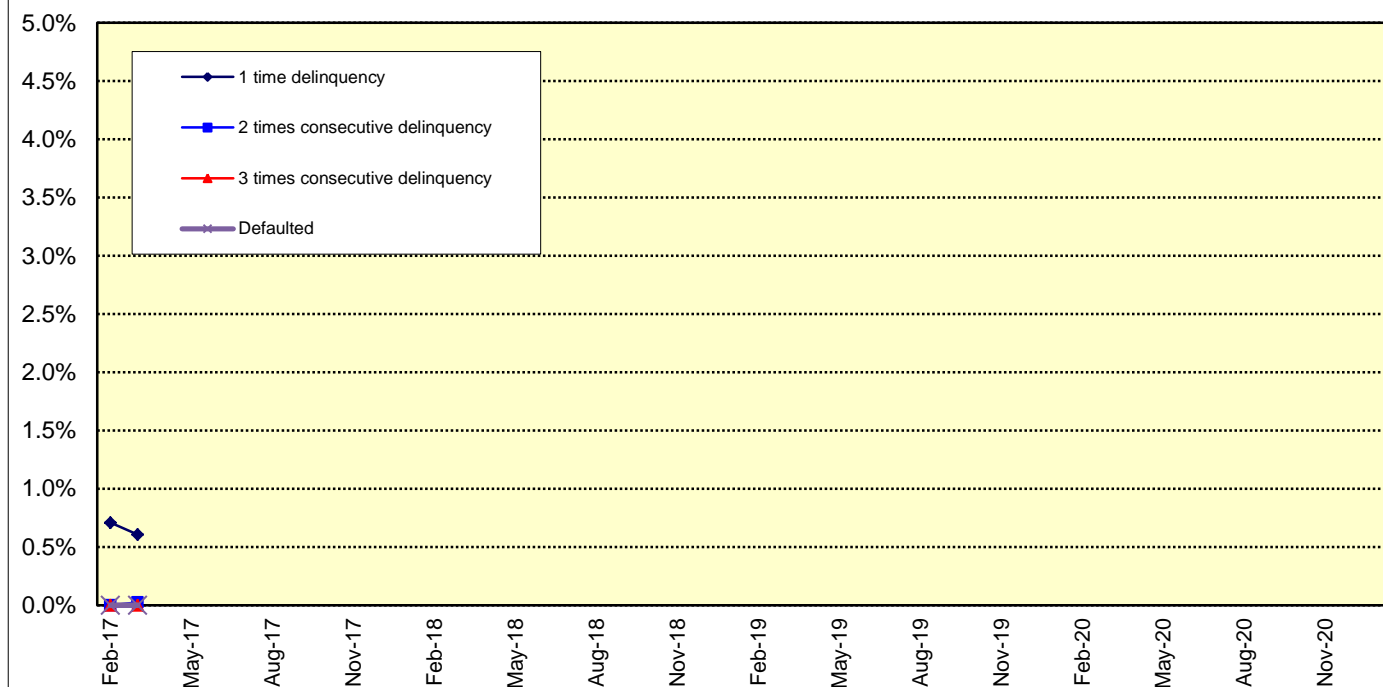
Current Reporting Period	Number of Contracts	Percentage of Contracts (*)	Outstanding Discounted Principal Balance	Percentage of Principal Balance (*)	Outstanding Nominal Balance	Percentage of Nominal Balance (*)
Delinquent	195	0.62 %	406,316,992 JPY	0.63 %	427,283,400 JPY	0.64 %
Default	0	0.00 %	0 JPY	0.00 %	0 JPY	0.00 %

(*) Based on the previous EoP

Delinquency Profile (Information Purpose Only)

Days in Arrears	Number of Contracts	Percentage of Contracts	Outstanding Discounted Principal Balance	Percentage of Principal Balance	Outstanding Nominal Balance	Percentage of Nominal Balance
1	189	0.60 %	390,815,909 JPY	0.61 %	410,735,400 JPY	0.61 %
2	6	0.02 %	15,501,083 JPY	0.02 %	16,548,000 JPY	0.02 %
3	0	0.00 %	0 JPY	0.00 %	0 JPY	0.00 %
Total	195	0.62 %	406,316,992 JPY	0.63 %	427,283,400 JPY	0.64 %

Delinquent / Defaulted (Gross Loss) Ratio



Run Out Schedule

ROS on the previous EoP on 2017/03/10

Next Payment Month	Number of Contracts	ABS Outstanding Principal	ABS Outstanding Interest	Outstanding Installment	ABS Remaining Principal	ABS Remaining Interest	ABS Remaining Installment
02.2017	31,225	64,299,952,999 JPY	2,799,504,701 JPY	67,099,457,700 JPY	0 JPY	0 JPY	0 JPY
03.2017	31,225	63,077,638,460 JPY	2,684,212,640 JPY	65,761,851,100 JPY	1,222,314,539 JPY	115,292,061 JPY	1,337,606,600 JPY
04.2017	30,960	61,969,119,858 JPY	2,571,163,542 JPY	64,540,283,400 JPY	1,108,518,602 JPY	113,049,098 JPY	1,221,567,700 JPY
05.2017	30,821	60,794,436,837 JPY	2,460,170,663 JPY	63,254,607,500 JPY	1,174,683,021 JPY	110,992,879 JPY	1,285,675,900 JPY
06.2017	30,625	59,105,818,930 JPY	2,351,304,170 JPY	61,457,123,100 JPY	1,688,617,907 JPY	108,866,493 JPY	1,797,484,400 JPY
07.2017	30,352	57,284,948,841 JPY	2,245,513,759 JPY	59,530,462,600 JPY	1,820,870,089 JPY	105,790,411 JPY	1,926,660,500 JPY
08.2017	30,130	55,981,897,609 JPY	2,143,068,691 JPY	58,124,966,300 JPY	1,303,051,232 JPY	102,445,068 JPY	1,405,496,300 JPY
09.2017	29,885	54,553,396,852 JPY	2,042,982,748 JPY	56,596,379,600 JPY	1,428,500,757 JPY	100,085,943 JPY	1,528,586,700 JPY
10.2017	29,425	53,375,255,657 JPY	1,945,340,743 JPY	55,320,596,400 JPY	1,178,141,195 JPY	97,642,005 JPY	1,275,783,200 JPY
11.2017	29,162	52,114,183,735 JPY	1,849,814,665 JPY	53,963,998,400 JPY	1,261,071,922 JPY	95,526,078 JPY	1,356,598,000 JPY
12.2017	28,816	49,759,063,237 JPY	1,756,515,763 JPY	51,515,579,000 JPY	2,355,120,498 JPY	93,298,902 JPY	2,448,419,400 JPY
01.2018	28,313	48,246,994,588 JPY	1,667,369,512 JPY	49,914,364,100 JPY	1,512,068,649 JPY	89,146,251 JPY	1,601,214,900 JPY
02.2018	27,888	46,833,149,540 JPY	1,580,971,560 JPY	48,414,121,100 JPY	1,413,845,048 JPY	86,397,952 JPY	1,500,243,000 JPY
03.2018	27,269	44,895,720,744 JPY	1,497,030,956 JPY	46,392,751,700 JPY	1,937,428,796 JPY	83,940,604 JPY	2,021,369,400 JPY
04.2018	26,146	43,717,295,325 JPY	1,416,076,275 JPY	45,133,371,600 JPY	1,178,425,419 JPY	80,954,681 JPY	1,259,380,100 JPY
05.2018	25,756	42,396,499,606 JPY	1,337,201,394 JPY	43,733,701,000 JPY	1,320,795,719 JPY	78,874,881 JPY	1,399,670,600 JPY
06.2018	25,199	40,438,943,848 JPY	1,260,595,352 JPY	41,699,539,200 JPY	1,957,555,758 JPY	76,606,042 JPY	2,034,161,800 JPY
07.2018	24,416	38,691,029,098 JPY	1,187,333,502 JPY	39,878,362,600 JPY	1,747,914,750 JPY	73,261,850 JPY	1,821,176,600 JPY
08.2018	23,840	37,375,362,160 JPY	1,117,242,040 JPY	38,492,604,200 JPY	1,315,666,938 JPY	70,091,462 JPY	1,480,758,400 JPY
09.2018	23,346	35,901,277,130 JPY	1,049,528,870 JPY	36,950,806,000 JPY	1,474,085,030 JPY	67,713,170 JPY	1,541,798,200 JPY
10.2018	22,555	34,799,664,249 JPY	984,398,751 JPY	35,784,063,000 JPY	1,101,612,881 JPY	65,130,119 JPY	1,166,743,000 JPY
11.2018	22,115	33,641,501,092 JPY	921,291,008 JPY	34,562,792,100 JPY	1,158,163,157 JPY	63,107,743 JPY	1,221,270,900 JPY
12.2018	21,551	31,420,430,428 JPY	860,252,372 JPY	32,280,682,800 JPY	2,221,070,664 JPY	61,038,636 JPY	2,282,109,300 JPY
01.2019	20,792	29,996,639,412 JPY	803,212,488 JPY	30,799,851,900 JPY	1,423,791,016 JPY	57,039,884 JPY	1,480,830,900 JPY
02.2019	20,303	28,614,256,475 JPY	748,741,525 JPY	29,362,998,000 JPY	1,382,382,937 JPY	54,470,963 JPY	1,436,853,900 JPY
03.2019	19,603	26,655,506,774 JPY	696,731,926 JPY	27,352,238,700 JPY	1,958,749,701 JPY	52,009,599 JPY	2,010,759,300 JPY
04.2019	18,417	25,404,177,762 JPY	648,084,138 JPY	26,052,261,900 JPY	1,251,329,012 JPY	48,647,788 JPY	1,299,976,800 JPY
05.2019	17,897	24,022,316,205 JPY	601,583,495 JPY	24,623,899,700 JPY	1,381,861,557 JPY	46,500,643 JPY	1,428,362,200 JPY
06.2019	17,212	22,508,189,812 JPY	557,413,988 JPY	22,615,603,800 JPY	1,964,126,393 JPY	44,169,507 JPY	2,008,295,900 JPY
07.2019	16,305	20,454,714,572 JPY	516,505,628 JPY	20,971,220,200 JPY	1,603,475,240 JPY	40,908,360 JPY	1,644,383,600 JPY
08.2019	15,664	19,070,143,791 JPY	478,344,709 JPY	19,548,488,500 JPY	1,384,570,781 JPY	38,160,919 JPY	1,422,731,700 JPY
09.2019	14,963	17,301,841,096 JPY	442,397,304 JPY	17,744,238,400 JPY	1,768,302,695 JPY	35,947,405 JPY	1,804,250,100 JPY
10.2019	13,899	16,085,687,765 JPY	409,144,835 JPY	16,494,832,600 JPY	1,216,153,331 JPY	33,252,469 JPY	1,249,405,800 JPY
11.2019	13,217	14,509,999,153 JPY	377,884,947 JPY	14,887,884,100 JPY	1,575,688,612 JPY	31,259,888 JPY	1,606,948,500 JPY
12.2019	12,290	13,609,830,331 JPY	348,995,269 JPY	13,958,825,600 JPY	900,168,822 JPY	28,889,678 JPY	929,058,500 JPY
01.2020	12,029	13,051,596,745 JPY	321,928,055 JPY	13,373,524,800 JPY	558,233,586 JPY	27,067,214 JPY	585,300,800 JPY
02.2020	11,850	12,592,178,743 JPY	296,023,557 JPY	12,888,202,300 JPY	459,418,002 JPY	25,904,498 JPY	485,322,500 JPY
03.2020	11,597	12,100,971,347 JPY	271,081,853 JPY	12,372,053,200 JPY	491,207,396 JPY	24,941,704 JPY	516,149,100 JPY
04.2020	11,268	11,695,507,495 JPY	247,162,405 JPY	11,942,669,900 JPY	405,463,852 JPY	23,919,448 JPY	429,383,300 JPY
05.2020	11,134	11,252,224,256 JPY	224,078,844 JPY	11,476,303,100 JPY	443,283,239 JPY	23,083,561 JPY	466,366,800 JPY
06.2020	10,899	10,637,561,686 JPY	201,915,414 JPY	10,839,477,100 JPY	614,662,570 JPY	22,163,430 JPY	636,826,000 JPY
07.2020	10,653	9,993,089,364 JPY	181,010,536 JPY	10,174,099,900 JPY	644,472,322 JPY	20,904,878 JPY	665,377,200 JPY
08.2020	10,442	9,519,477,474 JPY	161,410,826 JPY	9,680,888,300 JPY	473,611,890 JPY	19,599,710 JPY	493,211,600 JPY
09.2020	10,181	9,057,039,767 JPY	142,773,233 JPY	9,199,813,000 JPY	462,437,707 JPY	18,637,593 JPY	481,075,300 JPY
10.2020	9,846	8,654,947,120 JPY	125,098,080 JPY	8,780,045,200 JPY	402,092,647 JPY	17,675,153 JPY	419,767,800 JPY
11.2020	9,615	8,227,458,137 JPY	108,253,463 JPY	8,335,711,600 JPY	427,488,983 JPY	16,844,617 JPY	444,333,600 JPY
12.2020	9,325	7,455,037,832 JPY	92,305,668 JPY	7,547,343,500 JPY	772,420,305 JPY	15,947,795 JPY	788,368,100 JPY
01.2021	8,944	6,817,617,337 JPY	77,932,363 JPY	6,895,549,700 JPY	637,420,495 JPY	14,373,305 JPY	651,793,800 JPY
02.2021	8,466	6,095,180,141 JPY	64,781,959 JPY	6,159,962,100 JPY	722,437,196 JPY	13,150,404 JPY	735,587,600 JPY
03.2021	7,749	5,252,461,024 JPY	53,000,476 JPY	5,305,461,500 JPY	842,719,117 JPY	11,781,483 JPY	854,500,600 JPY
04.2021	6,730	4,787,474,801 JPY	42,806,799 JPY	4,830,281,600 JPY	484,986,223 JPY	10,193,677 JPY	475,179,900 JPY
05.2021	6,230	4,253,176,975 JPY	33,549,425 JPY	4,286,726,400 JPY	534,297,826 JPY	9,257,374 JPY	543,555,200 JPY
06.2021	5,562	3,622,348,711 JPY	25,352,189 JPY	3,647,700,900 JPY	630,828,264 JPY	8,197,236 JPY	639,025,500 JPY
07.2021	4,848	2,927,906,520 JPY	18,447,380 JPY	2,946,353,900 JPY	694,442,191 JPY	6,904,809 JPY	701,347,000 JPY
08.2021	4,103	2,296,862,158 JPY	12,884,242 JPY	2,309,746,400 JPY	631,044,362 JPY	5,563,138 JPY	636,607,500 JPY
09.2021	3,282	1,423,788,753 JPY	8,474,147 JPY	1,432,262,900 JPY	873,073,405 JPY	4,410,095 JPY	877,483,500 JPY
10.2021	2,149	898,521,675 JPY	5,711,625 JPY	904,233,300 JPY	525,267,078 JPY	2,762,522 JPY	528,029,600 JPY
11.2021	1,432	238,798,873 JPY	3,914,627 JPY	242,713,500 JPY	659,722,802 JPY	1,796,998 JPY	661,519,800 JPY
12.2021	512	179,232,688 JPY	3,311,312 JPY	182,544,000 JPY	59,566,185 JPY	603,315 JPY	60,169,500 JPY
01.2022	449	158,636,277 JPY	2,844,223 JPY	161,480,500 JPY	20,596,411 JPY	467,089 JPY	21,063,500 JPY
02.2022	439	141,878,733 JPY	2,428,467 JPY	144,307,200 JPY	16,757,544 JPY	415,756 JPY	17,173,300 JPY
03.2022	420	125,799,789 JPY	2,054,111 JPY	127,853,900 JPY	127,853,900 JPY	374,356 JPY	16,453,300 JPY
04.2022	389	110,672,947 JPY	1,719,253 JPY	112,392,200 JPY	15,126,842 JPY	334,858 JPY	15,461,700 JPY
05.2022	365	96,390,771 JPY	1,421,329 JPY	97,812,100 JPY	14,282,176 JPY	297,924 JPY	14,580,100 JPY
06.2022	337	78,065,207 JPY	1,158,093 JPY	79,223,300 JPY	18,325,564 JPY	263,236 JPY	18,588,800 JPY
07.2022	302	58,949,380 JPY	939,120 JPY	59,888,500 JPY	19,115,827 JPY	218,973 JPY	19,334,800 JPY
08.2022	264	47,421,840 JPY	765,860 JPY	48,187,700 JPY	11,527,540 JPY	173,260 JPY	11,700,800 JPY
09.2022	185	40,011,415 JPY	619,685 JPY	40,631,100 JPY	7,410,425 JPY	146,175 JPY	7,556,600 JPY
10.2022	138	34,214,241 JPY	494,059 JPY	34,708,300 JPY	5,797,174 JPY	125,626 JPY	5,922,800 JPY
11.2022	112	29,273,078 JPY	385,622 JPY	29,658,700 JPY	4,941,163 JPY	108,437 JPY	5,049,600 JPY
12.2022	87	21,949,122 JPY	292,378 JPY	22,241,500 JPY	7,323,956 JPY	93,244 JPY	7,417,200 JPY
01.2023	74	17,605,337 JPY	222,463 JPY	17,827,800 JPY	4,343,785 JPY	69,915 JPY	4,413,700 JPY
02.2023	68	14,503,614 JPY	166,386 JPY	14,670,000 JPY	3,101,723 JPY	56,077 JPY	3,157,800 JPY
03.2023	59	11,836,314 JPY	120,186 JPY	11,956,500 JPY	2,667,300 JPY	46,200 JPY	2,713,500 JPY
04.2023	54	9,320,916 JPY	82,484 JPY	9,403,400 JPY	2,515,398 JPY	37,702 JPY	2,553,100 JPY
05.2023	48	7,035,305 JPY	52,795 JPY	7,088,100 JPY	2,285,611 JPY	29,689 JPY	2,315,300 JPY
06.2023	37	4,628,717 JPY	30,383 JPY	4,659,100 JPY	2,406,588 JPY	22,412 JPY	2,429,000 JPY
07.2023	27	2,999,259 JPY	15,641 JPY	3,014,900 JPY	1,629,458 JPY	14,742 JPY	1,644,200 JPY
08.2023	25	1,401,012 JPY	6,088 JPY	1,407,100 JPY	1,598,247 JPY	9,553 JPY	1,607,800 JPY
09.2023	19	436,272 JPY	1,628 JPY	437,900 JPY	964,740 JPY	4,460 JPY	969,200 JPY
10.2023	7	75,161 JPY	239 JPY	75,400 JPY	361,111 JPY	1,389 JPY	362,500 JPY
11.2023	2	0 JPY	0 JPY	0 JPY	75,161 JPY	239 JPY	75,400 JPY

Run Out Schedule

ROS on the relevant EoP on 2017/04/10

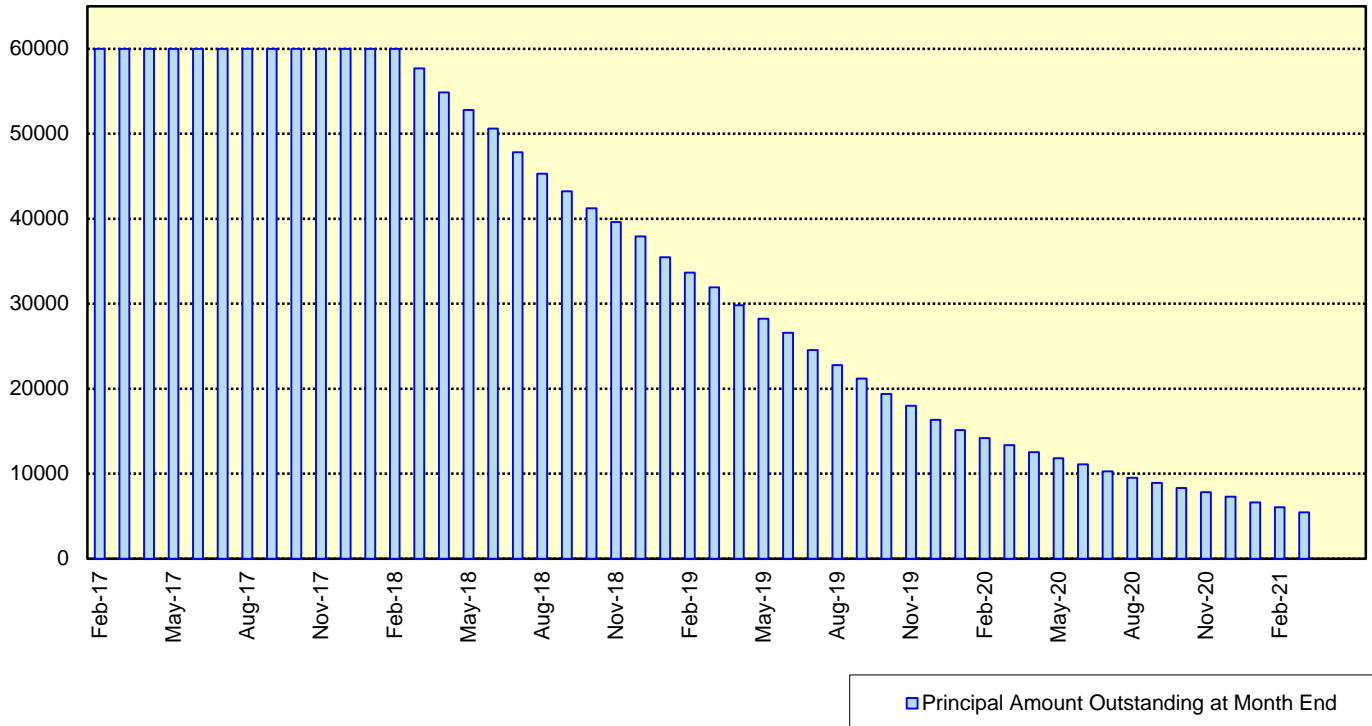
Next Payment Month	Number of Contracts	ABS Outstanding Principal	ABS Outstanding Interest	Outstanding Installment	ABS Remaining Principal	ABS Remaining Interest	ABS Remaining Installment
03.2017	31,572	64,461,717,997 JPY	2,753,249,403 JPY	67,214,967,400 JPY	0 JPY	0 JPY	0 JPY
04.2017	31,572	63,341,656,914 JPY	2,637,776,286 JPY	65,979,433,200 JPY	1,120,061,083 JPY	115,473,117 JPY	1,235,534,200 JPY
05.2017	31,439	62,148,141,208 JPY	2,524,379,992 JPY	64,672,521,200 JPY	1,193,515,706 JPY	113,396,294 JPY	1,306,912,000 JPY
06.2017	31,242	60,428,723,826 JPY	2,413,144,874 JPY	62,841,868,700 JPY	1,719,417,382 JPY	111,235,118 JPY	1,830,652,500 JPY
07.2017	30,969	58,580,303,495 JPY	2,305,041,805 JPY	60,885,345,300 JPY	1,848,420,331 JPY	108,103,069 JPY	1,956,523,400 JPY
08.2017	30,745	57,254,636,322 JPY	2,200,337,078 JPY	59,454,973,400 JPY	1,325,667,173 JPY	104,704,727 JPY	1,430,371,900 JPY
09.2017	30,502	55,806,518,209 JPY	2,098,029,691 JPY	57,904,547,900 JPY	1,448,118,113 JPY	102,307,387 JPY	1,550,425,500 JPY
10.2017	30,039	54,606,763,392 JPY	1,998,201,008 JPY	56,604,964,400 JPY	1,199,754,817 JPY	99,828,683 JPY	1,299,583,500 JPY
11.2017	29,771	53,323,695,751 JPY	1,900,525,849 JPY	55,224,221,600 JPY	1,283,067,641 JPY	97,675,159 JPY	1,380,742,800 JPY
12.2017	29,419	50,930,605,512 JPY	1,805,116,488 JPY	52,735,722,000 JPY	2,393,090,239 JPY	95,409,361 JPY	2,488,499,600 JPY
01.2018	28,912	49,393,570,257 JPY	1,713,927,543 JPY	51,107,497,800 JPY	1,537,035,255 JPY	91,188,945 JPY	1,628,224,200 JPY
02.2018	28,486	47,959,827,086 JPY	1,625,529,114 JPY	49,585,356,200 JPY	1,433,743,171 JPY	88,398,429 JPY	1,522,141,600 JPY
03.2018	27,861	45,995,873,525 JPY	1,539,621,675 JPY	47,535,495,200 JPY	1,963,953,561 JPY	85,907,439 JPY	2,049,861,000 JPY
04.2018	26,732	44,802,917,645 JPY	1,456,742,855 JPY	46,259,660,500 JPY	1,192,955,880 JPY	82,878,820 JPY	1,575,834,700 JPY
05.2018	26,342	43,458,962,745 JPY	1,375,973,055 JPY	44,834,935,800 JPY	1,343,954,900 JPY	80,769,800 JPY	1,424,724,700 JPY
06.2018	25,777	41,466,183,793 JPY	1,297,510,707 JPY	42,767,694,500 JPY	1,992,778,952 JPY	78,462,348 JPY	2,071,241,300 JPY
07.2018	24,986	39,682,683,471 JPY	1,222,449,129 JPY	40,905,132,600 JPY	1,783,500,322 JPY	75,061,578 JPY	1,858,561,900 JPY
08.2018	24,402	38,333,583,296 JPY	1,150,621,004 JPY	39,484,204,300 JPY	1,349,100,175 JPY	71,828,125 JPY	1,420,928,300 JPY
09.2018	23,896	36,829,295,214 JPY	1,081,224,086 JPY	37,910,519,300 JPY	1,504,288,082 JPY	69,396,918 JPY	1,573,685,000 JPY
10.2018	23,087	35,710,786,090 JPY	1,014,459,110 JPY	36,725,245,200 JPY	1,118,509,124 JPY	66,764,976 JPY	1,185,274,100 JPY
11.2018	22,641	34,527,308,254 JPY	949,747,746 JPY	35,477,056,000 JPY	1,183,477,836 JPY	64,711,364 JPY	1,248,189,200 JPY
12.2018	22,068	32,260,300,345 JPY	887,149,055 JPY	33,147,449,400 JPY	2,267,007,909 JPY	62,598,691 JPY	2,329,606,600 JPY
01.2019	21,290	30,819,112,917 JPY	828,629,883 JPY	31,647,742,800 JPY	1,441,187,428 JPY	58,519,172 JPY	1,499,706,600 JPY
02.2019	20,794	29,410,746,847 JPY	772,712,553 JPY	30,183,459,400 JPY	1,408,366,070 JPY	55,917,330 JPY	1,629,533,400 JPY
03.2019	20,086	27,424,641,042 JPY	719,299,358 JPY	28,143,940,400 JPY	1,986,105,805 JPY	53,413,195 JPY	2,039,519,000 JPY
04.2019	18,888	26,159,568,134 JPY	669,292,466 JPY	26,828,860,600 JPY	1,265,072,902 JPY	50,006,892 JPY	1,315,079,800 JPY
05.2019	18,368	24,740,866,804 JPY	621,456,296 JPY	25,362,323,100 JPY	1,418,701,330 JPY	47,836,170 JPY	1,466,537,500 JPY
06.2019	17,671	22,746,996,492 JPY	576,011,708 JPY	23,323,008,200 JPY	1,993,870,312 JPY	45,444,588 JPY	2,039,314,900 JPY
07.2019	16,756	21,104,089,759 JPY	533,882,041 JPY	21,637,971,800 JPY	1,642,906,733 JPY	42,129,667 JPY	1,464,036,400 JPY
08.2019	16,107	19,696,758,272 JPY	494,568,528 JPY	20,191,326,800 JPY	1,407,331,487 JPY	39,313,513 JPY	1,446,645,000 JPY
09.2019	15,399	17,889,614,978 JPY	457,504,022 JPY	18,347,119,000 JPY	1,807,143,294 JPY	37,064,506 JPY	1,844,207,800 JPY
10.2019	14,315	16,646,608,529 JPY	423,194,971 JPY	17,069,803,500 JPY	1,243,006,449 JPY	34,309,051 JPY	1,277,315,500 JPY
11.2019	13,618	15,049,361,014 JPY	390,919,086 JPY	15,440,280,100 JPY	1,597,247,515 JPY	32,275,885 JPY	1,629,523,400 JPY
12.2019	12,682	14,061,861,604 JPY	361,049,396 JPY	14,422,911,000 JPY	987,499,410 JPY	29,869,690 JPY	1,017,369,100 JPY
01.2020	12,375	13,448,455,349 JPY	333,139,151 JPY	13,781,594,500 JPY	613,406,255 JPY	27,910,245 JPY	641,316,500 JPY
02.2020	12,162	12,977,384,569 JPY	306,466,731 JPY	13,283,851,300 JPY	471,070,780 JPY	26,672,420 JPY	497,743,200 JPY
03.2020	11,908	12,474,076,659 JPY	280,780,841 JPY	12,754,857,500 JPY	503,307,910 JPY	25,685,890 JPY	528,993,800 JPY
04.2020	11,572	12,059,539,648 JPY	256,141,952 JPY	12,315,681,600 JPY	414,537,011 JPY	24,638,889 JPY	439,175,900 JPY
05.2020	11,437	11,604,000,894 JPY	232,357,106 JPY	11,836,358,000 JPY	455,538,754 JPY	23,784,846 JPY	479,323,600 JPY
06.2020	11,195	10,974,645,276 JPY	209,519,224 JPY	11,184,164,500 JPY	629,355,618 JPY	22,837,882 JPY	652,193,500 JPY
07.2020	10,947	10,315,654,264 JPY	187,970,236 JPY	10,503,624,500 JPY	658,991,012 JPY	21,548,988 JPY	680,540,000 JPY
08.2020	10,736	9,831,236,175 JPY	167,755,025 JPY	9,998,991,200 JPY	484,418,089 JPY	20,215,211 JPY	504,633,300 JPY
09.2020	10,471	9,357,730,938 JPY	148,523,062 JPY	9,506,254,000 JPY	473,505,237 JPY	19,231,963 JPY	492,737,200 JPY
10.2020	10,131	8,944,310,275 JPY	130,274,925 JPY	9,074,585,200 JPY	413,420,663 JPY	18,248,137 JPY	431,668,800 JPY
11.2020	9,893	8,506,562,100 JPY	112,878,300 JPY	8,619,440,400 JPY	437,748,175 JPY	17,396,625 JPY	455,144,800 JPY
12.2020	9,599	7,708,258,325 JPY	96,399,775 JPY	7,804,658,100 JPY	798,303,775 JPY	16,478,525 JPY	814,782,300 JPY
01.2021	9,205	7,052,116,932 JPY	81,548,268 JPY	7,133,665,200 JPY	656,141,393 JPY	14,851,507 JPY	670,990,000 JPY
02.2021	8,707	6,318,772,780 JPY	67,952,320 JPY	6,386,725,100 JPY	733,344,152 JPY	13,595,948 JPY	746,940,100 JPY
03.2021	7,981	5,459,899,341 JPY	55,744,759 JPY	5,515,644,100 JPY	858,873,439 JPY	12,207,561 JPY	871,081,000 JPY
04.2021	6,947	4,983,286,050 JPY	45,151,950 JPY	5,028,438,000 JPY	476,613,291 JPY	10,592,809 JPY	487,206,100 JPY
05.2021	6,443	4,440,772,679 JPY	35,522,421 JPY	4,476,295,100 JPY	542,513,371 JPY	9,629,529 JPY	552,142,900 JPY
06.2021	5,765	3,793,259,690 JPY	26,963,210 JPY	3,820,222,900 JPY	647,512,989 JPY	8,559,211 JPY	656,072,200 JPY
07.2021	5,036	3,081,629,791 JPY	19,728,609 JPY	3,101,358,400 JPY	711,629,899 JPY	7,234,601 JPY	718,864,500 JPY
08.2021	4,278	2,436,941,318 JPY	13,867,282 JPY	2,450,808,600 JPY	644,688,473 JPY	5,861,327 JPY	650,549,800 JPY
09.2021	3,446	1,539,183,825 JPY	9,185,575 JPY	1,548,369,400 JPY	897,757,493 JPY	4,681,707 JPY	902,439,200 JPY
10.2021	2,292	994,710,225 JPY	6,197,675 JPY	1,000,907,900 JPY	544,473,600 JPY	2,987,900 JPY	547,461,500 JPY
11.2021	1,555	317,135,842 JPY	4,215,458 JPY	321,351,300 JPY	677,574,383 JPY	1,982,217 JPY	679,556,600 JPY
12.2021	611	218,628,001 JPY	3,459,599 JPY	222,087,600 JPY	98,507,841 JPY	755,859 JPY	99,263,700 JPY
01.2022	505	162,636,982 JPY	2,918,018 JPY	165,555,000 JPY	55,991,019 JPY	541,581 JPY	56,532,600 JPY
02.2022	449	145,588,023 JPY	2,491,877 JPY	148,079,900 JPY	17,048,959 JPY	426,141 JPY	17,475,100 JPY
03.2022	431	129,188,654 JPY	2,107,846 JPY	131,296,500 JPY	16,399,369 JPY	384,031 JPY	16,783,400 JPY
04.2022	400	113,740,597 JPY	1,764,103 JPY	115,504,700 JPY	15,448,057 JPY	343,743 JPY	15,791,800 JPY
05.2022	378	99,072,413 JPY	1,458,087 JPY	100,530,500 JPY	14,668,184 JPY	306,016 JPY	14,974,200 JPY
06.2022	350	80,159,893 JPY	1,187,707 JPY	81,347,600 JPY	18,912,520 JPY	270,380 JPY	19,182,900 JPY
07.2022	310	60,539,841 JPY	963,059 JPY	61,502,900 JPY	19,620,052 JPY	224,648 JPY	19,844,700 JPY
08.2022	271	48,670,683 JPY	785,117 JPY	49,455,800 JPY	11,869,158 JPY	177,942 JPY	12,047,100 JPY
09.2022	191	41,092,289 JPY	635,211 JPY	41,727,500 JPY	7,578,394 JPY	149,906 JPY	7,728,300 JPY
10.2022	144	35,126,673 JPY	506,327 JPY	35,633,000 JPY	5,965,616 JPY	128,884 JPY	6,094,500 JPY
11.2022	118	30,016,597 JPY	395,103 JPY	30,411,700 JPY	5,110,076 JPY	111,224 JPY	5,221,300 JPY
12.2022	92	22,312,154 JPY	299,546 JPY	22,611,700 JPY	7,704,443 JPY	95,557 JPY	7,800,000 JPY
01.2023	75	17,941,325 JPY	228,475 JPY	18,169,800 JPY	4,370,829 JPY	71,071 JPY	4,441,900 JPY
02.2023	69	14,812,472 JPY	171,328 JPY	14,983,800 JPY	3,128,853 JPY	57,147 JPY	3,186,000 JPY
03.2023	60	12,117,956 JPY	124,144 JPY	12,242,100 JPY	2,694,516 JPY	47,184 JPY	2,741,700 JPY
04.2023	55	9,575,255 JPY	85,545 JPY	9,660,800 JPY	2,542,701 JPY	38,599 JPY	2,581,300 JPY
05.2023	49	7,262,254 JPY	55,046 JPY	7,317,300 JPY	2,313,001 JPY	30,499 JPY	2,343,500 JPY
06.2023	38	4,828,189 JPY	31,911 JPY	4,860,100 JPY	2,434,065 JPY	23,135 JPY	2,457,200 JPY
07.2023	28	3,111,166 JPY	16,534 JPY	3,127,700 JPY	1,717,023 JPY	15,377 JPY	1,732,400 JPY
08.2023	26	1,485,075 JPY	6,625 JPY	1,491,700 JPY	1,626,091 JPY	9,909 JPY	1,636,000 JPY
09.2023	20	492,403 JPY	1,897 JPY	494,300 JPY	992,672 JPY	4,728 JPY	997,400 JPY
10.2023	8	103,271 JPY	329 JPY	103,600 JPY	389,132 JPY	1,568 JPY	390,700 JPY
11.2023	3	0 JPY	0 JPY	0 JPY	103,271 JPY	329 JPY	103,600 JPY

Expected Amortisation

Expected Amortization to the Second Trust

JPY mil.

Assuming a Clean-Up Call at 10% of the Initial Outstanding Balance, annual prepayments of 10% and 0% defaults.



Distribution by Sub-Servicer

Sub-Servicer	Number of Loans	Percentage of Loans	Outstanding Principal Balance	Percentage of Balance
Cedyna	18,858	59.73 %	39,425,185,714 JPY	61.16 %
Jaccs	12,714	40.27 %	25,036,532,283 JPY	38.84 %
Total	31,572	100.00 %	64,461,717,997 JPY	100.00 %

Distribution by Brand

Make	Number of Loans	Percentage of Loans	Outstanding Discounted Principal Balance	Percentage of Balance
VW	20,021	63.41 %	33,306,776,123 JPY	51.67 %
Audi	11,510	36.46 %	31,000,181,351 JPY	48.09 %
Bentley	15	0.05 %	110,075,155 JPY	0.17 %
Lamborghini	5	0.02 %	26,109,349 JPY	0.04 %
Other	21	0.07 %	18,576,019 JPY	0.03 %
Total	31,572	100.00 %	64,461,717,997 JPY	100.00 %

Distribution by New and Used
Distribution by New and Used

New or Used	Number of Loans	Percentage of Loans	Outstanding Discounted Principal Balance	Percentage of Balance
New	21,033	66.62 %	49,794,794,441 JPY	77.25 %
Used	7,765	24.59 %	12,977,756,073 JPY	20.13 %
Used (Prolonged)	2,774	8.79 %	1,689,167,483 JPY	2.62 %
Total	31,572	100.00 %	64,461,717,997 JPY	100.00 %

Distribution by Brand New and Used

New or Used	Number of Loans	Percentage of Loans	Outstanding Discounted Principal Balance	Percentage of Balance
VW New	13,549	42.91 %	26,818,181,195 JPY	41.60 %
VW Used	4,250	13.46 %	5,406,858,389 JPY	8.39 %
VW Used (Prolonged)	2,222	7.04 %	1,081,736,539 JPY	1.68 %
Audi New	7,471	23.66 %	22,886,811,427 JPY	35.50 %
Audi Used	3,487	11.04 %	7,505,938,980 JPY	11.64 %
Audi Used (Prolonged)	552	1.75 %	607,430,944 JPY	0.94 %
Other	41	0.13 %	154,760,523 JPY	0.24 %
Total	31,572	100.00 %	64,461,717,997 JPY	100.00 %

Distribution by Product Type

Loan Type List

Loan Type	Description
100	Volkswagen Owner's Plan
100	Audi Owner's Plan
100	Lamborghini Auto Loan
100	Bentley Auto Loan
101	Twin Loan
105	Refinanced Volkswagen Solutions
106	Refinanced Volkswagen Das Welt Auto with refinance option *
106	Refinanced Audi S-Loan/ S-Loan Plus
106	Refinanced Lamborghini Hyper Premium Plan
106	Refinanced Bentley My Flying B
140	Volkswagen Solutions
150	Volkswagen Das Welt Auto with refinance option **
150	Audi S-Loan
150	Lamborghini Hyper Premium Plan
150	Bentley My Flying B
151	Audi S-Loan Plus

(*) The name was changed from "Refinanced Volkswagen GUC with refinance option" effective from 1 February 2012.

No other changes were made to auto loan agreements.

(**) The name was changed from "Volkswagen GUC with refinance option" effective from 1 February 2012.

No other changes were made to auto loan agreements.

Product Type

Loan Type	Number of Loans	Percentage of Loans	Outstanding Discounted Principal Balance	Percentage of Balance
100	4,688	14.85 %	6,897,578,212 JPY	10.70 %
101	1	0.00 %	146,006 JPY	0.00 %
105	2,141	6.78 %	1,058,192,817 JPY	1.64 %
106	633	2.00 %	630,974,666 JPY	0.98 %
140-VFJ	2,049	6.49 %	3,960,947,040 JPY	6.14 %
140-Dealer	10,345	32.77 %	21,165,598,361 JPY	32.83 %
150	11,008	34.87 %	28,547,338,760 JPY	44.29 %
151	707	2.24 %	2,200,942,135 JPY	3.41 %
Total	31,572	100.00 %	64,461,717,997 JPY	100.00 %

Credit Type

Credit Type	Number of Loans	Percentage of Loans	Outstanding Discounted Principal Balance	Percentage of Balance
Balloon Type Loan	24,109	76.36 %	55,874,826,296 JPY	86.68 %
Equal Instalment Type Loan	7,463	23.64 %	8,586,891,701 JPY	13.32 %
Total	31,572	100.00 %	64,461,717,997 JPY	100.00 %

Distribution by RV

Loan Type	Number of Loans	Percentage of Balance	Outstanding Discounted Principal Balance
100/101/105/106	7,463	13.32 %	8,586,891,701 JPY
140-VFJ (excl. balloon)		3.48 %	2,242,031,966 JPY
140-VFJ (balloon)		2.67 %	1,718,915,074 JPY
140-VFJ	2,049	6.14 %	3,960,947,040 JPY
140-Dealer (excl. balloon)		18.83 %	12,135,010,069 JPY
140-Dealer (balloon)		14.01 %	9,030,588,292 JPY
140-Dealer	10,345	32.83 %	21,165,598,361 JPY
150 (excl. balloon)		22.72 %	14,646,126,509 JPY
150 (balloon)		21.57 %	13,901,212,251 JPY
150	11,008	44.29 %	28,547,338,760 JPY
151 (excl. balloon)		1.27 %	820,669,662 JPY
151 (balloon)		2.14 %	1,380,272,473 JPY
151	707	3.41 %	2,200,942,135 JPY
Total	31,572	100.00 %	64,461,717,997 JPY

Type of Payment Portion	Percentage of Balance	Outstanding Discounted Principal Balance
Monthly Installment Portion	59.62 %	38,430,729,907 JPY
Balloon Portion	40.38 %	26,030,988,090 JPY
Total	100.00 %	64,461,717,997 JPY

Distribution by Brand New and Used
Audi

New or Used	Number of Loans	Percentage of Loans	Outstanding Discounted Principal Balance	Percentage of Balance
New	7,471	64.91 %	22,886,811,427 JPY	73.83 %
Used	4,039	35.09 %	8,113,369,924 JPY	26.17 %
Total	11,510	100.00 %	31,000,181,351 JPY	100.00 %

Bentley

New or Used	Number of Loans	Percentage of Loans	Outstanding Discounted Principal Balance	Percentage of Balance
New	9	60.00 %	72,697,375 JPY	66.04 %
Used	6	40.00 %	37,377,780 JPY	33.96 %
Total	15	100.00 %	110,075,155 JPY	100.00 %

Lamborghini

New or Used	Number of Loans	Percentage of Loans	Outstanding Discounted Principal Balance	Percentage of Balance
New	4	80.00 %	17,104,444 JPY	65.51 %
Used	1	20.00 %	9,004,905 JPY	34.49 %
Total	5	100.00 %	26,109,349 JPY	100.00 %

VW

New or Used	Number of Loans	Percentage of Loans	Outstanding Discounted Principal Balance	Percentage of Balance
New	13,549	67.67 %	26,818,181,195 JPY	80.52 %
Used	6,472	32.33 %	6,488,594,928 JPY	19.48 %
Total	20,021	100.00 %	33,306,776,123 JPY	100.00 %

OTHER

New or Used	Number of Loans	Percentage of Loans	Outstanding Discounted Principal Balance	Percentage of Balance
New	0	0.00 %	0 JPY	0.00 %
Used	21	100.00 %	18,576,019 JPY	100.00 %
Total	21	100.00 %	18,576,019 JPY	100.00 %

Distribution by Customer Type

Customer Type

Customer Type	Number of Loans	Percentage of Loans	Outstanding Discounted Principal Balance	Percentage of Balance
Retail	28,523	90.34 %	55,326,548,418 JPY	85.83 %
Corporate	3,049	9.66 %	9,135,169,579 JPY	14.17 %
Total	31,572	100.00 %	64,461,717,997 JPY	100.00 %

Distribution by Outstanding Discounted Principal Balance

Outstanding Discounted Principal Balance	Number of Loans	Percentage of Loans	Outstanding Discounted Principal Balance	Percentage of Balance
<= 500,000 JPY	2,580	8.17 %	793,098,937 JPY	1.23 %
500,001 JPY - 1,000,000 JPY	3,960	12.54 %	3,023,310,215 JPY	4.69 %
1,000,001 JPY - 1,500,000 JPY	5,289	16.75 %	6,669,474,289 JPY	10.35 %
1,500,001 JPY - 2,000,000 JPY	5,969	18.91 %	10,423,099,157 JPY	16.17 %
2,000,001 JPY - 2,500,000 JPY	4,703	14.90 %	10,520,406,575 JPY	16.32 %
2,500,001 JPY - 3,000,000 JPY	3,473	11.00 %	9,500,862,206 JPY	14.74 %
3,000,001 JPY - 3,500,000 JPY	2,092	6.63 %	6,743,973,089 JPY	10.46 %
3,500,001 JPY - 4,000,000 JPY	1,153	3.65 %	4,300,097,118 JPY	6.67 %
4,000,001 JPY - 4,500,000 JPY	712	2.26 %	3,011,854,061 JPY	4.67 %
4,500,001 JPY - 5,000,000 JPY	527	1.67 %	2,494,387,172 JPY	3.87 %
5,000,001 JPY - 6,000,000 JPY	596	1.89 %	3,245,615,984 JPY	5.03 %
6,000,001 JPY - 7,000,000 JPY	269	0.85 %	1,735,819,144 JPY	2.69 %
7,000,001 JPY - 8,000,000 JPY	132	0.42 %	981,223,801 JPY	1.52 %
8,000,001 JPY - 9,000,000 JPY	77	0.24 %	646,511,881 JPY	1.00 %
9,000,001 JPY - 10,000,000 JPY	40	0.13 %	371,984,368 JPY	0.58 %
>= 10,000,001 JPY	0	0.00 %	0 JPY	0.00 %
Total	31,572	100.00 %	64,461,717,997 JPY	100.00 %

Statistics

Minimum Outstanding Discounted Principal Balance	16,749 JPY
Maximum Outstanding Discounted Principal Balance	9,834,896 JPY
Average Outstanding Discounted Principal Balance	2,041,737 JPY

Distribution by Original Principal Amount

Original Principal Balance	Number of Loans	Percentage of Loans	Outstanding Discounted Principal Balance	Percentage of Balance
<= 500,000 JPY	561	1.78 %	139,684,634 JPY	0.22 %
500,001 JPY - 1,000,000 JPY	2,842	9.00 %	1,434,881,862 JPY	2.23 %
1,000,001 JPY - 1,500,000 JPY	3,439	10.89 %	3,239,340,596 JPY	5.03 %
1,500,001 JPY - 2,000,000 JPY	5,021	15.90 %	6,791,155,540 JPY	10.54 %
2,000,001 JPY - 2,500,000 JPY	5,066	16.05 %	8,861,176,458 JPY	13.75 %
2,500,001 JPY - 3,000,000 JPY	4,750	15.04 %	10,210,249,620 JPY	15.84 %
3,000,001 JPY - 3,500,000 JPY	3,340	10.58 %	8,494,557,440 JPY	13.18 %
3,500,001 JPY - 4,000,000 JPY	2,263	7.17 %	6,606,081,603 JPY	10.25 %
4,000,001 JPY - 4,500,000 JPY	1,255	3.98 %	4,231,201,624 JPY	6.56 %
4,500,001 JPY - 5,000,000 JPY	915	2.90 %	3,445,077,267 JPY	5.34 %
5,000,001 JPY - 6,000,000 JPY	986	3.12 %	4,288,848,141 JPY	6.65 %
6,000,001 JPY - 7,000,000 JPY	559	1.77 %	2,853,135,770 JPY	4.43 %
7,000,001 JPY - 8,000,000 JPY	254	0.80 %	1,567,666,105 JPY	2.43 %
8,000,001 JPY - 9,000,000 JPY	138	0.44 %	919,860,061 JPY	1.43 %
9,000,001 JPY - 10,000,000 JPY	70	0.22 %	532,620,210 JPY	0.83 %
>= 10,000,001 JPY	113	0.36 %	846,181,066 JPY	1.31 %
Total	31,572	100.00 %	64,461,717,997 JPY	100.00 %

Statistics

Minimum Original Principal Balance	100,000 JPY
Maximum Original Principal Balance	25,000,000 JPY
Average Original Principal Balance	2,663,004 JPY

Distribution by Interest Rate paid by the Obligor

Interest Rate paid by the Obligor	Number of Loans	Percentage of Loans	Outstanding Discounted Principal Balance	Percentage of Balance
< 0.900 %	2,137	6.77 %	4,484,784,508 JPY	6.96 %
0.900 % < 1.500 %	5,622	17.81 %	14,255,923,029 JPY	22.12 %
1.500 % < 2.000 %	10,113	32.03 %	23,468,028,143 JPY	36.41 %
2.000 % < 2.500 %	340	1.08 %	620,511,895 JPY	0.96 %
2.500 % < 3.000 %	6,166	19.53 %	12,136,490,734 JPY	18.83 %
3.000 % < 3.500 %	1,147	3.63 %	1,126,670,970 JPY	1.75 %
3.500 % < 4.000 %	6,000	19.00 %	8,277,449,029 JPY	12.84 %
4.000 % < 4.500 %	44	0.14 %	91,477,071 JPY	0.14 %
4.500 % < 5.000 %	3	0.01 %	382,618 JPY	0.00 %
5.000 % or more	0	0.00 %	0 JPY	0.00 %
Total	31,572	100.00 %	64,461,717,997 JPY	100.00 %

Statistics	
Minimum Interest Rate	0.00 %
Maximum Interest Rate	4.79 %
Weighted Average Interest Rate	2.05 %

Distribution by Original Term

Length of Original Term (months)	Number of Loans	Percentage of Loans	Outstanding Discounted Principal Balance	Percentage of Balance
6 - 12	267	0.85 %	78,461,007 JPY	0.12 %
13 - 18	205	0.65 %	69,848,342 JPY	0.11 %
19 - 24	1,963	6.22 %	1,232,863,723 JPY	1.91 %
25 - 30	112	0.35 %	77,795,425 JPY	0.12 %
31 - 36	13,263	42.01 %	29,296,772,463 JPY	45.45 %
37 - 42	79	0.25 %	81,451,910 JPY	0.13 %
43 - 48	1,582	5.01 %	2,401,505,128 JPY	3.73 %
49 - 54	30	0.10 %	44,274,342 JPY	0.07 %
55 - 60	13,213	41.85 %	29,189,636,549 JPY	45.28 %
61 - 66	18	0.06 %	30,950,303 JPY	0.05 %
67 - 72	650	2.06 %	1,386,928,568 JPY	2.15 %
73 - 84	190	0.60 %	571,230,237 JPY	0.89 %
Total	31,572	100.00 %	64,461,717,997 JPY	100.00 %

Statistics	
Minimum Original Term in months	6
Maximum Original Term in months	84
Weighted Average Original Term in months	48.26

Distribution by Remaining Term

Length of Remaining Term (months)	Number of Loans	Percentage of Loans	Outstanding Discounted Principal Balance	Percentage of Balance
<= 12	4,840	15.33 %	5,676,698,559 JPY	8.81 %
13 - 18	3,645	11.55 %	5,370,168,562 JPY	8.33 %
19 - 24	4,199	13.30 %	8,052,912,368 JPY	12.49 %
25 - 30	4,573	14.48 %	11,116,466,220 JPY	17.25 %
31 - 36	2,743	8.69 %	6,239,047,553 JPY	9.68 %
37 - 42	1,441	4.56 %	2,826,484,347 JPY	4.38 %
43 - 48	3,184	10.08 %	7,338,550,633 JPY	11.38 %
49 - 54	4,655	14.74 %	11,591,550,924 JPY	17.98 %
55 - 60	1,892	5.99 %	5,106,448,628 JPY	7.92 %
61 - 66	256	0.81 %	685,778,417 JPY	1.06 %
67 - 72	89	0.28 %	256,365,059 JPY	0.40 %
73 - 84	55	0.17 %	201,246,727 JPY	0.31 %
Total	31,572	100.00 %	64,461,717,997 JPY	100.00 %

Statistics	
Minimum Remaining Term in months	1
Maximum Remaining Term in months	80
Weighted Average Remaining Term in months	34.80

Distribution by Seasoning

Seasoning (months)	Number of Loans	Percentage of Loans	Outstanding Discounted Principal Balance	Percentage of Balance
<= 12	16,499	52.26 %	38,428,002,089 JPY	59.61 %
13 - 18	5,464	17.31 %	11,181,120,656 JPY	17.35 %
19 - 24	3,843	12.17 %	6,711,131,727 JPY	10.41 %
25 - 30	2,704	8.56 %	4,283,512,307 JPY	6.65 %
31 - 36	1,487	4.71 %	2,074,817,894 JPY	3.22 %
37 - 42	762	2.41 %	1,043,591,367 JPY	1.62 %
43 - 48	483	1.53 %	485,618,306 JPY	0.75 %
49 - 54	213	0.67 %	190,646,442 JPY	0.30 %
55 - 60	105	0.33 %	58,868,453 JPY	0.09 %
61 - 66	8	0.03 %	3,906,236 JPY	0.01 %
67 - 72	3	0.01 %	466,760 JPY	0.00 %
73 - 84	1	0.00 %	35,760 JPY	0.00 %
Total	31,572	100.00 %	64,461,717,997 JPY	100.00 %

Statistics	
Minimum Seasoning in months	2
Maximum Seasoning in months	83
Weighted Average Seasoning in months	13.46

Distribution by Type of Car
Type of Car

Type of Car	Number of Loans	Percentage of Loans	Outstanding Discounted Principal Balance	Percentage of Balance
New	21,033	66.62 %	49,794,794,441 JPY	77.25 %
Used	10,539	33.38 %	14,666,923,556 JPY	22.75 %
Total	31,572	100.00 %	64,461,717,997 JPY	100.00 %

Type of Car: Only Balloon Loans

Type of Car	Number of Loans	Percentage of Loans	Outstanding Discounted Principal Balance	Percentage of Balance
New	19,516	80.95 %	47,291,815,766 JPY	84.64 %
Used	4,593	19.05 %	8,583,010,530 JPY	15.36 %
Total	24,109	100.00 %	55,874,826,296 JPY	100.00 %

Type of Car: Only Equal Instalment Loans

Type of Car	Number of Loans	Percentage of Loans	Outstanding Discounted Principal Balance	Percentage of Balance
New	1,517	20.33 %	2,502,978,675 JPY	29.15 %
Used	5,946	79.67 %	6,083,913,026 JPY	70.85 %
Total	7,463	100.00 %	8,586,891,701 JPY	100.00 %

Distribution by Brand and Model

Make	Model	Number of Loans	Percentage of Loans	Outstanding Discounted Principal Balance	Percentage of Balance
Audi	A1	1,121	3.55 %	1,787,505,656 JPY	2.77 %
	A3	2,877	9.11 %	5,850,554,262 JPY	9.08 %
	A4	2,365	7.49 %	6,304,415,926 JPY	9.78 %
	A5	526	1.67 %	1,449,430,594 JPY	2.25 %
	A6	777	2.46 %	2,559,256,320 JPY	3.97 %
	A7	278	0.88 %	1,201,159,507 JPY	1.86 %
	A8	87	0.28 %	411,404,037 JPY	0.64 %
	S1	117	0.37 %	314,783,876 JPY	0.49 %
	S3	397	1.26 %	1,204,425,778 JPY	1.87 %
	S4	83	0.26 %	256,970,525 JPY	0.40 %
	S5	57	0.18 %	218,970,060 JPY	0.34 %
	S6	37	0.12 %	197,540,204 JPY	0.31 %
	S7	31	0.10 %	162,272,652 JPY	0.25 %
	S8	25	0.08 %	164,723,170 JPY	0.26 %
	RS3	52	0.16 %	252,683,701 JPY	0.39 %
	RS4	19	0.06 %	88,250,964 JPY	0.14 %
	RS5	13	0.04 %	68,968,340 JPY	0.11 %
	RS6	17	0.05 %	83,203,075 JPY	0.13 %
	RS7	12	0.04 %	85,311,826 JPY	0.13 %
	Q3	983	3.11 %	2,504,605,530 JPY	3.89 %
	Q5	637	2.02 %	2,163,715,229 JPY	3.36 %
	Q7	168	0.53 %	965,935,578 JPY	1.50 %
	RSQ3	19	0.06 %	94,256,300 JPY	0.15 %
	TT	801	2.54 %	2,544,386,736 JPY	3.95 %
R8	11	0.03 %	65,451,505 JPY	0.10 %	
AUDI OTHERS	0	0.00 %	0 JPY	0.00 %	
Subtotal		11,510	36.46 %	31,000,181,351 JPY	48.09 %
Bentley	ARNAGE	0	0.00 %	0 JPY	0.00 %
	AZURE	0	0.00 %	0 JPY	0.00 %
	BENTAYGA	1	0.00 %	9,456,675 JPY	0.01 %
	CONTINENTAL	13	0.04 %	92,237,592 JPY	0.14 %
	FLYING SPUR	1	0.00 %	8,380,888 JPY	0.01 %
	MULSANNE	0	0.00 %	0 JPY	0.00 %
	BENTLEY OTHERS	0	0.00 %	0 JPY	0.00 %
Subtotal		15	0.05 %	110,075,155 JPY	0.17 %
Lamborghini	AVENTADOR	1	0.00 %	3,472,535 JPY	0.01 %
	DIABLO	0	0.00 %	0 JPY	0.00 %
	GALLARDO	2	0.01 %	9,790,721 JPY	0.02 %
	HURACÁN	2	0.01 %	12,846,093 JPY	0.02 %
	MULCIELAGO	0	0.00 %	0 JPY	0.00 %
	LAMBORGHINI	0	0.00 %	0 JPY	0.00 %
	OTHERS	0	0.00 %	0 JPY	0.00 %
Subtotal		5	0.02 %	26,109,349 JPY	0.04 %
VW	BEETLE	2,044	6.47 %	3,348,410,323 JPY	5.19 %
	BORA	0	0.00 %	0 JPY	0.00 %
	EOS	0	0.00 %	0 JPY	0.00 %
	GOLF	7,957	25.20 %	13,850,462,096 JPY	21.49 %
	JETTA	18	0.06 %	8,515,622 JPY	0.01 %
	LUPO	0	0.00 %	0 JPY	0.00 %
	PASSAT	1,650	5.23 %	3,648,867,874 JPY	5.66 %
	POLO	4,208	13.33 %	5,632,044,909 JPY	8.74 %
	SCIROCCO	56	0.18 %	69,195,832 JPY	0.11 %
	SHARAN	701	2.22 %	1,526,381,896 JPY	2.37 %
	TIGUAN	512	1.62 %	888,212,621 JPY	1.38 %
	TOUAREG	101	0.32 %	288,724,386 JPY	0.45 %
	TOURAN	1,347	4.27 %	2,721,726,010 JPY	4.22 %
	UP	1,427	4.52 %	1,324,234,554 JPY	2.05 %
	VENTO	0	0.00 %	0 JPY	0.00 %
VW OTHERS	0	0.00 %	0 JPY	0.00 %	
Subtotal		20,021	63.41 %	33,306,776,123 JPY	51.67 %
Non VW Group Vehicles		21	0.07 %	18,576,019 JPY	0.03 %
Subtotal		21	0.07 %	18,576,019 JPY	0.03 %
Total		31,572	100.00 %	64,461,717,997 JPY	100.00 %

Geographic Distribution by Prefecture

Prefecture	Number of Loans	Percentage of Loans	Outstanding Discounted Principal Balance	Percentage of Balance
Tokyo	4,852	15.37 %	11,412,964,343 JPY	17.71 %
Kanagawa	3,152	9.98 %	6,551,868,871 JPY	10.16 %
Aichi	2,261	7.16 %	4,508,477,828 JPY	6.99 %
Saitama	2,066	6.54 %	4,249,247,274 JPY	6.59 %
Osaka	1,846	5.85 %	4,028,280,281 JPY	6.25 %
Chiba	1,392	4.41 %	2,729,181,117 JPY	4.23 %
Fukuoka	1,348	4.27 %	2,703,820,813 JPY	4.19 %
Hokkaido	1,174	3.72 %	2,618,648,344 JPY	4.06 %
Hyogo	1,236	3.91 %	2,577,810,167 JPY	4.00 %
Shizuoka	954	3.02 %	1,888,236,720 JPY	2.93 %
Ibaraki	952	3.02 %	1,856,583,761 JPY	2.88 %
Hiroshima	760	2.41 %	1,415,574,369 JPY	2.20 %
Tochigi	664	2.10 %	1,318,615,844 JPY	2.05 %
Kyoto	596	1.89 %	1,191,657,333 JPY	1.85 %
Gunma	608	1.93 %	1,070,867,653 JPY	1.66 %
Miyagi	517	1.64 %	976,066,880 JPY	1.51 %
Okayama	500	1.58 %	952,085,666 JPY	1.48 %
Gifu	487	1.54 %	903,789,237 JPY	1.40 %
Nagano	457	1.45 %	815,310,831 JPY	1.26 %
Mie	414	1.31 %	752,993,875 JPY	1.17 %
Niigata	384	1.22 %	681,979,327 JPY	1.06 %
Fukushima	339	1.07 %	611,107,489 JPY	0.95 %
Nara	283	0.90 %	564,895,494 JPY	0.88 %
Yamaguchi	298	0.94 %	547,830,806 JPY	0.85 %
Oita	285	0.90 %	529,479,049 JPY	0.82 %
Ishikawa	279	0.88 %	492,206,678 JPY	0.76 %
Kumamoto	266	0.84 %	476,525,161 JPY	0.74 %
Shiga	265	0.84 %	471,658,773 JPY	0.73 %
Yamanashi	228	0.72 %	453,887,570 JPY	0.70 %
Kagoshima	228	0.72 %	427,261,864 JPY	0.66 %
Toyama	233	0.74 %	413,647,760 JPY	0.64 %
Fukui	196	0.62 %	391,046,982 JPY	0.61 %
Yamagata	225	0.71 %	383,152,872 JPY	0.59 %
Kagawa	208	0.66 %	379,027,836 JPY	0.59 %
Wakayama	182	0.58 %	358,514,376 JPY	0.56 %
Nagasaki	155	0.49 %	318,663,153 JPY	0.49 %
Iwate	148	0.47 %	302,310,256 JPY	0.47 %
Tokushima	150	0.48 %	289,886,622 JPY	0.45 %
Miyazaki	141	0.45 %	271,728,885 JPY	0.42 %
Aomori	134	0.42 %	258,928,762 JPY	0.40 %
Saga	124	0.39 %	258,206,042 JPY	0.40 %
Ehime	154	0.49 %	251,788,694 JPY	0.39 %
Shimane	98	0.31 %	206,966,382 JPY	0.32 %
Akita	102	0.32 %	197,645,903 JPY	0.31 %
Tottori	114	0.36 %	195,754,440 JPY	0.30 %
Kouchi	72	0.23 %	132,711,411 JPY	0.21 %
Okinawa	45	0.14 %	72,824,203 JPY	0.11 %
Total	31,572	100.00 %	64,461,717,997 JPY	100.00 %

Distribution by Obligor Concentration
Distribution of Loan Contracts and Vehicles per Obligor

Contract Concentration	Number of Customers	Percentage of Customers	Number of Loans	Percentage of Loans	Outstanding Discounted Principal Balance	Percentage of Balance
1	30,456	97.01 %	30,456	96.47 %	61,731,654,552 JPY	95.76 %
2	878	2.80 %	1,028	3.26 %	2,488,848,217 JPY	3.86 %
3	55	0.18 %	78	0.25 %	221,987,711 JPY	0.34 %
4	5	0.02 %	7	0.02 %	10,716,521 JPY	0.02 %
5	1	0.00 %	2	0.01 %	5,704,873 JPY	0.01 %
6 - 10	1	0.00 %	1	0.00 %	2,806,123 JPY	0.00 %
11 or more	0	0.00 %	0	0.00 %	0 JPY	0.00 %
Total	31,396	100.00 %	31,572	100.00 %	64,461,717,997 JPY	100.00 %

Top 20 Obligor

Number	Number of Contracts	Outstanding Discounted Principal Balance	Percentage of Balance
1	2	15,630,965 JPY	0.02 %
2	2	14,662,823 JPY	0.02 %
3	2	12,950,613 JPY	0.02 %
4	2	12,228,098 JPY	0.02 %
5	2	12,099,612 JPY	0.02 %
6	2	11,306,894 JPY	0.02 %
7	2	11,265,809 JPY	0.02 %
8	2	10,485,034 JPY	0.02 %
9	2	10,270,467 JPY	0.02 %
10	2	10,246,218 JPY	0.02 %
11	2	10,007,033 JPY	0.02 %
12	2	9,911,211 JPY	0.02 %
13	1	9,834,896 JPY	0.02 %
14	2	9,783,826 JPY	0.02 %
15	2	9,737,476 JPY	0.02 %
16	1	9,651,770 JPY	0.01 %
17	1	9,624,490 JPY	0.01 %
18	1	9,584,971 JPY	0.01 %
19	1	9,566,642 JPY	0.01 %
20	1	9,509,135 JPY	0.01 %
Total 1 -20	34	218,357,983 JPY	0.34 %

Remarks:

Figures above are calculated based on each of the Sub-Servicers respectively and not across both of the Sub-Servicers.

Distribution by Contract Start Month

Origination Month	Number of Loans	Percentage of Loans	Outstanding Discounted Principal Balance	Percentage of Balance
04.2010	1	0.00 %	35,760 JPY	0.00 %
05.2010	0	0.00 %	0 JPY	0.00 %
06.2010	0	0.00 %	0 JPY	0.00 %
07.2010	0	0.00 %	0 JPY	0.00 %
08.2010	0	0.00 %	0 JPY	0.00 %
09.2010	0	0.00 %	0 JPY	0.00 %
10.2010	0	0.00 %	0 JPY	0.00 %
11.2010	0	0.00 %	0 JPY	0.00 %
12.2010	0	0.00 %	0 JPY	0.00 %
01.2011	0	0.00 %	0 JPY	0.00 %
02.2011	0	0.00 %	0 JPY	0.00 %
03.2011	0	0.00 %	0 JPY	0.00 %
04.2011	0	0.00 %	0 JPY	0.00 %
05.2011	0	0.00 %	0 JPY	0.00 %
06.2011	1	0.00 %	121,801 JPY	0.00 %
07.2011	1	0.00 %	248,671 JPY	0.00 %
08.2011	1	0.00 %	96,288 JPY	0.00 %
09.2011	0	0.00 %	0 JPY	0.00 %
10.2011	1	0.00 %	696,473 JPY	0.00 %
11.2011	1	0.00 %	571,953 JPY	0.00 %
12.2011	1	0.00 %	297,385 JPY	0.00 %
01.2012	3	0.01 %	1,240,150 JPY	0.00 %
02.2012	2	0.01 %	1,100,275 JPY	0.00 %
03.2012	1	0.00 %	419,270 JPY	0.00 %
04.2012	15	0.05 %	11,046,899 JPY	0.02 %
05.2012	23	0.07 %	10,104,381 JPY	0.02 %
06.2012	34	0.11 %	14,096,423 JPY	0.02 %
07.2012	20	0.06 %	12,064,062 JPY	0.02 %
08.2012	12	0.04 %	11,137,418 JPY	0.02 %
09.2012	39	0.12 %	41,972,934 JPY	0.07 %
10.2012	16	0.05 %	8,046,342 JPY	0.01 %
11.2012	30	0.10 %	28,769,578 JPY	0.04 %
12.2012	41	0.13 %	34,502,529 JPY	0.05 %
01.2013	42	0.13 %	42,965,349 JPY	0.07 %
02.2013	45	0.14 %	34,389,710 JPY	0.05 %
03.2013	71	0.22 %	67,348,346 JPY	0.10 %
04.2013	62	0.20 %	63,464,844 JPY	0.10 %
05.2013	90	0.29 %	82,256,885 JPY	0.13 %
06.2013	112	0.35 %	114,310,860 JPY	0.18 %
07.2013	82	0.26 %	78,780,606 JPY	0.12 %
08.2013	66	0.21 %	79,456,765 JPY	0.12 %
09.2013	113	0.36 %	123,199,370 JPY	0.19 %
10.2013	87	0.28 %	102,029,398 JPY	0.16 %
11.2013	97	0.31 %	129,078,829 JPY	0.20 %
12.2013	159	0.50 %	230,878,075 JPY	0.36 %
01.2014	120	0.38 %	180,410,764 JPY	0.28 %
02.2014	186	0.59 %	277,994,931 JPY	0.43 %
03.2014	304	0.96 %	418,715,812 JPY	0.65 %
04.2014	142	0.45 %	178,506,276 JPY	0.28 %
05.2014	227	0.72 %	313,145,096 JPY	0.49 %
06.2014	313	0.99 %	418,249,416 JPY	0.65 %
07.2014	260	0.82 %	394,396,705 JPY	0.61 %
08.2014	241	0.76 %	351,804,589 JPY	0.55 %
09.2014	482	1.53 %	769,740,445 JPY	1.19 %
10.2014	281	0.89 %	428,216,104 JPY	0.66 %
11.2014	369	1.17 %	567,458,032 JPY	0.88 %
12.2014	552	1.75 %	929,571,427 JPY	1.44 %
01.2015	417	1.32 %	641,718,566 JPY	1.00 %
02.2015	603	1.91 %	946,807,733 JPY	1.47 %
03.2015	1,078	3.41 %	1,812,471,386 JPY	2.81 %
04.2015	355	1.12 %	597,974,005 JPY	0.93 %
05.2015	577	1.83 %	978,119,369 JPY	1.52 %
06.2015	715	2.26 %	1,348,689,401 JPY	2.09 %
07.2015	551	1.75 %	967,033,958 JPY	1.50 %
08.2015	567	1.80 %	1,006,843,608 JPY	1.56 %
09.2015	812	2.57 %	1,625,111,454 JPY	2.52 %
10.2015	459	1.45 %	902,954,678 JPY	1.40 %
11.2015	537	1.70 %	1,089,477,692 JPY	1.69 %
12.2015	1,144	3.62 %	2,319,760,345 JPY	3.60 %
01.2016	1,008	3.19 %	2,119,991,903 JPY	3.29 %
02.2016	1,504	4.76 %	3,123,824,584 JPY	4.85 %
03.2016	2,280	7.22 %	4,904,975,501 JPY	7.61 %
04.2016	1,121	3.55 %	2,526,918,776 JPY	3.92 %
05.2016	1,472	4.66 %	3,296,778,386 JPY	5.11 %
06.2016	1,848	5.85 %	4,197,144,155 JPY	6.51 %
07.2016	1,561	4.94 %	3,568,286,669 JPY	5.54 %
08.2016	1,754	5.56 %	4,187,954,028 JPY	6.50 %
09.2016	2,475	7.84 %	5,910,095,195 JPY	9.17 %
10.2016	1,592	5.04 %	3,801,593,060 JPY	5.90 %
11.2016	2,111	6.69 %	5,330,206,014 JPY	8.27 %
12.2016	196	0.62 %	454,738,750 JPY	0.71 %
01.2017	89	0.28 %	249,311,555 JPY	0.39 %
02.2017	0	0.00 %	0 JPY	0.00 %
03.2017	0	0.00 %	0 JPY	0.00 %
Total	31,572	100.00 %	64,461,717,997 JPY	100.00 %

Distribution by Contract End Month

Maturity Month	Number of Loans	Percentage of Loans	Outstanding Discounted Principal Balance	Percentage of Balance
04.2017	133	0.42 %	74,006,297 JPY	0.11 %
05.2017	197	0.62 %	163,440,774 JPY	0.25 %
06.2017	273	0.86 %	213,940,611 JPY	0.33 %
07.2017	224	0.71 %	234,599,200 JPY	0.36 %
08.2017	243	0.77 %	229,544,526 JPY	0.36 %
09.2017	463	1.47 %	559,970,405 JPY	0.87 %
10.2017	268	0.85 %	285,803,242 JPY	0.44 %
11.2017	352	1.11 %	405,654,480 JPY	0.63 %
12.2017	507	1.61 %	670,751,791 JPY	1.04 %
01.2018	426	1.35 %	504,938,504 JPY	0.78 %
02.2018	625	1.98 %	758,448,203 JPY	1.18 %
03.2018	1,129	3.58 %	1,575,600,526 JPY	2.44 %
04.2018	390	1.24 %	523,423,324 JPY	0.81 %
05.2018	565	1.79 %	777,049,317 JPY	1.21 %
06.2018	791	2.51 %	1,200,711,989 JPY	1.86 %
07.2018	584	1.85 %	806,432,795 JPY	1.25 %
08.2018	506	1.60 %	773,951,198 JPY	1.20 %
09.2018	809	2.56 %	1,288,599,939 JPY	2.00 %
10.2018	446	1.41 %	681,405,155 JPY	1.06 %
11.2018	573	1.81 %	861,206,295 JPY	1.34 %
12.2018	778	2.46 %	1,498,551,962 JPY	2.32 %
01.2019	496	1.57 %	1,019,771,059 JPY	1.58 %
02.2019	708	2.24 %	1,428,983,185 JPY	2.22 %
03.2019	1,198	3.79 %	2,562,994,712 JPY	3.98 %
04.2019	520	1.65 %	1,243,670,949 JPY	1.93 %
05.2019	697	2.21 %	1,605,724,236 JPY	2.49 %
06.2019	915	2.90 %	2,190,335,401 JPY	3.40 %
07.2019	649	2.06 %	1,583,707,713 JPY	2.46 %
08.2019	708	2.24 %	1,740,226,290 JPY	2.70 %
09.2019	1,084	3.43 %	2,752,801,631 JPY	4.27 %
10.2019	697	2.21 %	1,727,014,326 JPY	2.68 %
11.2019	936	2.96 %	2,531,619,103 JPY	3.93 %
12.2019	307	0.97 %	582,953,165 JPY	0.90 %
01.2020	213	0.67 %	398,140,719 JPY	0.62 %
02.2020	254	0.80 %	416,456,769 JPY	0.65 %
03.2020	336	1.06 %	582,863,471 JPY	0.90 %
04.2020	135	0.43 %	235,676,352 JPY	0.37 %
05.2020	242	0.77 %	434,061,447 JPY	0.67 %
06.2020	248	0.79 %	495,924,385 JPY	0.77 %
07.2020	211	0.67 %	434,458,806 JPY	0.67 %
08.2020	265	0.84 %	533,435,035 JPY	0.83 %
09.2020	340	1.08 %	692,928,322 JPY	1.07 %
10.2020	238	0.75 %	509,155,797 JPY	0.79 %
11.2020	294	0.93 %	641,022,662 JPY	0.99 %
12.2020	394	1.25 %	899,984,195 JPY	1.40 %
01.2021	498	1.58 %	1,143,614,439 JPY	1.77 %
02.2021	726	2.30 %	1,724,264,604 JPY	2.67 %
03.2021	1,034	3.28 %	2,420,508,936 JPY	3.75 %
04.2021	504	1.60 %	1,234,971,234 JPY	1.92 %
05.2021	678	2.15 %	1,597,392,637 JPY	2.48 %
06.2021	729	2.31 %	1,834,700,553 JPY	2.85 %
07.2021	758	2.40 %	1,844,593,506 JPY	2.86 %
08.2021	832	2.64 %	2,091,777,836 JPY	3.24 %
09.2021	1,154	3.66 %	2,988,115,158 JPY	4.64 %
10.2021	737	2.33 %	1,949,902,020 JPY	3.02 %
11.2021	944	2.99 %	2,613,605,395 JPY	4.05 %
12.2021	106	0.34 %	275,333,716 JPY	0.43 %
01.2022	56	0.18 %	165,422,924 JPY	0.26 %
02.2022	18	0.06 %	39,423,411 JPY	0.06 %
03.2022	31	0.10 %	62,761,162 JPY	0.10 %
04.2022	22	0.07 %	52,770,040 JPY	0.08 %
05.2022	28	0.09 %	73,883,291 JPY	0.11 %
06.2022	40	0.13 %	111,006,051 JPY	0.17 %
07.2022	39	0.12 %	94,790,198 JPY	0.15 %
08.2022	80	0.25 %	230,686,402 JPY	0.36 %
09.2022	47	0.15 %	122,642,435 JPY	0.19 %
10.2022	26	0.08 %	61,262,756 JPY	0.10 %
11.2022	26	0.08 %	68,830,760 JPY	0.11 %
12.2022	17	0.05 %	54,399,996 JPY	0.08 %
01.2023	6	0.02 %	22,772,060 JPY	0.04 %
02.2023	9	0.03 %	35,042,688 JPY	0.05 %
03.2023	5	0.02 %	14,056,799 JPY	0.02 %
04.2023	6	0.02 %	20,295,522 JPY	0.03 %
05.2023	11	0.03 %	39,879,544 JPY	0.06 %
06.2023	10	0.03 %	34,369,849 JPY	0.05 %
07.2023	2	0.01 %	6,160,870 JPY	0.01 %
08.2023	6	0.02 %	20,682,787 JPY	0.03 %
09.2023	12	0.04 %	46,889,283 JPY	0.07 %
10.2023	5	0.02 %	20,598,892 JPY	0.03 %
11.2023	3	0.01 %	12,369,980 JPY	0.02 %
Total	31,572	100.00 %	64,461,717,997 JPY	100.00 %

Distribution by Monthly Payment

Monthly Payment	Number of Loans	Percentage of Loans	Outstanding Discounted Principal Balance	Percentage of Balance
<= 10,000 JPY	1,554	4.92 %	1,914,828,120 JPY	2.97 %
10,001 JPY - 20,000 JPY	5,894	18.67 %	8,172,039,523 JPY	12.68 %
20,001 JPY - 30,000 JPY	8,434	26.71 %	13,556,923,434 JPY	21.03 %
30,001 JPY - 40,000 JPY	6,210	19.67 %	12,443,904,835 JPY	19.30 %
40,001 JPY - 50,000 JPY	3,642	11.54 %	8,513,180,393 JPY	13.21 %
50,001 JPY - 60,000 JPY	2,123	6.72 %	5,701,644,820 JPY	8.85 %
60,001 JPY - 70,000 JPY	1,135	3.59 %	3,470,717,227 JPY	5.38 %
70,001 JPY - 80,000 JPY	633	2.00 %	2,121,790,661 JPY	3.29 %
80,001 JPY - 90,000 JPY	511	1.62 %	1,803,263,063 JPY	2.80 %
90,001 JPY - 100,000 JPY	388	1.23 %	1,561,774,907 JPY	2.42 %
100,001 JPY - 110,000 JPY	256	0.81 %	1,058,202,832 JPY	1.64 %
110,001 JPY - 120,000 JPY	190	0.60 %	900,471,197 JPY	1.40 %
120,001 JPY - 130,000 JPY	153	0.48 %	738,198,645 JPY	1.15 %
130,001 JPY - 140,000 JPY	109	0.35 %	572,889,087 JPY	0.89 %
140,001 JPY - 150,000 JPY	67	0.21 %	373,725,451 JPY	0.58 %
>= 150,001 JPY	273	0.86 %	1,558,163,802 JPY	2.42 %
Total	31,572	100.00 %	64,461,717,997 JPY	100.00 %

Distribution by Bonus Payment

Bonus Payment	Number of Loans	Percentage of Loans	Outstanding Discounted Principal Balance	Percentage of Balance
No Bonus Payment	19,067	60.39 %	38,252,620,572 JPY	59.34 %
1 JPY - 25,000 JPY	291	0.92 %	445,770,349 JPY	0.69 %
25,001 JPY - 50,000 JPY	3,095	9.80 %	5,135,780,868 JPY	7.97 %
50,001 JPY - 75,000 JPY	1,064	3.37 %	1,910,863,521 JPY	2.96 %
75,001 JPY - 100,000 JPY	4,341	13.75 %	8,781,097,138 JPY	13.62 %
100,001 JPY - 125,000 JPY	543	1.72 %	1,198,284,892 JPY	1.86 %
125,001 JPY - 150,000 JPY	1,657	5.25 %	4,094,362,893 JPY	6.35 %
150,001 JPY - 175,000 JPY	189	0.60 %	495,739,542 JPY	0.77 %
175,001 JPY - 200,000 JPY	805	2.55 %	2,297,508,358 JPY	3.56 %
200,001 JPY - 225,000 JPY	50	0.16 %	158,734,423 JPY	0.25 %
225,001 JPY - 250,000 JPY	197	0.62 %	643,159,002 JPY	1.00 %
250,001 JPY - 275,000 JPY	21	0.07 %	71,868,349 JPY	0.11 %
275,001 JPY - 300,000 JPY	160	0.51 %	568,530,804 JPY	0.88 %
300,001 JPY - 325,000 JPY	7	0.02 %	31,159,603 JPY	0.05 %
325,001 JPY - 350,000 JPY	35	0.11 %	144,158,273 JPY	0.22 %
350,001 JPY - 375,000 JPY	5	0.02 %	23,431,199 JPY	0.04 %
375,001 JPY - 400,000 JPY	17	0.05 %	76,457,901 JPY	0.12 %
400,001 JPY - 425,000 JPY	0	0.00 %	0 JPY	0.00 %
425,001 JPY - 450,000 JPY	7	0.02 %	31,571,666 JPY	0.05 %
450,001 JPY - 475,000 JPY	0	0.00 %	0 JPY	0.00 %
475,001 JPY - 500,000 JPY	15	0.05 %	64,340,610 JPY	0.10 %
500,001 JPY or more	6	0.02 %	36,278,034 JPY	0.06 %
Total	31,572	100.00 %	64,461,717,997 JPY	100.00 %

Distribution by Motor Type

Motor Type	Number of Loans	Percentage of Loans	Outstanding Discounted Principal Balance	Percentage of Balance
EA 189	0	0.00 %	0 JPY	0.00 %
Other	31,572	100.00 %	64,461,717,997 JPY	100.00 %
Total	31,572	100.00 %	64,461,717,997 JPY	100.00 %

Disclaimer

This presentation contains forward-looking statements and information on the business development of the Volkswagen Group. These statements may be spoken or written and can be recognized by terms such as "expects", "anticipates", "intends", "plans", "believes", "seeks", "estimates", "will", or words with similar meaning. These statements are based on assumptions relating to the development of the economies of individual countries, and in particular of the automotive industry, which we have made on the basis of the information available to us and which we consider to be realistic at the time of going to press. The estimates given involve a degree of risk, and the actual developments may differ from those forecast.

Consequently, any unexpected fall in demand or economic stagnation in our key sales markets, such as in Western Europe (and especially Germany) or in the USA, Brazil or China, will have a corresponding impact on the development of our business. The same applies in the event of a significant shift in current exchange rates relative to the US dollar, sterling, yen, Brazilian real, Chinese renminbi and Czech koruna.

If any of these or other risks occur, or if the assumptions underlying any of these statements prove incorrect, the actual results may significantly differ from those expressed or implied by such statements.

We do not update forward-looking statements retrospectively. Such statements are valid on the date of publication and can be superceded.

This information does not constitute an offer to exchange or sell or an offer to exchange or buy any securities.