

Deal Name: Driver Japan five

Originator: Volkswagen Financial Services Japan Ltd.
Gotenyama Trust Tower 17F
7-35 Kitashinagawa 4-chome, Shinagawa-ku
Tokyo 140-0001, Japan

Reporting Entity: Volkswagen Financial Services Japan Ltd.
Treasury Dept.
Gotenyama Trust Tower 17F
7-35 Kitashinagawa 4-chome, Shinagawa-ku
Tokyo 140-0001, Japan
Tel No.: +81(0)3-5792-7261
Fax No.: +81(0)3-3280-7365
E-mail: vwfsjp.abs@vwfs.com

**Trustor of the First Trust:
Servicer:** Volkswagen Financial Services Japan Ltd.

**Trustee of the First Trust:
Trustee of the Second Trust:** Shinsei Trust & Banking Co., Ltd.
Nihonbashi Muromachi Nomura Building
4-3, Nihonbashi-muromachi 2-chome, Chuo-ku,
Tokyo 103-0022, Japan
Trust Management Division
Tel No.: +81(0)3-6880-6300
Fax No.: +81(0)3-4560-2756
E-mail: OpsKinsai@shinseitrust.com



Contents

Page	Tables of Contents
1	Front Page
2	Contents
3	Deal Overview
4	Deal Overview: Counterparties I
5	Deal Overview: Counterparties II
6	Information regarding the TBI and ABL to the Second Trust
7	Pool Information
8	Available Distribution
9	Waterfall
10	Credit Enhancement
11	Cumulative Gross Loss Ratio & Performance Trigger
12	Cumulative Gross Loss Ratio & Performance Trigger (Chart)
13	Default & Delinquencies
14	Run Out Schedule (Previous)
15	Run Out Schedule
16	Expected Amortization to the Second Trust
17	Sub-Servicer
18	Brand
19	New and Used
20	Product Type
21	RV
22	Brand New and Used
23	Customer Type
24	Outstanding Discounted Principal Balance
25	Original Principal Amount
26	Interest Rate paid by the Obligor
27	Original Term
28	Remaining Term
29	Seasoning
30	Type of Car
31	Brand and Model
32	Geographic Dist. by Prefecture
33	Obligor Concentration
34	Contract Start Month
35	Contract End Month
36	Monthly payment
37	Bonus payment
38	Mortor Type

Deal Overview

Cut Off Date:	2016/02/10		
Trust Commencement Date:	2016/02/24	Legal Maturity of the First Trust:	2024/06/27
Monthly Period:	2017/05/11	to	2017/06/10
Reporting Date:	2017/06/16		
Reporting Frequency:	monthly		
Period No.:	16		
Remittance Date:	2017/06/22		
Advance Payment Date:	2017/06/22		
Cash Adjustment Date:	2017/06/22		
Additional Entrustment Date:	2017/06/26		
Trust Calculation Date:	2017/06/26		
Trust Calculation Period:	2017/05/26	to	2017/06/26
First Trust Payment Date:	2017/06/27		
Second Trust Payment Date:	2017/06/28		
Interest Calculation Period:	2017/05/30	to	2017/06/28
Next Reporting Date:	2017/07/18		

Pool information at the Initial Cut off Date

	Number of Contracts	Outstanding Discounted Principal Balance	Outstanding Nominal Balance
Outstanding Pool	31,976	64,176,234,995 JPY	66,824,671,200 JPY

Credit Type	Percentage of Loans	Outstanding Discounted Principal Balance	Percentage of Balance
Balloon	75.37 %	53,826,542,156 JPY	83.87 %
Equal Instalment Loan	24.63 %	10,349,692,839 JPY	16.13 %
Total	100.00 %	64,176,234,995 JPY	100.00 %

Type of Car	Percentage of Loans	Outstanding Discounted Principal Balance	Percentage of Balance
New	72.19 %	50,995,472,631 JPY	79.46 %
Used	27.81 %	13,180,762,364 JPY	20.54 %
Total	100.00 %	64,176,234,995 JPY	100.00 %

Deal Overview: Counterparties I

Joint Lead Managers:

Merrill Lynch Japan Securities Co., Ltd.
 Nihonbashi 1-chome Building,
 1-4-1, Nihonbashi,
 Chuo-ku,
 Tokyo 103-8230, Japan

Shinsei Securities Co., Ltd.
 Nihonbashi Muromachi Nomura Building,
 2-4-3, Nihonbashi-muromachi,
 Chuo-ku,
 Tokyo 103-0022, Japan

Trust Management Account Bank:

The Bank of Tokyo-Mitsubishi UFJ, Ltd.
 4-2 Toranomon 1-chome,
 Minato-ku
 Tokyo 105-0001, Japan

Rating								
Moody's			Fitch			R&I		
Long Term	Short Term	Outlook	Long Term	Short Term	Outlook	Long Term	Short Term	Outlook
n.a.	n.a.	n.a.	A	F1	Stable	n.a.	n.a.	n.a.
n.a.	n.a.	n.a.	n.a.	n.a.	n.a.	n.a.	n.a.	n.a.
A1	P-1	Stable	A	F1	Stable	AA-	a-1+	Stable

Originator:

Trustor of the First Trust:

Servicer:

Volkswagen Financial Services Japan Ltd.
 Gotenyama Trust Tower 17F
 7-35 Kitashinagawa 4-chome, Shinagawa-ku
 Tokyo 140-0001, Japan

Trustee of the First Trust:

Trustee of the Second Trust:

Shinsei Trust & Banking Co., Ltd.
 Attn.: Driver Japan five
 Trust Management Division

ABL Lender to the First Trust:

Trustor of the Second Trust:

Merrill Lynch Japan Securities Co., Ltd.

Seller of the Trust Beneficial

Interest of the Second Trust

Merrill Lynch Japan Securities Co., Ltd.
Shinsei Securities Co., Ltd.

Deal Overview: Counterparties II

Rating Agencies:

Moody's SF Japan K.K.

Attn.: Driver Japan five
 Structure Finance Group Monitoring Division
 5-1 Atago 2-chome, Minato-ku
 Tokyo 105-6220, Japan
 E-mail: monitor.msfi@moodys.com

Fitch Ratings Japan Limited

Attn.: Driver Japan five
 Structured Finance
 Kojimachi Crystal City East Wing 3rd Floor,
 4-8 Kōjimachi, Chiyoda-ku,
 Tokyo 102-0083, Japan
 E-mail: tokyo.surveillance@fitchratings.com

Rating and Investment Information, Inc.

Attn.: Monitoring Group Department:Structured Finance Department
 Structured Finance Department
 TERRACE SQUARE, 3-22,
 Kanda Nishikicho, Chiyoda-ku,
 Tokyo 101-0054, Japan
 E-mail: sfmonitor@r-i.co.jp

Rating of VW

Volkswagen Financial Services AG

Volkswagen AG

Rating								
Moody's			Fitch			R&I		
Short Term	Long Term	Outlook	Short Term	Long Term	Outlook	Short Term	Long Term	Outlook
P-1	A2	Negative	n.a.	n.a.	n.a.	n.a.	n.a.	n.a.
P-2	A3	Negative	F2	BBB+	Negative	n.a.	n.a.	n.a.

Information regarding Trust Beneficial Interest of the Second Trust & Asset Backed Loan to the Second Trust
Rating Details
Rating at Issue Date

	<u>TBI</u>	<u>ABL</u>
Moody's	Aaa(sf)	Aaa(sf)
Fitch	AAAsf	AAAsf
R&I	AAA	AAA

Current Rating

	<u>TBI</u>	<u>ABL</u>
Moody's	Aaa(sf)	Aaa(sf)
Fitch	AAAsf	AAAsf
R&I	AAA	AAA

Information on TBI & ABL

	<u>TBI</u>	<u>ABL</u>
Initial Balance	31,000,000,000 JPY	29,000,000,000 JPY
Expected Maturity Date	2019/12/30	2019/12/30
Legal Maturity of the Second Trust	2024/06/28	2024/06/28
Payment Dates	28th	28th
Business Day Convention	Modified Following	Modified Following
Listing	None	—

Information on Interest

	<u>TBI</u>	<u>ABL</u>
Fixed/ Floating	Fixed	Fixed
Current Coupon	0.19%	0.19%
Day Count Convention	30/360	30/360

Selling Restriction

The holders of the Beneficial Interest and the ABL Lenders* are prohibited from dividing, assigning, pledging or creating any other security interest over any of the Beneficial Interest and the Asset Backed Loans without the prior written approval of the Trustee of the Second Trust.

(*)The holders of the Beneficial Interest and the ABL Lenders are limited to specified investors (*tokutei toushika*) as defined under Paragraph 31 of Article 2 of the Financial Instruments and Exchange Act (Law no.25 of 1948 as amended).

Clean-Up Call

VWFS Japan as the Trustor of the First Trust has a right at its option to exercise a clean-up call to repurchase of all, but not part, of the outstanding Auto Loan Receivables from the Trustee of the First Trust on any Trust Calculation Date, the Discounted Principal Balance of all outstanding Auto Loan Receivables is expected to be less than ten percent (10%) of the Discounted Principal Balance of the Initial Auto Loan Receivables as of the Initial Cut-off Date after the distribution pursuant to Article 18.1 of the First Trust Agreement on the immediately following First Trust Payment Date.

Pool Information
Pool Balance on Initial Cut-Off Date

Status	Number of Contracts	Outstanding Discounted Principal Balance
Normal	31,976	64,176,234,995 JPY
Cancellation	0	0 JPY
Early Termination	0	0 JPY
Defaulted Receivables	0	0 JPY
Matured	0	0 JPY
Refinance Option	0	0 JPY
Repurchase	0	0 JPY
Total	31,976	64,176,234,995 JPY

Pool Balance before entrustment of Additional Auto Loan Receivables

Status	Number of Contracts on previous EoP	Outstanding Discounted Principal Balance on previous EoP	Number of Contracts "as Collections" during the relevant Monthly Period*	Outstanding Discounted Principal Balance "as Collections" during the relevant Monthly Period*	Number of Contracts EoP before entrustment of Additional Auto Loan Receivables	Outstanding Discounted Principal Balance EoP before entrustment of Additional Auto Loan Receivables
Normal	34,909	58,033,987,686 JPY	34,059	1,130,625,795 JPY	34,059	55,819,415,473 JPY
Cancellation	0	0 JPY	0	0 JPY	0	0 JPY
Early Termination	0	0 JPY	417	725,349,318 JPY	0	0 JPY
Defaulted Receivables	0	0 JPY	2	3,253,374 JPY	0	0 JPY
Matured	0	0 JPY	345	229,415,853 JPY	0	0 JPY
Refinance Option	0	0 JPY	86	125,927,873 JPY	0	0 JPY
Repurchase	0	0 JPY	0	0 JPY	0	0 JPY
Total	34,909	58,033,987,686 JPY	34,909	2,214,572,213 JPY	34,059	55,819,415,473 JPY

Pool Balance after entrustment of Additional Auto Loan Receivables

Status	Number of Contracts EoP before entrustment of Additional Auto Loan Receivables	Outstanding Discounted Principal Balance EoP before entrustment of Additional Auto Loan Receivables	Number of Contracts of Additional Auto Loan Receivables	Outstanding Discounted Principal Balance of Additional Auto Loan Receivables	Number of Contracts EoP after entrustment of Additional Auto Loan Receivables	Outstanding Discounted Principal Balance EoP after entrustment of Additional Auto Loan Receivables
Normal	34,059	55,819,415,473 JPY	0	0 JPY	34,059	55,819,415,473 JPY
Cancellation	0	0 JPY	0	0 JPY	0	0 JPY
Early Termination	0	0 JPY	0	0 JPY	0	0 JPY
Defaulted Receivables	0	0 JPY	0	0 JPY	0	0 JPY
Matured	0	0 JPY	0	0 JPY	0	0 JPY
Refinance Option	0	0 JPY	0	0 JPY	0	0 JPY
Repurchase	0	0 JPY	0	0 JPY	0	0 JPY
Total	34,059	55,819,415,473 JPY	0	0 JPY	34,059	55,819,415,473 JPY

Limits on Eligibility Criteria

Status Limits on Eligibility Criteria (v) (including Additional Entrustment)	Current Exposure in %	Limits in % of the aggregate Discounted Principal Balance of the Auto Loan Receivables outstanding	Status
(i) on Used Purchased Vehicle	20.38 %	35 %	-*
(ii) on Non-VW Vehicles	0.04 %	5 %	-*
(iii) on Balloon Payment	50.41 %	50 %	-*

(*) not applicable since the Revolving Period ended

Outstanding Balances

Monthly Period: from 2017/05/11 to 2017/06/10
Reporting Date: 2017/06/16
Trust Calculation Date: 2017/06/26

Outstanding Balances

	Number of Contracts	Aggregate Amount of the Discounted Principal Balance	Aggregate Amount of the Nominal Balance
Balance on the previous EoP	34,909	58,033,987,686 JPY	59,864,895,600 JPY
Balance after counting on the Collections during the relevant	34,059	55,819,415,473 JPY	57,528,208,200 JPY
Balance of Additional Auto Loan Receivables	0	0 JPY	0 JPY
Aggregate Amount of Auto Loan Receivables	34,059	55,819,415,473 JPY	57,528,208,200 JPY

Collections

	Number of Contracts	Aggregate Amount of the Discounted Principal Balance	Aggregate Amount of the Nominal Balance
Collections: Amortization of current contracts	34,059	1,130,625,795 JPY	1,232,311,900 JPY
Collections: Cancellation	0	0 JPY	0 JPY
Collections: Early Termination	417	725,349,318 JPY	726,851,672 JPY
Collections: Defaulted Receivables	2	3,253,374 JPY	3,267,470 JPY
Collections: Matured	345	229,415,853 JPY	229,722,300 JPY
Collections: Refinance Option	86	125,927,873 JPY	126,090,000 JPY
Collections: Repurchase	0	0 JPY	0 JPY
Sum	34,909	2,214,572,213 JPY	2,318,243,342 JPY

Available Distribution Amount

	Number of Contracts	Aggregate Amount of the Nominal Balance
(a) the Collections for the Monthly Period with respect to such Trust Calculation Date	34,909	2,318,243,342 JPY
(b) drawings from the Cash Collateral Ledger in accordance with Article 18.3 of the First Trust Agreement	0	0 JPY
(c) net investment earnings from Eligible Investments	0	0 JPY
(d) net proceeds from the sale or disposal of the Trust Assets of the First Trust	0	0 JPY
(e) any amount which is carried over from the immediately preceding Trust Calculation Date	0	0 JPY
Sum	34,909	2,318,243,342 JPY

Waterfall

There is no distinction between principal and interest, and all collections go through a single priority of payments			
		Payment	Remaining Amount
Available Distribution Amount	plus	2,318,243,342 JPY	2,318,243,342 JPY
(a) an amount necessary for the payment of all taxes and public charges to be paid to the relevant public authority by the immediately following First Trust Payment Date.	less	0 JPY	2,318,243,342 JPY
(b) an amount necessary for the payment of all Fees for the Trustee of the First Trust to be paid to the Trustee of the First Trust by the immediately following First Trust Payment Date.	less	391,728 JPY	2,317,851,614 JPY
(c) an amount necessary for the payment of the Servicing Fee to be paid to the Servicer by the immediately following First Trust Payment Date.	less	52,230,588 JPY	2,265,621,026 JPY
(d) an amount necessary for the payment of the Trust Expenses of the First Trust as provided in Article 23.1 (including the Rating Fees, Costs of the Second Trust and those fees not otherwise covered by (b) or (c) above) to be paid to the relevant party by the immediately following First Trust Payment Date (including any amounts advanced by the Trustee of the First Trust pursuant to Article 23.3)	less	400,476 JPY	2,265,220,550 JPY
(e) an amount necessary for the payment of overdue and unpaid interest on the Asset Backed Loans to the First Trust (if any) to be paid to the Trustee of the Second Trust by the immediately following First Trust Payment Date.	less	0 JPY	2,265,220,550 JPY
(f) an amount necessary for the payment to the Trustee of the Second Trust of interest on the Asset Backed Loan to the First Trust accruing during the relevant Interest Calculation Period	less	8,283,912 JPY	2,256,936,638 JPY
(g) an amount necessary to top up the balance thereof until it is equal to the Cash Collateral Ledger Target Balance	less	0 JPY	2,256,936,638 JPY
(h) (i) prior to the expiration of the Revolving Period: an amount necessary for the redemption of any Additional Senior Beneficial Interest;	less	2,256,936,638 JPY	0 JPY
(ii) following the expiration of the Revolving Period and prior to the occurrence of an Early Amortization Event, an amount necessary for the payment to the Trustee of the Second Trust of the Asset Backed Loan Principal Payment Amount for the relevant First Trust Payment Date.			
(iii) following the occurrence of the Early Amortization Event, an amount necessary for the payment to the Trustee of the Second Trust of the remaining principal balance of the Asset Backed Loan to the First Trust.			
(i) an amount necessary for the payment to the Trustee of the First Trust of any Indemnified Amounts which are not compensated by the Trustor of the First Trust	less	0 JPY	0 JPY
(j) an amount necessary for the payment to the Subordinated Beneficiary of the Subordinated Beneficial Principal Payment Amount for the relevant First Trust Payment Date.	less	0 JPY	0 JPY
(k) (i) prior to the expiration of the Revolving Period, then (x) if a transfer is made under (j) above, such remaining amount will be transferred to the Expenses Distribution Ledger for payment to the Subordinated Beneficiary as a payment of earnings on the Subordinated Beneficial Interest, and such payment shall be made on the First Trust Payment Date immediately following such Trust Calculation Date or (y) if no transfer is made under (j) above, such remaining amount will be carried forward to the next Trust Calculation Date.	less	0 JPY	0 JPY
(ii) following the expiration of the Revolving Period and prior to the occurrence of an Early Amortization Event, then such remaining amount will be transferred to the Expenses Distribution Ledger for payment to the Subordinated Beneficiary as a payment of earnings on the Subordinated Beneficial Interest, and such payment shall be made on the First Trust Payment Date immediately following such Trust Calculation Date.			
(iii) following the occurrence of an Early Amortization Event, the remaining amount in the Trust Collection Ledger will be carried forward to the next Trust Calculation Date.			

Credit Enhancement

Subordinated Principal Balance as of the relevant First Trust Payment Date

	Percentage of Aggregate Discounted Principal Balance	Value
(i) the aggregate amount of the Discounted Principal Balance of all Auto Loan Receivables outstanding		55,819,415,473 JPY
(ii) Asset Backed Loan Principal Balance on the relevant First Trust Payment Date		50,062,512,755 JPY
Overcollateralization (= (i) - (ii))	10.31 %	5,756,902,718 JPY
Trust Collection Ledger which is carried over from the immediately preceding Trust Calculation Date	0.00 %	0 JPY
The amount in the Cash Collateral Ledger	0.68 %	380,000,000 JPY
Subordinated Principal Balance	10.99 %	6,136,902,718 JPY

Trust Management Account (TMA)

	in JPY	+/-	in JPY (previous)
Initial Balance on Cash Entrustment Date	380,000,000 JPY		0 JPY
Outstanding Balance on First Trust Payment Date	380,000,000 JPY	0 JPY	380,000,000 JPY
(a) Expenses Distribution Ledger	0 JPY	0 JPY	0 JPY
(b) Trust Collection Ledger	0 JPY	0 JPY	0 JPY
(c) Cash Collateral Ledger	380,000,000 JPY	0 JPY	380,000,000 JPY
Cash Collateral Ledger Target Balance	380,000,000 JPY		

Calculation of Credit Enhancement

Driver Japan five's Credit Enhancement consists of the items listed above in the Subordinated Principal Balance as of the relevant date of determination (immediately following the First Trust Payment Date). The result provides an absolute value, which will be applied to the (amortized) Aggregate Discounted Principal Balance as of the end of the relevant date.

The transaction has a Revolving Period of 12 months until February 2017.

Asset Backed Loan Overcollateralization Percentage is (i) prior to the expiration of the Revolving Period, 8.5%, and (ii) following the expiration of the Revolving Period, 11.5%; provided, in each case no Credit Enhancement Increase Condition shall be in effect. After a Level 1 Credit Enhancement Increase Condition in effect, 17% and after a Level 2 Credit Enhancement Increase Condition is in effect, 100%.

Cumulative Gross Loss & Cumulative Repurchased Receivables

Cumulative Defaulted Receivables

	Number of Contracts	Write Offs
Beginning of Period	48	121,867,059 JPY
Defaulted Receivables	2	3,253,374 JPY
End of Period	50	125,120,433 JPY

Cumulative Gross Loss Ratio

The sum of the Discounted Principal Balance of all Auto Loan Receivables that have become Defaulted Receivables from the Initial Cut-off Date through to the end of Monthly Period immediately preceding the relevant Trust Calculation Date

125,120,433 JPY 0.15 %

The sum of (i) the aggregate Discounted Principal Balance of the Initial Auto Loan Receivables as of the Initial Cut-off Date and (ii) the aggregate Discounted Principal Balance as of the relevant Trust Calculation Date of all Additional Auto Loan Receivables (if any) entrusted on the Additional Entrustment Dates which fall six months prior to the relevant Trust Calculation Date.

86,237,848,327 JPY

Performance Triggers

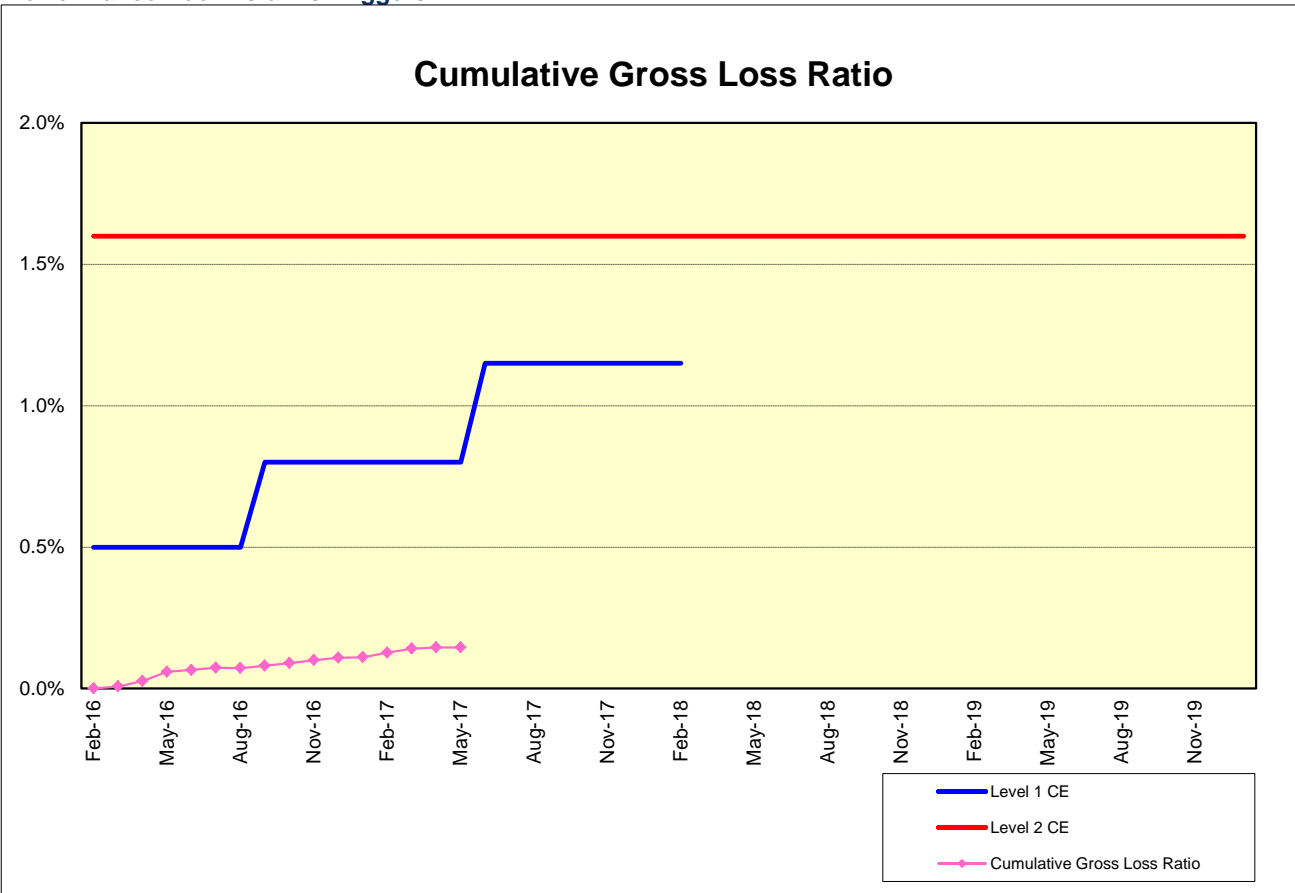
Asset Backed Loan Overcollateralization Percentage was implemented to assure on a monthly basis that no cash is paid to lower steps in the waterfall unless there is sufficient Overcollateralization to support the transaction. The performance trigger in form of a Credit Enhancement Increase Condition will be activated when the Cumulative Gross Loss Ratio exceeds the defined limits. In this case the Overcollateralization will be increased accordingly.

Levels	Credit Enhancement increase condition	Credit Enhancement increase condition in place?
Level 1 (i)	Cumulative Gross Loss Ratio exceeds 0.5% for any First Trust Payment Date on or prior to August 2016	no
Level 1 (ii)	Cumulative Gross Loss Ratio exceeds 0.8% for any First Trust Payment Date from September 2016 to May 2017	no
Level 1 (iii)	Cumulative Gross Loss Ratio exceeds 1.15% for any First Trust Payment Date from June 2017 to February 2018	no
Level 2	Cumulative Gross Loss Ratio exceeds 1.6% for any First Trust Payment Date	no

	Asset Backed Loan Overcollateralization Percentage
Prior to the expiration of the Revolving Period (No Credit Enhancement Increase Condition is in effect)	8.50 %
Following the expiration of Revolving Period (No Credit Enhancement Increase Condition is in effect)	11.50 %
After a Level 1 Credit Enhancement Increase Condition is in effect	17.00 %
After a Level 2 Credit Enhancement Increase Condition is in effect	100.00 %
Current Asset Backed Loan Overcollateralization Percentage	10.31 %

Cumulative Gross Loss & Cumulative Repurchased Receivables

Performance Pool vis-a-vis Triggers



Cumulative Repurchased Receivables

	Number of Contracts	Repurchase Price
Beginning of Period	0	0 JPY
Repurchased Receivables	0	0 JPY
End of Period	0	0 JPY

Defaulted and Delinquent Contracts

Information of Delinquencies and Defaults

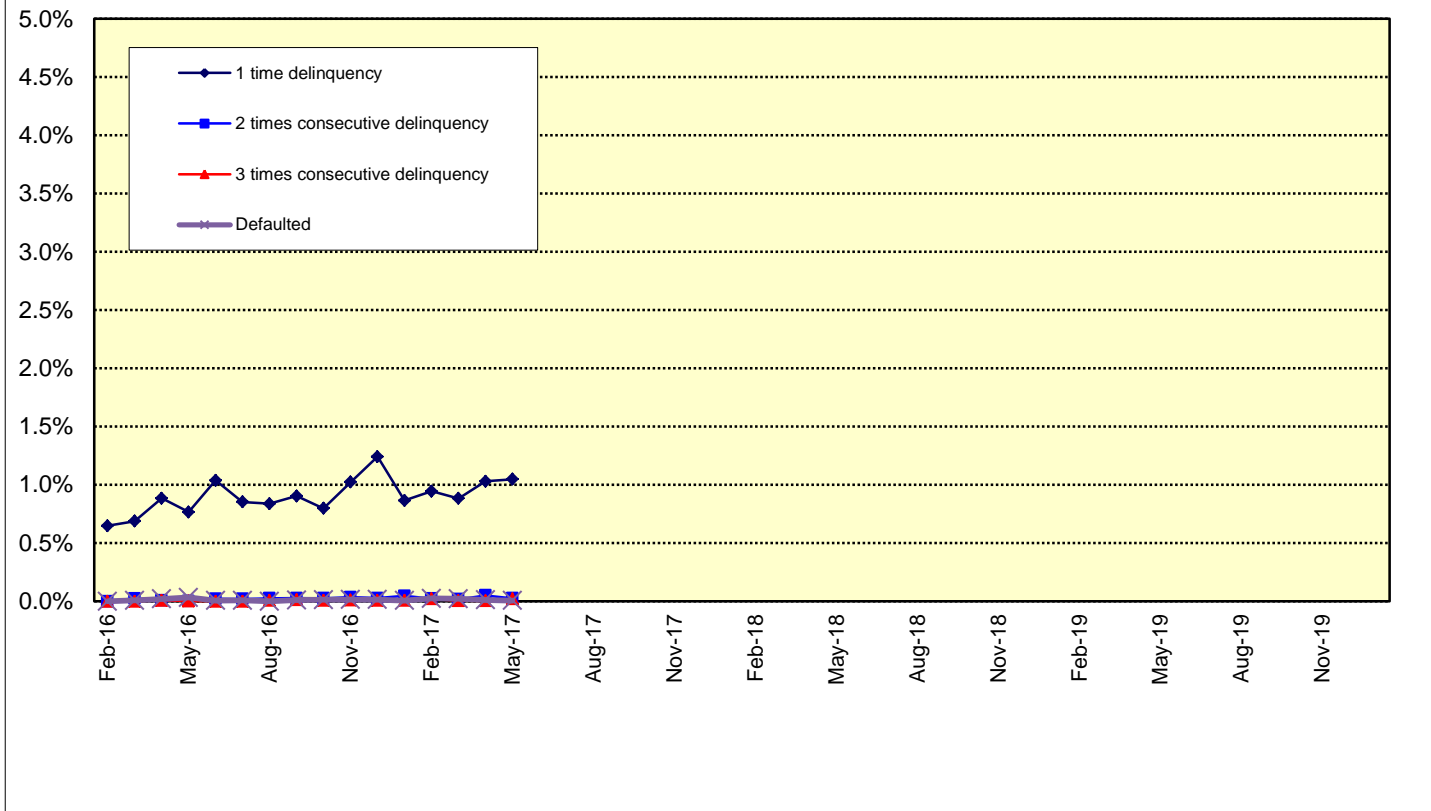
Current Reporting Period	Number of Contracts	Percentage of Contracts (*)	Outstanding Discounted Principal Balance	Percentage of Principal Balance (*)	Outstanding Nominal Balance	Percentage of Nominal Balance (*)
Delinquent	343	0.98 %	609,808,700 JPY	1.05 %	635,263,600 JPY	1.06 %
Default	2	0.01 %	3,253,374 JPY	0.01 %	3,267,470 JPY	0.01 %

(*) Based on the previous EoP

Delinquency Profile (Information Purpose Only)

Days in Arrears	Number of Contracts	Percentage of Contracts	Outstanding Discounted Principal Balance	Percentage of Principal Balance	Outstanding Nominal Balance	Percentage of Nominal Balance
1	331	0.97 %	584,383,130 JPY	1.05 %	608,364,600 JPY	1.06 %
2	9	0.03 %	14,424,654 JPY	0.03 %	15,092,100 JPY	0.03 %
3	3	0.01 %	11,000,916 JPY	0.02 %	11,806,900 JPY	0.02 %
Total	343	1.01 %	609,808,700 JPY	1.09 %	635,263,600 JPY	1.10 %

Delinquent / Defaulted (Gross Loss) Ratio



Run Out Schedule

ROS on the previous EoP on 2017/05/10

Next Payment Month	Number of Contracts	ABS Outstanding Principal	ABS Outstanding Interest	Outstanding Installment	ABS Remaining Principal	ABS Remaining Interest	ABS Remaining Installment
04.2017	34,909	58,033,987,686 JPY	1,830,907,914 JPY	59,864,895,600 JPY	0 JPY	0 JPY	0 JPY
05.2017	34,909	56,531,581,078 JPY	1,727,424,422 JPY	58,259,005,500 JPY	1,502,406,608 JPY	103,483,492 JPY	1,605,890,100 JPY
06.2017	34,477	54,337,832,951 JPY	1,626,533,349 JPY	55,964,366,300 JPY	2,193,748,127 JPY	100,891,073 JPY	2,294,639,200 JPY
07.2017	33,868	52,109,199,073 JPY	1,529,438,327 JPY	53,638,637,400 JPY	2,228,633,878 JPY	97,095,022 JPY	2,325,728,900 JPY
08.2017	33,381	50,462,327,705 JPY	1,436,289,795 JPY	51,898,617,500 JPY	1,646,871,368 JPY	93,148,532 JPY	1,740,019,900 JPY
09.2017	32,906	48,495,213,293 JPY	1,346,009,107 JPY	49,841,222,400 JPY	1,967,114,412 JPY	90,280,688 JPY	2,057,395,100 JPY
10.2017	32,002	46,875,639,301 JPY	1,258,892,999 JPY	48,134,532,300 JPY	1,619,573,992 JPY	87,116,108 JPY	1,706,690,100 JPY
11.2017	31,399	45,051,691,440 JPY	1,174,541,960 JPY	46,226,233,400 JPY	1,823,947,861 JPY	84,351,039 JPY	1,908,298,900 JPY
12.2017	30,605	41,839,230,412 JPY	1,093,167,388 JPY	42,932,397,800 JPY	3,212,461,028 JPY	81,374,572 JPY	3,293,835,600 JPY
01.2018	29,416	39,721,462,352 JPY	1,017,054,548 JPY	40,738,516,900 JPY	2,117,768,060 JPY	76,112,840 JPY	2,193,880,900 JPY
02.2018	28,499	37,457,343,354 JPY	944,557,446 JPY	38,401,900,800 JPY	2,264,118,998 JPY	72,497,102 JPY	2,336,616,100 JPY
03.2018	27,188	33,940,523,364 JPY	875,636,336 JPY	34,816,159,700 JPY	3,516,819,990 JPY	68,921,110 JPY	3,585,741,100 JPY
04.2018	24,750	32,367,424,615 JPY	811,625,285 JPY	33,179,049,900 JPY	1,573,098,749 JPY	64,011,051 JPY	1,637,109,800 JPY
05.2018	24,006	30,417,842,805 JPY	750,165,795 JPY	31,168,008,600 JPY	1,949,581,810 JPY	61,459,490 JPY	2,011,041,300 JPY
06.2018	22,899	27,670,095,430 JPY	691,802,070 JPY	28,361,897,500 JPY	2,747,747,375 JPY	58,363,725 JPY	2,806,111,100 JPY
07.2018	21,309	25,456,023,783 JPY	637,765,917 JPY	26,093,789,700 JPY	2,214,071,647 JPY	54,036,153 JPY	2,268,107,800 JPY
08.2018	20,210	23,547,978,816 JPY	587,667,884 JPY	24,135,646,700 JPY	1,908,044,967 JPY	50,098,033 JPY	1,958,143,000 JPY
09.2018	19,078	21,055,573,300 JPY	540,909,900 JPY	21,596,483,200 JPY	2,492,405,516 JPY	46,757,984 JPY	2,539,163,500 JPY
10.2018	17,401	19,592,029,614 JPY	498,299,286 JPY	20,090,328,900 JPY	1,463,543,686 JPY	42,610,614 JPY	1,424,630,600 JPY
11.2018	16,545	17,950,566,030 JPY	458,342,570 JPY	18,408,908,600 JPY	1,641,463,584 JPY	39,956,716 JPY	1,681,420,300 JPY
12.2018	15,540	16,339,571,297 JPY	421,258,803 JPY	16,760,830,100 JPY	1,610,994,733 JPY	37,083,767 JPY	1,648,078,500 JPY
01.2019	14,821	15,280,544,931 JPY	387,320,369 JPY	15,667,865,300 JPY	1,059,026,366 JPY	33,938,434 JPY	1,092,964,800 JPY
02.2019	14,219	14,304,190,574 JPY	355,516,326 JPY	14,659,706,900 JPY	976,354,357 JPY	31,804,043 JPY	1,008,158,400 JPY
03.2019	13,488	13,091,463,843 JPY	325,612,457 JPY	13,417,076,300 JPY	1,212,726,731 JPY	29,903,869 JPY	1,242,630,600 JPY
04.2019	12,410	12,388,177,685 JPY	298,008,515 JPY	12,686,186,200 JPY	703,286,158 JPY	27,603,942 JPY	730,890,100 JPY
05.2019	11,991	11,679,890,995 JPY	271,769,605 JPY	11,951,660,600 JPY	708,286,690 JPY	26,238,910 JPY	734,525,600 JPY
06.2019	11,510	10,727,602,010 JPY	246,951,490 JPY	10,974,553,500 JPY	952,288,985 JPY	24,818,115 JPY	977,107,100 JPY
07.2019	10,881	9,846,257,309 JPY	224,029,091 JPY	10,070,286,400 JPY	881,344,701 JPY	22,922,399 JPY	904,267,100 JPY
08.2019	10,423	9,180,187,359 JPY	202,898,841 JPY	9,383,086,200 JPY	666,069,950 JPY	21,130,250 JPY	687,200,200 JPY
09.2019	9,987	8,396,555,941 JPY	183,109,459 JPY	8,579,665,400 JPY	783,631,418 JPY	19,789,382 JPY	803,420,800 JPY
10.2019	9,340	7,879,975,626 JPY	164,819,374 JPY	8,044,795,500 JPY	516,580,315 JPY	18,290,085 JPY	534,870,400 JPY
11.2019	8,933	7,405,770,676 JPY	147,628,024 JPY	7,553,398,700 JPY	474,204,950 JPY	17,191,350 JPY	491,396,300 JPY
12.2019	8,522	6,679,675,631 JPY	131,456,369 JPY	6,811,132,000 JPY	726,095,045 JPY	16,171,655 JPY	742,266,700 JPY
01.2020	8,077	6,177,351,593 JPY	116,878,707 JPY	6,294,230,300 JPY	502,324,038 JPY	14,577,662 JPY	516,901,700 JPY
02.2020	7,709	5,740,346,542 JPY	103,436,758 JPY	5,843,783,300 JPY	437,005,051 JPY	13,441,949 JPY	450,447,000 JPY
03.2020	7,241	5,260,866,765 JPY	90,984,535 JPY	5,351,851,300 JPY	479,479,777 JPY	12,452,223 JPY	491,932,000 JPY
04.2020	6,617	4,940,981,721 JPY	79,601,879 JPY	5,020,583,600 JPY	319,885,044 JPY	11,382,656 JPY	331,267,700 JPY
05.2020	6,311	4,585,217,123 JPY	68,938,077 JPY	4,654,155,200 JPY	355,764,598 JPY	10,663,802 JPY	366,428,400 JPY
06.2020	5,899	4,145,164,498 JPY	59,082,102 JPY	4,204,246,600 JPY	440,052,625 JPY	9,855,975 JPY	449,908,600 JPY
07.2020	5,467	3,693,407,501 JPY	50,229,799 JPY	3,743,637,300 JPY	451,756,997 JPY	8,852,303 JPY	460,609,300 JPY
08.2020	5,048	3,292,214,484 JPY	42,378,816 JPY	3,334,593,300 JPY	401,193,017 JPY	7,850,983 JPY	409,044,000 JPY
09.2020	4,583	2,830,033,808 JPY	35,413,892 JPY	2,865,447,700 JPY	462,180,676 JPY	6,964,924 JPY	469,145,600 JPY
10.2020	3,934	2,516,750,016 JPY	29,462,284 JPY	2,546,212,300 JPY	313,283,792 JPY	5,951,608 JPY	319,235,400 JPY
11.2020	3,515	2,141,661,600 JPY	24,221,800 JPY	2,165,883,400 JPY	375,088,416 JPY	5,240,484 JPY	380,328,900 JPY
12.2020	2,996	1,852,741,001 JPY	19,812,899 JPY	1,872,553,900 JPY	288,920,599 JPY	4,408,901 JPY	293,329,500 JPY
01.2021	2,753	1,575,450,602 JPY	16,021,698 JPY	1,591,472,300 JPY	277,290,399 JPY	3,791,201 JPY	281,081,600 JPY
02.2021	2,444	1,303,818,944 JPY	12,777,256 JPY	1,316,596,200 JPY	271,631,658 JPY	3,244,442 JPY	274,871,100 JPY
03.2021	2,088	966,554,514 JPY	10,049,786 JPY	976,604,300 JPY	337,264,430 JPY	2,727,470 JPY	339,991,900 JPY
04.2021	1,605	837,621,369 JPY	7,973,531 JPY	845,594,900 JPY	128,933,145 JPY	2,076,255 JPY	131,009,400 JPY
05.2021	1,419	685,409,286 JPY	6,164,014 JPY	691,573,300 JPY	152,212,083 JPY	1,809,517 JPY	154,021,600 JPY
06.2021	1,159	535,805,003 JPY	4,666,697 JPY	540,471,700 JPY	149,604,283 JPY	1,497,317 JPY	151,101,600 JPY
07.2021	914	398,334,370 JPY	3,497,330 JPY	3,497,330 JPY	137,470,633 JPY	1,169,367 JPY	138,640,000 JPY
08.2021	732	272,325,896 JPY	2,612,604 JPY	274,938,500 JPY	126,008,474 JPY	884,726 JPY	126,893,200 JPY
09.2021	565	158,925,565 JPY	1,976,635 JPY	160,902,200 JPY	113,400,331 JPY	635,969 JPY	114,036,300 JPY
10.2021	380	107,577,096 JPY	1,566,404 JPY	109,143,500 JPY	51,348,469 JPY	410,231 JPY	51,758,700 JPY
11.2021	288	81,004,456 JPY	1,265,744 JPY	82,270,200 JPY	26,572,640 JPY	300,660 JPY	26,873,300 JPY
12.2021	230	64,787,416 JPY	1,027,084 JPY	65,814,500 JPY	16,217,040 JPY	238,660 JPY	16,455,700 JPY
01.2022	213	53,796,906 JPY	835,094 JPY	54,632,000 JPY	10,990,510 JPY	191,990 JPY	11,182,500 JPY
02.2022	194	46,337,770 JPY	676,030 JPY	47,013,800 JPY	7,459,136 JPY	159,064 JPY	7,618,200 JPY
03.2022	176	39,553,323 JPY	538,877 JPY	40,092,200 JPY	6,784,447 JPY	137,153 JPY	6,921,600 JPY
04.2022	156	33,611,745 JPY	421,455 JPY	34,033,200 JPY	5,941,578 JPY	117,422 JPY	6,059,000 JPY
05.2022	135	28,400,483 JPY	321,317 JPY	28,721,800 JPY	5,211,262 JPY	100,138 JPY	5,311,400 JPY
06.2022	123	21,261,297 JPY	236,403 JPY	21,497,700 JPY	7,139,186 JPY	84,914 JPY	7,224,100 JPY
07.2022	105	14,711,025 JPY	171,975 JPY	14,883,000 JPY	6,550,272 JPY	64,428 JPY	6,614,700 JPY
08.2022	90	10,593,306 JPY	126,794 JPY	10,720,100 JPY	4,117,719 JPY	45,181 JPY	4,162,900 JPY
09.2022	75	7,679,477 JPY	93,623 JPY	7,773,100 JPY	2,913,829 JPY	33,171 JPY	2,947,000 JPY
10.2022	48	5,666,005 JPY	69,295 JPY	5,735,300 JPY	2,013,472 JPY	24,328 JPY	2,037,800 JPY
11.2022	34	4,172,328 JPY	51,272 JPY	4,223,600 JPY	1,493,677 JPY	18,023 JPY	1,511,700 JPY
12.2022	17	2,981,718 JPY	37,982 JPY	3,019,700 JPY	1,190,610 JPY	13,290 JPY	1,203,900 JPY
01.2023	10	2,137,115 JPY	28,485 JPY	2,165,600 JPY	844,603 JPY	9,497 JPY	854,100 JPY
02.2023	8	1,813,322 JPY	21,678 JPY	1,835,000 JPY	323,793 JPY	6,807 JPY	330,600 JPY
03.2023	7	1,514,999 JPY	15,901 JPY	1,530,900 JPY	298,323 JPY	5,777 JPY	304,100 JPY
04.2023	6	1,264,725 JPY	11,075 JPY	1,275,800 JPY	250,274 JPY	4,826 JPY	255,100 JPY
05.2023	6	1,013,654 JPY	7,046 JPY	1,020,700 JPY	251,071 JPY	4,029 JPY	255,100 JPY
06.2023	6	761,783 JPY	3,817 JPY	765,600 JPY	251,871 JPY	3,229 JPY	255,100 JPY
07.2023	4	261,310 JPY	1,390 JPY	262,700 JPY	500,473 JPY	2,427 JPY	502,900 JPY
08.2023	3	145,542 JPY	558 JPY	146,100 JPY	115,768 JPY	832 JPY	116,600 JPY
09.2023	3	29,406 JPY	94 JPY	29,500 JPY	116,136 JPY	464 JPY	116,600 JPY
10.2023	1	0 JPY	0 JPY	0 JPY	29,406 JPY	94 JPY	29,500 JPY

Run Out Schedule

ROS on the relevant EoP on 2017/06/10

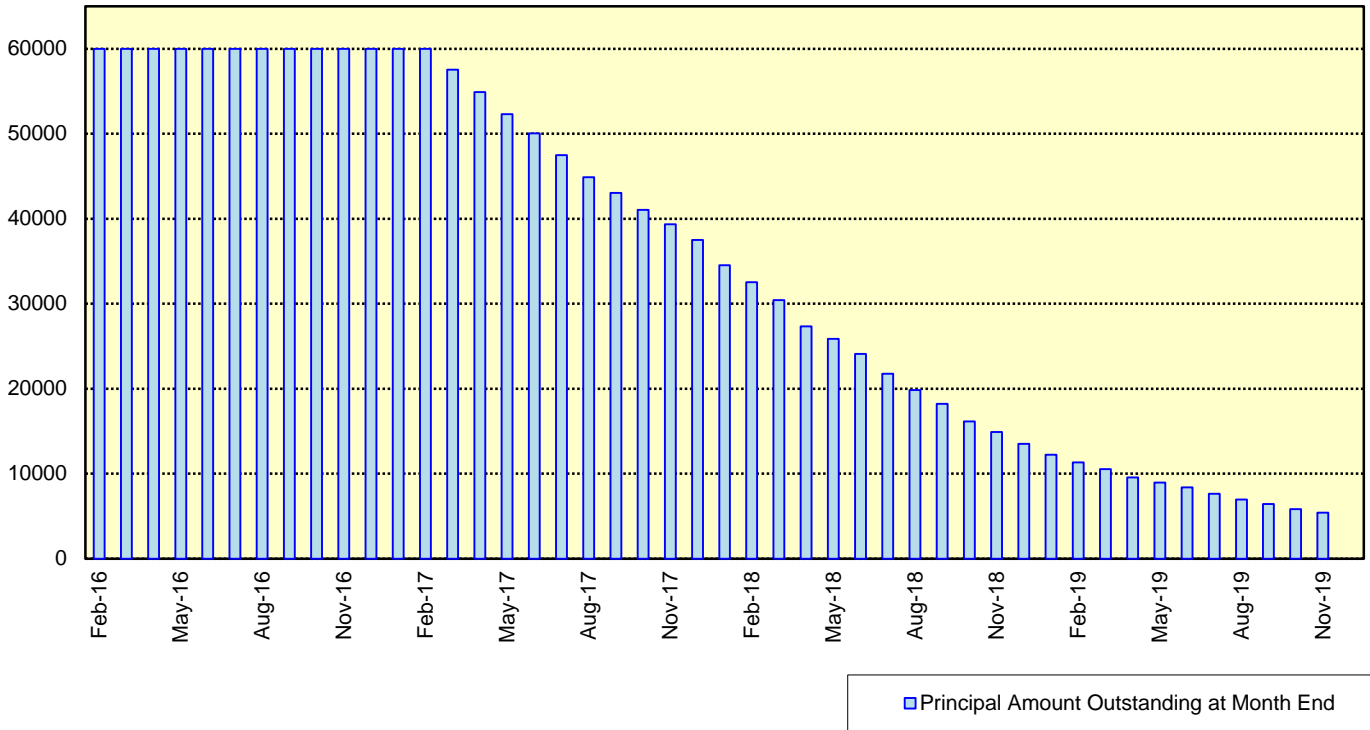
Next Payment Month	Number of Contracts	ABS Outstanding Principal	ABS Outstanding Interest	Outstanding Installment	ABS Remaining Principal	ABS Remaining Interest	ABS Remaining Installment
05.2017	34,059	55,819,415,473 JPY	1,708,792,727 JPY	57,528,208,200 JPY	0 JPY	0 JPY	0 JPY
06.2017	34,059	53,681,426,368 JPY	1,609,199,632 JPY	55,290,626,000 JPY	2,137,989,105 JPY	99,593,095 JPY	2,237,582,200 JPY
07.2017	33,477	51,497,182,449 JPY	1,513,306,651 JPY	53,010,489,100 JPY	2,184,243,919 JPY	95,892,981 JPY	2,280,136,900 JPY
08.2017	33,006	49,879,815,186 JPY	1,421,288,114 JPY	51,301,103,300 JPY	1,617,367,263 JPY	92,018,537 JPY	1,709,385,800 JPY
09.2017	32,541	47,956,099,032 JPY	1,332,089,568 JPY	49,288,188,600 JPY	1,923,716,154 JPY	89,198,546 JPY	2,012,914,700 JPY
10.2017	31,658	46,358,232,574 JPY	1,245,988,926 JPY	47,604,221,500 JPY	1,597,866,458 JPY	86,100,642 JPY	1,683,967,100 JPY
11.2017	31,064	44,558,547,123 JPY	1,162,611,777 JPY	45,721,158,900 JPY	1,799,685,451 JPY	83,377,149 JPY	1,883,062,600 JPY
12.2017	30,280	41,390,704,007 JPY	1,082,173,093 JPY	42,472,877,100 JPY	3,167,843,116 JPY	80,438,684 JPY	3,248,281,800 JPY
01.2018	29,108	39,299,830,170 JPY	1,006,926,530 JPY	40,306,756,700 JPY	2,090,873,837 JPY	75,246,563 JPY	2,166,120,400 JPY
02.2018	28,202	37,060,517,518 JPY	935,247,682 JPY	37,995,765,200 JPY	2,239,312,652 JPY	71,678,848 JPY	2,310,991,500 JPY
03.2018	26,905	33,591,191,832 JPY	867,101,668 JPY	34,458,293,500 JPY	3,469,325,686 JPY	68,146,014 JPY	3,537,471,700 JPY
04.2018	24,502	32,040,946,236 JPY	803,793,964 JPY	32,844,740,200 JPY	1,550,245,596 JPY	63,307,704 JPY	1,613,553,300 JPY
05.2018	23,771	30,114,473,510 JPY	743,002,190 JPY	30,857,475,700 JPY	1,926,472,726 JPY	60,791,774 JPY	1,987,264,500 JPY
06.2018	22,674	27,397,025,347 JPY	685,267,553 JPY	28,082,292,900 JPY	2,717,448,163 JPY	57,734,637 JPY	2,775,182,800 JPY
07.2018	21,100	25,207,484,633 JPY	631,811,567 JPY	25,839,296,200 JPY	2,189,540,714 JPY	53,455,986 JPY	2,242,996,700 JPY
08.2018	20,011	23,317,730,431 JPY	582,244,969 JPY	23,899,975,400 JPY	1,889,754,202 JPY	49,566,598 JPY	1,939,320,800 JPY
09.2018	18,889	20,845,285,993 JPY	535,983,707 JPY	21,381,269,700 JPY	2,472,444,438 JPY	46,261,262 JPY	2,518,705,700 JPY
10.2018	17,225	19,394,027,938 JPY	493,831,862 JPY	19,887,859,800 JPY	1,451,258,055 JPY	42,151,845 JPY	1,493,409,900 JPY
11.2018	16,374	17,766,767,948 JPY	454,306,552 JPY	18,221,074,500 JPY	1,627,259,990 JPY	39,525,310 JPY	1,666,785,300 JPY
12.2018	15,378	16,175,311,420 JPY	417,622,080 JPY	16,592,933,500 JPY	1,591,456,528 JPY	36,684,472 JPY	1,628,141,000 JPY
01.2019	14,664	15,130,898,164 JPY	384,041,136 JPY	15,514,939,300 JPY	1,044,413,256 JPY	33,580,944 JPY	1,077,994,200 JPY
02.2019	14,068	14,165,267,282 JPY	352,564,518 JPY	14,517,831,800 JPY	965,630,882 JPY	31,476,618 JPY	997,107,500 JPY
03.2019	13,345	12,968,123,696 JPY	322,964,004 JPY	13,291,087,700 JPY	1,197,143,586 JPY	29,600,514 JPY	1,226,744,100 JPY
04.2019	12,284	12,766,308,234 JPY	295,636,066 JPY	12,571,944,300 JPY	691,815,462 JPY	27,327,938 JPY	1,193,143,400 JPY
05.2019	11,874	11,580,258,059 JPY	269,648,241 JPY	11,849,906,300 JPY	696,050,175 JPY	25,987,825 JPY	1,227,038,000 JPY
06.2019	11,406	10,637,876,278 JPY	245,051,522 JPY	10,882,927,800 JPY	942,381,781 JPY	24,596,719 JPY	966,978,500 JPY
07.2019	10,787	9,764,905,010 JPY	222,329,990 JPY	9,987,235,000 JPY	872,971,268 JPY	22,721,532 JPY	895,692,800 JPY
08.2019	10,333	9,104,434,884 JPY	201,382,716 JPY	9,305,817,600 JPY	660,470,126 JPY	20,947,274 JPY	681,417,400 JPY
09.2019	9,903	8,326,696,168 JPY	181,763,432 JPY	8,508,459,600 JPY	777,738,716 JPY	19,619,284 JPY	797,358,000 JPY
10.2019	9,261	7,814,791,096 JPY	163,629,604 JPY	7,978,420,700 JPY	511,905,072 JPY	18,133,828 JPY	530,038,900 JPY
11.2019	8,859	7,345,163,425 JPY	146,584,175 JPY	7,491,747,600 JPY	469,627,671 JPY	17,045,429 JPY	486,673,100 JPY
12.2019	8,454	6,627,427,395 JPY	130,548,005 JPY	6,757,975,400 JPY	717,736,030 JPY	16,036,170 JPY	733,772,200 JPY
01.2020	8,013	6,129,732,503 JPY	116,086,697 JPY	6,245,819,200 JPY	497,694,892 JPY	14,461,308 JPY	512,156,200 JPY
02.2020	7,648	5,696,605,332 JPY	102,750,268 JPY	5,799,355,600 JPY	433,127,171 JPY	13,336,429 JPY	446,463,600 JPY
03.2020	7,182	5,222,006,944 JPY	90,394,556 JPY	5,312,401,500 JPY	474,598,388 JPY	12,355,712 JPY	486,954,100 JPY
04.2020	6,566	4,905,819,001 JPY	79,097,199 JPY	4,984,916,200 JPY	316,187,943 JPY	11,297,357 JPY	327,485,300 JPY
05.2020	6,266	4,554,420,153 JPY	68,510,147 JPY	4,622,930,300 JPY	351,398,848 JPY	10,587,052 JPY	361,985,900 JPY
06.2020	5,861	4,117,128,077 JPY	58,722,723 JPY	4,175,850,800 JPY	437,292,076 JPY	9,787,424 JPY	447,079,500 JPY
07.2020	5,430	3,668,506,956 JPY	49,932,144 JPY	3,718,439,100 JPY	448,621,121 JPY	8,790,579 JPY	457,411,700 JPY
08.2020	5,013	3,270,911,328 JPY	42,136,072 JPY	3,313,047,400 JPY	397,595,628 JPY	7,796,072 JPY	405,391,700 JPY
09.2020	4,552	2,813,822,536 JPY	35,217,564 JPY	2,849,040,100 JPY	457,088,792 JPY	6,918,508 JPY	464,007,300 JPY
10.2020	3,909	2,502,870,632 JPY	29,302,868 JPY	2,532,173,500 JPY	310,951,904 JPY	5,914,696 JPY	316,866,600 JPY
11.2020	3,494	2,131,524,375 JPY	24,093,825 JPY	2,155,618,200 JPY	371,346,257 JPY	5,209,043 JPY	376,555,300 JPY
12.2020	2,980	1,843,729,252 JPY	19,708,048 JPY	1,863,437,300 JPY	287,795,123 JPY	4,385,777 JPY	292,180,900 JPY
01.2021	2,738	1,567,343,045 JPY	15,937,455 JPY	1,583,280,500 JPY	276,386,207 JPY	3,770,593 JPY	280,156,800 JPY
02.2021	2,429	1,298,694,405 JPY	12,711,495 JPY	1,311,405,900 JPY	268,648,640 JPY	3,225,960 JPY	271,874,600 JPY
03.2021	2,077	963,040,757 JPY	9,996,343 JPY	973,037,100 JPY	335,653,648 JPY	2,715,152 JPY	338,368,800 JPY
04.2021	1,596	835,029,137 JPY	7,929,263 JPY	842,958,400 JPY	128,011,620 JPY	2,067,080 JPY	130,078,700 JPY
05.2021	1,412	683,064,129 JPY	6,127,171 JPY	689,191,300 JPY	151,965,008 JPY	1,802,092 JPY	153,767,100 JPY
06.2021	1,152	533,842,564 JPY	4,636,636 JPY	538,479,200 JPY	149,221,565 JPY	1,490,535 JPY	150,712,100 JPY
07.2021	907	396,670,625 JPY	3,473,075 JPY	400,143,700 JPY	137,171,939 JPY	1,163,561 JPY	138,335,500 JPY
08.2021	727	271,044,429 JPY	2,593,371 JPY	273,637,800 JPY	125,626,196 JPY	879,704 JPY	126,505,900 JPY
09.2021	561	157,804,489 JPY	1,961,311 JPY	159,765,800 JPY	113,239,940 JPY	632,060 JPY	113,872,000 JPY
10.2021	377	106,582,034 JPY	1,554,566 JPY	108,136,600 JPY	51,222,455 JPY	406,745 JPY	51,629,200 JPY
11.2021	285	80,135,798 JPY	1,257,002 JPY	81,392,800 JPY	26,446,236 JPY	297,564 JPY	26,743,800 JPY
12.2021	227	64,095,552 JPY	1,021,048 JPY	65,116,600 JPY	16,040,246 JPY	235,954 JPY	16,276,200 JPY
01.2022	210	53,432,363 JPY	831,237 JPY	54,263,600 JPY	10,663,189 JPY	189,811 JPY	10,853,000 JPY
02.2022	192	46,054,978 JPY	673,322 JPY	46,728,300 JPY	7,377,385 JPY	157,915 JPY	7,535,300 JPY
03.2022	175	39,326,730 JPY	537,070 JPY	39,863,800 JPY	6,728,248 JPY	136,252 JPY	6,864,500 JPY
04.2022	155	33,441,530 JPY	420,370 JPY	33,861,900 JPY	5,885,200 JPY	116,700 JPY	6,001,900 JPY
05.2022	134	28,286,826 JPY	320,774 JPY	28,607,600 JPY	5,154,704 JPY	99,596 JPY	5,254,300 JPY
06.2022	122	21,204,378 JPY	236,222 JPY	21,440,600 JPY	7,082,448 JPY	84,552 JPY	7,167,000 JPY
07.2022	104	14,711,025 JPY	171,975 JPY	14,883,000 JPY	6,493,353 JPY	64,247 JPY	6,557,600 JPY
08.2022	90	10,593,306 JPY	126,794 JPY	10,720,100 JPY	4,117,719 JPY	45,181 JPY	4,162,900 JPY
09.2022	75	7,679,477 JPY	93,623 JPY	7,773,100 JPY	2,913,829 JPY	33,171 JPY	2,947,000 JPY
10.2022	48	5,666,005 JPY	69,295 JPY	5,735,300 JPY	2,013,472 JPY	24,328 JPY	2,037,800 JPY
11.2022	34	4,172,328 JPY	51,272 JPY	4,223,600 JPY	1,493,677 JPY	18,023 JPY	1,511,700 JPY
12.2022	17	2,981,718 JPY	37,982 JPY	3,019,700 JPY	1,190,610 JPY	13,290 JPY	1,203,900 JPY
01.2023	10	2,137,115 JPY	28,485 JPY	2,165,600 JPY	844,603 JPY	9,497 JPY	854,100 JPY
02.2023	8	1,813,322 JPY	21,678 JPY	1,835,000 JPY	323,793 JPY	6,807 JPY	330,600 JPY
03.2023	7	1,514,999 JPY	15,901 JPY	1,530,900 JPY	298,323 JPY	5,777 JPY	304,100 JPY
04.2023	6	1,264,725 JPY	11,075 JPY	1,275,800 JPY	250,274 JPY	4,826 JPY	255,100 JPY
05.2023	6	1,013,654 JPY	7,046 JPY	1,020,700 JPY	251,071 JPY	4,029 JPY	255,100 JPY
06.2023	6	761,783 JPY	3,817 JPY	765,600 JPY	251,871 JPY	3,229 JPY	255,100 JPY
07.2023	4	261,310 JPY	1,390 JPY	262,700 JPY	500,473 JPY	2,427 JPY	502,900 JPY
08.2023	3	145,542 JPY	558 JPY	146,100 JPY	115,768 JPY	832 JPY	116,600 JPY
09.2023	3	29,406 JPY	94 JPY	29,500 JPY	116,136 JPY	464 JPY	116,600 JPY
10.2023	1	0 JPY	0 JPY	0 JPY	29,406 JPY	94 JPY	29,500 JPY

Expected Amortisation

Expected Amortization to the Second Trust

JPY mil.

Assuming a Clean-Up Call at 10% of the Initial Outstanding Balance, annual prepayments of 10% and 0% defaults.



Distribution by Sub-Servicer

Sub-Servicer	Number of Loans	Percentage of Loans	Outstanding Principal Balance	Percentage of Balance
Cedyna	20,321	59.66 %	34,135,683,092 JPY	61.15 %
Jaccs	13,738	40.34 %	21,683,732,381 JPY	38.85 %
Total	34,059	100.00 %	55,819,415,473 JPY	100.00 %

Distribution by Brand

Make	Number of Loans	Percentage of Loans	Outstanding Discounted Principal Balance	Percentage of Balance
VW	22,136	64.99 %	30,302,332,510 JPY	54.29 %
Audi	11,878	34.87 %	25,431,397,098 JPY	45.56 %
Bentley	15	0.04 %	51,215,969 JPY	0.09 %
Lamborghini	3	0.01 %	12,052,324 JPY	0.02 %
Other	27	0.08 %	22,417,572 JPY	0.04 %
Total	34,059	100.00 %	55,819,415,473 JPY	100.00 %

Distribution by New and Used
Distribution by New and Used

New or Used	Number of Loans	Percentage of Loans	Outstanding Discounted Principal Balance	Percentage of Balance
New	24,252	71.21 %	44,444,263,392 JPY	79.62 %
Used	8,330	24.46 %	10,728,376,080 JPY	19.22 %
Used (Prolonged)	1,477	4.34 %	646,776,001 JPY	1.16 %
Total	34,059	100.00 %	55,819,415,473 JPY	100.00 %

Distribution by Brand New and Used

New or Used	Number of Loans	Percentage of Loans	Outstanding Discounted Principal Balance	Percentage of Balance
VW New	16,030	47.07 %	24,821,270,048 JPY	44.47 %
VW Used	4,867	14.29 %	5,011,996,176 JPY	8.98 %
VW Used (Prolonged)	1,239	3.64 %	469,066,286 JPY	0.84 %
Audi New	8,211	24.11 %	19,585,577,790 JPY	35.09 %
Audi Used	3,429	10.07 %	5,668,109,593 JPY	10.15 %
Audi Used (Prolonged)	238	0.70 %	177,709,715 JPY	0.32 %
Other	45	0.13 %	85,685,865 JPY	0.15 %
Total	34,059	100.00 %	55,819,415,473 JPY	100.00 %

Distribution by Product Type

Loan Type List

Loan Type	Description
100	Volkswagen Owner's Plan
100	Audi Owner's Plan
100	Lamborghini Auto Loan
100	Bentley Auto Loan
101	Twin Loan
105	Refinanced Volkswagen Solutions
106	Refinanced Volkswagen Das Welt Auto with refinance option *
106	Refinanced Audi S-Loan/ S-Loan Plus
106	Refinanced Lamborghini Hyper Premium Plan
106	Refinanced Bentley My Flying B
140	Volkswagen Solutions
150	Volkswagen Das Welt Auto with refinance option **
150	Audi S-Loan
150	Lamborghini Hyper Premium Plan
150	Bentley My Flying B
151	Audi S-Loan Plus

(*) The name was changed from "Refinanced Volkswagen GUC with refinance option" effective from 1 February 2012.

No other changes were made to auto loan agreements.

(**) The name was changed from "Volkswagen GUC with refinance option" effective from 1 February 2012.

No other changes were made to auto loan agreements.

Product Type

Loan Type	Number of Loans	Percentage of Loans	Outstanding Discounted Principal Balance	Percentage of Balance
100	5,945	17.46 %	6,638,909,793 JPY	11.89 %
101	3	0.01 %	728,102 JPY	0.00 %
105	1,204	3.54 %	462,919,573 JPY	0.83 %
106	273	0.80 %	183,856,428 JPY	0.33 %
140-VFJ	2,708	7.95 %	4,147,745,967 JPY	7.43 %
140-Dealer	11,741	34.47 %	19,000,821,675 JPY	34.04 %
150	11,366	33.37 %	23,418,709,544 JPY	41.95 %
151	819	2.40 %	1,965,724,391 JPY	3.52 %
Total	34,059	100.00 %	55,819,415,473 JPY	100.00 %

Credit Type

Credit Type	Number of Loans	Percentage of Loans	Outstanding Discounted Principal Balance	Percentage of Balance
Balloon Type Loan	26,634	78.20 %	48,533,001,577 JPY	86.95 %
Equal Instalment Type Loan	7,425	21.80 %	7,286,413,896 JPY	13.05 %
Total	34,059	100.00 %	55,819,415,473 JPY	100.00 %

Distribution by RV

Loan Type	Number of Loans	Percentage of Balance	Outstanding Discounted Principal Balance
100/101/105/106	7,425	13.05 %	7,286,413,896 JPY
140-VFJ (excl. balloon)		3.21 %	1,790,626,605 JPY
140-VFJ (balloon)		4.22 %	2,357,119,362 JPY
140-VFJ	2,708	7.43 %	4,147,745,967 JPY
140-Dealer (excl. balloon)		15.06 %	8,406,403,706 JPY
140-Dealer (balloon)		18.98 %	10,594,417,969 JPY
140-Dealer	11,741	34.04 %	19,000,821,675 JPY
150 (excl. balloon)		17.31 %	9,663,746,818 JPY
150 (balloon)		24.64 %	13,754,962,726 JPY
150	11,366	41.95 %	23,418,709,544 JPY
151 (excl. balloon)		0.96 %	533,175,617 JPY
151 (balloon)		2.57 %	1,432,548,774 JPY
151	819	3.52 %	1,965,724,391 JPY
Total	34,059	100.00 %	55,819,415,473 JPY

Type of Payment Portion	Percentage of Balance	Outstanding Discounted Principal Balance
Monthly Installment Portion	49.59 %	27,680,366,642 JPY
Balloon Portion	50.41 %	28,139,048,831 JPY
Total	100.00 %	55,819,415,473 JPY

Distribution by Brand New and Used
Audi

New or Used	Number of Loans	Percentage of Loans	Outstanding Discounted Principal Balance	Percentage of Balance
New	8,211	69.13 %	19,585,577,790 JPY	77.01 %
Used	3,667	30.87 %	5,845,819,308 JPY	22.99 %
Total	11,878	100.00 %	25,431,397,098 JPY	100.00 %

Bentley

New or Used	Number of Loans	Percentage of Loans	Outstanding Discounted Principal Balance	Percentage of Balance
New	9	60.00 %	33,254,889 JPY	64.93 %
Used	6	40.00 %	17,961,080 JPY	35.07 %
Total	15	100.00 %	51,215,969 JPY	100.00 %

Lamborghini

New or Used	Number of Loans	Percentage of Loans	Outstanding Discounted Principal Balance	Percentage of Balance
New	1	33.33 %	3,111,930 JPY	25.82 %
Used	2	66.67 %	8,940,394 JPY	74.18 %
Total	3	100.00 %	12,052,324 JPY	100.00 %

VW

New or Used	Number of Loans	Percentage of Loans	Outstanding Discounted Principal Balance	Percentage of Balance
New	16,030	72.42 %	24,821,270,048 JPY	81.91 %
Used	6,106	27.58 %	5,481,062,462 JPY	18.09 %
Total	22,136	100.00 %	30,302,332,510 JPY	100.00 %

OTHER

New or Used	Number of Loans	Percentage of Loans	Outstanding Discounted Principal Balance	Percentage of Balance
New	1	3.70 %	1,048,735 JPY	4.68 %
Used	26	96.30 %	21,368,837 JPY	95.32 %
Total	27	100.00 %	22,417,572 JPY	100.00 %

Distribution by Customer Type

Customer Type

Customer Type	Number of Loans	Percentage of Loans	Outstanding Discounted Principal Balance	Percentage of Balance
Retail	30,752	90.29 %	48,440,750,859 JPY	86.78 %
Corporate	3,307	9.71 %	7,378,664,614 JPY	13.22 %
Total	34,059	100.00 %	55,819,415,473 JPY	100.00 %

Distribution by Outstanding Discounted Principal Balance

Outstanding Discounted Principal Balance	Number of Loans	Percentage of Loans	Outstanding Discounted Principal Balance	Percentage of Balance
<= 500,000 JPY	3,328	9.77 %	963,563,846 JPY	1.73 %
500,001 JPY - 1,000,000 JPY	5,795	17.01 %	4,471,398,112 JPY	8.01 %
1,000,001 JPY - 1,500,000 JPY	8,313	24.41 %	10,480,816,438 JPY	18.78 %
1,500,001 JPY - 2,000,000 JPY	7,068	20.75 %	12,217,154,029 JPY	21.89 %
2,000,001 JPY - 2,500,000 JPY	4,129	12.12 %	9,174,192,048 JPY	16.44 %
2,500,001 JPY - 3,000,000 JPY	2,360	6.93 %	6,439,004,199 JPY	11.54 %
3,000,001 JPY - 3,500,000 JPY	1,304	3.83 %	4,205,582,021 JPY	7.53 %
3,500,001 JPY - 4,000,000 JPY	699	2.05 %	2,599,607,215 JPY	4.66 %
4,000,001 JPY - 4,500,000 JPY	425	1.25 %	1,798,442,381 JPY	3.22 %
4,500,001 JPY - 5,000,000 JPY	248	0.73 %	1,172,956,687 JPY	2.10 %
5,000,001 JPY - 6,000,000 JPY	270	0.79 %	1,466,166,173 JPY	2.63 %
6,000,001 JPY - 7,000,000 JPY	78	0.23 %	503,539,762 JPY	0.90 %
7,000,001 JPY - 8,000,000 JPY	26	0.08 %	193,849,242 JPY	0.35 %
8,000,001 JPY - 9,000,000 JPY	16	0.05 %	133,143,320 JPY	0.24 %
9,000,001 JPY - 10,000,000 JPY	0	0.00 %	0 JPY	0.00 %
>= 10,000,001 JPY	0	0.00 %	0 JPY	0.00 %
Total	34,059	100.00 %	55,819,415,473 JPY	100.00 %

Statistics

Minimum Outstanding Discounted Principal Balance	5,981 JPY
Maximum Outstanding Discounted Principal Balance	8,880,937 JPY
Average Outstanding Discounted Principal Balance	1,638,904 JPY

Distribution by Original Principal Amount

Original Principal Balance	Number of Loans	Percentage of Loans	Outstanding Discounted Principal Balance	Percentage of Balance
<= 500,000 JPY	281	0.83 %	51,648,251 JPY	0.09 %
500,001 JPY - 1,000,000 JPY	2,200	6.46 %	899,179,124 JPY	1.61 %
1,000,001 JPY - 1,500,000 JPY	3,935	11.55 %	2,984,265,528 JPY	5.35 %
1,500,001 JPY - 2,000,000 JPY	6,025	17.69 %	6,590,008,233 JPY	11.81 %
2,000,001 JPY - 2,500,000 JPY	5,853	17.18 %	8,329,689,923 JPY	14.92 %
2,500,001 JPY - 3,000,000 JPY	5,527	16.23 %	9,500,907,888 JPY	17.02 %
3,000,001 JPY - 3,500,000 JPY	3,603	10.58 %	7,433,525,492 JPY	13.32 %
3,500,001 JPY - 4,000,000 JPY	2,404	7.06 %	5,703,627,786 JPY	10.22 %
4,000,001 JPY - 4,500,000 JPY	1,344	3.95 %	3,663,381,034 JPY	6.56 %
4,500,001 JPY - 5,000,000 JPY	967	2.84 %	2,909,692,049 JPY	5.21 %
5,000,001 JPY - 6,000,000 JPY	962	2.82 %	3,417,602,627 JPY	6.12 %
6,000,001 JPY - 7,000,000 JPY	466	1.37 %	1,875,441,127 JPY	3.36 %
7,000,001 JPY - 8,000,000 JPY	231	0.68 %	1,066,509,466 JPY	1.91 %
8,000,001 JPY - 9,000,000 JPY	110	0.32 %	562,983,176 JPY	1.01 %
9,000,001 JPY - 10,000,000 JPY	69	0.20 %	398,738,705 JPY	0.71 %
>= 10,000,001 JPY	82	0.24 %	432,215,064 JPY	0.77 %
Total	34,059	100.00 %	55,819,415,473 JPY	100.00 %

Statistics

Minimum Original Principal Balance	100,000 JPY
Maximum Original Principal Balance	25,500,000 JPY
Average Original Principal Balance	2,654,012 JPY

Distribution by Interest Rate paid by the Obligor

Interest Rate paid by the Obligor	Number of Loans	Percentage of Loans	Outstanding Discounted Principal Balance	Percentage of Balance
< 0.900 %	4,547	13.35 %	7,991,732,378 JPY	14.32 %
0.900 % < 1.500 %	6,032	17.71 %	11,305,741,441 JPY	20.25 %
1.500 % < 2.000 %	8,366	24.56 %	15,608,022,702 JPY	27.96 %
2.000 % < 2.500 %	439	1.29 %	569,254,969 JPY	1.02 %
2.500 % < 3.000 %	7,690	22.58 %	11,999,922,951 JPY	21.50 %
3.000 % < 3.500 %	1,250	3.67 %	1,003,249,232 JPY	1.80 %
3.500 % < 4.000 %	5,632	16.54 %	7,209,901,666 JPY	12.92 %
4.000 % < 4.500 %	101	0.30 %	130,754,038 JPY	0.23 %
4.500 % < 5.000 %	2	0.01 %	836,096 JPY	0.00 %
5.000 % or more	0	0.00 %	0 JPY	0.00 %
Total	34,059	100.00 %	55,819,415,473 JPY	100.00 %

Statistics	
Minimum Interest Rate	0.00 %
Maximum Interest Rate	4.59 %
Weighted Average Interest Rate	1.96 %

Distribution by Original Term

Length of Original Term (months)	Number of Loans	Percentage of Loans	Outstanding Discounted Principal Balance	Percentage of Balance
6 - 12	32	0.09 %	7,078,068 JPY	0.01 %
13 - 18	48	0.14 %	10,063,803 JPY	0.02 %
19 - 24	933	2.74 %	373,853,462 JPY	0.67 %
25 - 30	115	0.34 %	42,984,595 JPY	0.08 %
31 - 36	16,859	49.50 %	29,321,460,132 JPY	52.53 %
37 - 42	81	0.24 %	56,317,891 JPY	0.10 %
43 - 48	1,579	4.64 %	1,733,946,217 JPY	3.11 %
49 - 54	31	0.09 %	29,689,994 JPY	0.05 %
55 - 60	13,170	38.67 %	22,073,100,506 JPY	39.54 %
61 - 66	29	0.09 %	41,555,251 JPY	0.07 %
67 - 72	924	2.71 %	1,533,562,715 JPY	2.75 %
73 - 84	258	0.76 %	595,802,839 JPY	1.07 %
Total	34,059	100.00 %	55,819,415,473 JPY	100.00 %

Statistics	
Minimum Original Term in months	10
Maximum Original Term in months	84
Weighted Average Original Term in months	47.31

Distribution by Remaining Term

Length of Remaining Term (months)	Number of Loans	Percentage of Loans	Outstanding Discounted Principal Balance	Percentage of Balance
<= 12	11,385	33.43 %	14,975,272,849 JPY	26.83 %
13 - 18	7,296	21.42 %	12,300,431,863 JPY	22.04 %
19 - 24	3,972	11.66 %	6,403,674,319 JPY	11.47 %
25 - 30	2,952	8.67 %	5,063,051,056 JPY	9.07 %
31 - 36	2,593	7.61 %	4,404,886,068 JPY	7.89 %
37 - 42	2,881	8.46 %	5,812,682,417 JPY	10.41 %
43 - 48	1,828	5.37 %	4,077,721,818 JPY	7.31 %
49 - 54	925	2.72 %	2,192,269,396 JPY	3.93 %
55 - 60	105	0.31 %	241,300,074 JPY	0.43 %
61 - 66	105	0.31 %	294,135,084 JPY	0.53 %
67 - 72	11	0.03 %	30,662,770 JPY	0.05 %
73 - 84	6	0.02 %	23,327,759 JPY	0.04 %
Total	34,059	100.00 %	55,819,415,473 JPY	100.00 %

Statistics	
Minimum Remaining Term in months	1
Maximum Remaining Term in months	77
Weighted Average Remaining Term in months	23.23

Distribution by Seasoning

Seasoning (months)	Number of Loans	Percentage of Loans	Outstanding Discounted Principal Balance	Percentage of Balance
<= 12	2,040	5.99 %	4,638,267,348 JPY	8.31 %
13 - 18	4,712	13.83 %	9,419,301,874 JPY	16.87 %
19 - 24	9,621	28.25 %	17,042,434,561 JPY	30.53 %
25 - 30	8,874	26.05 %	13,970,569,132 JPY	25.03 %
31 - 36	4,212	12.37 %	5,770,629,124 JPY	10.34 %
37 - 42	2,326	6.83 %	2,951,959,771 JPY	5.29 %
43 - 48	1,224	3.59 %	1,259,877,686 JPY	2.26 %
49 - 54	683	2.01 %	574,387,044 JPY	1.03 %
55 - 60	300	0.88 %	167,620,715 JPY	0.30 %
61 - 66	45	0.13 %	19,582,777 JPY	0.04 %
67 - 72	22	0.06 %	4,785,441 JPY	0.01 %
73 - 84	0	0.00 %	0 JPY	0.00 %
Total	34,059	100.00 %	55,819,415,473 JPY	100.00 %

Statistics	
Minimum Seasoning in months	6
Maximum Seasoning in months	71
Weighted Average Seasoning in months	24.08

Distribution by Type of Car
Type of Car

Type of Car	Number of Loans	Percentage of Loans	Outstanding Discounted Principal Balance	Percentage of Balance
New	24,252	71.21 %	44,444,263,392 JPY	79.62 %
Used	9,807	28.79 %	11,375,152,081 JPY	20.38 %
Total	34,059	100.00 %	55,819,415,473 JPY	100.00 %

Type of Car: Only Balloon Loans

Type of Car	Number of Loans	Percentage of Loans	Outstanding Discounted Principal Balance	Percentage of Balance
New	22,090	82.94 %	41,888,446,289 JPY	86.31 %
Used	4,544	17.06 %	6,644,555,288 JPY	13.69 %
Total	26,634	100.00 %	48,533,001,577 JPY	100.00 %

Type of Car: Only Equal Instalment Loans

Type of Car	Number of Loans	Percentage of Loans	Outstanding Discounted Principal Balance	Percentage of Balance
New	2,162	29.12 %	2,555,817,103 JPY	35.08 %
Used	5,263	70.88 %	4,730,596,793 JPY	64.92 %
Total	7,425	100.00 %	7,286,413,896 JPY	100.00 %

Distribution by Brand and Model

Make	Model	Number of Loans	Percentage of Loans	Outstanding Discounted Principal Balance	Percentage of Balance
Audi	A1	1,127	3.31 %	1,439,843,383 JPY	2.58 %
	A3	2,968	8.71 %	5,030,352,425 JPY	9.01 %
	A4	2,391	7.02 %	4,811,916,808 JPY	8.62 %
	A5	631	1.85 %	1,453,395,221 JPY	2.60 %
	A6	993	2.92 %	2,544,653,443 JPY	4.56 %
	A7	274	0.80 %	952,804,417 JPY	1.71 %
	A8	110	0.32 %	407,348,025 JPY	0.73 %
	S1	127	0.37 %	274,351,947 JPY	0.49 %
	S3	459	1.35 %	1,218,324,070 JPY	2.18 %
	S4	90	0.26 %	241,667,409 JPY	0.43 %
	S5	60	0.18 %	194,445,459 JPY	0.35 %
	S6	31	0.09 %	118,592,073 JPY	0.21 %
	S7	21	0.06 %	92,880,044 JPY	0.17 %
	S8	18	0.05 %	78,431,016 JPY	0.14 %
	RS3	11	0.03 %	49,108,194 JPY	0.09 %
	RS4	15	0.04 %	54,197,333 JPY	0.10 %
	RS5	14	0.04 %	66,888,109 JPY	0.12 %
	RS6	13	0.04 %	50,222,902 JPY	0.09 %
	RS7	3	0.01 %	16,183,739 JPY	0.03 %
	Q3	1,055	3.10 %	2,342,843,590 JPY	4.20 %
	Q5	712	2.09 %	2,081,071,913 JPY	3.73 %
	Q7	76	0.22 %	260,430,295 JPY	0.47 %
	RSQ3	14	0.04 %	50,884,543 JPY	0.09 %
	TT	652	1.91 %	1,531,190,390 JPY	2.74 %
R8	13	0.04 %	69,370,350 JPY	0.12 %	
AUDI OTHERS	0	0.00 %	0 JPY	0.00 %	
Subtotal		11,878	34.87 %	25,431,397,098 JPY	45.56 %
Bentley	ARNAGE	1	0.00 %	314,267 JPY	0.00 %
	AZURE	0	0.00 %	0 JPY	0.00 %
	CONTINENTAL	14	0.04 %	50,901,702 JPY	0.09 %
	MULSANNE	0	0.00 %	0 JPY	0.00 %
	FLYING SPUR	0	0.00 %	0 JPY	0.00 %
	BENTLEY OTHERS	0	0.00 %	0 JPY	0.00 %
	Subtotal		15	0.04 %	51,215,969 JPY
Lamborghini	AVENTADOR	0	0.00 %	0 JPY	0.00 %
	DIABLO	0	0.00 %	0 JPY	0.00 %
	GALLARDO	3	0.01 %	12,052,324 JPY	0.02 %
	MULCIELAGO	0	0.00 %	0 JPY	0.00 %
	LAMBORGHINI OTHERS	0	0.00 %	0 JPY	0.00 %
	Subtotal		3	0.01 %	12,052,324 JPY
VW	BEETLE	2,539	7.45 %	3,479,215,689 JPY	6.23 %
	BORA	0	0.00 %	0 JPY	0.00 %
	EOS	6	0.02 %	2,190,963 JPY	0.00 %
	GOLF	8,954	26.29 %	13,101,493,381 JPY	23.47 %
	JETTA	21	0.06 %	9,175,964 JPY	0.02 %
	LUPO	0	0.00 %	0 JPY	0.00 %
	PASSAT	1,529	4.49 %	2,862,879,354 JPY	5.13 %
	POLO	4,483	13.16 %	4,973,093,519 JPY	8.91 %
	SCIROCCO	64	0.19 %	70,348,627 JPY	0.13 %
	SHARAN	737	2.16 %	1,316,432,616 JPY	2.36 %
	TIGUAN	652	1.91 %	995,469,685 JPY	1.78 %
	TOUAREG	114	0.33 %	264,565,075 JPY	0.47 %
	TOURAN	1,092	3.21 %	1,624,926,639 JPY	2.91 %
	UP	1,944	5.71 %	1,601,625,845 JPY	2.87 %
	VENTO	0	0.00 %	0 JPY	0.00 %
VW OTHERS	1	0.00 %	915,153 JPY	0.00 %	
Subtotal		22,136	64.99 %	30,302,332,510 JPY	54.29 %
Non VW Group Vehicles		27	0.08 %	22,417,572 JPY	0.04 %
Subtotal		27	0.08 %	22,417,572 JPY	0.04 %
Total		34,059	100.00 %	55,819,415,473 JPY	100.00 %

Geographic Distribution by Prefecture

Prefecture	Number of Loans	Percentage of Loans	Outstanding Discounted Principal Balance	Percentage of Balance
Tokyo	5,087	14.94 %	9,418,984,766 JPY	16.87 %
Kanagawa	3,416	10.03 %	5,840,211,605 JPY	10.46 %
Aichi	2,449	7.19 %	3,846,831,891 JPY	6.89 %
Osaka	2,064	6.06 %	3,494,377,846 JPY	6.26 %
Saitama	2,071	6.08 %	3,374,977,301 JPY	6.05 %
Hyogo	1,502	4.41 %	2,429,038,329 JPY	4.35 %
Hokkaido	1,345	3.95 %	2,409,282,254 JPY	4.32 %
Fukuoka	1,375	4.04 %	2,287,998,933 JPY	4.10 %
Chiba	1,379	4.05 %	2,212,301,737 JPY	3.96 %
Shizuoka	1,015	2.98 %	1,595,633,847 JPY	2.86 %
Ibaraki	1,025	3.01 %	1,517,107,187 JPY	2.72 %
Hiroshima	791	2.32 %	1,170,895,766 JPY	2.10 %
Kyoto	643	1.89 %	1,120,514,498 JPY	2.01 %
Tochigi	673	1.98 %	1,073,017,503 JPY	1.92 %
Gunma	691	2.03 %	959,901,006 JPY	1.72 %
Okayama	596	1.75 %	958,017,581 JPY	1.72 %
Miyagi	630	1.85 %	897,498,161 JPY	1.61 %
Mie	487	1.43 %	761,471,180 JPY	1.36 %
Nagano	500	1.47 %	721,042,929 JPY	1.29 %
Gifu	486	1.43 %	711,989,280 JPY	1.28 %
Fukushima	374	1.10 %	566,552,722 JPY	1.01 %
Niigata	377	1.11 %	546,346,769 JPY	0.98 %
Nara	311	0.91 %	542,662,940 JPY	0.97 %
Yamaguchi	349	1.02 %	515,082,372 JPY	0.92 %
Oita	288	0.85 %	476,496,274 JPY	0.85 %
Shiga	278	0.82 %	442,098,844 JPY	0.79 %
Ishikawa	275	0.81 %	426,146,850 JPY	0.76 %
Kagawa	252	0.74 %	409,058,099 JPY	0.73 %
Fukui	241	0.71 %	393,949,332 JPY	0.71 %
Yamanashi	245	0.72 %	380,679,490 JPY	0.68 %
Yamagata	254	0.75 %	377,207,996 JPY	0.68 %
Kumamoto	258	0.76 %	371,533,018 JPY	0.67 %
Toyama	247	0.73 %	357,872,750 JPY	0.64 %
Kagoshima	230	0.68 %	351,435,132 JPY	0.63 %
Wakayama	198	0.58 %	327,447,319 JPY	0.59 %
Nagasaki	164	0.48 %	280,753,993 JPY	0.50 %
Tokushima	176	0.52 %	267,936,723 JPY	0.48 %
Aomori	163	0.48 %	241,448,898 JPY	0.43 %
Iwate	158	0.46 %	240,704,970 JPY	0.43 %
Miyazaki	157	0.46 %	238,810,241 JPY	0.43 %
Ehime	182	0.53 %	232,005,101 JPY	0.42 %
Tottori	128	0.38 %	216,329,260 JPY	0.39 %
Shimane	129	0.38 %	212,701,407 JPY	0.38 %
Akita	133	0.39 %	210,959,508 JPY	0.38 %
Saga	126	0.37 %	191,214,781 JPY	0.34 %
Okinawa	65	0.19 %	104,372,634 JPY	0.19 %
Kouchi	76	0.22 %	96,514,450 JPY	0.17 %
Total	34,059	100.00 %	55,819,415,473 JPY	100.00 %

Distribution by Obligor Concentration

Distribution of Loan Contracts and Vehicles per Obligor

Contract Concentration	Number of Customers	Percentage of Customers	Number of Loans	Percentage of Loans	Outstanding Discounted Principal Balance	Percentage of Balance
1	32,946	97.17 %	32,946	96.73 %	53,626,387,831 JPY	96.07 %
2	891	2.63 %	1,023	3.00 %	1,992,168,962 JPY	3.57 %
3	58	0.17 %	74	0.22 %	159,943,166 JPY	0.29 %
4	6	0.02 %	8	0.02 %	19,856,823 JPY	0.04 %
5	2	0.01 %	6	0.02 %	17,919,433 JPY	0.03 %
6 - 10	1	0.00 %	2	0.01 %	3,139,258 JPY	0.01 %
11 or more	0	0.00 %	0	0.00 %	0 JPY	0.00 %
Total	33,904	100.00 %	34,059	100.00 %	55,819,415,473 JPY	100.00 %

Top 20 Obligor

Number	Number of Contracts	Outstanding Discounted Principal Balance	Percentage of Balance
1	2	10,806,687 JPY	0.02 %
2	2	10,662,688 JPY	0.02 %
3	2	10,651,875 JPY	0.02 %
4	4	10,017,130 JPY	0.02 %
5	2	9,633,458 JPY	0.02 %
6	2	9,505,546 JPY	0.02 %
7	2	9,279,391 JPY	0.02 %
8	1	8,880,937 JPY	0.02 %
9	2	8,824,794 JPY	0.02 %
10	2	8,791,915 JPY	0.02 %
11	1	8,760,705 JPY	0.02 %
12	1	8,755,511 JPY	0.02 %
13	1	8,708,632 JPY	0.02 %
14	2	8,697,938 JPY	0.02 %
15	2	8,691,161 JPY	0.02 %
16	2	8,493,000 JPY	0.02 %
17	1	8,380,469 JPY	0.02 %
18	1	8,318,634 JPY	0.01 %
19	1	8,315,376 JPY	0.01 %
20	1	8,254,786 JPY	0.01 %
Total 1 -20	34	182,430,633 JPY	0.33 %

Remarks:

Figures above are calculated based on each of the Sub-Servicers respectively and not across both of the Sub-Servicers.

Distribution by Contract Start Month

Origination Month	Number of Loans	Percentage of Loans	Outstanding Discounted Principal Balance	Percentage of Balance
06.2011	2	0.01 %	213,875 JPY	0.00 %
07.2011	3	0.01 %	519,448 JPY	0.00 %
08.2011	5	0.01 %	1,081,813 JPY	0.00 %
09.2011	9	0.03 %	2,199,760 JPY	0.00 %
10.2011	3	0.01 %	770,545 JPY	0.00 %
11.2011	6	0.02 %	1,394,455 JPY	0.00 %
12.2011	7	0.02 %	3,209,373 JPY	0.01 %
01.2012	6	0.02 %	2,107,060 JPY	0.00 %
02.2012	11	0.03 %	6,125,888 JPY	0.01 %
03.2012	13	0.04 %	6,045,117 JPY	0.01 %
04.2012	2	0.01 %	700,884 JPY	0.00 %
05.2012	5	0.01 %	3,616,604 JPY	0.01 %
06.2012	72	0.21 %	31,607,745 JPY	0.06 %
07.2012	43	0.13 %	23,556,588 JPY	0.04 %
08.2012	42	0.12 %	22,819,680 JPY	0.04 %
09.2012	71	0.21 %	49,171,504 JPY	0.09 %
10.2012	67	0.20 %	36,848,594 JPY	0.07 %
11.2012	80	0.23 %	69,908,118 JPY	0.13 %
12.2012	118	0.35 %	90,497,483 JPY	0.16 %
01.2013	92	0.27 %	69,551,760 JPY	0.12 %
02.2013	105	0.31 %	89,495,584 JPY	0.16 %
03.2013	161	0.47 %	147,165,003 JPY	0.26 %
04.2013	127	0.37 %	107,769,096 JPY	0.19 %
05.2013	167	0.49 %	151,546,512 JPY	0.27 %
06.2013	264	0.78 %	244,706,265 JPY	0.44 %
07.2013	200	0.59 %	193,966,354 JPY	0.35 %
08.2013	188	0.55 %	211,125,432 JPY	0.38 %
09.2013	230	0.68 %	251,900,207 JPY	0.45 %
10.2013	175	0.51 %	206,632,916 JPY	0.37 %
11.2013	217	0.64 %	263,409,790 JPY	0.47 %
12.2013	387	1.14 %	483,410,812 JPY	0.87 %
01.2014	366	1.07 %	437,196,971 JPY	0.78 %
02.2014	423	1.24 %	544,518,043 JPY	0.98 %
03.2014	700	2.06 %	921,190,998 JPY	1.65 %
04.2014	233	0.68 %	302,233,157 JPY	0.54 %
05.2014	290	0.85 %	369,242,607 JPY	0.66 %
06.2014	773	2.27 %	959,782,843 JPY	1.72 %
07.2014	643	1.89 %	851,423,701 JPY	1.53 %
08.2014	624	1.83 %	857,346,969 JPY	1.54 %
09.2014	1,121	3.29 %	1,614,176,385 JPY	2.89 %
10.2014	761	2.23 %	1,118,656,619 JPY	2.00 %
11.2014	947	2.78 %	1,437,105,355 JPY	2.57 %
12.2014	1,408	4.13 %	2,216,100,249 JPY	3.97 %
01.2015	1,167	3.43 %	1,773,854,097 JPY	3.18 %
02.2015	1,648	4.84 %	2,511,394,962 JPY	4.50 %
03.2015	2,801	8.22 %	4,496,515,565 JPY	8.06 %
04.2015	903	2.65 %	1,535,598,904 JPY	2.75 %
05.2015	1,376	4.04 %	2,358,660,664 JPY	4.23 %
06.2015	1,881	5.52 %	3,212,248,219 JPY	5.75 %
07.2015	1,409	4.14 %	2,321,109,980 JPY	4.16 %
08.2015	1,498	4.40 %	2,622,748,046 JPY	4.70 %
09.2015	2,236	6.57 %	4,224,491,168 JPY	7.57 %
10.2015	1,221	3.58 %	2,303,176,484 JPY	4.13 %
11.2015	1,457	4.28 %	2,852,755,189 JPY	5.11 %
12.2015	670	1.97 %	1,295,111,788 JPY	2.32 %
01.2016	574	1.69 %	1,145,967,586 JPY	2.05 %
02.2016	684	2.01 %	1,368,673,098 JPY	2.45 %
03.2016	938	2.75 %	1,933,154,700 JPY	3.46 %
04.2016	389	1.14 %	823,639,513 JPY	1.48 %
05.2016	418	1.23 %	894,477,525 JPY	1.60 %
06.2016	476	1.40 %	1,021,621,627 JPY	1.83 %
07.2016	321	0.94 %	704,245,954 JPY	1.26 %
08.2016	289	0.85 %	696,663,820 JPY	1.25 %
09.2016	346	1.02 %	833,905,718 JPY	1.49 %
10.2016	131	0.38 %	334,871,098 JPY	0.60 %
11.2016	59	0.17 %	152,481,606 JPY	0.27 %
12.2016	0	0.00 %	0 JPY	0.00 %
01.2017	0	0.00 %	0 JPY	0.00 %
02.2017	0	0.00 %	0 JPY	0.00 %
03.2017	0	0.00 %	0 JPY	0.00 %
04.2017	0	0.00 %	0 JPY	0.00 %
05.2017	0	0.00 %	0 JPY	0.00 %
Total	34,059	100.00 %	55,819,415,473 JPY	100.00 %

Distribution by Contract End Month

Maturity Month	Number of Loans	Percentage of Loans	Outstanding Discounted Principal Balance	Percentage of Balance
06.2017	582	1.71 %	514,890,524 JPY	0.92 %
07.2017	471	1.38 %	443,780,730 JPY	0.80 %
08.2017	465	1.37 %	444,226,412 JPY	0.80 %
09.2017	883	2.59 %	1,010,233,805 JPY	1.81 %
10.2017	594	1.74 %	675,094,876 JPY	1.21 %
11.2017	784	2.30 %	975,936,814 JPY	1.75 %
12.2017	1,172	3.44 %	1,596,995,365 JPY	2.86 %
01.2018	906	2.66 %	1,172,450,742 JPY	2.10 %
02.2018	1,297	3.81 %	1,792,607,570 JPY	3.21 %
03.2018	2,403	7.06 %	3,555,985,986 JPY	6.37 %
04.2018	731	2.15 %	1,097,895,534 JPY	1.97 %
05.2018	1,097	3.22 %	1,695,174,491 JPY	3.04 %
06.2018	1,574	4.62 %	2,481,034,648 JPY	4.44 %
07.2018	1,089	3.20 %	1,683,798,536 JPY	3.02 %
08.2018	1,122	3.29 %	1,831,036,743 JPY	3.28 %
09.2018	1,664	4.89 %	2,955,370,110 JPY	5.29 %
10.2018	851	2.50 %	1,508,915,613 JPY	2.70 %
11.2018	996	2.92 %	1,840,276,213 JPY	3.30 %
12.2018	714	2.10 %	1,200,457,978 JPY	2.15 %
01.2019	596	1.75 %	909,398,871 JPY	1.63 %
02.2019	723	2.12 %	1,137,348,546 JPY	2.04 %
03.2019	1,061	3.12 %	1,720,619,754 JPY	3.08 %
04.2019	410	1.20 %	694,018,901 JPY	1.24 %
05.2019	468	1.37 %	741,830,269 JPY	1.33 %
06.2019	619	1.82 %	1,019,217,306 JPY	1.83 %
07.2019	454	1.33 %	770,483,000 JPY	1.38 %
08.2019	430	1.26 %	743,881,500 JPY	1.33 %
09.2019	642	1.88 %	1,183,562,071 JPY	2.12 %
10.2019	402	1.18 %	681,637,428 JPY	1.22 %
11.2019	405	1.19 %	664,269,751 JPY	1.19 %
12.2019	441	1.29 %	722,259,989 JPY	1.29 %
01.2020	365	1.07 %	627,349,692 JPY	1.12 %
02.2020	466	1.37 %	766,835,082 JPY	1.37 %
03.2020	616	1.81 %	1,059,305,015 JPY	1.90 %
04.2020	300	0.88 %	516,298,518 JPY	0.92 %
05.2020	405	1.19 %	712,837,772 JPY	1.28 %
06.2020	431	1.27 %	816,733,156 JPY	1.46 %
07.2020	417	1.22 %	749,582,648 JPY	1.34 %
08.2020	461	1.35 %	927,736,555 JPY	1.66 %
09.2020	643	1.89 %	1,339,689,247 JPY	2.40 %
10.2020	415	1.22 %	879,410,666 JPY	1.58 %
11.2020	514	1.51 %	1,099,530,145 JPY	1.97 %
12.2020	242	0.71 %	514,293,056 JPY	0.92 %
01.2021	309	0.91 %	680,415,392 JPY	1.22 %
02.2021	352	1.03 %	780,925,456 JPY	1.40 %
03.2021	481	1.41 %	1,103,187,227 JPY	1.98 %
04.2021	184	0.54 %	411,562,581 JPY	0.74 %
05.2021	260	0.76 %	587,338,106 JPY	1.05 %
06.2021	245	0.72 %	566,551,538 JPY	1.01 %
07.2021	180	0.53 %	411,014,389 JPY	0.74 %
08.2021	166	0.49 %	419,144,602 JPY	0.75 %
09.2021	184	0.54 %	424,195,709 JPY	0.76 %
10.2021	92	0.27 %	219,891,911 JPY	0.39 %
11.2021	58	0.17 %	151,471,247 JPY	0.27 %
12.2021	17	0.05 %	40,713,553 JPY	0.07 %
01.2022	18	0.05 %	32,680,399 JPY	0.06 %
02.2022	17	0.05 %	39,112,284 JPY	0.07 %
03.2022	20	0.06 %	53,543,686 JPY	0.10 %
04.2022	21	0.06 %	46,837,358 JPY	0.08 %
05.2022	12	0.04 %	28,412,794 JPY	0.05 %
06.2022	18	0.05 %	58,639,093 JPY	0.11 %
07.2022	14	0.04 %	34,136,569 JPY	0.06 %
08.2022	15	0.04 %	46,399,400 JPY	0.08 %
09.2022	27	0.08 %	64,314,524 JPY	0.12 %
10.2022	14	0.04 %	35,909,189 JPY	0.06 %
11.2022	17	0.05 %	54,736,309 JPY	0.10 %
12.2022	7	0.02 %	18,555,131 JPY	0.03 %
01.2023	2	0.01 %	7,398,314 JPY	0.01 %
02.2023	1	0.00 %	1,639,179 JPY	0.00 %
03.2023	1	0.00 %	3,070,146 JPY	0.01 %
04.2023	0	0.00 %	0 JPY	0.00 %
05.2023	0	0.00 %	0 JPY	0.00 %
06.2023	2	0.01 %	8,688,296 JPY	0.02 %
07.2023	1	0.00 %	2,711,982 JPY	0.00 %
08.2023	0	0.00 %	0 JPY	0.00 %
09.2023	2	0.01 %	7,606,007 JPY	0.01 %
10.2023	1	0.00 %	4,321,474 JPY	0.01 %
Total	34,059	100.00 %	55,819,415,473 JPY	100.00 %

Distribution by Monthly Payment

Monthly Payment	Number of Loans	Percentage of Loans	Outstanding Discounted Principal Balance	Percentage of Balance
<= 10,000 JPY	1,821	5.35 %	2,016,050,990 JPY	3.61 %
10,001 JPY - 20,000 JPY	6,388	18.76 %	7,499,461,549 JPY	13.44 %
20,001 JPY - 30,000 JPY	8,950	26.28 %	12,142,687,300 JPY	21.75 %
30,001 JPY - 40,000 JPY	6,673	19.59 %	10,719,559,873 JPY	19.20 %
40,001 JPY - 50,000 JPY	3,950	11.60 %	7,464,072,227 JPY	13.37 %
50,001 JPY - 60,000 JPY	2,477	7.27 %	5,230,344,744 JPY	9.37 %
60,001 JPY - 70,000 JPY	1,280	3.76 %	3,033,658,223 JPY	5.43 %
70,001 JPY - 80,000 JPY	719	2.11 %	1,822,854,866 JPY	3.27 %
80,001 JPY - 90,000 JPY	483	1.42 %	1,323,320,154 JPY	2.37 %
90,001 JPY - 100,000 JPY	426	1.25 %	1,285,675,702 JPY	2.30 %
100,001 JPY - 110,000 JPY	241	0.71 %	750,653,613 JPY	1.34 %
110,001 JPY - 120,000 JPY	167	0.49 %	573,241,714 JPY	1.03 %
120,001 JPY - 130,000 JPY	123	0.36 %	461,836,407 JPY	0.83 %
130,001 JPY - 140,000 JPY	84	0.25 %	337,237,292 JPY	0.60 %
140,001 JPY - 150,000 JPY	67	0.20 %	261,055,367 JPY	0.47 %
>= 150,001 JPY	210	0.62 %	897,705,452 JPY	1.61 %
Total	34,059	100.00 %	55,819,415,473 JPY	100.00 %

Distribution by Bonus Payment

Bonus Payment	Number of Loans	Percentage of Loans	Outstanding Discounted Principal Balance	Percentage of Balance
No Bonus Payment	20,675	60.70 %	33,039,966,546 JPY	59.19 %
1 JPY - 25,000 JPY	258	0.76 %	310,491,337 JPY	0.56 %
25,001 JPY - 50,000 JPY	3,332	9.78 %	4,461,701,581 JPY	7.99 %
50,001 JPY - 75,000 JPY	1,156	3.39 %	1,688,372,578 JPY	3.02 %
75,001 JPY - 100,000 JPY	4,629	13.59 %	7,653,098,624 JPY	13.71 %
100,001 JPY - 125,000 JPY	583	1.71 %	1,043,982,123 JPY	1.87 %
125,001 JPY - 150,000 JPY	1,813	5.32 %	3,684,574,709 JPY	6.60 %
150,001 JPY - 175,000 JPY	212	0.62 %	449,705,550 JPY	0.81 %
175,001 JPY - 200,000 JPY	899	2.64 %	2,104,058,052 JPY	3.77 %
200,001 JPY - 225,000 JPY	65	0.19 %	150,590,319 JPY	0.27 %
225,001 JPY - 250,000 JPY	209	0.61 %	555,367,612 JPY	0.99 %
250,001 JPY - 275,000 JPY	18	0.05 %	47,608,227 JPY	0.09 %
275,001 JPY - 300,000 JPY	138	0.41 %	392,619,615 JPY	0.70 %
300,001 JPY - 325,000 JPY	9	0.03 %	30,547,604 JPY	0.05 %
325,001 JPY - 350,000 JPY	23	0.07 %	73,995,621 JPY	0.13 %
350,001 JPY - 375,000 JPY	4	0.01 %	10,090,632 JPY	0.02 %
375,001 JPY - 400,000 JPY	21	0.06 %	65,412,073 JPY	0.12 %
400,001 JPY - 425,000 JPY	1	0.00 %	4,234,830 JPY	0.01 %
425,001 JPY - 450,000 JPY	1	0.00 %	4,869,168 JPY	0.01 %
450,001 JPY - 475,000 JPY	0	0.00 %	0 JPY	0.00 %
475,001 JPY - 500,000 JPY	10	0.03 %	32,987,351 JPY	0.06 %
500,001 JPY or more	3	0.01 %	15,141,321 JPY	0.03 %
Total	34,059	100.00 %	55,819,415,473 JPY	100.00 %

Distribution by Motor Type

Motor Type	Number of Loans	Percentage of Loans	Outstanding Discounted Principal Balance	Percentage of Balance
EA 189	0	0.00 %	0 JPY	0.00 %
Other	34,059	100.00 %	55,819,415,473 JPY	100.00 %
Total	34,059	100.00 %	55,819,415,473 JPY	100.00 %

Disclaimer

This presentation contains forward-looking statements and information on the business development of the Volkswagen Group. These statements may be spoken or written and can be recognized by terms such as "expects", "anticipates", "intends", "plans", "believes", "seeks", "estimates", "will", or words with similar meaning. These statements are based on assumptions relating to the development of the economies of individual countries, and in particular of the automotive industry, which we have made on the basis of the information available to us and which we consider to be realistic at the time of going to press. The estimates given involve a degree of risk, and the actual developments may differ from those forecast.

Consequently, any unexpected fall in demand or economic stagnation in our key sales markets, such as in Western Europe (and especially Germany) or in the USA, Brazil or China, will have a corresponding impact on the development of our business. The same applies in the event of a significant shift in current exchange rates relative to the US dollar, sterling, yen, Brazilian real, Chinese renminbi and Czech koruna.

If any of these or other risks occur, or if the assumptions underlying any of these statements prove incorrect, the actual results may significantly differ from those expressed or implied by such statements.

We do not update forward-looking statements retrospectively. Such statements are valid on the date of publication and can be superceded.

This information does not constitute an offer to exchange or sell or an offer to exchange or buy any securities.