

Deal Name: Driver Japan five

Originator: Volkswagen Financial Services Japan Ltd.
Gotenyama Trust Tower 17F
7-35 Kitashinagawa 4-chome, Shinagawa-ku
Tokyo 140-0001, Japan

Reporting Entity: Volkswagen Financial Services Japan Ltd.
Treasury Dept.
Gotenyama Trust Tower 17F
7-35 Kitashinagawa 4-chome, Shinagawa-ku
Tokyo 140-0001, Japan
Tel No.: +81(0)3-5792-7261
Fax No.: +81(0)3-3280-7365
E-mail: vwfsjp.abs@vwfs.com

**Trustor of the First Trust:
Servicer:** Volkswagen Financial Services Japan Ltd.

**Trustee of the First Trust:
Trustee of the Second Trust:** Shinsei Trust & Banking Co., Ltd.
Nihonbashi Muromachi Nomura Building
4-3, Nihonbashi-muromachi 2-chome, Chuo-ku,
Tokyo 103-0022, Japan
Trust Management Division
Tel No.: +81(0)3-6880-6300
Fax No.: +81(0)3-4560-2756
E-mail: OpsKinsai@shinseitrust.com



Contents

Page	Tables of Contents
1	Front Page
2	Contents
3	Deal Overview
4	Deal Overview: Counterparties I
5	Deal Overview: Counterparties II
6	Information regarding the TBI and ABL to the Second Trust
7	Pool Information
8	Available Distribution
9	Waterfall
10	Credit Enhancement
11	Cumulative Gross Loss Ratio & Performance Trigger
12	Cumulative Gross Loss Ratio & Performance Trigger (Chart)
13	Default & Delinquencies
14	Run Out Schedule (Previous)
15	Run Out Schedule
16	Expected Amortization to the Second Trust
17	Sub-Servicer
18	Brand
19	New and Used
20	Product Type
21	RV
22	Brand New and Used
23	Customer Type
24	Outstanding Discounted Principal Balance
25	Original Principal Amount
26	Interest Rate paid by the Obligor
27	Original Term
28	Remaining Term
29	Seasoning
30	Type of Car
31	Brand and Model
32	Geographic Dist. by Prefecture
33	Obligor Concentration
34	Contract Start Month
35	Contract End Month
36	Monthly payment
37	Bonus payment
38	Mortor Type

Deal Overview

Cut Off Date:	2016/02/10		
Trust Commencement Date:	2016/02/24	Legal Maturity of the First Trust:	2024/06/27
Monthly Period:	2016/09/11	to	2016/10/10
Reporting Date:	2016/10/17		
Reporting Frequency:	monthly		
Period No.:	8		
Remittance Date:	2016/10/24		
Advance Payment Date:	2016/10/24		
Cash Adjustment Date:	2016/10/24		
Additional Entrustment Date:	2016/10/26		
Trust Calculation Date:	2016/10/26		
Trust Calculation Period:	2016/09/27	to	2016/10/26
First Trust Payment Date:	2016/10/27		
Second Trust Payment Date:	2016/10/28		
Interest Calculation Period:	2016/09/29	to	2016/10/28
Next Reporting Date:	2016/11/17		

Pool information at the Initial Cut off Date

	Number of Contracts	Outstanding Discounted Principal Balance	Outstanding Nominal Balance
Outstanding Pool	31,976	64,176,234,995 JPY	66,824,671,200 JPY

Credit Type	Percentage of Loans	Outstanding Discounted Principal Balance	Percentage of Balance
Balloon	75.37 %	53,826,542,156 JPY	83.87 %
Equal Instalment Loan	24.63 %	10,349,692,839 JPY	16.13 %
Total	100.00 %	64,176,234,995 JPY	100.00 %

Type of Car	Percentage of Loans	Outstanding Discounted Principal Balance	Percentage of Balance
New	72.19 %	50,995,472,631 JPY	79.46 %
Used	27.81 %	13,180,762,364 JPY	20.54 %
Total	100.00 %	64,176,234,995 JPY	100.00 %

Deal Overview: Counterparties I

Joint Lead Managers:

Merrill Lynch Japan Securities Co., Ltd.
 Nihonbashi 1-chome Building,
 1-4-1, Nihonbashi,
 Chuo-ku,
 Tokyo 103-8230, Japan

Shinsei Securities Co., Ltd.
 Nihonbashi Muromachi Nomura Building,
 2-4-3, Nihonbashi-muromachi,
 Chuo-ku,
 Tokyo 103-0022, Japan

Trust Management Account Bank:

The Bank of Tokyo-Mitsubishi UFJ, Ltd.
 4-2 Toranomom 1-chome,
 Minato-ku
 Tokyo 105-0001, Japan

Rating								
Moody's			Fitch			R&I		
Long Term	Short Term	Outlook	Long Term	Short Term	Outlook	Long Term	Short Term	Outlook
n.a.	n.a.	n.a.	A	F1	Stable	n.a.	n.a.	n.a.
n.a.	n.a.	n.a.	n.a.	n.a.	n.a.	n.a.	n.a.	n.a.
A1	P-1	Stable	A	F1	Negative	AA-	a-1+	Stable

Originator:

Trustor of the First Trust:

Servicer:

Volkswagen Financial Services Japan Ltd.
 Gotenyama Trust Tower 17F
 7-35 Kitashinagawa 4-chome, Shinagawa-ku
 Tokyo 140-0001, Japan

Trustee of the First Trust:

Trustee of the Second Trust:

Shinsei Trust & Banking Co., Ltd.
 Attn.: Driver Japan five
 Trust Management Division

ABL Lender to the First Trust:

Trustor of the Second Trust:

Merrill Lynch Japan Securities Co., Ltd.

Seller of the Trust Beneficial

Interest of the Second Trust

Merrill Lynch Japan Securities Co., Ltd.
Shinsei Securities Co., Ltd.

Deal Overview: Counterparties II

Rating Agencies:

Moody's SF Japan K.K.

Attn.: Driver Japan five
 Structure Finance Group Monitoring Division
 5-1 Atago 2-chome, Minato-ku
 Tokyo 105-6220, Japan
 E-mail: monitor.msfi@moodys.com

Fitch Ratings Japan Limited

Attn.: Driver Japan five
 Structured Finance
 Kojimachi Crystal City East Wing 3rd Floor,
 4-8 Kōjimachi, Chiyoda-ku,
 Tokyo 102-0083, Japan
 E-mail: tokyo.surveillance@fitchratings.com

Rating and Investment Information, Inc.

Attn.: Monitoring Group Department:Structured Finance Department
 Structured Finance Department
 Nihonbashi 1-chome Mitsui Bldg.,
 4-1, Nihonbashi 1-chome, Chuo-ku
 Tokyo 103-0027, Japan
 E-mail: sfmonitor@r-i.co.jp

Rating of VW

Volkswagen Financial Services AG

Volkswagen AG

Rating								
Moody's			Fitch			R&I		
Short Term	Long Term	Outlook	Short Term	Long Term	Outlook	Short Term	Long Term	Outlook
P-1	A2	Negative	n.a.	n.a.	n.a.	n.a.	n.a.	n.a.
P-2	A3	Negative	F2	BBB+	Negative	n.a.	n.a.	n.a.

Information regarding Trust Beneficial Interest of the Second Trust & Asset Backed Loan to the Second Trust

Rating Details

	<u>TBI</u>	<u>ABL</u>
Rating at Issue Date		
Moody's	Aaa(sf)	Aaa(sf)
Fitch	AAAsf	AAAsf
R&I	AAA	AAA
Current Rating		
Moody's	Aaa(sf)	Aaa(sf)
Fitch	AAAsf	AAAsf
R&I	AAA	AAA

Information on TBI & ABL

	<u>TBI</u>	<u>ABL</u>
Initial Balance	31,000,000,000 JPY	29,000,000,000 JPY
Expected Maturity Date	2019/09/30	2019/09/30
Legal Maturity of the Second Trust	2024/06/28	2024/06/28
Payment Dates	28th	28th
Business Day Convention	Modified Following	Modified Following
Listing	None	—

Information on Interest

	<u>TBI</u>	<u>ABL</u>
Fixed/ Floating	Fixed	Fixed
Current Coupon	0.19%	0.19%
Day Count Convention	30/360	30/360

Selling Restriction

The holders of the Beneficial Interest and the ABL Lenders* are prohibited from dividing, assigning, pledging or creating any other security interest over any of the Beneficial Interest and the Asset Backed Loans without the prior written approval of the Trustee of the Second Trust.

(*)The holders of the Beneficial Interest and the ABL Lenders are limited to specified investors (*tokutei toushika*) as defined under Paragraph 31 of Article 2 of the Financial Instruments and Exchange Act (Law no.25 of 1948 as amended).

Clean-Up Call

VWFS Japan as the Trustor of the First Trust has a right at its option to exercise a clean-up call to repurchase of all, but not part, of the outstanding Auto Loan Receivables from the Trustee of the First Trust on any Trust Calculation Date, the Discounted Principal Balance of all outstanding Auto Loan Receivables is expected to be less than ten percent (10%) of the Discounted Principal Balance of the Initial Auto Loan Receivables as of the Initial Cut-off Date after the distribution pursuant to Article 18.1 of the First Trust Agreement on the immediately following First Trust Payment Date.

Pool Information
Pool Balance on Initial Cut-Off Date

Status	Number of Contracts	Outstanding Discounted Principal Balance
Normal	31,976	64,176,234,995 JPY
Cancellation	0	0 JPY
Early Termination	0	0 JPY
Defaulted Receivables	0	0 JPY
Matured	0	0 JPY
Refinance Option	0	0 JPY
Repurchase	0	0 JPY
Total	31,976	64,176,234,995 JPY

Pool Balance before entrustment of Additional Auto Loan Receivables

Status	Number of Contracts on previous EoP	Outstanding Discounted Principal Balance on previous EoP	Number of Contracts "as Collections" during the relevant Monthly Period*	Outstanding Discounted Principal Balance "as Collections" during the relevant Monthly Period*	Number of Contracts EoP before entrustment of Additional Auto Loan Receivables	Outstanding Discounted Principal Balance EoP before entrustment of Additional Auto Loan Receivables
Normal	35,942	65,531,431,058 JPY	35,230	1,187,654,019 JPY	35,230	63,507,374,935 JPY
Cancellation	0	0 JPY	0	0 JPY	0	0 JPY
Early Termination	0	0 JPY	320	593,072,139 JPY	0	0 JPY
Defaulted Receivables	0	0 JPY	3	7,058,330 JPY	0	0 JPY
Matured	0	0 JPY	316	163,852,805 JPY	0	0 JPY
Refinance Option	0	0 JPY	73	72,418,830 JPY	0	0 JPY
Repurchase	0	0 JPY	0	0 JPY	0	0 JPY
Total	35,942	65,531,431,058 JPY	35,942	2,024,056,123 JPY	35,230	63,507,374,935 JPY

Pool Balance after entrustment of Additional Auto Loan Receivables

Status	Number of Contracts EoP before entrustment of Additional Auto Loan Receivables	Outstanding Discounted Principal Balance EoP before entrustment of Additional Auto Loan Receivables	Number of Contracts of Additional Auto Loan Receivables	Outstanding Discounted Principal Balance of Additional Auto Loan Receivables	Number of Contracts EoP after entrustment of Additional Auto Loan Receivables	Outstanding Discounted Principal Balance EoP after entrustment of Additional Auto Loan Receivables
Normal	35,230	63,507,374,935 JPY	1,002	2,066,850,129 JPY	36,232	65,574,225,064 JPY
Cancellation	0	0 JPY	0	0 JPY	0	0 JPY
Early Termination	0	0 JPY	0	0 JPY	0	0 JPY
Defaulted Receivables	0	0 JPY	0	0 JPY	0	0 JPY
Matured	0	0 JPY	0	0 JPY	0	0 JPY
Refinance Option	0	0 JPY	0	0 JPY	0	0 JPY
Repurchase	0	0 JPY	0	0 JPY	0	0 JPY
Total	35,230	63,507,374,935 JPY	1,002	2,066,850,129 JPY	36,232	65,574,225,064 JPY

Limits on Eligibility Criteria

Status Limits on Eligibility Criteria (v) (including Additional Entrustment)	Current Exposure in %	Limits in % of the aggregate Discounted Principal Balance of the Auto Loan Receivables outstanding	Status
(i) on Used Purchased Vehicle	20.34 %	35 %	OK
(ii) on Non-VW Vehicles	0.05 %	5 %	OK
(iii) on Balloon Payment	45.49 %	50 %	OK

Outstanding Balances

Monthly Period: from 2016/09/11 to 2016/10/10
 Reporting Date: 2016/10/17
 Trust Calculation Date: 2016/10/26

Outstanding Balances

	Number of Contracts	Aggregate Amount of the Discounted Principal Balance	Aggregate Amount of the Nominal Balance
Balance on the previous EoP	35,942	65,531,431,058 JPY	67,918,755,000 JPY
Balance after counting on the Collections during the relevant	35,230	63,507,374,935 JPY	65,759,025,100 JPY
Balance of Additional Auto Loan Receivables	1,002	2,066,850,129 JPY	2,158,173,600 JPY
Aggregate Amount of Auto Loan Receivables	36,232	65,574,225,064 JPY	67,917,198,700 JPY

Collections

	Number of Contracts	Aggregate Amount of the Discounted Principal Balance	Aggregate Amount of the Nominal Balance
Collections: Amortization of current contracts	35,230	1,187,654,019 JPY	1,303,436,800 JPY
Collections: Cancellation	0	0 JPY	0 JPY
Collections: Early Termination	320	593,072,139 JPY	594,221,321 JPY
Collections: Defaulted Receivables	3	7,058,330 JPY	7,084,421 JPY
Collections: Matured	316	163,852,805 JPY	164,149,500 JPY
Collections: Refinance Option	73	72,418,830 JPY	72,540,000 JPY
Collections: Repurchase	0	0 JPY	0 JPY
Sum	35,942	2,024,056,123 JPY	2,141,432,042 JPY

Available Distribution Amount

	Number of Contracts	Aggregate Amount of the Nominal Balance
(a) the Collections for the Monthly Period with respect to such Trust Calculation Date	35,942	2,141,432,042 JPY
(b) drawings from the Cash Collateral Ledger in accordance with Article 18.3 of the First Trust Agreement	0	0 JPY
(c) net investment earnings from Eligible Investments	0	0 JPY
(d) net proceeds from the sale or disposal of the Trust Assets of the First Trust	0	0 JPY
(e) any amount which is carried over from the immediately preceding Trust Calculation Date	0	0 JPY
Sum	35,942	2,141,432,042 JPY

Waterfall

There is no distinction between principal and interest, and all collections go through a single priority of payments			
		Payment	Remaining Amount
Available Distribution Amount	plus	2,141,432,042 JPY	2,141,432,042 JPY
(a) an amount necessary for the payment of all taxes and public charges to be paid to the relevant public authority by the immediately following First Trust Payment Date.	less	0 JPY	2,141,432,042 JPY
(b) an amount necessary for the payment of all Fees for the Trustee of the First Trust to be paid to the Trustee of the First Trust by the immediately following First Trust Payment Date.	less	442,336 JPY	2,140,989,706 JPY
(c) an amount necessary for the payment of the Servicing Fee to be paid to the Servicer by the immediately following First Trust Payment Date.	less	58,978,287 JPY	2,082,011,419 JPY
(d) an amount necessary for the payment of the Trust Expenses of the First Trust as provided in Article 23.1 (including the Rating Fees, Costs of the Second Trust and those fees not otherwise covered by (b) or (c) above) to be paid to the relevant party by the immediately following First Trust Payment Date (including any amounts advanced by the Trustee of the First Trust pursuant to Article 23.3)	less	451,084 JPY	2,081,560,335 JPY
(e) an amount necessary for the payment of overdue and unpaid interest on the Asset Backed Loans to the First Trust (if any) to be paid to the Trustee of the Second Trust by the immediately following First Trust Payment Date.	less	0 JPY	2,081,560,335 JPY
(f) an amount necessary for the payment to the Trustee of the Second Trust of interest on the Asset Backed Loan to the First Trust accruing during the relevant Interest Calculation Period	less	9,500,000 JPY	2,072,060,335 JPY
(g) an amount necessary to top up the balance thereof until it is equal to the Cash Collateral Ledger Target Balance	less	0 JPY	2,072,060,335 JPY
(h) (i) prior to the expiration of the Revolving Period: an amount necessary for the redemption of any Additional Senior Beneficial Interest;	less	1,932,504,870 JPY	139,555,465 JPY
(ii) following the expiration of the Revolving Period and prior to the occurrence of an Early Amortization Event, an amount necessary for the payment to the Trustee of the Second Trust of the Asset Backed Loan Principal Payment Amount for the relevant First Trust Payment Date.			
(iii) following the occurrence of the Early Amortization Event, an amount necessary for the payment to the Trustee of the Second Trust of the remaining principal balance of the Asset Backed Loan to the First Trust.			
(i) an amount necessary for the payment to the Trustee of the First Trust of any Indemnified Amounts which are not compensated by the Trustor of the First Trust	less	0 JPY	139,555,465 JPY
(j) an amount necessary for the payment to the Subordinated Beneficiary of the Subordinated Beneficial Principal Payment Amount for the relevant First Trust Payment Date.	less	91,967,186 JPY	47,588,279 JPY
(k) (i) prior to the expiration of the Revolving Period, then (x) if a transfer is made under (j) above, such remaining amount will be transferred to the Expenses Distribution Ledger for payment to the Subordinated Beneficiary as a payment of earnings on the Subordinated Beneficial Interest, and such payment shall be made on the First Trust Payment Date immediately following such Trust Calculation Date or (y) if no transfer is made under (j) above, such remaining amount will be carried forward to the next Trust Calculation Date.	less	47,588,279 JPY	0 JPY
(ii) following the expiration of the Revolving Period and prior to the occurrence of an Early Amortization Event, then such remaining amount will be transferred to the Expenses Distribution Ledger for payment to the Subordinated Beneficiary as a payment of earnings on the Subordinated Beneficial Interest, and such payment shall be made on the First Trust Payment Date immediately following such Trust Calculation Date.			
(iii) following the occurrence of an Early Amortization Event, the remaining amount in the Trust Collection Ledger will be carried forward to the next Trust Calculation Date.			

Credit Enhancement

Subordinated Principal Balance as of the relevant First Trust Payment Date

	Percentage of Aggregate Discounted Principal Balance	Value
(i) the aggregate amount of the Discounted Principal Balance of all Auto Loan Receivables outstanding		65,574,225,064 JPY
(ii) Asset Backed Loan Principal Balance on the relevant First Trust Payment Date		60,000,000,000 JPY
Overcollateralization (= (i) - (ii))	8.50 %	5,574,225,064 JPY
Trust Collection Ledger which is carried over from the immediately preceding Trust Calculation Date	0.00 %	0 JPY
The amount in the Cash Collateral Ledger	0.58 %	380,000,000 JPY
Subordinated Principal Balance	9.08 %	5,954,225,064 JPY

Trust Management Account (TMA)

	in JPY	+/-	in JPY (previous)
Initial Balance on Cash Entrustment Date	380,000,000 JPY		0 JPY
Outstanding Balance on First Trust Payment Date	380,000,000 JPY	0 JPY	380,000,000 JPY
(a) Expenses Distribution Ledger	0 JPY	0 JPY	0 JPY
(b) Trust Collection Ledger	0 JPY	0 JPY	0 JPY
(c) Cash Collateral Ledger	380,000,000 JPY	0 JPY	380,000,000 JPY
Cash Collateral Ledger Target Balance	380,000,000 JPY		

Calculation of Credit Enhancement

Driver Japan five's Credit Enhancement consists of the items listed above in the Subordinated Principal Balance as of the relevant date of determination (immediately following the First Trust Payment Date). The result provides an absolute value, which will be applied to the (amortized) Aggregate Discounted Principal Balance as of the end of the relevant date.

The transaction has a Revolving Period of 12 months until February 2017.

Asset Backed Loan Overcollateralization Percentage is (i) prior to the expiration of the Revolving Period, 8.5%, and (ii) following the expiration of the Revolving Period, 11.5%; provided, in each case no Credit Enhancement Increase Condition shall be in effect. After a Level 1 Credit Enhancement Increase Condition in effect, 17% and after a Level 2 Credit Enhancement Increase Condition is in effect, 100%.

Cumulative Gross Loss & Cumulative Repurchased Receivables

Cumulative Defaulted Receivables

	Number of Contracts	Write Offs
Beginning of Period	16	47,246,305 JPY
Defaulted Receivables	3	7,058,330 JPY
End of Period	19	54,304,635 JPY

Cumulative Gross Loss Ratio

The sum of the Discounted Principal Balance of all Auto Loan Receivables that have become Defaulted Receivables from the Initial Cut-off Date through to the end of Monthly Period immediately preceding the relevant Trust Calculation Date

54,304,635 JPY 0.08 %

The sum of (i) the aggregate Discounted Principal Balance of the Initial Auto Loan Receivables as of the Initial Cut-off Date and (ii) the aggregate Discounted Principal Balance as of the relevant Trust Calculation Date of all Additional Auto Loan Receivables (if any) entrusted on the Additional Entrustment Dates which fall six months prior to the relevant Trust Calculation Date.

67,523,389,831 JPY

Performance Triggers

Asset Backed Loan Overcollateralization Percentage was implemented to assure on a monthly basis that no cash is paid to lower steps in the waterfall unless there is sufficient Overcollateralization to support the transaction.

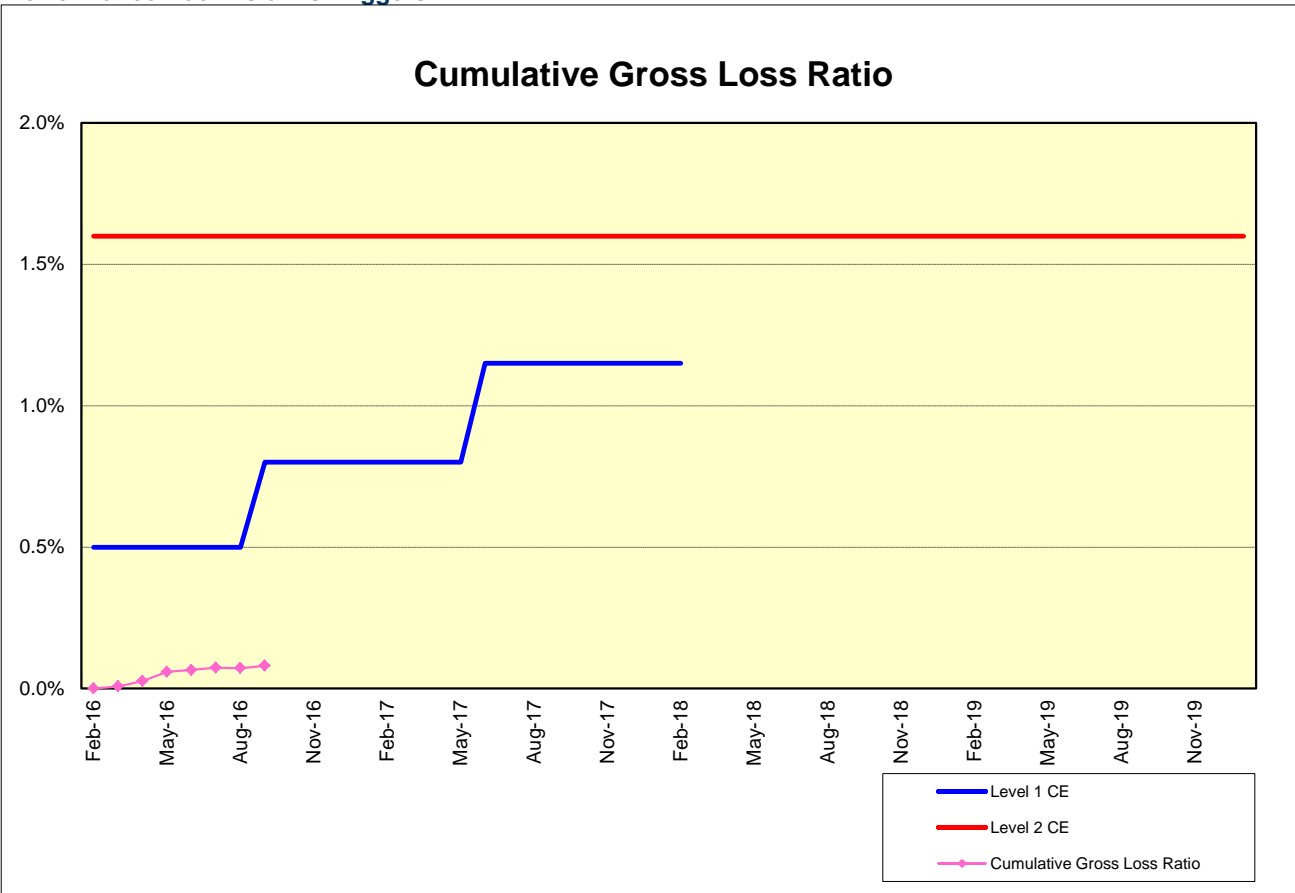
The performance trigger in form of a Credit Enhancement Increase Condition will be activated when the Cumulative Gross Loss Ratio exceeds the defined limits. In this case the Overcollateralization will be increased accordingly.

Levels	Credit Enhancement increase condition	Credit Enhancement increase condition in place?
Level 1 (i)	Cumulative Gross Loss Ratio exceeds 0.5% for any First Trust Payment Date on or prior to August 2016	no
Level 1 (ii)	Cumulative Gross Loss Ratio exceeds 0.8% for any First Trust Payment Date from September 2016 to May 2017	no
Level 1 (iii)	Cumulative Gross Loss Ratio exceeds 1.15% for any First Trust Payment Date from June 2017 to February 2018	no
Level 2	Cumulative Gross Loss Ratio exceeds 1.6% for any First Trust Payment Date	no

	Asset Backed Loan Overcollateralization Percentage
Prior to the expiration of the Revolving Period (No Credit Enhancement Increase Condition is in effect)	8.50 %
Following the expiration of Revolving Period (No Credit Enhancement Increase Condition is in effect)	11.50 %
After a Level 1 Credit Enhancement Increase Condition is in effect	17.00 %
After a Level 2 Credit Enhancement Increase Condition is in effect	100.00 %
Current Asset Backed Loan Overcollateralization Percentage	8.50 %

Cumulative Gross Loss & Cumulative Repurchased Receivables

Performance Pool vis-a-vis Triggers



Cumulative Repurchased Receivables

	Number of Contracts	Repurchase Price
Beginning of Period	0	0 JPY
Repurchased Receivables	0	0 JPY
End of Period	0	0 JPY

Defaulted and Delinquent Contracts

Information of Delinquencies and Defaults

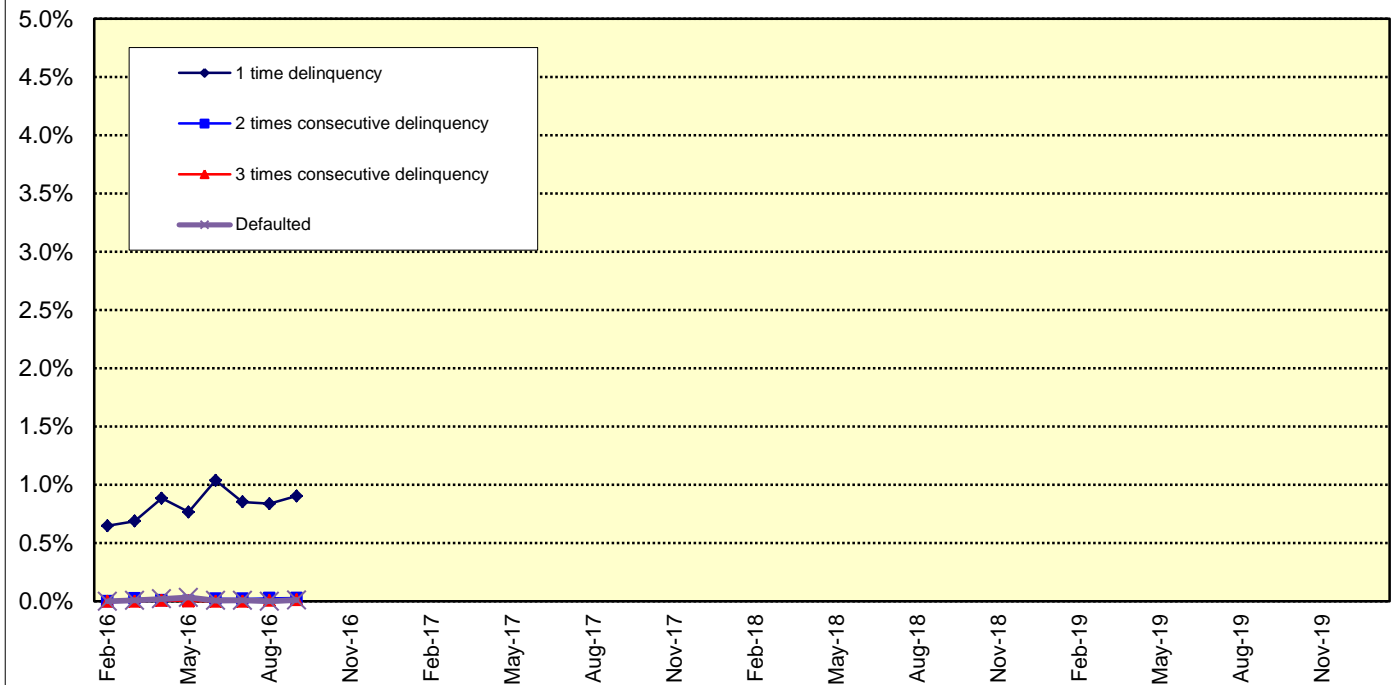
Current Reporting Period	Number of Contracts	Percentage of Contracts (*)	Outstanding Discounted Principal Balance	Percentage of Principal Balance (*)	Outstanding Nominal Balance	Percentage of Nominal Balance (*)
Delinquent	327	0.91 %	617,753,535 JPY	0.94 %	643,639,100 JPY	0.95 %
Default	3	0.01 %	7,058,330 JPY	0.01 %	7,084,421 JPY	0.01 %

(*) Based on the previous EoP

Delinquency Profile (Information Purpose Only)

Days in Arrears	Number of Contracts	Percentage of Contracts	Outstanding Discounted Principal Balance	Percentage of Principal Balance	Outstanding Nominal Balance	Percentage of Nominal Balance
1	315	0.87 %	591,978,764 JPY	0.90 %	616,685,900 JPY	0.91 %
2	10	0.03 %	17,204,436 JPY	0.03 %	17,945,800 JPY	0.03 %
3	2	0.01 %	8,570,335 JPY	0.01 %	9,007,400 JPY	0.01 %
Total	327	0.90 %	617,753,535 JPY	0.94 %	643,639,100 JPY	0.95 %

Delinquent / Defaulted (Gross Loss) Ratio



Run Out Schedule

ROS on the previous EoP on 2016/09/10

Next Payment Month	Number of Contracts	ABS Outstanding Principal	ABS Outstanding Interest	Outstanding Installment	ABS Remaining Principal	ABS Remaining Interest	ABS Remaining Installment
08.2016	35,942	65,531,431,058 JPY	2,387,323,942 JPY	67,918,755,000 JPY	0 JPY	0 JPY	0 JPY
09.2016	35,942	64,095,015,392 JPY	2,269,999,608 JPY	66,365,015,000 JPY	1,436,415,666 JPY	117,324,334 JPY	1,553,740,000 JPY
10.2016	35,552	62,747,505,598 JPY	2,155,320,402 JPY	64,902,826,000 JPY	1,347,509,794 JPY	114,679,206 JPY	1,462,189,000 JPY
11.2016	35,270	61,284,452,541 JPY	2,043,118,759 JPY	63,327,571,300 JPY	1,463,053,057 JPY	112,201,643 JPY	1,575,254,700 JPY
12.2016	34,880	58,690,511,025 JPY	1,933,534,275 JPY	60,624,045,300 JPY	2,593,941,516 JPY	109,584,484 JPY	2,703,526,000 JPY
01.2017	34,423	56,990,887,287 JPY	1,828,720,813 JPY	58,819,608,100 JPY	1,699,623,738 JPY	104,813,462 JPY	1,804,437,200 JPY
02.2017	34,066	55,488,571,214 JPY	1,727,058,686 JPY	57,215,629,900 JPY	1,502,316,073 JPY	101,662,127 JPY	1,603,978,200 JPY
03.2017	33,552	53,741,948,270 JPY	1,628,112,130 JPY	55,370,060,400 JPY	1,746,622,944 JPY	98,946,556 JPY	1,845,569,500 JPY
04.2017	32,734	52,381,172,725 JPY	1,532,260,775 JPY	53,913,433,500 JPY	1,360,775,545 JPY	95,851,355 JPY	1,456,626,900 JPY
05.2017	32,452	50,814,509,171 JPY	1,438,817,329 JPY	52,253,326,500 JPY	1,566,663,554 JPY	93,443,446 JPY	1,660,107,000 JPY
06.2017	31,951	48,604,622,486 JPY	1,348,008,614 JPY	49,952,631,100 JPY	2,209,886,685 JPY	90,808,715 JPY	2,300,695,400 JPY
07.2017	31,278	46,410,044,371 JPY	1,260,958,729 JPY	47,671,003,100 JPY	2,194,578,115 JPY	87,049,885 JPY	2,281,628,000 JPY
08.2017	30,735	44,747,690,248 JPY	1,177,748,452 JPY	45,925,438,700 JPY	1,662,354,123 JPY	83,210,277 JPY	1,745,564,400 JPY
09.2017	30,211	42,767,582,186 JPY	1,097,396,114 JPY	43,864,978,300 JPY	1,980,108,062 JPY	80,352,338 JPY	2,060,460,400 JPY
10.2017	29,263	41,179,590,364 JPY	1,020,208,936 JPY	42,199,799,300 JPY	1,587,991,822 JPY	77,187,178 JPY	1,665,179,000 JPY
11.2017	28,621	39,399,271,991 JPY	945,708,009 JPY	40,344,980,000 JPY	1,780,318,373 JPY	74,500,927 JPY	1,854,819,300 JPY
12.2017	27,802	36,266,568,711 JPY	874,097,289 JPY	37,140,666,000 JPY	3,132,703,280 JPY	71,610,720 JPY	3,204,314,000 JPY
01.2018	26,576	34,212,869,702 JPY	807,563,998 JPY	35,020,433,700 JPY	2,053,699,009 JPY	66,533,291 JPY	2,120,232,300 JPY
02.2018	25,635	32,008,064,038 JPY	744,525,862 JPY	32,755,589,000 JPY	2,204,805,664 JPY	63,038,136 JPY	2,267,843,000 JPY
03.2018	24,336	28,590,559,454 JPY	684,954,946 JPY	29,275,514,400 JPY	3,417,504,584 JPY	59,570,916 JPY	3,477,075,500 JPY
04.2018	21,912	27,112,589,329 JPY	630,136,571 JPY	27,742,725,900 JPY	1,477,970,125 JPY	54,818,375 JPY	2,532,788,500 JPY
05.2018	21,175	25,255,105,575 JPY	577,713,125 JPY	25,832,818,700 JPY	1,857,483,754 JPY	52,423,446 JPY	1,909,907,200 JPY
06.2018	20,099	22,663,612,110 JPY	528,238,590 JPY	23,191,850,700 JPY	2,591,493,465 JPY	49,474,535 JPY	2,640,968,000 JPY
07.2018	18,565	20,597,513,601 JPY	482,825,699 JPY	21,080,339,300 JPY	2,066,098,509 JPY	45,412,891 JPY	2,111,511,400 JPY
08.2018	17,498	18,789,853,556 JPY	441,118,444 JPY	19,230,972,000 JPY	1,807,660,045 JPY	41,707,255 JPY	1,849,367,300 JPY
09.2018	16,388	16,382,019,438 JPY	402,588,862 JPY	16,784,608,300 JPY	2,407,834,118 JPY	38,529,582 JPY	2,446,363,700 JPY
10.2018	14,750	15,005,681,894 JPY	368,071,206 JPY	15,373,753,100 JPY	1,376,337,544 JPY	34,517,656 JPY	1,410,855,200 JPY
11.2018	13,903	13,450,167,143 JPY	336,051,857 JPY	13,786,119,000 JPY	1,555,614,751 JPY	32,019,349 JPY	1,587,634,100 JPY
12.2018	12,908	12,107,028,302 JPY	306,754,098 JPY	12,413,782,400 JPY	1,343,038,841 JPY	29,297,759 JPY	1,372,336,600 JPY
01.2019	12,264	11,241,697,901 JPY	280,170,499 JPY	11,521,868,400 JPY	865,330,401 JPY	26,583,599 JPY	891,914,000 JPY
02.2019	11,725	10,440,892,680 JPY	255,395,820 JPY	10,696,288,500 JPY	800,805,221 JPY	24,774,679 JPY	825,579,900 JPY
03.2019	11,051	9,498,050,449 JPY	232,233,751 JPY	9,730,284,200 JPY	942,842,231 JPY	23,162,069 JPY	966,004,300 JPY
04.2019	10,077	8,960,716,078 JPY	210,979,322 JPY	9,171,695,400 JPY	537,334,371 JPY	21,254,429 JPY	558,588,800 JPY
05.2019	9,719	8,444,847,545 JPY	190,835,855 JPY	8,635,683,400 JPY	515,868,533 JPY	20,143,467 JPY	536,012,000 JPY
06.2019	9,327	7,775,238,022 JPY	171,812,578 JPY	7,947,050,600 JPY	669,609,523 JPY	19,023,277 JPY	688,632,800 JPY
07.2019	8,821	7,156,773,401 JPY	154,233,499 JPY	7,311,006,900 JPY	618,464,621 JPY	17,579,079 JPY	636,043,700 JPY
08.2019	8,464	6,691,250,623 JPY	138,040,577 JPY	6,829,291,200 JPY	465,522,778 JPY	16,192,922 JPY	481,715,700 JPY
09.2019	8,110	6,205,486,218 JPY	122,892,182 JPY	6,328,378,400 JPY	485,764,405 JPY	15,148,395 JPY	500,912,800 JPY
10.2019	7,592	5,811,522,617 JPY	108,823,583 JPY	5,920,346,200 JPY	393,963,601 JPY	14,068,599 JPY	408,032,200 JPY
11.2019	7,231	5,424,334,671 JPY	95,656,729 JPY	5,519,991,400 JPY	387,187,946 JPY	13,166,854 JPY	400,354,800 JPY
12.2019	6,860	4,796,107,073 JPY	83,357,427 JPY	4,879,464,500 JPY	628,227,598 JPY	12,299,302 JPY	640,526,900 JPY
01.2020	6,420	4,355,868,749 JPY	72,461,251 JPY	4,428,330,000 JPY	440,238,324 JPY	10,896,176 JPY	451,134,500 JPY
02.2020	6,052	3,974,425,196 JPY	62,578,804 JPY	4,037,004,000 JPY	381,443,553 JPY	9,882,447 JPY	391,326,000 JPY
03.2020	5,599	3,547,776,641 JPY	53,571,559 JPY	3,601,348,200 JPY	426,648,555 JPY	9,007,245 JPY	435,655,800 JPY
04.2020	5,003	3,281,216,601 JPY	45,531,099 JPY	3,326,747,700 JPY	266,560,040 JPY	8,040,460 JPY	274,600,500 JPY
05.2020	4,707	2,975,452,048 JPY	38,104,852 JPY	3,013,556,900 JPY	305,764,553 JPY	7,426,247 JPY	313,190,800 JPY
06.2020	4,310	2,618,451,124 JPY	31,387,276 JPY	2,649,838,400 JPY	357,000,924 JPY	6,717,576 JPY	363,718,500 JPY
07.2020	3,911	2,252,664,225 JPY	25,505,575 JPY	2,278,169,800 JPY	365,786,899 JPY	5,881,701 JPY	371,668,600 JPY
08.2020	3,514	1,923,997,902 JPY	20,454,298 JPY	1,944,452,200 JPY	328,666,323 JPY	5,051,277 JPY	333,717,600 JPY
09.2020	3,077	1,512,668,969 JPY	16,140,931 JPY	1,528,809,900 JPY	411,328,933 JPY	4,313,367 JPY	415,642,300 JPY
10.2020	2,445	1,247,949,739 JPY	12,737,861 JPY	1,260,687,600 JPY	264,719,230 JPY	3,403,070 JPY	268,122,300 JPY
11.2020	2,047	922,753,636 JPY	9,949,164 JPY	932,702,800 JPY	325,196,103 JPY	2,788,697 JPY	327,984,800 JPY
12.2020	1,548	756,296,818 JPY	7,896,582 JPY	764,193,400 JPY	166,456,818 JPY	2,052,582 JPY	168,509,400 JPY
01.2021	1,375	597,218,093 JPY	6,213,207 JPY	603,431,300 JPY	159,078,725 JPY	1,683,375 JPY	160,762,100 JPY
02.2021	1,157	446,818,747 JPY	4,856,753 JPY	451,675,500 JPY	150,399,346 JPY	1,356,454 JPY	151,755,800 JPY
03.2021	946	272,516,643 JPY	3,800,257 JPY	276,316,900 JPY	174,302,104 JPY	1,056,496 JPY	175,358,600 JPY
04.2021	662	212,136,438 JPY	3,089,362 JPY	215,225,800 JPY	60,380,205 JPY	710,895 JPY	61,091,100 JPY
05.2021	559	154,523,493 JPY	2,511,807 JPY	157,035,300 JPY	57,612,945 JPY	577,555 JPY	58,190,500 JPY
06.2021	428	113,909,337 JPY	2,062,763 JPY	115,972,100 JPY	40,614,156 JPY	449,044 JPY	41,063,200 JPY
07.2021	333	93,741,754 JPY	1,716,246 JPY	95,458,000 JPY	20,167,583 JPY	346,517 JPY	20,514,100 JPY
08.2021	302	80,034,789 JPY	1,428,911 JPY	81,463,700 JPY	13,706,965 JPY	287,335 JPY	13,994,300 JPY
09.2021	274	69,627,989 JPY	1,182,111 JPY	70,810,100 JPY	10,406,800 JPY	246,800 JPY	10,653,600 JPY
10.2021	230	60,757,371 JPY	966,129 JPY	61,723,500 JPY	8,870,618 JPY	215,982 JPY	9,086,600 JPY
11.2021	200	52,969,655 JPY	776,745 JPY	53,746,400 JPY	7,787,716 JPY	189,384 JPY	7,977,100 JPY
12.2021	162	41,501,175 JPY	611,025 JPY	42,112,200 JPY	11,468,480 JPY	165,720 JPY	11,634,200 JPY
01.2022	145	33,592,214 JPY	480,586 JPY	34,072,800 JPY	7,908,961 JPY	130,439 JPY	8,039,400 JPY
02.2022	129	28,488,274 JPY	374,826 JPY	28,863,100 JPY	5,103,940 JPY	105,760 JPY	5,209,700 JPY
03.2022	115	23,944,294 JPY	285,006 JPY	24,229,300 JPY	4,543,980 JPY	89,820 JPY	4,633,800 JPY
04.2022	99	20,102,492 JPY	209,308 JPY	20,311,800 JPY	3,841,802 JPY	75,698 JPY	3,917,500 JPY
05.2022	89	16,596,280 JPY	145,620 JPY	16,741,900 JPY	3,506,212 JPY	63,688 JPY	3,569,900 JPY
06.2022	82	11,585,412 JPY	92,988 JPY	11,678,400 JPY	5,010,868 JPY	52,632 JPY	5,063,500 JPY
07.2022	67	7,460,115 JPY	56,085 JPY	7,516,200 JPY	4,125,297 JPY	36,903 JPY	4,162,200 JPY
08.2022	57	4,850,678 JPY	32,322 JPY	4,883,000 JPY	2,609,437 JPY	23,763 JPY	2,633,200 JPY
09.2022	50	2,906,226 JPY	16,874 JPY	2,923,100 JPY	1,944,452 JPY	15,448 JPY	1,959,900 JPY
10.2022	30	1,569,182 JPY	7,618 JPY	1,576,800 JPY	1,337,044 JPY	9,256 JPY	1,346,300 JPY
11.2022	20	639,382 JPY	2,618 JPY	642,000 JPY	929,800 JPY	5,000 JPY	934,800 JPY
12.2022	7	155,919 JPY	581 JPY	156,500 JPY	483,463 JPY	2,037 JPY	485,500 JPY
01.2023	3	26,416 JPY	84 JPY	26,500 JPY	129,503 JPY	497 JPY	130,000 JPY
02.2023	1	0 JPY	0 JPY	0 JPY	26,416 JPY	84 JPY	26,500 JPY

Run Out Schedule

ROS on the relevant EoP on 2016/10/10

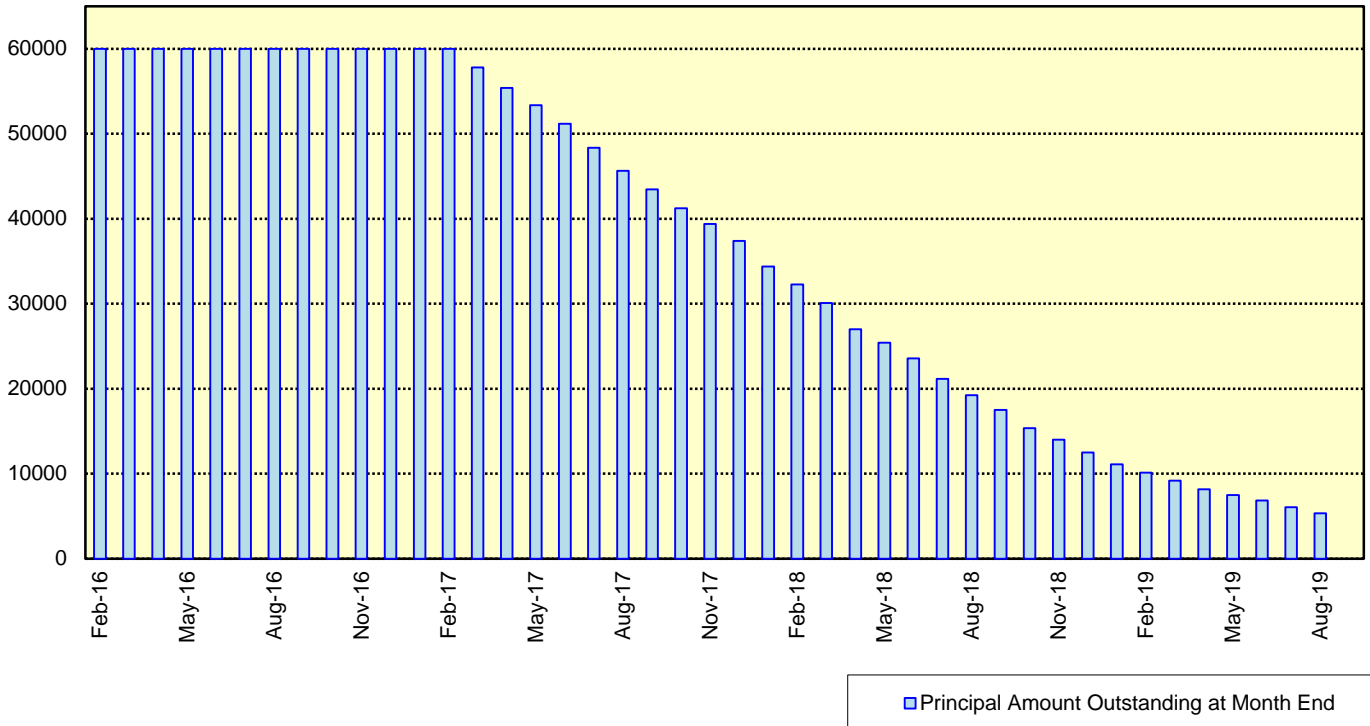
Next Payment Month	Number of Contracts	ABS Outstanding Principal	ABS Outstanding Interest	Outstanding Installment	ABS Remaining Principal	ABS Remaining Interest	ABS Remaining Installment
09.2016	36,232	65,574,225,064 JPY	2,342,973,636 JPY	67,917,198,700 JPY	0 JPY	0 JPY	0 JPY
10.2016	36,232	64,211,559,506 JPY	2,225,642,294 JPY	66,437,201,800 JPY	1,362,665,558 JPY	117,331,342 JPY	1,479,996,900 JPY
11.2016	35,954	62,741,816,529 JPY	2,110,817,371 JPY	64,852,633,900 JPY	1,469,742,977 JPY	114,824,923 JPY	1,584,567,900 JPY
12.2016	35,577	60,105,310,734 JPY	1,998,625,266 JPY	62,103,936,000 JPY	2,636,505,795 JPY	112,192,105 JPY	2,748,697,900 JPY
01.2017	35,121	58,380,995,735 JPY	1,891,286,465 JPY	60,272,282,200 JPY	1,724,314,999 JPY	107,338,801 JPY	1,831,653,800 JPY
02.2017	34,764	56,862,303,125 JPY	1,787,144,175 JPY	58,649,447,300 JPY	1,518,692,610 JPY	104,142,290 JPY	1,622,834,900 JPY
03.2017	34,250	55,093,515,987 JPY	1,685,748,113 JPY	56,779,264,100 JPY	1,768,787,138 JPY	101,396,062 JPY	1,870,183,200 JPY
04.2017	33,427	53,714,914,312 JPY	1,587,480,288 JPY	55,302,394,600 JPY	1,378,601,675 JPY	98,267,825 JPY	1,476,869,500 JPY
05.2017	33,142	52,129,376,138 JPY	1,491,645,262 JPY	53,621,021,400 JPY	1,585,538,174 JPY	95,835,026 JPY	1,681,373,200 JPY
06.2017	32,641	49,885,365,068 JPY	1,398,481,132 JPY	51,283,846,200 JPY	2,244,011,070 JPY	93,164,130 JPY	2,337,175,200 JPY
07.2017	31,965	47,655,211,355 JPY	1,309,134,445 JPY	48,964,345,800 JPY	2,230,153,713 JPY	89,346,687 JPY	2,319,500,400 JPY
08.2017	31,420	45,966,894,790 JPY	1,223,687,810 JPY	47,190,582,600 JPY	1,688,316,565 JPY	85,446,635 JPY	1,773,763,200 JPY
09.2017	30,895	43,966,582,399 JPY	1,141,146,101 JPY	45,107,728,500 JPY	2,000,312,391 JPY	82,541,709 JPY	2,082,854,100 JPY
10.2017	29,949	42,357,221,394 JPY	1,061,806,206 JPY	43,419,027,600 JPY	1,609,361,005 JPY	79,339,895 JPY	1,688,700,900 JPY
11.2017	29,311	40,546,695,419 JPY	985,194,481 JPY	41,531,889,900 JPY	1,810,525,975 JPY	76,611,725 JPY	1,887,137,700 JPY
12.2017	28,479	37,361,319,445 JPY	911,525,855 JPY	38,272,845,300 JPY	3,185,375,974 JPY	73,668,626 JPY	3,259,044,600 JPY
01.2018	27,245	35,278,167,731 JPY	843,027,969 JPY	36,121,195,700 JPY	2,083,151,714 JPY	68,497,886 JPY	2,151,649,600 JPY
02.2018	26,300	33,048,705,948 JPY	778,077,952 JPY	33,826,783,900 JPY	2,229,461,783 JPY	64,950,017 JPY	2,294,411,800 JPY
03.2018	24,981	29,572,909,494 JPY	716,641,906 JPY	30,289,551,400 JPY	3,475,796,454 JPY	61,436,046 JPY	3,537,232,500 JPY
04.2018	22,523	28,069,852,479 JPY	660,030,721 JPY	28,729,883,200 JPY	1,503,057,015 JPY	56,611,185 JPY	1,559,668,200 JPY
05.2018	21,778	26,189,982,175 JPY	605,856,725 JPY	26,795,838,900 JPY	1,879,870,304 JPY	54,173,996 JPY	1,934,044,300 JPY
06.2018	20,688	23,545,737,508 JPY	554,668,492 JPY	24,100,406,000 JPY	2,644,244,667 JPY	51,188,233 JPY	2,695,432,900 JPY
07.2018	19,127	21,439,471,466 JPY	507,623,034 JPY	21,947,094,500 JPY	2,106,266,042 JPY	47,045,458 JPY	2,153,311,500 JPY
08.2018	18,046	19,596,021,922 JPY	464,353,578 JPY	20,060,375,500 JPY	1,843,449,544 JPY	43,269,456 JPY	1,888,719,000 JPY
09.2018	16,928	17,162,204,952 JPY	424,323,348 JPY	17,586,528,300 JPY	2,433,816,970 JPY	40,030,230 JPY	2,473,847,200 JPY
10.2018	15,279	15,769,275,207 JPY	388,345,593 JPY	16,157,620,800 JPY	1,392,929,745 JPY	35,977,755 JPY	1,428,907,500 JPY
11.2018	14,431	14,170,927,193 JPY	354,895,007 JPY	14,525,822,200 JPY	1,598,348,014 JPY	33,450,586 JPY	1,631,798,600 JPY
12.2018	13,418	12,771,585,669 JPY	324,240,631 JPY	13,095,826,300 JPY	1,399,341,524 JPY	30,654,376 JPY	1,429,995,900 JPY
01.2019	12,751	11,865,539,729 JPY	296,402,871 JPY	12,161,942,600 JPY	906,045,940 JPY	27,837,760 JPY	1,933,883,700 JPY
02.2019	12,194	11,034,204,483 JPY	270,454,517 JPY	11,304,659,000 JPY	831,335,246 JPY	25,948,354 JPY	857,283,600 JPY
03.2019	11,501	10,400,652,663 JPY	246,171,737 JPY	10,286,824,400 JPY	993,551,820 JPY	24,282,780 JPY	1,017,834,600 JPY
04.2019	10,493	9,468,018,068 JPY	223,884,232 JPY	9,691,902,300 JPY	572,634,595 JPY	22,287,505 JPY	594,922,100 JPY
05.2019	10,116	8,917,626,563 JPY	202,768,937 JPY	9,120,395,500 JPY	550,391,505 JPY	21,115,295 JPY	571,506,800 JPY
06.2019	9,699	8,190,481,417 JPY	182,829,083 JPY	8,373,310,500 JPY	727,145,146 JPY	19,939,854 JPY	747,085,000 JPY
07.2019	9,149	7,526,909,587 JPY	164,431,013 JPY	7,691,340,600 JPY	663,571,830 JPY	18,398,070 JPY	681,969,900 JPY
08.2019	8,772	7,050,077,603 JPY	147,496,397 JPY	7,197,574,000 JPY	476,831,984 JPY	16,934,616 JPY	493,766,600 JPY
09.2019	8,418	6,555,345,382 JPY	131,629,018 JPY	6,686,974,400 JPY	494,732,221 JPY	15,867,379 JPY	510,599,600 JPY
10.2019	7,900	6,147,088,610 JPY	116,859,390 JPY	6,263,948,000 JPY	408,256,772 JPY	14,769,628 JPY	423,026,400 JPY
11.2019	7,534	5,747,250,508 JPY	103,022,592 JPY	5,850,273,100 JPY	399,838,102 JPY	13,836,798 JPY	413,674,900 JPY
12.2019	7,158	5,101,076,523 JPY	90,080,077 JPY	5,191,156,600 JPY	646,173,985 JPY	12,942,515 JPY	659,116,500 JPY
01.2020	6,717	4,645,122,669 JPY	78,576,631 JPY	4,723,699,300 JPY	455,953,854 JPY	11,503,446 JPY	467,457,300 JPY
02.2020	6,344	4,253,098,590 JPY	68,118,410 JPY	4,321,217,000 JPY	392,024,079 JPY	10,458,221 JPY	402,482,300 JPY
03.2020	5,889	3,811,395,844 JPY	58,558,556 JPY	3,869,954,400 JPY	441,702,746 JPY	9,559,854 JPY	451,262,600 JPY
04.2020	5,278	3,535,318,543 JPY	49,997,057 JPY	3,585,315,600 JPY	276,077,301 JPY	8,561,499 JPY	284,638,800 JPY
05.2020	4,982	3,220,178,103 JPY	42,068,397 JPY	3,262,246,500 JPY	315,140,440 JPY	7,928,660 JPY	323,069,100 JPY
06.2020	4,581	2,845,874,446 JPY	34,867,754 JPY	2,880,742,200 JPY	374,303,657 JPY	7,200,643 JPY	381,504,300 JPY
07.2020	4,167	2,461,679,900 JPY	28,537,600 JPY	2,490,217,500 JPY	384,194,546 JPY	6,330,154 JPY	390,524,700 JPY
08.2020	3,761	2,118,202,893 JPY	23,076,407 JPY	2,141,279,300 JPY	343,477,007 JPY	5,461,193 JPY	348,938,200 JPY
09.2020	3,313	1,695,678,749 JPY	18,384,151 JPY	1,714,062,900 JPY	422,524,144 JPY	4,692,256 JPY	427,216,400 JPY
10.2020	2,675	1,423,298,763 JPY	14,624,937 JPY	1,437,923,700 JPY	272,379,986 JPY	3,759,214 JPY	276,139,200 JPY
11.2020	2,274	1,089,428,692 JPY	11,495,108 JPY	1,100,923,800 JPY	333,870,071 JPY	3,129,829 JPY	336,999,900 JPY
12.2020	1,769	902,698,804 JPY	9,116,096 JPY	911,814,900 JPY	186,729,888 JPY	2,379,012 JPY	189,108,900 JPY
01.2021	1,580	722,892,894 JPY	7,150,006 JPY	730,042,900 JPY	179,805,910 JPY	1,966,090 JPY	181,772,000 JPY
02.2021	1,343	547,001,909 JPY	5,550,291 JPY	552,552,200 JPY	175,890,985 JPY	1,599,715 JPY	177,490,700 JPY
03.2021	1,098	332,710,344 JPY	4,293,456 JPY	337,003,800 JPY	214,291,565 JPY	1,256,835 JPY	215,548,400 JPY
04.2021	766	263,280,936 JPY	3,459,364 JPY	266,740,300 JPY	69,429,408 JPY	834,092 JPY	70,263,500 JPY
05.2021	650	190,624,440 JPY	2,774,660 JPY	193,399,100 JPY	72,656,496 JPY	684,704 JPY	73,341,200 JPY
06.2021	490	134,154,260 JPY	2,246,840 JPY	136,401,100 JPY	56,470,180 JPY	527,820 JPY	56,998,000 JPY
07.2021	366	99,422,272 JPY	1,853,128 JPY	101,275,400 JPY	34,731,988 JPY	393,712 JPY	35,125,700 JPY
08.2021	312	85,120,686 JPY	1,548,914 JPY	86,669,600 JPY	14,301,586 JPY	304,214 JPY	14,605,800 JPY
09.2021	285	74,298,881 JPY	1,287,019 JPY	75,585,900 JPY	10,821,805 JPY	261,895 JPY	11,083,700 JPY
10.2021	240	65,041,888 JPY	1,057,112 JPY	66,099,000 JPY	9,256,993 JPY	229,907 JPY	9,486,900 JPY
11.2021	209	56,903,405 JPY	854,895 JPY	57,758,300 JPY	8,138,483 JPY	202,217 JPY	8,340,700 JPY
12.2021	171	44,998,163 JPY	677,337 JPY	45,675,500 JPY	11,905,242 JPY	177,558 JPY	12,082,800 JPY
01.2022	154	36,463,473 JPY	536,327 JPY	36,999,800 JPY	8,534,690 JPY	141,010 JPY	8,675,700 JPY
02.2022	138	30,971,922 JPY	421,878 JPY	31,393,800 JPY	5,491,551 JPY	114,449 JPY	5,606,000 JPY
03.2022	123	26,082,810 JPY	324,490 JPY	26,407,300 JPY	4,889,112 JPY	97,388 JPY	4,986,500 JPY
04.2022	105	21,968,590 JPY	242,210 JPY	22,210,800 JPY	4,114,220 JPY	82,280 JPY	4,196,500 JPY
05.2022	93	18,271,970 JPY	172,730 JPY	18,444,700 JPY	3,696,620 JPY	69,480 JPY	3,766,100 JPY
06.2022	85	13,050,017 JPY	114,883 JPY	13,164,900 JPY	5,221,953 JPY	57,847 JPY	5,279,800 JPY
07.2022	70	8,762,993 JPY	73,407 JPY	8,836,400 JPY	4,287,024 JPY	41,476 JPY	4,328,500 JPY
08.2022	60	5,801,345 JPY	45,555 JPY	5,846,900 JPY	2,961,648 JPY	27,852 JPY	2,989,500 JPY
09.2022	53	3,693,591 JPY	27,109 JPY	3,720,700 JPY	2,107,754 JPY	18,446 JPY	2,126,200 JPY
10.2022	32	2,230,255 JPY	15,345 JPY	2,245,600 JPY	1,463,336 JPY	11,764 JPY	1,475,100 JPY
11.2022	22	1,173,760 JPY	8,240 JPY	1,182,000 JPY	1,056,495 JPY	7,105 JPY	1,063,600 JPY
12.2022	8	641,999 JPY	4,501 JPY	646,500 JPY	531,761 JPY	3,739 JPY	535,500 JPY
01.2023	4	274,044 JPY	2,456 JPY	276,500 JPY	367,955 JPY	2,045 JPY	370,000 JPY
02.2023	2	198,417 JPY	1,583 JPY	200,000 JPY	75,627 JPY	873 JPY	76,500 JPY
03.2023	1	149,049 JPY	951 JPY	150,000 JPY	49,368 JPY	632 JPY	50,000 JPY
04.2023	1	99,524 JPY	476 JPY	100,000 JPY	49,525 JPY	475 JPY	50,000 JPY
05.2023	1	49,841 JPY	159 JPY	50,000 JPY	49,683 JPY	317 JPY	50,000 JPY
06.2023	1	0 JPY	0 JPY	0 JPY	49,841 JPY	159 JPY	50,000 JPY

Expected Amortisation

Expected Amortization to the Second Trust

JPY mil.

Assuming a Clean-Up Call at 10% of the Initial Outstanding Balance, annual prepayments of 10% and 0% defaults.



Distribution by Sub-Servicer

Sub-Servicer	Number of Loans	Percentage of Loans	Outstanding Principal Balance	Percentage of Balance
Cedyna	21,869	60.36 %	40,450,749,061 JPY	61.69 %
Jaccs	14,363	39.64 %	25,123,476,003 JPY	38.31 %
Total	36,232	100.00 %	65,574,225,064 JPY	100.00 %

Distribution by Brand

Make	Number of Loans	Percentage of Loans	Outstanding Discounted Principal Balance	Percentage of Balance
VW	23,203	64.04 %	34,662,835,354 JPY	52.86 %
Audi	12,974	35.81 %	30,751,239,208 JPY	46.90 %
Bentley	21	0.06 %	110,494,530 JPY	0.17 %
Lamborghini	4	0.01 %	18,466,228 JPY	0.03 %
Other	30	0.08 %	31,189,744 JPY	0.05 %
Total	36,232	100.00 %	65,574,225,064 JPY	100.00 %

Distribution by New and Used
Distribution by New and Used

New or Used	Number of Loans	Percentage of Loans	Outstanding Discounted Principal Balance	Percentage of Balance
New	25,978	71.70 %	52,233,534,046 JPY	79.66 %
Used	8,492	23.44 %	12,361,570,251 JPY	18.85 %
Used (Prolonged)	1,762	4.86 %	979,120,767 JPY	1.49 %
Total	36,232	100.00 %	65,574,225,064 JPY	100.00 %

Distribution by Brand New and Used

New or Used	Number of Loans	Percentage of Loans	Outstanding Discounted Principal Balance	Percentage of Balance
VW New	16,838	46.47 %	28,294,875,941 JPY	43.15 %
VW Used	4,897	13.52 %	5,636,659,994 JPY	8.60 %
VW Used (Prolonged)	1,468	4.05 %	731,299,419 JPY	1.12 %
Audi New	9,124	25.18 %	23,857,743,804 JPY	36.38 %
Audi Used	3,556	9.81 %	6,645,674,056 JPY	10.13 %
Audi Used (Prolonged)	294	0.81 %	247,821,348 JPY	0.38 %
Other	55	0.15 %	160,150,502 JPY	0.24 %
Total	36,232	100.00 %	65,574,225,064 JPY	100.00 %

Distribution by Product Type

Loan Type List

Loan Type	Description
100	Volkswagen Owner's Plan
100	Audi Owner's Plan
100	Lamborghini Auto Loan
100	Bentley Auto Loan
101	Twin Loan
105	Refinanced Volkswagen Solutions
106	Refinanced Volkswagen Das Welt Auto with refinance option *
106	Refinanced Audi S-Loan/ S-Loan Plus
106	Refinanced Lamborghini Hyper Premium Plan
106	Refinanced Bentley My Flying B
140	Volkswagen Solutions
150	Volkswagen Das Welt Auto with refinance option **
150	Audi S-Loan
150	Lamborghini Hyper Premium Plan
150	Bentley My Flying B
151	Audi S-Loan Plus

(*) The name was changed from "Refinanced Volkswagen GUC with refinance option" effective from 1 February 2012.

No other changes were made to auto loan agreements.

(**) The name was changed from "Volkswagen GUC with refinance option" effective from 1 February 2012.

No other changes were made to auto loan agreements.

Product Type

Loan Type	Number of Loans	Percentage of Loans	Outstanding Discounted Principal Balance	Percentage of Balance
100	6,783	18.72 %	8,555,699,687 JPY	13.05 %
101	8	0.02 %	1,963,581 JPY	0.00 %
105	1,416	3.91 %	721,163,564 JPY	1.10 %
106	347	0.96 %	258,273,784 JPY	0.39 %
140-VFJ	2,914	8.04 %	4,827,538,261 JPY	7.36 %
140-Dealer	12,090	33.37 %	21,309,105,155 JPY	32.50 %
150	11,748	32.42 %	27,353,588,334 JPY	41.71 %
151	926	2.56 %	2,546,892,698 JPY	3.88 %
Total	36,232	100.00 %	65,574,225,064 JPY	100.00 %

Credit Type

Credit Type	Number of Loans	Percentage of Loans	Outstanding Discounted Principal Balance	Percentage of Balance
Balloon Type Loan	27,678	76.39 %	56,037,124,448 JPY	85.46 %
Equal Instalment Type Loan	8,554	23.61 %	9,537,100,616 JPY	14.54 %
Total	36,232	100.00 %	65,574,225,064 JPY	100.00 %

Distribution by RV

Loan Type	Number of Loans	Percentage of Balance	Outstanding Discounted Principal Balance
100/101/105/106	8,554	14.54 %	9,537,100,616 JPY
140-VFJ (excl. balloon)		3.46 %	2,266,511,228 JPY
140-VFJ (balloon)		3.91 %	2,561,027,033 JPY
140-VFJ	2,914	7.36 %	4,827,538,261 JPY
140-Dealer (excl. balloon)		15.72 %	10,306,261,103 JPY
140-Dealer (balloon)		16.78 %	11,002,844,052 JPY
140-Dealer	12,090	32.50 %	21,309,105,155 JPY
150 (excl. balloon)		19.46 %	12,761,322,716 JPY
150 (balloon)		22.25 %	14,592,265,618 JPY
150	11,748	41.71 %	27,353,588,334 JPY
151 (excl. balloon)		1.33 %	870,313,764 JPY
151 (balloon)		2.56 %	1,676,578,934 JPY
151	926	3.88 %	2,546,892,698 JPY
Total	36,232	100.00 %	65,574,225,064 JPY

Type of Payment Portion	Percentage of Balance	Outstanding Discounted Principal Balance
Monthly Installment Portion	54.51 %	35,741,509,427 JPY
Balloon Portion	45.49 %	29,832,715,637 JPY
Total	100.00 %	65,574,225,064 JPY

Distribution by Brand New and Used
Audi

New or Used	Number of Loans	Percentage of Loans	Outstanding Discounted Principal Balance	Percentage of Balance
New	9,124	70.33 %	23,857,743,804 JPY	77.58 %
Used	3,850	29.67 %	6,893,495,404 JPY	22.42 %
Total	12,974	100.00 %	30,751,239,208 JPY	100.00 %

Bentley

New or Used	Number of Loans	Percentage of Loans	Outstanding Discounted Principal Balance	Percentage of Balance
New	14	66.67 %	74,942,623 JPY	67.82 %
Used	7	33.33 %	35,551,907 JPY	32.18 %
Total	21	100.00 %	110,494,530 JPY	100.00 %

Lamborghini

New or Used	Number of Loans	Percentage of Loans	Outstanding Discounted Principal Balance	Percentage of Balance
New	1	25.00 %	4,740,548 JPY	25.67 %
Used	3	75.00 %	13,725,680 JPY	74.33 %
Total	4	100.00 %	18,466,228 JPY	100.00 %

VW

New or Used	Number of Loans	Percentage of Loans	Outstanding Discounted Principal Balance	Percentage of Balance
New	16,838	72.57 %	28,294,875,941 JPY	81.63 %
Used	6,365	27.43 %	6,367,959,413 JPY	18.37 %
Total	23,203	100.00 %	34,662,835,354 JPY	100.00 %

OTHER

New or Used	Number of Loans	Percentage of Loans	Outstanding Discounted Principal Balance	Percentage of Balance
New	1	3.33 %	1,231,130 JPY	3.95 %
Used	29	96.67 %	29,958,614 JPY	96.05 %
Total	30	100.00 %	31,189,744 JPY	100.00 %

Distribution by Customer Type**Customer Type**

Customer Type	Number of Loans	Percentage of Loans	Outstanding Discounted Principal Balance	Percentage of Balance
Retail	32,579	89.92 %	56,285,537,452 JPY	85.83 %
Corporate	3,653	10.08 %	9,288,687,612 JPY	14.17 %
Total	36,232	100.00 %	65,574,225,064 JPY	100.00 %

Distribution by Outstanding Discounted Principal Balance

Outstanding Discounted Principal Balance	Number of Loans	Percentage of Loans	Outstanding Discounted Principal Balance	Percentage of Balance
<= 500,000 JPY	2,919	8.06 %	842,043,629 JPY	1.28 %
500,001 JPY - 1,000,000 JPY	5,375	14.83 %	4,098,619,107 JPY	6.25 %
1,000,001 JPY - 1,500,000 JPY	7,434	20.52 %	9,342,410,773 JPY	14.25 %
1,500,001 JPY - 2,000,000 JPY	7,834	21.62 %	13,631,971,413 JPY	20.79 %
2,000,001 JPY - 2,500,000 JPY	5,241	14.47 %	11,690,449,088 JPY	17.83 %
2,500,001 JPY - 3,000,000 JPY	3,033	8.37 %	8,262,151,015 JPY	12.60 %
3,000,001 JPY - 3,500,000 JPY	1,779	4.91 %	5,734,460,196 JPY	8.74 %
3,500,001 JPY - 4,000,000 JPY	975	2.69 %	3,631,019,177 JPY	5.54 %
4,000,001 JPY - 4,500,000 JPY	626	1.73 %	2,642,877,058 JPY	4.03 %
4,500,001 JPY - 5,000,000 JPY	371	1.02 %	1,755,474,187 JPY	2.68 %
5,000,001 JPY - 6,000,000 JPY	364	1.00 %	1,976,761,431 JPY	3.01 %
6,000,001 JPY - 7,000,000 JPY	173	0.48 %	1,116,125,155 JPY	1.70 %
7,000,001 JPY - 8,000,000 JPY	67	0.18 %	499,295,180 JPY	0.76 %
8,000,001 JPY - 9,000,000 JPY	36	0.10 %	303,434,777 JPY	0.46 %
9,000,001 JPY - 10,000,000 JPY	5	0.01 %	47,132,878 JPY	0.07 %
>= 10,000,001 JPY	0	0.00 %	0 JPY	0.00 %
Total	36,232	100.00 %	65,574,225,064 JPY	100.00 %

Statistics

Minimum Outstanding Discounted Principal Balance	8,387 JPY
Maximum Outstanding Discounted Principal Balance	9,676,478 JPY
Average Outstanding Discounted Principal Balance	1,809,843 JPY

Distribution by Original Principal Amount

Original Principal Balance	Number of Loans	Percentage of Loans	Outstanding Discounted Principal Balance	Percentage of Balance
<= 500,000 JPY	328	0.91 %	69,254,901 JPY	0.11 %
500,001 JPY - 1,000,000 JPY	2,593	7.16 %	1,242,068,466 JPY	1.89 %
1,000,001 JPY - 1,500,000 JPY	4,344	11.99 %	3,660,550,961 JPY	5.58 %
1,500,001 JPY - 2,000,000 JPY	6,327	17.46 %	7,713,299,292 JPY	11.76 %
2,000,001 JPY - 2,500,000 JPY	6,031	16.65 %	9,517,486,773 JPY	14.51 %
2,500,001 JPY - 3,000,000 JPY	5,762	15.90 %	11,022,938,063 JPY	16.81 %
3,000,001 JPY - 3,500,000 JPY	3,712	10.25 %	8,446,451,753 JPY	12.88 %
3,500,001 JPY - 4,000,000 JPY	2,531	6.99 %	6,630,226,253 JPY	10.11 %
4,000,001 JPY - 4,500,000 JPY	1,391	3.84 %	4,170,095,390 JPY	6.36 %
4,500,001 JPY - 5,000,000 JPY	1,065	2.94 %	3,498,567,339 JPY	5.34 %
5,000,001 JPY - 6,000,000 JPY	1,048	2.89 %	4,045,512,193 JPY	6.17 %
6,000,001 JPY - 7,000,000 JPY	519	1.43 %	2,270,188,330 JPY	3.46 %
7,000,001 JPY - 8,000,000 JPY	258	0.71 %	1,331,018,790 JPY	2.03 %
8,000,001 JPY - 9,000,000 JPY	124	0.34 %	697,553,981 JPY	1.06 %
9,000,001 JPY - 10,000,000 JPY	87	0.24 %	546,753,379 JPY	0.83 %
>= 10,000,001 JPY	112	0.31 %	712,259,200 JPY	1.09 %
Total	36,232	100.00 %	65,574,225,064 JPY	100.00 %

Statistics

Minimum Original Principal Balance	100,000 JPY
Maximum Original Principal Balance	25,500,000 JPY
Average Original Principal Balance	2,652,966 JPY

Distribution by Interest Rate paid by the Obligor

Interest Rate paid by the Obligor	Number of Loans	Percentage of Loans	Outstanding Discounted Principal Balance	Percentage of Balance
< 0.900 %	4,696	12.96 %	9,715,747,832 JPY	14.82 %
0.900 % < 1.500 %	6,942	19.16 %	14,255,716,379 JPY	21.74 %
1.500 % < 2.000 %	8,209	22.66 %	16,488,677,001 JPY	25.15 %
2.000 % < 2.500 %	544	1.50 %	751,529,489 JPY	1.15 %
2.500 % < 3.000 %	7,950	21.94 %	13,851,108,906 JPY	21.12 %
3.000 % < 3.500 %	1,255	3.46 %	1,167,603,262 JPY	1.78 %
3.500 % < 4.000 %	6,515	17.98 %	9,161,045,702 JPY	13.97 %
4.000 % < 4.500 %	117	0.32 %	181,147,405 JPY	0.28 %
4.500 % < 5.000 %	4	0.01 %	1,649,088 JPY	0.00 %
5.000 % or more	0	0.00 %	0 JPY	0.00 %
Total	36,232	100.00 %	65,574,225,064 JPY	100.00 %

Statistics	
Minimum Interest Rate	0.00 %
Maximum Interest Rate	4.79 %
Weighted Average Interest Rate	1.96 %

Distribution by Original Term

Length of Original Term (months)	Number of Loans	Percentage of Loans	Outstanding Discounted Principal Balance	Percentage of Balance
6 - 12	83	0.23 %	25,825,648 JPY	0.04 %
13 - 18	78	0.22 %	24,216,579 JPY	0.04 %
19 - 24	1,372	3.79 %	734,210,138 JPY	1.12 %
25 - 30	134	0.37 %	76,256,315 JPY	0.12 %
31 - 36	18,521	51.12 %	35,810,985,168 JPY	54.61 %
37 - 42	79	0.22 %	74,399,669 JPY	0.11 %
43 - 48	1,596	4.40 %	2,001,037,786 JPY	3.05 %
49 - 54	34	0.09 %	37,574,028 JPY	0.06 %
55 - 60	13,123	36.22 %	24,315,991,061 JPY	37.08 %
61 - 66	23	0.06 %	42,048,827 JPY	0.06 %
67 - 72	935	2.58 %	1,781,538,674 JPY	2.72 %
73 - 84	254	0.70 %	650,141,171 JPY	0.99 %
Total	36,232	100.00 %	65,574,225,064 JPY	100.00 %

Statistics	
Minimum Original Term in months	6
Maximum Original Term in months	84
Weighted Average Original Term in months	46.60

Distribution by Remaining Term

Length of Remaining Term (months)	Number of Loans	Percentage of Loans	Outstanding Discounted Principal Balance	Percentage of Balance
<= 12	6,283	17.34 %	7,257,960,611 JPY	11.07 %
13 - 18	7,426	20.50 %	12,625,289,946 JPY	19.25 %
19 - 24	7,244	19.99 %	14,142,691,023 JPY	21.57 %
25 - 30	4,786	13.21 %	9,392,964,536 JPY	14.32 %
31 - 36	2,593	7.16 %	4,598,874,252 JPY	7.01 %
37 - 42	2,622	7.24 %	5,094,858,943 JPY	7.77 %
43 - 48	2,603	7.18 %	5,762,554,350 JPY	8.79 %
49 - 54	1,909	5.27 %	4,722,921,869 JPY	7.20 %
55 - 60	526	1.45 %	1,296,025,265 JPY	1.98 %
61 - 66	135	0.37 %	353,361,908 JPY	0.54 %
67 - 72	73	0.20 %	216,317,081 JPY	0.33 %
73 - 84	32	0.09 %	110,405,280 JPY	0.17 %
Total	36,232	100.00 %	65,574,225,064 JPY	100.00 %

Statistics	
Minimum Remaining Term in months	1
Maximum Remaining Term in months	81
Weighted Average Remaining Term in months	27.66

Distribution by Seasoning

Seasoning (months)	Number of Loans	Percentage of Loans	Outstanding Discounted Principal Balance	Percentage of Balance
<= 12	7,666	21.16 %	17,094,045,690 JPY	26.07 %
13 - 18	10,327	28.50 %	20,012,050,060 JPY	30.52 %
19 - 24	7,695	21.24 %	13,734,042,359 JPY	20.94 %
25 - 30	4,733	13.06 %	7,661,428,540 JPY	11.68 %
31 - 36	3,100	8.56 %	4,281,100,149 JPY	6.53 %
37 - 42	1,233	3.40 %	1,529,806,568 JPY	2.33 %
43 - 48	654	1.81 %	676,486,987 JPY	1.03 %
49 - 54	395	1.09 %	348,490,622 JPY	0.53 %
55 - 60	403	1.11 %	227,189,286 JPY	0.35 %
61 - 66	15	0.04 %	8,071,173 JPY	0.01 %
67 - 72	10	0.03 %	1,429,092 JPY	0.00 %
73 - 84	1	0.00 %	84,538 JPY	0.00 %
Total	36,232	100.00 %	65,574,225,064 JPY	100.00 %

Statistics	
Minimum Seasoning in months	2
Maximum Seasoning in months	81
Weighted Average Seasoning in months	18.94

Distribution by Type of Car

Type of Car

Type of Car	Number of Loans	Percentage of Loans	Outstanding Discounted Principal Balance	Percentage of Balance
New	25,978	71.70 %	52,233,534,046 JPY	79.66 %
Used	10,254	28.30 %	13,340,691,018 JPY	20.34 %
Total	36,232	100.00 %	65,574,225,064 JPY	100.00 %

Type of Car: Only Balloon Loans

Type of Car	Number of Loans	Percentage of Loans	Outstanding Discounted Principal Balance	Percentage of Balance
New	23,255	84.02 %	48,741,518,238 JPY	86.98 %
Used	4,423	15.98 %	7,295,606,210 JPY	13.02 %
Total	27,678	100.00 %	56,037,124,448 JPY	100.00 %

Type of Car: Only Equal Instalment Loans

Type of Car	Number of Loans	Percentage of Loans	Outstanding Discounted Principal Balance	Percentage of Balance
New	2,723	31.83 %	3,492,015,808 JPY	36.62 %
Used	5,831	68.17 %	6,045,084,808 JPY	63.38 %
Total	8,554	100.00 %	9,537,100,616 JPY	100.00 %

Distribution by Brand and Model

Make	Model	Number of Loans	Percentage of Loans	Outstanding Discounted Principal Balance	Percentage of Balance
Audi	A1	1,251	3.45 %	1,772,814,564 JPY	2.70 %
	A3	3,131	8.64 %	5,910,760,580 JPY	9.01 %
	A4	2,637	7.28 %	5,698,253,617 JPY	8.69 %
	A5	750	2.07 %	1,922,728,745 JPY	2.93 %
	A6	1,133	3.13 %	3,231,348,921 JPY	4.93 %
	A7	301	0.83 %	1,209,652,102 JPY	1.84 %
	A8	142	0.39 %	608,059,738 JPY	0.93 %
	S1	124	0.34 %	302,075,359 JPY	0.46 %
	S3	492	1.36 %	1,444,117,191 JPY	2.20 %
	S4	114	0.31 %	372,514,457 JPY	0.57 %
	S5	74	0.20 %	268,326,836 JPY	0.41 %
	S6	34	0.09 %	145,039,219 JPY	0.22 %
	S7	33	0.09 %	175,633,663 JPY	0.27 %
	S8	26	0.07 %	131,483,911 JPY	0.20 %
	RS3	7	0.02 %	36,302,103 JPY	0.06 %
	RS4	19	0.05 %	77,439,671 JPY	0.12 %
	RS5	18	0.05 %	93,066,020 JPY	0.14 %
	RS6	18	0.05 %	79,161,039 JPY	0.12 %
	RS7	7	0.02 %	40,402,463 JPY	0.06 %
	Q3	1,077	2.97 %	2,675,349,867 JPY	4.08 %
	Q5	777	2.14 %	2,472,972,757 JPY	3.77 %
	Q7	69	0.19 %	214,019,481 JPY	0.33 %
	RSQ3	10	0.03 %	37,086,606 JPY	0.06 %
TT	716	1.98 %	1,747,583,416 JPY	2.67 %	
R8	14	0.04 %	85,046,882 JPY	0.13 %	
AUDI OTHERS	0	0.00 %	0 JPY	0.00 %	
Subtotal		12,974	35.81 %	30,751,239,208 JPY	46.90 %
Bentley	ARNAGE	1	0.00 %	1,144,782 JPY	0.00 %
	AZURE	0	0.00 %	0 JPY	0.00 %
	CONTINENTAL	18	0.05 %	95,736,754 JPY	0.15 %
	MULSANNE	0	0.00 %	0 JPY	0.00 %
	FLYING SPUR	2	0.01 %	13,612,994 JPY	0.02 %
	BENTLEY OTHERS	0	0.00 %	0 JPY	0.00 %
	Subtotal		21	0.06 %	110,494,530 JPY
Lamborghini	AVENTADOR	0	0.00 %	0 JPY	0.00 %
	DIABLO	0	0.00 %	0 JPY	0.00 %
	GALLARDO	4	0.01 %	18,466,228 JPY	0.03 %
	MULCIELAGO	0	0.00 %	0 JPY	0.00 %
	LAMBORGHINI OTHERS	0	0.00 %	0 JPY	0.00 %
	Subtotal		4	0.01 %	18,466,228 JPY
VW	BEETLE	2,645	7.30 %	4,129,268,956 JPY	6.30 %
	BORA	0	0.00 %	0 JPY	0.00 %
	EOS	8	0.02 %	3,953,975 JPY	0.01 %
	GOLF	9,188	25.36 %	14,714,404,837 JPY	22.44 %
	JETTA	27	0.07 %	14,327,039 JPY	0.02 %
	LUPO	0	0.00 %	0 JPY	0.00 %
	PASSAT	1,574	4.34 %	3,098,400,773 JPY	4.73 %
	POLO	4,740	13.08 %	5,717,444,175 JPY	8.72 %
	SCIROCCO	84	0.23 %	100,623,315 JPY	0.15 %
	SHARAN	803	2.22 %	1,561,898,702 JPY	2.38 %
	TIGUAN	758	2.09 %	1,278,438,356 JPY	1.95 %
	TOUAREG	135	0.37 %	330,030,295 JPY	0.50 %
	TOURAN	1,095	3.02 %	1,692,853,954 JPY	2.58 %
	UP	2,145	5.92 %	2,020,152,054 JPY	3.08 %
	VENTO	0	0.00 %	0 JPY	0.00 %
VW OTHERS	1	0.00 %	1,038,923 JPY	0.00 %	
Subtotal		23,203	64.04 %	34,662,835,354 JPY	52.86 %
Non VW Group Vehicles		30	0.08 %	31,189,744 JPY	0.05 %
Subtotal		30	0.08 %	31,189,744 JPY	0.05 %
Total		36,232	100.00 %	65,574,225,064 JPY	100.00 %

Geographic Distribution by Prefecture

Prefecture	Number of Loans	Percentage of Loans	Outstanding Discounted Principal Balance	Percentage of Balance
Tokyo	5,508	15.20 %	11,372,364,957 JPY	17.34 %
Kanagawa	3,603	9.94 %	6,735,795,605 JPY	10.27 %
Aichi	2,641	7.29 %	4,596,511,278 JPY	7.01 %
Osaka	2,205	6.09 %	4,206,101,844 JPY	6.41 %
Saitama	2,247	6.20 %	3,972,622,710 JPY	6.06 %
Hyogo	1,609	4.44 %	2,909,948,010 JPY	4.44 %
Hokkaido	1,416	3.91 %	2,868,713,379 JPY	4.37 %
Fukuoka	1,431	3.95 %	2,645,702,192 JPY	4.03 %
Chiba	1,485	4.10 %	2,584,284,555 JPY	3.94 %
Shizuoka	1,070	2.95 %	1,817,800,899 JPY	2.77 %
Ibaraki	1,081	2.98 %	1,756,609,848 JPY	2.68 %
Hiroshima	832	2.30 %	1,366,386,865 JPY	2.08 %
Kyoto	697	1.92 %	1,295,213,051 JPY	1.98 %
Tochigi	695	1.92 %	1,198,191,206 JPY	1.83 %
Okayama	640	1.77 %	1,143,097,266 JPY	1.74 %
Gunma	724	2.00 %	1,110,607,771 JPY	1.69 %
Miyagi	658	1.82 %	1,049,013,104 JPY	1.60 %
Mie	529	1.46 %	911,986,737 JPY	1.39 %
Gifu	523	1.44 %	843,995,756 JPY	1.29 %
Nagano	518	1.43 %	824,544,949 JPY	1.26 %
Fukushima	381	1.05 %	643,860,829 JPY	0.98 %
Niigata	395	1.09 %	630,243,619 JPY	0.96 %
Nara	341	0.94 %	627,531,622 JPY	0.96 %
Yamaguchi	362	1.00 %	602,932,267 JPY	0.92 %
Shiga	303	0.84 %	528,962,130 JPY	0.81 %
Oita	290	0.80 %	514,965,847 JPY	0.79 %
Kagawa	272	0.75 %	501,334,938 JPY	0.76 %
Ishikawa	279	0.77 %	465,036,589 JPY	0.71 %
Yamanashi	264	0.73 %	446,142,807 JPY	0.68 %
Fukui	249	0.69 %	446,060,252 JPY	0.68 %
Kumamoto	273	0.75 %	443,254,168 JPY	0.68 %
Kagoshima	250	0.69 %	421,922,512 JPY	0.64 %
Toyama	266	0.73 %	416,392,357 JPY	0.63 %
Yamagata	259	0.71 %	408,010,744 JPY	0.62 %
Wakayama	215	0.59 %	388,982,921 JPY	0.59 %
Nagasaki	171	0.47 %	309,596,685 JPY	0.47 %
Tokushima	177	0.49 %	298,981,991 JPY	0.46 %
Miyazaki	169	0.47 %	285,951,734 JPY	0.44 %
Iwate	164	0.45 %	285,707,004 JPY	0.44 %
Aomori	167	0.46 %	280,730,659 JPY	0.43 %
Ehime	194	0.54 %	270,248,253 JPY	0.41 %
Akita	140	0.39 %	245,411,386 JPY	0.37 %
Tottori	139	0.38 %	236,853,076 JPY	0.36 %
Shimane	134	0.37 %	222,892,033 JPY	0.34 %
Saga	130	0.36 %	222,018,295 JPY	0.34 %
Okinawa	67	0.18 %	118,101,800 JPY	0.18 %
Kouchi	69	0.19 %	102,606,564 JPY	0.16 %
Total	36,232	100.00 %	65,574,225,064 JPY	100.00 %

Distribution by Obligor Concentration
Distribution of Loan Contracts and Vehicles per Obligor

Contract Concentration	Number of Customers	Percentage of Customers	Number of Loans	Percentage of Loans	Outstanding Discounted Principal Balance	Percentage of Balance
1	35,061	97.29 %	35,061	96.77 %	63,042,346,852 JPY	96.14 %
2	909	2.52 %	1,082	2.99 %	2,285,547,700 JPY	3.49 %
3	55	0.15 %	72	0.20 %	203,165,318 JPY	0.31 %
4	6	0.02 %	7	0.02 %	20,080,359 JPY	0.03 %
5	4	0.01 %	8	0.02 %	19,211,048 JPY	0.03 %
6 - 10	1	0.00 %	2	0.01 %	3,873,787 JPY	0.01 %
11 or more	0	0.00 %	0	0.00 %	0 JPY	0.00 %
Total	36,036	100.00 %	36,232	100.00 %	65,574,225,064 JPY	100.00 %

Top 20 Obligor

Number	Number of Contracts	Outstanding Discounted Principal Balance	Percentage of Balance
1	2	13,190,426 JPY	0.02 %
2	3	13,075,051 JPY	0.02 %
3	2	11,134,446 JPY	0.02 %
4	2	10,960,760 JPY	0.02 %
5	2	10,860,961 JPY	0.02 %
6	2	10,390,189 JPY	0.02 %
7	2	10,267,893 JPY	0.02 %
8	2	9,715,567 JPY	0.01 %
9	1	9,676,478 JPY	0.01 %
10	2	9,672,368 JPY	0.01 %
11	3	9,471,955 JPY	0.01 %
12	1	9,411,285 JPY	0.01 %
13	1	9,391,721 JPY	0.01 %
14	1	9,366,038 JPY	0.01 %
15	1	9,287,356 JPY	0.01 %
16	2	9,181,888 JPY	0.01 %
17	2	9,165,116 JPY	0.01 %
18	1	8,966,246 JPY	0.01 %
19	1	8,906,475 JPY	0.01 %
20	1	8,896,935 JPY	0.01 %
Total 1 -20	34	200,989,154 JPY	0.31 %

Remarks:

Figures above are calculated based on each of the Sub-Servicers respectively and not across both of the Sub-Servicers.

Distribution by Contract Start Month

Origination Month	Number of Loans	Percentage of Loans	Outstanding Discounted Principal Balance	Percentage of Balance
12.2009	1	0.00 %	84,538 JPY	0.00 %
01.2010	0	0.00 %	0 JPY	0.00 %
02.2010	0	0.00 %	0 JPY	0.00 %
03.2010	0	0.00 %	0 JPY	0.00 %
04.2010	0	0.00 %	0 JPY	0.00 %
05.2010	0	0.00 %	0 JPY	0.00 %
06.2010	0	0.00 %	0 JPY	0.00 %
07.2010	0	0.00 %	0 JPY	0.00 %
08.2010	0	0.00 %	0 JPY	0.00 %
09.2010	0	0.00 %	0 JPY	0.00 %
10.2010	5	0.01 %	220,582 JPY	0.00 %
11.2010	0	0.00 %	0 JPY	0.00 %
12.2010	2	0.01 %	356,589 JPY	0.00 %
01.2011	2	0.01 %	653,884 JPY	0.00 %
02.2011	1	0.00 %	198,037 JPY	0.00 %
03.2011	5	0.01 %	1,263,967 JPY	0.00 %
04.2011	0	0.00 %	0 JPY	0.00 %
05.2011	1	0.00 %	223,703 JPY	0.00 %
06.2011	2	0.01 %	967,427 JPY	0.00 %
07.2011	3	0.01 %	2,568,816 JPY	0.00 %
08.2011	4	0.01 %	3,047,260 JPY	0.00 %
09.2011	9	0.02 %	5,759,739 JPY	0.01 %
10.2011	77	0.21 %	31,410,577 JPY	0.05 %
11.2011	96	0.26 %	48,620,175 JPY	0.07 %
12.2011	110	0.30 %	65,565,653 JPY	0.10 %
01.2012	42	0.12 %	25,572,538 JPY	0.04 %
02.2012	69	0.19 %	50,260,604 JPY	0.08 %
03.2012	104	0.29 %	84,185,115 JPY	0.13 %
04.2012	42	0.12 %	33,892,601 JPY	0.05 %
05.2012	60	0.17 %	54,029,029 JPY	0.08 %
06.2012	84	0.23 %	68,635,504 JPY	0.10 %
07.2012	54	0.15 %	54,275,236 JPY	0.08 %
08.2012	51	0.14 %	53,473,137 JPY	0.08 %
09.2012	86	0.24 %	83,690,840 JPY	0.13 %
10.2012	80	0.22 %	68,251,562 JPY	0.10 %
11.2012	96	0.26 %	111,961,426 JPY	0.17 %
12.2012	146	0.40 %	150,379,331 JPY	0.23 %
01.2013	112	0.31 %	117,086,240 JPY	0.18 %
02.2013	134	0.37 %	145,117,588 JPY	0.22 %
03.2013	201	0.55 %	230,987,025 JPY	0.35 %
04.2013	147	0.41 %	168,585,747 JPY	0.26 %
05.2013	190	0.52 %	222,496,571 JPY	0.34 %
06.2013	281	0.78 %	345,825,038 JPY	0.53 %
07.2013	216	0.60 %	279,005,044 JPY	0.43 %
08.2013	198	0.55 %	282,907,143 JPY	0.43 %
09.2013	253	0.70 %	360,270,321 JPY	0.55 %
10.2013	318	0.88 %	397,607,713 JPY	0.61 %
11.2013	433	1.20 %	578,032,813 JPY	0.88 %
12.2013	700	1.93 %	1,005,548,552 JPY	1.53 %
01.2014	612	1.69 %	806,759,915 JPY	1.23 %
02.2014	784	2.16 %	1,132,880,835 JPY	1.73 %
03.2014	1,321	3.65 %	1,997,740,842 JPY	3.05 %
04.2014	439	1.21 %	696,190,138 JPY	1.06 %
05.2014	657	1.81 %	1,059,072,717 JPY	1.62 %
06.2014	899	2.48 %	1,470,867,393 JPY	2.24 %
07.2014	718	1.98 %	1,202,368,672 JPY	1.83 %
08.2014	699	1.93 %	1,235,188,778 JPY	1.88 %
09.2014	1,205	3.33 %	2,167,037,260 JPY	3.30 %
10.2014	840	2.32 %	1,443,330,064 JPY	2.20 %
11.2014	1,040	2.87 %	1,848,092,040 JPY	2.82 %
12.2014	1,528	4.22 %	2,885,889,534 JPY	4.40 %
01.2015	1,292	3.57 %	2,290,199,454 JPY	3.49 %
02.2015	1,790	4.94 %	3,099,494,007 JPY	4.73 %
03.2015	3,022	8.34 %	5,512,778,945 JPY	8.41 %
04.2015	973	2.69 %	1,893,758,182 JPY	2.89 %
05.2015	1,462	4.04 %	2,858,128,582 JPY	4.36 %
06.2015	1,901	5.25 %	3,834,448,039 JPY	5.85 %
07.2015	1,431	3.95 %	2,780,781,976 JPY	4.24 %
08.2015	1,538	4.24 %	3,132,154,336 JPY	4.78 %
09.2015	2,252	6.22 %	4,927,881,467 JPY	7.51 %
10.2015	1,237	3.41 %	2,673,207,270 JPY	4.08 %
11.2015	1,477	4.08 %	3,323,055,223 JPY	5.07 %
12.2015	507	1.40 %	1,163,260,059 JPY	1.77 %
01.2016	424	1.17 %	948,105,750 JPY	1.45 %
02.2016	465	1.28 %	1,038,071,204 JPY	1.58 %
03.2016	613	1.69 %	1,388,330,117 JPY	2.12 %
04.2016	234	0.65 %	548,486,717 JPY	0.84 %
05.2016	220	0.61 %	510,283,140 JPY	0.78 %
06.2016	183	0.51 %	434,657,526 JPY	0.66 %
07.2016	54	0.15 %	138,707,217 JPY	0.21 %
08.2016	0	0.00 %	0 JPY	0.00 %
09.2016	0	0.00 %	0 JPY	0.00 %
Total	36,232	100.00 %	65,574,225,064 JPY	100.00 %

Distribution by Contract End Month

Maturity Month	Number of Loans	Percentage of Loans	Outstanding Discounted Principal Balance	Percentage of Balance
10.2016	278	0.77 %	148,734,184 JPY	0.23 %
11.2016	377	1.04 %	282,601,007 JPY	0.43 %
12.2016	456	1.26 %	394,714,529 JPY	0.60 %
01.2017	357	0.99 %	278,399,537 JPY	0.42 %
02.2017	514	1.42 %	453,193,833 JPY	0.69 %
03.2017	823	2.27 %	821,043,911 JPY	1.25 %
04.2017	285	0.79 %	338,436,916 JPY	0.52 %
05.2017	501	1.38 %	645,690,786 JPY	0.98 %
06.2017	676	1.87 %	919,992,527 JPY	1.40 %
07.2017	545	1.50 %	747,960,835 JPY	1.14 %
08.2017	525	1.45 %	758,035,173 JPY	1.16 %
09.2017	946	2.61 %	1,469,157,373 JPY	2.24 %
10.2017	638	1.76 %	949,713,357 JPY	1.45 %
11.2017	832	2.30 %	1,325,716,325 JPY	2.02 %
12.2017	1,234	3.41 %	2,165,043,221 JPY	3.30 %
01.2018	945	2.61 %	1,544,265,262 JPY	2.35 %
02.2018	1,319	3.64 %	2,245,352,606 JPY	3.42 %
03.2018	2,458	6.78 %	4,395,199,175 JPY	6.70 %
04.2018	745	2.06 %	1,367,985,807 JPY	2.09 %
05.2018	1,090	3.01 %	2,073,815,349 JPY	3.16 %
06.2018	1,561	4.31 %	2,992,053,734 JPY	4.56 %
07.2018	1,081	2.98 %	2,028,652,077 JPY	3.09 %
08.2018	1,118	3.09 %	2,202,431,098 JPY	3.36 %
09.2018	1,649	4.55 %	3,477,752,958 JPY	5.30 %
10.2018	848	2.34 %	1,785,878,326 JPY	2.72 %
11.2018	1,013	2.80 %	2,217,426,930 JPY	3.38 %
12.2018	667	1.84 %	1,334,977,359 JPY	2.04 %
01.2019	557	1.54 %	974,745,184 JPY	1.49 %
02.2019	693	1.91 %	1,240,350,022 JPY	1.89 %
03.2019	1,008	2.78 %	1,839,586,715 JPY	2.81 %
04.2019	377	1.04 %	709,273,059 JPY	1.08 %
05.2019	417	1.15 %	728,639,781 JPY	1.11 %
06.2019	550	1.52 %	958,964,877 JPY	1.46 %
07.2019	377	1.04 %	656,677,836 JPY	1.00 %
08.2019	354	0.98 %	619,331,246 JPY	0.94 %
09.2019	518	1.43 %	925,987,453 JPY	1.41 %
10.2019	366	1.01 %	648,005,642 JPY	0.99 %
11.2019	376	1.04 %	695,938,336 JPY	1.06 %
12.2019	441	1.22 %	869,521,104 JPY	1.33 %
01.2020	373	1.03 %	764,070,113 JPY	1.17 %
02.2020	455	1.26 %	880,234,986 JPY	1.34 %
03.2020	611	1.69 %	1,237,088,762 JPY	1.89 %
04.2020	296	0.82 %	605,045,437 JPY	0.92 %
05.2020	401	1.11 %	832,631,578 JPY	1.27 %
06.2020	414	1.14 %	906,756,089 JPY	1.38 %
07.2020	406	1.12 %	861,831,127 JPY	1.31 %
08.2020	448	1.24 %	1,031,397,830 JPY	1.57 %
09.2020	638	1.76 %	1,524,892,289 JPY	2.33 %
10.2020	401	1.11 %	980,499,736 JPY	1.50 %
11.2020	505	1.39 %	1,239,379,545 JPY	1.89 %
12.2020	189	0.52 %	457,970,857 JPY	0.70 %
01.2021	237	0.65 %	583,793,156 JPY	0.89 %
02.2021	245	0.68 %	604,466,989 JPY	0.92 %
03.2021	332	0.92 %	856,811,586 JPY	1.31 %
04.2021	116	0.32 %	287,056,438 JPY	0.44 %
05.2021	160	0.44 %	387,460,371 JPY	0.59 %
06.2021	124	0.34 %	304,649,940 JPY	0.46 %
07.2021	54	0.15 %	137,603,222 JPY	0.21 %
08.2021	27	0.07 %	70,389,896 JPY	0.11 %
09.2021	45	0.12 %	108,865,398 JPY	0.17 %
10.2021	31	0.09 %	76,168,541 JPY	0.12 %
11.2021	38	0.10 %	101,771,419 JPY	0.16 %
12.2021	17	0.05 %	47,792,228 JPY	0.07 %
01.2022	16	0.04 %	35,636,729 JPY	0.05 %
02.2022	15	0.04 %	39,873,416 JPY	0.06 %
03.2022	18	0.05 %	52,119,575 JPY	0.08 %
04.2022	12	0.03 %	29,268,301 JPY	0.04 %
05.2022	8	0.02 %	22,913,645 JPY	0.03 %
06.2022	15	0.04 %	57,401,087 JPY	0.09 %
07.2022	10	0.03 %	29,504,751 JPY	0.04 %
08.2022	7	0.02 %	25,885,961 JPY	0.04 %
09.2022	21	0.06 %	51,343,336 JPY	0.08 %
10.2022	10	0.03 %	30,362,401 JPY	0.05 %
11.2022	14	0.04 %	52,857,013 JPY	0.08 %
12.2022	4	0.01 %	11,509,048 JPY	0.02 %
01.2023	2	0.01 %	8,127,769 JPY	0.01 %
02.2023	1	0.00 %	1,806,995 JPY	0.00 %
03.2023	0	0.00 %	0 JPY	0.00 %
04.2023	0	0.00 %	0 JPY	0.00 %
05.2023	0	0.00 %	0 JPY	0.00 %
06.2023	1	0.00 %	5,742,054 JPY	0.01 %
Total	36,232	100.00 %	65,574,225,064 JPY	100.00 %

Distribution by Monthly Payment

Monthly Payment	Number of Loans	Percentage of Loans	Outstanding Discounted Principal Balance	Percentage of Balance
<= 10,000 JPY	2,010	5.55 %	2,303,793,006 JPY	3.51 %
10,001 JPY - 20,000 JPY	6,646	18.34 %	8,363,408,352 JPY	12.75 %
20,001 JPY - 30,000 JPY	9,296	25.66 %	13,790,820,694 JPY	21.03 %
30,001 JPY - 40,000 JPY	7,101	19.60 %	12,485,616,261 JPY	19.04 %
40,001 JPY - 50,000 JPY	4,191	11.57 %	8,618,235,017 JPY	13.14 %
50,001 JPY - 60,000 JPY	2,606	7.19 %	6,110,758,712 JPY	9.32 %
60,001 JPY - 70,000 JPY	1,414	3.90 %	3,737,465,486 JPY	5.70 %
70,001 JPY - 80,000 JPY	812	2.24 %	2,331,469,784 JPY	3.56 %
80,001 JPY - 90,000 JPY	581	1.60 %	1,729,135,457 JPY	2.64 %
90,001 JPY - 100,000 JPY	472	1.30 %	1,546,256,258 JPY	2.36 %
100,001 JPY - 110,000 JPY	280	0.77 %	980,185,268 JPY	1.49 %
110,001 JPY - 120,000 JPY	204	0.56 %	786,395,172 JPY	1.20 %
120,001 JPY - 130,000 JPY	142	0.39 %	561,888,013 JPY	0.86 %
130,001 JPY - 140,000 JPY	105	0.29 %	464,866,697 JPY	0.71 %
140,001 JPY - 150,000 JPY	85	0.23 %	349,738,942 JPY	0.53 %
>= 150,001 JPY	287	0.79 %	1,414,191,945 JPY	2.16 %
Total	36,232	100.00 %	65,574,225,064 JPY	100.00 %

Distribution by Bonus Payment

Bonus Payment	Number of Loans	Percentage of Loans	Outstanding Discounted Principal Balance	Percentage of Balance
No Bonus Payment	22,098	60.99 %	39,504,982,016 JPY	60.24 %
1 JPY - 25,000 JPY	263	0.73 %	347,984,151 JPY	0.53 %
25,001 JPY - 50,000 JPY	3,457	9.54 %	5,059,136,742 JPY	7.72 %
50,001 JPY - 75,000 JPY	1,202	3.32 %	1,907,457,965 JPY	2.91 %
75,001 JPY - 100,000 JPY	4,904	13.53 %	8,777,008,501 JPY	13.38 %
100,001 JPY - 125,000 JPY	631	1.74 %	1,204,993,227 JPY	1.84 %
125,001 JPY - 150,000 JPY	1,942	5.36 %	4,176,405,456 JPY	6.37 %
150,001 JPY - 175,000 JPY	231	0.64 %	532,011,765 JPY	0.81 %
175,001 JPY - 200,000 JPY	958	2.64 %	2,443,260,590 JPY	3.73 %
200,001 JPY - 225,000 JPY	76	0.21 %	195,834,282 JPY	0.30 %
225,001 JPY - 250,000 JPY	219	0.60 %	633,831,430 JPY	0.97 %
250,001 JPY - 275,000 JPY	19	0.05 %	50,166,496 JPY	0.08 %
275,001 JPY - 300,000 JPY	146	0.40 %	426,916,557 JPY	0.65 %
300,001 JPY - 325,000 JPY	8	0.02 %	30,210,008 JPY	0.05 %
325,001 JPY - 350,000 JPY	27	0.07 %	96,524,565 JPY	0.15 %
350,001 JPY - 375,000 JPY	5	0.01 %	15,303,222 JPY	0.02 %
375,001 JPY - 400,000 JPY	24	0.07 %	85,138,623 JPY	0.13 %
400,001 JPY - 425,000 JPY	1	0.00 %	4,922,117 JPY	0.01 %
425,001 JPY - 450,000 JPY	1	0.00 %	3,240,281 JPY	0.00 %
450,001 JPY - 475,000 JPY	1	0.00 %	4,223,805 JPY	0.01 %
475,001 JPY - 500,000 JPY	14	0.04 %	54,056,983 JPY	0.08 %
500,001 JPY or more	5	0.01 %	20,616,282 JPY	0.03 %
Total	36,232	100.00 %	65,574,225,064 JPY	100.00 %

Distribution by Motor Type

Motor Type	Number of Loans	Percentage of Loans	Outstanding Discounted Principal Balance	Percentage of Balance
EA 189	0	0.00 %	0 JPY	0.00 %
Other	36,232	100.00 %	65,574,225,064 JPY	100.00 %
Total	36,232	100.00 %	65,574,225,064 JPY	100.00 %

Disclaimer

This presentation contains forward-looking statements and information on the business development of the Volkswagen Group. These statements may be spoken or written and can be recognized by terms such as "expects", "anticipates", "intends", "plans", "believes", "seeks", "estimates", "will", or words with similar meaning. These statements are based on assumptions relating to the development of the economies of individual countries, and in particular of the automotive industry, which we have made on the basis of the information available to us and which we consider to be realistic at the time of going to press. The estimates given involve a degree of risk, and the actual developments may differ from those forecast.

Consequently, any unexpected fall in demand or economic stagnation in our key sales markets, such as in Western Europe (and especially Germany) or in the USA, Brazil or China, will have a corresponding impact on the development of our business. The same applies in the event of a significant shift in current exchange rates relative to the US dollar, sterling, yen, Brazilian real, Chinese renminbi and Czech koruna.

If any of these or other risks occur, or if the assumptions underlying any of these statements prove incorrect, the actual results may significantly differ from those expressed or implied by such statements.

We do not update forward-looking statements retrospectively. Such statements are valid on the date of publication and can be superceded.

This information does not constitute an offer to exchange or sell or an offer to exchange or buy any securities.