

Deal Name: Driver Japan five

Originator: Volkswagen Financial Services Japan Ltd.
Gotenyama Trust Tower 17F
7-35 Kitashinagawa 4-chome, Shinagawa-ku
Tokyo 140-0001, Japan

Reporting Entity: Volkswagen Financial Services Japan Ltd.
Treasury Dept.
Gotenyama Trust Tower 17F
7-35 Kitashinagawa 4-chome, Shinagawa-ku
Tokyo 140-0001, Japan
Tel No.: +81(0)3-5792-7261
Fax No.: +81(0)3-3280-7365
E-mail: vwfsjp.abs@vwfs.com

**Trustor of the First Trust:
Servicer:** Volkswagen Financial Services Japan Ltd.

**Trustee of the First Trust:
Trustee of the Second Trust:** Shinsei Trust & Banking Co., Ltd.
Nihonbashi Muromachi Nomura Building
4-3, Nihonbashi-muromachi 2-chome, Chuo-ku,
Tokyo 103-0022, Japan
Trust Management Division
Tel No.: +81(0)3-6880-6300
Fax No.: +81(0)3-4560-2756
E-mail: OpsKinsai@shinseitrust.com



Contents

Page	Tables of Contents
1	Front Page
2	Contents
3	Deal Overview
4	Deal Overview: Counterparties I
5	Deal Overview: Counterparties II
6	Information regarding the TBI and ABL to the Second Trust
7	Pool Information
8	Available Distribution
9	Waterfall
10	Credit Enhancement
11	Cumulative Gross Loss Ratio & Performance Trigger
12	Cumulative Gross Loss Ratio & Performance Trigger (Chart)
13	Default & Delinquencies
14	Run Out Schedule (Previous)
15	Run Out Schedule
16	Expected Amortization to the Second Trust
17	Sub-Servicer
18	Brand
19	New and Used
20	Product Type
21	RV
22	Brand New and Used
23	Customer Type
24	Outstanding Discounted Principal Balance
25	Original Principal Amount
26	Interest Rate paid by the Obligor
27	Original Term
28	Remaining Term
29	Seasoning
30	Type of Car
31	Brand and Model
32	Geographic Dist. by Prefecture
33	Obligor Concentration
34	Contract Start Month
35	Contract End Month
36	Monthly payment
37	Bonus payment
38	Mortor Type

Deal Overview

Cut Off Date:	2016/02/10		
Trust Commencement Date:	2016/02/24	Legal Maturity of the First Trust:	2024/06/27
Monthly Period:	2016/07/11	to	2016/08/10
Reporting Date:	2016/08/18		
Reporting Frequency:	monthly		
Period No.:	6		
Remittance Date:	2016/08/23		
Advance Payment Date:	2016/08/23		
Cash Adjustment Date:	2016/08/23		
Additional Entrustment Date:	2016/08/25		
Trust Calculation Date:	2016/08/25		
Trust Calculation Period:	2016/07/27	to	2016/08/25
First Trust Payment Date:	2016/08/26		
Second Trust Payment Date:	2016/08/29		
Interest Calculation Period:	2016/07/29	to	2016/08/29
Next Reporting Date:	2016/09/16		

Pool information at the Initial Cut off Date

	Number of Contracts	Outstanding Discounted Principal Balance	Outstanding Nominal Balance
Outstanding Pool	31,976	64,176,234,995 JPY	66,824,671,200 JPY

Credit Type	Percentage of Loans	Outstanding Discounted Principal Balance	Percentage of Balance
Balloon	75.37 %	53,826,542,156 JPY	83.87 %
Equal Instalment Loan	24.63 %	10,349,692,839 JPY	16.13 %
Total	100.00 %	64,176,234,995 JPY	100.00 %

Type of Car	Percentage of Loans	Outstanding Discounted Principal Balance	Percentage of Balance
New	72.19 %	50,995,472,631 JPY	79.46 %
Used	27.81 %	13,180,762,364 JPY	20.54 %
Total	100.00 %	64,176,234,995 JPY	100.00 %

Deal Overview: Counterparties I
Joint Lead Managers:
Merrill Lynch Japan Securities Co., Ltd.

Nihonbashi 1-chome Building,
 1-4-1, Nihonbashi,
 Chuo-ku,
 Tokyo 103-8230, Japan

Shinsei Securities Co., Ltd.

Nihonbashi Muromachi Nomura Building,
 2-4-3, Nihonbashi-muromachi,
 Chuo-ku,
 Tokyo 103-0022, Japan

Trust Management Account Bank:
The Bank of Tokyo-Mitsubishi UFJ, Ltd.

4-2 Toranomon 1-chome,
 Minato-ku
 Tokyo 105-0001, Japan

Rating								
Moody's			Fitch			R&I		
Long Term	Short Term	Outlook	Long Term	Short Term	Outlook	Long Term	Short Term	Outlook
n.a.	n.a.	n.a.	A	F1	Stable	n.a.	n.a.	n.a.
n.a.	n.a.	n.a.	n.a.	n.a.	n.a.	n.a.	n.a.	n.a.
A1	P-1	Stable	A	F1	Negative	AA-	a-1+	Stable

Originator:
Trustor of the First Trust:
Servicer:
Volkswagen Financial Services Japan Ltd.

Gotenyama Trust Tower 17F
 7-35 Kitashinagawa 4-chome, Shinagawa-ku
 Tokyo 140-0001, Japan

Trustee of the First Trust:
Trustee of the Second Trust:
Shinsei Trust & Banking Co., Ltd.

Attn.: Driver Japan five
 Trust Management Division

ABL Lender to the First Trust:
Trustor of the Second Trust:
Merrill Lynch Japan Securities Co., Ltd.
Seller of the Trust Beneficial
Interest of the Second Trust
Merrill Lynch Japan Securities Co., Ltd.
Shinsei Securities Co., Ltd.

Deal Overview: Counterparties II

Rating Agencies:

Moody's SF Japan K.K.

Attn.: Driver Japan five
 Structure Finance Group Monitoring Division
 5-1 Atago 2-chome, Minato-ku
 Tokyo 105-6220, Japan
 E-mail: monitor.msfi@moodys.com

Fitch Ratings Japan Limited

Attn.: Driver Japan five
 Structured Finance
 Kojimachi Crystal City East Wing 3rd Floor,
 4-8 Kōjimachi, Chiyoda-ku,
 Tokyo 102-0083, Japan
 E-mail: tokyo.surveillance@fitchratings.com

Rating and Investment Information, Inc.

Attn.: Monitoring Group Department:Structured Finance Department
 Structured Finance Department
 Nihonbashi 1-chome Mitsui Bldg.,
 4-1, Nihonbashi 1-chome, Chuo-ku
 Tokyo 103-0027, Japan
 E-mail: sfmonitor@r-i.co.jp

Rating of VW

Volkswagen Financial Services AG

Volkswagen AG

Rating								
Moody's			Fitch			R&I		
Short Term	Long Term	Outlook	Short Term	Long Term	Outlook	Short Term	Long Term	Outlook
P-1	A2	Negative	n.a.	n.a.	n.a.	n.a.	n.a.	n.a.
P-2	A3	Negative	F2	BBB+	Negative	n.a.	n.a.	n.a.

Information regarding Trust Beneficial Interest of the Second Trust & Asset Backed Loan to the Second Trust

Rating Details

	<u>TBI</u>	<u>ABL</u>
Rating at Issue Date		
Moody's	Aaa(sf)	Aaa(sf)
Fitch	AAAsf	AAAsf
R&I	AAA	AAA
Current Rating		
Moody's	Aaa(sf)	Aaa(sf)
Fitch	AAAsf	AAAsf
R&I	AAA	AAA

Information on TBI & ABL

	<u>TBI</u>	<u>ABL</u>
Initial Balance	31,000,000,000 JPY	29,000,000,000 JPY
Expected Maturity Date	2019/09/30	2019/09/30
Legal Maturity of the Second Trust	2024/06/28	2024/06/28
Payment Dates	28th	28th
Business Day Convention	Modified Following	Modified Following
Listing	None	—

Information on Interest

	<u>TBI</u>	<u>ABL</u>
Fixed/ Floating	Fixed	Fixed
Current Coupon	0.19%	0.19%
Day Count Convention	30/360	30/360

Selling Restriction

The holders of the Beneficial Interest and the ABL Lenders* are prohibited from dividing, assigning, pledging or creating any other security interest over any of the Beneficial Interest and the Asset Backed Loans without the prior written approval of the Trustee of the Second Trust.

(*)The holders of the Beneficial Interest and the ABL Lenders are limited to specified investors (*tokutei toushika*) as defined under Paragraph 31 of Article 2 of the Financial Instruments and Exchange Act (Law no.25 of 1948 as amended).

Clean-Up Call

VWFS Japan as the Trustor of the First Trust has a right at its option to exercise a clean-up call to repurchase of all, but not part, of the outstanding Auto Loan Receivables from the Trustee of the First Trust on any Trust Calculation Date, the Discounted Principal Balance of all outstanding Auto Loan Receivables is expected to be less than ten percent (10%) of the Discounted Principal Balance of the Initial Auto Loan Receivables as of the Initial Cut-off Date after the distribution pursuant to Article 18.1 of the First Trust Agreement on the immediately following First Trust Payment Date.

Pool Information
Pool Balance on Initial Cut-Off Date

Status	Number of Contracts	Outstanding Discounted Principal Balance
Normal	31,976	64,176,234,995 JPY
Cancellation	0	0 JPY
Early Termination	0	0 JPY
Defaulted Receivables	0	0 JPY
Matured	0	0 JPY
Refinance Option	0	0 JPY
Repurchase	0	0 JPY
Total	31,976	64,176,234,995 JPY

Pool Balance before entrustment of Additional Auto Loan Receivables

Status	Number of Contracts on previous EoP	Outstanding Discounted Principal Balance on previous EoP	Number of Contracts "as Collections" during the relevant Monthly Period*	Outstanding Discounted Principal Balance "as Collections" during the relevant Monthly Period*	Number of Contracts EoP before entrustment of Additional Auto Loan Receivables	Outstanding Discounted Principal Balance EoP before entrustment of Additional Auto Loan Receivables
Normal	34,555	65,083,487,628 JPY	33,993	1,838,797,246 JPY	33,993	62,374,882,120 JPY
Cancellation	0	0 JPY	1	1,239,698 JPY	0	0 JPY
Early Termination	0	0 JPY	346	724,064,388 JPY	0	0 JPY
Defaulted Receivables	0	0 JPY	3	5,279,386 JPY	0	0 JPY
Matured	0	0 JPY	176	101,258,435 JPY	0	0 JPY
Refinance Option	0	0 JPY	36	37,966,355 JPY	0	0 JPY
Repurchase	0	0 JPY	0	0 JPY	0	0 JPY
Total	34,555	65,083,487,628 JPY	34,555	2,708,605,508 JPY	33,993	62,374,882,120 JPY

Pool Balance after entrustment of Additional Auto Loan Receivables

Status	Number of Contracts EoP before entrustment of Additional Auto Loan Receivables	Outstanding Discounted Principal Balance EoP before entrustment of Additional Auto Loan Receivables	Number of Contracts of Additional Auto Loan Receivables	Outstanding Discounted Principal Balance of Additional Auto Loan Receivables	Number of Contracts EoP after entrustment of Additional Auto Loan Receivables	Outstanding Discounted Principal Balance EoP after entrustment of Additional Auto Loan Receivables
Normal	33,993	62,374,882,120 JPY	1,415	2,948,960,736 JPY	35,408	65,323,842,856 JPY
Cancellation	0	0 JPY	0	0 JPY	0	0 JPY
Early Termination	0	0 JPY	0	0 JPY	0	0 JPY
Defaulted Receivables	0	0 JPY	0	0 JPY	0	0 JPY
Matured	0	0 JPY	0	0 JPY	0	0 JPY
Refinance Option	0	0 JPY	0	0 JPY	0	0 JPY
Repurchase	0	0 JPY	0	0 JPY	0	0 JPY
Total	33,993	62,374,882,120 JPY	1,415	2,948,960,736 JPY	35,408	65,323,842,856 JPY

Limits on Eligibility Criteria

Status Limits on Eligibility Criteria (v) (including Additional Entrustment)	Current Exposure in %	Limits in % of the aggregate Discounted Principal Balance of the Auto Loan Receivables outstanding	Status
(i) on Used Purchased Vehicle	20.26 %	35 %	OK
(ii) on Non-VW Vehicles	0.05 %	5 %	OK
(iii) on Balloon Payment	44.58 %	50 %	OK

Outstanding Balances

Monthly Period: from 2016/07/11 to 2016/08/10
Reporting Date: 2016/08/18
Trust Calculation Date: 2016/08/25

Outstanding Balances

	Number of Contracts	Aggregate Amount of the Discounted Principal Balance	Aggregate Amount of the Nominal Balance
Balance on the previous EoP	34,555	65,083,487,628 JPY	67,506,866,900 JPY
Balance after counting on the Collections during the relevant	33,993	62,374,882,120 JPY	64,659,728,400 JPY
Balance of Additional Auto Loan Receivables	1,415	2,948,960,736 JPY	3,082,886,900 JPY
Aggregate Amount of Auto Loan Receivables	35,408	65,323,842,856 JPY	67,742,615,300 JPY

Collections

	Number of Contracts	Aggregate Amount of the Discounted Principal Balance	Aggregate Amount of the Nominal Balance
Collections: Amortization of current contracts	33,993	1,838,797,246 JPY	1,953,752,800 JPY
Collections: Cancellation	1	1,239,698 JPY	1,290,000 JPY
Collections: Early Termination	346	724,064,388 JPY	726,219,294 JPY
Collections: Defaulted Receivables	3	5,279,386 JPY	5,298,374 JPY
Collections: Matured	176	101,258,435 JPY	101,448,500 JPY
Collections: Refinance Option	36	37,966,355 JPY	38,040,000 JPY
Collections: Repurchase	0	0 JPY	0 JPY
Sum	34,555	2,708,605,508 JPY	2,826,048,968 JPY

Available Distribution Amount

	Number of Contracts	Aggregate Amount of the Nominal Balance
(a) the Collections for the Monthly Period with respect to such Trust Calculation Date	34,555	2,826,048,968 JPY
(b) drawings from the Cash Collateral Ledger in accordance with Article 18.3 of the First Trust Agreement	0	0 JPY
(c) net investment earnings from Eligible Investments	0	0 JPY
(d) net proceeds from the sale or disposal of the Trust Assets of the First Trust	0	0 JPY
(e) any amount which is carried over from the immediately preceding Trust Calculation Date	0	0 JPY
Sum	34,555	2,826,048,968 JPY

Waterfall

There is no distinction between principal and interest, and all collections go through a single priority of payments			
		Payment	Remaining Amount
Available Distribution Amount	plus	2,826,048,968 JPY	2,826,048,968 JPY
(a) an amount necessary for the payment of all taxes and public charges to be paid to the relevant public authority by the immediately following First Trust Payment Date.	less	0 JPY	2,826,048,968 JPY
(b) an amount necessary for the payment of all Fees for the Trustee of the First Trust to be paid to the Trustee of the First Trust by the immediately following First Trust Payment Date.	less	439,312 JPY	2,825,609,656 JPY
(c) an amount necessary for the payment of the Servicing Fee to be paid to the Servicer by the immediately following First Trust Payment Date.	less	58,575,138 JPY	2,767,034,518 JPY
(d) an amount necessary for the payment of the Trust Expenses of the First Trust as provided in Article 23.1 (including the Rating Fees, Costs of the Second Trust and those fees not otherwise covered by (b) or (c) above) to be paid to the relevant party by the immediately following First Trust Payment Date (including any amounts advanced by the Trustee of the First Trust pursuant to Article 23.3)	less	448,060 JPY	2,766,586,458 JPY
(e) an amount necessary for the payment of overdue and unpaid interest on the Asset Backed Loans to the First Trust (if any) to be paid to the Trustee of the Second Trust by the immediately following First Trust Payment Date.	less	0 JPY	2,766,586,458 JPY
(f) an amount necessary for the payment to the Trustee of the Second Trust of interest on the Asset Backed Loan to the First Trust accruing during the relevant Interest Calculation Period	less	9,500,000 JPY	2,757,086,458 JPY
(g) an amount necessary to top up the balance thereof until it is equal to the Cash Collateral Ledger Target Balance	less	0 JPY	2,757,086,458 JPY
(h) (i) prior to the expiration of the Revolving Period: an amount necessary for the redemption of any Additional Senior Beneficial Interest;	less	2,757,086,458 JPY	0 JPY
(ii) following the expiration of the Revolving Period and prior to the occurrence of an Early Amortization Event, an amount necessary for the payment to the Trustee of the Second Trust of the Asset Backed Loan Principal Payment Amount for the relevant First Trust Payment Date.			
(iii) following the occurrence of the Early Amortization Event, an amount necessary for the payment to the Trustee of the Second Trust of the remaining principal balance of the Asset Backed Loan to the First Trust.			
(i) an amount necessary for the payment to the Trustee of the First Trust of any Indemnified Amounts which are not compensated by the Trustor of the First Trust	less	0 JPY	0 JPY
(j) an amount necessary for the payment to the Subordinated Beneficiary of the Subordinated Beneficial Principal Payment Amount for the relevant First Trust Payment Date.	less	0 JPY	0 JPY
(k) (i) prior to the expiration of the Revolving Period, then (x) if a transfer is made under (j) above, such remaining amount will be transferred to the Expenses Distribution Ledger for payment to the Subordinated Beneficiary as a payment of earnings on the Subordinated Beneficial Interest, and such payment shall be made on the First Trust Payment Date immediately following such Trust Calculation Date or (y) if no transfer is made under (j) above, such remaining amount will be carried forward to the next Trust Calculation Date.	less	0 JPY	0 JPY
(ii) following the expiration of the Revolving Period and prior to the occurrence of an Early Amortization Event, then such remaining amount will be transferred to the Expenses Distribution Ledger for payment to the Subordinated Beneficiary as a payment of earnings on the Subordinated Beneficial Interest, and such payment shall be made on the First Trust Payment Date immediately following such Trust Calculation Date.			
(iii) following the occurrence of an Early Amortization Event, the remaining amount in the Trust Collection Ledger will be carried forward to the next Trust Calculation Date.			

Credit Enhancement

Subordinated Principal Balance as of the relevant First Trust Payment Date

	Percentage of Aggregate Discounted Principal Balance	Value
(i) the aggregate amount of the Discounted Principal Balance of all Auto Loan Receivables outstanding		65,323,842,856 JPY
(ii) Asset Backed Loan Principal Balance on the relevant First Trust Payment Date		60,000,000,000 JPY
Overcollateralization (= (i) - (ii))	8.15 %	5,323,842,856 JPY
Trust Collection Ledger which is carried over from the immediately preceding Trust Calculation Date	0.00 %	0 JPY
The amount in the Cash Collateral Ledger	0.58 %	380,000,000 JPY
Subordinated Principal Balance	8.73 %	5,703,842,856 JPY

Trust Management Account (TMA)

	in JPY	+/-	in JPY (previous)
Initial Balance on Cash Entrustment Date	380,000,000 JPY		0 JPY
Outstanding Balance on First Trust Payment Date	380,000,000 JPY	0 JPY	380,000,000 JPY
(a) Expenses Distribution Ledger	0 JPY	0 JPY	0 JPY
(b) Trust Collection Ledger	0 JPY	0 JPY	0 JPY
(c) Cash Collateral Ledger	380,000,000 JPY	0 JPY	380,000,000 JPY
Cash Collateral Ledger Target Balance	380,000,000 JPY		

Calculation of Credit Enhancement

Driver Japan five's Credit Enhancement consists of the items listed above in the Subordinated Principal Balance as of the relevant date of determination (immediately following the First Trust Payment Date). The result provides an absolute value, which will be applied to the (amortized) Aggregate Discounted Principal Balance as of the end of the relevant date.

The transaction has a Revolving Period of 12 months until February 2017.

Asset Backed Loan Overcollateralization Percentage is (i) prior to the expiration of the Revolving Period, 8.5%, and (ii) following the expiration of the Revolving Period, 11.5%; provided, in each case no Credit Enhancement Increase Condition shall be in effect. After a Level 1 Credit Enhancement Increase Condition in effect, 17% and after a Level 2 Credit Enhancement Increase Condition is in effect, 100%.

Cumulative Gross Loss & Cumulative Repurchased Receivables

Cumulative Defaulted Receivables

	Number of Contracts	Write Offs
Beginning of Period	13	41,966,919 JPY
Defaulted Receivables	3	5,279,386 JPY
End of Period	16	47,246,305 JPY

Cumulative Gross Loss Ratio

The sum of the Discounted Principal Balance of all Auto Loan Receivables that have become Defaulted Receivables from the Initial Cut-off Date through to the end of Monthly Period immediately preceding the relevant Trust Calculation Date

47,246,305 JPY 0.07 %

The sum of (i) the aggregate Discounted Principal Balance of the Initial Auto Loan Receivables as of the Initial Cut-off Date and (ii) the aggregate Discounted Principal Balance as of the relevant Trust Calculation Date of all Additional Auto Loan Receivables (if any) entrusted on the Additional Entrustment Dates which fall six months prior to the relevant Trust Calculation Date.

64,176,234,995 JPY

Performance Triggers

Asset Backed Loan Overcollateralization Percentage was implemented to assure on a monthly basis that no cash is paid to lower steps in the waterfall unless there is sufficient Overcollateralization to support the transaction.

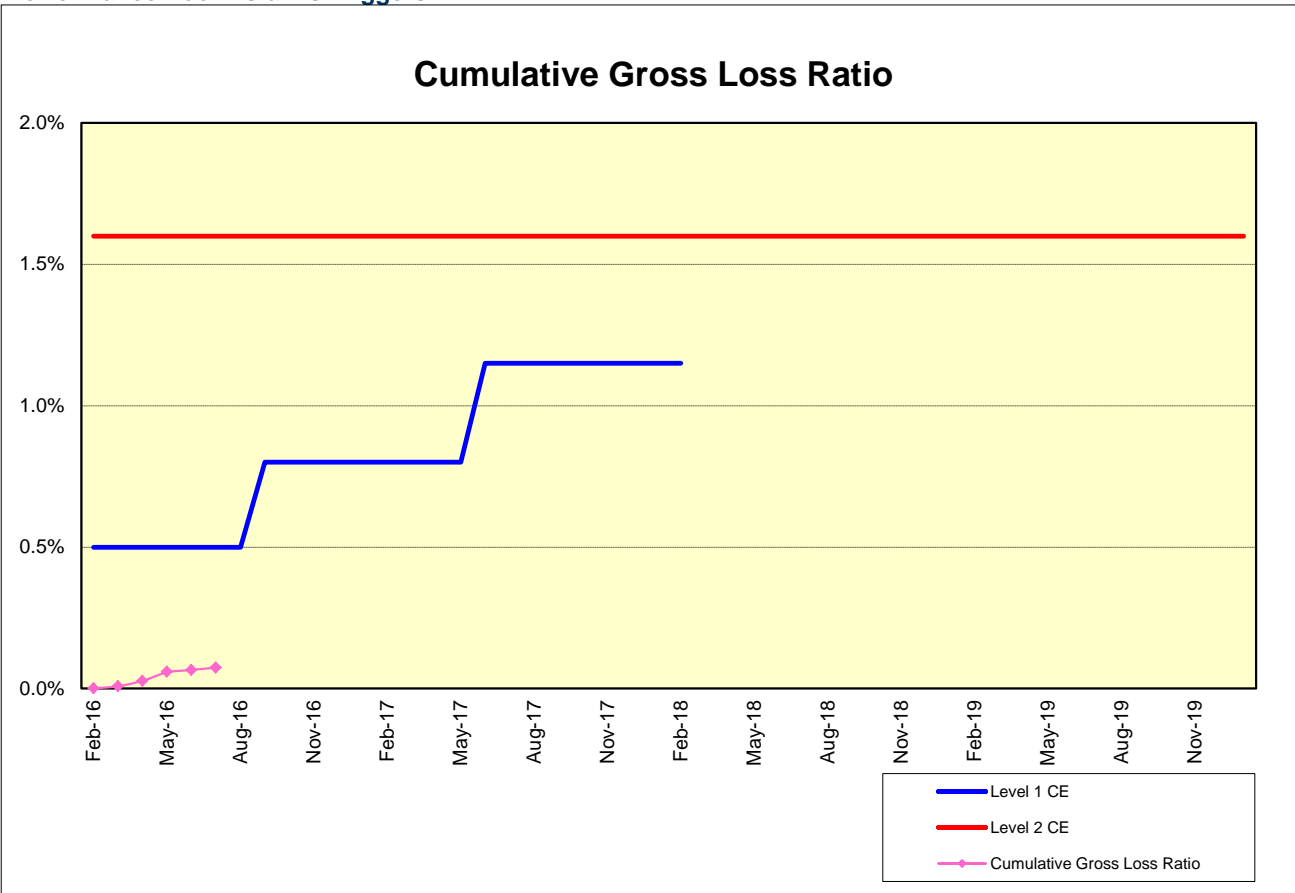
The performance trigger in form of a Credit Enhancement Increase Condition will be activated when the Cumulative Gross Loss Ratio exceeds the defined limits. In this case the Overcollateralization will be increased accordingly.

Levels	Credit Enhancement increase condition	Credit Enhancement increase condition in place?
Level 1 (i)	Cumulative Gross Loss Ratio exceeds 0.5% for any First Trust Payment Date on or prior to August 2016	no
Level 1 (ii)	Cumulative Gross Loss Ratio exceeds 0.8% for any First Trust Payment Date from September 2016 to May 2017	no
Level 1 (iii)	Cumulative Gross Loss Ratio exceeds 1.15% for any First Trust Payment Date from June 2017 to February 2018	no
Level 2	Cumulative Gross Loss Ratio exceeds 1.6% for any First Trust Payment Date	no

	Asset Backed Loan Overcollateralization Percentage
Prior to the expiration of the Revolving Period (No Credit Enhancement Increase Condition is in effect)	8.50 %
Following the expiration of Revolving Period (No Credit Enhancement Increase Condition is in effect)	11.50 %
After a Level 1 Credit Enhancement Increase Condition is in effect	17.00 %
After a Level 2 Credit Enhancement Increase Condition is in effect	100.00 %
Current Asset Backed Loan Overcollateralization Percentage	8.15 %

Cumulative Gross Loss & Cumulative Repurchased Receivables

Performance Pool vis-a-vis Triggers



Cumulative Repurchased Receivables

	Number of Contracts	Repurchase Price
Beginning of Period	0	0 JPY
Repurchased Receivables	0	0 JPY
End of Period	0	0 JPY

Defaulted and Delinquent Contracts

Information of Delinquencies and Defaults

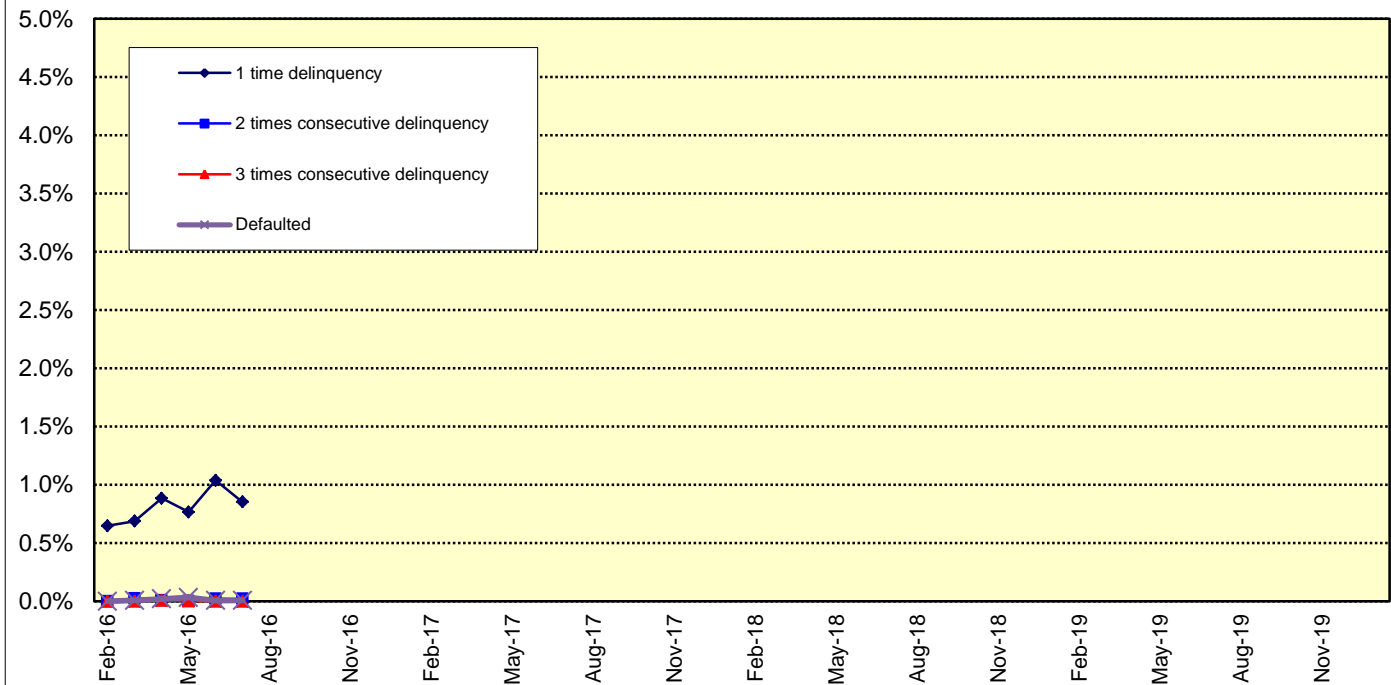
Current Reporting Period	Number of Contracts	Percentage of Contracts (*)	Outstanding Discounted Principal Balance	Percentage of Principal Balance (*)	Outstanding Nominal Balance	Percentage of Nominal Balance (*)
Delinquent	289	0.85 %	569,928,836 JPY	0.88 %	596,180,000 JPY	0.89 %
Default	3	0.01 %	5,279,386 JPY	0.01 %	5,298,374 JPY	0.01 %

(*) Based on the previous EoP

Delinquency Profile (Information Purpose Only)

Days in Arrears	Number of Contracts	Percentage of Contracts	Outstanding Discounted Principal Balance	Percentage of Principal Balance	Outstanding Nominal Balance	Percentage of Nominal Balance
1	284	0.80 %	556,754,155 JPY	0.85 %	582,212,000 JPY	0.86 %
2	5	0.01 %	13,174,681 JPY	0.02 %	13,968,000 JPY	0.02 %
3	0	0.00 %	0 JPY	0.00 %	0 JPY	0.00 %
Total	289	0.82 %	569,928,836 JPY	0.87 %	596,180,000 JPY	0.88 %

Delinquent / Defaulted (Gross Loss) Ratio



Run Out Schedule

ROS on the previous EoP on 2016/07/10

Next Payment Month	Number of Contracts	ABS Outstanding Principal	ABS Outstanding Interest	Outstanding Installment	ABS Remaining Principal	ABS Remaining Interest	ABS Remaining Installment
06.2016	34,555	65,083,487,628 JPY	2,423,379,272 JPY	67,506,866,900 JPY	0 JPY	0 JPY	0 JPY
07.2016	34,555	63,083,694,819 JPY	2,306,867,481 JPY	65,390,562,300 JPY	1,999,792,809 JPY	116,511,791 JPY	2,116,304,600 JPY
08.2016	34,343	61,624,966,668 JPY	2,194,124,132 JPY	63,819,090,800 JPY	1,458,728,151 JPY	112,743,349 JPY	1,571,471,500 JPY
09.2016	34,105	60,222,058,683 JPY	2,084,103,417 JPY	62,306,162,100 JPY	1,402,907,985 JPY	110,020,715 JPY	1,512,928,700 JPY
10.2016	33,694	58,926,402,693 JPY	1,976,647,707 JPY	60,903,050,400 JPY	1,295,655,990 JPY	107,455,710 JPY	1,403,111,700 JPY
11.2016	33,412	57,512,242,208 JPY	1,871,564,892 JPY	59,383,807,100 JPY	1,414,160,485 JPY	105,082,815 JPY	1,519,243,300 JPY
12.2016	33,013	55,029,485,033 JPY	1,768,991,067 JPY	56,798,476,100 JPY	2,482,757,175 JPY	102,573,825 JPY	2,585,331,000 JPY
01.2017	32,559	53,402,937,138 JPY	1,670,968,762 JPY	55,073,905,900 JPY	1,626,547,895 JPY	98,022,305 JPY	1,724,570,200 JPY
02.2017	32,204	51,951,406,282 JPY	1,575,951,518 JPY	53,527,357,800 JPY	1,451,530,856 JPY	95,017,244 JPY	1,546,548,100 JPY
03.2017	31,695	50,270,934,347 JPY	1,483,557,853 JPY	51,754,492,200 JPY	1,680,471,935 JPY	92,393,665 JPY	1,772,865,600 JPY
04.2017	30,896	48,963,807,329 JPY	1,394,139,371 JPY	50,357,946,700 JPY	1,307,127,018 JPY	89,418,482 JPY	1,396,545,500 JPY
05.2017	30,614	47,456,314,592 JPY	1,307,016,608 JPY	48,763,331,200 JPY	1,507,492,737 JPY	87,122,763 JPY	1,594,615,500 JPY
06.2017	30,123	45,342,495,022 JPY	1,222,412,778 JPY	46,564,907,800 JPY	2,113,819,570 JPY	84,603,830 JPY	2,198,423,400 JPY
07.2017	29,458	43,252,713,697 JPY	1,141,383,003 JPY	44,394,096,700 JPY	2,089,781,325 JPY	81,029,775 JPY	2,170,811,100 JPY
08.2017	28,925	41,661,319,394 JPY	1,063,996,806 JPY	42,725,316,200 JPY	1,591,394,303 JPY	77,386,197 JPY	1,668,780,500 JPY
09.2017	28,413	39,740,621,219 JPY	989,335,381 JPY	40,729,956,600 JPY	1,920,698,175 JPY	74,661,425 JPY	1,995,359,600 JPY
10.2017	27,483	38,213,846,485 JPY	917,748,215 JPY	39,131,594,700 JPY	1,526,774,734 JPY	71,587,166 JPY	1,598,361,900 JPY
11.2017	26,856	36,521,256,448 JPY	848,732,552 JPY	37,369,989,000 JPY	1,692,590,037 JPY	69,015,663 JPY	1,761,605,700 JPY
12.2017	26,062	33,525,120,455 JPY	782,452,645 JPY	34,307,573,100 JPY	2,996,135,993 JPY	66,279,907 JPY	3,062,219,900 JPY
01.2018	24,876	31,549,326,129 JPY	720,986,671 JPY	32,270,312,800 JPY	1,975,794,326 JPY	61,465,974 JPY	2,037,260,300 JPY
02.2018	23,966	29,433,994,102 JPY	662,876,098 JPY	30,096,870,200 JPY	2,115,332,027 JPY	58,110,573 JPY	2,173,442,600 JPY
03.2018	22,715	26,151,579,382 JPY	608,079,018 JPY	26,759,658,400 JPY	3,282,414,720 JPY	54,797,080 JPY	3,337,211,800 JPY
04.2018	20,386	24,747,317,797 JPY	557,829,003 JPY	25,305,146,800 JPY	1,404,261,585 JPY	50,250,015 JPY	1,454,511,600 JPY
05.2018	19,682	22,960,253,962 JPY	509,841,538 JPY	23,470,095,500 JPY	1,787,063,835 JPY	47,987,465 JPY	1,835,051,300 JPY
06.2018	18,643	20,468,943,833 JPY	464,682,667 JPY	20,933,626,500 JPY	2,491,310,129 JPY	45,158,871 JPY	2,536,469,000 JPY
07.2018	17,154	18,527,011,002 JPY	423,418,298 JPY	18,950,429,300 JPY	1,941,932,831 JPY	41,264,369 JPY	1,983,197,200 JPY
08.2018	16,136	16,799,372,600 JPY	385,654,900 JPY	17,185,027,500 JPY	1,727,638,402 JPY	37,763,398 JPY	1,765,401,800 JPY
09.2018	15,044	14,488,113,363 JPY	350,921,637 JPY	14,839,035,000 JPY	2,311,259,237 JPY	34,733,263 JPY	2,345,992,500 JPY
10.2018	13,456	13,172,305,823 JPY	320,042,777 JPY	13,492,348,600 JPY	1,315,807,540 JPY	30,878,860 JPY	1,346,686,400 JPY
11.2018	12,628	11,697,000,754 JPY	291,541,946 JPY	11,988,542,700 JPY	1,475,305,069 JPY	28,500,831 JPY	1,503,805,900 JPY
12.2018	11,665	10,536,422,654 JPY	265,616,746 JPY	10,802,039,400 JPY	1,160,578,100 JPY	25,925,200 JPY	1,186,503,300 JPY
01.2019	11,100	9,765,840,640 JPY	242,090,360 JPY	10,007,931,000 JPY	770,582,014 JPY	23,526,386 JPY	794,108,400 JPY
02.2019	10,608	9,074,149,728 JPY	220,197,472 JPY	9,294,347,200 JPY	691,690,912 JPY	21,892,888 JPY	713,583,800 JPY
03.2019	10,000	8,283,442,923 JPY	199,727,577 JPY	8,483,170,500 JPY	790,706,805 JPY	20,469,895 JPY	811,176,700 JPY
04.2019	9,129	7,843,298,877 JPY	180,899,923 JPY	8,024,198,800 JPY	440,144,046 JPY	18,827,654 JPY	458,971,700 JPY
05.2019	8,827	7,430,027,717 JPY	163,030,183 JPY	7,593,057,900 JPY	413,271,160 JPY	17,869,740 JPY	431,140,900 JPY
06.2019	8,489	6,860,754,718 JPY	146,116,782 JPY	7,006,871,500 JPY	569,272,999 JPY	16,913,401 JPY	586,186,400 JPY
07.2019	8,031	6,283,512,492 JPY	130,478,908 JPY	6,413,991,400 JPY	577,242,226 JPY	15,637,874 JPY	592,880,100 JPY
08.2019	7,676	5,849,448,266 JPY	116,136,934 JPY	5,965,585,200 JPY	434,064,226 JPY	14,341,974 JPY	448,406,200 JPY
09.2019	7,327	5,394,242,919 JPY	102,772,381 JPY	5,497,015,300 JPY	455,205,347 JPY	13,364,553 JPY	468,569,900 JPY
10.2019	6,823	5,023,934,839 JPY	90,422,661 JPY	5,114,357,500 JPY	370,308,080 JPY	12,349,720 JPY	382,657,800 JPY
11.2019	6,469	4,668,221,975 JPY	78,925,325 JPY	4,747,147,300 JPY	355,712,864 JPY	11,497,336 JPY	367,210,200 JPY
12.2019	6,110	4,098,521,467 JPY	68,228,233 JPY	4,166,749,700 JPY	569,700,508 JPY	10,697,092 JPY	580,397,600 JPY
01.2020	5,699	3,700,111,160 JPY	58,806,940 JPY	3,758,918,100 JPY	398,410,307 JPY	9,421,293 JPY	407,831,600 JPY
02.2020	5,355	3,349,268,188 JPY	50,306,212 JPY	3,399,574,400 JPY	350,842,972 JPY	8,500,728 JPY	359,343,700 JPY
03.2020	4,919	2,957,588,787 JPY	42,611,913 JPY	3,000,200,700 JPY	391,679,401 JPY	7,694,299 JPY	399,373,700 JPY
04.2020	4,360	2,720,409,286 JPY	35,808,914 JPY	2,756,218,200 JPY	237,179,501 JPY	6,802,999 JPY	243,982,500 JPY
05.2020	4,086	2,437,732,602 JPY	29,556,098 JPY	2,467,288,700 JPY	282,676,684 JPY	6,252,816 JPY	288,929,500 JPY
06.2020	3,710	2,117,243,438 JPY	23,963,762 JPY	2,141,207,200 JPY	320,489,164 JPY	5,592,336 JPY	326,081,500 JPY
07.2020	3,332	1,792,439,902 JPY	19,125,498 JPY	1,811,565,400 JPY	324,803,536 JPY	4,838,264 JPY	329,641,800 JPY
08.2020	2,961	1,494,487,388 JPY	15,032,912 JPY	1,509,520,300 JPY	297,952,514 JPY	4,092,586 JPY	302,045,100 JPY
09.2020	2,542	1,114,903,170 JPY	11,613,230 JPY	1,126,516,400 JPY	379,584,218 JPY	3,419,682 JPY	383,003,900 JPY
10.2020	1,935	872,703,186 JPY	9,028,414 JPY	881,731,600 JPY	242,199,984 JPY	2,584,816 JPY	244,784,800 JPY
11.2020	1,548	576,675,175 JPY	7,008,525 JPY	583,683,700 JPY	296,028,011 JPY	2,019,889 JPY	298,047,900 JPY
12.2020	1,071	457,688,106 JPY	5,659,294 JPY	463,347,400 JPY	118,987,069 JPY	1,349,231 JPY	120,336,300 JPY
01.2021	938	345,187,755 JPY	4,581,545 JPY	349,769,300 JPY	112,500,351 JPY	1,077,749 JPY	113,578,100 JPY
02.2021	776	254,996,949 JPY	3,739,351 JPY	258,736,300 JPY	90,190,806 JPY	842,194 JPY	91,033,000 JPY
03.2021	639	164,797,701 JPY	3,078,099 JPY	167,875,800 JPY	90,199,248 JPY	661,252 JPY	90,860,500 JPY
04.2021	473	136,027,555 JPY	2,600,745 JPY	138,628,300 JPY	28,770,146 JPY	477,354 JPY	29,247,500 JPY
05.2021	416	120,617,864 JPY	2,191,636 JPY	122,809,500 JPY	15,409,691 JPY	409,109 JPY	15,818,800 JPY
06.2021	361	102,302,781 JPY	1,825,219 JPY	104,128,000 JPY	18,315,083 JPY	366,417 JPY	18,681,500 JPY
07.2021	305	83,335,535 JPY	1,511,065 JPY	84,846,600 JPY	18,967,246 JPY	314,154 JPY	19,281,400 JPY
08.2021	274	70,761,960 JPY	1,253,040 JPY	72,015,000 JPY	12,573,575 JPY	258,025 JPY	12,831,600 JPY
09.2021	251	61,099,873 JPY	1,032,427 JPY	62,132,300 JPY	9,662,087 JPY	220,613 JPY	9,882,700 JPY
10.2021	209	52,894,962 JPY	840,638 JPY	53,735,600 JPY	8,204,911 JPY	191,789 JPY	8,396,700 JPY
11.2021	180	45,759,552 JPY	673,648 JPY	46,433,200 JPY	7,135,410 JPY	166,990 JPY	7,302,400 JPY
12.2021	142	36,141,141 JPY	528,559 JPY	36,669,700 JPY	9,618,411 JPY	145,089 JPY	9,763,500 JPY
01.2022	126	29,060,932 JPY	413,768 JPY	29,474,700 JPY	7,080,209 JPY	114,791 JPY	7,195,000 JPY
02.2022	111	24,588,864 JPY	321,436 JPY	24,910,300 JPY	4,472,068 JPY	92,332 JPY	4,564,400 JPY
03.2022	98	20,662,314 JPY	243,286 JPY	20,905,600 JPY	3,926,550 JPY	78,150 JPY	4,004,700 JPY
04.2022	86	17,267,064 JPY	177,536 JPY	17,444,600 JPY	3,395,250 JPY	65,750 JPY	3,461,000 JPY
05.2022	77	14,185,168 JPY	122,532 JPY	14,307,700 JPY	3,081,896 JPY	55,004 JPY	3,136,900 JPY
06.2022	73	10,209,551 JPY	77,349 JPY	10,286,900 JPY	3,975,617 JPY	45,183 JPY	4,020,800 JPY
07.2022	60	6,223,272 JPY	44,828 JPY	6,268,100 JPY	3,986,279 JPY	32,521 JPY	4,018,800 JPY
08.2022	49	3,973,995 JPY	25,005 JPY	3,999,000 JPY	2,249,277 JPY	19,823 JPY	2,269,100 JPY
09.2022	43	2,290,350 JPY	12,350 JPY	2,302,700 JPY	1,683,645 JPY	12,655 JPY	1,696,300 JPY
10.2022	25	1,155,745 JPY	5,055 JPY	1,160,800 JPY	1,134,605 JPY	7,295 JPY	1,141,900 JPY
11.2022	17	371,928 JPY	1,372 JPY	373,300 JPY	783,817 JPY	3,683 JPY	787,500 JPY
12.2022	5	58,713 JPY	187 JPY	58,900 JPY	313,215 JPY	1,185 JPY	314,400 JPY
01.2023	1	0 JPY	0 JPY	0 JPY	58,713 JPY	187 JPY	58,900 JPY

Run Out Schedule

ROS on the relevant EoP on 2016/08/10

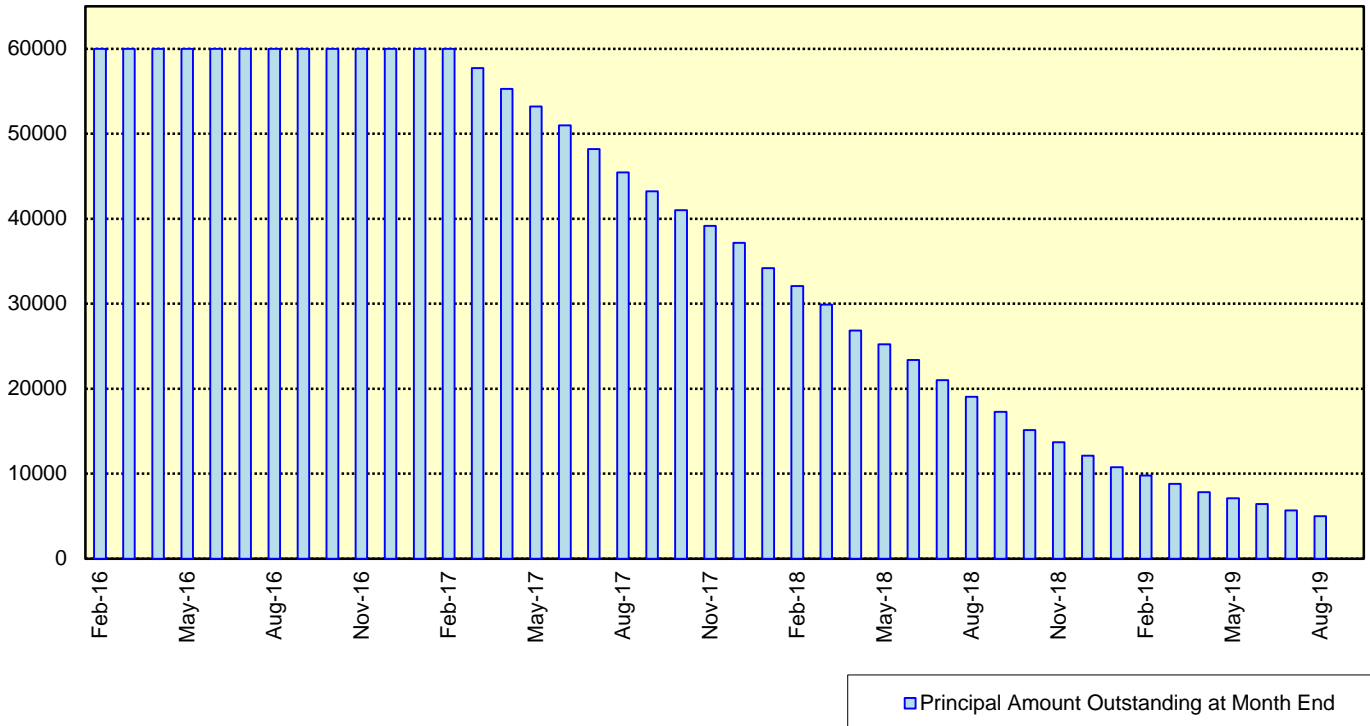
Next Payment Month	Number of Contracts	ABS Outstanding Principal	ABS Outstanding Interest	Outstanding Installment	ABS Remaining Principal	ABS Remaining Interest	ABS Remaining Installment
07.2016	35,408	65,323,842,856 JPY	2,418,772,444 JPY	67,742,615,300 JPY	0 JPY	0 JPY	0 JPY
08.2016	35,408	63,833,259,783 JPY	2,301,786,317 JPY	66,135,046,100 JPY	1,490,583,073 JPY	116,986,127 JPY	1,607,569,200 JPY
09.2016	35,176	62,406,448,323 JPY	2,187,581,677 JPY	64,594,030,000 JPY	1,426,811,460 JPY	114,204,640 JPY	1,541,016,100 JPY
10.2016	34,771	61,074,756,355 JPY	2,075,995,545 JPY	63,150,751,900 JPY	1,331,691,968 JPY	111,586,132 JPY	1,443,278,100 JPY
11.2016	34,487	59,633,978,255 JPY	1,966,849,745 JPY	61,600,828,000 JPY	1,440,778,100 JPY	109,145,800 JPY	1,549,923,900 JPY
12.2016	34,092	57,087,931,017 JPY	1,860,272,483 JPY	58,948,203,500 JPY	2,546,047,238 JPY	106,577,262 JPY	2,652,624,500 JPY
01.2017	33,633	55,409,562,398 JPY	1,758,373,002 JPY	57,167,935,400 JPY	1,678,368,619 JPY	101,899,481 JPY	1,780,268,100 JPY
02.2017	33,269	53,925,028,618 JPY	1,659,586,382 JPY	55,584,615,000 JPY	1,484,533,780 JPY	98,786,620 JPY	1,583,320,400 JPY
03.2017	32,750	52,202,587,143 JPY	1,563,482,757 JPY	53,766,069,900 JPY	1,722,441,475 JPY	96,103,625 JPY	1,818,545,100 JPY
04.2017	31,936	50,860,655,242 JPY	1,470,430,558 JPY	52,331,085,800 JPY	1,341,931,901 JPY	93,052,199 JPY	1,434,984,100 JPY
05.2017	31,653	49,320,426,847 JPY	1,379,744,453 JPY	50,700,171,300 JPY	1,540,228,395 JPY	90,686,105 JPY	1,630,914,500 JPY
06.2017	31,157	47,150,263,475 JPY	1,291,643,525 JPY	48,441,907,000 JPY	2,170,163,372 JPY	88,100,928 JPY	2,258,264,300 JPY
07.2017	30,485	44,997,690,803 JPY	1,207,228,997 JPY	46,204,919,800 JPY	2,152,572,672 JPY	84,414,528 JPY	2,236,987,200 JPY
08.2017	29,938	43,366,905,845 JPY	1,126,578,955 JPY	44,493,484,800 JPY	1,630,784,958 JPY	80,650,042 JPY	1,711,435,000 JPY
09.2017	29,417	41,403,686,519 JPY	1,048,728,681 JPY	42,452,415,200 JPY	1,963,219,326 JPY	77,850,274 JPY	2,041,069,600 JPY
10.2017	28,469	39,837,067,655 JPY	974,021,845 JPY	40,811,089,500 JPY	1,566,618,864 JPY	74,706,836 JPY	1,641,325,700 JPY
11.2017	27,829	38,096,129,595 JPY	901,959,805 JPY	38,998,089,400 JPY	1,740,938,060 JPY	72,062,040 JPY	1,813,000,100 JPY
12.2017	27,019	35,026,803,872 JPY	832,722,328 JPY	35,859,526,200 JPY	3,069,325,723 JPY	69,237,477 JPY	3,138,563,200 JPY
01.2018	25,811	33,004,708,598 JPY	768,445,802 JPY	33,773,154,400 JPY	2,022,095,274 JPY	64,276,526 JPY	2,088,371,800 JPY
02.2018	24,881	30,844,345,275 JPY	707,595,525 JPY	31,551,940,800 JPY	2,160,363,323 JPY	60,850,277 JPY	2,221,213,600 JPY
03.2018	23,614	27,499,578,555 JPY	650,132,345 JPY	28,149,710,900 JPY	3,344,766,720 JPY	57,463,180 JPY	3,402,229,900 JPY
04.2018	21,235	26,048,221,065 JPY	597,316,035 JPY	26,645,537,100 JPY	1,451,357,490 JPY	52,816,310 JPY	1,504,173,800 JPY
05.2018	20,511	24,227,453,149 JPY	546,849,451 JPY	24,774,302,600 JPY	1,820,767,916 JPY	50,466,584 JPY	1,871,234,500 JPY
06.2018	19,461	21,675,733,969 JPY	499,270,831 JPY	22,175,004,800 JPY	2,551,719,180 JPY	47,578,620 JPY	2,589,297,800 JPY
07.2018	17,946	19,668,311,083 JPY	455,686,017 JPY	20,123,997,100 JPY	2,007,422,886 JPY	43,584,814 JPY	2,051,007,700 JPY
08.2018	16,903	17,892,455,144 JPY	415,717,556 JPY	18,308,172,700 JPY	1,775,855,939 JPY	39,968,461 JPY	1,815,824,400 JPY
09.2018	15,796	15,528,521,552 JPY	378,868,248 JPY	15,907,389,800 JPY	2,363,933,592 JPY	36,849,308 JPY	2,400,782,900 JPY
10.2018	14,185	14,184,088,302 JPY	345,958,298 JPY	14,530,046,600 JPY	1,344,433,250 JPY	32,909,950 JPY	1,377,343,200 JPY
11.2018	13,347	12,657,921,499 JPY	315,484,901 JPY	12,973,406,600 JPY	1,526,166,803 JPY	30,473,397 JPY	1,556,640,200 JPY
12.2018	12,362	11,389,201,620 JPY	287,684,280 JPY	11,676,885,900 JPY	1,268,719,879 JPY	27,800,621 JPY	1,296,520,500 JPY
01.2019	11,746	10,566,088,806 JPY	262,474,494 JPY	10,828,563,300 JPY	823,112,814 JPY	25,209,786 JPY	848,322,600 JPY
02.2019	11,228	9,811,118,358 JPY	239,000,642 JPY	10,050,119,000 JPY	754,970,448 JPY	23,473,852 JPY	778,444,300 JPY
03.2019	10,582	8,929,877,601 JPY	217,051,899 JPY	9,146,929,500 JPY	881,240,757 JPY	21,948,743 JPY	903,189,500 JPY
04.2019	9,648	8,430,185,361 JPY	196,907,939 JPY	8,627,093,300 JPY	499,692,240 JPY	20,143,960 JPY	519,836,200 JPY
05.2019	9,313	7,961,962,281 JPY	177,815,419 JPY	8,139,777,700 JPY	468,223,080 JPY	19,092,520 JPY	487,315,600 JPY
06.2019	8,946	7,369,300,504 JPY	159,773,296 JPY	7,529,073,800 JPY	592,661,777 JPY	18,042,123 JPY	610,703,900 JPY
07.2019	8,483	6,764,489,883 JPY	143,056,617 JPY	6,907,546,500 JPY	604,810,621 JPY	16,716,679 JPY	621,527,300 JPY
08.2019	8,122	6,312,593,282 JPY	127,696,418 JPY	6,440,289,700 JPY	451,896,601 JPY	15,360,199 JPY	467,256,800 JPY
09.2019	7,769	5,839,520,418 JPY	113,351,382 JPY	5,952,871,800 JPY	473,072,864 JPY	14,345,036 JPY	487,417,900 JPY
10.2019	7,255	5,455,970,651 JPY	100,059,149 JPY	5,556,029,800 JPY	383,549,767 JPY	13,292,233 JPY	396,842,000 JPY
11.2019	6,895	5,081,607,689 JPY	87,648,211 JPY	5,169,255,900 JPY	374,362,962 JPY	12,410,938 JPY	386,773,900 JPY
12.2019	6,526	4,482,766,701 JPY	76,078,099 JPY	4,558,844,800 JPY	598,840,988 JPY	11,570,112 JPY	610,411,100 JPY
01.2020	6,100	4,058,681,365 JPY	65,846,235 JPY	4,124,527,600 JPY	424,085,336 JPY	10,231,864 JPY	434,317,200 JPY
02.2020	5,740	3,689,634,013 JPY	56,592,287 JPY	3,746,226,300 JPY	369,047,352 JPY	9,253,948 JPY	378,301,300 JPY
03.2020	5,295	3,278,297,134 JPY	48,184,766 JPY	3,326,481,900 JPY	411,336,879 JPY	8,407,521 JPY	419,744,400 JPY
04.2020	4,714	3,021,234,465 JPY	40,711,735 JPY	3,061,946,200 JPY	257,062,669 JPY	7,473,031 JPY	264,535,700 JPY
05.2020	4,424	2,721,898,205 JPY	33,831,795 JPY	2,755,730,000 JPY	299,336,260 JPY	6,879,940 JPY	306,216,200 JPY
06.2020	4,032	2,382,858,690 JPY	27,648,910 JPY	2,410,507,600 JPY	339,039,515 JPY	6,182,885 JPY	345,222,400 JPY
07.2020	3,643	2,036,128,961 JPY	22,261,339 JPY	2,058,390,300 JPY	346,729,729 JPY	5,387,571 JPY	352,117,300 JPY
08.2020	3,259	1,720,058,936 JPY	17,662,964 JPY	1,737,721,900 JPY	316,070,025 JPY	4,598,375 JPY	320,668,400 JPY
09.2020	2,829	1,321,625,653 JPY	13,778,347 JPY	1,335,404,000 JPY	398,433,283 JPY	3,884,617 JPY	402,317,900 JPY
10.2020	2,204	1,066,807,486 JPY	10,771,914 JPY	1,077,579,400 JPY	254,818,167 JPY	3,006,433 JPY	257,824,600 JPY
11.2020	1,812	756,032,093 JPY	8,358,307 JPY	764,390,400 JPY	310,775,393 JPY	2,413,607 JPY	313,189,000 JPY
12.2020	1,320	609,926,152 JPY	6,650,048 JPY	616,576,200 JPY	146,105,941 JPY	1,708,259 JPY	147,814,200 JPY
01.2021	1,163	471,393,730 JPY	5,268,970 JPY	476,662,700 JPY	138,532,422 JPY	1,381,078 JPY	139,913,500 JPY
02.2021	970	351,840,723 JPY	4,174,377 JPY	356,015,100 JPY	119,553,007 JPY	1,094,593 JPY	120,647,600 JPY
03.2021	798	207,723,987 JPY	3,319,713 JPY	211,043,700 JPY	144,116,736 JPY	854,664 JPY	144,971,400 JPY
04.2021	556	161,278,355 JPY	2,756,245 JPY	164,034,600 JPY	46,445,632 JPY	563,468 JPY	47,009,100 JPY
05.2021	471	126,104,008 JPY	2,297,992 JPY	128,402,000 JPY	35,174,347 JPY	458,253 JPY	35,632,600 JPY
06.2021	378	106,595,355 JPY	1,915,745 JPY	108,511,100 JPY	19,508,653 JPY	382,247 JPY	19,890,900 JPY
07.2021	318	87,101,422 JPY	1,588,978 JPY	88,690,400 JPY	19,493,933 JPY	326,767 JPY	19,820,700 JPY
08.2021	287	73,979,715 JPY	1,319,785 JPY	75,299,500 JPY	13,121,707 JPY	269,193 JPY	13,390,900 JPY
09.2021	260	64,073,529 JPY	1,089,571 JPY	65,163,100 JPY	9,906,186 JPY	230,214 JPY	10,136,400 JPY
10.2021	218	55,623,819 JPY	888,881 JPY	56,512,700 JPY	8,449,710 JPY	200,690 JPY	8,650,400 JPY
11.2021	188	48,258,109 JPY	713,691 JPY	48,971,800 JPY	7,365,710 JPY	175,190 JPY	7,540,900 JPY
12.2021	150	37,868,732 JPY	561,068 JPY	38,429,800 JPY	10,389,377 JPY	152,623 JPY	10,542,000 JPY
01.2022	134	30,640,404 JPY	440,896 JPY	31,081,300 JPY	7,228,328 JPY	120,172 JPY	7,348,500 JPY
02.2022	118	25,952,697 JPY	343,603 JPY	26,296,300 JPY	4,687,707 JPY	97,293 JPY	4,785,000 JPY
03.2022	104	21,826,060 JPY	261,140 JPY	22,087,200 JPY	4,126,637 JPY	82,463 JPY	4,209,100 JPY
04.2022	89	18,321,617 JPY	191,683 JPY	18,513,300 JPY	3,504,443 JPY	69,457 JPY	3,573,900 JPY
05.2022	80	15,130,179 JPY	133,321 JPY	15,263,500 JPY	3,191,438 JPY	58,362 JPY	3,249,800 JPY
06.2022	76	10,864,672 JPY	85,128 JPY	10,949,800 JPY	4,265,507 JPY	48,193 JPY	4,313,700 JPY
07.2022	63	6,867,580 JPY	50,520 JPY	6,918,100 JPY	3,997,092 JPY	34,608 JPY	4,031,700 JPY
08.2022	53	4,456,755 JPY	28,645 JPY	4,485,400 JPY	2,410,825 JPY	21,875 JPY	2,432,700 JPY
09.2022	47	2,611,048 JPY	14,452 JPY	2,625,500 JPY	1,845,707 JPY	14,193 JPY	1,859,900 JPY
10.2022	28	1,336,864 JPY	6,136 JPY	1,343,000 JPY	1,274,184 JPY	8,316 JPY	1,282,500 JPY
11.2022	19	450,924 JPY	1,876 JPY	452,800 JPY	885,940 JPY	4,260 JPY	890,200 JPY
12.2022	6	111,461 JPY	439 JPY	111,900 JPY	339,463 JPY	1,437 JPY	340,900 JPY
01.2023	2	26,416 JPY	84 JPY	26,500 JPY	85,045 JPY	355 JPY	85,400 JPY
02.2023	1	0 JPY	0 JPY	0 JPY	26,416 JPY	84 JPY	26,500 JPY

Expected Amortisation

Expected Amortization to the Second Trust

JPY mil.

Assuming a Clean-Up Call at 10% of the Initial Outstanding Balance, annual prepayments of 10% and 0% defaults.



Distribution by Sub-Servicer

Sub-Servicer	Number of Loans	Percentage of Loans	Outstanding Principal Balance	Percentage of Balance
Cedyna	21,456	60.60 %	40,399,773,941 JPY	61.85 %
Jaccs	13,952	39.40 %	24,924,068,915 JPY	38.15 %
Total	35,408	100.00 %	65,323,842,856 JPY	100.00 %

Distribution by Brand

Make	Number of Loans	Percentage of Loans	Outstanding Discounted Principal Balance	Percentage of Balance
VW	22,616	63.87 %	34,339,686,941 JPY	52.57 %
Audi	12,741	35.98 %	30,828,678,799 JPY	47.19 %
Bentley	18	0.05 %	98,740,877 JPY	0.15 %
Lamborghini	5	0.01 %	26,418,384 JPY	0.04 %
Other	28	0.08 %	30,317,855 JPY	0.05 %
Total	35,408	100.00 %	65,323,842,856 JPY	100.00 %

Distribution by New and Used
Distribution by New and Used

New or Used	Number of Loans	Percentage of Loans	Outstanding Discounted Principal Balance	Percentage of Balance
New	25,448	71.87 %	52,088,346,579 JPY	79.74 %
Used	8,241	23.27 %	12,248,070,913 JPY	18.75 %
Used (Prolonged)	1,719	4.85 %	987,425,364 JPY	1.51 %
Total	35,408	100.00 %	65,323,842,856 JPY	100.00 %

Distribution by Brand New and Used

New or Used	Number of Loans	Percentage of Loans	Outstanding Discounted Principal Balance	Percentage of Balance
VW New	16,466	46.50 %	28,054,455,791 JPY	42.95 %
VW Used	4,719	13.33 %	5,530,564,759 JPY	8.47 %
VW Used (Prolonged)	1,431	4.04 %	754,666,391 JPY	1.16 %
Audi New	8,968	25.33 %	23,959,005,613 JPY	36.68 %
Audi Used	3,485	9.84 %	6,636,914,213 JPY	10.16 %
Audi Used (Prolonged)	288	0.81 %	232,758,973 JPY	0.36 %
Other	51	0.14 %	155,477,116 JPY	0.24 %
Total	35,408	100.00 %	65,323,842,856 JPY	100.00 %

Distribution by Product Type

Loan Type List

Loan Type	Description
100	Volkswagen Owner's Plan
100	Audi Owner's Plan
100	Lamborghini Auto Loan
100	Bentley Auto Loan
101	Twin Loan
105	Refinanced Volkswagen Solutions
106	Refinanced Volkswagen Das Welt Auto with refinance option *
106	Refinanced Audi S-Loan/ S-Loan Plus
106	Refinanced Lamborghini Hyper Premium Plan
106	Refinanced Bentley My Flying B
140	Volkswagen Solutions
150	Volkswagen Das Welt Auto with refinance option **
150	Audi S-Loan
150	Lamborghini Hyper Premium Plan
150	Bentley My Flying B
151	Audi S-Loan Plus

(*) The name was changed from "Refinanced Volkswagen GUC with refinance option" effective from 1 February 2012.

No other changes were made to auto loan agreements.

(**) The name was changed from "Volkswagen GUC with refinance option" effective from 1 February 2012.

No other changes were made to auto loan agreements.

Product Type

Loan Type	Number of Loans	Percentage of Loans	Outstanding Discounted Principal Balance	Percentage of Balance
100	6,764	19.10 %	8,748,834,894 JPY	13.39 %
101	9	0.03 %	2,506,091 JPY	0.00 %
105	1,366	3.86 %	741,630,957 JPY	1.14 %
106	354	1.00 %	246,165,369 JPY	0.38 %
140-VFJ	2,879	8.13 %	4,837,729,285 JPY	7.41 %
140-Dealer	11,752	33.19 %	21,005,258,238 JPY	32.16 %
150	11,374	32.12 %	27,159,424,677 JPY	41.58 %
151	910	2.57 %	2,582,293,345 JPY	3.95 %
Total	35,408	100.00 %	65,323,842,856 JPY	100.00 %

Credit Type

Credit Type	Number of Loans	Percentage of Loans	Outstanding Discounted Principal Balance	Percentage of Balance
Balloon Type Loan	26,915	76.01 %	55,584,705,545 JPY	85.09 %
Equal Instalment Type Loan	8,493	23.99 %	9,739,137,311 JPY	14.91 %
Total	35,408	100.00 %	65,323,842,856 JPY	100.00 %

Distribution by RV

Loan Type	Number of Loans	Percentage of Balance	Outstanding Discounted Principal Balance
100/101/105/106	8,493	14.91 %	9,739,137,311 JPY
140-VFJ (excl. balloon)		3.52 %	2,299,521,856 JPY
140-VFJ (balloon)		3.89 %	2,538,207,429 JPY
140-VFJ	2,879	7.41 %	4,837,729,285 JPY
140-Dealer (excl. balloon)		15.77 %	10,301,692,699 JPY
140-Dealer (balloon)		16.39 %	10,703,565,539 JPY
140-Dealer	11,752	32.16 %	21,005,258,238 JPY
150 (excl. balloon)		19.81 %	12,938,998,315 JPY
150 (balloon)		21.77 %	14,220,426,362 JPY
150	11,374	41.58 %	27,159,424,677 JPY
151 (excl. balloon)		1.41 %	924,054,645 JPY
151 (balloon)		2.54 %	1,658,238,700 JPY
151	910	3.95 %	2,582,293,345 JPY
Total	35,408	100.00 %	65,323,842,856 JPY

Type of Payment Portion	Percentage of Balance	Outstanding Discounted Principal Balance
Monthly Installment Portion	55.42 %	36,203,404,826 JPY
Balloon Portion	44.58 %	29,120,438,030 JPY
Total	100.00 %	65,323,842,856 JPY

Distribution by Brand New and Used
Audi

New or Used	Number of Loans	Percentage of Loans	Outstanding Discounted Principal Balance	Percentage of Balance
New	8,968	70.39 %	23,959,005,613 JPY	77.72 %
Used	3,773	29.61 %	6,869,673,186 JPY	22.28 %
Total	12,741	100.00 %	30,828,678,799 JPY	100.00 %

Bentley

New or Used	Number of Loans	Percentage of Loans	Outstanding Discounted Principal Balance	Percentage of Balance
New	12	66.67 %	68,472,296 JPY	69.35 %
Used	6	33.33 %	30,268,581 JPY	30.65 %
Total	18	100.00 %	98,740,877 JPY	100.00 %

Lamborghini

New or Used	Number of Loans	Percentage of Loans	Outstanding Discounted Principal Balance	Percentage of Balance
New	1	20.00 %	5,144,371 JPY	19.47 %
Used	4	80.00 %	21,274,013 JPY	80.53 %
Total	5	100.00 %	26,418,384 JPY	100.00 %

VW

New or Used	Number of Loans	Percentage of Loans	Outstanding Discounted Principal Balance	Percentage of Balance
New	16,466	72.81 %	28,054,455,791 JPY	81.70 %
Used	6,150	27.19 %	6,285,231,150 JPY	18.30 %
Total	22,616	100.00 %	34,339,686,941 JPY	100.00 %

OTHER

New or Used	Number of Loans	Percentage of Loans	Outstanding Discounted Principal Balance	Percentage of Balance
New	1	3.57 %	1,268,508 JPY	4.18 %
Used	27	96.43 %	29,049,347 JPY	95.82 %
Total	28	100.00 %	30,317,855 JPY	100.00 %

Distribution by Customer Type

Customer Type

Customer Type	Number of Loans	Percentage of Loans	Outstanding Discounted Principal Balance	Percentage of Balance
Retail	31,818	89.86 %	55,878,260,294 JPY	85.54 %
Corporate	3,590	10.14 %	9,445,582,562 JPY	14.46 %
Total	35,408	100.00 %	65,323,842,856 JPY	100.00 %

Distribution by Outstanding Discounted Principal Balance

Outstanding Discounted Principal Balance	Number of Loans	Percentage of Loans	Outstanding Discounted Principal Balance	Percentage of Balance
<= 500,000 JPY	2,736	7.73 %	790,774,737 JPY	1.21 %
500,001 JPY - 1,000,000 JPY	5,257	14.85 %	4,011,669,743 JPY	6.14 %
1,000,001 JPY - 1,500,000 JPY	7,018	19.82 %	8,832,570,091 JPY	13.52 %
1,500,001 JPY - 2,000,000 JPY	7,517	21.23 %	13,102,502,935 JPY	20.06 %
2,000,001 JPY - 2,500,000 JPY	5,236	14.79 %	11,684,247,155 JPY	17.89 %
2,500,001 JPY - 3,000,000 JPY	3,073	8.68 %	8,376,250,493 JPY	12.82 %
3,000,001 JPY - 3,500,000 JPY	1,841	5.20 %	5,945,287,904 JPY	9.10 %
3,500,001 JPY - 4,000,000 JPY	1,010	2.85 %	3,766,892,230 JPY	5.77 %
4,000,001 JPY - 4,500,000 JPY	631	1.78 %	2,670,348,572 JPY	4.09 %
4,500,001 JPY - 5,000,000 JPY	388	1.10 %	1,836,489,644 JPY	2.81 %
5,000,001 JPY - 6,000,000 JPY	389	1.10 %	2,110,205,457 JPY	3.23 %
6,000,001 JPY - 7,000,000 JPY	180	0.51 %	1,160,731,841 JPY	1.78 %
7,000,001 JPY - 8,000,000 JPY	83	0.23 %	614,568,522 JPY	0.94 %
8,000,001 JPY - 9,000,000 JPY	40	0.11 %	338,007,341 JPY	0.52 %
9,000,001 JPY - 10,000,000 JPY	9	0.03 %	83,296,191 JPY	0.13 %
>= 10,000,001 JPY	0	0.00 %	0 JPY	0.00 %
Total	35,408	100.00 %	65,323,842,856 JPY	100.00 %

Statistics

Minimum Outstanding Discounted Principal Balance	10,075 JPY
Maximum Outstanding Discounted Principal Balance	9,681,132 JPY
Average Outstanding Discounted Principal Balance	1,844,889 JPY

Distribution by Original Principal Amount

Original Principal Balance	Number of Loans	Percentage of Loans	Outstanding Discounted Principal Balance	Percentage of Balance
<= 500,000 JPY	345	0.97 %	72,797,575 JPY	0.11 %
500,001 JPY - 1,000,000 JPY	2,573	7.27 %	1,275,705,284 JPY	1.95 %
1,000,001 JPY - 1,500,000 JPY	4,277	12.08 %	3,699,088,979 JPY	5.66 %
1,500,001 JPY - 2,000,000 JPY	6,254	17.66 %	7,759,765,043 JPY	11.88 %
2,000,001 JPY - 2,500,000 JPY	5,849	16.52 %	9,399,698,315 JPY	14.39 %
2,500,001 JPY - 3,000,000 JPY	5,576	15.75 %	10,884,002,604 JPY	16.66 %
3,000,001 JPY - 3,500,000 JPY	3,567	10.07 %	8,274,050,020 JPY	12.67 %
3,500,001 JPY - 4,000,000 JPY	2,428	6.86 %	6,505,416,138 JPY	9.96 %
4,000,001 JPY - 4,500,000 JPY	1,362	3.85 %	4,177,881,528 JPY	6.40 %
4,500,001 JPY - 5,000,000 JPY	1,057	2.99 %	3,548,091,064 JPY	5.43 %
5,000,001 JPY - 6,000,000 JPY	1,021	2.88 %	4,021,884,383 JPY	6.16 %
6,000,001 JPY - 7,000,000 JPY	525	1.48 %	2,350,993,705 JPY	3.60 %
7,000,001 JPY - 8,000,000 JPY	259	0.73 %	1,376,807,828 JPY	2.11 %
8,000,001 JPY - 9,000,000 JPY	121	0.34 %	699,600,516 JPY	1.07 %
9,000,001 JPY - 10,000,000 JPY	84	0.24 %	545,483,394 JPY	0.84 %
>= 10,000,001 JPY	110	0.31 %	732,576,480 JPY	1.12 %
Total	35,408	100.00 %	65,323,842,856 JPY	100.00 %

Statistics

Minimum Original Principal Balance	100,000 JPY
Maximum Original Principal Balance	25,500,000 JPY
Average Original Principal Balance	2,647,958 JPY

Distribution by Interest Rate paid by the Obligor

Interest Rate paid by the Obligor	Number of Loans	Percentage of Loans	Outstanding Discounted Principal Balance	Percentage of Balance
< 0.900 %	4,594	12.97 %	9,866,574,681 JPY	15.10 %
0.900 % < 1.500 %	6,783	19.16 %	14,286,029,419 JPY	21.87 %
1.500 % < 2.000 %	7,943	22.43 %	16,042,387,985 JPY	24.56 %
2.000 % < 2.500 %	529	1.49 %	741,856,067 JPY	1.14 %
2.500 % < 3.000 %	7,800	22.03 %	13,793,210,746 JPY	21.12 %
3.000 % < 3.500 %	1,215	3.43 %	1,165,536,607 JPY	1.78 %
3.500 % < 4.000 %	6,419	18.13 %	9,232,974,730 JPY	14.13 %
4.000 % < 4.500 %	120	0.34 %	193,288,100 JPY	0.30 %
4.500 % < 5.000 %	5	0.01 %	1,984,521 JPY	0.00 %
5.000 % or more	0	0.00 %	0 JPY	0.00 %
Total	35,408	100.00 %	65,323,842,856 JPY	100.00 %

Statistics	
Minimum Interest Rate	0.00 %
Maximum Interest Rate	4.79 %
Weighted Average Interest Rate	1.96 %

Distribution by Original Term

Length of Original Term (months)	Number of Loans	Percentage of Loans	Outstanding Discounted Principal Balance	Percentage of Balance
6 - 12	113	0.32 %	32,515,623 JPY	0.05 %
13 - 18	89	0.25 %	27,382,675 JPY	0.04 %
19 - 24	1,349	3.81 %	772,612,942 JPY	1.18 %
25 - 30	142	0.40 %	81,553,881 JPY	0.12 %
31 - 36	18,205	51.41 %	35,989,858,665 JPY	55.09 %
37 - 42	77	0.22 %	72,031,337 JPY	0.11 %
43 - 48	1,535	4.34 %	1,995,937,574 JPY	3.06 %
49 - 54	35	0.10 %	38,480,225 JPY	0.06 %
55 - 60	12,683	35.82 %	23,853,501,321 JPY	36.52 %
61 - 66	23	0.06 %	43,517,772 JPY	0.07 %
67 - 72	911	2.57 %	1,775,991,824 JPY	2.72 %
73 - 84	246	0.69 %	640,459,017 JPY	0.98 %
Total	35,408	100.00 %	65,323,842,856 JPY	100.00 %

Statistics	
Minimum Original Term in months	6
Maximum Original Term in months	84
Weighted Average Original Term in months	46.45

Distribution by Remaining Term

Length of Remaining Term (months)	Number of Loans	Percentage of Loans	Outstanding Discounted Principal Balance	Percentage of Balance
<= 12	5,470	15.45 %	5,899,146,879 JPY	9.03 %
13 - 18	5,057	14.28 %	8,519,124,595 JPY	13.04 %
19 - 24	7,978	22.53 %	15,272,963,966 JPY	23.38 %
25 - 30	5,675	16.03 %	12,010,257,673 JPY	18.39 %
31 - 36	3,106	8.77 %	5,558,297,627 JPY	8.51 %
37 - 42	2,382	6.73 %	4,590,367,370 JPY	7.03 %
43 - 48	2,481	7.01 %	5,302,316,690 JPY	8.12 %
49 - 54	2,289	6.46 %	5,649,626,513 JPY	8.65 %
55 - 60	683	1.93 %	1,714,511,883 JPY	2.62 %
61 - 66	169	0.48 %	446,866,883 JPY	0.68 %
67 - 72	65	0.18 %	195,705,971 JPY	0.30 %
73 - 84	53	0.15 %	164,656,806 JPY	0.25 %
Total	35,408	100.00 %	65,323,842,856 JPY	100.00 %

Statistics	
Minimum Remaining Term in months	1
Maximum Remaining Term in months	79
Weighted Average Remaining Term in months	28.74

Distribution by Seasoning

Seasoning (months)	Number of Loans	Percentage of Loans	Outstanding Discounted Principal Balance	Percentage of Balance
<= 12	9,515	26.87 %	20,965,143,787 JPY	32.09 %
13 - 18	10,246	28.94 %	19,837,688,221 JPY	30.37 %
19 - 24	6,031	17.03 %	11,123,066,153 JPY	17.03 %
25 - 30	4,690	13.25 %	7,480,503,116 JPY	11.45 %
31 - 36	2,463	6.96 %	3,424,974,593 JPY	5.24 %
37 - 42	1,053	2.97 %	1,302,394,976 JPY	1.99 %
43 - 48	528	1.49 %	569,003,226 JPY	0.87 %
49 - 54	406	1.15 %	353,607,185 JPY	0.54 %
55 - 60	454	1.28 %	261,686,264 JPY	0.40 %
61 - 66	11	0.03 %	4,235,788 JPY	0.01 %
67 - 72	10	0.03 %	1,289,624 JPY	0.00 %
73 - 84	1	0.00 %	249,923 JPY	0.00 %
Total	35,408	100.00 %	65,323,842,856 JPY	100.00 %

Statistics	
Minimum Seasoning in months	2
Maximum Seasoning in months	79
Weighted Average Seasoning in months	17.71

Distribution by Type of Car

Type of Car

Type of Car	Number of Loans	Percentage of Loans	Outstanding Discounted Principal Balance	Percentage of Balance
New	25,448	71.87 %	52,088,346,579 JPY	79.74 %
Used	9,960	28.13 %	13,235,496,277 JPY	20.26 %
Total	35,408	100.00 %	65,323,842,856 JPY	100.00 %

Type of Car: Only Balloon Loans

Type of Car	Number of Loans	Percentage of Loans	Outstanding Discounted Principal Balance	Percentage of Balance
New	22,693	84.31 %	48,457,941,858 JPY	87.18 %
Used	4,222	15.69 %	7,126,763,687 JPY	12.82 %
Total	26,915	100.00 %	55,584,705,545 JPY	100.00 %

Type of Car: Only Equal Instalment Loans

Type of Car	Number of Loans	Percentage of Loans	Outstanding Discounted Principal Balance	Percentage of Balance
New	2,755	32.44 %	3,630,404,721 JPY	37.28 %
Used	5,738	67.56 %	6,108,732,590 JPY	62.72 %
Total	8,493	100.00 %	9,739,137,311 JPY	100.00 %

Distribution by Brand and Model

Make	Model	Number of Loans	Percentage of Loans	Outstanding Discounted Principal Balance	Percentage of Balance
Audi	A1	1,254	3.54 %	1,812,127,790 JPY	2.77 %
	A3	3,029	8.55 %	5,822,186,887 JPY	8.91 %
	A4	2,617	7.39 %	5,742,993,240 JPY	8.79 %
	A5	744	2.10 %	1,974,395,152 JPY	3.02 %
	A6	1,126	3.18 %	3,319,792,531 JPY	5.08 %
	A7	295	0.83 %	1,213,515,793 JPY	1.86 %
	A8	135	0.38 %	618,146,509 JPY	0.95 %
	S1	120	0.34 %	298,290,586 JPY	0.46 %
	S3	475	1.34 %	1,417,278,155 JPY	2.17 %
	S4	115	0.32 %	382,896,389 JPY	0.59 %
	S5	74	0.21 %	280,741,911 JPY	0.43 %
	S6	32	0.09 %	141,015,683 JPY	0.22 %
	S7	33	0.09 %	180,741,070 JPY	0.28 %
	S8	27	0.08 %	144,926,278 JPY	0.22 %
	RS3	5	0.01 %	31,140,259 JPY	0.05 %
	RS4	20	0.06 %	88,149,507 JPY	0.13 %
	RS5	18	0.05 %	97,090,665 JPY	0.15 %
	RS6	18	0.05 %	88,775,294 JPY	0.14 %
	RS7	8	0.02 %	51,343,622 JPY	0.08 %
	Q3	1,065	3.01 %	2,719,998,421 JPY	4.16 %
	Q5	765	2.16 %	2,466,111,446 JPY	3.78 %
	Q7	63	0.18 %	189,038,438 JPY	0.29 %
	TT	690	1.95 %	1,666,859,332 JPY	2.55 %
R8	13	0.04 %	81,123,841 JPY	0.12 %	
AUDI OTHERS	0	0.00 %	0 JPY	0.00 %	
	Subtotal	12,741	35.98 %	30,828,678,799 JPY	47.19 %
Bentley	ARNAGE	1	0.00 %	1,350,711 JPY	0.00 %
	AZURE	0	0.00 %	0 JPY	0.00 %
	CONTINENTAL	16	0.05 %	87,927,580 JPY	0.13 %
	MULSANNE	0	0.00 %	0 JPY	0.00 %
	FLYING SPUR	1	0.00 %	9,462,586 JPY	0.01 %
	BENTLEY	0	0.00 %	0 JPY	0.00 %
		Subtotal	18	0.05 %	98,740,877 JPY
Lamborghini	AVENTADOR	0	0.00 %	0 JPY	0.00 %
	DIABLO	0	0.00 %	0 JPY	0.00 %
	GALLARDO	5	0.01 %	26,418,384 JPY	0.04 %
	MULCIELAGO	0	0.00 %	0 JPY	0.00 %
	LAMBORGHINI	0	0.00 %	0 JPY	0.00 %
	OTHERS	0	0.00 %	0 JPY	0.00 %
	Subtotal	5	0.01 %	26,418,384 JPY	0.04 %
VW	BEETLE	2,601	7.35 %	4,164,546,662 JPY	6.38 %
	BORA	0	0.00 %	0 JPY	0.00 %
	EOS	9	0.03 %	4,716,635 JPY	0.01 %
	GOLF	8,975	25.35 %	14,623,778,509 JPY	22.39 %
	JETTA	28	0.08 %	15,281,939 JPY	0.02 %
	LUPO	0	0.00 %	0 JPY	0.00 %
	PASSAT	1,521	4.30 %	2,970,200,611 JPY	4.55 %
	POLO	4,600	12.99 %	5,656,501,323 JPY	8.66 %
	SCIROCCO	82	0.23 %	100,600,250 JPY	0.15 %
	SHARAN	784	2.21 %	1,561,450,040 JPY	2.39 %
	TIGUAN	743	2.10 %	1,280,377,795 JPY	1.96 %
	TOUAREG	138	0.39 %	346,245,268 JPY	0.53 %
	TOURAN	1,019	2.88 %	1,569,278,040 JPY	2.40 %
	UP	2,115	5.97 %	2,045,640,321 JPY	3.13 %
	VENTO	0	0.00 %	0 JPY	0.00 %
	VW OTHERS	1	0.00 %	1,069,548 JPY	0.00 %
		Subtotal	22,616	63.87 %	34,339,686,941 JPY
Non VW Group Vehicles		28	0.08 %	30,317,855 JPY	0.05 %
	Subtotal	28	0.08 %	30,317,855 JPY	0.05 %
	Total	35,408	100.00 %	65,323,842,856 JPY	100.00 %

Geographic Distribution by Prefecture

Prefecture	Number of Loans	Percentage of Loans	Outstanding Discounted Principal Balance	Percentage of Balance
Tokyo	5,406	15.27 %	11,318,866,981 JPY	17.33 %
Kanagawa	3,534	9.98 %	6,695,140,679 JPY	10.25 %
Aichi	2,565	7.24 %	4,559,189,896 JPY	6.98 %
Osaka	2,163	6.11 %	4,225,695,909 JPY	6.47 %
Saitama	2,213	6.25 %	4,009,297,274 JPY	6.14 %
Hyogo	1,572	4.44 %	2,889,769,768 JPY	4.42 %
Hokkaido	1,385	3.91 %	2,865,051,518 JPY	4.39 %
Fukuoka	1,397	3.95 %	2,670,865,376 JPY	4.09 %
Chiba	1,443	4.08 %	2,567,241,835 JPY	3.93 %
Shizuoka	1,051	2.97 %	1,816,025,232 JPY	2.78 %
Ibaraki	1,068	3.02 %	1,765,910,363 JPY	2.70 %
Hiroshima	813	2.30 %	1,378,094,910 JPY	2.11 %
Kyoto	675	1.91 %	1,279,180,771 JPY	1.96 %
Tochigi	681	1.92 %	1,198,768,396 JPY	1.84 %
Okayama	627	1.77 %	1,142,606,058 JPY	1.75 %
Gunma	711	2.01 %	1,116,078,724 JPY	1.71 %
Miyagi	638	1.80 %	1,033,565,020 JPY	1.58 %
Mie	510	1.44 %	884,975,086 JPY	1.35 %
Gifu	524	1.48 %	864,752,599 JPY	1.32 %
Nagano	514	1.45 %	838,978,239 JPY	1.28 %
Niigata	393	1.11 %	636,805,326 JPY	0.97 %
Fukushima	364	1.03 %	627,947,335 JPY	0.96 %
Nara	329	0.93 %	616,166,777 JPY	0.94 %
Yamaguchi	341	0.96 %	584,624,611 JPY	0.89 %
Shiga	294	0.83 %	525,251,598 JPY	0.80 %
Kagawa	267	0.75 %	502,478,020 JPY	0.77 %
Oita	271	0.77 %	487,716,865 JPY	0.75 %
Fukui	252	0.71 %	462,016,253 JPY	0.71 %
Ishikawa	266	0.75 %	449,871,730 JPY	0.69 %
Kumamoto	257	0.73 %	431,027,718 JPY	0.66 %
Kagoshima	241	0.68 %	425,415,748 JPY	0.65 %
Yamanashi	252	0.71 %	420,863,155 JPY	0.64 %
Yamagata	257	0.73 %	413,353,054 JPY	0.63 %
Toyama	259	0.73 %	411,618,362 JPY	0.63 %
Wakayama	211	0.60 %	381,267,776 JPY	0.58 %
Tokushima	176	0.50 %	302,915,357 JPY	0.46 %
Miyazaki	165	0.47 %	288,031,200 JPY	0.44 %
Nagasaki	159	0.45 %	286,816,204 JPY	0.44 %
Iwate	158	0.45 %	273,191,566 JPY	0.42 %
Aomori	158	0.45 %	269,007,384 JPY	0.41 %
Ehime	184	0.52 %	257,199,105 JPY	0.39 %
Akita	138	0.39 %	246,727,916 JPY	0.38 %
Tottori	136	0.38 %	238,554,322 JPY	0.37 %
Shimane	138	0.39 %	235,834,002 JPY	0.36 %
Saga	121	0.34 %	210,154,087 JPY	0.32 %
Okinawa	69	0.19 %	123,054,318 JPY	0.19 %
Kouchi	62	0.18 %	95,878,433 JPY	0.15 %
Total	35,408	100.00 %	65,323,842,856 JPY	100.00 %

Distribution by Obligor Concentration

Distribution of Loan Contracts and Vehicles per Obligor

Contract Concentration	Number of Customers	Percentage of Customers	Number of Loans	Percentage of Loans	Outstanding Discounted Principal Balance	Percentage of Balance
1	34,268	97.28 %	34,268	96.78 %	62,791,627,786 JPY	96.12 %
2	859	2.44 %	1,020	2.88 %	2,221,688,361 JPY	3.40 %
3	81	0.23 %	96	0.27 %	249,458,583 JPY	0.38 %
4	12	0.03 %	14	0.04 %	36,918,620 JPY	0.06 %
5	3	0.01 %	6	0.02 %	15,407,545 JPY	0.02 %
6 - 10	2	0.01 %	4	0.01 %	8,741,961 JPY	0.01 %
11 or more	0	0.00 %	0	0.00 %	0 JPY	0.00 %
Total	35,225	100.00 %	35,408	100.00 %	65,323,842,856 JPY	100.00 %

Top 20 Obligor

Number	Number of Contracts	Outstanding Discounted Principal Balance	Percentage of Balance
1	2	13,783,392 JPY	0.02 %
2	3	13,709,586 JPY	0.02 %
3	2	11,684,783 JPY	0.02 %
4	2	11,378,184 JPY	0.02 %
5	2	11,364,935 JPY	0.02 %
6	2	10,677,195 JPY	0.02 %
7	2	10,097,943 JPY	0.02 %
8	2	10,064,867 JPY	0.02 %
9	2	10,015,793 JPY	0.02 %
10	2	9,907,889 JPY	0.02 %
11	3	9,835,444 JPY	0.02 %
12	2	9,714,328 JPY	0.01 %
13	1	9,681,132 JPY	0.01 %
14	2	9,596,921 JPY	0.01 %
15	1	9,462,586 JPY	0.01 %
16	1	9,388,455 JPY	0.01 %
17	1	9,200,598 JPY	0.01 %
18	1	9,199,410 JPY	0.01 %
19	1	9,162,378 JPY	0.01 %
20	2	9,121,588 JPY	0.01 %
Total 1 -20	36	207,047,407 JPY	0.32 %

Remarks:

Figures above are calculated based on each of the Sub-Servicers respectively and not across both of the Sub-Servicers.

Distribution by Contract Start Month

Origination Month	Number of Loans	Percentage of Loans	Outstanding Discounted Principal Balance	Percentage of Balance
12.2009	1	0.00 %	249,923 JPY	0.00 %
01.2010	0	0.00 %	0 JPY	0.00 %
02.2010	0	0.00 %	0 JPY	0.00 %
03.2010	0	0.00 %	0 JPY	0.00 %
04.2010	0	0.00 %	0 JPY	0.00 %
05.2010	0	0.00 %	0 JPY	0.00 %
06.2010	0	0.00 %	0 JPY	0.00 %
07.2010	0	0.00 %	0 JPY	0.00 %
08.2010	0	0.00 %	0 JPY	0.00 %
09.2010	3	0.01 %	169,253 JPY	0.00 %
10.2010	5	0.01 %	659,906 JPY	0.00 %
11.2010	0	0.00 %	0 JPY	0.00 %
12.2010	2	0.01 %	460,465 JPY	0.00 %
01.2011	2	0.01 %	1,028,352 JPY	0.00 %
02.2011	1	0.00 %	252,662 JPY	0.00 %
03.2011	5	0.01 %	1,597,313 JPY	0.00 %
04.2011	0	0.00 %	0 JPY	0.00 %
05.2011	1	0.00 %	266,446 JPY	0.00 %
06.2011	2	0.01 %	1,091,015 JPY	0.00 %
07.2011	3	0.01 %	3,074,133 JPY	0.00 %
08.2011	48	0.14 %	29,249,195 JPY	0.04 %
09.2011	117	0.33 %	63,912,192 JPY	0.10 %
10.2011	76	0.21 %	36,507,398 JPY	0.06 %
11.2011	99	0.28 %	55,937,546 JPY	0.09 %
12.2011	111	0.31 %	73,005,800 JPY	0.11 %
01.2012	42	0.12 %	30,250,496 JPY	0.05 %
02.2012	71	0.20 %	56,163,957 JPY	0.09 %
03.2012	104	0.29 %	91,765,339 JPY	0.14 %
04.2012	43	0.12 %	37,841,568 JPY	0.06 %
05.2012	62	0.18 %	61,051,300 JPY	0.09 %
06.2012	84	0.24 %	76,534,525 JPY	0.12 %
07.2012	58	0.16 %	62,842,045 JPY	0.10 %
08.2012	55	0.16 %	60,886,423 JPY	0.09 %
09.2012	94	0.27 %	91,708,765 JPY	0.14 %
10.2012	82	0.23 %	81,065,800 JPY	0.12 %
11.2012	95	0.27 %	114,943,795 JPY	0.18 %
12.2012	144	0.41 %	157,556,398 JPY	0.24 %
01.2013	109	0.31 %	119,655,867 JPY	0.18 %
02.2013	130	0.37 %	153,662,524 JPY	0.24 %
03.2013	203	0.57 %	250,691,932 JPY	0.38 %
04.2013	144	0.41 %	175,023,573 JPY	0.27 %
05.2013	188	0.53 %	232,529,504 JPY	0.36 %
06.2013	279	0.79 %	370,831,576 JPY	0.57 %
07.2013	209	0.59 %	285,164,848 JPY	0.44 %
08.2013	323	0.91 %	407,802,292 JPY	0.62 %
09.2013	451	1.27 %	574,352,067 JPY	0.88 %
10.2013	331	0.93 %	451,348,388 JPY	0.69 %
11.2013	446	1.26 %	628,668,919 JPY	0.96 %
12.2013	703	1.99 %	1,077,638,079 JPY	1.65 %
01.2014	609	1.72 %	845,037,184 JPY	1.29 %
02.2014	791	2.23 %	1,202,006,689 JPY	1.84 %
03.2014	1,321	3.73 %	2,083,390,294 JPY	3.19 %
04.2014	434	1.23 %	734,527,482 JPY	1.12 %
05.2014	651	1.84 %	1,102,520,194 JPY	1.69 %
06.2014	884	2.50 %	1,513,021,273 JPY	2.32 %
07.2014	723	2.04 %	1,259,091,936 JPY	1.93 %
08.2014	729	2.06 %	1,291,791,397 JPY	1.98 %
09.2014	1,239	3.50 %	2,266,118,525 JPY	3.47 %
10.2014	827	2.34 %	1,491,741,055 JPY	2.28 %
11.2014	1,011	2.86 %	1,876,826,196 JPY	2.87 %
12.2014	1,502	4.24 %	2,937,497,044 JPY	4.50 %
01.2015	1,275	3.60 %	2,356,521,899 JPY	3.61 %
02.2015	1,757	4.96 %	3,162,759,395 JPY	4.84 %
03.2015	2,950	8.33 %	5,566,796,241 JPY	8.52 %
04.2015	963	2.72 %	1,947,560,242 JPY	2.98 %
05.2015	1,425	4.02 %	2,919,752,405 JPY	4.47 %
06.2015	1,876	5.30 %	3,884,298,039 JPY	5.95 %
07.2015	1,386	3.91 %	2,776,714,606 JPY	4.25 %
08.2015	1,521	4.30 %	3,148,541,406 JPY	4.82 %
09.2015	2,214	6.25 %	4,962,188,089 JPY	7.60 %
10.2015	1,221	3.45 %	2,709,170,231 JPY	4.15 %
11.2015	1,445	4.08 %	3,323,831,585 JPY	5.09 %
12.2015	411	1.16 %	991,431,971 JPY	1.52 %
01.2016	345	0.97 %	784,292,803 JPY	1.20 %
02.2016	324	0.92 %	752,984,993 JPY	1.15 %
03.2016	418	1.18 %	957,263,792 JPY	1.47 %
04.2016	147	0.42 %	361,159,686 JPY	0.55 %
05.2016	83	0.23 %	197,564,625 JPY	0.30 %
06.2016	0	0.00 %	0 JPY	0.00 %
07.2016	0	0.00 %	0 JPY	0.00 %
Total	35,408	100.00 %	65,323,842,856 JPY	100.00 %

Distribution by Contract End Month

Maturity Month	Number of Loans	Percentage of Loans	Outstanding Discounted Principal Balance	Percentage of Balance
08.2016	232	0.66 %	146,015,517 JPY	0.22 %
09.2016	405	1.14 %	266,642,237 JPY	0.41 %
10.2016	284	0.80 %	185,268,792 JPY	0.28 %
11.2016	395	1.12 %	333,422,016 JPY	0.51 %
12.2016	459	1.30 %	436,930,729 JPY	0.67 %
01.2017	364	1.03 %	322,156,019 JPY	0.49 %
02.2017	519	1.47 %	506,461,739 JPY	0.78 %
03.2017	814	2.30 %	882,691,722 JPY	1.35 %
04.2017	283	0.80 %	370,309,679 JPY	0.57 %
05.2017	496	1.40 %	687,017,730 JPY	1.05 %
06.2017	672	1.90 %	969,669,999 JPY	1.48 %
07.2017	547	1.54 %	792,560,700 JPY	1.21 %
08.2017	521	1.47 %	795,314,885 JPY	1.22 %
09.2017	948	2.68 %	1,556,458,538 JPY	2.38 %
10.2017	640	1.81 %	1,011,239,198 JPY	1.55 %
11.2017	810	2.29 %	1,351,196,630 JPY	2.07 %
12.2017	1,208	3.41 %	2,207,703,055 JPY	3.38 %
01.2018	930	2.63 %	1,597,212,289 JPY	2.45 %
02.2018	1,267	3.58 %	2,281,307,413 JPY	3.49 %
03.2018	2,379	6.72 %	4,417,812,457 JPY	6.76 %
04.2018	724	2.04 %	1,400,577,343 JPY	2.14 %
05.2018	1,050	2.97 %	2,106,014,649 JPY	3.22 %
06.2018	1,515	4.28 %	3,037,824,066 JPY	4.65 %
07.2018	1,043	2.95 %	2,029,428,038 JPY	3.11 %
08.2018	1,107	3.13 %	2,243,020,785 JPY	3.43 %
09.2018	1,611	4.55 %	3,520,240,916 JPY	5.39 %
10.2018	838	2.37 %	1,831,131,341 JPY	2.80 %
11.2018	985	2.78 %	2,222,520,098 JPY	3.40 %
12.2018	616	1.74 %	1,274,441,646 JPY	1.95 %
01.2019	518	1.46 %	918,902,887 JPY	1.41 %
02.2019	646	1.82 %	1,177,462,641 JPY	1.80 %
03.2019	934	2.64 %	1,733,694,874 JPY	2.65 %
04.2019	335	0.95 %	627,373,370 JPY	0.96 %
05.2019	367	1.04 %	626,697,639 JPY	0.96 %
06.2019	463	1.31 %	767,781,967 JPY	1.18 %
07.2019	361	1.02 %	625,287,136 JPY	0.96 %
08.2019	353	1.00 %	639,953,566 JPY	0.98 %
09.2019	514	1.45 %	953,048,542 JPY	1.46 %
10.2019	360	1.02 %	658,737,297 JPY	1.01 %
11.2019	369	1.04 %	709,511,943 JPY	1.09 %
12.2019	426	1.20 %	865,539,907 JPY	1.32 %
01.2020	360	1.02 %	763,576,115 JPY	1.17 %
02.2020	445	1.26 %	887,465,513 JPY	1.36 %
03.2020	581	1.64 %	1,225,452,665 JPY	1.88 %
04.2020	290	0.82 %	612,712,731 JPY	0.94 %
05.2020	392	1.11 %	856,940,969 JPY	1.31 %
06.2020	389	1.10 %	881,216,658 JPY	1.35 %
07.2020	384	1.08 %	838,528,154 JPY	1.28 %
08.2020	430	1.21 %	1,016,399,442 JPY	1.56 %
09.2020	625	1.77 %	1,526,299,705 JPY	2.34 %
10.2020	392	1.11 %	985,589,535 JPY	1.51 %
11.2020	492	1.39 %	1,229,171,558 JPY	1.88 %
12.2020	157	0.44 %	401,460,046 JPY	0.61 %
01.2021	193	0.55 %	490,706,227 JPY	0.75 %
02.2021	172	0.49 %	434,331,085 JPY	0.66 %
03.2021	242	0.68 %	634,584,878 JPY	0.97 %
04.2021	85	0.24 %	216,485,610 JPY	0.33 %
05.2021	93	0.26 %	223,381,043 JPY	0.34 %
06.2021	60	0.17 %	131,582,723 JPY	0.20 %
07.2021	31	0.09 %	74,146,544 JPY	0.11 %
08.2021	27	0.08 %	74,738,960 JPY	0.11 %
09.2021	42	0.12 %	103,641,965 JPY	0.16 %
10.2021	30	0.08 %	76,114,421 JPY	0.12 %
11.2021	38	0.11 %	104,790,797 JPY	0.16 %
12.2021	16	0.05 %	48,976,103 JPY	0.07 %
01.2022	16	0.05 %	38,604,637 JPY	0.06 %
02.2022	14	0.04 %	38,273,874 JPY	0.06 %
03.2022	15	0.04 %	43,247,468 JPY	0.07 %
04.2022	9	0.03 %	22,768,444 JPY	0.03 %
05.2022	4	0.01 %	12,153,487 JPY	0.02 %
06.2022	13	0.04 %	49,260,288 JPY	0.08 %
07.2022	10	0.03 %	30,002,410 JPY	0.05 %
08.2022	6	0.02 %	22,240,225 JPY	0.03 %
09.2022	19	0.05 %	47,666,284 JPY	0.07 %
10.2022	9	0.03 %	28,967,413 JPY	0.04 %
11.2022	13	0.04 %	48,126,744 JPY	0.07 %
12.2022	4	0.01 %	11,745,598 JPY	0.02 %
01.2023	1	0.00 %	4,062,256 JPY	0.01 %
02.2023	1	0.00 %	1,848,286 JPY	0.00 %
Total	35,408	100.00 %	65,323,842,856 JPY	100.00 %

Distribution by Monthly Payment

Monthly Payment	Number of Loans	Percentage of Loans	Outstanding Discounted Principal Balance	Percentage of Balance
<= 10,000 JPY	2,015	5.69 %	2,306,317,987 JPY	3.53 %
10,001 JPY - 20,000 JPY	6,485	18.32 %	8,216,068,292 JPY	12.58 %
20,001 JPY - 30,000 JPY	9,101	25.70 %	13,656,171,469 JPY	20.91 %
30,001 JPY - 40,000 JPY	6,846	19.33 %	12,270,441,885 JPY	18.78 %
40,001 JPY - 50,000 JPY	4,091	11.55 %	8,552,348,915 JPY	13.09 %
50,001 JPY - 60,000 JPY	2,544	7.18 %	6,119,390,337 JPY	9.37 %
60,001 JPY - 70,000 JPY	1,385	3.91 %	3,799,847,997 JPY	5.82 %
70,001 JPY - 80,000 JPY	807	2.28 %	2,403,064,162 JPY	3.68 %
80,001 JPY - 90,000 JPY	568	1.60 %	1,716,290,723 JPY	2.63 %
90,001 JPY - 100,000 JPY	470	1.33 %	1,605,225,259 JPY	2.46 %
100,001 JPY - 110,000 JPY	284	0.80 %	1,009,137,101 JPY	1.54 %
110,001 JPY - 120,000 JPY	198	0.56 %	796,634,098 JPY	1.22 %
120,001 JPY - 130,000 JPY	142	0.40 %	607,366,583 JPY	0.93 %
130,001 JPY - 140,000 JPY	105	0.30 %	472,710,046 JPY	0.72 %
140,001 JPY - 150,000 JPY	79	0.22 %	332,081,093 JPY	0.51 %
>= 150,001 JPY	288	0.81 %	1,460,746,909 JPY	2.24 %
Total	35,408	100.00 %	65,323,842,856 JPY	100.00 %

Distribution by Bonus Payment

Bonus Payment	Number of Loans	Percentage of Loans	Outstanding Discounted Principal Balance	Percentage of Balance
No Bonus Payment	21,628	61.08 %	39,669,985,898 JPY	60.73 %
1 JPY - 25,000 JPY	263	0.74 %	354,174,656 JPY	0.54 %
25,001 JPY - 50,000 JPY	3,340	9.43 %	4,937,502,068 JPY	7.56 %
50,001 JPY - 75,000 JPY	1,168	3.30 %	1,873,977,183 JPY	2.87 %
75,001 JPY - 100,000 JPY	4,805	13.57 %	8,662,292,405 JPY	13.26 %
100,001 JPY - 125,000 JPY	615	1.74 %	1,188,916,146 JPY	1.82 %
125,001 JPY - 150,000 JPY	1,900	5.37 %	4,138,106,831 JPY	6.33 %
150,001 JPY - 175,000 JPY	216	0.61 %	490,727,357 JPY	0.75 %
175,001 JPY - 200,000 JPY	932	2.63 %	2,403,446,825 JPY	3.68 %
200,001 JPY - 225,000 JPY	72	0.20 %	182,283,436 JPY	0.28 %
225,001 JPY - 250,000 JPY	221	0.62 %	639,366,843 JPY	0.98 %
250,001 JPY - 275,000 JPY	17	0.05 %	46,243,620 JPY	0.07 %
275,001 JPY - 300,000 JPY	144	0.41 %	420,639,845 JPY	0.64 %
300,001 JPY - 325,000 JPY	9	0.03 %	30,652,313 JPY	0.05 %
325,001 JPY - 350,000 JPY	26	0.07 %	97,953,866 JPY	0.15 %
350,001 JPY - 375,000 JPY	5	0.01 %	15,462,768 JPY	0.02 %
375,001 JPY - 400,000 JPY	23	0.06 %	85,244,500 JPY	0.13 %
400,001 JPY - 425,000 JPY	1	0.00 %	4,990,583 JPY	0.01 %
425,001 JPY - 450,000 JPY	1	0.00 %	3,263,205 JPY	0.00 %
450,001 JPY - 475,000 JPY	1	0.00 %	4,260,514 JPY	0.01 %
475,001 JPY - 500,000 JPY	14	0.04 %	48,024,377 JPY	0.07 %
500,001 JPY or more	7	0.02 %	26,327,617 JPY	0.04 %
Total	35,408	100.00 %	65,323,842,856 JPY	100.00 %

Distribution by Motor Type

Motor Type	Number of Loans	Percentage of Loans	Outstanding Discounted Principal Balance	Percentage of Balance
EA 189	0	0.00 %	0 JPY	0.00 %
Other	35,408	100.00 %	65,323,842,856 JPY	100.00 %
Total	35,408	100.00 %	65,323,842,856 JPY	100.00 %

Disclaimer

This presentation contains forward-looking statements and information on the business development of the Volkswagen Group. These statements may be spoken or written and can be recognized by terms such as "expects", "anticipates", "intends", "plans", "believes", "seeks", "estimates", "will", or words with similar meaning. These statements are based on assumptions relating to the development of the economies of individual countries, and in particular of the automotive industry, which we have made on the basis of the information available to us and which we consider to be realistic at the time of going to press. The estimates given involve a degree of risk, and the actual developments may differ from those forecast.

Consequently, any unexpected fall in demand or economic stagnation in our key sales markets, such as in Western Europe (and especially Germany) or in the USA, Brazil or China, will have a corresponding impact on the development of our business. The same applies in the event of a significant shift in current exchange rates relative to the US dollar, sterling, yen, Brazilian real, Chinese renminbi and Czech koruna.

If any of these or other risks occur, or if the assumptions underlying any of these statements prove incorrect, the actual results may significantly differ from those expressed or implied by such statements.

We do not update forward-looking statements retrospectively. Such statements are valid on the date of publication and can be superceded.

This information does not constitute an offer to exchange or sell or an offer to exchange or buy any securities.