

Deal Name: Driver Japan five

Originator: Volkswagen Financial Services Japan Ltd.
Gotenyama Trust Tower 17F
7-35 Kitashinagawa 4-chome, Shinagawa-ku
Tokyo 140-0001, Japan

Reporting Entity: Volkswagen Financial Services Japan Ltd.
Treasury Dept.
Gotenyama Trust Tower 17F
7-35 Kitashinagawa 4-chome, Shinagawa-ku
Tokyo 140-0001, Japan
Tel No.: +81(0)3-5792-7261
Fax No.: +81(0)3-3280-7365
E-mail: vwfsjp.abs@vwfs.com

**Trustor of the First Trust:
Servicer:** Volkswagen Financial Services Japan Ltd.

**Trustee of the First Trust:
Trustee of the Second Trust:** Shinsei Trust & Banking Co., Ltd.
Nihonbashi Muromachi Nomura Building
4-3, Nihonbashi-muromachi 2-chome, Chuo-ku,
Tokyo 103-0022, Japan
Trust Management Division
Tel No.: +81(0)3-6880-6300
Fax No.: +81(0)3-4560-2756
E-mail: OpsKinsai@shinseitrust.com



Contents

Page	Tables of Contents
1	Front Page
2	Contents
3	Deal Overview
4	Deal Overview: Counterparties I
5	Deal Overview: Counterparties II
6	Information regarding the TBI and ABL to the Second Trust
7	Pool Information
8	Available Distribution
9	Waterfall
10	Credit Enhancement
11	Cumulative Gross Loss Ratio & Performance Trigger
12	Cumulative Gross Loss Ratio & Performance Trigger (Chart)
13	Default & Delinquencies
14	Run Out Schedule (Previous)
15	Run Out Schedule
16	Expected Amortization to the Second Trust
17	Sub-Servicer
18	Brand
19	New and Used
20	Product Type
21	RV
22	Brand New and Used
23	Customer Type
24	Outstanding Discounted Principal Balance
25	Original Principal Amount
26	Interest Rate paid by the Obligor
27	Original Term
28	Remaining Term
29	Seasoning
30	Type of Car
31	Brand and Model
32	Geographic Dist. by Prefecture
33	Obligor Concentration
34	Contract Start Month
35	Contract End Month
36	Monthly payment
37	Bonus payment
38	Mortor Type

Deal Overview

Cut Off Date:	2016/02/10		
Trust Commencement Date:	2016/02/24	Legal Maturity of the First Trust:	2024/06/27
Monthly Period:	2016/06/11	to	2016/07/10
Reporting Date:	2016/07/15		
Reporting Frequency:	monthly		
Period No.:	5		
Remittance Date:	2016/07/22		
Advance Payment Date:	2016/07/22		
Cash Adjustment Date:	2016/07/22		
Additional Entrustment Date:	2016/07/26		
Trust Calculation Date:	2016/07/26		
Trust Calculation Period:	2016/06/25	to	2016/07/26
First Trust Payment Date:	2016/07/27		
Second Trust Payment Date:	2016/07/28		
Interest Calculation Period:	2016/06/29	to	2016/07/28
Next Reporting Date:	2016/08/18		

Pool information at the Initial Cut off Date

	Number of Contracts	Outstanding Discounted Principal Balance	Outstanding Nominal Balance
Outstanding Pool	31,976	64,176,234,995 JPY	66,824,671,200 JPY

Credit Type	Percentage of Loans	Outstanding Discounted Principal Balance	Percentage of Balance
Balloon	75.37 %	53,826,542,156 JPY	83.87 %
Equal Instalment Loan	24.63 %	10,349,692,839 JPY	16.13 %
Total	100.00 %	64,176,234,995 JPY	100.00 %

Type of Car	Percentage of Loans	Outstanding Discounted Principal Balance	Percentage of Balance
New	72.19 %	50,995,472,631 JPY	79.46 %
Used	27.81 %	13,180,762,364 JPY	20.54 %
Total	100.00 %	64,176,234,995 JPY	100.00 %

Deal Overview: Counterparties I

Joint Lead Managers:

Merrill Lynch Japan Securities Co., Ltd.
 Nihonbashi 1-chome Building,
 1-4-1, Nihonbashi,
 Chuo-ku,
 Tokyo 103-8230, Japan

Shinsei Securities Co., Ltd.
 Nihonbashi Muromachi Nomura Building,
 2-4-3, Nihonbashi-muromachi,
 Chuo-ku,
 Tokyo 103-0022, Japan

Trust Management Account Bank:

The Bank of Tokyo-Mitsubishi UFJ, Ltd.
 4-2 Toranomom 1-chome,
 Minato-ku
 Tokyo 105-0001, Japan

Rating								
Moody's			Fitch			R&I		
Long Term	Short Term	Outlook	Long Term	Short Term	Outlook	Long Term	Short Term	Outlook
n.a.	n.a.	n.a.	A	F1	Stable	n.a.	n.a.	n.a.
n.a.	n.a.	n.a.	n.a.	n.a.	n.a.	n.a.	n.a.	n.a.
A1	P-1	Stable	A	F1	Negative	AA-	a-1+	Stable

Originator:

Trustor of the First Trust:

Servicer:

Volkswagen Financial Services Japan Ltd.
 Gotenyama Trust Tower 17F
 7-35 Kitashinagawa 4-chome, Shinagawa-ku
 Tokyo 140-0001, Japan

Trustee of the First Trust:

Trustee of the Second Trust:

Shinsei Trust & Banking Co., Ltd.
 Attn.: Driver Japan five
 Trust Management Division

ABL Lender to the First Trust:

Trustor of the Second Trust:

Merrill Lynch Japan Securities Co., Ltd.

Seller of the Trust Beneficial

Interest of the Second Trust

Merrill Lynch Japan Securities Co., Ltd.
Shinsei Securities Co., Ltd.

Deal Overview: Counterparties II

Rating Agencies:

Moody's SF Japan K.K.

Attn.: Driver Japan five
 Structure Finance Group Monitoring Division
 5-1 Atago 2-chome, Minato-ku
 Tokyo 105-6220, Japan
 E-mail: monitor.msfi@moodys.com

Fitch Ratings Japan Limited

Attn.: Driver Japan five
 Structured Finance
 Kojimachi Crystal City East Wing 3rd Floor,
 4-8 Kōjimachi, Chiyoda-ku,
 Tokyo 102-0083, Japan
 E-mail: tokyo.surveillance@fitchratings.com

Rating and Investment Information, Inc.

Attn.: Monitoring Group Department:Structured Finance Department
 Structured Finance Department
 Nihonbashi 1-chome Mitsui Bldg.,
 4-1, Nihonbashi 1-chome, Chuo-ku
 Tokyo 103-0027, Japan
 E-mail: sfmonitor@r-i.co.jp

Rating of VW

Volkswagen Financial Services AG

Volkswagen AG

Rating								
Moody's			Fitch			R&I		
Short Term	Long Term	Outlook	Short Term	Long Term	Outlook	Short Term	Long Term	Outlook
P-1	A1	Negative	n.a.	n.a.	n.a.	n.a.	n.a.	n.a.
P-2	A3	Negative	F2	BBB+	Negative	n.a.	n.a.	n.a.

Information regarding Trust Beneficial Interest of the Second Trust & Asset Backed Loan to the Second Trust

Rating Details

	<u>TBI</u>	<u>ABL</u>
Rating at Issue Date		
Moody's	Aaa(sf)	Aaa(sf)
Fitch	AAAsf	AAAsf
R&I	AAA	AAA
Current Rating		
Moody's	Aaa(sf)	Aaa(sf)
Fitch	AAAsf	AAAsf
R&I	AAA	AAA

Information on TBI & ABL

	<u>TBI</u>	<u>ABL</u>
Initial Balance	31,000,000,000 JPY	29,000,000,000 JPY
Expected Maturity Date	2019/08/28	2019/08/28
Legal Maturity of the Second Trust	2024/06/28	2024/06/28
Payment Dates	28th	28th
Business Day Convention	Modified Following	Modified Following
Listing	None	—

Information on Interest

	<u>TBI</u>	<u>ABL</u>
Fixed/ Floating	Fixed	Fixed
Current Coupon	0.19%	0.19%
Day Count Convention	30/360	30/360

Selling Restriction

The holders of the Beneficial Interest and the ABL Lenders* are prohibited from dividing, assigning, pledging or creating any other security interest over any of the Beneficial Interest and the Asset Backed Loans without the prior written approval of the Trustee of the Second Trust.

(*)The holders of the Beneficial Interest and the ABL Lenders are limited to specified investors (*tokutei toushika*) as defined under Paragraph 31 of Article 2 of the Financial Instruments and Exchange Act (Law no.25 of 1948 as amended).

Clean-Up Call

VWFS Japan as the Trustor of the First Trust has a right at its option to exercise a clean-up call to repurchase of all, but not part, of the outstanding Auto Loan Receivables from the Trustee of the First Trust on any Trust Calculation Date, the Discounted Principal Balance of all outstanding Auto Loan Receivables is expected to be less than ten percent (10%) of the Discounted Principal Balance of the Initial Auto Loan Receivables as of the Initial Cut-off Date after the distribution pursuant to Article 18.1 of the First Trust Agreement on the immediately following First Trust Payment Date.

Pool Information
Pool Balance on Initial Cut-Off Date

Status	Number of Contracts	Outstanding Discounted Principal Balance
Normal	31,976	64,176,234,995 JPY
Cancellation	0	0 JPY
Early Termination	0	0 JPY
Defaulted Receivables	0	0 JPY
Matured	0	0 JPY
Refinance Option	0	0 JPY
Repurchase	0	0 JPY
Total	31,976	64,176,234,995 JPY

Pool Balance before entrustment of Additional Auto Loan Receivables

Status	Number of Contracts on previous EoP	Outstanding Discounted Principal Balance on previous EoP	Number of Contracts "as Collections" during the relevant Monthly Period*	Outstanding Discounted Principal Balance "as Collections" during the relevant Monthly Period*	Number of Contracts EoP before entrustment of Additional Auto Loan Receivables	Outstanding Discounted Principal Balance EoP before entrustment of Additional Auto Loan Receivables
Normal	33,872	64,861,779,892 JPY	33,251	1,632,381,179 JPY	33,251	62,436,339,089 JPY
Cancellation	0	0 JPY	0	0 JPY	0	0 JPY
Early Termination	0	0 JPY	334	610,152,677 JPY	0	0 JPY
Defaulted Receivables	0	0 JPY	2	3,932,416 JPY	0	0 JPY
Matured	0	0 JPY	236	124,305,075 JPY	0	0 JPY
Refinance Option	0	0 JPY	49	54,669,456 JPY	0	0 JPY
Repurchase	0	0 JPY	0	0 JPY	0	0 JPY
Total	33,872	64,861,779,892 JPY	33,872	2,425,440,803 JPY	33,251	62,436,339,089 JPY

Pool Balance after entrustment of Additional Auto Loan Receivables

Status	Number of Contracts EoP before entrustment of Additional Auto Loan Receivables	Outstanding Discounted Principal Balance EoP before entrustment of Additional Auto Loan Receivables	Number of Contracts of Additional Auto Loan Receivables	Outstanding Discounted Principal Balance of Additional Auto Loan Receivables	Number of Contracts EoP after entrustment of Additional Auto Loan Receivables	Outstanding Discounted Principal Balance EoP after entrustment of Additional Auto Loan Receivables
Normal	33,251	62,436,339,089 JPY	1,304	2,647,148,539 JPY	34,555	65,083,487,628 JPY
Cancellation	0	0 JPY	0	0 JPY	0	0 JPY
Early Termination	0	0 JPY	0	0 JPY	0	0 JPY
Defaulted Receivables	0	0 JPY	0	0 JPY	0	0 JPY
Matured	0	0 JPY	0	0 JPY	0	0 JPY
Refinance Option	0	0 JPY	0	0 JPY	0	0 JPY
Repurchase	0	0 JPY	0	0 JPY	0	0 JPY
Total	33,251	62,436,339,089 JPY	1,304	2,647,148,539 JPY	34,555	65,083,487,628 JPY

Limits on Eligibility Criteria

Status Limits on Eligibility Criteria (v) (including Additional Entrustment)	Current Exposure in %	Limits in % of the aggregate Discounted Principal Balance of the Auto Loan Receivables outstanding	Status
(i) on Used Purchased Vehicle	20.22 %	35 %	OK
(ii) on Non-VW Vehicles	0.05 %	5 %	OK
(iii) on Balloon Payment	43.75 %	50 %	OK

Outstanding Balances

Monthly Period: from 2016/06/11 to 2016/07/10
Reporting Date: 2016/07/15
Trust Calculation Date: 2016/07/26

Outstanding Balances

	Number of Contracts	Aggregate Amount of the Discounted Principal Balance	Aggregate Amount of the Nominal Balance
Balance on the previous EoP	33,872	64,861,779,892 JPY	67,305,337,700 JPY
Balance after counting on the Collections during the relevant	33,251	62,436,339,089 JPY	64,745,908,900 JPY
Balance of Additional Auto Loan Receivables	1,304	2,647,148,539 JPY	2,760,958,000 JPY
Aggregate Amount of Auto Loan Receivables	34,555	65,083,487,628 JPY	67,506,866,900 JPY

Collections

	Number of Contracts	Aggregate Amount of the Discounted Principal Balance	Aggregate Amount of the Nominal Balance
Collections: Amortization of current contracts	33,251	1,632,381,179 JPY	1,747,136,300 JPY
Collections: Cancellation	0	0 JPY	0 JPY
Collections: Early Termination	334	610,152,677 JPY	611,822,330 JPY
Collections: Defaulted Receivables	2	3,932,416 JPY	3,947,500 JPY
Collections: Matured	236	124,305,075 JPY	124,520,000 JPY
Collections: Refinance Option	49	54,669,456 JPY	54,770,000 JPY
Collections: Repurchase	0	0 JPY	0 JPY
Sum	33,872	2,425,440,803 JPY	2,542,196,130 JPY

Available Distribution Amount

	Number of Contracts	Aggregate Amount of the Nominal Balance
(a) the Collections for the Monthly Period with respect to such Trust Calculation Date	33,872	2,542,196,130 JPY
(b) drawings from the Cash Collateral Ledger in accordance with Article 18.3 of the First Trust Agreement	0	0 JPY
(c) net investment earnings from Eligible Investments	0	0 JPY
(d) net proceeds from the sale or disposal of the Trust Assets of the First Trust	0	0 JPY
(e) any amount which is carried over from the immediately preceding Trust Calculation Date	0	0 JPY
Sum	33,872	2,542,196,130 JPY

Waterfall

There is no distinction between principal and interest, and all collections go through a single priority of payments			
		Payment	Remaining Amount
Available Distribution Amount	plus	2,542,196,130 JPY	2,542,196,130 JPY
(a) an amount necessary for the payment of all taxes and public charges to be paid to the relevant public authority by the immediately following First Trust Payment Date.	less	0 JPY	2,542,196,130 JPY
(b) an amount necessary for the payment of all Fees for the Trustee of the First Trust to be paid to the Trustee of the First Trust by the immediately following First Trust Payment Date.	less	437,816 JPY	2,541,758,314 JPY
(c) an amount necessary for the payment of the Servicing Fee to be paid to the Servicer by the immediately following First Trust Payment Date.	less	58,375,601 JPY	2,483,382,713 JPY
(d) an amount necessary for the payment of the Trust Expenses of the First Trust as provided in Article 23.1 (including the Rating Fees, Costs of the Second Trust and those fees not otherwise covered by (b) or (c) above) to be paid to the relevant party by the immediately following First Trust Payment Date (including any amounts advanced by the Trustee of the First Trust pursuant to Article 23.3)	less	446,564 JPY	2,482,936,149 JPY
(e) an amount necessary for the payment of overdue and unpaid interest on the Asset Backed Loans to the First Trust (if any) to be paid to the Trustee of the Second Trust by the immediately following First Trust Payment Date.	less	0 JPY	2,482,936,149 JPY
(f) an amount necessary for the payment to the Trustee of the Second Trust of interest on the Asset Backed Loan to the First Trust accruing during the relevant Interest Calculation Period	less	9,500,000 JPY	2,473,436,149 JPY
(g) an amount necessary to top up the balance thereof until it is equal to the Cash Collateral Ledger Target Balance	less	0 JPY	2,473,436,149 JPY
(h) (i) prior to the expiration of the Revolving Period: an amount necessary for the redemption of any Additional Senior Beneficial Interest;	less	2,473,436,149 JPY	0 JPY
(ii) following the expiration of the Revolving Period and prior to the occurrence of an Early Amortization Event, an amount necessary for the payment to the Trustee of the Second Trust of the Asset Backed Loan Principal Payment Amount for the relevant First Trust Payment Date.			
(iii) following the occurrence of the Early Amortization Event, an amount necessary for the payment to the Trustee of the Second Trust of the remaining principal balance of the Asset Backed Loan to the First Trust.			
(i) an amount necessary for the payment to the Trustee of the First Trust of any Indemnified Amounts which are not compensated by the Trustor of the First Trust	less	0 JPY	0 JPY
(j) an amount necessary for the payment to the Subordinated Beneficiary of the Subordinated Beneficial Principal Payment Amount for the relevant First Trust Payment Date.	less	0 JPY	0 JPY
(k) (i) prior to the expiration of the Revolving Period, then (x) if a transfer is made under (j) above, such remaining amount will be transferred to the Expenses Distribution Ledger for payment to the Subordinated Beneficiary as a payment of earnings on the Subordinated Beneficial Interest, and such payment shall be made on the First Trust Payment Date immediately following such Trust Calculation Date or (y) if no transfer is made under (j) above, such remaining amount will be carried forward to the next Trust Calculation Date.	less	0 JPY	0 JPY
(ii) following the expiration of the Revolving Period and prior to the occurrence of an Early Amortization Event, then such remaining amount will be transferred to the Expenses Distribution Ledger for payment to the Subordinated Beneficiary as a payment of earnings on the Subordinated Beneficial Interest, and such payment shall be made on the First Trust Payment Date immediately following such Trust Calculation Date.			
(iii) following the occurrence of an Early Amortization Event, the remaining amount in the Trust Collection Ledger will be carried forward to the next Trust Calculation Date.			

Credit Enhancement

Subordinated Principal Balance as of the relevant First Trust Payment Date

	Percentage of Aggregate Discounted Principal Balance	Value
(i) the aggregate amount of the Discounted Principal Balance of all Auto Loan Receivables outstanding		65,083,487,628 JPY
(ii) Asset Backed Loan Principal Balance on the relevant First Trust Payment Date		60,000,000,000 JPY
Overcollateralization (= (i) - (ii))	7.81 %	5,083,487,628 JPY
Trust Collection Ledger which is carried over from the immediately preceding Trust Calculation Date	0.00 %	0 JPY
The amount in the Cash Collateral Ledger	0.58 %	380,000,000 JPY
Subordinated Principal Balance	8.39 %	5,463,487,628 JPY

Trust Management Account (TMA)

	in JPY	+/-	in JPY (previous)
Initial Balance on Cash Entrustment Date	380,000,000 JPY		0 JPY
Outstanding Balance on First Trust Payment Date	380,000,000 JPY	0 JPY	380,000,000 JPY
(a) Expenses Distribution Ledger	0 JPY	0 JPY	0 JPY
(b) Trust Collection Ledger	0 JPY	0 JPY	0 JPY
(c) Cash Collateral Ledger	380,000,000 JPY	0 JPY	380,000,000 JPY
Cash Collateral Ledger Target Balance	380,000,000 JPY		

Calculation of Credit Enhancement

Driver Japan five's Credit Enhancement consists of the items listed above in the Subordinated Principal Balance as of the relevant date of determination (immediately following the First Trust Payment Date). The result provides an absolute value, which will be applied to the (amortized) Aggregate Discounted Principal Balance as of the end of the relevant date.

The transaction has a Revolving Period of 12 months until February 2017.

Asset Backed Loan Overcollateralization Percentage is (i) prior to the expiration of the Revolving Period, 8.5%, and (ii) following the expiration of the Revolving Period, 11.5%; provided, in each case no Credit Enhancement Increase Condition shall be in effect. After a Level 1 Credit Enhancement Increase Condition in effect, 17% and after a Level 2 Credit Enhancement Increase Condition is in effect, 100%.

Cumulative Gross Loss & Cumulative Repurchased Receivables

Cumulative Defaulted Receivables

	Number of Contracts	Write Offs
Beginning of Period	11	38,034,503 JPY
Defaulted Receivables	2	3,932,416 JPY
End of Period	13	41,966,919 JPY

Cumulative Gross Loss Ratio

The sum of the Discounted Principal Balance of all Auto Loan Receivables that have become Defaulted Receivables from the Initial Cut-off Date through to the end of Monthly Period immediately preceding the relevant Trust Calculation Date

41,966,919 JPY 0.07 %

The sum of (i) the aggregate Discounted Principal Balance of the Initial Auto Loan Receivables as of the Initial Cut-off Date and (ii) the aggregate Discounted Principal Balance as of the relevant Trust Calculation Date of all Additional Auto Loan Receivables (if any) entrusted on the Additional Entrustment Dates which fall six months prior to the relevant Trust Calculation Date.

64,176,234,995 JPY

Performance Triggers

Asset Backed Loan Overcollateralization Percentage was implemented to assure on a monthly basis that no cash is paid to lower steps in the waterfall unless there is sufficient Overcollateralization to support the transaction.

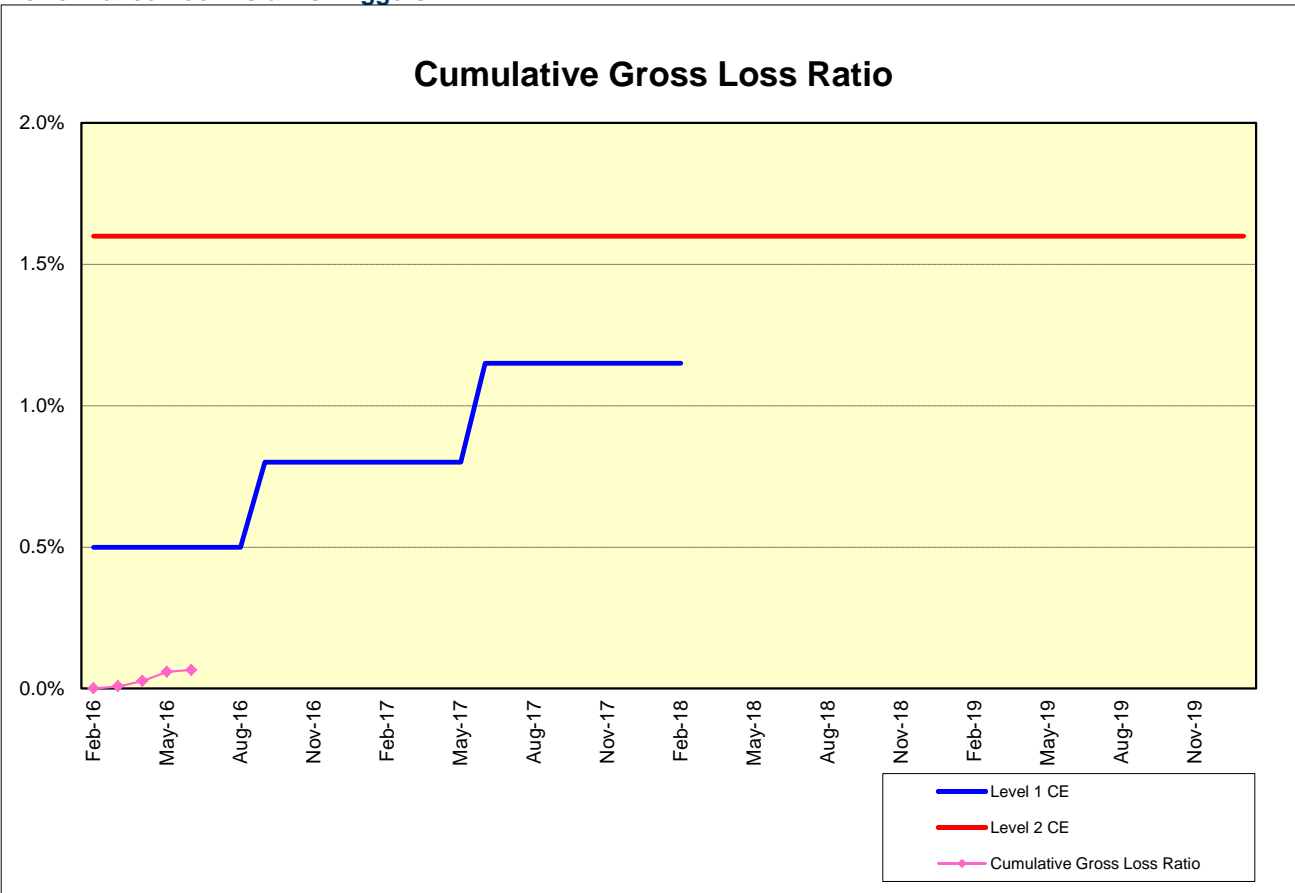
The performance trigger in form of a Credit Enhancement Increase Condition will be activated when the Cumulative Gross Loss Ratio exceeds the defined limits. In this case the Overcollateralization will be increased accordingly.

Levels	Credit Enhancement increase condition	Credit Enhancement increase condition in place?
Level 1 (i)	Cumulative Gross Loss Ratio exceeds 0.5% for any First Trust Payment Date on or prior to August 2016	no
Level 1 (ii)	Cumulative Gross Loss Ratio exceeds 0.8% for any First Trust Payment Date from September 2016 to May 2017	no
Level 1 (iii)	Cumulative Gross Loss Ratio exceeds 1.15% for any First Trust Payment Date from June 2017 to February 2018	no
Level 2	Cumulative Gross Loss Ratio exceeds 1.6% for any First Trust Payment Date	no

	Asset Backed Loan Overcollateralization Percentage
Prior to the expiration of the Revolving Period (No Credit Enhancement Increase Condition is in effect)	8.50 %
Following the expiration of Revolving Period (No Credit Enhancement Increase Condition is in effect)	11.50 %
After a Level 1 Credit Enhancement Increase Condition is in effect	17.00 %
After a Level 2 Credit Enhancement Increase Condition is in effect	100.00 %
Current Asset Backed Loan Overcollateralization Percentage	7.81 %

Cumulative Gross Loss & Cumulative Repurchased Receivables

Performance Pool vis-a-vis Triggers



Cumulative Repurchased Receivables

	Number of Contracts	Repurchase Price
Beginning of Period	0	0 JPY
Repurchased Receivables	0	0 JPY
End of Period	0	0 JPY

Defaulted and Delinquent Contracts

Information of Delinquencies and Defaults

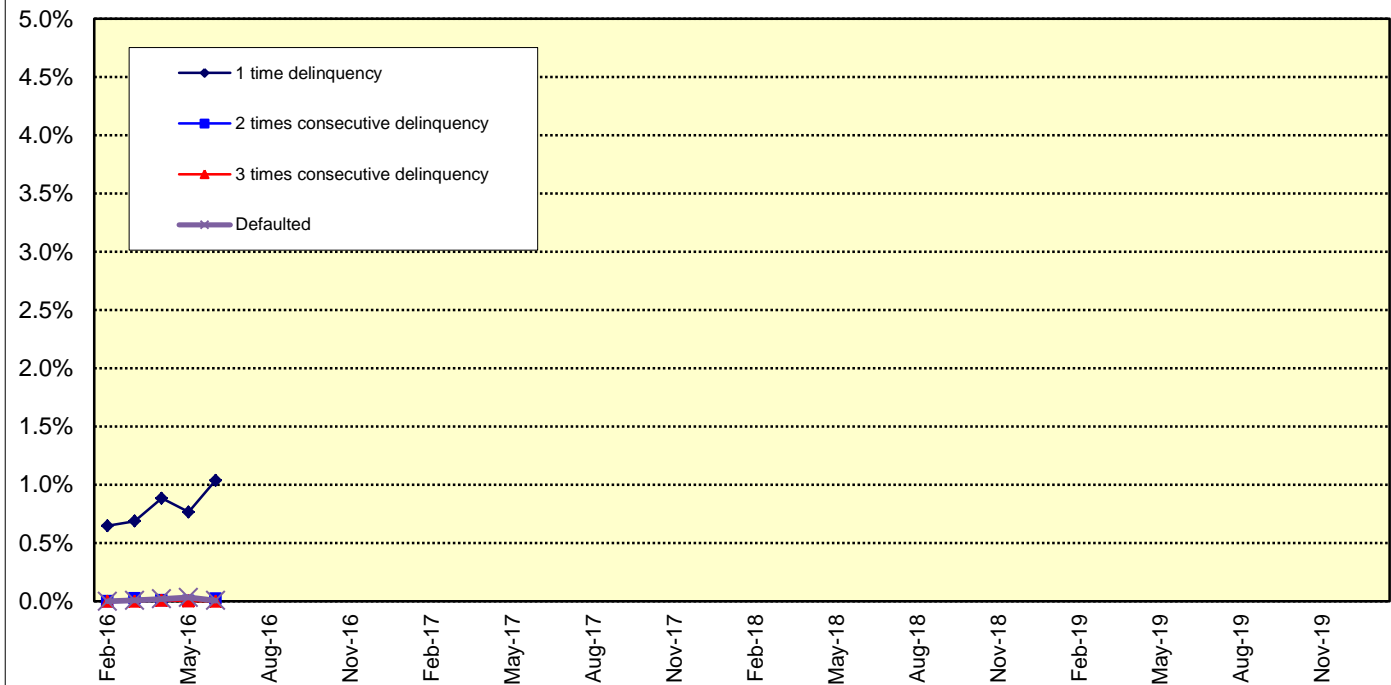
Current Reporting Period	Number of Contracts	Percentage of Contracts (*)	Outstanding Discounted Principal Balance	Percentage of Principal Balance (*)	Outstanding Nominal Balance	Percentage of Nominal Balance (*)
Delinquent	340	1.00 %	689,779,169 JPY	1.06 %	719,709,900 JPY	1.07 %
Default	2	0.01 %	3,932,416 JPY	0.01 %	3,947,500 JPY	0.01 %

(*) Based on the previous EoP

Delinquency Profile (Information Purpose Only)

Days in Arrears	Number of Contracts	Percentage of Contracts	Outstanding Discounted Principal Balance	Percentage of Principal Balance	Outstanding Nominal Balance	Percentage of Nominal Balance
1	335	0.97 %	675,606,947 JPY	1.04 %	705,000,800 JPY	1.04 %
2	5	0.01 %	14,172,222 JPY	0.02 %	14,709,100 JPY	0.02 %
3	0	0.00 %	0 JPY	0.00 %	0 JPY	0.00 %
Total	340	0.98 %	689,779,169 JPY	1.06 %	719,709,900 JPY	1.07 %

Delinquent / Defaulted (Gross Loss) Ratio



Run Out Schedule

ROS on the previous EoP on 2016/06/10

Next Payment Month	Number of Contracts	ABS Outstanding Principal	ABS Outstanding Interest	Outstanding Installment	ABS Remaining Principal	ABS Remaining Interest	ABS Remaining Installment
05.2016	33,872	64,861,779,892 JPY	2,443,557,808 JPY	67,305,337,700 JPY	0 JPY	0 JPY	0 JPY
06.2016	33,872	63,032,058,409 JPY	2,327,440,191 JPY	65,359,498,600 JPY	1,829,721,483 JPY	116,117,617 JPY	1,945,839,100 JPY
07.2016	33,586	61,072,983,236 JPY	2,214,712,864 JPY	63,287,696,100 JPY	1,959,075,173 JPY	112,727,327 JPY	2,071,802,500 JPY
08.2016	33,362	59,639,534,295 JPY	2,105,673,905 JPY	61,745,208,200 JPY	1,433,448,941 JPY	109,038,959 JPY	1,542,487,900 JPY
09.2016	33,120	58,269,635,067 JPY	1,999,302,833 JPY	60,268,937,900 JPY	1,369,899,228 JPY	106,371,072 JPY	1,476,270,300 JPY
10.2016	32,712	56,999,192,662 JPY	1,895,431,538 JPY	58,894,624,200 JPY	1,270,442,405 JPY	103,871,295 JPY	1,374,313,700 JPY
11.2016	32,431	55,613,874,934 JPY	1,793,882,166 JPY	57,407,757,100 JPY	1,385,317,728 JPY	101,549,372 JPY	1,486,867,100 JPY
12.2016	32,032	53,192,313,194 JPY	1,694,780,806 JPY	54,887,094,000 JPY	2,421,561,740 JPY	99,101,360 JPY	2,520,663,100 JPY
01.2017	31,578	51,608,315,232 JPY	1,600,112,368 JPY	53,208,427,600 JPY	1,583,997,962 JPY	94,668,438 JPY	1,678,666,400 JPY
02.2017	31,229	50,195,127,519 JPY	1,508,360,781 JPY	51,703,488,300 JPY	1,413,187,713 JPY	91,751,587 JPY	1,504,939,300 JPY
03.2017	30,722	48,554,960,783 JPY	1,419,165,617 JPY	49,974,126,400 JPY	1,640,166,736 JPY	89,195,164 JPY	1,729,361,900 JPY
04.2017	29,936	47,281,042,962 JPY	1,332,873,938 JPY	48,613,916,900 JPY	1,273,917,821 JPY	86,291,679 JPY	1,360,209,500 JPY
05.2017	29,661	45,801,783,318 JPY	1,248,813,282 JPY	47,050,596,600 JPY	1,479,259,644 JPY	84,060,656 JPY	1,563,320,300 JPY
06.2017	29,168	43,745,840,986 JPY	1,167,213,414 JPY	44,913,054,400 JPY	2,055,942,332 JPY	81,599,868 JPY	2,137,542,200 JPY
07.2017	28,518	41,709,749,257 JPY	1,089,083,843 JPY	42,798,833,100 JPY	2,036,091,729 JPY	78,129,571 JPY	2,114,221,300 JPY
08.2017	27,990	40,149,188,918 JPY	1,014,497,982 JPY	41,163,686,900 JPY	1,560,560,339 JPY	74,585,861 JPY	1,635,146,200 JPY
09.2017	27,485	38,265,198,823 JPY	942,574,477 JPY	39,207,773,300 JPY	1,883,990,095 JPY	71,923,505 JPY	1,955,913,600 JPY
10.2017	26,574	36,770,957,285 JPY	873,658,915 JPY	37,644,616,200 JPY	1,494,241,538 JPY	68,915,562 JPY	1,563,157,100 JPY
11.2017	25,955	35,124,408,827 JPY	807,255,773 JPY	35,933,664,600 JPY	1,646,548,458 JPY	66,403,142 JPY	1,712,951,600 JPY
12.2017	25,175	32,200,502,041 JPY	743,513,759 JPY	32,944,015,800 JPY	2,923,906,786 JPY	63,742,014 JPY	2,987,648,800 JPY
01.2018	24,007	30,276,882,963 JPY	684,462,937 JPY	30,961,345,900 JPY	1,923,619,078 JPY	59,050,822 JPY	2,950,622,500 JPY
02.2018	23,117	28,230,456,551 JPY	628,668,849 JPY	28,859,125,400 JPY	2,046,426,412 JPY	55,794,088 JPY	2,102,220,500 JPY
03.2018	21,896	25,012,896,109 JPY	576,084,391 JPY	25,588,980,500 JPY	3,217,560,442 JPY	52,584,458 JPY	3,270,144,900 JPY
04.2018	19,621	23,655,089,249 JPY	527,938,051 JPY	24,183,027,300 JPY	1,357,806,860 JPY	48,146,340 JPY	1,405,953,200 JPY
05.2018	18,943	21,915,139,176 JPY	481,977,924 JPY	22,397,117,100 JPY	1,739,950,073 JPY	45,960,127 JPY	1,785,910,200 JPY
06.2018	17,924	19,486,661,536 JPY	438,770,664 JPY	19,925,432,200 JPY	2,428,477,640 JPY	43,207,260 JPY	2,471,684,900 JPY
07.2018	16,462	17,603,485,716 JPY	399,351,984 JPY	18,002,837,700 JPY	1,883,175,820 JPY	39,418,680 JPY	1,922,594,500 JPY
08.2018	15,465	15,901,658,882 JPY	363,329,318 JPY	16,264,988,200 JPY	1,701,826,834 JPY	36,022,666 JPY	1,737,849,500 JPY
09.2018	14,380	13,660,032,138 JPY	330,287,362 JPY	13,990,319,500 JPY	2,241,626,744 JPY	33,041,956 JPY	2,274,668,700 JPY
10.2018	12,831	12,381,721,856 JPY	300,994,844 JPY	12,682,716,700 JPY	1,278,310,282 JPY	29,292,518 JPY	1,307,602,800 JPY
11.2018	12,018	10,952,441,812 JPY	274,012,388 JPY	11,226,454,200 JPY	1,429,280,044 JPY	26,982,456 JPY	1,456,262,500 JPY
12.2018	11,076	9,866,871,131 JPY	249,521,969 JPY	10,116,393,100 JPY	1,085,570,681 JPY	24,490,419 JPY	1,110,061,100 JPY
01.2019	10,547	9,155,075,649 JPY	227,291,251 JPY	9,382,366,900 JPY	711,795,482 JPY	22,230,718 JPY	734,026,200 JPY
02.2019	10,091	8,530,835,459 JPY	206,580,141 JPY	8,737,415,600 JPY	624,240,190 JPY	20,711,110 JPY	644,951,300 JPY
03.2019	9,528	7,829,946,022 JPY	187,186,078 JPY	8,017,132,100 JPY	700,889,437 JPY	19,394,063 JPY	720,283,500 JPY
04.2019	8,731	7,438,870,711 JPY	169,280,689 JPY	7,608,111,400 JPY	391,115,311 JPY	17,905,389 JPY	409,020,700 JPY
05.2019	8,464	7,035,509,721 JPY	152,261,179 JPY	7,187,770,900 JPY	403,320,990 JPY	17,019,510 JPY	420,340,500 JPY
06.2019	8,132	6,483,356,281 JPY	136,175,819 JPY	6,619,532,100 JPY	552,153,440 JPY	16,085,360 JPY	568,238,800 JPY
07.2019	7,679	5,928,207,508 JPY	121,329,392 JPY	6,049,536,900 JPY	555,148,427 JPY	14,846,427 JPY	569,990,200 JPY
08.2019	7,333	5,509,233,717 JPY	107,732,083 JPY	5,616,965,800 JPY	418,973,791 JPY	13,597,309 JPY	432,571,100 JPY
09.2019	6,991	5,065,901,019 JPY	95,078,881 JPY	5,160,979,900 JPY	443,332,698 JPY	12,653,202 JPY	455,985,900 JPY
10.2019	6,489	4,706,823,849 JPY	83,415,451 JPY	4,790,239,300 JPY	359,077,170 JPY	11,663,430 JPY	370,740,600 JPY
11.2019	6,141	4,363,462,922 JPY	72,579,478 JPY	4,436,042,400 JPY	343,360,927 JPY	10,835,973 JPY	354,196,900 JPY
12.2019	5,790	3,815,085,127 JPY	62,516,773 JPY	3,877,601,900 JPY	548,377,795 JPY	10,062,705 JPY	558,440,500 JPY
01.2020	5,387	3,435,441,178 JPY	53,685,122 JPY	3,489,126,300 JPY	379,643,949 JPY	8,831,651 JPY	388,475,600 JPY
02.2020	5,056	3,099,365,301 JPY	45,731,799 JPY	3,145,097,100 JPY	336,075,877 JPY	7,953,323 JPY	344,029,200 JPY
03.2020	4,628	2,721,450,348 JPY	38,550,452 JPY	2,760,000,800 JPY	377,914,953 JPY	7,181,347 JPY	385,096,300 JPY
04.2020	4,080	2,497,167,574 JPY	32,230,526 JPY	2,529,398,100 JPY	224,282,774 JPY	6,319,926 JPY	230,602,700 JPY
05.2020	3,818	2,226,748,882 JPY	26,434,018 JPY	2,253,182,900 JPY	270,418,692 JPY	5,796,508 JPY	276,215,200 JPY
06.2020	3,451	1,919,243,257 JPY	21,270,343 JPY	1,940,513,600 JPY	307,505,625 JPY	5,163,675 JPY	312,669,300 JPY
07.2020	3,078	1,610,727,055 JPY	16,833,145 JPY	1,627,560,200 JPY	308,516,202 JPY	4,437,198 JPY	312,953,400 JPY
08.2020	2,715	1,324,082,795 JPY	13,105,905 JPY	1,337,188,700 JPY	286,644,260 JPY	3,727,240 JPY	290,371,500 JPY
09.2020	2,301	957,612,090 JPY	10,026,910 JPY	967,639,000 JPY	366,470,705 JPY	3,078,995 JPY	369,549,700 JPY
10.2020	1,710	727,297,973 JPY	7,756,727 JPY	735,054,700 JPY	230,314,117 JPY	2,270,183 JPY	232,584,300 JPY
11.2020	1,330	438,644,245 JPY	6,025,455 JPY	444,669,700 JPY	288,653,728 JPY	1,731,272 JPY	290,385,000 JPY
12.2020	862	343,417,277 JPY	4,951,823 JPY	348,369,100 JPY	95,226,968 JPY	1,073,632 JPY	96,300,600 JPY
01.2021	755	256,686,770 JPY	4,098,630 JPY	260,785,400 JPY	86,730,507 JPY	853,193 JPY	87,583,700 JPY
02.2021	623	192,311,920 JPY	3,431,580 JPY	195,743,500 JPY	64,374,850 JPY	667,050 JPY	65,041,900 JPY
03.2021	522	144,328,801 JPY	2,895,999 JPY	147,224,800 JPY	47,983,119 JPY	535,581 JPY	48,518,700 JPY
04.2021	426	128,518,357 JPY	2,464,943 JPY	130,983,300 JPY	15,810,444 JPY	431,056 JPY	16,241,500 JPY
05.2021	394	113,941,408 JPY	2,077,192 JPY	116,018,600 JPY	14,576,949 JPY	387,751 JPY	14,964,700 JPY
06.2021	342	96,551,938 JPY	1,729,862 JPY	98,281,800 JPY	17,389,470 JPY	347,330 JPY	17,736,800 JPY
07.2021	287	78,388,899 JPY	1,432,201 JPY	79,821,100 JPY	18,163,039 JPY	297,661 JPY	18,460,700 JPY
08.2021	257	66,602,296 JPY	1,188,404 JPY	67,790,700 JPY	11,786,603 JPY	243,797 JPY	12,030,400 JPY
09.2021	235	57,570,798 JPY	979,802 JPY	58,550,600 JPY	9,031,498 JPY	208,602 JPY	9,240,100 JPY
10.2021	195	49,892,859 JPY	798,241 JPY	50,691,100 JPY	7,677,939 JPY	181,561 JPY	7,859,500 JPY
11.2021	167	43,260,996 JPY	640,004 JPY	43,901,000 JPY	6,631,863 JPY	158,237 JPY	6,790,100 JPY
12.2021	129	34,217,552 JPY	502,248 JPY	34,719,800 JPY	9,043,444 JPY	137,756 JPY	9,181,200 JPY
01.2022	116	27,597,038 JPY	393,162 JPY	27,990,200 JPY	6,620,514 JPY	109,086 JPY	6,729,600 JPY
02.2022	102	23,454,899 JPY	305,201 JPY	23,760,100 JPY	4,142,139 JPY	87,961 JPY	4,230,100 JPY
03.2022	91	19,770,821 JPY	230,479 JPY	20,001,300 JPY	3,684,078 JPY	74,722 JPY	3,758,800 JPY
04.2022	80	16,569,106 JPY	167,494 JPY	16,736,600 JPY	3,201,715 JPY	62,985 JPY	3,264,700 JPY
05.2022	75	13,573,487 JPY	114,713 JPY	13,688,200 JPY	2,995,619 JPY	52,781 JPY	3,048,400 JPY
06.2022	71	9,684,422 JPY	71,478 JPY	9,755,900 JPY	3,889,065 JPY	43,235 JPY	3,932,300 JPY
07.2022	58	5,784,970 JPY	40,630 JPY	5,825,600 JPY	3,899,452 JPY	30,848 JPY	3,930,300 JPY
08.2022	47	3,622,796 JPY	22,204 JPY	3,645,000 JPY	2,162,174 JPY	18,426 JPY	2,180,600 JPY
09.2022	41	2,026,532 JPY	10,668 JPY	2,037,200 JPY	1,596,264 JPY	11,536 JPY	1,607,800 JPY
10.2022	23	979,587 JPY	4,213 JPY	983,800 JPY	1,046,945 JPY	6,455 JPY	1,053,400 JPY
11.2022	15	283,709 JPY	1,091 JPY	284,800 JPY	695,878 JPY	3,122 JPY	699,000 JPY
12.2022	3	58,713 JPY	187 JPY	58,900 JPY	224,996 JPY	904 JPY	225,900 JPY
01.2023	1	0 JPY	0 JPY	0 JPY	58,713 JPY	187 JPY	58,900 JPY

Run Out Schedule

ROS on the relevant EoP on 2016/07/10

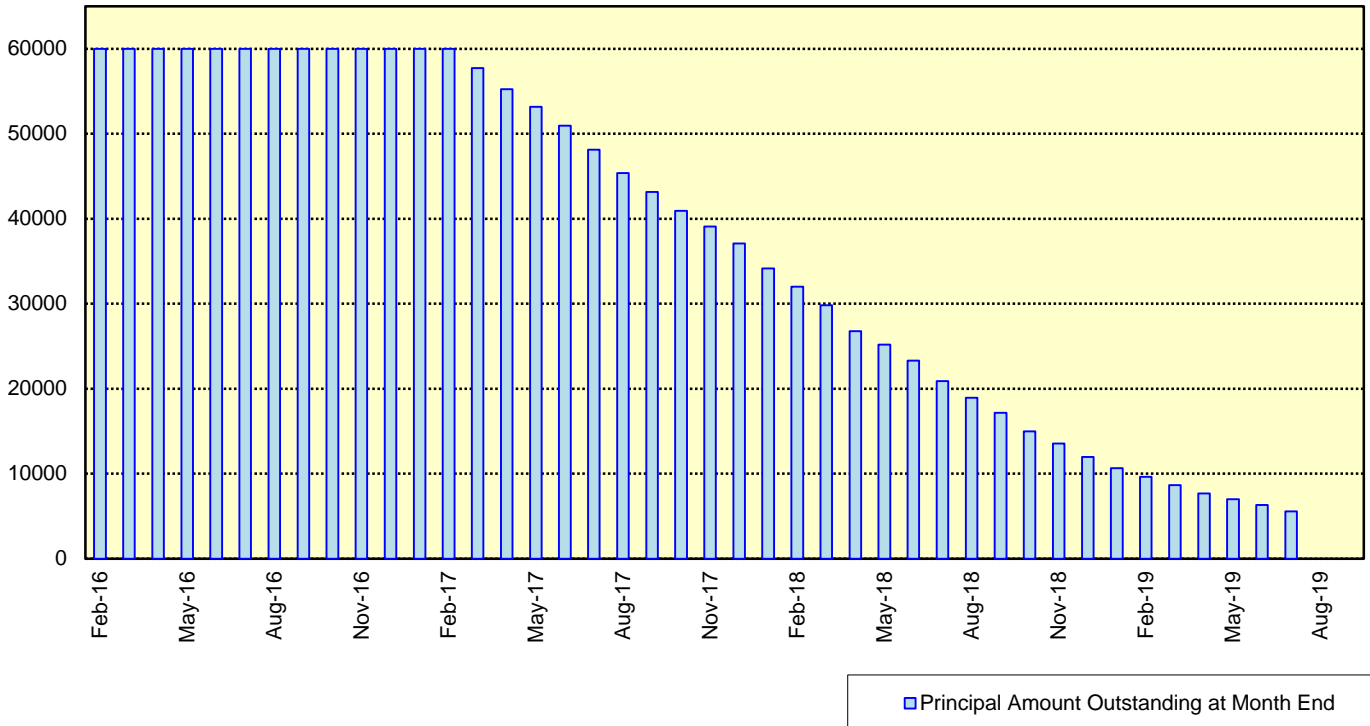
Next Payment Month	Number of Contracts	ABS Outstanding Principal	ABS Outstanding Interest	Outstanding Installment	ABS Remaining Principal	ABS Remaining Interest	ABS Remaining Installment
06.2016	34,555	65,083,487,628 JPY	2,423,379,272 JPY	67,506,866,900 JPY	0 JPY	0 JPY	0 JPY
07.2016	34,555	63,083,694,819 JPY	2,306,867,481 JPY	65,390,562,300 JPY	1,999,792,809 JPY	116,511,791 JPY	2,116,304,600 JPY
08.2016	34,343	61,624,966,668 JPY	2,194,124,132 JPY	63,819,090,800 JPY	1,458,728,151 JPY	112,743,349 JPY	1,571,471,500 JPY
09.2016	34,105	60,222,058,683 JPY	2,084,103,417 JPY	62,306,162,100 JPY	1,402,907,985 JPY	110,020,715 JPY	1,512,928,700 JPY
10.2016	33,694	58,926,402,693 JPY	1,976,647,707 JPY	60,903,050,400 JPY	1,295,655,990 JPY	107,455,710 JPY	1,403,111,700 JPY
11.2016	33,412	57,512,242,208 JPY	1,871,564,892 JPY	59,383,807,100 JPY	1,414,160,485 JPY	105,082,815 JPY	1,519,243,300 JPY
12.2016	33,013	55,029,485,033 JPY	1,768,991,067 JPY	56,798,476,100 JPY	2,482,757,175 JPY	102,573,825 JPY	2,585,331,000 JPY
01.2017	32,559	53,402,937,138 JPY	1,670,968,762 JPY	55,073,905,900 JPY	1,626,547,895 JPY	98,022,305 JPY	1,724,570,200 JPY
02.2017	32,204	51,951,406,282 JPY	1,575,951,518 JPY	53,527,357,800 JPY	1,451,530,856 JPY	95,017,244 JPY	1,546,548,100 JPY
03.2017	31,695	50,270,934,347 JPY	1,483,557,853 JPY	51,754,492,200 JPY	1,680,471,935 JPY	92,393,665 JPY	1,772,865,600 JPY
04.2017	30,896	48,963,807,329 JPY	1,394,139,371 JPY	50,357,946,700 JPY	1,307,127,018 JPY	89,418,482 JPY	1,396,545,500 JPY
05.2017	30,614	47,456,314,592 JPY	1,307,016,608 JPY	48,763,331,200 JPY	1,507,492,737 JPY	87,122,763 JPY	1,594,615,500 JPY
06.2017	30,123	45,342,495,022 JPY	1,222,412,778 JPY	46,564,907,800 JPY	2,113,819,570 JPY	84,603,830 JPY	2,198,423,400 JPY
07.2017	29,458	43,252,713,697 JPY	1,141,383,003 JPY	44,394,096,700 JPY	2,089,781,325 JPY	81,029,775 JPY	2,170,811,100 JPY
08.2017	28,925	41,661,319,394 JPY	1,063,996,806 JPY	42,725,316,200 JPY	1,591,394,303 JPY	77,386,197 JPY	1,668,780,500 JPY
09.2017	28,413	39,740,621,219 JPY	989,335,381 JPY	40,729,956,600 JPY	1,920,698,175 JPY	74,661,425 JPY	1,995,359,600 JPY
10.2017	27,483	38,213,846,485 JPY	917,748,215 JPY	39,131,594,700 JPY	1,526,774,734 JPY	71,587,166 JPY	1,598,361,900 JPY
11.2017	26,856	36,521,256,448 JPY	848,732,552 JPY	37,369,989,000 JPY	1,692,590,037 JPY	69,015,663 JPY	1,761,605,700 JPY
12.2017	26,062	33,525,120,455 JPY	782,452,645 JPY	34,307,573,100 JPY	2,996,135,993 JPY	66,279,907 JPY	3,062,279,000 JPY
01.2018	24,876	31,549,326,129 JPY	720,986,671 JPY	32,270,312,800 JPY	1,975,794,326 JPY	61,465,974 JPY	2,037,260,300 JPY
02.2018	23,966	29,433,994,102 JPY	662,876,098 JPY	30,096,870,200 JPY	2,115,332,027 JPY	58,110,573 JPY	2,173,442,600 JPY
03.2018	22,715	26,151,579,382 JPY	608,079,018 JPY	26,759,658,400 JPY	3,282,414,720 JPY	54,797,080 JPY	3,337,211,800 JPY
04.2018	20,386	24,747,317,797 JPY	557,829,003 JPY	25,305,146,800 JPY	1,404,261,585 JPY	50,250,015 JPY	1,454,511,600 JPY
05.2018	19,682	22,960,253,962 JPY	509,841,538 JPY	23,470,095,500 JPY	1,787,063,835 JPY	47,987,465 JPY	1,835,051,300 JPY
06.2018	18,643	20,468,943,833 JPY	464,682,667 JPY	20,933,626,500 JPY	2,491,310,129 JPY	45,158,871 JPY	2,536,469,000 JPY
07.2018	17,154	18,527,011,002 JPY	423,418,298 JPY	18,950,429,300 JPY	1,941,932,831 JPY	41,264,369 JPY	1,983,197,200 JPY
08.2018	16,136	16,799,372,600 JPY	385,654,900 JPY	17,185,027,500 JPY	1,727,638,402 JPY	37,763,398 JPY	1,765,401,800 JPY
09.2018	15,044	14,488,113,363 JPY	350,921,637 JPY	14,839,035,000 JPY	2,311,259,237 JPY	34,733,263 JPY	2,345,992,500 JPY
10.2018	13,456	13,172,305,823 JPY	320,042,777 JPY	13,492,348,600 JPY	1,315,807,540 JPY	30,878,860 JPY	1,346,686,400 JPY
11.2018	12,628	11,697,000,754 JPY	291,541,946 JPY	11,988,542,700 JPY	1,475,305,069 JPY	28,500,831 JPY	1,503,805,900 JPY
12.2018	11,665	10,536,422,654 JPY	265,616,746 JPY	10,802,039,400 JPY	1,160,578,100 JPY	25,925,200 JPY	1,186,503,300 JPY
01.2019	11,100	9,765,840,640 JPY	242,090,360 JPY	10,007,931,000 JPY	770,582,014 JPY	23,526,386 JPY	794,108,400 JPY
02.2019	10,608	9,074,149,728 JPY	220,197,472 JPY	9,294,347,200 JPY	691,690,912 JPY	21,892,888 JPY	713,583,800 JPY
03.2019	10,000	8,283,442,923 JPY	199,727,577 JPY	8,483,170,500 JPY	790,706,805 JPY	20,469,895 JPY	811,176,700 JPY
04.2019	9,129	7,843,298,877 JPY	180,899,923 JPY	8,024,198,800 JPY	440,144,046 JPY	18,827,654 JPY	458,971,700 JPY
05.2019	8,827	7,430,027,717 JPY	163,030,183 JPY	7,593,057,900 JPY	413,271,160 JPY	17,869,740 JPY	431,140,900 JPY
06.2019	8,489	6,860,754,718 JPY	146,116,782 JPY	7,006,871,500 JPY	569,272,999 JPY	16,913,401 JPY	586,186,400 JPY
07.2019	8,031	6,283,512,492 JPY	130,478,908 JPY	6,413,991,400 JPY	577,242,226 JPY	15,637,874 JPY	592,880,100 JPY
08.2019	7,676	5,849,448,266 JPY	116,136,934 JPY	5,965,585,200 JPY	434,064,226 JPY	14,341,974 JPY	448,406,200 JPY
09.2019	7,327	5,394,242,919 JPY	102,772,381 JPY	5,497,015,300 JPY	455,205,347 JPY	13,364,553 JPY	468,569,900 JPY
10.2019	6,823	5,023,934,839 JPY	90,422,661 JPY	5,114,357,500 JPY	370,308,080 JPY	12,349,720 JPY	382,657,800 JPY
11.2019	6,469	4,668,221,975 JPY	78,925,325 JPY	4,747,147,300 JPY	355,712,864 JPY	11,497,336 JPY	367,210,200 JPY
12.2019	6,110	4,098,521,467 JPY	68,228,233 JPY	4,166,749,700 JPY	569,700,508 JPY	10,697,092 JPY	580,397,600 JPY
01.2020	5,699	3,700,111,160 JPY	58,806,940 JPY	3,758,918,100 JPY	398,410,307 JPY	9,421,293 JPY	407,831,600 JPY
02.2020	5,355	3,349,268,188 JPY	50,306,212 JPY	3,399,574,400 JPY	350,842,972 JPY	8,500,728 JPY	359,343,700 JPY
03.2020	4,919	2,957,588,787 JPY	42,611,913 JPY	3,000,200,700 JPY	391,679,401 JPY	7,694,299 JPY	399,373,700 JPY
04.2020	4,360	2,720,409,286 JPY	35,808,914 JPY	2,756,218,200 JPY	237,179,501 JPY	6,802,999 JPY	243,982,500 JPY
05.2020	4,086	2,437,732,602 JPY	29,556,098 JPY	2,467,288,700 JPY	282,676,684 JPY	6,252,816 JPY	288,929,500 JPY
06.2020	3,710	2,117,243,438 JPY	23,963,762 JPY	2,141,207,200 JPY	320,489,164 JPY	5,592,336 JPY	326,081,500 JPY
07.2020	3,332	1,792,439,902 JPY	19,125,498 JPY	1,811,565,400 JPY	324,803,536 JPY	4,838,264 JPY	329,641,800 JPY
08.2020	2,961	1,494,487,388 JPY	15,032,912 JPY	1,509,520,300 JPY	297,952,514 JPY	4,092,586 JPY	302,045,100 JPY
09.2020	2,542	1,114,903,170 JPY	11,613,230 JPY	1,126,516,400 JPY	379,584,218 JPY	3,419,682 JPY	383,003,900 JPY
10.2020	1,935	872,703,186 JPY	9,028,414 JPY	881,731,600 JPY	242,199,984 JPY	2,584,816 JPY	244,784,800 JPY
11.2020	1,548	576,675,175 JPY	7,008,525 JPY	583,683,700 JPY	296,028,011 JPY	2,019,889 JPY	298,047,900 JPY
12.2020	1,071	457,688,106 JPY	5,659,294 JPY	463,347,400 JPY	118,987,069 JPY	1,349,231 JPY	120,336,300 JPY
01.2021	938	345,187,755 JPY	4,581,545 JPY	349,769,300 JPY	112,500,351 JPY	1,077,749 JPY	113,578,100 JPY
02.2021	776	254,996,949 JPY	3,739,351 JPY	258,736,300 JPY	90,190,806 JPY	842,194 JPY	91,033,000 JPY
03.2021	639	164,797,701 JPY	3,078,099 JPY	167,875,800 JPY	90,199,248 JPY	661,252 JPY	90,860,500 JPY
04.2021	473	136,027,555 JPY	2,600,745 JPY	138,628,300 JPY	28,770,146 JPY	477,354 JPY	29,247,500 JPY
05.2021	416	120,617,864 JPY	2,191,636 JPY	122,809,500 JPY	15,409,691 JPY	409,109 JPY	15,818,800 JPY
06.2021	361	102,302,781 JPY	1,825,219 JPY	104,128,000 JPY	18,315,083 JPY	366,417 JPY	18,681,500 JPY
07.2021	305	83,335,535 JPY	1,511,065 JPY	84,846,600 JPY	18,967,246 JPY	314,154 JPY	19,281,400 JPY
08.2021	274	70,761,960 JPY	1,253,040 JPY	72,015,000 JPY	12,573,575 JPY	258,025 JPY	12,831,600 JPY
09.2021	251	61,099,873 JPY	1,032,427 JPY	62,132,300 JPY	9,662,087 JPY	220,613 JPY	9,882,700 JPY
10.2021	209	52,894,962 JPY	840,638 JPY	53,735,600 JPY	8,204,911 JPY	191,789 JPY	8,396,700 JPY
11.2021	180	45,759,552 JPY	673,648 JPY	46,433,200 JPY	7,135,410 JPY	166,990 JPY	7,302,400 JPY
12.2021	142	36,141,141 JPY	528,559 JPY	36,669,700 JPY	9,618,411 JPY	145,089 JPY	9,763,500 JPY
01.2022	126	29,060,932 JPY	413,768 JPY	29,474,700 JPY	7,080,209 JPY	114,791 JPY	7,195,000 JPY
02.2022	111	24,588,864 JPY	321,436 JPY	24,910,300 JPY	4,472,068 JPY	92,332 JPY	4,564,400 JPY
03.2022	98	20,662,314 JPY	243,286 JPY	20,905,600 JPY	3,926,550 JPY	78,150 JPY	4,004,700 JPY
04.2022	86	17,267,064 JPY	177,536 JPY	17,444,600 JPY	3,395,250 JPY	65,750 JPY	3,461,000 JPY
05.2022	77	14,185,168 JPY	122,532 JPY	14,307,700 JPY	3,081,896 JPY	55,004 JPY	3,136,900 JPY
06.2022	73	10,209,551 JPY	77,349 JPY	10,286,900 JPY	3,975,617 JPY	45,183 JPY	4,020,800 JPY
07.2022	60	6,223,272 JPY	44,828 JPY	6,268,100 JPY	3,986,279 JPY	32,521 JPY	4,018,800 JPY
08.2022	49	3,973,995 JPY	25,005 JPY	3,999,000 JPY	2,249,277 JPY	19,823 JPY	2,269,100 JPY
09.2022	43	2,290,350 JPY	12,350 JPY	2,302,700 JPY	1,683,645 JPY	12,655 JPY	1,696,300 JPY
10.2022	25	1,155,745 JPY	5,055 JPY	1,160,800 JPY	1,134,605 JPY	7,295 JPY	1,141,900 JPY
11.2022	17	371,928 JPY	1,372 JPY	373,300 JPY	783,817 JPY	3,683 JPY	787,500 JPY
12.2022	5	58,713 JPY	187 JPY	58,900 JPY	313,215 JPY	1,185 JPY	314,400 JPY
01.2023	1	0 JPY	0 JPY	0 JPY	58,713 JPY	187 JPY	58,900 JPY

Expected Amortisation

Expected Amortization to the Second Trust

JPY mil.

Assuming a Clean-Up Call at 10% of the Initial Outstanding Balance, annual prepayments of 10% and 0% defaults.



Distribution by Sub-Servicer

Sub-Servicer	Number of Loans	Percentage of Loans	Outstanding Principal Balance	Percentage of Balance
Cedyna	20,999	60.77 %	40,383,030,053 JPY	62.05 %
Jaccs	13,556	39.23 %	24,700,457,575 JPY	37.95 %
Total	34,555	100.00 %	65,083,487,628 JPY	100.00 %

Distribution by Brand

Make	Number of Loans	Percentage of Loans	Outstanding Discounted Principal Balance	Percentage of Balance
VW	22,025	63.74 %	34,132,499,442 JPY	52.44 %
Audi	12,477	36.11 %	30,790,114,048 JPY	47.31 %
Bentley	19	0.05 %	103,088,948 JPY	0.16 %
Lamborghini	5	0.01 %	27,681,080 JPY	0.04 %
Other	29	0.08 %	30,104,110 JPY	0.05 %
Total	34,555	100.00 %	65,083,487,628 JPY	100.00 %

Distribution by New and Used
Distribution by New and Used

New or Used	Number of Loans	Percentage of Loans	Outstanding Discounted Principal Balance	Percentage of Balance
New	24,868	71.97 %	51,921,442,695 JPY	79.78 %
Used	8,015	23.19 %	12,146,599,121 JPY	18.66 %
Used (Prolonged)	1,672	4.84 %	1,015,445,812 JPY	1.56 %
Total	34,555	100.00 %	65,083,487,628 JPY	100.00 %

Distribution by Brand New and Used

New or Used	Number of Loans	Percentage of Loans	Outstanding Discounted Principal Balance	Percentage of Balance
VW New	16,039	46.42 %	27,828,511,685 JPY	42.76 %
VW Used	4,604	13.32 %	5,527,900,887 JPY	8.49 %
VW Used (Prolonged)	1,382	4.00 %	776,086,870 JPY	1.19 %
Audi New	8,813	25.50 %	24,006,132,999 JPY	36.89 %
Audi Used	3,374	9.76 %	6,544,622,107 JPY	10.06 %
Audi Used (Prolonged)	290	0.84 %	239,358,942 JPY	0.37 %
Other	53	0.15 %	160,874,138 JPY	0.25 %
Total	34,555	100.00 %	65,083,487,628 JPY	100.00 %

Distribution by Product Type

Loan Type List

Loan Type	Description
100	Volkswagen Owner's Plan
100	Audi Owner's Plan
100	Lamborghini Auto Loan
100	Bentley Auto Loan
101	Twin Loan
105	Refinanced Volkswagen Solutions
106	Refinanced Volkswagen Das Welt Auto with refinance option *
106	Refinanced Audi S-Loan/ S-Loan Plus
106	Refinanced Lamborghini Hyper Premium Plan
106	Refinanced Bentley My Flying B
140	Volkswagen Solutions
150	Volkswagen Das Welt Auto with refinance option **
150	Audi S-Loan
150	Lamborghini Hyper Premium Plan
150	Bentley My Flying B
151	Audi S-Loan Plus

(*) The name was changed from "Refinanced Volkswagen GUC with refinance option" effective from 1 February 2012.

No other changes were made to auto loan agreements.

(**) The name was changed from "Volkswagen GUC with refinance option" effective from 1 February 2012.

No other changes were made to auto loan agreements.

Product Type

Loan Type	Number of Loans	Percentage of Loans	Outstanding Discounted Principal Balance	Percentage of Balance
100	6,649	19.24 %	8,853,811,921 JPY	13.60 %
101	9	0.03 %	3,010,199 JPY	0.00 %
105	1,313	3.80 %	761,004,381 JPY	1.17 %
106	360	1.04 %	254,988,993 JPY	0.39 %
140-VFJ	2,814	8.14 %	4,813,215,069 JPY	7.40 %
140-Dealer	11,425	33.06 %	20,791,624,040 JPY	31.95 %
150	11,108	32.15 %	27,048,835,283 JPY	41.56 %
151	877	2.54 %	2,556,997,742 JPY	3.93 %
Total	34,555	100.00 %	65,083,487,628 JPY	100.00 %

Credit Type

Credit Type	Number of Loans	Percentage of Loans	Outstanding Discounted Principal Balance	Percentage of Balance
Balloon Type Loan	26,224	75.89 %	55,210,672,134 JPY	84.83 %
Equal Instalment Type Loan	8,331	24.11 %	9,872,815,494 JPY	15.17 %
Total	34,555	100.00 %	65,083,487,628 JPY	100.00 %

Distribution by RV

Loan Type	Number of Loans	Percentage of Balance	Outstanding Discounted Principal Balance
100/101/105/106	8,331	15.17 %	9,872,815,494 JPY
140-VFJ (excl. balloon)		3.58 %	2,331,356,419 JPY
140-VFJ (balloon)		3.81 %	2,481,858,650 JPY
140-VFJ	2,814	7.40 %	4,813,215,069 JPY
140-Dealer (excl. balloon)		15.90 %	10,350,513,676 JPY
140-Dealer (balloon)		16.04 %	10,441,110,364 JPY
140-Dealer	11,425	31.95 %	20,791,624,040 JPY
150 (excl. balloon)		20.14 %	13,110,382,444 JPY
150 (balloon)		21.42 %	13,938,452,839 JPY
150	11,108	41.56 %	27,048,835,283 JPY
151 (excl. balloon)		1.45 %	944,160,904 JPY
151 (balloon)		2.48 %	1,612,836,838 JPY
151	877	3.93 %	2,556,997,742 JPY
Total	34,555	100.00 %	65,083,487,628 JPY

Type of Payment Portion	Percentage of Balance	Outstanding Discounted Principal Balance
Monthly Installment Portion	56.25 %	36,609,228,937 JPY
Balloon Portion	43.75 %	28,474,258,691 JPY
Total	100.00 %	65,083,487,628 JPY

Distribution by Brand New and Used
Audi

New or Used	Number of Loans	Percentage of Loans	Outstanding Discounted Principal Balance	Percentage of Balance
New	8,813	70.63 %	24,006,132,999 JPY	77.97 %
Used	3,664	29.37 %	6,783,981,049 JPY	22.03 %
Total	12,477	100.00 %	30,790,114,048 JPY	100.00 %

Bentley

New or Used	Number of Loans	Percentage of Loans	Outstanding Discounted Principal Balance	Percentage of Balance
New	14	73.68 %	80,135,212 JPY	77.73 %
Used	5	26.32 %	22,953,736 JPY	22.27 %
Total	19	100.00 %	103,088,948 JPY	100.00 %

Lamborghini

New or Used	Number of Loans	Percentage of Loans	Outstanding Discounted Principal Balance	Percentage of Balance
New	1	20.00 %	5,345,786 JPY	19.31 %
Used	4	80.00 %	22,335,294 JPY	80.69 %
Total	5	100.00 %	27,681,080 JPY	100.00 %

VW

New or Used	Number of Loans	Percentage of Loans	Outstanding Discounted Principal Balance	Percentage of Balance
New	16,039	72.82 %	27,828,511,685 JPY	81.53 %
Used	5,986	27.18 %	6,303,987,757 JPY	18.47 %
Total	22,025	100.00 %	34,132,499,442 JPY	100.00 %

OTHER

New or Used	Number of Loans	Percentage of Loans	Outstanding Discounted Principal Balance	Percentage of Balance
New	1	3.45 %	1,317,013 JPY	4.37 %
Used	28	96.55 %	28,787,097 JPY	95.63 %
Total	29	100.00 %	30,104,110 JPY	100.00 %

Distribution by Customer Type**Customer Type**

Customer Type	Number of Loans	Percentage of Loans	Outstanding Discounted Principal Balance	Percentage of Balance
Retail	31,041	89.83 %	55,706,243,985 JPY	85.59 %
Corporate	3,514	10.17 %	9,377,243,643 JPY	14.41 %
Total	34,555	100.00 %	65,083,487,628 JPY	100.00 %

Distribution by Outstanding Discounted Principal Balance

Outstanding Discounted Principal Balance	Number of Loans	Percentage of Loans	Outstanding Discounted Principal Balance	Percentage of Balance
<= 500,000 JPY	2,493	7.21 %	747,114,384 JPY	1.15 %
500,001 JPY - 1,000,000 JPY	4,975	14.40 %	3,797,240,850 JPY	5.83 %
1,000,001 JPY - 1,500,000 JPY	6,766	19.58 %	8,504,715,702 JPY	13.07 %
1,500,001 JPY - 2,000,000 JPY	7,185	20.79 %	12,540,709,657 JPY	19.27 %
2,000,001 JPY - 2,500,000 JPY	5,264	15.23 %	11,743,691,180 JPY	18.04 %
2,500,001 JPY - 3,000,000 JPY	3,178	9.20 %	8,673,396,560 JPY	13.33 %
3,000,001 JPY - 3,500,000 JPY	1,854	5.37 %	5,989,105,118 JPY	9.20 %
3,500,001 JPY - 4,000,000 JPY	1,057	3.06 %	3,941,016,356 JPY	6.06 %
4,000,001 JPY - 4,500,000 JPY	643	1.86 %	2,719,178,068 JPY	4.18 %
4,500,001 JPY - 5,000,000 JPY	411	1.19 %	1,941,047,365 JPY	2.98 %
5,000,001 JPY - 6,000,000 JPY	408	1.18 %	2,211,780,443 JPY	3.40 %
6,000,001 JPY - 7,000,000 JPY	176	0.51 %	1,132,882,814 JPY	1.74 %
7,000,001 JPY - 8,000,000 JPY	90	0.26 %	666,212,298 JPY	1.02 %
8,000,001 JPY - 9,000,000 JPY	46	0.13 %	390,954,752 JPY	0.60 %
9,000,001 JPY - 10,000,000 JPY	9	0.03 %	84,442,081 JPY	0.13 %
>= 10,000,001 JPY	0	0.00 %	0 JPY	0.00 %
Total	34,555	100.00 %	65,083,487,628 JPY	100.00 %

Statistics

Minimum Outstanding Discounted Principal Balance	7,382 JPY
Maximum Outstanding Discounted Principal Balance	9,815,563 JPY
Average Outstanding Discounted Principal Balance	1,883,475 JPY

Distribution by Original Principal Amount

Original Principal Balance	Number of Loans	Percentage of Loans	Outstanding Discounted Principal Balance	Percentage of Balance
<= 500,000 JPY	337	0.98 %	73,506,347 JPY	0.11 %
500,001 JPY - 1,000,000 JPY	2,513	7.27 %	1,291,154,615 JPY	1.98 %
1,000,001 JPY - 1,500,000 JPY	4,192	12.13 %	3,717,362,432 JPY	5.71 %
1,500,001 JPY - 2,000,000 JPY	6,075	17.58 %	7,704,511,967 JPY	11.84 %
2,000,001 JPY - 2,500,000 JPY	5,712	16.53 %	9,369,012,199 JPY	14.40 %
2,500,001 JPY - 3,000,000 JPY	5,448	15.77 %	10,881,969,913 JPY	16.72 %
3,000,001 JPY - 3,500,000 JPY	3,463	10.02 %	8,195,269,967 JPY	12.59 %
3,500,001 JPY - 4,000,000 JPY	2,365	6.84 %	6,459,730,752 JPY	9.93 %
4,000,001 JPY - 4,500,000 JPY	1,337	3.87 %	4,172,445,163 JPY	6.41 %
4,500,001 JPY - 5,000,000 JPY	1,034	2.99 %	3,540,518,976 JPY	5.44 %
5,000,001 JPY - 6,000,000 JPY	995	2.88 %	3,979,324,133 JPY	6.11 %
6,000,001 JPY - 7,000,000 JPY	521	1.51 %	2,366,042,081 JPY	3.64 %
7,000,001 JPY - 8,000,000 JPY	253	0.73 %	1,353,119,406 JPY	2.08 %
8,000,001 JPY - 9,000,000 JPY	114	0.33 %	667,550,615 JPY	1.03 %
9,000,001 JPY - 10,000,000 JPY	83	0.24 %	546,590,000 JPY	0.84 %
>= 10,000,001 JPY	113	0.33 %	765,379,062 JPY	1.18 %
Total	34,555	100.00 %	65,083,487,628 JPY	100.00 %

Statistics

Minimum Original Principal Balance	100,000 JPY
Maximum Original Principal Balance	25,500,000 JPY
Average Original Principal Balance	2,649,628 JPY

Distribution by Interest Rate paid by the Obligor

Interest Rate paid by the Obligor	Number of Loans	Percentage of Loans	Outstanding Discounted Principal Balance	Percentage of Balance
< 0.900 %	4,521	13.08 %	9,957,172,873 JPY	15.30 %
0.900 % < 1.500 %	6,651	19.25 %	14,328,628,990 JPY	22.02 %
1.500 % < 2.000 %	7,666	22.18 %	15,703,400,378 JPY	24.13 %
2.000 % < 2.500 %	518	1.50 %	737,593,766 JPY	1.13 %
2.500 % < 3.000 %	7,629	22.08 %	13,762,842,413 JPY	21.15 %
3.000 % < 3.500 %	1,179	3.41 %	1,172,775,725 JPY	1.80 %
3.500 % < 4.000 %	6,266	18.13 %	9,223,092,467 JPY	14.17 %
4.000 % < 4.500 %	119	0.34 %	195,857,197 JPY	0.30 %
4.500 % < 5.000 %	6	0.02 %	2,123,819 JPY	0.00 %
5.000 % or more	0	0.00 %	0 JPY	0.00 %
Total	34,555	100.00 %	65,083,487,628 JPY	100.00 %

Statistics	
Minimum Interest Rate	0.00 %
Maximum Interest Rate	4.79 %
Weighted Average Interest Rate	1.96 %

Distribution by Original Term

Length of Original Term (months)	Number of Loans	Percentage of Loans	Outstanding Discounted Principal Balance	Percentage of Balance
6 - 12	119	0.34 %	33,573,863 JPY	0.05 %
13 - 18	88	0.25 %	30,027,551 JPY	0.05 %
19 - 24	1,315	3.81 %	795,287,275 JPY	1.22 %
25 - 30	142	0.41 %	87,238,557 JPY	0.13 %
31 - 36	17,881	51.75 %	36,114,190,346 JPY	55.49 %
37 - 42	75	0.22 %	75,338,326 JPY	0.12 %
43 - 48	1,501	4.34 %	1,996,705,775 JPY	3.07 %
49 - 54	36	0.10 %	39,791,878 JPY	0.06 %
55 - 60	12,248	35.44 %	23,461,203,797 JPY	36.05 %
61 - 66	23	0.07 %	44,812,896 JPY	0.07 %
67 - 72	887	2.57 %	1,771,220,807 JPY	2.72 %
73 - 84	240	0.69 %	634,096,557 JPY	0.97 %
Total	34,555	100.00 %	65,083,487,628 JPY	100.00 %

Statistics	
Minimum Original Term in months	6
Maximum Original Term in months	84
Weighted Average Original Term in months	46.33

Distribution by Remaining Term

Length of Remaining Term (months)	Number of Loans	Percentage of Loans	Outstanding Discounted Principal Balance	Percentage of Balance
<= 12	5,097	14.75 %	5,511,239,197 JPY	8.47 %
13 - 18	4,582	13.26 %	7,858,696,805 JPY	12.07 %
19 - 24	7,722	22.35 %	15,059,557,202 JPY	23.14 %
25 - 30	6,054	17.52 %	13,124,259,514 JPY	20.17 %
31 - 36	3,069	8.88 %	5,521,831,922 JPY	8.48 %
37 - 42	2,332	6.75 %	4,503,170,040 JPY	6.92 %
43 - 48	2,367	6.85 %	5,152,557,436 JPY	7.92 %
49 - 54	2,394	6.93 %	5,901,710,238 JPY	9.07 %
55 - 60	633	1.83 %	1,586,543,607 JPY	2.44 %
61 - 66	179	0.52 %	476,674,017 JPY	0.73 %
67 - 72	66	0.19 %	197,795,246 JPY	0.30 %
73 - 84	60	0.17 %	189,452,404 JPY	0.29 %
Total	34,555	100.00 %	65,083,487,628 JPY	100.00 %

Statistics	
Minimum Remaining Term in months	1
Maximum Remaining Term in months	79
Weighted Average Remaining Term in months	29.22

Distribution by Seasoning

Seasoning (months)	Number of Loans	Percentage of Loans	Outstanding Discounted Principal Balance	Percentage of Balance
<= 12	10,685	30.92 %	23,697,683,750 JPY	36.41 %
13 - 18	9,718	28.12 %	19,142,230,302 JPY	29.41 %
19 - 24	5,354	15.49 %	9,853,337,419 JPY	15.14 %
25 - 30	4,449	12.88 %	7,202,497,933 JPY	11.07 %
31 - 36	2,148	6.22 %	2,936,241,783 JPY	4.51 %
37 - 42	904	2.62 %	1,127,535,632 JPY	1.73 %
43 - 48	468	1.35 %	509,441,045 JPY	0.78 %
49 - 54	428	1.24 %	375,743,622 JPY	0.58 %
55 - 60	381	1.10 %	233,049,320 JPY	0.36 %
61 - 66	11	0.03 %	4,067,929 JPY	0.01 %
67 - 72	8	0.02 %	1,381,653 JPY	0.00 %
73 - 84	1	0.00 %	277,240 JPY	0.00 %
Total	34,555	100.00 %	65,083,487,628 JPY	100.00 %

Statistics	
Minimum Seasoning in months	2
Maximum Seasoning in months	78
Weighted Average Seasoning in months	17.11

Distribution by Type of Car
Type of Car

Type of Car	Number of Loans	Percentage of Loans	Outstanding Discounted Principal Balance	Percentage of Balance
New	24,868	71.97 %	51,921,442,695 JPY	79.78 %
Used	9,687	28.03 %	13,162,044,933 JPY	20.22 %
Total	34,555	100.00 %	65,083,487,628 JPY	100.00 %

Type of Car: Only Balloon Loans

Type of Car	Number of Loans	Percentage of Loans	Outstanding Discounted Principal Balance	Percentage of Balance
New	22,143	84.44 %	48,216,884,056 JPY	87.33 %
Used	4,081	15.56 %	6,993,788,078 JPY	12.67 %
Total	26,224	100.00 %	55,210,672,134 JPY	100.00 %

Type of Car: Only Equal Instalment Loans

Type of Car	Number of Loans	Percentage of Loans	Outstanding Discounted Principal Balance	Percentage of Balance
New	2,725	32.71 %	3,704,558,639 JPY	37.52 %
Used	5,606	67.29 %	6,168,256,855 JPY	62.48 %
Total	8,331	100.00 %	9,872,815,494 JPY	100.00 %

Distribution by Brand and Model

Make	Model	Number of Loans	Percentage of Loans	Outstanding Discounted Principal Balance	Percentage of Balance
Audi	A1	1,235	3.57 %	1,824,558,323 JPY	2.80 %
	A3	2,940	8.51 %	5,777,036,510 JPY	8.88 %
	A4	2,570	7.44 %	5,780,562,525 JPY	8.88 %
	A5	736	2.13 %	2,000,140,171 JPY	3.07 %
	A6	1,111	3.22 %	3,344,307,068 JPY	5.14 %
	A7	290	0.84 %	1,216,561,864 JPY	1.87 %
	A8	132	0.38 %	614,341,759 JPY	0.94 %
	S1	116	0.34 %	296,039,996 JPY	0.45 %
	S3	473	1.37 %	1,430,802,226 JPY	2.20 %
	S4	118	0.34 %	400,180,908 JPY	0.61 %
	S5	74	0.21 %	284,412,328 JPY	0.44 %
	S6	33	0.10 %	151,428,837 JPY	0.23 %
	S7	33	0.10 %	178,609,268 JPY	0.27 %
	S8	25	0.07 %	141,148,072 JPY	0.22 %
	RS3	4	0.01 %	26,557,258 JPY	0.04 %
	RS4	20	0.06 %	90,604,065 JPY	0.14 %
	RS5	16	0.05 %	86,823,460 JPY	0.13 %
	RS6	18	0.05 %	91,184,226 JPY	0.14 %
	RS7	7	0.02 %	43,345,417 JPY	0.07 %
	Q3	1,028	2.97 %	2,675,447,601 JPY	4.11 %
	Q5	752	2.18 %	2,444,536,796 JPY	3.76 %
	Q7	58	0.17 %	162,721,781 JPY	0.25 %
	TT	674	1.95 %	1,636,412,857 JPY	2.51 %
R8	14	0.04 %	92,350,732 JPY	0.14 %	
AUDI OTHERS	0	0.00 %	0 JPY	0.00 %	
	Subtotal	12,477	36.11 %	30,790,114,048 JPY	47.31 %
Bentley	ARNAGE	1	0.00 %	1,453,422 JPY	0.00 %
	AZURE	0	0.00 %	0 JPY	0.00 %
	CONTINENTAL	17	0.05 %	92,124,738 JPY	0.14 %
	MULSANNE	0	0.00 %	0 JPY	0.00 %
	FLYING SPUR	1	0.00 %	9,510,788 JPY	0.01 %
	BENTLEY	0	0.00 %	0 JPY	0.00 %
		Subtotal	19	0.05 %	103,088,948 JPY
Lamborghini	AVENTADOR	0	0.00 %	0 JPY	0.00 %
	DIABLO	0	0.00 %	0 JPY	0.00 %
	GALLARDO	5	0.01 %	27,681,080 JPY	0.04 %
	MULCIELAGO	0	0.00 %	0 JPY	0.00 %
	LAMBORGHINI	0	0.00 %	0 JPY	0.00 %
	OTHERS	0	0.00 %	0 JPY	0.00 %
	Subtotal	5	0.01 %	27,681,080 JPY	0.04 %
VW	BEETLE	2,518	7.29 %	4,127,025,171 JPY	6.34 %
	BORA	0	0.00 %	0 JPY	0.00 %
	EOS	9	0.03 %	5,156,550 JPY	0.01 %
	GOLF	8,777	25.40 %	14,584,209,148 JPY	22.41 %
	JETTA	28	0.08 %	15,812,521 JPY	0.02 %
	LUPO	0	0.00 %	0 JPY	0.00 %
	PASSAT	1,482	4.29 %	2,918,162,893 JPY	4.48 %
	POLO	4,453	12.89 %	5,593,409,015 JPY	8.59 %
	SCIROCCO	82	0.24 %	106,508,949 JPY	0.16 %
	SHARAN	764	2.21 %	1,561,329,666 JPY	2.40 %
	TIGUAN	725	2.10 %	1,286,696,320 JPY	1.98 %
	TOUAREG	132	0.38 %	340,805,650 JPY	0.52 %
	TOURAN	988	2.86 %	1,546,442,335 JPY	2.38 %
	UP	2,066	5.98 %	2,045,856,411 JPY	3.14 %
	VENTO	0	0.00 %	0 JPY	0.00 %
	VW OTHERS	1	0.00 %	1,084,813 JPY	0.00 %
		Subtotal	22,025	63.74 %	34,132,499,442 JPY
Non VW Group Vehicles		29	0.08 %	30,104,110 JPY	0.05 %
	Subtotal	29	0.08 %	30,104,110 JPY	0.05 %
	Total	34,555	100.00 %	65,083,487,628 JPY	100.00 %

Geographic Distribution by Prefecture

Prefecture	Number of Loans	Percentage of Loans	Outstanding Discounted Principal Balance	Percentage of Balance
Tokyo	5,271	15.25 %	11,209,150,272 JPY	17.22 %
Kanagawa	3,471	10.04 %	6,752,406,361 JPY	10.37 %
Aichi	2,517	7.28 %	4,592,057,624 JPY	7.06 %
Osaka	2,108	6.10 %	4,179,526,076 JPY	6.42 %
Saitama	2,145	6.21 %	3,957,920,103 JPY	6.08 %
Hyogo	1,534	4.44 %	2,881,618,781 JPY	4.43 %
Hokkaido	1,362	3.94 %	2,870,117,280 JPY	4.41 %
Fukuoka	1,361	3.94 %	2,635,206,128 JPY	4.05 %
Chiba	1,414	4.09 %	2,564,889,279 JPY	3.94 %
Shizuoka	1,012	2.93 %	1,781,372,998 JPY	2.74 %
Ibaraki	1,038	3.00 %	1,751,932,326 JPY	2.69 %
Hiroshima	794	2.30 %	1,377,627,558 JPY	2.12 %
Kyoto	663	1.92 %	1,288,020,835 JPY	1.98 %
Tochigi	664	1.92 %	1,187,651,120 JPY	1.82 %
Okayama	606	1.75 %	1,131,378,176 JPY	1.74 %
Gunma	683	1.98 %	1,099,326,324 JPY	1.69 %
Miyagi	621	1.80 %	1,034,506,792 JPY	1.59 %
Mie	497	1.44 %	889,685,246 JPY	1.37 %
Gifu	518	1.50 %	871,641,344 JPY	1.34 %
Nagano	500	1.45 %	835,244,311 JPY	1.28 %
Niigata	385	1.11 %	629,084,876 JPY	0.97 %
Fukushima	351	1.02 %	620,969,570 JPY	0.95 %
Nara	321	0.93 %	606,021,712 JPY	0.93 %
Yamaguchi	333	0.96 %	585,158,327 JPY	0.90 %
Shiga	290	0.84 %	527,654,280 JPY	0.81 %
Kagawa	263	0.76 %	511,558,629 JPY	0.79 %
Oita	259	0.75 %	471,050,011 JPY	0.72 %
Fukui	248	0.72 %	465,374,603 JPY	0.72 %
Ishikawa	258	0.75 %	438,933,547 JPY	0.67 %
Kagoshima	236	0.68 %	425,230,966 JPY	0.65 %
Kumamoto	246	0.71 %	420,938,089 JPY	0.65 %
Yamanashi	243	0.70 %	420,103,912 JPY	0.65 %
Toyama	249	0.72 %	412,616,788 JPY	0.63 %
Yamagata	247	0.71 %	408,411,130 JPY	0.63 %
Wakayama	213	0.62 %	396,517,016 JPY	0.61 %
Tokushima	172	0.50 %	306,208,508 JPY	0.47 %
Miyazaki	162	0.47 %	292,623,959 JPY	0.45 %
Nagasaki	155	0.45 %	286,276,446 JPY	0.44 %
Iwate	152	0.44 %	270,084,836 JPY	0.41 %
Aomori	152	0.44 %	267,166,574 JPY	0.41 %
Ehime	184	0.53 %	259,139,304 JPY	0.40 %
Shimane	142	0.41 %	249,234,920 JPY	0.38 %
Akita	131	0.38 %	248,401,633 JPY	0.38 %
Tottori	136	0.39 %	245,355,112 JPY	0.38 %
Saga	117	0.34 %	204,504,865 JPY	0.31 %
Okinawa	68	0.20 %	124,119,636 JPY	0.19 %
Kouchi	63	0.18 %	99,469,445 JPY	0.15 %
Total	34,555	100.00 %	65,083,487,628 JPY	100.00 %

Distribution by Obligor Concentration

Distribution of Loan Contracts and Vehicles per Obligor

Contract Concentration	Number of Customers	Percentage of Customers	Number of Loans	Percentage of Loans	Outstanding Discounted Principal Balance	Percentage of Balance
1	33,461	97.32 %	33,461	96.83 %	62,619,246,480 JPY	96.21 %
2	840	2.44 %	992	2.87 %	2,197,390,942 JPY	3.38 %
3	67	0.19 %	80	0.23 %	205,449,464 JPY	0.32 %
4	9	0.03 %	13	0.04 %	40,236,889 JPY	0.06 %
5	3	0.01 %	6	0.02 %	15,766,618 JPY	0.02 %
6 - 10	1	0.00 %	3	0.01 %	5,397,235 JPY	0.01 %
11 or more	0	0.00 %	0	0.00 %	0 JPY	0.00 %
Total	34,381	100.00 %	34,555	100.00 %	65,083,487,628 JPY	100.00 %

Top 20 Obligor

Number	Number of Contracts	Outstanding Discounted Principal Balance	Percentage of Balance
1	2	14,079,431 JPY	0.02 %
2	2	11,959,539 JPY	0.02 %
3	2	11,616,167 JPY	0.02 %
4	2	11,269,193 JPY	0.02 %
5	2	10,475,831 JPY	0.02 %
6	2	10,260,703 JPY	0.02 %
7	2	10,035,890 JPY	0.02 %
8	3	10,016,867 JPY	0.02 %
9	2	9,988,122 JPY	0.02 %
10	1	9,815,563 JPY	0.02 %
11	2	9,803,841 JPY	0.02 %
12	1	9,566,049 JPY	0.01 %
13	1	9,510,788 JPY	0.01 %
14	1	9,438,929 JPY	0.01 %
15	1	9,349,928 JPY	0.01 %
16	2	9,339,661 JPY	0.01 %
17	1	9,289,736 JPY	0.01 %
18	1	9,222,449 JPY	0.01 %
19	2	9,221,917 JPY	0.01 %
20	1	9,202,302 JPY	0.01 %
Total 1 -20	33	203,462,906 JPY	0.31 %

Remarks:

Figures above are calculated based on each of the Sub-Servicers respectively and not across both of the Sub-Servicers.

Distribution by Contract Start Month

Origination Month	Number of Loans	Percentage of Loans	Outstanding Discounted Principal Balance	Percentage of Balance
12.2009	1	0.00 %	277,240 JPY	0.00 %
01.2010	0	0.00 %	0 JPY	0.00 %
02.2010	0	0.00 %	0 JPY	0.00 %
03.2010	0	0.00 %	0 JPY	0.00 %
04.2010	0	0.00 %	0 JPY	0.00 %
05.2010	0	0.00 %	0 JPY	0.00 %
06.2010	0	0.00 %	0 JPY	0.00 %
07.2010	0	0.00 %	0 JPY	0.00 %
08.2010	0	0.00 %	0 JPY	0.00 %
09.2010	3	0.01 %	403,249 JPY	0.00 %
10.2010	5	0.01 %	978,404 JPY	0.00 %
11.2010	0	0.00 %	0 JPY	0.00 %
12.2010	2	0.01 %	512,249 JPY	0.00 %
01.2011	2	0.01 %	1,164,932 JPY	0.00 %
02.2011	1	0.00 %	339,727 JPY	0.00 %
03.2011	5	0.01 %	1,763,282 JPY	0.00 %
04.2011	0	0.00 %	0 JPY	0.00 %
05.2011	1	0.00 %	287,739 JPY	0.00 %
06.2011	2	0.01 %	1,252,336 JPY	0.00 %
07.2011	38	0.11 %	26,251,836 JPY	0.04 %
08.2011	49	0.14 %	32,652,346 JPY	0.05 %
09.2011	117	0.34 %	70,130,908 JPY	0.11 %
10.2011	76	0.22 %	39,765,441 JPY	0.06 %
11.2011	99	0.29 %	62,996,453 JPY	0.10 %
12.2011	109	0.32 %	78,054,625 JPY	0.12 %
01.2012	42	0.12 %	32,056,635 JPY	0.05 %
02.2012	68	0.20 %	58,363,353 JPY	0.09 %
03.2012	106	0.31 %	102,637,232 JPY	0.16 %
04.2012	41	0.12 %	39,890,145 JPY	0.06 %
05.2012	62	0.18 %	64,741,632 JPY	0.10 %
06.2012	80	0.23 %	77,592,892 JPY	0.12 %
07.2012	64	0.19 %	67,410,296 JPY	0.10 %
08.2012	54	0.16 %	64,193,053 JPY	0.10 %
09.2012	94	0.27 %	97,321,857 JPY	0.15 %
10.2012	81	0.23 %	85,177,933 JPY	0.13 %
11.2012	95	0.27 %	117,745,014 JPY	0.18 %
12.2012	141	0.41 %	160,411,534 JPY	0.25 %
01.2013	110	0.32 %	127,245,164 JPY	0.20 %
02.2013	129	0.37 %	165,249,303 JPY	0.25 %
03.2013	198	0.57 %	254,004,581 JPY	0.39 %
04.2013	140	0.41 %	178,087,748 JPY	0.27 %
05.2013	186	0.54 %	242,537,302 JPY	0.37 %
06.2013	278	0.80 %	383,708,618 JPY	0.59 %
07.2013	314	0.91 %	391,086,402 JPY	0.60 %
08.2013	326	0.94 %	432,834,364 JPY	0.67 %
09.2013	457	1.32 %	614,134,885 JPY	0.94 %
10.2013	326	0.94 %	466,467,057 JPY	0.72 %
11.2013	447	1.29 %	648,010,457 JPY	1.00 %
12.2013	689	1.99 %	1,100,476,722 JPY	1.69 %
01.2014	599	1.73 %	861,329,357 JPY	1.32 %
02.2014	783	2.27 %	1,237,008,304 JPY	1.90 %
03.2014	1,299	3.76 %	2,115,456,533 JPY	3.25 %
04.2014	430	1.24 %	750,412,868 JPY	1.15 %
05.2014	649	1.88 %	1,137,814,149 JPY	1.75 %
06.2014	876	2.54 %	1,545,046,753 JPY	2.37 %
07.2014	743	2.15 %	1,273,109,348 JPY	1.96 %
08.2014	716	2.07 %	1,314,062,707 JPY	2.02 %
09.2014	1,217	3.52 %	2,304,801,470 JPY	3.54 %
10.2014	816	2.36 %	1,530,611,459 JPY	2.35 %
11.2014	986	2.85 %	1,885,705,682 JPY	2.90 %
12.2014	1,484	4.29 %	2,992,639,528 JPY	4.60 %
01.2015	1,246	3.61 %	2,369,472,002 JPY	3.64 %
02.2015	1,740	5.04 %	3,227,210,831 JPY	4.96 %
03.2015	2,895	8.38 %	5,628,608,888 JPY	8.65 %
04.2015	945	2.73 %	1,958,314,366 JPY	3.01 %
05.2015	1,408	4.07 %	2,965,984,687 JPY	4.56 %
06.2015	1,838	5.32 %	3,904,857,850 JPY	6.00 %
07.2015	1,364	3.95 %	2,771,018,099 JPY	4.26 %
08.2015	1,496	4.33 %	3,174,443,632 JPY	4.88 %
09.2015	2,176	6.30 %	4,982,977,657 JPY	7.66 %
10.2015	1,204	3.48 %	2,731,136,832 JPY	4.20 %
11.2015	1,412	4.09 %	3,327,685,462 JPY	5.11 %
12.2015	328	0.95 %	808,795,493 JPY	1.24 %
01.2016	287	0.83 %	666,551,932 JPY	1.02 %
02.2016	240	0.69 %	557,199,741 JPY	0.86 %
03.2016	263	0.76 %	588,821,626 JPY	0.90 %
04.2016	77	0.22 %	184,195,426 JPY	0.28 %
05.2016	0	0.00 %	0 JPY	0.00 %
06.2016	0	0.00 %	0 JPY	0.00 %
Total	34,555	100.00 %	65,083,487,628 JPY	100.00 %

Distribution by Contract End Month

Maturity Month	Number of Loans	Percentage of Loans	Outstanding Discounted Principal Balance	Percentage of Balance
07.2016	212	0.61 %	139,224,790 JPY	0.21 %
08.2016	238	0.69 %	169,708,824 JPY	0.26 %
09.2016	411	1.19 %	299,952,202 JPY	0.46 %
10.2016	282	0.82 %	198,045,083 JPY	0.30 %
11.2016	399	1.15 %	366,548,489 JPY	0.56 %
12.2016	454	1.31 %	460,576,721 JPY	0.71 %
01.2017	355	1.03 %	333,146,640 JPY	0.51 %
02.2017	509	1.47 %	532,765,602 JPY	0.82 %
03.2017	799	2.31 %	913,418,884 JPY	1.40 %
04.2017	282	0.82 %	386,601,827 JPY	0.59 %
05.2017	491	1.42 %	715,206,593 JPY	1.10 %
06.2017	665	1.92 %	996,043,542 JPY	1.53 %
07.2017	533	1.54 %	803,076,617 JPY	1.23 %
08.2017	512	1.48 %	820,106,505 JPY	1.26 %
09.2017	930	2.69 %	1,593,204,371 JPY	2.45 %
10.2017	627	1.81 %	1,031,355,418 JPY	1.58 %
11.2017	794	2.30 %	1,368,315,398 JPY	2.10 %
12.2017	1,186	3.43 %	2,242,638,496 JPY	3.45 %
01.2018	910	2.63 %	1,624,303,724 JPY	2.50 %
02.2018	1,251	3.62 %	2,326,821,998 JPY	3.58 %
03.2018	2,329	6.74 %	4,474,997,809 JPY	6.88 %
04.2018	704	2.04 %	1,408,088,533 JPY	2.16 %
05.2018	1,039	3.01 %	2,153,939,374 JPY	3.31 %
06.2018	1,489	4.31 %	3,071,405,764 JPY	4.72 %
07.2018	1,018	2.95 %	2,027,444,133 JPY	3.12 %
08.2018	1,092	3.16 %	2,271,396,408 JPY	3.49 %
09.2018	1,588	4.60 %	3,556,889,705 JPY	5.47 %
10.2018	828	2.40 %	1,866,463,616 JPY	2.87 %
11.2018	963	2.79 %	2,221,201,611 JPY	3.41 %
12.2018	565	1.64 %	1,180,864,041 JPY	1.81 %
01.2019	492	1.42 %	896,829,668 JPY	1.38 %
02.2019	608	1.76 %	1,111,042,601 JPY	1.71 %
03.2019	871	2.52 %	1,618,889,088 JPY	2.49 %
04.2019	302	0.87 %	547,054,792 JPY	0.84 %
05.2019	338	0.98 %	561,277,387 JPY	0.86 %
06.2019	458	1.33 %	786,738,386 JPY	1.21 %
07.2019	355	1.03 %	626,372,025 JPY	0.96 %
08.2019	349	1.01 %	656,067,636 JPY	1.01 %
09.2019	504	1.46 %	968,717,478 JPY	1.49 %
10.2019	354	1.02 %	680,711,993 JPY	1.05 %
11.2019	359	1.04 %	707,597,382 JPY	1.09 %
12.2019	411	1.19 %	863,703,526 JPY	1.33 %
01.2020	344	1.00 %	741,635,309 JPY	1.14 %
02.2020	436	1.26 %	892,485,679 JPY	1.37 %
03.2020	559	1.62 %	1,206,419,425 JPY	1.85 %
04.2020	274	0.79 %	593,193,009 JPY	0.91 %
05.2020	376	1.09 %	843,331,298 JPY	1.30 %
06.2020	378	1.09 %	875,492,716 JPY	1.35 %
07.2020	371	1.07 %	825,499,838 JPY	1.27 %
08.2020	419	1.21 %	1,013,362,959 JPY	1.56 %
09.2020	607	1.76 %	1,511,851,028 JPY	2.32 %
10.2020	387	1.12 %	980,656,310 JPY	1.51 %
11.2020	477	1.38 %	1,225,556,650 JPY	1.88 %
12.2020	133	0.38 %	344,783,453 JPY	0.53 %
01.2021	162	0.47 %	416,240,696 JPY	0.64 %
02.2021	137	0.40 %	345,449,969 JPY	0.53 %
03.2021	166	0.48 %	427,059,850 JPY	0.66 %
04.2021	57	0.16 %	147,949,103 JPY	0.23 %
05.2021	55	0.16 %	127,812,806 JPY	0.20 %
06.2021	56	0.16 %	122,031,183 JPY	0.19 %
07.2021	31	0.09 %	75,801,621 JPY	0.12 %
08.2021	23	0.07 %	63,785,480 JPY	0.10 %
09.2021	42	0.12 %	106,295,488 JPY	0.16 %
10.2021	29	0.08 %	75,741,269 JPY	0.12 %
11.2021	38	0.11 %	106,627,934 JPY	0.16 %
12.2021	16	0.05 %	48,422,225 JPY	0.07 %
01.2022	15	0.04 %	37,408,523 JPY	0.06 %
02.2022	13	0.04 %	37,021,490 JPY	0.06 %
03.2022	12	0.03 %	37,624,005 JPY	0.06 %
04.2022	9	0.03 %	23,198,569 JPY	0.04 %
05.2022	4	0.01 %	12,339,283 JPY	0.02 %
06.2022	13	0.04 %	50,203,376 JPY	0.08 %
07.2022	11	0.03 %	35,224,682 JPY	0.05 %
08.2022	6	0.02 %	22,665,828 JPY	0.03 %
09.2022	18	0.05 %	46,402,448 JPY	0.07 %
10.2022	8	0.02 %	25,344,181 JPY	0.04 %
11.2022	12	0.03 %	43,744,201 JPY	0.07 %
12.2022	4	0.01 %	11,962,993 JPY	0.02 %
01.2023	1	0.00 %	4,108,071 JPY	0.01 %
Total	34,555	100.00 %	65,083,487,628 JPY	100.00 %

Distribution by Monthly Payment

Monthly Payment	Number of Loans	Percentage of Loans	Outstanding Discounted Principal Balance	Percentage of Balance
<= 10,000 JPY	1,972	5.71 %	2,299,176,020 JPY	3.53 %
10,001 JPY - 20,000 JPY	6,308	18.25 %	8,214,643,890 JPY	12.62 %
20,001 JPY - 30,000 JPY	8,900	25.76 %	13,672,172,379 JPY	21.01 %
30,001 JPY - 40,000 JPY	6,657	19.26 %	12,200,480,432 JPY	18.75 %
40,001 JPY - 50,000 JPY	3,994	11.56 %	8,509,371,432 JPY	13.07 %
50,001 JPY - 60,000 JPY	2,478	7.17 %	6,053,629,570 JPY	9.30 %
60,001 JPY - 70,000 JPY	1,358	3.93 %	3,789,323,652 JPY	5.82 %
70,001 JPY - 80,000 JPY	780	2.26 %	2,353,358,409 JPY	3.62 %
80,001 JPY - 90,000 JPY	553	1.60 %	1,707,598,238 JPY	2.62 %
90,001 JPY - 100,000 JPY	460	1.33 %	1,572,558,255 JPY	2.42 %
100,001 JPY - 110,000 JPY	283	0.82 %	1,039,288,216 JPY	1.60 %
110,001 JPY - 120,000 JPY	197	0.57 %	789,127,896 JPY	1.21 %
120,001 JPY - 130,000 JPY	137	0.40 %	598,683,660 JPY	0.92 %
130,001 JPY - 140,000 JPY	106	0.31 %	489,477,252 JPY	0.75 %
140,001 JPY - 150,000 JPY	81	0.23 %	355,390,738 JPY	0.55 %
>= 150,001 JPY	291	0.84 %	1,439,207,589 JPY	2.21 %
Total	34,555	100.00 %	65,083,487,628 JPY	100.00 %

Distribution by Bonus Payment

Bonus Payment	Number of Loans	Percentage of Loans	Outstanding Discounted Principal Balance	Percentage of Balance
No Bonus Payment	21,090	61.03 %	39,226,481,943 JPY	60.27 %
1 JPY - 25,000 JPY	254	0.74 %	342,680,543 JPY	0.53 %
25,001 JPY - 50,000 JPY	3,265	9.45 %	4,942,632,493 JPY	7.59 %
50,001 JPY - 75,000 JPY	1,144	3.31 %	1,894,968,610 JPY	2.91 %
75,001 JPY - 100,000 JPY	4,682	13.55 %	8,681,679,626 JPY	13.34 %
100,001 JPY - 125,000 JPY	597	1.73 %	1,192,035,941 JPY	1.83 %
125,001 JPY - 150,000 JPY	1,862	5.39 %	4,202,272,026 JPY	6.46 %
150,001 JPY - 175,000 JPY	210	0.61 %	488,310,825 JPY	0.75 %
175,001 JPY - 200,000 JPY	918	2.66 %	2,463,328,120 JPY	3.78 %
200,001 JPY - 225,000 JPY	70	0.20 %	186,113,272 JPY	0.29 %
225,001 JPY - 250,000 JPY	221	0.64 %	665,916,680 JPY	1.02 %
250,001 JPY - 275,000 JPY	15	0.04 %	43,505,993 JPY	0.07 %
275,001 JPY - 300,000 JPY	141	0.41 %	425,394,733 JPY	0.65 %
300,001 JPY - 325,000 JPY	10	0.03 %	35,702,496 JPY	0.05 %
325,001 JPY - 350,000 JPY	27	0.08 %	106,360,588 JPY	0.16 %
350,001 JPY - 375,000 JPY	5	0.01 %	16,274,574 JPY	0.03 %
375,001 JPY - 400,000 JPY	20	0.06 %	77,030,432 JPY	0.12 %
400,001 JPY - 425,000 JPY	1	0.00 %	5,024,765 JPY	0.01 %
425,001 JPY - 450,000 JPY	1	0.00 %	3,274,611 JPY	0.01 %
450,001 JPY - 475,000 JPY	1	0.00 %	4,738,382 JPY	0.01 %
475,001 JPY - 500,000 JPY	14	0.04 %	51,533,039 JPY	0.08 %
500,001 JPY or more	7	0.02 %	28,227,936 JPY	0.04 %
Total	34,555	100.00 %	65,083,487,628 JPY	100.00 %

Distribution by Motor Type

Motor Type	Number of Loans	Percentage of Loans	Outstanding Discounted Principal Balance	Percentage of Balance
EA 189	0	0.00 %	0 JPY	0.00 %
Other	34,555	100.00 %	65,083,487,628 JPY	100.00 %
Total	34,555	100.00 %	65,083,487,628 JPY	100.00 %

Disclaimer

This presentation contains forward-looking statements and information on the business development of the Volkswagen Group. These statements may be spoken or written and can be recognized by terms such as "expects", "anticipates", "intends", "plans", "believes", "seeks", "estimates", "will", or words with similar meaning. These statements are based on assumptions relating to the development of the economies of individual countries, and in particular of the automotive industry, which we have made on the basis of the information available to us and which we consider to be realistic at the time of going to press. The estimates given involve a degree of risk, and the actual developments may differ from those forecast.

Consequently, any unexpected fall in demand or economic stagnation in our key sales markets, such as in Western Europe (and especially Germany) or in the USA, Brazil or China, will have a corresponding impact on the development of our business. The same applies in the event of a significant shift in current exchange rates relative to the US dollar, sterling, yen, Brazilian real, Chinese renminbi and Czech koruna.

If any of these or other risks occur, or if the assumptions underlying any of these statements prove incorrect, the actual results may significantly differ from those expressed or implied by such statements.

We do not update forward-looking statements retrospectively. Such statements are valid on the date of publication and can be superceded.

This information does not constitute an offer to exchange or sell or an offer to exchange or buy any securities.