



**BMW
GROUP**



ROLLS-ROYCE
MOTOR CARS LTD

Bavarian Sky S.A., Compartment German Auto Leases 8

Monthly Investor Report - February 2025

Bavarian Sky S.A., Compartment German Auto Leases 8

Monthly Investor Report

Reporting Date:	Mar 11, 2025
Payment Date:	Mar 20, 2025
Period No.:	16
Monthly Period:	Feb, 2025
Interest Period:	Feb 20, 2025 to Mar 20, 2025 = 28 days

Index

1. Contact Information
2. Reporting Contact Details
3. Counterparty History
4. Overview Dates
5. Portfolio Information
6. Replenishment Fund / Reserves
7. Performance Data
8. Defaulted Amount & Recovery Amount
- 8.a Defaulted Amount & Recovery Amount -Lease Level Data
- 8.b Defaulted Amount & Recovery Amount -Lease Level Data (Out of Deal)
9. Outstanding Notes Balance
10. Initial Aggregate Lease Balance
- 10.a Initial Aggregate Lease Balance (Graph)
11. Aggregate Discounted Lease Balance
- 11.a Aggregate Discounted Lease Balance (Graph)
12. Lessee Concentration
13. Geographical Distribution
- 13.a Geographical Distribution (Graph)
14. Object Type
15. Fuel Type
16. CO2 Emission Classes (EPCV)
17. Delinquencies
- 17.a Delinquency Analysis
18. Seasoning
- 18.a Seasoning (Graph)
19. Remaining Term
- 19.a Remaining Term (Graph)
20. Original Term
- 20.a Original Term (Graph)
21. Vehicle Class
22. Payment Type
23. Contracts per Lessee
24. Amortisation
25. Priority of Payments
26. Transaction Costs
27. Ratings
28. Swap Information

Bavarian Sky S.A., Compartment German Auto Leases 8
Monthly Investor Report

Reporting Date:	Mar 11, 2025
Payment Date:	Mar 20, 2025
Period No.:	16
Monthly Period:	Feb, 2025
Interest Period:	Feb 20, 2025 to Mar 20, 2025 = 28 days

1. Contact Information

Issuer: **Bavarian Sky S.A.**
Acting in respect of its Compartment German Auto Leases 8
12C, rue Guillaume Kroll
L-1882 Luxembourg
Grand Duchy of Luxembourg
Attn.: The Directors
LU-BavarianSky@intertrustgroup.com
+352 26 56 31 71

Corporate Administrator: **Intertrust (Luxembourg) S.à r.l.**
28 Boulevard F.W. Raiffeisen
L-2411 Luxembourg
Luxembourg
Attn.: BUO - Capital Markets
LU-BavarianSky@intertrustgroup.com
+352 26 44 91

Originator/Servicer: **BMW Bank GmbH**
Lilienthalallee 26
80939 Munich
Germany
Attn.: ABS Servicing Team
abs.bmwgroup@bmw.de

Calculation Agent: **The Bank of New York Mellon**
160 Queen Victoria Street
EC4V 4LA London
United Kingdom
Attn.: BNYM Structured Finance Team 8
BNYM.Structured.Finance.Team.8@bnymellon.com

Bavarian Sky S.A., Compartment German Auto Leases 8
Monthly Investor Report

Reporting Date:	Mar 11, 2025
Payment Date:	Mar 20, 2025
Period No.:	16
Monthly Period:	Feb, 2025
Interest Period:	Feb 20, 2025 to Mar 20, 2025 = 28 days

1. Contact Information**Paying Agent:**

The Bank of New York Mellon
160 Queen Victoria Street
EC4V 4LA London
United Kingdom
Attn.: BNYM Structured Finance Team 8
BNYM.Structured.Finance.Team.8@bnymellon.com

Issuer Account Bank:

The Bank of New York Mellon
Friedrich-Ebert-Anlage 49, Messeturm
60327 Frankfurt am Main
Germany
Attn.: BNYM Structured Finance Team 8
BNYM.Structured.Finance.Team.8@bnymellon.com

Trustee:

BNY MELLON CORPORATE TRUSTEE SERVICES LIMITED
160 Queen Victoria Street
EC4V 4AL London
United Kingdom
Attn.: BNYM Structured Finance Team 8
BNYM.Structured.Finance.Team.8@bnymellon.com

Data Trustee:

The Bank of New York Mellon
Friedrich-Ebert-Anlage 49, Messeturm
60327 Frankfurt am Main
Germany
Attn.: BNYM Structured Finance Team 8
BNYM.Structured.Finance.Team.8@bnymellon.com

Bavarian Sky S.A., Compartment German Auto Leases 8
Monthly Investor Report

Reporting Date:	Mar 11, 2025
Payment Date:	Mar 20, 2025
Period No.:	16
Monthly Period:	Feb, 2025
Interest Period:	Feb 20, 2025 to Mar 20, 2025 = 28 days

1. Contact Information**Swap Counterparty:****Skandinaviska Enskilda Banken AB**

Kungsträdgårdsgatan 8

SE-106 40 Stockholm

Sweden

TDLegal@seb.de

Rating Agency:**DBRS Ratings GmbH**

Neue Mainzer Straße 75

60311 Frankfurt am Main

Germany

eu.abs.surveillance@dbrsmorningstar.com

FITCH RATINGS LTD

30 North Colonnade, Canary Wharf

E14 5GN London

United Kingdom

ABSsurveillance@fitchratings.com

Moody's Deutschland GmbH

An der Welle 5

60322 Frankfurt am Main

Germany

monitor.abs@moodys.com

**Bavarian Sky S.A., Compartment German Auto Leases 8**
Monthly Investor Report

Reporting Date:	Mar 11, 2025
Payment Date:	Mar 20, 2025
Period No.:	16
Monthly Period:	Feb, 2025
Interest Period:	Feb 20, 2025 to Mar 20, 2025 = 28 days

2. Reporting Contact Details**Contact for Investor Reporting:****BMW Bank GmbH**

Lilienthalallee 26

80939 Munich

Germany

Attn.: BMW Bank - ABS Servicing Team

abs.bmwgroup@bmw.de

+49-89-382-42480/-53070



Bavarian Sky S.A., Compartment German Auto Leases 8
Monthly Investor Report

Reporting Date:	Mar 11, 2025
Payment Date:	Mar 20, 2025
Period No.:	16
Monthly Period:	Feb, 2025
Interest Period:	Feb 20, 2025 to Mar 20, 2025 = 28 days

3. Counterparty History

Replacement Party to be added if applicable

Bavarian Sky S.A., Compartment German Auto Leases 8
Monthly Investor Report

Reporting Date:	Mar 11, 2025
Payment Date:	Mar 20, 2025
Period No.:	16
Monthly Period:	Feb, 2025
Interest Period:	Feb 20, 2025 to Mar 20, 2025 = 28 days

4. Overview Dates

Initial Cut-Off Date:	Oct 31, 2023	Revolving Period End Date (including):	Nov 20, 2024
Issue Date:	Nov 20, 2023	Legal Maturity Date:	Nov 20, 2031
Reporting Date:	Mar 11, 2025		
Investor Reporting Date:	Mar 18, 2025		
Interest Determination Date:	Feb 18, 2025		
Reporting Frequency:	monthly		
Monthly Period No.:	16	(since Issue Date)	
Payment Date:	Mar 20, 2025		
Next Payment Date:	Apr 22, 2025		
Monthly Period:	Feb 01, 2025	until	Feb 28, 2025

Bavarian Sky S.A., Compartment German Auto Leases 8

Monthly Investor Report

Reporting Date:	Mar 11, 2025
Payment Date:	Mar 20, 2025
Period No.:	16
Monthly Period:	Feb, 2025
Interest Period:	Feb 20, 2025 to Mar 20, 2025 = 28 days

5. Portfolio Information

	current period	prior period
Outstanding receivables (in EUR)	Aggregate Discounted Lease Balance	Aggregate Discounted Lease Balance
Beginning of period	723,146,585.68	769,189,459.26
Scheduled Principal payments	40,808,066.24	41,595,113.90
Repurchases* principal	2,625,618.42	3,954,584.53
Repurchases* number of contracts	945	1,413
Total principal collections	43,433,684.66	45,549,698.43
Total interest collections	4,159,074.00	4,423,789.01
Unpaid Interest	28,191.84	25,054.67
Defaulted Amounts	518,071.13	518,229.82
Recoveries	15,426.55	19,349.94
Additional Lease Receivables amount	0.00	0.00
End of Period	679,223,021.73	723,146,585.68
Current repurchase rate (annualised)	4.27%	6.00%

Repurchases include all contracts repurchased due to early terminations or financial changes

Bavarian Sky S.A., Compartment German Auto Leases 8
Monthly Investor Report

Reporting Date:	Mar 11, 2025
Payment Date:	Mar 20, 2025
Period No.:	16
Monthly Period:	Feb, 2025
Interest Period:	Feb 20, 2025 to Mar 20, 2025 = 28 days

6. Replenishment Fund / Reserves

Replenishment Fund	in EUR
Outstanding replenishment fund beginning of period	0.00
Interest on replenishment fund - previous period	0.00
Additional Lease Receivables	0.00
Outstanding replenishment fund end of period	0.00

Cash Reserve	in %	in EUR
Outstanding cash reserve beginning of period		9,502,900.00
Interest on cash reserve - previous period		0.00
Required cash reserve		9,502,900.00
Outstanding cash reserve end of period		9,502,900.00

Bavarian Sky S.A., Compartment German Auto Leases 8
Monthly Investor Report

Reporting Date:	Mar 11, 2025
Payment Date:	Mar 20, 2025
Period No.:	16
Monthly Period:	Feb, 2025
Interest Period:	Feb 20, 2025 to Mar 20, 2025 = 28 days

6. Replenishment Fund / Reserves (Cont')

Additional Reserves Triggers*								
Reserves	Current ratio	Trigger	Required Rating BMW AG				Trigger Breach	
			Fitch	S&P	Moody's	DBRS		
Commingling Reserve	N/A	N/A	Long Term	BBB	N/A	Baa1	BBB low	no
			Short Term	F2	N/A	P-2	N/A	
Servicing Reserve	N/A	N/A	Long Term	BBB	N/A	Baa1	BBB low	no

Additional Reserves	in EUR
Outstanding Commingling Reserve end of period	0.00
Outstanding Servicing Reserve end of period	0.00

* Breach of this trigger in conjunction with any other event as set out in the Servicing Agreement and/or the Lease Receivables Purchase Agreement will oblige BMW Bank GmbH to post additional cash collateral or change the sweep frequency (from the collections account to the issuer account) from monthly to daily.
 The Reserves will be adjusted on a monthly basis and shall be deposited in the Issuer Account and exclusively reserved to cover risks.

Bavarian Sky S.A., Compartment German Auto Leases 8

Monthly Investor Report

Reporting Date:	Mar 11, 2025
Payment Date:	Mar 20, 2025
Period No.:	16
Monthly Period:	Feb, 2025
Interest Period:	Feb 20, 2025 to Mar 20, 2025 = 28 days

7. Performance Data

Aggregate outstanding notes balance

Beginning of period in EUR	717,548,695.61
End of period in EUR	672,048,303.56

Ratios	in EUR	in %
31- 60 days past due		
31- 60 days past due period before previous period	1,506,963.18	0.20
31- 60 days past due previous period	1,120,020.27	0.15
31- 60 days past due current period	1,087,863.55	0.16
61- 90 days past due		
61- 90 days past due period before previous period	772,038.35	0.10
61- 90 days past due previous period	1,012,930.85	0.14
61- 90 days past due current period	783,751.81	0.12

Performance data	
Number of contracts being 31 - 60 days delinquent	95
Number of contracts being 61 - 90 days delinquent	57
Balance in EUR of contracts being 31 - 60 days delinquent	1,087,863.55
Balance in EUR of contracts being 61 - 90 days delinquent	783,751.81
Defaulted amounts in EUR	518,071.13
Cumulative defaulted amounts in EUR	4,720,435.58
Recoveries in EUR	15,426.55
Cumulative recoveries in EUR	89,645.33

Bavarian Sky S.A., Compartment German Auto Leases 8

Monthly Investor Report

Reporting Date: Mar 11, 2025
 Payment Date: Mar 20, 2025
 Period No.: 16
 Monthly Period: Feb, 2025
 Interest Period: Feb 20, 2025 to Mar 20, 2025
 = 28 days

8. Defaulted Amount & Recovery Amount

Collection Period		Number of Defaulted Agreements in Collection Period	Defaulted Amount in Collection Period	Aggregate Defaulted Amount Since Initial Cut-Off Date	Number of Tolerance Write-Off's*	Tolerance Write-Off Amount*	Aggregate Tolerance Write-Off Amount Since Initial Cut-Off Date *	Purchased Amount of New Receivables	Aggregate Amount of Purchased Receivables	Cum. Default Ratio (in % of Aggr. Amount of Purch. Rec.)	Recovery	Recovery Total	Recovery Total (in % of Aggr. Defaulted Amount)
Oct - 23	1	0	n/a	n/a	n/a	n/a	n/a	863,899,907.09	863,899,907.09	n/a	n/a	n/a	n/a
Nov - 23	2	0	0.00	0.00	0	0.00	0.00	25,083,927.35	888,983,834.44	0.00%	0.00	0.00	0.00%
Dec - 23	3	0	0.00	0.00	0	0.00	0.00	26,205,763.97	915,189,598.41	0.00%	0.00	0.00	0.00%
Jan - 24	4	0	0.00	0.00	0	0.00	0.00	63,155,059.17	978,344,657.58	0.00%	0.00	0.00	0.00%
Feb - 24	5	26	764.16	764.16	24	141.93	141.93	40,624,438.35	1,018,969,095.93	0.00%	0.00	0.00	0.00%
Mar - 24	6	21	19,626.01	20,390.17	15	0.15	142.08	41,022,904.82	1,059,992,000.75	0.00%	0.00	0.00	0.00%
Apr - 24	7	60	45,588.54	65,978.71	16	0.16	142.24	41,374,606.61	1,101,366,607.36	0.01%	4,247.57	4,247.57	6.44%
May - 24	8	38	282,806.68	348,785.39	7	0.07	142.31	41,636,357.56	1,143,002,964.92	0.03%	0.00	4,247.57	1.22%
June - 24	9	55	541,700.22	890,485.61	18	0.18	142.49	43,529,833.20	1,186,532,798.12	0.08%	4,961.71	9,209.28	1.03%
July - 24	10	63	544,078.59	1,434,564.20	19	6.72	149.21	44,773,388.11	1,231,306,186.23	0.12%	862.35	10,071.63	0.70%
Aug - 24	11	46	459,266.33	1,893,830.53	9	0.09	149.30	44,479,833.50	1,275,786,019.73	0.15%	12,861.59	22,933.22	1.21%
Sept - 24	12	61	425,672.11	2,319,502.64	21	0.21	149.51	46,371,193.26	1,322,157,212.99	0.18%	7,788.73	30,721.95	1.32%
Oct - 24	13	60	609,603.41	2,929,106.05	10	0.10	149.61	47,701,266.76	1,369,858,479.75	0.21%	8,046.44	38,768.39	1.32%
Nov - 24	14	55	280,363.36	3,209,469.41	21	0.22	149.83	0.00	1,369,858,479.75	0.23%	6,042.29	44,810.68	1.40%
Dec - 24	15	78	474,665.22	3,684,134.63	32	0.32	150.15	0.00	1,369,858,479.75	0.27%	10,058.16	54,868.84	1.49%
Jan - 25	16	56	518,229.82	4,202,364.45	10	0.10	150.25	0.00	1,369,858,479.75	0.31%	19,349.94	74,218.78	1.77%
Feb - 25	17	65	518,071.13	4,720,435.58	17	9.73	159.98	0.00	1,369,858,479.75	0.34%	15,426.55	89,645.33	1.90%

* tolerance write-off amount <=10 EUR

Bavarian Sky S.A., Compartment German Auto Leases 8

Monthly Investor Report

Reporting Date: Mar 11, 2025
 Payment Date: Mar 20, 2025
 Period No.: 16
 Monthly Period: Feb, 2025
 Interest Period: Feb 20, 2025 to Mar 20, 2025
 = 28 days

8a. Defaulted Amount & Recovery Amount - Lease Level Data*

	Month / Year of Default	Month / Year of Lease Origination	Discounted Lease Balance (Initial)	Discounted Lease Balance at Default **	Recovery (Current Period)	Recovery Total	Discounted Lease Balance End of Period	Net Loss in %	Vehicle Type (New / Used)	Vehicle Class	Customer Type	Out of Deal (Month / Year)
203	Dec - 24	Apr - 21	10,873.95	5,542.59	0.00	0.00	5,542.59	50.97%	New	3 Series	Commercial	
204	Dec - 24	Nov - 21	18,965.78	13,316.60	1,468.92	1,468.92	11,847.68	62.47%	New	4 Series	Commercial	
205	Dec - 24	Jan - 22	12,160.11	5,463.10	853.45	853.45	4,609.65	37.91%	New	X7 Series	Commercial	
206	Dec - 24	Jan - 22	13,384.60	9,170.02	0.00	0.00	9,170.02	68.51%	New	X2 Series	Commercial	
207	Dec - 24	Feb - 22	6,859.18	6,263.84	0.00	0.00	6,263.84	91.32%	New	X3 Series	Commercial	
208	Dec - 24	Feb - 22	10,581.79	6,119.00	0.00	0.00	6,119.00	57.83%	New	X3 Series	Commercial	
209	Dec - 24	May - 22	10,772.72	5,641.47	0.00	0.00	5,641.47	52.37%	New	X1 Series	Commercial	
210	Dec - 24	May - 22	17,759.92	10,630.68	0.00	0.00	10,630.68	59.86%	New	X3 Series	Commercial	
211	Dec - 24	June - 22	18,627.48	13,487.07	0.00	0.00	13,487.07	72.40%	New	4 Series	Commercial	
212	Dec - 24	Sept - 22	12,101.31	999.00	0.00	999.00	0.00	0.00%	New	3 Series	Commercial	
213	Dec - 24	Oct - 22	12,044.08	8,753.29	0.00	0.00	8,753.29	72.68%	New	2 Series	Commercial	
214	Dec - 24	Oct - 22	10,698.59	7,775.43	0.00	0.00	7,775.43	72.68%	New	2 Series	Commercial	
215	Dec - 24	Dec - 22	13,900.96	11,161.08	0.00	0.00	11,161.08	80.29%	New	2 Series	Commercial	
216	Dec - 24	Dec - 22	20,024.77	7,110.25	1,079.00	3,237.00	3,873.25	19.34%	New	iX	Commercial	
217	Dec - 24	Dec - 22	16,002.74	3,830.48	999.00	2,997.00	833.48	5.21%	New	3 Series	Commercial	
218	Dec - 24	Jan - 23	20,671.19	15,757.88	0.00	0.00	15,757.88	76.23%	New	3 Series	Commercial	
219	Dec - 24	Jan - 23	16,787.95	3,883.38	1,057.99	3,173.97	709.41	4.23%	New	5 Series	Commercial	
220	Dec - 24	Feb - 23	19,361.52	12,679.89	0.00	0.00	12,679.89	65.49%	New	5 Series	Commercial	
221	Dec - 24	Mar - 23	13,372.24	10,023.59	488.96	488.96	9,534.63	71.30%	New	X1 Series	Commercial	
222	Dec - 24	Mar - 23	17,282.30	14,055.30	1,143.91	1,143.91	12,911.39	74.71%	New	4 Series	Commercial	
223	Dec - 24	Mar - 23	25,752.77	21,813.28	0.00	0.00	21,813.28	84.70%	New	3 Series	Commercial	
224	Dec - 24	Mar - 23	14,591.99	12,323.07	0.00	0.00	12,323.07	84.45%	New	MINI Hatch	Commercial	
225	Dec - 24	Apr - 23	40,666.59	33,327.94	0.00	0.00	33,327.94	81.95%	New	X7 Series	Commercial	
226	Dec - 24	Apr - 23	17,101.72	16,010.77	0.00	0.00	16,010.77	93.62%	New	X1 Series	Commercial	
227	Dec - 24	Apr - 23	22,138.85	15,256.08	0.00	0.00	15,256.08	68.91%	New	X5 Series	Commercial	
228	Dec - 24	May - 23	14,414.68	13,059.51	0.00	0.00	13,059.51	90.60%	New	2 Series	Private Individual	
229	Dec - 24	June - 23	8,773.38	7,133.84	0.00	0.00	7,133.84	81.31%	New	1 Series	Commercial	
230	Dec - 24	June - 23	17,403.09	13,038.46	0.00	0.00	13,038.46	74.92%	New	3 Series	Commercial	
231	Dec - 24	June - 23	21,681.59	9,747.60	1,016.98	3,050.94	6,696.66	30.89%	New	5 Series	Commercial	
232	Dec - 24	July - 23	25,678.59	22,756.31	0.00	0.00	22,756.31	88.62%	New	X3 Series	Commercial	
233	Dec - 24	July - 23	20,677.36	17,059.20	0.00	0.00	17,059.20	82.50%	New	3 Series	Commercial	
234	Dec - 24	Aug - 23	16,724.48	13,875.81	0.00	0.00	13,875.81	82.97%	New	MINI Hatch	Commercial	

Bavarian Sky S.A., Compartment German Auto Leases 8
Monthly Investor Report

Reporting Date: Mar 11, 2025
 Payment Date: Mar 20, 2025
 Period No.: 16
 Monthly Period: Feb, 2025
 Interest Period: Feb 20, 2025 to Mar 20, 2025
 = 28 days

8a. Defaulted Amount & Recovery Amount - Lease Level Data*

	Month / Year of Default	Month / Year of Lease Origination	Discounted Lease Balance (Initial)	Discounted Lease Balance at Default **	Recovery (Current Period)	Recovery Total	Discounted Lease Balance End of Period	Net Loss in %	Vehicle Type (New / Used)	Vehicle Class	Customer Type	Out of Deal (Month / Year)
235	Dec - 24	Aug - 23	8,131.72	7,648.77	0.00	0.00	7,648.77	94.06%	New	1 Series	Commercial	
236	Dec - 24	Sept - 23	14,724.85	13,087.72	0.00	0.00	13,087.72	88.88%	New	MINI Hatch	Commercial	
237	Dec - 24	Oct - 23	25,564.11	19,365.70	922.00	2,766.00	16,599.70	64.93%	New	3 Series	Commercial	
238	Dec - 24	Nov - 23	23,560.11	19,993.96	0.00	0.00	19,993.96	84.86%	New	3 Series	Commercial	
239	Dec - 24	Dec - 23	15,481.67	13,240.28	0.00	0.00	13,240.28	85.52%	New	X1 Series	Commercial	
240	Dec - 24	June - 24	29,159.50	29,790.46	0.00	0.00	29,790.46	102.16%	New	3 Series	Commercial	
241	Jan - 25	July - 21	8,848.19	5,304.80	0.00	0.00	5,304.80	59.95%	New	X1 Series	Commercial	
242	Jan - 25	Dec - 21	19,087.67	15,583.09	0.00	0.00	15,583.09	81.64%	New	X7 Series	Commercial	
243	Jan - 25	Mar - 22	7,519.80	1,165.78	481.23	481.23	684.55	9.10%	New	3 Series	Commercial	
244	Jan - 25	July - 22	11,822.05	7,421.05	0.00	0.00	7,421.05	62.77%	New	3 Series	Commercial	
245	Jan - 25	Sept - 22	13,878.68	10,740.85	0.00	0.00	10,740.85	77.39%	New	3 Series	Commercial	
246	Jan - 25	Oct - 22	10,902.73	6,438.71	0.00	0.00	6,438.71	59.06%	New	X1 Series	Commercial	
247	Jan - 25	Oct - 22	29,784.60	18,035.18	0.00	0.00	18,035.18	60.55%	New	X5 Series	Commercial	
248	Jan - 25	Oct - 22	15,297.06	11,012.13	0.00	0.00	11,012.13	71.99%	New	X4 Series	Commercial	
249	Jan - 25	Nov - 22	13,272.09	11,071.98	0.00	0.00	11,071.98	83.42%	New	X6 Series	Commercial	
250	Jan - 25	Nov - 22	20,765.97	17,099.48	0.00	0.00	17,099.48	82.34%	New	2 Series	Commercial	
251	Jan - 25	Dec - 22	14,349.97	10,248.19	0.00	0.00	10,248.19	71.42%	New	2 Series	Commercial	
252	Jan - 25	Dec - 22	9,242.21	5,852.89	0.00	0.00	5,852.89	63.33%	New	MINI Hatch	Commercial	
253	Jan - 25	Dec - 22	6,716.69	2,762.10	0.00	0.00	2,762.10	41.12%	New	1 Series	Commercial	
254	Jan - 25	Dec - 22	12,752.78	9,810.60	0.00	0.00	9,810.60	76.93%	New	2 Series	Commercial	
255	Jan - 25	Jan - 23	16,673.54	11,430.45	0.00	0.00	11,430.45	68.55%	New	X5 Series	Commercial	
256	Jan - 25	Feb - 23	17,558.63	15,081.96	0.00	0.00	15,081.96	85.89%	New	X7 Series	Commercial	
257	Jan - 25	Apr - 23	36,727.27	30,160.32	0.00	0.00	30,160.32	82.12%	New	4 Series	Commercial	
258	Jan - 25	Apr - 23	38,802.24	29,829.99	0.00	0.00	29,829.99	76.88%	New	X5 Series	Commercial	
259	Jan - 25	May - 23	19,067.65	15,243.48	0.00	0.00	15,243.48	79.94%	New	2 Series	Commercial	
260	Jan - 25	May - 23	19,175.44	15,629.92	0.00	0.00	15,629.92	81.51%	New	X1 Series	Commercial	
261	Jan - 25	June - 23	44,747.32	39,723.32	0.00	0.00	39,723.32	88.77%	New	X7 Series	Commercial	
262	Jan - 25	July - 23	18,196.23	12,974.97	0.00	0.00	12,974.97	71.31%	New	4 Series	Commercial	
263	Jan - 25	July - 23	22,736.59	20,143.91	0.00	0.00	20,143.91	88.60%	New	3 Series	Commercial	
264	Jan - 25	July - 23	18,717.99	13,505.92	0.00	0.00	13,505.92	72.15%	New	4 Series	Commercial	
265	Jan - 25	July - 23	21,808.67	17,226.90	0.00	0.00	17,226.90	78.99%	New	3 Series	Commercial	
266	Jan - 25	Aug - 23	25,808.17	18,634.36	0.00	0.00	18,634.36	72.20%	New	3 Series	Commercial	

Bavarian Sky S.A., Compartment German Auto Leases 8

Monthly Investor Report

Reporting Date:	Mar 11, 2025
Payment Date:	Mar 20, 2025
Period No.:	16
Monthly Period:	Feb, 2025
Interest Period:	Feb 20, 2025 to Mar 20, 2025 = 28 days

8a. Defaulted Amount & Recovery Amount - Lease Level Data*

	Month / Year of Default	Month / Year of Lease Origination	Discounted Lease Balance (Initial)	Discounted Lease Balance at Default **	Recovery (Current Period)	Recovery Total	Discounted Lease Balance End of Period	Net Loss in %	Vehicle Type (New / Used)	Vehicle Class	Customer Type	Out of Deal (Month / Year)
267	Jan - 25	Nov - 23	69,054.52	58,532.84	0.00	0.00	58,532.84	84.76%	New	7 Series	Commercial	
268	Jan - 25	Nov - 23	18,179.23	14,977.87	0.00	0.00	14,977.87	82.39%	New	4 Series	Commercial	
269	Jan - 25	Nov - 23	7,885.03	5,103.37	0.00	0.00	5,103.37	64.72%	New	X3 Series	Commercial	
270	Jan - 25	Dec - 23	50,434.78	47,636.52	0.00	0.00	47,636.52	94.45%	New	X7 Series	Commercial	
271	Feb - 25	Dec - 21	23,245.15	14,112.15	0.00	0.00	14,112.15	60.71%	New	3 Series	Commercial	
272	Feb - 25	Feb - 22	12,842.28	2,698.34	0.00	0.00	2,698.34	21.01%	New	4 Series	Commercial	
273	Feb - 25	Feb - 22	15,396.93	6,564.62	0.00	0.00	6,564.62	42.64%	New	8 Series	Commercial	
274	Feb - 25	Mar - 22	17,666.68	8,489.54	0.00	0.00	8,489.54	48.05%	New	5 Series	Commercial	
275	Feb - 25	Mar - 22	6,698.54	2,408.04	0.00	0.00	2,408.04	35.95%	New	3 Series	Commercial	
276	Feb - 25	Aug - 22	18,205.59	13,396.56	0.00	0.00	13,396.56	73.58%	New	2 Series	Commercial	
277	Feb - 25	Aug - 22	7,125.00	3,230.46	0.00	0.00	3,230.46	45.34%	New	1 Series	Commercial	
278	Feb - 25	Aug - 22	16,764.66	9,335.27	0.00	0.00	9,335.27	55.68%	New	5 Series	Commercial	
279	Feb - 25	Sept - 22	22,291.00	15,872.01	0.00	0.00	15,872.01	71.20%	New	X3 Series	Commercial	
280	Feb - 25	Sept - 22	12,602.72	7,144.04	0.00	0.00	7,144.04	56.69%	New	X3 Series	Commercial	
281	Feb - 25	Sept - 22	20,550.22	10,893.05	0.00	0.00	10,893.05	53.01%	New	iX	Commercial	
282	Feb - 25	Oct - 22	12,488.24	7,823.89	0.00	0.00	7,823.89	62.65%	New	MINI Hatch	Commercial	
283	Feb - 25	Oct - 22	10,641.06	5,316.65	0.00	0.00	5,316.65	49.96%	New	i3 Series	Commercial	
284	Feb - 25	Nov - 22	7,825.56	4,440.69	0.00	0.00	4,440.69	56.75%	New	MINI Hatch	Commercial	
285	Feb - 25	Dec - 22	21,420.81	14,057.77	0.00	0.00	14,057.77	65.63%	New	X3 Series	Commercial	
286	Feb - 25	Dec - 22	23,859.70	16,170.05	0.00	0.00	16,170.05	67.77%	New	3 Series	Private Individual	
287	Feb - 25	Mar - 23	25,314.38	20,150.89	0.00	0.00	20,150.89	79.60%	New	X1 Series	Commercial	
288	Feb - 25	Mar - 23	16,883.13	15,200.89	0.00	0.00	15,200.89	90.04%	New	5 Series	Commercial	
289	Feb - 25	Apr - 23	31,338.05	18,113.73	0.00	0.00	18,113.73	57.80%	New	X5 Series	Commercial	
290	Feb - 25	Apr - 23	24,518.25	18,059.90	0.00	0.00	18,059.90	73.66%	New	X2 Series	Commercial	
291	Feb - 25	May - 23	20,099.21	13,373.56	0.00	0.00	13,373.56	66.54%	New	X1 Series	Commercial	
292	Feb - 25	May - 23	11,941.40	8,808.92	0.00	0.00	8,808.92	73.77%	New	1 Series	Commercial	
293	Feb - 25	May - 23	25,840.00	18,132.16	0.00	0.00	18,132.16	70.17%	New	X4 Series	Commercial	
294	Feb - 25	May - 23	16,483.41	11,981.01	0.00	0.00	11,981.01	72.69%	New	1 Series	Commercial	
295	Feb - 25	May - 23	24,951.14	20,182.21	0.00	0.00	20,182.21	80.89%	New	X1 Series	Commercial	
296	Feb - 25	June - 23	40,699.58	30,842.30	0.00	0.00	30,842.30	75.78%	New	X5 Series	Commercial	
297	Feb - 25	July - 23	18,107.85	15,033.59	0.00	0.00	15,033.59	83.02%	New	X4 Series	Commercial	
298	Feb - 25	July - 23	17,878.57	14,211.13	0.00	0.00	14,211.13	79.49%	New	1 Series	Commercial	

Bavarian Sky S.A., Compartment German Auto Leases 8

Monthly Investor Report

Reporting Date:	Mar 11, 2025
Payment Date:	Mar 20, 2025
Period No.:	16
Monthly Period:	Feb, 2025
Interest Period:	Feb 20, 2025 to Mar 20, 2025 = 28 days

8a. Defaulted Amount & Recovery Amount - Lease Level Data*

	Month / Year of Default	Month / Year of Lease Origination	Discounted Lease Balance (Initial)	Discounted Lease Balance at Default **	Recovery (Current Period)	Recovery Total	Discounted Lease Balance End of Period	Net Loss in %	Vehicle Type (New / Used)	Vehicle Class	Customer Type	Out of Deal (Month / Year)
299	Feb - 25	July - 23	6,138.68	5,255.30	0.00	0.00	5,255.30	85.61%	New	2 Series	Private Individual	
300	Feb - 25	Aug - 23	33,840.31	31,469.85	0.00	0.00	31,469.85	93.00%	New	X6 Series	Commercial	
301	Feb - 25	Aug - 23	56,645.19	39,683.13	0.00	0.00	39,683.13	70.06%	New	8 Series	Commercial	
302	Feb - 25	Aug - 23	14,480.87	10,216.47	0.00	0.00	10,216.47	70.55%	New	MINI Hatch	Commercial	
303	Feb - 25	Sept - 23	35,044.77	27,200.93	0.00	0.00	27,200.93	77.62%	New	X4 Series	Commercial	
304	Feb - 25	Dec - 23	13,853.47	11,482.43	0.00	0.00	11,482.43	82.88%	New	1 Series	Commercial	
305	Feb - 25	Feb - 24	23,638.45	16,408.84	0.00	0.00	16,408.84	69.42%	Used	X3 Series	Private Individual	
306	Feb - 25	Feb - 24	17,569.19	16,947.43	0.00	0.00	16,947.43	96.46%	Used	X3 Series	Private Individual	

*Applicable only if leases have defaulted. Does not include defaulted amounts less than 10 EUR.

**This amount mostly includes proceeds from vehicle sale.

Bavarian Sky S.A., Compartment German Auto Leases 8
Monthly Investor Report

Reporting Date:	Mar 11, 2025
Payment Date:	Mar 20, 2025
Period No.:	16
Monthly Period:	Feb, 2025
Interest Period:	Feb 20, 2025 to Mar 20, 2025 = 28 days

8b. Defaulted Amount & Recovery Amount - Lease Level Data* (Out of Deal)

	Month / Year of Default	Month / Year of Lease Origination	Discounted Lease Balance (Initial)	Discounted Lease Balance at Default **	Recovery (Current Period)	Recovery Total	Discounted Lease Balance End of Period	Net Loss in %	Vehicle Type (New / Used)	Vehicle Class	Customer Type	Out of Deal (Month / Year)
154	Feb - 25	Jan - 22	13,735.39	364.36	0.00	0.00	364.36	2.65%	New	X6 Series	Commercial	Feb - 25
156	Feb - 25	Jan - 22	4,796.73	672.03	0.00	0.00	672.03	14.01%	New	X2 Series	Commercial	Feb - 25

* Applicable only if leases have defaulted. Does not include defaulted amounts less than 10 EUR.

** This amount mostly includes proceeds from vehicle sale.

*** Only contracts of the current reporting period and the previous period are displayed.

Bavarian Sky S.A., Compartment German Auto Leases 8

Monthly Investor Report

Reporting Date:	Mar 11, 2025
Payment Date:	Mar 20, 2025
Period No.:	16
Monthly Period:	Feb, 2025
Interest Period:	Feb 20, 2025 to Mar 20, 2025 = 28 days

9. Outstanding Notes Balance

1. Note Balance	All Notes	Class A	Class B	
Initial Note Information				
ISIN code		XS2701658937	XS2701659158	
Currency		EUR	EUR	
Legal final maturity		Nov 2031	Nov 2031	
Rating (Fitch Moody's S&P DBRS)		AAA Aaa N/A AAA	N/A N/A N/A N/A	
Initial notes aggregate principal outstanding balance	863,900,000.00	800,000,000.00	63,900,000.00	
Nominal amount per note (in EUR)		100,000.00	100,000.00	
Initial number of notes per class (in EUR)		8,000	639	
Current Note Information				
Notes aggregate principal outstanding balance - BoP (in EUR)	717,548,695.61	653,648,695.61	63,900,000.00	
Available distribution amount (in EUR)	57,130,488.24			
Additional purchase price	0.00			
Redemption per class (in EUR)		45,500,392.05	0.00	
Redemption per note (in EUR)		5,687.55	0.00	
Notes aggregate principal outstanding balance - EoP (in EUR)	672,048,303.56	608,148,303.56	63,900,000.00	
Current pool factor		0.76	1.00	
2. Payments to Investor per Note				
		Class A	Class B	
Interest Type		Floating Rate	Fixed Rate	
Reference Rate		1M_EURIBOR	NONE	
Actual Interest Rate		2.624%	NONE	
Spread		0.450%	0.00%	
Coupon		3.074%	3.00%	
Day count fraction		Actual/360	Actual/360	
Interest days		28 days	28 days	
Principal outstanding per note in EUR - BoP		81,706.09	100,000.00	
Principal repayment per note in EUR		5,687.55	0.00	
Principal outstanding per note in EUR - EoP		76,018.54	100,000.00	
Interest payment per Note in EUR		195.35	0.00	
3. Credit Enhancement				
	Initial Period	Initial CE	Current Period	Current CE
Class A	800,000,000.00	8.50%	608,148,303.56	11.86%
Class B	63,900,000.00	1.10%	63,900,000.00	2.46%
Cash Reserve (+ Overcollateralisation)	9,502,900.00	-	16,677,618.17	-

BMW Bank GmbH complies with the retention requirement of a material net economic interest in accordance with article 6 of the Securitisation Regulation. A minimum of 5.0% of the net economic interest will be retained on an ongoing basis in form of retention of the Class B Notes and Subordinated Loan.



**Bavarian Sky S.A., Compartment German Auto Leases 8
Monthly Investor Report**

Reporting Date:	Mar 11, 2025
Payment Date:	Mar 20, 2025
Period No.:	16
Monthly Period:	Feb, 2025
Interest Period:	Feb 20, 2025 to Mar 20, 2025 = 28 days

9. Outstanding Notes Balance (Cont')

Clean-up Call Option

If the current aggregate discounted outstanding lease balance is less than 10.00% of the initial aggregate discounted outstanding lease balance on the issue date or if all outstanding Class A notes are repaid in full, the seller will have the option under the lease receivables purchase agreement to demand from the issuer the resale of all outstanding purchased lease receivables.

Current aggregate discounted outstanding lease balance at end of period	679,223,021.73
Clean-up option exercisable	No

Bavarian Sky S.A., Compartment German Auto Leases 8
Monthly Investor Report

Reporting Date:	Mar 11, 2025
Payment Date:	Mar 20, 2025
Period No.:	16
Monthly Period:	Feb, 2025
Interest Period:	Feb 20, 2025 to Mar 20, 2025 = 28 days

10. Initial Aggregate Lease Balance

Initial Portfolio

Group in EUR	Initial Aggregate Lease Balance in EUR	Initial Aggregate Lease Balance in %	Number of Contracts	Number of Contracts in %
0,00 - 5.000,00	6,773,623.67	0.45%	1,861	2.69%
5.000,01 - 10.000,00	69,970,722.03	4.68%	8,866	12.82%
10.000,01 - 15.000,00	161,132,783.05	10.77%	12,853	18.58%
15.000,01 - 20.000,00	212,971,098.28	14.24%	12,199	17.64%
20.000,01 - 25.000,00	242,297,131.62	16.20%	10,811	15.63%
25.000,01 - 30.000,00	229,430,140.60	15.34%	8,388	12.13%
30.000,01 - 35.000,00	181,836,580.73	12.15%	5,631	8.14%
35.000,01 - 40.000,00	127,563,075.08	8.53%	3,423	4.95%
40.000,01 - 45.000,00	78,376,366.60	5.24%	1,855	2.68%
45.000,01 - 50.000,00	55,176,068.55	3.69%	1,167	1.69%
50.000,01 - 55.000,00	37,923,374.47	2.53%	725	1.05%
55.000,01 - 60.000,00	28,788,626.88	1.92%	502	0.73%
> 60.000,00	63,803,333.69	4.26%	887	1.28%
Total	1,496,042,925.25	100.00%	69,168	100.00%

WA: 21,629.12

MIN : 598.40

MAX: 128,841.60

Bavarian Sky S.A., Compartment German Auto Leases 8
Monthly Investor Report

Reporting Date:	Mar 11, 2025
Payment Date:	Mar 20, 2025
Period No.:	16
Monthly Period:	Feb, 2025
Interest Period:	Feb 20, 2025 to Mar 20, 2025 = 28 days

10. Initial Aggregate Lease Balance (Cont')

Current Portfolio:

Group in EUR	Initial Aggregate Lease Balance in EUR	Initial Aggregate Lease Balance in %	Number of Contracts	Number of Contracts in %
< 0,00	0.00	0.00%	0	0.00%
0,00 - 5.000,00	6,220,910.76	0.35%	1,626	2.05%
5.000,01 - 10.000,00	76,984,981.74	4.33%	9,689	12.24%
10.000,01 - 15.000,00	186,961,187.63	10.51%	14,977	18.91%
15.000,01 - 20.000,00	228,215,760.75	12.83%	13,097	16.54%
20.000,01 - 25.000,00	268,513,932.95	15.10%	11,960	15.10%
25.000,01 - 30.000,00	269,922,039.79	15.18%	9,858	12.45%
30.000,01 - 35.000,00	218,235,521.25	12.27%	6,761	8.54%
35.000,01 - 40.000,00	155,521,218.74	8.74%	4,172	5.27%
40.000,01 - 45.000,00	99,791,849.16	5.61%	2,361	2.98%
45.000,01 - 50.000,00	73,709,341.22	4.14%	1,559	1.97%
50.000,01 - 55.000,00	54,124,765.71	3.04%	1,034	1.31%
55.000,01 - 60.000,00	41,746,633.38	2.35%	728	0.92%
> 60.000,00	98,476,079.63	5.54%	1,368	1.73%
Total	1,778,424,222.71	100.00%	79,190	100.00%

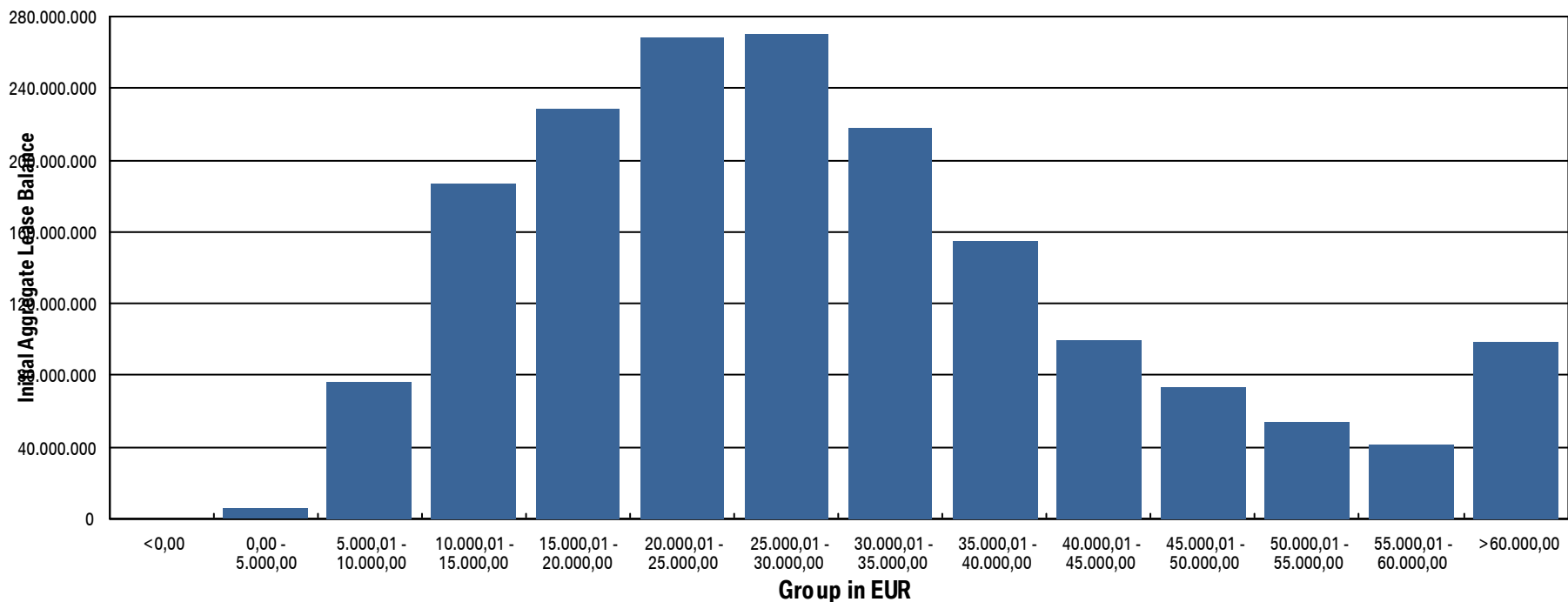
WA: 22,457.69
 MIN : 847.68
 MAX: 142,112.64

**Bavarian Sky S.A., Compartment German Auto Leases 8
Monthly Investor Report**

Reporting Date:	Mar 11, 2025
Payment Date:	Mar 20, 2025
Period No.:	16
Monthly Period:	Feb, 2025
Interest Period:	Feb 20, 2025 to Mar 20, 2025 = 28 days

10.a Initial Aggregate Lease Balance (Graph)

Current Portfolio:



Bavarian Sky S.A., Compartment German Auto Leases 8
Monthly Investor Report

Reporting Date: Mar 11, 2025
 Payment Date: Mar 20, 2025
 Period No.: 16
 Monthly Period: Feb, 2025
 Interest Period: Feb 20, 2025 to Mar 20, 2025
 = 28 days

11. Aggregate Discounted Lease Balance

Initial Portfolio

Group in EUR	Current Aggregate Discounted Lease Balance in EUR	Current Aggregate Discounted Lease Balance in %	Number of Contracts	Number of Contracts in %
0,00 - 5.000,00	46,674,779.95	5.40%	16,954	24.51%
5.000,01 - 10.000,00	127,520,577.04	14.76%	17,096	24.72%
10.000,01 - 15.000,00	158,456,993.15	18.34%	12,846	18.57%
15.000,01 - 20.000,00	158,092,203.62	18.30%	9,112	13.17%
20.000,01 - 25.000,00	137,155,627.04	15.88%	6,155	8.90%
25.000,01 - 30.000,00	89,444,822.92	10.35%	3,293	4.76%
30.000,01 - 35.000,00	49,733,312.30	5.76%	1,548	2.24%
35.000,01 - 40.000,00	33,056,327.57	3.83%	885	1.28%
40.000,01 - 45.000,00	21,492,241.68	2.49%	508	0.73%
45.000,01 - 50.000,00	14,069,948.07	1.63%	298	0.43%
50.000,01 - 55.000,00	10,260,239.31	1.19%	197	0.28%
55.000,01 - 60.000,00	5,952,387.20	0.69%	104	0.15%
> 60.000,00	11,990,447.24	1.39%	172	0.25%
Total	863,899,907.09	100.00%	69,168	100.00%

WA: 12,489.88
 MIN : 125.61
 MAX: 107,883.30

Bavarian Sky S.A., Compartment German Auto Leases 8
Monthly Investor Report

Reporting Date:	Mar 11, 2025
Payment Date:	Mar 20, 2025
Period No.:	16
Monthly Period:	Feb, 2025
Interest Period:	Feb 20, 2025 to Mar 20, 2025 = 28 days

11. Aggregate Discounted Lease Balance (Cont')

Current Portfolio:

Group in EUR	Current Aggregate Discounted Lease Balance in EUR	Current Aggregate Discounted Lease Balance in %	Number of Contracts	Number of Contracts in %
0,00 - 5.000,00	72,326,908.82	10.65%	29,564	37.33%
5.000,01 - 10.000,00	177,690,736.34	26.16%	24,424	30.84%
10.000,01 - 15.000,00	157,988,627.23	23.26%	12,916	16.31%
15.000,01 - 20.000,00	112,115,364.85	16.51%	6,536	8.25%
20.000,01 - 25.000,00	63,472,089.73	9.34%	2,866	3.62%
25.000,01 - 30.000,00	35,604,175.65	5.24%	1,306	1.65%
30.000,01 - 35.000,00	22,520,620.33	3.32%	699	0.88%
35.000,01 - 40.000,00	16,199,715.48	2.39%	435	0.55%
40.000,01 - 45.000,00	8,781,529.29	1.29%	208	0.26%
45.000,01 - 50.000,00	5,889,348.89	0.87%	125	0.16%
50.000,01 - 55.000,00	2,097,579.62	0.31%	40	0.05%
55.000,01 - 60.000,00	1,761,143.04	0.26%	31	0.04%
> 60.000,00	2,775,182.46	0.41%	40	0.05%
Total	679,223,021.73	100.00%	79,190	100.00%

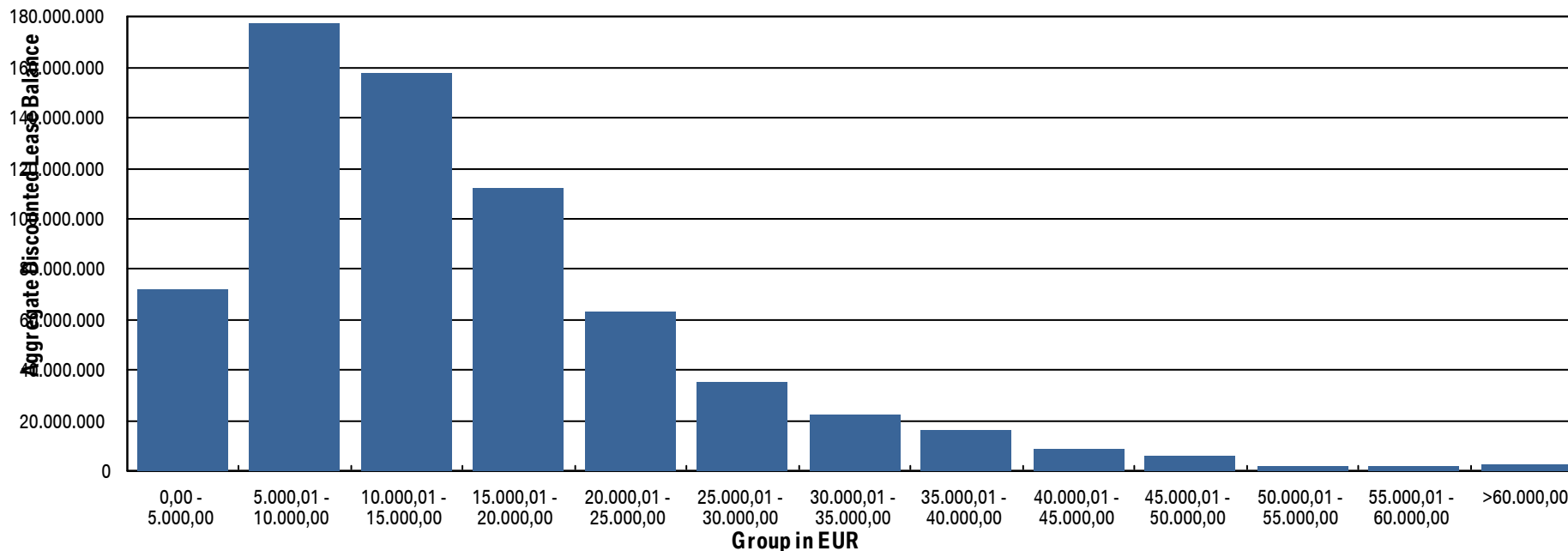
WA: 8,577.13
MIN: 0.00
MAX: 84,319.35

Bavarian Sky S.A., Compartment German Auto Leases 8
Monthly Investor Report

Reporting Date: Mar 11, 2025
 Payment Date: Mar 20, 2025
 Period No.: 16
 Monthly Period: Feb, 2025
 Interest Period: Feb 20, 2025 to Mar 20, 2025
 = 28 days

11.a Aggregate Discounted Lease Balance (Graph)

Current Portfolio:



Bavarian Sky S.A., Compartment German Auto Leases 8
Monthly Investor Report

Reporting Date:	Mar 11, 2025
Payment Date:	Mar 20, 2025
Period No.:	16
Monthly Period:	Feb, 2025
Interest Period:	Feb 20, 2025 to Mar 20, 2025 = 28 days

12. Lessee Concentration

Current Portfolio:

Lessee	Current Aggregate Discounted Lease Balance in EUR	Current Aggregate Discounted Lease Balance in %	Number of Contracts	Number of Contracts in %
1	372,076.46	0.05%	66	0.08%
2	338,531.98	0.05%	25	0.03%
3	327,622.91	0.05%	18	0.02%
4	318,708.79	0.05%	41	0.05%
5	295,490.25	0.04%	66	0.08%
6	260,250.88	0.04%	49	0.06%
7	255,494.08	0.04%	45	0.06%
8	219,454.41	0.03%	49	0.06%
9	216,151.04	0.03%	22	0.03%
10	207,663.76	0.03%	18	0.02%
11	191,632.18	0.03%	35	0.04%
12	188,283.02	0.03%	21	0.03%
13	182,359.33	0.03%	21	0.03%
14	178,707.99	0.03%	9	0.01%
15	177,707.07	0.03%	19	0.02%
16	174,511.98	0.03%	44	0.06%
17	173,511.84	0.03%	22	0.03%
18	168,316.87	0.02%	15	0.02%
19	165,436.94	0.02%	8	0.01%
20	164,568.49	0.02%	22	0.03%
Total	4,576,480.27	0.67%	615	0.78%

Total Portfolio Balance:	679,223,021.73
---------------------------------	----------------

Bavarian Sky S.A., Compartment German Auto Leases 8
Monthly Investor Report

Reporting Date: Mar 11, 2025
 Payment Date: Mar 20, 2025
 Period No.: 16
 Monthly Period: Feb, 2025
 Interest Period: Feb 20, 2025 to Mar 20, 2025
 = 28 days

13. Geographical Distribution

Initial Portfolio

Group in Region	Current Aggregate Discounted Lease Balance in EUR	Current Aggregate Discounted Lease Balance in %	Number of Contracts	Number of Contracts in %
Post Code Area 0	36,018,113.74	4.17%	2,657	3.84%
Post Code Area 1	45,841,541.04	5.31%	3,632	5.25%
Post Code Area 2	81,074,031.66	9.38%	6,357	9.19%
Post Code Area 3	71,792,602.99	8.31%	5,593	8.09%
Post Code Area 4	116,649,602.83	13.50%	9,332	13.49%
Post Code Area 5	96,671,425.90	11.19%	7,957	11.50%
Post Code Area 6	99,531,416.07	11.52%	8,270	11.96%
Post Code Area 7	107,327,218.75	12.42%	8,700	12.58%
Post Code Area 8	127,910,577.72	14.81%	10,233	14.79%
Post Code Area 9	81,083,376.39	9.39%	6,437	9.31%
Total	863,899,907.09	100.00%	69,168	100.00%

Bavarian Sky S.A., Compartment German Auto Leases 8
Monthly Investor Report

Reporting Date:	Mar 11, 2025
Payment Date:	Mar 20, 2025
Period No.:	16
Monthly Period:	Feb, 2025
Interest Period:	Feb 20, 2025 to Mar 20, 2025 = 28 days

13. Geographical Distribution (Cont')

Current Portfolio:

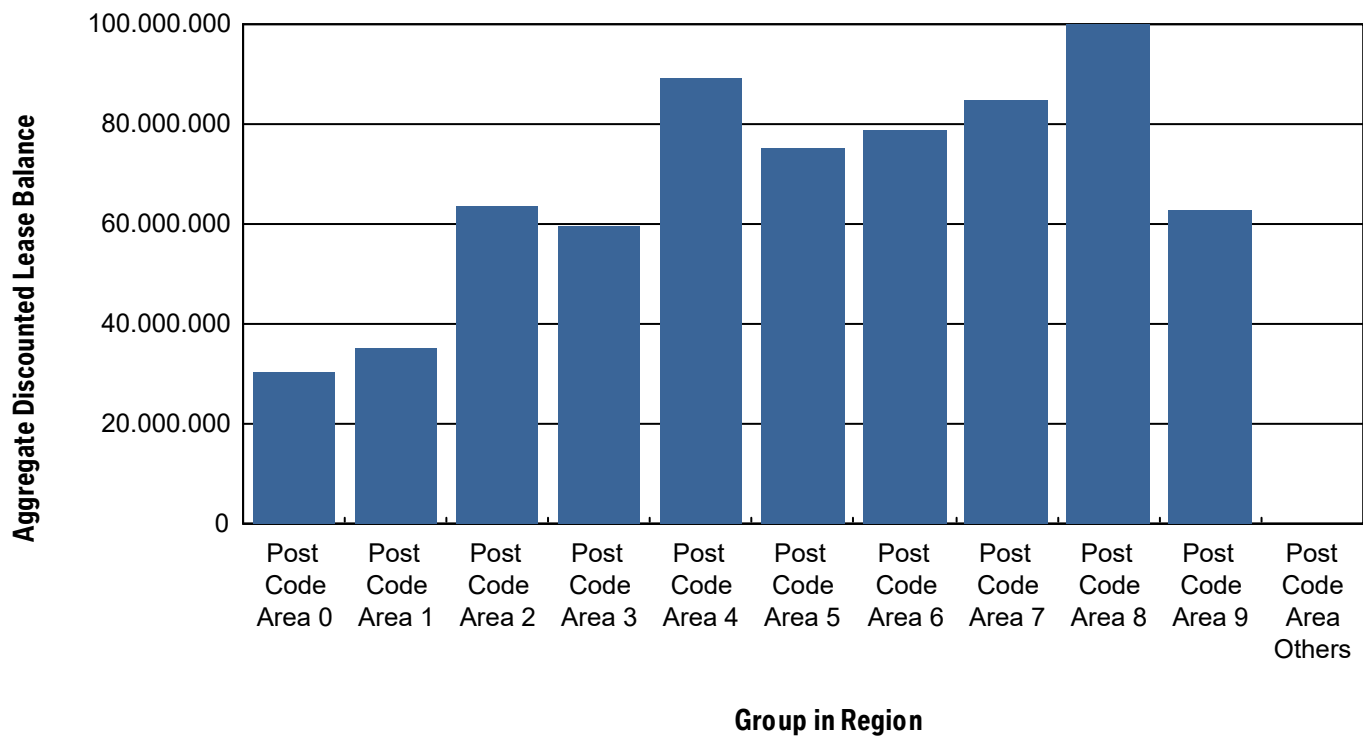
Group in Region	Current Aggregate Discounted Lease Balance in EUR	Current Aggregate Discounted Lease Balance in %	Number of Contracts	Number of Contracts in %
Post Code Area 0	30,235,193.60	4.45%	3,218	4.06%
Post Code Area 1	35,252,091.98	5.19%	4,071	5.14%
Post Code Area 2	63,584,312.27	9.36%	7,336	9.26%
Post Code Area 3	59,458,158.45	8.75%	6,850	8.65%
Post Code Area 4	89,056,087.39	13.11%	10,455	13.20%
Post Code Area 5	75,321,955.83	11.09%	9,160	11.57%
Post Code Area 6	78,627,417.90	11.58%	9,328	11.78%
Post Code Area 7	84,815,792.29	12.49%	9,938	12.55%
Post Code Area 8	99,973,565.80	14.72%	11,525	14.55%
Post Code Area 9	62,824,458.98	9.25%	7,296	9.21%
Post Code Area Others	73,987.24	0.01%	13	0.02%
Total	679,223,021.73	100.00%	79,190	100.00%

Bavarian Sky S.A., Compartment German Auto Leases 8
Monthly Investor Report

Reporting Date: Mar 11, 2025
 Payment Date: Mar 20, 2025
 Period No.: 16
 Monthly Period: Feb, 2025
 Interest Period: Feb 20, 2025 to Mar 20, 2025
 = 28 days

13.a Geographical Distribution (Graph)

Current Portfolio:



Bavarian Sky S.A., Compartment German Auto Leases 8
Monthly Investor Report

Reporting Date:	Mar 11, 2025
Payment Date:	Mar 20, 2025
Period No.:	16
Monthly Period:	Feb, 2025
Interest Period:	Feb 20, 2025 to Mar 20, 2025 = 28 days

14. Object Type

Initial Portfolio

Vehicle Type *	Current Aggregate Discounted Lease Balance in EUR	Current Aggregate Discounted Lease Balance in %	Number of Contracts	Number of Contracts in %
New	855,733,209.31	99.05%	68,539	99.09%
Used	8,166,697.78	0.95%	629	0.91%
Total	863,899,907.09	100.00%	69,168	100.00%

*New Car: include, for the avoidance of doubt, demonstration cars.

Customer Type **	Current Aggregate Discounted Lease Balance in EUR	Current Aggregate Discounted Lease Balance in %	Number of Contracts	Number of Contracts in %
Commercial	650,297,348.55	75.27%	46,202	66.80%
Private Individual	213,602,558.54	24.73%	22,966	33.20%
Total	863,899,907.09	100.00%	69,168	100.00%

** Private: include, for the avoidance of doubt, self-employed individuals.

Bavarian Sky S.A., Compartment German Auto Leases 8
Monthly Investor Report

Reporting Date:	Mar 11, 2025
Payment Date:	Mar 20, 2025
Period No.:	16
Monthly Period:	Feb, 2025
Interest Period:	Feb 20, 2025 to Mar 20, 2025 = 28 days

14. Object Type (Cont')

Current Portfolio

Vehicle Type *	Current Aggregate Discounted Lease Balance in EUR	Current Aggregate Discounted Lease Balance in %	Number of Contracts	Number of Contracts in %
New	669,687,168.69	98.60%	77,829	98.28%
Used	9,535,853.04	1.40%	1,361	1.72%
Total	679,223,021.73	100.00%	79,190	100.00%

*New Car: include, for the avoidance of doubt, demonstration cars.

Customer Type **	Current Aggregate Discounted Lease Balance in EUR	Current Aggregate Discounted Lease Balance in %	Number of Contracts	Number of Contracts in %
Commercial	485,939,554.01	71.54%	49,510	62.52%
Private Individual	193,283,467.72	28.46%	29,680	37.48%
Total	679,223,021.73	100.00%	79,190	100.00%

** Private: include, for the avoidance of doubt, self-employed individuals.

Bavarian Sky S.A., Compartment German Auto Leases 8
Monthly Investor Report

Reporting Date:	Mar 11, 2025
Payment Date:	Mar 20, 2025
Period No.:	16
Monthly Period:	Feb, 2025
Interest Period:	Feb 20, 2025 to Mar 20, 2025 = 28 days

15. Fuel Type

Current Portfolio

Fuel Type	Current Aggregate Discounted Lease Balance in EUR	Current Aggregate Discounted Lease Balance in %	Number of Contracts	Number of Contracts in %
B	251,266,574.21	36.99%	32,947	41.61%
D	184,032,854.36	27.09%	18,621	23.51%
E	130,391,743.22	19.20%	14,809	18.70%
X	100,664,189.99	14.82%	10,901	13.77%
Y	12,867,659.95	1.89%	1,912	2.41%
Total	679,223,021.73	100.00%	79,190	100.00%

B = Petrol; D = Diesel; E = Electric; G = LPG, H = Hydrogen; M = Methane; T = Ethanol; X = Hybrid-Petrol; Y = Hybrid-Diesel; Z = Hydrogen-Electric; U = Undefined.

Bavarian Sky S.A., Compartment German Auto Leases 8
Monthly Investor Report

Reporting Date:	Mar 11, 2025
Payment Date:	Mar 20, 2025
Period No.:	16
Monthly Period:	Feb, 2025
Interest Period:	Feb 20, 2025 to Mar 20, 2025 = 28 days

16. CO2 Emission Classes (EPCV)

Current Portfolio

CO2 Emission Classes (EPCV)	Current Aggregate Discounted Lease Balance in EUR	Current Aggregate Discounted Lease Balance in %	Number of Contracts	Number of Contracts in %
A	130,391,743.22	19.20%	14,809	18.70%
B	99,841,041.80	14.70%	10,363	13.09%
D	77,057,169.35	11.34%	13,406	16.93%
E	118,214,967.71	17.40%	16,662	21.04%
F	85,510,484.24	12.59%	9,372	11.83%
G	161,584,628.52	23.79%	11,829	14.94%
Unknown	6,622,986.89	0.98%	2,749	3.47%
Total	679,223,021.73	100.00%	79,190	100.00%

EPCV = Energy Performance Certificate Value

Defined CO2 emission classes (WLTP values) according to §3a of the German Pkw-EnVKV:

- A = 0 g/km
- B = 1 - 95 g/km
- C = 96 - 115 g/km
- D = 116 - 135 g/km
- E = 136 - 155 g/km
- F = 156 - 175 g/km
- G > 176 g/km

Bavarian Sky S.A., Compartment German Auto Leases 8
Monthly Investor Report

Reporting Date:	Mar 11, 2025
Payment Date:	Mar 20, 2025
Period No.:	16
Monthly Period:	Feb, 2025
Interest Period:	Feb 20, 2025 to Mar 20, 2025 = 28 days

17. Delinquencies

Initial Portfolio

Days Past Due	Current Aggregate Discounted Lease Balance in EUR	Current Aggregate Discounted Lease Balance in %	Number of Contracts	Number of Contracts in %
1 - 30	0.00	0.00%	0	0.00%
31 - 60	0.00	0.00%	0	0.00%
61 - 90	0.00	0.00%	0	0.00%
91 - 120	0.00	0.00%	0	0.00%
> 120	0.00	0.00%	0	0.00%
Total	0.00	0.00%	0	0.00%

Current Portfolio

Days Past Due	Current Aggregate Discounted Lease Balance in EUR	Current Aggregate Discounted Lease Balance in %	Number of Contracts	Number of Contracts in %
1 - 30	2,316,263.35	0.34%	244	0.31%
31 - 60	1,087,863.55	0.16%	95	0.12%
61 - 90	783,751.81	0.12%	57	0.07%
91 - 120	803,002.53	0.12%	52	0.07%
> 120	875,193.44	0.13%	77	0.10%
Total	5,866,074.68	0.86%	525	0.66%

Bavarian Sky S.A., Compartment German Auto Leases 8
Monthly Investor Report

Reporting Date: Mar 11, 2025
 Payment Date: Mar 20, 2025
 Period No.: 16
 Monthly Period: Feb, 2025
 Interest Period: Feb 20, 2025 to Mar 20, 2025
 = 28 days

17.a Delinquency Analysis

Monthly Period	Performing in EUR	Delinquencies			
		31-60 Days Past Due in EUR	61-90 Days Past Due in EUR	91-120 Days Past Due in EUR	>120 Days Past Due in EUR
Nov - 23	863,899,995.09	0.00	0.00	0.00	0.00
Dec - 23	862,809,630.87	1,090,313.85	0.00	0.00	0.00
Jan - 24	862,676,082.90	493,425.46	730,436.26	0.00	0.00
Feb - 24	862,140,025.48	695,082.12	438,963.74	625,869.33	0.00
Mar - 24	861,614,966.93	815,650.64	514,514.27	361,474.78	593,378.72
Apr - 24	861,308,871.97	721,508.53	531,881.72	418,130.33	919,557.97
May - 24	861,216,412.53	632,530.34	485,524.83	483,675.29	1,081,824.96
June - 24	861,031,010.43	1,053,988.69	373,082.32	435,719.55	1,006,182.80
July - 24	861,440,434.40	508,627.69	728,037.40	329,702.31	893,191.71
Aug - 24	861,144,976.04	984,365.29	499,162.20	510,545.52	760,909.90
Sept - 24	860,829,536.63	1,203,924.83	646,769.74	443,477.37	776,270.03
Oct - 24	861,217,731.48	792,789.63	779,539.03	352,912.97	756,948.58
Nov - 24	813,237,154.23	1,045,138.41	596,260.31	598,103.16	728,168.28
Dec - 24	765,535,313.59	1,506,963.18	772,038.35	548,960.05	826,184.09
Jan - 25	719,609,854.11	1,120,020.27	1,012,930.85	520,730.33	883,050.12
Feb - 25	675,673,210.40	1,087,863.55	783,751.81	803,002.53	875,193.44

Bavarian Sky S.A., Compartment German Auto Leases 8
Monthly Investor Report

Reporting Date:	Mar 11, 2025
Payment Date:	Mar 20, 2025
Period No.:	16
Monthly Period:	Feb, 2025
Interest Period:	Feb 20, 2025 to Mar 20, 2025 = 28 days

18. Seasoning

Initial Portfolio

Group in Months	Current Aggregate Discounted Lease Balance in EUR	Current Aggregate Discounted Lease Balance in %	Number of Contracts	Number of Contracts in %
<= 6	360,365,293.05	41.71%	19,478	28.16%
> 6 - <= 12	263,264,688.11	30.47%	16,804	24.29%
> 12 - <= 24	188,579,674.26	21.83%	18,706	27.04%
> 24 - <= 36	48,218,655.44	5.58%	12,998	18.79%
> 36 - <= 42	2,960,066.87	0.34%	916	1.32%
> 42 - <= 48	468,553.95	0.05%	252	0.36%
> 48 - <= 53	42,975.41	0.00%	14	0.02%
> 53	0.00	0.00%	0	0.00%
Total	863,899,907.09	100.00%	69,168	100.00%

WA: 9.88
MIN : 2.00
MAX: 53.00

Bavarian Sky S.A., Compartment German Auto Leases 8
Monthly Investor Report

Reporting Date:	Mar 11, 2025
Payment Date:	Mar 20, 2025
Period No.:	16
Monthly Period:	Feb, 2025
Interest Period:	Feb 20, 2025 to Mar 20, 2025 = 28 days

18. Seasoning (Cont')

Current Portfolio

Group in Months	Current Aggregate Discounted Lease Balance in EUR	Current Aggregate Discounted Lease Balance in %	Number of Contracts	Number of Contracts in %
<= 6	4,065,796.29	0.60%	259	0.33%
> 6 - <= 12	95,678,189.78	14.09%	6,545	8.26%
> 12 - <= 24	441,881,056.63	65.06%	41,830	52.82%
> 24 - <= 36	130,816,477.29	19.26%	27,166	34.30%
> 36 - <= 42	5,325,236.88	0.78%	1,906	2.41%
> 42 - <= 48	1,401,966.53	0.21%	1,455	1.84%
> 48 - <= 53	42,952.94	0.01%	10	0.01%
> 53	11,345.39	0.00%	19	0.02%
Total	679,223,021.73	100.00%	79,190	100.00%

WA: 19.21
MIN : 6.00
MAX: 60.00

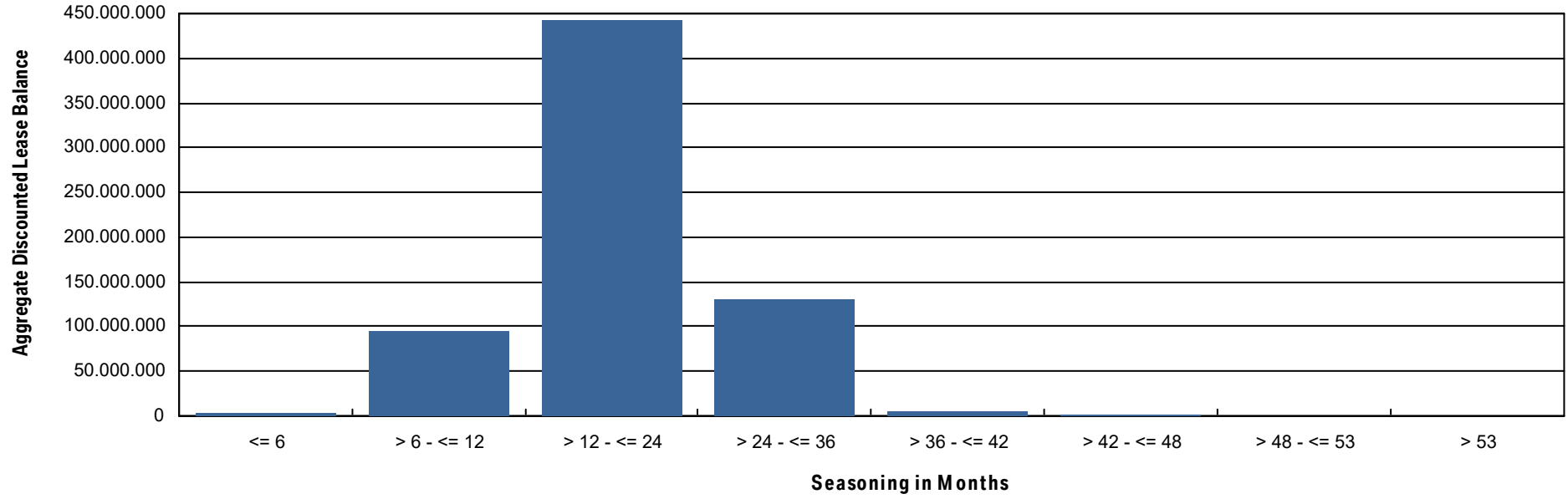


Bavarian Sky S.A., Compartment German Auto Leases 8
Monthly Investor Report

Reporting Date:	Mar 11, 2025
Payment Date:	Mar 20, 2025
Period No.:	16
Monthly Period:	Feb, 2025
Interest Period:	Feb 20, 2025 to Mar 20, 2025 = 28 days

18.a Seasoning (Graph)

Current Portfolio



Bavarian Sky S.A., Compartment German Auto Leases 8
Monthly Investor Report

Reporting Date:	Mar 11, 2025
Payment Date:	Mar 20, 2025
Period No.:	16
Monthly Period:	Feb, 2025
Interest Period:	Feb 20, 2025 to Mar 20, 2025 = 28 days

19. Remaining Term

Initial Portfolio

Group in Months	Current Aggregate Discounted Lease Balance in EUR	Current Aggregate Discounted Lease Balance in %	Number of Contracts	Number of Contracts in %
<= 6	12,395,423.48	1.43%	6,045	8.74%
> 6 - <= 12	38,484,253.73	4.45%	9,012	13.03%
> 12 - <= 24	187,204,220.58	21.67%	18,767	27.13%
> 24 - <= 36	437,803,460.28	50.68%	26,345	38.09%
> 36 - <= 42	87,307,598.91	10.11%	4,505	6.51%
> 42 - <= 48	99,278,151.61	11.49%	4,439	6.42%
> 48 - <= 53	669,212.96	0.08%	30	0.04%
> 53	757,585.54	0.09%	25	0.04%
Total	863,899,907.09	100.00%	69,168	100.00%

WA: 29.42
MIN : 3.00
MAX: 58.00

Bavarian Sky S.A., Compartment German Auto Leases 8
Monthly Investor Report

Reporting Date: Mar 11, 2025
 Payment Date: Mar 20, 2025
 Period No.: 16
 Monthly Period: Feb, 2025
 Interest Period: Feb 20, 2025 to Mar 20, 2025
 = 28 days

19. Remaining Term (Cont')

Current Portfolio

Group in Months	Current Aggregate Discounted Lease Balance in EUR	Current Aggregate Discounted Lease Balance in %	Number of Contracts	Number of Contracts in %
<= 6	20,754,733.67	3.06%	13,781	17.40%
> 6 - <= 12	79,239,162.21	11.67%	15,509	19.58%
> 12 - <= 24	342,541,250.65	50.43%	34,696	43.81%
> 24 - <= 36	214,063,713.10	31.52%	14,166	17.89%
> 36 - <= 42	22,067,079.77	3.25%	1,019	1.29%
> 42 - <= 48	345,950.23	0.05%	13	0.02%
> 48 - <= 53	211,132.10	0.03%	6	0.01%
> 53	0.00	0.00%	0	0.00%
Total	679,223,021.73	100.00%	79,190	100.00%

WA : 21.06
 MIN : 0.00
 MAX: 51.00

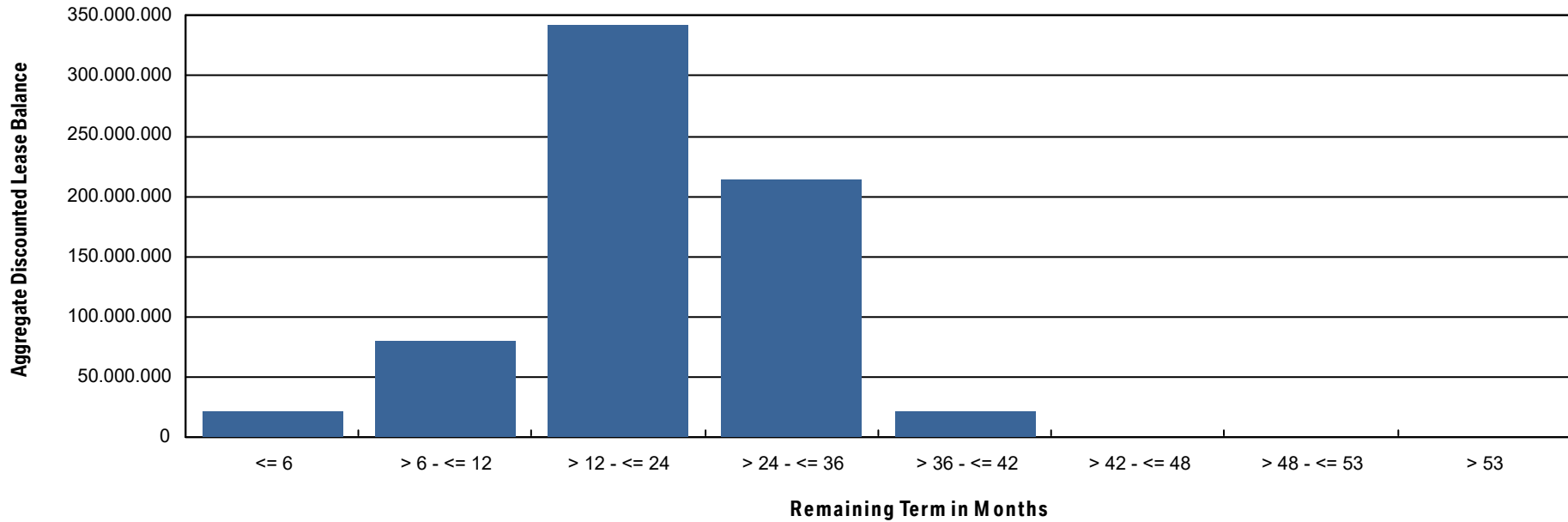


Bavarian Sky S.A., Compartment German Auto Leases 8
Monthly Investor Report

Reporting Date: Mar 11, 2025
Payment Date: Mar 20, 2025
Period No.: 16
Monthly Period: Feb, 2025
Interest Period: Feb 20, 2025 to Mar 20, 2025
= 28 days

19.a Remaining Term (Graph)

Current Portfolio



Bavarian Sky S.A., Compartment German Auto Leases 8
Monthly Investor Report

Reporting Date:	Mar 11, 2025
Payment Date:	Mar 20, 2025
Period No.:	16
Monthly Period:	Feb, 2025
Interest Period:	Feb 20, 2025 to Mar 20, 2025 = 28 days

20. Original Term

Initial Portfolio

Group in Months	Current Aggregate Discounted Lease Balance in EUR	Current Aggregate Discounted Lease Balance in %	Number of Contracts	Number of Contracts in %
<= 6	3,271.94	0.00%	2	0.00%
> 6 - <= 12	515,722.27	0.06%	174	0.25%
> 12 - <= 24	15,534,450.99	1.80%	2,265	3.27%
> 24 - <= 36	580,232,528.06	67.16%	50,239	72.63%
> 36 - <= 42	17,388,726.10	2.01%	2,085	3.01%
> 42 - <= 48	248,346,113.08	28.75%	14,297	20.67%
> 48 - <= 53	20,997.95	0.00%	8	0.01%
> 53	1,858,096.70	0.22%	98	0.14%
Total	863,899,907.09	100.00%	69,168	100.00%

WA : 39.30
MIN : 6.00
MAX: 60.00

Bavarian Sky S.A., Compartment German Auto Leases 8
Monthly Investor Report

Reporting Date:	Mar 11, 2025
Payment Date:	Mar 20, 2025
Period No.:	16
Monthly Period:	Feb, 2025
Interest Period:	Feb 20, 2025 to Mar 20, 2025 = 28 days

20. Original Term (Cont')

Current Portfolio

Group in Months	Current Aggregate Discounted Lease Balance in EUR	Current Aggregate Discounted Lease Balance in %	Number of Contracts	Number of Contracts in %
<= 6	0.00	0.00%	0	0.00%
> 6 - <= 12	43,146.96	0.01%	59	0.07%
> 12 - <= 24	9,401,411.92	1.38%	2,948	3.72%
> 24 - <= 36	411,659,839.30	60.61%	54,142	68.37%
> 36 - <= 42	11,314,320.55	1.67%	1,824	2.30%
> 42 - <= 48	244,142,397.64	35.94%	20,041	25.31%
> 48 - <= 53	39,355.70	0.01%	2	0.00%
> 53	2,622,549.66	0.39%	174	0.22%
Total	679,223,021.73	100.00%	79,190	100.00%

WA : 40.27
 MIN : 8.00
 MAX: 60.00

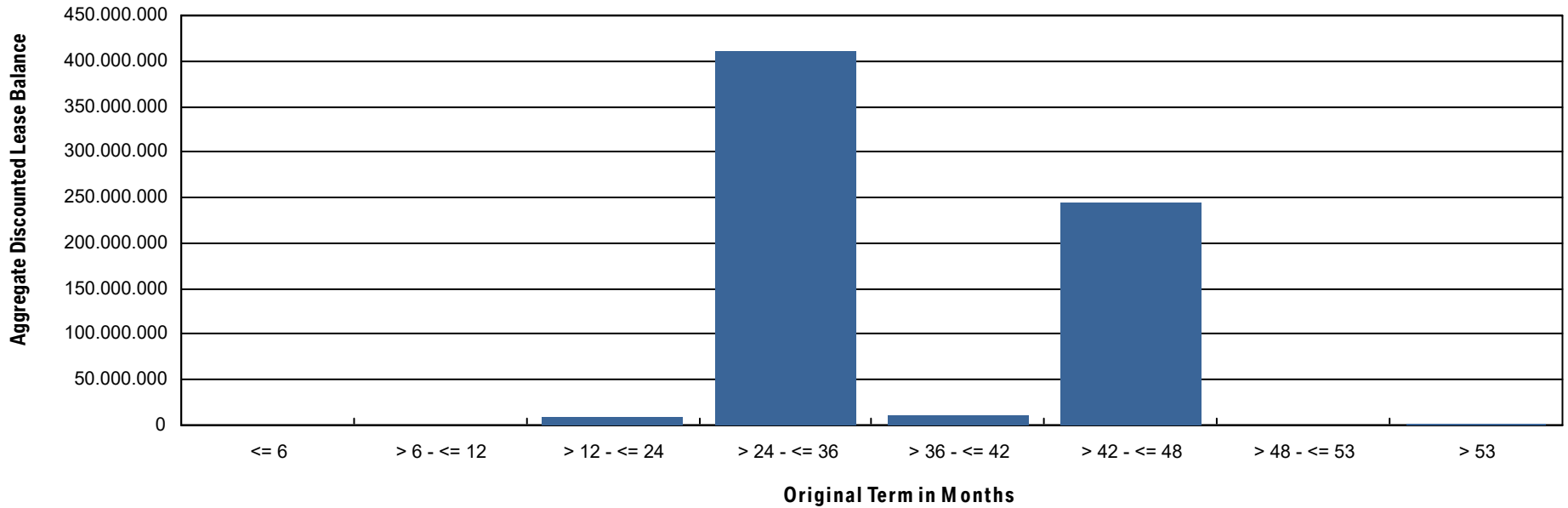


Bavarian Sky S.A., Compartment German Auto Leases 8
Monthly Investor Report

Reporting Date:	Mar 11, 2025
Payment Date:	Mar 20, 2025
Period No.:	16
Monthly Period:	Feb, 2025
Interest Period:	Feb 20, 2025 to Mar 20, 2025 = 28 days

20.a Original Term (Graph)

Current Portfolio



Bavarian Sky S.A., Compartment German Auto Leases 8

Monthly Investor Report

Reporting Date:	Mar 11, 2025
Payment Date:	Mar 20, 2025
Period No.:	16
Monthly Period:	Feb, 2025
Interest Period:	Feb 20, 2025 to Mar 20, 2025 = 28 days

21. Vehicle Class

Initial Portfolio

Group in Vehicle Class	Current Aggregate Discounted Lease Balance in EUR	Current Aggregate Discounted Lease Balance in %	Number of Contracts	Number of Contracts in %
BMW 1 Series	41,054,394.73	4.75%	6,605	9.55%
BMW 2 Series	33,944,649.16	3.93%	3,489	5.04%
BMW 3 Series	113,175,092.82	13.10%	10,718	15.50%
BMW 4 Series	75,947,576.38	8.79%	4,110	5.94%
BMW 5 Series	89,708,623.58	10.38%	5,975	8.64%
BMW 6 Series	1,870,264.84	0.22%	104	0.15%
BMW 7 Series	9,301,577.78	1.08%	361	0.52%
BMW 8 Series	14,922,072.32	1.73%	535	0.77%
BMW Group Others	3,613,527.23	0.42%	254	0.37%
BMW i3 Series	3,894,288.95	0.45%	855	1.24%
BMW i8 Series	16,222.74	0.00%	1	0.00%
BMW iX	20,959,502.34	2.43%	712	1.03%
BMW X1 Series	76,719,928.20	8.88%	6,163	8.91%
BMW X2 Series	12,272,635.08	1.42%	1,382	2.00%
BMW X3 Series	126,058,109.31	14.59%	9,376	13.56%
BMW X4 Series	19,588,338.72	2.27%	1,215	1.76%
BMW X5 Series	99,258,692.70	11.49%	4,688	6.78%
BMW X6 Series	16,815,895.80	1.95%	744	1.08%
BMW X7 Series	16,037,269.05	1.86%	596	0.86%
BMW XM	1,405,320.90	0.16%	19	0.03%
BMW Z4 Series	7,190,009.28	0.83%	616	0.89%
MINI Clubman	6,190,154.99	0.72%	788	1.14%
MINI Hatch	73,955,760.19	8.56%	9,862	14.26%
Total	863,899,907.09	100.00%	69,168	100.00%

Bavarian Sky S.A., Compartment German Auto Leases 8

Monthly Investor Report

Reporting Date:	Mar 11, 2025
Payment Date:	Mar 20, 2025
Period No.:	16
Monthly Period:	Feb, 2025
Interest Period:	Feb 20, 2025 to Mar 20, 2025 = 28 days

21. Vehicle Class (Cont')

Current Portfolio

Group in Vehicle Class	Current Aggregate Discounted Lease Balance in EUR	Current Aggregate Discounted Lease Balance in %	Number of Contracts	Number of Contracts in %
BMW 1 Series	33,248,868.52	4.90%	6,804	8.59%
BMW 2 Series	28,025,403.04	4.13%	4,253	5.37%
BMW 3 Series	80,279,044.91	11.82%	9,468	11.96%
BMW 4 Series	68,864,271.89	10.14%	6,161	7.78%
BMW 5 Series	57,390,627.33	8.45%	5,801	7.33%
BMW 5 Series 1005	1,427,300.42	0.21%	66	0.08%
BMW 6 Series	1,150,013.41	0.17%	96	0.12%
BMW 7 Series	9,760,984.20	1.44%	420	0.53%
BMW 8 Series	10,212,196.75	1.50%	564	0.71%
BMW Group Others	3,158,612.46	0.47%	332	0.42%
BMW i3 Series	2,585,585.56	0.38%	806	1.02%
BMW i8 Series	40,826.05	0.01%	4	0.01%
BMW iX	19,254,072.89	2.83%	1,293	1.63%
BMW X1 Series	75,522,505.20	11.12%	8,855	11.18%
BMW X2 Series	8,670,768.39	1.28%	1,449	1.83%
BMW X3 Series	92,642,947.02	13.64%	10,441	13.18%
BMW X4 Series	14,169,643.73	2.09%	1,342	1.69%
BMW X5 Series	73,975,992.97	10.89%	4,996	6.31%
BMW X6 Series	11,319,098.87	1.67%	724	0.91%
BMW X7 Series	13,162,273.74	1.94%	653	0.82%
BMW XM	2,544,819.33	0.37%	57	0.07%
BMW Z4 Series	5,870,716.66	0.86%	745	0.94%
MINI Clubman	4,305,466.38	0.63%	816	1.03%
MINI Cooper 2000	322,133.37	0.05%	46	0.06%
MINI Countryman	1,058,602.93	0.16%	100	0.13%
MINI Hatch	60,260,245.71	8.87%	12,898	16.29%
Total	679,223,021.73	100.00%	79,190	100.00%

Bavarian Sky S.A., Compartment German Auto Leases 8
Monthly Investor Report

Reporting Date:	Mar 11, 2025
Payment Date:	Mar 20, 2025
Period No.:	16
Monthly Period:	Feb, 2025
Interest Period:	Feb 20, 2025 to Mar 20, 2025 = 28 days

22. Payment Type

Initial Portfolio

Group in Payment Type	Current Aggregate Discounted Lease Balance in EUR	Current Aggregate Discounted Lease Balance in %	Number of Contracts	Number of Contracts in %
Direct Debit	861,005,445.48	99.66%	68,932	99.66%
Self Payment	2,894,461.61	0.34%	236	0.34%
Total	863,899,907.09	100.00%	69,168	100.00%

Current Portfolio

Group in Payment Type	Current Aggregate Discounted Lease Balance in EUR	Current Aggregate Discounted Lease Balance in %	Number of Contracts	Number of Contracts in %
Direct Debit	673,527,139.96	99.16%	78,576	99.22%
Self Payment	5,695,881.77	0.84%	614	0.78%
Total	679,223,021.73	100.00%	79,190	100.00%

Bavarian Sky S.A., Compartment German Auto Leases 8
Monthly Investor Report

Reporting Date:	Mar 11, 2025
Payment Date:	Mar 20, 2025
Period No.:	16
Monthly Period:	Feb, 2025
Interest Period:	Feb 20, 2025 to Mar 20, 2025 = 28 days

23. Contracts Per Lessee

Initial Portfolio

Number of Contracts	Current Aggregate Discounted Lease Balance in EUR	Current Aggregate Discounted Lease Balance in %	Number of Contracts	Number of Contracts in %
1	615,338,715.17	71.23%	50,184	72.55%
2 - 4	194,164,326.40	22.48%	14,110	20.40%
5 - 7	30,130,436.56	3.49%	2,570	3.72%
8 - 10	10,248,458.04	1.19%	882	1.28%
> 10	14,017,970.92	1.62%	1,422	2.06%
Total	863,899,907.09	100.00%	69,168	100.00%

Current Portfolio

Number of Contracts	Current Aggregate Discounted Lease Balance in EUR	Current Aggregate Discounted Lease Balance in %	Number of Contracts	Number of Contracts in %
1	506,104,872.39	74.51%	59,981	75.74%
2 - 4	136,356,073.89	20.08%	14,329	18.09%
5 - 7	19,976,565.65	2.94%	2,421	3.06%
8 - 10	6,922,434.57	1.02%	896	1.13%
> 10	9,863,075.23	1.45%	1,563	1.97%
Total	679,223,021.73	100.00%	79,190	100.00%

Bavarian Sky S.A., Compartment German Auto Leases 8

Monthly Investor Report

Reporting Date:	Mar 11, 2025
Payment Date:	Mar 20, 2025
Period No.:	16
Monthly Period:	Feb, 2025
Interest Period:	Feb 20, 2025 to Mar 20, 2025 = 28 days

24. Amortisation

Initial Portfolio

Period	Month / Year	Principal Balance in EUR
0	Oct, 2023	863,899,907.09
1	Nov, 2023	829,606,661.61
2	Dec, 2023	795,113,371.19
3	Jan, 2024	760,736,706.75
4	Feb, 2024	726,824,907.19
5	Mar, 2024	693,451,763.90
6	Apr, 2024	660,785,162.00
7	May, 2024	628,687,865.54
8	June, 2024	597,166,845.83
9	July, 2024	566,274,000.98
10	Aug, 2024	535,918,313.89
11	Sept, 2024	506,043,625.83
12	Oct, 2024	476,754,770.04
13	Nov, 2024	448,053,451.18
14	Dec, 2024	420,026,831.27
15	Jan, 2025	392,511,026.37
16	Feb, 2025	365,458,540.23
17	Mar, 2025	338,970,987.19
18	Apr, 2025	313,198,343.78
19	May, 2025	288,047,726.27
20	June, 2025	263,649,050.69
21	July, 2025	240,044,424.15
22	Aug, 2025	217,307,724.69
23	Sept, 2025	195,563,161.75
24	Oct, 2025	174,845,058.33
25	Nov, 2025	155,409,200.25
26	Dec, 2025	137,625,034.97
27	Jan, 2026	120,962,632.87
28	Feb, 2026	105,137,185.30
29	Mar, 2026	90,359,429.28
30	Apr, 2026	76,932,390.42

Current Portfolio

Period	Month / Year	Principal Balance in EUR	Reduction in EUR
16	Feb, 2025	679,223,021.73	
17	Mar, 2025	636,422,269.18	42,800,752.55
18	Apr, 2025	596,602,831.79	39,819,437.39
19	May, 2025	557,483,752.60	39,119,079.19
20	June, 2025	519,209,531.15	38,274,221.45
21	July, 2025	481,828,243.61	37,381,287.54
22	Aug, 2025	445,414,598.50	36,413,645.11
23	Sept, 2025	410,095,072.37	35,319,526.13
24	Oct, 2025	375,962,075.12	34,132,997.25
25	Nov, 2025	343,314,360.96	32,647,714.16
26	Dec, 2025	312,695,380.85	30,618,980.11
27	Jan, 2026	283,439,368.12	29,256,012.73
28	Feb, 2026	255,125,351.15	28,314,016.97
29	Mar, 2026	227,991,751.52	27,133,599.63
30	Apr, 2026	202,396,911.34	25,594,840.18
31	May, 2026	178,155,279.47	24,241,631.87
32	June, 2026	155,690,000.61	22,465,278.86
33	July, 2026	135,459,502.52	20,230,498.09
34	Aug, 2026	117,460,030.23	17,999,472.29
35	Sept, 2026	101,444,390.21	16,015,640.02
36	Oct, 2026	86,711,163.48	14,733,226.73
37	Nov, 2026	73,465,595.59	13,245,567.89
38	Dec, 2026	62,278,162.40	11,187,433.19
39	Jan, 2027	52,383,671.20	9,894,491.20
40	Feb, 2027	43,305,810.45	9,077,860.75
41	Mar, 2027	35,203,833.08	8,101,977.37
42	Apr, 2027	28,259,003.68	6,944,829.40
43	May, 2027	22,184,474.95	6,074,528.73
44	June, 2027	17,177,407.77	5,007,067.18
45	July, 2027	13,270,818.78	3,906,588.99
46	Aug, 2027	10,288,123.84	2,982,694.94

Bavarian Sky S.A., Compartment German Auto Leases 8
Monthly Investor Report

Reporting Date: Mar 11, 2025
 Payment Date: Mar 20, 2025
 Period No.: 16
 Monthly Period: Feb, 2025
 Interest Period: Feb 20, 2025 to Mar 20, 2025
 = 28 days

24. Amortisation

Initial Portfolio

Period	Month / Year	Principal Balance in EUR
31	May, 2026	64,703,804.84
32	June, 2026	54,037,382.17
33	July, 2026	45,333,428.45
34	Aug, 2026	38,570,899.84
35	Sept, 2026	33,184,830.91
36	Oct, 2026	28,087,021.25
37	Nov, 2026	23,368,718.64
38	Dec, 2026	19,168,063.56
39	Jan, 2027	15,340,340.43
40	Feb, 2027	11,764,501.99
41	Mar, 2027	8,554,957.67
42	Apr, 2027	5,826,149.50
43	May, 2027	3,489,795.89
44	June, 2027	1,731,257.77
45	July, 2027	649,347.03
46	Aug, 2027	219,268.75
47	Sept, 2027	186,911.83
48	Oct, 2027	156,022.77
49	Nov, 2027	127,902.28
50	Dec, 2027	103,348.24
51	Jan, 2028	82,190.19
52	Feb, 2028	63,031.08
53	Mar, 2028	46,875.82
54	Apr, 2028	32,086.27
55	May, 2028	19,985.34
56	June, 2028	8,683.52
57	July, 2028	961.52
58	Aug, 2028	0.00

Current Portfolio

Period	Month / Year	Principal Balance in EUR	Reduction in EUR
47	Sept, 2027	7,966,248.69	2,321,875.15
48	Oct, 2027	6,000,701.13	1,965,547.56
49	Nov, 2027	4,407,080.52	1,593,620.61
50	Dec, 2027	3,248,501.15	1,158,579.37
51	Jan, 2028	2,345,722.38	902,778.77
52	Feb, 2028	1,610,050.02	735,672.36
53	Mar, 2028	1,041,667.77	568,382.25
54	Apr, 2028	634,503.25	407,164.52
55	May, 2028	350,135.20	284,368.05
56	June, 2028	168,078.58	182,056.62
57	July, 2028	84,746.98	83,331.60
58	Aug, 2028	55,605.66	29,141.32
59	Sept, 2028	43,156.49	12,449.17
60	Oct, 2028	33,347.51	9,808.98
61	Nov, 2028	26,436.15	6,911.36
62	Dec, 2028	19,727.14	6,709.01
63	Jan, 2029	13,242.27	6,484.87
64	Feb, 2029	7,485.88	5,756.39
65	Mar, 2029	3,142.71	4,343.17
66	Apr, 2029	70.31	3,072.40
67	May, 2029	0.00	70.31
68	June, 2029	0.00	0.00
69	July, 2029	0.00	0.00
70	Aug, 2029	0.00	0.00
71	Sept, 2029	0.00	0.00
72	Oct, 2029	0.00	0.00
73	Nov, 2029	0.00	0.00
74	Dec, 2029	0.00	0.00

Bavarian Sky S.A., Compartment German Auto Leases 8
Monthly Investor Report

Reporting Date:	Mar 11, 2025
Payment Date:	Mar 20, 2025
Period No.:	16
Monthly Period:	Feb, 2025
Interest Period:	Feb 20, 2025 to Mar 20, 2025 = 28 days

25. Priority of Payments

All amounts in EUR

Available Distribution Amount	+	57,130,488.24
Taxes	-	0.00
Trustee Payment	-	0.00
Senior Expenses	-	246.53
Swap Net Payment	-	564,149.66
Class A Interest	-	1,562,800.00
Cash Reserve	-	9,502,900.00
Replenishment Amount	-	0.00
Class A Principal	-	45,500,392.05
Class B Interest	-	0.00
Class B Principal	-	0.00
Swap Termination Event	-	0.00
Subordinated Loan Interest	-	0.00
Subordinated Loan Principal	-	0.00
Seller	-	0.00

Bavarian Sky S.A., Compartment German Auto Leases 8
Monthly Investor Report

Reporting Date:	Mar 11, 2025
Payment Date:	Mar 20, 2025
Period No.:	16
Monthly Period:	Feb, 2025
Interest Period:	Feb 20, 2025 to Mar 20, 2025 = 28 days

26. Transaction Costs

Transaction Costs (in EUR)	Class A	Class B	Subordinated Loan	Total
Senior Expenses				246.53
Interest accrued for the Period	1,562,800.00	149,097.87	34,176.65	1,746,074.52
Interest payments for the Period	1,562,800.00	0.00	0.00	1,562,800.00
Cumulative Interest Payments	41,682,240.00	1,948,956.39	550,518.58	44,181,714.97
Unpaid Interest for the Period	0.00	149,097.87	34,176.65	183,274.52
Cumulative Unpaid Interest	0.00	638,993.61	152,555.34	791,548.95

Bavarian Sky S.A., Compartment German Auto Leases 8
Monthly Investor Report

Reporting Date:	Mar 11, 2025
Payment Date:	Mar 20, 2025
Period No.:	16
Monthly Period:	Feb, 2025
Interest Period:	Feb 20, 2025 to Mar 20, 2025 = 28 days

27. Ratings

		Fitch	S&P	Moodys	DBRS
Notes - current ratings					
	Class A	AAA	N/A	Aaa	AAA
	Class B	N/A	N/A	N/A	N/A

			Fitch	S&P	Moodys	DBRS	Trigger Breached
Transaction Parties - current ratings							
	BMW AG	Long Term	N/A	A	A2	N/A	
		Short Term	N/A	A-1	P-1	N/A	
Issuer Account Bank	The Bank of New York Mellon	Long Term	AA	N/A	Aa1	N/A	no
		Short Term	F1+	N/A	P-1	N/A	no
Swap Counterparty	Skandinaviska Enskilda Banken AB	Long Term	AA-	N/A	Aa2	A	no
		Short Term	F1+	N/A	P-1	N/A	no

			Fitch	S&P	Moodys	DBRS
Transaction Parties - required ratings						
Issuer Account Bank	The Bank of New York Mellon	Long Term	A	N/A	A2	A
		Short Term	F1	N/A	P-1	N/A
Swap Counterparty	Skandinaviska Enskilda Banken AB	Long Term	A	N/A	A3	A
		Short Term	F1	N/A	N/A	N/A

Bavarian Sky S.A., Compartment German Auto Leases 8
Monthly Investor Report

Reporting Date:	Mar 11, 2025
Payment Date:	Mar 20, 2025
Period No.:	16
Monthly Period:	Feb, 2025
Interest Period:	Feb 20, 2025 to Mar 20, 2025 = 28 days

28. Swap Information

Swap Counterparty	
Swap Counterparty	Skandinaviska Enskilda Banken AB (publ)
Swap Termination Event	No

Swap data	
Swap type	Fixed floating interest rate swap
Notional amount in EUR	653,648,695.61
Fix leg	
Fixed rate	3.485%
Payment in EUR (Bavarian Sky S.A., Compartment German Auto Leases 8 to Skandinaviska Enskilda Banken AB (publ))	1,898,174.02
Floating leg	
Floating rate (Euribor)	2.624%
Payment in EUR (Skandinaviska Enskilda Banken AB (publ) to Bavarian Sky S.A., Compartme	1,334,024.36
Net swap payment (in EUR)	-564,149.66
- = from Bavarian Sky S.A., Compartment German Auto Leases 8 to Skandinaviska Enskilda Banken AB (publ)	
+ = from Skandinaviska Enskilda Banken AB (publ) to Bavarian Sky S.A., Compartment German Auto Leases 8)	