

**BMW
GROUP**



ROLLS-ROYCE
MOTOR CARS LTD

Bavarian Sky S.A., Compartment German Auto Leases 8

Monthly Investor Report - September 2024

Bavarian Sky S.A., Compartment German Auto Leases 8

Monthly Investor Report

Reporting Date:	Oct 10, 2024
Payment Date:	Oct 21, 2024
Period No.:	11
Monthly Period:	Sept, 2024
Interest Period:	Sept 20, 2024 to Oct 21, 2024 = 31 days

Index

1. Contact Information
2. Reporting Contact Details
3. Counterparty History
4. Overview Dates
5. Deal Level Tests & Triggers
6. Portfolio Information
7. Replenishment Fund / Reserves
8. Performance Data
9. Defaulted Amount & Recovery Amount
- 9.a Defaulted Amount & Recovery Amount - Lease Level Data
- 9.b Defaulted Amount & Recovery Amount - Lease Level Data (Out of Deal)
10. Outstanding Notes Balance
11. Initial Aggregate Lease Balance
- 11.a Initial Aggregate Lease Balance (Graph)
12. Aggregate Lease Balance
- 12.a Aggregate Lease Balance (Graph)
13. Borrower Concentration
14. Geographical Distribution
- 14.a Geographical Distribution (Graph)
15. Object Type
16. Fuel Type
17. Delinquencies
- 17.a Delinquency Analysis
18. Seasoning
- 18.a Seasoning (Graph)
19. Remaining Term
- 19.a Remaining Term (Graph)
20. Original Term
- 20.a Original Term (Graph)
21. Vehicle Class
22. Payment Type
23. Contracts per Customer
24. Replenishment Conditions
25. Amortisation
26. Priority of Payments
27. Transaction Costs
28. Ratings
29. Swap Information

Bavarian Sky S.A., Compartment German Auto Leases 8
Monthly Investor Report

Reporting Date:	Oct 10, 2024
Payment Date:	Oct 21, 2024
Period No.:	11
Monthly Period:	Sept, 2024
Interest Period:	Sept 20, 2024 to Oct 21, 2024 = 31 days

1. Contact Information

Issuer: **Bavarian Sky S.A.**
Acting in respect of its Compartment German Auto Leases 8
287-289 route d'Arlon
L-1150 Luxembourg
Grand Duchy of Luxembourg
Attn.: The Directors
LU-BavarianSky@intertrustgroup.com
+352 26 56 31 71

Corporate Administrator: **Intertrust (Luxembourg) S.à r.l.**
28 Boulevard F.W. Raiffeisen
L-2411 Luxembourg
Luxembourg
Attn.: BUO - Capital Markets
LU-BavarianSky@intertrustgroup.com
+352 26 44 91

Originator/Servicer: **BMW Bank GmbH**
Lilienthalallee 26
80939 Munich
Germany
Attn.: ABS Servicing Team
abs.bmwgroup@bmw.de

Calculation Agent: **The Bank of New York Mellon**
160 Queen Victoria Street
EC4V 4LA London
United Kingdom
Attn.: BNYM Structured Finance Team 8
BNYM.Structured.Finance.Team.8@bnymellon.com

**Bavarian Sky S.A., Compartment German Auto Leases 8
Monthly Investor Report**

Reporting Date:	Oct 10, 2024
Payment Date:	Oct 21, 2024
Period No.:	11
Monthly Period:	Sept, 2024
Interest Period:	Sept 20, 2024 to Oct 21, 2024 = 31 days

1. Contact Information**Paying Agent:**

The Bank of New York Mellon
160 Queen Victoria Street
EC4V 4LA London
United Kingdom
Attn.: BNYM Structured Finance Team 8
BNYM.Structured.Finance.Team.8@bnymellon.com

Issuer Account Bank:

The Bank of New York Mellon
Friedrich-Ebert-Anlage 49, Messeturm
60327 Frankfurt am Main
Germany
Attn.: BNYM Structured Finance Team 8
BNYM.Structured.Finance.Team.8@bnymellon.com

Trustee:

BNY MELLON CORPORATE TRUSTEE SERVICES LIMITED
160 Queen Victoria Street
EC4V 4AL London
United Kingdom
Attn.: BNYM Structured Finance Team 8
BNYM.Structured.Finance.Team.8@bnymellon.com

Data Trustee:

The Bank of New York Mellon
Friedrich-Ebert-Anlage 49, Messeturm
60327 Frankfurt am Main
Germany
Attn.: BNYM Structured Finance Team 8
BNYM.Structured.Finance.Team.8@bnymellon.com

Bavarian Sky S.A., Compartment German Auto Leases 8
Monthly Investor Report

Reporting Date:	Oct 10, 2024
Payment Date:	Oct 21, 2024
Period No.:	11
Monthly Period:	Sept, 2024
Interest Period:	Sept 20, 2024 to Oct 21, 2024 = 31 days

1. Contact Information**Swap Counterparty:****Skandinaviska Enskilda Banken AB**

Kungsträdgårdsgatan 8
SE-106 40 Stockholm
Sweden
TDLegal@seb.de

Rating Agency:**DBRS Ratings GmbH**

Neue Mainzer Straße 75
60311 Frankfurt am Main
Germany
eu.abs.surveillance@dbrsmorningstar.com

FITCH RATINGS LTD

30 North Colonnade, Canary Wharf
E14 5GN London
United Kingdom
ABSsurveillance@fitchratings.com

Moody's Deutschland GmbH

An der Welle 5
60322 Frankfurt am Main
Germany
monitor.abs@moodys.com



Bavarian Sky S.A., Compartment German Auto Leases 8
Monthly Investor Report

Reporting Date:	Oct 10, 2024
Payment Date:	Oct 21, 2024
Period No.:	11
Monthly Period:	Sept, 2024
Interest Period:	Sept 20, 2024 to Oct 21, 2024 = 31 days

2. Reporting Contact Details

Contact for Investor Reporting:

BMW Bank GmbH
Lilienthalallee 26
80939 Munich
Germany
Attn.: BMW Bank - ABS Servicing Team
abs.bmwgroup@bmw.de
+49-89-382-42480/-53070



Bavarian Sky S.A., Compartment German Auto Leases 8
Monthly Investor Report

Reporting Date:	Oct 10, 2024
Payment Date:	Oct 21, 2024
Period No.:	11
Monthly Period:	Sept, 2024
Interest Period:	Sept 20, 2024 to Oct 21, 2024 = 31 days

3. Counterparty History

Replacement Party to be added if applicable

Bavarian Sky S.A., Compartment German Auto Leases 8
Monthly Investor Report

Reporting Date:	Oct 10, 2024
Payment Date:	Oct 21, 2024
Period No.:	11
Monthly Period:	Sept, 2024
Interest Period:	Sept 20, 2024 to Oct 21, 2024 = 31 days

4. Overview Dates

Initial Cut-Off Date:	Oct 31, 2023	Revolving Period End Date (including):	Nov 20, 2024
Issue Date:	Nov 20, 2023	Legal Maturity Date:	Nov 20, 2031
Reporting Date:	Oct 10, 2024		
Investor Reporting Date:	Oct 17, 2024		
Interest Determination Date:	Sept 18, 2024		
Reporting Frequency:	monthly		
Monthly Period No.:	11	(since Issue Date)	
Payment Date:	Oct 21, 2024		
Next Payment Date:	Nov 20, 2024		
Monthly Period:	Sept 01, 2024	until	Sept 30, 2024

Bavarian Sky S.A., Compartment German Auto Leases 8

Monthly Investor Report

Reporting Date:	Oct 10, 2024
Payment Date:	Oct 21, 2024
Period No.:	11
Monthly Period:	Sept, 2024
Interest Period:	Sept 20, 2024 to Oct 21, 2024 = 31 days

5. Deal Level Tests & Triggers

"Early Amortization Event" means the occurrence of any of the following events during the Revolving Period:

	Trigger Value	Actual Value	Trigger Breached
(i) as at any Cut-Off Date, the Cumulative Gross Loss Ratio exceeds 1.00% for any Payment Date;	1.00%	0.26%	no
(ii) as at any Payment Date, the 3 Month Rolling Average Delinquency Percentage exceeds 1.5%;	1.50%	0.32%	no
(iii) if after application of the Available Distribution Amount in accordance with the Pre-Enforcement Priority of Payments, the Excess Collection Amount paid to the Replenishment Ledger under item seventh of the Pre-Enforcement Priority of Payments on any Payment Date (when aggregated with any Additional Purchase Price paid on such Payment Date) would be lower than the Replenishment Available Amount;	yes	no	no
(iv) on two consecutive Cut-Off Dates, the amount standing to the credit of the Replenishment Ledger exceeds 10% of the Initial Aggregate Discounted Outstanding Lease Balance;	10.00%	0.00%	no
(v) the occurrence of an Issuer Event of Default; or	yes	no	no
(vi) the occurrence of a Servicer Termination Event.	yes	no	no

Bavarian Sky S.A., Compartment German Auto Leases 8
Monthly Investor Report

Reporting Date:	Oct 10, 2024
Payment Date:	Oct 21, 2024
Period No.:	11
Monthly Period:	Sept, 2024
Interest Period:	Sept 20, 2024 to Oct 21, 2024 = 31 days

6. Portfolio Information

	current period	prior period
Outstanding receivables (in EUR)	Aggregate Discounted Lease Balance	Aggregate Discounted Lease Balance
Beginning of period	863,899,958.95	863,899,993.51
Scheduled Principal payments	42,305,613.16	41,442,741.03
Repurchases* principal	3,663,144.08	2,600,378.41
Repurchases* number of contracts	1,159	1,041
Total principal collections	45,968,757.24	44,043,119.44
Total interest collections	4,982,902.47	4,990,265.40
Unpaid Interest	23,255.74	22,517.71
Defaulted Amounts	425,672.11	459,266.33
Recoveries	7,788.73	12,861.59
Additional Lease Receivables amount	46,371,193.26	44,479,833.50
End of Period	863,899,978.60	863,899,958.95
Current repurchase rate (annualised)	4.97%	3.55%

Repurchases include all contracts repurchased due to early terminations or financial changes

Bavarian Sky S.A., Compartment German Auto Leases 8
Monthly Investor Report

Reporting Date:	Oct 10, 2024
Payment Date:	Oct 21, 2024
Period No.:	11
Monthly Period:	Sept, 2024
Interest Period:	Sept 20, 2024 to Oct 21, 2024 = 31 days

7. Replenishment Fund / Reserves

Replenishment Fund	in EUR
Outstanding replenishment fund beginning of period	41.05
Interest on replenishment fund - previous period	0.00
Additional Lease Receivables	46,371,193.26
Outstanding replenishment fund end of period	21.40

Cash Reserve	in %	in EUR
Outstanding cash reserve beginning of period		9,502,900.00
Interest on cash reserve - previous period		0.00
Required cash reserve		9,502,900.00
Outstanding cash reserve end of period		9,502,900.00

Bavarian Sky S.A., Compartment German Auto Leases 8
Monthly Investor Report

Reporting Date:	Oct 10, 2024
Payment Date:	Oct 21, 2024
Period No.:	11
Monthly Period:	Sept, 2024
Interest Period:	Sept 20, 2024 to Oct 21, 2024 = 31 days

7. Replenishment Fund / Reserves (Cont')

Additional Reserves Triggers*									
Reserves	Current ratio	Trigger	Required Rating BMW AG						Trigger Breach
				Fitch	S&P	Moody's	DBRS		
Commingling Reserve	N/A	N/A	Long Term	BBB	N/A	Baa1	BBB low	no	
			Short Term	F2	N/A	P-2	N/A		
Servicing Reserve	N/A	N/A	Long Term	BBB	N/A	Baa1	BBB low	no	

Additional Reserves	in EUR
Outstanding Commingling Reserve end of period	0.00
Outstanding Servicing Reserve end of period	0.00

* Breach of this trigger in conjunction with any other event as set out in the Servicing Agreement and/or the Lease Receivables Purchase Agreement will oblige BMW Bank GmbH to post additional cash collateral or change the sweep frequency (from the collections account to the issuer account) from monthly to daily. The Reserves will be adjusted on a monthly basis and shall be deposited in the Issuer Account and exclusively reserved to cover risks.

Bavarian Sky S.A., Compartment German Auto Leases 8
Monthly Investor Report

Reporting Date:	Oct 10, 2024
Payment Date:	Oct 21, 2024
Period No.:	11
Monthly Period:	Sept, 2024
Interest Period:	Sept 20, 2024 to Oct 21, 2024 = 31 days

8. Performance Data

Aggregate outstanding notes balance

Beginning of period in EUR	863,900,000.00
End of period in EUR	863,900,000.00

Ratios	in EUR	in %
31- 60 days past due		
31- 60 days past due period before previous period	508,627.69	0.06
31- 60 days past due previous period	984,365.29	0.11
31- 60 days past due current period	1,203,924.83	0.14
61- 90 days past due		
61- 90 days past due period before previous period	728,037.40	0.08
61- 90 days past due previous period	499,162.20	0.06
61- 90 days past due current period	646,769.74	0.07

Performance data		
Number of contracts being 31 - 60 days delinquent	101	
Number of contracts being 61 - 90 days delinquent	45	
Balance in EUR of contracts being 31 - 60 days delinquent	1,203,924.83	
Balance in EUR of contracts being 61 - 90 days delinquent	646,769.74	
Defaulted amounts in EUR	425,672.11	
Cumulative defaulted amounts in EUR	2,319,502.64	
Recoveries in EUR	7,788.73	
Cumulative recoveries in EUR	30,721.95	

Bavarian Sky S.A., Compartment German Auto Leases 8

Monthly Investor Report

Reporting Date: Oct 10, 2024
 Payment Date: Oct 21, 2024
 Period No.: 11
 Monthly Period: Sept, 2024
 Interest Period: Sept 20, 2024 to Oct 21, 2024
 = 31 days

9. Defaulted Amount & Recovery Amount

Collection Period		Number of Defaulted Agreements in Collection Period	Defaulted Amount in Collection Period	Aggregate Defaulted Amount Since Initial Cut-Off Date	Number of Tolerance Write-Offs*	Tolerance Write-Off Amount*	Aggregate Tolerance Write-Off Amount Since Initial Cut-Off Date *	Purchased Amount of New Receivables	Aggregate Amount of Purchased Receivables	Cum. Default Ratio (in % of Aggr. Amount of Purch. Rec.)	Recovery	Recovery Total	Recovery Total (in % of Aggr. Defaulted Amount)
Oct - 23	1	0	n/a	n/a	n/a	n/a	n/a	863,899,907.09	863,899,907.09	n/a	n/a	n/a	n/a
Nov - 23	2	0	0.00	0.00	0	0.00	0.00	25,083,927.35	888,983,834.44	0.00%	0.00	0.00	0.00%
Dec - 23	3	0	0.00	0.00	0	0.00	0.00	26,205,763.97	915,189,598.41	0.00%	0.00	0.00	0.00%
Jan - 24	4	0	0.00	0.00	0	0.00	0.00	63,155,059.17	978,344,657.58	0.00%	0.00	0.00	0.00%
Feb - 24	5	26	764.16	764.16	24	141.93	141.93	40,624,438.35	1,018,969,095.93	0.00%	0.00	0.00	0.00%
Mar - 24	6	21	19,626.01	20,390.17	15	0.15	142.08	41,022,904.82	1,059,992,000.75	0.00%	0.00	0.00	0.00%
Apr - 24	7	60	45,588.54	65,978.71	16	0.16	142.24	41,374,606.61	1,101,366,607.36	0.01%	4,247.57	4,247.57	6.44%
May - 24	8	38	282,806.68	348,785.39	7	0.07	142.31	41,636,357.56	1,143,002,964.92	0.03%	0.00	4,247.57	1.22%
June - 24	9	55	541,700.22	890,485.61	18	0.18	142.49	43,529,833.20	1,186,532,798.12	0.08%	4,961.71	9,209.28	1.03%
July - 24	10	63	544,078.59	1,434,564.20	19	6.72	149.21	44,773,388.11	1,231,306,186.23	0.12%	862.35	10,071.63	0.70%
Aug - 24	11	46	459,266.33	1,893,830.53	9	0.09	149.30	44,479,833.50	1,275,786,019.73	0.15%	12,861.59	22,933.22	1.21%
Sept - 24	12	61	425,672.11	2,319,502.64	21	0.21	149.51	46,371,193.26	1,322,157,212.99	0.18%	7,788.73	30,721.95	1.32%

* tolerance write-off amount <=10 EUR

Bavarian Sky S.A., Compartment German Auto Leases 8
Monthly Investor Report

Reporting Date: Oct 10, 2024
 Payment Date: Oct 21, 2024
 Period No.: 11
 Monthly Period: Sept, 2024
 Interest Period: Sept 20, 2024 to Oct 21, 2024
 = 31 days

9a. Defaulted Amount & Recovery Amount - Lease Level Data*

	Month / Year of Default	Month / Year of Lease Origination	Discounted Lease Balance (Initial)	Discounted Lease Balance at Default **	Recovery (Current Period)	Recovery Total	Discounted Lease Balance End of Period	Net Loss in %	Vehicle Type (New / Used)	Vehicle Class	Customer Type	Out of Deal (Month / Year)
52	July - 24	July - 21	3,759.42	1,029.93	1,035.94	1,035.94	-6.01	-0.16%	New	5 Series	Commercial	
53	July - 24	Aug - 21	2,851.39	2,573.40	0.00	0.00	2,573.40	90.25%	New	X2 Series	Commercial	
54	July - 24	Aug - 21	4,406.52	3,571.47	0.00	0.00	3,571.47	81.05%	New	3 Series	Commercial	
55	July - 24	Oct - 21	5,233.42	3,483.88	0.00	0.00	3,483.88	66.57%	New	3 Series	Commercial	
56	July - 24	Nov - 21	5,451.58	3,311.47	0.00	0.00	3,311.47	60.74%	New	3 Series	Commercial	
57	July - 24	Jan - 22	7,022.06	5,172.58	0.00	0.00	5,172.58	73.66%	New	3 Series	Commercial	
58	July - 24	Jan - 22	12,786.73	12,288.53	0.00	0.00	12,288.53	96.10%	New	5 Series	Commercial	
59	July - 24	Jan - 22	4,478.50	4,310.70	0.00	0.00	4,310.70	96.25%	New	X3 Series	Private Individual	
60	July - 24	Feb - 22	4,840.20	4,669.20	0.00	0.00	4,669.20	96.47%	New	MINI Clubman	Commercial	
61	July - 24	Mar - 22	6,551.48	5,086.88	0.00	0.00	5,086.88	77.64%	New	3 Series	Commercial	
62	July - 24	May - 22	13,404.31	8,431.27	478.54	478.54	7,952.73	59.33%	New	X1 Series	Commercial	
63	July - 24	June - 22	36,735.07	33,023.25	0.00	0.00	33,023.25	89.90%	New	4 Series	Commercial	
64	July - 24	June - 22	23,235.39	22,834.80	0.00	0.00	22,834.80	98.28%	New	5 Series	Commercial	
65	July - 24	July - 22	9,789.27	8,930.31	0.00	0.00	8,930.31	91.23%	New	3 Series	Commercial	
66	July - 24	July - 22	6,499.67	6,053.23	0.00	0.00	6,053.23	93.13%	New	MINI Hatch	Commercial	
67	July - 24	July - 22	9,573.20	8,422.47	0.00	0.00	8,422.47	87.98%	New	MINI Hatch	Commercial	
68	July - 24	Sept - 22	12,103.63	11,337.15	0.00	0.00	11,337.15	93.67%	New	3 Series	Commercial	
69	July - 24	Oct - 22	21,468.85	19,343.43	1,977.05	1,977.05	17,366.38	80.89%	New	X5 Series	Commercial	
70	July - 24	Oct - 22	7,725.19	4,229.54	0.00	0.00	4,229.54	54.75%	New	2 Series	Commercial	
71	July - 24	Nov - 22	36,116.27	30,993.73	0.00	0.00	30,993.73	85.82%	New	X5 Series	Commercial	
72	July - 24	Nov - 22	9,195.59	8,288.80	0.00	0.00	8,288.80	90.14%	New	MINI Hatch	Commercial	
73	July - 24	Dec - 22	27,970.06	21,964.13	967.88	967.88	20,996.25	75.07%	New	6 Series	Commercial	
74	July - 24	Jan - 23	18,479.21	16,043.16	0.00	0.00	16,043.16	86.82%	New	1 Series	Private Individual	
75	July - 24	Jan - 23	13,013.10	13,102.95	274.79	274.79	12,828.16	98.58%	New	8 Series	Commercial	
76	July - 24	Mar - 23	7,681.81	7,686.58	0.00	0.00	7,686.58	100.06%	New	1 Series	Commercial	
77	July - 24	Mar - 23	11,582.98	10,164.96	0.00	0.00	10,164.96	87.76%	New	3 Series	Commercial	
78	July - 24	Mar - 23	23,023.07	22,197.77	0.00	0.00	22,197.77	96.42%	New	5 Series	Commercial	
79	July - 24	Apr - 23	25,865.14	24,958.53	0.00	0.00	24,958.53	96.49%	New	X6 Series	Commercial	
80	July - 24	June - 23	17,404.59	17,218.61	0.00	0.00	17,218.61	98.93%	New	4 Series	Private Individual	
81	July - 24	June - 23	17,105.56	16,009.03	0.00	0.00	16,009.03	93.59%	Used	X3 Series	Commercial	
82	July - 24	June - 23	28,213.11	25,494.16	0.00	0.00	25,494.16	90.36%	New	4 Series	Commercial	
83	July - 24	July - 23	73,583.94	74,804.05	0.00	0.00	74,804.05	101.66%	New	7 Series	Commercial	

Bavarian Sky S.A., Compartment German Auto Leases 8

Monthly Investor Report

Reporting Date: Oct 10, 2024
 Payment Date: Oct 21, 2024
 Period No.: 11
 Monthly Period: Sept, 2024
 Interest Period: Sept 20, 2024 to Oct 21, 2024
 = 31 days

9a. Defaulted Amount & Recovery Amount - Lease Level Data*

	Month / Year of Default	Month / Year of Lease Origination	Discounted Lease Balance (Initial)	Discounted Lease Balance at Default **	Recovery (Current Period)	Recovery Total	Discounted Lease Balance End of Period	Net Loss in %	Vehicle Type (New / Used)	Vehicle Class	Customer Type	Out of Deal (Month / Year)
84	July - 24	Aug - 23	20,159.74	20,501.77	0.00	0.00	20,501.77	101.70%	New	2 Series	Commercial	
85	July - 24	Aug - 23	25,731.81	26,182.47	0.00	0.00	26,182.47	101.75%	New	X1 Series	Commercial	
86	July - 24	Sept - 23	11,441.05	10,034.01	0.00	0.00	10,034.01	87.70%	New	MINI Hatch	Commercial	
87	July - 24	Nov - 23	26,697.68	24,770.15	0.00	7,746.18	17,023.97	63.77%	New	4 Series	Private Individual	
88	Aug - 24	Dec - 20	7,416.40	5,866.37	0.00	0.00	5,866.37	79.10%	New	X3 Series	Commercial	
89	Aug - 24	May - 21	8,357.97	7,265.50	0.00	0.00	7,265.50	86.93%	New	2 Series	Commercial	
90	Aug - 24	Sept - 21	4,931.89	3,084.91	0.00	0.00	3,084.91	62.55%	New	MINI Hatch	Commercial	
91	Aug - 24	Nov - 21	11,196.46	7,710.54	0.00	0.00	7,710.54	68.87%	New	6 Series	Commercial	
92	Aug - 24	Nov - 21	8,357.16	4,383.85	0.00	0.00	4,383.85	52.46%	New	4 Series	Commercial	
93	Aug - 24	Nov - 21	3,036.13	1,863.05	0.00	0.00	1,863.05	61.36%	New	1 Series	Commercial	
94	Aug - 24	Mar - 22	12,925.76	8,486.67	0.00	0.00	8,486.67	65.66%	New	5 Series	Commercial	
95	Aug - 24	Mar - 22	7,653.16	6,030.17	0.00	0.00	6,030.17	78.79%	New	3 Series	Commercial	
96	Aug - 24	May - 22	4,523.91	3,632.89	0.00	0.00	3,632.89	80.30%	New	X1 Series	Commercial	
97	Aug - 24	July - 22	9,573.20	8,454.10	0.00	0.00	8,454.10	88.31%	New	MINI Hatch	Commercial	
98	Aug - 24	July - 22	5,462.24	4,823.71	0.00	0.00	4,823.71	88.31%	New	MINI Hatch	Commercial	
99	Aug - 24	July - 22	13,848.56	11,557.99	0.00	0.00	11,557.99	83.46%	New	X3 Series	Commercial	
100	Aug - 24	Aug - 22	36,211.48	34,303.40	0.00	0.00	34,303.40	94.73%	Used	7 Series	Commercial	
101	Aug - 24	Sept - 22	11,879.54	11,262.58	0.00	0.00	11,262.58	94.81%	New	X1 Series	Commercial	
102	Aug - 24	Sept - 22	11,676.27	8,800.55	0.00	0.00	8,800.55	75.37%	New	MINI Hatch	Commercial	
103	Aug - 24	Oct - 22	18,477.86	16,752.33	0.00	0.00	16,752.33	90.66%	New	Z4 Series	Commercial	
104	Aug - 24	Nov - 22	24,909.21	23,330.22	0.00	0.00	23,330.22	93.66%	New	X6 Series	Commercial	
105	Aug - 24	Nov - 22	9,195.59	8,322.50	0.00	0.00	8,322.50	90.51%	New	MINI Hatch	Commercial	
106	Aug - 24	Dec - 22	17,393.78	16,626.35	0.00	0.00	16,626.35	95.59%	New	5 Series	Commercial	
107	Aug - 24	Dec - 22	19,729.30	15,612.79	0.00	0.00	15,612.79	79.14%	New	X5 Series	Commercial	
108	Aug - 24	Feb - 23	27,426.43	24,230.74	0.00	0.00	24,230.74	88.35%	New	X5 Series	Commercial	
109	Aug - 24	Feb - 23	24,744.65	23,407.32	0.00	0.00	23,407.32	94.60%	New	X3 Series	Commercial	
110	Aug - 24	Mar - 23	20,242.84	19,544.44	0.00	0.00	19,544.44	96.55%	New	5 Series	Commercial	
111	Aug - 24	Mar - 23	27,045.99	26,031.05	0.00	0.00	26,031.05	96.25%	New	4 Series	Commercial	
112	Aug - 24	Mar - 23	10,541.15	10,450.77	0.00	0.00	10,450.77	99.14%	New	MINI Hatch	Commercial	
113	Aug - 24	May - 23	17,179.46	17,639.84	0.00	0.00	17,639.84	102.68%	New	8 Series	Commercial	
114	Aug - 24	July - 23	13,710.28	12,209.33	0.00	0.00	12,209.33	89.05%	Used	X3 Series	Commercial	
115	Aug - 24	July - 23	21,998.82	20,294.64	0.00	0.00	20,294.64	92.25%	New	X3 Series	Commercial	

Bavarian Sky S.A., Compartment German Auto Leases 8

Monthly Investor Report

Reporting Date: Oct 10, 2024
 Payment Date: Oct 21, 2024
 Period No.: 11
 Monthly Period: Sept, 2024
 Interest Period: Sept 20, 2024 to Oct 21, 2024
 = 31 days

9a. Defaulted Amount & Recovery Amount - Lease Level Data*

	Month / Year of Default	Month / Year of Lease Origination	Discounted Lease Balance (Initial)	Discounted Lease Balance at Default **	Recovery (Current Period)	Recovery Total	Discounted Lease Balance End of Period	Net Loss in %	Vehicle Type (New / Used)	Vehicle Class	Customer Type	Out of Deal (Month / Year)
116	Aug - 24	Aug - 23	35,783.63	35,049.72	0.00	0.00	35,049.72	97.95%	New	3 Series	Commercial	
117	Aug - 24	Aug - 23	33,207.33	33,257.02	0.00	0.00	33,257.02	100.15%	New	X5 Series	Commercial	
118	Aug - 24	Sept - 23	25,826.27	23,588.18	0.00	0.00	23,588.18	91.33%	New	5 Series	Commercial	
119	Sept - 24	May - 21	6,373.04	4,418.68	0.00	0.00	4,418.68	69.33%	New	X2 Series	Commercial	
120	Sept - 24	June - 21	10,167.16	3,168.13	0.00	0.00	3,168.13	31.16%	New	X5 Series	Commercial	
121	Sept - 24	Nov - 21	7,881.23	2,096.93	0.00	0.00	2,096.93	26.61%	New	X5 Series	Commercial	
122	Sept - 24	Apr - 22	7,866.53	5,344.31	0.00	0.00	5,344.31	67.94%	New	X3 Series	Commercial	
123	Sept - 24	May - 22	3,737.69	2,520.98	0.00	0.00	2,520.98	67.45%	New	MINI Clubman	Private Individual	
124	Sept - 24	June - 22	35,434.53	29,775.52	0.00	0.00	29,775.52	84.03%	New	4 Series	Commercial	
125	Sept - 24	July - 22	12,471.32	8,369.89	0.00	0.00	8,369.89	67.11%	New	3 Series	Commercial	
126	Sept - 24	Aug - 22	6,854.58	4,360.18	0.00	0.00	4,360.18	63.61%	New	1 Series	Private Individual	
127	Sept - 24	Sept - 22	17,971.73	15,149.31	0.00	0.00	15,149.31	84.30%	New	X6 Series	Private Individual	
128	Sept - 24	Sept - 22	23,424.42	18,861.97	0.00	0.00	18,861.97	80.52%	New	X5 Series	Commercial	
129	Sept - 24	Sept - 22	18,367.79	16,513.41	0.00	0.00	16,513.41	89.90%	Used	4 Series	Commercial	
130	Sept - 24	Sept - 22	14,309.96	12,251.89	0.00	0.00	12,251.89	85.62%	New	3 Series	Commercial	
131	Sept - 24	Sept - 22	5,084.51	4,363.17	0.00	0.00	4,363.17	85.81%	New	MINI Hatch	Commercial	
132	Sept - 24	Oct - 22	7,062.10	5,811.99	0.00	0.00	5,811.99	82.30%	New	2 Series	Private Individual	
133	Sept - 24	Dec - 22	10,486.27	8,678.30	0.00	0.00	8,678.30	82.76%	New	3 Series	Commercial	
134	Sept - 24	Feb - 23	18,860.83	17,331.51	0.00	0.00	17,331.51	91.89%	New	3 Series	Commercial	
135	Sept - 24	Mar - 23	14,783.41	13,189.68	0.00	0.00	13,189.68	89.22%	New	X2 Series	Commercial	
136	Sept - 24	Mar - 23	12,190.04	11,793.78	0.00	0.00	11,793.78	96.75%	New	1 Series	Commercial	
137	Sept - 24	Mar - 23	22,074.33	20,166.05	0.00	0.00	20,166.05	91.36%	New	4 Series	Commercial	
138	Sept - 24	Mar - 23	30,291.86	23,417.62	0.00	0.00	23,417.62	77.31%	Used	X5 Series	Commercial	
139	Sept - 24	May - 23	11,278.24	10,166.22	0.00	0.00	10,166.22	90.14%	Used	X1 Series	Commercial	
140	Sept - 24	June - 23	47,685.08	43,281.67	0.00	0.00	43,281.67	90.77%	New	X5 Series	Commercial	
141	Sept - 24	June - 23	20,544.25	20,114.01	0.00	0.00	20,114.01	97.91%	New	X4 Series	Commercial	
142	Sept - 24	July - 23	72,894.13	69,064.30	0.00	0.00	69,064.30	94.75%	New	7 Series	Commercial	
143	Sept - 24	July - 23	25,569.09	20,654.17	0.00	0.00	20,654.17	80.78%	New	4 Series	Commercial	
144	Sept - 24	Aug - 23	10,031.14	9,202.44	0.00	0.00	9,202.44	91.74%	New	MINI Hatch	Commercial	
145	Sept - 24	Sept - 23	16,479.93	15,211.60	0.00	0.00	15,211.60	92.30%	New	3 Series	Commercial	

*Applicable only if leases have defaulted. Does not include defaulted amounts less than 10 EUR.



Bavarian Sky S.A., Compartment German Auto Leases 8
Monthly Investor Report

Reporting Date:	Oct 10, 2024
Payment Date:	Oct 21, 2024
Period No.:	11
Monthly Period:	Sept, 2024
Interest Period:	Sept 20, 2024 to Oct 21, 2024 = 31 days

**This amount mostly includes proceeds from vehicle sale.

Bavarian Sky S.A., Compartment German Auto Leases 8
Monthly Investor Report

Reporting Date: Oct 10, 2024
 Payment Date: Oct 21, 2024
 Period No.: 11
 Monthly Period: Sept, 2024
 Interest Period: Sept 20, 2024 to Oct 21, 2024
 = 31 days

9b. Defaulted Amount & Recovery Amount - Lease Level Data* (Out of Deal)

	Month / Year of Default	Month / Year of Lease Origination	Discounted Lease Balance (Initial)	Discounted Lease Balance at Default **	Recovery (Current Period)	Recovery Total	Discounted Lease Balance End of Period	Net Loss in %	Vehicle Type (New / Used)	Vehicle Class	Customer Type	Out of Deal (Month / Year)
96	Sept - 24	Aug - 21	4,992.79	92.96	0.00	0.00	92.96	1.86%	New	3 Series	Commercial	Sept - 24

* Applicable only if leases have defaulted. Does not include defaulted amounts less than 10 EUR.

** This amount mostly includes proceeds from vehicle sale.

*** Only contracts of the current reporting period and the previous period are displayed.

Bavarian Sky S.A., Compartment German Auto Leases 8

Monthly Investor Report

Reporting Date:	Oct 10, 2024
Payment Date:	Oct 21, 2024
Period No.:	11
Monthly Period:	Sept, 2024
Interest Period:	Sept 20, 2024 to Oct 21, 2024 = 31 days

10. Outstanding Notes Balance

1. Note Balance	All Notes	Class A	Class B
Initial Note Information			
ISIN code		XS2701658937	XS2701659158
Currency		EUR	EUR
Legal final maturity		Nov 2031	Nov 2031
Rating (Fitch Moody's S&P DBRS)		AAA Aaa N/A AAA	N/A N/A N/A N/A
Initial notes aggregate principal outstanding balance	863,900,000.00	800,000,000.00	63,900,000.00
Nominal amount per note (in EUR)		100,000.00	100,000.00
Initial number of notes per class (in EUR)		8,000	639
Current Note Information			
Notes aggregate principal outstanding balance - BoP (in EUR)	863,900,000.00	800,000,000.00	63,900,000.00
Available distribution amount (in EUR)	60,508,553.47		
Additional purchase price	46,371,193.26		
Redemption per class (in EUR)		0.00	0.00
Redemption per note (in EUR)		0.00	0.00
Notes aggregate principal outstanding balance - EoP (in EUR)	863,900,000.00	800,000,000.00	63,900,000.00
Current pool factor		1.00	1.00

2. Payments to Investor per Note	Class A	Class B
Interest Type	Floating Rate	Fixed Rate
Reference Rate	1M_EURIBOR	NONE
Actual Interest Rate	3.398%	NONE
Spread	0.450%	0.00%
Coupon	3.848%	3.00%
Day count fraction	Actual/360	Actual/360
Interest days	31 days	31 days
Principal outstanding per note in EUR - BoP	100,000.00	100,000.00
Principal repayment per note in EUR	0.00	0.00
Principal outstanding per note in EUR - EoP	100,000.00	100,000.00
Interest payment per Note in EUR	331.36	258.33

3. Credit Enhancement	Initial Period	Initial CE	Current Period	Current CE
Class A	800,000,000.00	8.50%	800,000,000.00	8.50%
Class B	63,900,000.00	1.10%	63,900,000.00	1.10%
Cash Reserve (+ Overcollateralisation)	9,502,900.00	-	9,502,900.00	-

BMW Bank GmbH complies with the retention requirement of a material net economic interest in accordance with article 6 of the Securitisation Regulation. A minimum of 5.0% of the net economic interest will be retained on an ongoing basis in form of retention of the Class B Notes and Subordinated Loan.

**Bavarian Sky S.A., Compartment German Auto Leases 8
Monthly Investor Report**

Reporting Date:	Oct 10, 2024
Payment Date:	Oct 21, 2024
Period No.:	11
Monthly Period:	Sept, 2024
Interest Period:	Sept 20, 2024 to Oct 21, 2024 = 31 days

10. Outstanding Notes Balance (Cont')**Clean-up Call Option**

If the current aggregate discounted outstanding lease balance is less than 10.00% of the initial aggregate discounted outstanding lease balance on the issue date or if all outstanding Class A notes are repaid in full, the seller will have the option under the lease receivables purchase agreement to demand from the issuer the resale of all outstanding purchased lease receivables.

Current aggregate discounted outstanding lease balance at end of period	863,899,978.60
Clean-up option exercisable	No

Bavarian Sky S.A., Compartment German Auto Leases 8
Monthly Investor Report

Reporting Date:	Oct 10, 2024
Payment Date:	Oct 21, 2024
Period No.:	11
Monthly Period:	Sept, 2024
Interest Period:	Sept 20, 2024 to Oct 21, 2024 = 31 days

11. Initial Aggregate Lease Balance

Initial Portfolio

Group in EUR	Initial Aggregate Lease Balance in EUR	Initial Aggregate Lease Balance in %	Number of Contracts	Number of Contracts in %
0,00 - 5.000,00	6,773,623.67	0.45%	1,861	2.69%
5.000,01 - 10.000,00	69,970,722.03	4.68%	8,866	12.82%
10.000,01 - 15.000,00	161,132,783.05	10.77%	12,853	18.58%
15.000,01 - 20.000,00	212,971,098.28	14.24%	12,199	17.64%
20.000,01 - 25.000,00	242,297,131.62	16.20%	10,811	15.63%
25.000,01 - 30.000,00	229,430,140.60	15.34%	8,388	12.13%
30.000,01 - 35.000,00	181,836,580.73	12.15%	5,631	8.14%
35.000,01 - 40.000,00	127,563,075.08	8.53%	3,423	4.95%
40.000,01 - 45.000,00	78,376,366.60	5.24%	1,855	2.68%
45.000,01 - 50.000,00	55,176,068.55	3.69%	1,167	1.69%
50.000,01 - 55.000,00	37,923,374.47	2.53%	725	1.05%
55.000,01 - 60.000,00	28,788,626.88	1.92%	502	0.73%
> 60.000,00	63,803,333.69	4.26%	887	1.28%
Total	1,496,042,925.25	100.00%	69,168	100.00%

WA: 21,629.12
MIN : 598.40
MAX: 128,841.60

Bavarian Sky S.A., Compartment German Auto Leases 8
Monthly Investor Report

Reporting Date:	Oct 10, 2024
Payment Date:	Oct 21, 2024
Period No.:	11
Monthly Period:	Sept, 2024
Interest Period:	Sept 20, 2024 to Oct 21, 2024 = 31 days

11. Initial Aggregate Lease Balance (Cont')

Current Portfolio:

Group in EUR	Initial Aggregate Lease Balance in EUR	Initial Aggregate Lease Balance in %	Number of Contracts	Number of Contracts in %
0,00 - 5.000,00	7,912,869.48	0.41%	2,101	2.39%
5.000,01 - 10.000,00	90,787,129.06	4.71%	11,464	13.06%
10.000,01 - 15.000,00	208,181,722.16	10.79%	16,672	18.99%
15.000,01 - 20.000,00	258,794,164.25	13.41%	14,844	16.91%
20.000,01 - 25.000,00	295,127,233.28	15.30%	13,154	14.98%
25.000,01 - 30.000,00	289,628,179.76	15.01%	10,583	12.05%
30.000,01 - 35.000,00	233,570,668.02	12.11%	7,235	8.24%
35.000,01 - 40.000,00	165,644,878.23	8.59%	4,445	5.06%
40.000,01 - 45.000,00	105,408,623.34	5.46%	2,494	2.84%
45.000,01 - 50.000,00	75,891,686.60	3.93%	1,605	1.83%
50.000,01 - 55.000,00	55,901,659.89	2.90%	1,068	1.22%
55.000,01 - 60.000,00	42,273,850.29	2.19%	737	0.84%
> 60.000,00	100,055,817.80	5.19%	1,391	1.58%
Total	1,929,178,482.16	100.00	87,793	100.00%

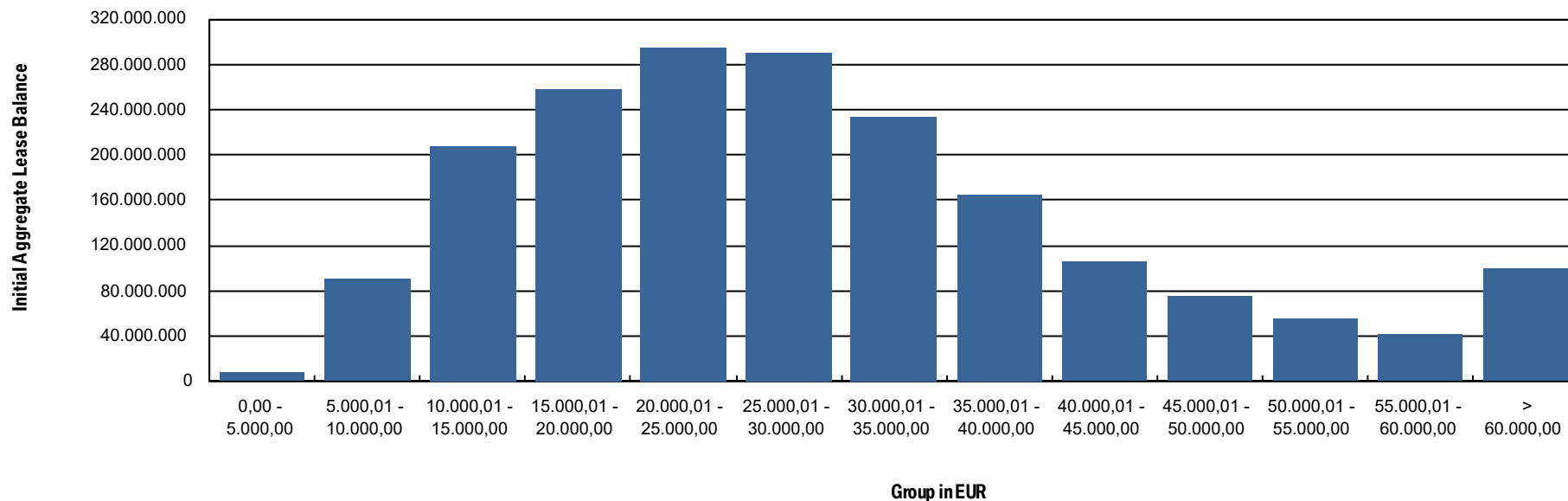
WA: 21,974.17
 MIN : 806.72
 MAX: 142,112.64

Bavarian Sky S.A., Compartment German Auto Leases 8
Monthly Investor Report

Reporting Date:	Oct 10, 2024
Payment Date:	Oct 21, 2024
Period No.:	11
Monthly Period:	Sept, 2024
Interest Period:	Sept 20, 2024 to Oct 21, 2024 = 31 days

11.a Initial Aggregate Lease Balance (Graph)

Current Portfolio:



Bavarian Sky S.A., Compartment German Auto Leases 8
Monthly Investor Report

Reporting Date:	Oct 10, 2024
Payment Date:	Oct 21, 2024
Period No.:	11
Monthly Period:	Sept, 2024
Interest Period:	Sept 20, 2024 to Oct 21, 2024 = 31 days

12. Aggregate Discounted Lease Balance

Initial Portfolio

Group in EUR	Current Aggregate Discounted Lease Balance in EUR	Current Aggregate Discounted Lease Balance in %	Number of Contracts	Number of Contracts in %
0,00 - 5.000,00	46,674,779.95	5.40%	16,954	24.51%
5.000,01 - 10.000,00	127,520,577.04	14.76%	17,096	24.72%
10.000,01 - 15.000,00	158,456,993.15	18.34%	12,846	18.57%
15.000,01 - 20.000,00	158,092,203.62	18.30%	9,112	13.17%
20.000,01 - 25.000,00	137,155,627.04	15.88%	6,155	8.90%
25.000,01 - 30.000,00	89,444,822.92	10.35%	3,293	4.76%
30.000,01 - 35.000,00	49,733,312.30	5.76%	1,548	2.24%
35.000,01 - 40.000,00	33,056,327.57	3.83%	885	1.28%
40.000,01 - 45.000,00	21,492,241.68	2.49%	508	0.73%
45.000,01 - 50.000,00	14,069,948.07	1.63%	298	0.43%
50.000,01 - 55.000,00	10,260,239.31	1.19%	197	0.28%
55.000,01 - 60.000,00	5,952,387.20	0.69%	104	0.15%
> 60.000,00	11,990,447.24	1.39%	172	0.25%
Total	863,899,907.09	100.00%	69,168	100.00%

WA: 12,489.88
 MIN : 125.61
 MAX: 107,883.30

Bavarian Sky S.A., Compartment German Auto Leases 8
Monthly Investor Report

Reporting Date:	Oct 10, 2024
Payment Date:	Oct 21, 2024
Period No.:	11
Monthly Period:	Sept, 2024
Interest Period:	Sept 20, 2024 to Oct 21, 2024 = 31 days

12. Aggregate Discounted Lease Balance (Cont')

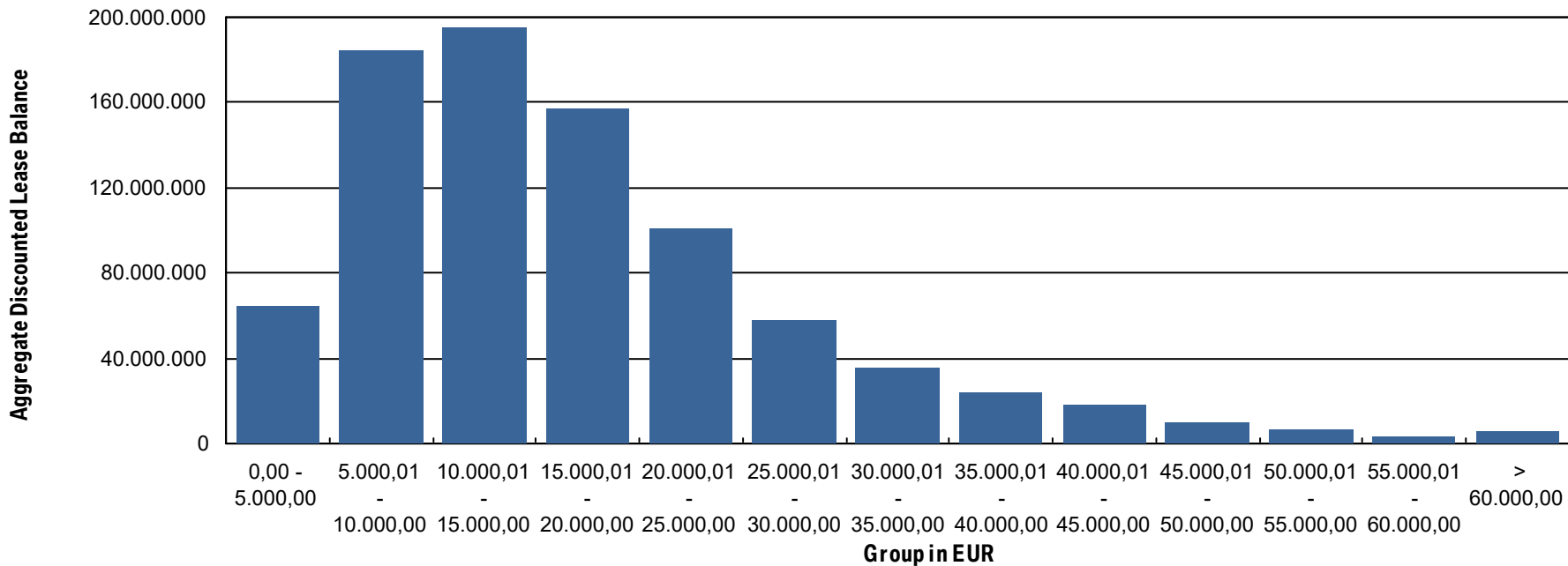
Current Portfolio:

Group in EUR	Current Aggregate Discounted Lease Balance in EUR	Current Aggregate Discounted Lease Balance in %	Number of Contracts	Number of Contracts in %
0,00 - 5.000,00	64,871,071.21	7.51%	28,466	32.42%
5.000,01 - 10.000,00	184,172,805.71	21.32%	25,012	28.49%
10.000,01 - 15.000,00	195,325,447.72	22.61%	15,881	18.09%
15.000,01 - 20.000,00	157,134,452.95	18.19%	9,103	10.37%
20.000,01 - 25.000,00	100,729,929.20	11.66%	4,545	5.18%
25.000,01 - 30.000,00	57,889,037.48	6.70%	2,125	2.42%
30.000,01 - 35.000,00	35,855,891.28	4.15%	1,110	1.26%
35.000,01 - 40.000,00	23,855,841.60	2.76%	639	0.73%
40.000,01 - 45.000,00	18,378,513.80	2.13%	434	0.49%
45.000,01 - 50.000,00	10,108,913.32	1.17%	214	0.24%
50.000,01 - 55.000,00	6,321,857.06	0.73%	121	0.14%
55.000,01 - 60.000,00	3,083,066.64	0.36%	54	0.06%
> 60.000,00	6,173,150.63	0.71%	89	0.10%
Total	863,899,978.60	100.00%	87,793	100.00%

WA: 9,840.19
 MIN : 0.00
 MAX: 95,882.54

12.a Aggregate Discounted Lease Balance (Graph)

Current Portfolio:



Bavarian Sky S.A., Compartment German Auto Leases 8
Monthly Investor Report

Reporting Date:	Oct 10, 2024
Payment Date:	Oct 21, 2024
Period No.:	11
Monthly Period:	Sept, 2024
Interest Period:	Sept 20, 2024 to Oct 21, 2024 = 31 days

13. Lessee Concentration

Current Portfolio:

Lessee	Current Aggregate Discounted Lease Balance in EUR	Current Aggregate Discounted Lease Balance in %	Number of Contracts	Number of Contracts in %
1	451,339.93	0.05%	44	0.05%
2	436,630.71	0.05%	76	0.09%
3	414,125.47	0.05%	77	0.09%
4	411,507.20	0.05%	33	0.04%
5	407,633.01	0.05%	60	0.07%
6	341,496.90	0.04%	44	0.05%
7	335,133.14	0.04%	21	0.02%
8	333,130.81	0.04%	58	0.07%
9	297,667.62	0.03%	26	0.03%
10	237,303.98	0.03%	34	0.04%
11	233,320.23	0.03%	19	0.02%
12	232,561.88	0.03%	23	0.03%
13	228,622.19	0.03%	12	0.01%
14	221,431.84	0.03%	17	0.02%
15	220,795.46	0.03%	48	0.05%
16	214,343.93	0.02%	24	0.03%
17	213,856.63	0.02%	19	0.02%
18	208,979.74	0.02%	39	0.04%
19	207,121.50	0.02%	27	0.03%
20	201,494.36	0.02%	24	0.03%
Total	5,848,496.53	0.68%	725	0.81%
Total Portfolio Balance :	863,899,978.60			

Bavarian Sky S.A., Compartment German Auto Leases 8
Monthly Investor Report

Reporting Date:	Oct 10, 2024
Payment Date:	Oct 21, 2024
Period No.:	11
Monthly Period:	Sept, 2024
Interest Period:	Sept 20, 2024 to Oct 21, 2024 = 31 days

14. Geographical Distribution

Initial Portfolio

Group in Region	Current Aggregate Discounted Lease Balance in EUR	Current Aggregate Discounted Lease Balance in %	Number of Contracts	Number of Contracts in %
Post Code Area 0	36,018,113.74	4.17%	2,657	3.84%
Post Code Area 1	45,841,541.04	5.31%	3,632	5.25%
Post Code Area 2	81,074,031.66	9.38%	6,357	9.19%
Post Code Area 3	71,792,602.99	8.31%	5,593	8.09%
Post Code Area 4	116,649,602.83	13.50%	9,332	13.49%
Post Code Area 5	96,671,425.90	11.19%	7,957	11.50%
Post Code Area 6	99,531,416.07	11.52%	8,270	11.96%
Post Code Area 7	107,327,218.75	12.42%	8,700	12.58%
Post Code Area 8	127,910,577.72	14.81%	10,233	14.79%
Post Code Area 9	81,083,376.39	9.39%	6,437	9.31%
Total	863,899,907.09	100.00%	69,168	100.00%

Bavarian Sky S.A., Compartment German Auto Leases 8
Monthly Investor Report

Reporting Date:	Oct 10, 2024
Payment Date:	Oct 21, 2024
Period No.:	11
Monthly Period:	Sept, 2024
Interest Period:	Sept 20, 2024 to Oct 21, 2024 = 31 days

14. Geographical Distribution (Cont')

Current Portfolio:

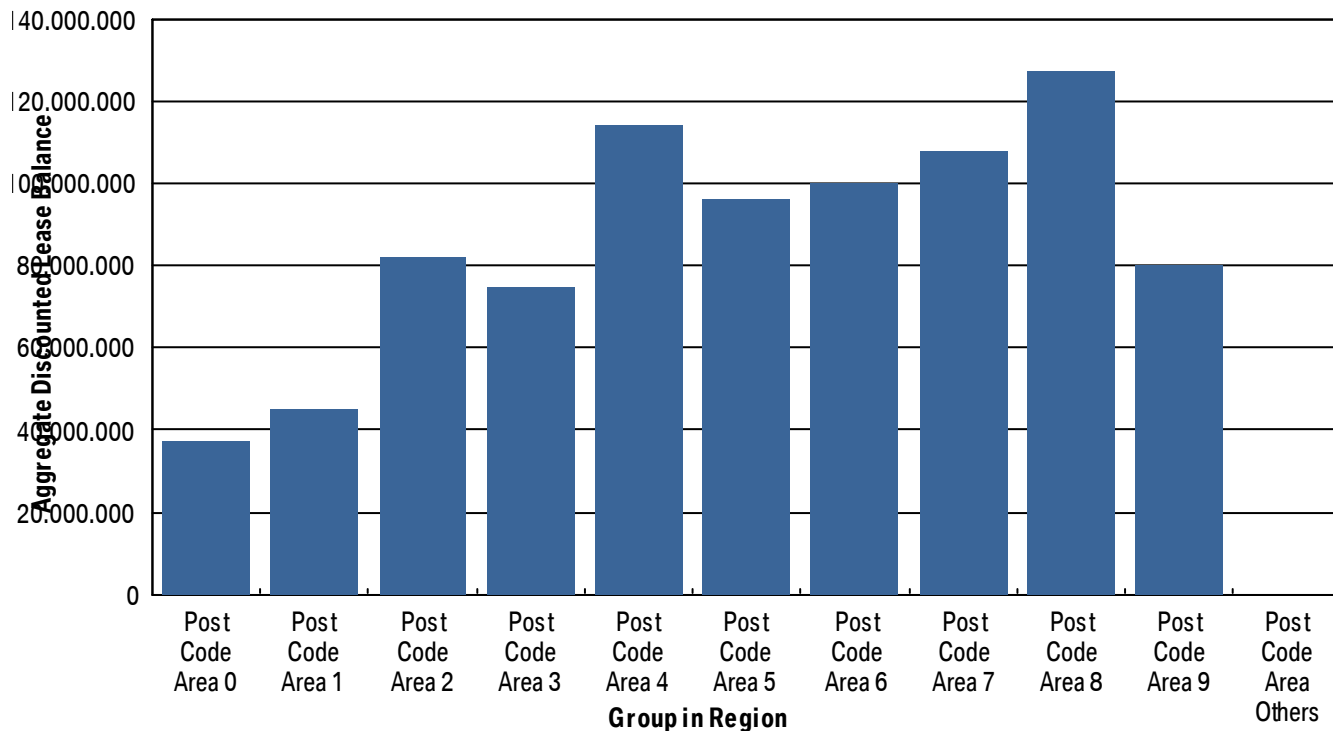
Group in Region	Current Aggregate Discounted Lease Balance in EUR	Current Aggregate Discounted Lease Balance in %	Number of Contracts	Number of Contracts in %
Post Code Area 0	37,547,751.03	4.35%	3,530	4.02%
Post Code Area 1	44,919,475.58	5.20%	4,519	5.15%
Post Code Area 2	81,811,242.39	9.47%	8,186	9.32%
Post Code Area 3	74,721,638.42	8.65%	7,534	8.58%
Post Code Area 4	114,191,403.96	13.22%	11,600	13.21%
Post Code Area 5	95,887,845.42	11.10%	10,135	11.54%
Post Code Area 6	99,774,883.86	11.55%	10,369	11.81%
Post Code Area 7	107,643,797.29	12.46%	11,034	12.57%
Post Code Area 8	127,141,381.54	14.72%	12,773	14.55%
Post Code Area 9	80,210,252.36	9.28%	8,106	9.23%
Post Code Area Others	50,306.75	0.01%	7	0.01%
Total	863,899,978.60	100.00%	87,793	100.00%

Bavarian Sky S.A., Compartment German Auto Leases 8
Monthly Investor Report

Reporting Date: Oct 10, 2024
 Payment Date: Oct 21, 2024
 Period No.: 11
 Monthly Period: Sept, 2024
 Interest Period: Sept 20, 2024 to Oct 21, 2024
 = 31 days

14.a Geographical Distribution (Graph)

Current Portfolio:



Bavarian Sky S.A., Compartment German Auto Leases 8
Monthly Investor Report

Reporting Date:	Oct 10, 2024
Payment Date:	Oct 21, 2024
Period No.:	11
Monthly Period:	Sept, 2024
Interest Period:	Sept 20, 2024 to Oct 21, 2024 = 31 days

15. Object Type

Initial Portfolio

Vehicle Type *	Current Aggregate Discounted Lease Balance in EUR	Current Aggregate Discounted Lease Balance in %	Number of Contracts	Number of Contracts in %
New	855,733,209.31	99.05%	68,539	99.09%
Used	8,166,697.78	0.95%	629	0.91%
Total	863,899,907.09	100.00%	69,168	100.00%

*New Car: include, for the avoidance of doubt, demonstration cars.

Customer Type **	Current Aggregate Discounted Lease Balance in EUR	Current Aggregate Discounted Lease Balance in %	Number of Contracts	Number of Contracts in %
Commercial	650,297,348.55	75.27%	46,202	66.80%
Private Individual	213,602,558.54	24.73%	22,966	33.20%
Total	863,899,907.09	100.00%	69,168	100.00%

** Private: include, for the avoidance of doubt, self-employed individuals.

Bavarian Sky S.A., Compartment German Auto Leases 8
Monthly Investor Report

Reporting Date:	Oct 10, 2024
Payment Date:	Oct 21, 2024
Period No.:	11
Monthly Period:	Sept, 2024
Interest Period:	Sept 20, 2024 to Oct 21, 2024 = 31 days

15. Object Type (Cont')

Current Portfolio

Vehicle Type *	Current Aggregate Discounted Lease Balance in EUR	Current Aggregate Discounted Lease Balance in %	Number of Contracts	Number of Contracts in %
New	852,581,431.62	98.69%	86,468	98.49%
Used	11,318,546.98	1.31%	1,325	1.51%
Total	863,899,978.60	100.00%	87,793	100.00%

*New Car: include, for the avoidance of doubt, demonstration cars.

Customer Type **	Current Aggregate Discounted Lease Balance in EUR	Current Aggregate Discounted Lease Balance in %	Number of Contracts	Number of Contracts in %
Commercial	625,527,557.92	72.41%	55,477	63.19%
Private Individual	238,372,420.68	27.59%	32,316	36.81%
Total	863,899,978.60	100.00%	87,793	100.00%

** Private: include, for the avoidance of doubt, self-employed individuals.

Bavarian Sky S.A., Compartment German Auto Leases 8
Monthly Investor Report

Reporting Date:	Oct 10, 2024
Payment Date:	Oct 21, 2024
Period No.:	11
Monthly Period:	Sept, 2024
Interest Period:	Sept 20, 2024 to Oct 21, 2024 = 31 days

16. Fuel Type

Current Portfolio

Fuel Type	Current Aggregate Discounted Lease Balance in EUR	Current Aggregate Discounted Lease Balance in %	Number of Contracts	Number of Contracts in %
B	316,587,049.09	36.65%	35,946	40.94%
D	237,715,971.46	27.52%	21,182	24.13%
E	155,181,919.01	17.96%	14,879	16.95%
X	134,036,384.42	15.52%	13,038	14.85%
Y	20,378,654.62	2.36%	2,748	3.13%
Total	863,899,978.60	100.00%	87,793	100.00%

B = Petrol; D = Diesel; E = Electric; G = LPG, H = Hydrogen; M = Methane; T = Ethanol; X = Hybrid-Petrol; Y = Hybrid-Diesel; Z = Hydrogen-Electric; U = Undefined.

Bavarian Sky S.A., Compartment German Auto Leases 8
Monthly Investor Report

Reporting Date:	Oct 10, 2024
Payment Date:	Oct 21, 2024
Period No.:	11
Monthly Period:	Sept, 2024
Interest Period:	Sept 20, 2024 to Oct 21, 2024 = 31 days

17. Delinquencies

Initial Portfolio

Days Past Due	Current Aggregate Discounted Lease Balance in EUR	Current Aggregate Discounted Lease Balance in %	Number of Contracts	Number of Contracts in %
1 - 30	0.00	0.00%	0	0.00%
31 - 60	0.00	0.00%	0	0.00%
61 - 90	0.00	0.00%	0	0.00%
91 - 120	0.00	0.00%	0	0.00%
> 120	0.00	0.00%	0	0.00%
Total	0.00	0.00%	0	0.00%

Current Portfolio

Days Past Due	Current Aggregate Discounted Lease Balance in EUR	Current Aggregate Discounted Lease Balance in %	Number of Contracts	Number of Contracts %
1 - 30	2,286,479.92	0.26%	192	0.22%
31 - 60	1,203,924.83	0.14%	101	0.12%
61 - 90	646,769.74	0.07%	45	0.05%
91 - 120	443,477.37	0.05%	30	0.03%
> 120	776,270.03	0.09%	66	0.08%
Total	5,356,921.89	0.62%	434	0.49%

Bavarian Sky S.A., Compartment German Auto Leases 8
Monthly Investor Report

Reporting Date: Oct 10, 2024
 Payment Date: Oct 21, 2024
 Period No.: 11
 Monthly Period: Sept, 2024
 Interest Period: Sept 20, 2024 to Oct 21, 2024
 = 31 days

17.a Delinquency Analysis

Monthly Period	Performing in EUR	Delinquencies			
		31-60 Days Past Due in EUR	61-90 Days Past Due in EUR	91-120 Days Past Due in EUR	>120 Days Past Due in EUR
Nov - 23	863,899,995.09	0.00	0.00	0.00	0.00
Dec - 23	862,809,630.87	1,090,313.85	0.00	0.00	0.00
Jan - 24	862,676,082.90	493,425.46	730,436.26	0.00	0.00
Feb - 24	862,140,025.48	695,082.12	438,963.74	625,869.33	0.00
Mar - 24	861,614,966.93	815,650.64	514,514.27	361,474.78	593,378.72
Apr - 24	861,308,871.97	721,508.53	531,881.72	418,130.33	919,557.97
May - 24	861,216,412.53	632,530.34	485,524.83	483,675.29	1,081,824.96
June - 24	861,031,010.43	1,053,988.69	373,082.32	435,719.55	1,006,182.80
July - 24	861,440,434.40	508,627.69	728,037.40	329,702.31	893,191.71
Aug - 24	861,144,976.04	984,365.29	499,162.20	510,545.52	760,909.90
Sept - 24	860,829,536.63	1,203,924.83	646,769.74	443,477.37	776,270.03

Bavarian Sky S.A., Compartment German Auto Leases 8
Monthly Investor Report

Reporting Date:	Oct 10, 2024
Payment Date:	Oct 21, 2024
Period No.:	11
Monthly Period:	Sept, 2024
Interest Period:	Sept 20, 2024 to Oct 21, 2024 = 31 days

18. Seasoning

Initial Portfolio

Group in Months	Current Aggregate Discounted Lease Balance in EUR	Current Aggregate Discounted Lease Balance in %	Number of Contracts	Number of Contracts in %
<= 6	360,365,293.05	41.71%	19,478	28.16%
> 6 - <= 12	263,264,688.11	30.47%	16,804	24.29%
> 12 - <= 24	188,579,674.26	21.83%	18,706	27.04%
> 24 - <= 36	48,218,655.44	5.58%	12,998	18.79%
> 36 - <= 42	2,960,066.87	0.34%	916	1.32%
> 42 - <= 48	468,553.95	0.05%	252	0.36%
> 48 - <= 53	42,975.41	0.00%	14	0.02%
> 53	0.00	0.00%	0	0.00%
Total	863,899,907.09	100.00%	69,168	100.00%

WA: 9.88
MIN : 2.00
MAX: 53.00

Bavarian Sky S.A., Compartment German Auto Leases 8
Monthly Investor Report

Reporting Date:	Oct 10, 2024
Payment Date:	Oct 21, 2024
Period No.:	11
Monthly Period:	Sept, 2024
Interest Period:	Sept 20, 2024 to Oct 21, 2024 = 31 days

18. Seasoning (Cont')

Current Portfolio

Group in Months	Current Aggregate Discounted Lease Balance in EUR	Current Aggregate Discounted Lease Balance in %	Number of Contracts	Number of Contracts in %
<= 6	70,620,023.11	8.17%	4,133	4.71%
> 6 - <= 12	201,060,671.45	23.27%	13,950	15.89%
> 12 - <= 24	505,014,745.07	58.46%	44,568	50.76%
> 24 - <= 36	80,694,709.95	9.34%	21,487	24.47%
> 36 - <= 42	5,322,894.99	0.62%	2,474	2.82%
> 42 - <= 48	1,133,170.00	0.13%	1,112	1.27%
> 48 - <= 53	42,882.74	0.00%	59	0.07%
> 53	10,881.29	0.00%	10	0.01%
Total	863,899,978.60	100.00%	87,793	100.00%

WA: 15.65
MIN : 2.00
MAX: 63.00

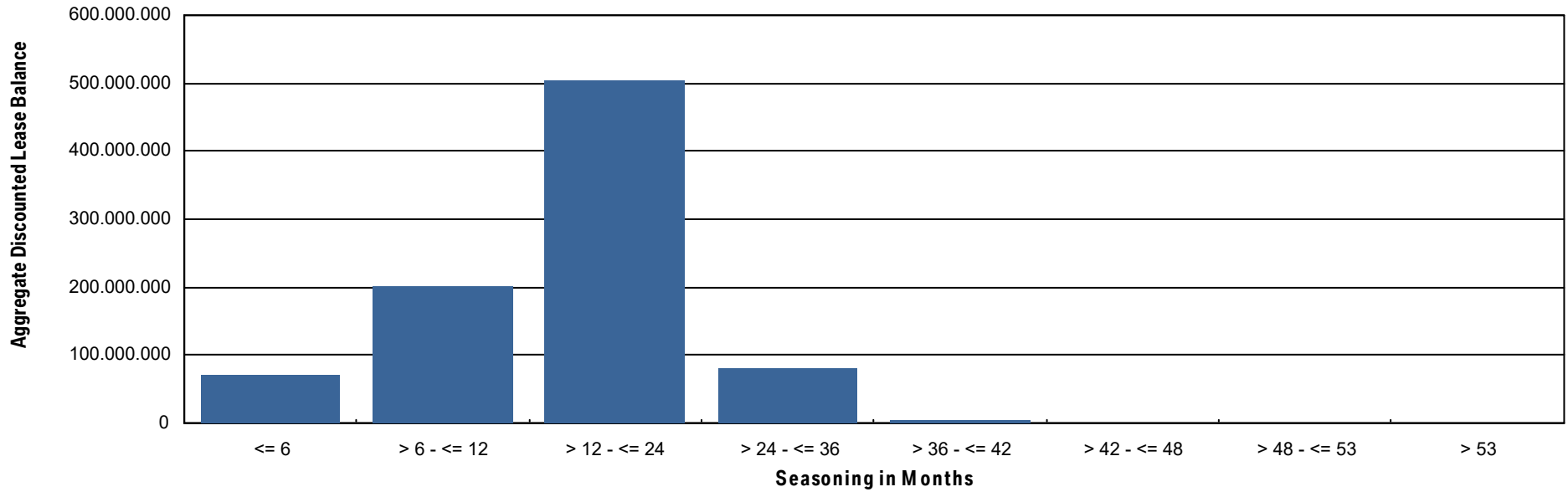


Bavarian Sky S.A., Compartment German Auto Leases 8
Monthly Investor Report

Reporting Date: Oct 10, 2024
Payment Date: Oct 21, 2024
Period No.: 11
Monthly Period: Sept, 2024
Interest Period: Sept 20, 2024 to Oct 21, 2024
= 31 days

18.a Seasoning (Graph)

Current Portfolio



Bavarian Sky S.A., Compartment German Auto Leases 8
Monthly Investor Report

Reporting Date: Oct 10, 2024
 Payment Date: Oct 21, 2024
 Period No.: 11
 Monthly Period: Sept, 2024
 Interest Period: Sept 20, 2024 to Oct 21, 2024
 = 31 days

19. Remaining Term

Initial Portfolio

Group in Months	Current Aggregate Discounted Lease Balance in EUR	Current Aggregate Discounted Lease Balance in %	Number of Contracts	Number of Contracts in %
<= 6	12,395,423.48	1.43%	6,045	8.74%
> 6 - <= 12	38,484,253.73	4.45%	9,012	13.03%
> 12 - <= 24	187,204,220.58	21.67%	18,767	27.13%
> 24 - <= 36	437,803,460.28	50.68%	26,345	38.09%
> 36 - <= 42	87,307,598.91	10.11%	4,505	6.51%
> 42 - <= 48	99,278,151.61	11.49%	4,439	6.42%
> 48 - <= 53	669,212.96	0.08%	30	0.04%
> 53	757,585.54	0.09%	25	0.04%
Total	863,899,907.09	100.00%	69,168	100.00%

WA: 29.42
 MIN : 3.00
 MAX: 58.00

Bavarian Sky S.A., Compartment German Auto Leases 8
Monthly Investor Report

Reporting Date:	Oct 10, 2024
Payment Date:	Oct 21, 2024
Period No.:	11
Monthly Period:	Sept, 2024
Interest Period:	Sept 20, 2024 to Oct 21, 2024 = 31 days

19. Remaining Term (Cont')

Current Portfolio

Group in Months	Current Aggregate Discounted Lease Balance in EUR	Current Aggregate Discounted Lease Balance in %	Number of Contracts	Number of Contracts in %
<= 6	18,206,786.60	2.11%	14,506	16.52%
> 6 - <= 12	62,271,882.28	7.21%	11,999	13.67%
> 12 - <= 24	371,407,825.21	42.99%	35,648	40.60%
> 24 - <= 36	344,587,166.79	39.89%	22,609	25.75%
> 36 - <= 42	54,456,090.96	6.30%	2,490	2.84%
> 42 - <= 48	12,541,241.48	1.45%	529	0.60%
> 48 - <= 53	249,567.60	0.03%	7	0.01%
> 53	179,417.68	0.02%	5	0.01%
Total	863,899,978.60	100.00%	87,793	100.00%

WA : 24.20
MIN : 0.00
MAX: 55,00

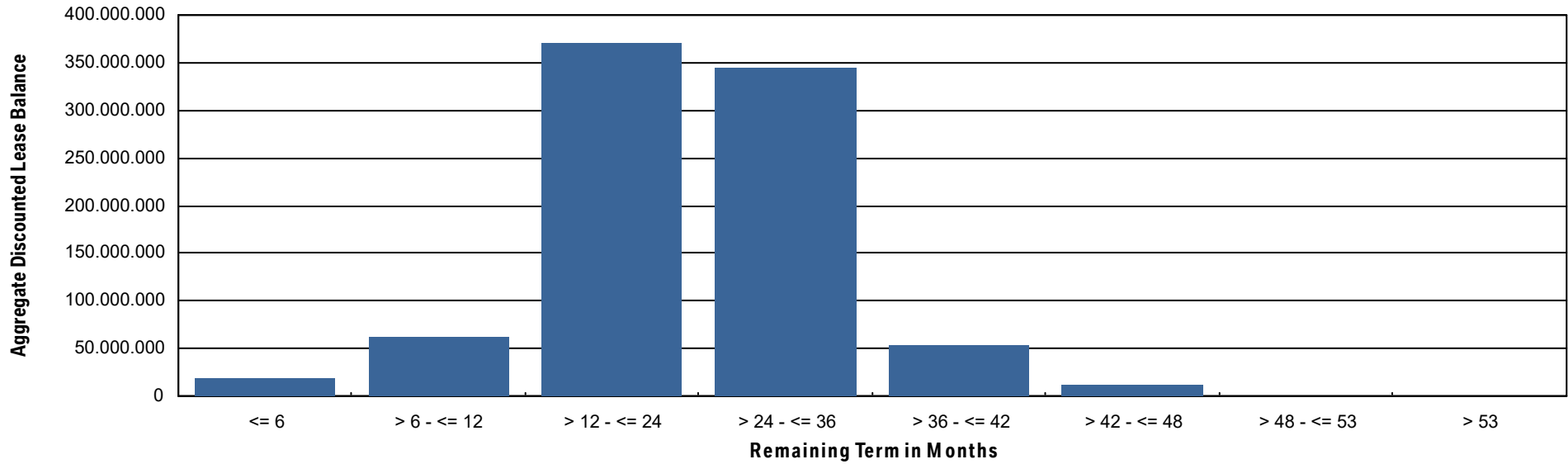


Bavarian Sky S.A., Compartment German Auto Leases 8
Monthly Investor Report

Reporting Date: Oct 10, 2024
Payment Date: Oct 21, 2024
Period No.: 11
Monthly Period: Sept, 2024
Interest Period: Sept 20, 2024 to Oct 21, 2024
= 31 days

19.a Remaining Term (Graph)

Current Portfolio



Bavarian Sky S.A., Compartment German Auto Leases 8
Monthly Investor Report

Reporting Date:	Oct 10, 2024
Payment Date:	Oct 21, 2024
Period No.:	11
Monthly Period:	Sept, 2024
Interest Period:	Sept 20, 2024 to Oct 21, 2024 = 31 days

20. Original Term

Initial Portfolio

Group in Months	Current Aggregate Discounted Lease Balance in EUR	Current Aggregate Discounted Lease Balance in %	Number of Contracts	Number of Contracts in %
<= 6	3,271.94	0.00%	2	0.00%
> 6 - <= 12	515,722.27	0.06%	174	0.25%
> 12 - <= 24	15,534,450.99	1.80%	2,265	3.27%
> 24 - <= 36	580,232,528.06	67.16%	50,239	72.63%
> 36 - <= 42	17,388,726.10	2.01%	2,085	3.01%
> 42 - <= 48	248,346,113.08	28.75%	14,297	20.67%
> 48 - <= 53	20,997.95	0.00%	8	0.01%
> 53	1,858,096.70	0.22%	98	0.14%
Total	863,899,907.09	100.00%	69,168	100.00%

WA : 39.30
MIN : 6.00
MAX : 60.00

Bavarian Sky S.A., Compartment German Auto Leases 8
Monthly Investor Report

Reporting Date: Oct 10, 2024
 Payment Date: Oct 21, 2024
 Period No.: 11
 Monthly Period: Sept, 2024
 Interest Period: Sept 20, 2024 to Oct 21, 2024
 = 31 days

20. Original Term (Cont')

Current Portfolio

Group in Months	Current Aggregate Discounted Lease Balance in EUR	Current Aggregate Discounted Lease Balance in %	Number of Contracts	Number of Contracts in %
<= 6	0.00	0.00%	1	0.00%
> 6 - <= 12	183,401.03	0.02%	128	0.15%
> 12 - <= 24	15,393,178.08	1.78%	3,497	3.98%
> 24 - <= 36	545,221,911.66	63.11%	60,382	68.78%
> 36 - <= 42	14,618,244.52	1.69%	2,966	3.38%
> 42 - <= 48	285,569,876.57	33.06%	20,576	23.44%
> 48 - <= 53	35,986.83	0.00%	55	0.06%
> 53	2,877,379.91	0.33%	188	0.21%
Total	863,899,978.60	100.00%	87,793	100.00%

WA : 39,85
 MIN : 6.00
 MAX: 66.00

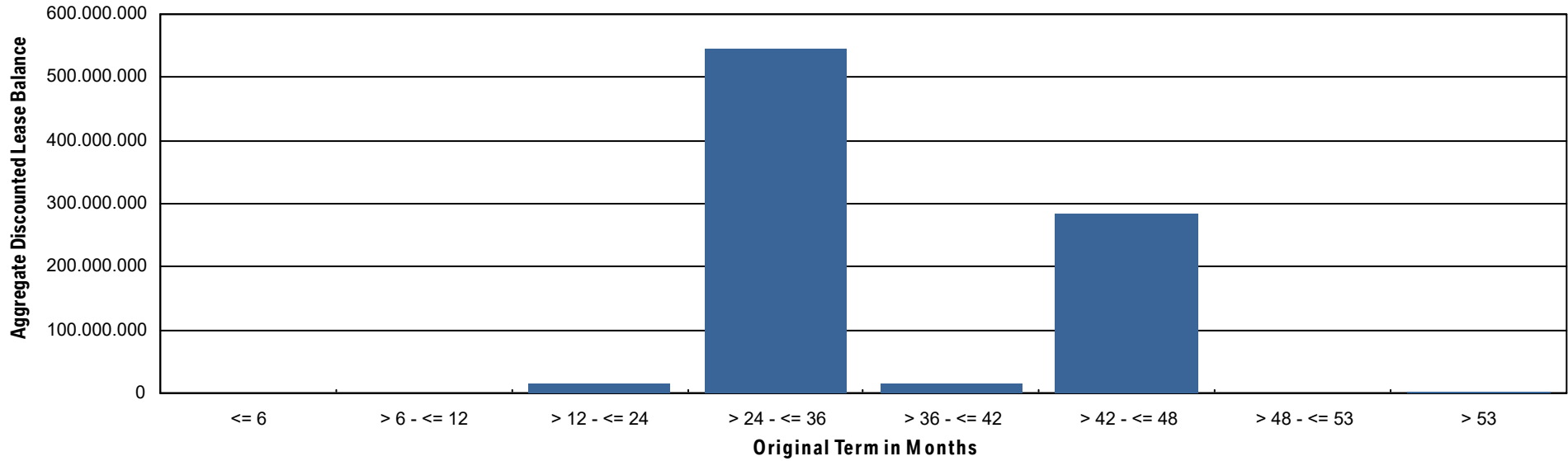


Bavarian Sky S.A., Compartment German Auto Leases 8
Monthly Investor Report

Reporting Date: Oct 10, 2024
Payment Date: Oct 21, 2024
Period No.: 11
Monthly Period: Sept, 2024
Interest Period: Sept 20, 2024 to Oct 21, 2024
= 31 days

20.a Original Term (Graph)

Current Portfolio



Bavarian Sky S.A., Compartment German Auto Leases 8
Monthly Investor Report

Reporting Date:	Oct 10, 2024
Payment Date:	Oct 21, 2024
Period No.:	11
Monthly Period:	Sept, 2024
Interest Period:	Sept 20, 2024 to Oct 21, 2024 = 31 days

21. Vehicle Class

Initial Portfolio

Group in Vehicle Class	Current Aggregate Discounted Lease Balance in EUR	Current Aggregate Discounted Lease Balance in %	Number of Contracts	Number of Contracts in %
BMW 1 Series	41,054,394.73	4.75%	6,605	9.55%
BMW 2 Series	33,944,649.16	3.93%	3,489	5.04%
BMW 3 Series	113,175,092.82	13.10%	10,718	15.50%
BMW 4 Series	75,947,576.38	8.79%	4,110	5.94%
BMW 5 Series	89,708,623.58	10.38%	5,975	8.64%
BMW 6 Series	1,870,264.84	0.22%	104	0.15%
BMW 7 Series	9,301,577.78	1.08%	361	0.52%
BMW 8 Series	14,922,072.32	1.73%	535	0.77%
BMW Group Others	3,613,527.23	0.42%	254	0.37%
BMW i3 Series	3,894,288.95	0.45%	855	1.24%
BMW i8 Series	16,222.74	0.00%	1	0.00%
BMW iX	20,959,502.34	2.43%	712	1.03%
BMW X1 Series	76,719,928.20	8.88%	6,163	8.91%
BMW X2 Series	12,272,635.08	1.42%	1,382	2.00%
BMW X3 Series	126,058,109.31	14.59%	9,376	13.56%
BMW X4 Series	19,588,338.72	2.27%	1,215	1.76%
BMW X5 Series	99,258,692.70	11.49%	4,688	6.78%
BMW X6 Series	16,815,895.80	1.95%	744	1.08%
BMW X7 Series	16,037,269.05	1.86%	596	0.86%
BMW XM	1,405,320.90	0.16%	19	0.03%
BMW Z4 Series	7,190,009.28	0.83%	616	0.89%
MINI Clubman	6,190,154.99	0.72%	788	1.14%
MINI Hatch	73,955,760.19	8.56%	9,862	14.26%
Total	863,899,907.09	100.00%	69,168	100.00%

Bavarian Sky S.A., Compartment German Auto Leases 8
Monthly Investor Report

Reporting Date:	Oct 10, 2024
Payment Date:	Oct 21, 2024
Period No.:	11
Monthly Period:	Sept, 2024
Interest Period:	Sept 20, 2024 to Oct 21, 2024 = 31 days

21. Vehicle Class (Cont')

Current Portfolio

Group in Vehicle Class	Current Aggregate Discounted Lease Balance in EUR	Current Aggregate Discounted Lease Balance in %	Number of Contracts	Number of Contracts in %
BMW 1 Series	41,957,550.23	4.86%	7,936	9.04%
BMW 2 Series	35,475,569.06	4.11%	4,604	5.24%
BMW 3 Series	104,085,543.13	12.05%	11,189	12.74%
BMW 4 Series	85,043,248.06	9.84%	6,332	7.21%
BMW 5 Series	77,183,132.41	8.93%	6,840	7.79%
BMW 5 Series 1005	466,102.39	0.05%	18	0.02%
BMW 6 Series	1,630,676.71	0.19%	117	0.13%
BMW 7 Series	11,749,436.94	1.36%	486	0.55%
BMW 8 Series	13,556,835.47	1.57%	612	0.70%
BMW Group Others	3,803,674.93	0.44%	350	0.40%
BMW i3 Series	3,453,675.97	0.40%	1,063	1.21%
BMW i8 Series	55,998.55	0.01%	3	0.00%
BMW iX	23,776,602.74	2.75%	1,265	1.44%
BMW X1 Series	90,300,809.45	10.45%	9,375	10.68%
BMW X2 Series	10,942,120.20	1.27%	1,656	1.89%
BMW X3 Series	120,592,183.07	13.96%	11,709	13.34%
BMW X4 Series	18,581,285.59	2.15%	1,507	1.72%
BMW X5 Series	96,457,565.69	11.17%	5,602	6.38%
BMW X6 Series	15,138,705.23	1.75%	837	0.95%
BMW X7 Series	16,799,294.18	1.94%	734	0.84%
BMW XM	2,829,080.94	0.33%	52	0.06%
BMW Z4 Series	7,370,683.83	0.85%	805	0.92%
MINI Clubman	5,739,302.63	0.66%	952	1.08%
MINI Cooper 2000	181,330.71	0.02%	22	0.03%
MINI Countryman	846,441.43	0.10%	67	0.08%
MINI Hatch	75,883,129.06	8.78%	13,660	15.56%
Total	863,899,978.60	100.00%	87,793	100.00%

Bavarian Sky S.A., Compartment German Auto Leases 8
Monthly Investor Report

Reporting Date:	Oct 10, 2024
Payment Date:	Oct 21, 2024
Period No.:	11
Monthly Period:	Sept, 2024
Interest Period:	Sept 20, 2024 to Oct 21, 2024 = 31 days

22. Payment Type

Initial Portfolio

Group in Payment Type	Current Aggregate Discounted Lease Balance in EUR	Current Aggregate Discounted Lease Balance in %	Number of Contracts	Number of Contracts in %
Direct Debit	861,005,445.48	99.66%	68,932	99.66%
Self Payment	2,894,461.61	0.34%	236	0.34%
Total	863,899,907.09	100.00%	69,168	100.00%

Current Portfolio

Group in Payment Type	Current Aggregate Discounted Lease Balance in EUR	Current Aggregate Discounted Lease Balance in %	Number of Contracts	Number of Contracts in %
Direct Debit	857,775,717.51	99.29%	87,200	99.32%
Self Payment	6,124,261.09	0.71%	593	0.68%
Total	863,899,978.60	100.00%	87,793	100.00%

Bavarian Sky S.A., Compartment German Auto Leases 8
Monthly Investor Report

Reporting Date:	Oct 10, 2024
Payment Date:	Oct 21, 2024
Period No.:	11
Monthly Period:	Sept, 2024
Interest Period:	Sept 20, 2024 to Oct 21, 2024 = 31 days

23. Contracts Per Lessee

Initial Portfolio

Number of Contracts	Current Aggregate Discounted Lease Balance in EUR	Current Aggregate Discounted Lease Balance in %	Number of Contracts	Number of Contracts in %
1	615,338,715.17	71.23%	50,184	72.55%
2 - 4	194,164,326.40	22.48%	14,110	20.40%
5 - 7	30,130,436.56	3.49%	2,570	3.72%
8 - 10	10,248,458.04	1.19%	882	1.28%
> 10	14,017,970.92	1.62%	1,422	2.06%
Total	863,899,907.09	100.00%	69,168	100.00%

Current Portfolio

Number of Contracts	Current Aggregate Discounted Lease Balance in EUR	Current Aggregate Discounted Lease Balance in %	Number of Contracts	Number of Contracts in %
1	619,152,227.56	71.67%	64,707	73.70%
2 - 4	189,824,019.22	21.97%	17,045	19.41%
5 - 7	29,835,812.29	3.45%	2,932	3.34%
8 - 10	9,912,211.14	1.15%	1,132	1.29%
> 10	15,175,708.39	1.76%	1,977	2.25%
Total	863,899,978.60	100.00%	87,793	100.00%

Bavarian Sky S.A., Compartment German Auto Leases 8
Monthly Investor Report

Reporting Date:	Oct 10, 2024
Payment Date:	Oct 21, 2024
Period No.:	11
Monthly Period:	Sept, 2024
Interest Period:	Sept 20, 2024 to Oct 21, 2024 = 31 days

24. Replenishment Conditions

Current Portfolio

Replenishment Condition	Current Aggregate Discounted Lease Balance in EUR	Current Aggregate Discounted Lease Balance in %	Limit of Aggregate Discounted Lease Balance	Condition met?
Single Borrower Limit	451,339.93	0.05 %	<= 1,000,000.00	yes
Commercial Customer Limit	625,527,557.92	72.41 %	<= 77.00 %	yes

Bavarian Sky S.A., Compartment German Auto Leases 8

Monthly Investor Report

Reporting Date:	Oct 10, 2024
Payment Date:	Oct 21, 2024
Period No.:	11
Monthly Period:	Sept, 2024
Interest Period:	Sept 20, 2024 to Oct 21, 2024 = 31 days

25. Amortisation

Initial Portfolio

Period	Month / Year	Principal Balance in EUR
0	Oct, 2023	863,899,907.09
1	Nov, 2023	829,606,661.61
2	Dec, 2023	795,113,371.19
3	Jan, 2024	760,736,706.75
4	Feb, 2024	726,824,907.19
5	Mar, 2024	693,451,763.90
6	Apr, 2024	660,785,162.00
7	May, 2024	628,687,865.54
8	June, 2024	597,166,845.83
9	July, 2024	566,274,000.98
10	Aug, 2024	535,918,313.89
11	Sept, 2024	506,043,625.83
12	Oct, 2024	476,754,770.04
13	Nov, 2024	448,053,451.18
14	Dec, 2024	420,026,831.27
15	Jan, 2025	392,511,026.37
16	Feb, 2025	365,458,540.23
17	Mar, 2025	338,970,987.19
18	Apr, 2025	313,198,343.78
19	May, 2025	288,047,726.27
20	June, 2025	263,649,050.69
21	July, 2025	240,044,424.15
22	Aug, 2025	217,307,724.69
23	Sept, 2025	195,563,161.75
24	Oct, 2025	174,845,058.33
25	Nov, 2025	155,409,200.25
26	Dec, 2025	137,625,034.97
27	Jan, 2026	120,962,632.87
28	Feb, 2026	105,137,185.30
29	Mar, 2026	90,359,429.28
30	Apr, 2026	76,932,390.42

Current Portfolio

Period	Month / Year	Principal Balance in EUR	Reduction in EUR
11	Sept, 2024	863,899,978.60	
12	Oct, 2024	818,638,767.38	45,261,211.22
13	Nov, 2024	775,702,201.73	42,936,565.65
14	Dec, 2024	733,669,917.95	42,032,283.78
15	Jan, 2025	692,335,070.93	41,334,847.02
16	Feb, 2025	651,609,584.99	40,725,485.94
17	Mar, 2025	611,576,279.57	40,033,305.42
18	Apr, 2025	572,412,347.10	39,163,932.47
19	May, 2025	533,973,315.12	38,439,031.98
20	June, 2025	496,397,092.73	37,576,222.39
21	July, 2025	459,717,412.23	36,679,680.50
22	Aug, 2025	424,018,751.94	35,698,660.29
23	Sept, 2025	389,441,855.66	34,576,896.28
24	Oct, 2025	356,093,453.21	33,348,402.45
25	Nov, 2025	324,272,213.05	31,821,240.16
26	Dec, 2025	294,501,300.10	29,770,912.95
27	Jan, 2026	266,106,435.30	28,394,864.80
28	Feb, 2026	238,671,388.44	27,435,046.86
29	Mar, 2026	212,437,005.07	26,234,383.37
30	Apr, 2026	187,776,351.98	24,660,653.09
31	May, 2026	164,493,089.65	23,283,262.33
32	June, 2026	143,014,540.47	21,478,549.18
33	July, 2026	123,786,137.63	19,228,402.84
34	Aug, 2026	106,805,472.55	16,980,665.08
35	Sept, 2026	91,819,343.90	14,986,128.65
36	Oct, 2026	78,094,812.14	13,724,531.76
37	Nov, 2026	65,828,279.43	12,266,532.71
38	Dec, 2026	55,548,524.00	10,279,755.43
39	Jan, 2027	46,511,358.12	9,037,165.88
40	Feb, 2027	38,247,261.74	8,264,096.38
41	Mar, 2027	30,904,222.03	7,343,039.71

Bavarian Sky S.A., Compartment German Auto Leases 8
Monthly Investor Report

Reporting Date: Oct 10, 2024
 Payment Date: Oct 21, 2024
 Period No.: 11
 Monthly Period: Sept, 2024
 Interest Period: Sept 20, 2024 to Oct 21, 2024
 = 31 days

25. Amortisation

Initial Portfolio

Period	Month / Year	Principal Balance in EUR
31	May, 2026	64,703,804.84
32	June, 2026	54,037,382.17
33	July, 2026	45,333,428.45
34	Aug, 2026	38,570,899.84
35	Sept, 2026	33,184,830.91
36	Oct, 2026	28,087,021.25
37	Nov, 2026	23,368,718.64
38	Dec, 2026	19,168,063.56
39	Jan, 2027	15,340,340.43
40	Feb, 2027	11,764,501.99
41	Mar, 2027	8,554,957.67
42	Apr, 2027	5,826,149.50
43	May, 2027	3,489,795.89
44	June, 2027	1,731,257.77
45	July, 2027	649,347.03
46	Aug, 2027	219,268.75
47	Sept, 2027	186,911.83
48	Oct, 2027	156,022.77
49	Nov, 2027	127,902.28
50	Dec, 2027	103,348.24
51	Jan, 2028	82,190.19
52	Feb, 2028	63,031.08
53	Mar, 2028	46,875.82
54	Apr, 2028	32,086.27
55	May, 2028	19,985.34
56	June, 2028	8,683.52
57	July, 2028	961.52
58	Aug, 2028	0.00

Current Portfolio

Period	Month / Year	Principal Balance in EUR	Reduction in EUR
42	Apr, 2027	24,649,567.63	6,254,654.40
43	May, 2027	19,193,322.31	5,456,245.32
44	June, 2027	14,703,204.48	4,490,117.83
45	July, 2027	11,201,895.35	3,501,309.13
46	Aug, 2027	8,520,433.58	2,681,461.77
47	Sept, 2027	6,448,608.66	2,071,824.92
48	Oct, 2027	4,729,489.12	1,719,119.54
49	Nov, 2027	3,364,552.49	1,364,936.63
50	Dec, 2027	2,398,008.62	966,543.87
51	Jan, 2028	1,668,987.34	729,021.28
52	Feb, 2028	1,093,982.91	575,004.43
53	Mar, 2028	668,238.94	425,743.97
54	Apr, 2028	386,314.28	281,924.66
55	May, 2028	202,280.28	184,034.00
56	June, 2028	95,766.03	106,514.25
57	July, 2028	55,856.38	39,909.65
58	Aug, 2028	43,195.53	12,660.85
59	Sept, 2028	32,999.86	10,195.67
60	Oct, 2028	24,994.01	8,005.85
61	Nov, 2028	19,824.96	5,169.05
62	Dec, 2028	14,868.42	4,956.54
63	Jan, 2029	9,883.01	4,985.41
64	Feb, 2029	5,313.16	4,569.85
65	Mar, 2029	2,018.14	3,295.02
66	Apr, 2029	0.00	2,018.14
67	May, 2029	0.00	0.00
68	June, 2029	0.00	0.00
69	July, 2029	0.00	0.00

Bavarian Sky S.A., Compartment German Auto Leases 8
Monthly Investor Report

Reporting Date:	Oct 10, 2024
Payment Date:	Oct 21, 2024
Period No.:	11
Monthly Period:	Sept, 2024
Interest Period:	Sept 20, 2024 to Oct 21, 2024 = 31 days

26. Priority of Payments

All amounts in EUR

Available Distribution Amount	+	60,508,553.47
Taxes	-	0.00
Trustee Payment	-	0.00
Senior Expenses	-	279.22
Swap Net Payment	-	0.00
Class A Interest	-	2,650,880.00
Cash Reserve	-	9,502,900.00
Replenishment Amount	-	46,371,193.26
Class A Principal	-	0.00
Class B Interest	-	165,072.87
Class B Principal	-	0.00
Swap Termination Event	-	0.00
Subordinated Loan Interest	-	44,172.12
Subordinated Loan Principal	-	0.00
Seller	-	1,774,056.00

Bavarian Sky S.A., Compartment German Auto Leases 8
Monthly Investor Report

Reporting Date:	Oct 10, 2024
Payment Date:	Oct 21, 2024
Period No.:	11
Monthly Period:	Sept, 2024
Interest Period:	Sept 20, 2024 to Oct 21, 2024 = 31 days

27. Transaction Costs

Transaction Costs (in EUR)	Class A	Class B	Subordinated Loan	Total
Senior Expenses				279.22
Interest accrued for the Period	2,650,880.00	165,072.87	44,172.12	2,860,124.99
Interest payments for the Period	2,650,880.00	165,072.87	44,172.12	2,860,124.99
Cumulative Interest Payments	31,322,720.00	1,789,206.39	509,545.24	33,621,471.63
Unpaid Interest for the Period	0.00	0.00	0.00	0.00
Cumulative Unpaid Interest	0.00	0.00	0.00	0.00

Bavarian Sky S.A., Compartment German Auto Leases 8
Monthly Investor Report

Reporting Date:	Oct 10, 2024
Payment Date:	Oct 21, 2024
Period No.:	11
Monthly Period:	Sept, 2024
Interest Period:	Sept 20, 2024 to Oct 21, 2024 = 31 days

28. Ratings

		Fitch	S&P	Moodys	DBRS
Notes - current ratings					
	Class A	AAA	N/A	Aaa	AAA
	Class B	N/A	N/A	N/A	N/A

			Fitch	S&P	Moodys	DBRS	Trigger Breached
Transaction Parties - current ratings							
	BMW AG	Long Term	N/A	A	A2	N/A	
		Short Term	N/A	A-1	P-1	N/A	
Issuer Account Bank	The Bank of New York Mellon	Long Term	AA	N/A	Aa1	N/A	no
		Short Term	F1+	N/A	P-1	N/A	no
Swap Counterparty	Skandinaviska Enskilda Banken AB	Long Term	AA-	N/A	Aa2	A	no
		Short Term	F1+	N/A	P-1	N/A	no

			Fitch	S&P	Moodys	DBRS
Transaction Parties - required ratings						
Issuer Account Bank	The Bank of New York Mellon	Long Term	A	N/A	A2	A
		Short Term	F1	N/A	P-1	N/A
Swap Counterparty	Skandinaviska Enskilda Banken AB	Long Term	A	N/A	A3	A
		Short Term	F1	N/A	N/A	N/A

Bavarian Sky S.A., Compartment German Auto Leases 8

Monthly Investor Report

Reporting Date:	Oct 10, 2024
Payment Date:	Oct 21, 2024
Period No.:	11
Monthly Period:	Sept, 2024
Interest Period:	Sept 20, 2024 to Oct 21, 2024 = 31 days

29. Swap Information

Swap Counterparty	
Swap Counterparty	Skandinaviska Enskilda Banken AB (publ)
Swap Termination Event	No

Swap data	
Swap type	Fixed floating interest rate swap
Notional amount in EUR	800,000,000.00
Fix leg	
Fixed rate	3.485%
Payment in EUR (Bavarian Sky S.A., Compartment German Auto Leases 8 to Skandinaviska Enskilda Banken AB (publ))	2,323,173.33
Floating leg	
Floating rate (Euribor)	3.398%
Payment in EUR (Skandinaviska Enskilda Banken AB (publ) to Bavarian Sky S.A., Compartme	2,340,844.44
Net swap payment (in EUR)	17,671.11
- = from Bavarian Sky S.A., Compartment German Auto Leases 8 to Skandinaviska Enskilda Banken AB (publ)	
+ = from Skandinaviska Enskilda Banken AB (publ) to Bavarian Sky S.A., Compartment German Auto Leases 8)	