

**BMW
GROUP**



ROLLS-ROYCE
MOTOR CARS LTD

Bavarian Sky S.A., Compartment German Auto Leases 7

Monthly Investor Report - July 2024

Bavarian Sky S.A., Compartment German Auto Leases 7

Monthly Investor Report

Reporting Date:	Aug 09, 2024
Payment Date:	Aug 20, 2024
Period No.:	22
Monthly Period:	July, 2024
Interest Period:	July 22, 2024 to Aug 20, 2024 = 29 days

Index

1. Contact Information
2. Reporting Contact Details
3. Counterparty History
4. Overview Dates
5. Portfolio Information
6. Replenishment Fund / Reserves
7. Performance Data
8. Defaulted Amount & Recovery Amount
- 8.a Defaulted Amount & Recovery Amount -Lease Level Data
- 8.b Defaulted Amount & Recovery Amount -Lease Level Data (Out of Deal)
9. Outstanding Notes Balance
10. Initial Aggregate Lease Balance
- 10.a Initial Aggregate Lease Balance (Graph)
11. Aggregate Discounted Lease Balance
- 11.a Aggregate Discounted Lease Balance (Graph)
12. Lessee Concentration
13. Geographical Distribution
- 13.a Geographical Distribution (Graph)
14. Object Type
15. Fuel Type
16. Delinquencies
- 16.a Delinquency Analysis
17. Seasoning
- 17.a Seasoning (Graph)
18. Remaining Term
- 18.a Remaining Term (Graph)
19. Original Term
- 19.a Original Term (Graph)
20. Vehicle Class
21. Payment Type
22. Contracts per Lessee
23. Amortisation
24. Priority of Payments
25. Transaction Costs
26. Ratings
27. Swap Information

Bavarian Sky S.A., Compartment German Auto Leases 7
Monthly Investor Report

Reporting Date:	Aug 09, 2024
Payment Date:	Aug 20, 2024
Period No.:	22
Monthly Period:	July, 2024
Interest Period:	July 22, 2024 to Aug 20, 2024 = 29 days

1. Contact Information

Issuer: **Bavarian Sky S.A.**
Acting in respect of its Compartment German Auto Leases 7
287-289 route d'Arlon
L-1150 Luxembourg
Grand Duchy of Luxembourg
Attn.: The Directors
LU-BavarianSky@intertrustgroup.com
+352 26 56 31 71

Corporate Administrator: **Intertrust (Luxembourg) S.à r.l.**
28 Boulevard F.W. Raiffeisen
L-2411 Luxembourg
Luxembourg
Attn.: BUO - Capital Markets
LU-BavarianSky@intertrustgroup.com
+352 26 44 91

Originator/Servicer: **BMW Bank GmbH**
Lilienthalallee 26
80939 Munich
Germany
Attn.: ABS Servicing Team
abs.bmwgroup@bmw.de

Calculation Agent: **The Bank of New York Mellon**
160 Queen Victoria Street
EC4V 4LA London
United Kingdom
Attn.: BNYM Structured Finance Team 8
BNYM.Structured.Finance.Team.8@bnymellon.com

Bavarian Sky S.A., Compartment German Auto Leases 7
Monthly Investor Report

Reporting Date:	Aug 09, 2024
Payment Date:	Aug 20, 2024
Period No.:	22
Monthly Period:	July, 2024
Interest Period:	July 22, 2024 to Aug 20, 2024 = 29 days

1. Contact Information**Paying Agent:**

The Bank of New York Mellon
160 Queen Victoria Street
EC4V 4LA London
United Kingdom
Attn.: BNYM Structured Finance Team 8
BNYM.Structured.Finance.Team.8@bnymellon.com

Issuer Account Bank:

The Bank of New York Mellon
Friedrich-Ebert-Anlage 49, Messeturm
60327 Frankfurt am Main
Germany
Attn.: BNYM Structured Finance Team 8
BNYM.Structured.Finance.Team.8@bnymellon.com

Trustee:

BNY MELLON CORPORATE TRUSTEE SERVICES LIMITED
160 Queen Victoria Street
EC4V 4AL London
United Kingdom
Attn.: BNYM Structured Finance Team 8
BNYM.Structured.Finance.Team.8@bnymellon.com

Data Trustee:

The Bank of New York Mellon
Friedrich-Ebert-Anlage 49, Messeturm
60327 Frankfurt am Main
Germany
Attn.: BNYM Structured Finance Team 8
BNYM.Structured.Finance.Team.8@bnymellon.com

Bavarian Sky S.A., Compartment German Auto Leases 7
Monthly Investor Report

Reporting Date:	Aug 09, 2024
Payment Date:	Aug 20, 2024
Period No.:	22
Monthly Period:	July, 2024
Interest Period:	July 22, 2024 to Aug 20, 2024 = 29 days

1. Contact Information**Swap Counterparty:****DZ BANK AG**

Deutsche Zentral-Genossenschaftsbank
60265 Frankfurt am Main
Germany
confirmations.otcderivatives@dzbank.de

Rating Agency:**Fitch Ratings Ltd**

30 North Colonnade, Canary Wharf
E14 5GN London
United Kingdom
ABSsurveillance@fitchratings.com

S&P GLOBAL RATINGS EUROPE LIMITED

OpfernTurm
60306 Frankfurt am Main
Germany
ABSEuropeansurveillance@spglobal.com



Bavarian Sky S.A., Compartment German Auto Leases 7
Monthly Investor Report

Reporting Date:	Aug 09, 2024
Payment Date:	Aug 20, 2024
Period No.:	22
Monthly Period:	July, 2024
Interest Period:	July 22, 2024 to Aug 20, 2024 = 29 days

2. Reporting Contact Details

Contact for Investor Reporting:

BMW Bank GmbH
Lilienthalallee 26
80939 Munich
Germany
Attn.: BMW Bank - ABS Servicing Team
abs.bmwgroup@bmw.de
+49-89-382-42480/-53070



Bavarian Sky S.A., Compartment German Auto Leases 7
Monthly Investor Report

Reporting Date:	Aug 09, 2024
Payment Date:	Aug 20, 2024
Period No.:	22
Monthly Period:	July, 2024
Interest Period:	July 22, 2024 to Aug 20, 2024 = 29 days

3. Counterparty History

Replacement Party to be added if applicable

Bavarian Sky S.A., Compartment German Auto Leases 7
Monthly Investor Report

Reporting Date:	Aug 09, 2024
Payment Date:	Aug 20, 2024
Period No.:	22
Monthly Period:	July, 2024
Interest Period:	July 22, 2024 to Aug 20, 2024 = 29 days

4. Overview Dates

Initial Cut-Off Date:	Sept 30, 2022	Revolving Period End Date (including):	Oct 20, 2023
Issue Date:	Oct 20, 2022	Legal Maturity Date:	Oct 21, 2030
Reporting Date:	Aug 09, 2024		
Investor Reporting Date:	Aug 16, 2024		
Interest Determination Date:	July 18, 2024		
Reporting Frequency:	monthly		
Monthly Period No.:	22	(since Issue Date)	
Payment Date:	Aug 20, 2024		
Next Payment Date:	Sept 20, 2024		
Monthly Period:	July 01, 2024	until	July 31, 2024

Bavarian Sky S.A., Compartment German Auto Leases 7
Monthly Investor Report

Reporting Date:	Aug 09, 2024
Payment Date:	Aug 20, 2024
Period No.:	22
Monthly Period:	July, 2024
Interest Period:	July 22, 2024 to Aug 20, 2024 = 29 days

5. Portfolio Information

	current period	prior period
Outstanding receivables (in EUR)	Aggregate Discounted Lease Balance	Aggregate Discounted Lease Balance
Beginning of period	463,366,093.60	501,087,673.08
Scheduled Principal payments	33,806,965.66	35,201,957.38
Repurchases* principal	2,213,863.43	2,111,775.13
Repurchases* number of contracts	2,380	1,920
Total principal collections	36,020,829.09	37,313,732.51
Total interest collections	2,290,178.43	2,478,217.54
Unpaid Interest	10,138.27	11,242.07
Defaulted Amounts	470,390.13	419,089.04
Recoveries	14,142.31	17,204.73
Additional Lease Receivables amount	0.00	0.00
End of Period	426,885,012.65	463,366,093.60
Current repurchase rate (annualised)	5.59%	4.94%

Repurchases include all contracts repurchased due to early terminations or financial changes

Bavarian Sky S.A., Compartment German Auto Leases 7
Monthly Investor Report

Reporting Date:	Aug 09, 2024
Payment Date:	Aug 20, 2024
Period No.:	22
Monthly Period:	July, 2024
Interest Period:	July 22, 2024 to Aug 20, 2024 = 29 days

6. Replenishment Fund / Reserves

Replenishment Fund	in EUR
Outstanding replenishment fund beginning of period	0.00
Interest on replenishment fund - previous period	0.00
Additional Lease Receivables	0.00
Outstanding replenishment fund end of period	0.00

Cash Reserve	in %	in EUR
Outstanding cash reserve beginning of period		7,598,000.00
Interest on cash reserve - previous period		0.00
Required cash reserve		7,598,000.00
Outstanding cash reserve end of period		7,598,000.00

Bavarian Sky S.A., Compartment German Auto Leases 7
Monthly Investor Report

Reporting Date:	Aug 09, 2024
Payment Date:	Aug 20, 2024
Period No.:	22
Monthly Period:	July, 2024
Interest Period:	July 22, 2024 to Aug 20, 2024 = 29 days

6. Replenishment Fund / Reserves (Cont')

Additional Reserves Triggers*									
Reserves	Current ratio	Trigger	Required Rating BMW AG						Trigger Breach
				Fitch	S&P	Moody's	DBRS		
Commingling Reserve	N/A	N/A	Long Term	BBB	BBB	N/A	N/A	no	
			Short Term	F2	N/A	N/A	N/A		
Tax Reserve	N/A	N/A	Long Term	N/A	BBB	N/A	N/A	no	

Additional Reserves	in EUR
Outstanding Commingling Reserve end of period	0.00
Outstanding Tax Reserve end of period	0.00

* Breach of this trigger in conjunction with any other event as set out in the Servicing Agreement and/or the Lease Receivables Purchase Agreement will oblige BMW Bank GmbH to post additional cash collateral. The Reserves will be adjusted on a monthly basis and shall be deposited in the Issuer Account and exclusively reserved to cover risks.

Bavarian Sky S.A., Compartment German Auto Leases 7
Monthly Investor Report

Reporting Date:	Aug 09, 2024
Payment Date:	Aug 20, 2024
Period No.:	22
Monthly Period:	July, 2024
Interest Period:	July 22, 2024 to Aug 20, 2024 = 29 days

7. Performance Data

Aggregate outstanding notes balance

Beginning of period in EUR	451,058,234.02
End of period in EUR	413,860,834.10

Ratios	in EUR	in %
31- 60 days past due		
31- 60 days past due period before previous period	684,110.03	0.14
31- 60 days past due previous period	645,457.74	0.14
31- 60 days past due current period	602,568.40	0.14
61- 90 days past due		
61- 90 days past due period before previous period	485,281.29	0.10
61- 90 days past due previous period	430,669.69	0.09
61- 90 days past due current period	441,178.19	0.10

Performance data		
Number of contracts being 31 - 60 days delinquent	90	
Number of contracts being 61 - 90 days delinquent	66	
Balance in EUR of contracts being 31 - 60 days delinquent	602,568.40	
Balance in EUR of contracts being 61 - 90 days delinquent	441,178.19	
Defaulted amounts in EUR	470,390.13	
Cumulative defaulted amounts in EUR	4,814,242.08	
Recoveries in EUR	14,142.31	
Cumulative recoveries in EUR	108,275.73	

Bavarian Sky S.A., Compartment German Auto Leases 7

Monthly Investor Report

Reporting Date: Aug 09, 2024
 Payment Date: Aug 20, 2024
 Period No.: 22
 Monthly Period: July, 2024
 Interest Period: July 22, 2024 to Aug 20, 2024
 = 29 days

8. Defaulted Amount & Recovery Amount

Collection Period		Number of Defaulted Agreements in Collection Period	Defaulted Amount in Collection Period	Aggregate Defaulted Amount Since Initial Cut-Off Date	Number of Tolerance Write-Offs*	Tolerance Write-Off Amount*	Aggregate Tolerance Write-Off Amount Since Initial Cut-Off Date *	Purchased Amount of New Receivables	Aggregate Amount of Purchased Receivables	Cum. Default Ratio (in % of Aggr. Amount of Purch. Rec.)	Recovery	Recovery Total	Recovery Total (in % of Aggr. Defaulted Amount)
Sept - 22	1	0	n/a	n/a	n/a	n/a	n/a	844,199,946.02	844,199,946.02	n/a	n/a	n/a	n/a
Oct - 22	2	0	0.00	0.00	0	0.00	0.00	38,904,759.93	883,104,705.95	0.00%	0.00	0.00	0.00%
Nov - 22	3	0	0.00	0.00	0	0.00	0.00	40,498,482.59	923,603,188.54	0.00%	0.00	0.00	0.00%
Dec - 22	4	44	37.32	37.32	44	37.32	37.32	41,108,803.28	964,711,991.82	0.00%	0.00	0.00	0.00%
Jan - 23	5	55	4,994.25	5,031.57	33	57.80	95.12	41,238,155.17	1,005,950,146.99	0.00%	0.00	0.00	0.00%
Feb - 23	6	43	59,791.48	64,823.05	21	32.84	127.96	41,349,977.44	1,047,300,124.43	0.01%	0.00	0.00	0.00%
Mar - 23	7	51	97,777.00	162,600.05	32	38.11	166.07	41,971,248.29	1,089,271,372.72	0.01%	0.00	0.00	0.00%
Apr - 23	8	65	59,239.39	221,839.44	21	20.53	186.60	41,449,591.15	1,130,720,963.87	0.02%	1,576.14	1,576.14	0.71%
May - 23	9	43	217,190.13	439,029.57	14	3.66	190.26	42,194,729.15	1,172,915,693.02	0.04%	1,502.57	3,078.71	0.70%
June - 23	10	55	196,483.21	635,512.78	35	26.47	216.73	43,261,566.70	1,216,177,259.72	0.05%	215.19	3,293.90	0.52%
July - 23	11	52	241,426.09	876,938.87	22	0.22	216.95	43,091,358.86	1,259,268,618.58	0.07%	538.70	3,832.60	0.44%
Aug - 23	12	58	389,553.13	1,266,492.00	14	0.14	217.09	43,560,741.07	1,302,829,359.65	0.10%	4,618.84	8,451.44	0.67%
Sept - 23	13	53	238,619.94	1,505,111.94	23	10.20	227.29	44,072,682.55	1,346,902,042.20	0.11%	1,839.04	10,290.48	0.68%
Oct - 23	14	59	264,244.08	1,769,356.02	20	0.20	227.49	0.00	1,346,902,042.20	0.13%	3,154.45	13,444.93	0.76%
Nov - 23	15	65	298,174.10	2,067,530.12	22	9.94	237.43	0.00	1,346,902,042.20	0.15%	11,150.93	24,595.86	1.19%
Dec - 23	16	85	231,684.98	2,299,215.10	58	6.32	243.75	0.00	1,346,902,042.20	0.17%	2,539.80	27,135.66	1.18%
Jan - 24	17	42	210,390.74	2,509,605.84	7	0.07	243.82	0.00	1,346,902,042.20	0.19%	13,353.81	40,489.47	1.61%
Feb - 24	18	87	283,620.47	2,793,226.31	50	202.14	445.96	0.00	1,346,902,042.20	0.21%	8,102.18	48,591.65	1.74%
Mar - 24	19	32	180,766.40	2,973,992.71	10	0.10	446.06	0.00	1,346,902,042.20	0.22%	4,083.17	52,674.82	1.77%
Apr - 24	20	73	490,891.21	3,464,883.92	14	0.14	446.20	0.00	1,346,902,042.20	0.26%	9,233.15	61,907.97	1.79%
May - 24	21	93	459,878.99	3,924,762.91	17	0.17	446.37	0.00	1,346,902,042.20	0.29%	15,020.72	76,928.69	1.96%
June - 24	22	67	419,089.04	4,343,851.95	34	0.34	446.71	0.00	1,346,902,042.20	0.32%	17,204.73	94,133.42	2.17%
July - 24	23	89	470,390.13	4,814,242.08	25	0.25	446.96	0.00	1,346,902,042.20	0.36%	14,142.31	108,275.73	2.25%

* tolerance write-off amount <=10 EUR

Bavarian Sky S.A., Compartment German Auto Leases 7
Monthly Investor Report

Reporting Date: Aug 09, 2024
 Payment Date: Aug 20, 2024
 Period No.: 22
 Monthly Period: July, 2024
 Interest Period: July 22, 2024 to Aug 20, 2024
 = 29 days

8a. Defaulted Amount & Recovery Amount - Lease Level Data*

	Month / Year of Default	Month / Year of Lease Origination	Discounted Lease Balance (Initial)	Discounted Lease Balance at Default **	Recovery (Current Period)	Recovery Total	Discounted Lease Balance End of Period	Net Loss in %	Vehicle Type (New / Used)	Vehicle Class	Customer Type	Out of Deal (Month / Year)
283	May - 24	June - 21	10,813.00	5,262.11	519.52	519.52	4,742.59	43.86%	New	3 Series	Commercial	
284	May - 24	June - 21	35,541.31	9,359.59	0.00	0.00	9,359.59	26.33%	New	X6 Series	Private Individual	
285	May - 24	Aug - 21	6,151.83	836.57	0.00	0.00	836.57	13.60%	New	X1 Series	Commercial	
286	May - 24	Aug - 21	9,217.64	2,578.51	507.22	1,014.44	1,564.07	16.97%	New	X2 Series	Private Individual	
287	May - 24	Aug - 21	14,343.80	5,755.45	0.00	0.00	5,755.45	40.13%	New	5 Series	Commercial	
288	May - 24	Aug - 21	9,991.15	2,681.30	0.00	-156.09	2,837.39	28.40%	New	X1 Series	Private Individual	
289	May - 24	Aug - 21	19,264.64	8,098.82	0.00	0.00	8,098.82	42.04%	New	X5 Series	Commercial	
290	May - 24	Sept - 21	7,846.40	1,545.96	0.00	0.00	1,545.96	19.70%	New	X1 Series	Commercial	
291	May - 24	Sept - 21	5,988.56	1,179.92	0.00	0.00	1,179.92	19.70%	New	1 Series	Commercial	
292	May - 24	Oct - 21	8,085.61	3,212.74	0.00	0.00	3,212.74	39.73%	Used	X1 Series	Commercial	
293	May - 24	Nov - 21	46,738.63	25,195.10	0.00	0.00	25,195.10	53.91%	New	4 Series	Commercial	
294	May - 24	Nov - 21	9,729.06	4,952.85	0.00	0.00	4,952.85	50.91%	New	3 Series	Commercial	
295	May - 24	Nov - 21	18,705.44	4,861.15	0.00	0.00	4,861.15	25.99%	New	X3 Series	Commercial	
296	May - 24	Nov - 21	22,090.41	7,901.19	0.00	0.00	7,901.19	35.77%	New	X7 Series	Private Individual	
297	May - 24	Jan - 22	10,680.38	3,719.02	0.00	0.00	3,719.02	34.82%	New	X1 Series	Commercial	
298	May - 24	Jan - 22	23,395.70	15,903.25	0.00	0.00	15,903.25	67.98%	Used	3 Series	Commercial	
299	May - 24	Jan - 22	14,414.27	8,560.00	0.00	3,006.00	5,554.00	38.53%	Used	X4 Series	Commercial	
300	May - 24	Jan - 22	13,353.21	4,775.48	0.00	0.00	4,775.48	35.76%	New	3 Series	Commercial	
301	May - 24	Jan - 22	27,181.31	14,809.02	0.00	0.00	14,809.02	54.48%	New	iX	Commercial	
302	May - 24	Jan - 22	20,511.80	12,308.89	0.00	0.00	12,308.89	60.01%	New	i8 Series	Commercial	
303	May - 24	Feb - 22	8,080.98	4,880.71	0.00	0.00	4,880.71	60.40%	New	1 Series	Commercial	
304	May - 24	Feb - 22	18,342.64	8,382.19	0.00	0.00	8,382.19	45.70%	New	4 Series	Commercial	
305	May - 24	Feb - 22	6,285.64	5,008.51	0.00	0.00	5,008.51	79.68%	New	1 Series	Commercial	
306	May - 24	Feb - 22	8,259.82	5,077.33	0.00	0.00	5,077.33	61.47%	New	1 Series	Commercial	
307	May - 24	Feb - 22	8,259.82	5,077.33	0.00	0.00	5,077.33	61.47%	New	1 Series	Commercial	
308	May - 24	Mar - 22	6,734.86	3,638.96	550.57	550.57	3,088.39	45.86%	New	MINI Hatch	Commercial	
309	May - 24	Mar - 22	14,433.29	8,568.06	0.00	-381.19	8,949.25	62.00%	New	X1 Series	Private Individual	
310	May - 24	Apr - 22	19,310.32	12,586.28	0.00	0.00	12,586.28	65.18%	New	3 Series	Commercial	
311	May - 24	Apr - 22	6,913.08	4,133.41	0.00	0.00	4,133.41	59.79%	New	MINI Hatch	Commercial	
312	May - 24	May - 22	18,976.47	8,367.08	0.00	0.00	8,367.08	44.09%	New	X3 Series	Commercial	
313	May - 24	May - 22	9,097.94	5,893.11	0.00	0.00	5,893.11	64.77%	New	1 Series	Commercial	
314	May - 24	May - 22	10,963.50	4,982.84	0.00	0.00	4,982.84	45.45%	New	3 Series	Commercial	

Bavarian Sky S.A., Compartment German Auto Leases 7

Monthly Investor Report

Reporting Date: Aug 09, 2024
 Payment Date: Aug 20, 2024
 Period No.: 22
 Monthly Period: July, 2024
 Interest Period: July 22, 2024 to Aug 20, 2024
 = 29 days

8a. Defaulted Amount & Recovery Amount - Lease Level Data*

	Month / Year of Default	Month / Year of Lease Origination	Discounted Lease Balance (Initial)	Discounted Lease Balance at Default **	Recovery (Current Period)	Recovery Total	Discounted Lease Balance End of Period	Net Loss in %	Vehicle Type (New / Used)	Vehicle Class	Customer Type	Out of Deal (Month / Year)
315	May - 24	May - 22	9,161.32	5,962.79	0.00	0.00	5,962.79	65.09%	New	1 Series	Commercial	
316	May - 24	May - 22	9,097.94	5,893.11	0.00	0.00	5,893.11	64.77%	New	1 Series	Commercial	
317	May - 24	May - 22	9,097.94	5,893.11	0.00	0.00	5,893.11	64.77%	New	1 Series	Commercial	
318	May - 24	May - 22	7,682.16	4,457.29	0.00	0.00	4,457.29	58.02%	New	1 Series	Commercial	
319	May - 24	May - 22	13,520.51	7,954.22	0.00	0.00	7,954.22	58.83%	New	3 Series	Commercial	
320	May - 24	May - 22	17,418.52	10,290.61	0.00	0.00	10,290.61	59.08%	New	X3 Series	Commercial	
321	May - 24	June - 22	19,435.84	13,982.78	0.00	0.00	13,982.78	71.94%	New	Z4 Series	Commercial	
322	May - 24	June - 22	17,750.26	12,801.28	0.00	0.00	12,801.28	72.12%	New	X1 Series	Commercial	
323	May - 24	June - 22	10,823.19	7,224.06	0.00	0.00	7,224.06	66.75%	New	Z4 Series	Commercial	
324	May - 24	June - 22	29,781.24	17,881.57	0.00	0.00	17,881.57	60.04%	New	4 Series	Commercial	
325	May - 24	June - 22	11,973.86	8,996.88	0.00	0.00	8,996.88	75.14%	New	2 Series	Commercial	
326	May - 24	July - 22	17,694.79	8,817.64	662.67	1,325.34	7,492.30	42.34%	New	X3 Series	Commercial	
327	May - 24	Aug - 22	9,898.94	6,773.73	0.00	0.00	6,773.73	68.43%	New	1 Series	Commercial	
328	May - 24	Aug - 22	21,707.06	12,597.93	0.00	0.00	12,597.93	58.04%	New	3 Series	Commercial	
329	May - 24	Aug - 22	17,265.51	9,989.70	0.00	0.00	9,989.70	57.86%	New	i3 Series	Commercial	
330	May - 24	Aug - 22	20,168.37	11,704.93	0.00	0.00	11,704.93	58.04%	New	2 Series	Commercial	
331	May - 24	Aug - 22	11,545.04	8,432.57	0.00	0.00	8,432.57	73.04%	New	1 Series	Private Individual	
332	May - 24	Aug - 22	6,691.99	5,587.30	0.00	0.00	5,587.30	83.49%	New	1 Series	Commercial	
333	May - 24	Oct - 22	10,830.55	8,056.17	0.00	0.00	8,056.17	74.38%	New	1 Series	Commercial	
334	May - 24	Oct - 22	10,529.82	7,844.91	0.00	0.00	7,844.91	74.50%	Used	MINI Hatch	Commercial	
335	May - 24	Nov - 22	18,328.72	12,869.52	0.00	0.00	12,869.52	70.22%	New	2 Series	Commercial	
336	May - 24	Nov - 22	19,360.34	13,383.31	0.00	0.00	13,383.31	69.13%	New	X1 Series	Commercial	
337	May - 24	Mar - 23	13,113.30	11,914.71	0.00	0.00	11,914.71	90.86%	New	MINI Clubman	Commercial	
338	May - 24	Mar - 23	10,127.55	8,340.30	0.00	0.00	8,340.30	82.35%	New	1 Series	Private Individual	
339	June - 24	Sept - 20	14,953.63	7,503.61	0.00	0.00	7,503.61	50.18%	New	X5 Series	Commercial	
340	June - 24	Mar - 21	21,397.40	11,627.28	0.00	0.00	11,627.28	54.34%	New	X5 Series	Commercial	
341	June - 24	Dec - 21	18,623.65	8,511.62	0.00	0.00	8,511.62	45.70%	New	5 Series	Commercial	
342	June - 24	Jan - 22	22,913.03	11,808.44	0.00	0.00	11,808.44	51.54%	New	3 Series	Commercial	
343	June - 24	Mar - 22	7,873.10	4,615.44	0.00	0.00	4,615.44	58.62%	New	2 Series	Commercial	
344	June - 24	Mar - 22	9,195.71	5,445.87	0.00	0.00	5,445.87	59.22%	New	X1 Series	Commercial	
345	June - 24	May - 22	15,510.61	8,575.47	0.00	0.00	8,575.47	55.29%	New	X3 Series	Commercial	
346	June - 24	May - 22	7,330.62	4,315.66	0.00	0.00	4,315.66	58.87%	New	1 Series	Commercial	

Bavarian Sky S.A., Compartment German Auto Leases 7

Monthly Investor Report

Reporting Date: Aug 09, 2024
 Payment Date: Aug 20, 2024
 Period No.: 22
 Monthly Period: July, 2024
 Interest Period: July 22, 2024 to Aug 20, 2024
 = 29 days

8a. Defaulted Amount & Recovery Amount - Lease Level Data*

	Month / Year of Default	Month / Year of Lease Origination	Discounted Lease Balance (Initial)	Discounted Lease Balance at Default **	Recovery (Current Period)	Recovery Total	Discounted Lease Balance End of Period	Net Loss in %	Vehicle Type (New / Used)	Vehicle Class	Customer Type	Out of Deal (Month / Year)
347	June - 24	May - 22	32,137.47	22,331.98	0.00	0.00	22,331.98	69.49%	New	X5 Series	Commercial	
348	June - 24	July - 22	11,263.05	6,234.25	0.00	0.00	6,234.25	55.35%	New	2 Series	Commercial	
349	June - 24	Aug - 22	50,872.67	33,598.55	0.00	0.00	33,598.55	66.04%	New	4 Series	Commercial	
350	June - 24	Aug - 22	25,718.24	14,376.32	0.00	0.00	14,376.32	55.90%	New	4 Series	Commercial	
351	June - 24	Aug - 22	23,684.25	15,487.75	0.00	0.00	15,487.75	65.39%	New	5 Series	Commercial	
352	June - 24	Sept - 22	58,787.82	42,087.97	0.00	0.00	42,087.97	71.59%	New	X5 Series	Commercial	
353	June - 24	Oct - 22	23,781.42	18,911.49	0.00	0.00	18,911.49	79.52%	New	X4 Series	Commercial	
354	June - 24	Oct - 22	15,689.39	12,096.83	0.00	0.00	12,096.83	77.10%	Used	3 Series	Private Individual	
355	June - 24	Nov - 22	37,055.89	25,043.41	0.00	0.00	25,043.41	67.58%	New	4 Series	Commercial	
356	June - 24	Nov - 22	18,300.67	10,516.48	0.00	0.00	10,516.48	57.46%	New	3 Series	Commercial	
357	June - 24	Dec - 22	13,956.49	7,929.41	0.00	0.00	7,929.41	56.82%	New	Z4 Series	Commercial	
358	June - 24	Jan - 23	20,958.78	17,171.20	0.00	0.00	17,171.20	81.93%	New	X1 Series	Commercial	
359	June - 24	Feb - 23	29,782.67	20,768.59	0.00	0.00	20,768.59	69.73%	New	X5 Series	Commercial	
360	June - 24	Feb - 23	27,710.30	25,133.51	0.00	0.00	25,133.51	90.70%	New	X6 Series	Commercial	
361	June - 24	May - 23	20,479.20	18,181.14	0.00	0.00	18,181.14	88.78%	New	X1 Series	Commercial	
362	June - 24	May - 23	48,779.55	45,520.18	0.00	0.00	45,520.18	93.32%	Used	X5 Series	Commercial	
363	June - 24	Aug - 23	20,965.84	19,617.95	0.00	0.00	19,617.95	93.57%	New	2 Series	Commercial	
364	July - 24	Sept - 20	6,886.54	2,692.12	0.00	0.00	2,692.12	39.09%	New	X2 Series	Private Individual	
365	July - 24	Apr - 21	19,153.38	6,843.48	0.00	0.00	6,843.48	35.73%	New	3 Series	Private Individual	
366	July - 24	Apr - 21	9,889.82	4,369.42	0.00	0.00	4,369.42	44.18%	New	2 Series	Commercial	
367	July - 24	Aug - 21	12,797.26	6,354.18	0.00	0.00	6,354.18	49.65%	New	2 Series	Commercial	
368	July - 24	Aug - 21	6,551.85	2,287.08	0.00	0.00	2,287.08	34.91%	New	3 Series	Private Individual	
369	July - 24	Aug - 21	5,148.63	911.27	0.00	0.00	911.27	17.70%	New	1 Series	Private Individual	
370	July - 24	Sept - 21	15,253.79	6,416.80	0.00	0.00	6,416.80	42.07%	New	X3 Series	Private Individual	
371	July - 24	Sept - 21	5,688.57	786.02	0.00	0.00	786.02	13.82%	New	MINI Hatch	Private Individual	
372	July - 24	Sept - 21	9,969.55	4,292.31	0.00	0.00	4,292.31	43.05%	New	3 Series	Commercial	
373	July - 24	Oct - 21	7,858.46	6,147.45	0.00	0.00	6,147.45	78.23%	New	3 Series	Private Individual	
374	July - 24	Oct - 21	16,273.97	8,635.96	0.00	0.00	8,635.96	53.07%	New	X3 Series	Private Individual	
375	July - 24	Nov - 21	5,279.79	2,052.81	0.00	0.00	2,052.81	38.88%	New	1 Series	Private Individual	
376	July - 24	Nov - 21	14,227.39	4,351.62	0.00	0.00	4,351.62	30.59%	New	X3 Series	Commercial	
377	July - 24	Nov - 21	11,680.06	6,824.57	0.00	0.00	6,824.57	58.43%	New	X3 Series	Commercial	
378	July - 24	Dec - 21	8,657.93	2,707.77	0.00	0.00	2,707.77	31.28%	New	3 Series	Commercial	

Bavarian Sky S.A., Compartment German Auto Leases 7
Monthly Investor Report

Reporting Date: Aug 09, 2024
 Payment Date: Aug 20, 2024
 Period No.: 22
 Monthly Period: July, 2024
 Interest Period: July 22, 2024 to Aug 20, 2024
 = 29 days

8a. Defaulted Amount & Recovery Amount - Lease Level Data*

	Month / Year of Default	Month / Year of Lease Origination	Discounted Lease Balance (Initial)	Discounted Lease Balance at Default **	Recovery (Current Period)	Recovery Total	Discounted Lease Balance End of Period	Net Loss in %	Vehicle Type (New / Used)	Vehicle Class	Customer Type	Out of Deal (Month / Year)
379	July - 24	Jan - 22	8,964.63	3,664.08	0.00	0.00	3,664.08	40.87%	New	1 Series	Commercial	
380	July - 24	Jan - 22	17,726.03	6,019.44	0.00	0.00	6,019.44	33.96%	New	4 Series	Commercial	
381	July - 24	Mar - 22	20,496.59	13,180.38	0.00	0.00	13,180.38	64.31%	New	X4 Series	Commercial	
382	July - 24	Mar - 22	21,893.77	7,601.15	0.00	0.00	7,601.15	34.72%	New	X7 Series	Commercial	
383	July - 24	Mar - 22	21,085.00	8,681.05	0.00	0.00	8,681.05	41.17%	New	X7 Series	Commercial	
384	July - 24	Mar - 22	13,330.36	8,663.11	0.00	0.00	8,663.11	64.99%	New	5 Series	Commercial	
385	July - 24	Apr - 22	24,986.85	11,470.49	0.00	0.00	11,470.49	45.91%	New	7 Series	Commercial	
386	July - 24	Apr - 22	11,020.47	9,493.84	0.00	0.00	9,493.84	86.15%	New	X3 Series	Commercial	
387	July - 24	May - 22	3,277.56	1,283.06	0.00	0.00	1,283.06	39.15%	New	X4 Series	Private Individual	
388	July - 24	June - 22	19,958.66	11,058.44	0.00	0.00	11,058.44	55.41%	New	8 Series	Commercial	
389	July - 24	July - 22	18,824.98	10,899.99	0.00	0.00	10,899.99	57.90%	New	3 Series	Commercial	
390	July - 24	July - 22	25,907.49	11,711.23	0.00	0.00	11,711.23	45.20%	New	X5 Series	Commercial	
391	July - 24	July - 22	24,387.74	11,903.28	0.00	0.00	11,903.28	48.81%	New	X3 Series	Commercial	
392	July - 24	July - 22	14,181.83	6,323.72	0.00	0.00	6,323.72	44.59%	New	X3 Series	Commercial	
393	July - 24	July - 22	20,697.91	11,344.96	0.00	0.00	11,344.96	54.81%	New	3 Series	Commercial	
394	July - 24	Aug - 22	28,044.80	13,077.03	0.00	0.00	13,077.03	46.63%	New	X3 Series	Commercial	
395	July - 24	Sept - 22	58,266.47	38,257.78	0.00	0.00	38,257.78	65.66%	New	X5 Series	Commercial	
396	July - 24	Sept - 22	26,367.60	20,582.53	0.00	0.00	20,582.53	78.06%	New	X5 Series	Commercial	
397	July - 24	Oct - 22	2,243.91	1,132.90	0.00	0.00	1,132.90	50.49%	New	MINI Hatch	Commercial	
398	July - 24	Oct - 22	1,632.71	1,132.90	0.00	0.00	1,132.90	69.39%	New	MINI Hatch	Commercial	
399	July - 24	Oct - 22	2,143.12	1,132.80	0.00	0.00	1,132.80	52.86%	New	MINI Hatch	Commercial	
400	July - 24	Nov - 22	12,678.59	8,411.97	0.00	0.00	8,411.97	66.35%	New	MINI Clubman	Commercial	
401	July - 24	Nov - 22	12,287.49	9,934.40	0.00	0.00	9,934.40	80.85%	New	1 Series	Private Individual	
402	July - 24	Nov - 22	30,699.14	27,228.50	0.00	0.00	27,228.50	88.69%	New	5 Series	Commercial	
403	July - 24	Dec - 22	9,833.15	9,400.04	0.00	0.00	9,400.04	95.60%	New	MINI Hatch	Commercial	
404	July - 24	Jan - 23	40,450.60	29,553.26	0.00	0.00	29,553.26	73.06%	New	8 Series	Commercial	
405	July - 24	Jan - 23	25,101.24	20,014.68	0.00	0.00	20,014.68	79.74%	New	X1 Series	Commercial	
406	July - 24	Jan - 23	17,189.55	15,294.66	0.00	0.00	15,294.66	88.98%	New	3 Series	Commercial	
407	July - 24	Feb - 23	35,874.97	30,248.19	0.00	0.00	30,248.19	84.32%	New	X3 Series	Commercial	
408	July - 24	May - 23	35,421.92	28,608.16	0.00	0.00	28,608.16	80.76%	New	X6 Series	Commercial	

*Applicable only if leases have defaulted. Does not include defaulted amounts less than 10 EUR.



Bavarian Sky S.A., Compartment German Auto Leases 7
Monthly Investor Report

Reporting Date:	Aug 09, 2024
Payment Date:	Aug 20, 2024
Period No.:	22
Monthly Period:	July, 2024
Interest Period:	July 22, 2024 to Aug 20, 2024 = 29 days

**This amount mostly includes proceeds from vehicle sale.

Bavarian Sky S.A., Compartment German Auto Leases 7
Monthly Investor Report

Reporting Date: Aug 09, 2024
 Payment Date: Aug 20, 2024
 Period No.: 22
 Monthly Period: July, 2024
 Interest Period: July 22, 2024 to Aug 20, 2024
 = 29 days

8b. Defaulted Amount & Recovery Amount - Lease Level Data* (Out of Deal)

	Month / Year of Default	Month / Year of Lease Origination	Discounted Lease Balance (Initial)	Discounted Lease Balance at Default **	Recovery (Current Period)	Recovery Total	Discounted Lease Balance End of Period	Net Loss in %	Vehicle Type (New / Used)	Vehicle Class	Customer Type	Out of Deal (Month / Year)
277	July - 24	June - 21	12,139.81	2,087.59	0.00	0.00	2,087.59	17.20%	New	7 Series	Commercial	July - 24
279	July - 24	June - 21	4,013.55	208.09	0.00	0.00	208.09	5.18%	New	1 Series	Private Individual	July - 24
280	July - 24	June - 21	7,532.32	281.03	0.00	0.00	281.03	3.73%	New	X2 Series	Commercial	July - 24
284	July - 24	June - 21	8,452.08	1,786.24	0.00	0.00	1,786.24	21.13%	New	4 Series	Commercial	July - 24
285	July - 24	June - 21	9,199.24	221.20	0.00	0.00	221.20	2.40%	New	4 Series	Private Individual	July - 24

* Applicable only if leases have defaulted. Does not include defaulted amounts less than 10 EUR.

** This amount mostly includes proceeds from vehicle sale.

*** Only contracts of the current reporting period and the previous period are displayed.

Bavarian Sky S.A., Compartment German Auto Leases 7

Monthly Investor Report

Reporting Date:	Aug 09, 2024
Payment Date:	Aug 20, 2024
Period No.:	22
Monthly Period:	July, 2024
Interest Period:	July 22, 2024 to Aug 20, 2024 = 29 days

9. Outstanding Notes Balance

1. Note Balance	All Notes	Class A	Class B
Initial Note Information			
ISIN code		XS2537249786	XS2537250792
Currency		EUR	EUR
Legal final maturity		Oct 2030	Oct 2030
Rating (Fitch Moody's S&P DBRS)		AAA N/A AAA N/A	N/A N/A N/A N/A
Initial notes aggregate principal outstanding balance	844,200,000.00	780,000,000.00	64,200,000.00
Nominal amount per note (in EUR)		100,000.00	100,000.00
Initial number of notes per class (in EUR)		7,800	642
Current Note Information			
Notes aggregate principal outstanding balance - BoP (in EUR)	451,058,234.02	386,858,234.02	64,200,000.00
Available distribution amount (in EUR)	46,292,559.02		
Additional purchase price	0.00		
Redemption per class (in EUR)		37,197,399.92	0.00
Redemption per note (in EUR)		4,768.90	0.00
Notes aggregate principal outstanding balance - EoP (in EUR)	413,860,834.10	349,660,834.10	64,200,000.00
Current pool factor		0.45	1.00

2. Payments to Investor per Note	Class A	Class B
Interest Type	Floating Rate	Fixed Rate
Reference Rate	1M_EURIBOR	NONE
Actual Interest Rate	3.633%	NONE
Spread	0.500%	0.00%
Coupon	4.133%	3.50%
Day count fraction	Actual/360	Actual/360
Interest days	29 days	29 days
Principal outstanding per note in EUR - BoP	49,597.21	100,000.00
Principal repayment per note in EUR	4,768.90	0.00
Principal outstanding per note in EUR - EoP	44,828.31	100,000.00
Interest payment per Note in EUR	165.13	281.94

3. Credit Enhancement	Initial Period	Initial CE	Current Period	Current CE
Class A	780,000,000.00	8.50%	349,660,834.10	19.87%
Class B	64,200,000.00	0.90%	64,200,000.00	4.83%
Cash Reserve (+ Overcollateralisation)	7,598,000.00	-	20,622,178.55	-

BMW Bank GmbH complies with the retention requirement of a material net economic interest in accordance with article 6 of the Securitisation Regulation. A minimum of 5.0% of the net economic interest will be retained on an ongoing basis in form of retention of the Class B Notes and Subordinated Loan.



Bavarian Sky S.A., Compartment German Auto Leases 7
Monthly Investor Report

Reporting Date:	Aug 09, 2024
Payment Date:	Aug 20, 2024
Period No.:	22
Monthly Period:	July, 2024
Interest Period:	July 22, 2024 to Aug 20, 2024 = 29 days

9. Outstanding Notes Balance (Cont')

Clean-up Call Option	
If the current aggregate discounted outstanding lease balance is less than 10.00% of the initial aggregate discounted outstanding lease balance on the issue date or if all outstanding Class A notes are repaid in full, the seller will have the option under the lease receivables purchase agreement to demand from the issuer the resale of all outstanding purchased lease receivables.	
Current aggregate discounted outstanding lease balance at end of period	426,885,012.65
Clean-up option exercisable	No

Bavarian Sky S.A., Compartment German Auto Leases 7
Monthly Investor Report

Reporting Date:	Aug 09, 2024
Payment Date:	Aug 20, 2024
Period No.:	22
Monthly Period:	July, 2024
Interest Period:	July 22, 2024 to Aug 20, 2024 = 29 days

10. Initial Aggregate Lease Balance

Initial Portfolio

Group in EUR	Initial Aggregate Lease Balance in EUR	Initial Aggregate Lease Balance in %	Number of Contracts	Number of Contracts in %
0,00 - 5.000,00	32,967,542.37	2.15%	9,588	9.35%
5.000,01 - 10.000,00	228,436,321.86	14.92%	29,626	28.88%
10.000,01 - 15.000,00	301,822,579.42	19.72%	24,612	23.99%
15.000,01 - 20.000,00	258,718,779.33	16.90%	14,965	14.59%
20.000,01 - 25.000,00	206,479,359.97	13.49%	9,256	9.02%
25.000,01 - 30.000,00	159,218,187.05	10.40%	5,830	5.68%
30.000,01 - 35.000,00	112,097,138.34	7.32%	3,479	3.39%
35.000,01 - 40.000,00	83,099,729.43	5.43%	2,231	2.17%
40.000,01 - 45.000,00	53,811,580.80	3.52%	1,273	1.24%
45.000,01 - 50.000,00	35,392,002.56	2.31%	750	0.73%
50.000,01 - 55.000,00	20,473,446.00	1.34%	392	0.38%
55.000,01 - 60.000,00	13,686,984.59	0.89%	239	0.23%
> 60.000,00	24,633,477.56	1.61%	353	0.34%
Total	1,530,837,129.28	100.00%	102,594	100.00%

WA: 14,921.31
MIN : 203.10
MAX: 114,724.80

Bavarian Sky S.A., Compartment German Auto Leases 7
Monthly Investor Report

Reporting Date: Aug 09, 2024
 Payment Date: Aug 20, 2024
 Period No.: 22
 Monthly Period: July, 2024
 Interest Period: July 22, 2024 to Aug 20, 2024
 = 29 days

10. Initial Aggregate Lease Balance (Cont')

Current Portfolio:

Group in EUR	Initial Aggregate Lease Balance in EUR	Initial Aggregate Lease Balance in %	Number of Contracts	Number of Contracts in %
< 0,00	0.00	0.00%	0	0.00%
0,00 - 5.000,00	16,159,471.21	1.11%	4,543	5.28%
5.000,01 - 10.000,00	163,240,759.65	11.25%	20,772	24.16%
10.000,01 - 15.000,00	263,145,551.66	18.13%	21,384	24.87%
15.000,01 - 20.000,00	237,710,017.43	16.38%	13,736	15.98%
20.000,01 - 25.000,00	208,360,117.26	14.36%	9,318	10.84%
25.000,01 - 30.000,00	176,008,296.20	12.13%	6,445	7.50%
30.000,01 - 35.000,00	125,105,550.03	8.62%	3,881	4.51%
35.000,01 - 40.000,00	93,228,709.87	6.42%	2,502	2.91%
40.000,01 - 45.000,00	58,289,047.00	4.02%	1,378	1.60%
45.000,01 - 50.000,00	40,424,721.74	2.79%	857	1.00%
50.000,01 - 55.000,00	23,057,971.38	1.59%	441	0.51%
55.000,01 - 60.000,00	16,475,214.33	1.14%	288	0.34%
> 60.000,00	29,971,586.82	2.07%	423	0.49%
Total	1,451,177,014.58	100.00%	85,968	100.00%

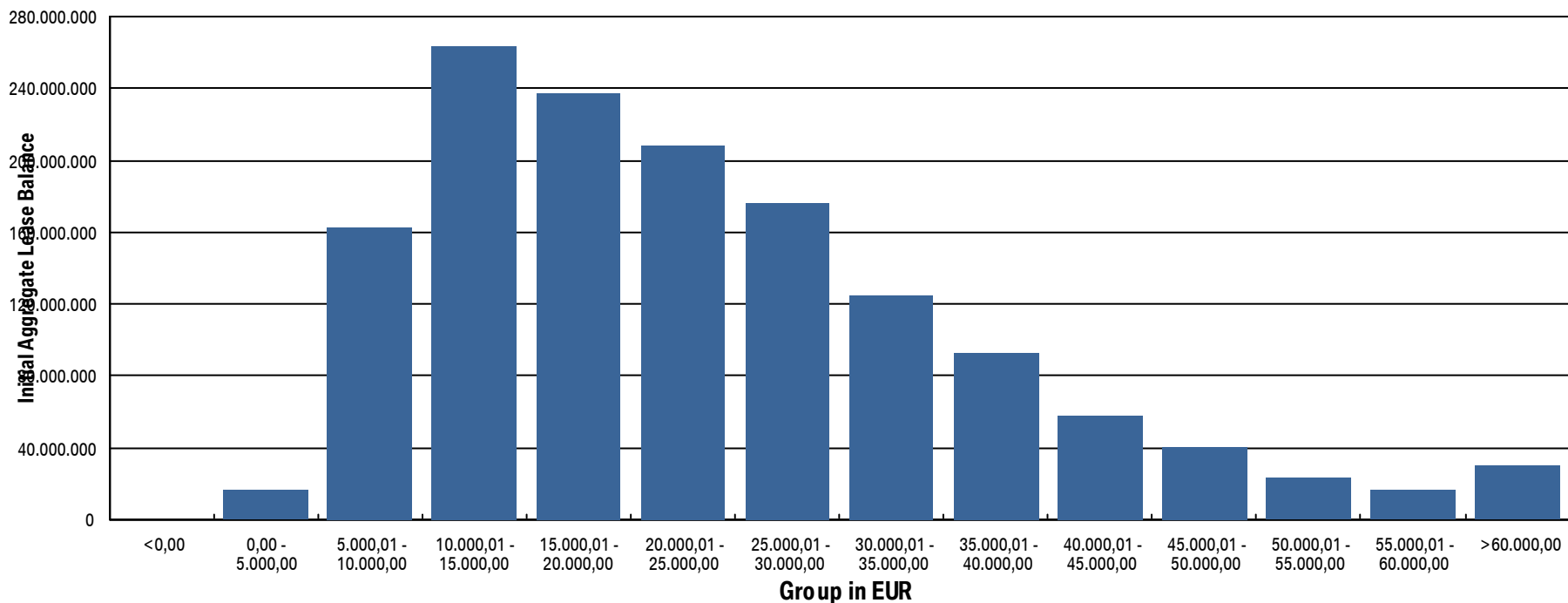
WA: 16,880.43
 MIN: 594.96
 MAX: 118,848.48

Bavarian Sky S.A., Compartment German Auto Leases 7
Monthly Investor Report

Reporting Date: Aug 09, 2024
 Payment Date: Aug 20, 2024
 Period No.: 22
 Monthly Period: July, 2024
 Interest Period: July 22, 2024 to Aug 20, 2024
 = 29 days

10.a Initial Aggregate Lease Balance (Graph)

Current Portfolio:



Bavarian Sky S.A., Compartment German Auto Leases 7
Monthly Investor Report

Reporting Date: Aug 09, 2024
 Payment Date: Aug 20, 2024
 Period No.: 22
 Monthly Period: July, 2024
 Interest Period: July 22, 2024 to Aug 20, 2024
 = 29 days

11. Aggregate Discounted Lease Balance

Initial Portfolio

Group in EUR	Current Aggregate Discounted Lease Balance in EUR	Current Aggregate Discounted Lease Balance in %	Number of Contracts	Number of Contracts in %
0,00 - 5.000,00	108,283,159.49	12.83%	42,874	41.79%
5.000,01 - 10.000,00	216,986,392.10	25.70%	30,097	29.34%
10.000,01 - 15.000,00	176,598,241.67	20.92%	14,446	14.08%
15.000,01 - 20.000,00	125,061,945.56	14.81%	7,242	7.06%
20.000,01 - 25.000,00	86,101,374.31	10.20%	3,872	3.77%
25.000,01 - 30.000,00	54,259,768.34	6.43%	1,991	1.94%
30.000,01 - 35.000,00	34,063,798.58	4.04%	1,057	1.03%
35.000,01 - 40.000,00	19,139,401.15	2.27%	515	0.50%
40.000,01 - 45.000,00	10,032,716.93	1.19%	238	0.23%
45.000,01 - 50.000,00	6,091,283.84	0.72%	129	0.13%
50.000,01 - 55.000,00	3,651,611.24	0.43%	70	0.07%
55.000,01 - 60.000,00	2,075,119.63	0.25%	36	0.04%
> 60.000,00	1,855,133.18	0.22%	27	0.03%
Total	844,199,946.02	100.00%	102,594	100.00%

WA: 8,228.55
 MIN : 14.55
 MAX: 84,639.53

Bavarian Sky S.A., Compartment German Auto Leases 7
Monthly Investor Report

Reporting Date:	Aug 09, 2024
Payment Date:	Aug 20, 2024
Period No.:	22
Monthly Period:	July, 2024
Interest Period:	July 22, 2024 to Aug 20, 2024 = 29 days

11. Aggregate Discounted Lease Balance (Cont')

Current Portfolio:

Group in EUR	Current Aggregate Discounted Lease Balance in EUR	Current Aggregate Discounted Lease Balance in %	Number of Contracts	Number of Contracts in %
0,00 - 5.000,00	108,101,290.13	25.32%	54,286	63.15%
5.000,01 - 10.000,00	142,402,194.14	33.36%	20,111	23.39%
10.000,01 - 15.000,00	87,167,831.49	20.42%	7,204	8.38%
15.000,01 - 20.000,00	45,910,714.27	10.75%	2,686	3.12%
20.000,01 - 25.000,00	22,559,402.08	5.28%	1,022	1.19%
25.000,01 - 30.000,00	9,985,715.33	2.34%	367	0.43%
30.000,01 - 35.000,00	4,935,727.23	1.16%	153	0.18%
35.000,01 - 40.000,00	2,747,524.67	0.64%	74	0.09%
40.000,01 - 45.000,00	1,222,691.16	0.29%	29	0.03%
45.000,01 - 50.000,00	1,044,921.97	0.24%	22	0.03%
50.000,01 - 55.000,00	364,192.63	0.09%	7	0.01%
55.000,01 - 60.000,00	171,203.98	0.04%	3	0.00%
> 60.000,00	271,603.57	0.06%	4	0.00%
Total	426,885,012.65	100.00%	85,968	100.00%

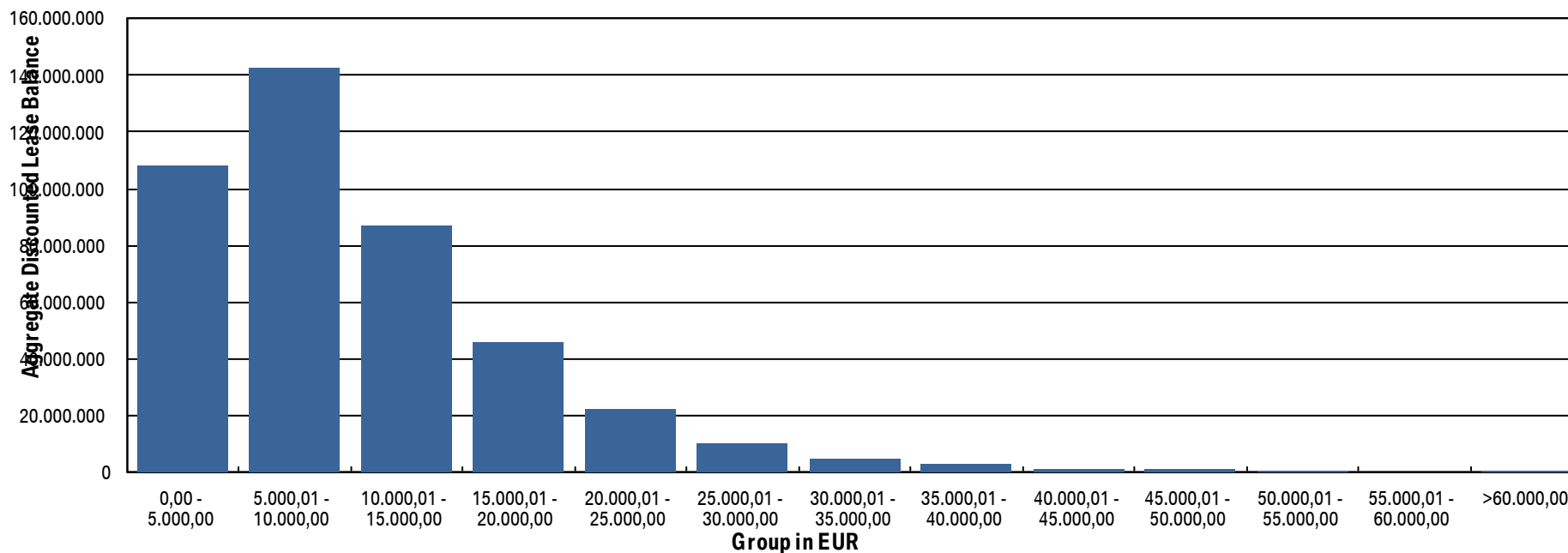
WA: 4,965.63
MIN: 0.00
MAX: 71,575.25

Bavarian Sky S.A., Compartment German Auto Leases 7
Monthly Investor Report

Reporting Date: Aug 09, 2024
 Payment Date: Aug 20, 2024
 Period No.: 22
 Monthly Period: July, 2024
 Interest Period: July 22, 2024 to Aug 20, 2024
 = 29 days

11.a Aggregate Discounted Lease Balance (Graph)

Current Portfolio:



Bavarian Sky S.A., Compartment German Auto Leases 7
Monthly Investor Report

Reporting Date: Aug 09, 2024
 Payment Date: Aug 20, 2024
 Period No.: 22
 Monthly Period: July, 2024
 Interest Period: July 22, 2024 to Aug 20, 2024
 = 29 days

12. Lessee Concentration

Current Portfolio:

Lessee	Current Aggregate Discounted Lease Balance in EUR	Current Aggregate Discounted Lease Balance in %	Number of Contracts	Number of Contracts in %
1	204,497.75	0.05%	27	0.03%
2	179,155.96	0.04%	16	0.02%
3	136,530.90	0.03%	24	0.03%
4	136,453.48	0.03%	55	0.06%
5	118,704.41	0.03%	12	0.01%
6	116,797.40	0.03%	13	0.02%
7	110,940.45	0.03%	14	0.02%
8	110,413.09	0.03%	7	0.01%
9	99,873.89	0.02%	24	0.03%
10	99,087.46	0.02%	13	0.02%
11	96,539.74	0.02%	4	0.00%
12	96,470.76	0.02%	22	0.03%
13	95,067.24	0.02%	18	0.02%
14	94,625.66	0.02%	23	0.03%
15	94,299.50	0.02%	2	0.00%
16	93,350.90	0.02%	10	0.01%
17	93,037.68	0.02%	10	0.01%
18	90,921.30	0.02%	20	0.02%
19	88,562.67	0.02%	4	0.00%
20	87,378.98	0.02%	3	0.00%
Total	2,242,709.22	0.53%	321	0.37%
Total Portfolio Balance:	426,885,012.65			

Bavarian Sky S.A., Compartment German Auto Leases 7
Monthly Investor Report

Reporting Date: Aug 09, 2024
 Payment Date: Aug 20, 2024
 Period No.: 22
 Monthly Period: July, 2024
 Interest Period: July 22, 2024 to Aug 20, 2024
 = 29 days

13. Geographical Distribution

Initial Portfolio

Group in Region	Current Aggregate Discounted Lease Balance in EUR	Current Aggregate Discounted Lease Balance in %	Number of Contracts	Number of Contracts in %
Post Code Area 0	39,724,533.83	4.71%	4,538	4.42%
Post Code Area 1	44,627,113.54	5.29%	5,037	4.91%
Post Code Area 2	76,859,647.17	9.10%	8,934	8.71%
Post Code Area 3	81,416,910.10	9.64%	10,174	9.92%
Post Code Area 4	101,819,975.58	12.06%	12,224	11.91%
Post Code Area 5	92,810,527.29	10.99%	11,112	10.83%
Post Code Area 6	103,494,197.82	12.26%	13,350	13.01%
Post Code Area 7	103,197,603.33	12.22%	13,149	12.82%
Post Code Area 8	124,808,070.33	14.78%	14,792	14.42%
Post Code Area 9	75,441,367.03	8.94%	9,284	9.05%
Total	844,199,946.02	100.00%	102,594	100.00%

Bavarian Sky S.A., Compartment German Auto Leases 7
Monthly Investor Report

Reporting Date: Aug 09, 2024
 Payment Date: Aug 20, 2024
 Period No.: 22
 Monthly Period: July, 2024
 Interest Period: July 22, 2024 to Aug 20, 2024
 = 29 days

13. Geographical Distribution (Cont!)

Current Portfolio:

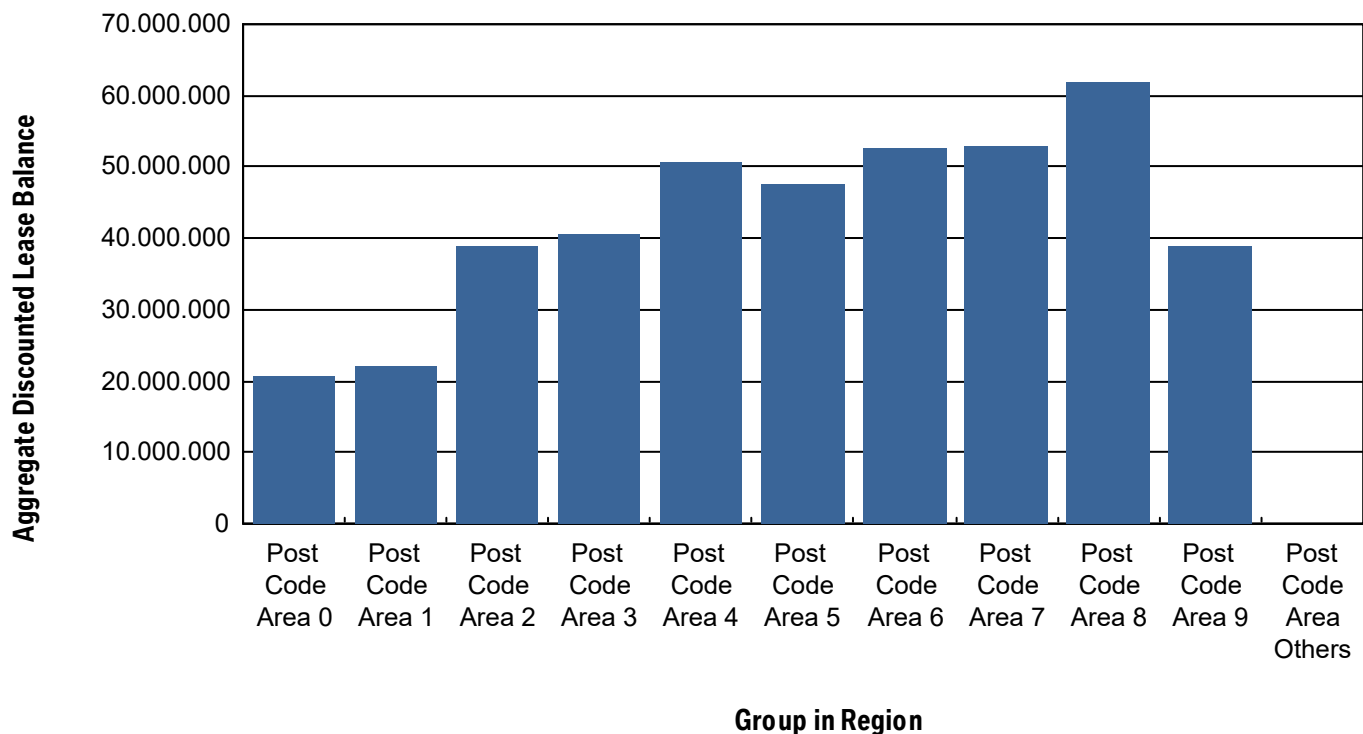
Group in Region	Current Aggregate Discounted Lease Balance in EUR	Current Aggregate Discounted Lease Balance in %	Number of Contracts	Number of Contracts in %
Post Code Area 0	20,792,249.76	4.87%	3,826	4.45%
Post Code Area 1	22,231,230.29	5.21%	4,206	4.89%
Post Code Area 2	38,798,029.07	9.09%	7,477	8.70%
Post Code Area 3	40,506,990.07	9.49%	8,435	9.81%
Post Code Area 4	50,657,136.77	11.87%	10,192	11.86%
Post Code Area 5	47,476,893.77	11.12%	9,557	11.12%
Post Code Area 6	52,651,033.80	12.33%	10,998	12.79%
Post Code Area 7	52,922,826.22	12.40%	10,901	12.68%
Post Code Area 8	61,897,688.67	14.50%	12,440	14.47%
Post Code Area 9	38,865,404.31	9.10%	7,919	9.21%
Post Code Area Others	85,529.92	0.02%	17	0.02%
Total	426,885,012.65	100.00%	85,968	100.00%

Bavarian Sky S.A., Compartment German Auto Leases 7
Monthly Investor Report

Reporting Date: Aug 09, 2024
 Payment Date: Aug 20, 2024
 Period No.: 22
 Monthly Period: July, 2024
 Interest Period: July 22, 2024 to Aug 20, 2024
 = 29 days

13.a Geographical Distribution (Graph)

Current Portfolio:



Bavarian Sky S.A., Compartment German Auto Leases 7
Monthly Investor Report

Reporting Date:	Aug 09, 2024
Payment Date:	Aug 20, 2024
Period No.:	22
Monthly Period:	July, 2024
Interest Period:	July 22, 2024 to Aug 20, 2024 = 29 days

14. Object Type

Initial Portfolio

Vehicle Type *	Current Aggregate Discounted Lease Balance in EUR	Current Aggregate Discounted Lease Balance in %	Number of Contracts	Number of Contracts in %
New	830,418,833.34	98.37%	101,275	98.71%
Used	13,781,112.68	1.63%	1,319	1.29%
Total	844,199,946.02	100.00%	102,594	100.00%

*New Car: include, for the avoidance of doubt, demonstration cars.

Customer Type **	Current Aggregate Discounted Lease Balance in EUR	Current Aggregate Discounted Lease Balance in %	Number of Contracts	Number of Contracts in %
Commercial	473,071,886.27	56.04%	44,251	43.13%
Private Individual	371,128,059.75	43.96%	58,343	56.87%
Total	844,199,946.02	100.00%	102,594	100.00%

** Private: include, for the avoidance of doubt, self-employed individuals.

Bavarian Sky S.A., Compartment German Auto Leases 7
Monthly Investor Report

Reporting Date:	Aug 09, 2024
Payment Date:	Aug 20, 2024
Period No.:	22
Monthly Period:	July, 2024
Interest Period:	July 22, 2024 to Aug 20, 2024 = 29 days

14. Object Type (Cont')

Current Portfolio

Vehicle Type *	Current Aggregate Discounted Lease Balance in EUR	Current Aggregate Discounted Lease Balance in %	Number of Contracts	Number of Contracts in %
New	418,107,133.63	97.94%	84,363	98.13%
Used	8,777,879.02	2.06%	1,605	1.87%
Total	426,885,012.65	100.00%	85,968	100.00%

*New Car: include, for the avoidance of doubt, demonstration cars.

Customer Type **	Current Aggregate Discounted Lease Balance in EUR	Current Aggregate Discounted Lease Balance in %	Number of Contracts	Number of Contracts in %
Commercial	247,193,977.41	57.91%	38,958	45.32%
Private Individual	179,691,035.24	42.09%	47,010	54.68%
Total	426,885,012.65	100.00%	85,968	100.00%

** Private: include, for the avoidance of doubt, self-employed individuals.

Bavarian Sky S.A., Compartment German Auto Leases 7
Monthly Investor Report

Reporting Date:	Aug 09, 2024
Payment Date:	Aug 20, 2024
Period No.:	22
Monthly Period:	July, 2024
Interest Period:	July 22, 2024 to Aug 20, 2024 = 29 days

15. Fuel Type

Current Portfolio

Fuel Type	Current Aggregate Discounted Lease Balance in EUR	Current Aggregate Discounted Lease Balance in %	Number of Contracts	Number of Contracts in %
B	176,358,612.68	41.31%	39,352	45.78%
D	97,577,019.16	22.86%	15,799	18.38%
E	60,042,314.67	14.07%	14,709	17.11%
U	16,871.72	0.00%	1	0.00%
X	74,058,541.05	17.35%	12,905	15.01%
Y	18,831,653.37	4.41%	3,202	3.72%
Total	426,885,012.65	100.00%	85,968	100.00%

B = Petrol; D = Diesel; E = Electric; G = LPG, H = Hydrogen; M = Methane; T = Ethanol; X = Hybrid-Petrol; Y = Hybrid-Diesel; Z= Hydrogen-Electric; U = Undefined.

Bavarian Sky S.A., Compartment German Auto Leases 7
Monthly Investor Report

Reporting Date:	Aug 09, 2024
Payment Date:	Aug 20, 2024
Period No.:	22
Monthly Period:	July, 2024
Interest Period:	July 22, 2024 to Aug 20, 2024 = 29 days

16. Delinquencies

Initial Portfolio

Days Past Due	Current Aggregate Discounted Lease Balance in EUR	Current Aggregate Discounted Lease Balance in %	Number of Contracts	Number of Contracts in %
1 - 30	0.00	0.00%	0	0.00%
31 - 60	0.00	0.00%	0	0.00%
61 - 90	0.00	0.00%	0	0.00%
91 - 120	0.00	0.00%	0	0.00%
> 120	0.00	0.00%	0	0.00%
Total	0.00	0.00%	0	0.00%

Current Portfolio

Days Past Due	Current Aggregate Discounted Lease Balance in EUR	Current Aggregate Discounted Lease Balance in %	Number of Contracts	Number of Contracts in %
1 - 30	1,337,866.22	0.31%	187	0.22%
31 - 60	602,568.40	0.14%	90	0.10%
61 - 90	441,178.19	0.10%	66	0.08%
91 - 120	256,877.19	0.06%	39	0.05%
> 120	901,488.61	0.21%	88	0.10%
Total	3,539,978.61	0.83%	470	0.55%

Bavarian Sky S.A., Compartment German Auto Leases 7

Monthly Investor Report

Reporting Date:	Aug 09, 2024
Payment Date:	Aug 20, 2024
Period No.:	22
Monthly Period:	July, 2024
Interest Period:	July 22, 2024 to Aug 20, 2024 = 29 days

16.a Delinquency Analysis

Monthly Period	Performing in EUR	Delinquencies			
		31-60 Days Past Due in EUR	61-90 Days Past Due in EUR	91-120 Days Past Due in EUR	>120 Days Past Due in EUR
Oct - 22	844,199,974.46	0.00	0.00	0.00	0.00
Nov - 22	843,664,170.24	535,800.01	0.00	0.00	0.00
Dec - 22	843,447,059.55	401,182.88	351,732.57	0.00	0.00
Jan - 23	843,257,057.61	470,547.17	207,410.03	264,949.50	0.00
Feb - 23	842,953,760.57	586,811.30	293,538.02	165,400.25	200,404.56
Mar - 23	842,982,421.17	497,581.93	306,849.35	178,402.84	234,623.11
Apr - 23	842,684,076.96	683,219.56	307,709.81	188,754.00	336,238.88
May - 23	842,510,608.32	578,516.70	478,325.53	296,313.16	336,066.88
June - 23	842,498,650.05	472,276.63	407,622.62	389,627.02	431,803.19
July - 23	842,630,574.92	385,498.39	318,199.32	317,983.14	547,654.96
Aug - 23	842,576,681.06	652,595.75	272,865.68	272,516.71	425,266.93
Sept - 23	842,415,089.23	804,639.02	305,919.23	242,926.92	431,378.02
Oct - 23	799,012,429.23	685,381.96	461,810.61	214,381.97	381,480.92
Nov - 23	755,414,566.95	780,810.31	505,163.08	389,695.82	367,119.34
Dec - 23	712,496,750.93	904,369.38	581,426.74	456,333.38	497,340.88
Jan - 24	661,441,746.25	619,029.21	573,173.82	479,427.72	703,389.40
Feb - 24	619,435,151.83	808,270.70	470,993.01	426,951.20	919,727.39
Mar - 24	577,868,185.23	970,510.23	487,278.14	403,440.60	1,069,387.85
Apr - 24	537,642,767.23	748,736.25	706,822.49	371,905.38	935,492.67
May - 24	498,520,599.06	684,110.03	485,281.29	547,310.70	850,372.00
June - 24	460,943,199.77	645,457.74	430,669.69	414,733.53	932,032.87
July - 24	424,682,900.26	602,568.40	441,178.19	256,877.19	901,488.61

Bavarian Sky S.A., Compartment German Auto Leases 7
Monthly Investor Report

Reporting Date:	Aug 09, 2024
Payment Date:	Aug 20, 2024
Period No.:	22
Monthly Period:	July, 2024
Interest Period:	July 22, 2024 to Aug 20, 2024 = 29 days

17. Seasoning

Initial Portfolio

Group in Months	Current Aggregate Discounted Lease Balance in EUR	Current Aggregate Discounted Lease Balance in %	Number of Contracts	Number of Contracts in %
<= 6	356,639,631.59	42.25%	27,339	26.65%
> 6 - <= 12	252,470,683.11	29.91%	26,642	25.97%
> 12 - <= 24	170,239,583.65	20.17%	24,248	23.63%
> 24 - <= 36	54,239,653.46	6.42%	19,913	19.41%
> 36 - <= 42	9,418,609.11	1.12%	3,823	3.73%
> 42 - <= 48	1,024,762.22	0.12%	559	0.54%
> 48 - <= 53	143,028.46	0.02%	51	0.05%
> 53	23,994.42	0.00%	19	0.02%
Total	844,199,946.02	100.00%	102,594	100.00%

WA: 10.18
MIN: 2.00
MAX: 63.00

Bavarian Sky S.A., Compartment German Auto Leases 7
Monthly Investor Report

Reporting Date:	Aug 09, 2024
Payment Date:	Aug 20, 2024
Period No.:	22
Monthly Period:	July, 2024
Interest Period:	July 22, 2024 to Aug 20, 2024 = 29 days

17. Seasoning (Cont')

Current Portfolio

Group in Months	Current Aggregate Discounted Lease Balance in EUR	Current Aggregate Discounted Lease Balance in %	Number of Contracts	Number of Contracts in %
<= 6	0.00	0.00%	0	0.00%
> 6 - <= 12	4,833,463.46	1.13%	391	0.45%
> 12 - <= 24	249,065,463.05	58.34%	30,803	35.83%
> 24 - <= 36	166,903,532.98	39.10%	52,056	60.55%
> 36 - <= 42	5,301,844.69	1.24%	1,869	2.17%
> 42 - <= 48	726,031.60	0.17%	790	0.92%
> 48 - <= 53	32,332.59	0.01%	12	0.01%
> 53	22,344.28	0.01%	47	0.05%
Total	426,885,012.65	100.00%	85,968	100.00%

WA: 23.14
MIN: 11.00
MAX: 60.00

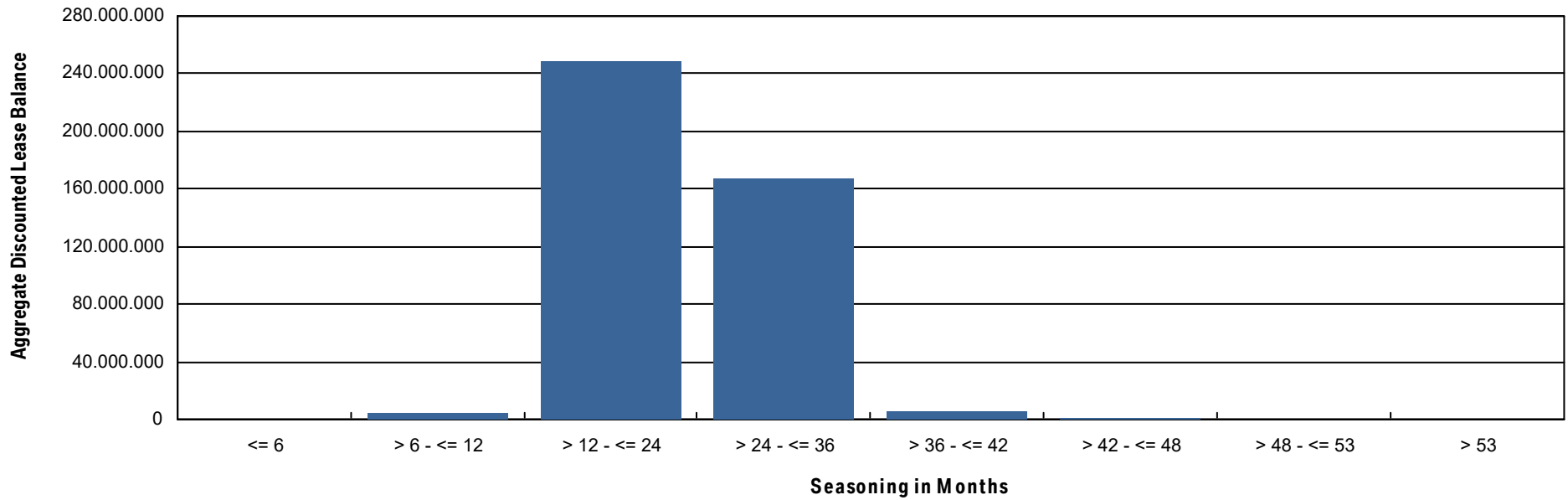


Bavarian Sky S.A., Compartment German Auto Leases 7
Monthly Investor Report

Reporting Date: Aug 09, 2024
Payment Date: Aug 20, 2024
Period No.: 22
Monthly Period: July, 2024
Interest Period: July 22, 2024 to Aug 20, 2024
= 29 days

17.a Seasoning (Graph)

Current Portfolio



Bavarian Sky S.A., Compartment German Auto Leases 7
Monthly Investor Report

Reporting Date: Aug 09, 2024
 Payment Date: Aug 20, 2024
 Period No.: 22
 Monthly Period: July, 2024
 Interest Period: July 22, 2024 to Aug 20, 2024
 = 29 days

18. Remaining Term

Initial Portfolio

Group in Months	Current Aggregate Discounted Lease Balance in EUR	Current Aggregate Discounted Lease Balance in %	Number of Contracts	Number of Contracts in %
<= 6	18,297,871.46	2.17%	12,842	12.52%
> 6 - <= 12	40,960,626.76	4.85%	12,514	12.20%
> 12 - <= 24	196,985,091.65	23.33%	30,077	29.32%
> 24 - <= 36	447,753,404.88	53.04%	38,465	37.49%
> 36 - <= 42	66,787,582.43	7.91%	4,433	4.32%
> 42 - <= 48	71,823,444.60	8.51%	4,158	4.05%
> 48 - <= 53	461,667.20	0.05%	38	0.04%
> 53	1,130,257.04	0.13%	67	0.07%
Total	844,199,946.02	100.00%	102,594	100.00%

WA: 28.33
 MIN : 3.00
 MAX: 58.00

Bavarian Sky S.A., Compartment German Auto Leases 7
Monthly Investor Report

Reporting Date: Aug 09, 2024
 Payment Date: Aug 20, 2024
 Period No.: 22
 Monthly Period: July, 2024
 Interest Period: July 22, 2024 to Aug 20, 2024
 = 29 days

18. Remaining Term (Cont')

Current Portfolio

Group in Months	Current Aggregate Discounted Lease Balance in EUR	Current Aggregate Discounted Lease Balance in %	Number of Contracts	Number of Contracts in %
<= 6	26,759,264.47	6.27%	26,636	30.98%
> 6 - <= 12	99,708,369.28	23.36%	25,280	29.41%
> 12 - <= 24	212,192,894.62	49.71%	27,015	31.42%
> 24 - <= 36	87,241,853.68	20.44%	6,970	8.11%
> 36 - <= 42	744,527.93	0.17%	56	0.07%
> 42 - <= 48	238,102.67	0.06%	11	0.01%
> 48 - <= 53	0.00	0.00%	0	0.00%
> 53	0.00	0.00%	0	0.00%
Total	426,885,012.65	100.00%	85,968	100.00%

WA : 17.72
 MIN : 0.00
 MAX : 47.00

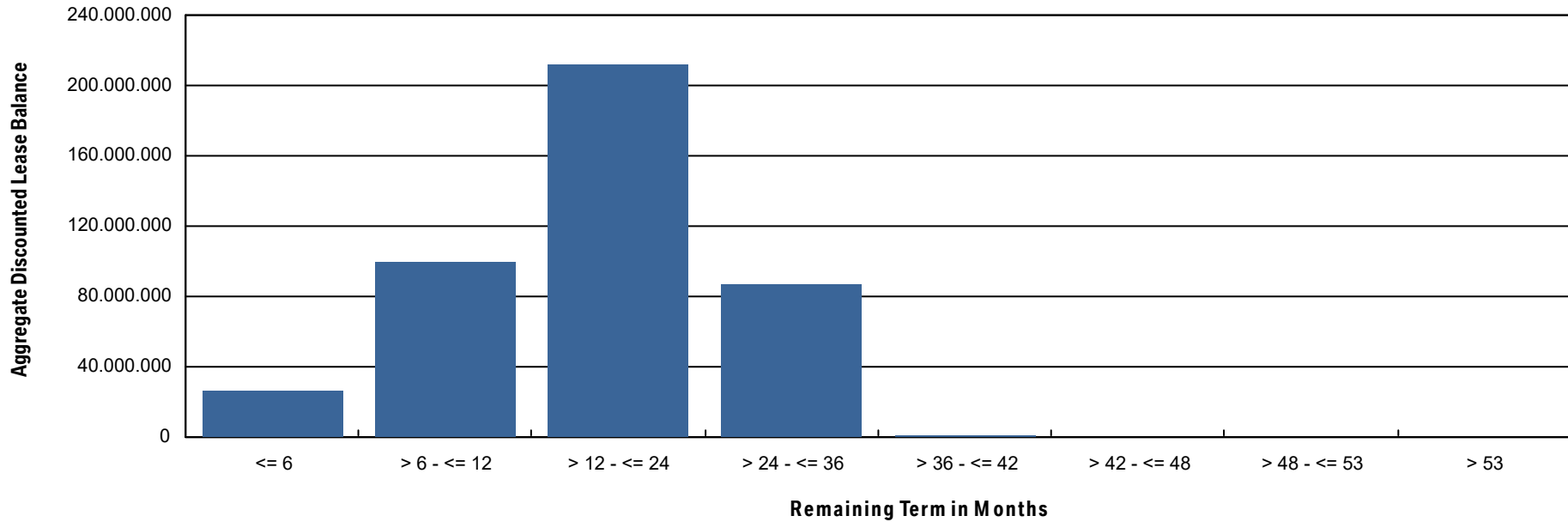


Bavarian Sky S.A., Compartment German Auto Leases 7
Monthly Investor Report

Reporting Date: Aug 09, 2024
 Payment Date: Aug 20, 2024
 Period No.: 22
 Monthly Period: July, 2024
 Interest Period: July 22, 2024 to Aug 20, 2024
 = 29 days

18.a Remaining Term (Graph)

Current Portfolio



Bavarian Sky S.A., Compartment German Auto Leases 7
Monthly Investor Report

Reporting Date: Aug 09, 2024
 Payment Date: Aug 20, 2024
 Period No.: 22
 Monthly Period: July, 2024
 Interest Period: July 22, 2024 to Aug 20, 2024
 = 29 days

19. Original Term

Initial Portfolio

Group in Months	Current Aggregate Discounted Lease Balance in EUR	Current Aggregate Discounted Lease Balance in %	Number of Contracts	Number of Contracts in %
<= 6	11,445.83	0.00%	13	0.01%
> 6 - <= 12	289,461.77	0.03%	143	0.14%
> 12 - <= 24	30,072,820.92	3.56%	7,955	7.75%
> 24 - <= 36	580,585,974.05	68.77%	71,552	69.74%
> 36 - <= 42	43,233,451.17	5.12%	6,726	6.56%
> 42 - <= 48	186,916,375.90	22.14%	15,868	15.47%
> 48 - <= 53	51,966.46	0.01%	12	0.01%
> 53	3,038,449.92	0.36%	325	0.32%
Total	844,199,946.02	100.00%	102,594	100.00%

WA : 38.51
 MIN : 5.00
 MAX: 66.00

Bavarian Sky S.A., Compartment German Auto Leases 7
Monthly Investor Report

Reporting Date: Aug 09, 2024
 Payment Date: Aug 20, 2024
 Period No.: 22
 Monthly Period: July, 2024
 Interest Period: July 22, 2024 to Aug 20, 2024
 = 29 days

19. Original Term (Cont')

Current Portfolio

Group in Months	Current Aggregate Discounted Lease Balance in EUR	Current Aggregate Discounted Lease Balance in %	Number of Contracts	Number of Contracts in %
<= 6	0.00	0.00%	0	0.00%
> 6 - <= 12	0.00	0.00%	8	0.01%
> 12 - <= 24	2,249,622.51	0.53%	2,289	2.66%
> 24 - <= 36	240,942,732.83	56.44%	61,086	71.06%
> 36 - <= 42	18,236,789.16	4.27%	3,955	4.60%
> 42 - <= 48	162,879,007.99	38.16%	18,339	21.33%
> 48 - <= 53	47,172.75	0.01%	4	0.00%
> 53	2,529,687.41	0.59%	287	0.33%
Total	426,885,012.65	100.00%	85,968	100.00%

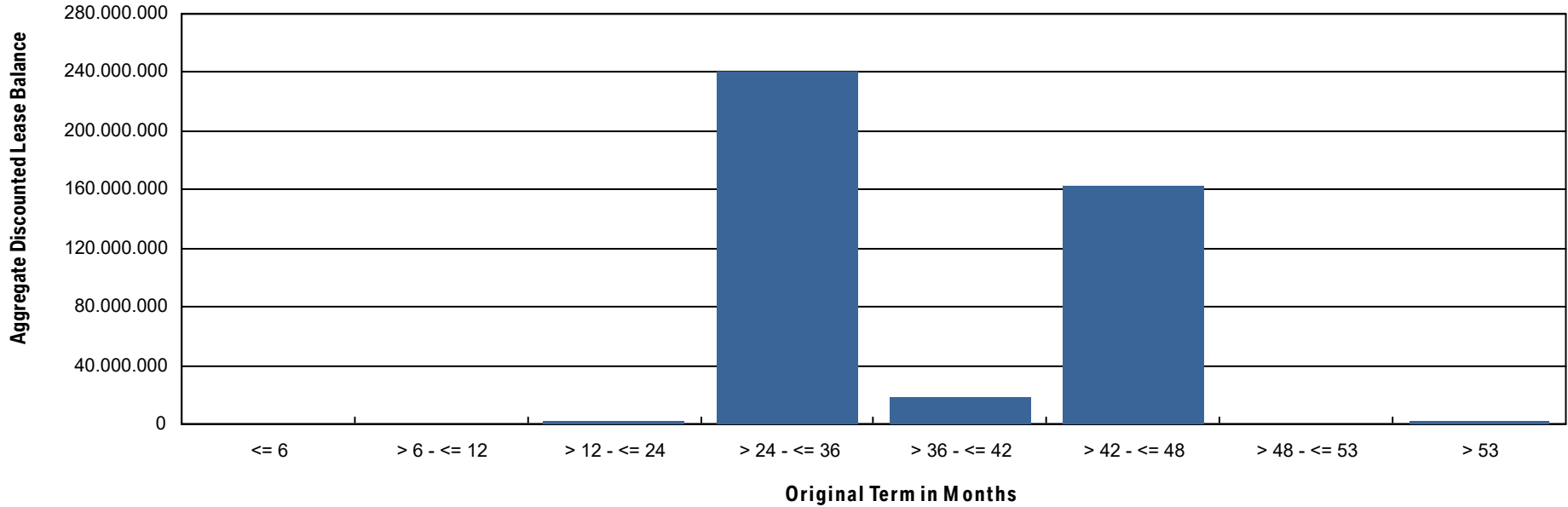
WA : 40.87
 MIN : 11.00
 MAX : 60.00

Bavarian Sky S.A., Compartment German Auto Leases 7
Monthly Investor Report

Reporting Date:	Aug 09, 2024
Payment Date:	Aug 20, 2024
Period No.:	22
Monthly Period:	July, 2024
Interest Period:	July 22, 2024 to Aug 20, 2024 = 29 days

19.a Original Term (Graph)

Current Portfolio



Bavarian Sky S.A., Compartment German Auto Leases 7
Monthly Investor Report

Reporting Date: Aug 09, 2024
 Payment Date: Aug 20, 2024
 Period No.: 22
 Monthly Period: July, 2024
 Interest Period: July 22, 2024 to Aug 20, 2024
 = 29 days

20. Vehicle Class

Initial Portfolio

Group in Vehicle Class	Current Aggregate Discounted Lease Balance in EUR	Current Aggregate Discounted Lease Balance in %	Number of Contracts	Number of Contracts in %
BMW 1 Series	56,256,791.15	6.66%	11,651	11.36%
BMW 2 Series	38,203,328.52	4.53%	6,102	5.95%
BMW 3 Series	83,903,914.14	9.94%	9,207	8.97%
BMW 4 Series	54,080,547.01	6.41%	3,840	3.74%
BMW 5 Series	84,080,656.91	9.96%	7,637	7.44%
BMW 6 Series	3,482,180.28	0.41%	329	0.32%
BMW 7 Series	13,001,244.80	1.54%	873	0.85%
BMW 8 Series	14,260,399.43	1.69%	704	0.69%
BMW Group Others	9,181,406.24	1.09%	738	0.72%
BMW i3 Series	31,665,366.41	3.75%	7,856	7.66%
BMW i8 Series	873,403.39	0.10%	73	0.07%
BMW iX	11,263,958.71	1.33%	376	0.37%
BMW X1 Series	71,789,512.49	8.50%	10,878	10.60%
BMW X2 Series	22,348,446.89	2.65%	3,800	3.70%
BMW X3 Series	98,747,567.71	11.70%	9,439	9.20%
BMW X4 Series	18,450,737.33	2.19%	1,670	1.63%
BMW X5 Series	86,807,078.91	10.28%	4,903	4.78%
BMW X6 Series	18,480,318.17	2.19%	917	0.89%
BMW X7 Series	9,788,893.20	1.16%	486	0.47%
BMW Z4 Series	14,933,150.82	1.77%	1,517	1.48%
MINI Clubman	9,741,029.68	1.15%	1,878	1.83%
MINI Hatch	92,860,013.83	11.00%	17,720	17.27%
Total	844,199,946.02	100.00%	102,594	100.00%

Bavarian Sky S.A., Compartment German Auto Leases 7

Monthly Investor Report

Reporting Date:	Aug 09, 2024
Payment Date:	Aug 20, 2024
Period No.:	22
Monthly Period:	July, 2024
Interest Period:	July 22, 2024 to Aug 20, 2024 = 29 days

20. Vehicle Class (Cont')

Current Portfolio

Group in Vehicle Class	Current Aggregate Discounted Lease Balance in EUR	Current Aggregate Discounted Lease Balance in %	Number of Contracts	Number of Contracts in %
BMW 1 Series	25,410,847.12	5.95%	8,772	10.20%
BMW 2 Series	23,074,016.09	5.41%	5,090	5.92%
BMW 3 Series	40,679,116.15	9.53%	7,698	8.95%
BMW 4 Series	36,189,140.52	8.48%	4,425	5.15%
BMW 5 Series	37,856,226.52	8.87%	5,756	6.70%
BMW 6 Series	1,067,853.55	0.25%	167	0.19%
BMW 7 Series	3,727,142.25	0.87%	471	0.55%
BMW 8 Series	6,367,885.41	1.49%	498	0.58%
BMW Group Others	4,545,771.74	1.06%	679	0.79%
BMW i3 Series	9,414,505.60	2.21%	4,762	5.54%
BMW i8 Series	97,479.19	0.02%	22	0.03%
BMW iX	8,334,535.81	1.95%	561	0.65%
BMW X1 Series	35,750,793.54	8.37%	8,513	9.90%
BMW X2 Series	10,196,658.69	2.39%	2,666	3.10%
BMW X3 Series	49,265,369.43	11.54%	8,381	9.75%
BMW X4 Series	8,326,813.02	1.95%	1,169	1.36%
BMW X5 Series	46,568,798.67	10.91%	4,643	5.40%
BMW X6 Series	8,596,859.56	2.01%	785	0.91%
BMW X7 Series	5,249,781.50	1.23%	409	0.48%
BMW Z4 Series	7,087,262.79	1.66%	1,314	1.53%
MINI Clubman	4,428,322.18	1.04%	1,318	1.53%
MINI Hatch	54,649,833.32	12.80%	17,869	20.79%
Total	426,885,012.65	100.00%	85,968	100.00%

Bavarian Sky S.A., Compartment German Auto Leases 7
Monthly Investor Report

Reporting Date:	Aug 09, 2024
Payment Date:	Aug 20, 2024
Period No.:	22
Monthly Period:	July, 2024
Interest Period:	July 22, 2024 to Aug 20, 2024 = 29 days

21. Payment Type

Initial Portfolio

Group in Payment Type	Current Aggregate Discounted Lease Balance in EUR	Current Aggregate Discounted Lease Balance in %	Number of Contracts	Number of Contracts in %
Direct Debit	842,005,097.19	99.74%	102,354	99.77%
Self Payment	2,194,848.83	0.26%	240	0.23%
Total	844,199,946.02	100.00%	102,594	100.00%

Current Portfolio

Group in Payment Type	Current Aggregate Discounted Lease Balance in EUR	Current Aggregate Discounted Lease Balance in %	Number of Contracts	Number of Contracts in %
Direct Debit	423,634,426.42	99.24%	85,437	99.38%
Self Payment	3,250,586.23	0.76%	531	0.62%
Total	426,885,012.65	100.00%	85,968	100.00%

Bavarian Sky S.A., Compartment German Auto Leases 7
Monthly Investor Report

Reporting Date: Aug 09, 2024
 Payment Date: Aug 20, 2024
 Period No.: 22
 Monthly Period: July, 2024
 Interest Period: July 22, 2024 to Aug 20, 2024
 = 29 days

22. Contracts Per Lessee

Initial Portfolio

Number of Contracts	Current Aggregate Discounted Lease Balance in EUR	Current Aggregate Discounted Lease Balance in %	Number of Contracts	Number of Contracts in %
1	699,502,096.64	82.86%	88,135	85.91%
2 - 4	120,537,579.76	14.28%	11,553	11.26%
5 - 7	10,764,456.81	1.28%	1,153	1.12%
8 - 10	3,285,675.12	0.39%	361	0.35%
> 10	10,110,137.69	1.20%	1,392	1.36%
Total	844,199,946.02	100.00%	102,594	100.00%

Current Portfolio

Number of Contracts	Current Aggregate Discounted Lease Balance in EUR	Current Aggregate Discounted Lease Balance in %	Number of Contracts	Number of Contracts in %
1	351,526,232.24	82.35%	73,014	84.93%
2 - 4	64,369,601.06	15.08%	10,708	12.46%
5 - 7	5,834,199.51	1.37%	1,077	1.25%
8 - 10	1,789,365.52	0.42%	344	0.40%
> 10	3,365,614.32	0.79%	825	0.96%
Total	426,885,012.65	100.00%	85,968	100.00%

Bavarian Sky S.A., Compartment German Auto Leases 7

Monthly Investor Report

Reporting Date: Aug 09, 2024
 Payment Date: Aug 20, 2024
 Period No.: 22
 Monthly Period: July, 2024
 Interest Period: July 22, 2024 to Aug 20, 2024
 = 29 days

23. Amortisation

Initial Portfolio

Period	Month / Year	Principal Balance in EUR
0	Sept, 2022	844,199,946.02
1	Oct, 2022	807,698,828.55
2	Nov, 2022	771,015,201.13
3	Dec, 2022	735,189,464.60
4	Jan, 2023	700,563,632.20
5	Feb, 2023	666,740,621.12
6	Mar, 2023	633,721,336.43
7	Apr, 2023	601,447,077.62
8	May, 2023	569,731,012.03
9	June, 2023	538,640,056.59
10	July, 2023	508,369,925.57
11	Aug, 2023	478,713,810.08
12	Sept, 2023	449,579,739.95
13	Oct, 2023	421,008,924.83
14	Nov, 2023	393,004,852.10
15	Dec, 2023	365,846,616.23
16	Jan, 2024	339,275,454.57
17	Feb, 2024	313,140,371.54
18	Mar, 2024	287,503,462.71
19	Apr, 2024	262,471,476.20
20	May, 2024	238,196,639.80
21	June, 2024	215,076,558.91
22	July, 2024	193,199,007.46
23	Aug, 2024	172,330,635.11
24	Sept, 2024	152,401,190.67
25	Oct, 2024	133,629,942.28
26	Nov, 2024	116,126,207.75
27	Dec, 2024	100,137,840.46
28	Jan, 2025	85,422,909.62
29	Feb, 2025	71,900,277.56
30	Mar, 2025	59,743,709.34

Current Portfolio

Period	Month / Year	Principal Balance in EUR	Reduction in EUR
22	July, 2024	426,885,012.65	
23	Aug, 2024	393,107,123.22	33,777,889.43
24	Sept, 2024	360,899,541.17	32,207,582.05
25	Oct, 2024	329,868,927.79	31,030,613.38
26	Nov, 2024	300,176,966.92	29,691,960.87
27	Dec, 2024	272,103,831.56	28,073,135.36
28	Jan, 2025	245,361,467.99	26,742,363.57
29	Feb, 2025	219,857,647.98	25,503,820.01
30	Mar, 2025	195,762,292.28	24,095,355.70
31	Apr, 2025	173,471,339.75	22,290,952.53
32	May, 2025	152,870,907.55	20,600,432.20
33	June, 2025	134,283,514.88	18,587,392.67
34	July, 2025	117,704,924.75	16,578,590.13
35	Aug, 2025	102,762,585.80	14,942,338.95
36	Sept, 2025	89,112,712.60	13,649,873.20
37	Oct, 2025	76,742,125.50	12,370,587.10
38	Nov, 2025	65,771,406.99	10,970,718.51
39	Dec, 2025	56,413,473.98	9,357,933.01
40	Jan, 2026	48,113,630.67	8,299,843.31
41	Feb, 2026	40,549,165.22	7,564,465.45
42	Mar, 2026	33,759,661.58	6,789,503.64
43	Apr, 2026	27,876,286.45	5,883,375.13
44	May, 2026	22,745,856.45	5,130,430.00
45	June, 2026	18,430,658.47	4,315,197.98
46	July, 2026	14,883,342.22	3,547,316.25
47	Aug, 2026	11,835,127.44	3,048,214.78
48	Sept, 2026	9,168,347.09	2,666,780.35
49	Oct, 2026	6,888,632.68	2,279,714.41
50	Nov, 2026	5,037,200.87	1,851,431.81
51	Dec, 2026	3,686,039.71	1,351,161.16
52	Jan, 2027	2,642,092.29	1,043,947.42

Bavarian Sky S.A., Compartment German Auto Leases 7

Monthly Investor Report

Reporting Date: Aug 09, 2024
 Payment Date: Aug 20, 2024
 Period No.: 22
 Monthly Period: July, 2024
 Interest Period: July 22, 2024 to Aug 20, 2024
 = 29 days

23. Amortisation

Initial Portfolio

Period	Month / Year	Principal Balance in EUR
31	Apr, 2025	49,307,049.40
32	May, 2025	40,506,736.61
33	June, 2025	33,651,491.51
34	July, 2025	28,739,656.54
35	Aug, 2025	24,789,922.77
36	Sept, 2025	21,027,441.93
37	Oct, 2025	17,505,452.07
38	Nov, 2025	14,240,700.17
39	Dec, 2025	11,301,778.73
40	Jan, 2026	8,668,364.35
41	Feb, 2026	6,307,071.81
42	Mar, 2026	4,231,260.96
43	Apr, 2026	2,561,225.69
44	May, 2026	1,288,209.94
45	June, 2026	529,198.65
46	July, 2026	268,489.84
47	Aug, 2026	233,931.77
48	Sept, 2026	200,735.23
49	Oct, 2026	168,657.99
50	Nov, 2026	137,550.21
51	Dec, 2026	109,490.06
52	Jan, 2027	84,135.08
53	Feb, 2027	60,708.98
54	Mar, 2027	40,055.29
55	Apr, 2027	24,517.18
56	May, 2027	12,753.10
57	June, 2027	3,890.11
58	July, 2027	0.00

Current Portfolio

Period	Month / Year	Principal Balance in EUR	Reduction in EUR
53	Feb, 2027	1,769,487.30	872,604.99
54	Mar, 2027	1,096,487.52	672,999.78
55	Apr, 2027	649,294.02	447,193.50
56	May, 2027	339,420.58	309,873.44
57	June, 2027	167,204.17	172,216.41
58	July, 2027	104,325.42	62,878.75
59	Aug, 2027	79,890.61	24,434.81
60	Sept, 2027	60,121.03	19,769.58
61	Oct, 2027	45,179.11	14,941.92
62	Nov, 2027	32,521.79	12,657.32
63	Dec, 2027	22,630.88	9,890.91
64	Jan, 2028	15,244.35	7,386.53
65	Feb, 2028	9,381.65	5,862.70
66	Mar, 2028	4,562.73	4,818.92
67	Apr, 2028	1,956.84	2,605.89
68	May, 2028	531.85	1,424.99
69	June, 2028	0.00	531.85
70	July, 2028	0.00	0.00
71	Aug, 2028	0.00	0.00
72	Sept, 2028	0.00	0.00
73	Oct, 2028	0.00	0.00
74	Nov, 2028	0.00	0.00
75	Dec, 2028	0.00	0.00
76	Jan, 2029	0.00	0.00
77	Feb, 2029	0.00	0.00
78	Mar, 2029	0.00	0.00
79	Apr, 2029	0.00	0.00
80	May, 2029	0.00	0.00

Bavarian Sky S.A., Compartment German Auto Leases 7
Monthly Investor Report

Reporting Date:	Aug 09, 2024
Payment Date:	Aug 20, 2024
Period No.:	22
Monthly Period:	July, 2024
Interest Period:	July 22, 2024 to Aug 20, 2024 = 29 days

24. Priority of Payments

All amounts in EUR

Available Distribution Amount	+	46,292,559.02
Taxes	-	7,097.42
Trustee Payment	-	0.00
Senior Expenses	-	21,042.20
Swap Net Payment	-	0.00
Class A Interest	-	1,288,014.00
Class B Interest	-	181,005.48
Cash Reserve	-	7,598,000.00
Replenishment Amount	-	0.00
Class A Principal	-	37,197,399.92
Class B Principal	-	0.00
Swap Termination Event	-	0.00
Subordinated Loan Interest	-	0.00
Subordinated Loan Principal	-	0.00
Seller	-	0.00

Bavarian Sky S.A., Compartment German Auto Leases 7
Monthly Investor Report

Reporting Date:	Aug 09, 2024
Payment Date:	Aug 20, 2024
Period No.:	22
Monthly Period:	July, 2024
Interest Period:	July 22, 2024 to Aug 20, 2024 = 29 days

25. Transaction Costs

Transaction Costs (in EUR)	Class A	Class B	Subordinated Loan	Total
Senior Expenses				21,042.20
Interest accrued for the Period	1,288,014.00	181,005.48	34,477.40	1,503,496.88
Interest payments for the Period	1,288,014.00	181,005.48	0.00	1,469,019.48
Cumulative Interest Payments	45,797,544.00	4,181,904.54	355,176.12	50,334,624.66
Unpaid Interest for the Period	0.00	0.00	34,477.40	34,477.40
Cumulative Unpaid Interest	0.00	0.00	373,846.93	373,846.93

Bavarian Sky S.A., Compartment German Auto Leases 7
Monthly Investor Report

Reporting Date:	Aug 09, 2024
Payment Date:	Aug 20, 2024
Period No.:	22
Monthly Period:	July, 2024
Interest Period:	July 22, 2024 to Aug 20, 2024 = 29 days

26. Ratings

		Fitch	S&P	Moodys	DBRS
Notes - current ratings					
	Class A	AAA	AAA	N/A	N/A
	Class B	N/A	N/A	N/A	N/A

			Fitch	S&P	Moodys	DBRS	Trigger Breached
Transaction Parties - current ratings							
	BMW AG	Long Term	N/A	A	A2	A high	
		Short Term	N/A	A-1	P-1	N/A	
Issuer Account Bank	The Bank of New York Mellon	Long Term	AA	AA-	N/A	N/A	no
		Short Term	F1+	A-1+	N/A	N/A	no
Swap Counterparty	DZ BANK AG	Long Term	AA-	A+	N/A	N/A	no
		Short Term	F1+	A-1	N/A	N/A	no

			Fitch	S&P	Moodys	DBRS
Transaction Parties - required ratings						
Issuer Account Bank	The Bank of New York Mellon	Long Term	A	A	N/A	N/A
		Short Term	F1	A-1	N/A	N/A
Swap Counterparty	DZ BANK AG	Long Term	A-	A-	N/A	N/A
		Short Term	F1	A-1	N/A	N/A

Bavarian Sky S.A., Compartment German Auto Leases 7
Monthly Investor Report

Reporting Date:	Aug 09, 2024
Payment Date:	Aug 20, 2024
Period No.:	22
Monthly Period:	July, 2024
Interest Period:	July 22, 2024 to Aug 20, 2024 = 29 days

27. Swap Information

Swap Counterparty	
Swap Counterparty	DZ Bank
Swap Termination Event	No
Swap data	
Swap type	Fixed floating interest rate swap
Notional amount in EUR	386,858,234.02
Fix leg	
Fixed rate	2.445%
Payment in EUR (Bavarian Sky S.A., Compartment German Auto Leases 7 to DZ Bank)	788,223.65
Floating leg	
Floating rate (Euribor)	3.633%
Payment in EUR (DZ Bank to Bavarian Sky S.A., Compartment German Auto Leases 7)	1,132,172.86
Net swap payment (in EUR)	343,949.21
- = from Bavarian Sky S.A., Compartment German Auto Leases 7 to DZ Bank	
+ = from DZ Bank to Bavarian Sky S.A., Compartment German Auto Leases 7)	